

V&V Reference Report

L2 ASCDS Version : 7.6.8.1

Observation 5292 - L2 Version 002
Chandra X-Ray Center

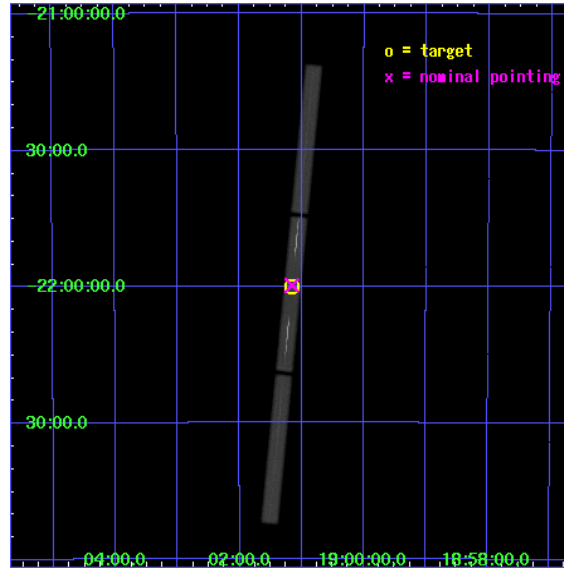
L2 Processing Date : Aug 4 2006

Contents

| | | |
|----------|-------------------------------|-----------|
| 1 | Front | 2 |
| 2 | OBI | 3 |
| 2.1 | OBI | 3 |
| 2.1.1 | Images | 3 |
| 2.1.2 | Parameters | 4 |
| 2.1.3 | Events | 4 |
| 2.2 | Compared Parameters | 5 |
| 2.3 | Aspect | 6 |
| 2.4 | Star Slots | 9 |
| 2.4.1 | Slot 3 | 9 |
| 2.4.2 | Slot 4 | 10 |
| 2.4.3 | Slot 5 | 11 |
| 2.4.4 | Slot 6 | 12 |
| 2.4.5 | Slot 7 | 13 |
| 2.5 | FID Slots | 14 |
| 2.5.1 | Slot 0 | 14 |
| 2.5.2 | Slot 2 | 15 |
| 3 | Gratings | 16 |
| 3.1 | LETG Arm | 16 |
| A | Summary | 18 |
| A.1 | Status | 18 |
| A.2 | Comments | 18 |

1 Front

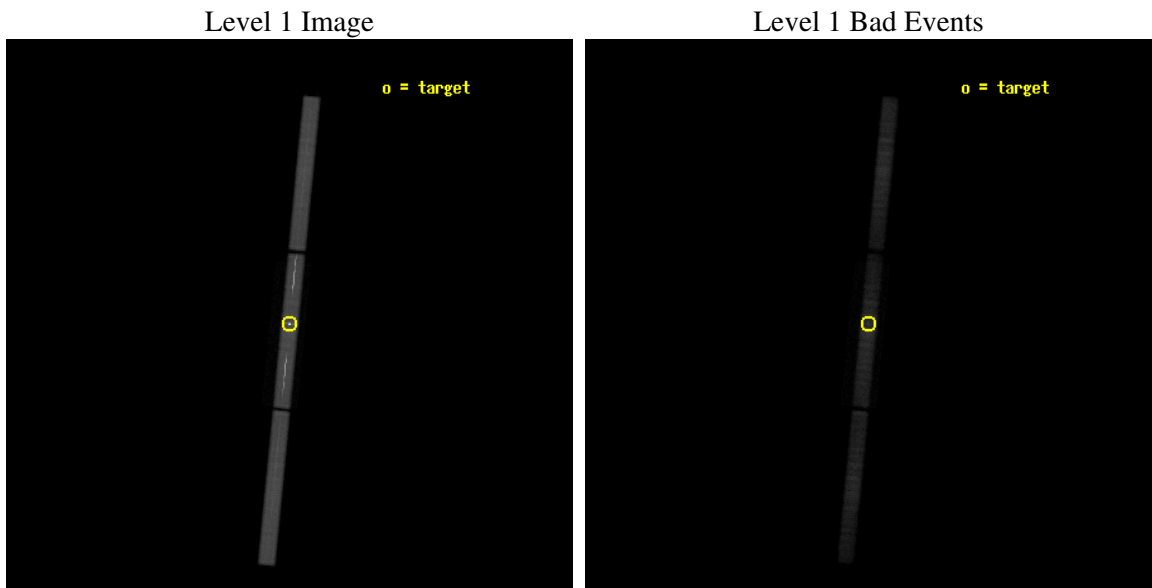
| | |
|----------|---------------------------------------|
| seq_num | 300144 |
| obs_id | 5292 |
| title | A HRC-S LETG Observation of V4743 Sgr |
| observer | Professor Sumner Starrfield |
| object | V4743 Sgr |
| ra_targ | 285.289167 |
| dec_targ | -22.001639 |
| ra_nom | 285.28893464111 |
| dec_nom | -21.996919001641 |
| roll_nom | 95.55859274646 |
| revision | 4 |
| ontime | 10308.425451428 |
| livetime | 10236.781326526 |
| l2events | 592254 |



2 OBI

2.1 OBI

2.1.1 Images



2.1.2 Parameters

| | |
|----------|---------------------|
| obi_num | 0 |
| ascdsver | 7.6.8.1 |
| caldbver | 3.2.2 |
| date | 2006-08-04T04:07:39 |
| revision | 4 |

| | |
|----------------|-----------------|
| sched_exp_time | 10193.682000 |
| ontime | 10308.425451428 |
| l1events | 867105 |

2.1.3 Events

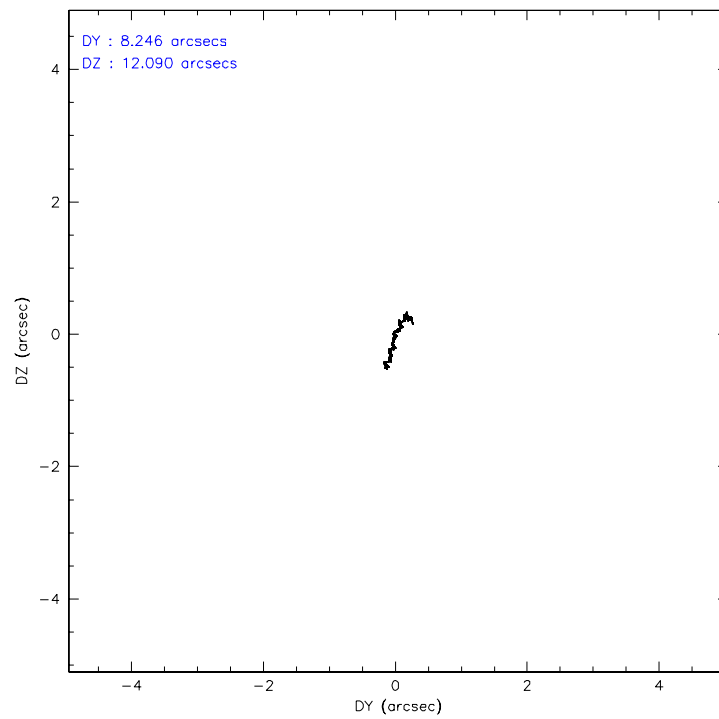
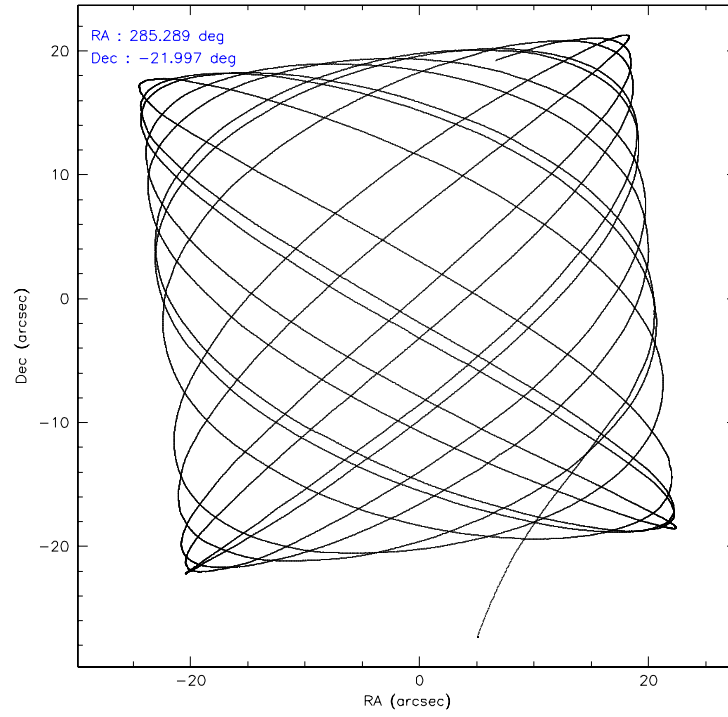
Level 1 Events

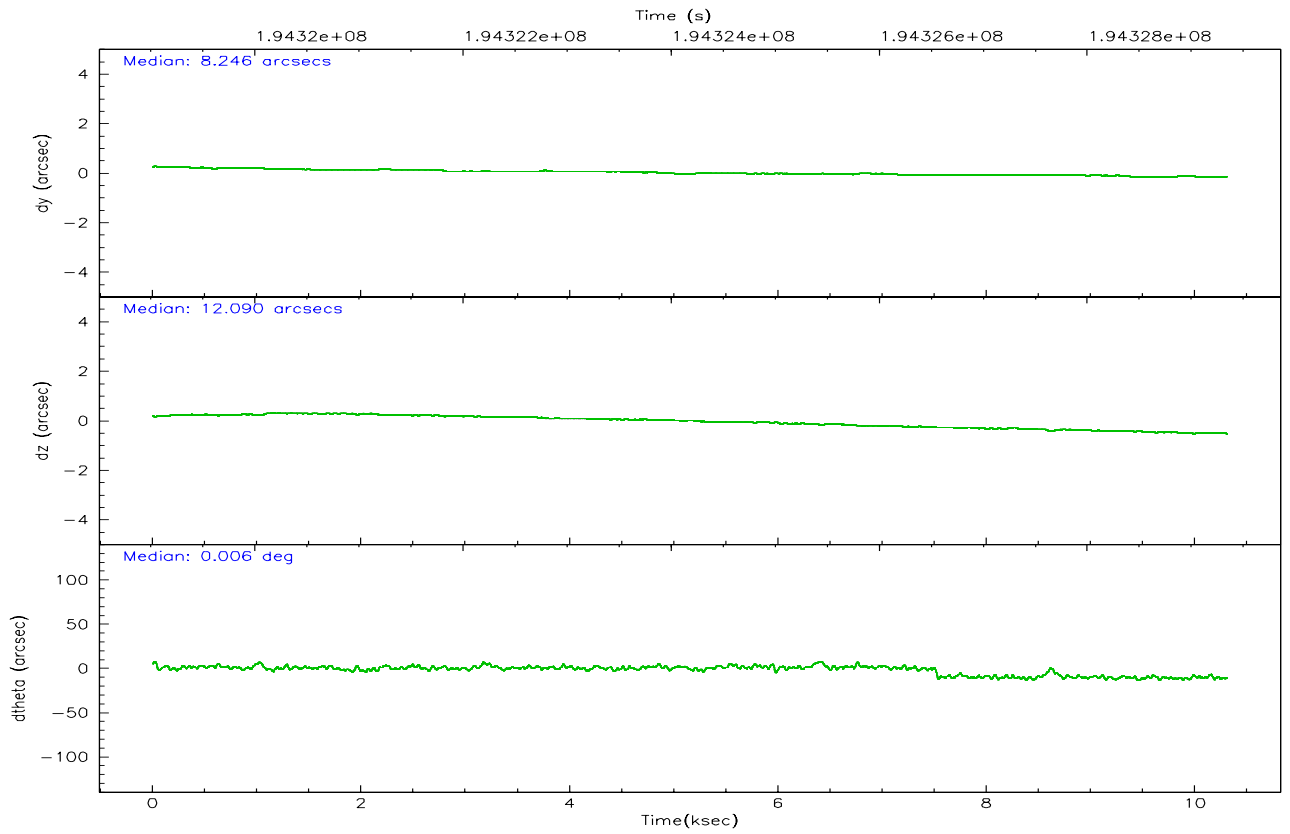
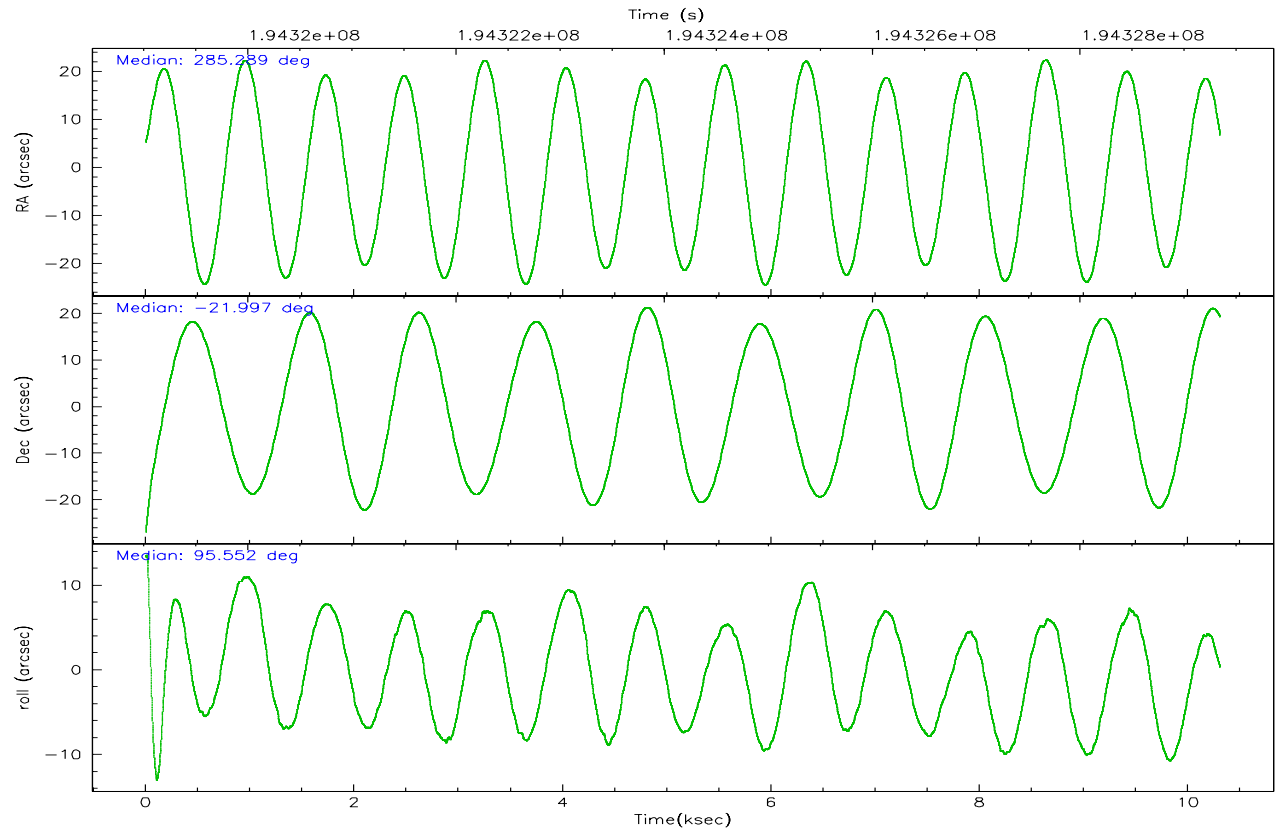
| | segment 1 | segment 2 | segment 3 |
|--------------------|----------------------|----------------------|----------------------|
| level 1 events | 254715 | 358077 | 254313 |
| rejected events | 58389 | 79351 | 69628 |
| rejected % | 22% | 22% | 27% |

2.2 Compared Parameters

| Parameter | Planned | Actual | Parameter | Planned | Actual |
|-----------------------------------|---------------------|----------------------|------------------------------|-----------|---------|
| Instrument | HRC | HRC | Obspar format version number | 6 | 6 |
| Detector | HRC-S | HRC-S | Obspar file type | PREDICTED | ACTUAL |
| Grating | LETG | LETG | Obspar update status | NONE | UPDATED |
| Data mode | OBSERVING | OBSERVING | | | |
| Observation mode | POINTING | POINTING | | | |
| Pointing RA | 285.307985 | 285.2889346411064 | | | |
| Pointing Dec | -22.019383 | -21.99691900164086 | | | |
| Pointing Roll | 95.498364 | 95.55859274646028 | | | |
| SIM focus pos (mm) | -1.429586 | -1.428180813131781 | | | |
| SIM defocus (mm) | 0.1037507710433287 | 0.1051558262725154 | | | |
| SIM translation stage pos (mm) | 250.455976 | 250.466033080201 | | | |
| SIM translation stage offset (mm) | 0 | -0.01005468664627074 | | | |
| Observation start time | 194319144.184000 | 194318757.06698 | | | |
| Observation start date | 2004-02-28T01:31:20 | 2004-02-28T01:25:57 | | | |
| Observation end time | 194329338.184000 | 194331191.85502 | | | |
| Observation end date | 2004-02-28T04:21:14 | 2004-02-28T04:53:11 | | | |

2.3 Aspect



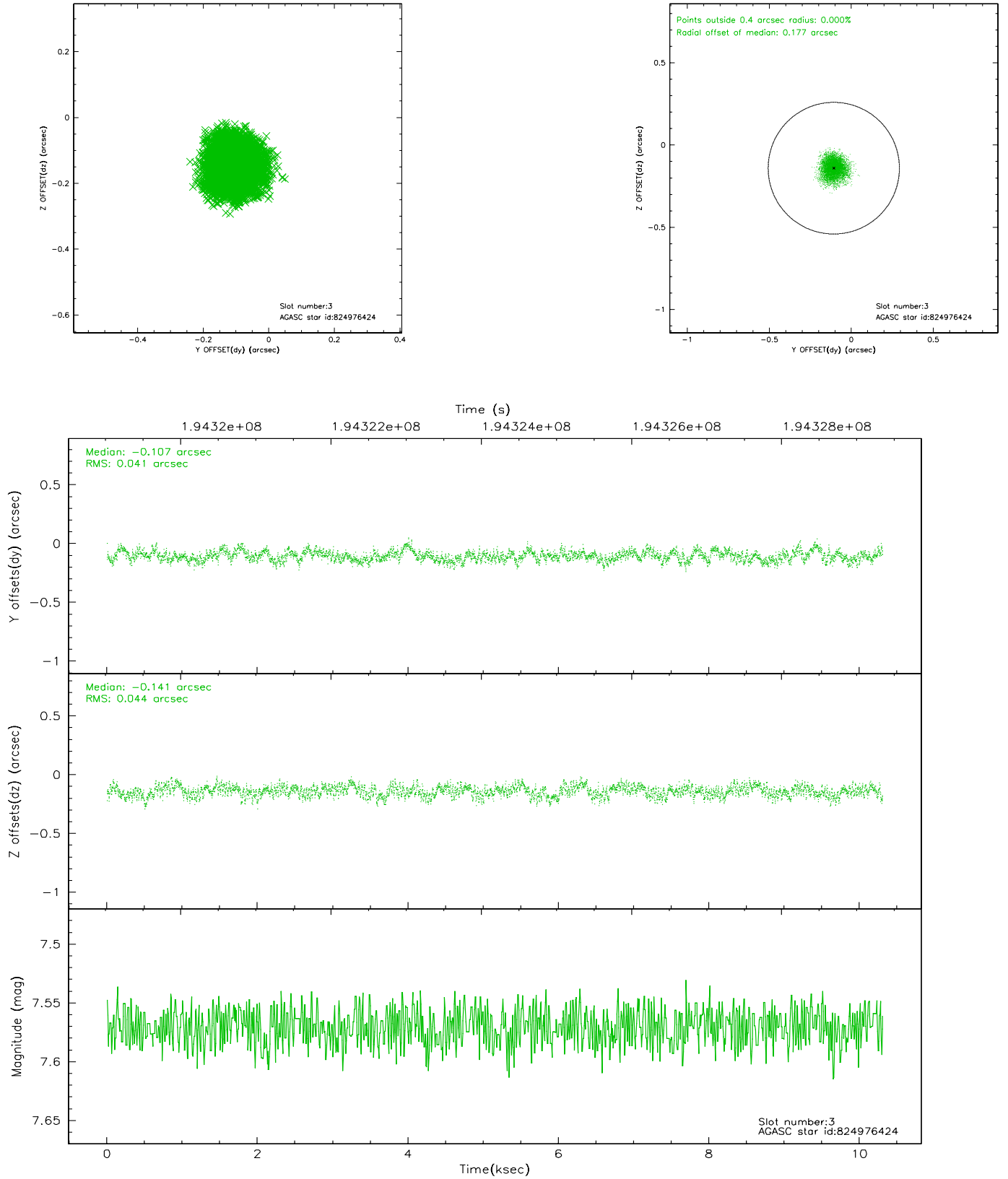


Slot Statistics

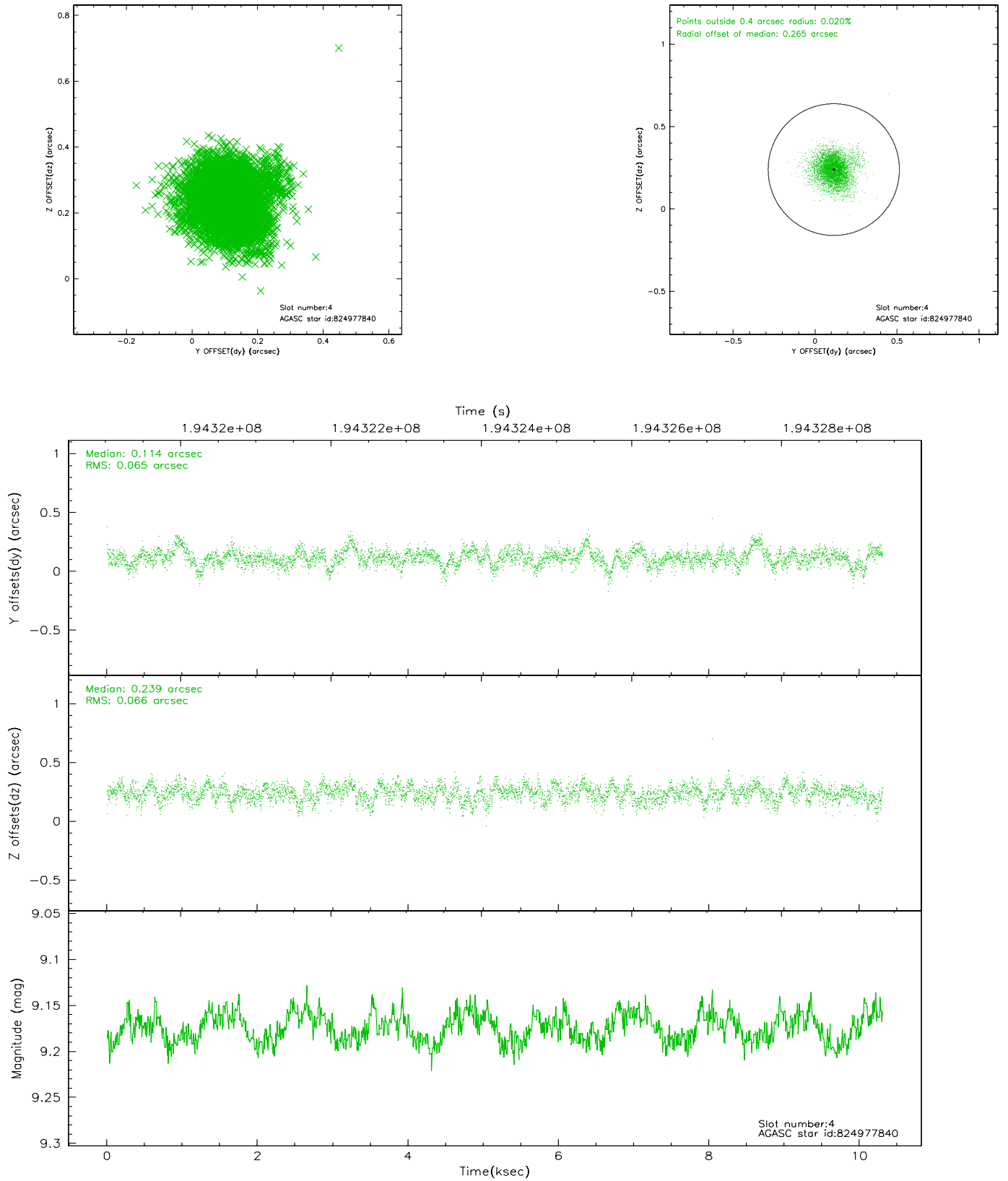
| slot | status | id | mag | n_pts | med_dy | med_dz | dr1 | dr2 | ra | dec | mean_y | mean_z |
|------|---------|-----------|------|-------|--------|--------|-------|-------|------------|------------|----------|---------|
| 0 | FID | HRC-S-2 | 7.02 | 2515 | 0.141 | -0.076 | 0.015 | 0.075 | 0.000000 | 0.000000 | 1237.17 | -453.54 |
| 1 | OMITTED | | 0.00 | 0 | 0.000 | 0.000 | 0.000 | 0.000 | 0.000000 | 0.000000 | 0.00 | 0.00 |
| 2 | FID | HRC-S-4 | 7.01 | 2514 | 0.139 | -0.124 | 0.015 | 0.075 | 0.000000 | 0.000000 | 1236.39 | 570.99 |
| 3 | GUIDE | 824976424 | 7.57 | 5030 | -0.107 | -0.141 | 0.065 | 0.104 | 284.900091 | -21.828249 | 813.42 | 1291.56 |
| 4 | GUIDE | 824977840 | 9.17 | 5028 | 0.114 | 0.239 | 0.097 | 0.164 | 285.448876 | -22.329632 | -1156.69 | -359.12 |
| 5 | GUIDE | 824979304 | 8.98 | 5029 | 0.136 | 0.182 | 0.090 | 0.147 | 285.497931 | -22.093264 | -325.95 | -604.59 |
| 6 | GUIDE | 824979864 | 9.40 | 5028 | -0.116 | -0.245 | 0.133 | 0.222 | 284.670947 | -21.972498 | 366.91 | 2101.39 |
| 7 | GUIDE | 824984488 | 9.62 | 2510 | -0.053 | -0.059 | 0.131 | 0.213 | 284.803811 | -21.903683 | 573.07 | 1637.93 |

2.4 Star Slots

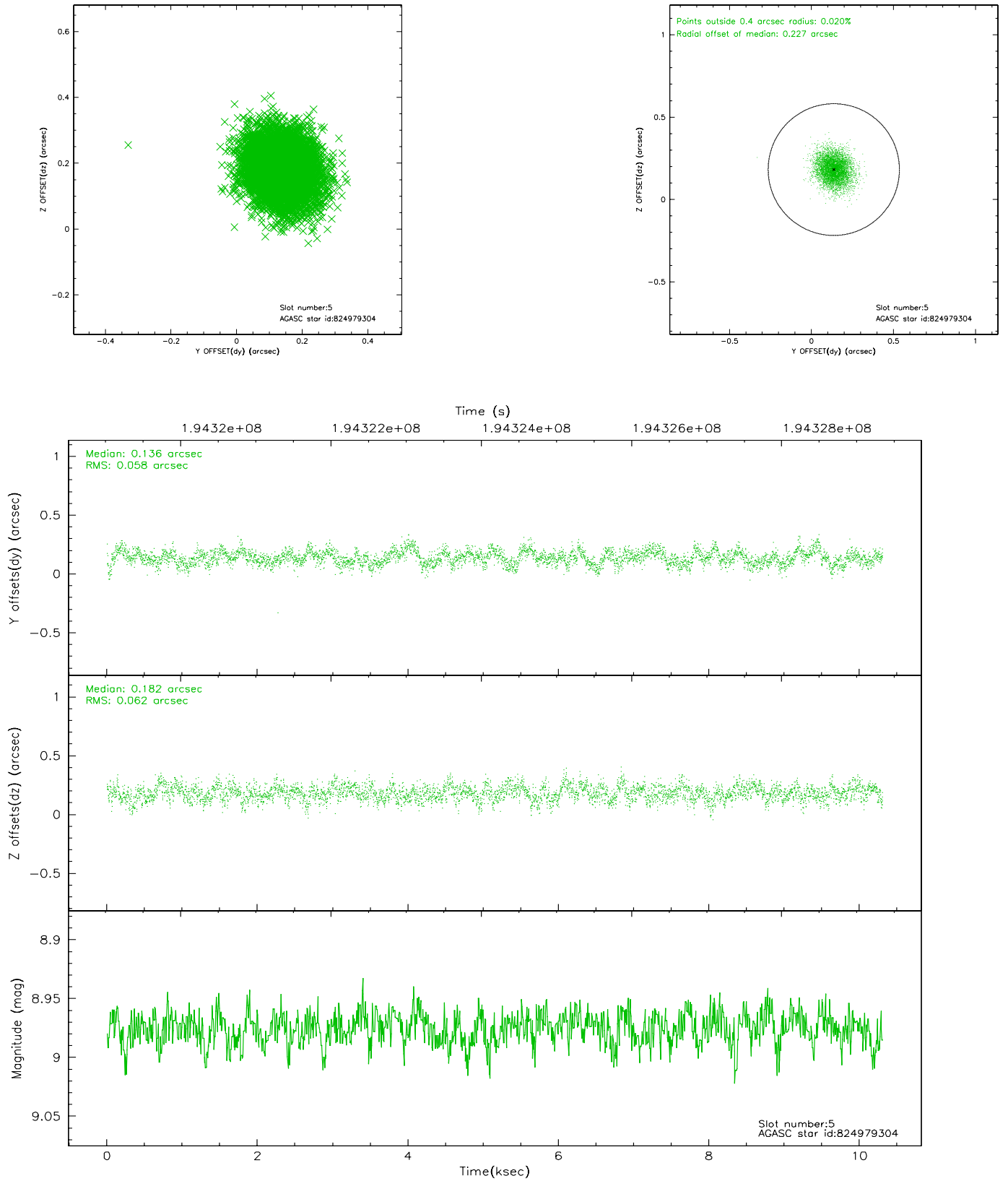
2.4.1 Slot 3



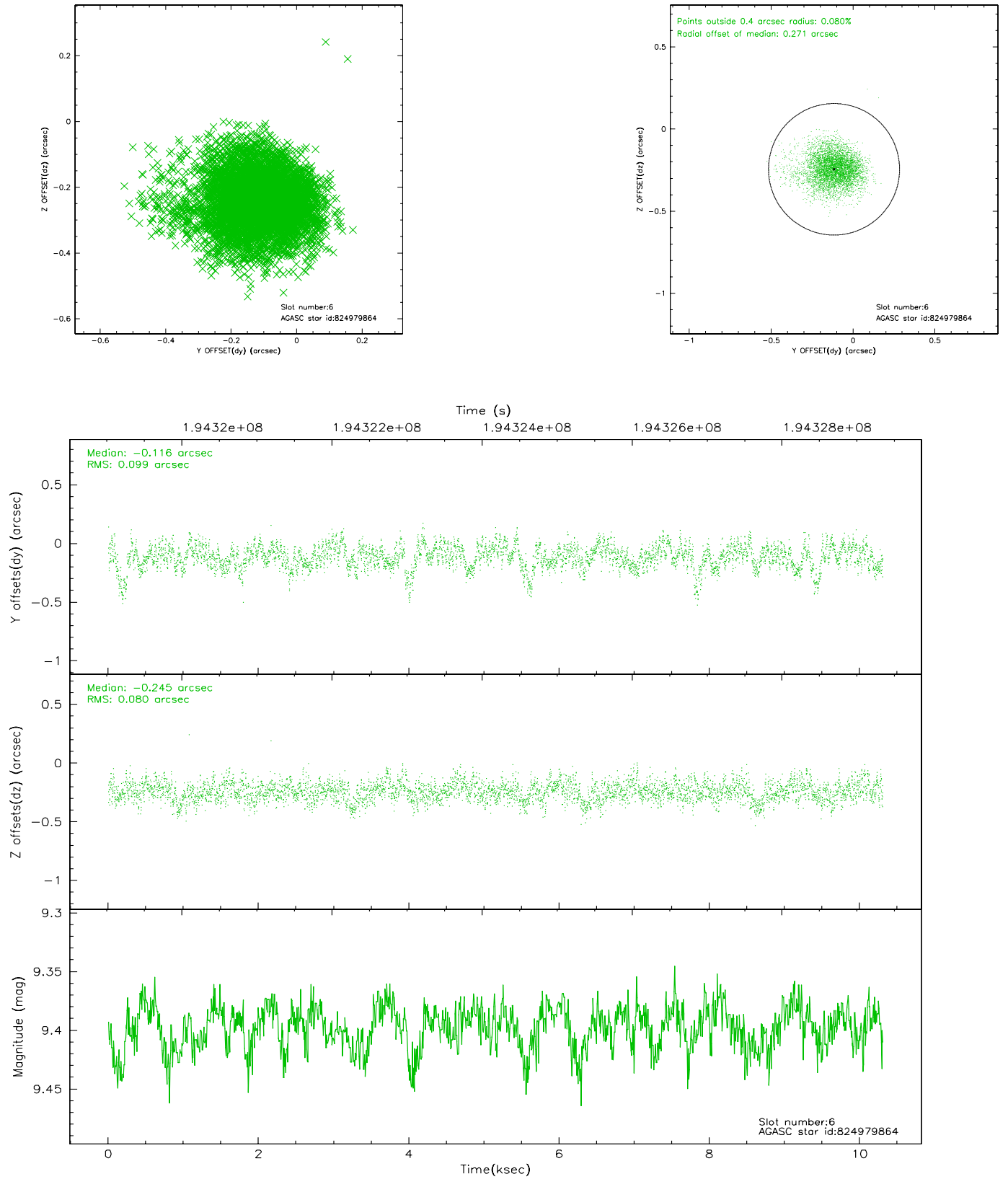
2.4.2 Slot 4



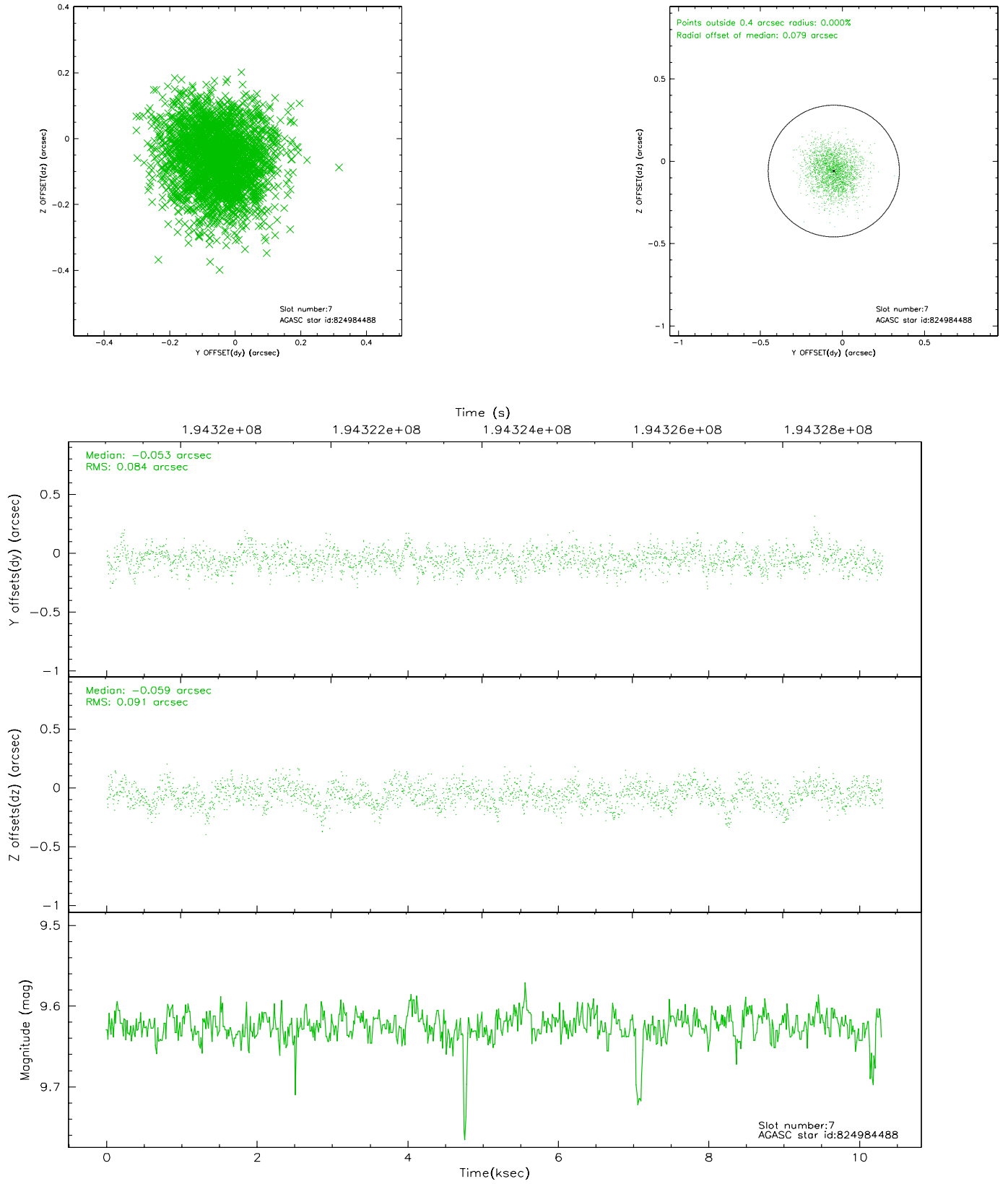
2.4.3 Slot 5



2.4.4 Slot 6

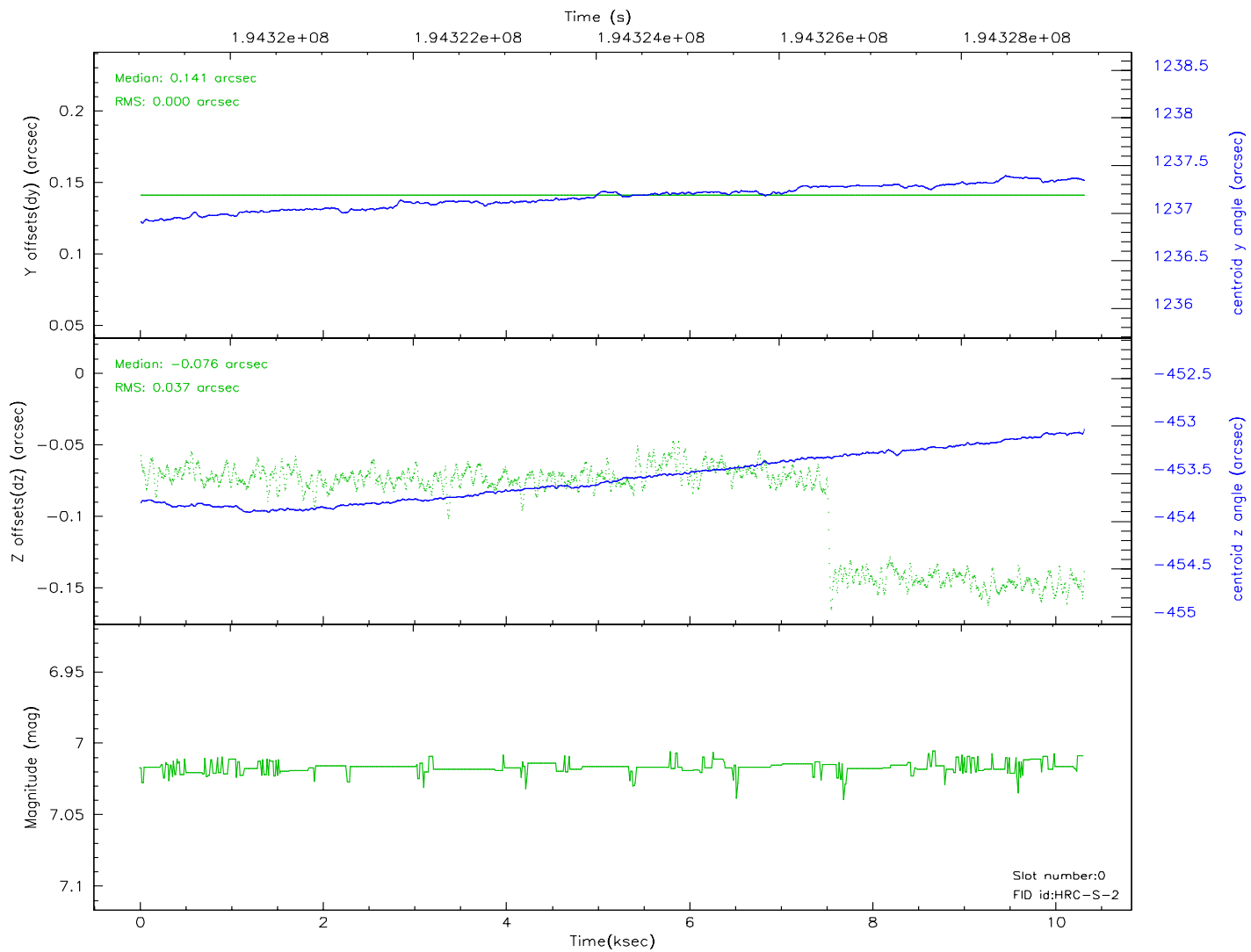
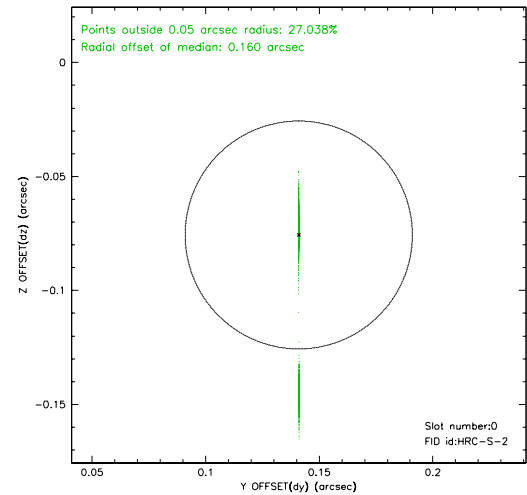
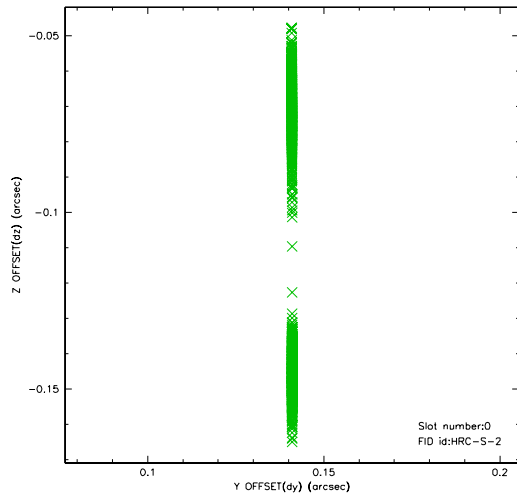


2.4.5 Slot 7

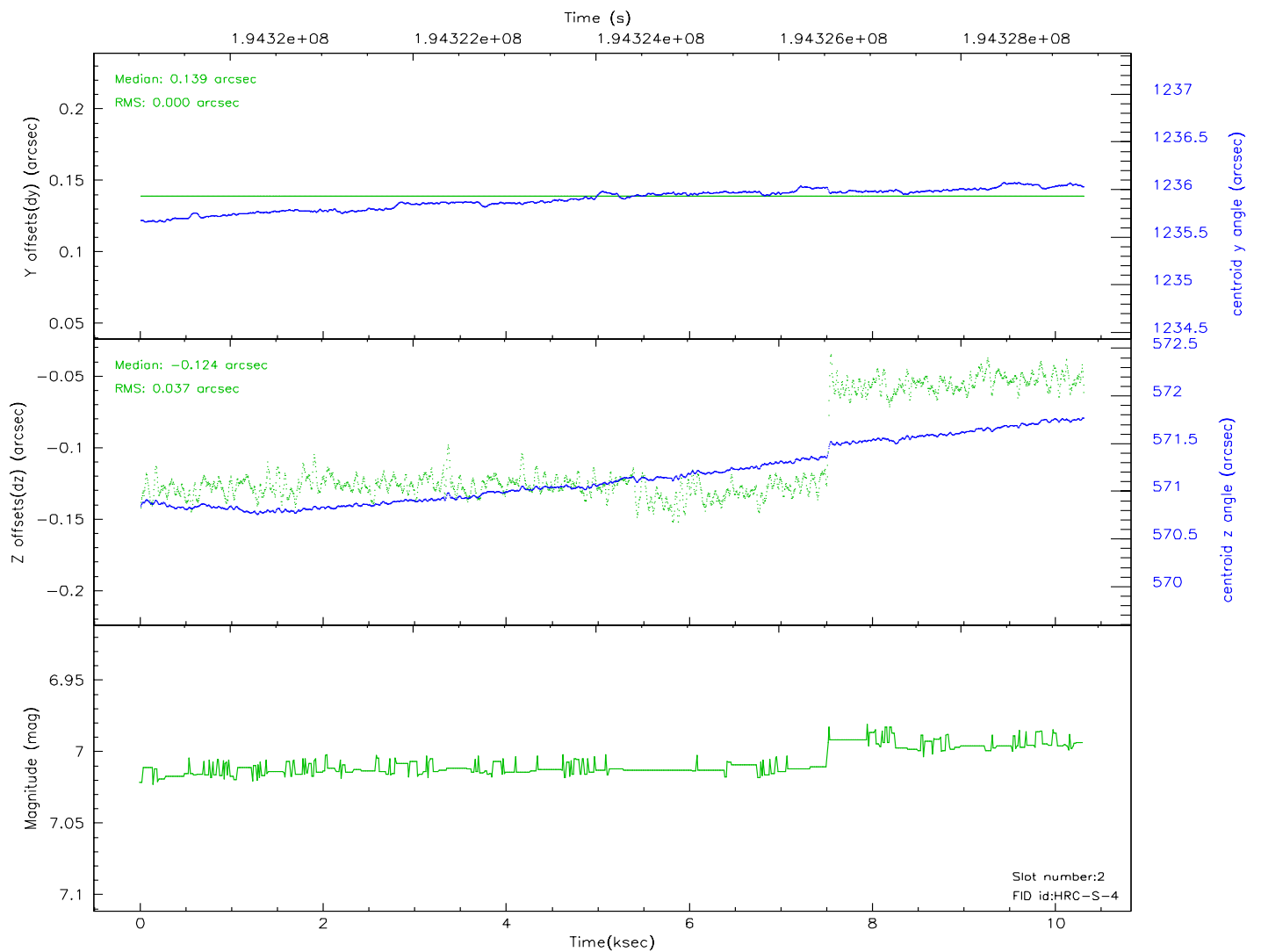
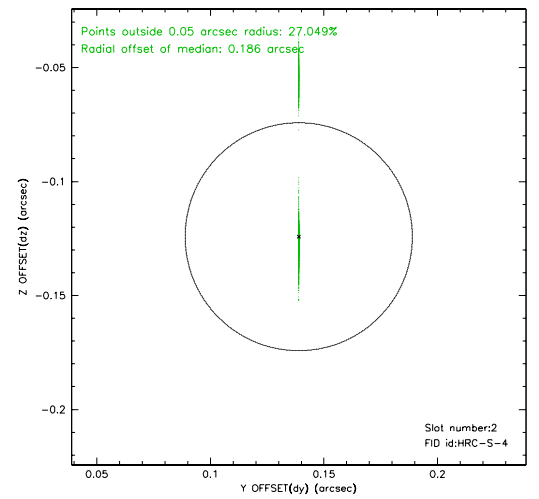
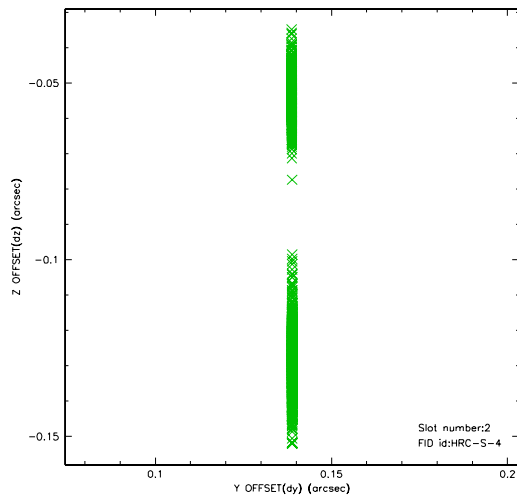


2.5 FID Slots

2.5.1 Slot 0

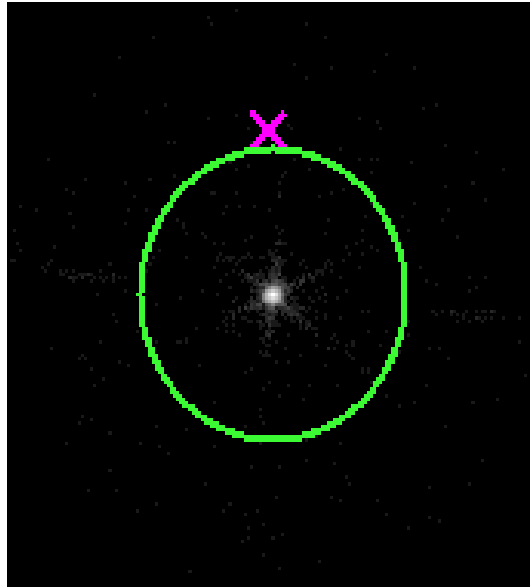


2.5.2 Slot 2



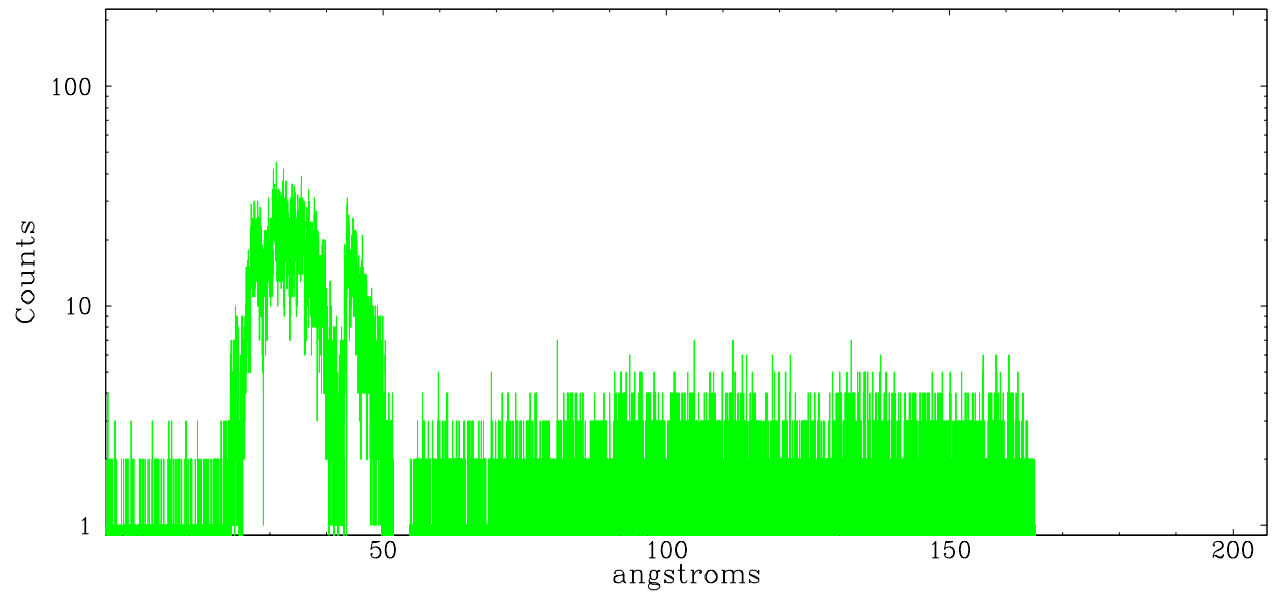
3 Gratings

3.1 LETG Arm

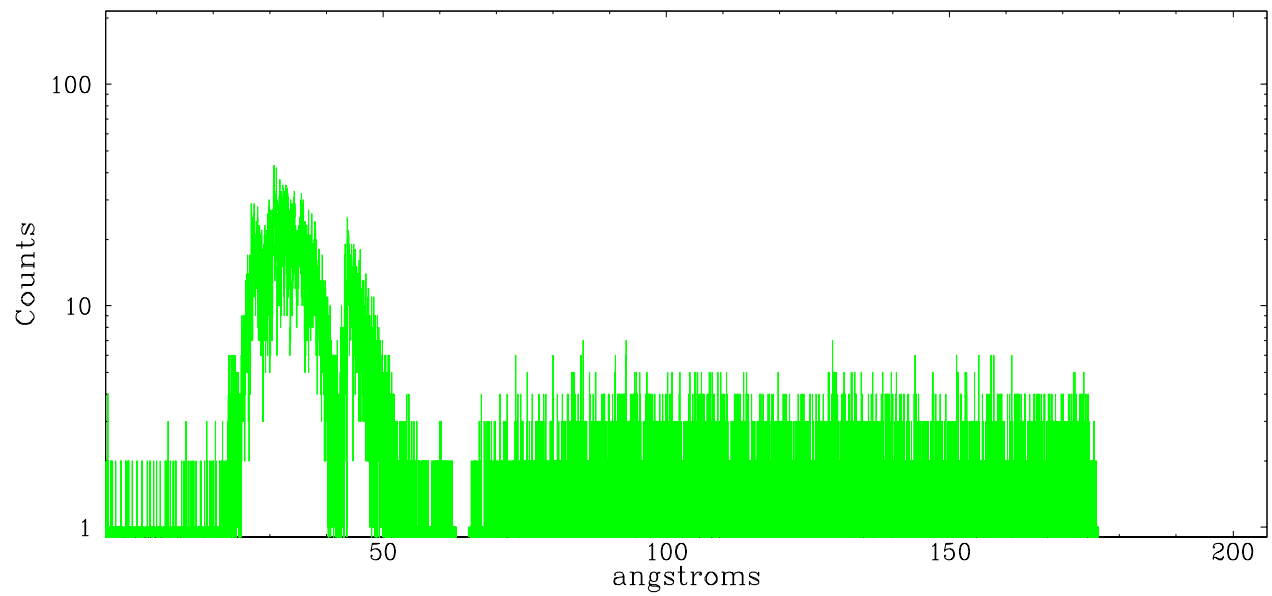


LETG Zero Order

leg order -1



leg order $+1$



A Summary

A.1 Status

| | |
|----------------------------|---------------|
| V&V Scientist | Beth Sundheim |
| V&V Date (YYYY-MM-DD) | 2006.08.07 |
| V&V Edition | 1 |
| V&V Disposition and Status | OK |
| V&V Charge Time | 10.308 |

A.2 Comments

Slot 1 was excluded from aspect solution.