

V&V Reference Report

L2 ASCDS Version : 8.5

Observation 5282 - L2 Version 4
Chandra X-Ray Center

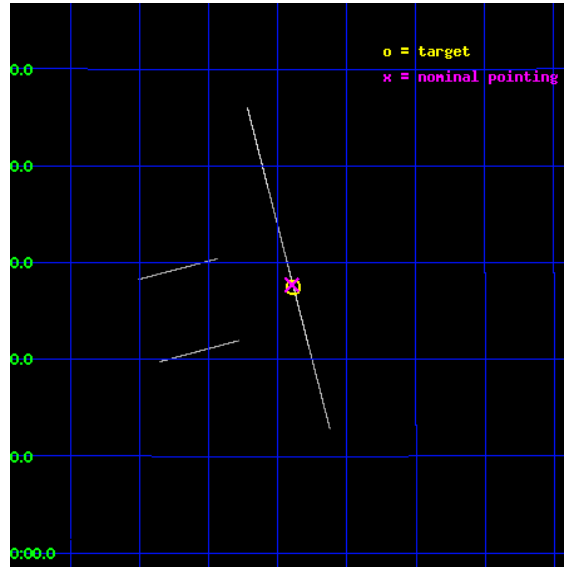
L2 Processing Date : Dec 11 2012

Contents

1	Front	2
2	OBI	3
2.1	OBI	3
2.1.1	Images	3
2.1.2	Parameters	4
2.1.3	Events	4
2.2	Compared Parameters	5
2.3	Aspect	6
2.4	Star Slots	9
2.4.1	Slot 3	9
2.4.2	Slot 4	10
2.4.3	Slot 5	11
2.4.4	Slot 6	12
2.4.5	Slot 7	13
2.5	FID Slots	14
2.5.1	Slot 0	14
2.5.2	Slot 1	15
2.5.3	Slot 2	16
A	Summary	17
A.1	Status	17
A.2	Comments	17

1 Front

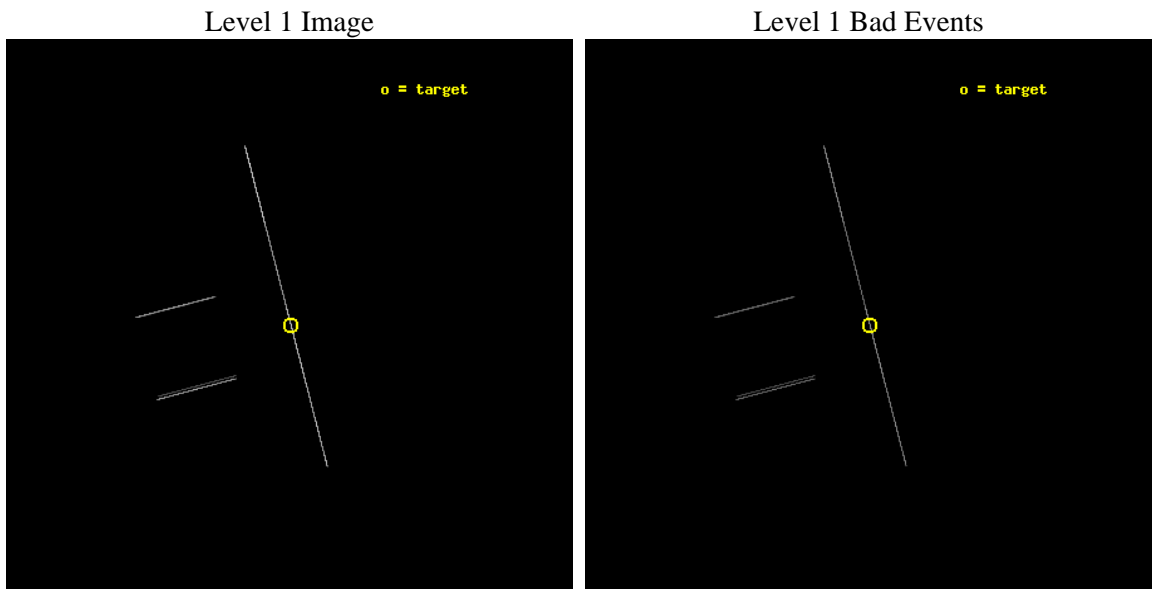
seq_num	300143	Sequence number
obs_id	5282	Observation id
title	Timing the Orbit of RX J0806.3+1527	Proposal title
observer	Dr. Tod Strohmayer	Principal investigator
object	RX J0806.3+1527	Source name
ra_targ	121.596667	Observer's specified target RA [deg]
dec_targ	15.458389	Observer's specified target Dec [deg]
ra_nom	121.59940141251	Nominal RA [deg]
dec_nom	15.461912692833	Nominal Dec [deg]
roll_nom	75.388335322307	Nominal Roll [deg]
revision	4	Processing version of data
ontime	9180.0	Sum of GTIs [s]
livetime	9144.140625	Livetime [s]
ontime2	9180.0	Sum of GTIs [s]
ontime3	9180.0	Sum of GTIs [s]
ontime5	9180.0	Sum of GTIs [s]
ontime6	9180.0	Sum of GTIs [s]
ontime7	9180.0	Sum of GTIs [s]
ontime8	9180.0	Sum of GTIs [s]
l2events	135832	Number of level 2 events



2 OBI

2.1 OBI

2.1.1 Images



2.1.2 Parameters

obi_num	0	Obi number	sched_exp_time	9000.000000	[s] Scheduled observation exposure time
ascdsver	8.5	Processing system revision	ontime	9180.0	Sum of GTIs [s]
caldsver	4.5.4	 	ontime2	9180.0	Sum of GTIs [s]
date	2012-12-11T22:13:31	Date and time of file creation	ontime3	9180.0	Sum of GTIs [s]
revision	4	Processing version of data	ontime5	9180.0	Sum of GTIs [s]
			ontime6	9180.0	Sum of GTIs [s]
			ontime7	9180.0	Sum of GTIs [s]
			ontime8	9180.0	Sum of GTIs [s]
			l1events	218623	Number of level 1 events

2.1.3 Events

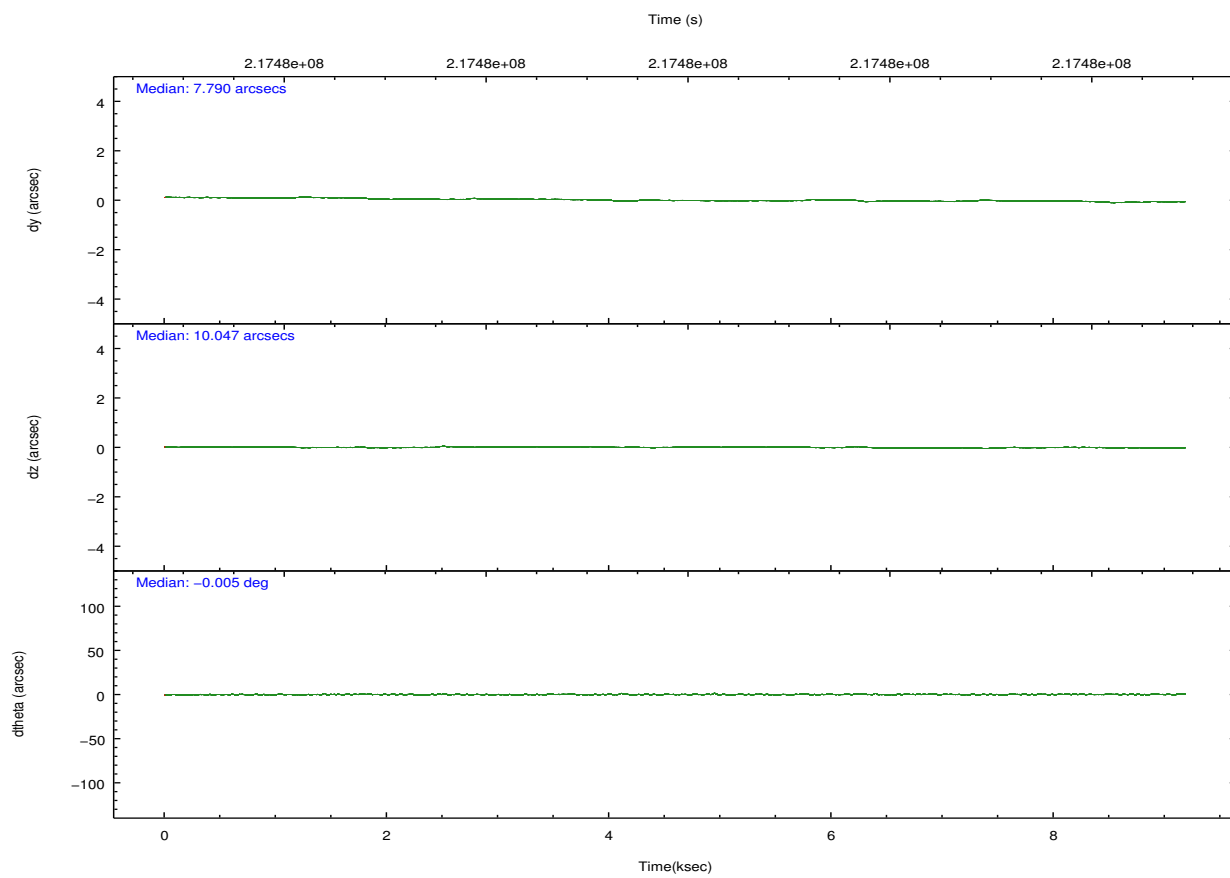
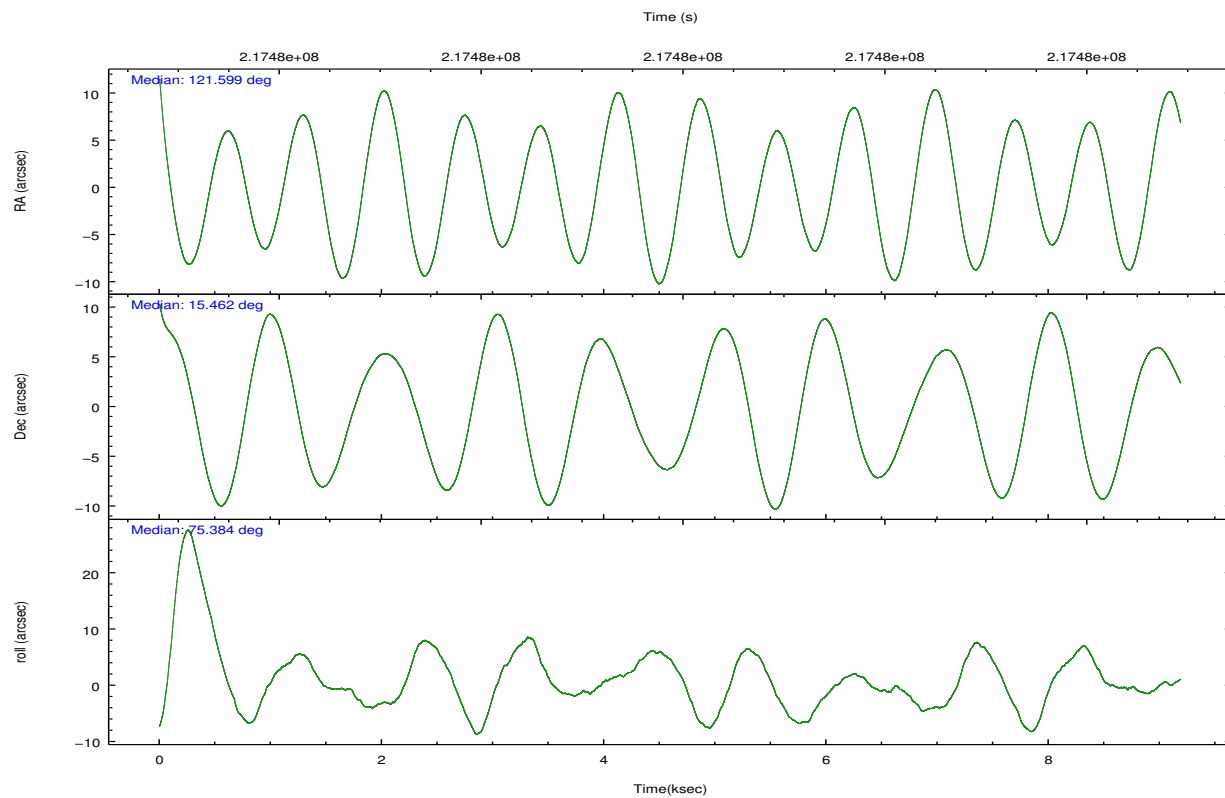
	ccd 2	ccd 3	ccd 5	ccd 6	ccd 7	ccd 8
level 1 events	14683	16327	86769	16265	53581	30998
rejected events	3365	3855	10616	4115	9983	6192
rejected %	22%	23%	12%	25%	18%	19%

	ccd 2	ccd 3	ccd 5	ccd 6	ccd 7	ccd 8
grade 0 events	1476	1578	21771	1474	3744	4701
	10%	9%	25%	9%	6%	15%
grade 1 events	48	49	91	55	66	117
	0%	0%	0%	0%	0%	0%
grade 2 events	4806	5286	21621	4983	11911	8754
	32%	32%	24%	30%	22%	28%
grade 3 events	1542	1784	1244	1658	1840	2939
	10%	10%	1%	10%	3%	9%
grade 4 events	1579	1508	1181	1545	1718	2902
	10%	9%	1%	9%	3%	9%
grade 5 events	2532	3006	5985	3148	6969	4059
	17%	18%	6%	19%	13%	13%
grade 6 events	2700	3116	34876	3402	27333	7526
	18%	19%	40%	20%	51%	24%
grade 7 events	0	0	0	0	0	0
	0%	0%	0%	0%	0%	0%

2.2 Compared Parameters

Parameter	Planned	Actual	Parameter	Planned	Actual
Instrument	ACIS	ACIS	Obspar format version number	7	7
Detector	ACIS-235678	ACIS-235678	Obspar file type	PREDICTED	ACTUAL
Grating	NONE	NONE	Obspar update status	NONE	UPDATED
Data mode	CC33_GRADED	CC33_GRADED	Number of optional ACIS chips dropped	0	0
Observation mode	POINTING	POINTING	On-chip summing requested	N	N
[deg] Pointing RA	121.607272	121.5994014125144	Subarray requested	NONE	NONE
[deg] Pointing Dec	15.435700	15.46191269283338	Alternating exposures requested	N	N
[deg] Pointing Roll	75.229621	75.38833532230723	[s] Primary exposure time	0.000000	0
[mm] SIM focus pos	-0.684267	-0.6828225247311905			
[mm] SIM defocus	0	0.001444936568705701			
[mm] SIM translation stage pos	-190.132523	-190.1425803651734			
[mm] SIM translation stage offset	0	0.01005778216563158			
[s] Observation start time (MET)	217475471.184000	217474602.79425			
Observation start date	2004-11-22T01:50:07	2004-11-22T01:36:42			
[s] Observation end time (MET)	217484471.184000	217485159.78222			
Observation end date	2004-11-22T04:20:07	2004-11-22T04:32:39			
Read mode	CONTINUOUS	CONTINUOUS			

2.3 Aspect

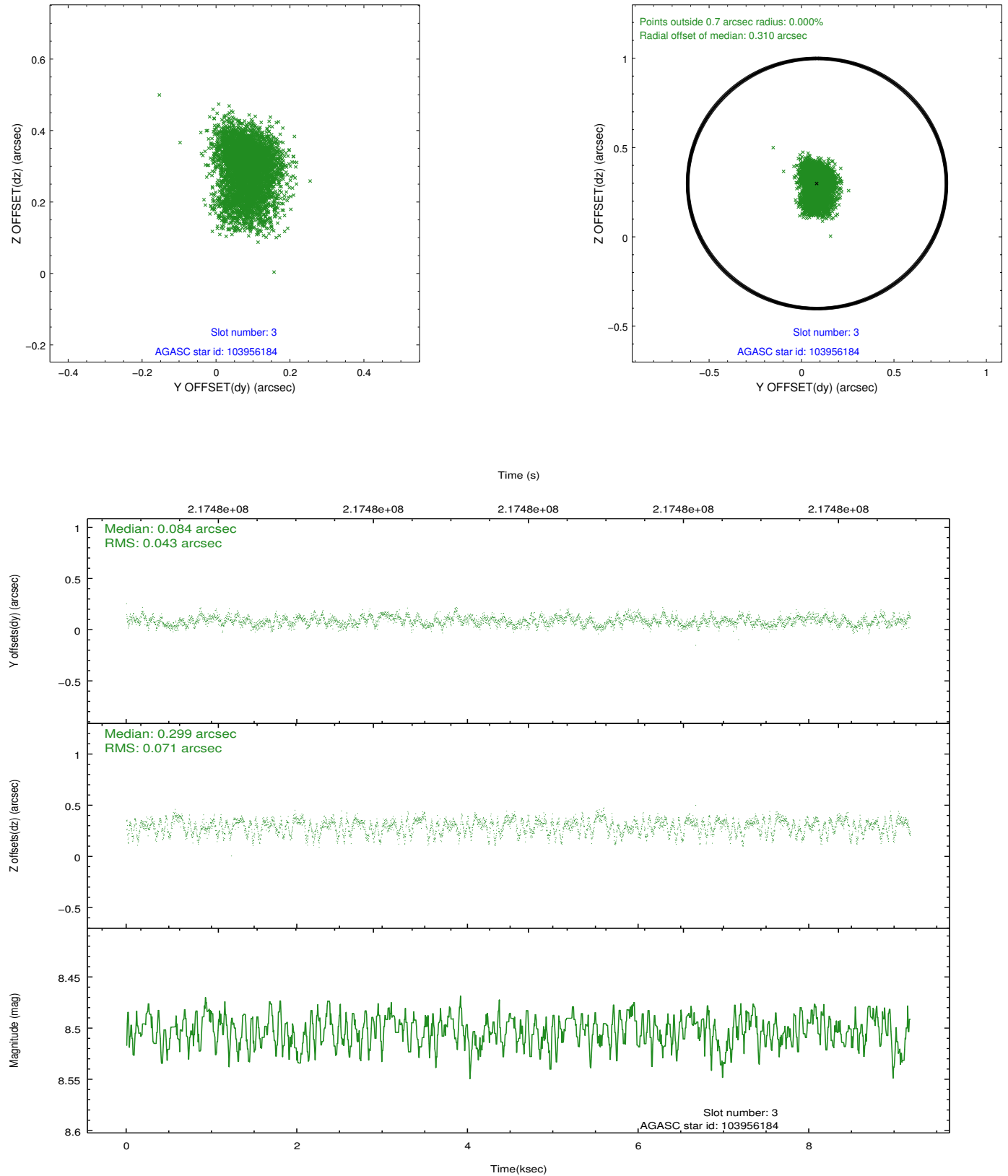


Slot Statistics

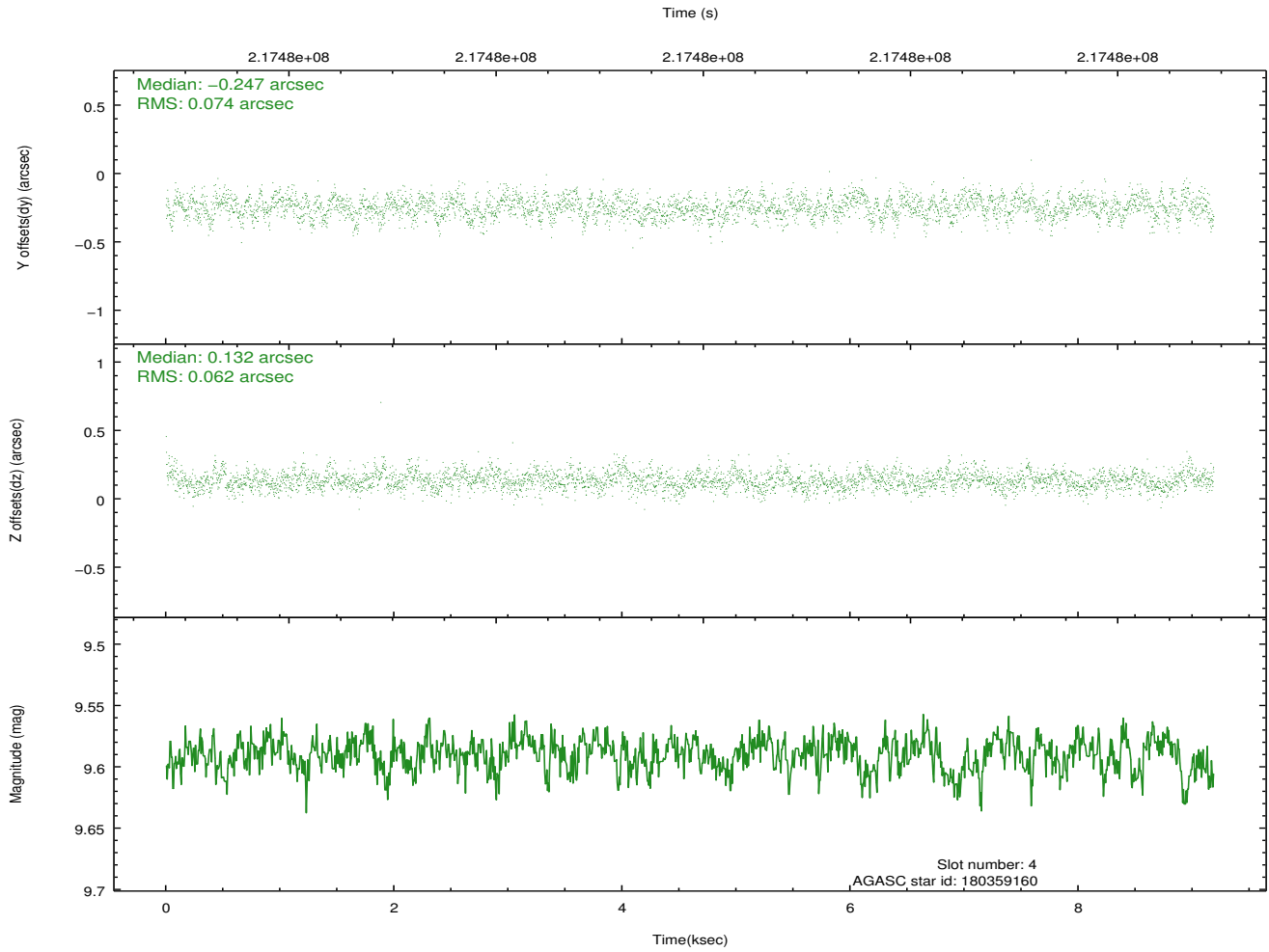
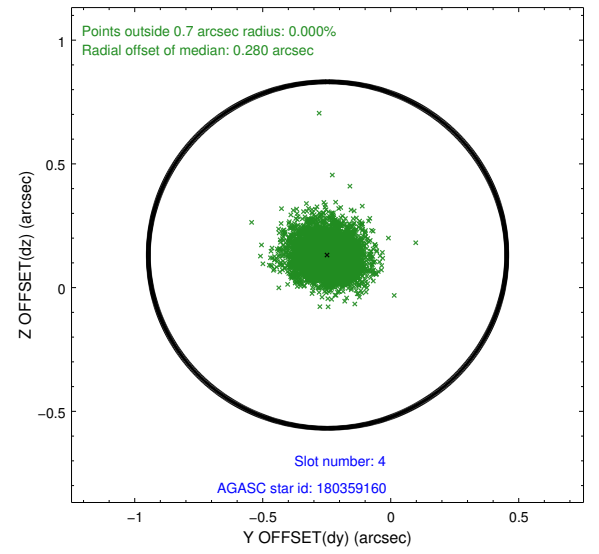
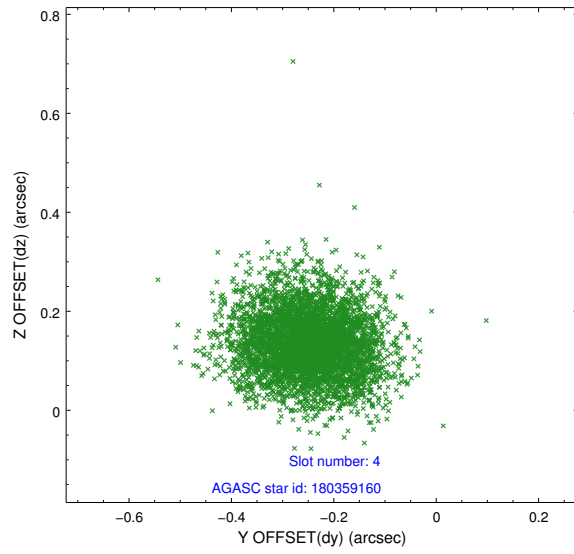
slot	status	id	mag	n_pts	med_dy	med_dz	dr1	dr2	ra	dec	mean_y	mean_z
0	FID	ACIS-S-2	7.10	2241	-0.040	-0.021	0.006	0.011	0.000000	0.000000	-760.57	-1731.28
1	FID	ACIS-S-4	7.21	2240	0.098	0.025	0.006	0.010	0.000000	0.000000	2152.53	176.71
2	FID	ACIS-S-5	7.23	2241	-0.089	0.005	0.007	0.012	0.000000	0.000000	-1812.75	170.93
3	GUIDE	103956184	8.50	4481	0.084	0.299	0.087	0.147	122.093586	14.853591	-1592.93	-2169.99
4	GUIDE	180359160	9.59	4479	-0.247	0.132	0.102	0.167	121.837257	16.020694	2239.15	-232.78
5	GUIDE	180370112	8.38	4481	0.065	-0.085	0.072	0.117	121.144488	15.364256	-657.48	1488.48
6	GUIDE	180372496	7.93	4482	0.083	0.072	0.067	0.103	121.745221	15.155380	-853.50	-720.63
7	GUIDE	180367416	9.13	4478	0.020	-0.408	0.107	0.172	120.920648	15.525818	-290.12	2385.94

2.4 Star Slots

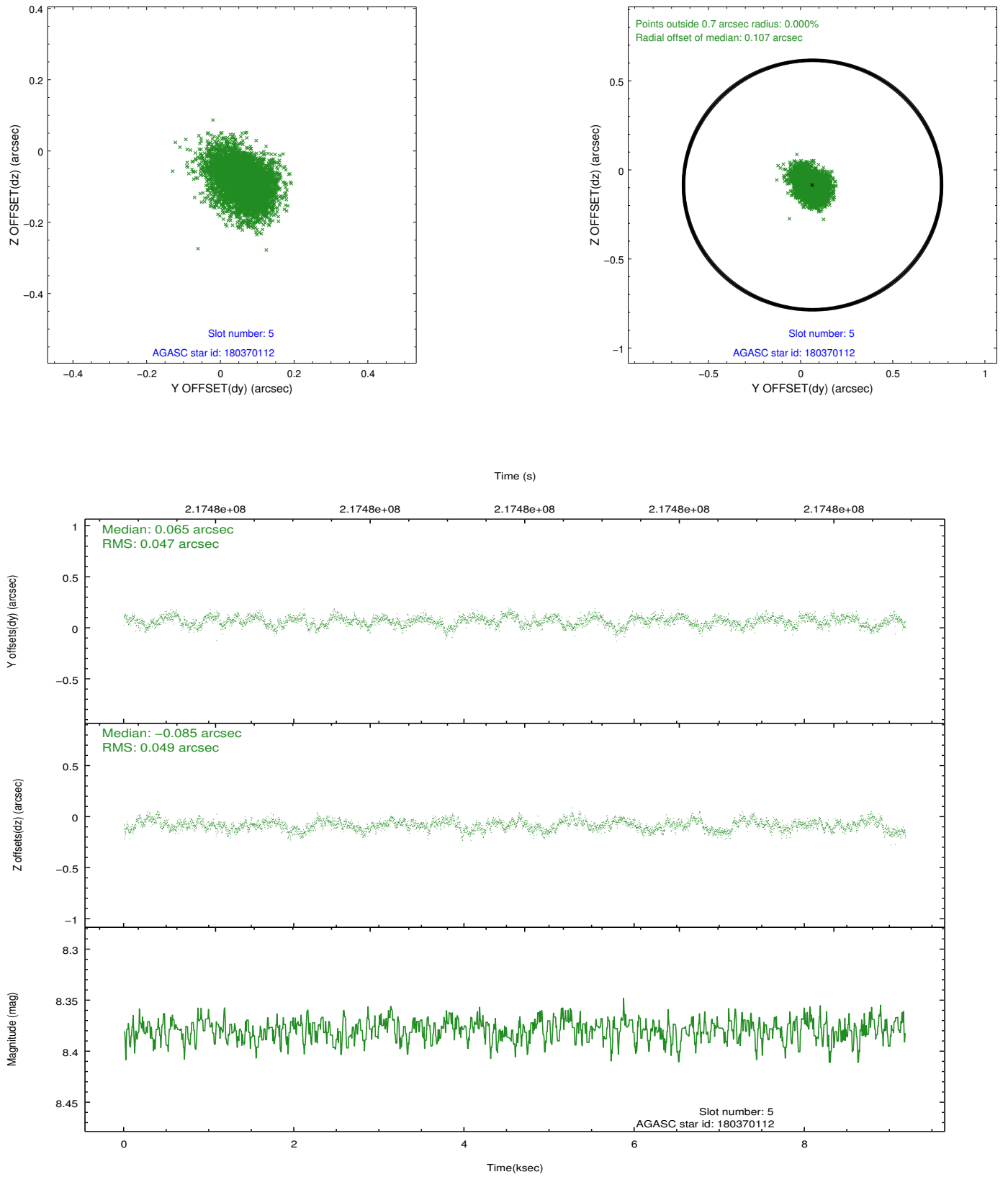
2.4.1 Slot 3



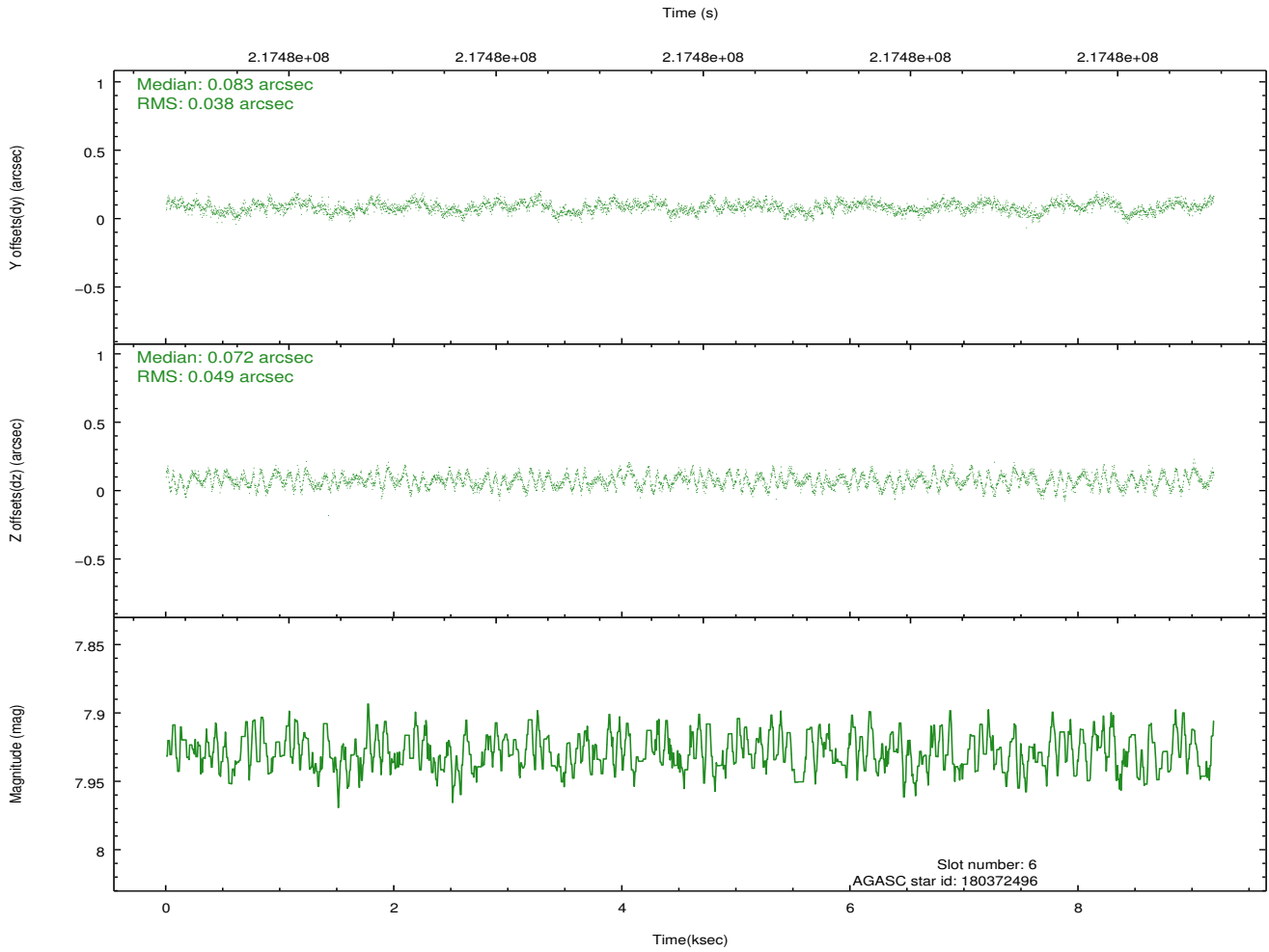
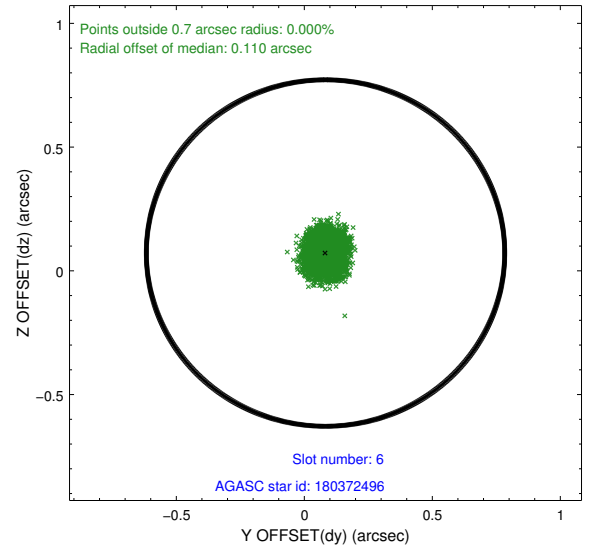
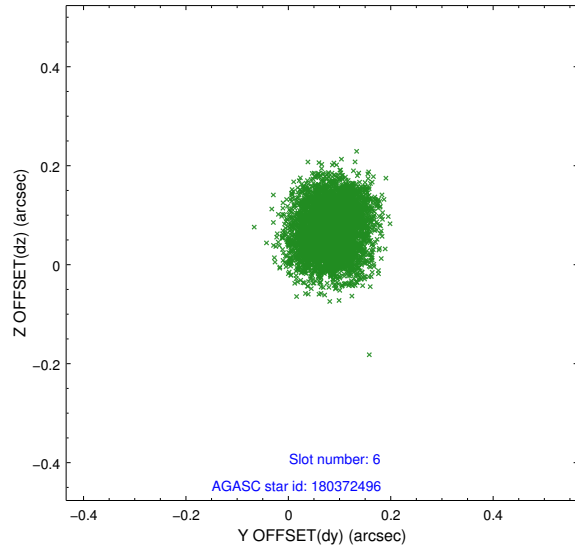
2.4.2 Slot 4



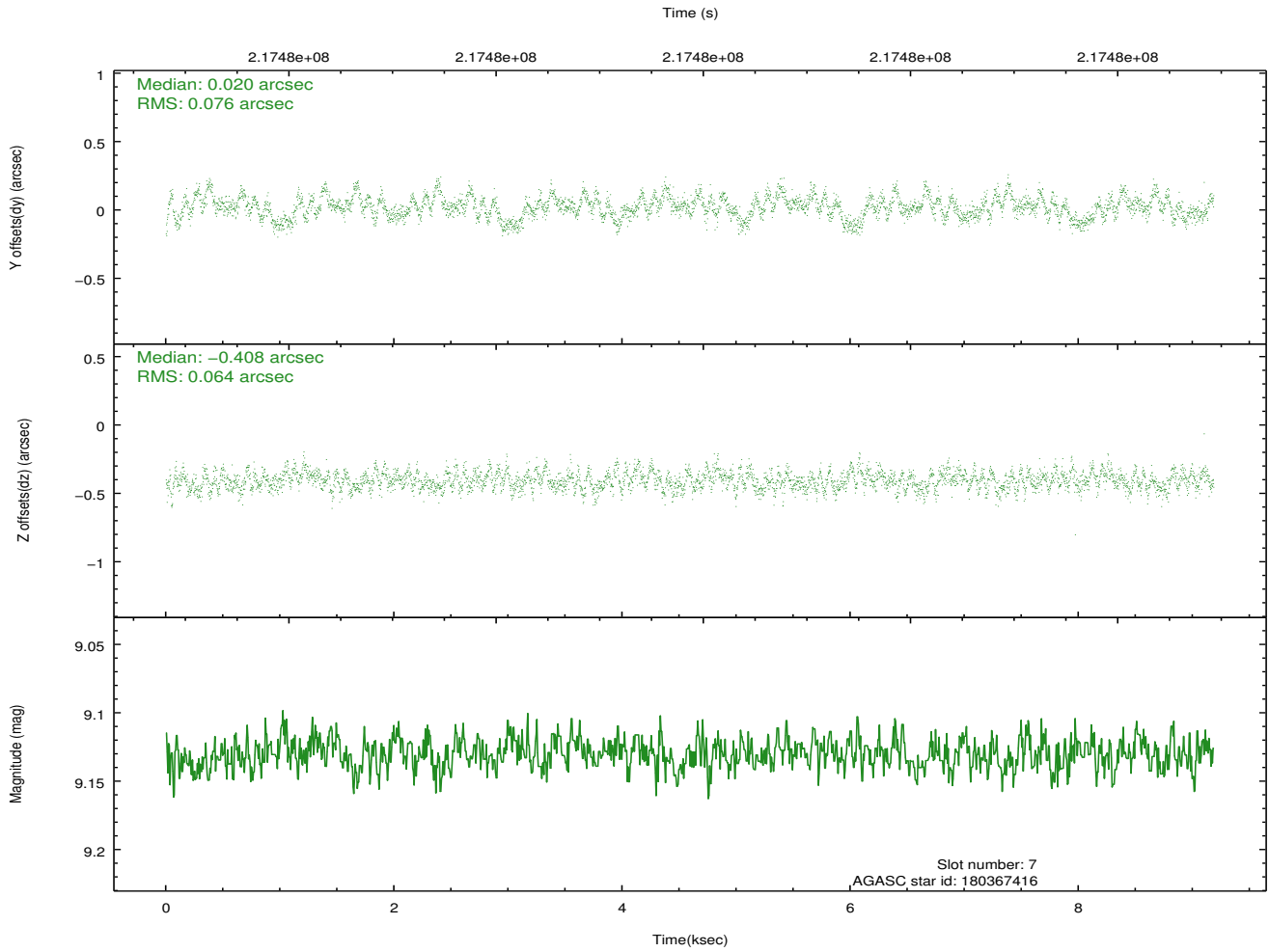
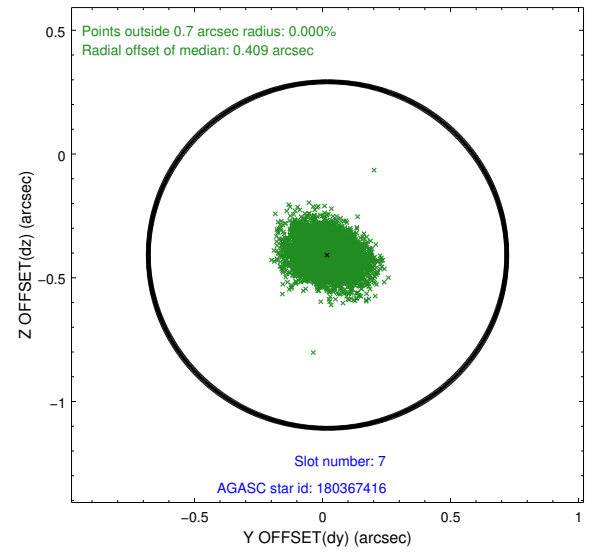
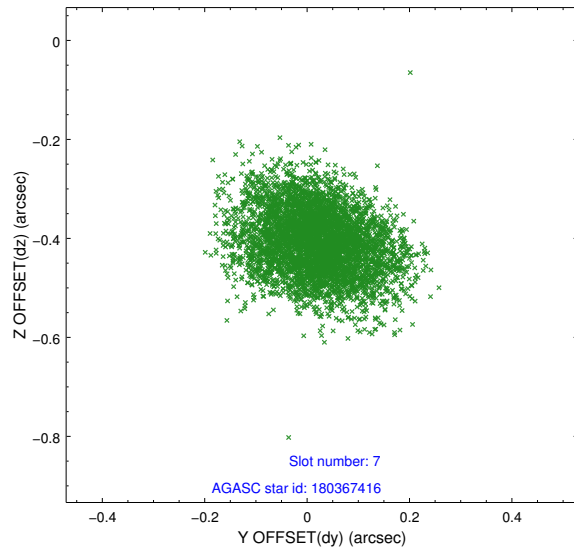
2.4.3 Slot 5



2.4.4 Slot 6

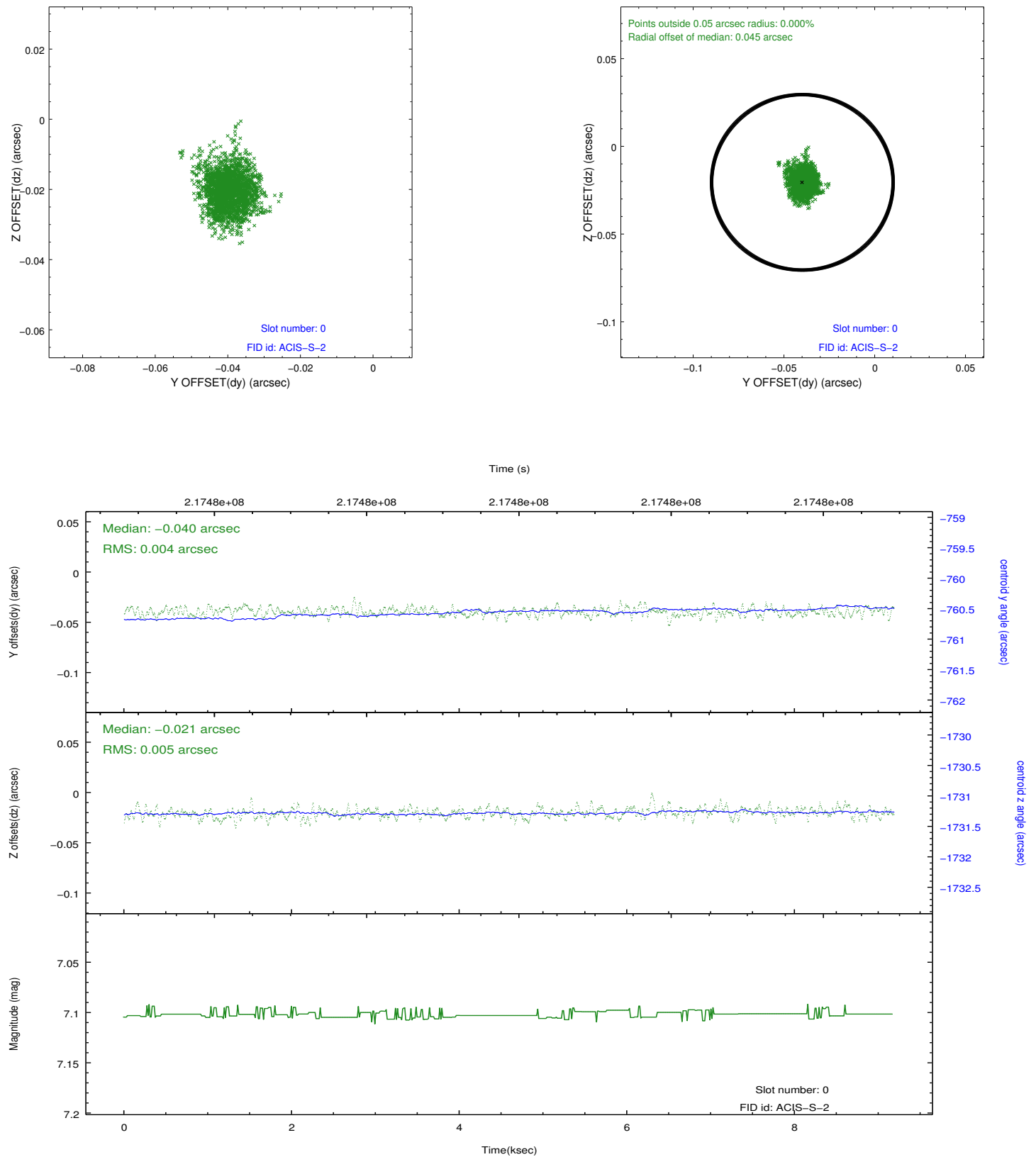


2.4.5 Slot 7

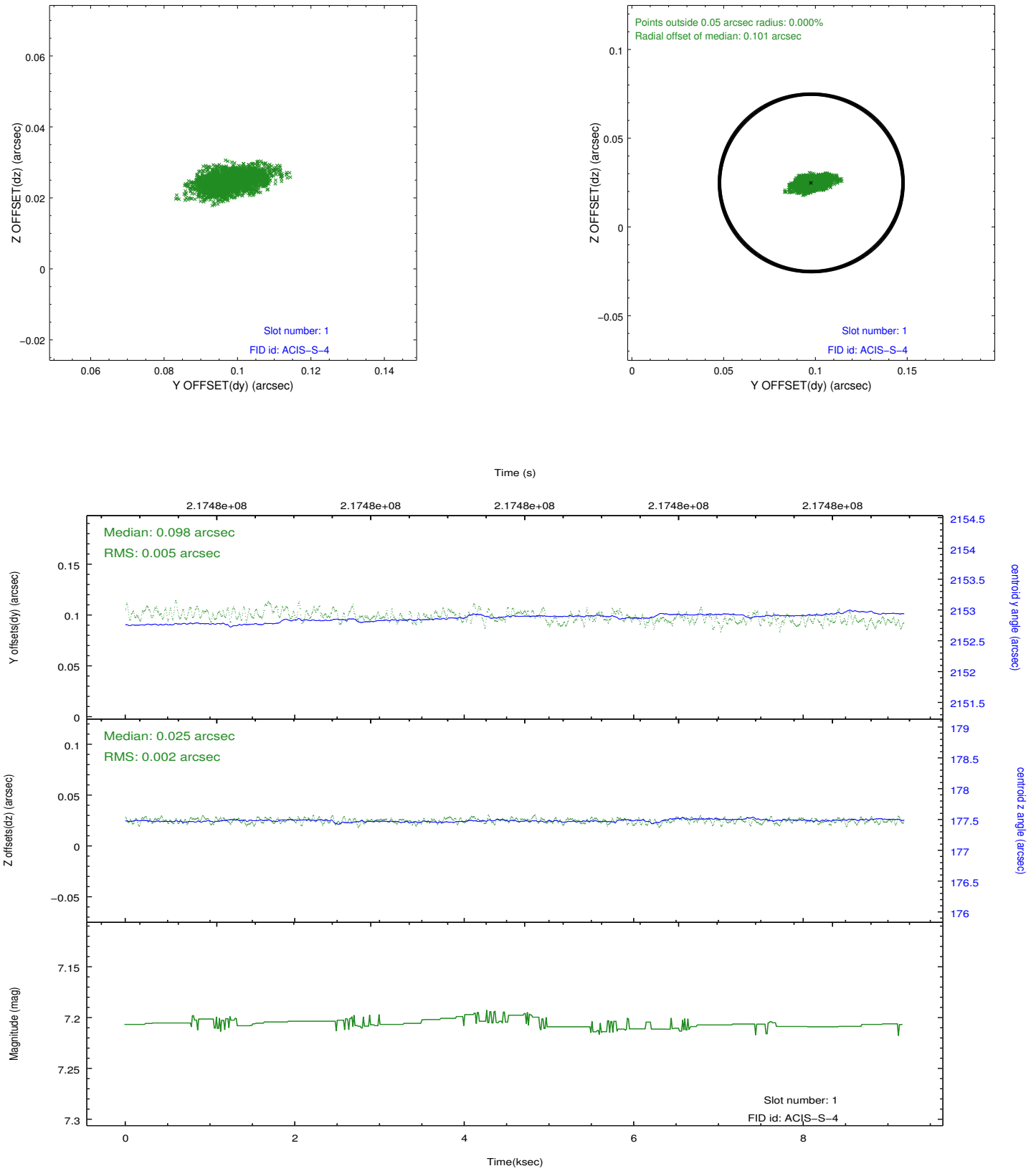


2.5 FID Slots

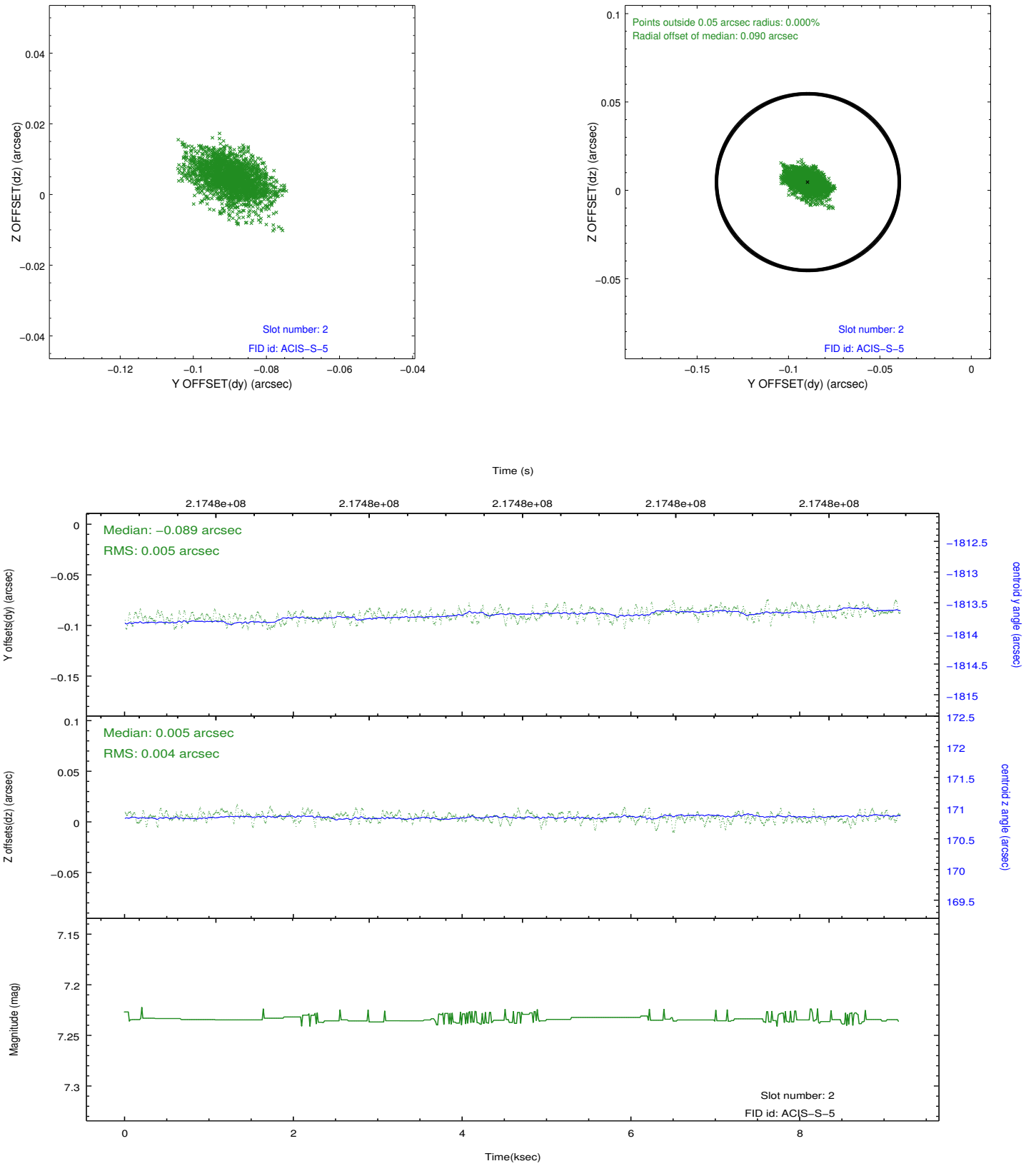
2.5.1 Slot 0



2.5.2 Slot 1



2.5.3 Slot 2



A Summary

A.1 Status

V&V Scientist	Joy Nichols
V&V Date (YYYY-MM-DD)	2013.01.14
V&V Edition	1
V&V Disposition and Status	OK
V&V Charge Time	9.183

A.2 Comments