

V&V Reference Report

L2 ASCDS Version : 7.6.8

Observation 5252 - L2 Version 001
Chandra X-Ray Center

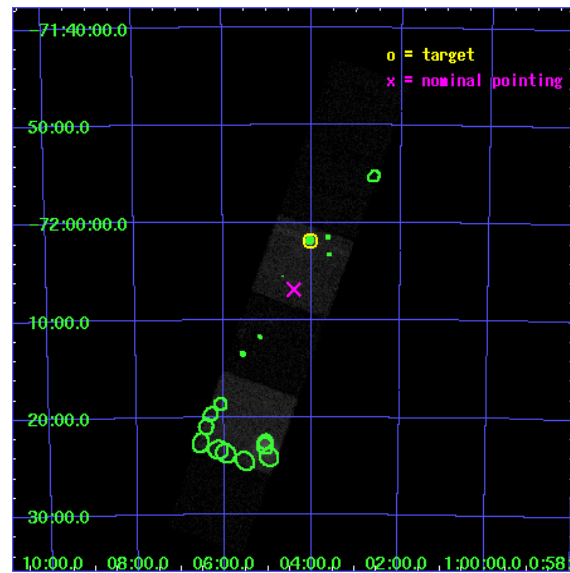
L2 Processing Date : Jun 22 2006

Contents

1	Front	2
2	OBI	3
2.1	OBI	3
2.1.1	Images	3
2.1.2	Bias	3
2.1.3	Parameters	4
2.1.4	Events	4
2.2	Compared Parameters	5
2.3	Aspect	6
2.4	Star Slots	9
2.4.1	Slot 3	9
2.4.2	Slot 4	10
2.4.3	Slot 5	11
2.4.4	Slot 6	12
2.4.5	Slot 7	13
2.5	FID Slots	14
2.5.1	Slot 0	14
2.5.2	Slot 1	15
2.5.3	Slot 2	16
3	Point Sources	17
A	Summary	18
A.1	Status	18
A.2	Comments	18

1 Front

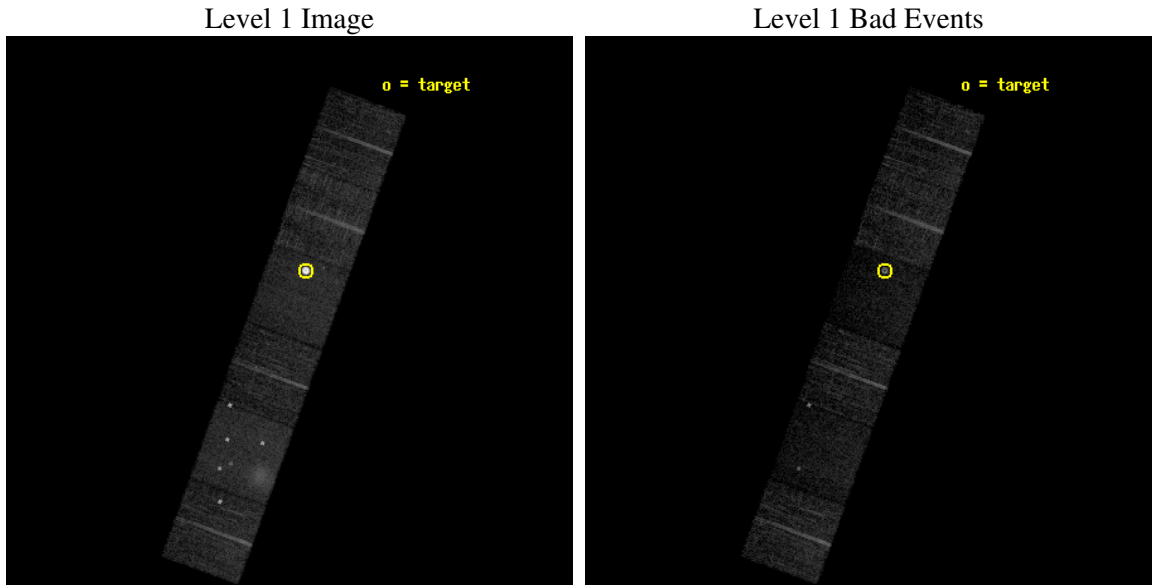
seq_num	590368
obs_id	5252
title	AO5A ACIS-S Calibration Observations of E0102-72
observer	Dr. CXC Calibration
object	E0102-72[S3,-120,-1,0,0]
dtcycle	0
cycle	P
ra_targ	16.01
dec_targ	-72.032028
ra_nom	16.100730603138
dec_nom	-72.11480566364
roll_nom	289.9519658212
revision	2
ontime	7548.7999718785
livetime	7453.212521293
ontime4	7548.7999718785
ontime5	7548.7999718785
ontime6	7548.7999718785
ontime7	7548.7999718785
ontime8	7545.5590015948
ontime9	7548.7999718785
l2events	112681



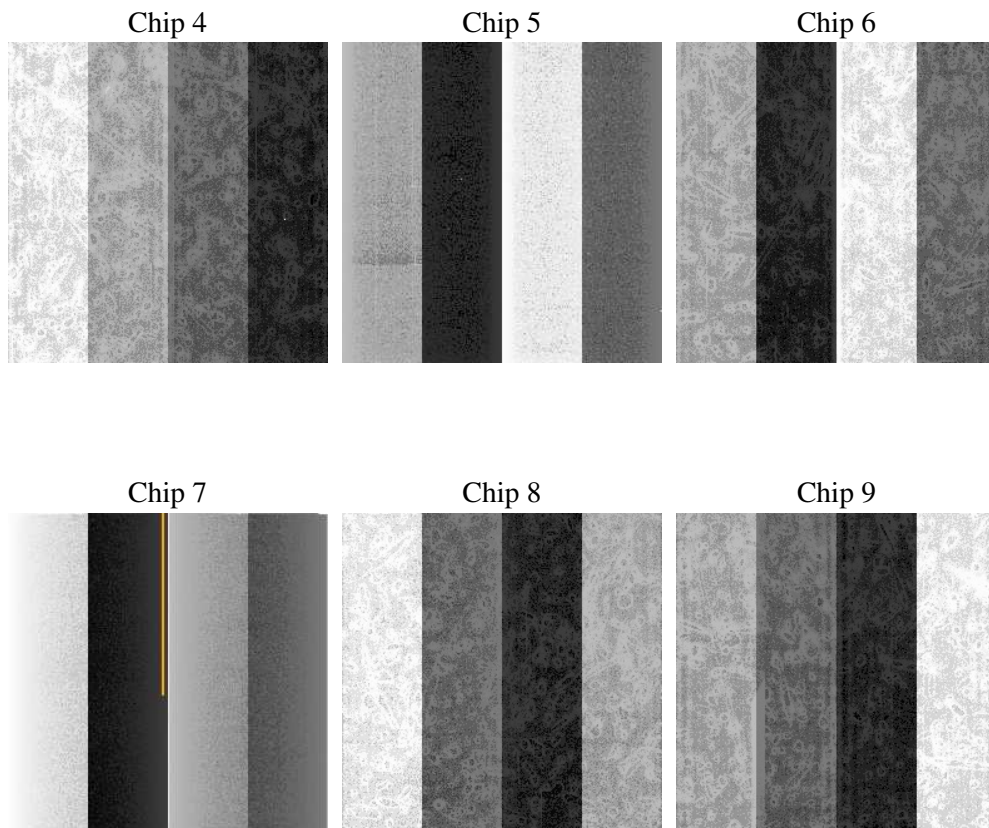
2 OBI

2.1 OBI

2.1.1 Images



2.1.2 Bias



2.1.3 Parameters

obi_num	1
ascdsver	7.6.8
caldsver	3.2.2
date	2006-06-22T07:38:49
revision	2

sched_exp_time	7796.253000
ontime	7554.7730887234
ontime4	7554.7730887234
ontime5	7554.7730887234
ontime6	7554.7730887234
ontime7	7554.7730887234
ontime8	7551.5321184397
ontime9	7554.7730887234
l1events	309537

2.1.4 Events

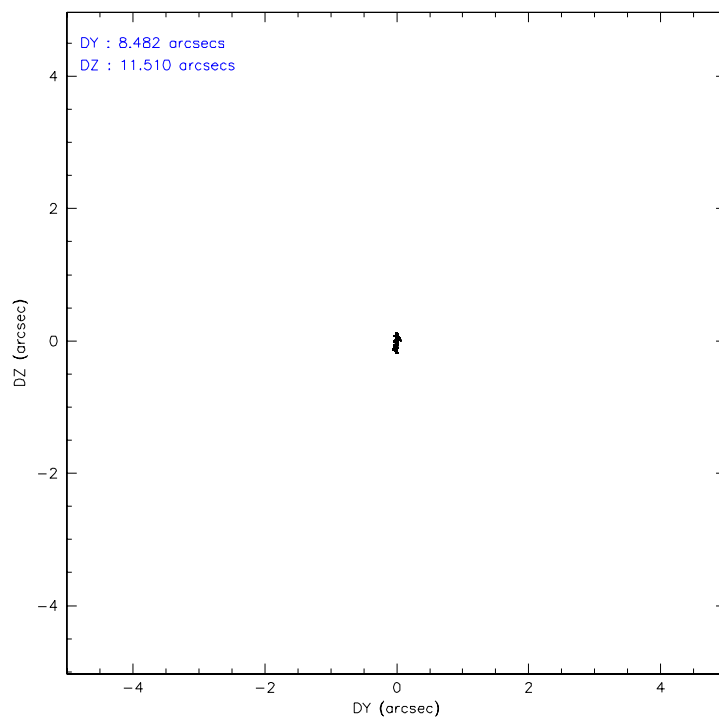
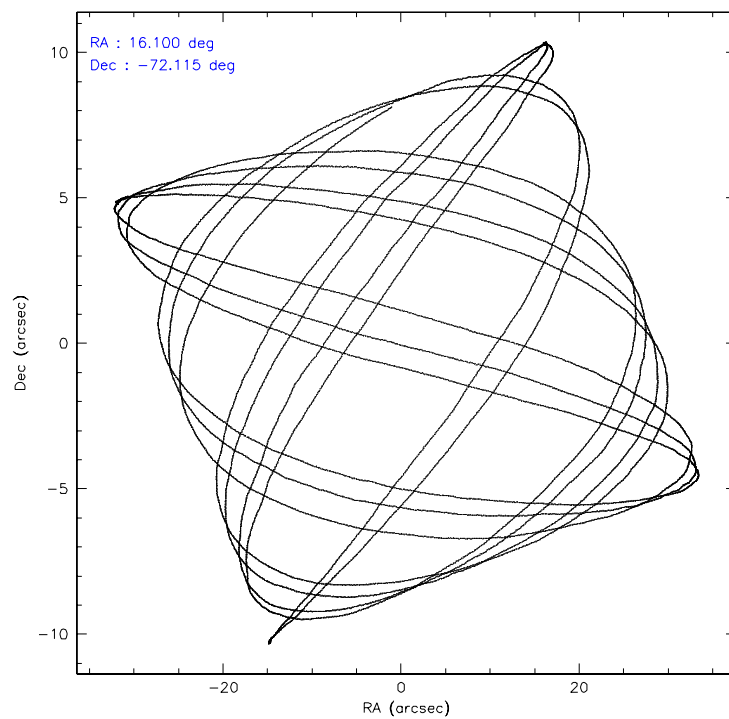
	ccd 4	ccd 5	ccd 6	ccd 7	ccd 8	ccd 9
level 1 events	42999	57496	36870	90807	46900	34465
rejected events	36849	22686	32054	20160	36300	30433
rejected %	85%	39%	86%	22%	77%	88%

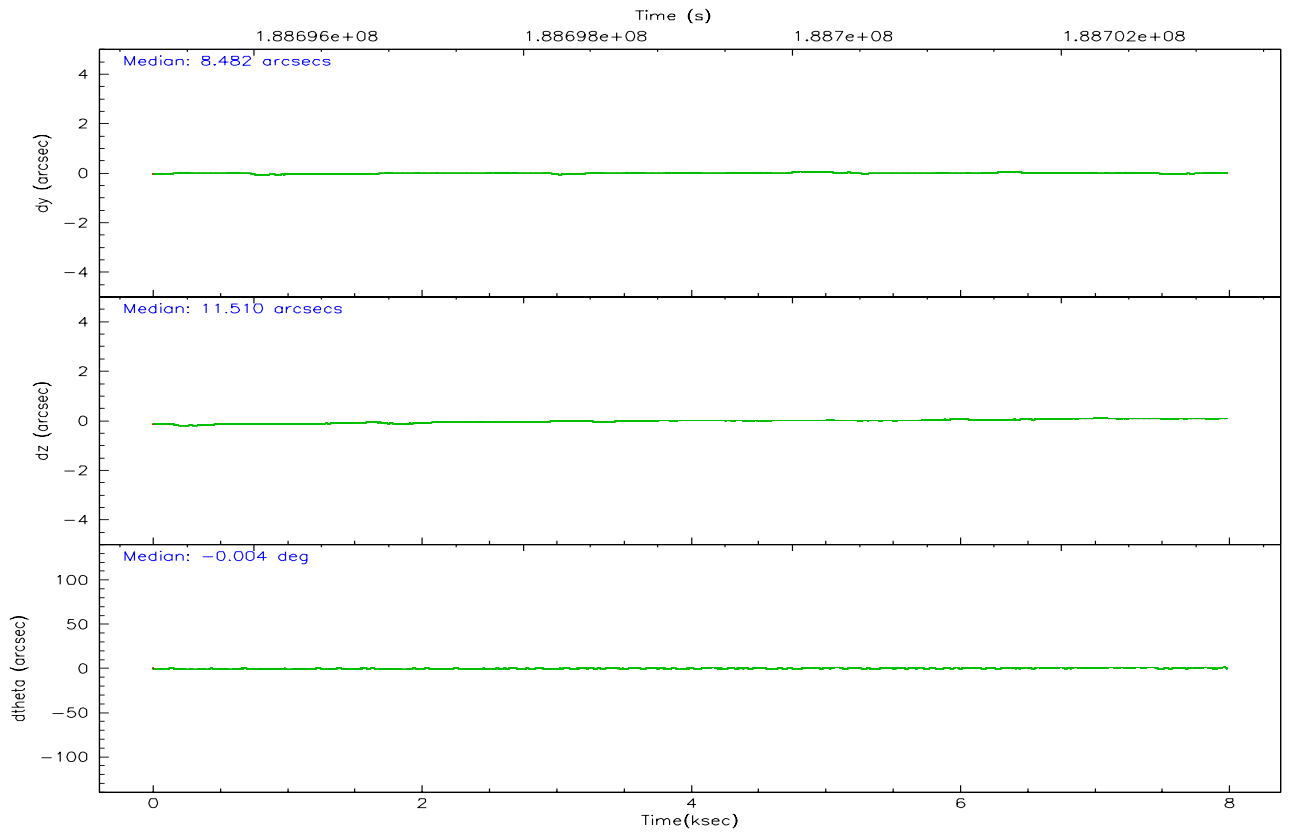
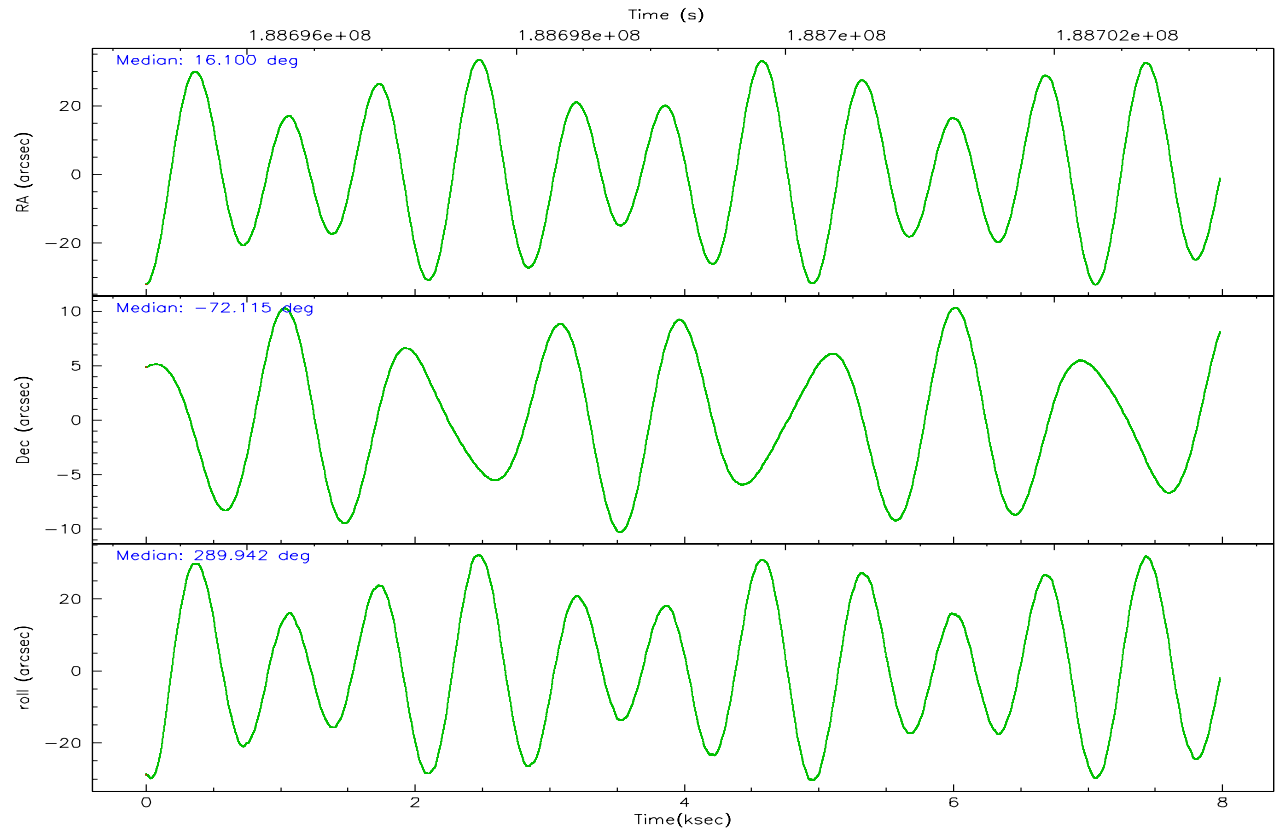
	ccd 4	ccd 5	ccd 6	ccd 7	ccd 8	ccd 9
grade 0 events	3693	8230	2272	19236	3150	1616
	8%	14%	6%	21%	6%	4%
grade 1 events	43	304	15	297	29	28
	0%	0%	0%	0%	0%	0%
grade 2 events	970	9770	893	19265	2429	774
	2%	16%	2%	21%	5%	2%
grade 3 events	443	1443	464	7375	1121	453
	1%	2%	1%	8%	2%	1%
grade 4 events	407	1206	404	7228	1064	383
	0%	2%	1%	7%	2%	1%
grade 5 events	1205	3030	1243	3585	1801	1292
	2%	5%	3%	3%	3%	3%
grade 6 events	639	14179	786	17562	2840	808
	1%	24%	2%	19%	6%	2%
grade 7 events	35599	19334	30793	16259	34466	29111
	82%	33%	83%	17%	73%	84%

2.2 Compared Parameters

Parameter	Planned	Actual	Parameter	Planned	Actual
Instrument	ACIS	ACIS	Obspar format version number	6	6
Detector	ACIS-456789	ACIS-456789	Obspar file type	PREDICTED	ACTUAL
Grating	NONE	NONE	Obspar update status	NONE	UPDATED
Data mode	VFAINT	VFAINT	On-chip summing requested	N	N
Observation mode	POINTING	POINTING	Subarray requested	NONE	NONE
Pointing RA	16.032236	16.1007306031383	Alternating exposures requested	N	N
Pointing Dec	-72.097538	-72.1148056636403	Primary exposure time	0.000000	3.2
Pointing Roll	289.730157	289.9519658212005			
Window start time	186624064.184000	186624064.184000			
Window stop time	189216064.184000	189216064.184000			
SIM focus pos (mm)	-0.684267	-0.6828225247311905			
SIM defocus (mm)	0	0.001444936568705701			
SIM translation stage pos (mm)	-190.132523	-190.1400660498719			
SIM translation stage offset (mm)	0	0.00754346686406393			
Observation start time	188695435.184000	188695058.44654			
Observation start date	2003-12-24T23:22:51	2003-12-24T23:17:38			
Observation end time	188703231.184000	188703545.44691			
Observation end date	2003-12-25T01:32:47	2003-12-25T01:39:05			
Read mode	TIMED	TIMED			

2.3 Aspect



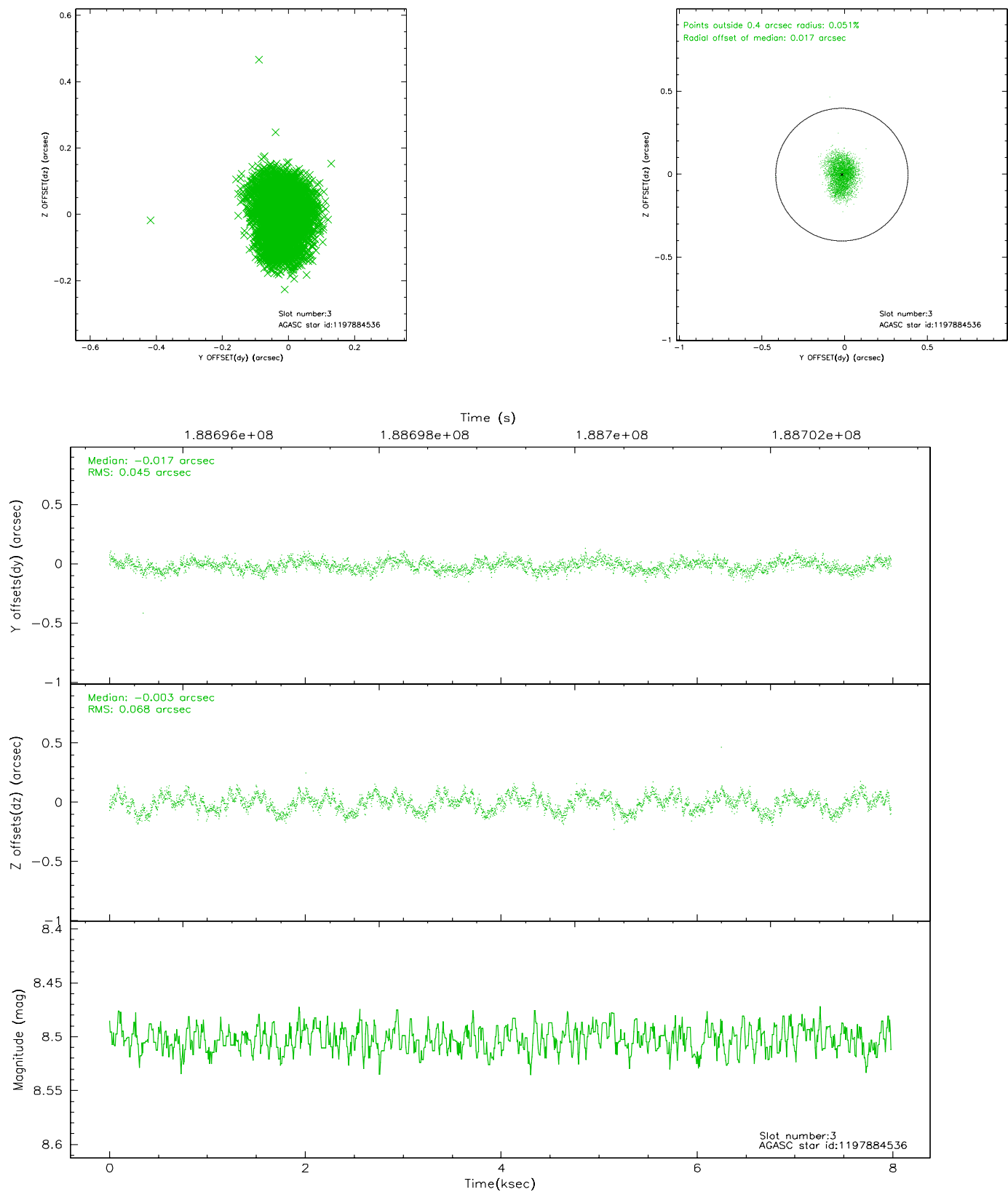


Slot Statistics

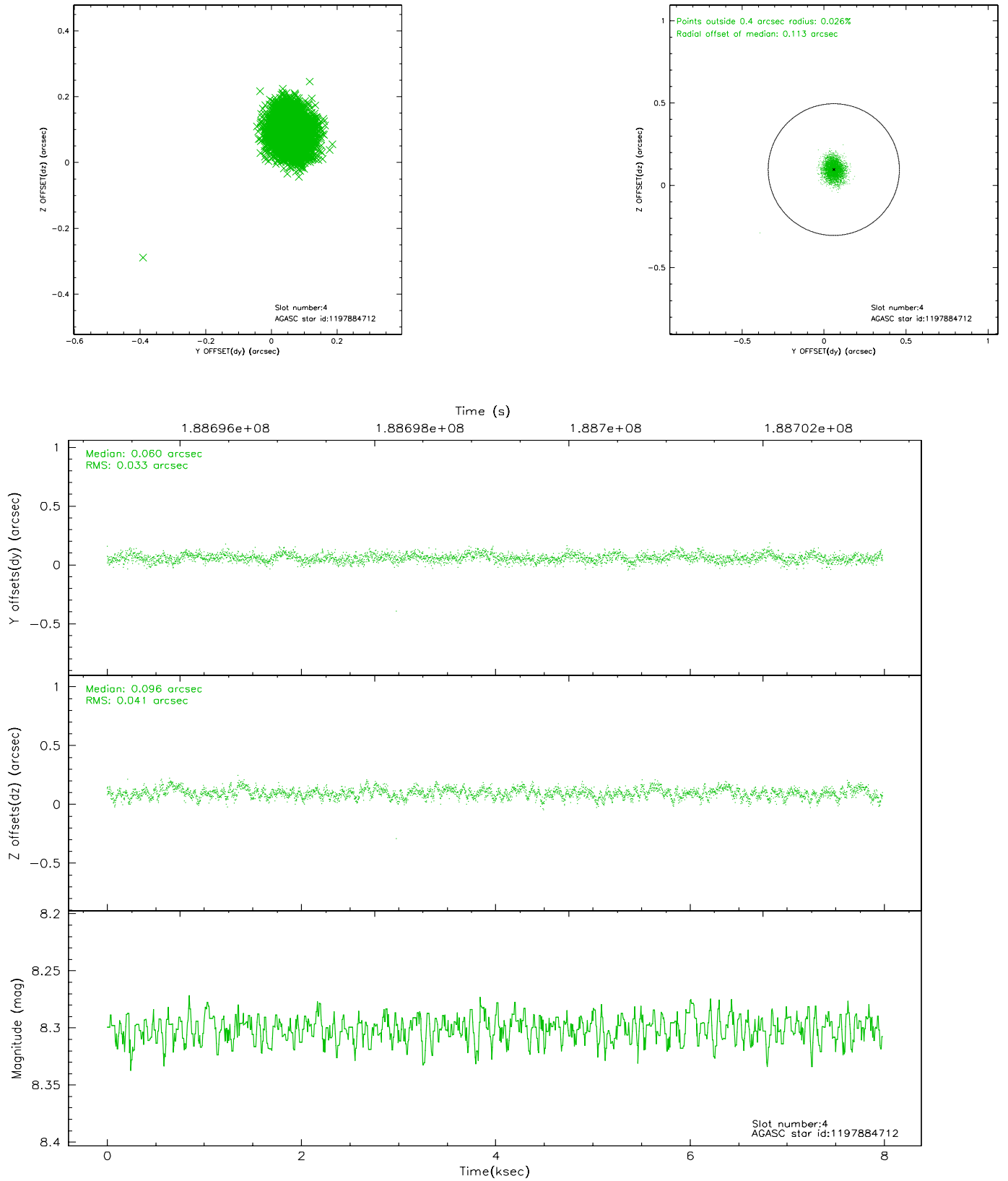
slot	status	id	mag	n_pts	med_dy	med_dz	dr1	dr2	ra	dec	mean_y	mean_z
0	FID	ACIS-S-2	7.10	1948	0.003	0.024	0.006	0.010	0.000000	0.000000	-761.26	-1732.76
1	FID	ACIS-S-4	7.20	1948	0.034	-0.008	0.005	0.009	0.000000	0.000000	2151.72	174.98
2	FID	ACIS-S-5	7.23	1948	-0.068	-0.008	0.006	0.010	0.000000	0.000000	-1813.28	169.43
3	GUIDE	1197884536	8.50	3895	-0.017	-0.003	0.088	0.136	17.160729	-71.835289	-450.08	1506.90
4	GUIDE	1197884712	8.30	3894	0.060	0.096	0.056	0.091	16.087398	-72.252690	546.38	-130.83
5	GUIDE	1197885104	9.35	3891	0.085	-0.019	0.124	0.188	17.845067	-72.189368	1013.57	1757.03
6	GUIDE	1197885328	7.22	3895	-0.038	-0.112	0.060	0.096	16.283090	-71.733943	-1135.76	708.91
7	GUIDE	1198189696	7.38	3894	-0.098	0.042	0.057	0.089	15.223750	-72.697522	1746.53	-1545.25

2.4 Star Slots

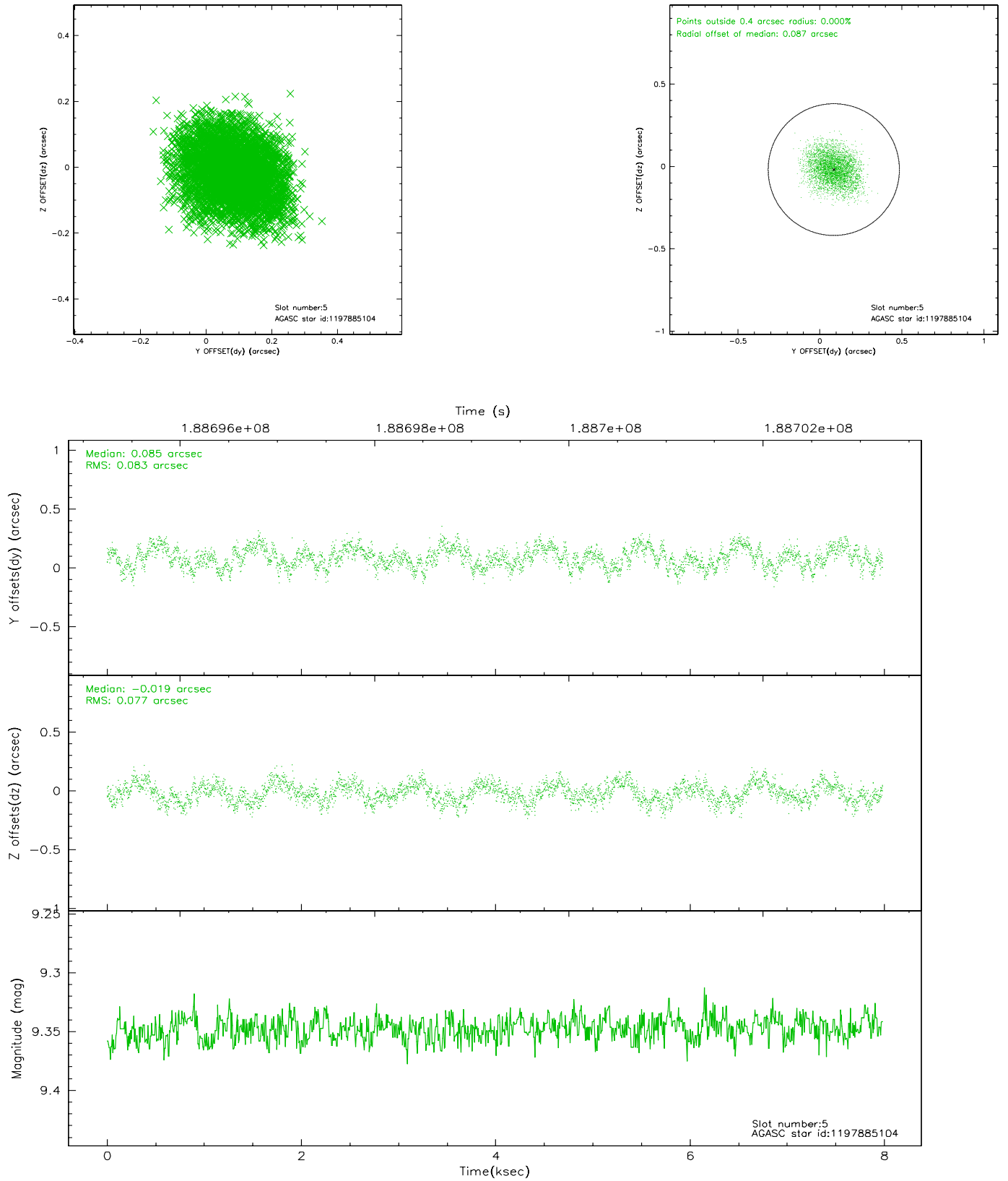
2.4.1 Slot 3



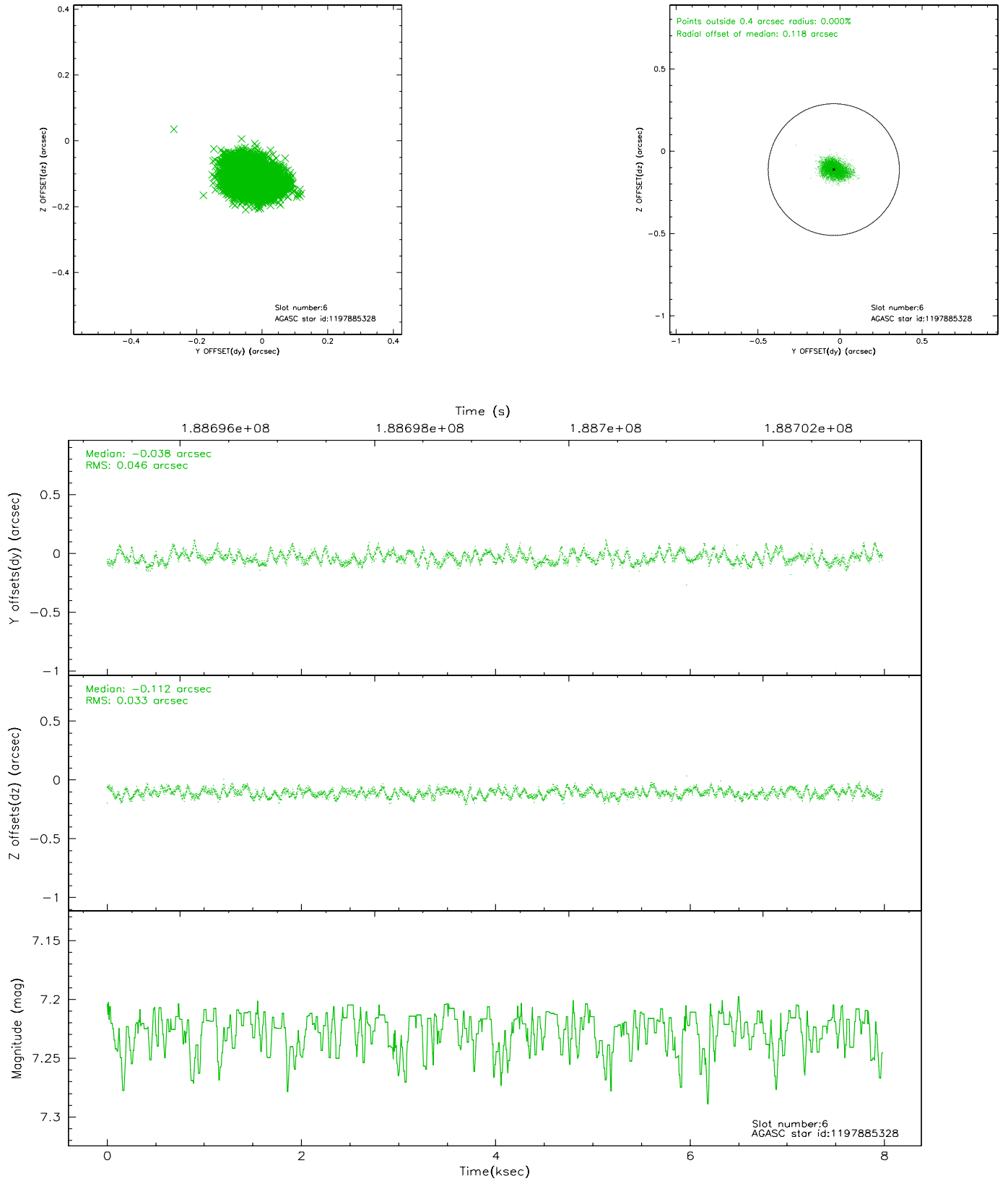
2.4.2 Slot 4



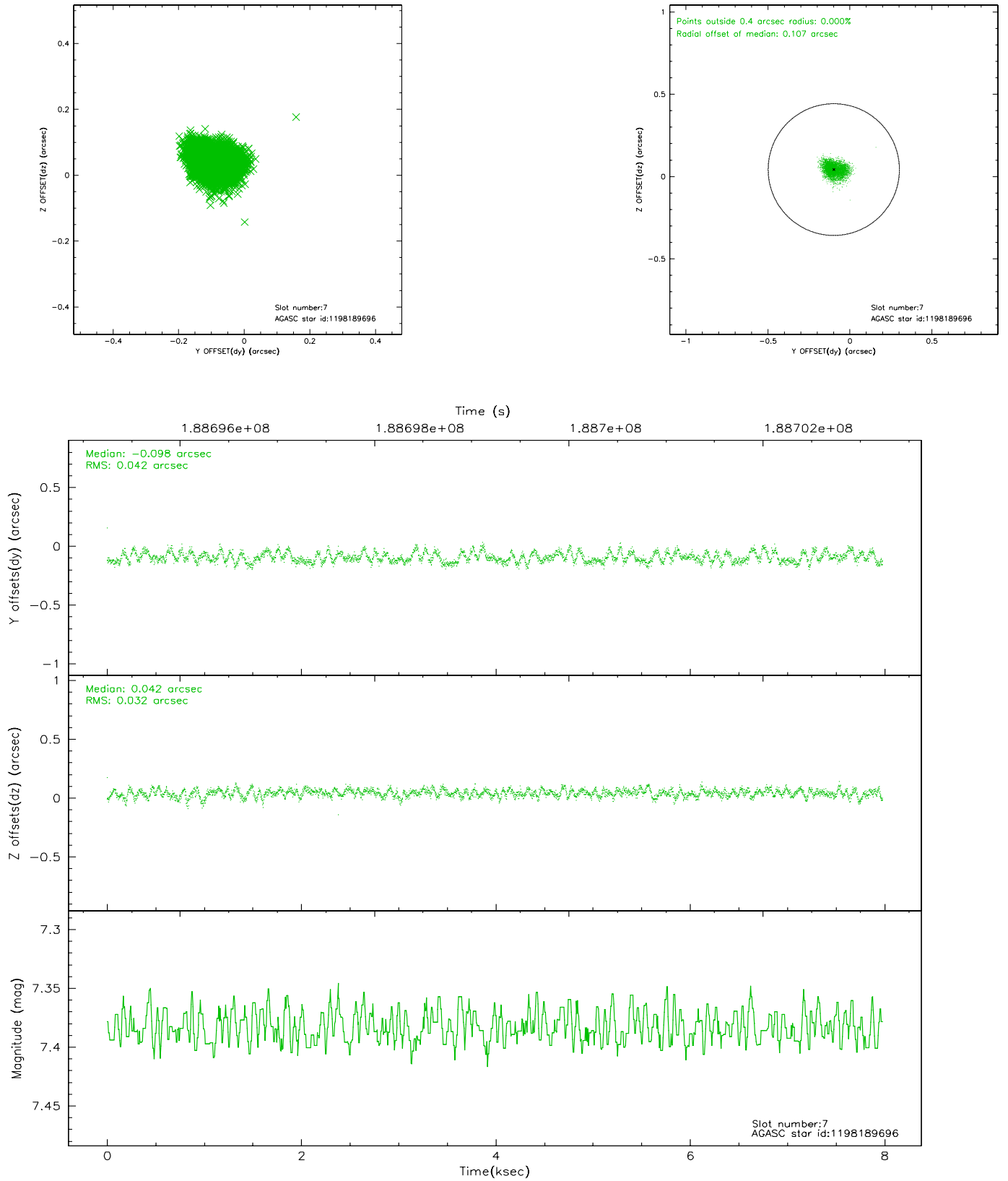
2.4.3 Slot 5



2.4.4 Slot 6

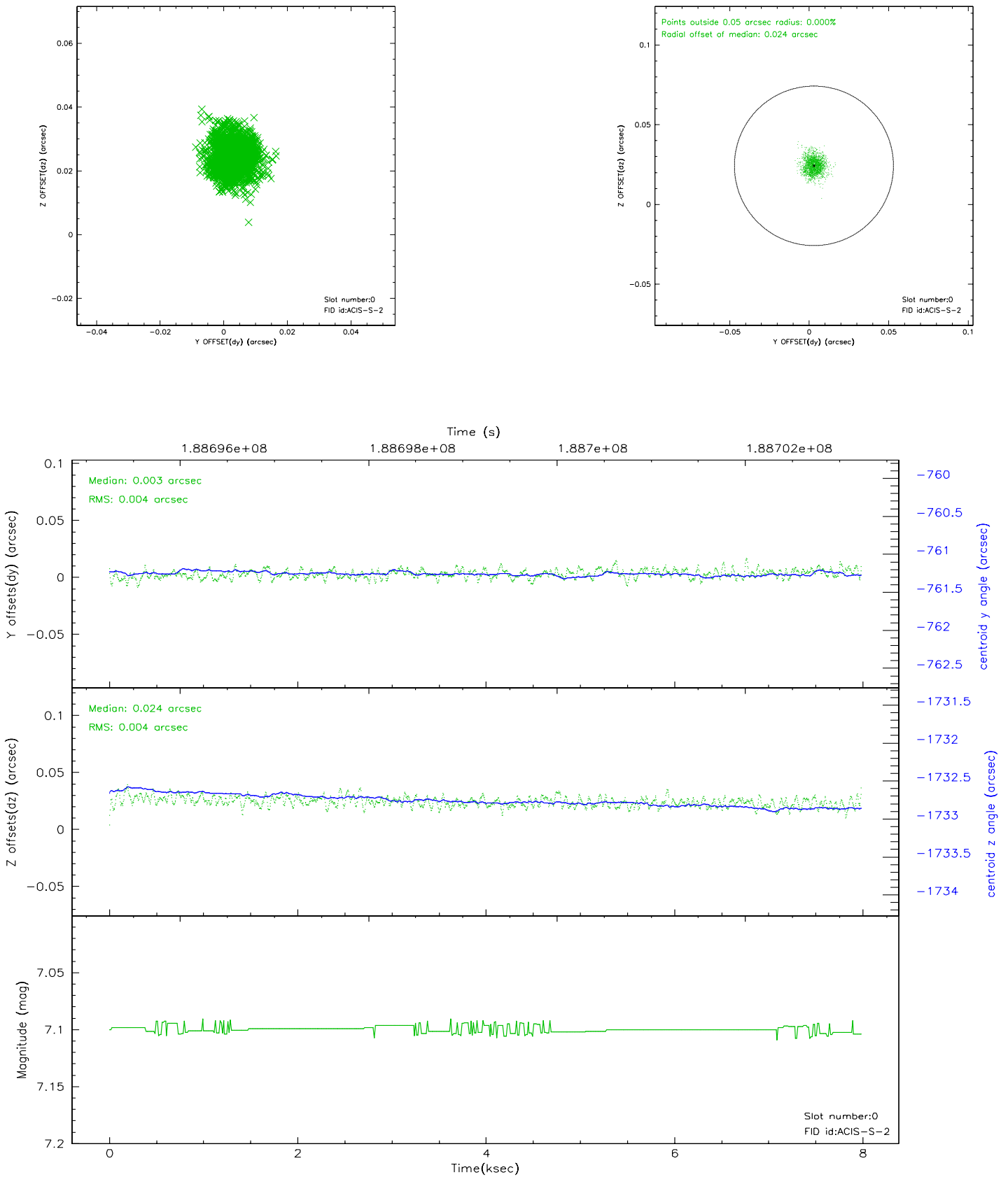


2.4.5 Slot 7

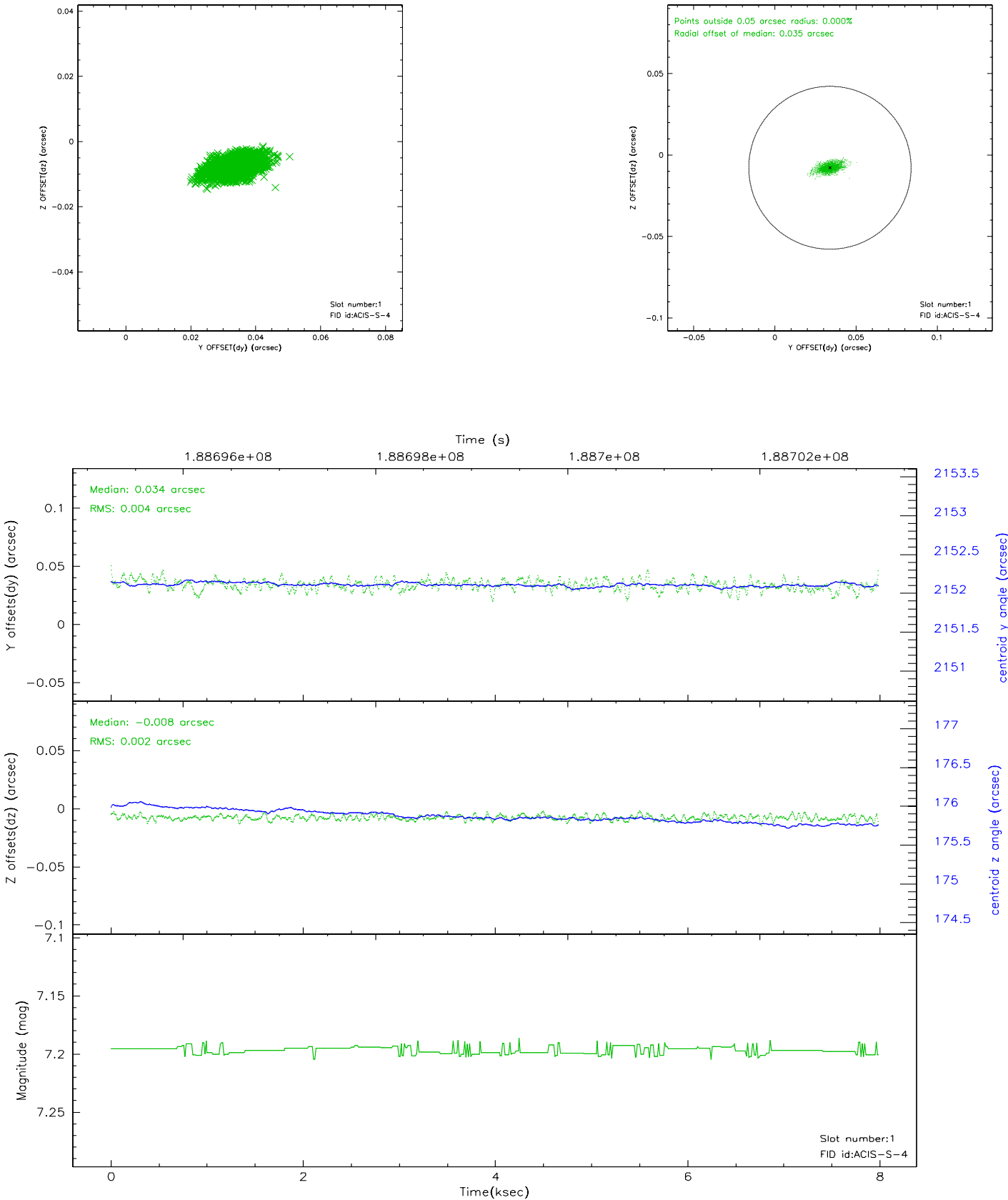


2.5 FID Slots

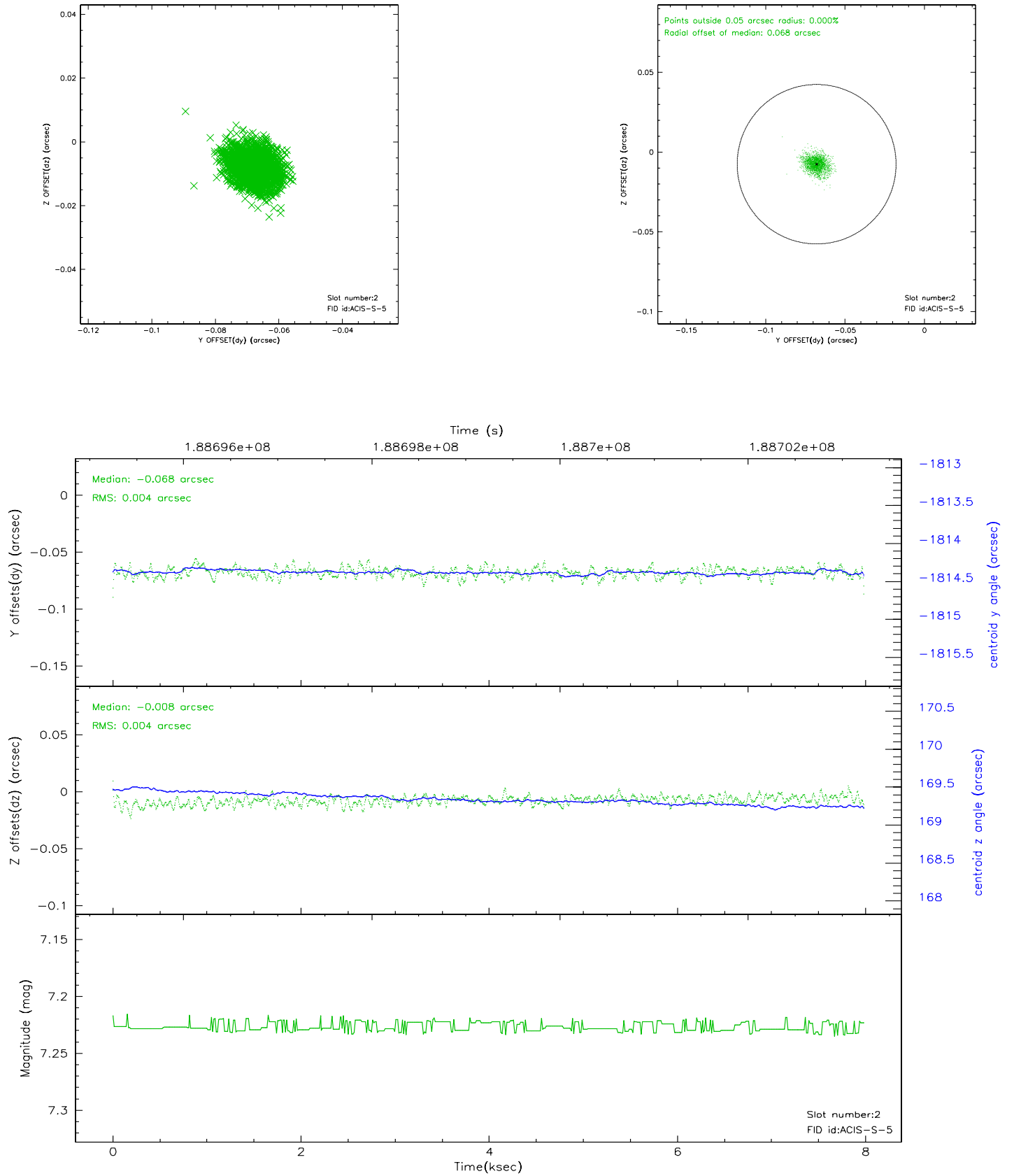
2.5.1 Slot 0



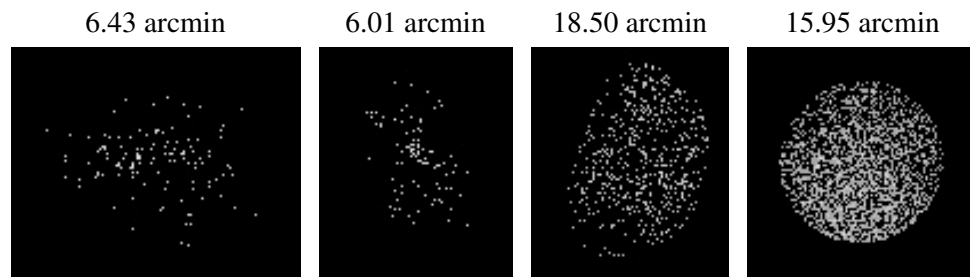
2.5.2 Slot 1



2.5.3 Slot 2



3 Point Sources



A Summary

A.1 Status

V&V Scientist	Jen Lauer
V&V Date (YYYY-MM-DD)	2006.06.22
V&V Edition	1
V&V Disposition and Status	OK
V&V Charge Time	7.548

A.2 Comments

Window constraint met.

On day 356 at about 00:30, the OBA heater stuck in the 'on' position. This situation affected obsid 4901 and all subsequent observations to this point. The result of this anomaly could be a displacement of the target on the chip in the z direction. The displacement will be small because everything is still within spec, but the target may be spatially displaced, have a different point spread function, or trail across the chip.