

V&V Reference Report

L2 ASCDS Version : 10.3.1

Observation 52192 - L2 Version 1
Chandra X-Ray Center

L2 Processing Date : Jan 12 2015

Contents

1	Front	2
2	OBI	3
2.1	OBI	3
2.1.1	Images	3
2.1.2	Bias	3
2.1.3	Parameters	4
2.1.4	Events	4
2.2	Compared Parameters	5
2.3	Star Slots	6
2.4	FID Slots	6
A	Summary	7
A.1	Status	7
A.2	Comments	7

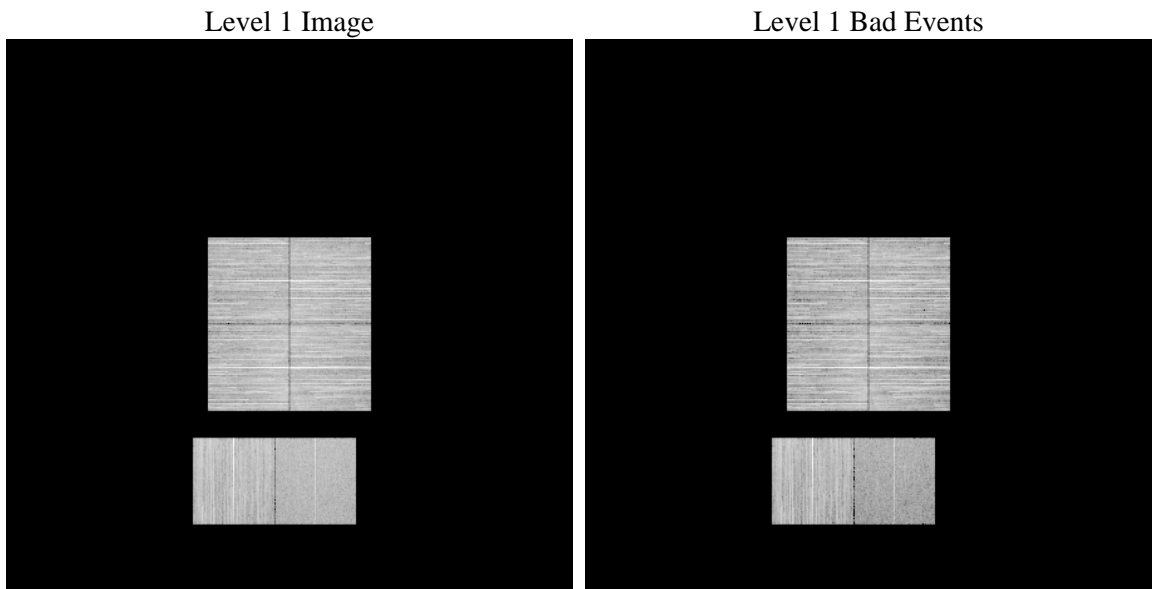
1 Front

seq_num	 	Sequence number
obs_id	52192	Observation id
title	ACIS-012367 diagnostics	Proposal title
observer	CHANDRA engineering request/realtime commanding	Principal investig
object	 	Source name
dtcycle	0	
cycle	P	events from which exps? Prim/Second/Both
ra_targ	0.0	Observer's specified target RA [deg]
dec_targ	0.0	Observer's specified target Dec [deg]
ra_nom	102.97080399226	Nominal RA [deg]
dec_nom	50.977703380851	Nominal Dec [deg]
roll_nom	197.7612845467	Nominal Roll [deg]
revision	1	Processing version of data
ontime	8288.0001235008	Sum of GTIs [s]
livetime	8183.0524755025	Livetime [s]
ontime0	8288.0001235008	Sum of GTIs [s]
ontime1	8288.0001235008	Sum of GTIs [s]
ontime2	8288.0001235008	Sum of GTIs [s]
ontime3	8288.0001235008	Sum of GTIs [s]
ontime6	8288.0001235008	Sum of GTIs [s]
ontime7	8288.0001235008	Sum of GTIs [s]
l2events	162778	Number of level 2 events

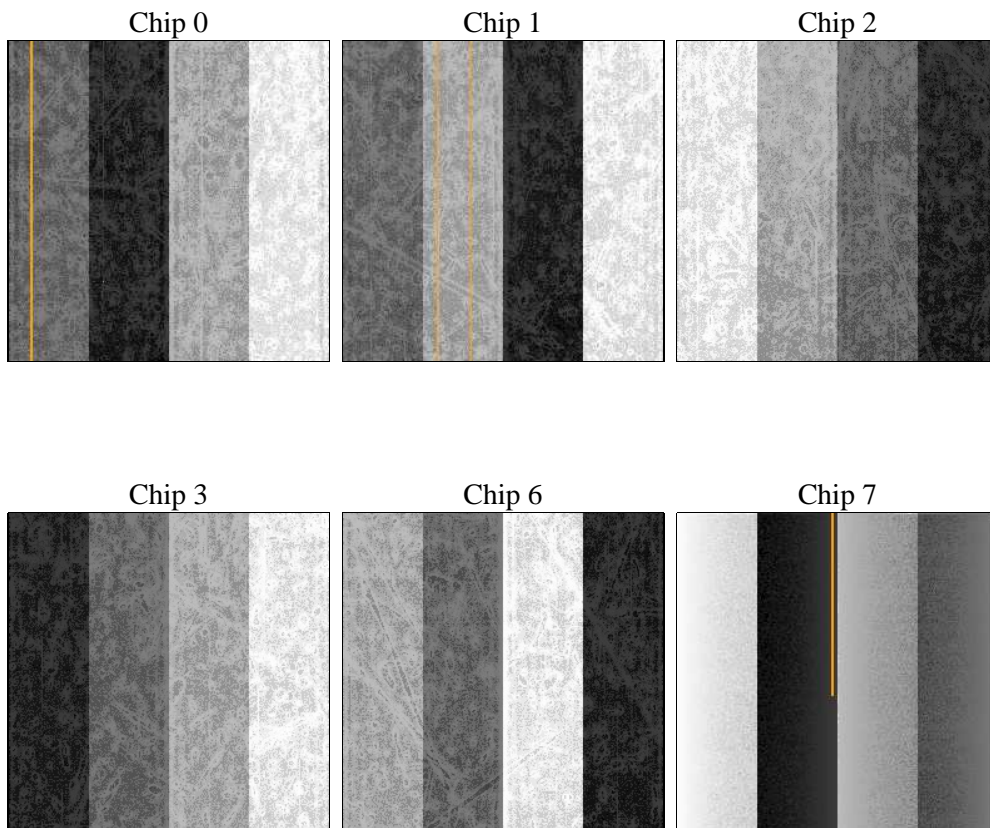
2 OBI

2.1 OBI

2.1.1 Images



2.1.2 Bias



2.1.3 Parameters

obi_num	1	Obi number	sched_exp_time	0.0	[s] Scheduled observation exposure time
ascdsver	10.3.1	Processing system revision	ontime	8288.0001235008	Sum of GTIs [s]
caldsver	4.6.5	 	ontime0	8288.0001235008	Sum of GTIs [s]
date	2015-01-12T07:00:49	Date and time of file creation	ontime1	8288.0001235008	Sum of GTIs [s]
revision	1	Processing version of data	ontime2	8288.0001235008	Sum of GTIs [s]
			ontime3	8288.0001235008	Sum of GTIs [s]
			ontime6	8288.0001235008	Sum of GTIs [s]
			ontime7	8288.0001235008	Sum of GTIs [s]
			l1events	886802	Number of level 1 events

2.1.4 Events

	ccd 0	ccd 1	ccd 2	ccd 3	ccd 6	ccd 7		ccd 0	ccd 1	ccd 2	ccd 3	ccd 6	ccd 7
level 1 events	141125	157582	159946	153591	153424	121134	grade 0 events	11880	11628	12282	12111	11983	6567
rejected events	117047	133406	135762	129688	128364	69389		8%	7%	7%	7%	7%	5%
rejected %	82%	84%	84%	84%	83%	57%	grade 1 events	81	68	67	74	61	87
								0%	0%	0%	0%	0%	0%
							grade 2 events	4883	5183	4835	4640	5260	12628
								3%	3%	3%	3%	3%	10%
							grade 3 events	1697	1596	1713	1744	1651	4236
								1%	1%	1%	1%	1%	3%
							grade 4 events	1657	1701	1713	1760	1700	4152
								1%	1%	1%	1%	1%	3%
							grade 5 events	3040	3128	2771	3237	3152	7972
								2%	1%	1%	2%	2%	6%
							grade 6 events	3970	4082	3648	3648	4477	24187
								2%	2%	2%	2%	2%	19%
							grade 7 events	113917	130196	132917	126377	125140	61305
								80%	82%	83%	82%	81%	50%

2.2 Compared Parameters

Parameter	Planned	Actual	Parameter	Planned	Actual
Instrument	ACIS	ACIS	Obspar format version number	7	7
Detector	ACIS-012367	ACIS-012367	Obspar file type	PREDICTED	ACTUAL
Grating	NONE	NONE	Obspar update status	NONE	UPDATED
Data mode	FAINT	FAINT	Number of optional ACIS chips dropped	0	0
Observation mode	SECONDARY	SECONDARY	On-chip summing requested	N	N
[deg] Pointing RA	0	102.9708039922557	Subarray requested	NONE	NONE
[deg] Pointing Dec	0	50.97770338085103	Alternating exposures requested	N	N
[deg] Pointing Roll	0.0	197.7612845467048	[s] Primary exposure time	3.2	3.2
[mm] SIM focus pos	-1.429586	-1.428180813131781			
[mm] SIM defocus	0.1037507710433287	0.1051558262725154			
[mm] SIM translation stage pos	250.455976	250.466033080201			
[mm] SIM translation stage offset	0	-0.01005468664627074			
[s] Observation start time (MET)	537366421.240182	537366420.21518			
Observation start date	2015-01-11T12:27:01	2015-01-11T12:27:00			
[s] Observation end time (MET)	537377513.790801	537377512.7658			
Observation end date	2015-01-11T15:31:54	2015-01-11T15:31:52			
Read mode	TIMED	TIMED			

2.3 Star Slots

2.4 FID Slots

A Summary

A.1 Status

V&V Scientist	Jen Lauer
V&V Date (YYYY-MM-DD)	2015.01.12
V&V Edition	1
V&V Disposition and Status	OK
V&V Charge Time	8.2880001235008

A.2 Comments