

V&V Reference Report

L2 ASCDS Version : 7.6.7.2

Observation 5192 - L2 Version 001
Chandra X-Ray Center

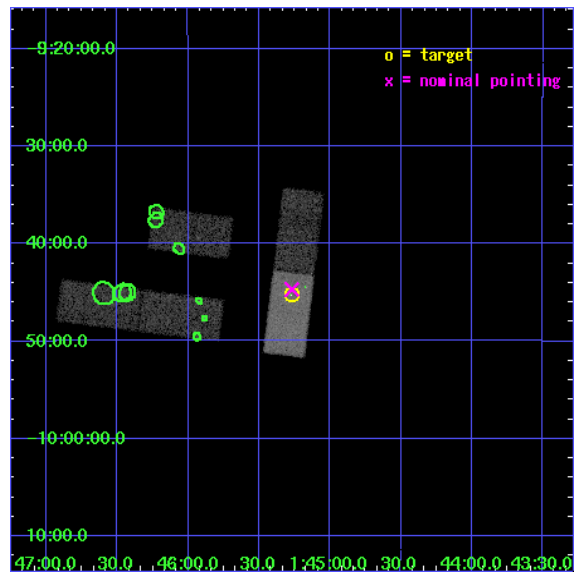
L2 Processing Date : Apr 25 2006

Contents

1	Front	2
2	OBI	3
2.1	OBI	3
2.1.1	Images	3
2.1.2	Bias	3
2.1.3	Parameters	4
2.1.4	Events	4
2.2	Compared Parameters	5
2.3	Aspect	6
2.4	Star Slots	9
2.4.1	Slot 3	9
2.4.2	Slot 4	10
2.4.3	Slot 5	11
2.4.4	Slot 6	12
2.4.5	Slot 7	13
2.5	FID Slots	14
2.5.1	Slot 0	14
2.5.2	Slot 1	15
2.5.3	Slot 2	16
3	Point Sources	17
A	Summary	18
A.1	Status	18
A.2	Comments	18

1 Front

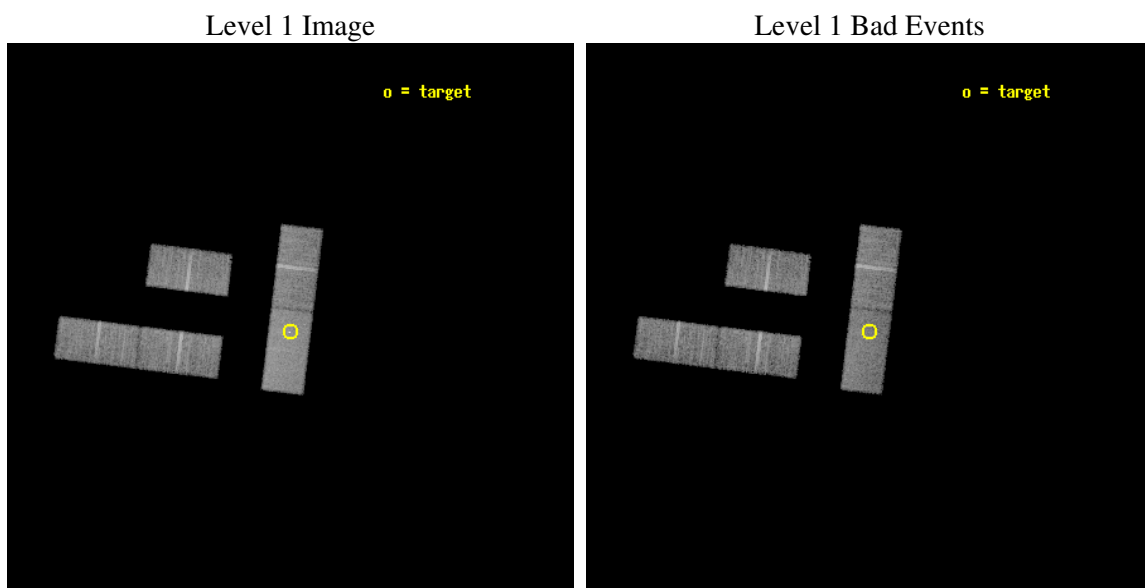
seq_num	701006
obs_id	5192
title	Alternate - A STUDY OF QUASAR EVOLUTION WITH THE AID OF LENSING
observer	Professor Gordon Garmire
object	0142-100
dtcycle	0
cycle	P
ra_targ	26.316667
dec_targ	-9.754167
ra_nom	26.317237602801
dec_nom	-9.7450696380837
roll_nom	97.017239881217
revision	2
ontime	13656.099904239
liveltime	13334.196708408
ontime1	13656.099904239
ontime2	13656.099904239
ontime3	13656.099904239
ontime6	13656.099904239
ontime7	13656.099904239
l2events	49033



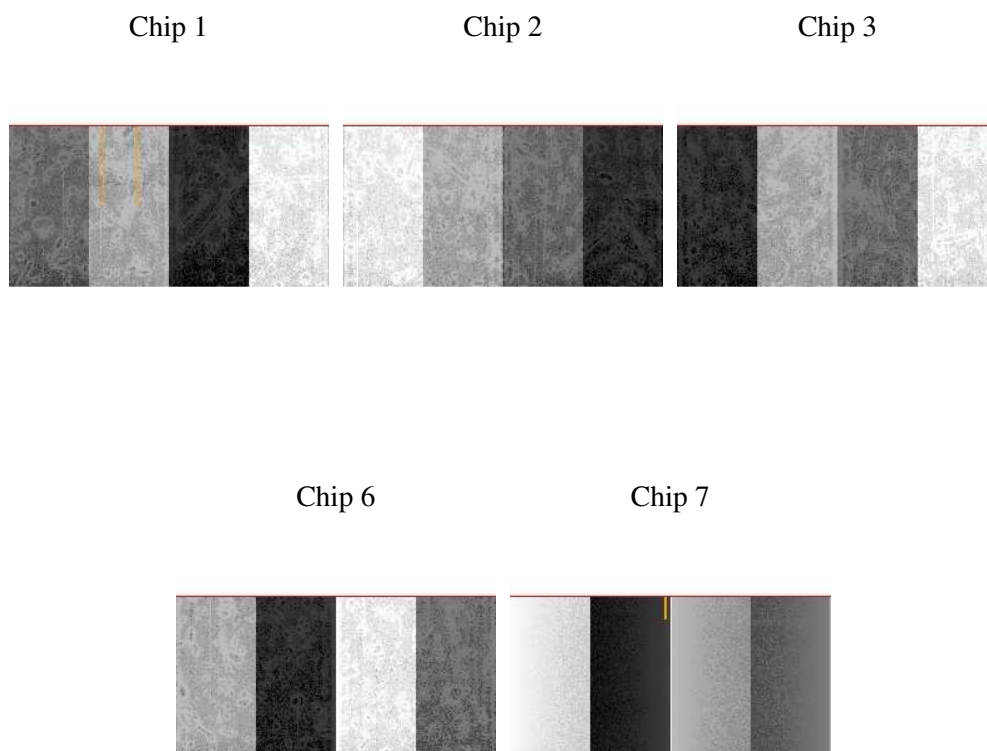
2 OBI

2.1 OBI

2.1.1 Images



2.1.2 Bias



2.1.3 Parameters

obi_num	0
ascdsver	7.6.7.2
caldsver	3.2.1
date	2006-04-25T04:05:20
revision	2

sched_exp_time	13500.000000
ontime	14297.263836771
ontime1	14297.263836771
ontime2	14297.263836771
ontime3	14297.263836771
ontime6	14297.263836771
ontime7	14297.263836771
l1events	298877

2.1.4 Events

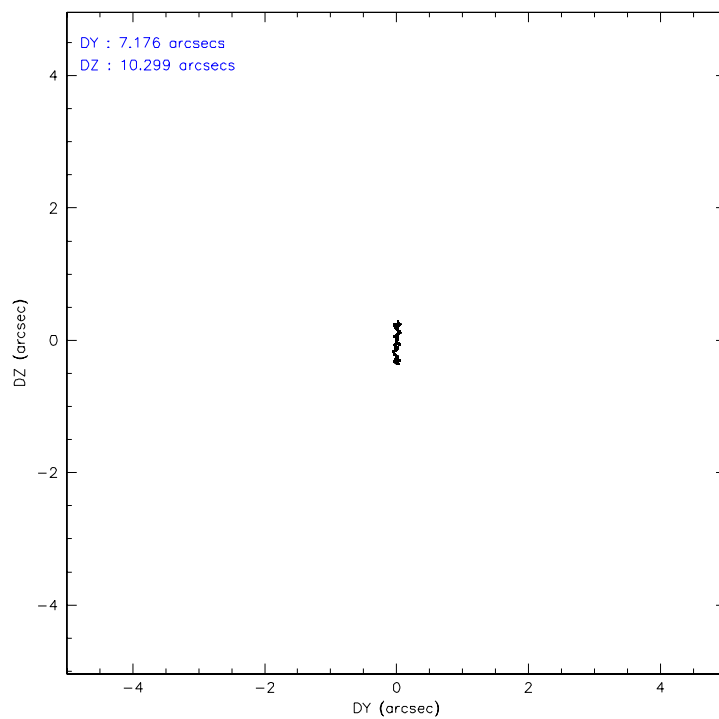
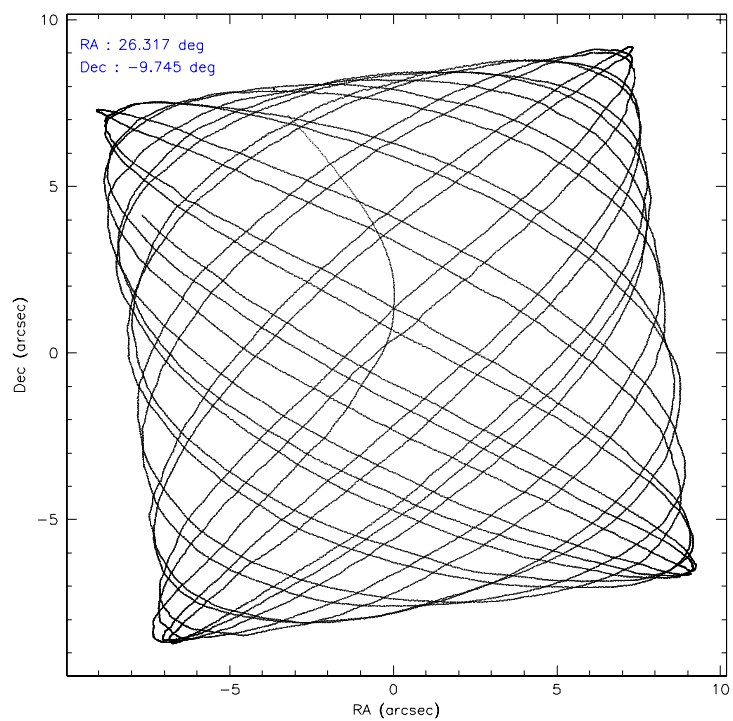
	ccd 1	ccd 2	ccd 3	ccd 6	ccd 7
level 1 events	53225	57419	56011	57867	74355
rejected events	46672	51145	49624	51488	46275
rejected %	87%	89%	88%	88%	62%

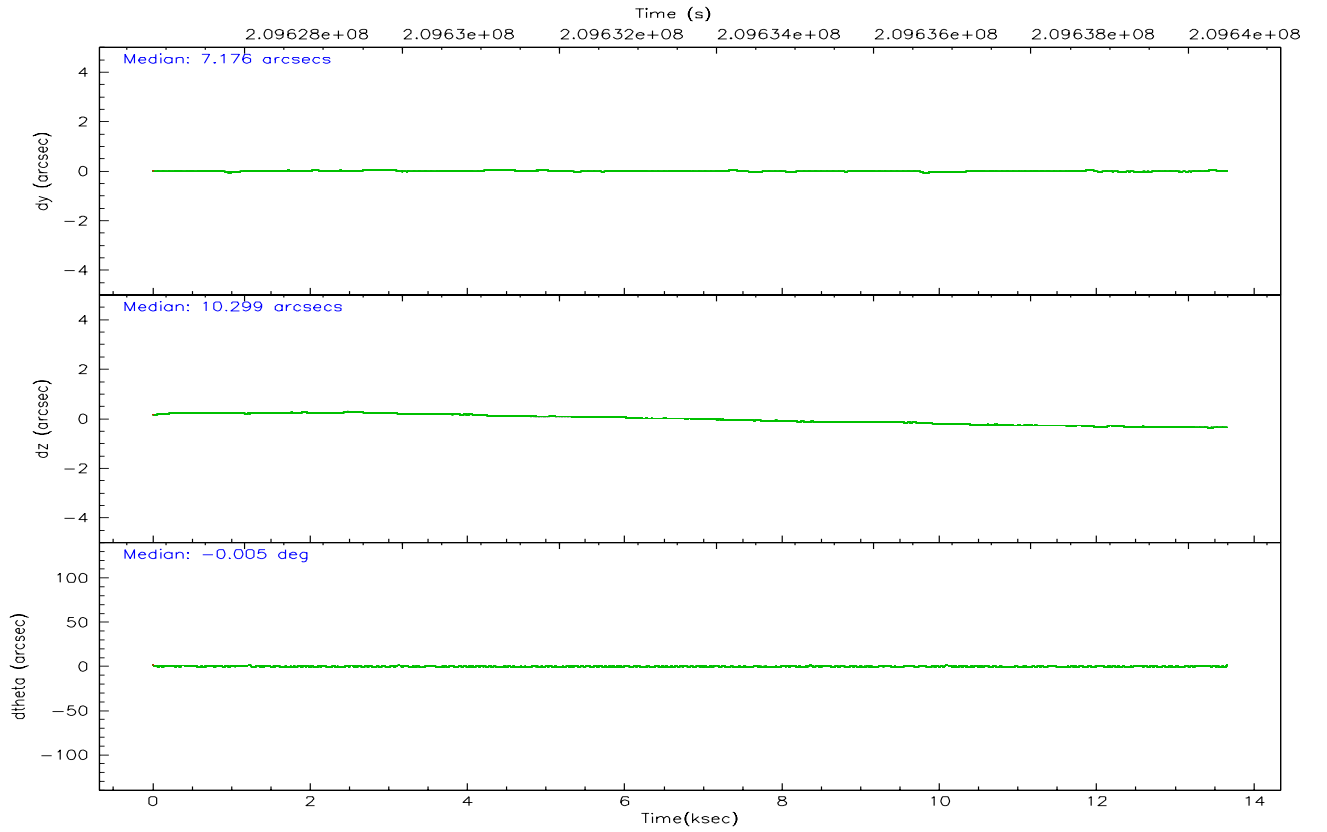
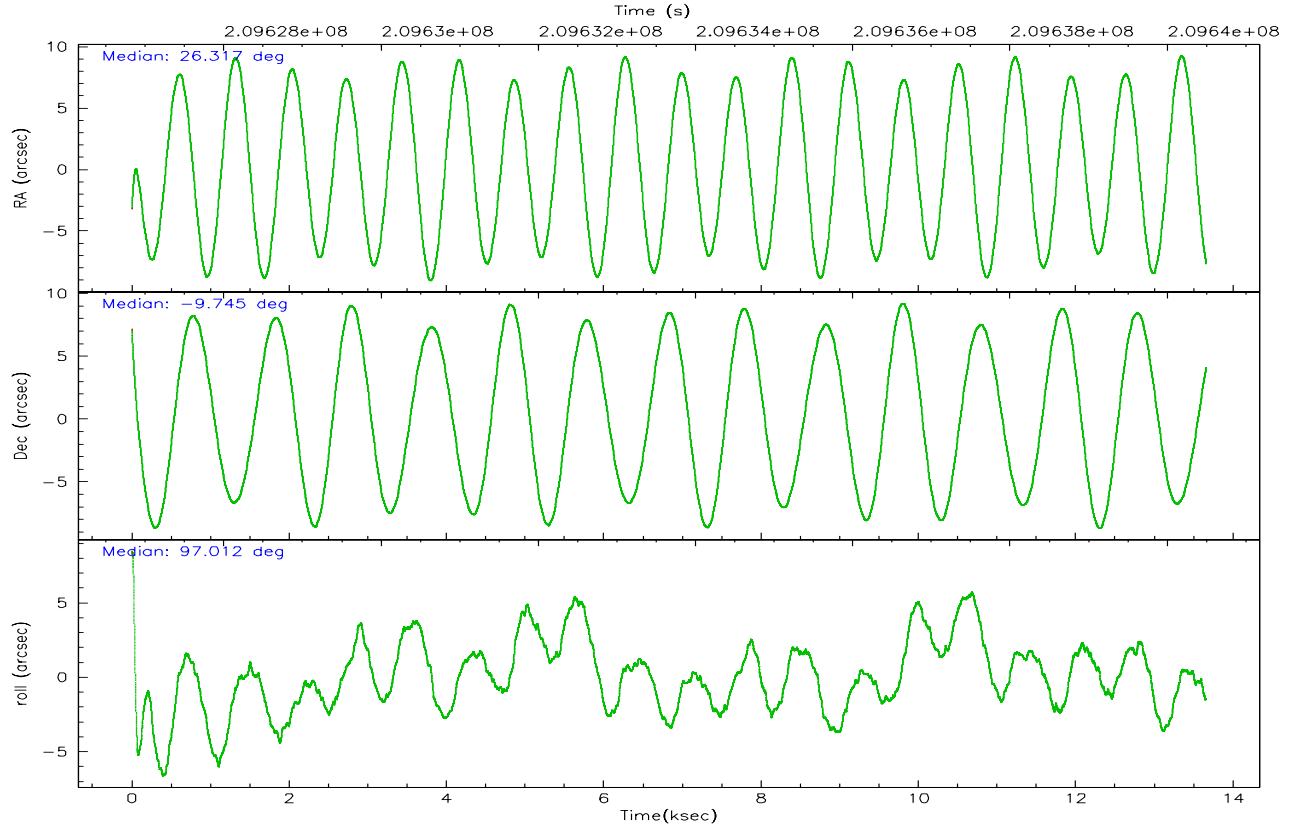
	ccd 1	ccd 2	ccd 3	ccd 6	ccd 7
grade 0 events	2600	2728	2733	2484	1953
	4%	4%	4%	4%	2%
grade 1 events	20	28	23	22	50
	0%	0%	0%	0%	0%
grade 2 events	1341	1219	1200	1307	7359
	2%	2%	2%	2%	9%
grade 3 events	809	745	789	808	1778
	1%	1%	1%	1%	2%
grade 4 events	792	743	791	769	1723
	1%	1%	1%	1%	2%
grade 5 events	2337	2054	2433	2622	5108
	4%	3%	4%	4%	6%
grade 6 events	1305	1104	1162	1313	16590
	2%	1%	2%	2%	22%
grade 7 events	44021	48798	46880	48542	39794
	82%	84%	83%	83%	53%

2.2 Compared Parameters

Parameter	Planned	Actual	Parameter	Planned	Actual
Instrument	ACIS	ACIS	Obspar format version number	6	6
Detector	ACIS-12367	ACIS-12367	Obspar file type	PREDICTED	ACTUAL
Grating	NONE	NONE	Obspar update status	NONE	UPDATED
Data mode	VFAINT	VFAINT	On-chip summing requested	N	N
Observation mode	POINTING	POINTING	Subarray requested	1/2	1/2
Pointing RA	26.334185	26.31723760280088	Subarray start row	0	257
Pointing Dec	-9.766524	-9.745069638083715	Subarray row count	1024	512
Pointing Roll	96.863466	97.01723988121682	Alternating exposures requested	N	N
SIM focus pos (mm)	-0.684267	-0.6828225247311905	Primary exposure time	0.000000	1.7
SIM defocus (mm)	0	0.001444936568705701			
SIM translation stage pos (mm)	-190.132523	-190.1400660498719			
SIM translation stage offset (mm)	0	0.00754346686406393			
Observation start time	209626993.184000	209625876.09328			
Observation start date	2004-08-23T05:42:09	2004-08-23T05:24:36			
Observation end time	209640493.184000	209642134.1315			
Observation end date	2004-08-23T09:27:09	2004-08-23T09:55:34			
Read mode	TIMED	TIMED			

2.3 Aspect



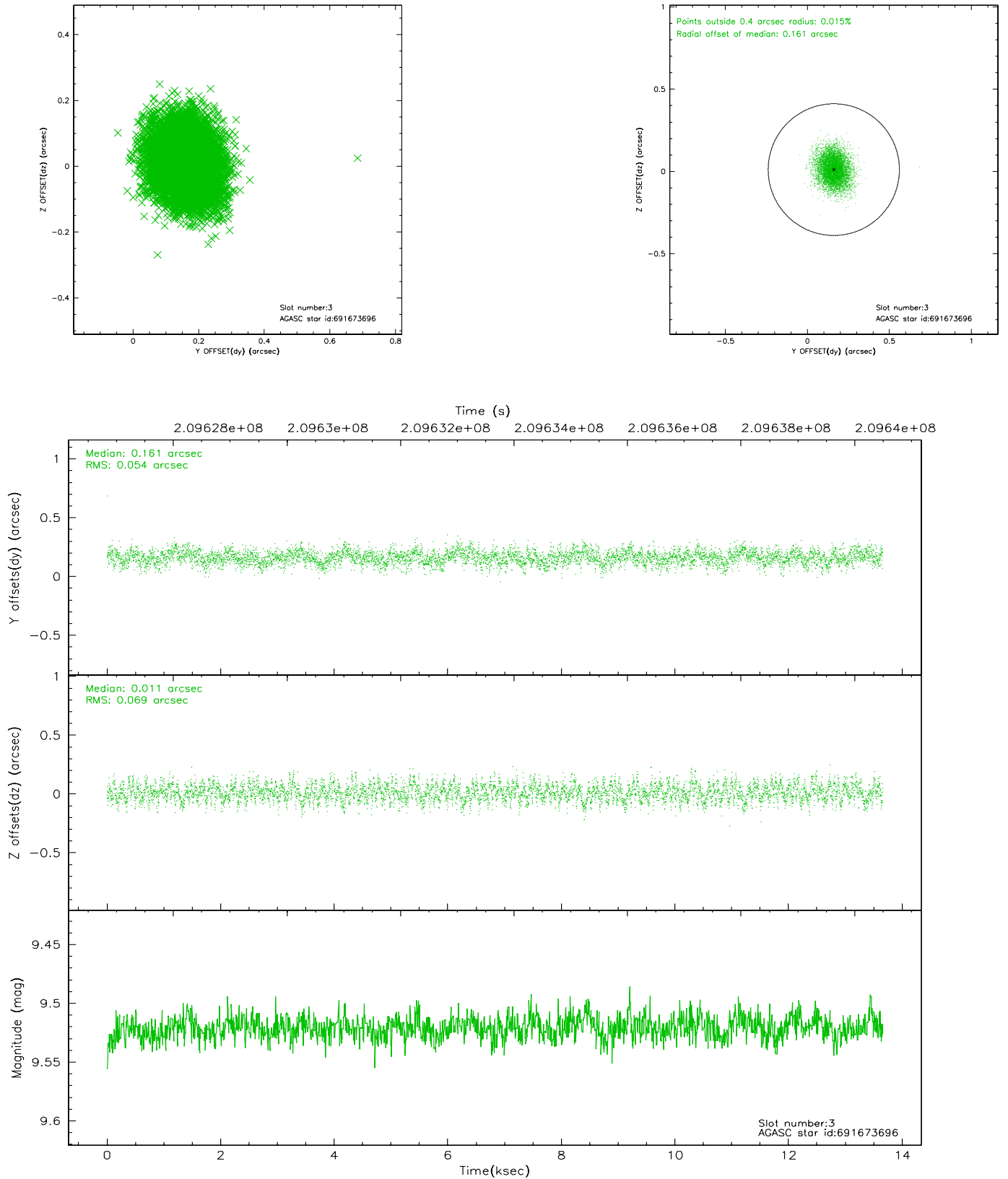


Slot Statistics

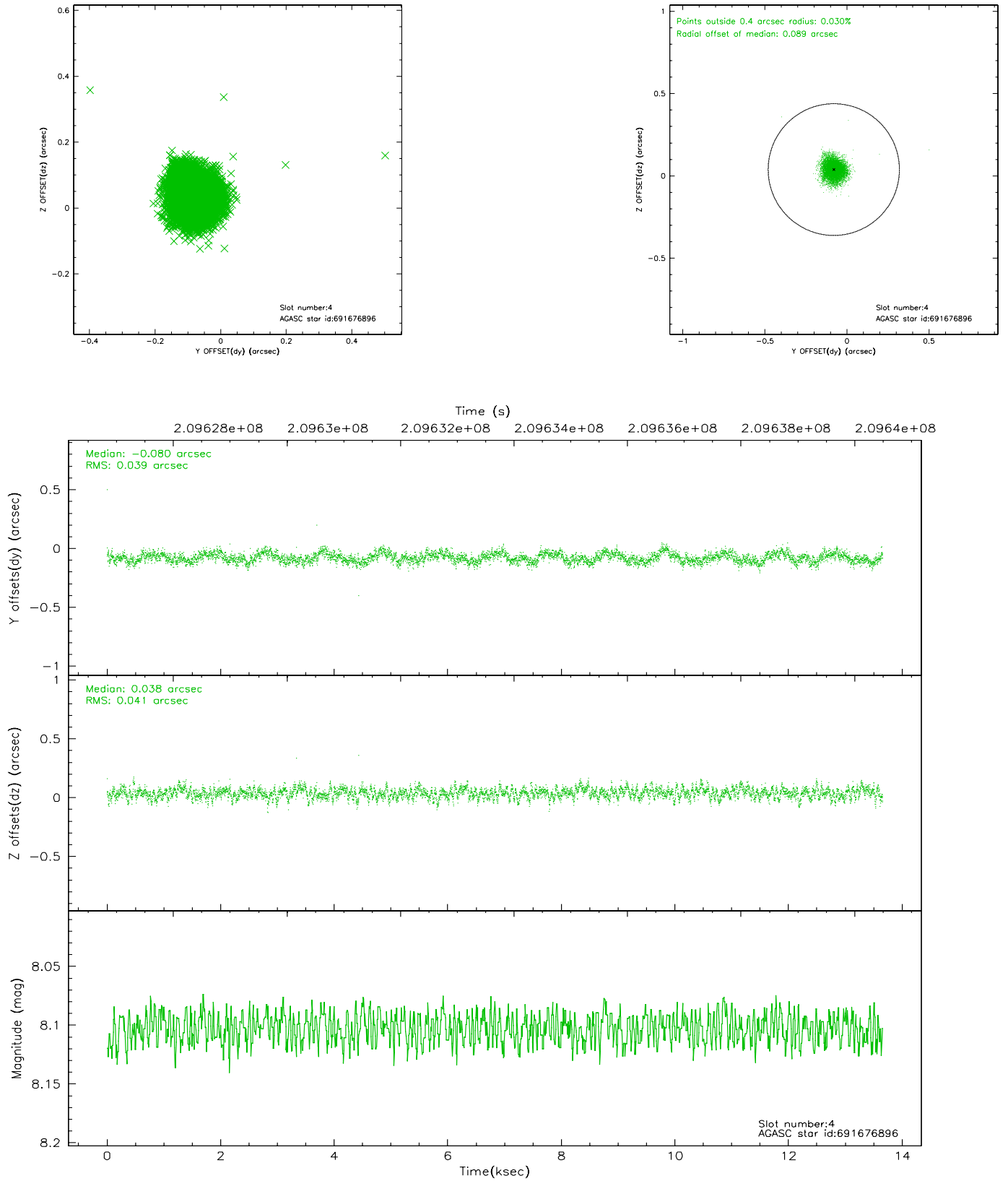
slot	status	id	mag	n_pts	med_dy	med_dz	dr1	dr2	ra	dec	mean_y	mean_z
0	FID	ACIS-S-2	7.10	3331	-0.034	-0.012	0.007	0.014	0.000000	0.000000	-759.94	-1731.56
1	FID	ACIS-S-4	7.21	3332	0.032	0.018	0.008	0.012	0.000000	0.000000	2153.22	176.64
2	FID	ACIS-S-6	7.34	3331	-0.026	0.001	0.008	0.013	0.000000	0.000000	402.46	814.39
3	GUIDE	691673696	9.52	6656	0.161	0.011	0.094	0.151	26.730303	-10.038309	-1139.24	-1277.13
4	GUIDE	691676896	8.10	6660	-0.080	0.038	0.060	0.096	26.776202	-9.599337	409.53	-1629.35
5	GUIDE	691801584	8.74	6659	-0.135	0.141	0.068	0.110	26.853827	-9.497860	739.04	-1947.10
6	GUIDE	691668096	9.30	6657	-0.094	-0.218	0.099	0.161	26.136153	-9.609789	644.58	630.30
7	GUIDE	691667008	10.05	6659	0.149	0.030	0.143	0.226	26.749958	-10.019309	-1079.47	-1354.32

2.4 Star Slots

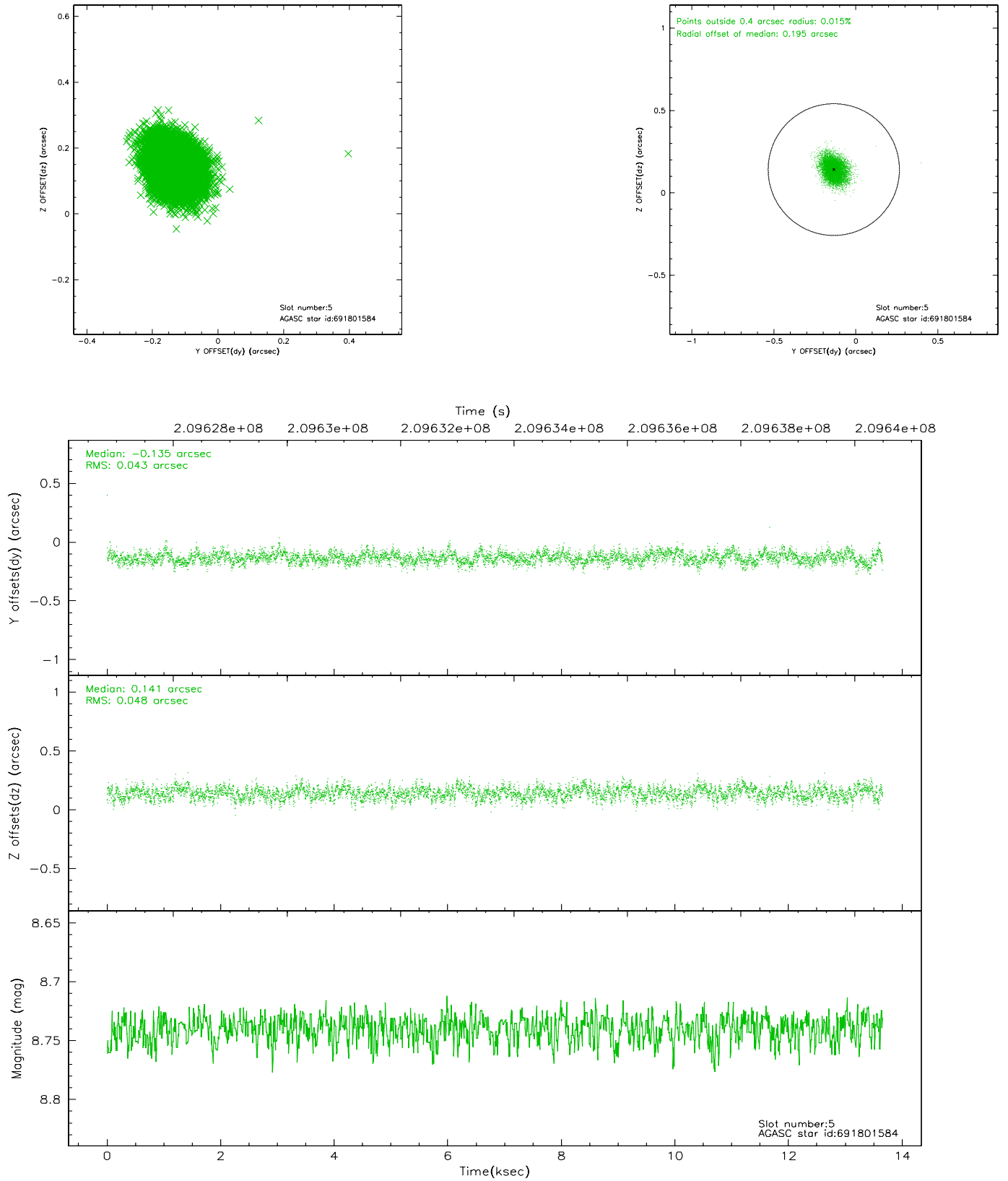
2.4.1 Slot 3



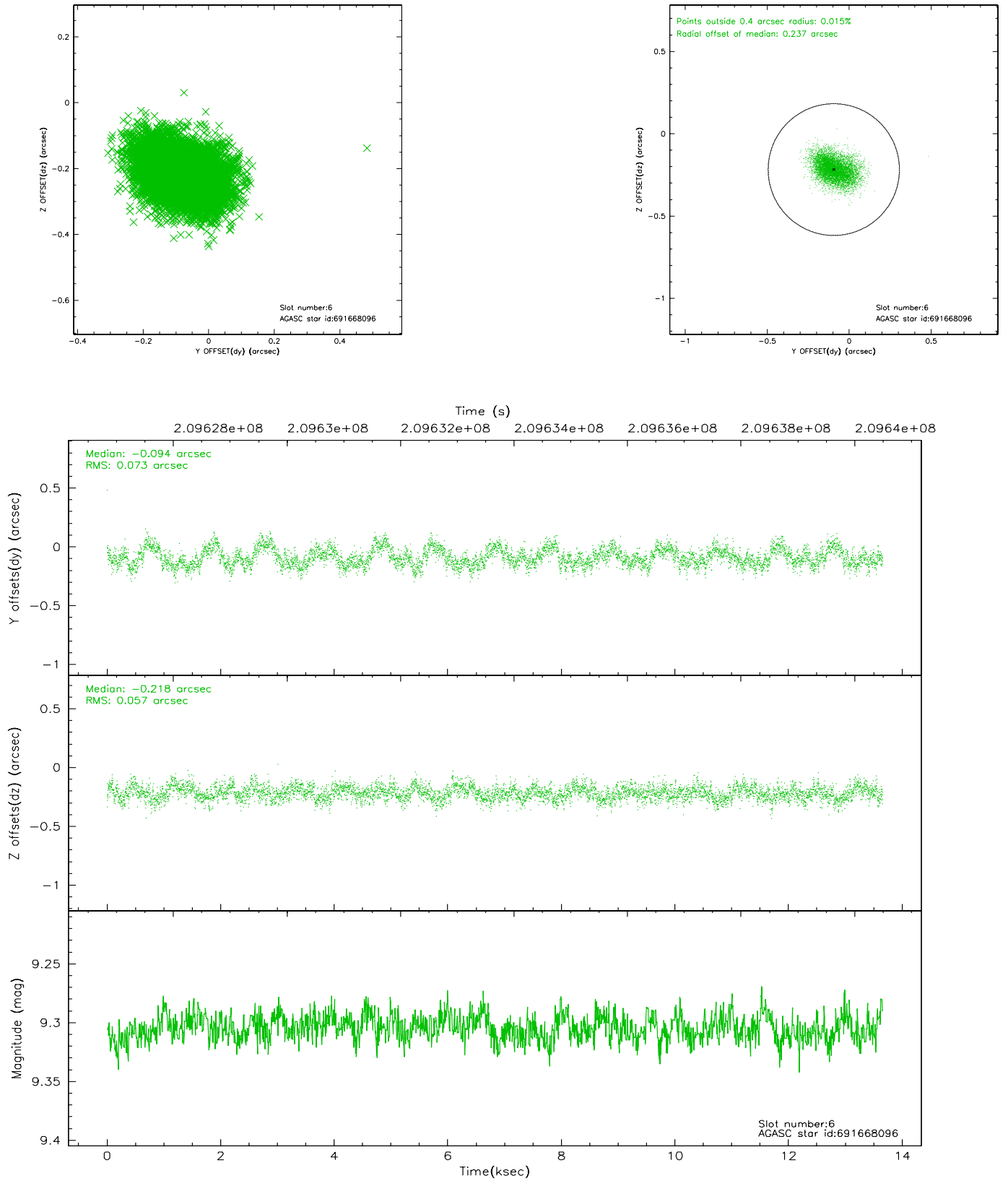
2.4.2 Slot 4



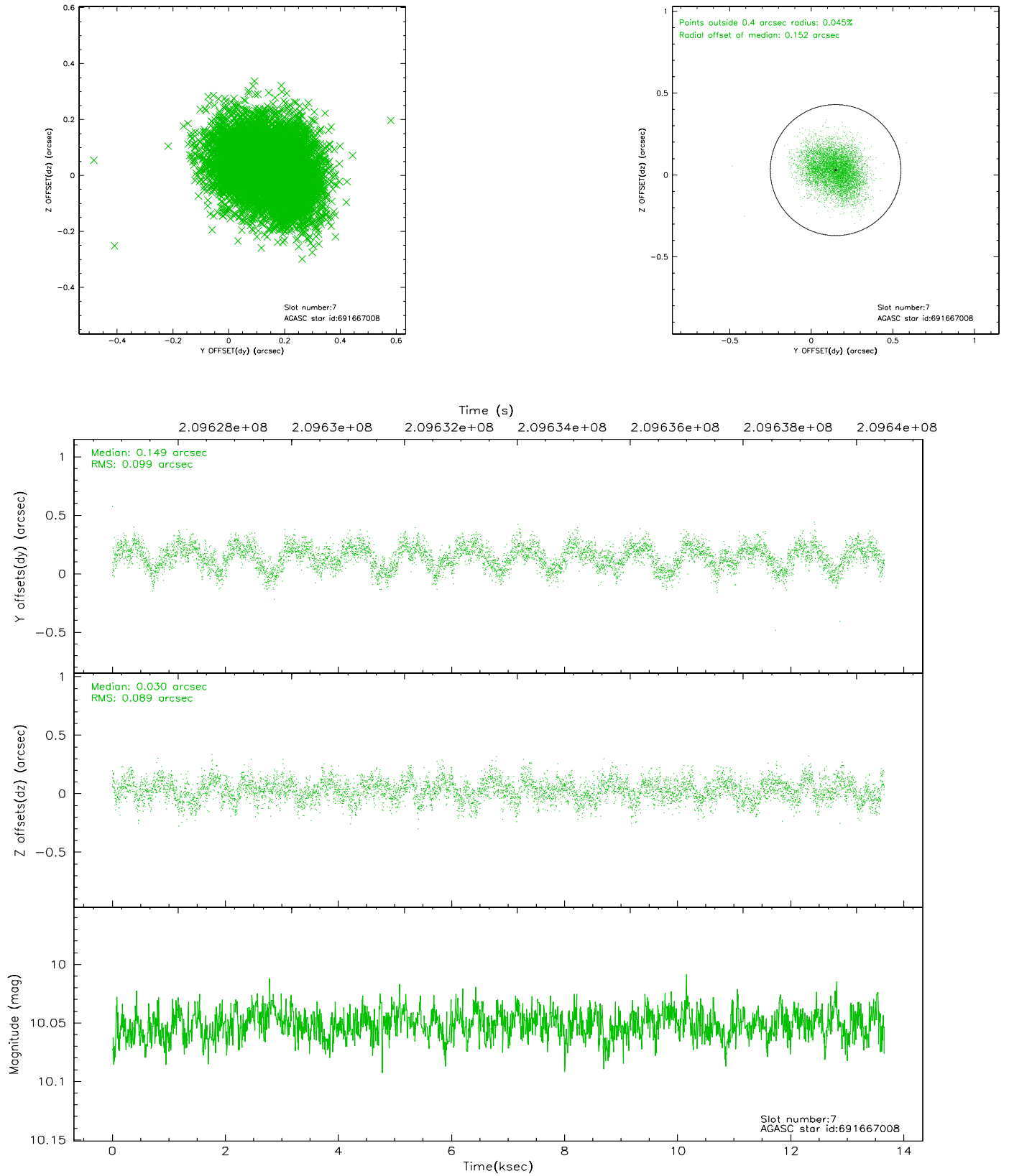
2.4.3 Slot 5



2.4.4 Slot 6

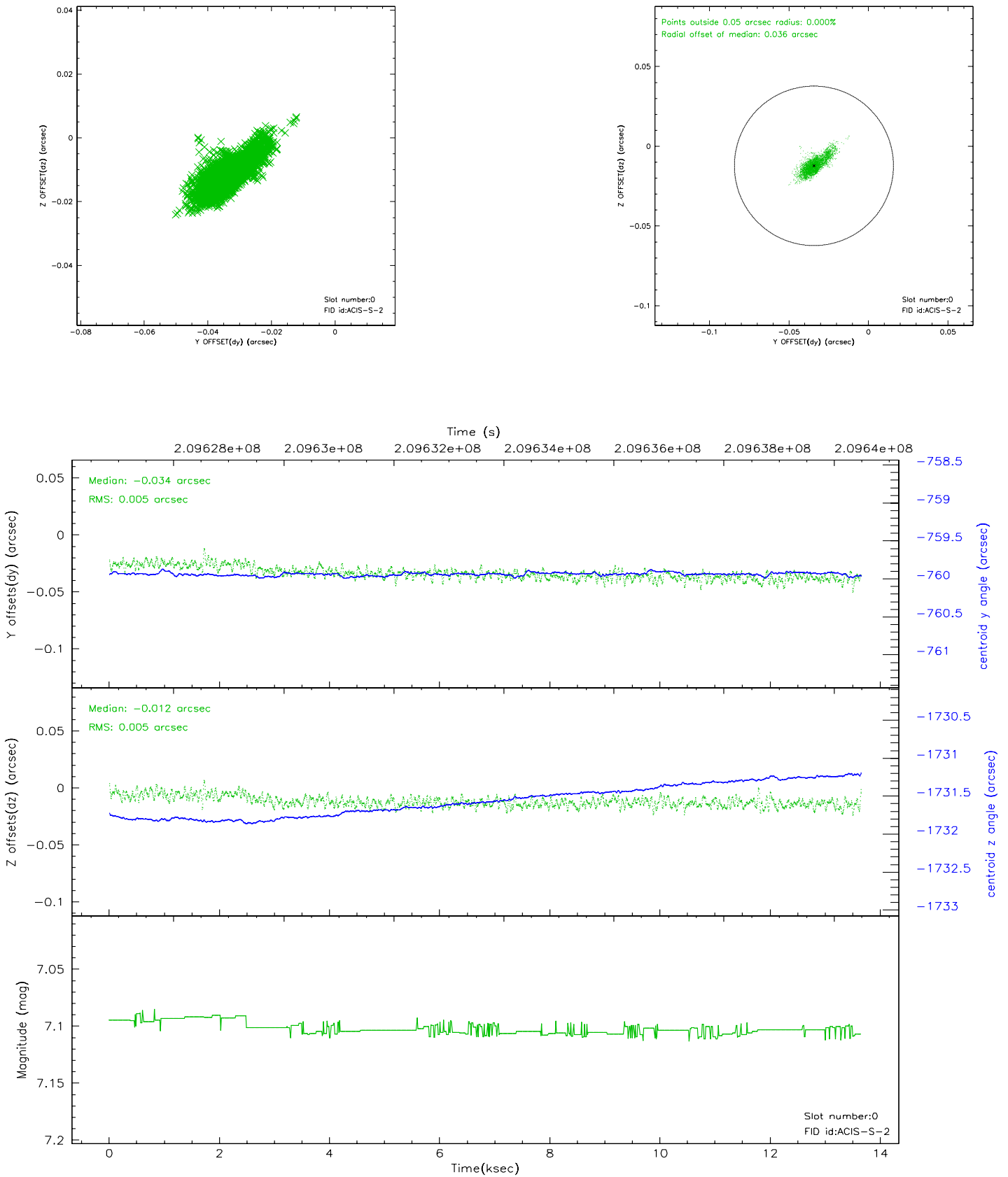


2.4.5 Slot 7

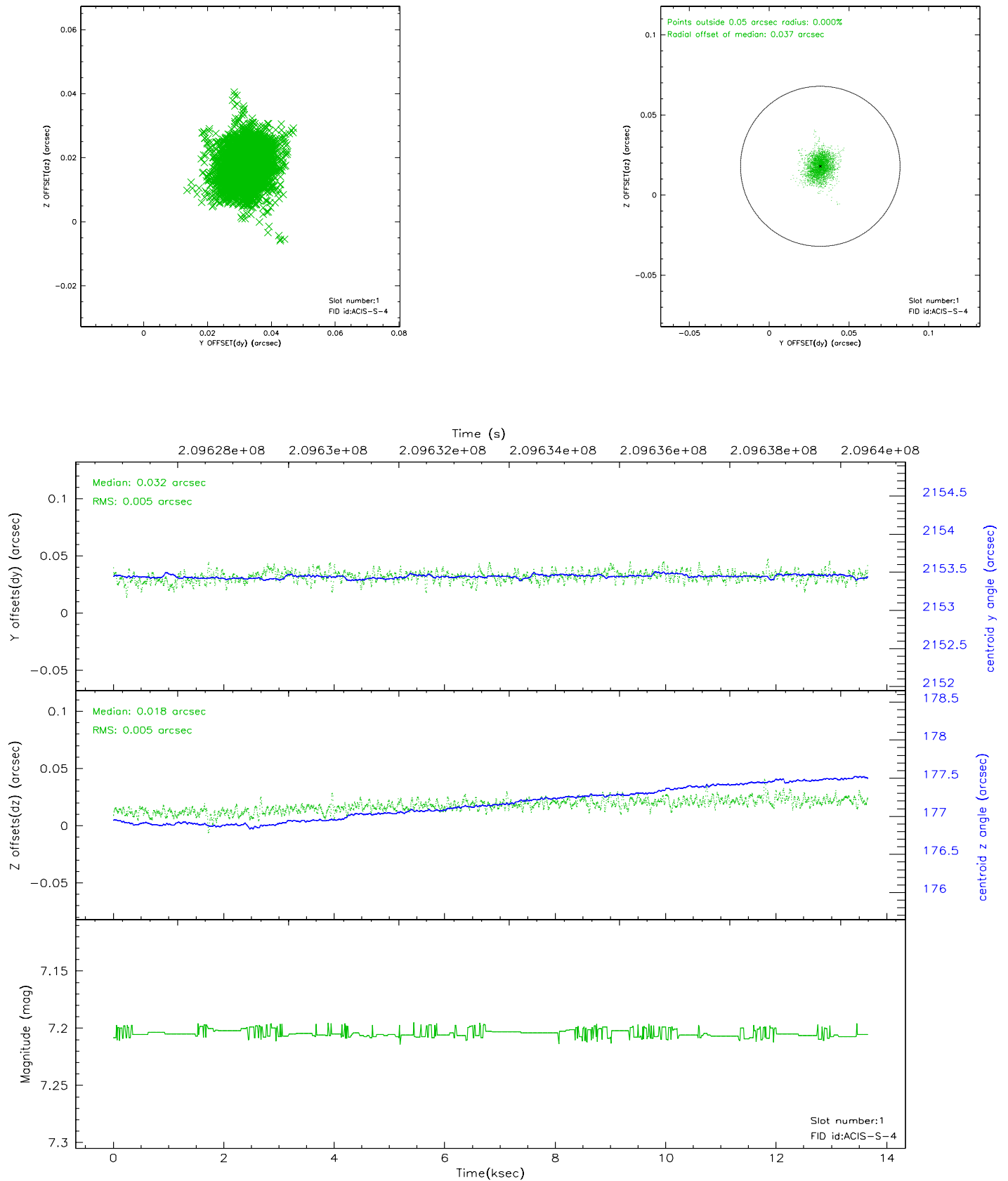


2.5 FID Slots

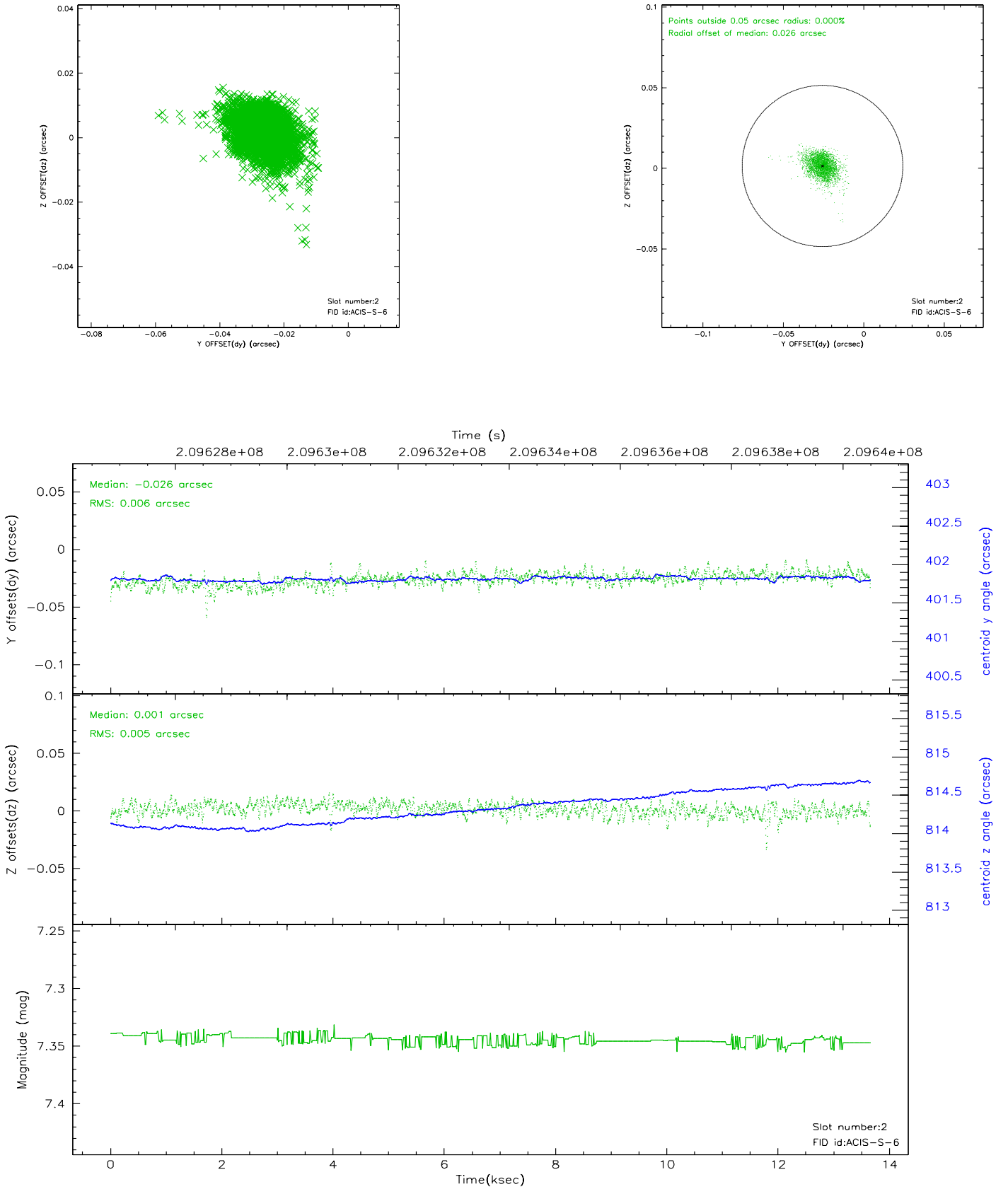
2.5.1 Slot 0



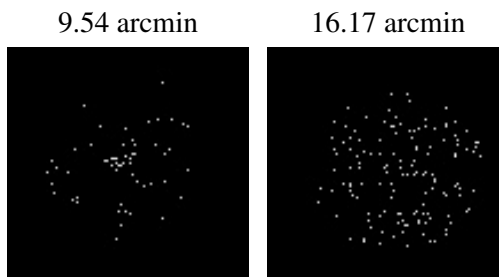
2.5.2 Slot 1



2.5.3 Slot 2



3 Point Sources



A Summary

A.1 Status

V&V Scientist	Beth Sundheim
V&V Date (YYYY-MM-DD)	2006.04.25
V&V Edition	1
V&V Disposition and Status	OK
V&V Charge Time	13.656

A.2 Comments