

# V&V Reference Report

## L2 ASCDS Version : 10.4.2.1

Observation 51582 - L2 Version 1  
Chandra X-Ray Center

L2 Processing Date : Oct 4 2015

## Contents

<b>1</b>	<b>Front</b>	<b>2</b>
<b>2</b>	<b>OBI</b>	<b>3</b>
2.1	OBI . . . . .	3
2.1.1	Images . . . . .	3
2.1.2	Bias . . . . .	3
2.1.3	Parameters . . . . .	4
2.1.4	Events . . . . .	4
2.2	Compared Parameters . . . . .	5
2.3	Star Slots . . . . .	6
2.4	FID Slots . . . . .	6
<b>A</b>	<b>Summary</b>	<b>7</b>
A.1	Status . . . . .	7
A.2	Comments . . . . .	7

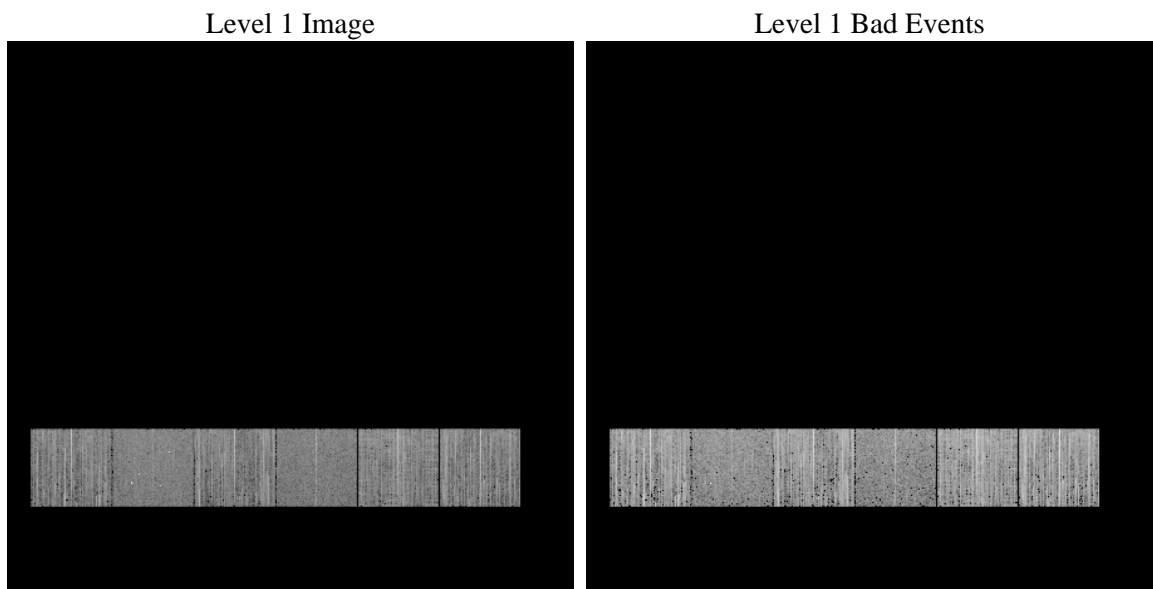
# 1 Front

seq_num	&#160	Sequence number
obs_id	51582	Observation id
title	ACIS-456789 diagnostics	Proposal title
observer	CHANDRA engineering request/realtime commanding	Principal investig
object	&#160	Source name
dtcycle	0	&#160
cycle	P	events from which exps? Prim/Second/Both
ra_targ	0.0	Observer's specified target RA [deg]
dec_targ	0.0	Observer's specified target Dec [deg]
ra_nom	30.696450381997	Nominal RA [deg]
dec_nom	-6.8713765271211	Nominal Dec [deg]
roll_nom	64.329797749105	Nominal Roll [deg]
revision	1	Processing version of data
ontime	3458.1791853905	Sum of GTIs [s]
livetime	3414.3896382795	Livetime [s]
ontime4	3458.287932992	Sum of GTIs [s]
ontime5	3458.3700129986	Sum of GTIs [s]
ontime6	3458.3289730549	Sum of GTIs [s]
ontime7	3458.1791853905	Sum of GTIs [s]
ontime8	3458.2468930483	Sum of GTIs [s]
ontime9	3458.1791853905	Sum of GTIs [s]
l2events	75004	Number of level 2 events

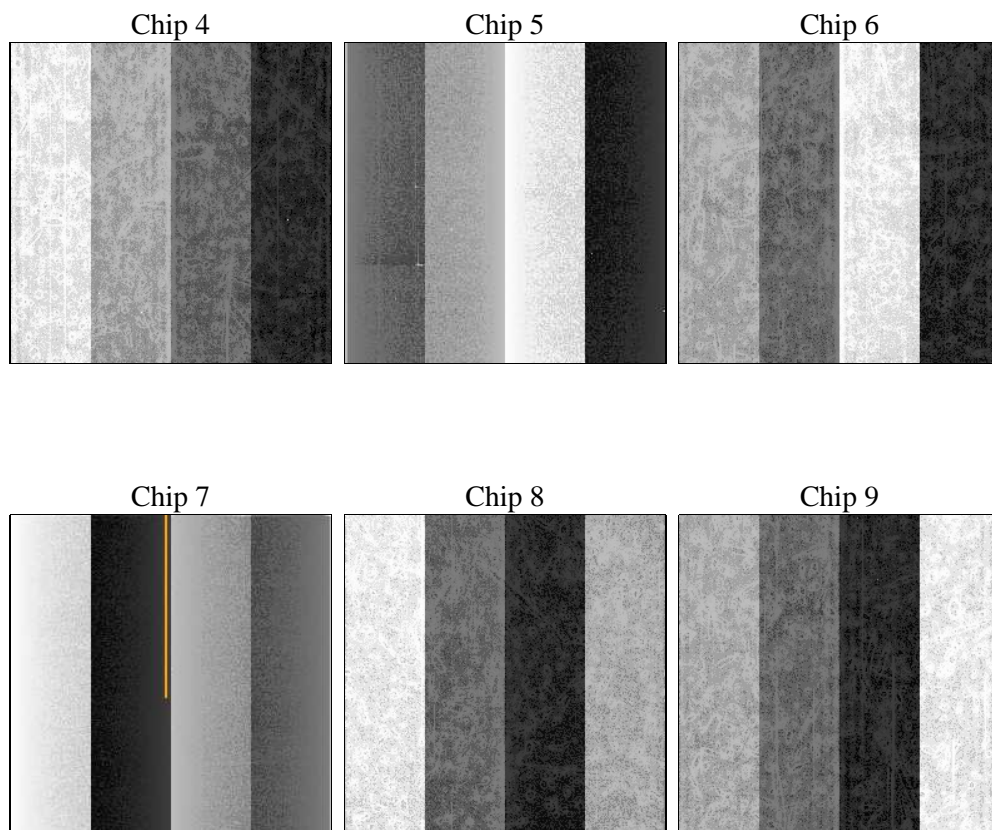
## 2 OBI

### 2.1 OBI

#### 2.1.1 Images



#### 2.1.2 Bias



### 2.1.3 Parameters

obi_num	0	Obi number	sched_exp_time	0.0	[s] Scheduled observation exposure time
ascdsver	10.4.2.1	Processing system revision	ontime	3458.1791853905	Sum of GTIs [s]
caldbver	4.6.10a	&#160	ontime4	3458.287932992	Sum of GTIs [s]
date	2015-10-04T05:33:06	Date and time of file creation	ontime5	3458.3700129986	Sum of GTIs [s]
revision	1	Processing version of data	ontime6	3458.3289730549	Sum of GTIs [s]
			ontime7	3458.1791853905	Sum of GTIs [s]
			ontime8	3458.2468930483	Sum of GTIs [s]
			ontime9	3458.1791853905	Sum of GTIs [s]
			l1events	368220	Number of level 1 events

### 2.1.4 Events

	ccd 4	ccd 5	ccd 6	ccd 7	ccd 8	ccd 9		ccd 4	ccd 5	ccd 6	ccd 7	ccd 8	ccd 9
level 1 events	61152	57045	62376	50078	69660	67909	grade 0 events	4604	3101	4236	2434	5435	4385
rejected events	52208	32658	53190	29732	56043	58696		7%	5%	6%	4%	7%	6%
rejected %	85%	57%	85%	59%	80%	86%	grade 1 events	39	53	37	37	28	28
								0%	0%	0%	0%	0%	0%
							grade 2 events	1784	8607	2026	5139	2978	1864
								2%	15%	3%	10%	4%	2%
							grade 3 events	619	812	639	1583	1121	683
								1%	1%	1%	3%	1%	1%
							grade 4 events	653	735	669	1495	1066	651
								1%	1%	1%	2%	1%	0%
							grade 5 events	1290	2629	1332	3319	1842	1468
								2%	4%	2%	6%	2%	2%
							grade 6 events	1293	11161	1628	9695	3024	1630
								2%	19%	2%	19%	4%	2%
							grade 7 events	50870	29947	51809	26376	54166	57200
								83%	52%	83%	52%	77%	84%

## 2.2 Compared Parameters

Parameter	Planned	Actual
Instrument	ACIS	ACIS
Detector	ACIS-456789	ACIS-456789
Grating	NONE	NONE
Data mode	FAINT	FAINT
Observation mode	SECONDARY	SECONDARY
[deg] Pointing RA	0	30.69645038199702
[deg] Pointing Dec	0	-6.871376527121134
[deg] Pointing Roll	0.0	64.32979774910537
[mm] SIM focus pos	-1.429586	-0.7809083437167272
[mm] SIM defocus	0.1037507710433287	0.7524282956875696
[mm] SIM translation stage pos	250.455976	250.466033080201
[mm] SIM translation stage offset	0	-0.01005468664627074
[s] Observation start time (MET)	560261050.8644249	560261049.83942
Observation start date	2015-10-03T12:04:11	2015-10-03T12:04:09
[s] Observation end time (MET)	560266231.214717	560266230.18972
Observation end date	2015-10-03T13:30:31	2015-10-03T13:30:30
Read mode	TIMED	TIMED

Parameter	Planned	Actual
Obspar format version number	7	7
Obspar file type	PREDICTED	ACTUAL
Obspar update status	NONE	UPDATED
Number of optional ACIS chips dropped	0	0
On-chip summing requested	N	N
Subarray requested	NONE	NONE
Alternating exposures requested	N	N
[s] Primary exposure time	3.2	3.2

## **2.3 Star Slots**

## **2.4 FID Slots**

## A Summary

### A.1 Status

V&V Scientist	Beth Sundheim
V&V Date (YYYY-MM-DD)	2015.10.04
V&V Edition	1
V&V Disposition and Status	OK
V&V Charge Time	3.4581791853905

### A.2 Comments