

V&V Reference Report

L2 ASCDS Version : 8.4.5

Observation 5082 - L2 Version 3
Chandra X-Ray Center

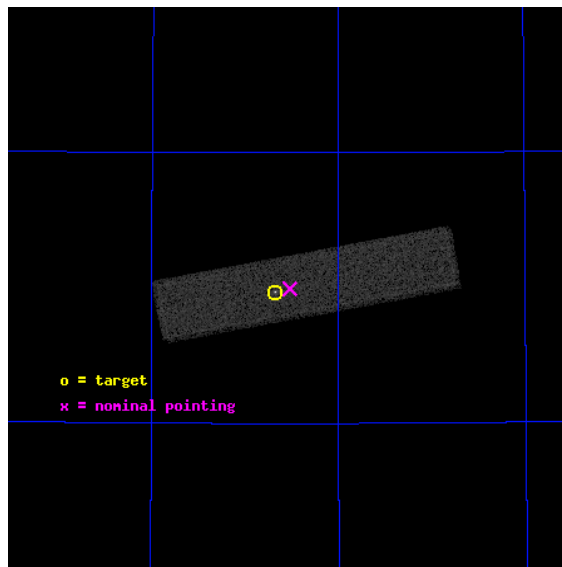
L2 Processing Date : Nov 11 2012

Contents

1	Front	2
2	OBI	3
2.1	OBI	3
2.1.1	Images	3
2.1.2	Parameters	4
2.1.3	Events	4
2.2	Compared Parameters	5
2.3	Aspect	6
2.4	Star Slots	9
2.4.1	Slot 3	9
2.4.2	Slot 4	10
2.4.3	Slot 5	11
2.4.4	Slot 6	12
2.4.5	Slot 7	13
2.5	FID Slots	14
2.5.1	Slot 0	14
2.5.2	Slot 1	15
2.5.3	Slot 2	16
A	Summary	17
A.1	Status	17
A.2	Comments	17

1 Front

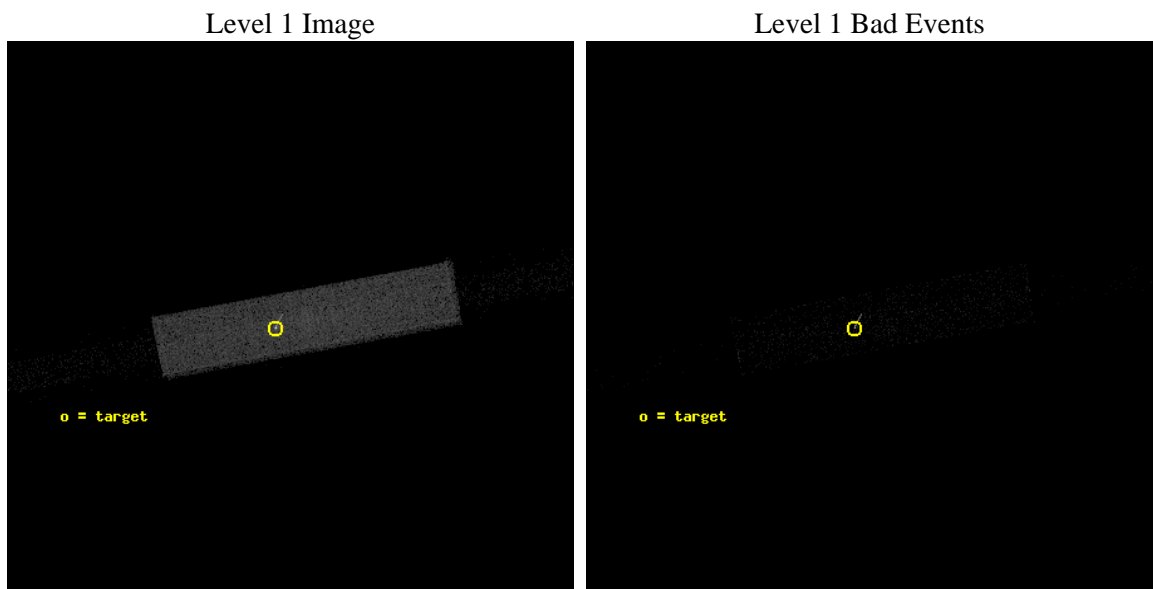
seq_num	290355	Sequence number
obs_id	5082	Observation id
title	AO5A Calibration Observations to Monitor the Spatial Variations in the HRC-S Gain	Proposal title
observer	Dr. CXC Calibration	Principal investigator
object	ArLac	Source name
ra_targ	332.17	Observer's specified target RA [deg]
dec_targ	45.742306	Observer's specified target Dec [deg]
ra_nom	332.13012224213	Nominal RA [deg]
dec_nom	45.748383775918	Nominal Dec [deg]
roll_nom	349.47534412797	Nominal Roll [deg]
revision	3	Processing version of data
ontime	1088.8062976301	[s]
livetime	1082.9537133124	Ontime multiplied by DTCOR
l2events	41122	Number of level 2 events



2 OBI

2.1 OBI

2.1.1 Images



2.1.2 Parameters

obi_num	0	Obi number	sched_exp_time	946.000000	[s] Scheduled observation exposure time
ascdsver	8.4.5	Processing system revision	ontime	1088.8062976301	[s]
caldsver	4.5.2	 	l1events	68373	Number of level 1 events
date	2012-11-11T14:40:29	Date and time of file creation			
revision	3	Processing version of data			

2.1.3 Events

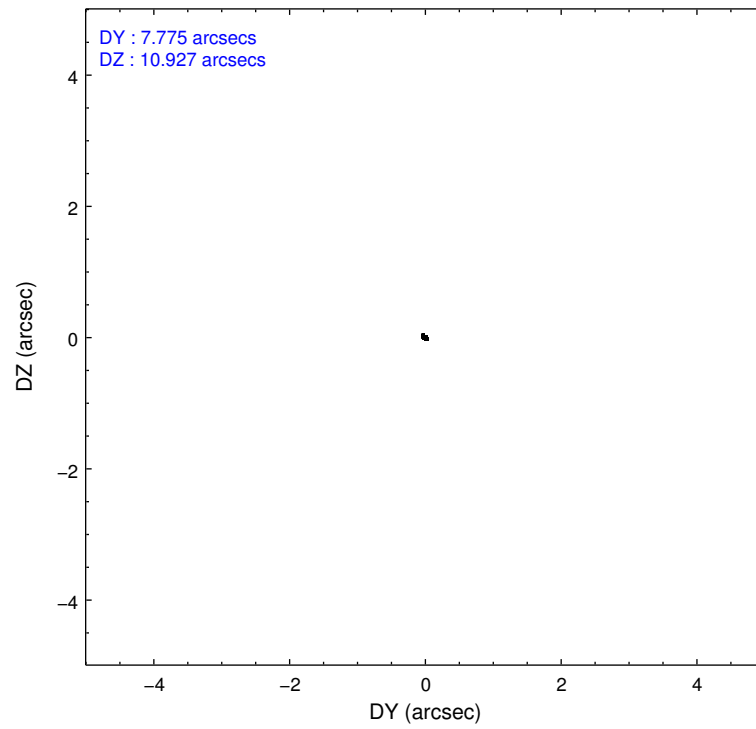
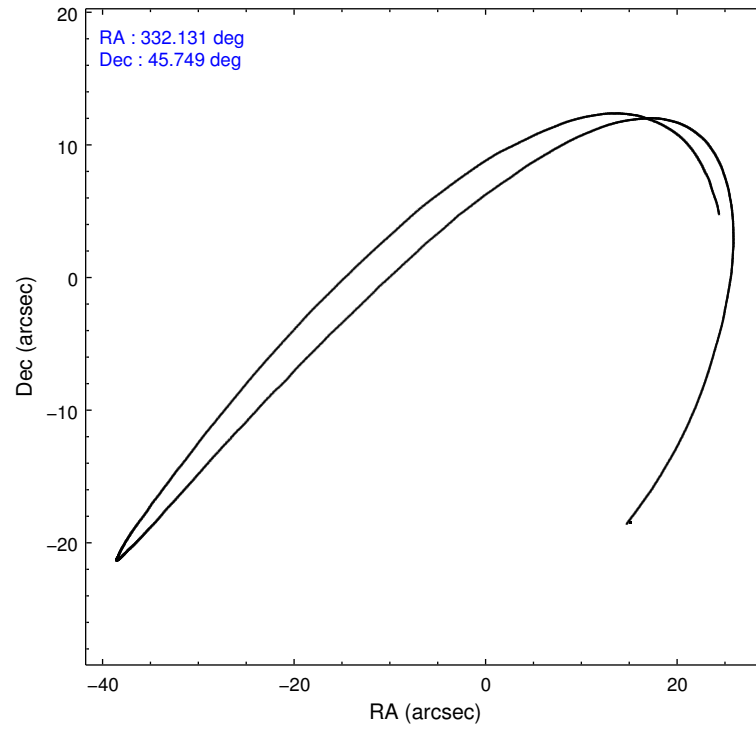
Level 1 Events

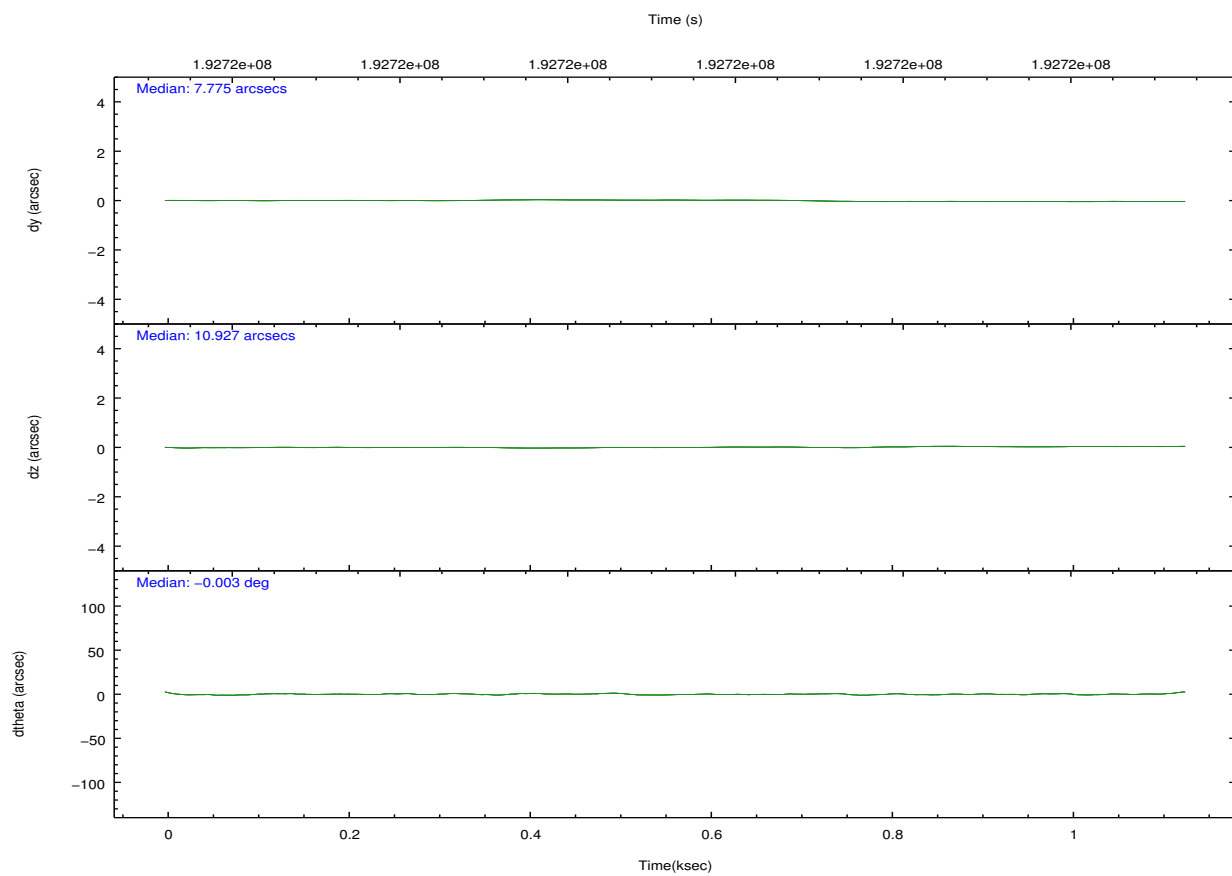
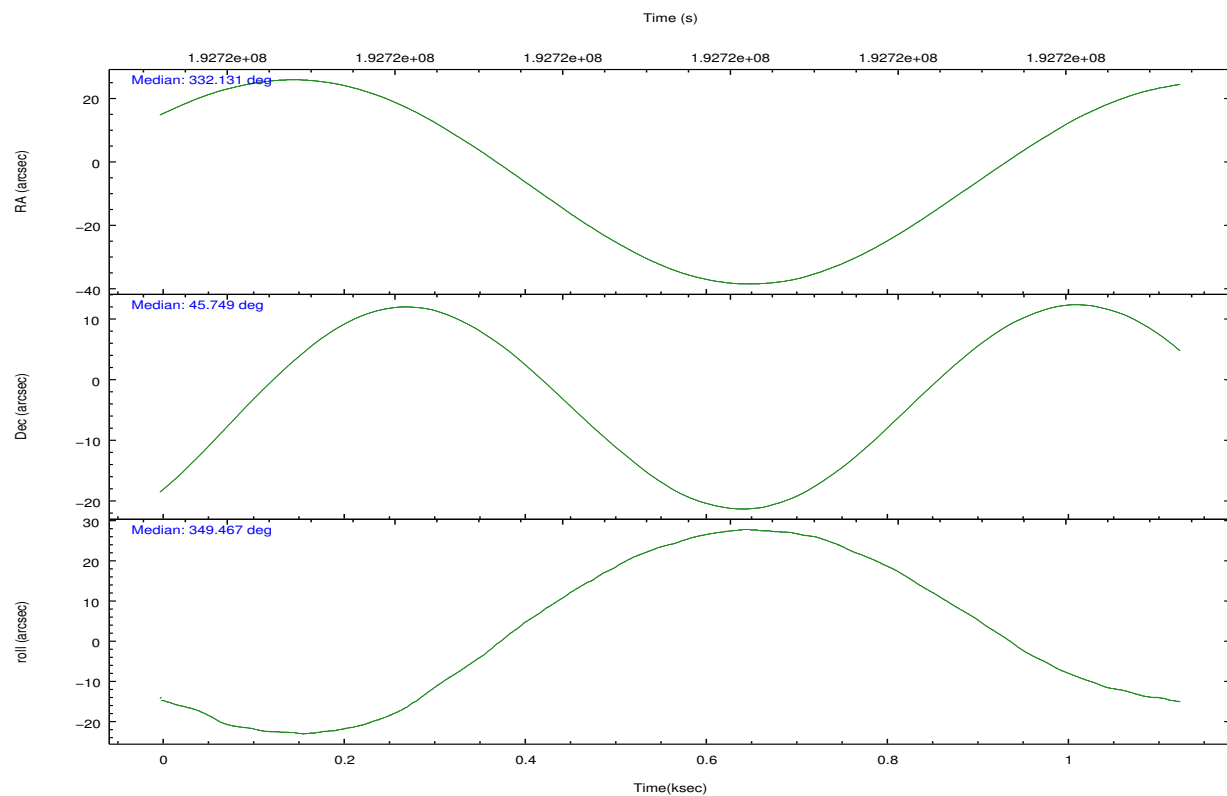
	segment 1	segment 2	segment 3
level 1 events	1148	66119	1106
rejected events	1148	15659	1106
rejected %	100%	23%	100%

2.2 Compared Parameters

Parameter	Planned	Actual	Parameter	Planned	Actual
Instrument	HRC	HRC	Obspar format version number	7	7
Detector	HRC-S	HRC-S	Obspar file type	PREDICTED	ACTUAL
Grating	NONE	NONE	Obspar update status	NONE	UPDATED
Data mode	OBSERVING	OBSERVING			
Observation mode	POINTING	POINTING			
[deg] Pointing RA	332.091689	332.1301222421284			
[deg] Pointing Dec	45.736588	45.7483837759175			
[deg] Pointing Roll	349.435596	349.4753441279669			
[mm] SIM focus pos	-1.429586	-1.428180813131781			
[mm] SIM defocus	0.1037507710433287	0.1051558262725154			
[mm] SIM translation stage pos	250.455976	250.466033080201			
[mm] SIM translation stage offset	0	-0.01005468664627074			
[s] Observation start time (MET)	192721345.184000	192720968.54706			
Observation start date	2004-02-09T13:41:21	2004-02-09T13:36:08			
[s] Observation end time (MET)	192722291.184000	192722425.07213			
Observation end date	2004-02-09T13:57:07	2004-02-09T14:00:25			

2.3 Aspect



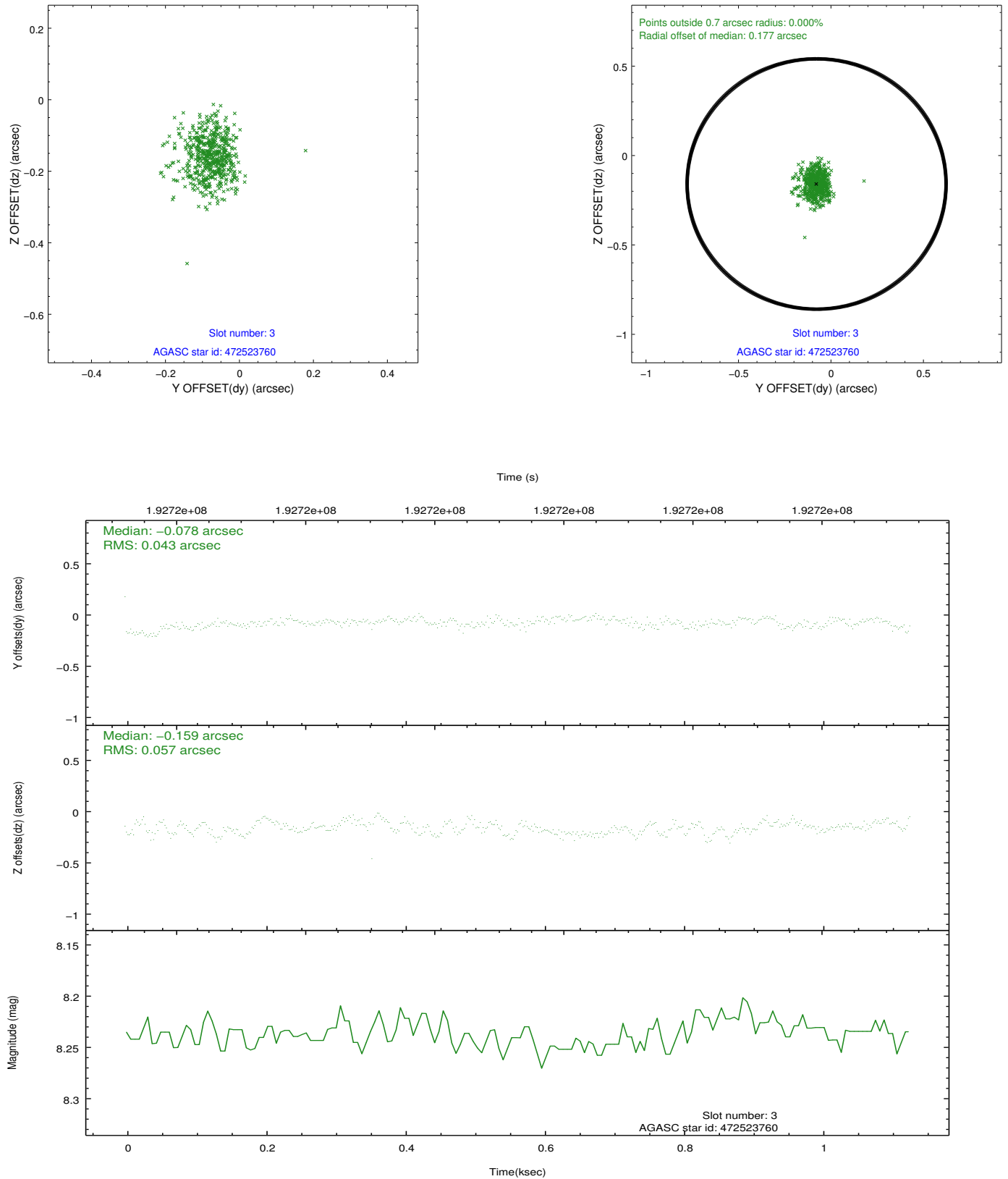


Slot Statistics

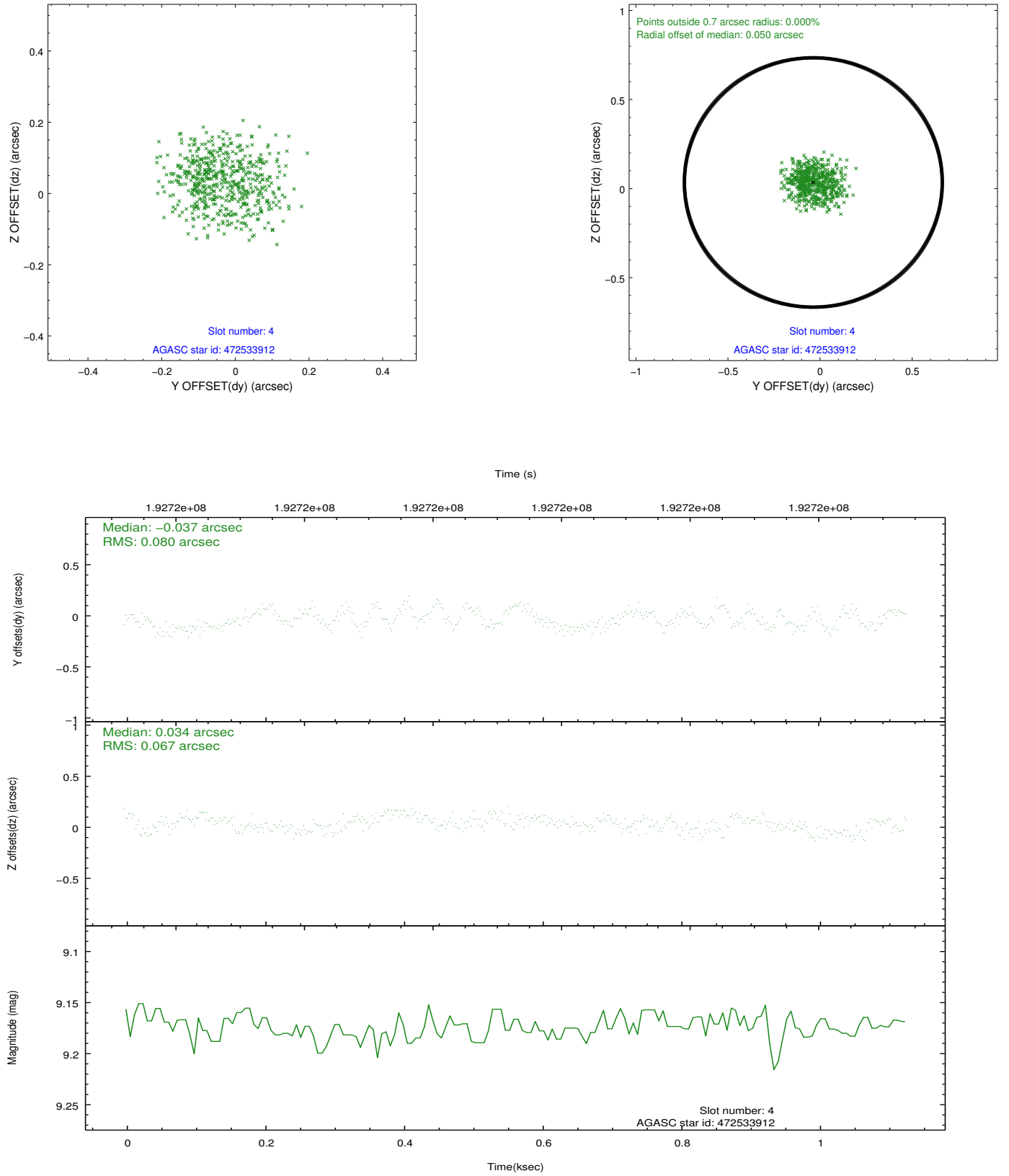
slot	status	id	mag	n_pts	med_dy	med_dz	dr1	dr2	ra	dec	mean_y	mean_z
0	FID	HRC-S-1	7.05	275	0.142	-0.175	0.008	0.014	0.000000	0.000000	-1161.92	-459.65
1	FID	HRC-S-2	7.04	275	0.144	-0.111	0.009	0.015	0.000000	0.000000	1233.53	-453.92
2	FID	HRC-S-3	7.05	275	0.106	-0.017	0.008	0.015	0.000000	0.000000	-1160.19	568.38
3	GUIDE	472523760	8.24	551	-0.078	-0.159	0.075	0.123	331.645363	45.403260	-889.93	-1387.09
4	GUIDE	472533912	9.17	551	-0.037	0.034	0.114	0.175	331.791136	46.368695	-1153.83	2095.51
5	GUIDE	472654568	9.43	551	-0.033	-0.014	0.118	0.193	332.194449	45.063576	698.86	-2333.20
6	GUIDE	472655152	9.42	550	0.091	0.043	0.098	0.202	332.504239	45.862991	933.72	632.09
7	GUIDE	472659832	9.46	550	0.047	0.087	0.104	0.158	332.780399	46.098139	1451.26	1600.14

2.4 Star Slots

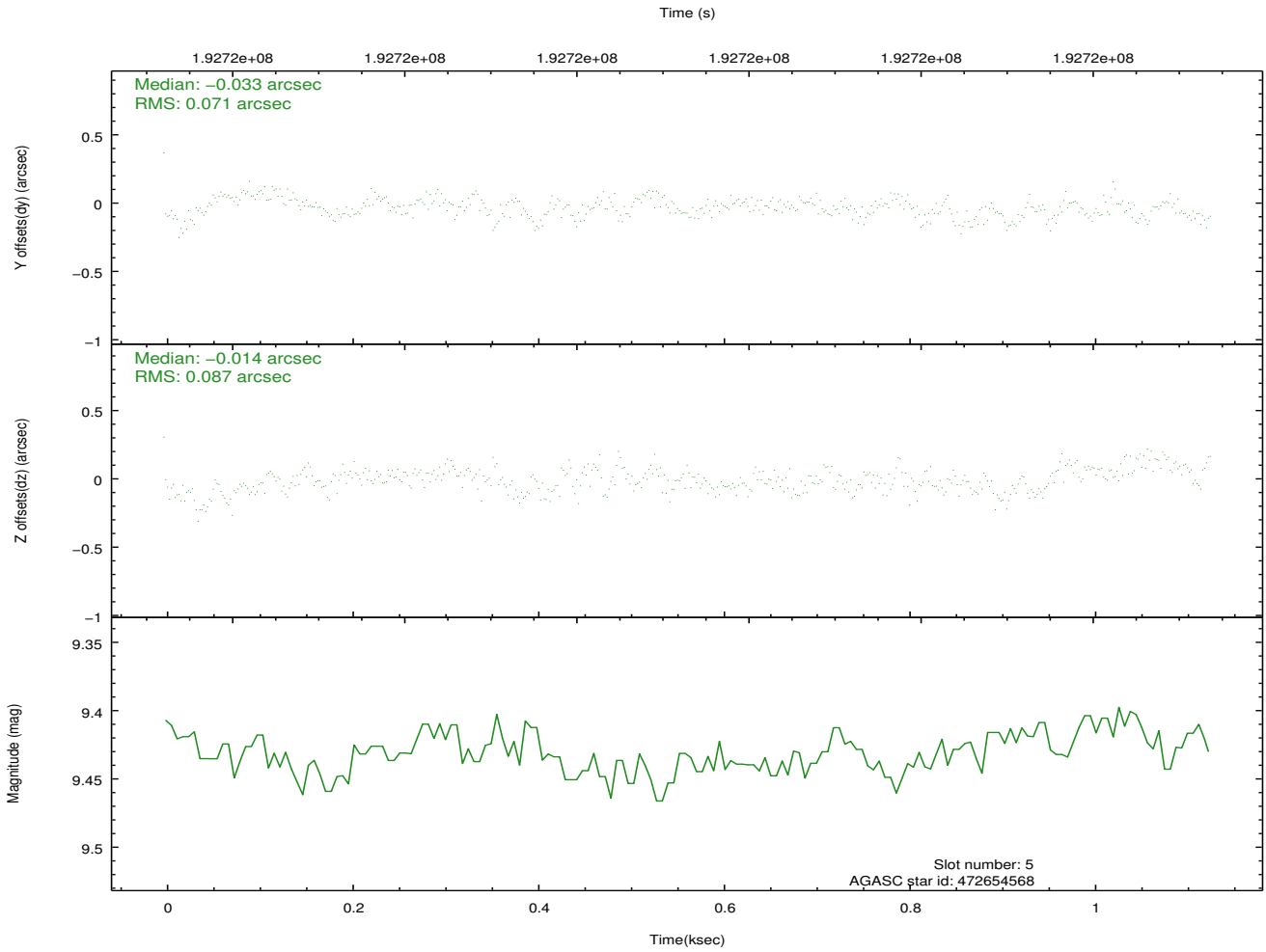
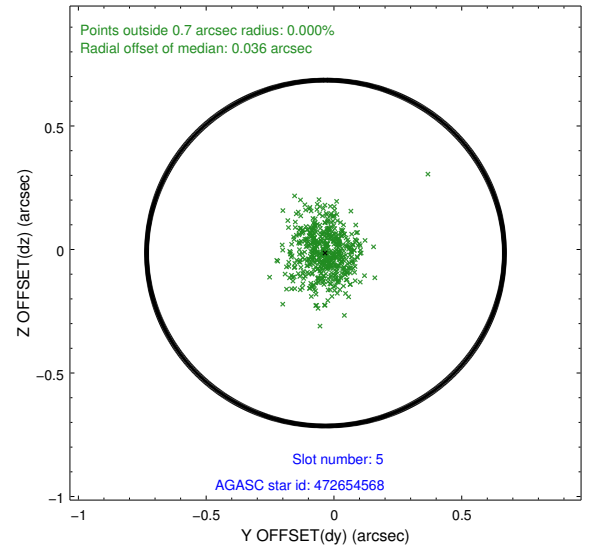
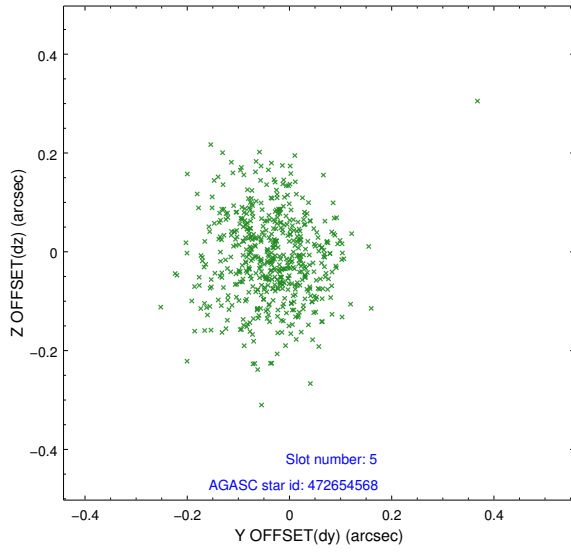
2.4.1 Slot 3



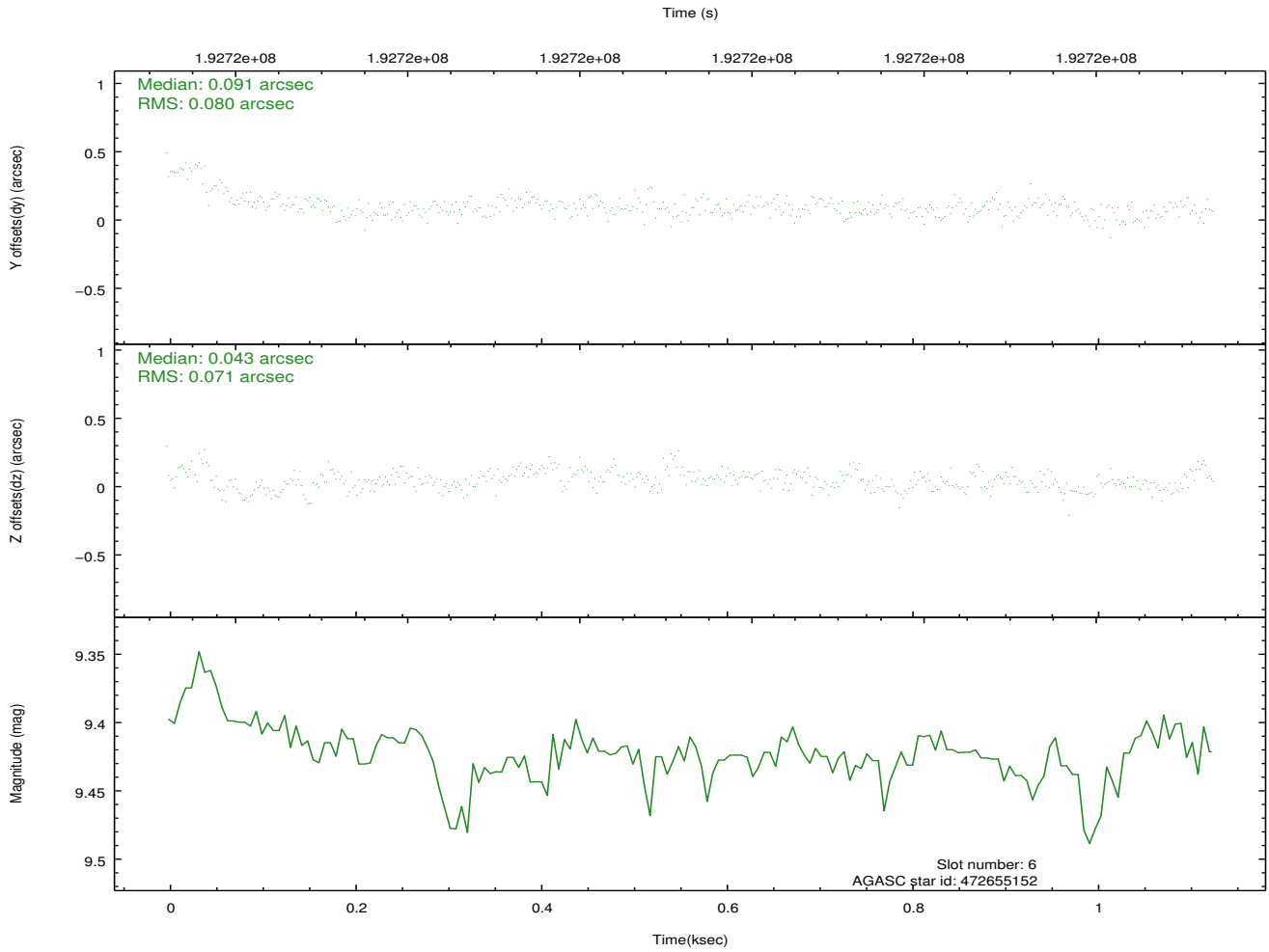
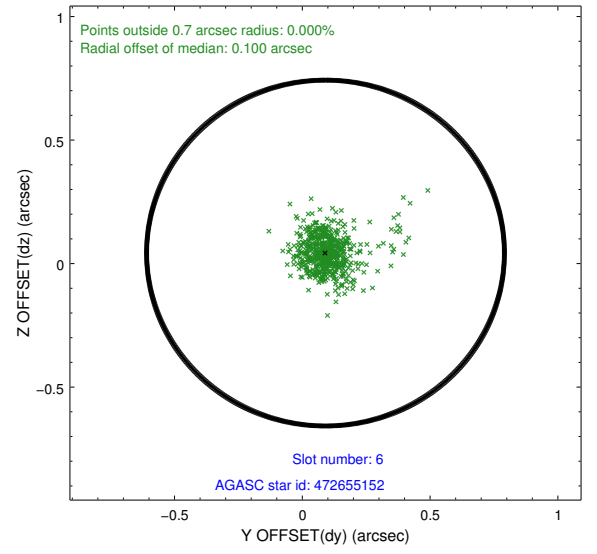
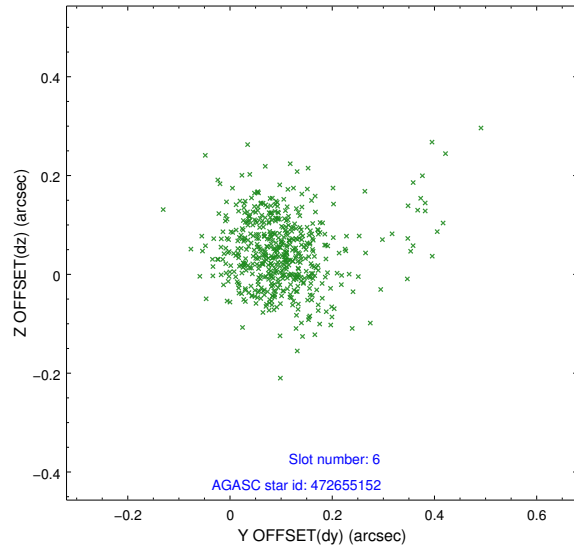
2.4.2 Slot 4



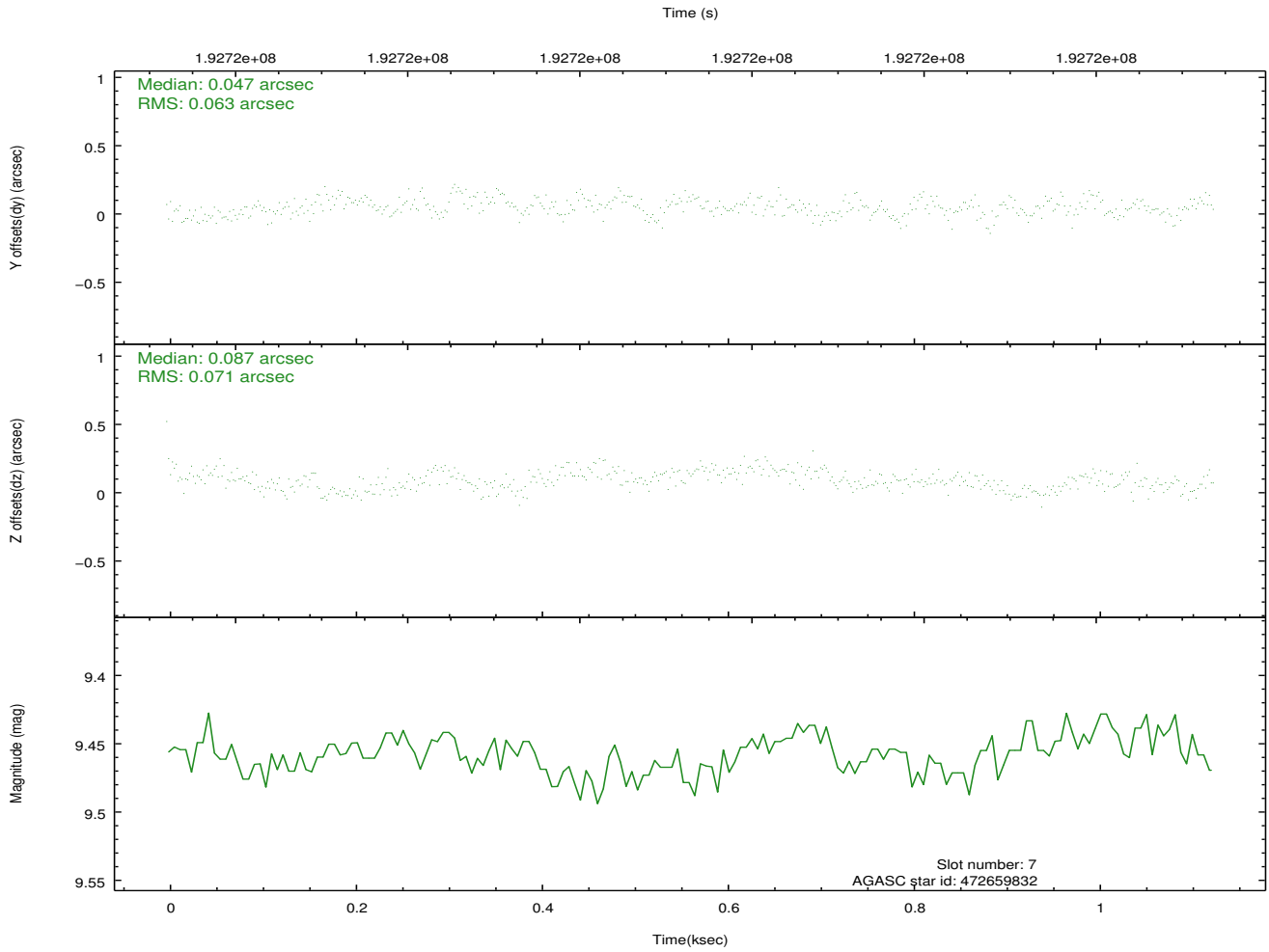
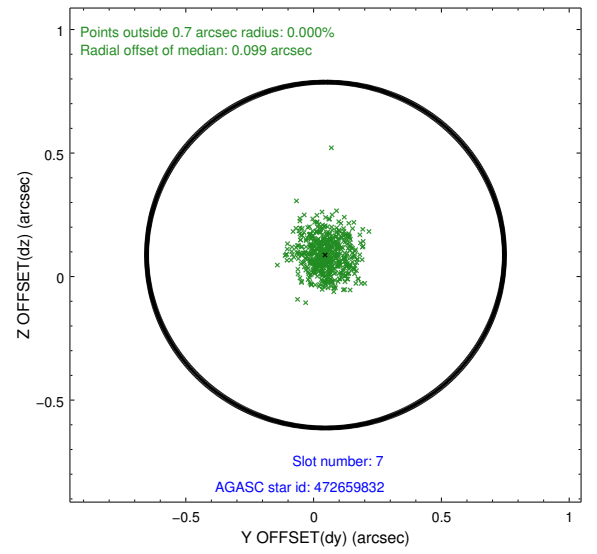
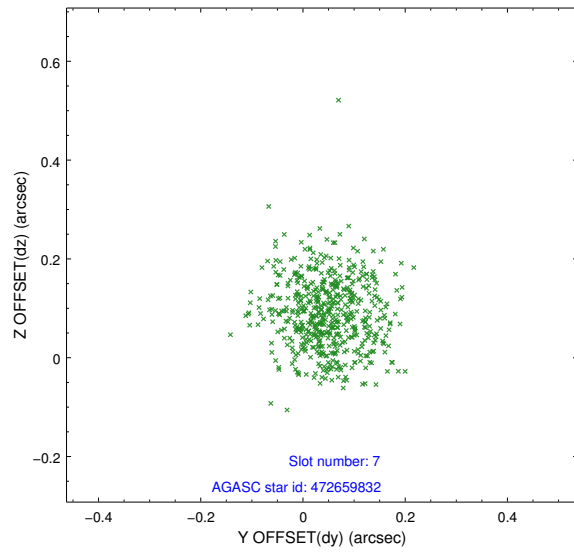
2.4.3 Slot 5



2.4.4 Slot 6

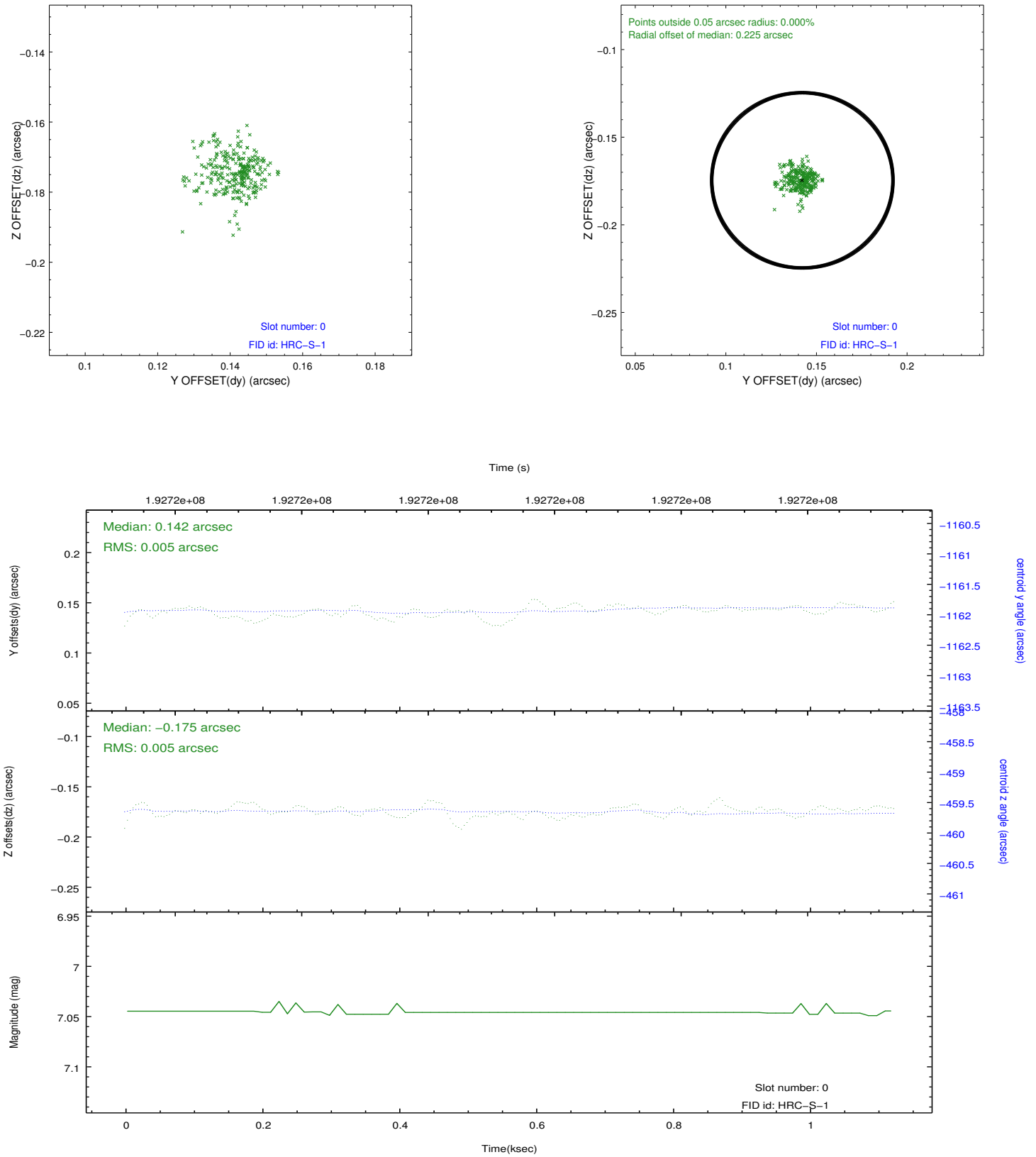


2.4.5 Slot 7

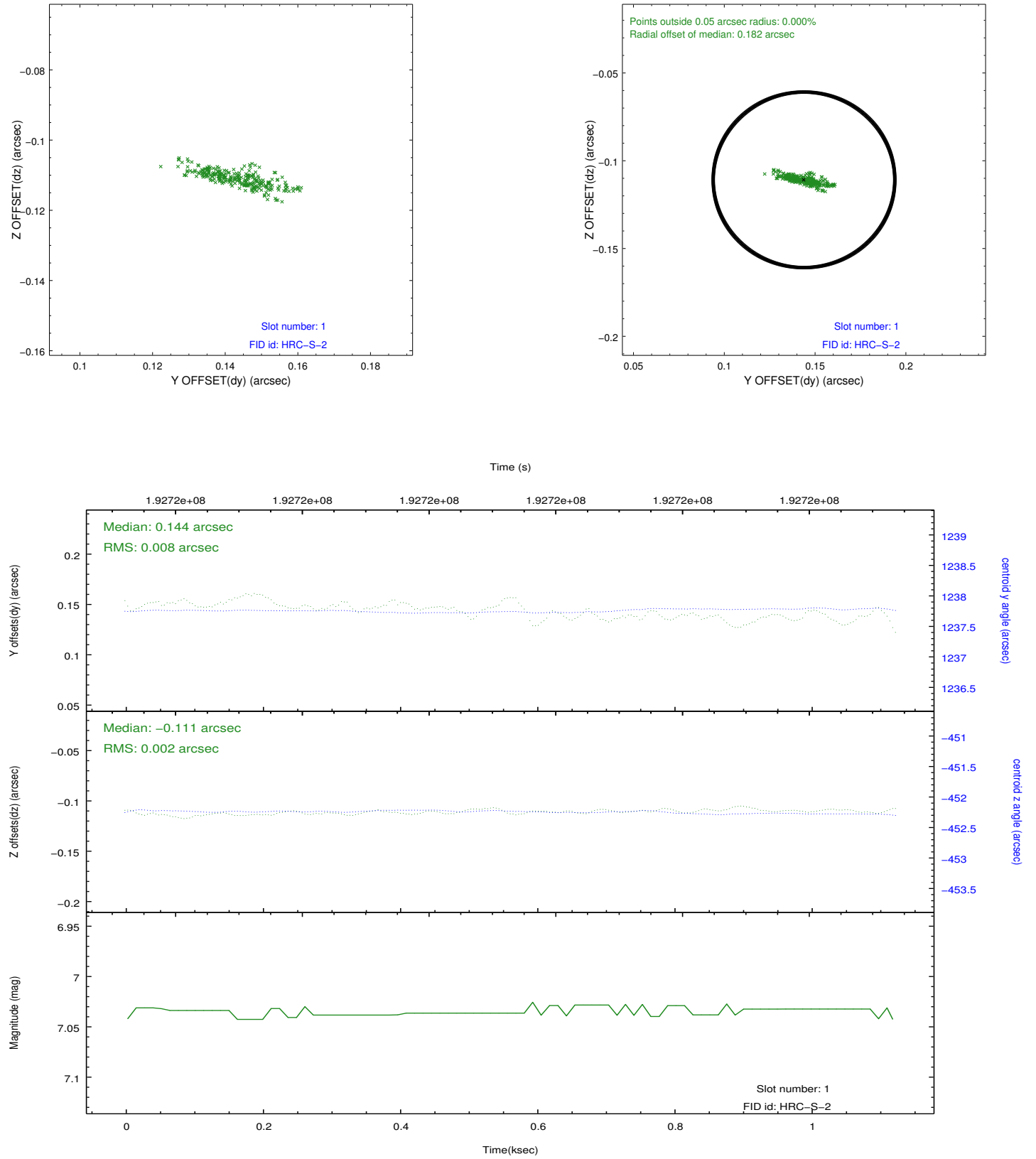


2.5 FID Slots

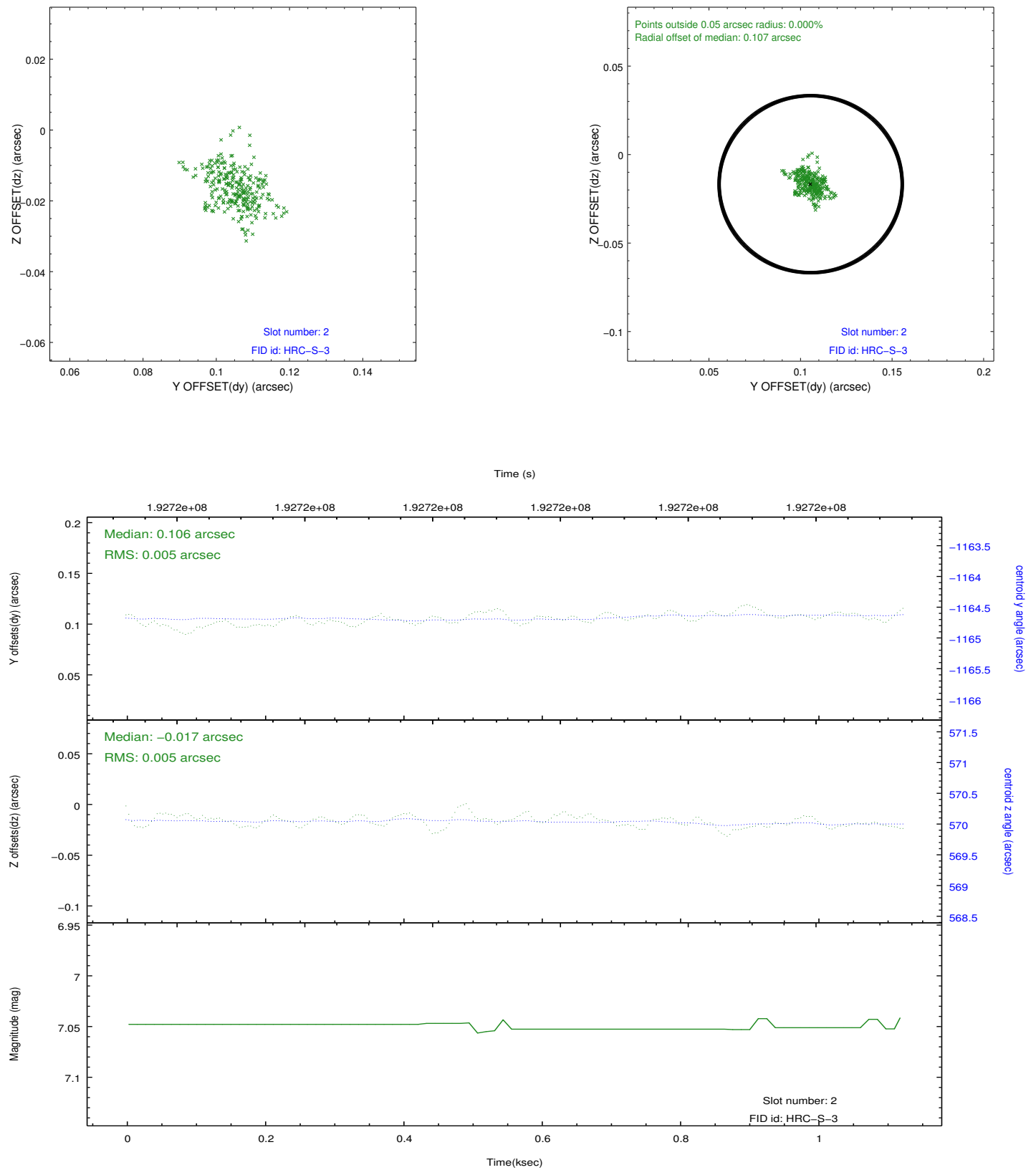
2.5.1 Slot 0



2.5.2 Slot 1



2.5.3 Slot 2



A Summary

A.1 Status

V&V Scientist	Jen Lauer
V&V Date (YYYY-MM-DD)	2012.12.10
V&V Edition	1
V&V Disposition and Status	OK
V&V Charge Time	1.088

A.2 Comments