

V&V Reference Report

L2 ASCDS Version : 7.6.7.2

Observation 5052 - L2 Version 001
Chandra X-Ray Center

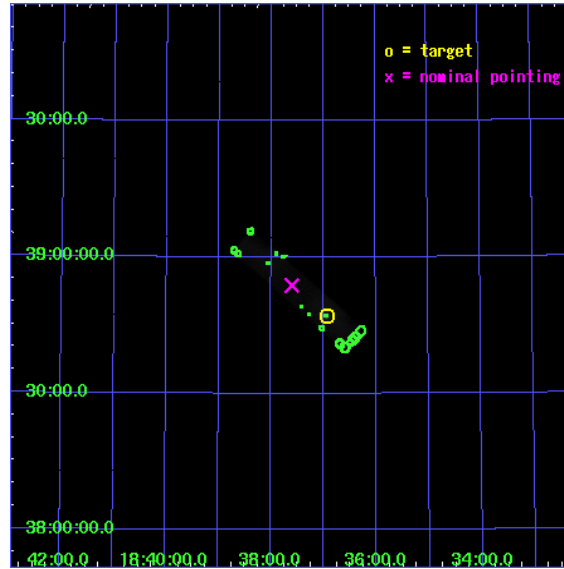
L2 Processing Date : Jun 4 2006

Contents

1	Front	2
2	OBI	3
2.1	OBI	3
2.1.1	Images	3
2.1.2	Parameters	4
2.1.3	Events	4
2.2	Compared Parameters	5
2.3	Aspect	6
2.4	Star Slots	9
2.4.1	Slot 3	9
2.4.2	Slot 4	10
2.4.3	Slot 5	11
2.4.4	Slot 6	12
2.4.5	Slot 7	13
2.5	FID Slots	14
2.5.1	Slot 0	14
2.5.2	Slot 1	15
2.5.3	Slot 2	16
3	Point Sources	17
A	Summary	18
A.1	Status	18
A.2	Comments	18

1 Front

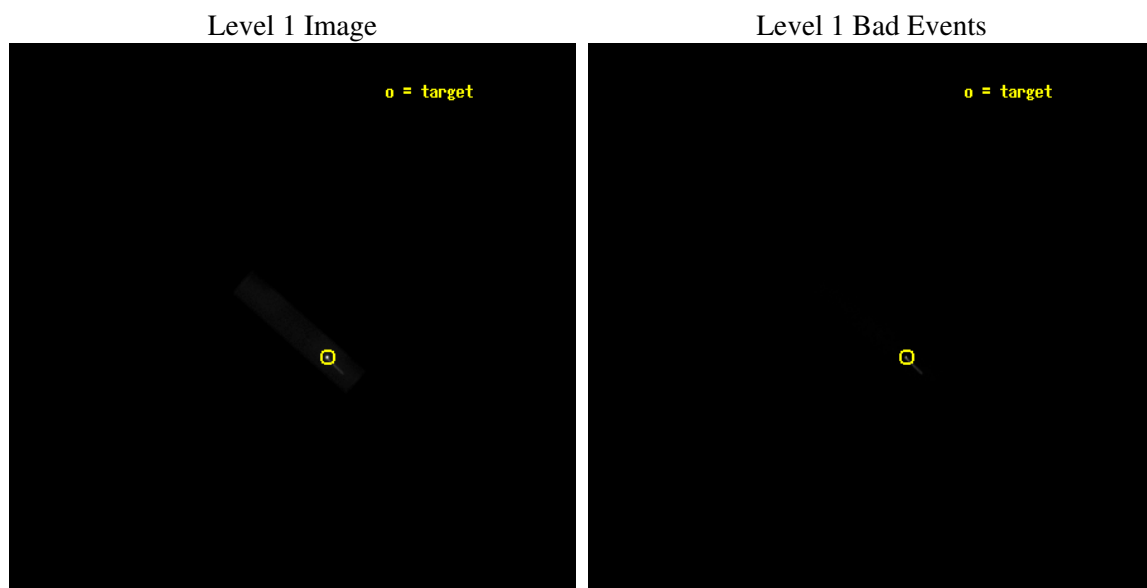
seq_num	290325
obs_id	5052
title	AO5 Measurements of the optical/UV Transmission of the HRC and ACIS Filters.
observer	Dr. CXC Calibration
object	Vega
ra_targ	279.235
dec_targ	38.783778
ra_nom	279.40060656615
dec_nom	38.896538982839
roll_nom	41.187976589997
revision	2
ontime	2142.5063436627
livetime	1536.7072741204
l2events	378148



2 OBI

2.1 OBI

2.1.1 Images



2.1.2 Parameters

obi_num	0
ascdsver	7.6.7.2
caldbver	3.2.2
date	2006-06-04T10:34:42
revision	2

sched_exp_time	2000.000000
ontime	2180.4313453436
l1events	462291

2.1.3 Events

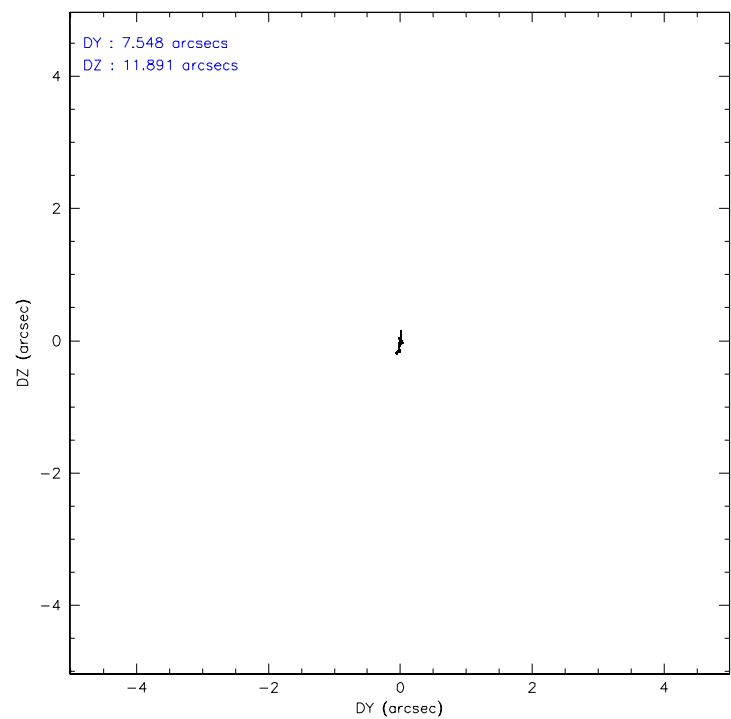
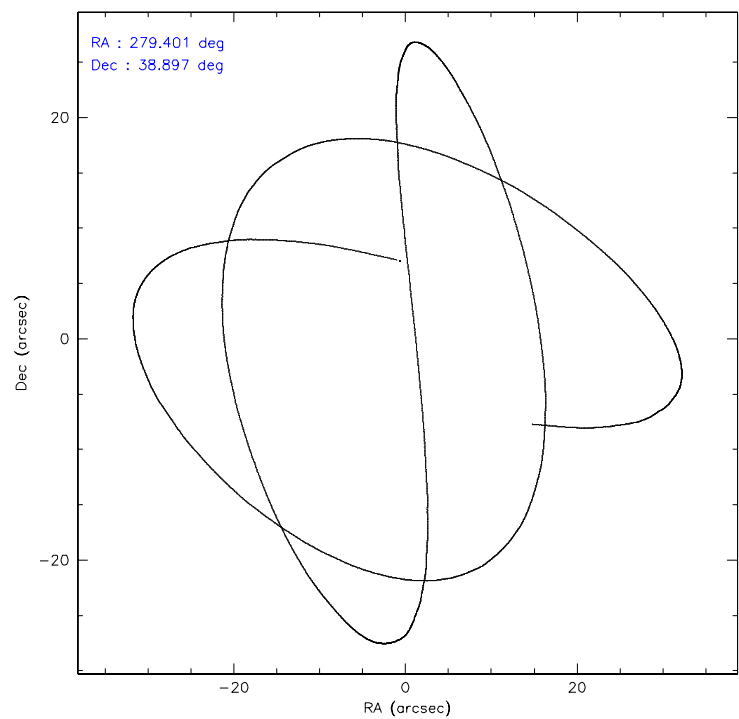
Level 1 Events

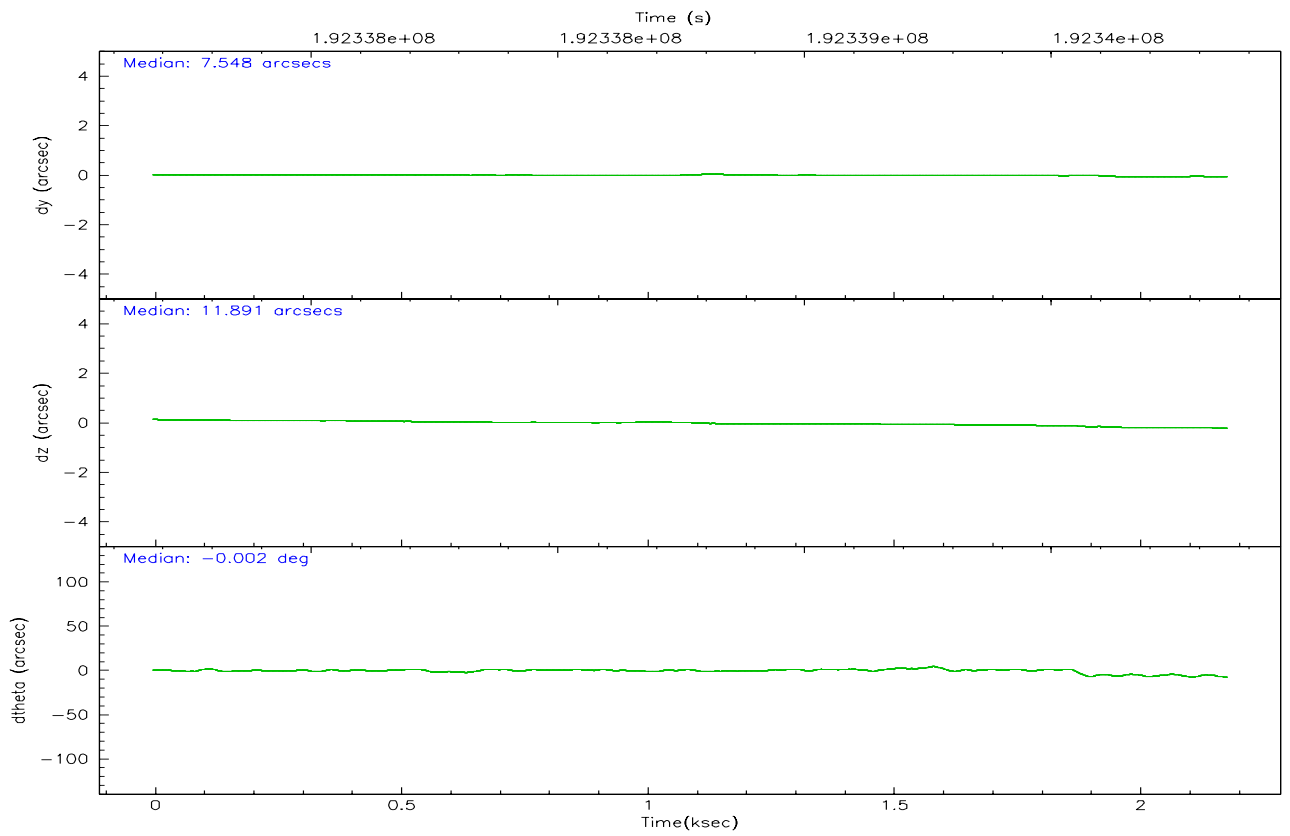
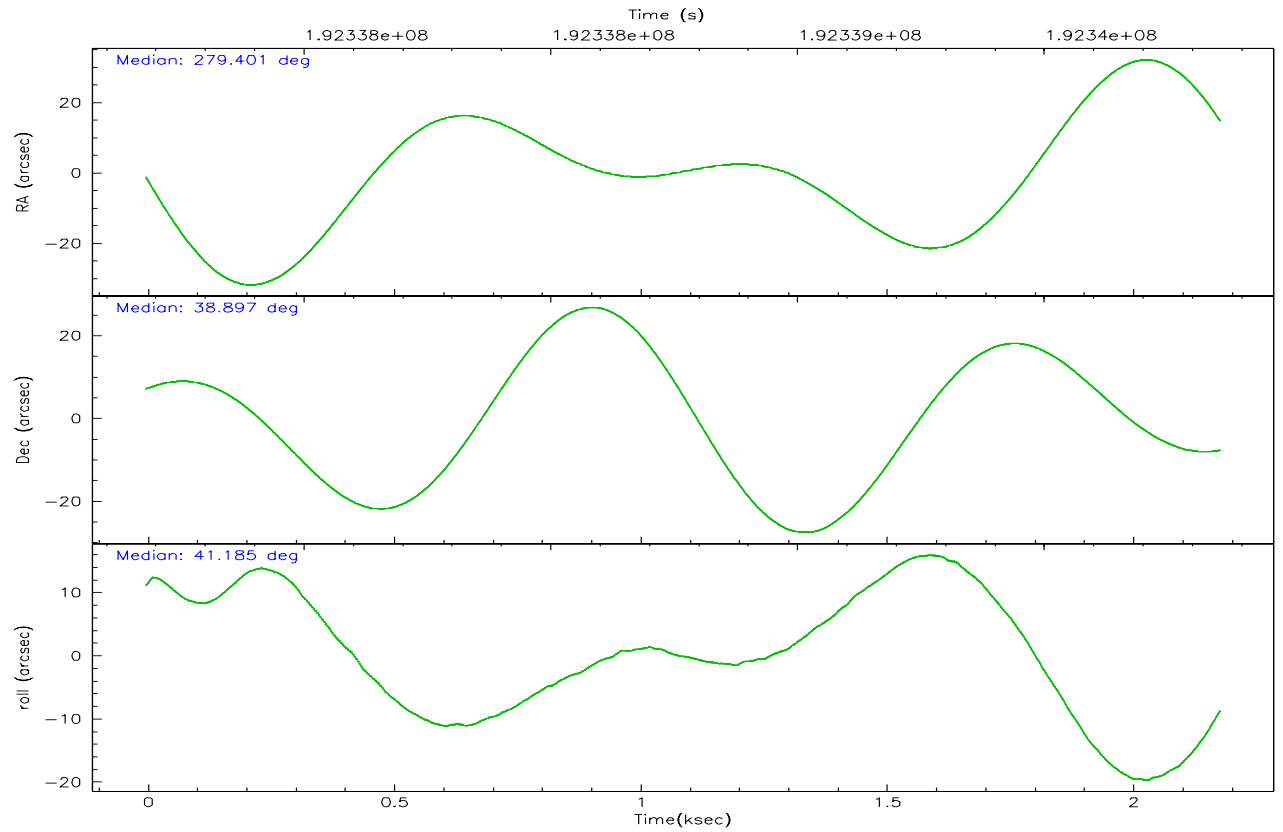
	segment 1	segment 2	segment 3
level 1 events	2226	458163	1902
rejected events	2226	74760	1902
rejected %	100%	16%	100%

2.2 Compared Parameters

Parameter	Planned	Actual	Parameter	Planned	Actual
Instrument	HRC	HRC	Obspar format version number	6	6
Detector	HRC-S	HRC-S	Obspar file type	PREDICTED	ACTUAL
Grating	NONE	NONE	Obspar update status	NONE	UPDATED
Data mode	OBSERVING	OBSERVING			
Observation mode	POINTING	POINTING			
Pointing RA	279.390592	279.4006065661512			
Pointing Dec	38.868986	38.89653898283857			
Pointing Roll	41.126934	41.1879765899975			
Window start time	191980864.184000	191980864.184000			
Window stop time	197078464.184000	197078464.184000			
SIM focus pos (mm)	-1.429586	-1.428180813131781			
SIM defocus (mm)	0.1037507710433287	0.1051558262725154			
SIM translation stage pos (mm)	250.455976	250.466033080201			
SIM translation stage offset (mm)	0	-0.01005468664627074			
Observation start time	192337856.184000	192337480.1553			
Observation start date	2004-02-05T03:09:52	2004-02-05T03:04:40			
Observation end time	192339856.184000	192339990.38041			
Observation end date	2004-02-05T03:43:12	2004-02-05T03:46:30			

2.3 Aspect



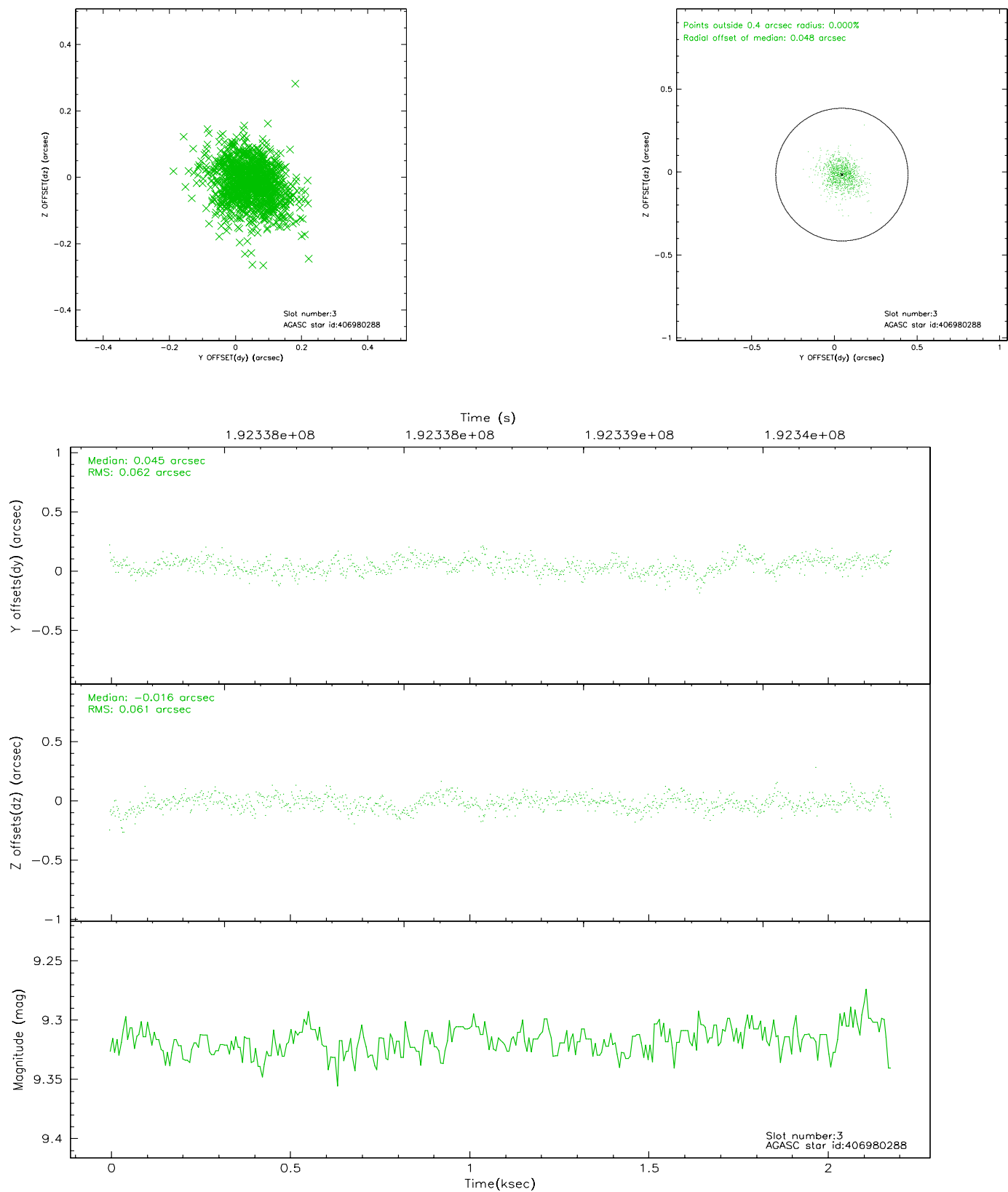


Slot Statistics

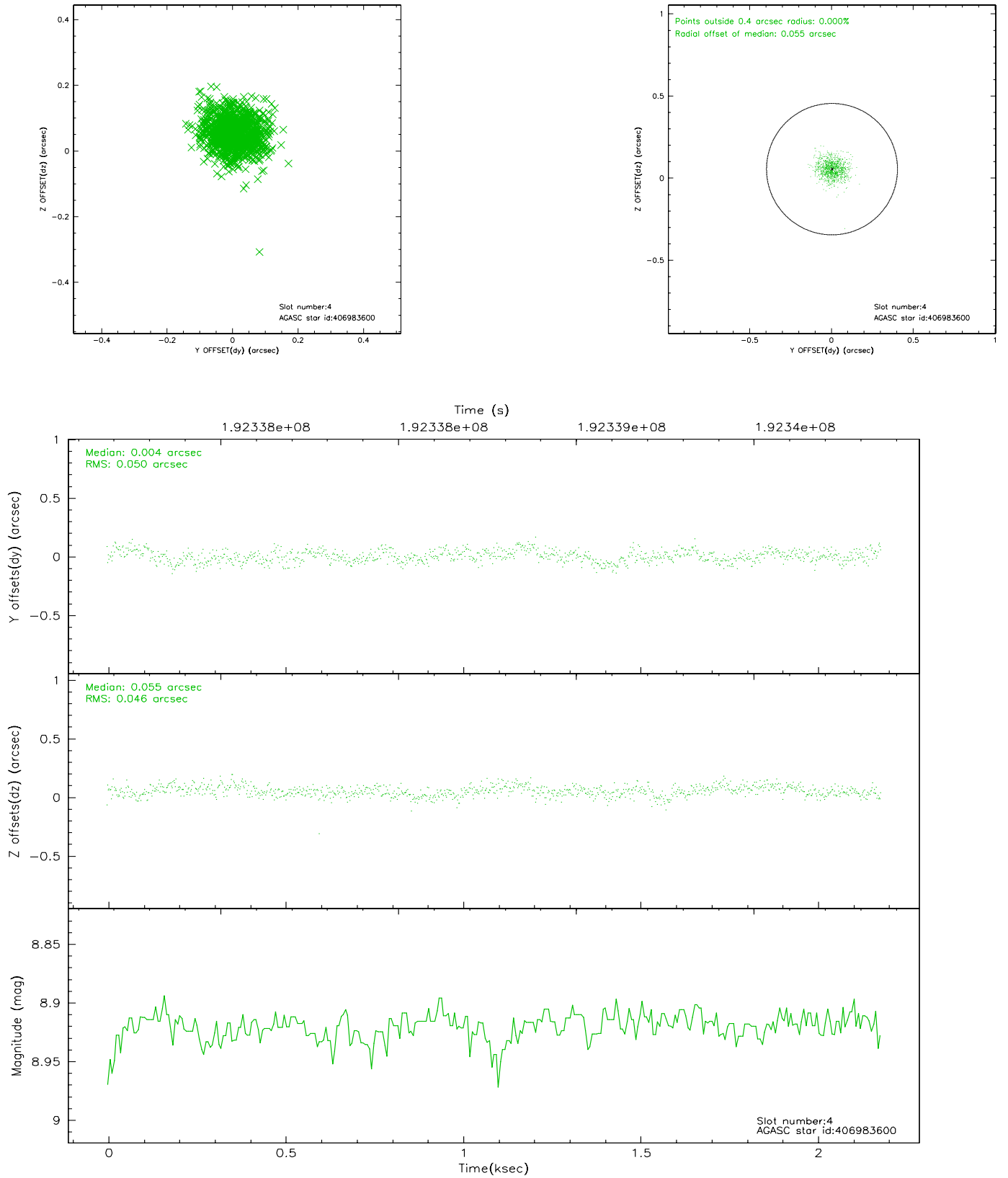
slot	status	id	mag	n_pts	med_dy	med_dz	dr1	dr2	ra	dec	mean_y	mean_z
0	FID	HRC-S-2	7.02	532	0.117	-0.081	0.012	0.082	0.000000	0.000000	1237.96	-453.20
1	FID	HRC-S-3	7.03	532	0.060	-0.106	0.007	0.030	0.000000	0.000000	-1162.15	568.14
2	FID	HRC-S-4	7.01	532	0.229	-0.109	0.012	0.086	0.000000	0.000000	1234.48	572.59
3	GUIDE	406980288	9.32	1065	0.045	-0.016	0.090	0.158	278.903147	39.061646	-566.54	1421.48
4	GUIDE	406983600	8.92	1065	0.004	0.055	0.073	0.113	279.940957	39.020708	1521.48	-596.72
5	GUIDE	406985120	7.42	1065	-0.058	-0.025	0.069	0.113	278.839732	38.894839	-1096.90	1087.98
6	GUIDE	406989616	8.23	1065	-0.002	0.031	0.067	0.108	279.202881	38.520843	-1223.12	-595.09
7	GUIDE	407521232	8.64	1063	0.008	-0.039	0.072	0.118	279.628883	39.431715	1831.06	1090.20

2.4 Star Slots

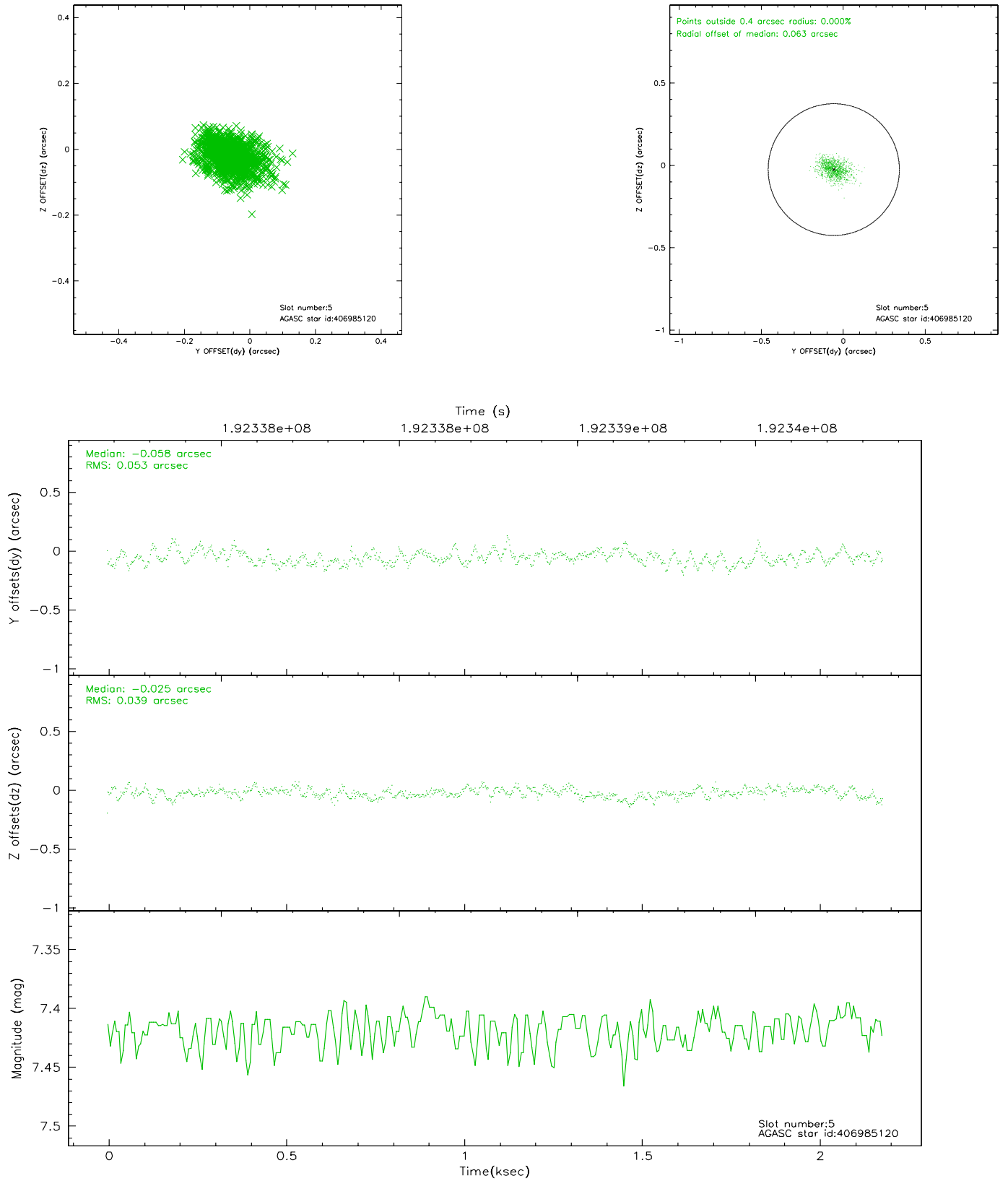
2.4.1 Slot 3



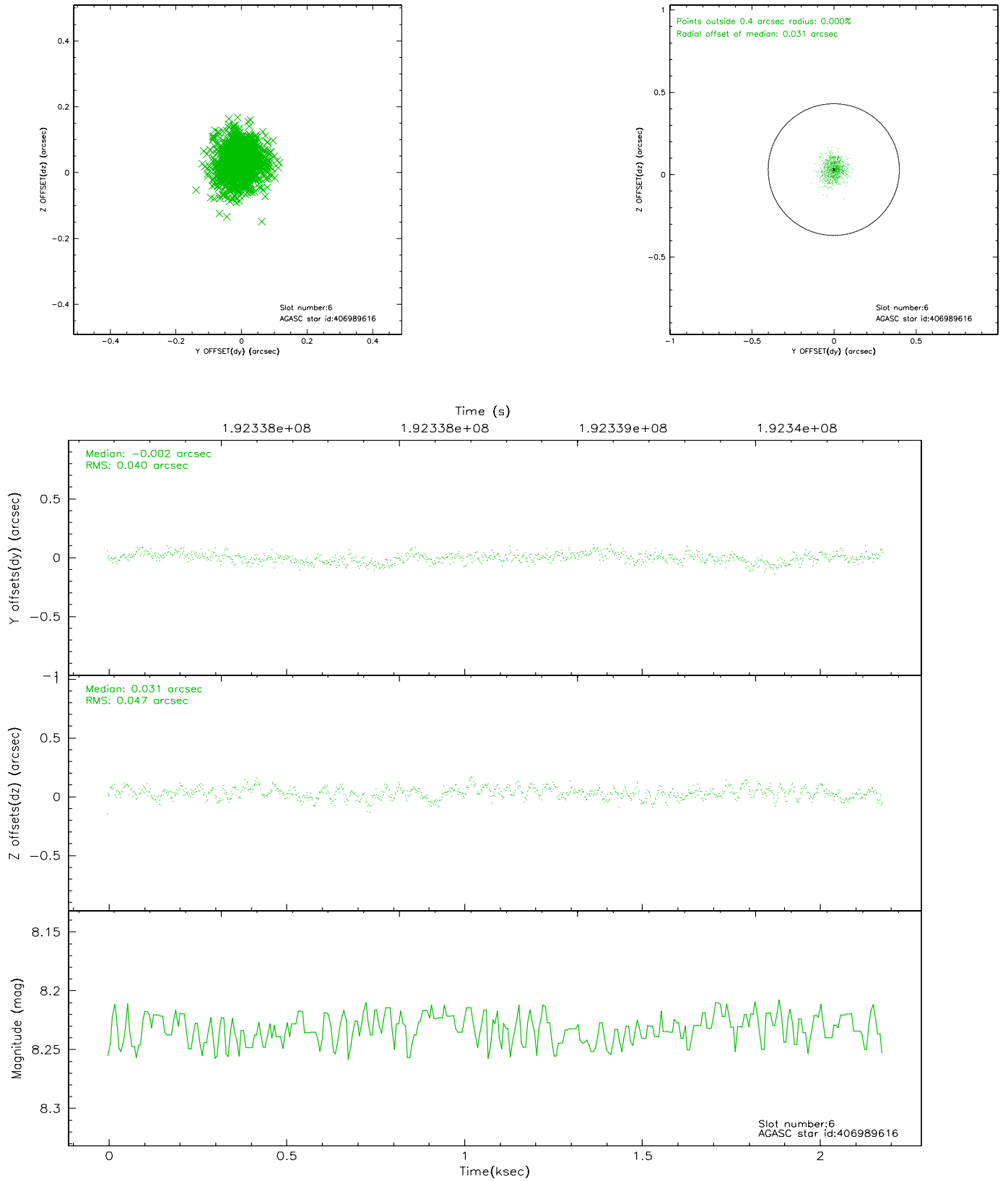
2.4.2 Slot 4



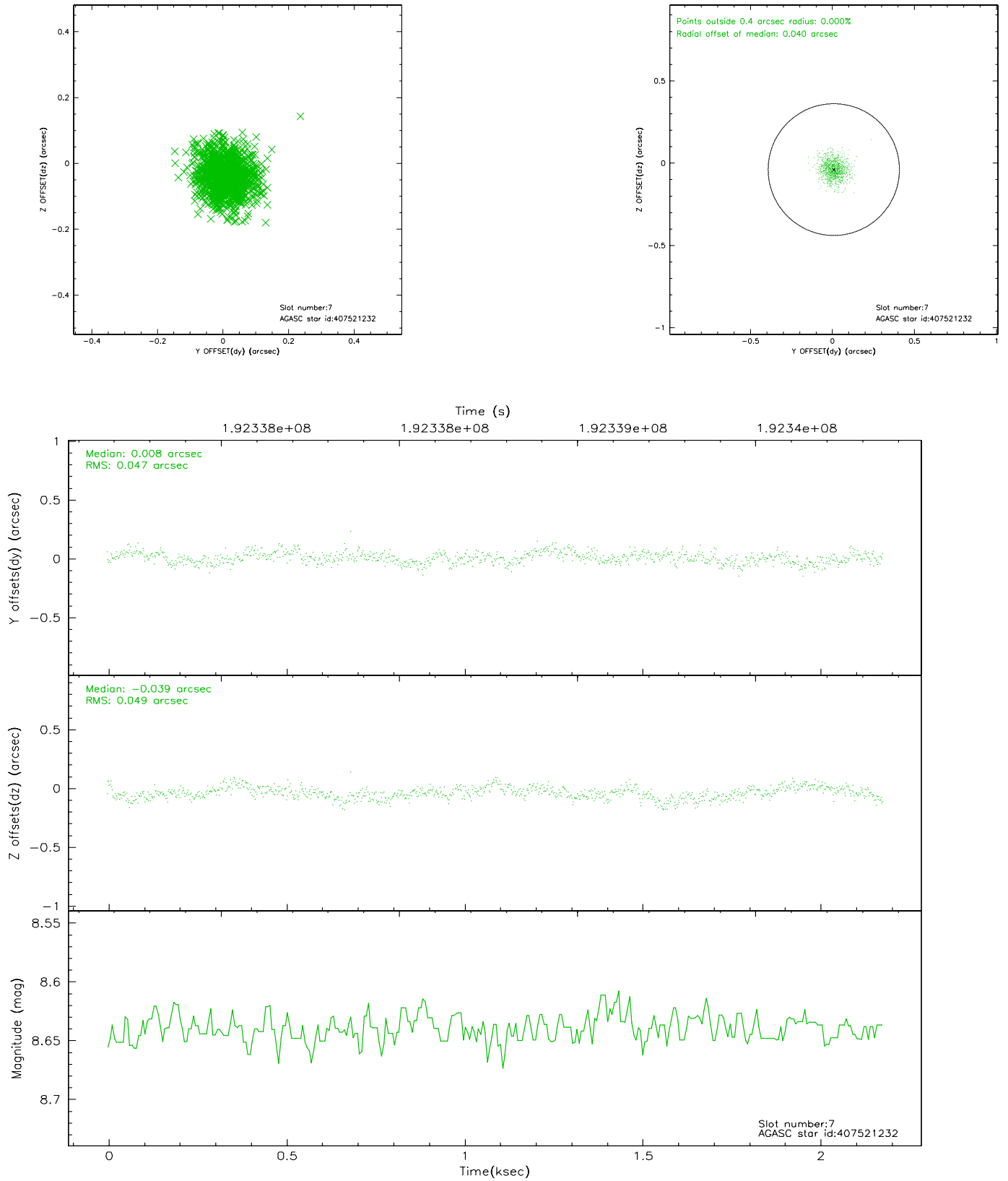
2.4.3 Slot 5



2.4.4 Slot 6

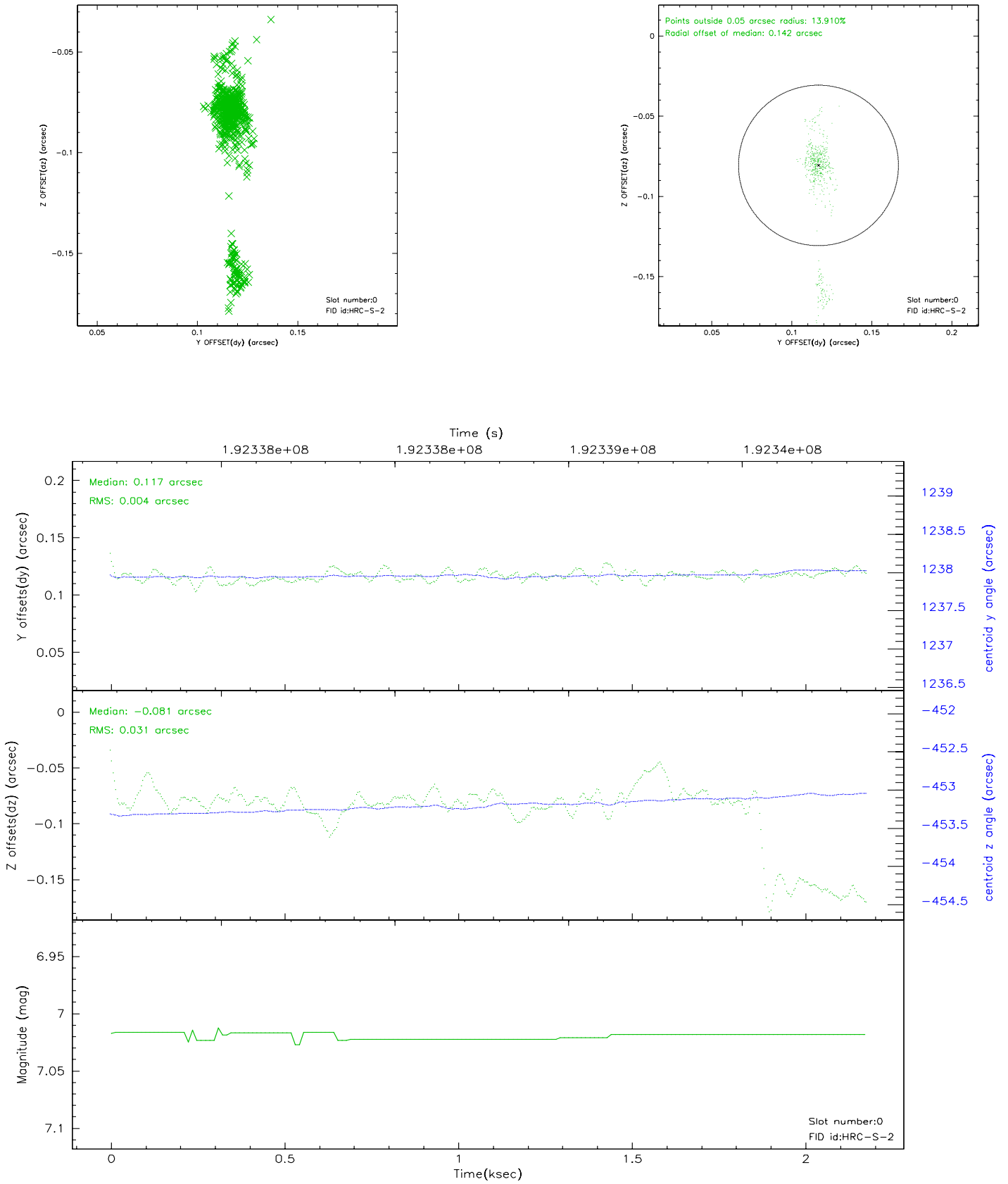


2.4.5 Slot 7

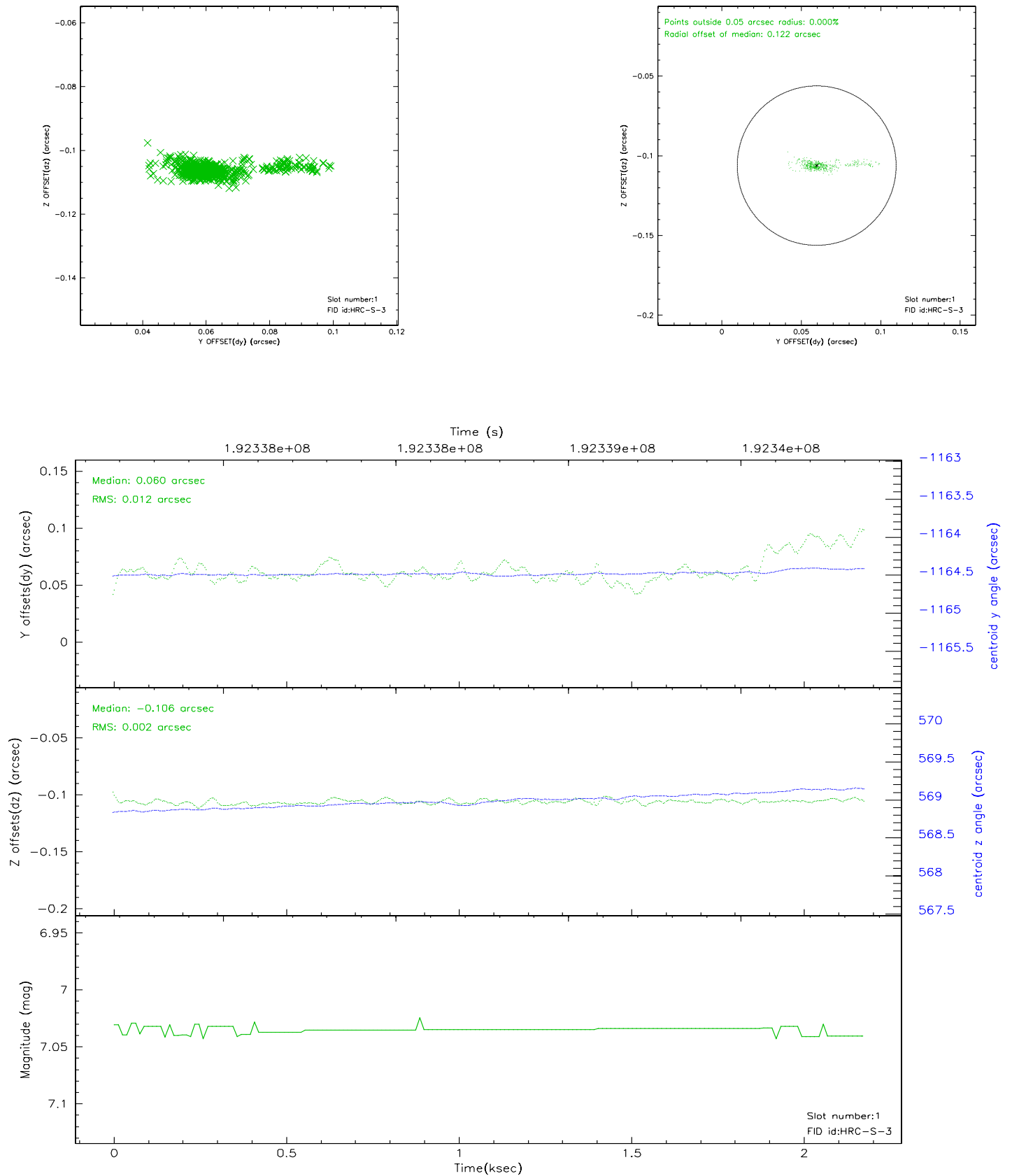


2.5 FID Slots

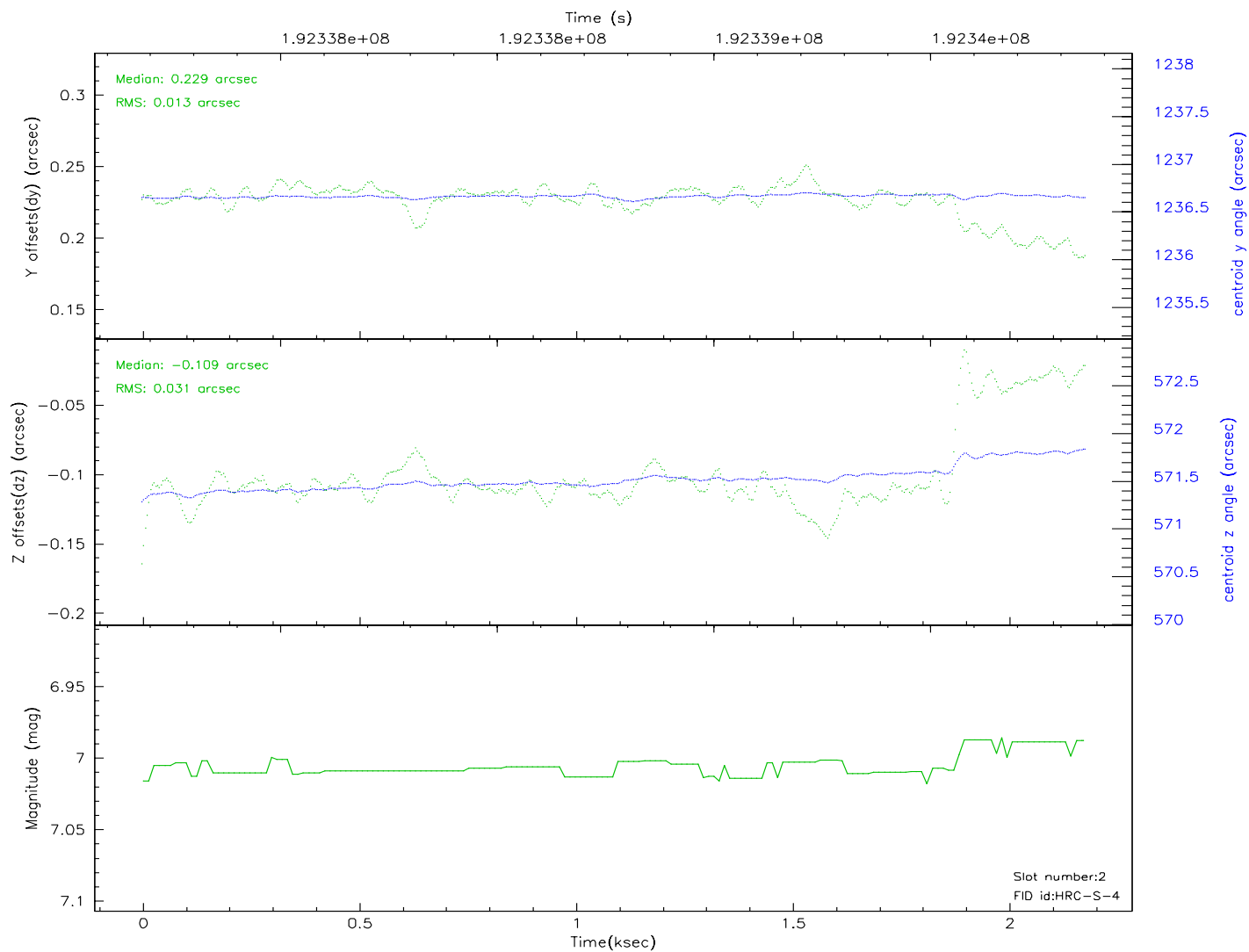
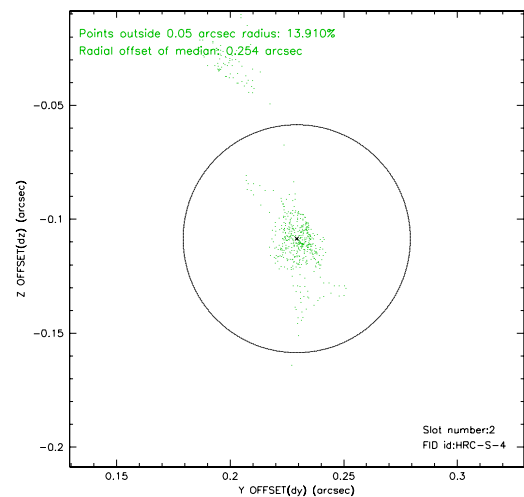
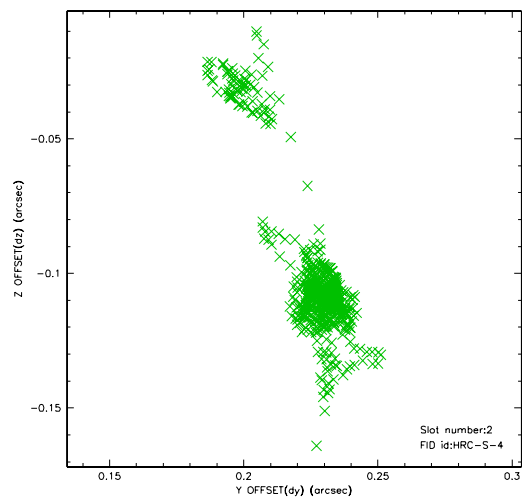
2.5.1 Slot 0



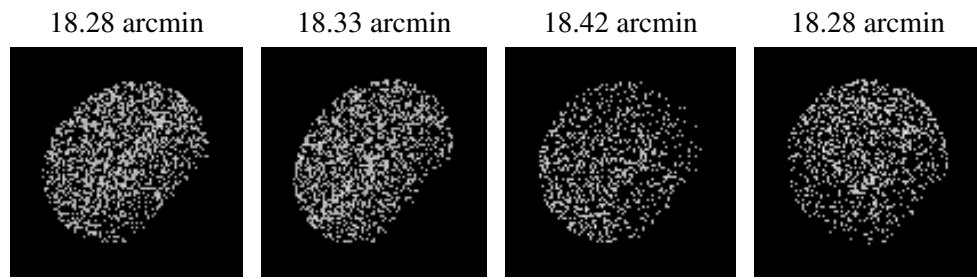
2.5.2 Slot 1



2.5.3 Slot 2



3 Point Sources



A Summary

A.1 Status

V&V Scientist	Jen Lauer
V&V Date (YYYY-MM-DD)	2006.06.05
V&V Edition	1
V&V Disposition and Status	OK
V&V Charge Time	2.142

A.2 Comments

Window constraint met.

The keywords DTCOR, EXPOSURE, and LIVETIME in the Level 2 event file and the keyword DTCOR in the Level 1 event file have been incorrectly determined due to a software bug. The correct value of DTCOR can be found in the file DTFSTATS file that can be obtained by downloading the Secondary Data Products. In most cases, the difference between the correct DTCOR value and the incorrect DTCOR value in the Level 2 event file is very small and does not affect the data analysis. However, there are cases of significant differences and the user is advised to use the DTCOR in the DTFSTATS file for analysis. Corrected data products will be made available in the archive as soon as feasible.