

V&V Reference Report

L2 ASCDS Version : 7.6.7.2

Observation 4992 - L2 Version 001
Chandra X-Ray Center

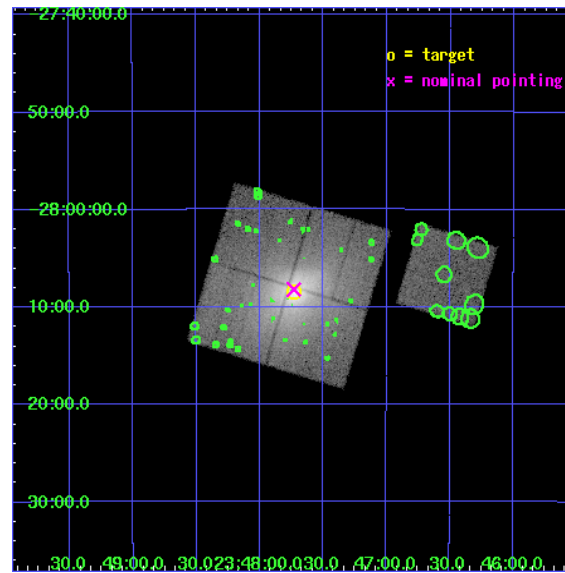
L2 Processing Date : May 23 2006

Contents

1	Front	2
2	OBI	3
2.1	OBI	3
2.1.1	Images	3
2.1.2	Bias	3
2.1.3	Parameters	4
2.1.4	Events	4
2.2	Compared Parameters	5
2.3	Aspect	6
2.4	Star Slots	9
2.4.1	Slot 3	9
2.4.2	Slot 4	10
2.4.3	Slot 5	11
2.4.4	Slot 6	12
2.4.5	Slot 7	13
2.5	FID Slots	14
2.5.1	Slot 0	14
2.5.2	Slot 1	15
2.5.3	Slot 2	16
3	Point Sources	17
A	Summary	18
A.1	Status	18
A.2	Comments	18

1 Front

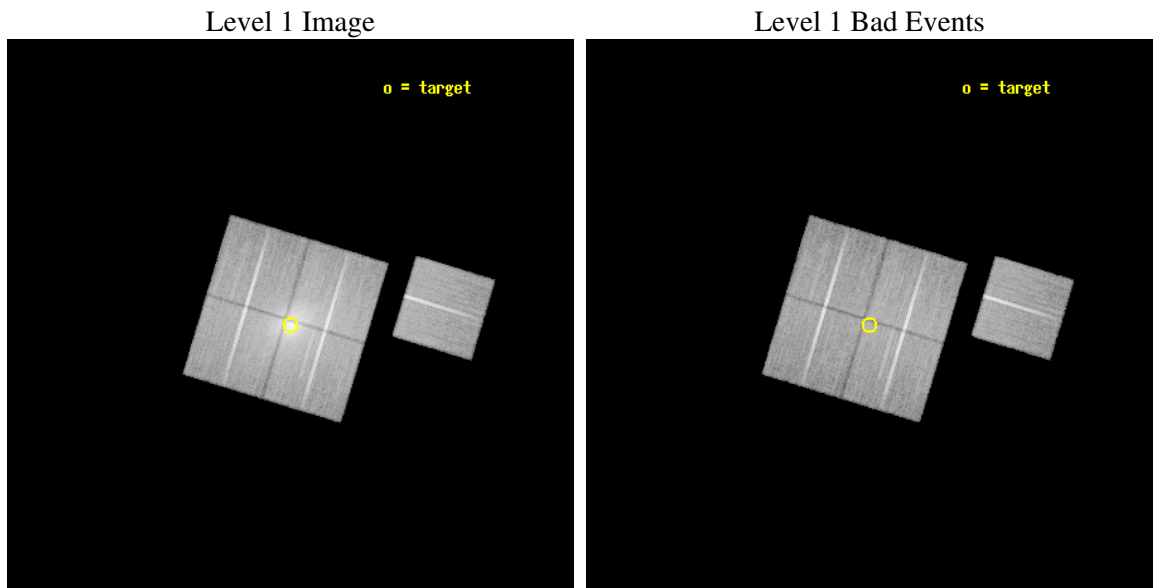
seq_num	800435
obs_id	4992
title	A detailed study of entropy in low mass galaxy clusters
observer	Dr Edward Lloyd-Davies
object	Abell 4038
dtcycle	0
cycle	P
ra_targ	356.932083
dec_targ	-28.1415
ra_nom	356.93263290122
dec_nom	-28.136922641723
roll_nom	106.89179529884
revision	2
ontime	33972.899934679
livetime	33529.018986548
ontime0	33969.758944541
ontime1	33969.758964419
ontime2	33957.19516325
ontime3	33972.899934679
ontime6	33972.899934679
l2events	272039



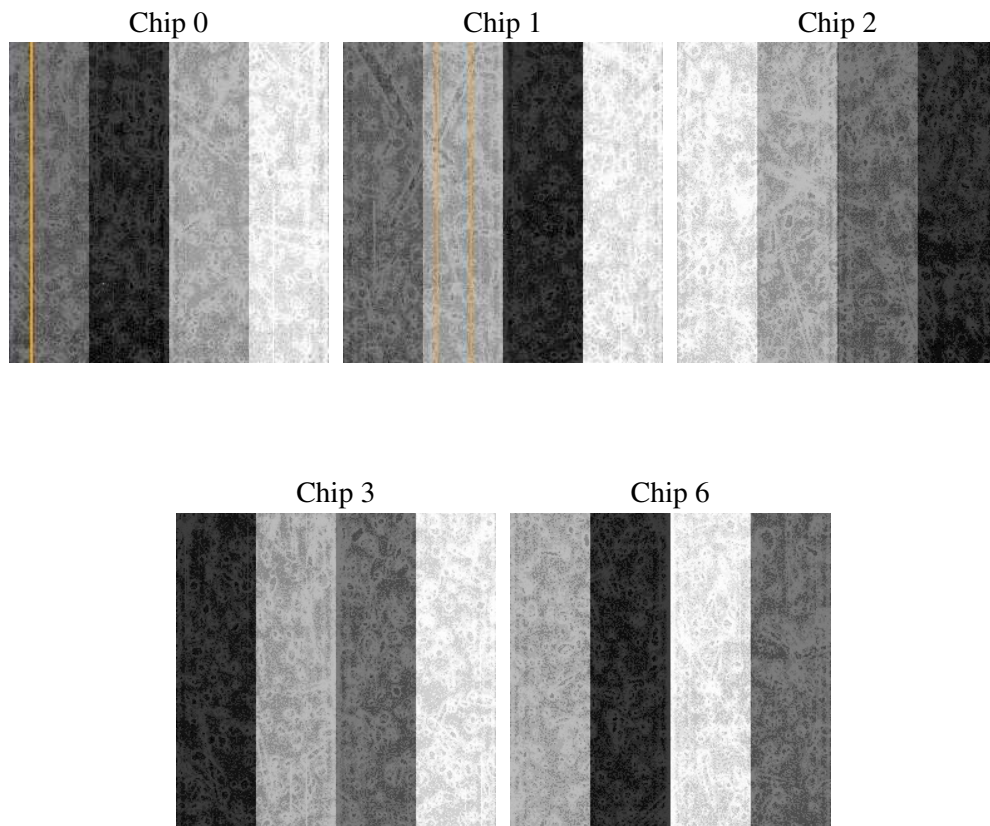
2 OBI

2.1 OBI

2.1.1 Images



2.1.2 Bias



2.1.3 Parameters

obi_num	0
ascdsver	7.6.7.2
caldbver	3.2.2
date	2006-05-23T21:41:17
revision	2

sched_exp_time	33921.000000
ontime	33976.237535864
ontime0	33973.096545726
ontime1	33973.096565604
ontime2	33960.532764435
ontime3	33976.237535864
ontime6	33976.237535864
l1events	1259782

2.1.4 Events

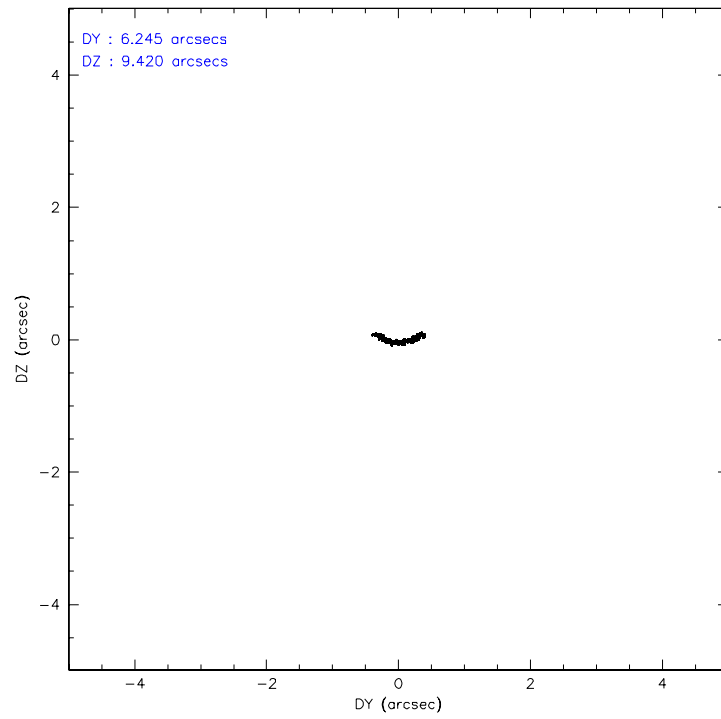
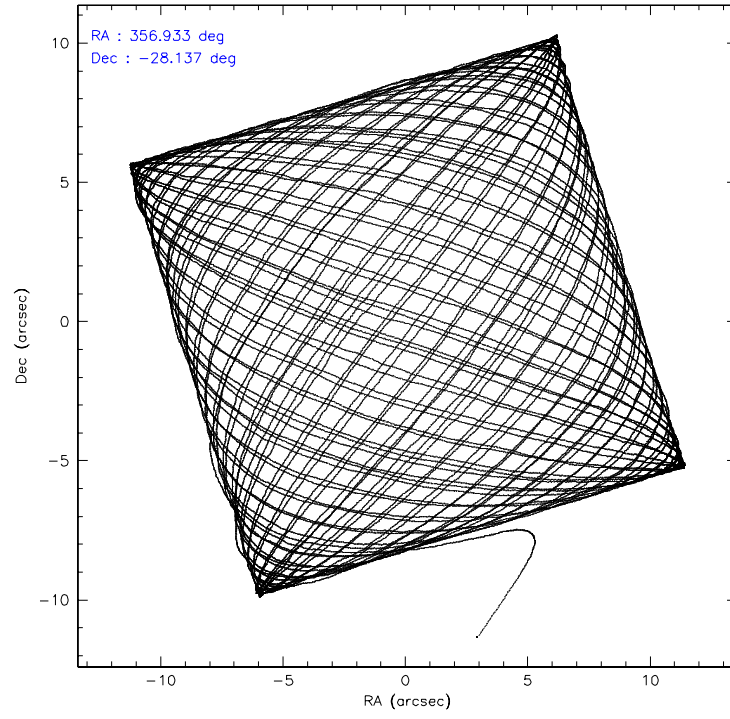
	ccd 0	ccd 1	ccd 2	ccd 3	ccd 6
level 1 events	219000	249669	288125	285520	217468
rejected events	178384	178659	213708	195212	193452
rejected %	81%	71%	74%	68%	88%

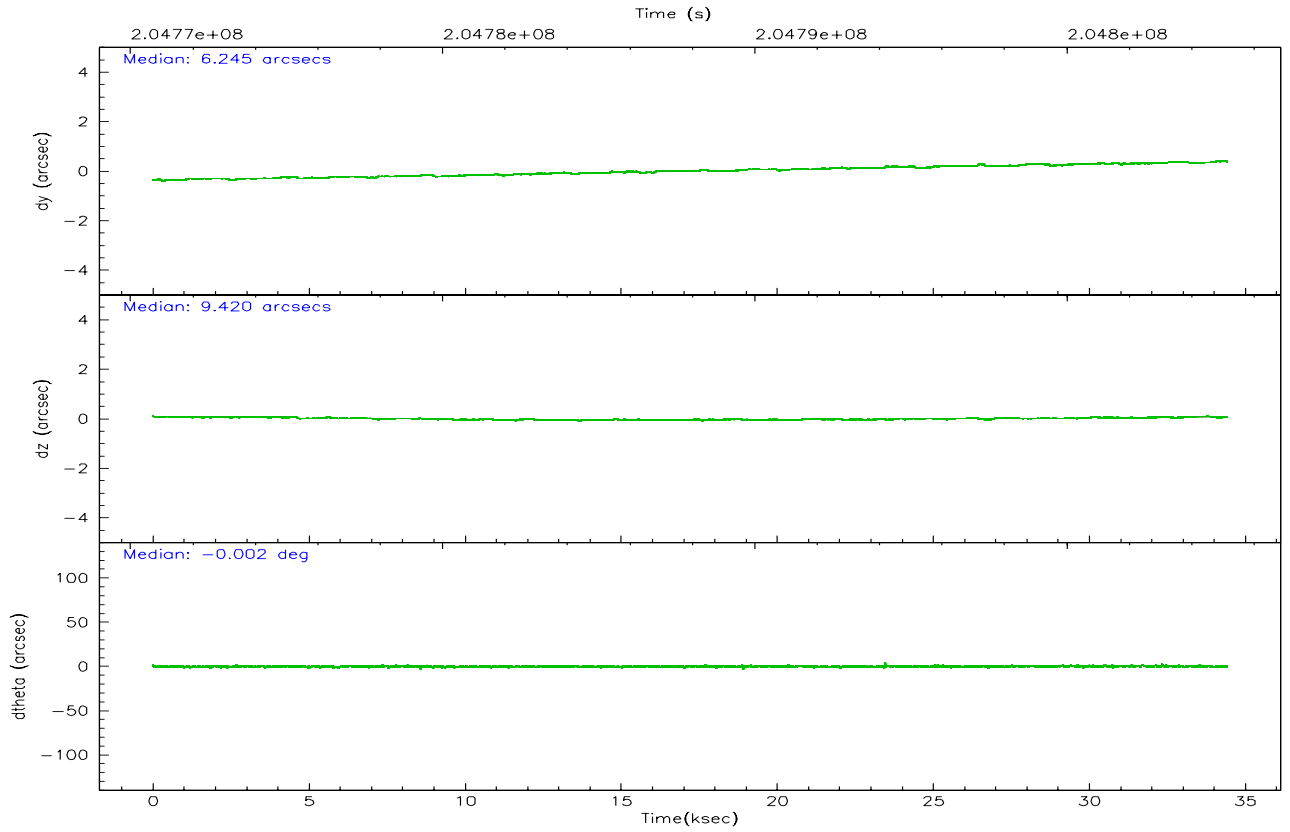
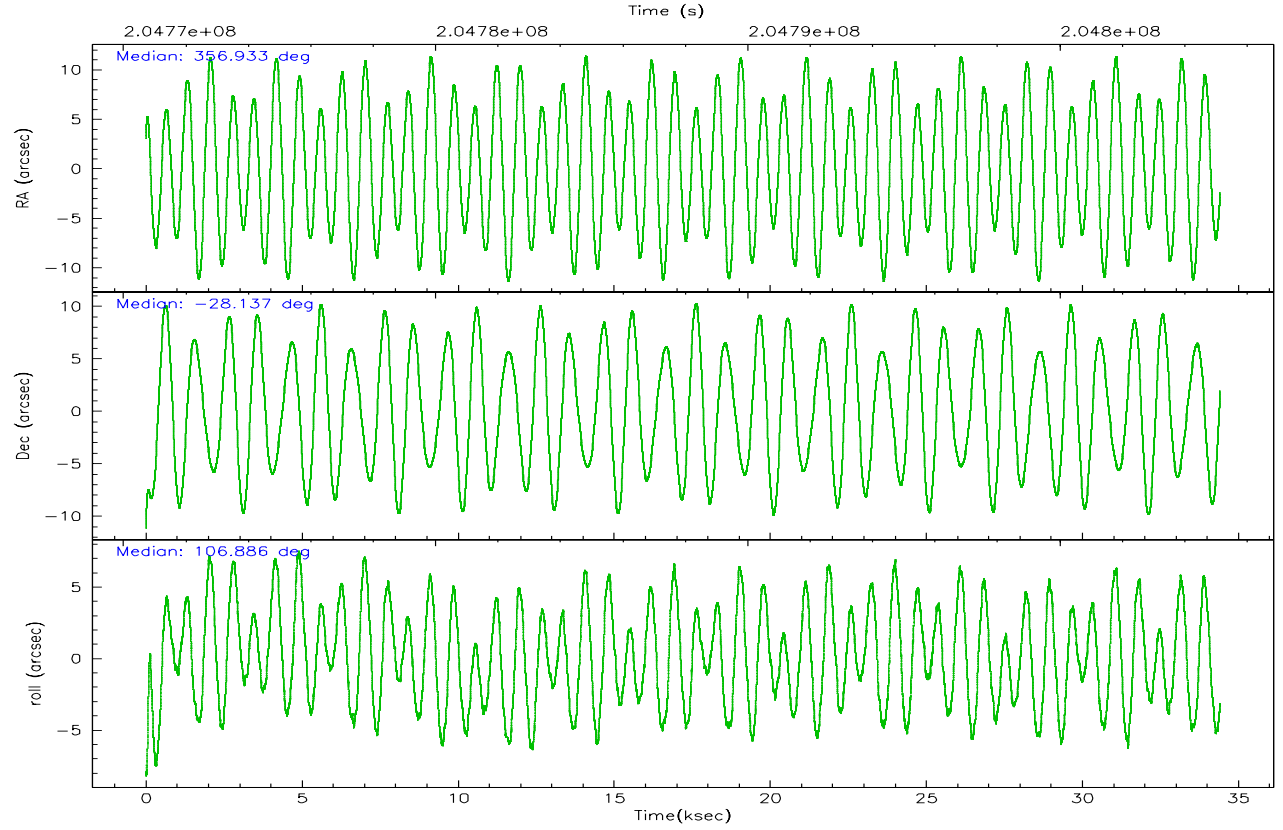
	ccd 0	ccd 1	ccd 2	ccd 3	ccd 6
grade 0 events	23500	47808	52546	66126	9476
	10%	19%	18%	23%	4%
grade 1 events	185	271	405	459	92
	0%	0%	0%	0%	0%
grade 2 events	6806	9798	9581	10647	4922
	3%	3%	3%	3%	2%
grade 3 events	3112	3982	3703	4211	2551
	1%	1%	1%	1%	1%
grade 4 events	2733	3833	3735	4131	2515
	1%	1%	1%	1%	1%
grade 5 events	7475	7935	7467	8671	8400
	3%	3%	2%	3%	3%
grade 6 events	4469	5603	4860	5199	4553
	2%	2%	1%	1%	2%
grade 7 events	170720	170439	205828	186076	184959
	77%	68%	71%	65%	85%

2.2 Compared Parameters

Parameter	Planned	Actual	Parameter	Planned	Actual
Instrument	ACIS	ACIS	Obspar format version number	6	6
Detector	ACIS-01236	ACIS-01236	Obspar file type	PREDICTED	ACTUAL
Grating	NONE	NONE	Obspar update status	NONE	UPDATED
Data mode	VFAINT	VFAINT	On-chip summing requested	N	N
Observation mode	POINTING	POINTING	Subarray requested	NONE	NONE
Pointing RA	356.955406	356.9326329012157	Alternating exposures requested	N	N
Pointing Dec	-28.155521	-28.13692264172316	Primary exposure time	0.000000	3.1
Pointing Roll	106.693856	106.8917952988367			
SIM focus pos (mm)	-0.782348	-0.7809083437167272			
SIM defocus (mm)	0	0.001439871863259334			
SIM translation stage pos (mm)	-233.592463	-233.5874344608287			
SIM translation stage offset (mm)	0	-0.005018542100998502			
Observation start time	204771213.184000	204770126.46505			
Observation start date	2004-06-28T00:52:29	2004-06-28T00:35:26			
Observation end time	204805134.184000	204805865.65413			
Observation end date	2004-06-28T10:17:50	2004-06-28T10:31:05			
Read mode	TIMED	TIMED			

2.3 Aspect



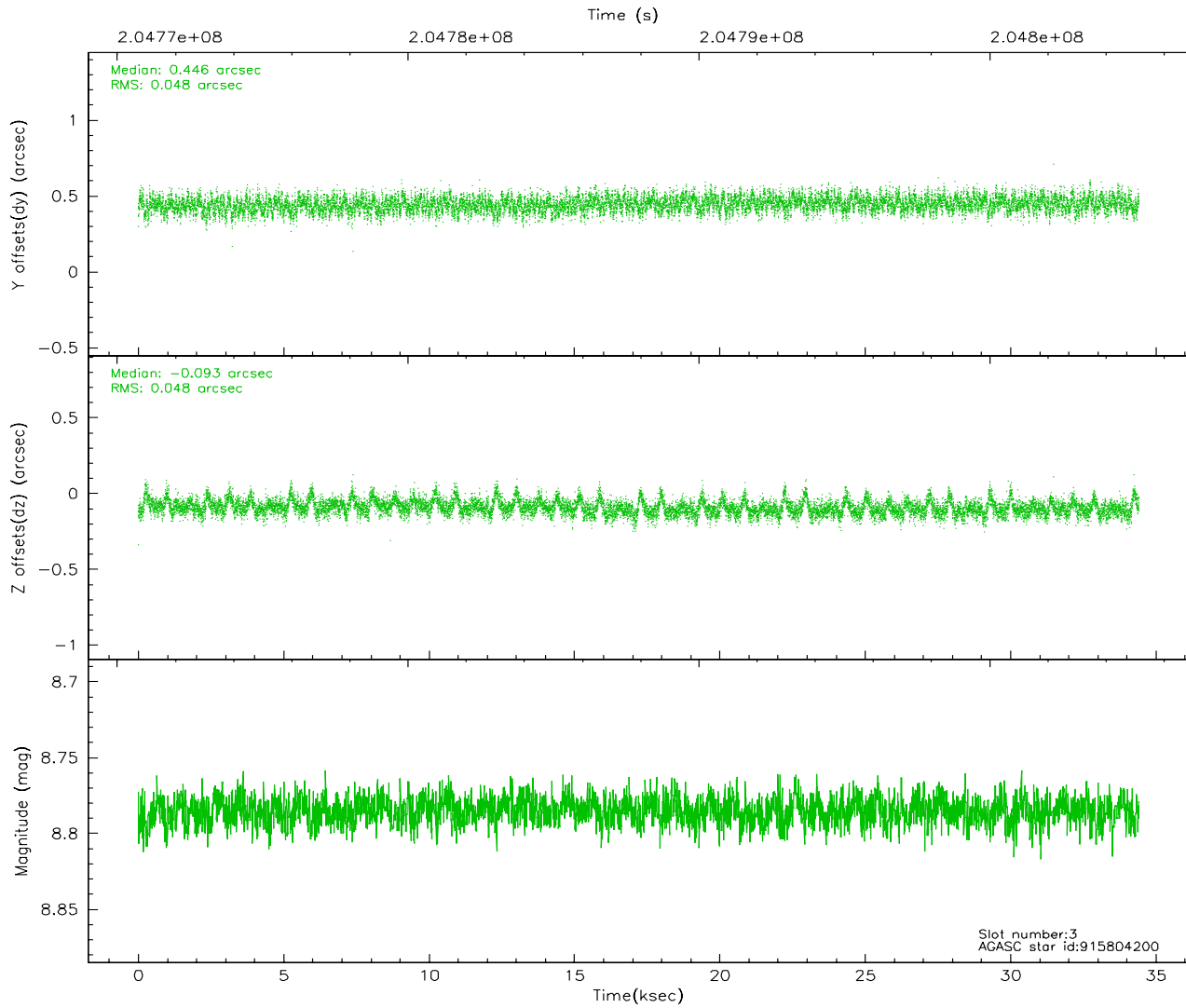
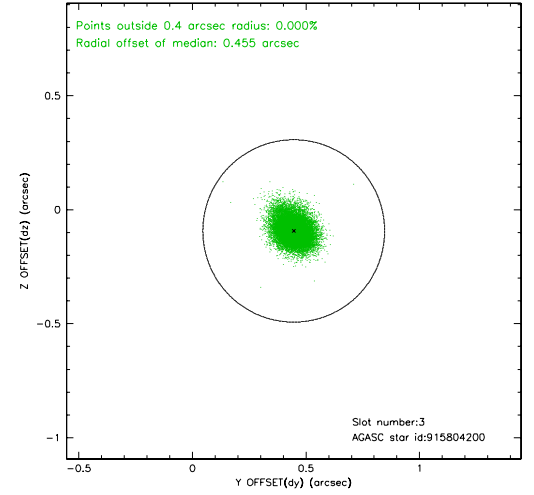
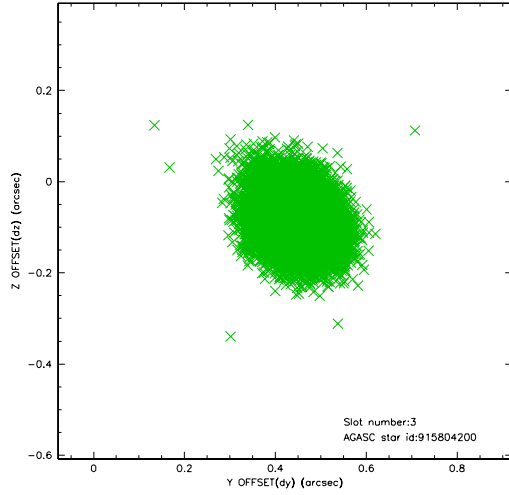


Slot Statistics

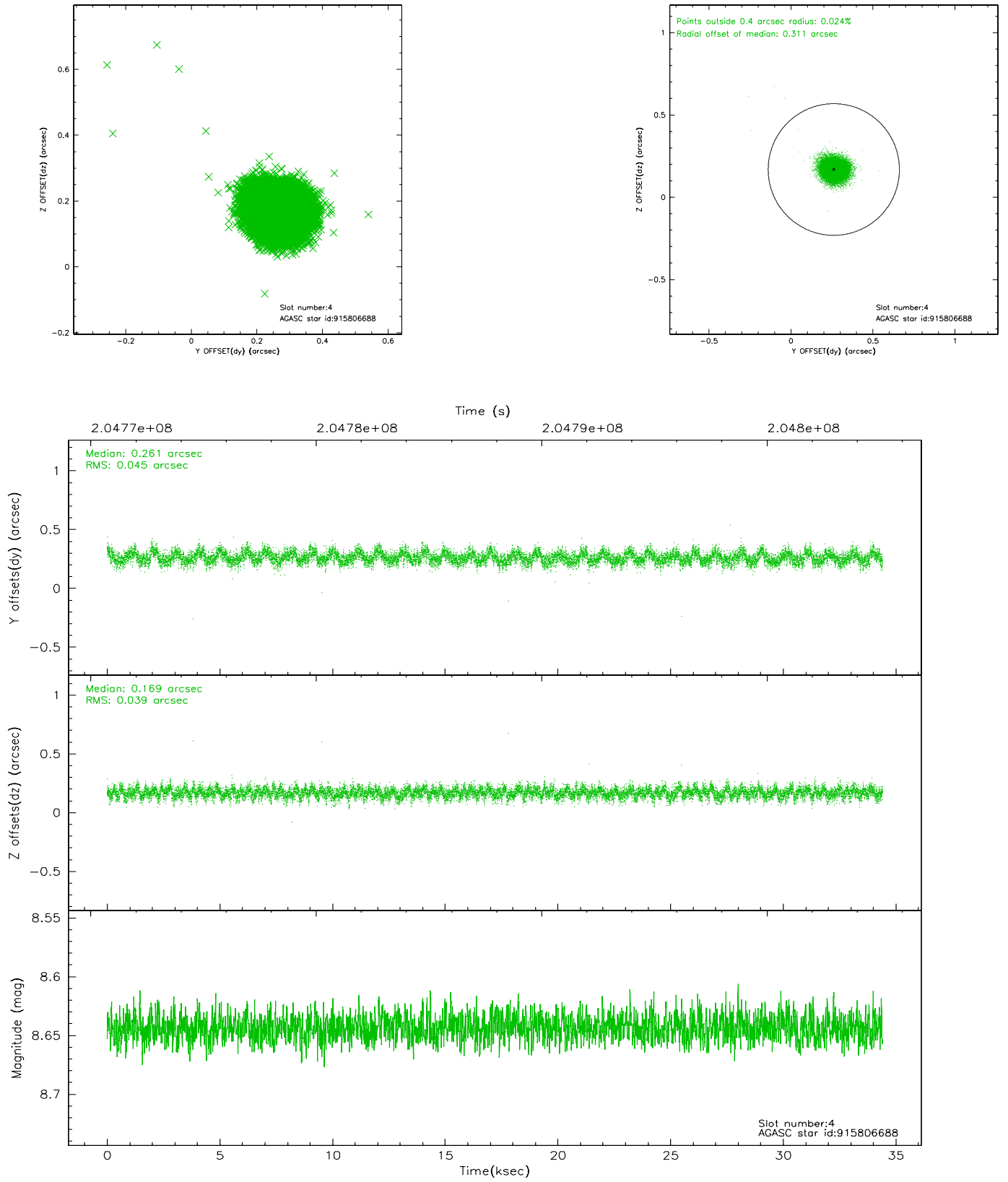
slot	status	id	mag	n_pts	med_dy	med_dz	dr1	dr2	ra	dec	mean_y	mean_z
0	FID	ACIS-I-2	7.13	8394	-0.037	-0.033	0.011	0.018	0.000000	0.000000	-760.76	-839.28
1	FID	ACIS-I-4	7.18	8392	0.072	0.038	0.012	0.019	0.000000	0.000000	2153.39	1066.95
2	FID	ACIS-I-5	7.22	8394	-0.134	0.064	0.011	0.018	0.000000	0.000000	-1814.63	1064.86
3	GUIDE	915804200	8.79	16787	0.446	-0.093	0.072	0.118	356.699199	-28.786294	-1943.07	1426.75
4	GUIDE	915806688	8.64	16779	0.261	0.169	0.063	0.100	357.088845	-27.897504	767.57	-673.49
5	GUIDE	915807248	9.94	16771	0.258	0.331	0.164	0.256	357.192532	-27.548911	1874.44	-1351.47
6	GUIDE	915940872	8.00	16787	0.332	0.235	0.100	0.147	357.438295	-28.341635	-1083.42	-1272.28
7	GUIDE	915809360	9.01	16780	-1.290	-0.650	0.084	0.134	357.210134	-28.120770	-114.23	-810.96

2.4 Star Slots

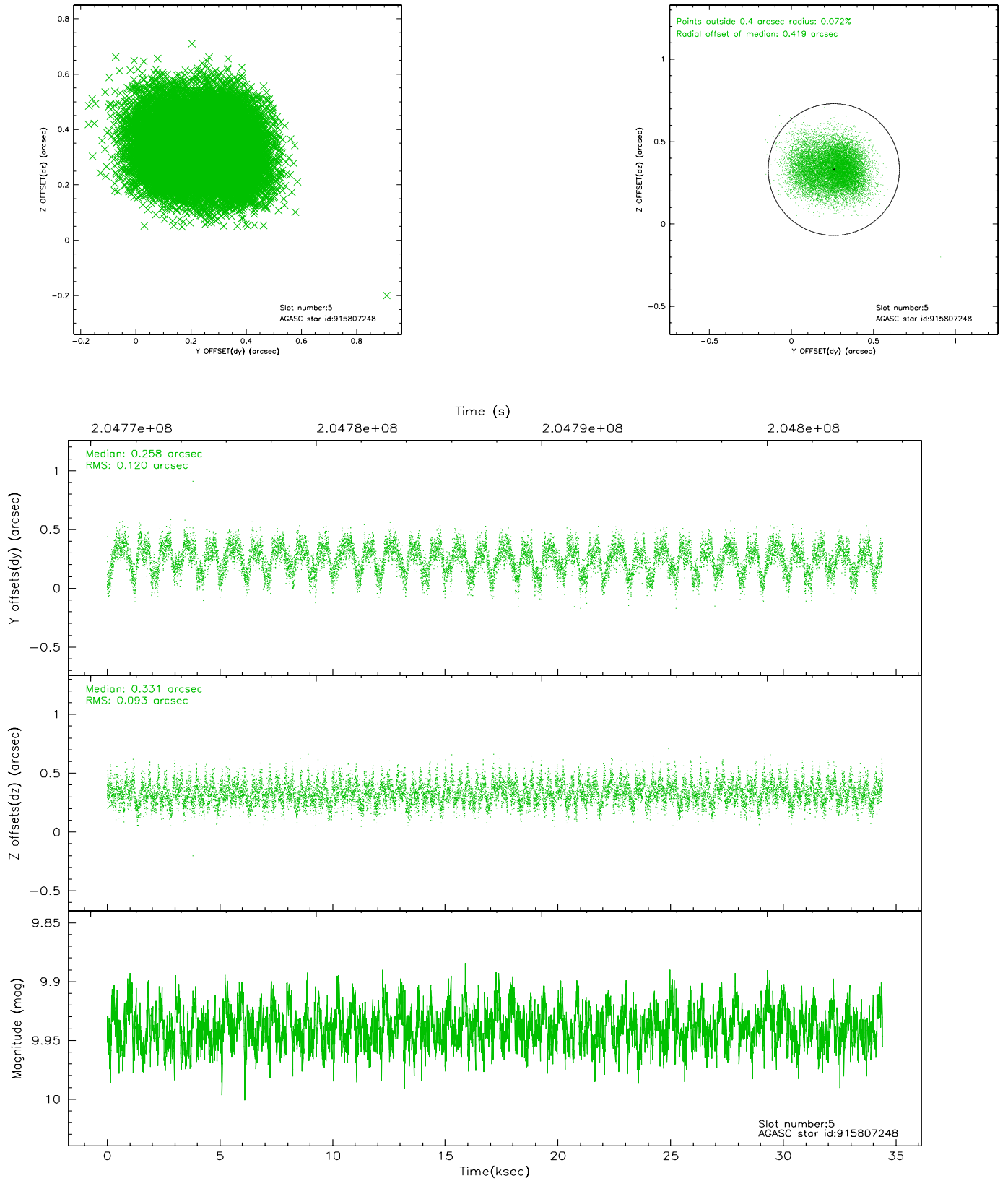
2.4.1 Slot 3



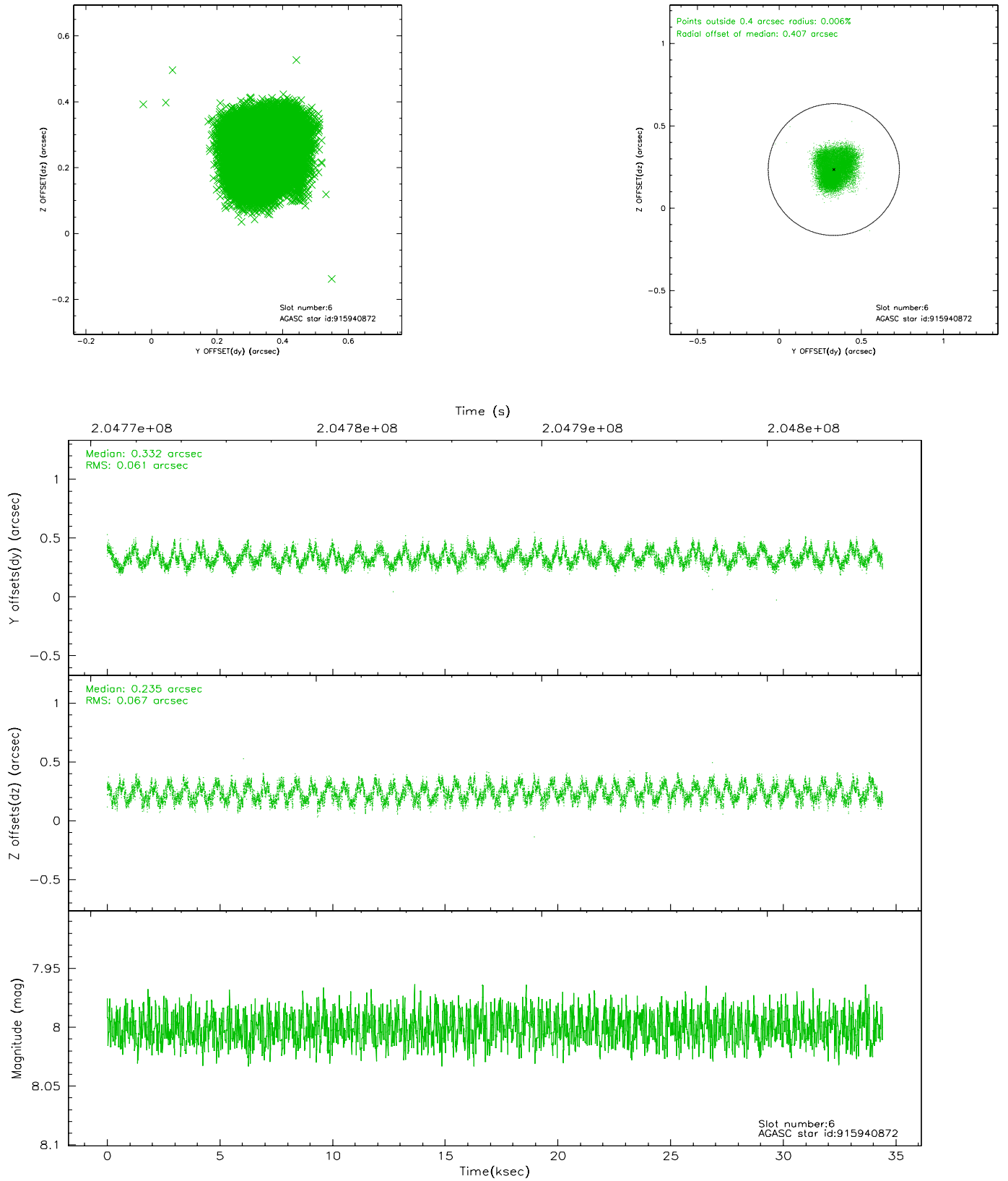
2.4.2 Slot 4



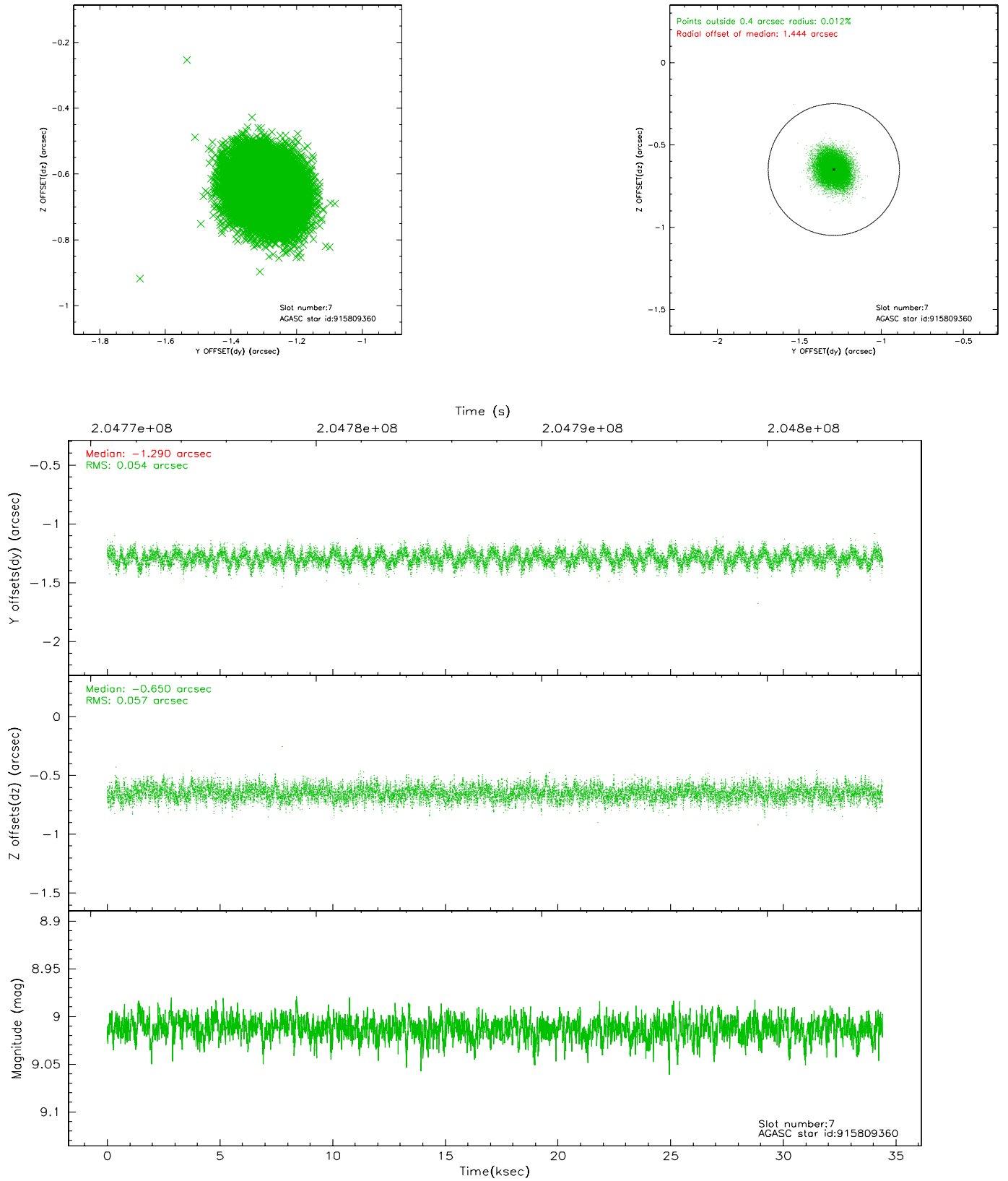
2.4.3 Slot 5



2.4.4 Slot 6

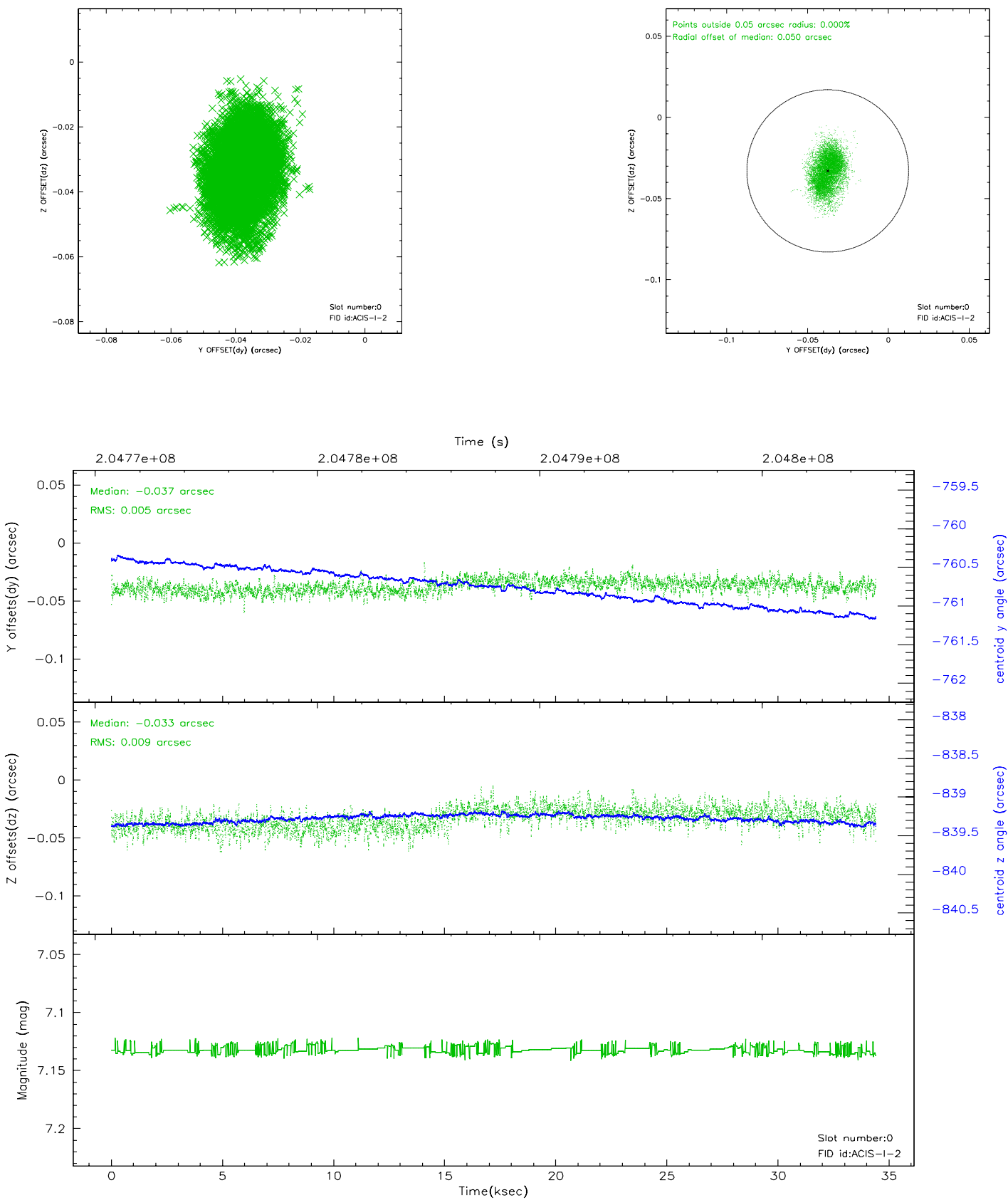


2.4.5 Slot 7

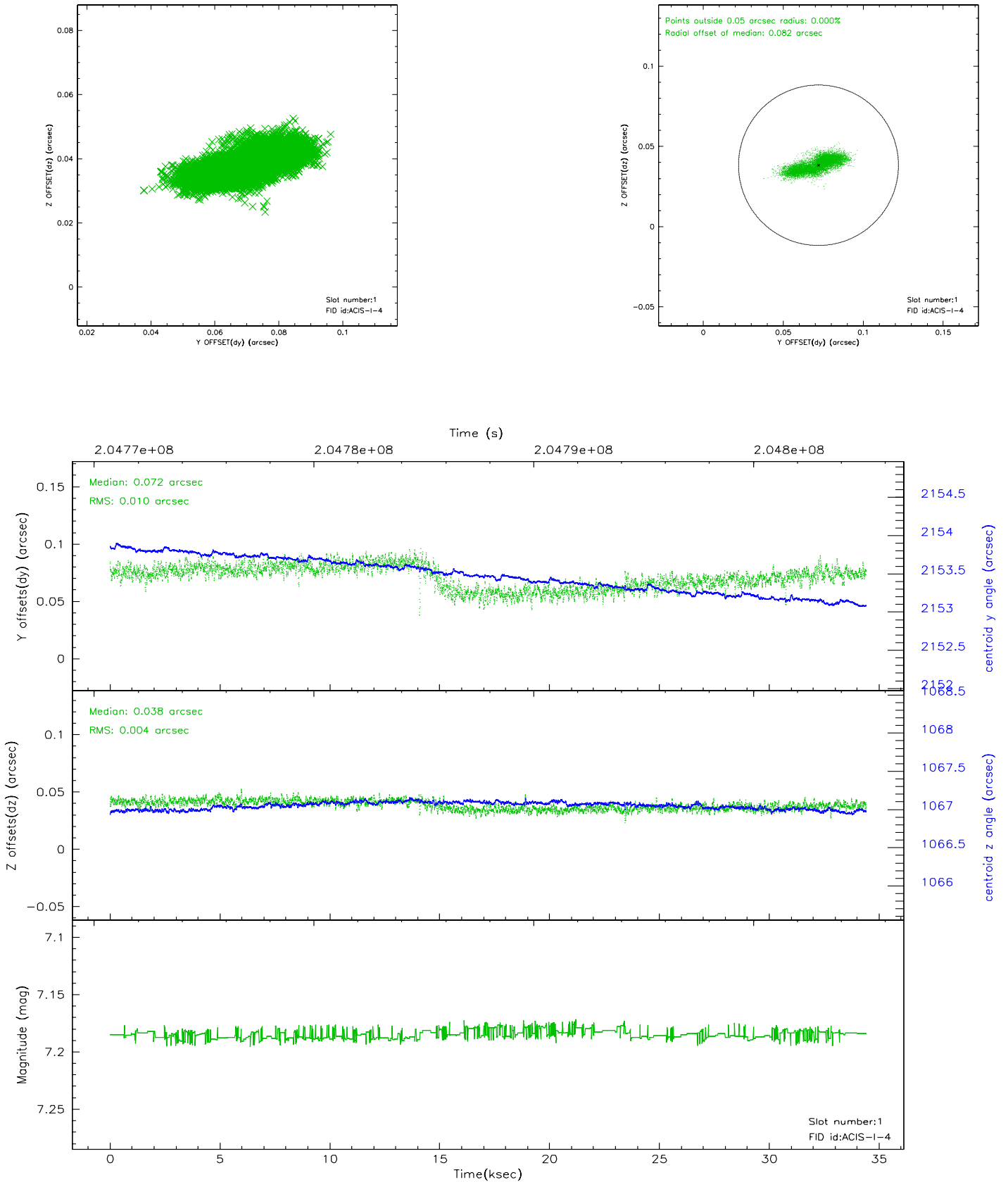


2.5 FID Slots

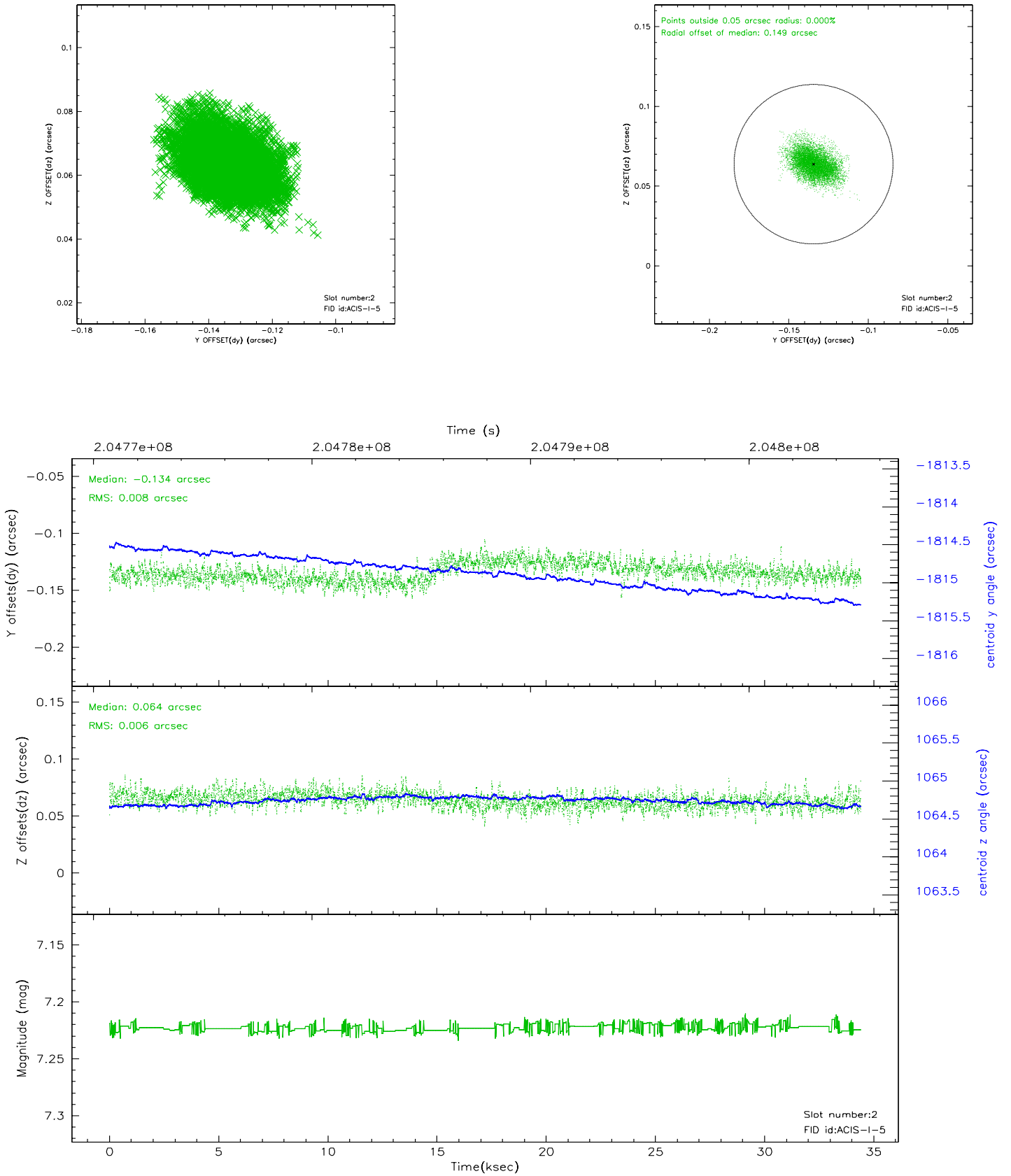
2.5.1 Slot 0



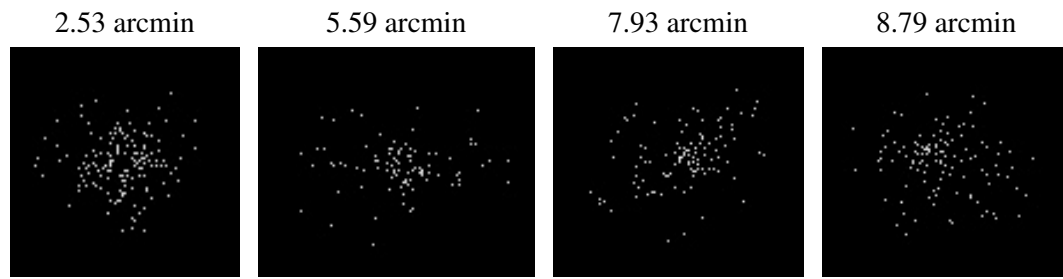
2.5.2 Slot 1



2.5.3 Slot 2



3 Point Sources



A Summary

A.1 Status

V&V Scientist	Joy Nichols
V&V Date (YYYY-MM-DD)	2006.06.06
V&V Edition	1
V&V Disposition and Status	OK
V&V Charge Time	33.972

A.2 Comments