

V&V Reference Report

L2 ASCDS Version : 8.5.1.1

Observation 4882 - L2 Version 5
Chandra X-Ray Center

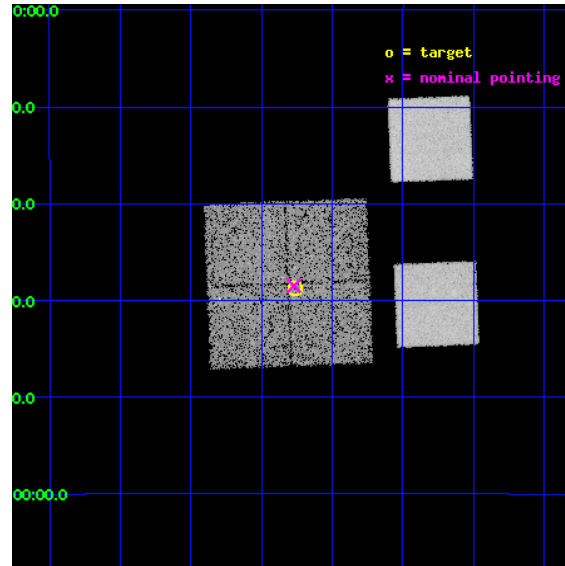
L2 Processing Date : Feb 11 2013

Contents

1	Front	2
2	OBI	3
2.1	OBI	3
2.1.1	Images	3
2.1.2	Bias	3
2.1.3	Parameters	4
2.1.4	Events	4
2.2	Compared Parameters	5
2.3	Aspect	6
2.4	Star Slots	9
2.4.1	Slot 3	9
2.4.2	Slot 4	10
2.4.3	Slot 5	11
2.4.4	Slot 6	12
2.4.5	Slot 7	13
2.5	FID Slots	14
2.5.1	Slot 0	14
2.5.2	Slot 1	15
2.5.3	Slot 2	16
A	Summary	17
A.1	Status	17
A.2	Comments	17

1 Front

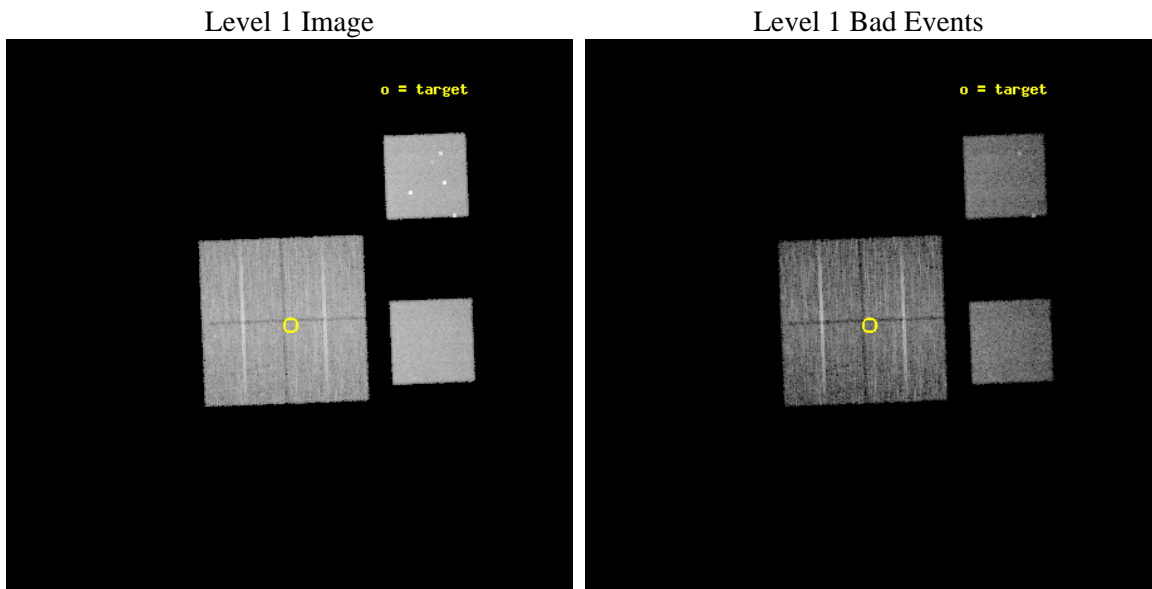
seq_num	700964	Sequence number
obs_id	4882	Observation id
title	AGN in low-redshift Clusters of Galaxies	Proposal title
observer	Prof. Paul Martini	Principal investigator
object	Abell85-P2	Source name
dtcycle	0	
cycle	P	events from which exps? Prim/Second/Both
ra_targ	10.440833	Observer's specified target RA [deg]
dec_targ	-9.645833	Observer's specified target Dec [deg]
ra_nom	10.442796288703	Nominal RA [deg]
dec_nom	-9.6416459284389	Nominal Dec [deg]
roll_nom	87.776169213816	Nominal Roll [deg]
revision	5	Processing version of data
ontime	9753.599963665	Sum of GTIs [s]
livetime	9630.0940080123	Livetime [s]
ontime0	9750.3589534461	Sum of GTIs [s]
ontime1	9753.599963665	Sum of GTIs [s]
ontime2	9750.3589733839	Sum of GTIs [s]
ontime3	9753.599963665	Sum of GTIs [s]
ontime5	9753.599963665	Sum of GTIs [s]
ontime7	9753.599963665	Sum of GTIs [s]
l2events	119359	Number of level 2 events



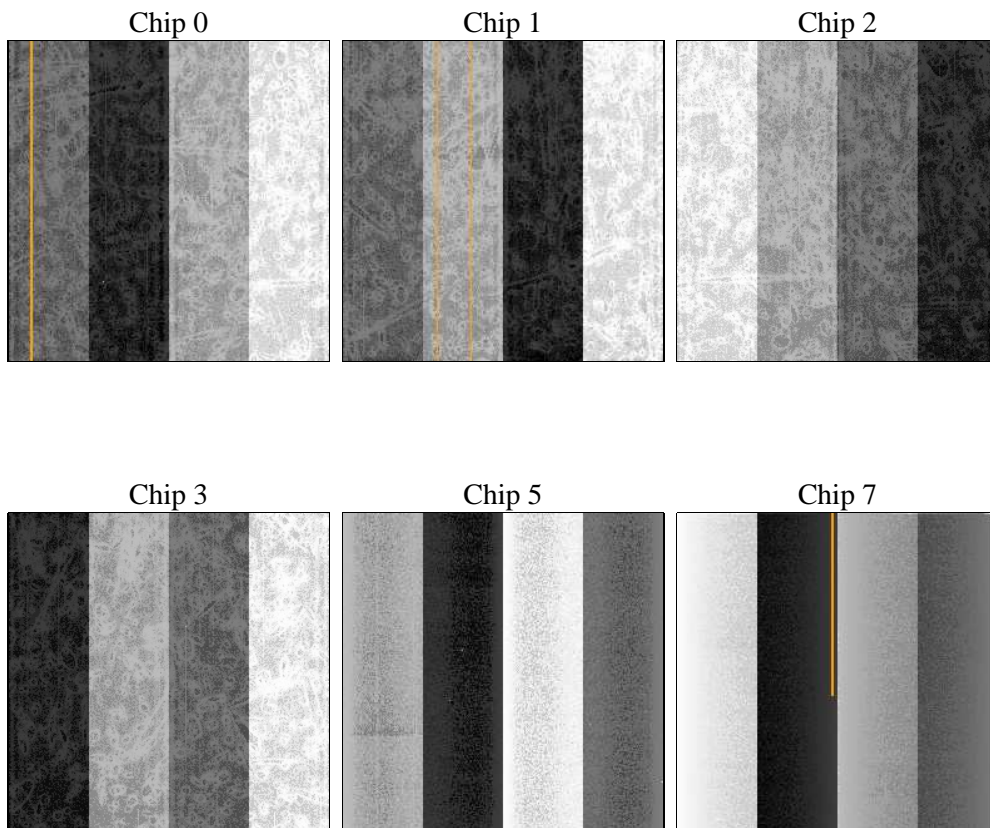
2 OBI

2.1 OBI

2.1.1 Images



2.1.2 Bias



2.1.3 Parameters

obi_num	1	Obi number	sched_exp_time	10000.000000	[s] Scheduled observation exposure time
ascdsver	8.5.1.1	Processing system revision	ontime	9753.599963665	Sum of GTIs [s]
caldsver	4.5.5	 	ontime0	9750.3589534461	Sum of GTIs [s]
date	2013-02-11T22:42:45	Date and time of file creation	ontime1	9753.599963665	Sum of GTIs [s]
revision	5	Processing version of data	ontime2	9750.3589733839	Sum of GTIs [s]
			ontime3	9753.599963665	Sum of GTIs [s]
			ontime5	9753.599963665	Sum of GTIs [s]
			ontime7	9753.599963665	Sum of GTIs [s]
			l1events	500791	Number of level 1 events

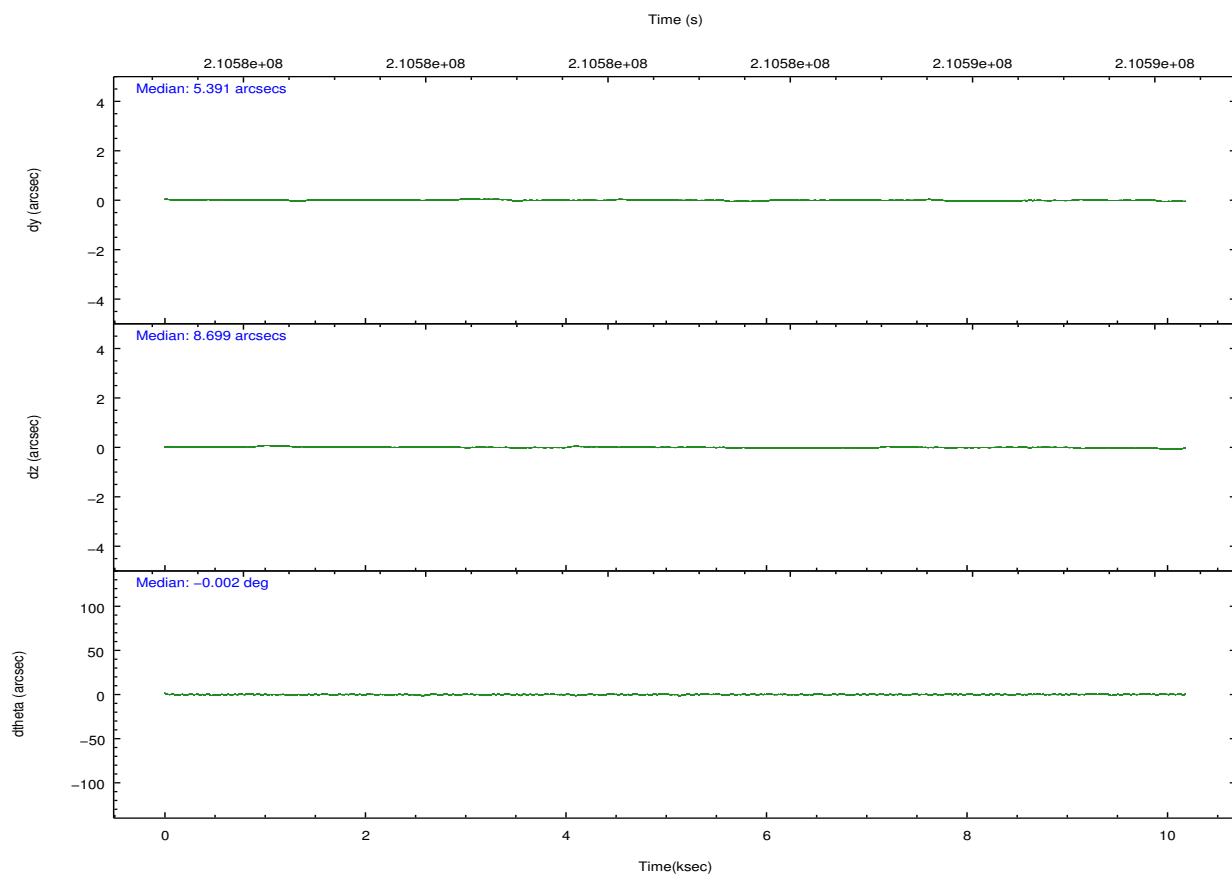
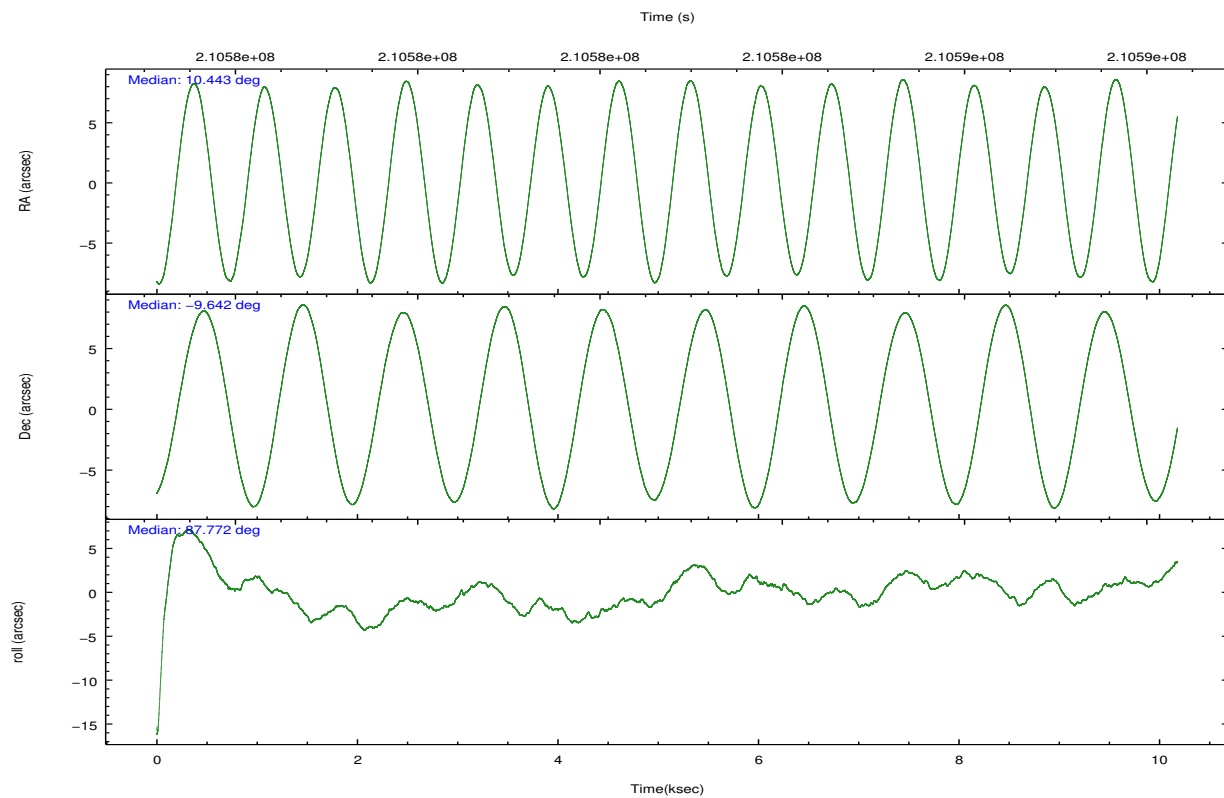
2.1.4 Events

	ccd 0	ccd 1	ccd 2	ccd 3	ccd 5	ccd 7		ccd 0	ccd 1	ccd 2	ccd 3	ccd 5	ccd 7
level 1 events	73177	67439	75987	71662	113662	98864	grade 0 events	5009	3950	4542	3854	9157	3737
rejected events	62739	57945	66442	63016	59412	57810		6%	5%	5%	5%	8%	3%
rejected %	85%	85%	87%	87%	52%	58%	grade 1 events	46	41	41	35	245	90
								0%	0%	0%	0%	0%	0%
							grade 2 events	2058	2008	1896	1660	15017	8201
								2%	2%	2%	2%	13%	8%
							grade 3 events	920	917	819	851	2027	3658
								1%	1%	1%	1%	1%	3%
							grade 4 events	855	867	840	821	1852	3674
								1%	1%	1%	1%	1%	3%
							grade 5 events	3068	3075	2955	3314	8173	9352
								4%	4%	3%	4%	7%	9%
							grade 6 events	1603	1759	1455	1462	26225	21813
								2%	2%	1%	2%	23%	22%
							grade 7 events	59618	54822	63439	59665	50966	48339
								81%	81%	83%	83%	44%	48%

2.2 Compared Parameters

Parameter	Planned	Actual	Parameter	Planned	Actual
Instrument	ACIS	ACIS	Obspar format version number	7	7
Detector	ACIS-012357	ACIS-012357	Obspar file type	PREDICTED	ACTUAL
Grating	NONE	NONE	Obspar update status	NONE	UPDATED
Data mode	VFAINT	VFAINT	Number of optional ACIS chips dropped	0	0
Observation mode	POINTING	POINTING	On-chip summing requested	N	N
[deg] Pointing RA	10.455877	10.44279628870332	Subarray requested	NONE	NONE
[deg] Pointing Dec	-9.665819	-9.641645928438871	Alternating exposures requested	N	N
[deg] Pointing Roll	87.569672	87.77616921381622	[s] Primary exposure time	0.000000	3.2
[mm] SIM focus pos	-0.782348	-0.7809083437167272			
[mm] SIM defocus	0	0.001439871863259334			
[mm] SIM translation stage pos	-233.592463	-233.5874344608287			
[mm] SIM translation stage offset	0	-0.005018542100998502			
[s] Observation start time (MET)	210577826.184000	210577450.77318			
Observation start date	2004-09-03T05:49:22	2004-09-03T05:44:10			
[s] Observation end time (MET)	210587826.184000	210587960.61114			
Observation end date	2004-09-03T08:36:02	2004-09-03T08:39:20			
Read mode	TIMED	TIMED			

2.3 Aspect

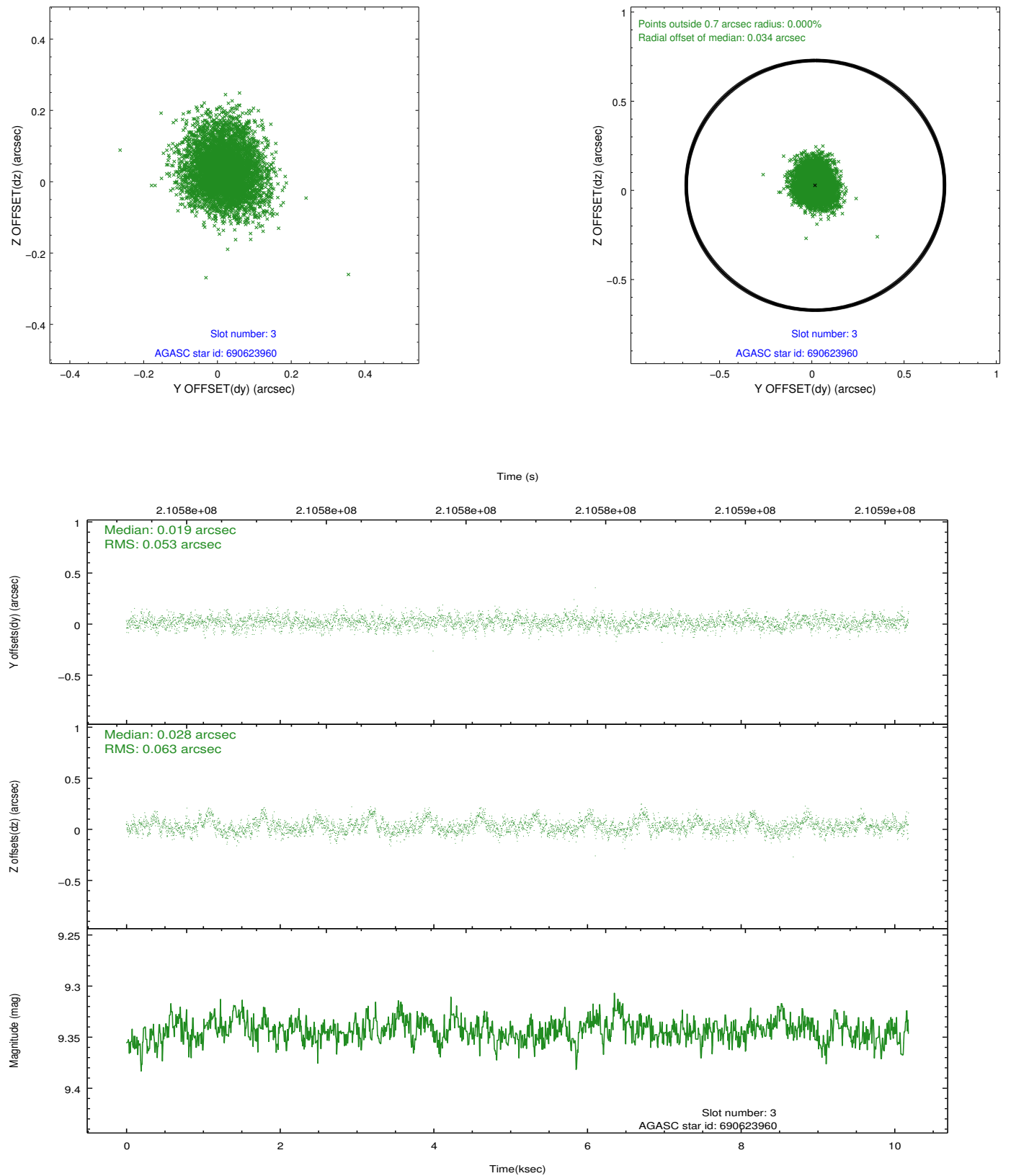


Slot Statistics

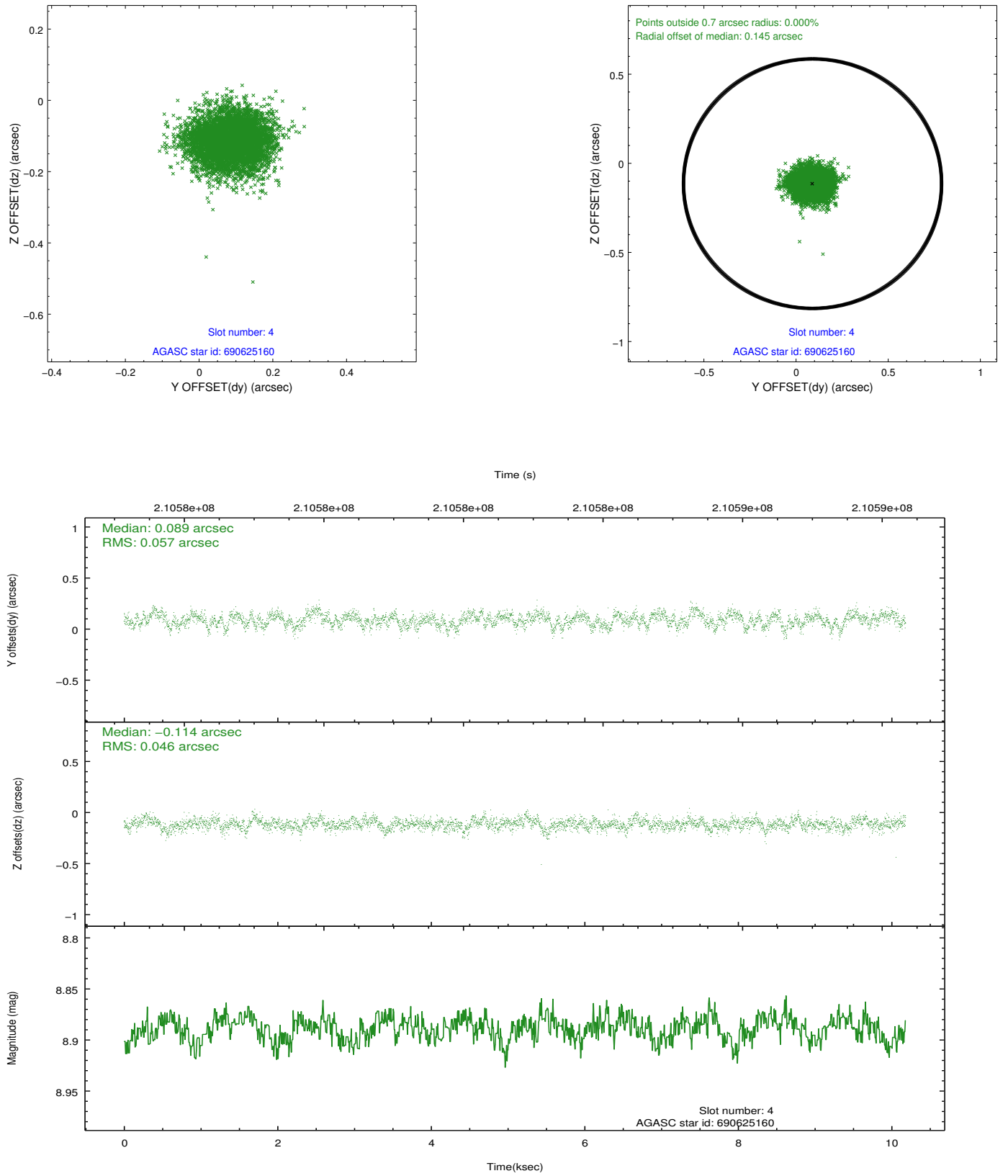
slot	status	id	mag	n_pts	med_dy	med_dz	dr1	dr2	ra	dec	mean_y	mean_z
0	FID	ACIS-I-1	7.24	2484	0.017	0.038	0.006	0.011	0.000000	0.000000	934.36	-832.09
1	FID	ACIS-I-5	7.23	2484	-0.169	0.042	0.006	0.010	0.000000	0.000000	-1813.66	1065.13
2	FID	ACIS-I-6	7.25	2484	0.061	-0.010	0.007	0.011	0.000000	0.000000	399.37	1710.18
3	GUIDE	690623960	9.34	4965	0.019	0.028	0.087	0.142	10.570675	-9.168103	1807.92	-331.32
4	GUIDE	690625160	8.89	4963	0.089	-0.114	0.078	0.126	10.224219	-9.960066	-1092.65	775.52
5	GUIDE	690625776	9.15	4964	-0.027	0.006	0.074	0.121	10.846019	-9.315741	1317.75	-1332.56
6	GUIDE	690636928	9.24	4962	-0.088	0.118	0.106	0.185	11.054156	-9.568424	439.29	-2107.22
7	GUIDE	690637960	6.81	4967	0.008	-0.037	0.061	0.096	10.711431	-9.921690	-881.74	-944.87

2.4 Star Slots

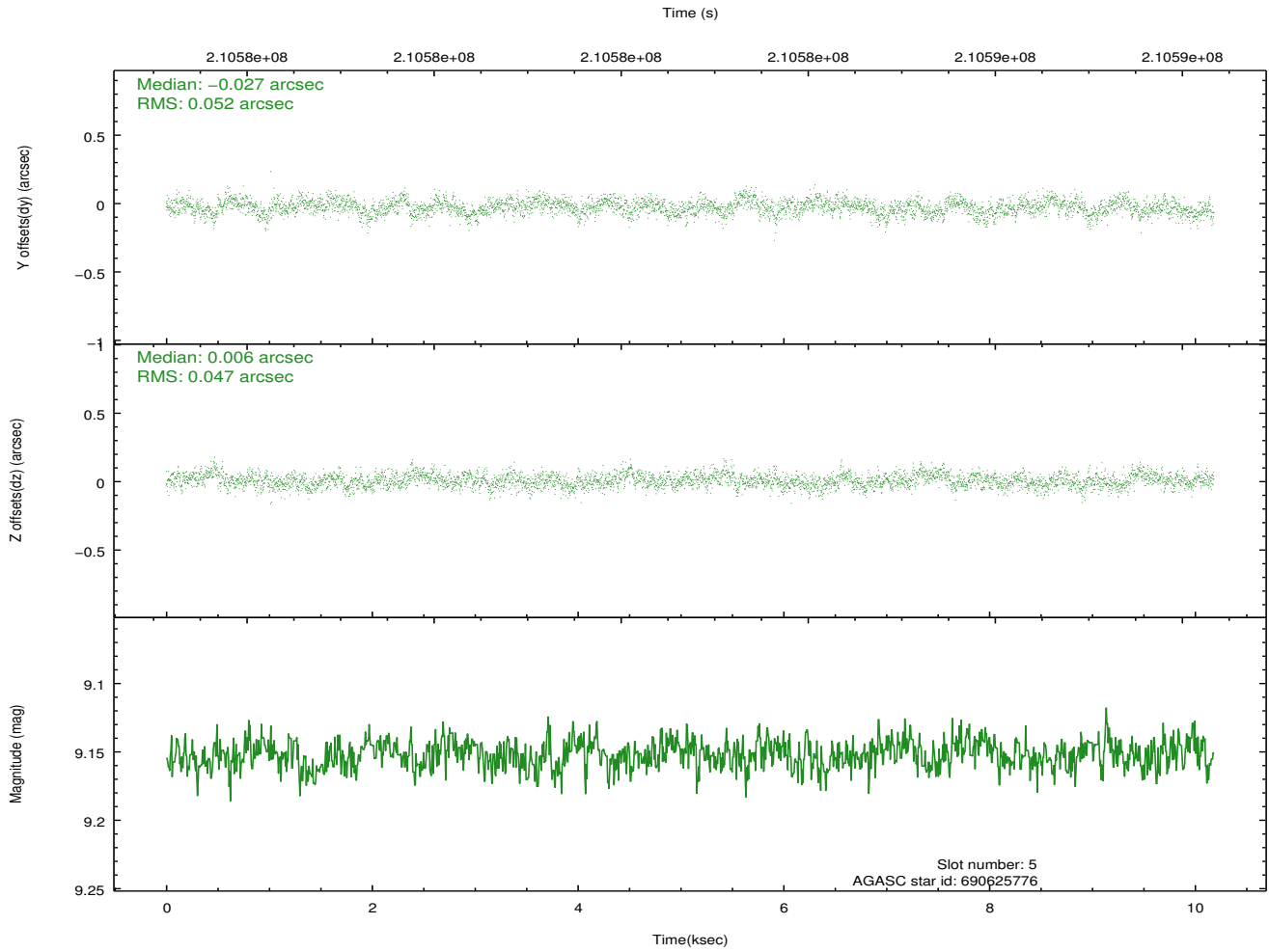
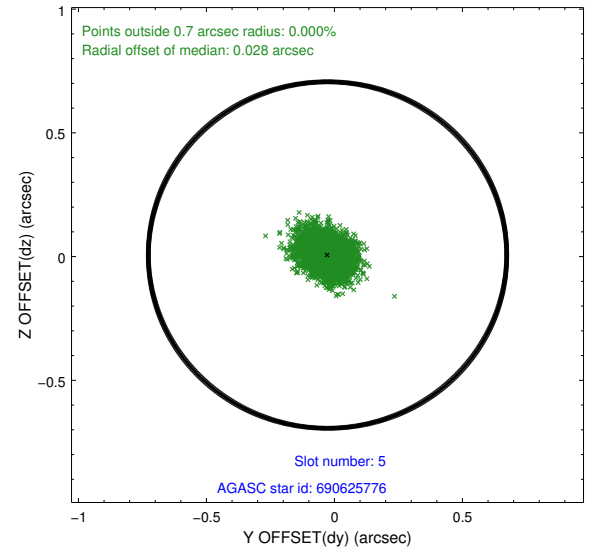
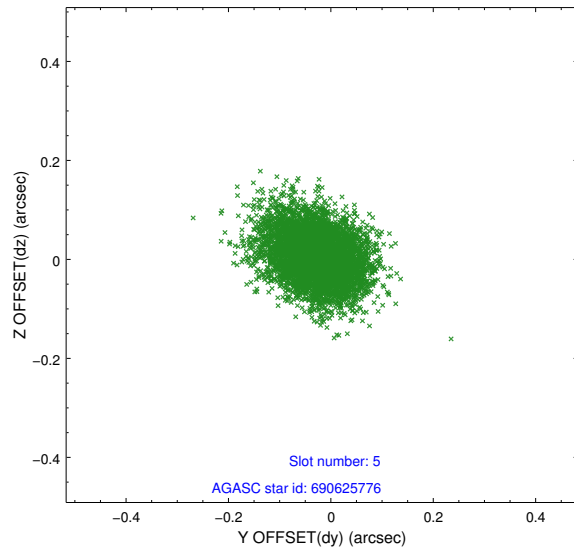
2.4.1 Slot 3



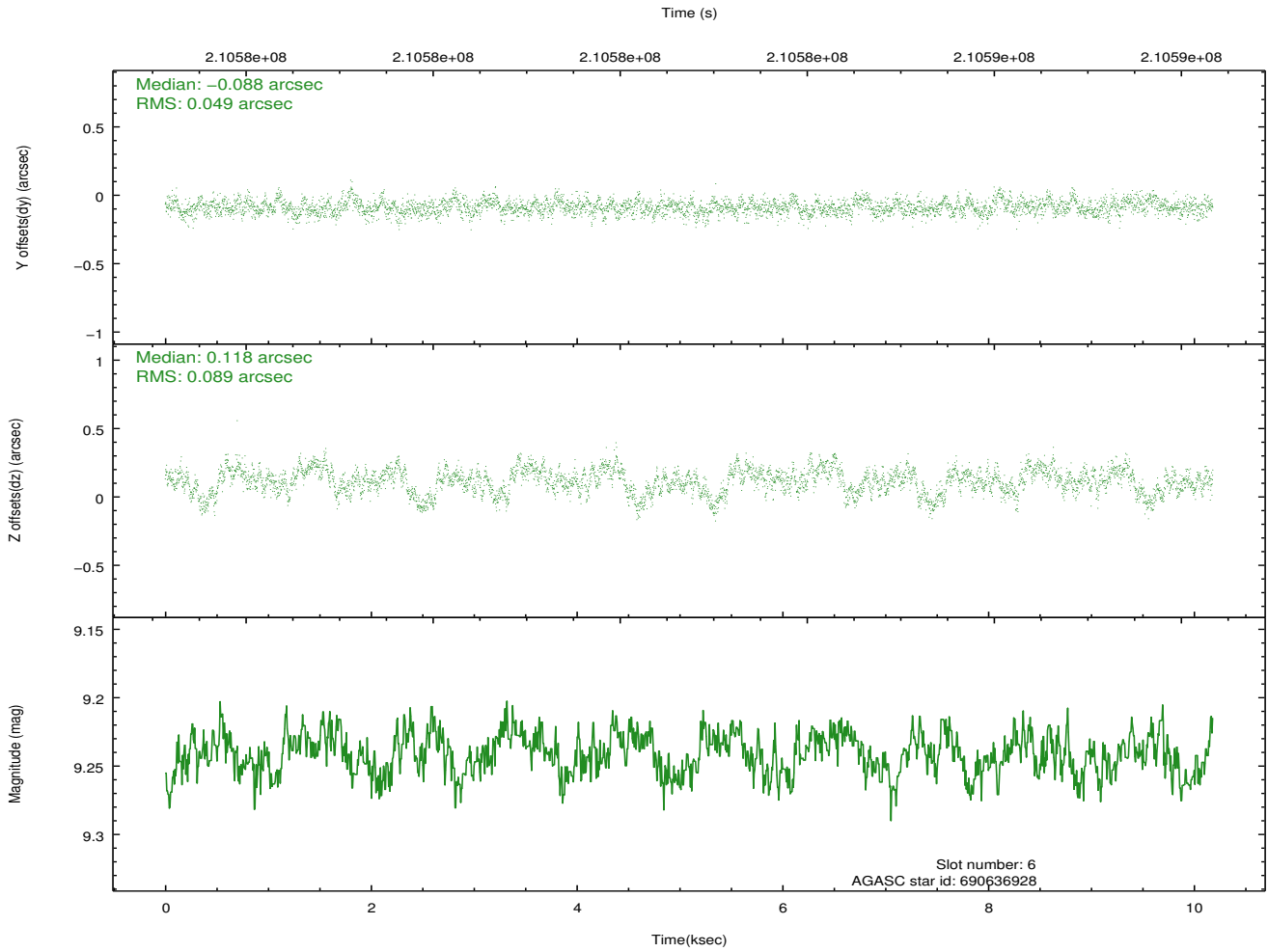
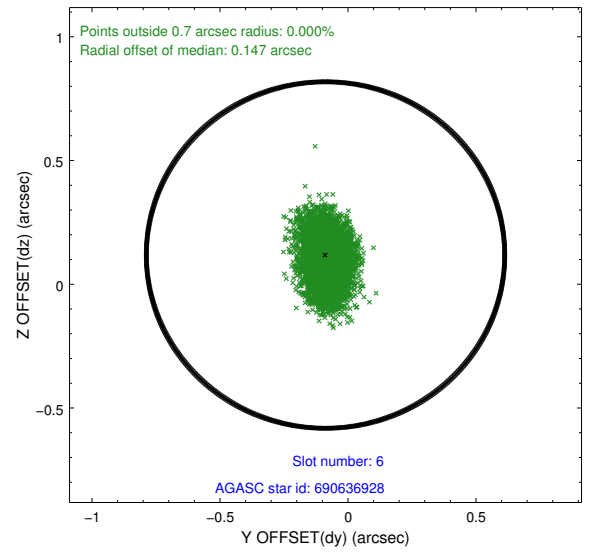
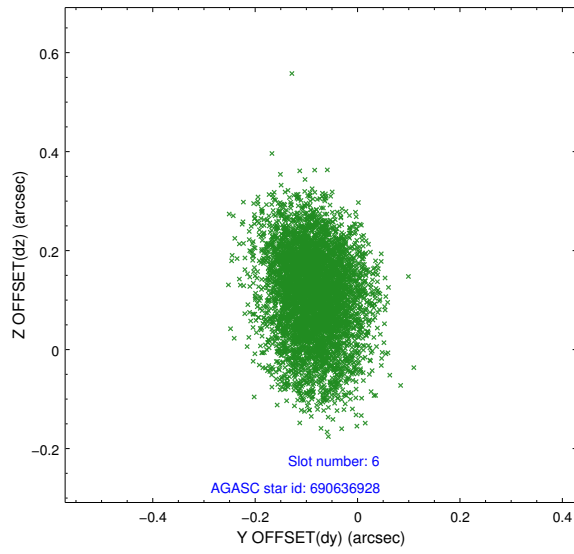
2.4.2 Slot 4



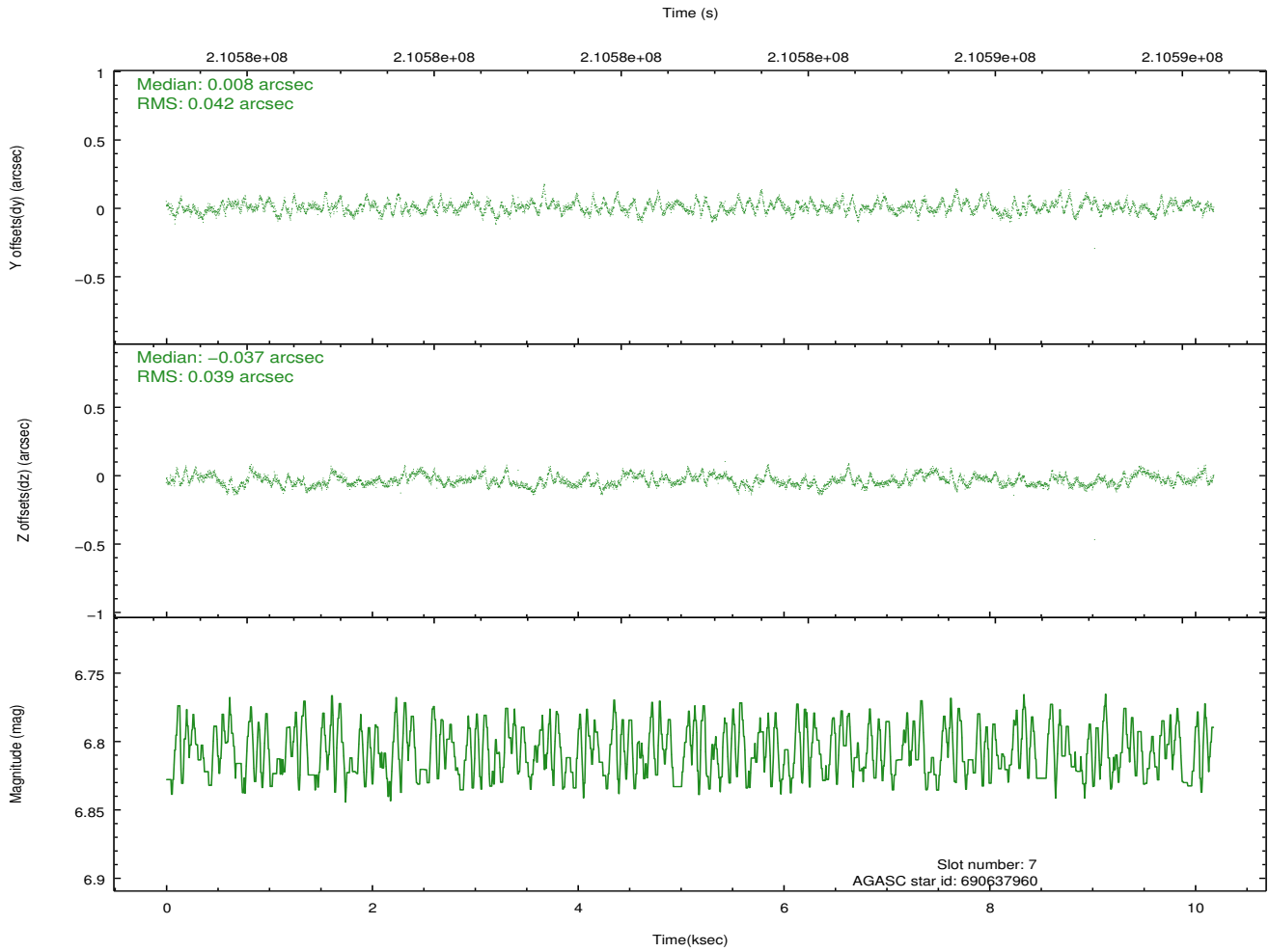
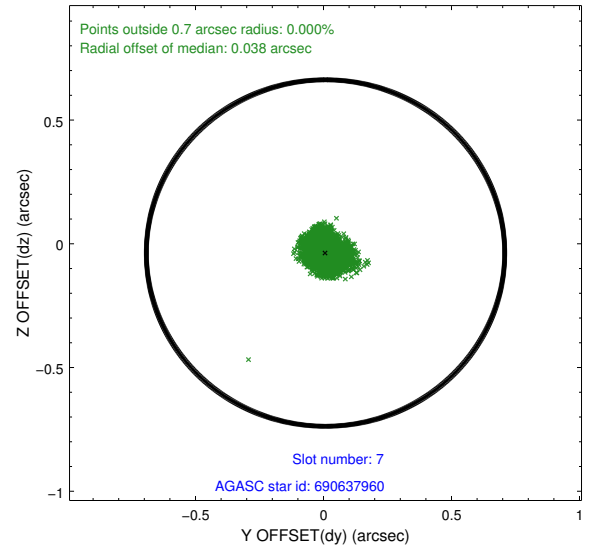
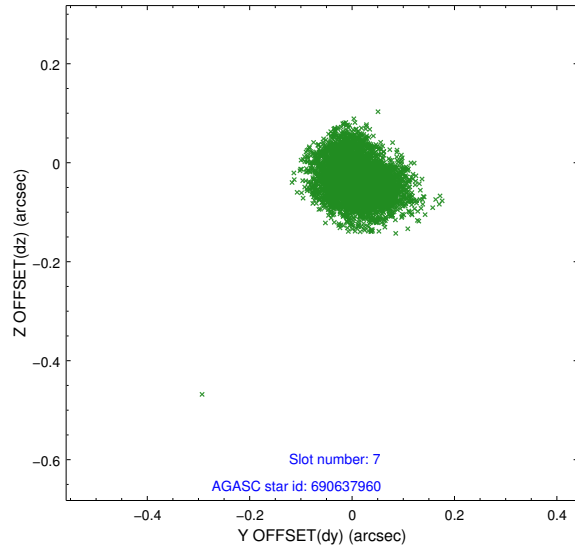
2.4.3 Slot 5



2.4.4 Slot 6

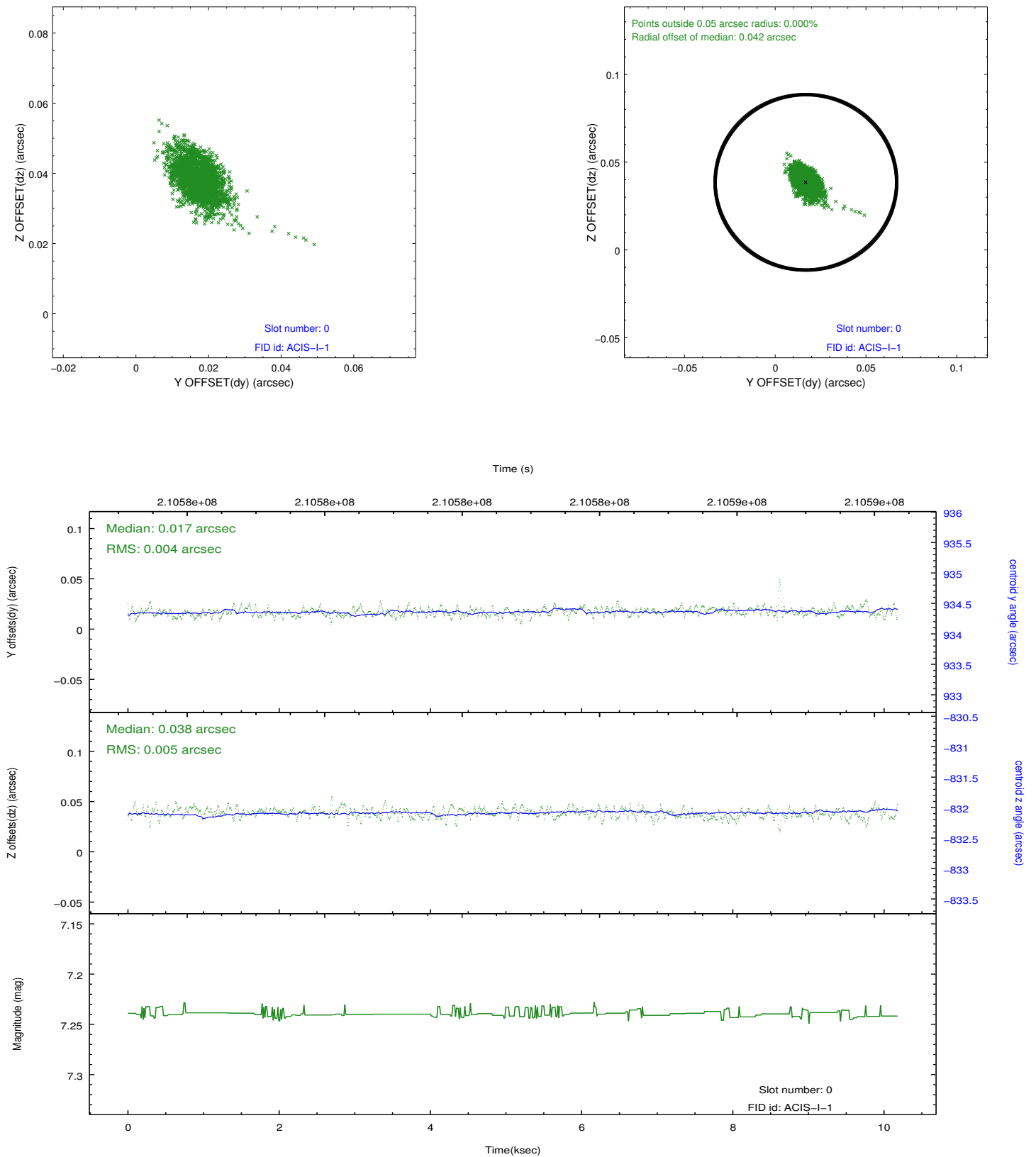


2.4.5 Slot 7

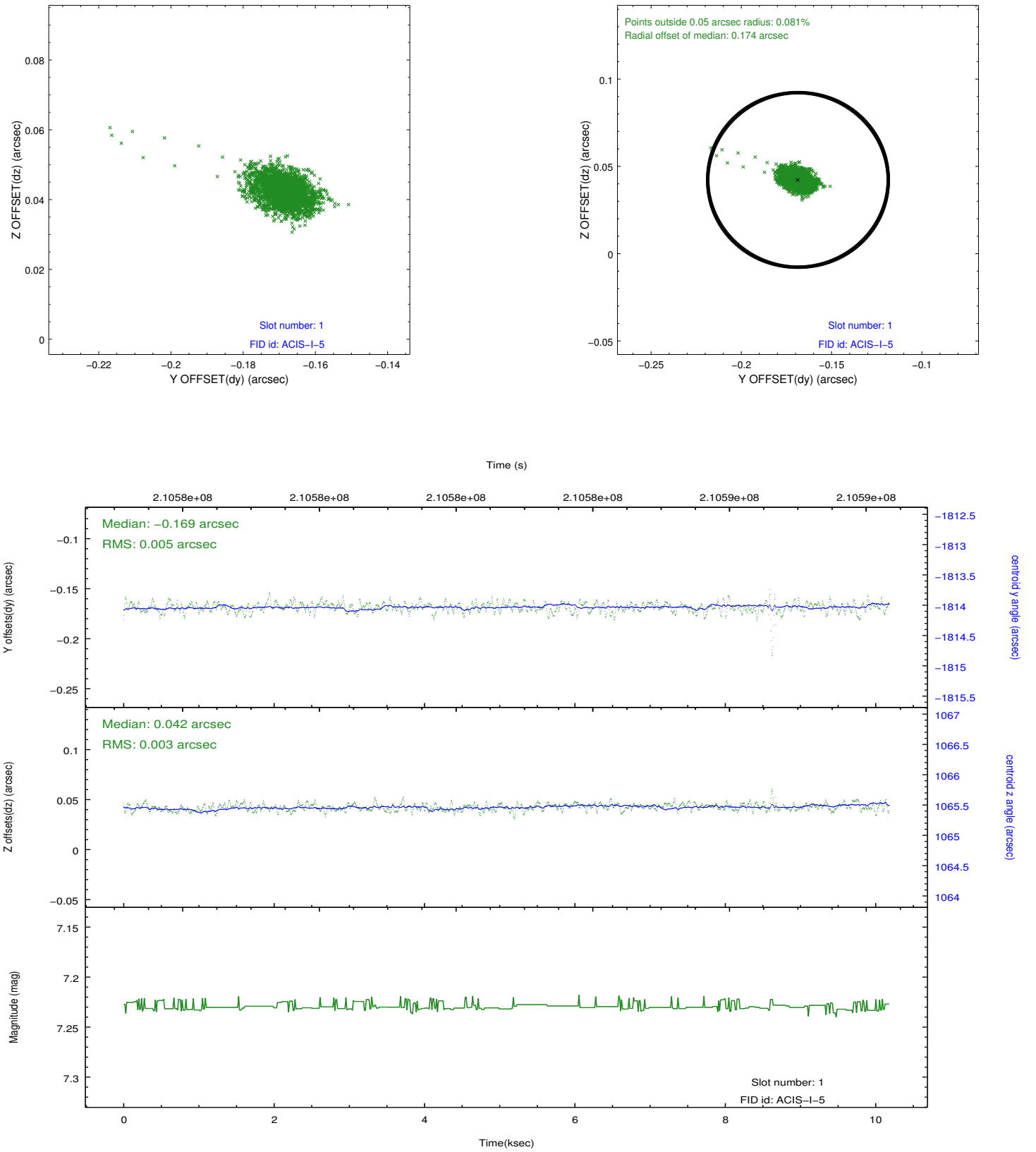


2.5 FID Slots

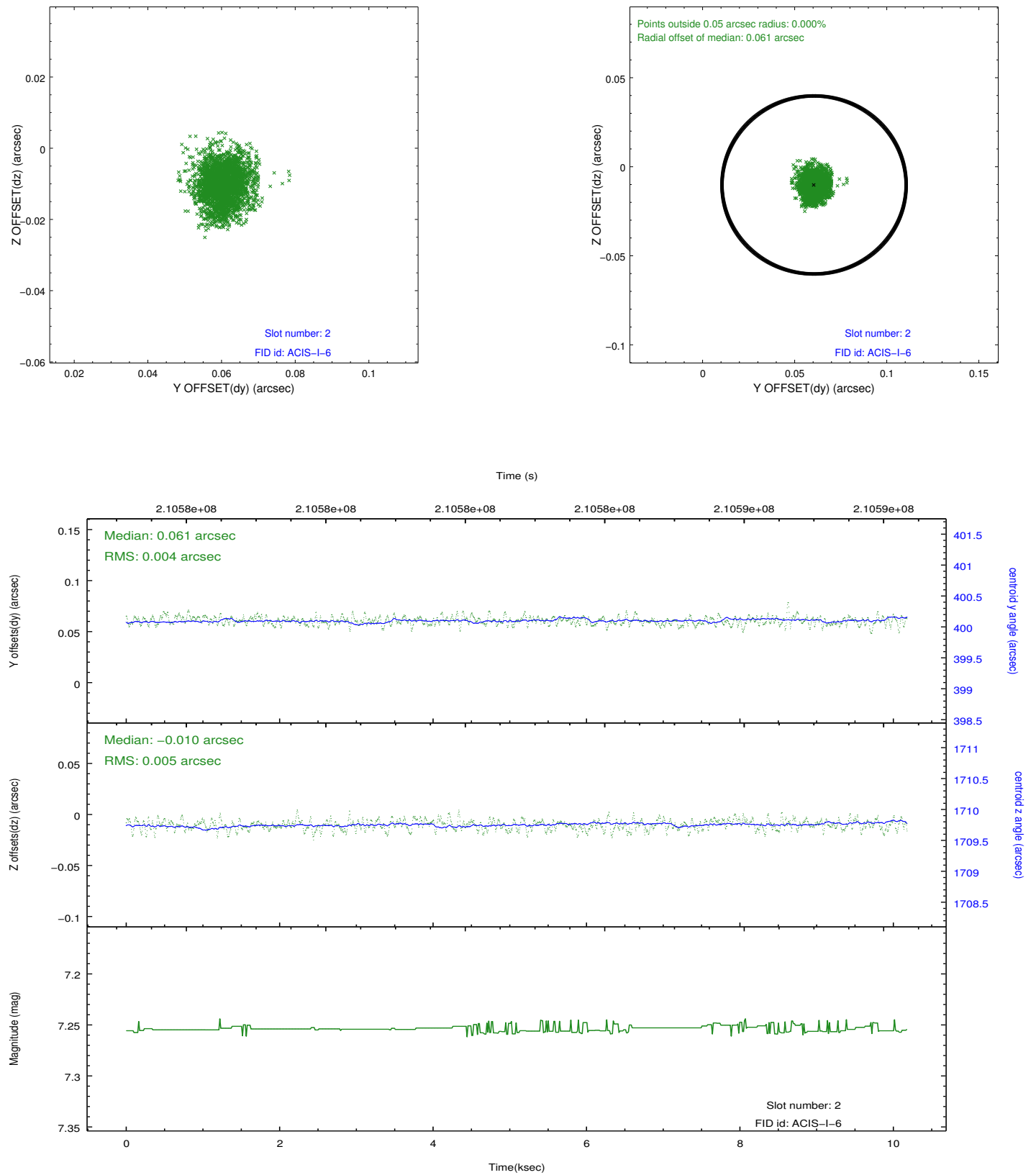
2.5.1 Slot 0



2.5.2 Slot 1



2.5.3 Slot 2



A Summary

A.1 Status

V&V Scientist	Jen Lauer
V&V Date (YYYY-MM-DD)	2013.02.12
V&V Edition	1
V&V Disposition and Status	OK
V&V Charge Time	9.753

A.2 Comments

A spatial region of the original bias map for CCD = 1 suffered from anomalously high data values. Pixels in the event data that were bias-corrected by one of the original affected bias pixels may have an apparent energy shift. While the change in energy is expected to be small (~ 20 eV), it depends on many parameters that have not yet been fully explored for this bias anomaly. The bias map for CCD = 1 has been reconstructed for this processing to remove this anomaly using scaled data from a comparable bias map from another observation. The pixels affected by the anomaly are bounded by sky coords:
(10.53958,-9.78227),(10.54387,-9.78243),(10.54530,-9.74550),(10.54102,-9.74535)