

V&V Reference Report

L2 ASCDS Version : 8.4.5

Observation 4822 - L2 Version 3
Chandra X-Ray Center

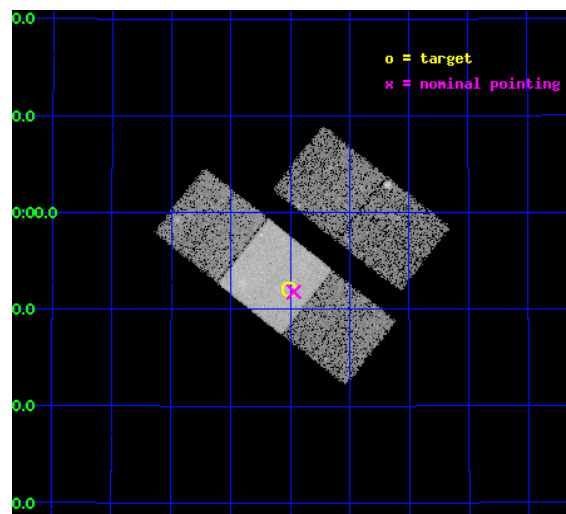
L2 Processing Date : Dec 2 2012

Contents

1	Front	2
2	OBI	3
2.1	OBI	3
2.1.1	Images	3
2.1.2	Bias	3
2.1.3	Parameters	4
2.1.4	Events	4
2.2	Compared Parameters	5
2.3	Aspect	6
2.4	Star Slots	9
2.4.1	Slot 3	9
2.4.2	Slot 4	10
2.4.3	Slot 5	11
2.4.4	Slot 6	12
2.4.5	Slot 7	13
2.5	FID Slots	14
2.5.1	Slot 0	14
2.5.2	Slot 1	15
2.5.3	Slot 2	16
A	Summary	17
A.1	Status	17
A.2	Comments	17

1 Front

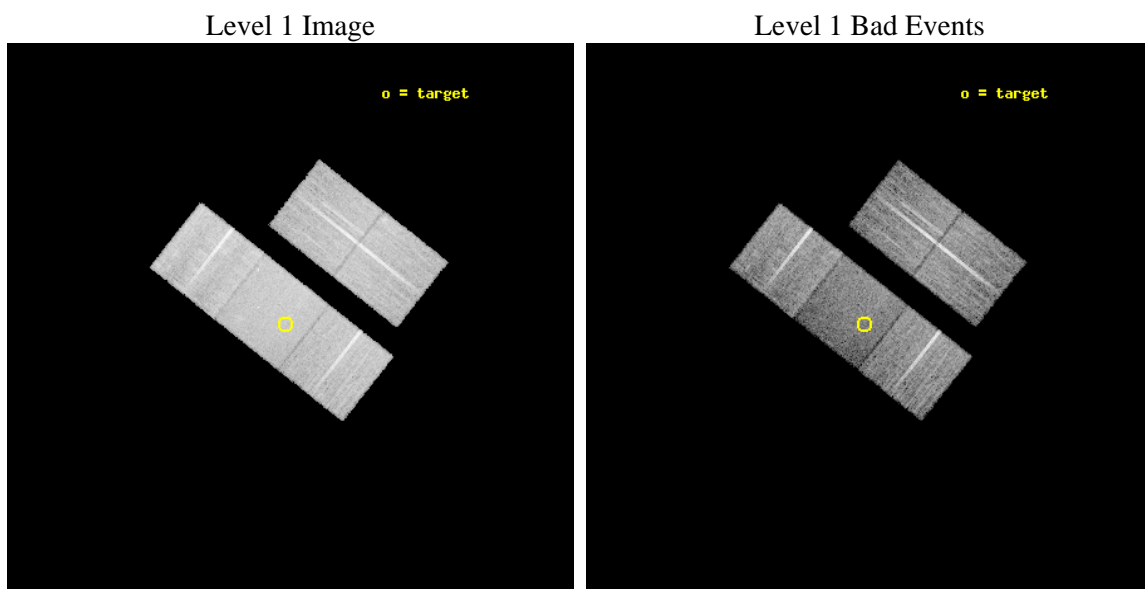
seq_num	700904	Sequence number
obs_id	4822	Observation id
title	Destroying Degeneracy: Spanning the Luminosity Range for Radio-Quiet Quasars at $z=4$	Proposal title
observer	Dr. Jill Bechtold	Principal investigator
object	PC 1450+3404	Source name
dtcycle	0	
cycle	P	events from which exps? Prim/Second/Both
ra_targ	223.2525	Observer's specified target RA [deg]
dec_targ	33.868333	Observer's specified target Dec [deg]
ra_nom	223.24222420901	Nominal RA [deg]
dec_nom	33.863747052423	Nominal Dec [deg]
roll_nom	218.26370606827	Nominal Roll [deg]
revision	3	Processing version of data
ontime	15037.944727778	Sum of GTIs [s]
livetime	14841.462909136	Livetime [s]
ontime2	15034.639587522	Sum of GTIs [s]
ontime3	15031.58067736	Sum of GTIs [s]
ontime6	15037.903687775	Sum of GTIs [s]
ontime7	15037.944727778	Sum of GTIs [s]
ontime8	15037.821607769	Sum of GTIs [s]
l2events	79269	Number of level 2 events



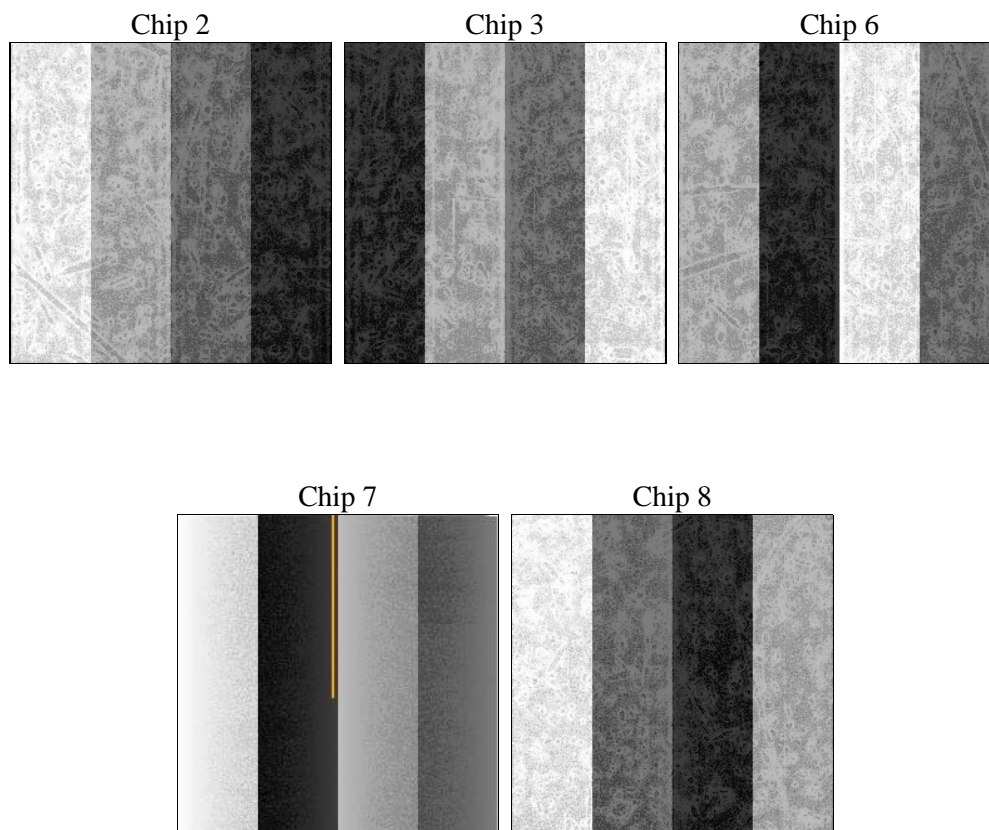
2 OBI

2.1 OBI

2.1.1 Images



2.1.2 Bias



2.1.3 Parameters

obi_num	2	Obi number	sched_exp_time	15000.000000	[s] Scheduled observation exposure time
ascdsver	8.4.5	Processing system revision	ontime	15037.944727778	Sum of GTIs [s]
caldsver	4.5.2	 	ontime2	15034.639587522	Sum of GTIs [s]
date	2012-12-03T00:55:02	Date and time of file creation	ontime3	15031.580677736	Sum of GTIs [s]
revision	3	Processing version of data	ontime6	15037.903687775	Sum of GTIs [s]
			ontime7	15037.944727778	Sum of GTIs [s]
			ontime8	15037.821607769	Sum of GTIs [s]
			l1events	495194	Number of level 1 events

2.1.4 Events

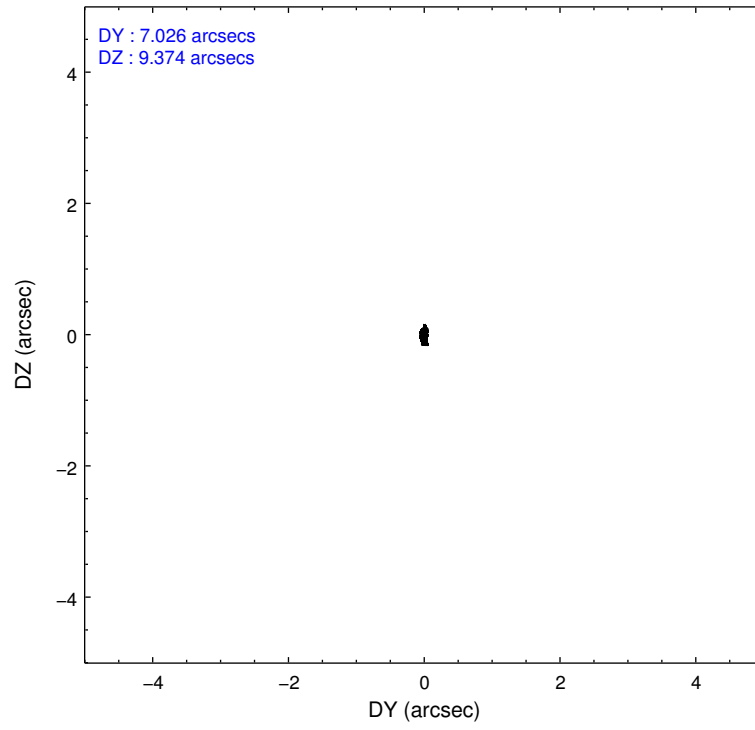
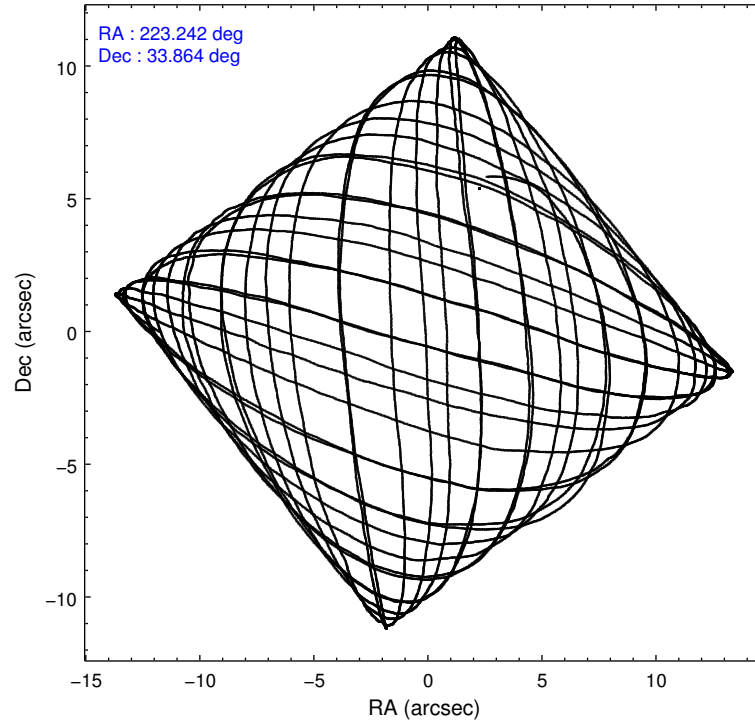
	ccd 2	ccd 3	ccd 6	ccd 7	ccd 8
level 1 events	92727	91016	92394	103007	116050
rejected events	83743	82446	82816	55616	90505
rejected %	90%	90%	89%	53%	77%

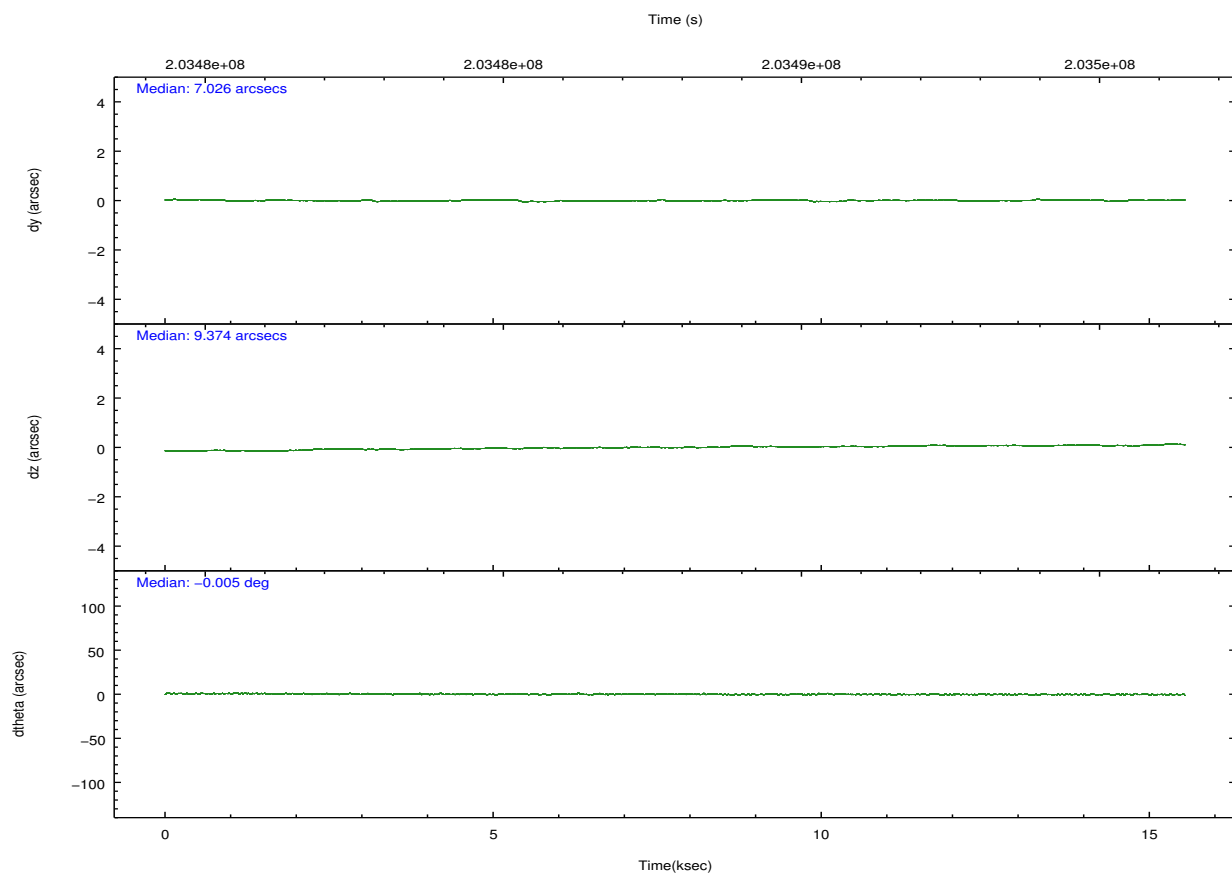
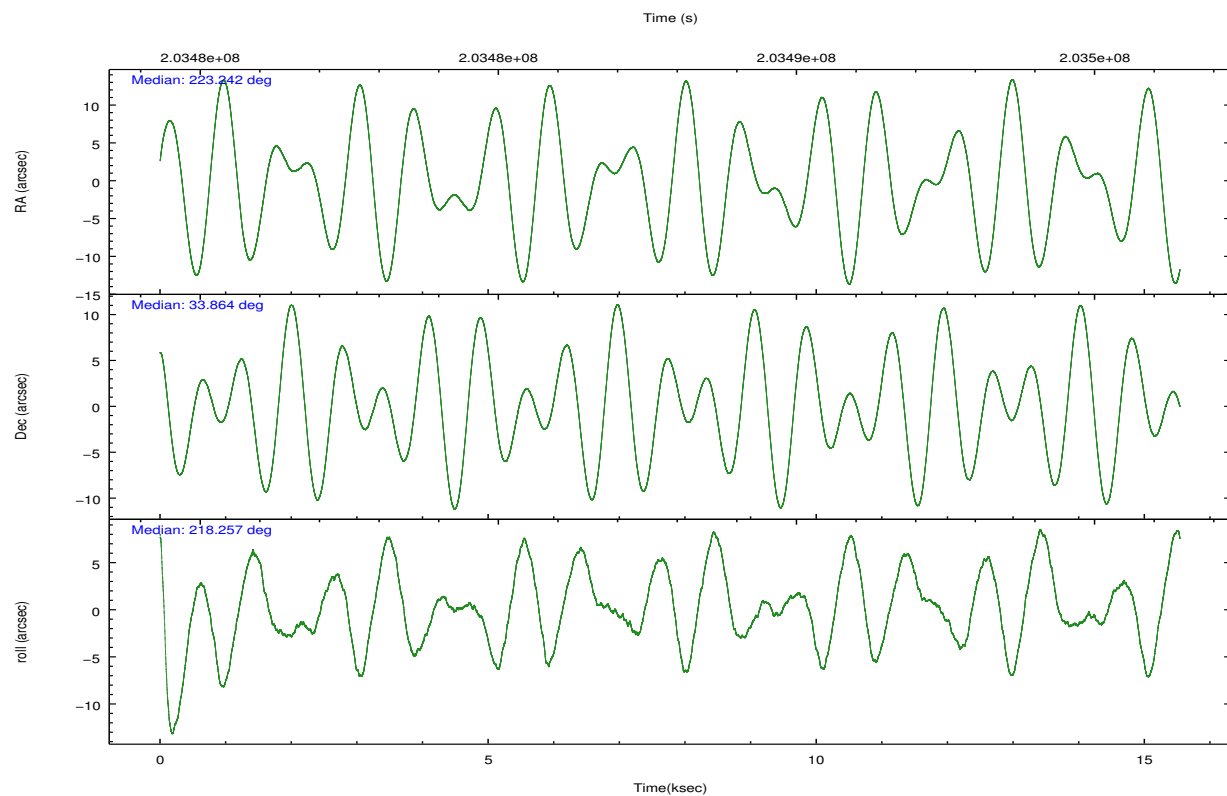
	ccd 2	ccd 3	ccd 6	ccd 7	ccd 8
grade 0 events	3512	3058	3376	4764	7714
	3%	3%	3%	4%	6%
grade 1 events	33	46	39	89	92
	0%	0%	0%	0%	0%
grade 2 events	1999	1747	2077	9696	5893
	2%	1%	2%	9%	5%
grade 3 events	951	1009	1046	4570	2587
	1%	1%	1%	4%	2%
grade 4 events	1013	1031	1067	4476	2471
	1%	1%	1%	4%	2%
grade 5 events	2955	3589	3778	10871	5274
	3%	3%	4%	10%	4%
grade 6 events	1513	1727	2013	23896	6882
	1%	1%	2%	23%	5%
grade 7 events	80751	78809	78998	44645	85137
	87%	86%	85%	43%	73%

2.2 Compared Parameters

Parameter	Planned	Actual	Parameter	Planned	Actual
Instrument	ACIS	ACIS	Obspar format version number	7	7
Detector	ACIS-23678	ACIS-23678	Obspar file type	PREDICTED	ACTUAL
Grating	NONE	NONE	Obspar update status	NONE	UPDATED
Data mode	VFAINT	VFAINT	Number of optional ACIS chips dropped	0	0
Observation mode	POINTING	POINTING	On-chip summing requested	N	N
[deg] Pointing RA	223.253963	223.2422242090129	Subarray requested	NONE	NONE
[deg] Pointing Dec	33.889194	33.86374705242269	Alternating exposures requested	N	N
[deg] Pointing Roll	218.100534	218.2637060682699	[s] Primary exposure time	0.000000	3.1
[mm] SIM focus pos	-0.684267	-0.6828225247311905			
[mm] SIM defocus	0	0.001444936568705701			
[mm] SIM translation stage pos	-190.132523	-190.1425803651734			
[mm] SIM translation stage offset	0	0.01005778216563158			
[s] Observation start time (MET)	203480654.184000	203479548.3954			
Observation start date	2004-06-13T02:23:10	2004-06-13T02:05:48			
[s] Observation end time (MET)	203495654.184000	203496466.02115			
Observation end date	2004-06-13T06:33:10	2004-06-13T06:47:46			
Read mode	TIMED	TIMED			

2.3 Aspect



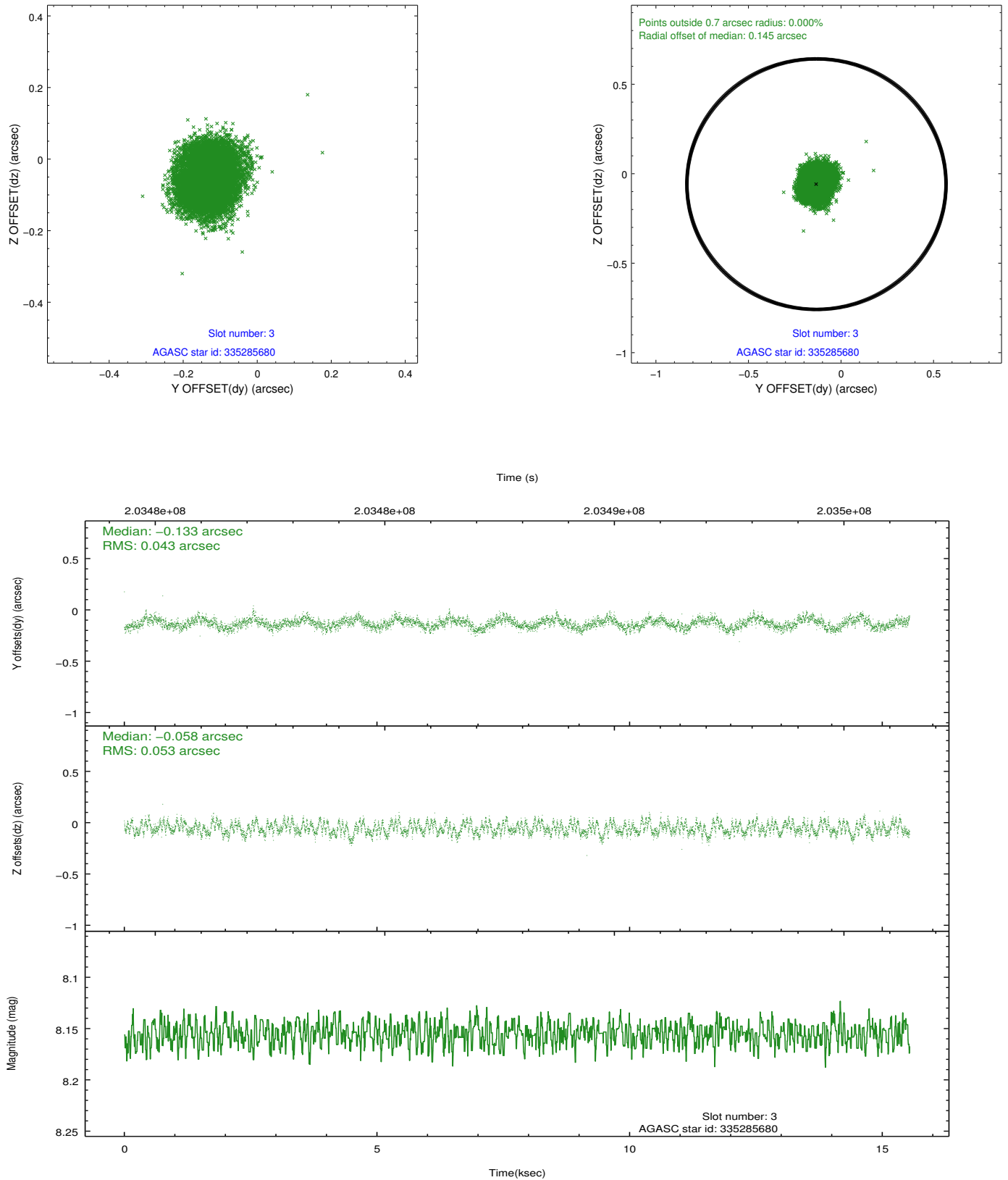


Slot Statistics

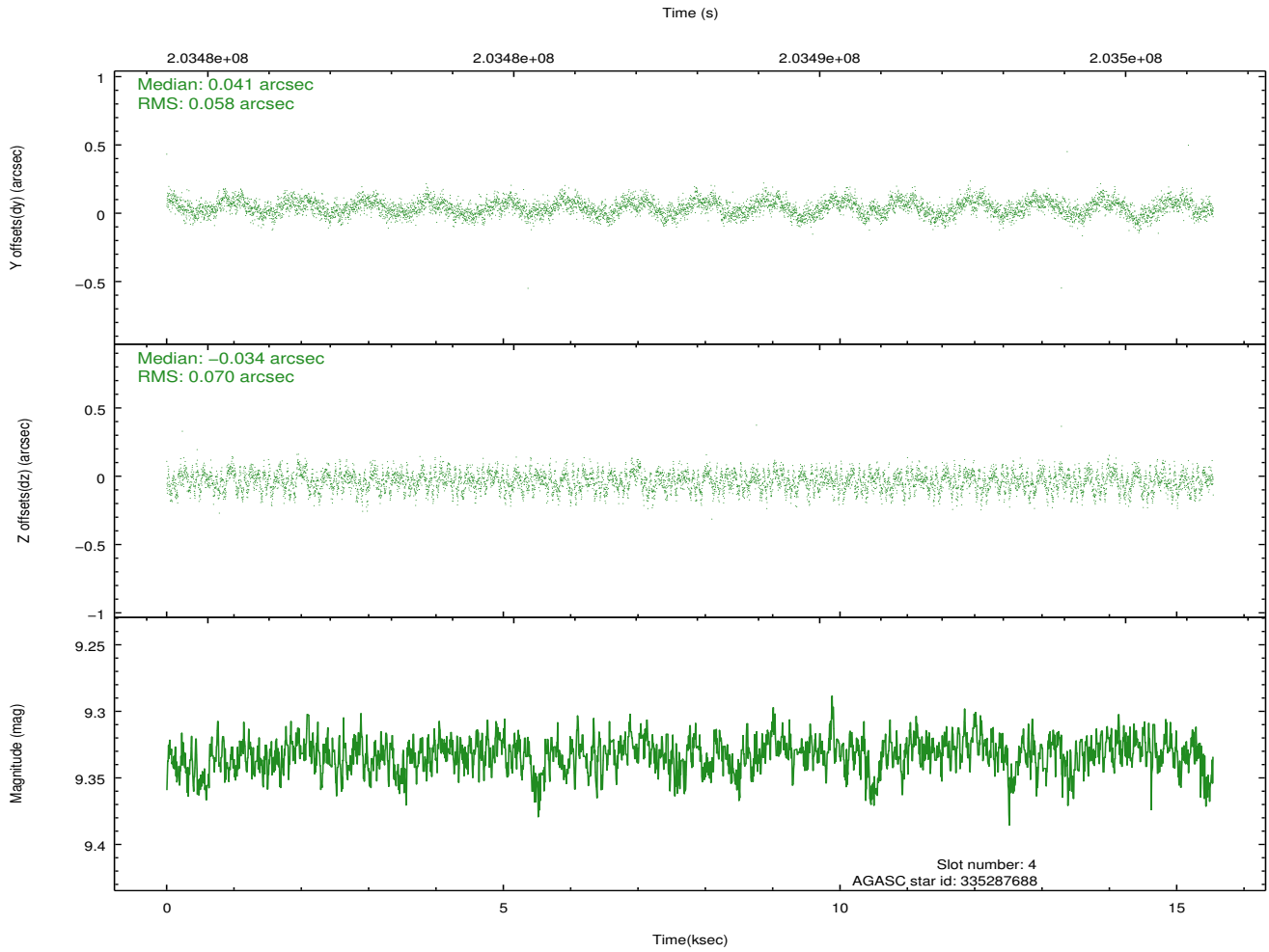
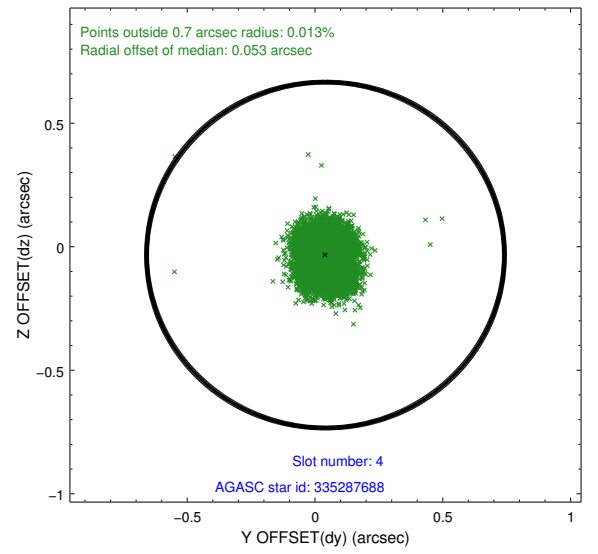
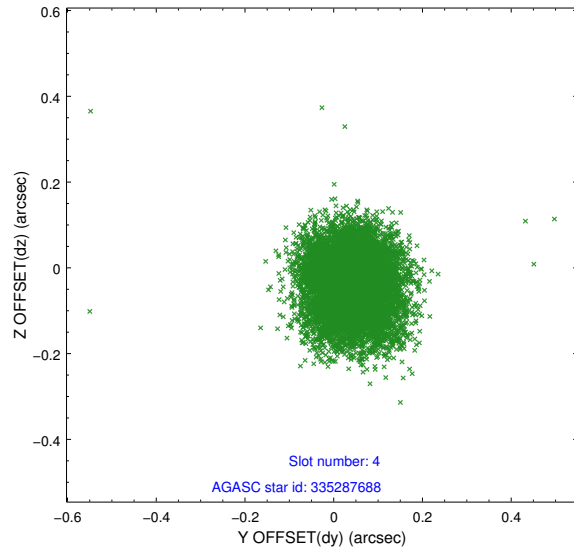
slot	status	id	mag	n_pts	med_dy	med_dz	dr1	dr2	ra	dec	mean_y	mean_z
0	FID	ACIS-S-2	7.10	3791	-0.039	-0.031	0.007	0.011	0.000000	0.000000	-759.80	-1730.58
1	FID	ACIS-S-4	7.20	3790	0.072	0.027	0.005	0.010	0.000000	0.000000	2153.44	177.70
2	FID	ACIS-S-5	7.23	3791	-0.064	0.013	0.007	0.011	0.000000	0.000000	-1812.32	171.63
3	GUIDE	335285680	8.16	7581	-0.133	-0.058	0.074	0.113	223.639410	34.411244	-2061.80	-774.33
4	GUIDE	335287688	9.33	7576	0.041	-0.034	0.097	0.152	222.902069	34.389240	-289.03	-2063.05
5	GUIDE	335287728	9.06	7580	0.007	0.070	0.078	0.127	223.554837	33.608720	-87.61	1349.99
6	GUIDE	335288000	8.48	7580	0.003	0.009	0.067	0.105	223.516492	33.640072	-66.25	1191.04
7	GUIDE	335288992	9.98	7573	0.084	0.017	0.117	0.188	223.017835	33.216530	2053.53	1466.79

2.4 Star Slots

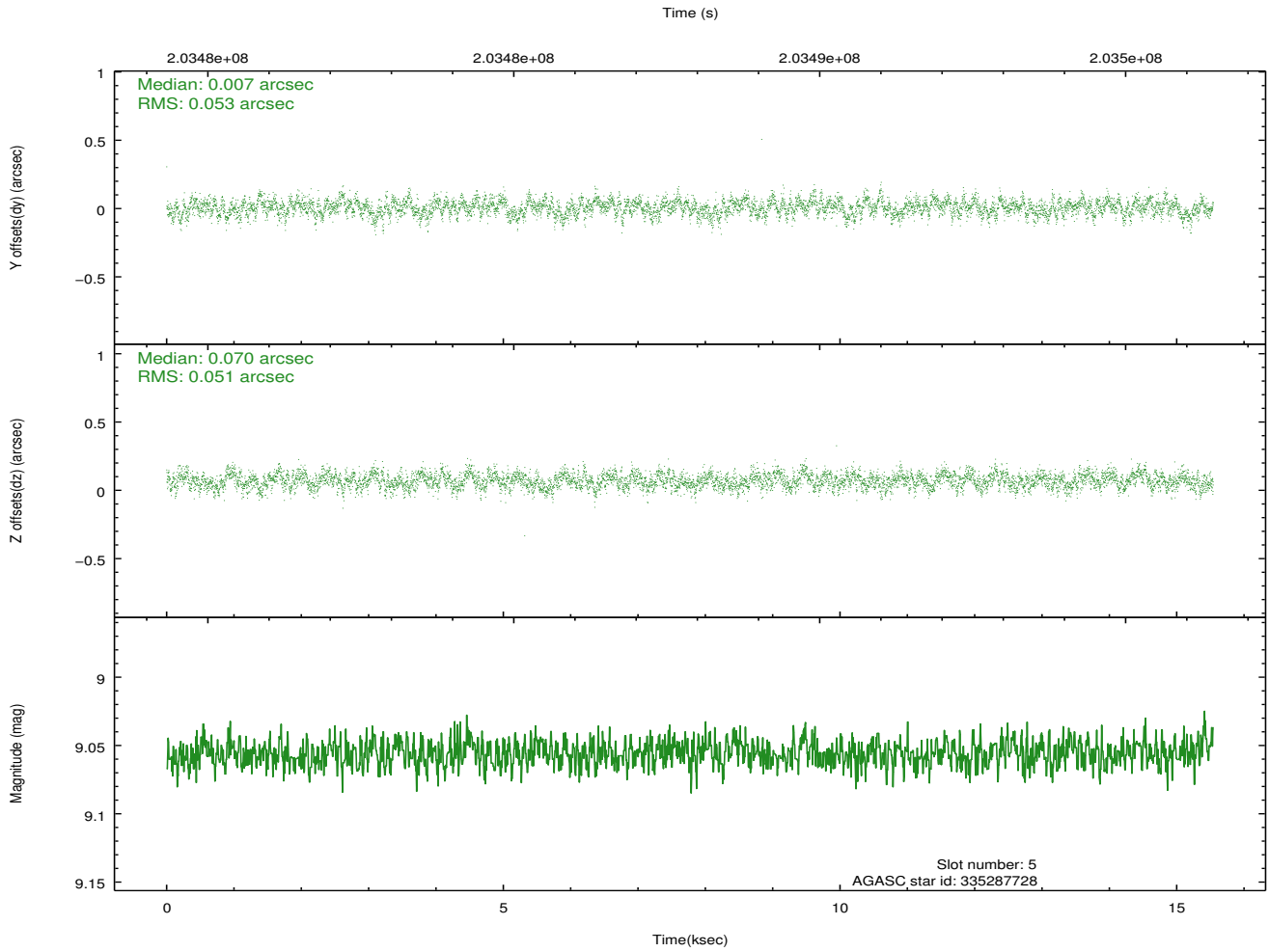
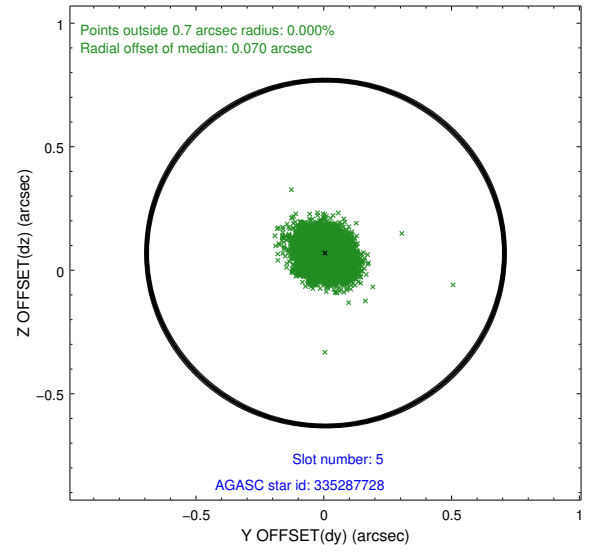
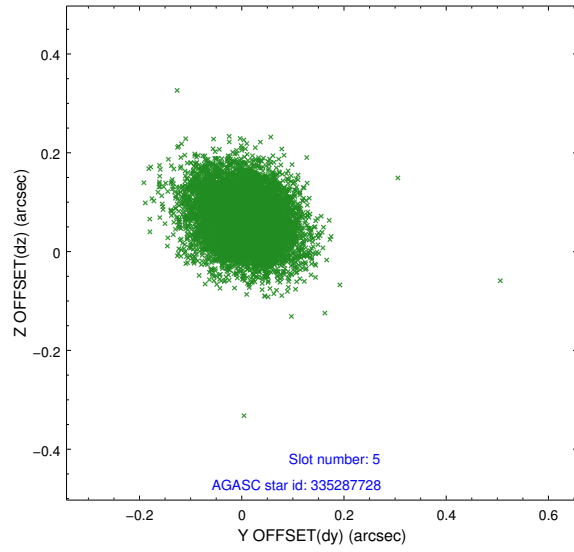
2.4.1 Slot 3



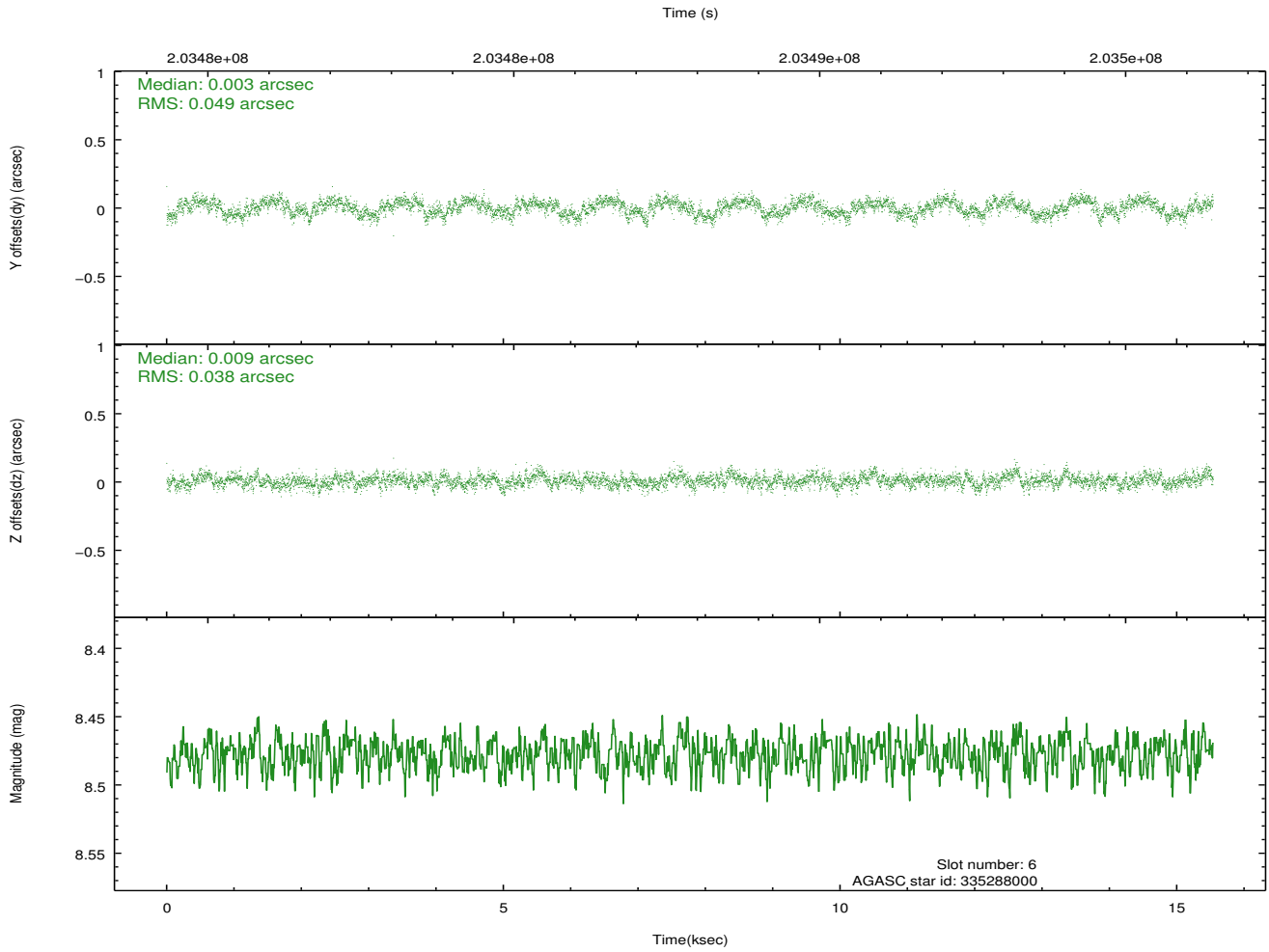
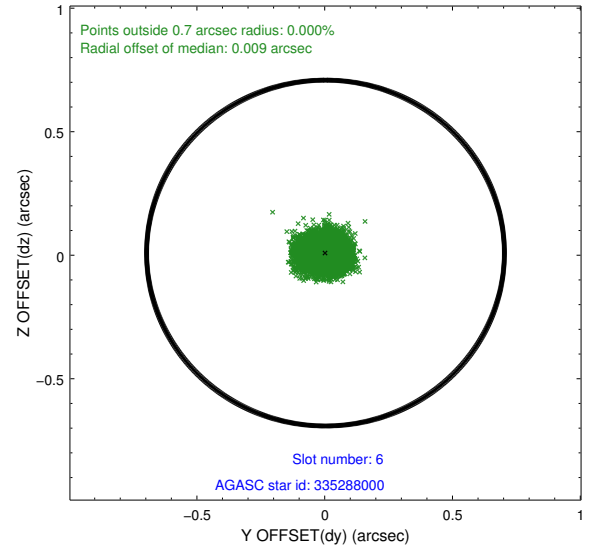
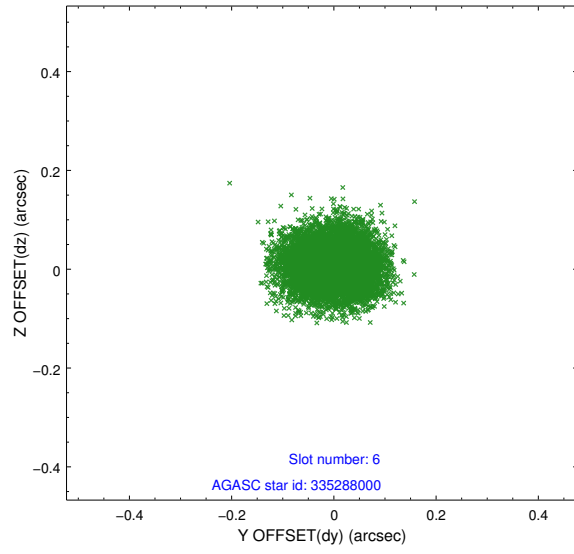
2.4.2 Slot 4



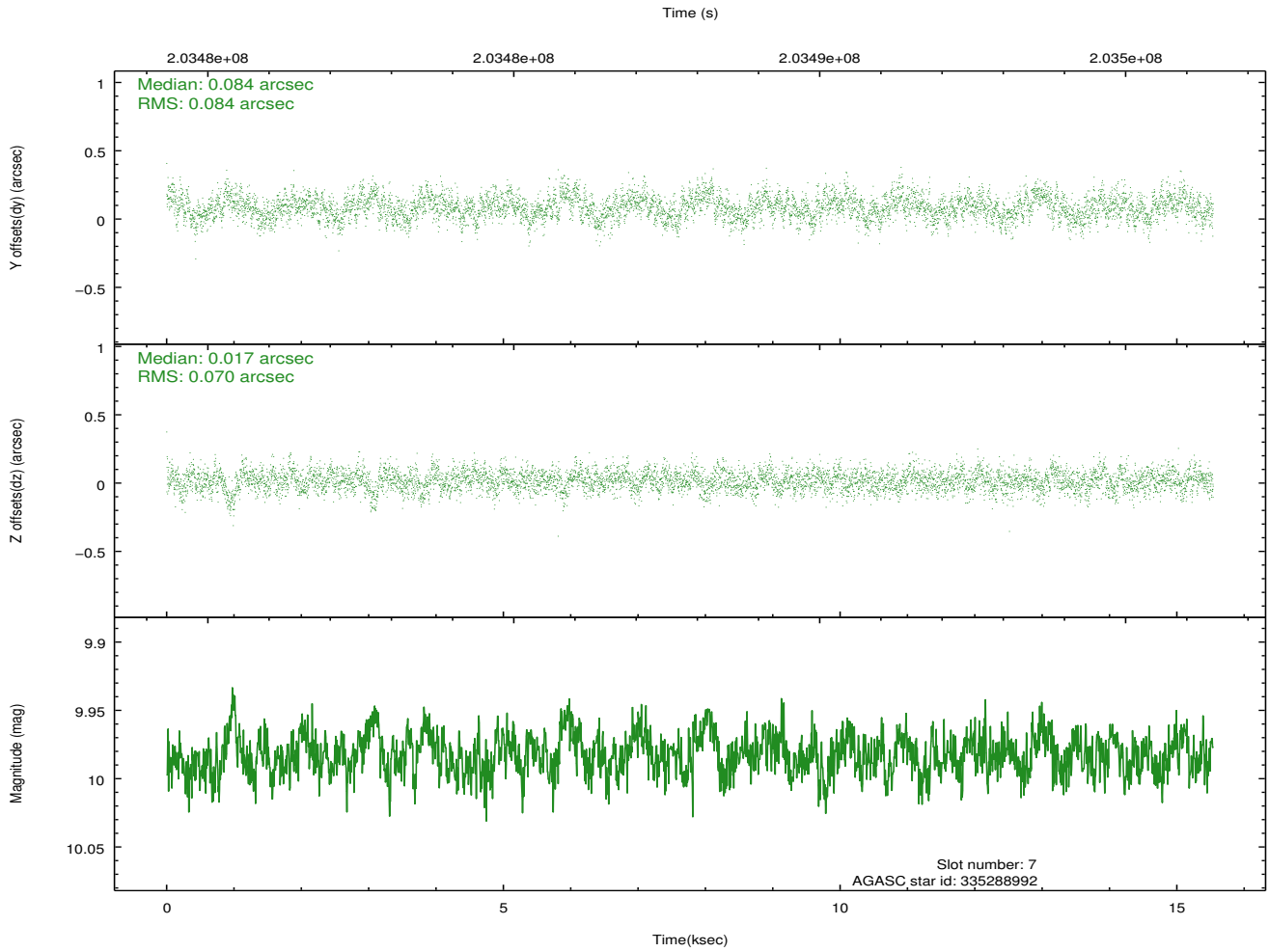
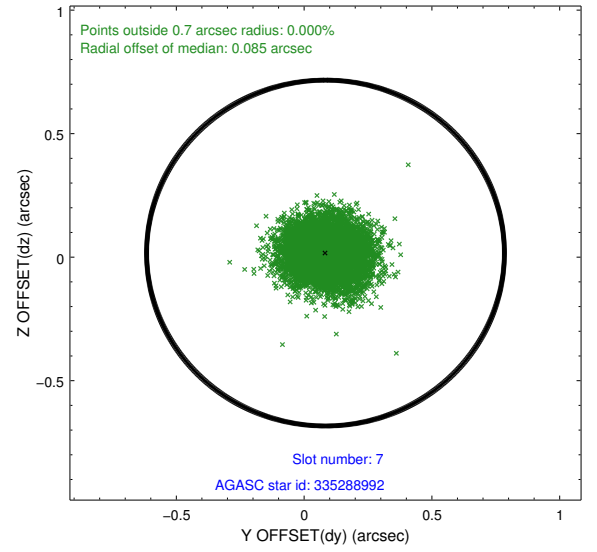
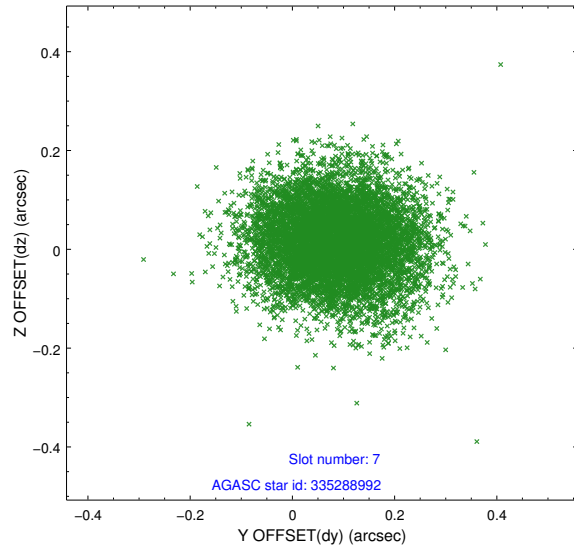
2.4.3 Slot 5



2.4.4 Slot 6

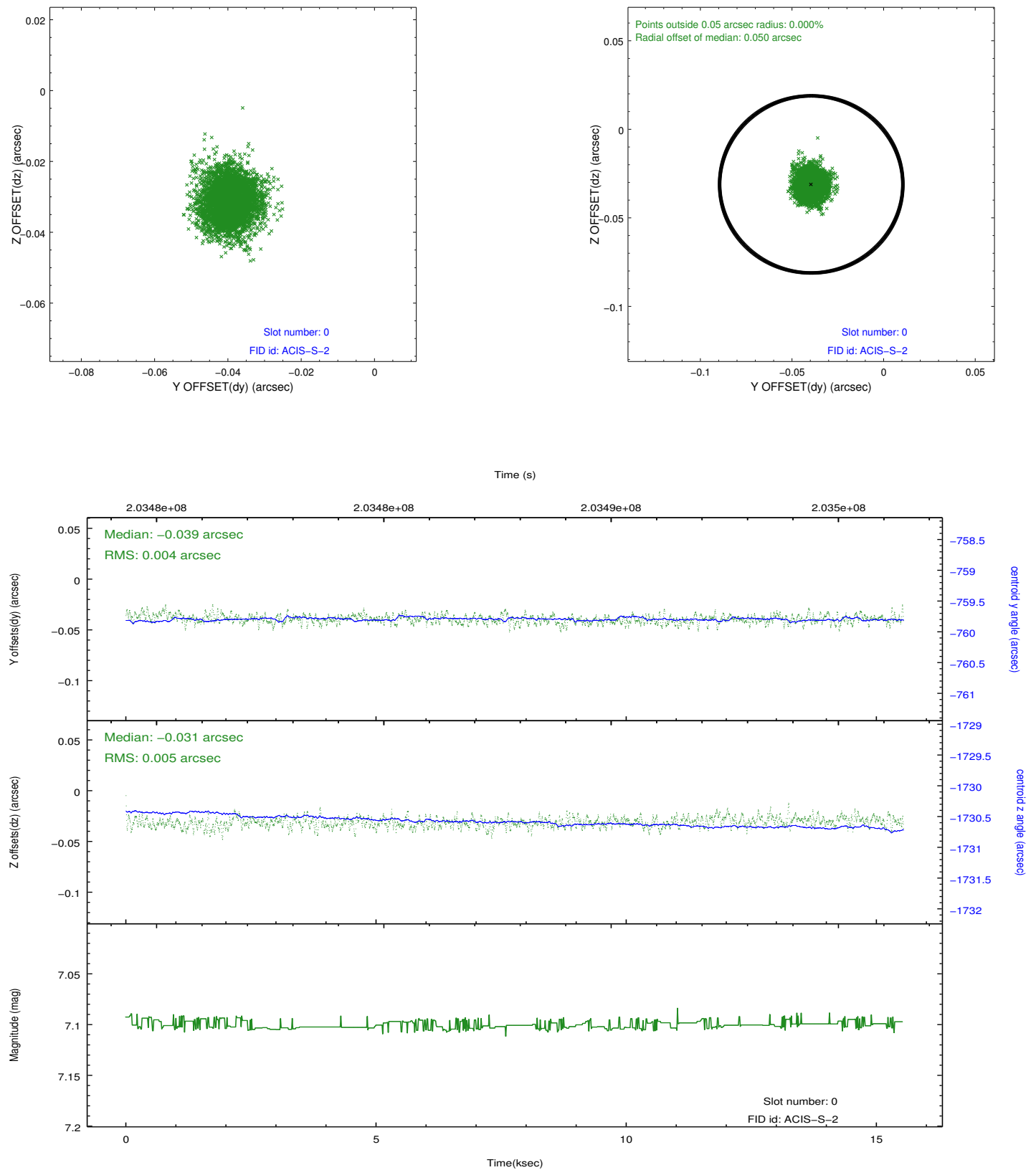


2.4.5 Slot 7

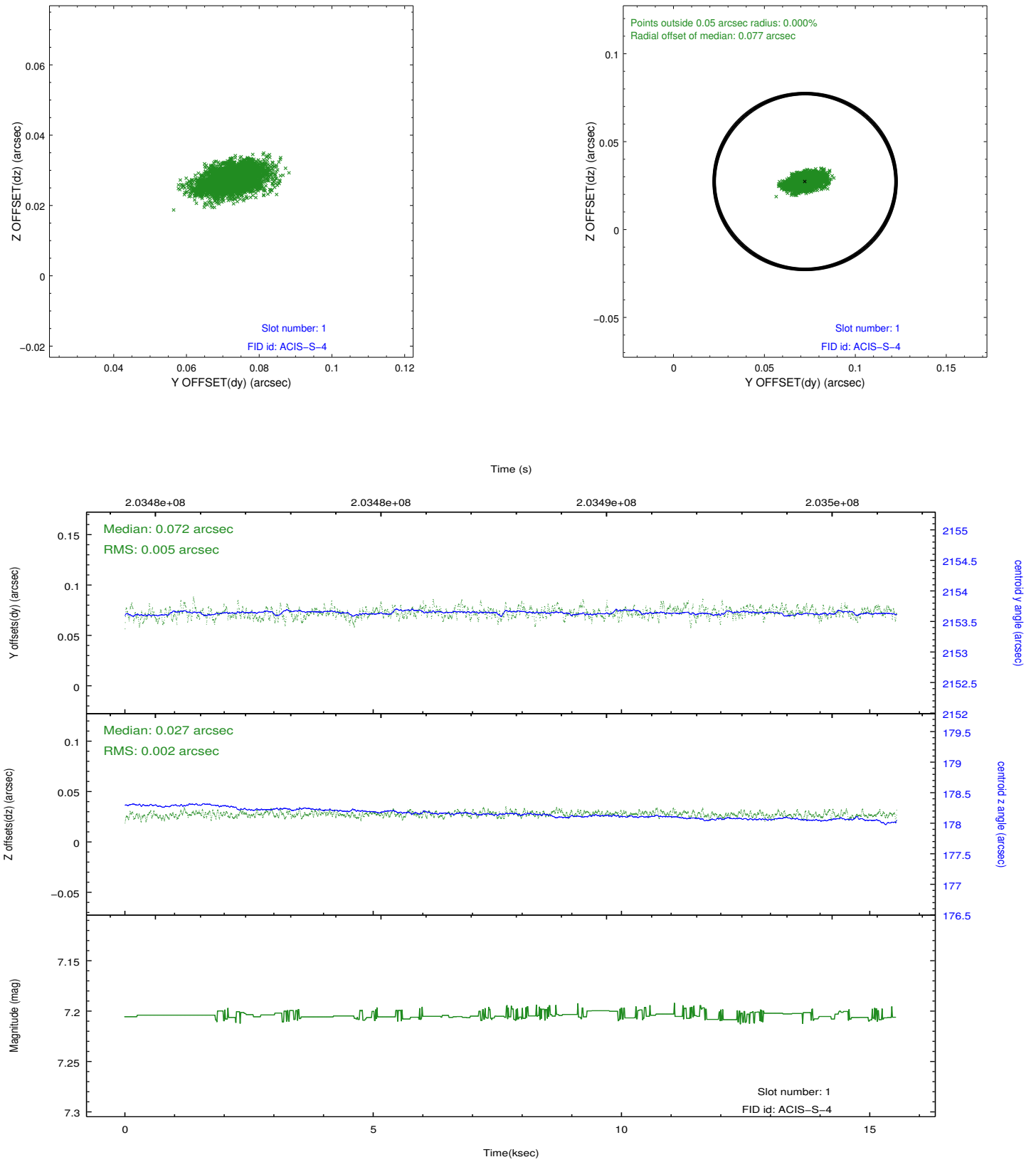


2.5 FID Slots

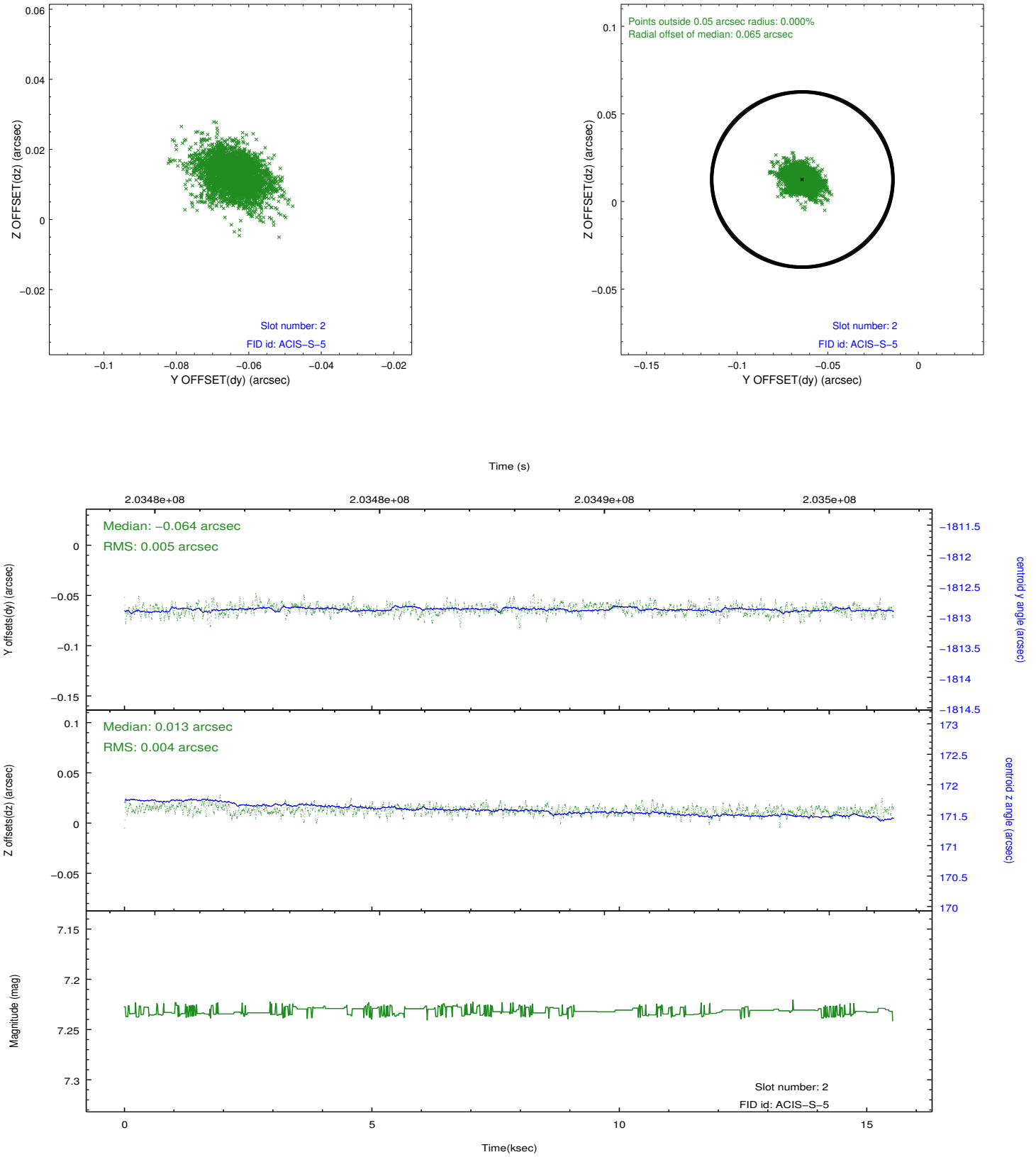
2.5.1 Slot 0



2.5.2 Slot 1



2.5.3 Slot 2



A Summary

A.1 Status

V&V Scientist	Jen Lauer
V&V Date (YYYY-MM-DD)	2012.12.17
V&V Edition	1
V&V Disposition and Status	OK
V&V Charge Time	15.038

A.2 Comments