

V&V Reference Report

L2 ASCDS Version : 7.6.7.2

Observation 4792 - L2 Version 001
Chandra X-Ray Center

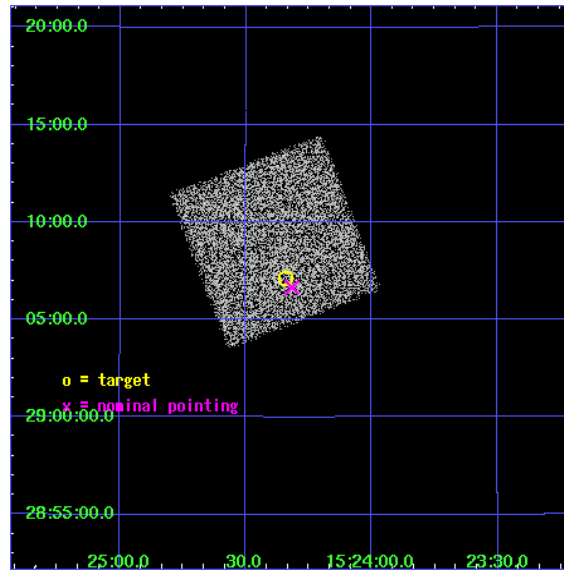
L2 Processing Date : Apr 26 2006

Contents

1	Front	2
2	OBI	3
2.1	OBI	3
2.1.1	Images	3
2.1.2	Bias	3
2.1.3	Parameters	4
2.1.4	Events	4
2.2	Compared Parameters	5
2.3	Aspect	6
2.4	Star Slots	9
2.4.1	Slot 3	9
2.4.2	Slot 4	10
2.4.3	Slot 5	11
2.4.4	Slot 6	12
2.4.5	Slot 7	13
2.5	FID Slots	14
2.5.1	Slot 0	14
2.5.2	Slot 1	15
2.5.3	Slot 2	16
3	Point Sources	17
A	Summary	18
A.1	Status	18
A.2	Comments	18

1 Front

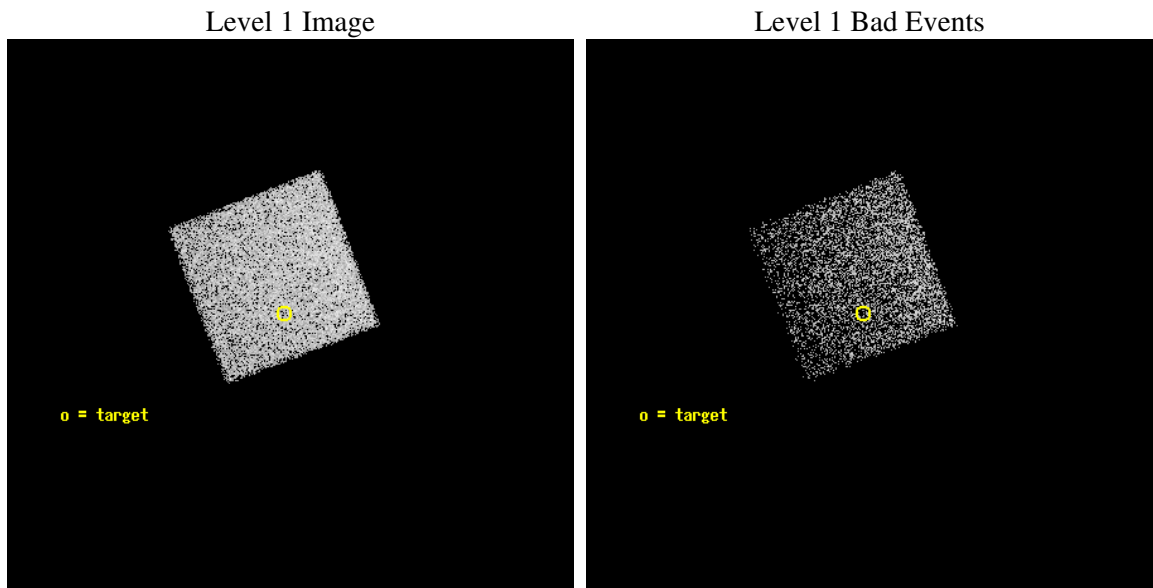
seq_num	700875
obs_id	4792
title	Anchoring the AGN X-ray Luminosity Function
observer	Dr. JOHN SALZER
object	F1520-608
dtcycle	0
cycle	P
ra_targ	231.085
dec_targ	29.119111
ra_nom	231.07934085197
dec_nom	29.110913644293
roll_nom	248.94648458191
revision	3
ontime	4182.0
livetime	4125.5623076316
ontime7	4182.0
l2events	14831



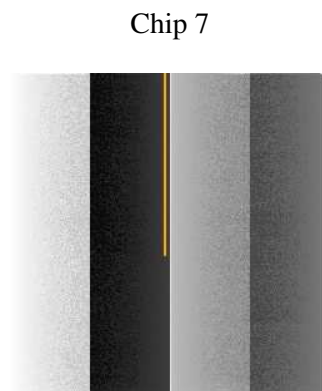
2 OBI

2.1 OBI

2.1.1 Images



2.1.2 Bias



2.1.3 Parameters

obi_num	3
ascdsver	7.6.7.2
caldbver	3.2.1
date	2006-04-26T10:14:06
revision	3

sched_exp_time	4000.000000
ontime	4427.7000770271
ontime7	4427.7000770271
l1events	41547

2.1.4 Events

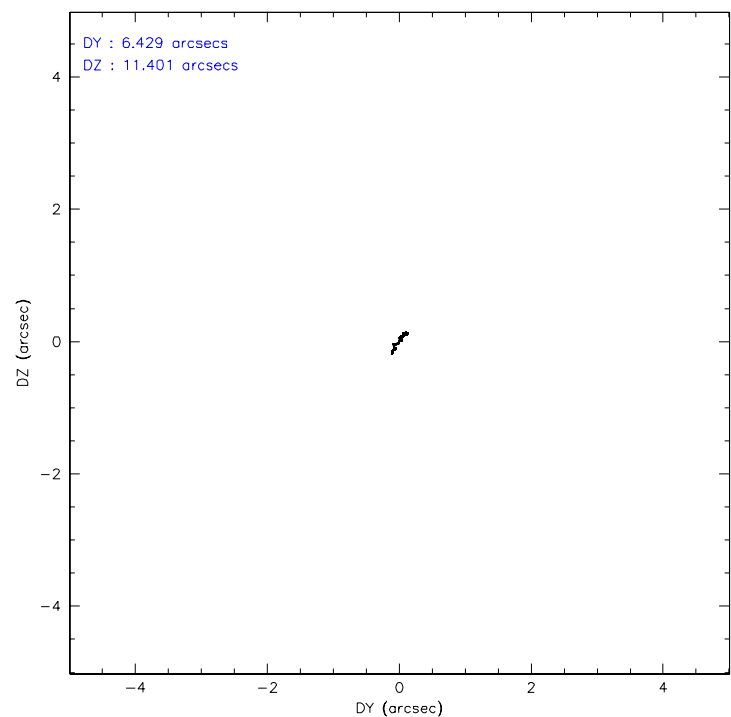
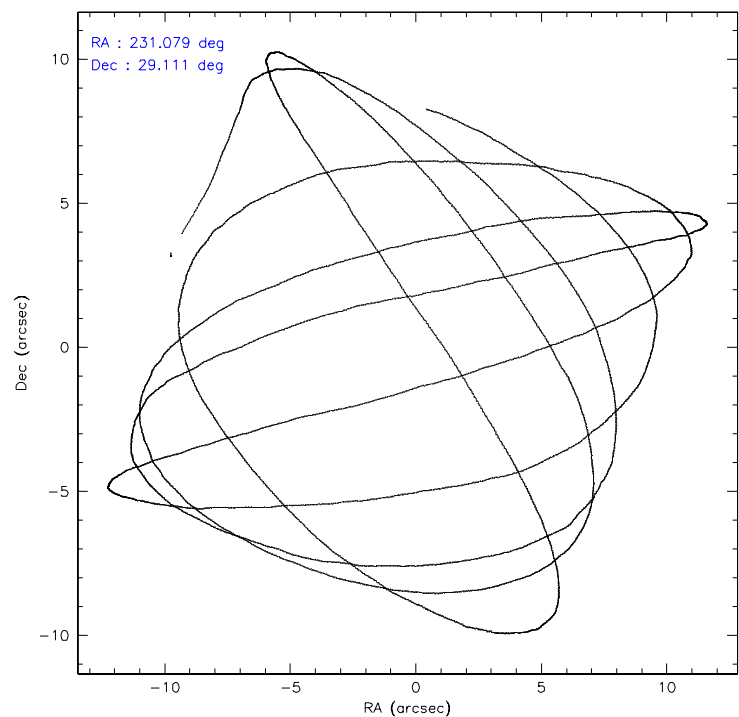
	ccd 7
level 1 events	41547
rejected events	26272
rejected %	63%

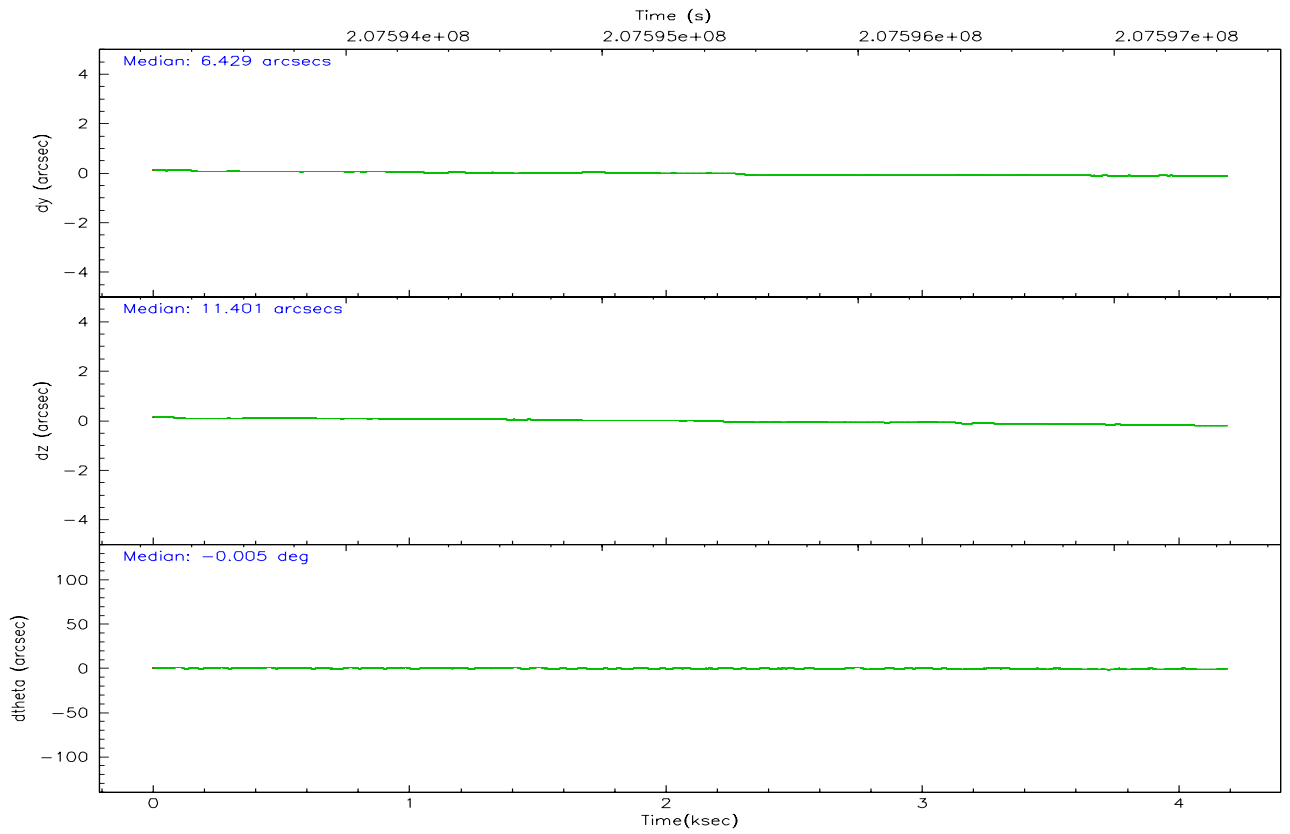
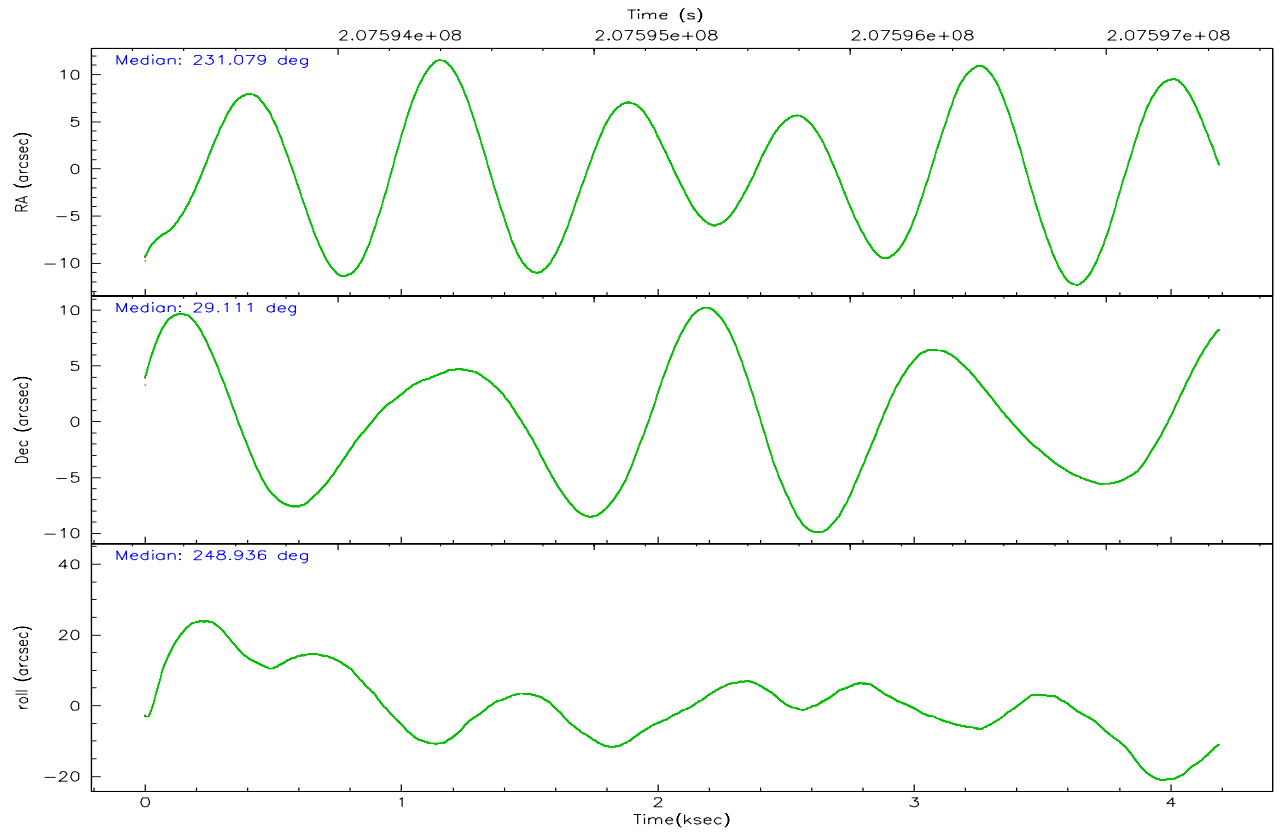
	ccd 7
grade 0 events	980
	2%
grade 1 events	31
	0%
grade 2 events	3911
	9%
grade 3 events	834
	2%
grade 4 events	840
	2%
grade 5 events	2779
	6%
grade 6 events	9639
	23%
grade 7 events	22533
	54%

2.2 Compared Parameters

Parameter	Planned	Actual	Parameter	Planned	Actual
Instrument	ACIS	ACIS	Obspar format version number	6	6
Detector	ACIS-7	ACIS-7	Obspar file type	PREDICTED	ACTUAL
Grating	NONE	NONE	Obspar update status	NONE	UPDATED
Data mode	FAINT	FAINT	On-chip summing requested	N	N
Observation mode	POINTING	POINTING	Subarray requested	NONE	NONE
Pointing RA	231.074010	231.0793408519727	Alternating exposures requested	N	N
Pointing Dec	29.137669	29.11091364429337	Primary exposure time	0.000000	3
Pointing Roll	248.792511	248.9464845819085			
SIM focus pos (mm)	-0.684267	-0.6828225247311905			
SIM defocus (mm)	0	0.001444936568705701			
SIM translation stage pos (mm)	-190.132523	-190.1400660498719			
SIM translation stage offset (mm)	0	0.00754346686406393			
Observation start time	207593437.184000	207592585.04034			
Observation start date	2004-07-30T16:49:33	2004-07-30T16:36:25			
Observation end time	207597437.184000	207598272.25309			
Observation end date	2004-07-30T17:56:13	2004-07-30T18:11:12			
Read mode	TIMED	TIMED			

2.3 Aspect



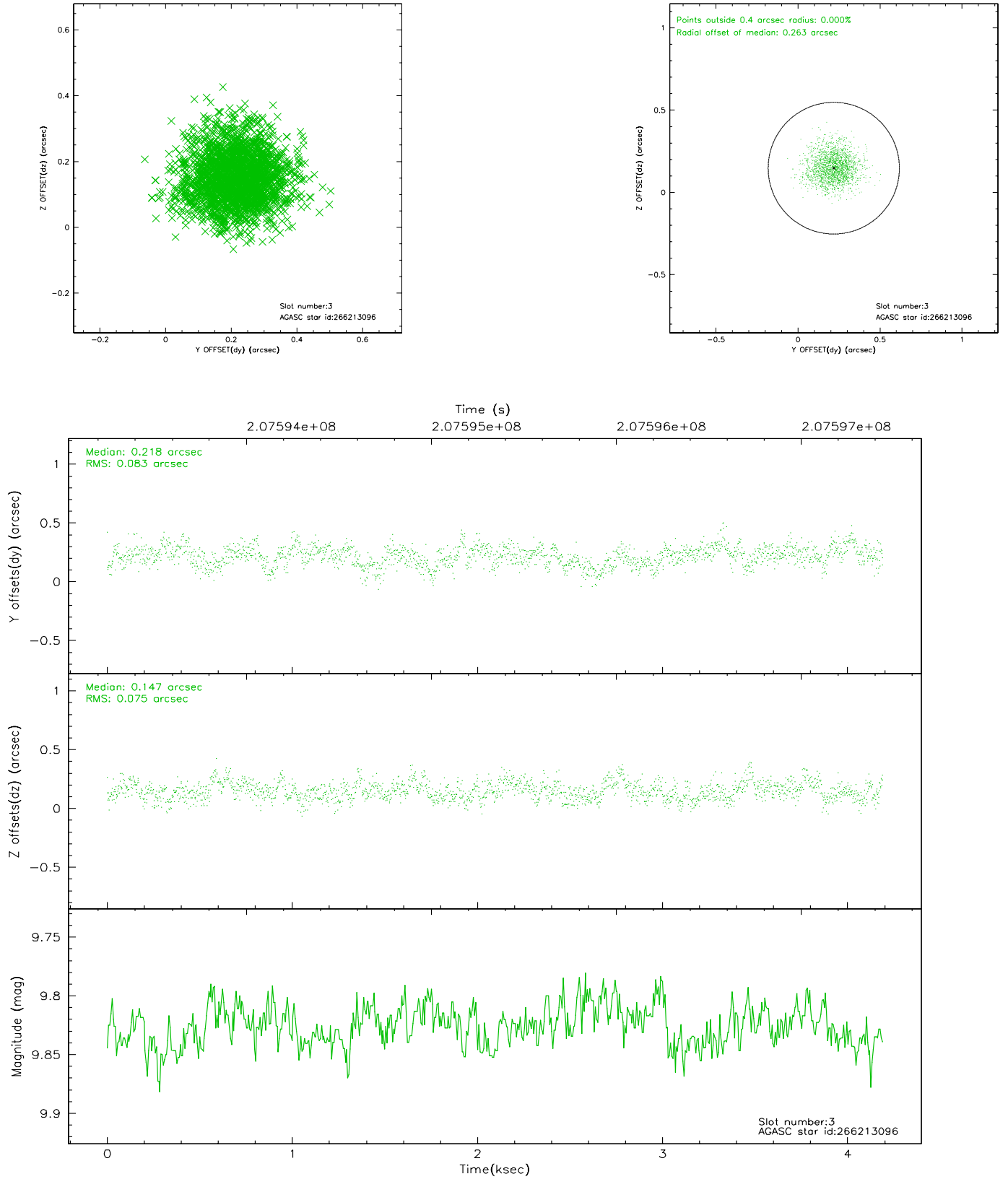


Slot Statistics

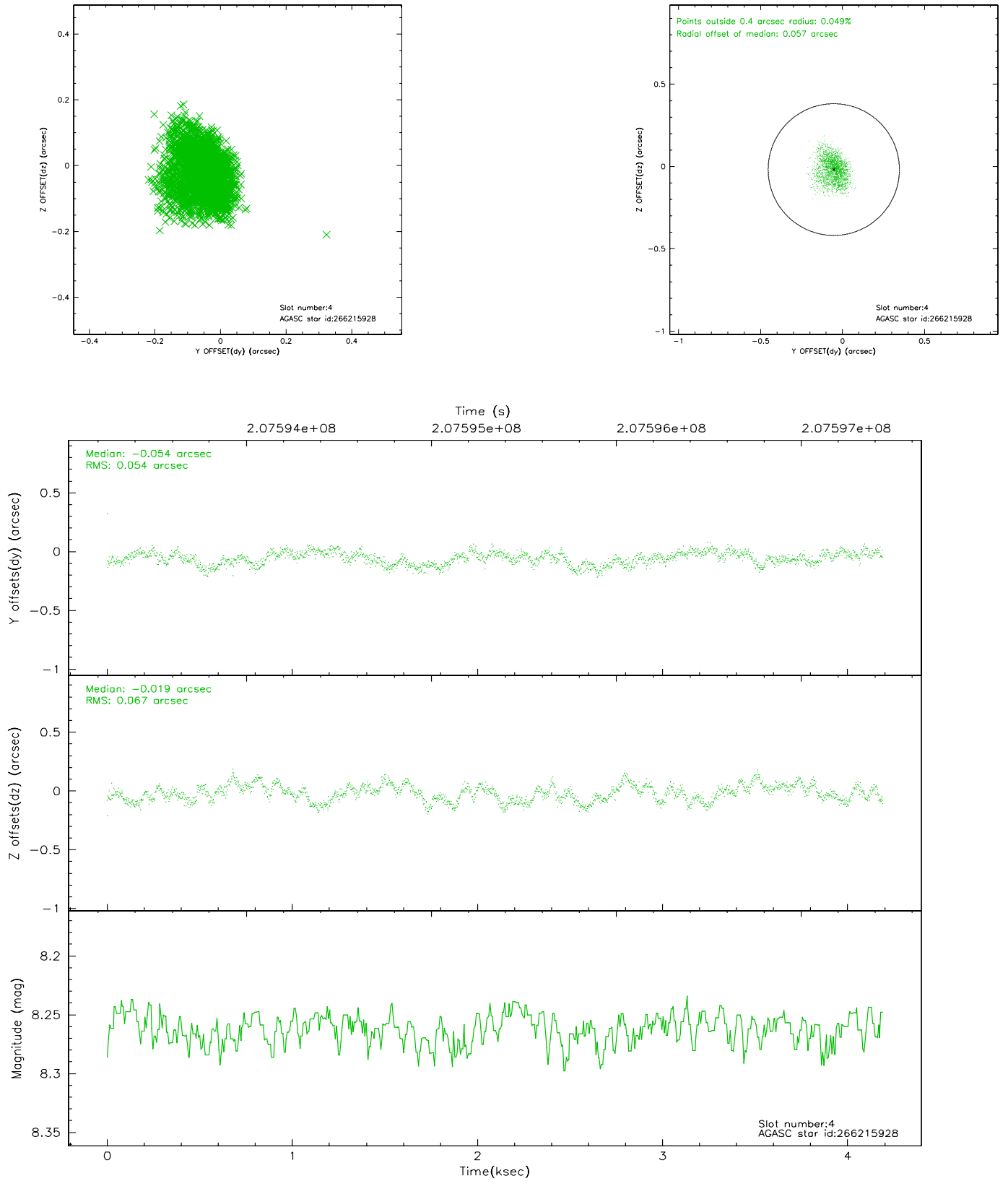
slot	status	id	mag	n_pts	med_dy	med_dz	dr1	dr2	ra	dec	mean_y	mean_z
0	FID	ACIS-S-2	7.10	1022	-0.042	0.002	0.007	0.012	0.000000	0.000000	-759.17	-1732.68
1	FID	ACIS-S-4	7.21	1023	0.033	0.020	0.005	0.010	0.000000	0.000000	2153.49	174.32
2	FID	ACIS-S-5	7.23	1022	-0.022	-0.013	0.006	0.010	0.000000	0.000000	-1810.11	169.61
3	GUIDE	266213096	9.83	2043	0.218	0.147	0.119	0.195	231.286460	28.376979	2309.64	1618.41
4	GUIDE	266215928	8.26	2044	-0.054	-0.019	0.093	0.147	231.261301	29.146197	-240.46	538.42
5	GUIDE	266216280	9.11	2045	-0.146	0.014	0.090	0.145	230.814626	29.031614	651.28	-623.33
6	GUIDE	266350560	10.85	2038	-0.024	-0.122	0.226	0.367	231.729637	28.979572	-221.13	2128.20
7	GUIDE	266211432	9.82	2042	0.024	-0.020	0.140	0.230	230.664611	28.567589	2380.11	-463.74

2.4 Star Slots

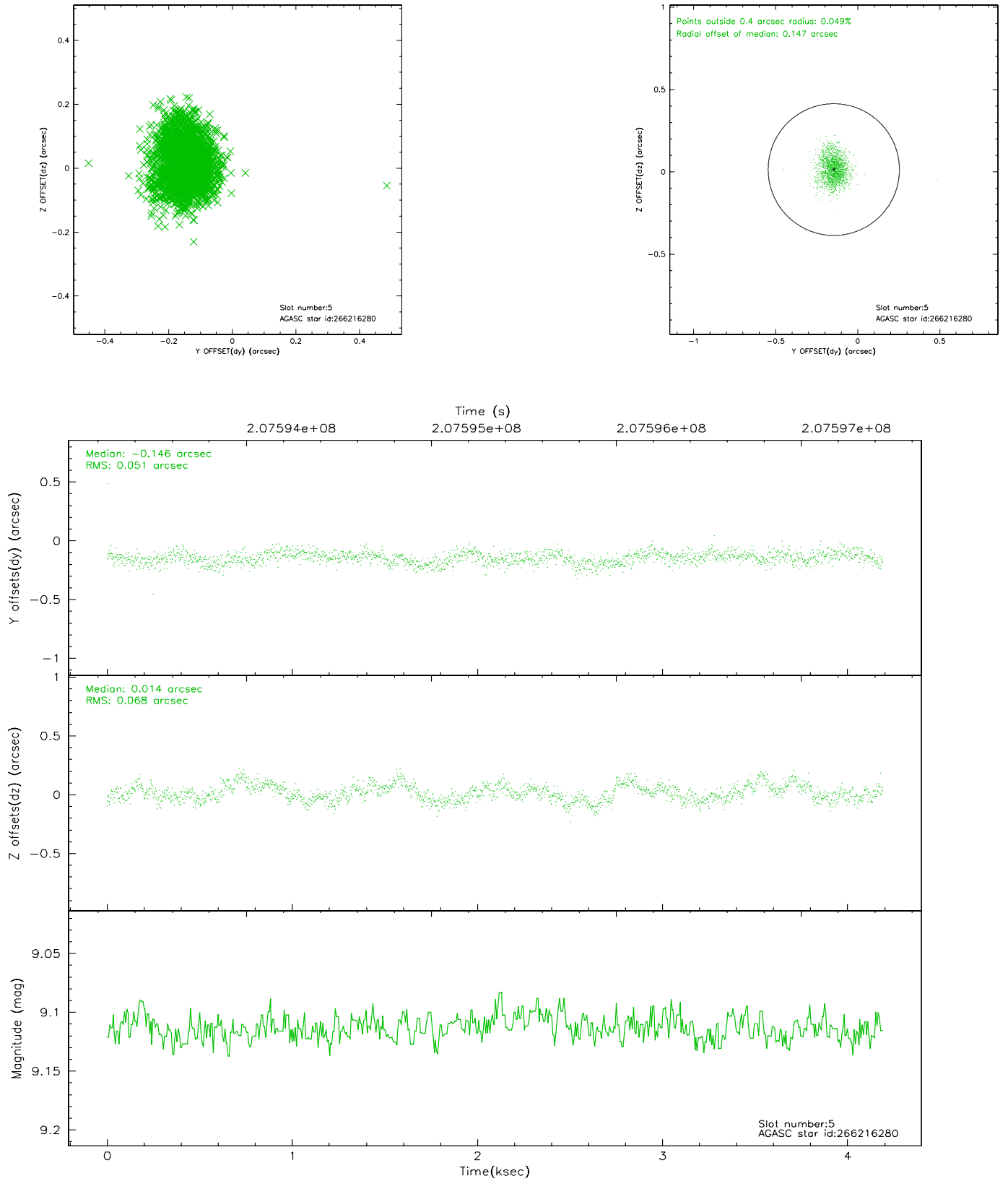
2.4.1 Slot 3



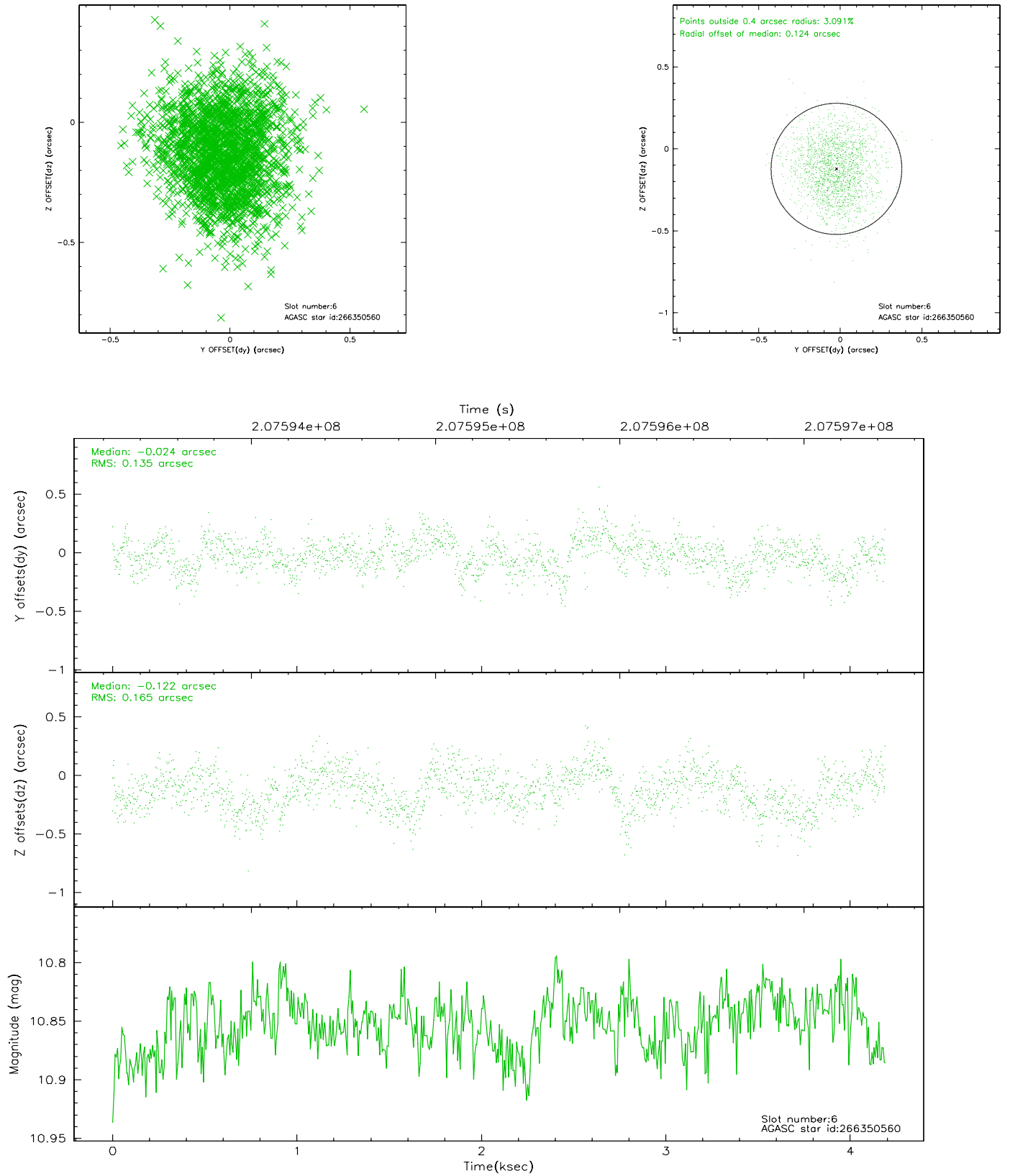
2.4.2 Slot 4



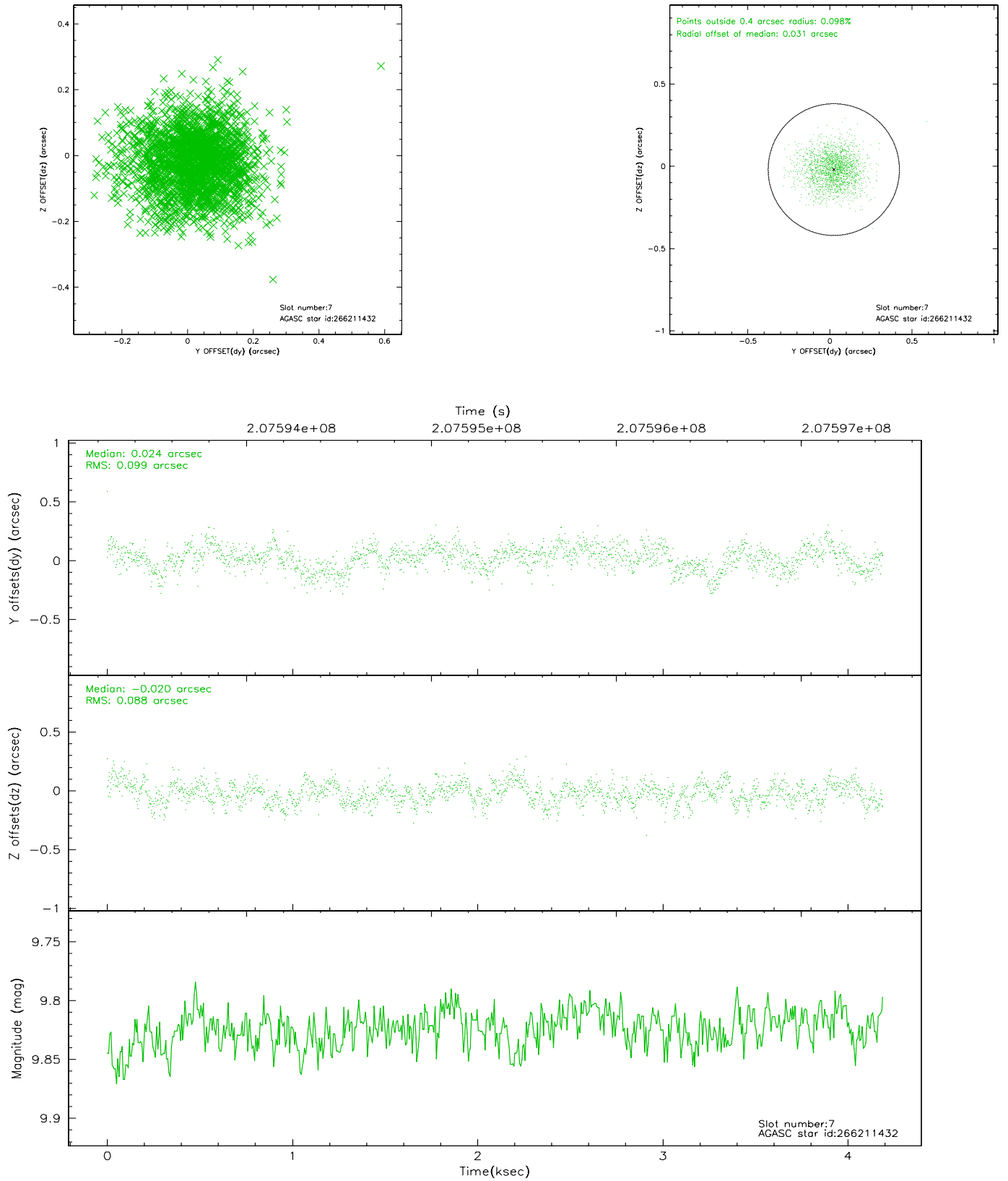
2.4.3 Slot 5



2.4.4 Slot 6

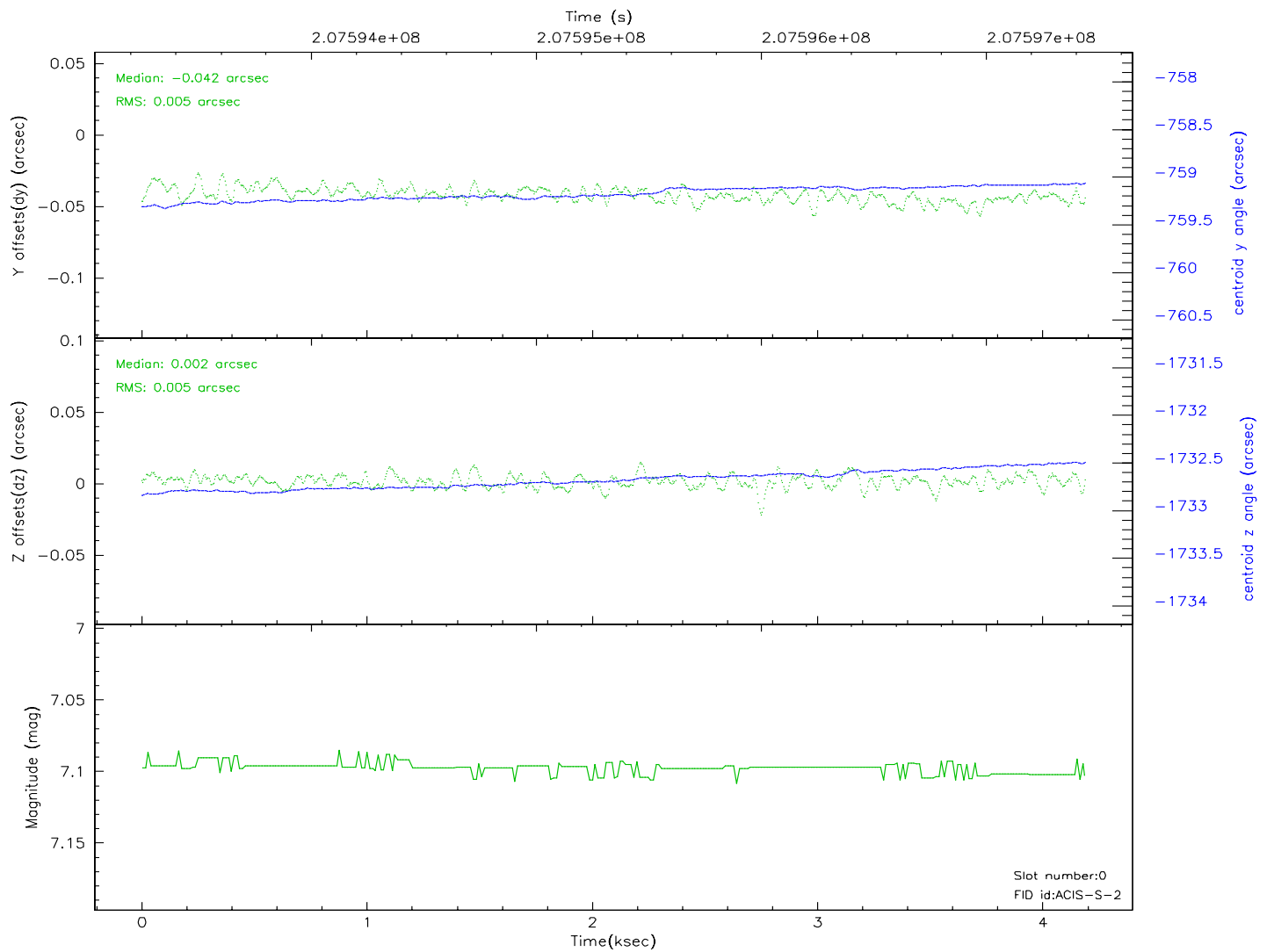
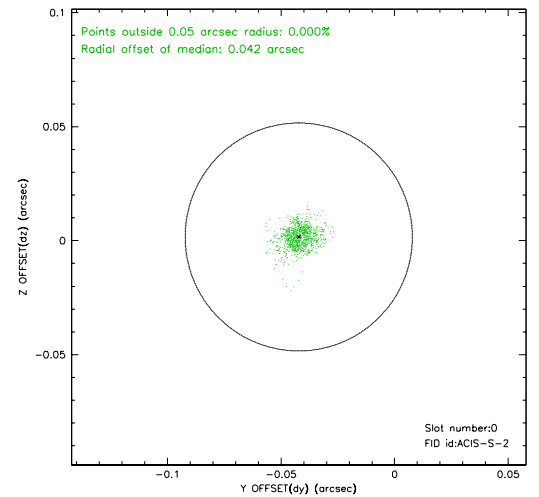
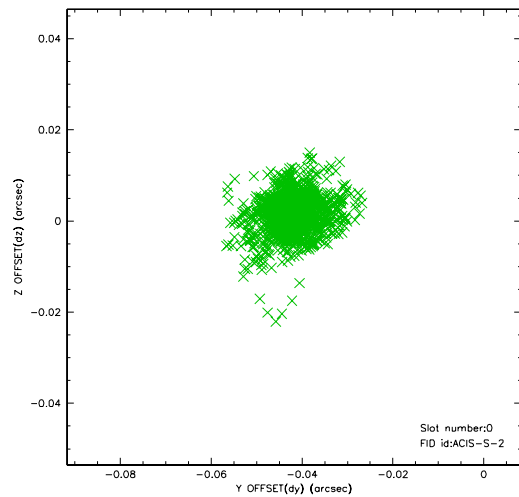


2.4.5 Slot 7

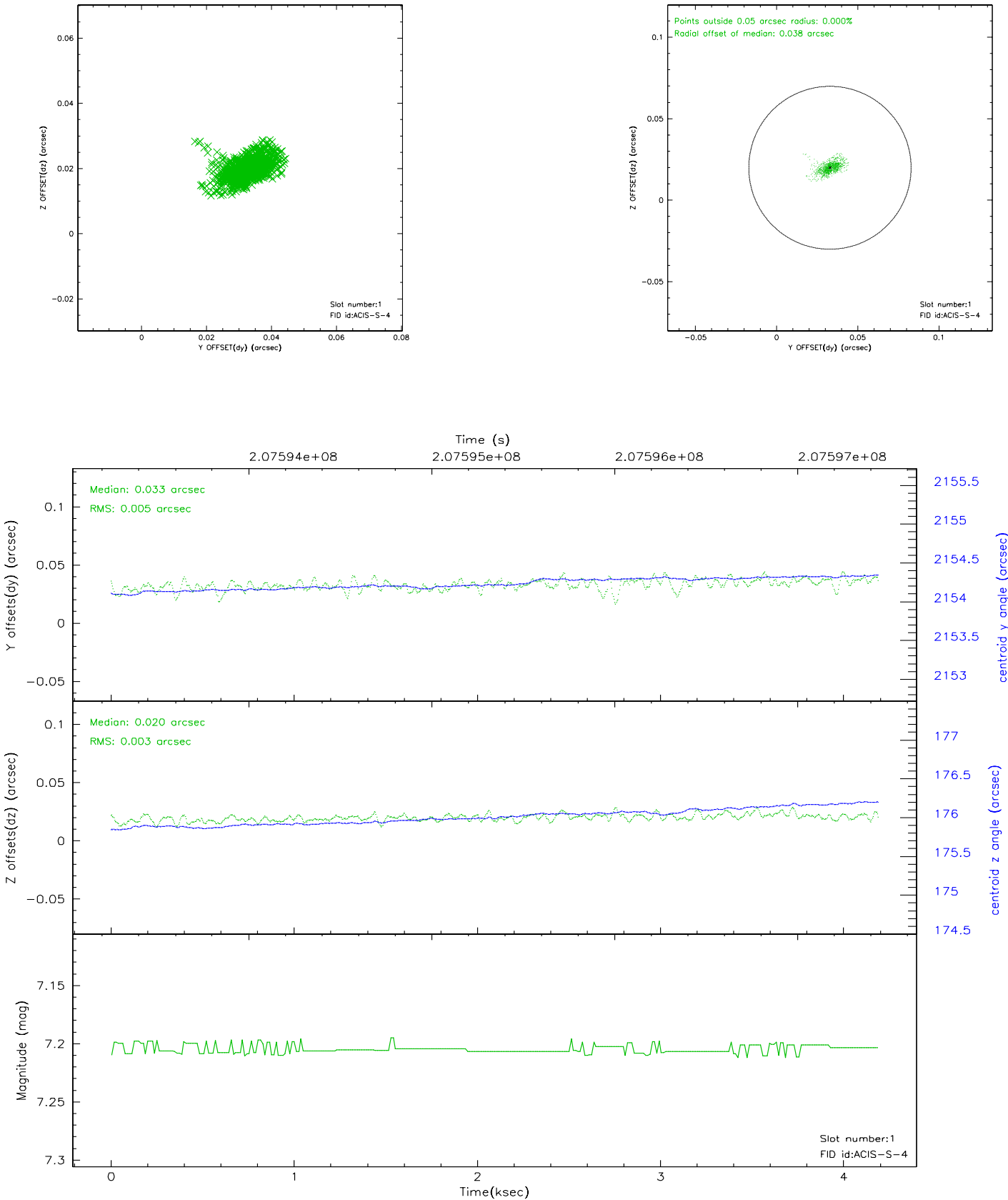


2.5 FID Slots

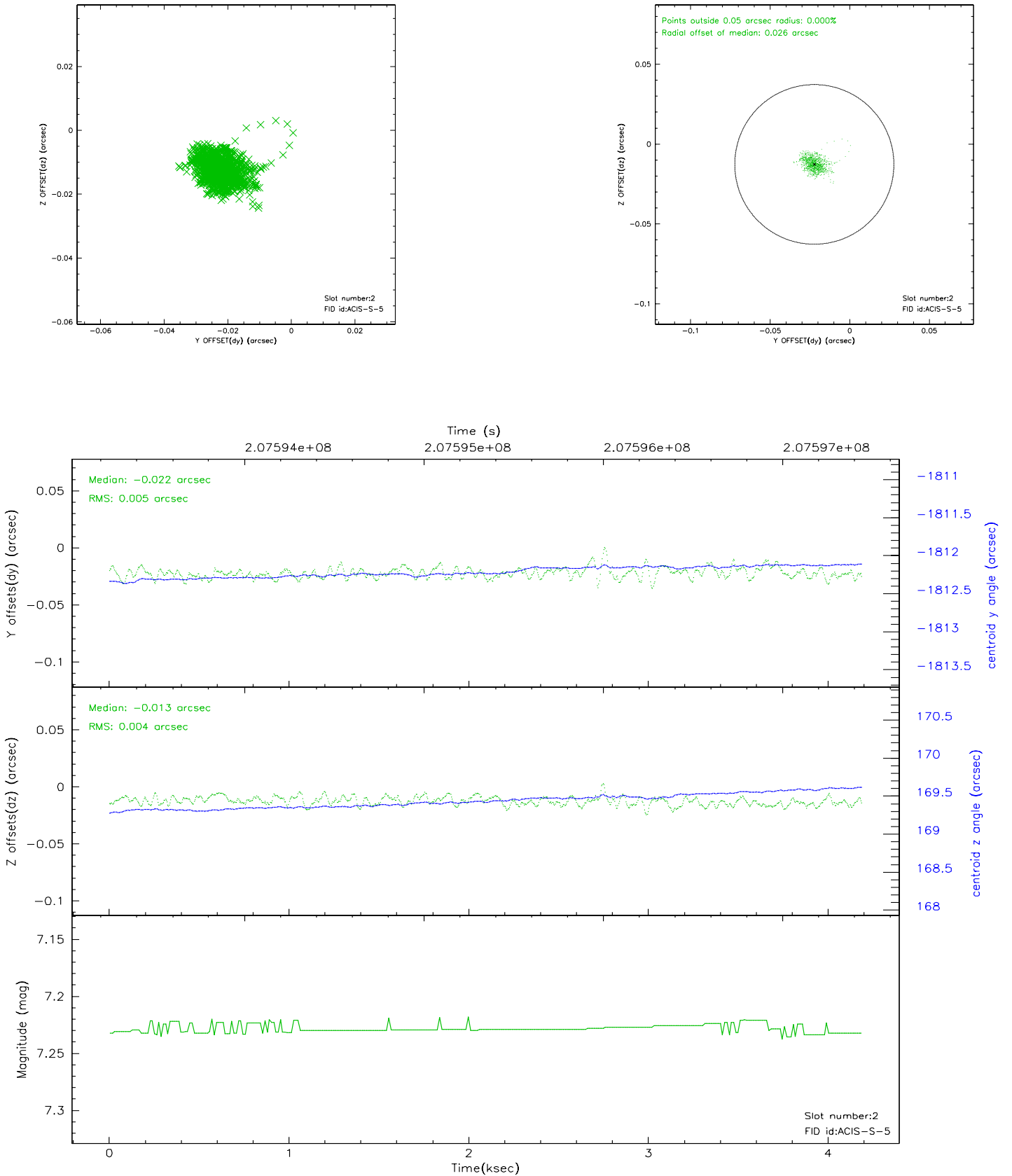
2.5.1 Slot 0



2.5.2 Slot 1



2.5.3 Slot 2



3 Point Sources

A Summary

A.1 Status

V&V Scientist	Jen Lauer
V&V Date (YYYY-MM-DD)	2006.04.26
V&V Edition	1
V&V Disposition and Status	OK
V&V Charge Time	4.182

A.2 Comments