

V&V Reference Report

L2 ASCDS Version : 7.6.7.2

Observation 4772 - L2 Version 001
Chandra X-Ray Center

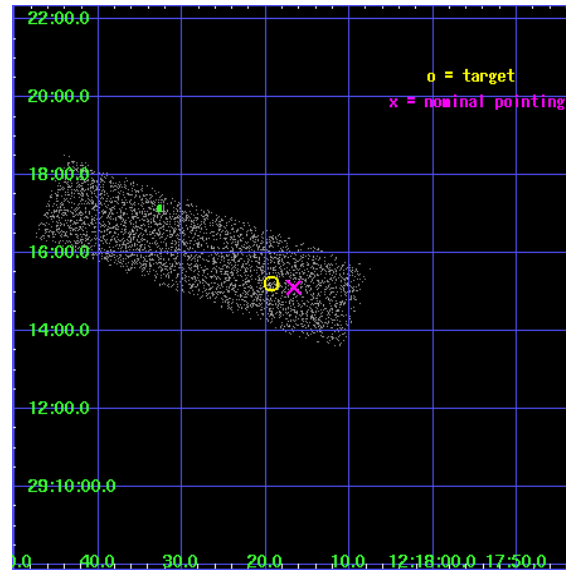
L2 Processing Date : May 25 2006

Contents

1	Front	2
2	OBI	3
2.1	OBI	3
2.1.1	Images	3
2.1.2	Bias	3
2.1.3	Parameters	4
2.1.4	Events	4
2.2	Compared Parameters	5
2.3	Aspect	6
2.4	Star Slots	9
2.4.1	Slot 3	9
2.4.2	Slot 5	10
2.4.3	Slot 6	11
2.4.4	Slot 7	12
2.5	FID Slots	13
2.5.1	Slot 0	13
2.5.2	Slot 1	14
2.5.3	Slot 2	15
3	Point Sources	16
A	Summary	17
A.1	Status	17
A.2	Comments	17

1 Front

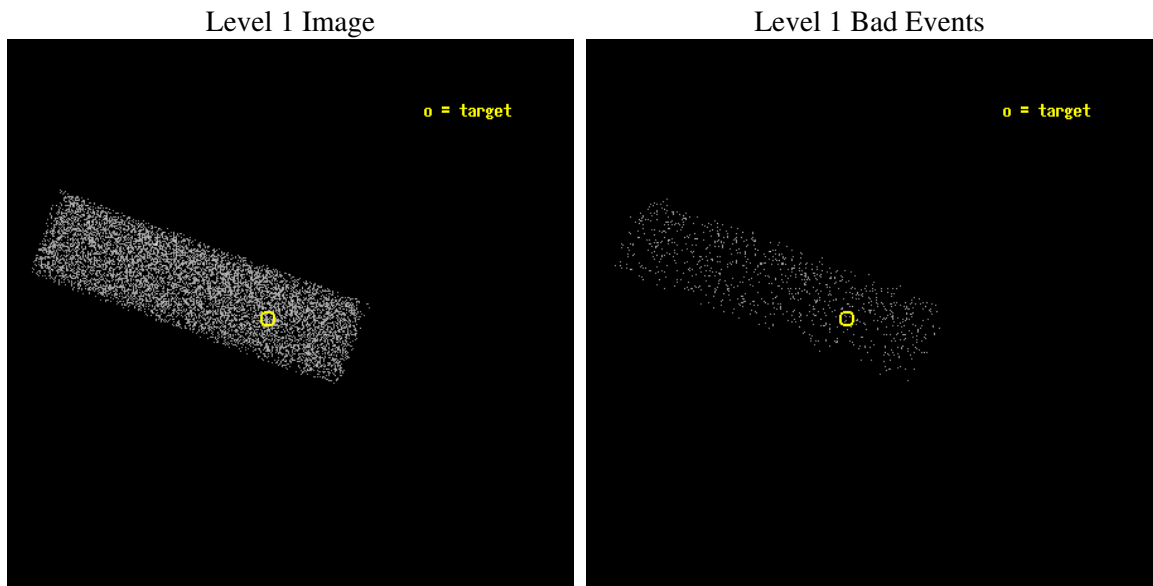
seq_num	700855
obs_id	4772
title	Anchoring the AGN X-ray Luminosity Function
observer	Dr. JOHN SALZER
object	F1215-1639
dtcycle	0
cycle	P
ra_targ	184.580417
dec_targ	29.253694
ra_nom	184.56945432938
dec_nom	29.252030700354
roll_nom	199.996321882
revision	3
ontime	4568.0000680685
livetime	4345.0966118791
ontime7	4568.0000680685
l2events	4282



2 OBI

2.1 OBI

2.1.1 Images



2.1.2 Bias

Chip 7



2.1.3 Parameters

obi_num	0
ascdsver	7.6.7.2
caldbver	3.2.2
date	2006-05-25T15:18:57
revision	3

sched_exp_time	4000.000000
ontime	4830.0401124656
ontime7	4830.0401124656
l1events	11055

2.1.4 Events

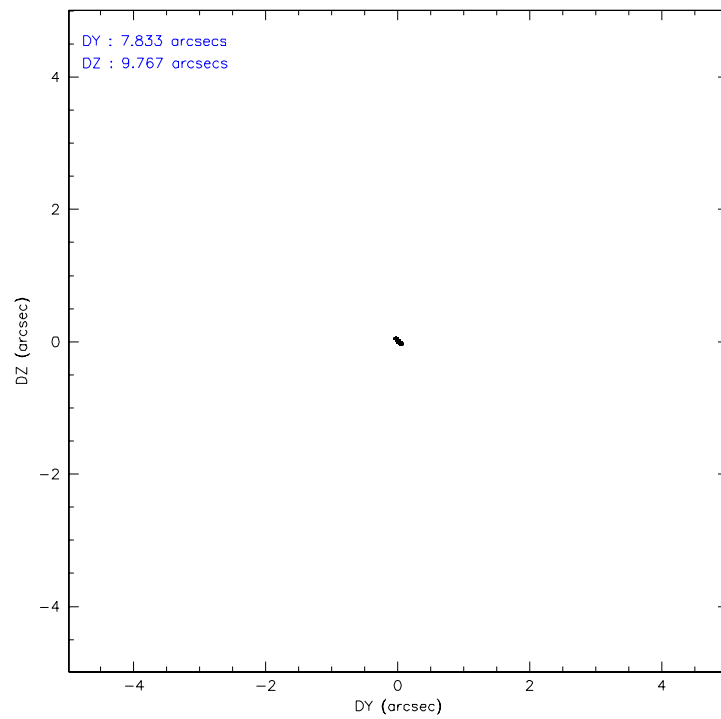
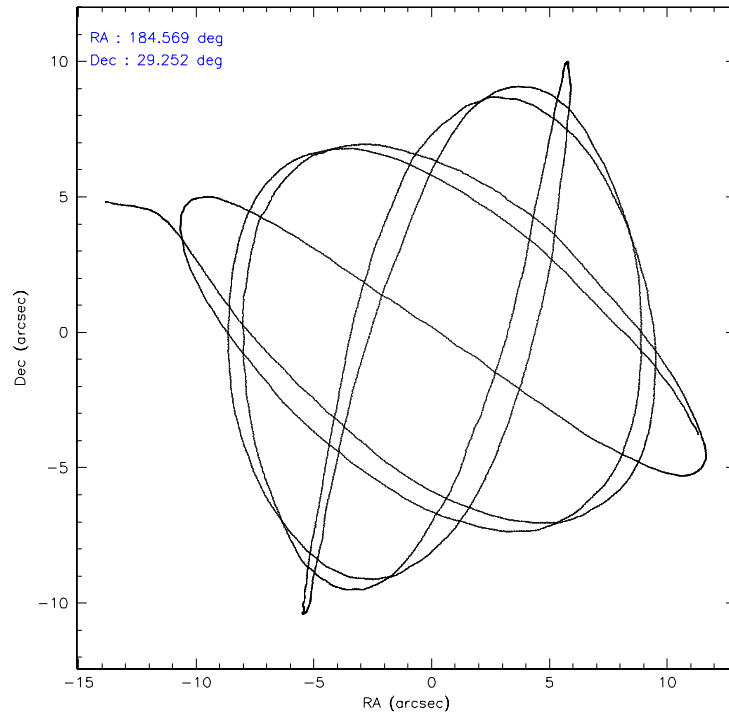
	ccd 7
level 1 events	11055
rejected events	6630
rejected %	59%

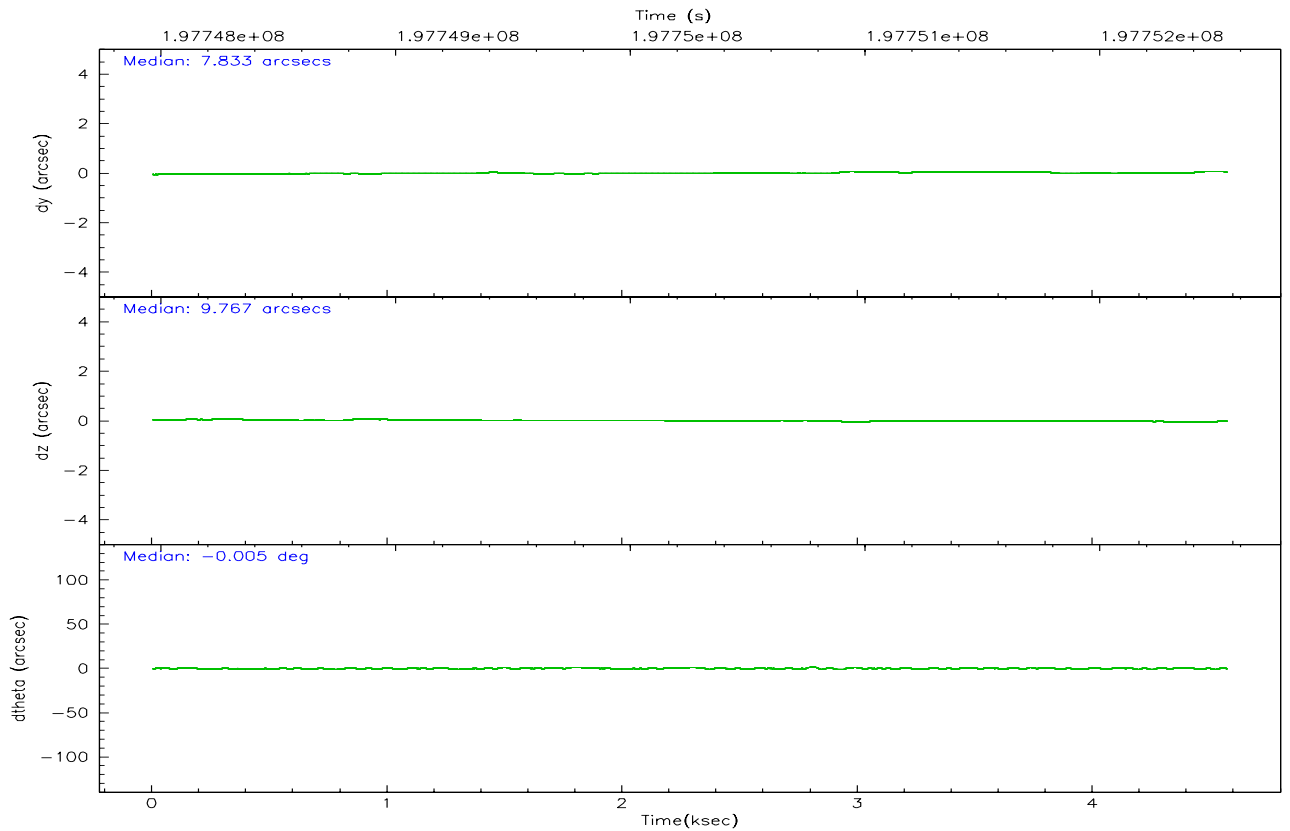
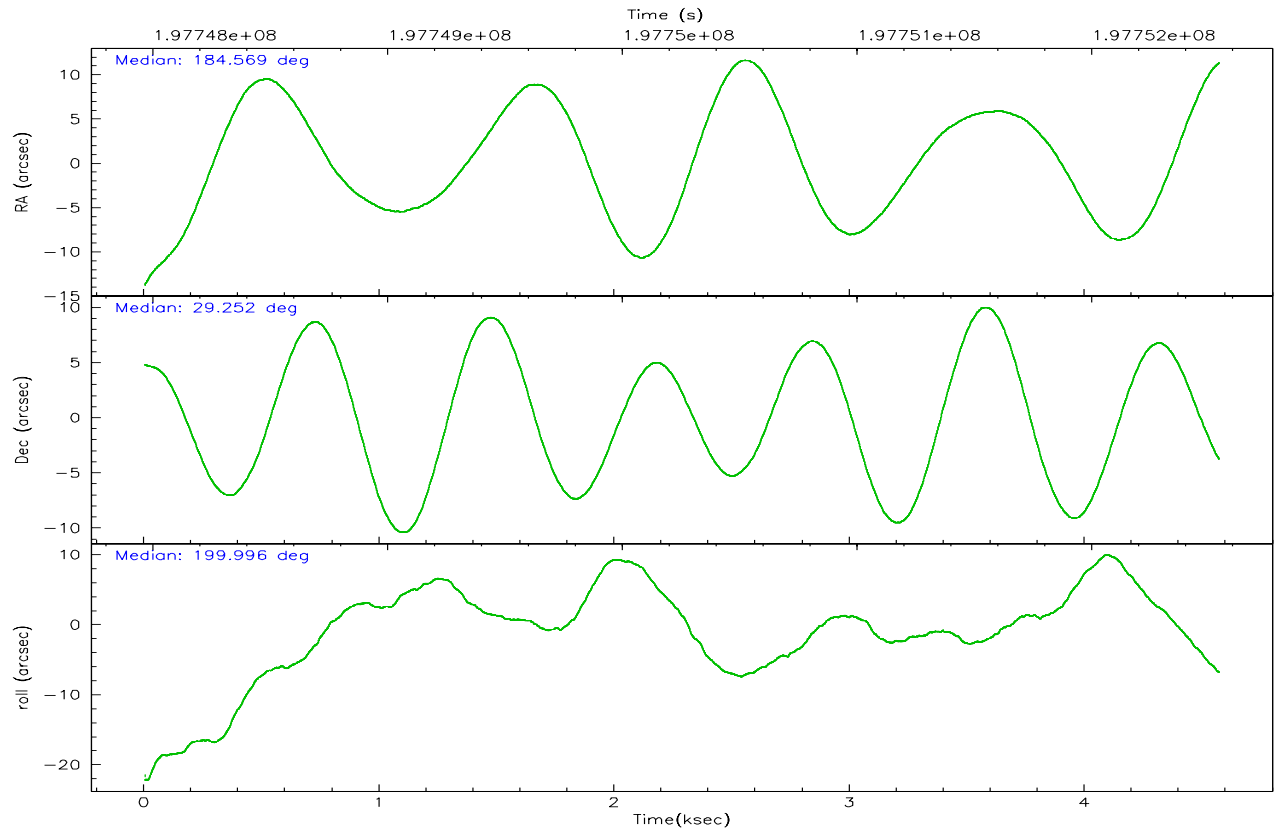
	ccd 7
grade 0 events	351
	3%
grade 1 events	8
	0%
grade 2 events	1105
	9%
grade 3 events	370
	3%
grade 4 events	335
	3%
grade 5 events	786
	7%
grade 6 events	2512
	22%
grade 7 events	5588
	50%

2.2 Compared Parameters

Parameter	Planned	Actual	Parameter	Planned	Actual
Instrument	ACIS	ACIS	Obspar format version number	6	6
Detector	ACIS-7	ACIS-7	Obspar file type	PREDICTED	ACTUAL
Grating	NONE	NONE	Obspar update status	NONE	UPDATED
Data mode	FAINT	FAINT	On-chip summing requested	N	N
Observation mode	POINTING	POINTING	Subarray requested	1/4	1/4
Pointing RA	184.589239	184.5694543293787	Subarray start row	0	385
Pointing Dec	29.273127	29.25203070035375	Subarray row count	1024	256
Pointing Roll	199.830015	199.9963218819981	Alternating exposures requested	N	N
SIM focus pos (mm)	-0.684267	-0.6828225247311905	Primary exposure time	0.000000	0.8
SIM defocus (mm)	0	0.001444936568705701			
SIM translation stage pos (mm)	-190.132523	-190.1425803651734			
SIM translation stage offset (mm)	0	0.01005778216563158			
Observation start time	197748543.184000	197747391.44248			
Observation start date	2004-04-07T18:07:59	2004-04-07T17:49:51			
Observation end time	197752543.184000	197753100.18023			
Observation end date	2004-04-07T19:14:39	2004-04-07T19:25:00			
Read mode	TIMED	TIMED			

2.3 Aspect



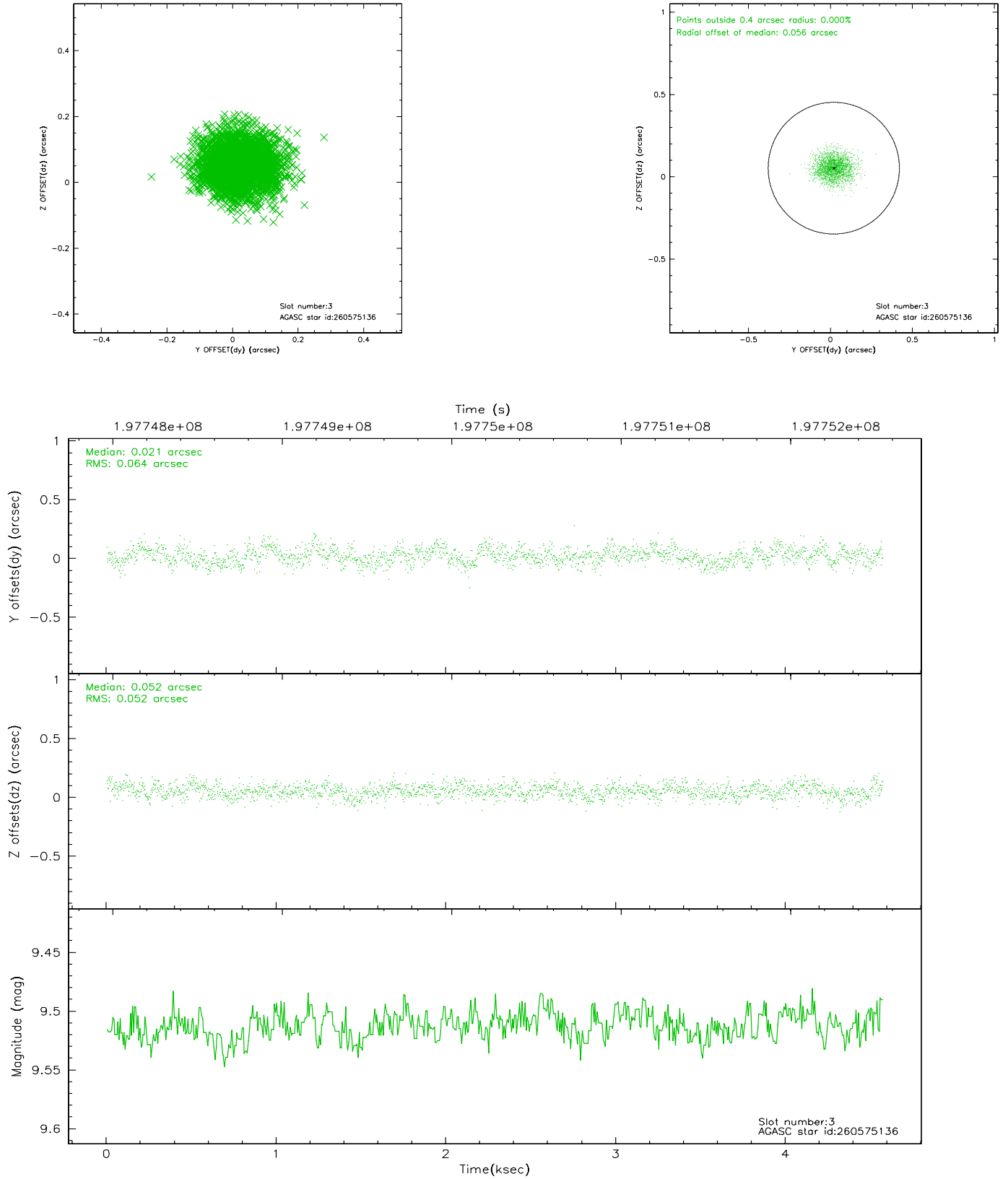


Slot Statistics

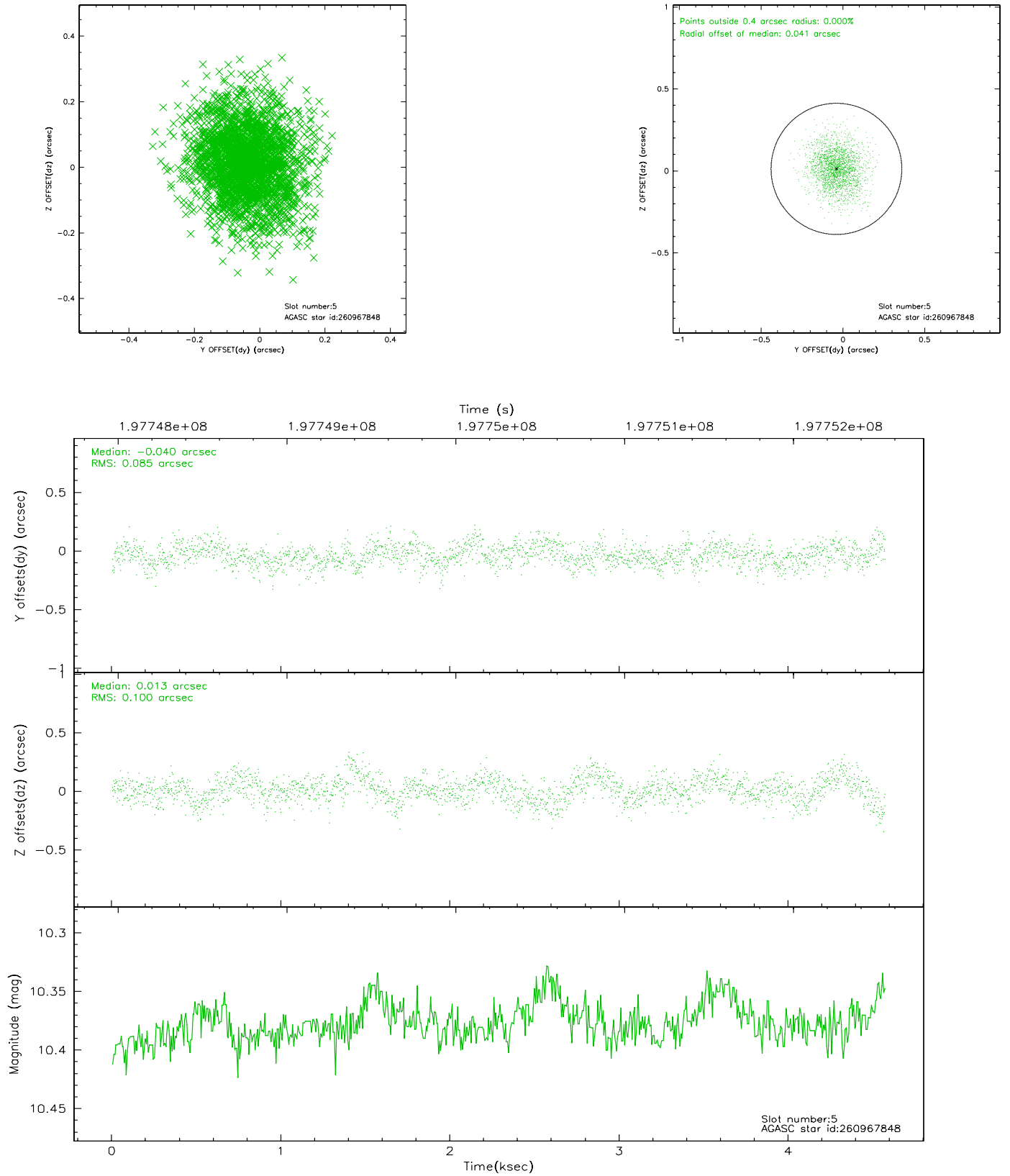
slot	status	id	mag	n_pts	med_dy	med_dz	dr1	dr2	ra	dec	mean_y	mean_z
0	FID	ACIS-S-2	7.10	1115	-0.027	-0.009	0.006	0.010	0.000000	0.000000	-760.60	-1730.99
1	FID	ACIS-S-4	7.20	1115	0.057	0.016	0.005	0.009	0.000000	0.000000	2152.11	176.18
2	FID	ACIS-S-5	7.23	1115	-0.061	0.002	0.006	0.010	0.000000	0.000000	-1811.78	171.30
3	GUIDE	260575136	9.51	2229	0.021	0.052	0.089	0.142	184.065390	28.836709	2085.64	914.60
4	OMITTED		0.00	0	0.000	0.000	0.000	0.000	0.000000	0.000000	0.00	0.00
5	GUIDE	260967848	10.38	2229	-0.040	0.013	0.140	0.231	184.894103	29.822741	-1566.58	-1538.91
6	GUIDE	260969480	9.07	2230	-0.017	0.145	0.083	0.134	184.329513	28.726397	1438.14	1572.00
7	GUIDE	260979504	6.11	2229	0.034	-0.215	0.082	0.133	184.377399	28.937186	1038.55	911.18

2.4 Star Slots

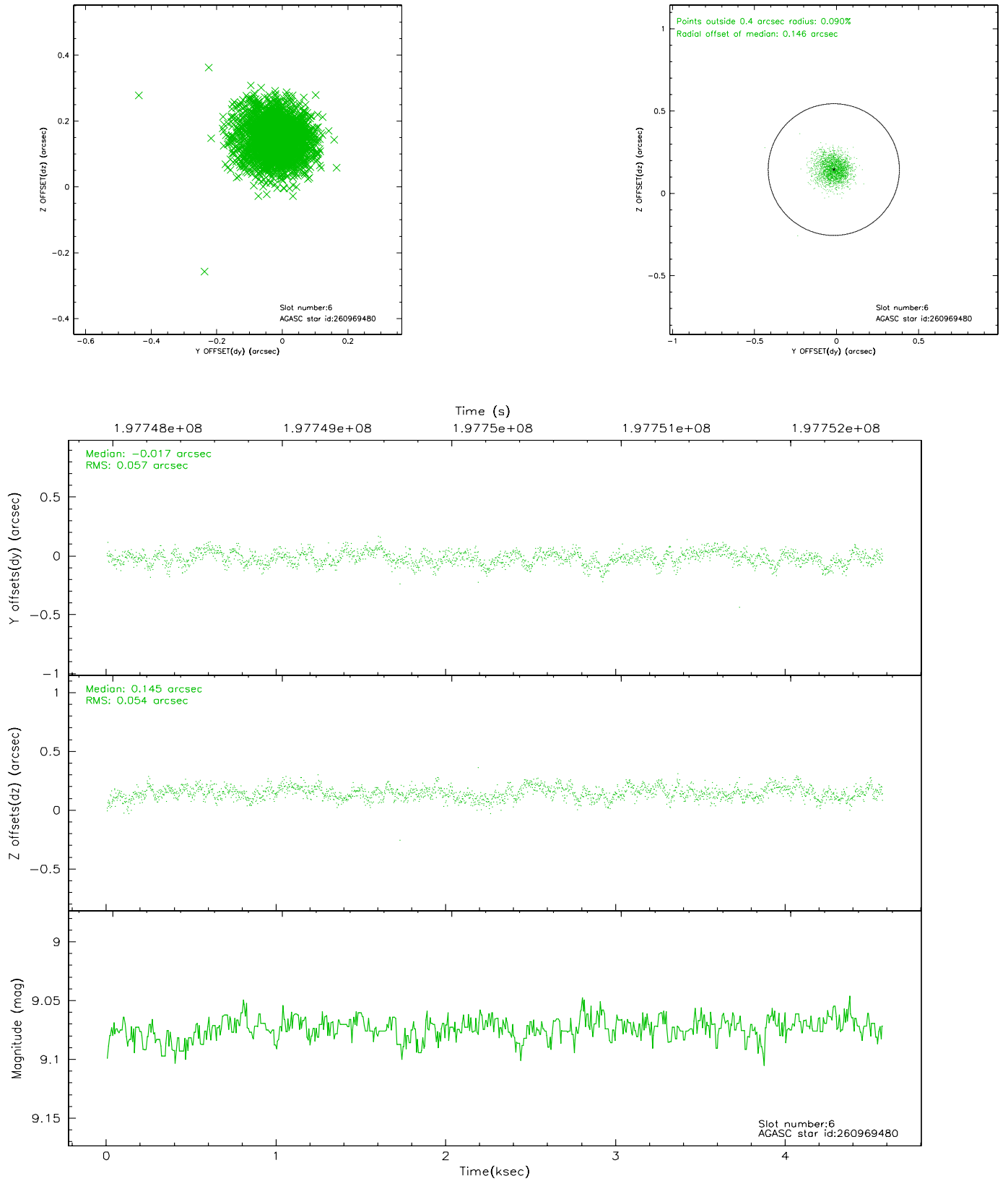
2.4.1 Slot 3



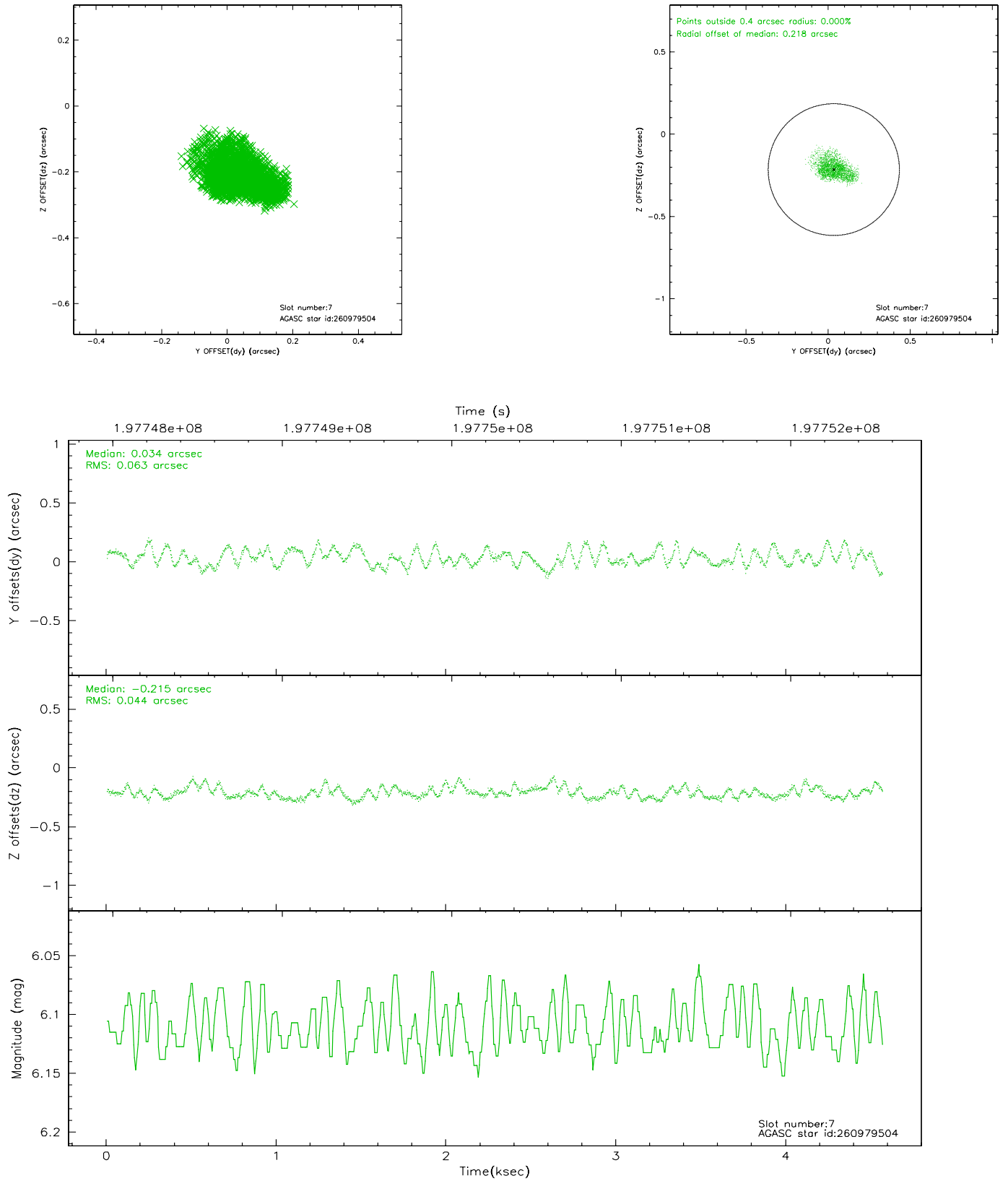
2.4.2 Slot 5



2.4.3 Slot 6

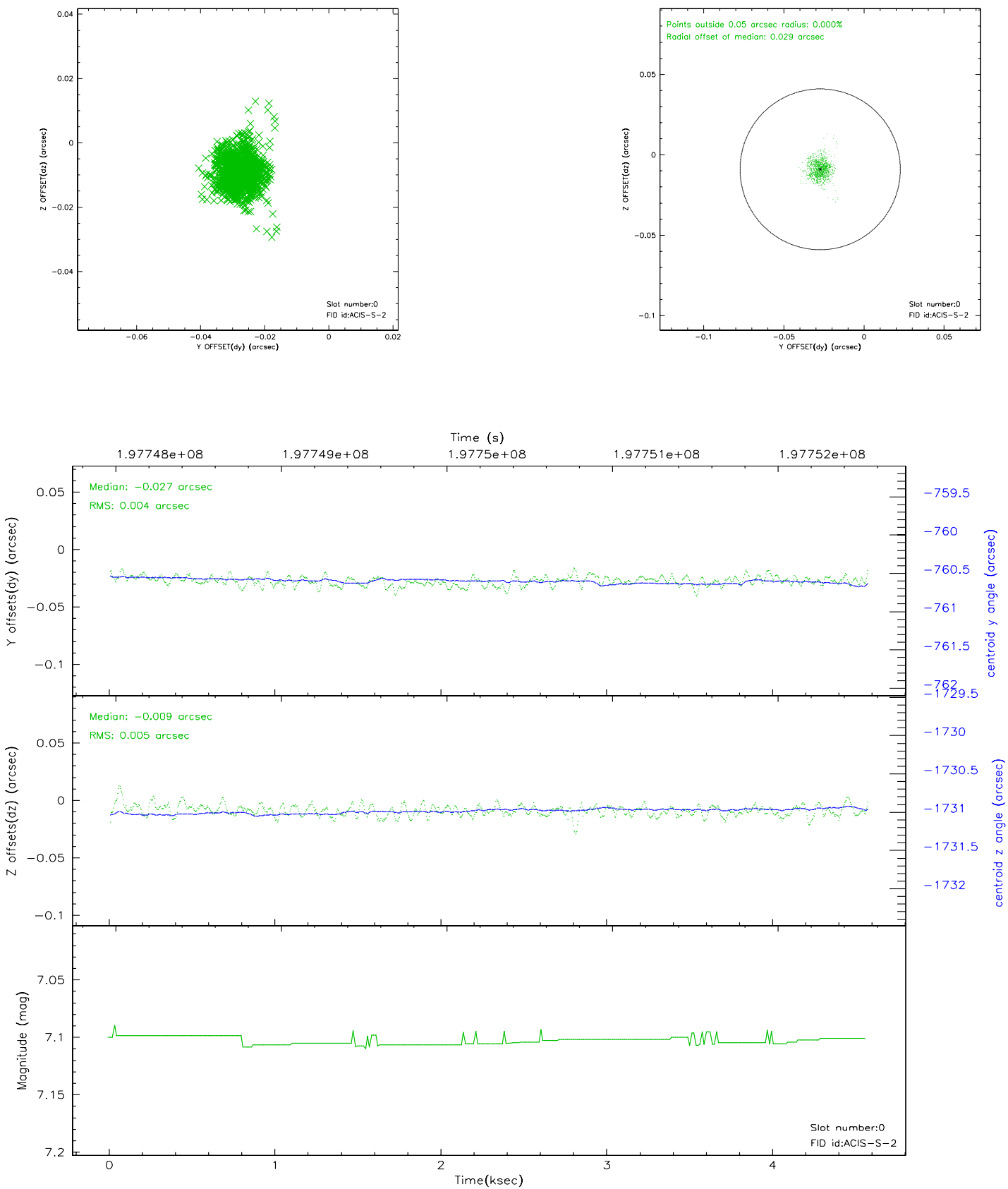


2.4.4 Slot 7

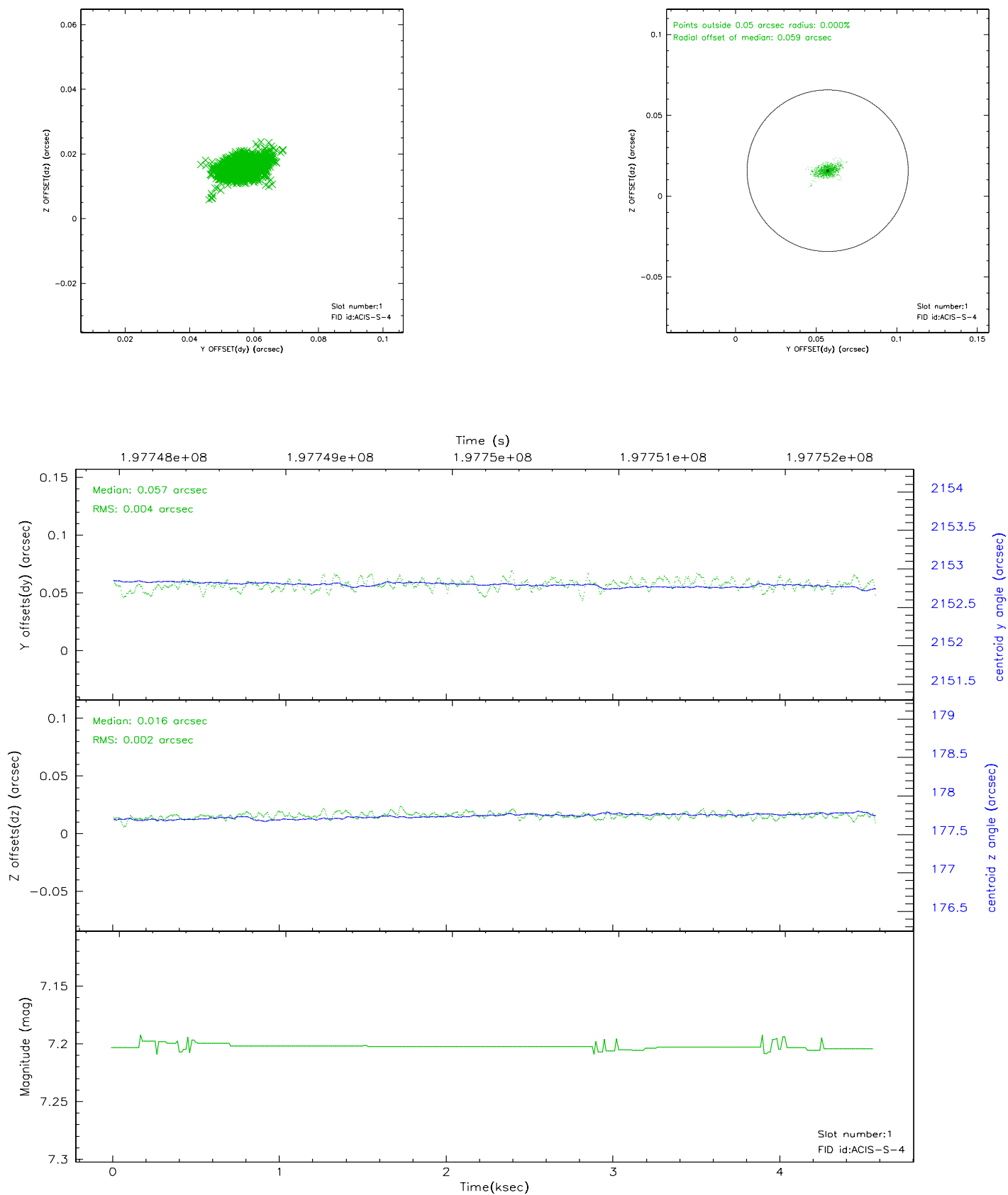


2.5 FID Slots

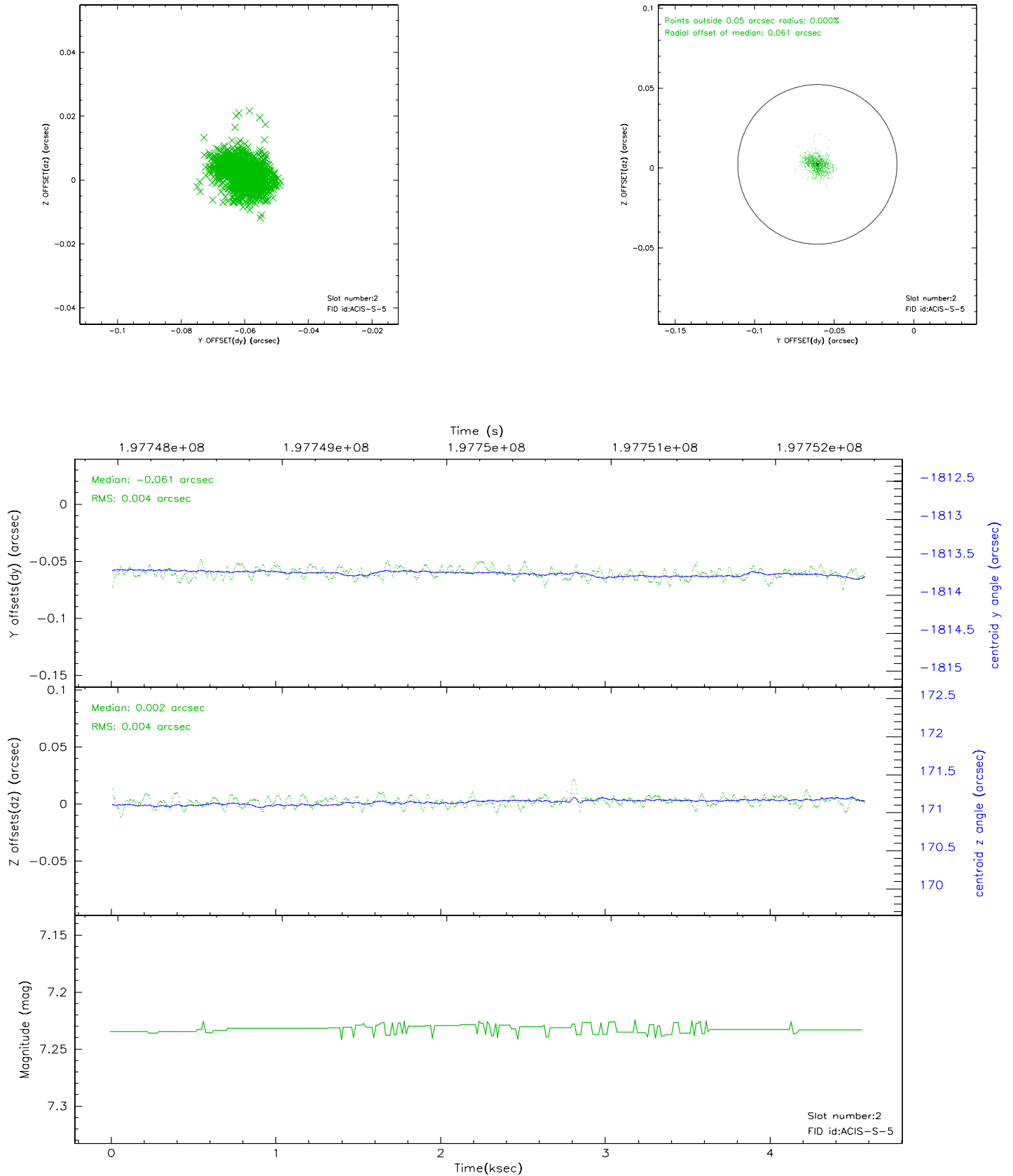
2.5.1 Slot 0



2.5.2 Slot 1



2.5.3 Slot 2



3 Point Sources

4.02 arcmin



A Summary

A.1 Status

V&V Scientist	Beth Sundheim
V&V Date (YYYY-MM-DD)	2010.10.04
V&V Edition	2
V&V Disposition and Status	OK
V&V Charge Time	4.568

A.2 Comments

The guide star in slot 4 was manually excluded from the processing due to poor data quality.