

V&V Reference Report

L2 ASCDS Version : 7.6.7.2

Observation 4752 - L2 Version 002
Chandra X-Ray Center

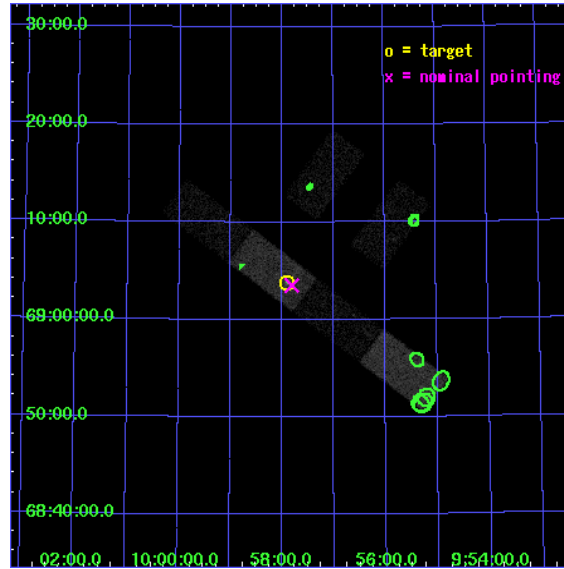
L2 Processing Date : Jun 1 2006

Contents

1	Front	2
2	OBI	3
2.1	OBI	3
2.1.1	Images	3
2.1.2	Bias	3
2.1.3	Parameters	4
2.1.4	Events	4
2.2	Compared Parameters	5
2.3	Aspect	6
2.4	Star Slots	9
2.4.1	Slot 3	9
2.4.2	Slot 4	10
2.4.3	Slot 6	11
2.4.4	Slot 7	12
2.5	FID Slots	13
2.5.1	Slot 0	13
2.5.2	Slot 1	14
2.5.3	Slot 2	15
3	Point Sources	16
A	Summary	17
A.1	Status	17
A.2	Comments	17

1 Front

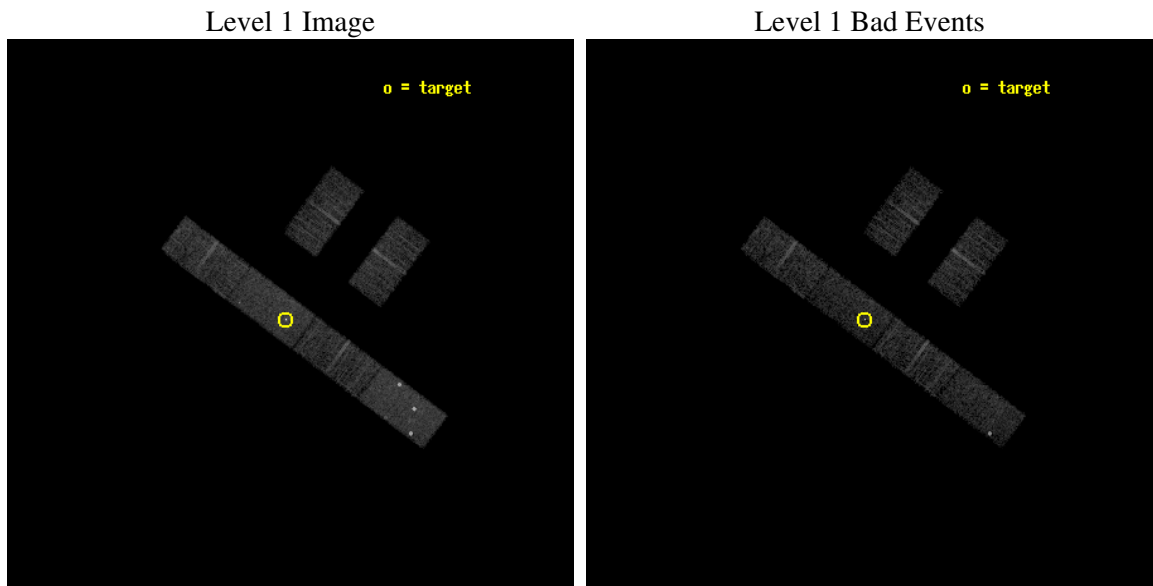
seq_num	600407
obs_id	4752
title	Observations of Intermediate Mass Black Hole Candidate Ultra-Luminous X-ray Sources
observer	Dr Jon Miller
object	M81 X-9 Obs 2
dtcycle	0
cycle	P
ra_targ	149.47625
dec_targ	69.062889
ra_nom	149.45224805336
dec_nom	69.058539951938
roll_nom	216.79563365847
revision	4
ontime	5151.6000341177
livetime	5036.761863627
ontime2	5151.6000341177
ontime3	5151.6000341177
ontime5	5151.6000341177
ontime6	5151.6000341177
ontime7	5151.6000341177
ontime8	5151.6000341177
l2events	30714



2 OBI

2.1 OBI

2.1.1 Images

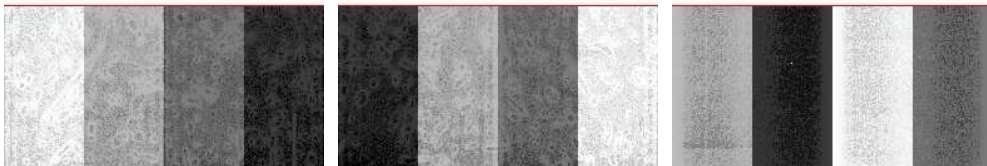


2.1.2 Bias

Chip 2

Chip 3

Chip 5



Chip 6

Chip 7

Chip 8



2.1.3 Parameters

obi_num	0
ascdsver	7.6.7.2
caldsver	3.2.2
date	2006-06-01T16:30:51
revision	4

sched_exp_time	5000.000000
ontime	6086.4066375196
ontime2	6086.4066076279
ontime3	6088.2476476431
ontime5	6086.4066375196
ontime6	6088.2476476431
ontime7	6086.4066375196
ontime8	6088.2476476431
l1events	169290

2.1.4 Events

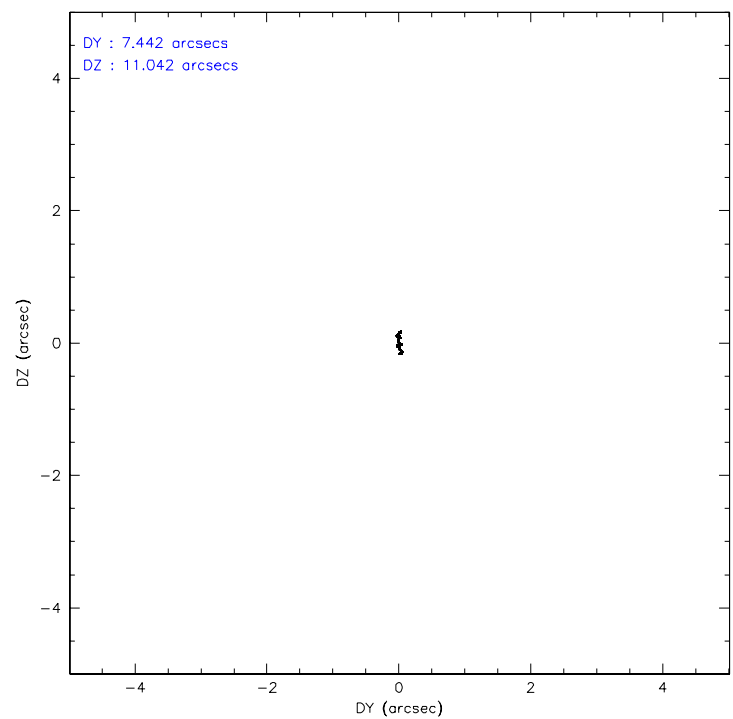
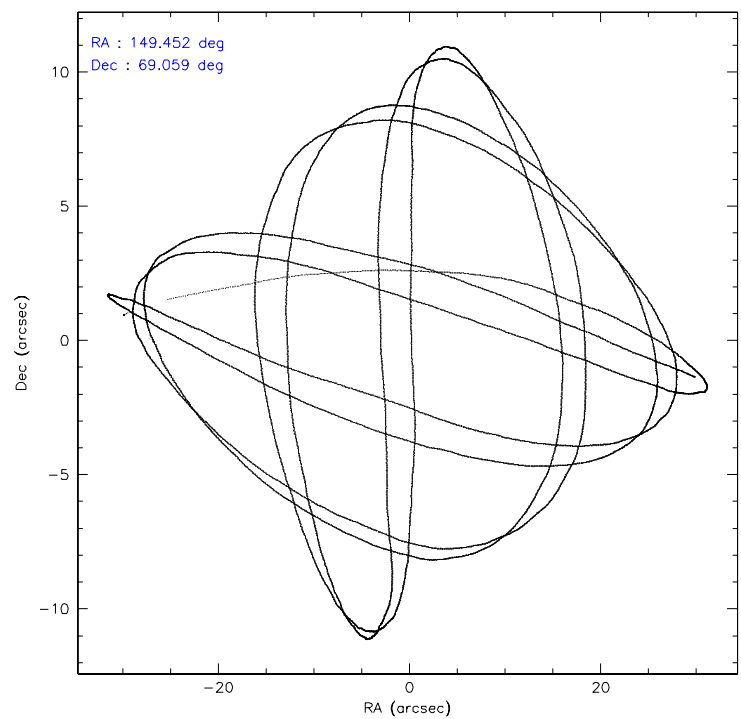
	ccd 2	ccd 3	ccd 5	ccd 6	ccd 7	ccd 8
level 1 events	23636	22181	38779	23379	33122	28193
rejected events	21185	19950	22313	21209	21125	23432
rejected %	89%	89%	57%	90%	63%	83%

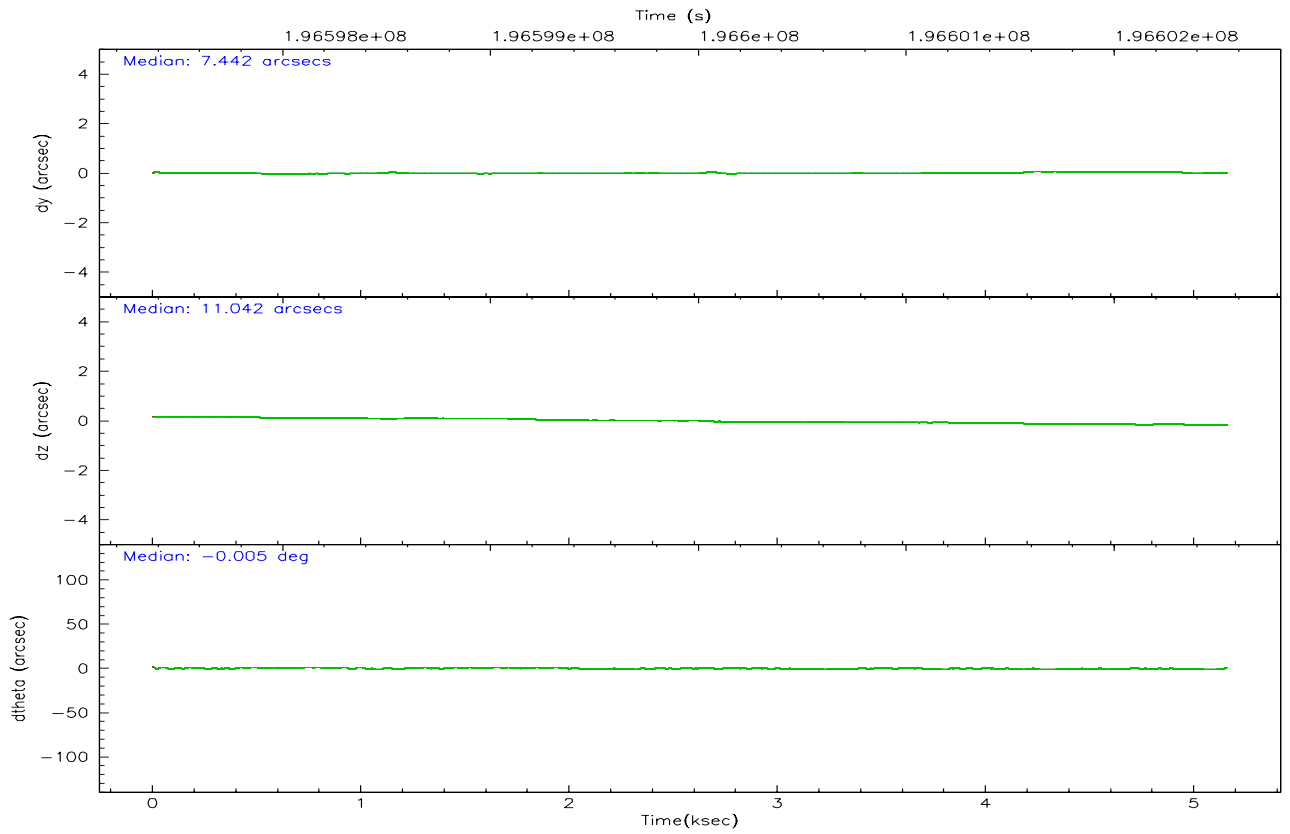
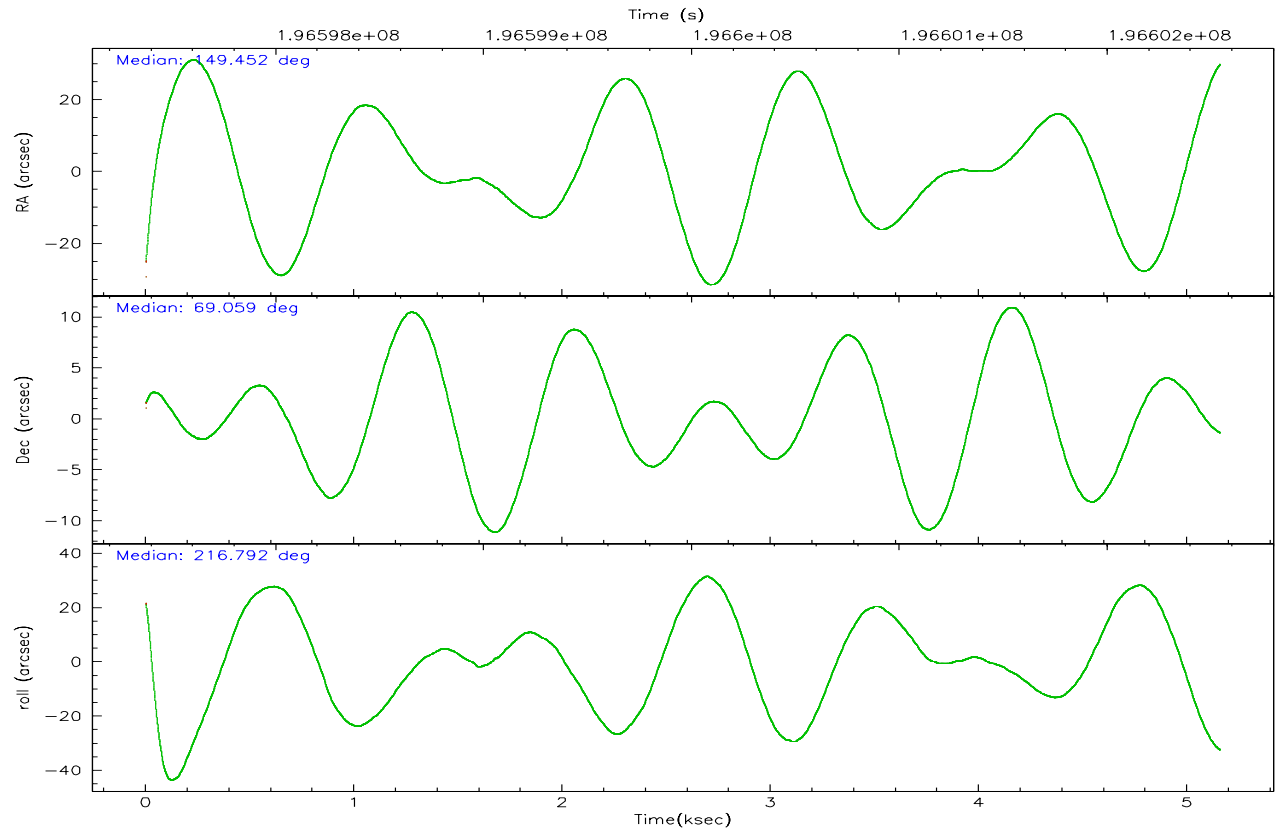
	ccd 2	ccd 3	ccd 5	ccd 6	ccd 7	ccd 8
grade 0 events	1300	1081	5654	965	1084	1811
	5%	4%	14%	4%	3%	6%
grade 1 events	9	14	28	13	73	13
	0%	0%	0%	0%	0%	0%
grade 2 events	520	458	5181	513	3422	1305
	2%	2%	13%	2%	10%	4%
grade 3 events	294	343	410	286	890	540
	1%	1%	1%	1%	2%	1%
grade 4 events	327	283	341	312	883	545
	1%	1%	0%	1%	2%	1%
grade 5 events	846	891	1903	998	2247	1239
	3%	4%	4%	4%	6%	4%
grade 6 events	466	463	7941	494	7612	1486
	1%	2%	20%	2%	22%	5%
grade 7 events	19874	18648	17321	19798	16911	21254
	84%	84%	44%	84%	51%	75%

2.2 Compared Parameters

Parameter	Planned	Actual	Parameter	Planned	Actual
Instrument	ACIS	ACIS	Obspar format version number	6	6
Detector	ACIS-235678	ACIS-235678	Obspar file type	PREDICTED	ACTUAL
Grating	NONE	NONE	Obspar update status	NONE	UPDATED
Data mode	FAINT	FAINT	On-chip summing requested	N	N
Observation mode	POINTING	POINTING	Subarray requested	1/2	1/2
Pointing RA	149.481161	149.4522480533624	Subarray start row	0	257
Pointing Dec	69.083713	69.05853995193768	Subarray row count	1024	512
Pointing Roll	216.611922	216.7956336584695	Alternating exposures requested	N	N
SIM focus pos (mm)	-0.684267	-0.6828225247311905	Primary exposure time	0.000000	1.8
SIM defocus (mm)	0	0.001444936568705701			
SIM translation stage pos (mm)	-190.132523	-190.1425803651734			
SIM translation stage offset (mm)	0	0.01005778216563158			
Observation start time	196597537.184000	196596234.9044			
Observation start date	2004-03-25T10:24:33	2004-03-25T10:03:54			
Observation end time	196602537.184000	196603286.39221			
Observation end date	2004-03-25T11:47:53	2004-03-25T12:01:26			
Read mode	TIMED	TIMED			

2.3 Aspect



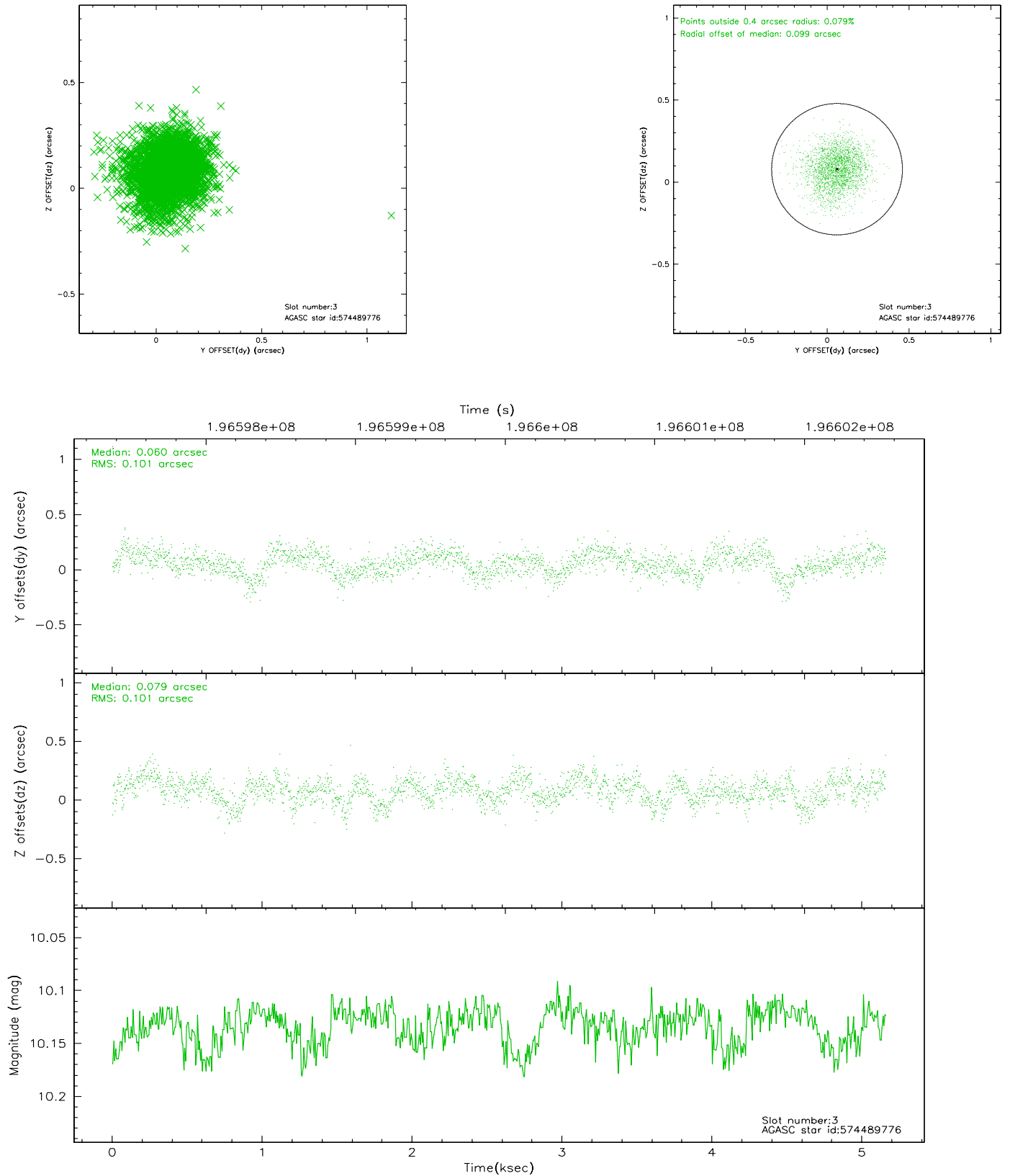


Slot Statistics

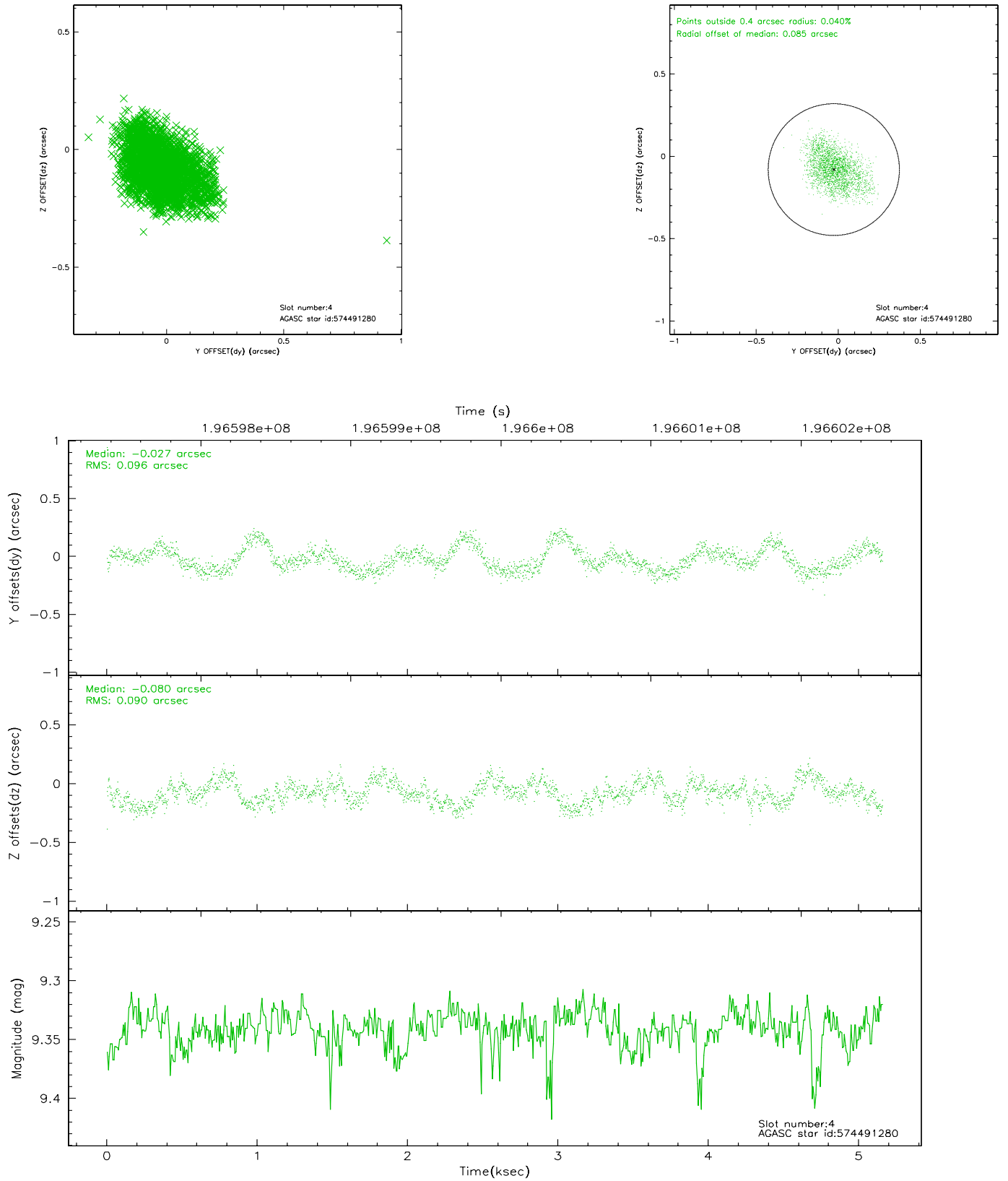
slot	status	id	mag	n_pts	med_dy	med_dz	dr1	dr2	ra	dec	mean_y	mean_z
0	FID	ACIS-S-2	7.10	1259	-0.021	0.019	0.007	0.012	0.000000	0.000000	-760.20	-1732.26
1	FID	ACIS-S-4	7.20	1259	0.022	0.005	0.006	0.012	0.000000	0.000000	2152.55	175.04
2	FID	ACIS-S-5	7.23	1259	-0.033	-0.015	0.006	0.011	0.000000	0.000000	-1811.58	169.97
3	GUIDE	574489776	10.13	2516	0.060	0.079	0.151	0.242	148.323662	69.046710	1267.87	-792.88
4	GUIDE	574491280	9.34	2517	-0.027	-0.080	0.141	0.226	148.611567	69.450135	92.58	-1720.83
5	OMITTED		0.00	0	0.000	0.000	0.000	0.000	0.000000	0.000000	0.00	0.00
6	GUIDE	574496080	9.92	2512	-0.099	-0.094	0.135	0.219	149.336129	69.802025	-1396.71	-2184.02
7	GUIDE	574496312	10.27	2511	0.063	0.087	0.179	0.271	149.547505	68.718299	715.02	1106.86

2.4 Star Slots

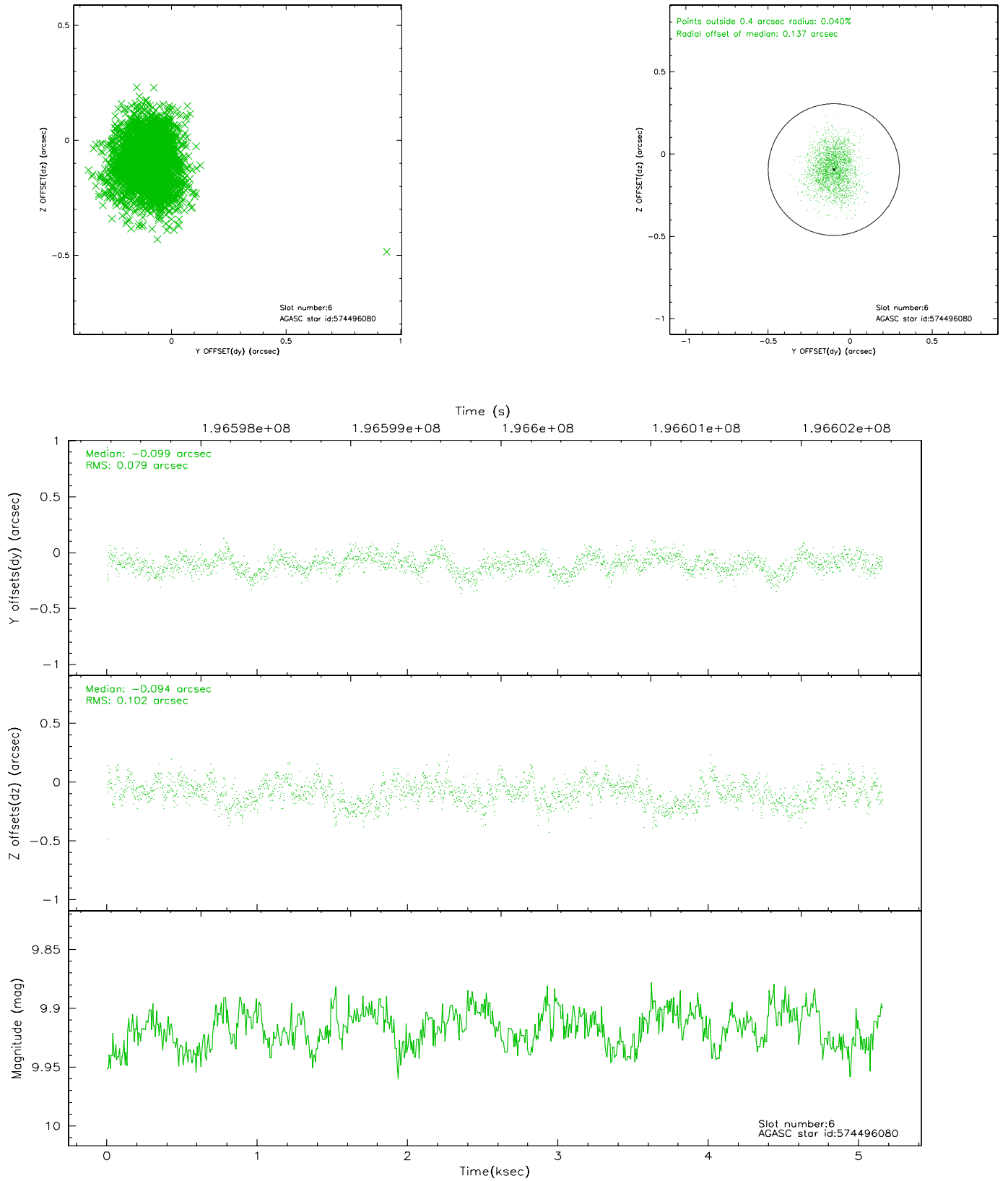
2.4.1 Slot 3



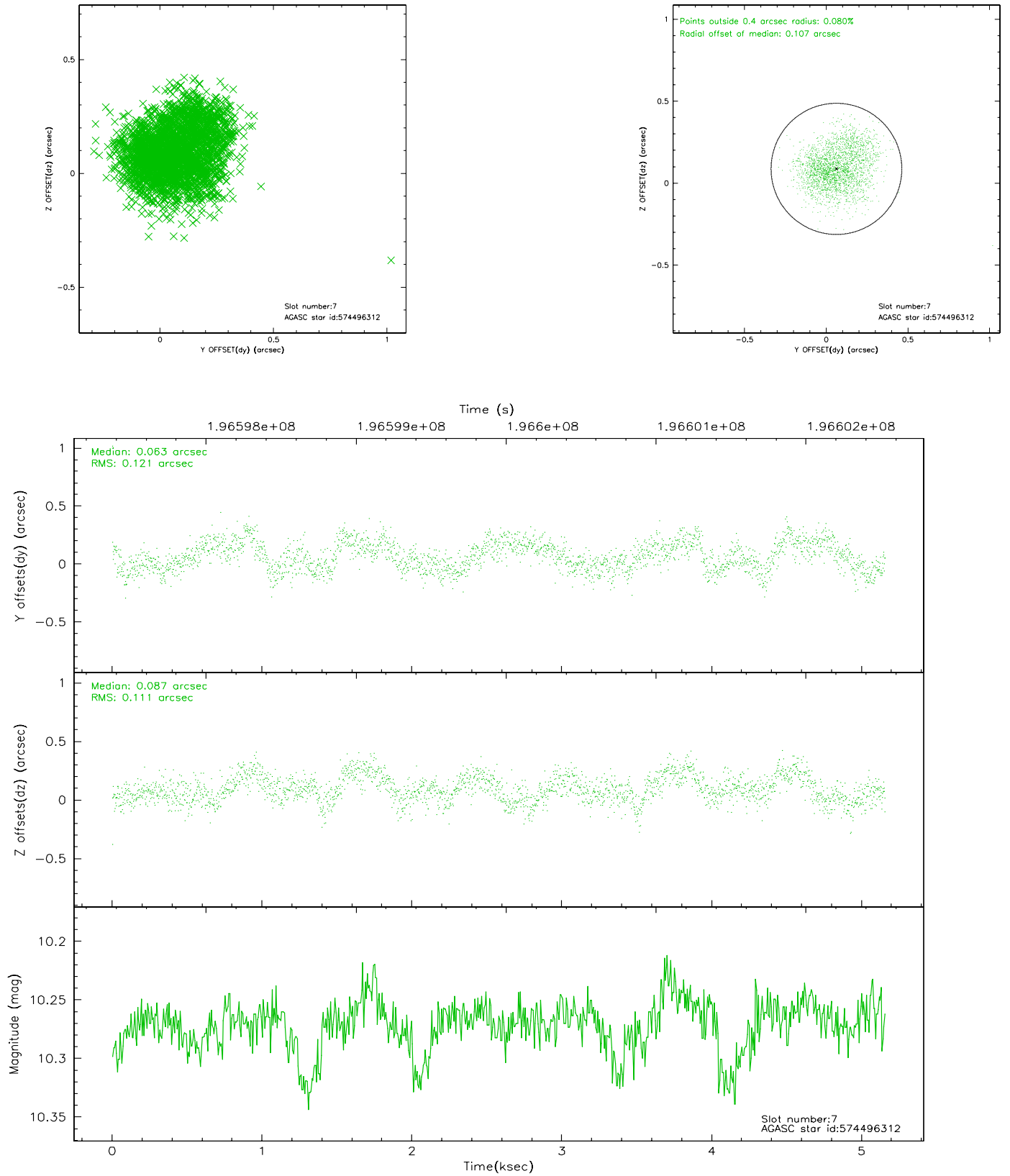
2.4.2 Slot 4



2.4.3 Slot 6

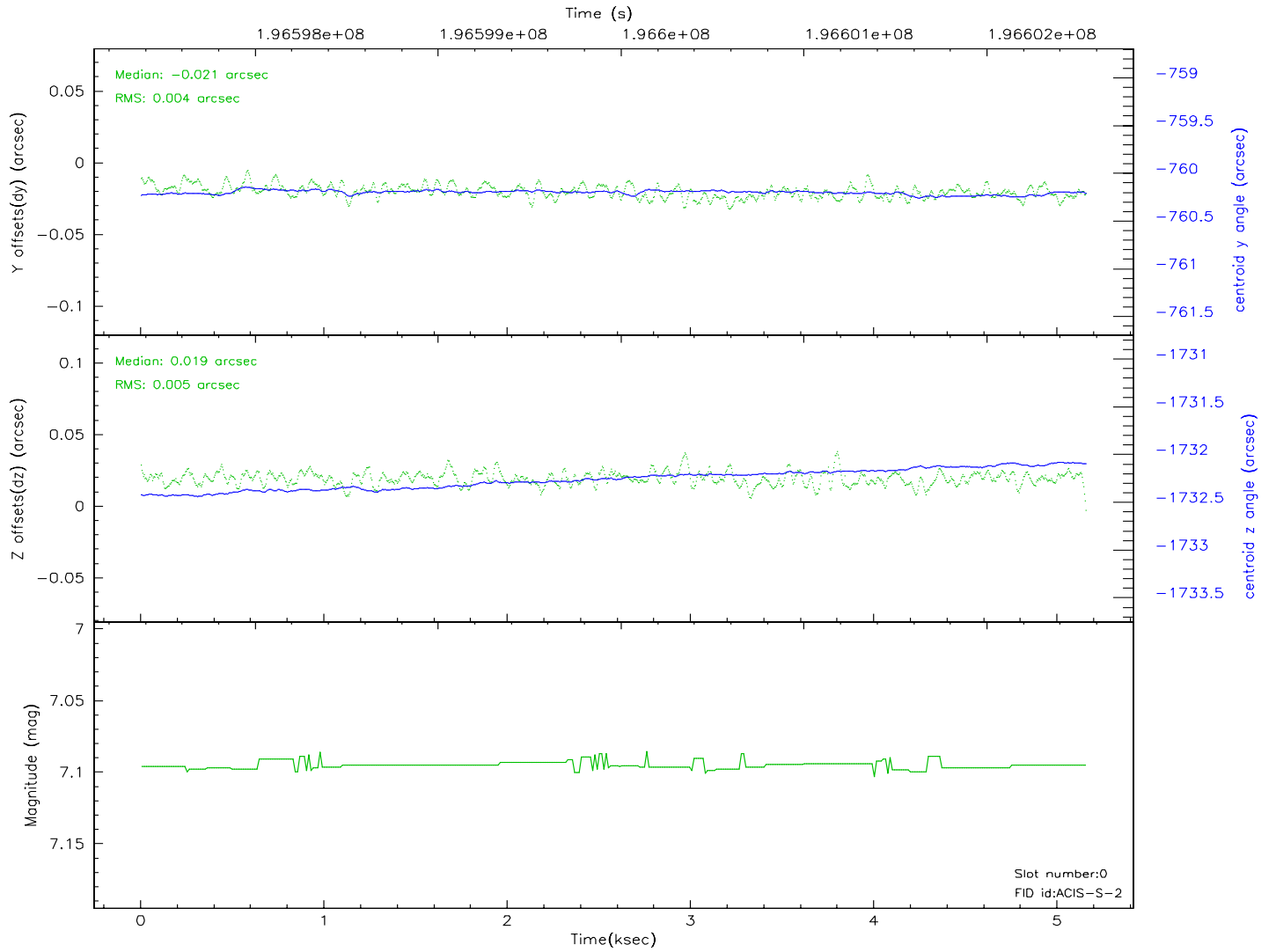
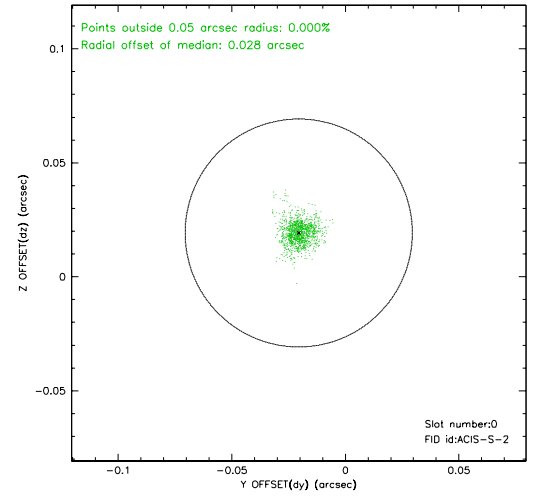
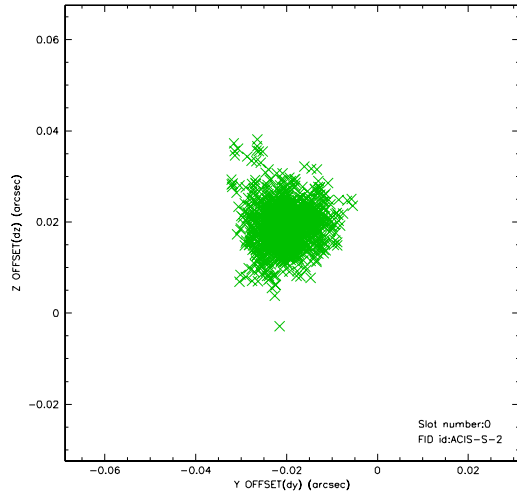


2.4.4 Slot 7

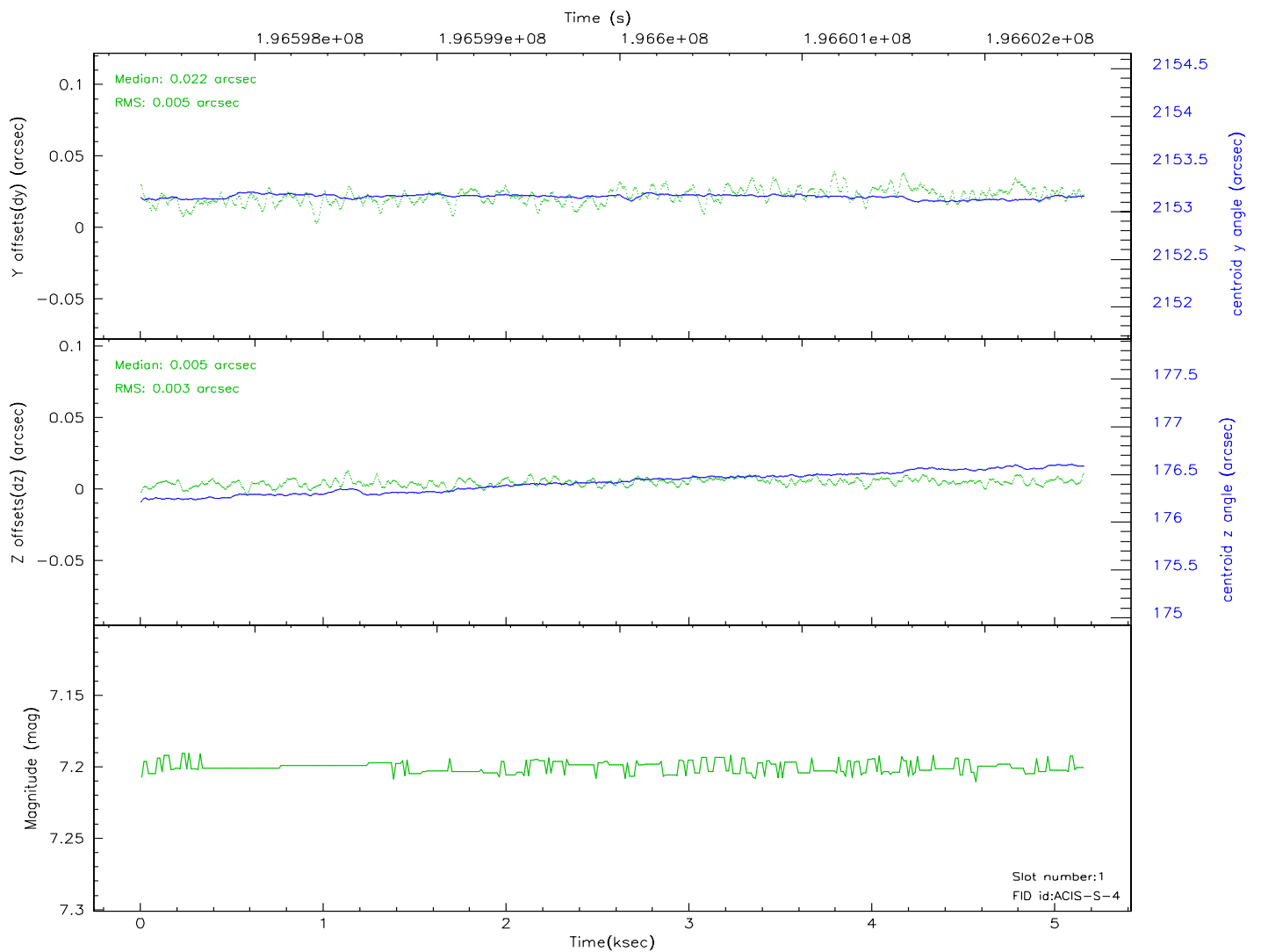
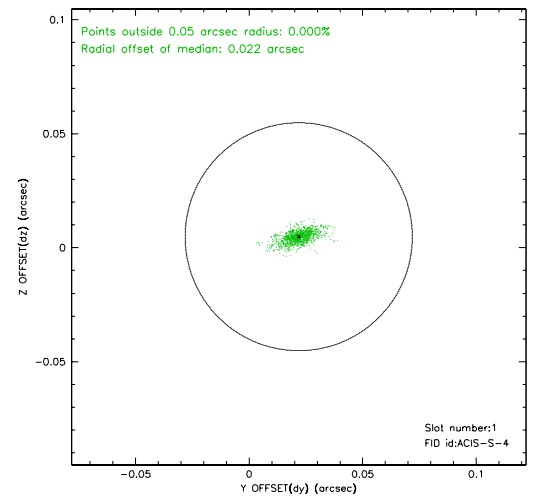
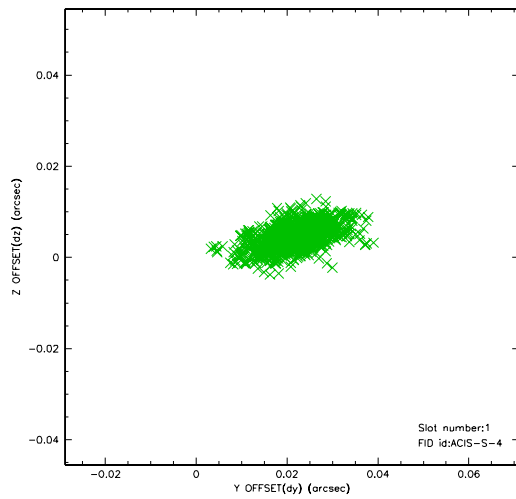


2.5 FID Slots

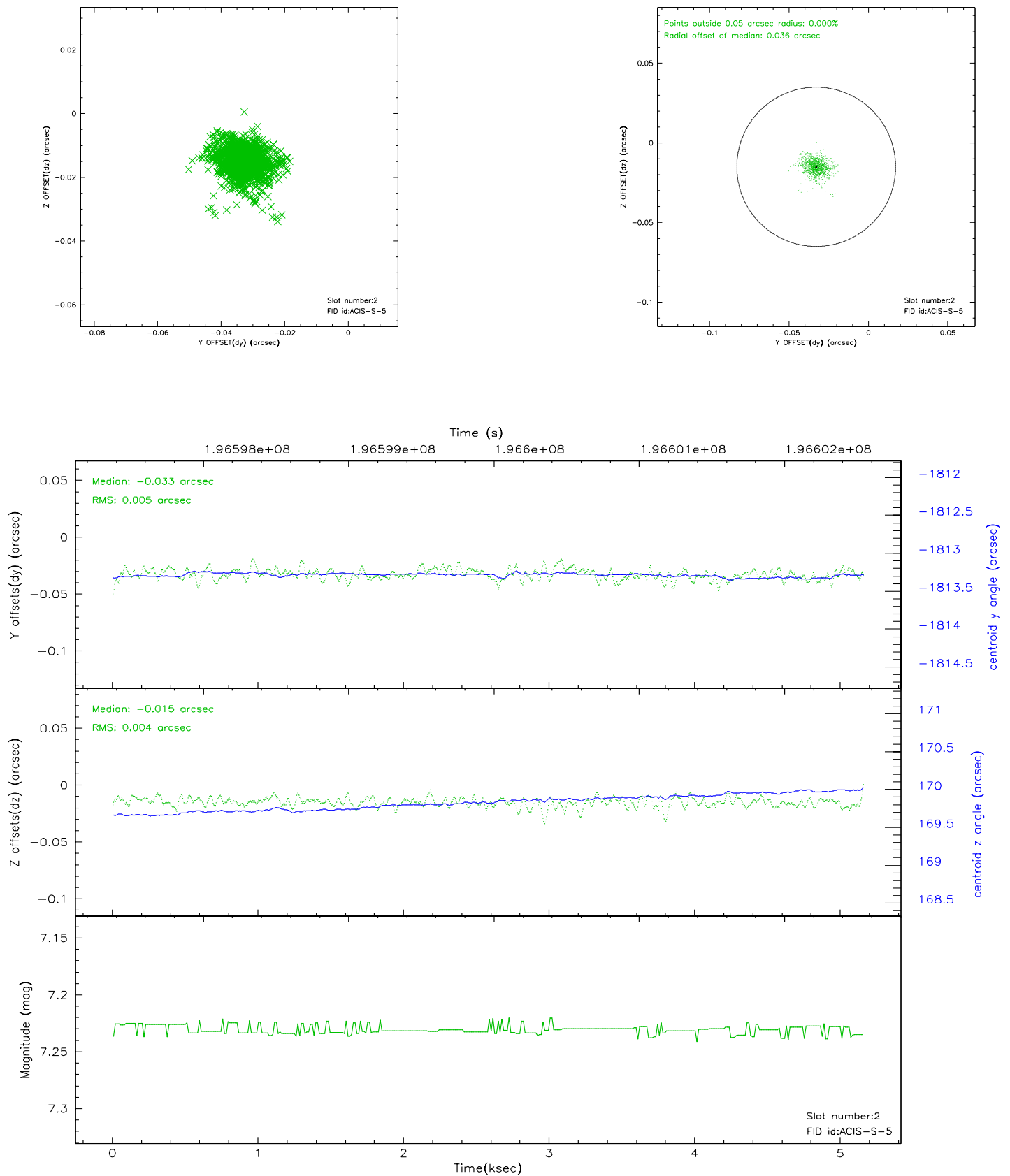
2.5.1 Slot 0



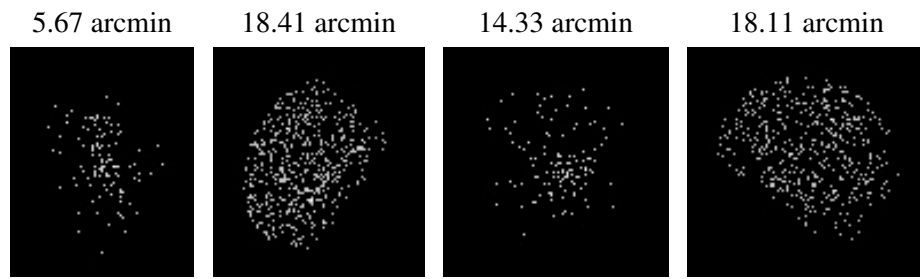
2.5.2 Slot 1



2.5.3 Slot 2



3 Point Sources



A Summary

A.1 Status

V&V Scientist	Jen Lauer
V&V Date (YYYY-MM-DD)	2006.06.04
V&V Edition	1
V&V Disposition and Status	OK
V&V Charge Time	5.151

A.2 Comments

Window preference not met for the first half hour of the observation.