

V&V Reference Report

L2 ASCDS Version : 7.6.7

Observation 4742 - L2 Version 002
Chandra X-Ray Center

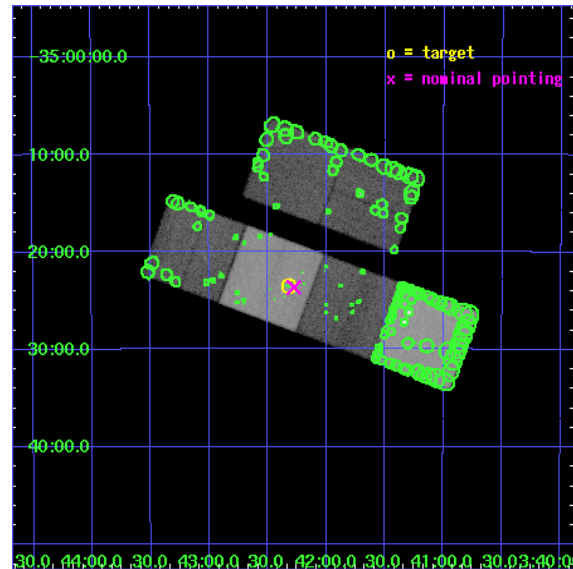
L2 Processing Date: Mar 2 2006

Contents

1	Front	2
2	OBI	3
2.1	OBI	3
2.1.1	Images	3
2.1.2	Bias	3
2.1.3	Parameters	4
2.1.4	Events	4
2.2	Compared Parameters	5
2.3	Aspect	6
2.4	Star Slots	9
2.4.1	Slot 3	9
2.4.2	Slot 4	10
2.4.3	Slot 5	11
2.4.4	Slot 6	12
2.4.5	Slot 7	13
2.5	FID Slots	14
2.5.1	Slot 0	14
2.5.2	Slot 1	15
2.5.3	Slot 2	16
3	Point Sources	17
A	Summary	18
A.1	Status	18
A.2	Comments	18

1 Front

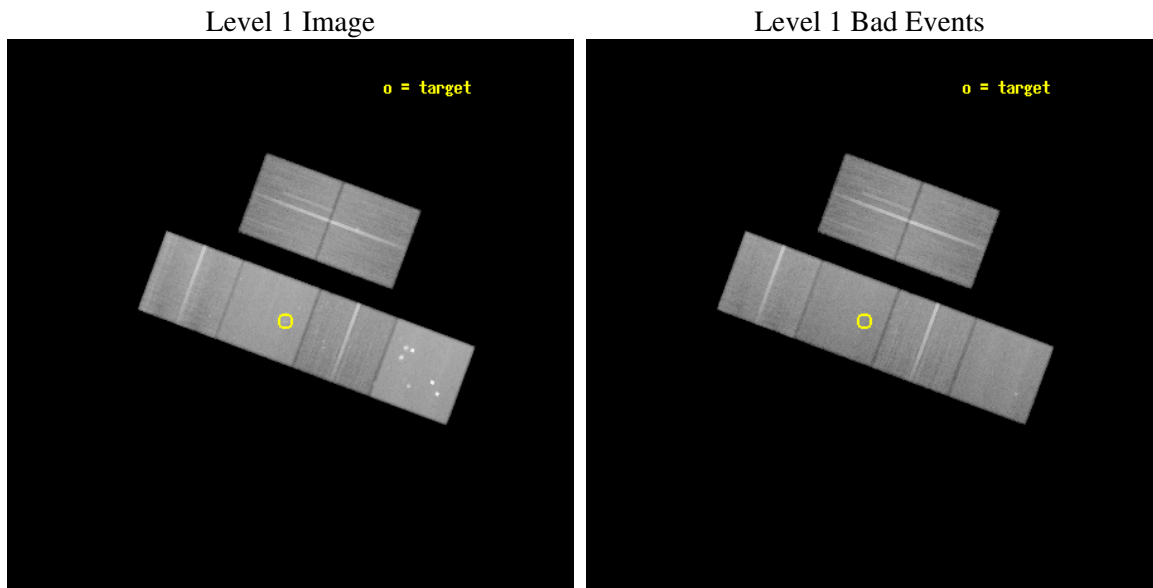
seq_num	600397
obs_id	4742
title	Observing LMXBs in High Globular Cluster Specific Frequency Elliptical Galaxies
observer	Dr. Jimmy Irwin
object	NGC1427
dtcycle	0
cycle	P
ra_targ	55.580833
dec_targ	-35.392778
ra_nom	55.569188844492
dec_nom	-35.394481501434
roll_nom	200.28102596321
revision	2
ontime	51695.999807417
livetime	51041.393930262
ontime2	51683.035866529
ontime3	51686.276876658
ontime5	51695.999807417
ontime6	51692.758837134
ontime7	51695.999807417
ontime8	51689.517896712
l2events	632203



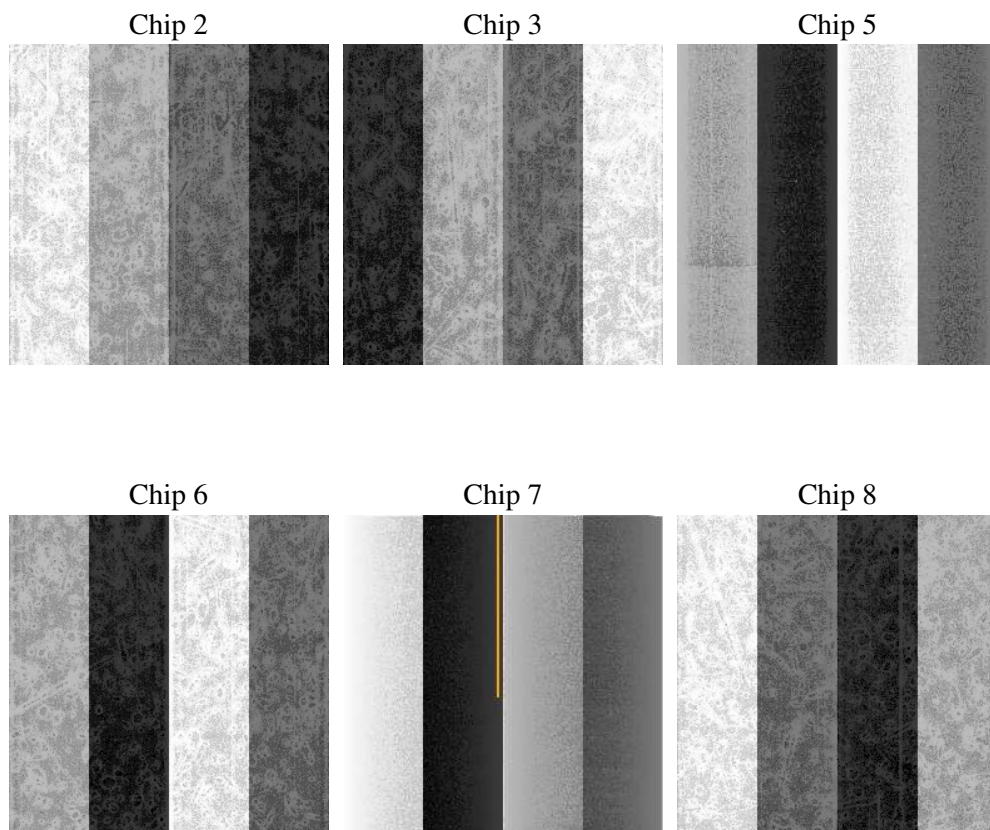
2 OBI

2.1 OBI

2.1.1 Images



2.1.2 Bias



2.1.3 Parameters

obi_num	0
ascdsver	7.6.7
caldsver	3.2.1
date	2006-03-02T14:11:57
revision	2

sched_exp_time	51557.240000
ontime	51875.463351876
ontime2	51862.499410987
ontime3	51865.740391225
ontime5	51875.463351876
ontime6	51872.2223517
ontime7	51875.463351876
ontime8	51868.98144117
l1events	2789736

2.1.4 Events

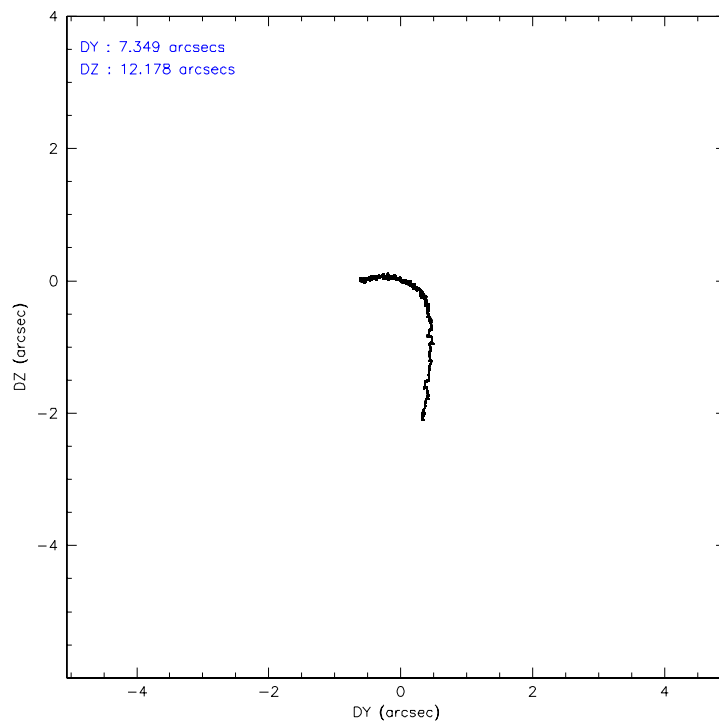
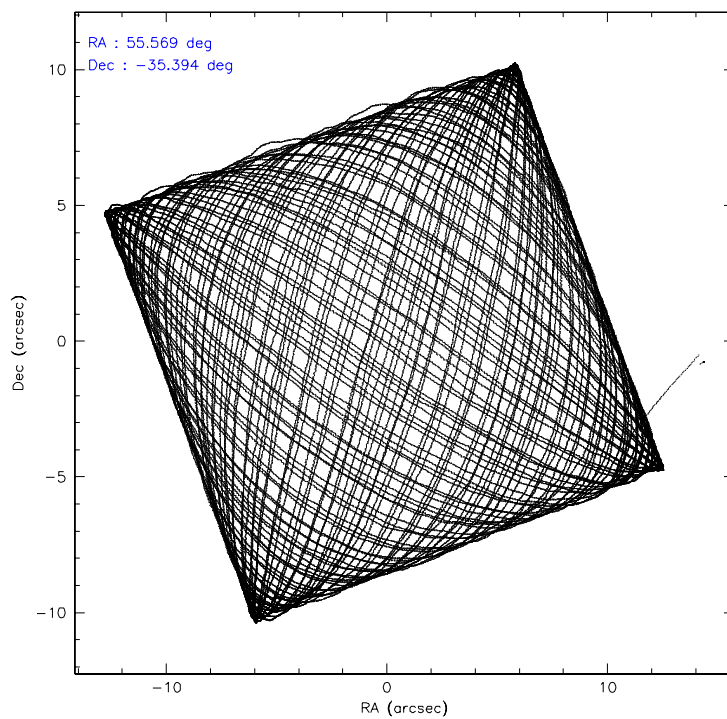
	ccd 2	ccd 3	ccd 5	ccd 6	ccd 7	ccd 8
level 1 events	393480	374875	609560	393141	530051	488629
rejected events	343239	328067	326423	342733	325207	381970
rejected %	87%	87%	53%	87%	61%	78%

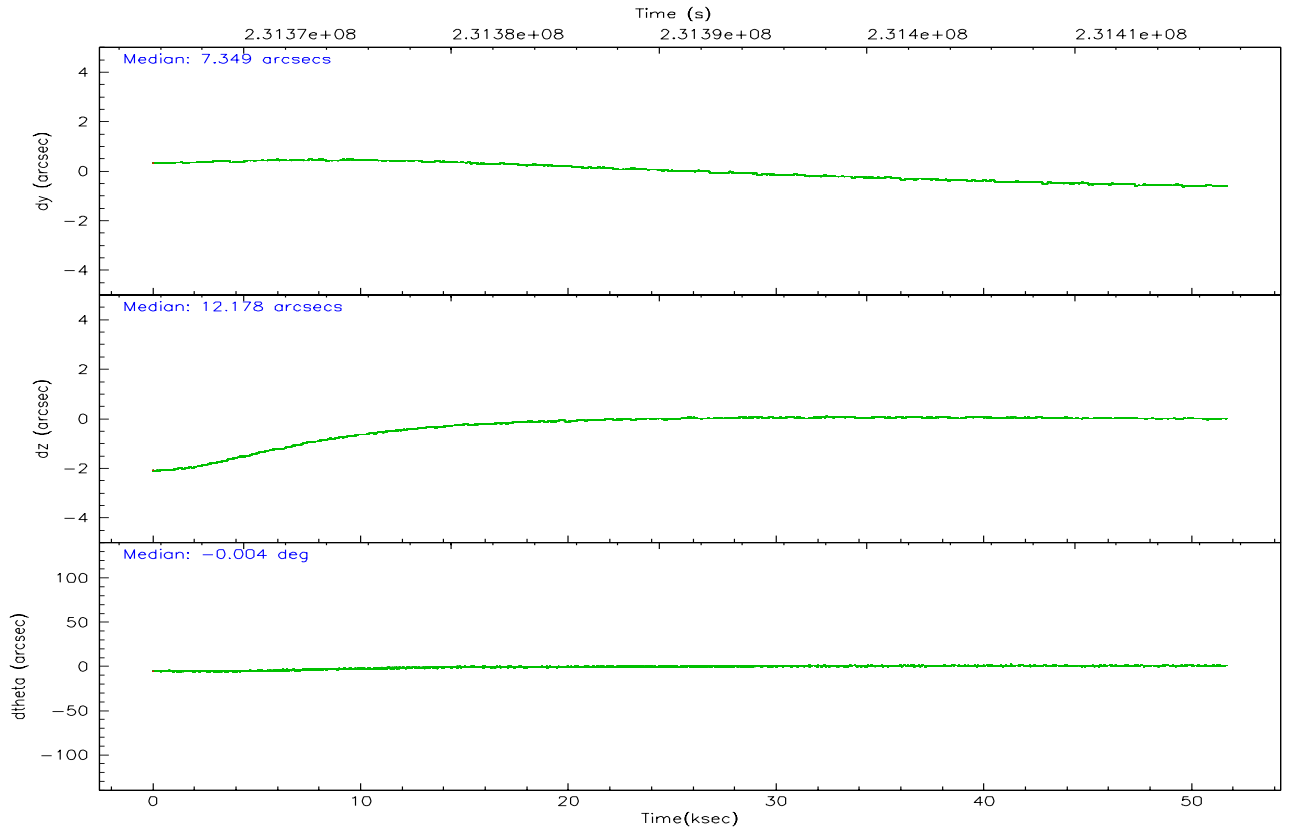
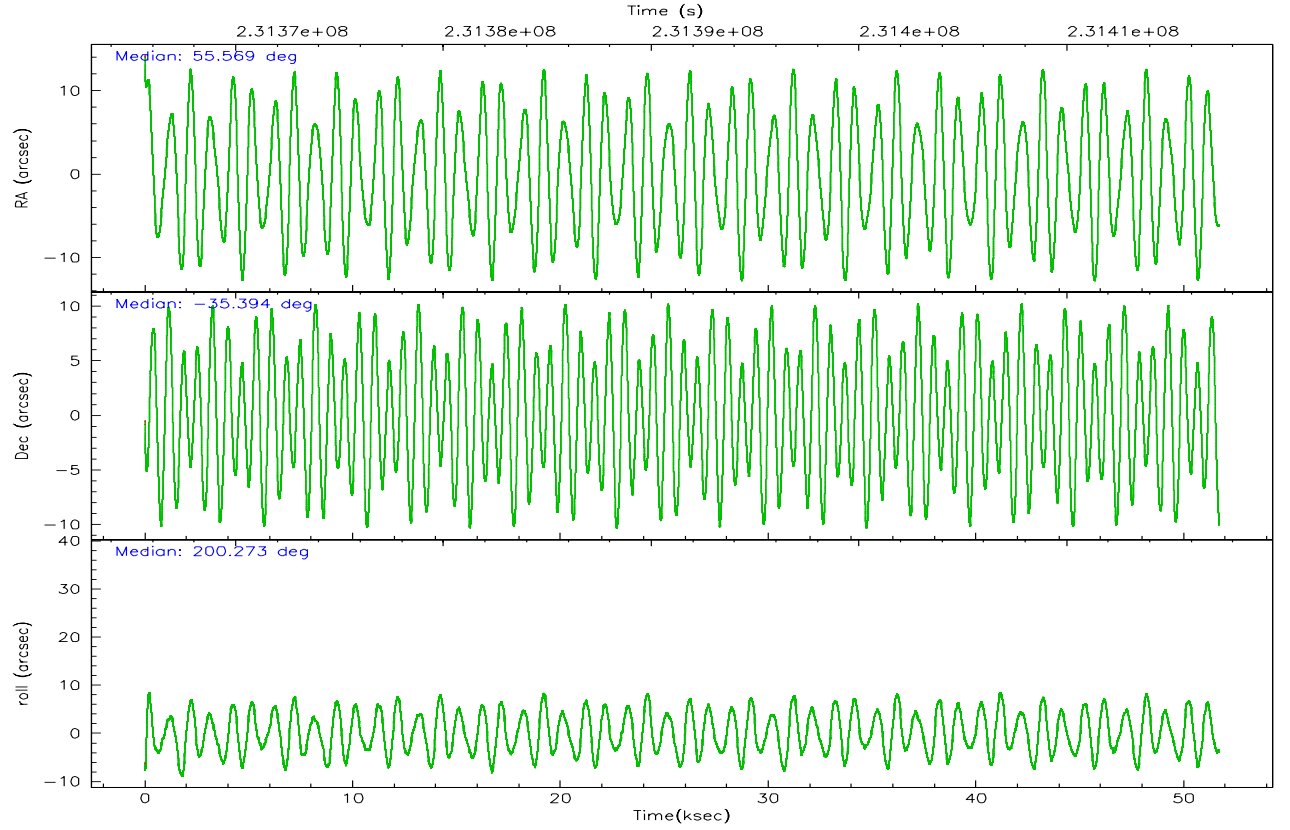
	ccd 2	ccd 3	ccd 5	ccd 6	ccd 7	ccd 8
grade 0 events	23867	21400	38932	22207	12851	34220
	6%	5%	6%	5%	2%	7%
grade 1 events	283	226	885	215	322	346
	0%	0%	0%	0%	0%	0%
grade 2 events	10010	8783	84203	9945	51380	23508
	2%	2%	13%	2%	9%	4%
grade 3 events	4426	4455	6732	4611	10378	11095
	1%	1%	1%	1%	1%	2%
grade 4 events	4442	4332	6259	4472	10096	10449
	1%	1%	1%	1%	1%	2%
grade 5 events	15716	17320	27104	17952	34690	23636
	3%	4%	4%	4%	6%	4%
grade 6 events	7649	7983	148027	9341	120849	27639
	1%	2%	24%	2%	22%	5%
grade 7 events	327087	310376	297418	324398	289485	357736
	83%	82%	48%	82%	54%	73%

2.2 Compared Parameters

Parameter	Planned	Actual	Parameter	Planned	Actual
Instrument	ACIS	ACIS	Obspar format version number	6	6
Detector	ACIS-235678	ACIS-235678	Obspar file type	PREDICTED	ACTUAL
Grating	NONE	NONE	Obspar update status	NONE	UPDATED
Data mode	VFAINT	VFAINT	On-chip summing requested	N	N
Observation mode	POINTING	POINTING	Subarray requested	NONE	NONE
Pointing RA	55.590140	55.56918884449248	Alternating exposures requested	N	N
Pointing Dec	-35.373311	-35.39448150143365	Primary exposure time	0.000000	3.2
Pointing Roll	200.136534	200.2810259632105			
SIM focus pos (mm)	-0.684267	-0.6828225247311905			
SIM defocus (mm)	0	0.001444936568705701			
SIM translation stage pos (mm)	-190.132523	-190.1400660498719			
SIM translation stage offset (mm)	0	0.00754346686406393			
Observation start time	231365784.184000	231364645.94738			
Observation start date	2005-05-01T20:15:20	2005-05-01T19:57:25			
Observation end time	231417342.184000	231417566.18729			
Observation end date	2005-05-02T10:34:38	2005-05-02T10:39:26			
Read mode	TIMED	TIMED			

2.3 Aspect



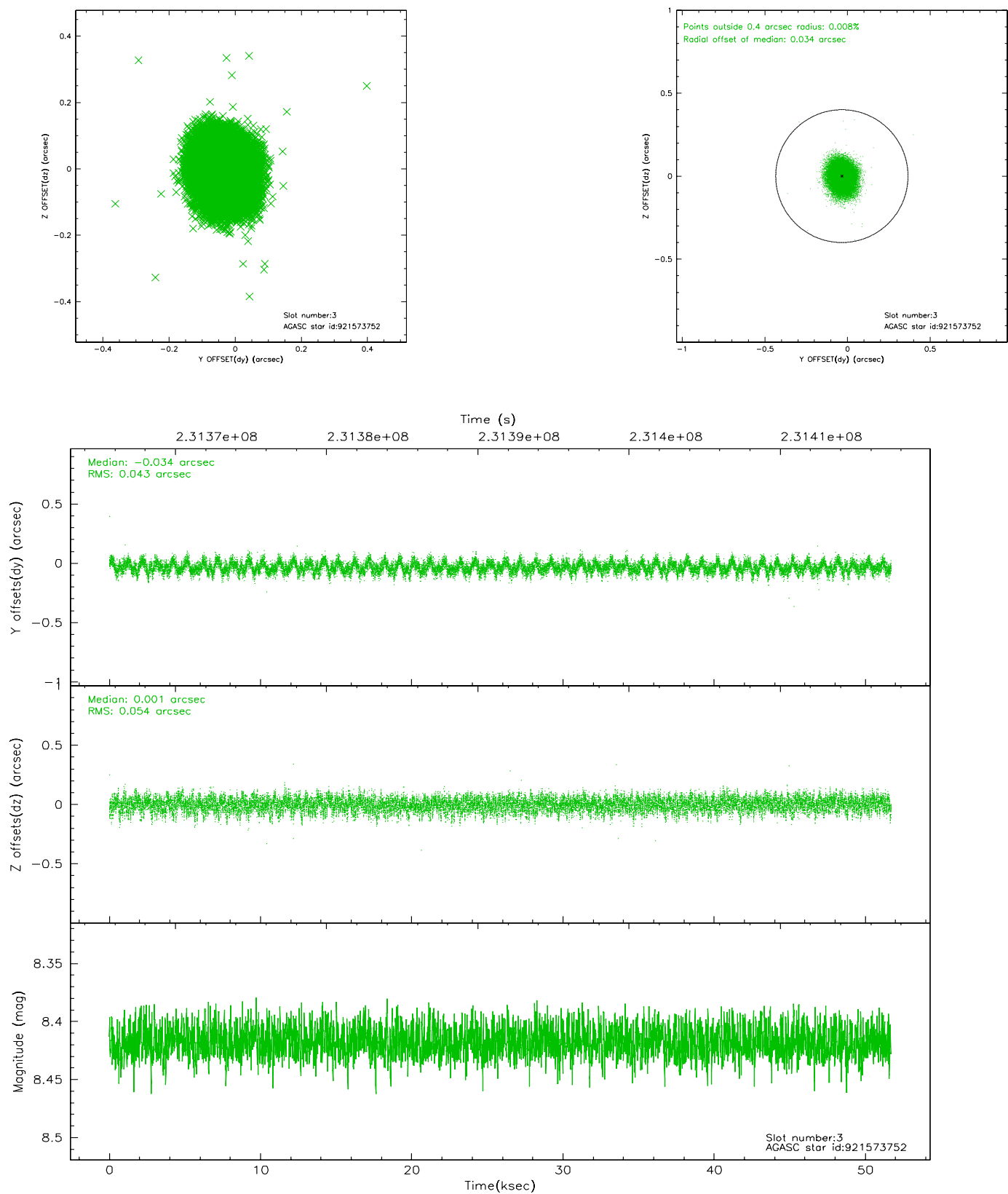


Slot Statistics

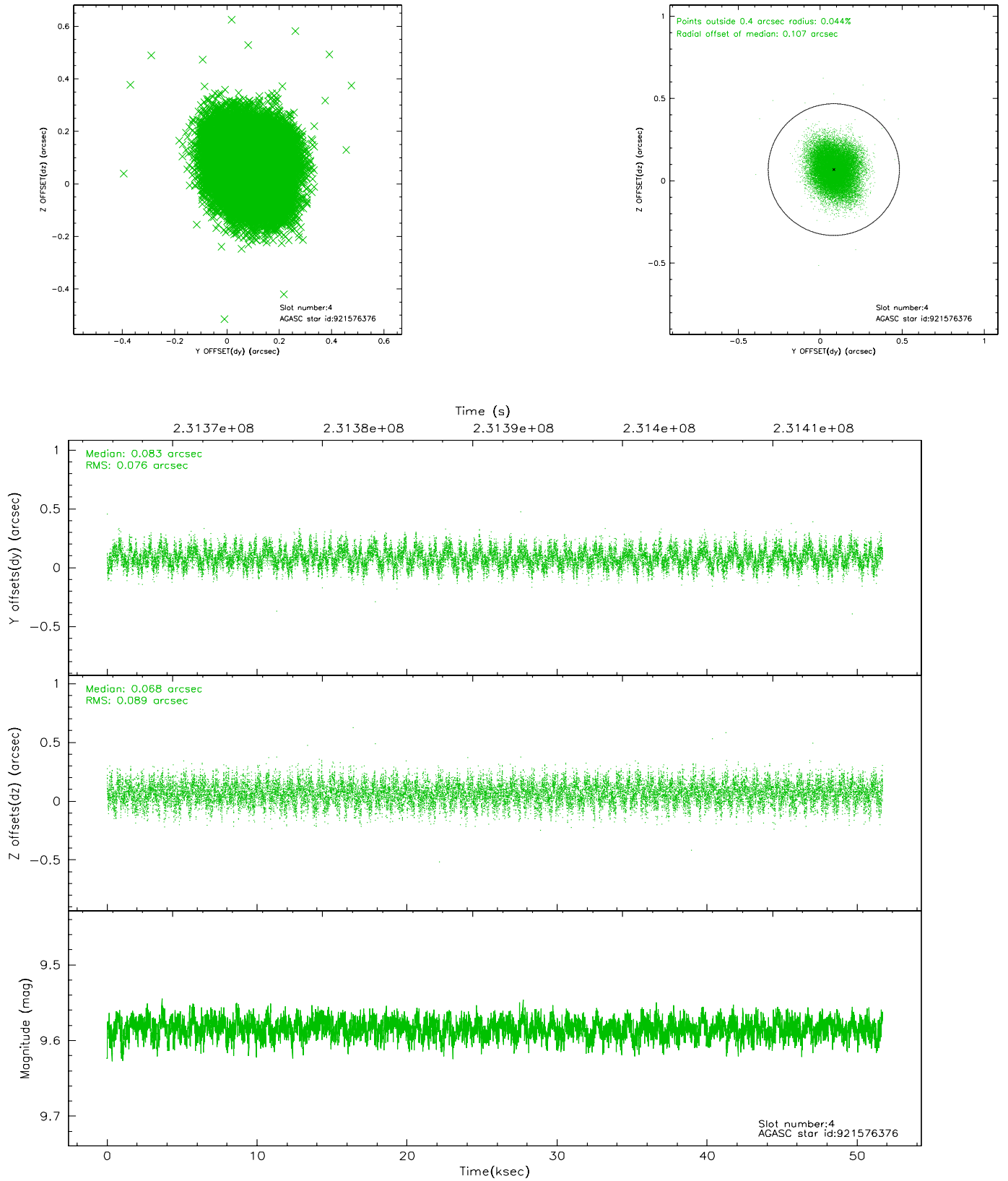
slot	status	id	mag	n_pts	med_dy	med_dz	dr1	dr2	ra	dec	mean_y	mean_z
0	FID	ACIS-S-2	7.10	12609	-0.012	-0.003	0.012	0.025	0.000000	0.000000	-760.10	-1733.17
1	FID	ACIS-S-4	7.20	12610	0.029	0.007	0.016	0.031	0.000000	0.000000	2153.23	175.35
2	FID	ACIS-S-5	7.23	12611	-0.052	0.005	0.018	0.025	0.000000	0.000000	-1813.01	168.99
3	GUIDE	921573752	8.42	25215	-0.034	0.001	0.074	0.119	55.297577	-34.906150	233.19	-1874.83
4	GUIDE	921576376	9.58	25205	0.083	0.068	0.126	0.200	55.579902	-34.722200	-777.69	-2211.14
5	GUIDE	921963584	9.54	25126	-0.027	-0.035	0.104	0.167	55.242973	-35.012099	514.48	-1571.56
6	GUIDE	921965352	9.67	25199	0.079	-0.113	0.109	0.179	56.101758	-35.771375	-908.26	1863.80
7	GUIDE	921966528	6.79	25220	-0.101	0.084	0.065	0.109	54.675841	-35.204254	2320.35	-1484.98

2.4 Star Slots

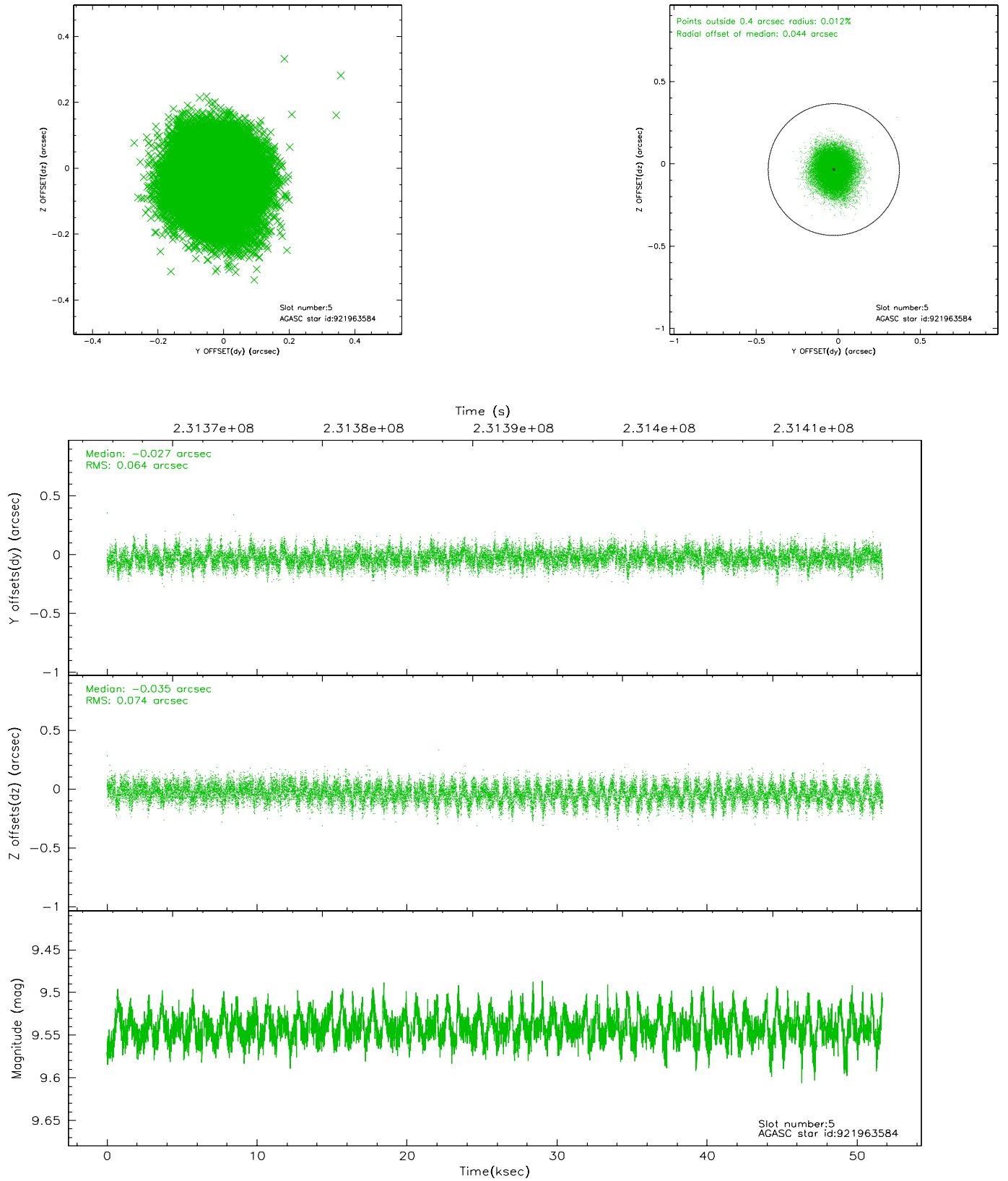
2.4.1 Slot 3



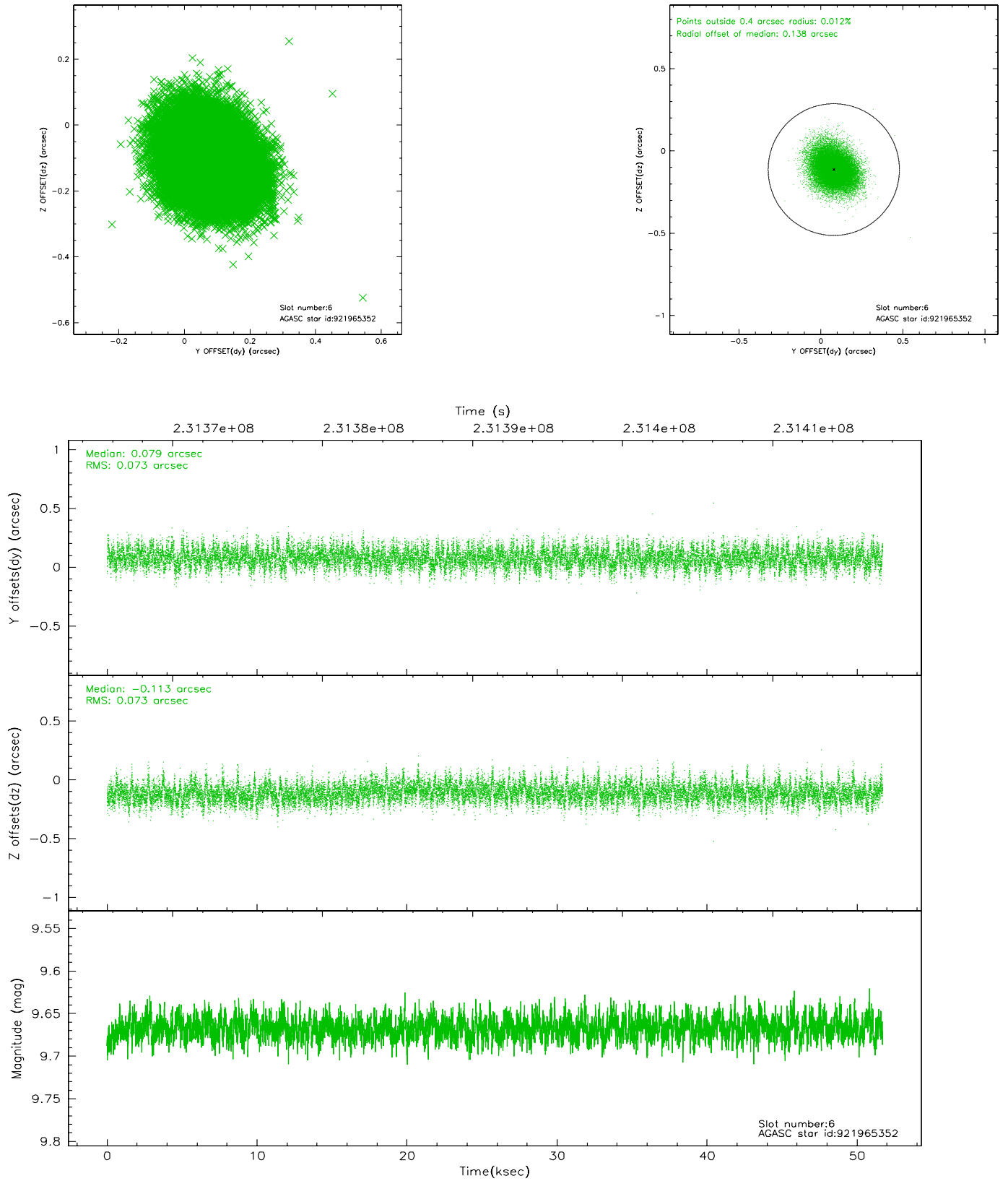
2.4.2 Slot 4



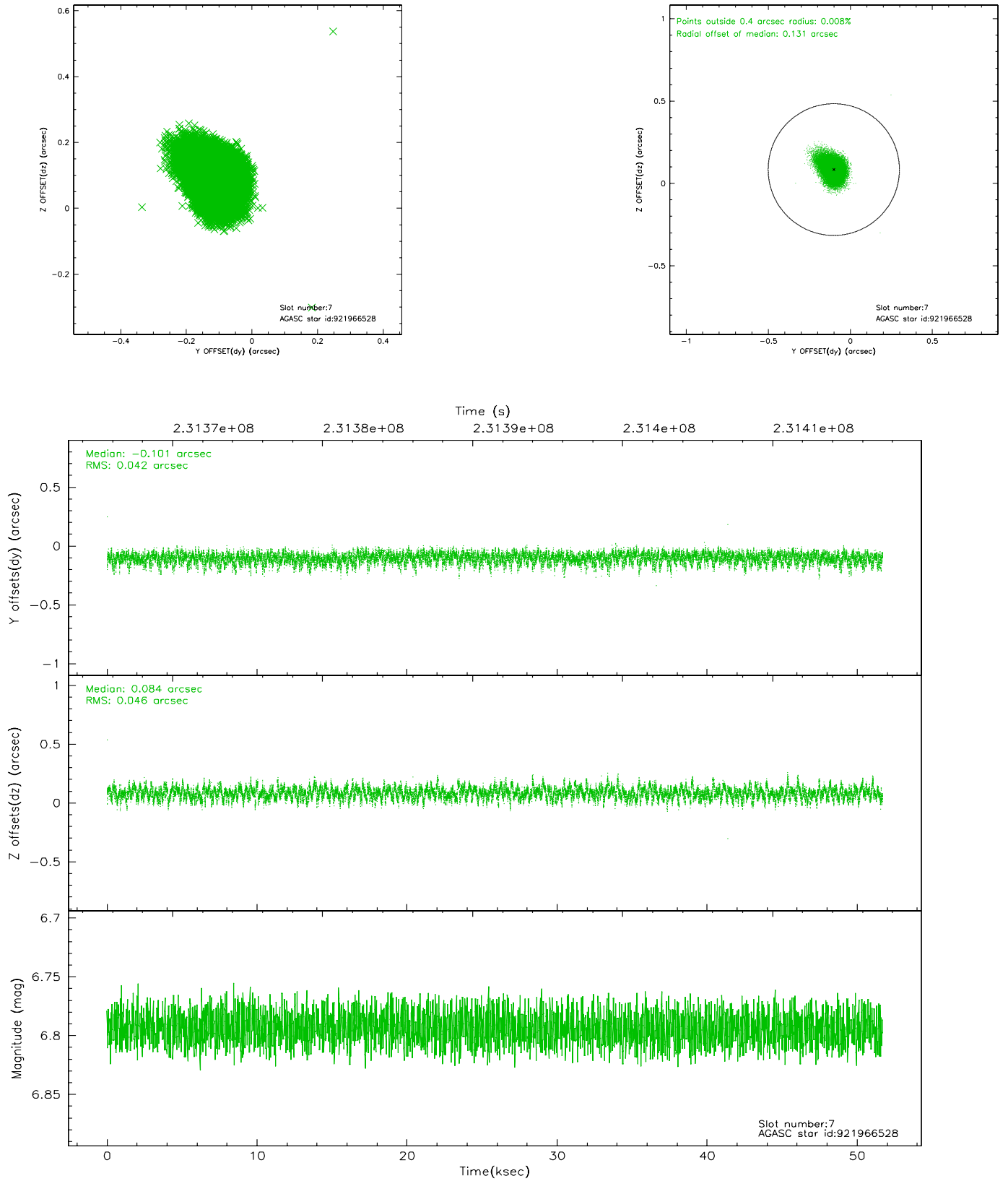
2.4.3 Slot 5



2.4.4 Slot 6

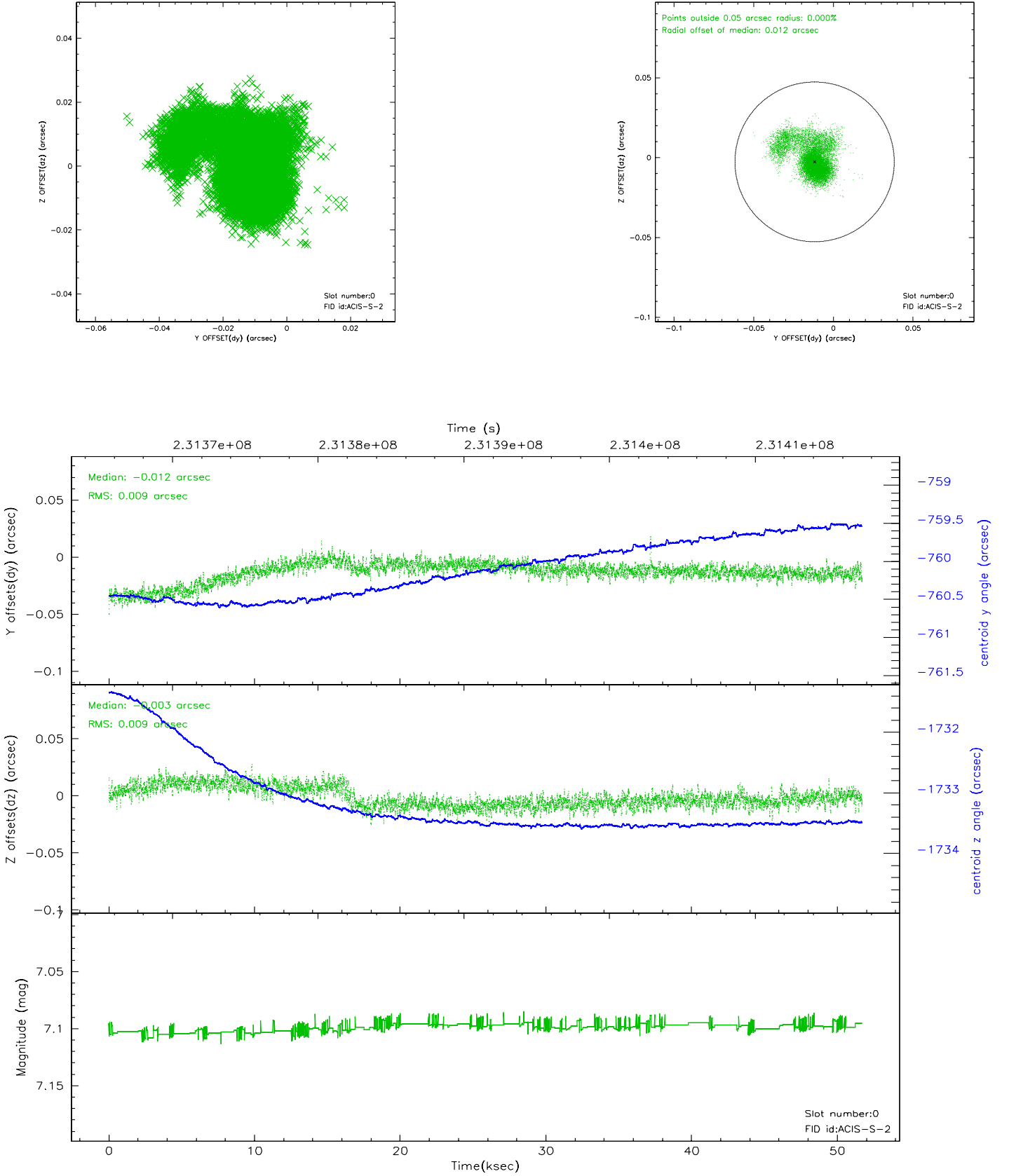


2.4.5 Slot 7

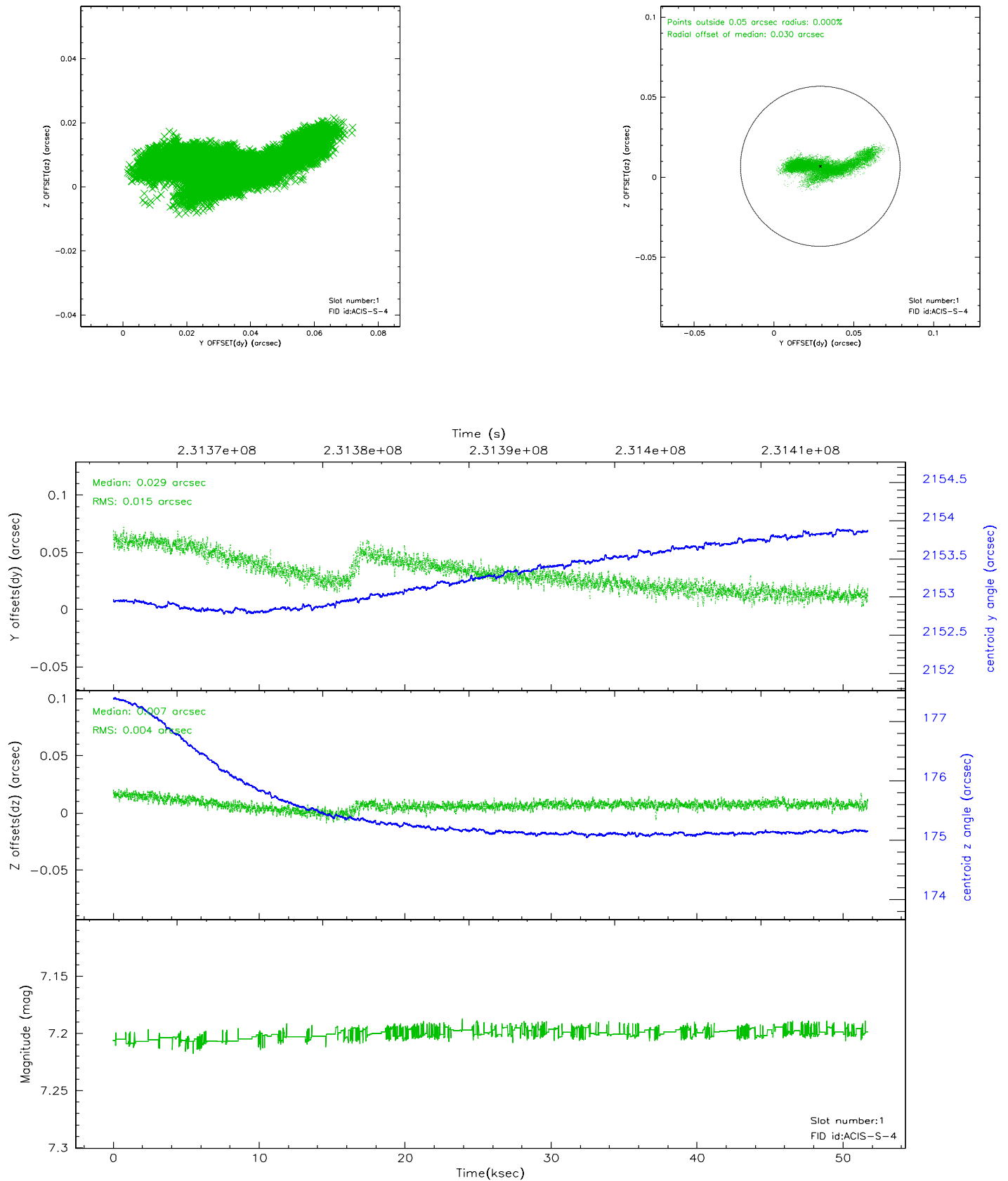


2.5 FID Slots

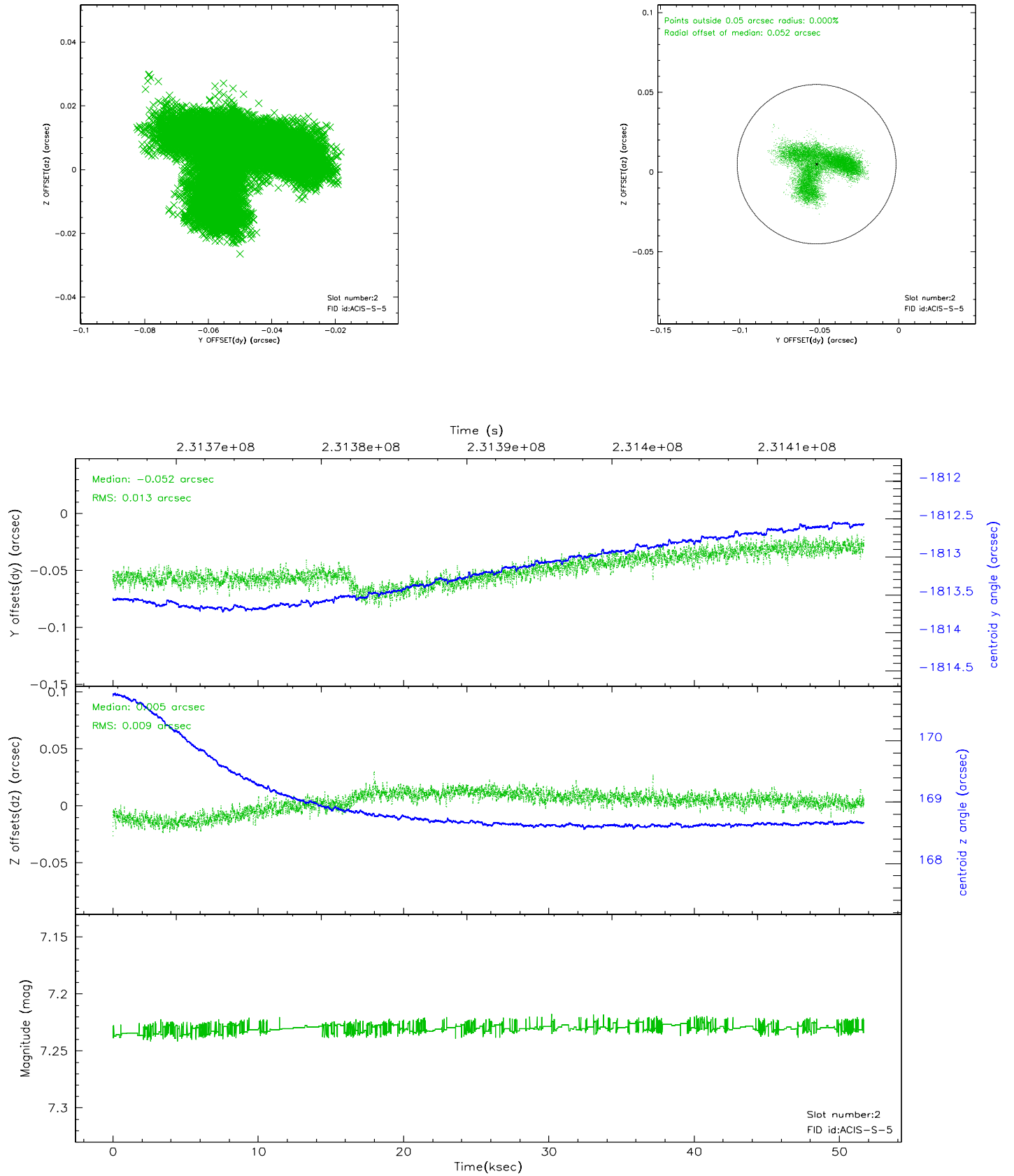
2.5.1 Slot 0



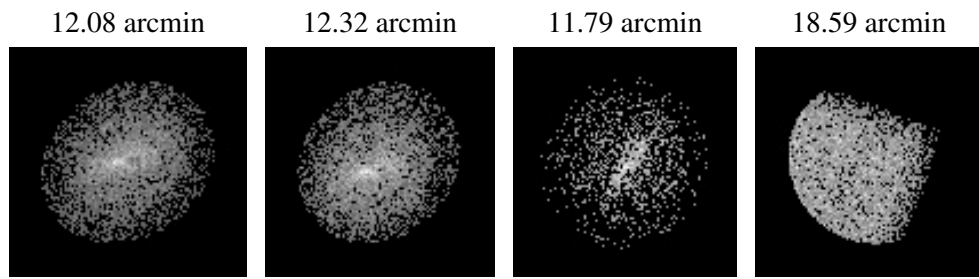
2.5.2 Slot 1



2.5.3 Slot 2



3 Point Sources



A Summary

A.1 Status

V&V Scientist	Beth Sundheim
V&V Date (YYYY-MM-DD)	2006.03.02
V&V Edition	1
V&V Disposition and Status	OK
V&V Charge Time	51.69599

A.2 Comments