

V&V Reference Report

L2 ASCDS Version : 7.6.7.2

Observation 4732 - L2 Version 001
Chandra X-Ray Center

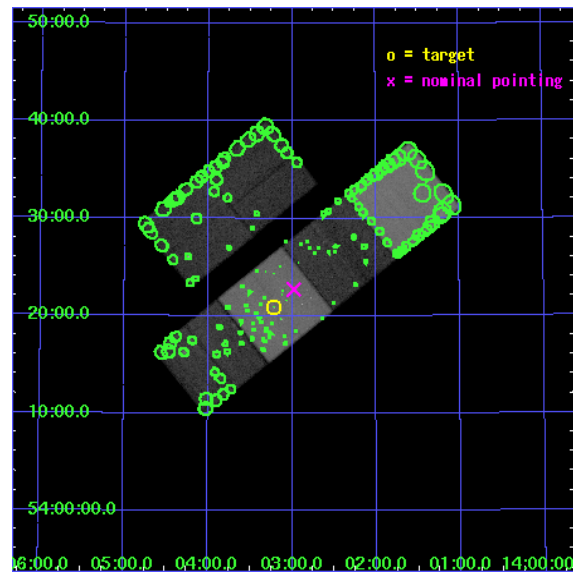
L2 Processing Date : May 29 2006

Contents

1	Front	2
2	OBI	3
2.1	OBI	3
2.1.1	Images	3
2.1.2	Bias	3
2.1.3	Parameters	4
2.1.4	Events	4
2.2	Compared Parameters	5
2.3	Aspect	6
2.4	Star Slots	9
2.4.1	Slot 3	9
2.4.2	Slot 4	10
2.4.3	Slot 5	11
2.4.4	Slot 6	12
2.4.5	Slot 7	13
2.5	FID Slots	14
2.5.1	Slot 0	14
2.5.2	Slot 1	15
2.5.3	Slot 2	16
3	Point Sources	17
A	Summary	18
A.1	Status	18
A.2	Comments	18

1 Front

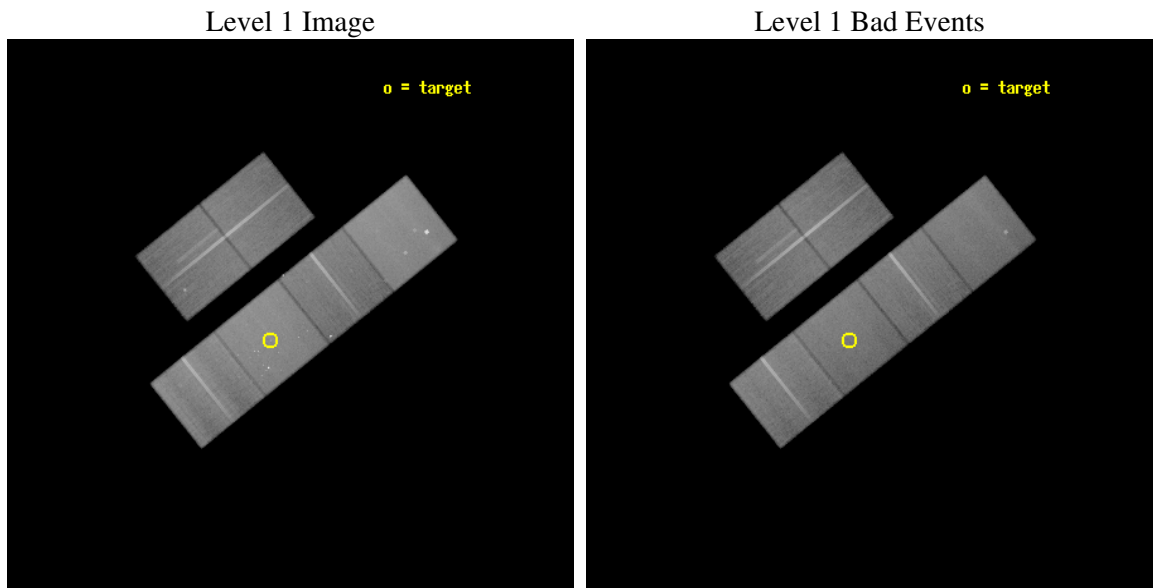
seq_num	600387
obs_id	4732
title	An Ultra-Deep Study of M101
observer	Dr. K. Kuntz
object	M101
dtcycle	0
cycle	P
ra_targ	210.80375
dec_targ	54.348778
ra_nom	210.74460545165
dec_nom	54.378802842951
roll_nom	141.20469989074
revision	2
ontime	70687.958756387
livetime	69792.865259435
ontime2	70687.958766401
ontime3	70684.717766196
ontime5	70687.958756387
ontime6	70687.958756387
ontime7	70687.958756387
ontime8	70687.958756387
l2events	757496



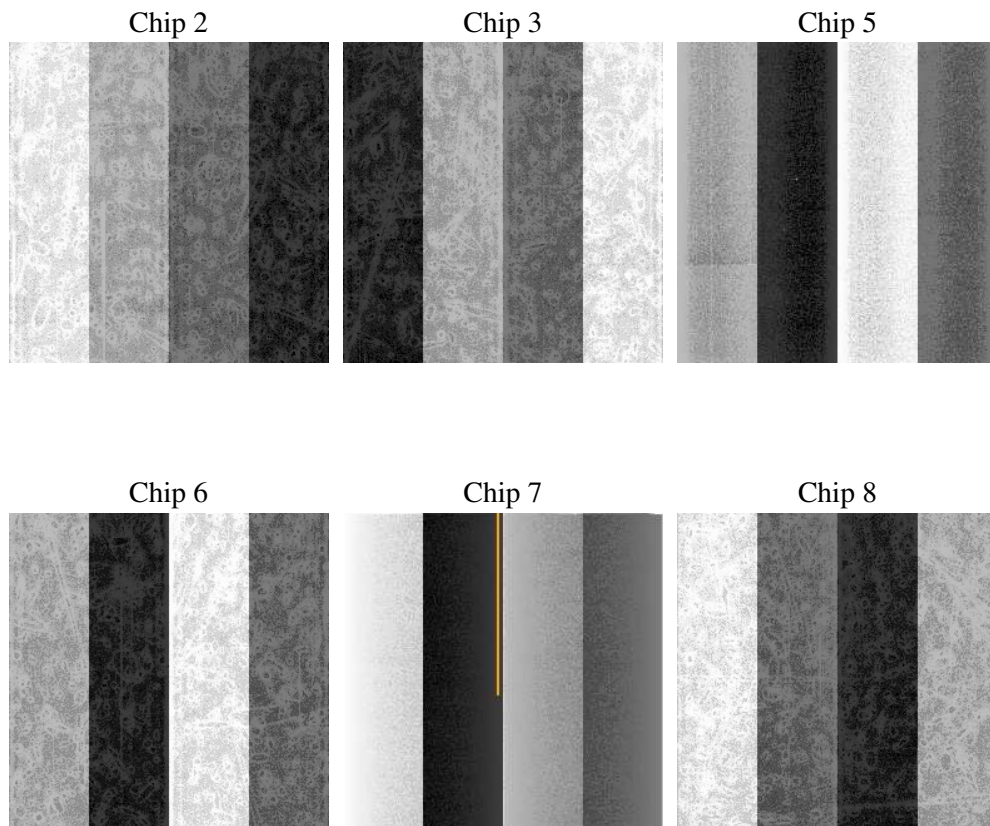
2 OBI

2.1 OBI

2.1.1 Images



2.1.2 Bias



2.1.3 Parameters

obi_num	2
ascdsver	7.6.7.2
caldsver	3.2.2
date	2006-05-29T17:52:48
revision	2

sched_exp_time	70900.000000
ontime	70692.809704483
ontime2	70692.809694618
ontime3	70689.568694413
ontime5	70692.809704483
ontime6	70692.809684604
ontime7	70692.809704483
ontime8	70692.809684604
l1events	3414516

2.1.4 Events

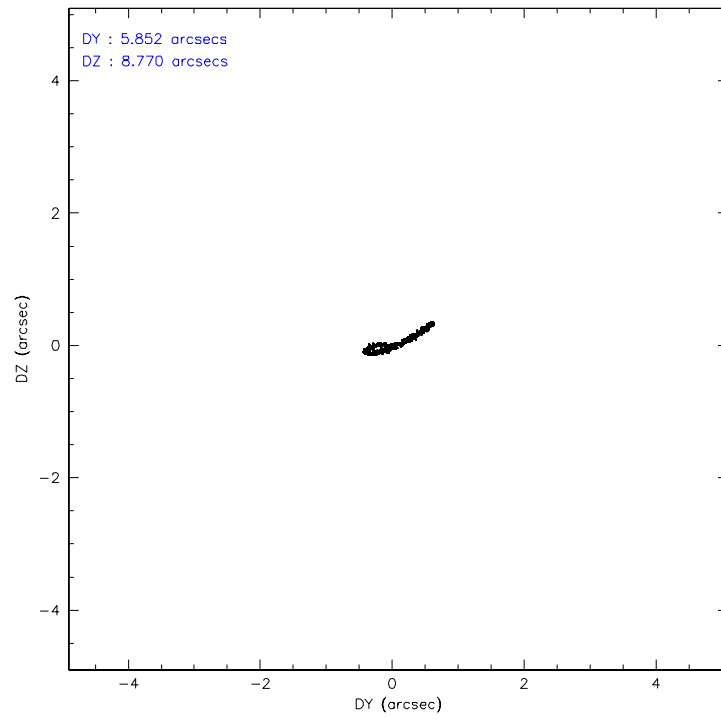
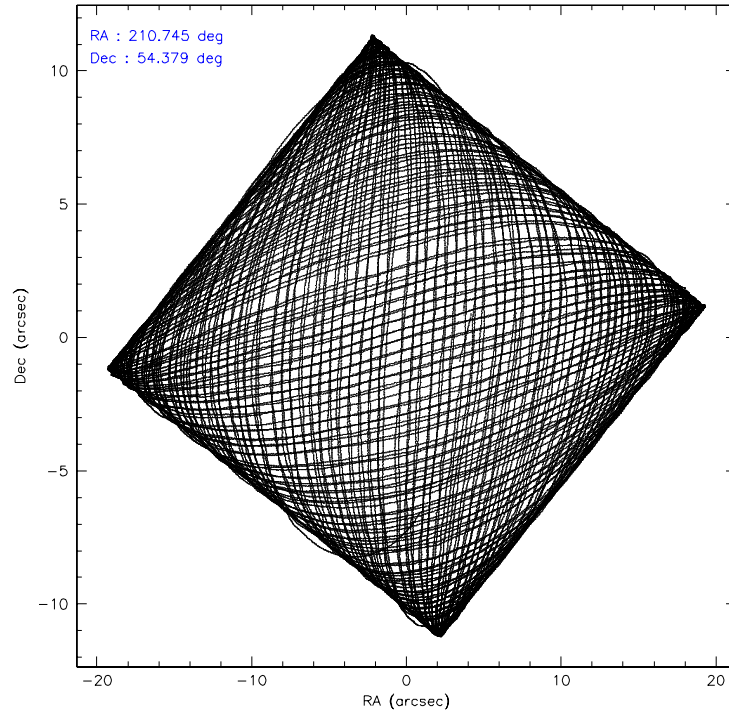
	ccd 2	ccd 3	ccd 5	ccd 6	ccd 7	ccd 8
level 1 events	480488	461907	713401	493567	666611	598542
rejected events	425072	406351	401798	432453	404748	470493
rejected %	88%	87%	56%	87%	60%	78%

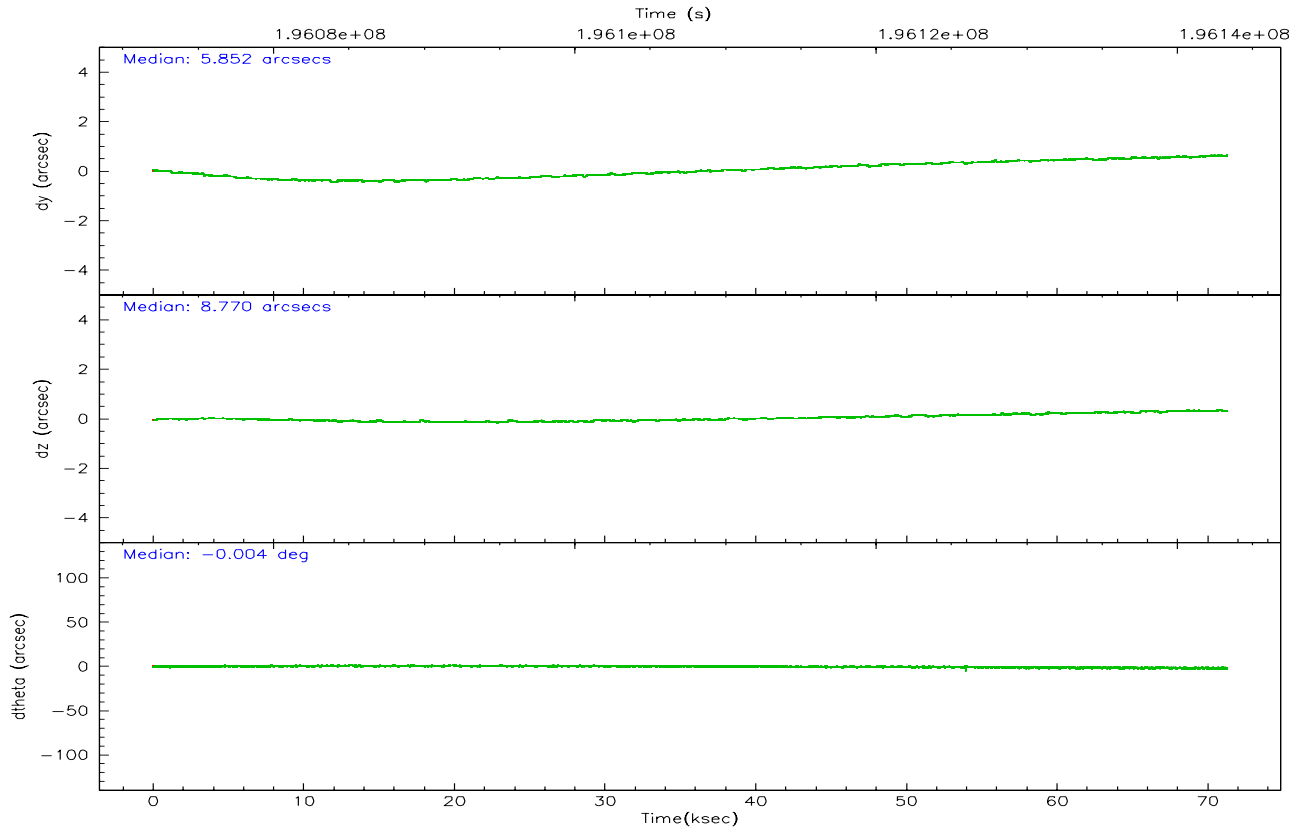
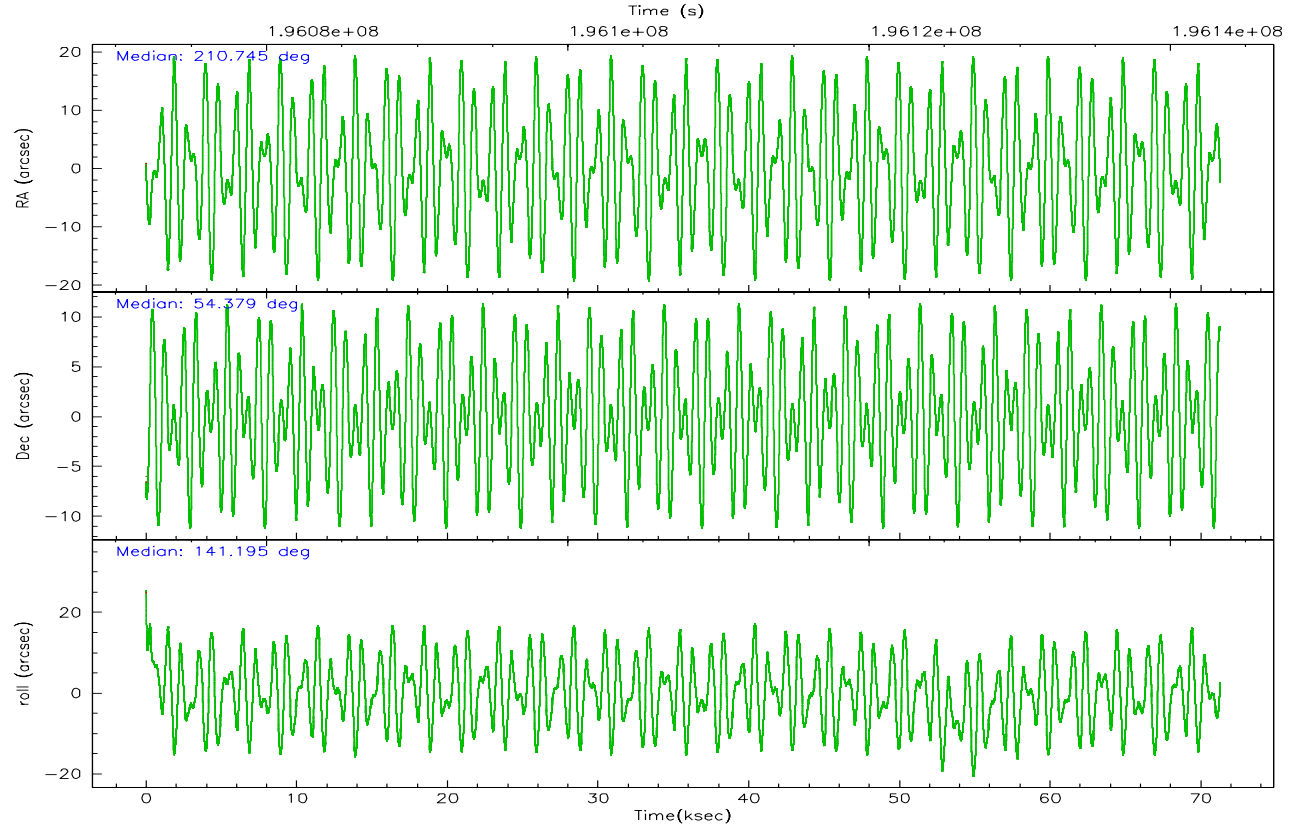
	ccd 2	ccd 3	ccd 5	ccd 6	ccd 7	ccd 8
grade 0 events	23738	24403	21806	25795	20231	41379
	4%	5%	3%	5%	3%	6%
grade 1 events	288	273	2035	267	380	410
	0%	0%	0%	0%	0%	0%
grade 2 events	11453	10564	97564	12172	64669	28220
	2%	2%	13%	2%	9%	4%
grade 3 events	5293	5530	6646	5788	13910	13526
	1%	1%	0%	1%	2%	2%
grade 4 events	5322	5404	6327	5736	13628	12886
	1%	1%	0%	1%	2%	2%
grade 5 events	18834	21032	34391	22583	43090	29188
	3%	4%	4%	4%	6%	4%
grade 6 events	9615	9661	179284	11630	149437	32047
	2%	2%	25%	2%	22%	5%
grade 7 events	405945	385040	365348	409596	361266	440886
	84%	83%	51%	82%	54%	73%

2.2 Compared Parameters

Parameter	Planned	Actual	Parameter	Planned	Actual
Instrument	ACIS	ACIS	Obspar format version number	6	6
Detector	ACIS-235678	ACIS-235678	Obspar file type	PREDICTED	ACTUAL
Grating	NONE	NONE	Obspar update status	NONE	UPDATED
Data mode	VFAINT	VFAINT	On-chip summing requested	N	N
Observation mode	POINTING	POINTING	Subarray requested	NONE	NONE
Pointing RA	210.790876	210.7446054516527	Alternating exposures requested	N	N
Pointing Dec	54.375006	54.3788028429507	Primary exposure time	0.000000	3.2
Pointing Roll	141.010454	141.2046998907366			
SIM focus pos (mm)	-0.684267	-0.6828225247311905			
SIM defocus (mm)	0	0.001444936568705701			
SIM translation stage pos (mm)	-190.132523	-190.1400660498719			
SIM translation stage offset (mm)	0	0.00754346686406393			
Observation start time	196072394.184000	196071326.23134			
Observation start date	2004-03-19T08:32:10	2004-03-19T08:15:26			
Observation end time	196143294.184000	196144133.52204			
Observation end date	2004-03-20T04:13:50	2004-03-20T04:28:53			
Read mode	TIMED	TIMED			

2.3 Aspect



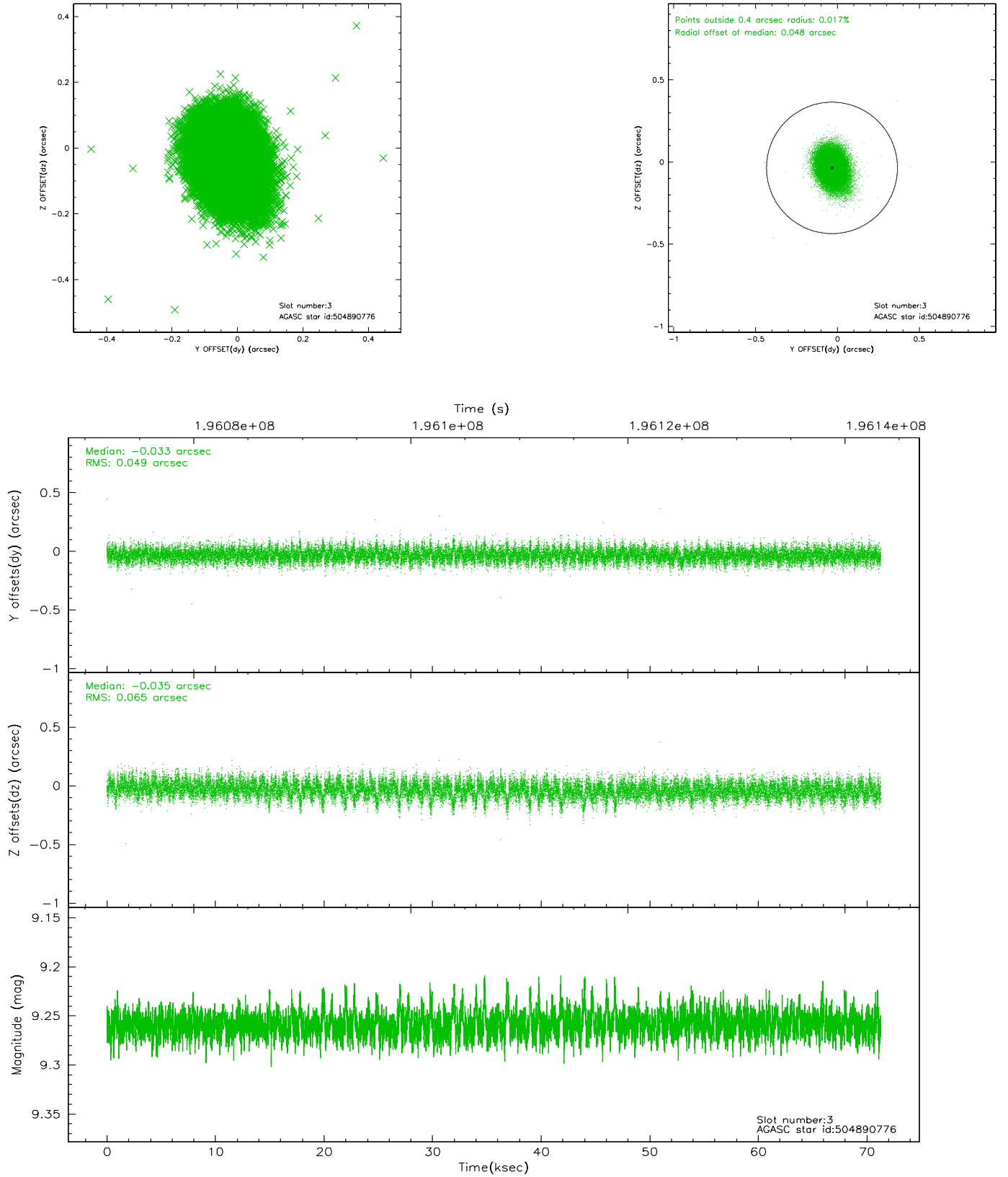


Slot Statistics

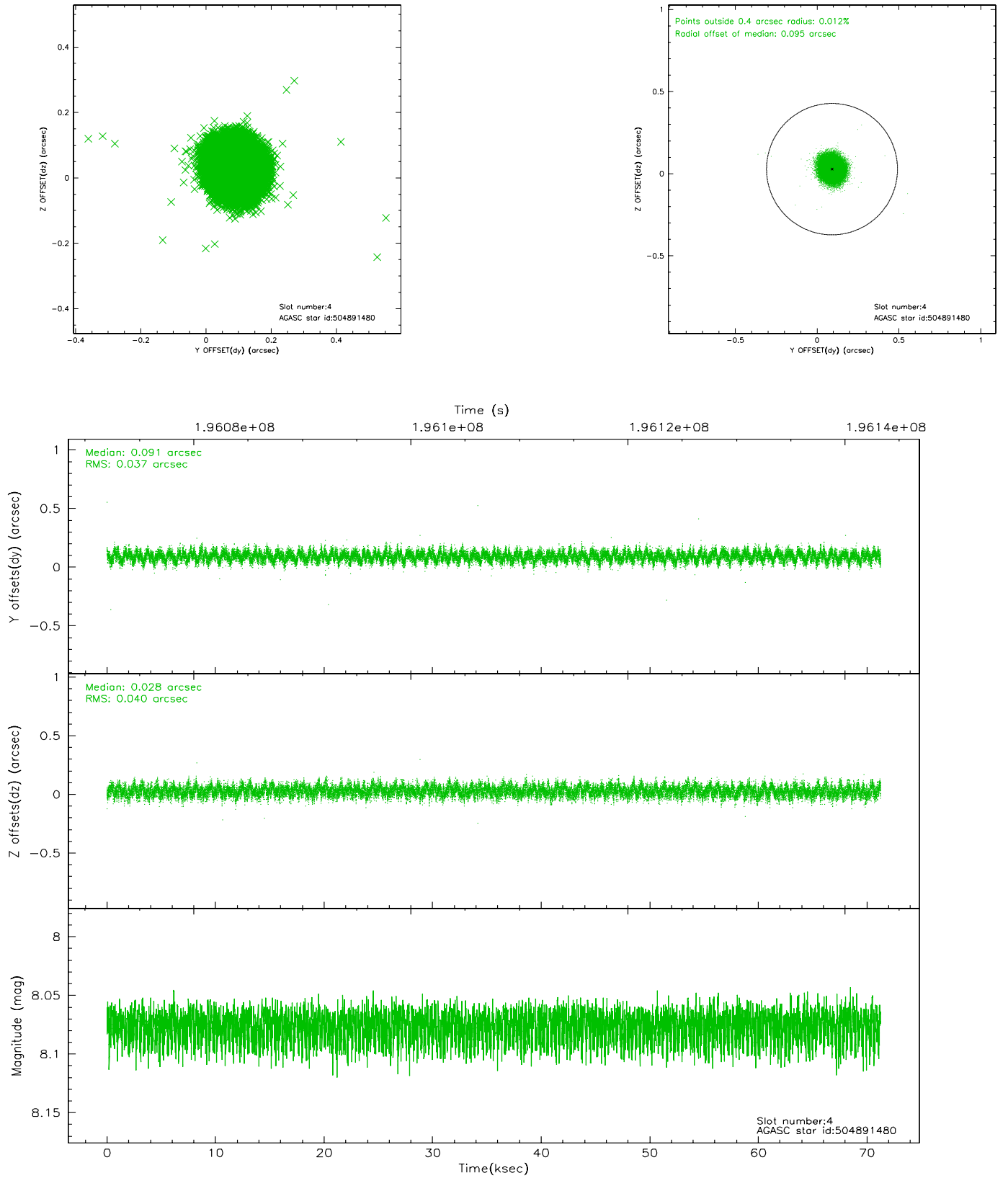
slot	status	id	mag	n_pts	med_dy	med_dz	dr1	dr2	ra	dec	mean_y	mean_z
0	FID	ACIS-S-2	7.10	17388	-0.033	-0.021	0.007	0.011	0.000000	0.000000	-758.66	-1730.04
1	FID	ACIS-S-4	7.21	17388	0.043	0.021	0.005	0.009	0.000000	0.000000	2154.73	178.53
2	FID	ACIS-S-5	7.23	17387	-0.041	0.008	0.007	0.012	0.000000	0.000000	-1811.57	172.15
3	GUIDE	504890776	9.26	34747	-0.033	-0.035	0.085	0.143	211.095934	54.816966	510.62	-1635.71
4	GUIDE	504891480	8.08	34778	0.091	0.028	0.059	0.092	210.708012	54.666096	794.00	-705.81
5	GUIDE	504893088	9.22	34696	0.013	-0.079	0.073	0.118	210.351715	54.364955	695.18	605.63
6	GUIDE	504894856	8.98	34767	-0.019	0.010	0.082	0.130	209.819510	54.132689	1052.45	1956.49
7	GUIDE	505292416	9.30	34756	-0.051	0.080	0.087	0.144	210.920759	55.040479	1300.28	-2030.45

2.4 Star Slots

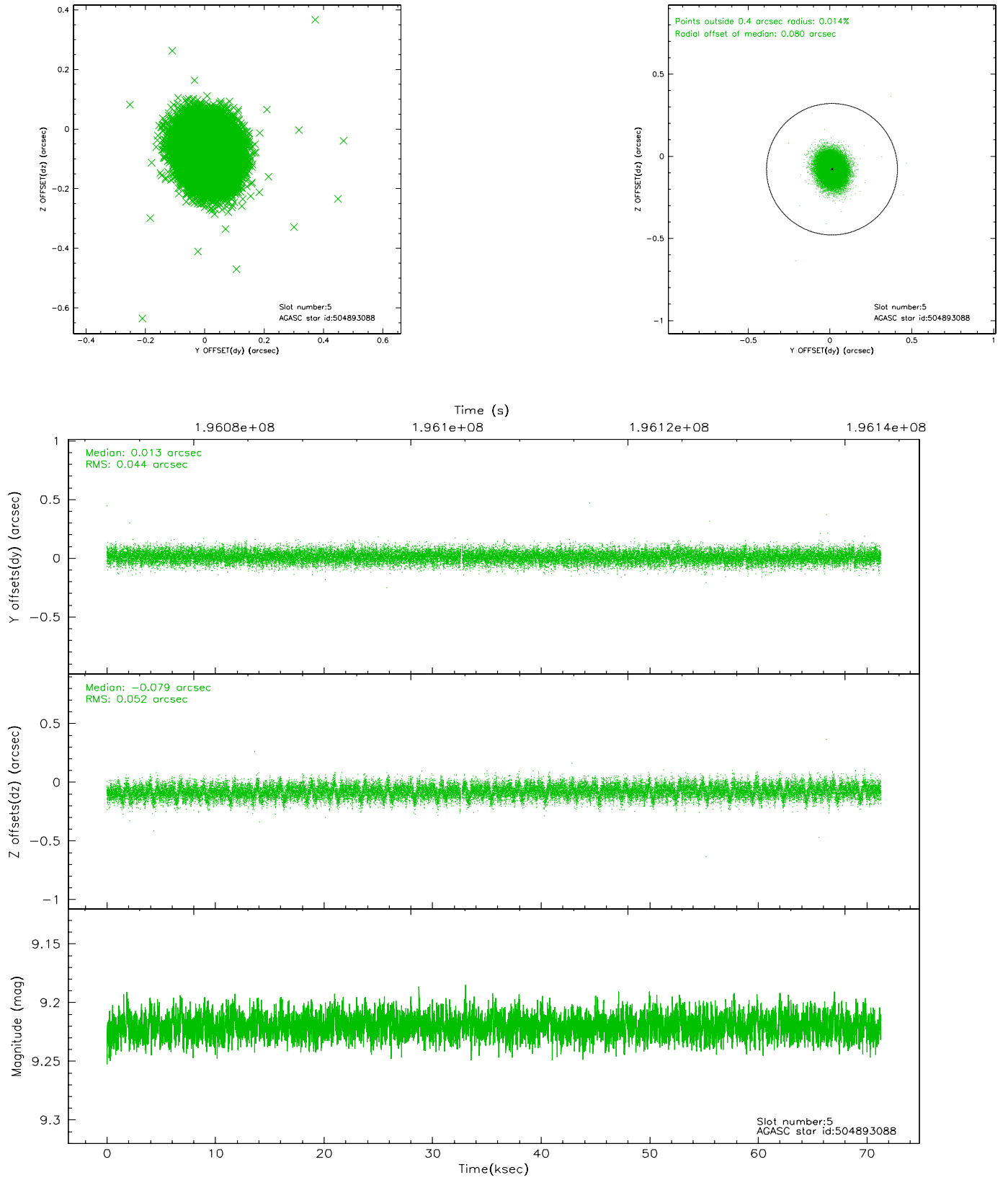
2.4.1 Slot 3



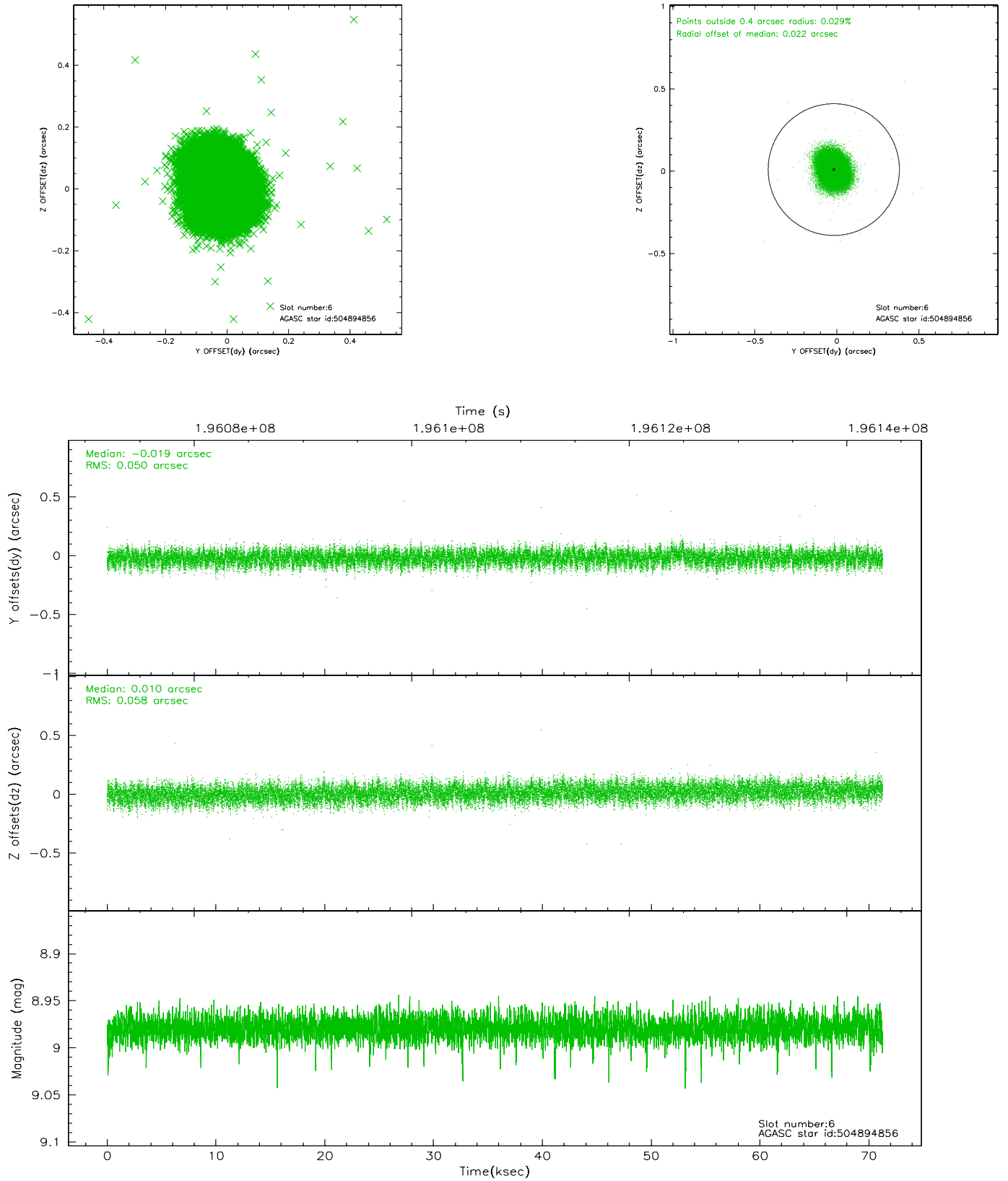
2.4.2 Slot 4



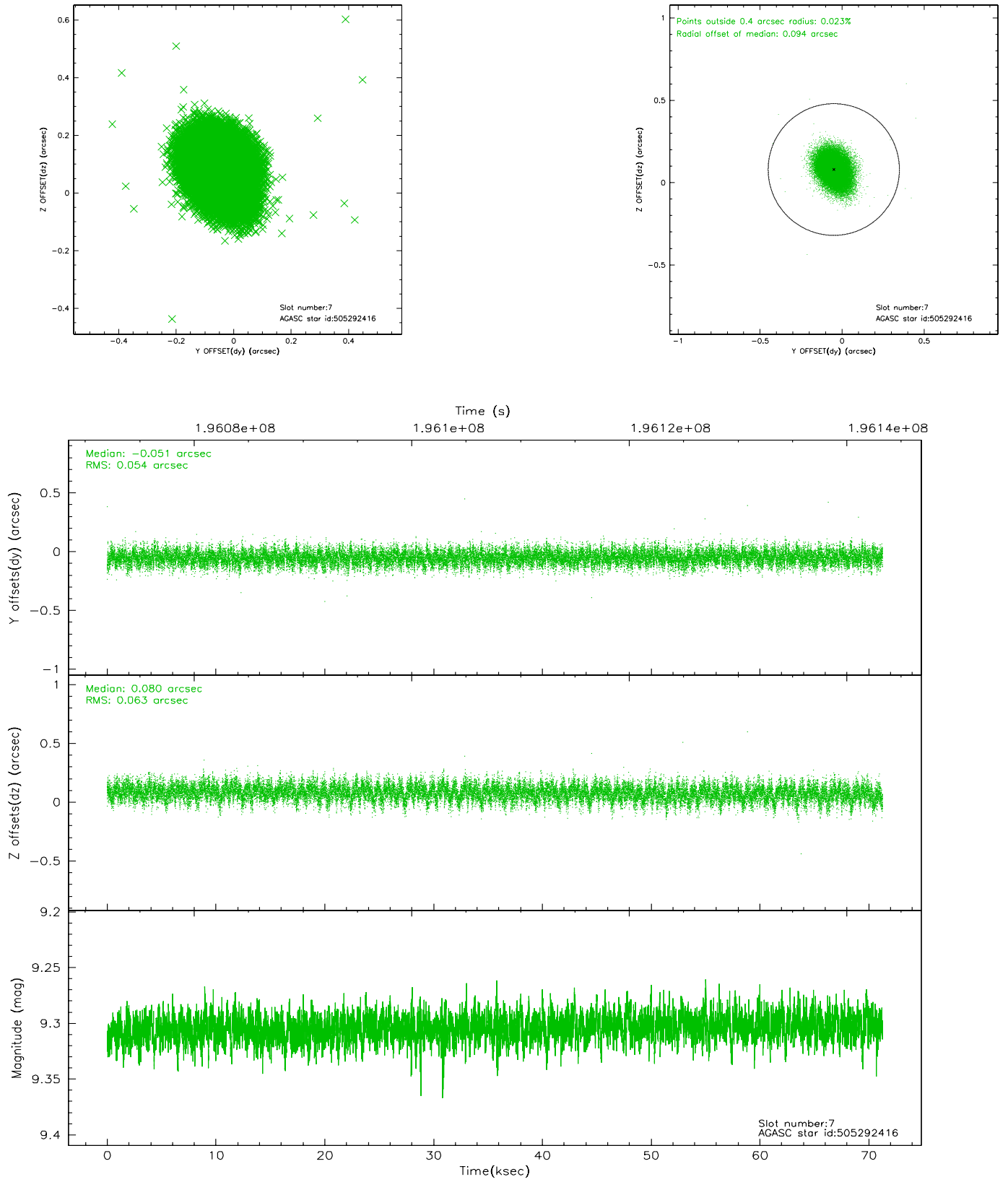
2.4.3 Slot 5



2.4.4 Slot 6

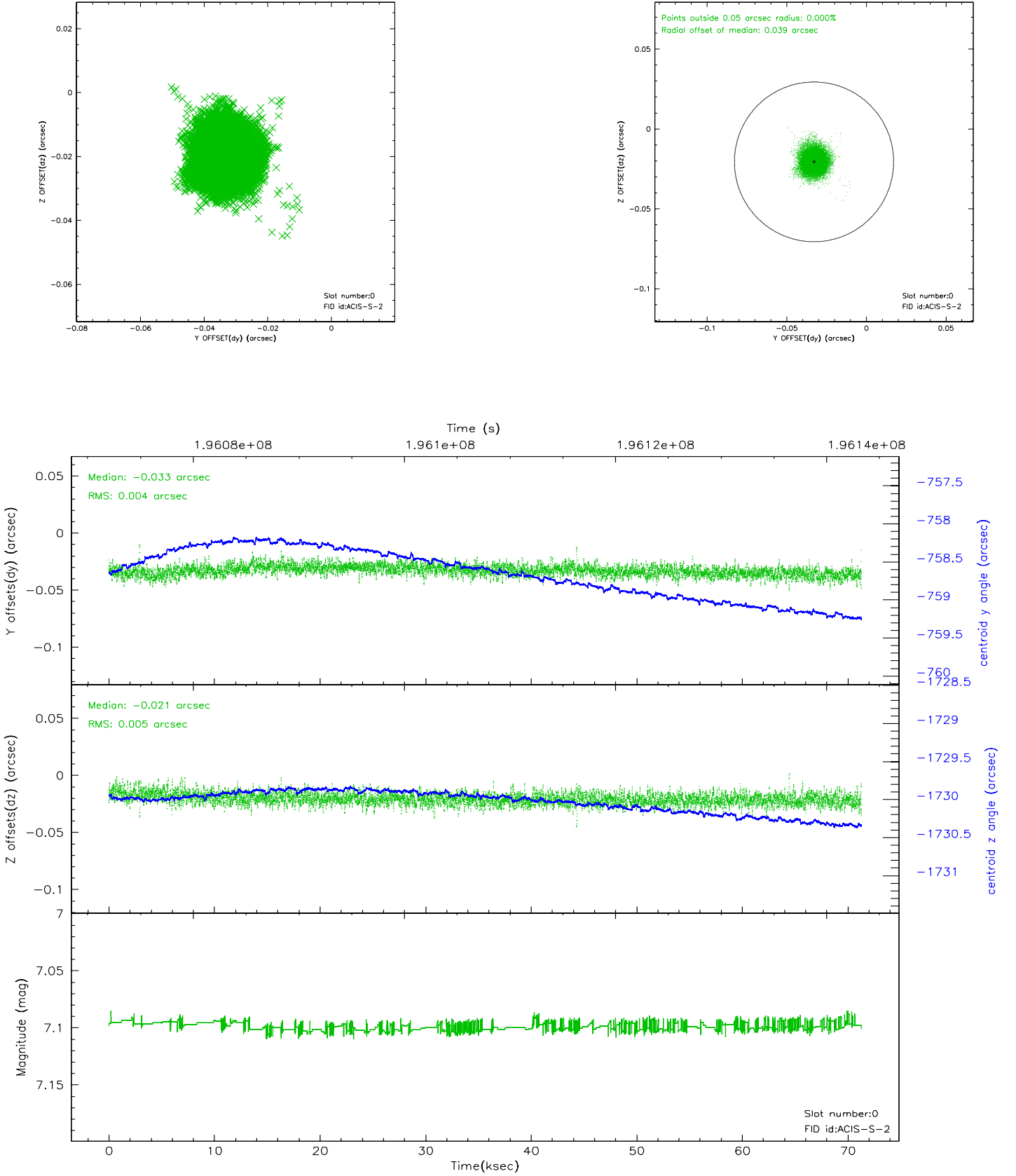


2.4.5 Slot 7

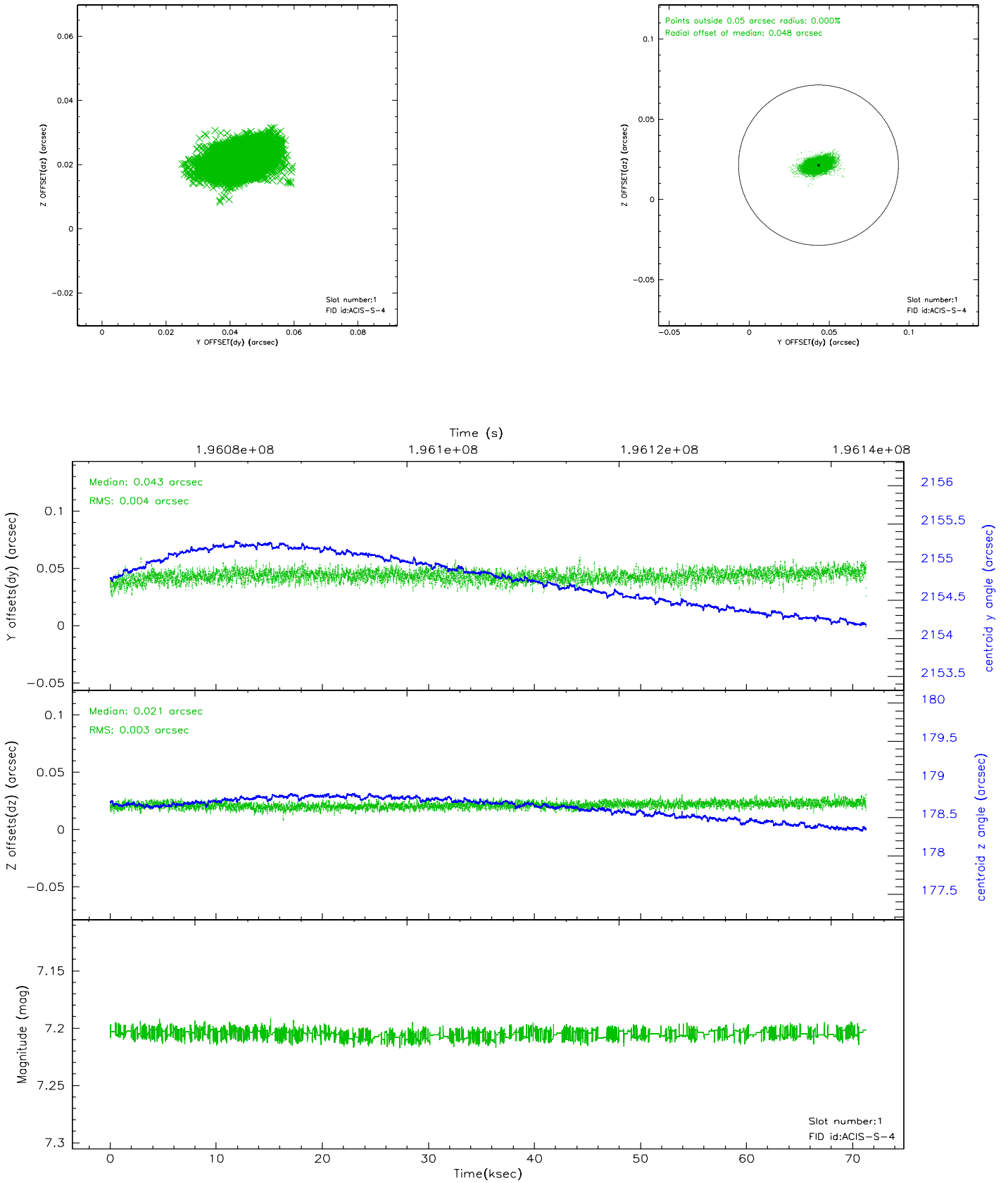


2.5 FID Slots

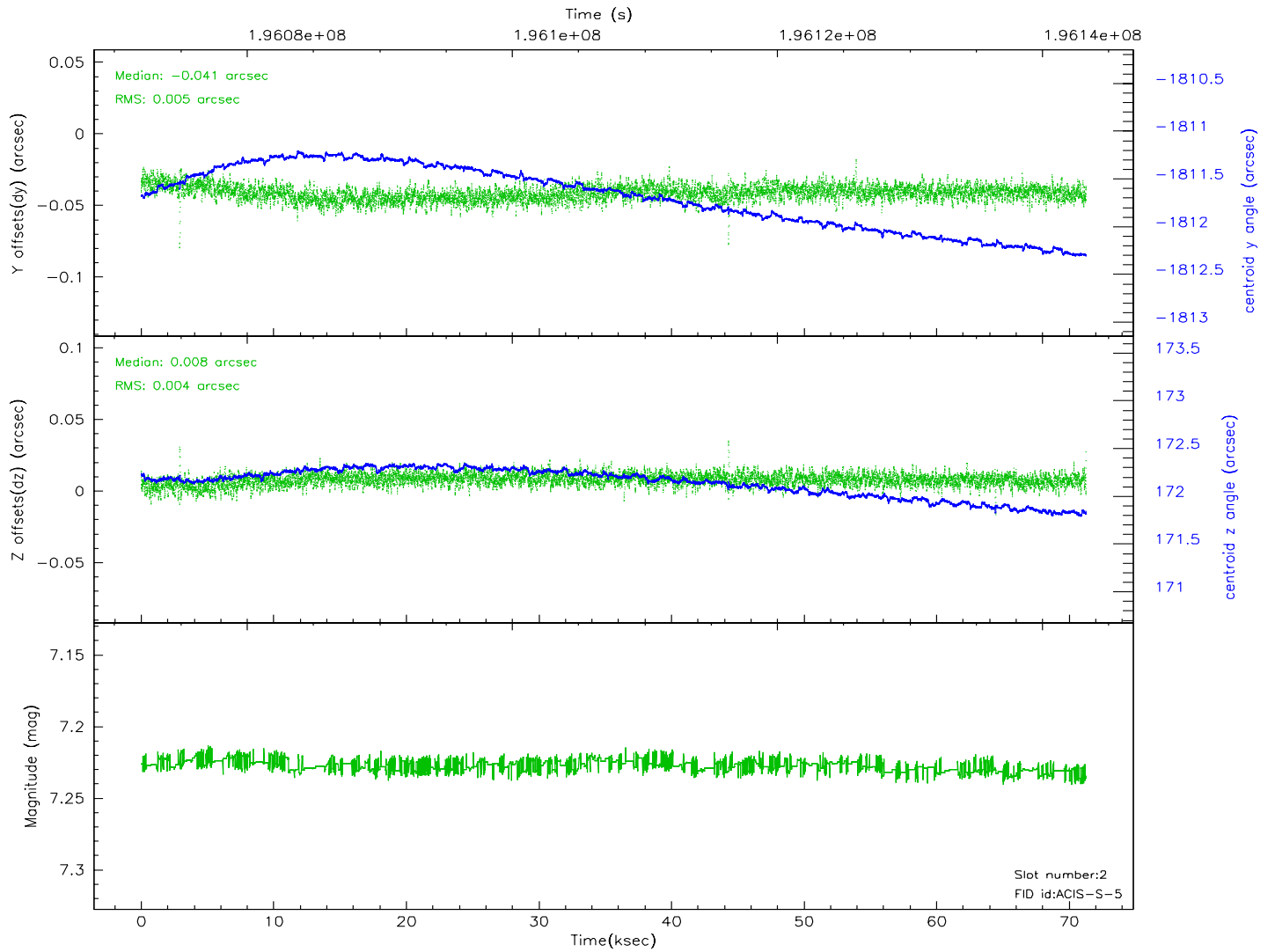
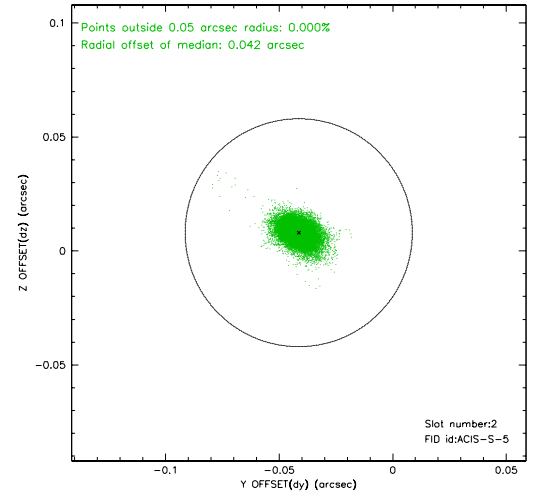
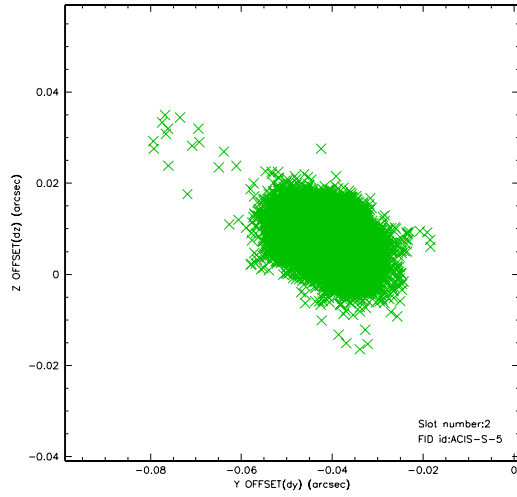
2.5.1 Slot 0



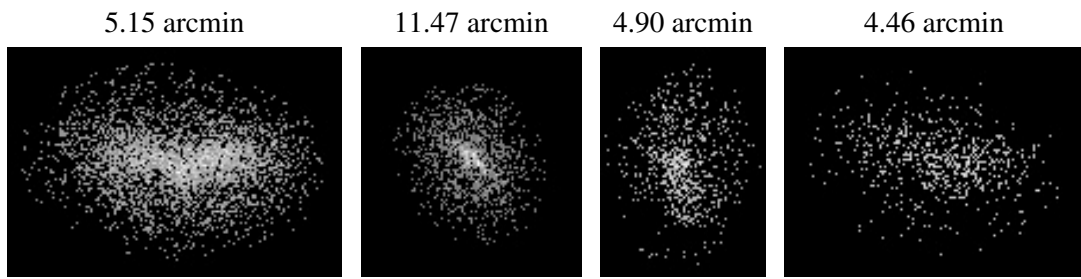
2.5.2 Slot 1



2.5.3 Slot 2



3 Point Sources



A Summary

A.1 Status

V&V Scientist	Jen Lauer
V&V Date (YYYY-MM-DD)	2006.05.30
V&V Edition	1
V&V Disposition and Status	OK
V&V Charge Time	70.691

A.2 Comments

Monitor constraint met.