

# V&V Reference Report

## L2 ASCDS Version : 7.6.7.1

Observation 4712 - L2 Version 001  
Chandra X-Ray Center

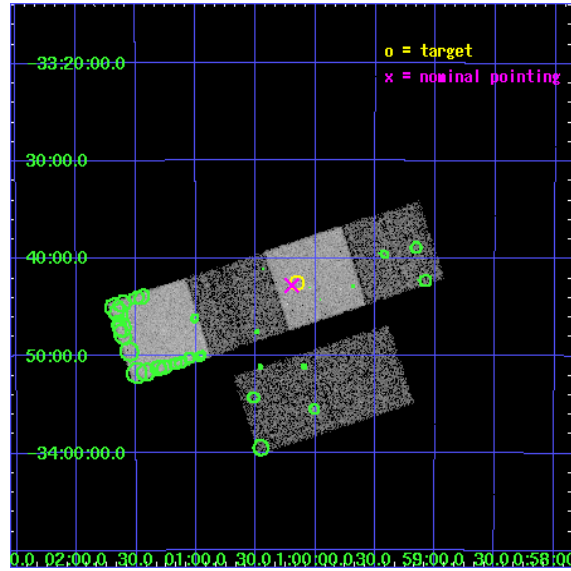
L2 Processing Date : Apr 13 2006

## Contents

<b>1</b>	<b>Front</b>	<b>2</b>
<b>2</b>	<b>OBI</b>	<b>3</b>
2.1	OBI . . . . .	3
2.1.1	Images . . . . .	3
2.1.2	Bias . . . . .	3
2.1.3	Parameters . . . . .	4
2.1.4	Events . . . . .	4
2.2	Compared Parameters . . . . .	5
2.3	Aspect . . . . .	6
2.4	Star Slots . . . . .	9
2.4.1	Slot 3 . . . . .	9
2.4.2	Slot 4 . . . . .	10
2.4.3	Slot 5 . . . . .	11
2.4.4	Slot 6 . . . . .	12
2.4.5	Slot 7 . . . . .	13
2.5	FID Slots . . . . .	14
2.5.1	Slot 0 . . . . .	14
2.5.2	Slot 1 . . . . .	15
2.5.3	Slot 2 . . . . .	16
<b>3</b>	<b>Point Sources</b>	<b>17</b>
<b>A</b>	<b>Summary</b>	<b>18</b>
A.1	Status . . . . .	18
A.2	Comments . . . . .	18

# 1 Front

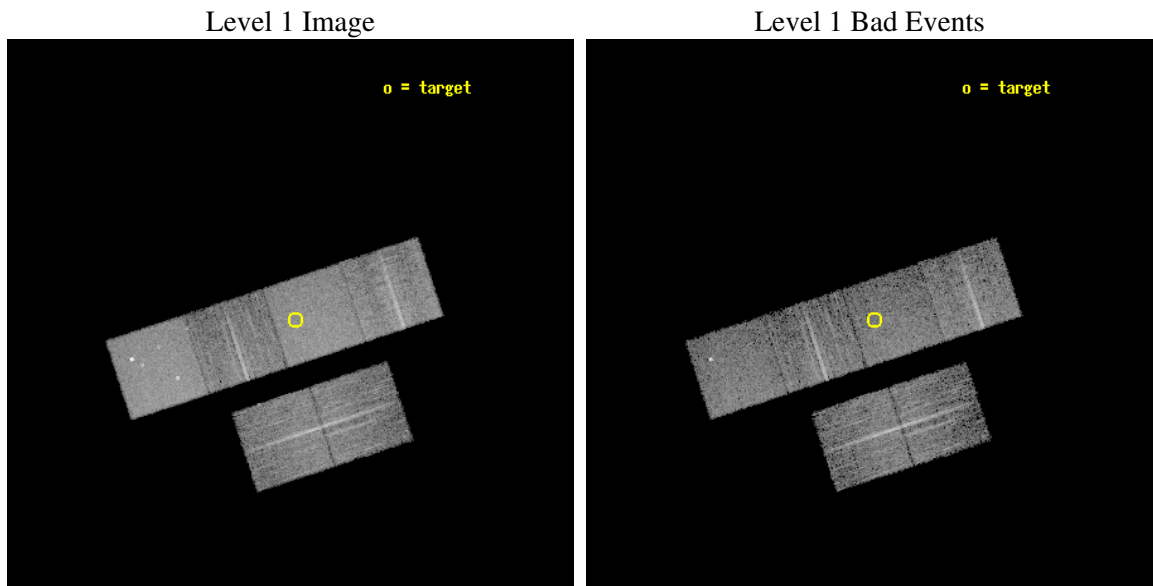
seq_num	600367
obs_id	4712
title	Using the Sculptor Dwarf Spheroidal Galaxy to Constrain X-ray Binary Production in Population II
observer	Dr. Thomas Maccarone
object	SCULPTOR DWARF SPHEROIDAL
dtcycle	0
cycle	P
ra_targ	15.039167
dec_targ	-33.708889
ra_nom	15.049304176163
dec_nom	-33.713439084304
roll_nom	341.75401366182
revision	2
ontime	6159.9999770522
livetime	6081.9983482361
ontime2	6159.9999770522
ontime3	6159.9999770522
ontime5	6159.9999770522
ontime6	6159.9999770522
ontime7	6159.9999770522
ontime8	6159.9999770522
l2events	83349



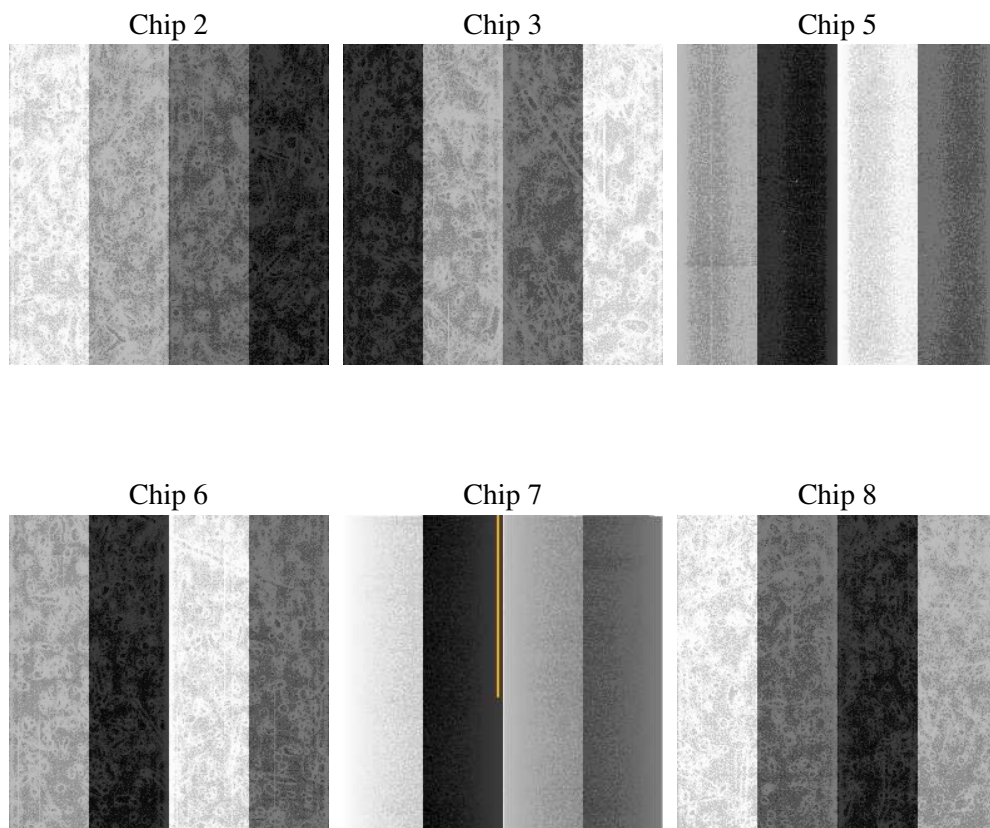
## 2 OBI

### 2.1 OBI

#### 2.1.1 Images



#### 2.1.2 Bias



### 2.1.3 Parameters

obi_num	0
ascdsver	7.6.7.1
caldsver	3.2.1
date	2006-04-13T08:20:30
revision	2

sched_exp_time	6005.725000
ontime	6316.7144632041
ontime2	6316.7144632041
ontime3	6316.7144632041
ontime5	6316.7144632041
ontime6	6316.7144432664
ontime7	6316.7144632041
ontime8	6316.7144632041
l1events	368746

### 2.1.4 Events

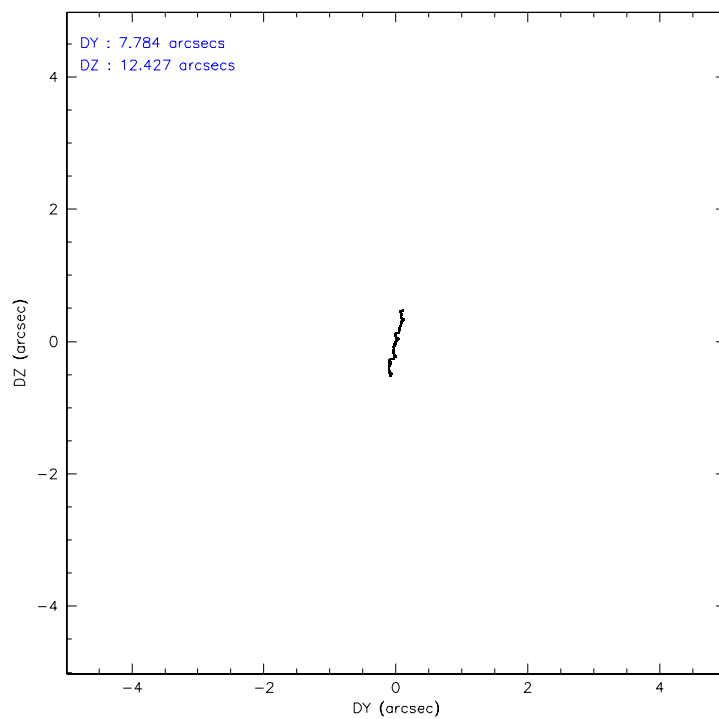
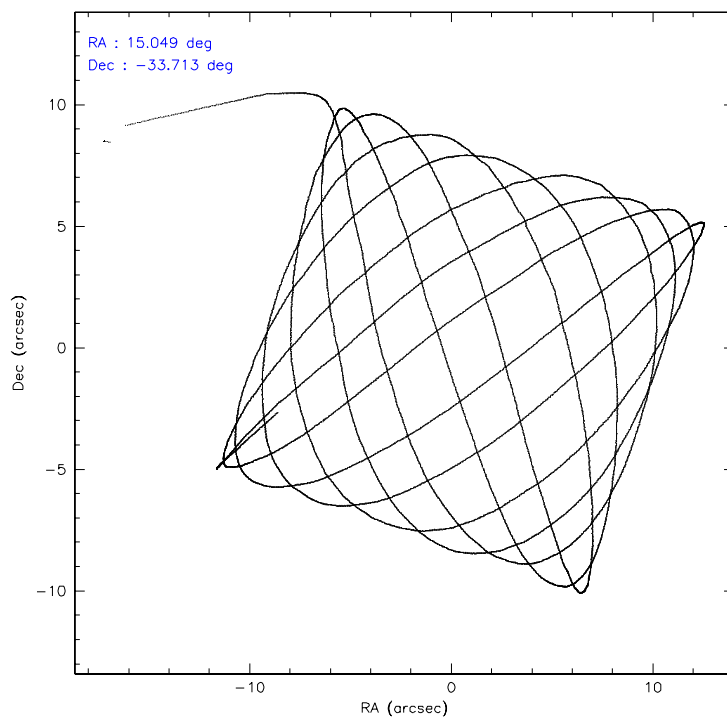
	ccd 2	ccd 3	ccd 5	ccd 6	ccd 7	ccd 8
level 1 events	53632	48691	80093	51183	70662	64485
rejected events	47099	42647	44284	44670	42834	50437
rejected %	87%	87%	55%	87%	60%	78%

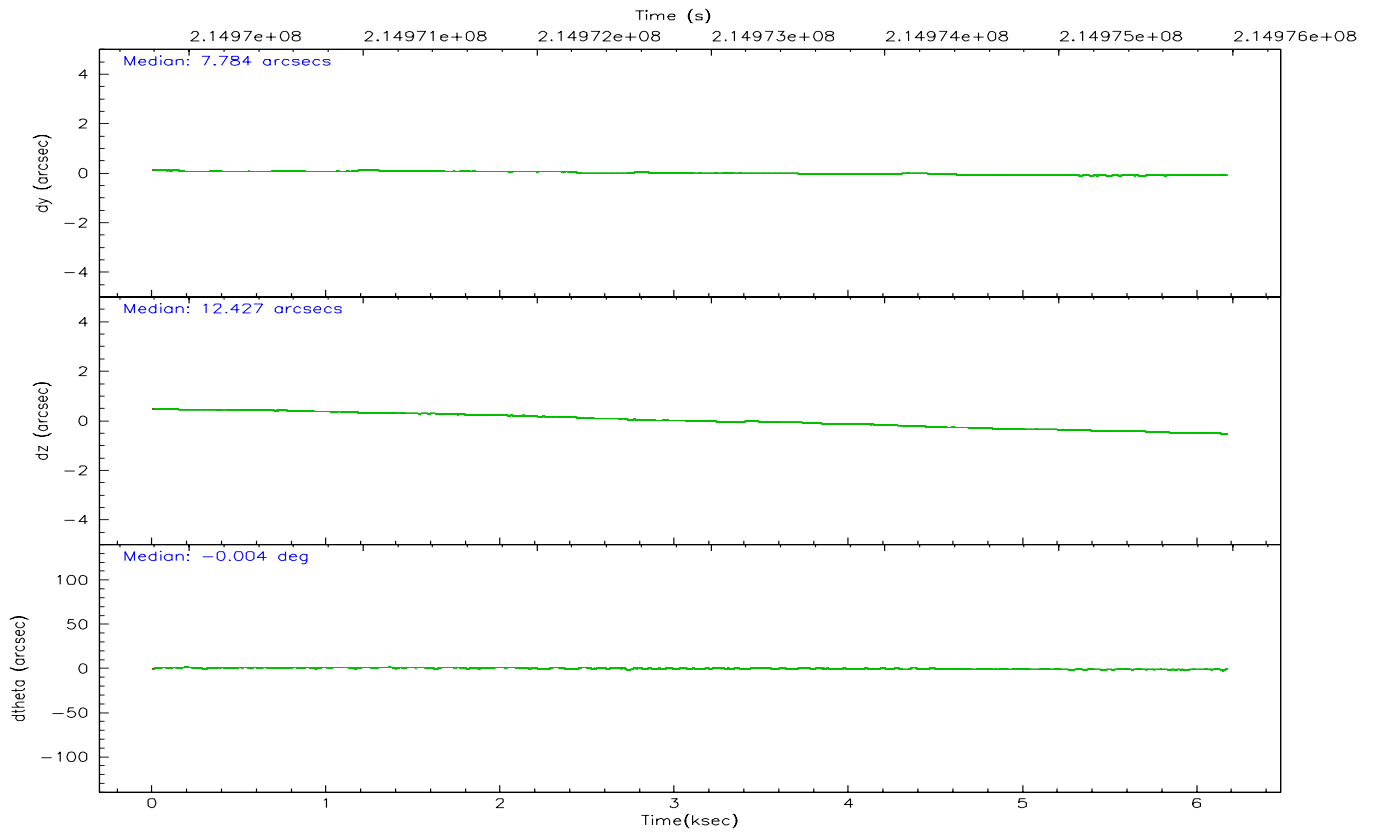
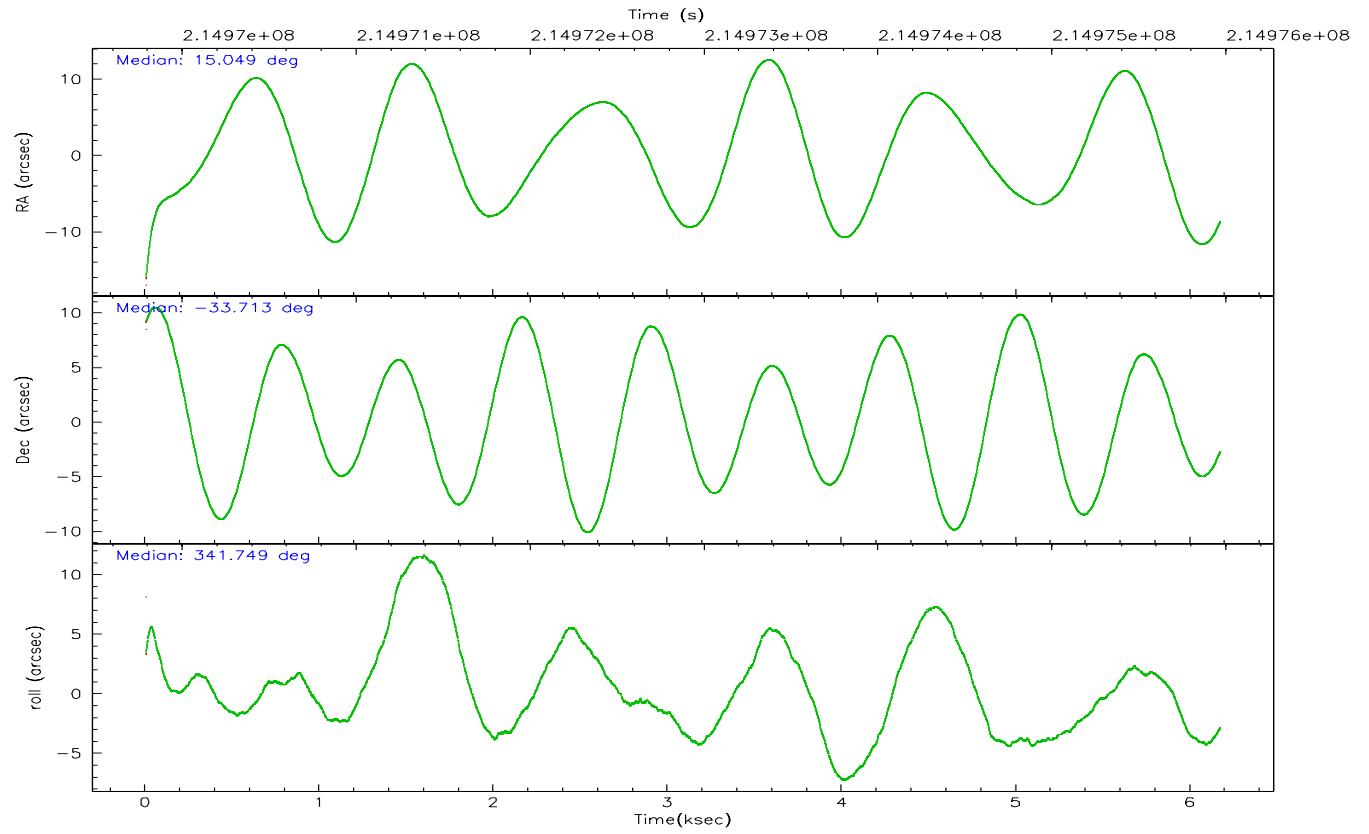
	ccd 2	ccd 3	ccd 5	ccd 6	ccd 7	ccd 8
grade 0 events	3224	2849	3334	2935	1741	4847
	6%	5%	4%	5%	2%	7%
grade 1 events	26	46	391	33	52	37
	0%	0%	0%	0%	0%	0%
grade 2 events	1341	1155	11452	1317	6924	3141
	2%	2%	14%	2%	9%	4%
grade 3 events	584	547	842	577	1413	1414
	1%	1%	1%	1%	1%	2%
grade 4 events	567	580	783	583	1513	1366
	1%	1%	0%	1%	2%	2%
grade 5 events	2021	2141	3921	2375	4473	3009
	3%	4%	4%	4%	6%	4%
grade 6 events	990	1032	20258	1248	16965	3544
	1%	2%	25%	2%	24%	5%
grade 7 events	44879	40341	39112	42115	37581	47127
	83%	82%	48%	82%	53%	73%

## 2.2 Compared Parameters

Parameter	Planned	Actual	Parameter	Planned	Actual
Instrument	ACIS	ACIS	Obspar format version number	6	6
Detector	ACIS-235678	ACIS-235678	Obspar file type	PREDICTED	ACTUAL
Grating	NONE	NONE	Obspar update status	NONE	UPDATED
Data mode	VFAINT	VFAINT	On-chip summing requested	N	N
Observation mode	POINTING	POINTING	Subarray requested	NONE	NONE
Pointing RA	15.017440	15.04930417616324	Alternating exposures requested	N	N
Pointing Dec	-33.719385	-33.71343908430421	Primary exposure time	0.000000	3.2
Pointing Roll	341.579681	341.7540136618159			
SIM focus pos (mm)	-0.684267	-0.6828225247311905			
SIM defocus (mm)	0	0.001444936568705701			
SIM translation stage pos (mm)	-190.132523	-190.1400660498719			
SIM translation stage offset (mm)	0	0.00754346686406393			
Observation start time	214969961.184000	214968825.15689			
Observation start date	2004-10-24T01:51:37	2004-10-24T01:33:45			
Observation end time	214975967.184000	214976183.63222			
Observation end date	2004-10-24T03:31:43	2004-10-24T03:36:23			
Read mode	TIMED	TIMED			

## 2.3 Aspect





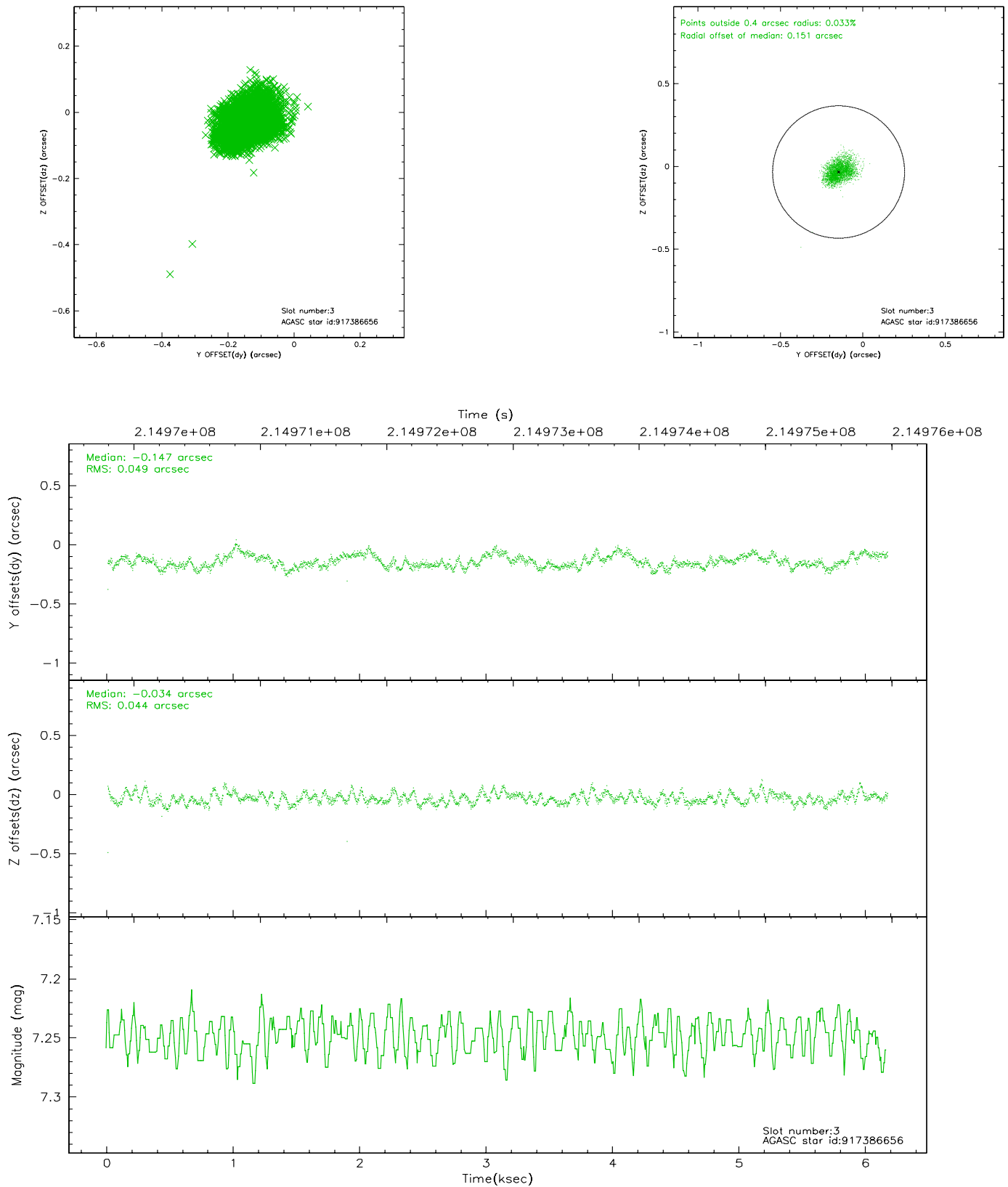
### Slot Statistics

slot	status	id	mag	n_pts	med_dy	med_dz	dr1	dr2	ra	dec	mean_y	mean_z
0	FID	ACIS-S-2	7.10	1505	0.002	-0.011	0.010	0.016	0.000000	0.000000	-760.56	-1733.76
1	FID	ACIS-S-4	7.20	1505	0.033	0.002	0.005	0.009	0.000000	0.000000	2152.31	173.74
2	FID	ACIS-S-5	7.23	1505	-0.066	0.018	0.010	0.016	0.000000	0.000000	-1812.24	168.53
3	GUIDE	917386656	7.25	3010	-0.147	-0.034	0.069	0.110	15.342124	-33.359890	517.90	1534.98
4	GUIDE	917389080	10.14	3008	0.311	-0.019	0.137	0.213	15.722484	-33.662555	1942.69	855.45
5	GUIDE	917389288	9.54	3008	-0.087	-0.005	0.165	0.253	15.394706	-33.185862	472.91	2179.68
6	GUIDE	917390768	9.88	3009	-0.033	0.064	0.121	0.196	14.870561	-33.104152	-1119.73	1961.80
7	GUIDE	917650528	8.71	3005	-0.056	-0.008	0.073	0.115	14.274554	-33.869842	-1933.11	-1222.72

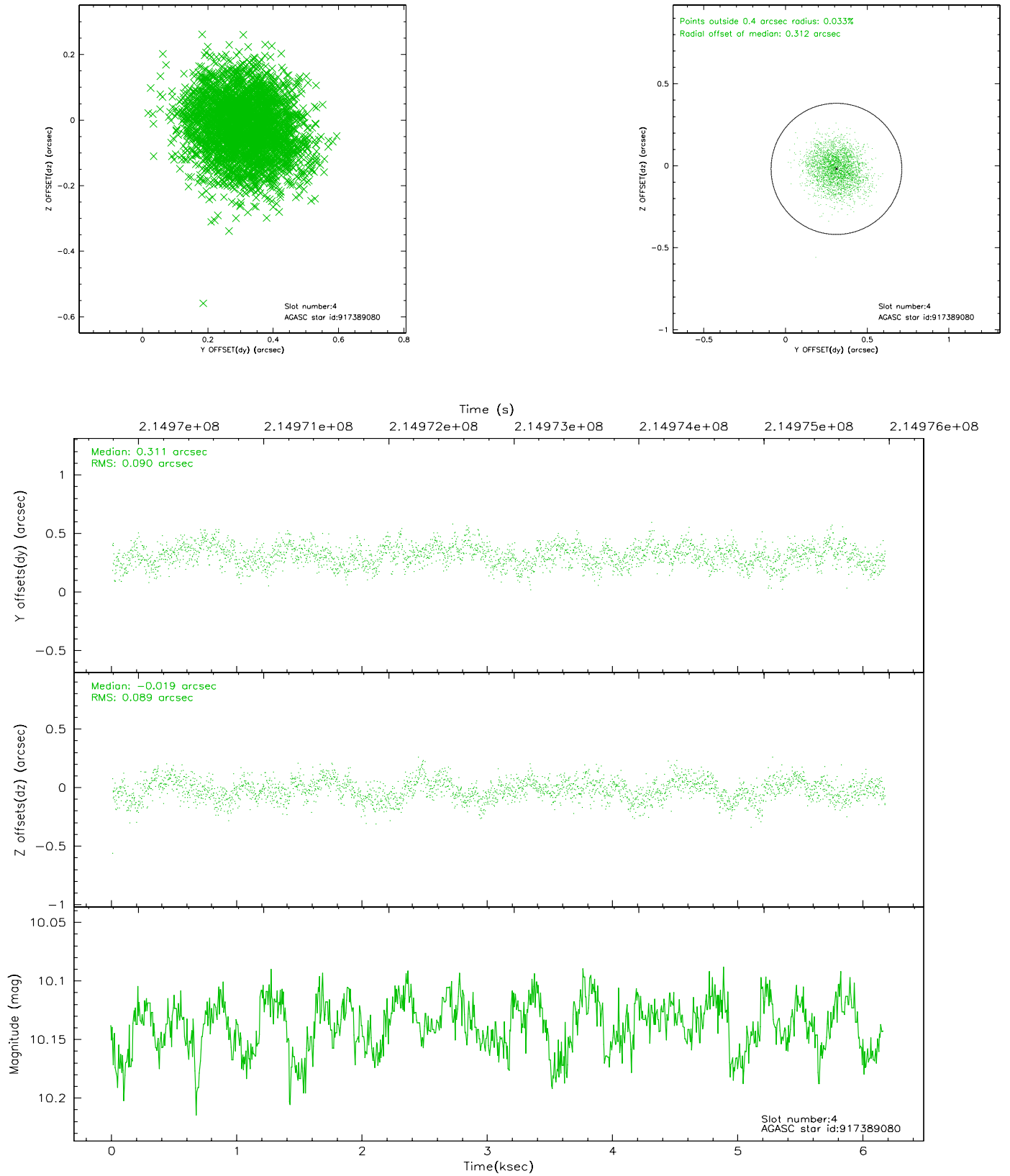


## 2.4 Star Slots

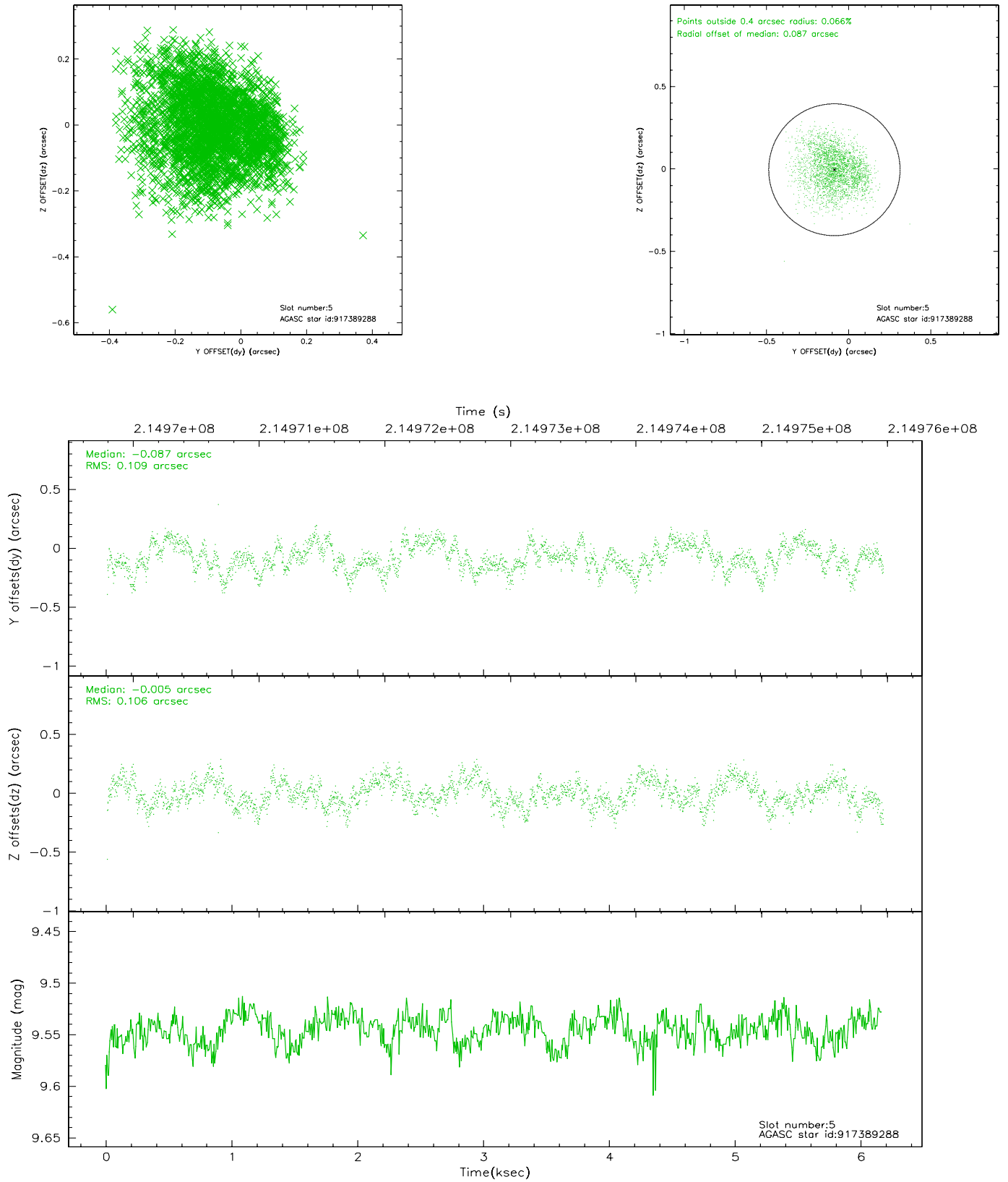
### 2.4.1 Slot 3



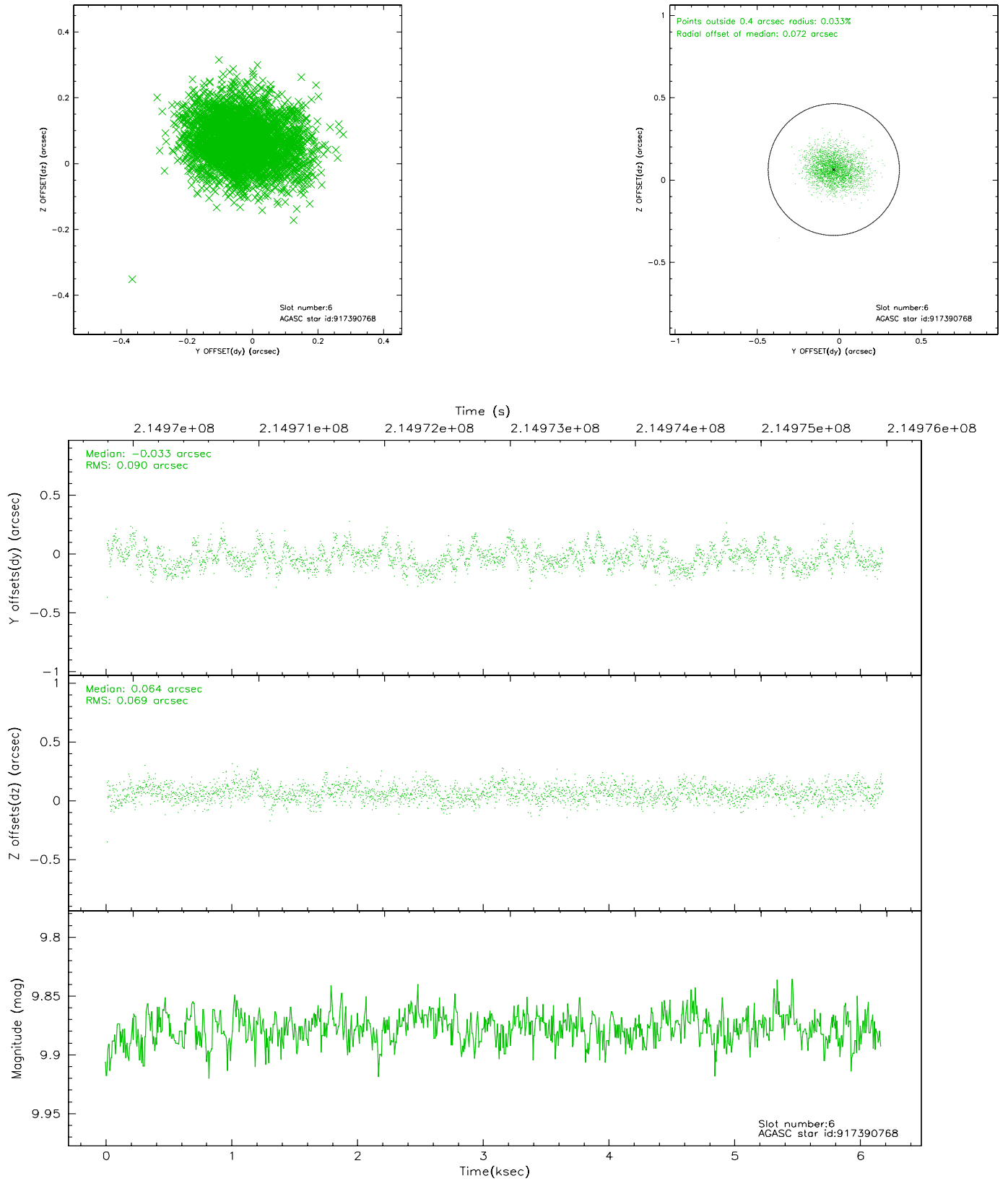
## 2.4.2 Slot 4



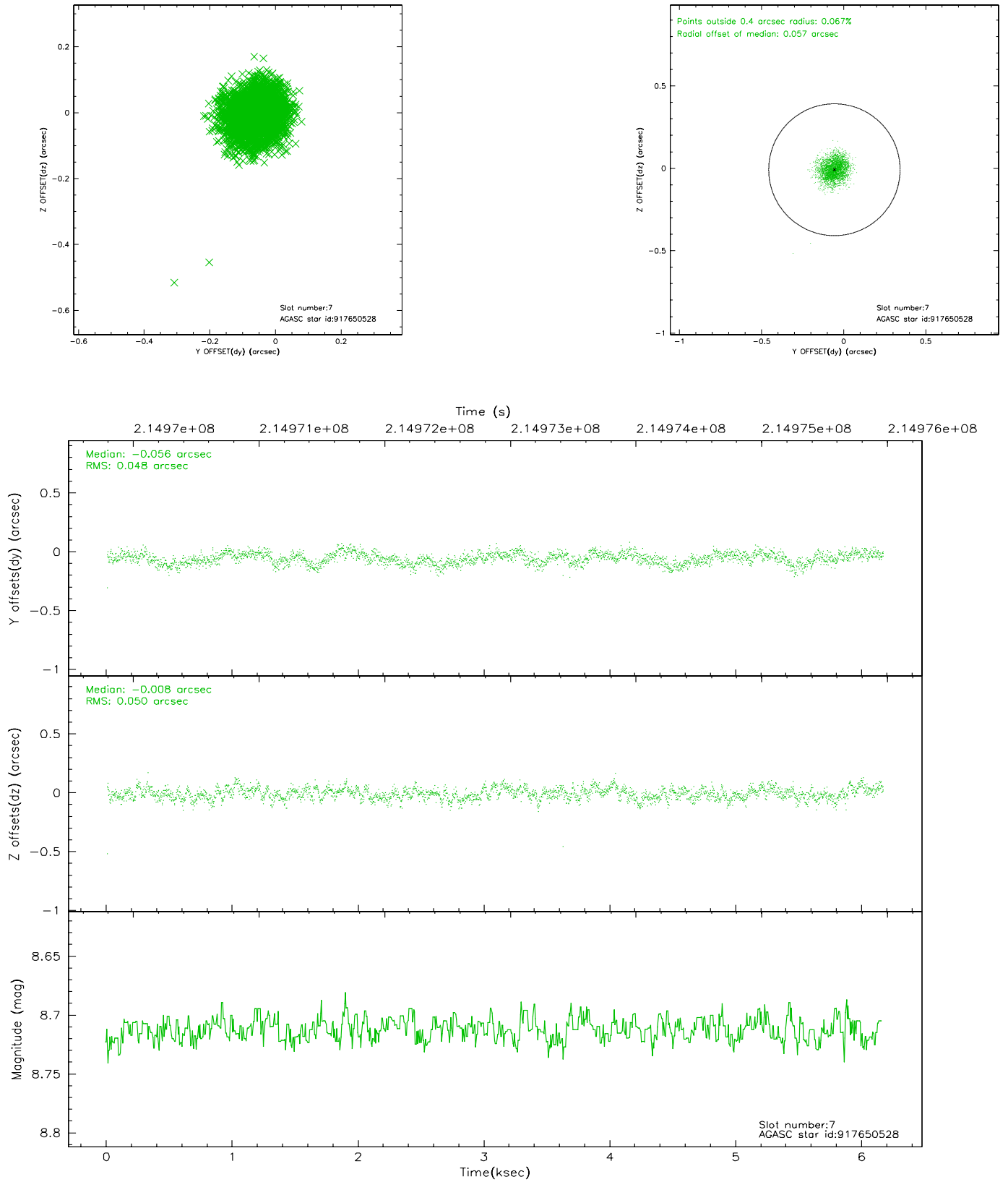
### 2.4.3 Slot 5



## 2.4.4 Slot 6

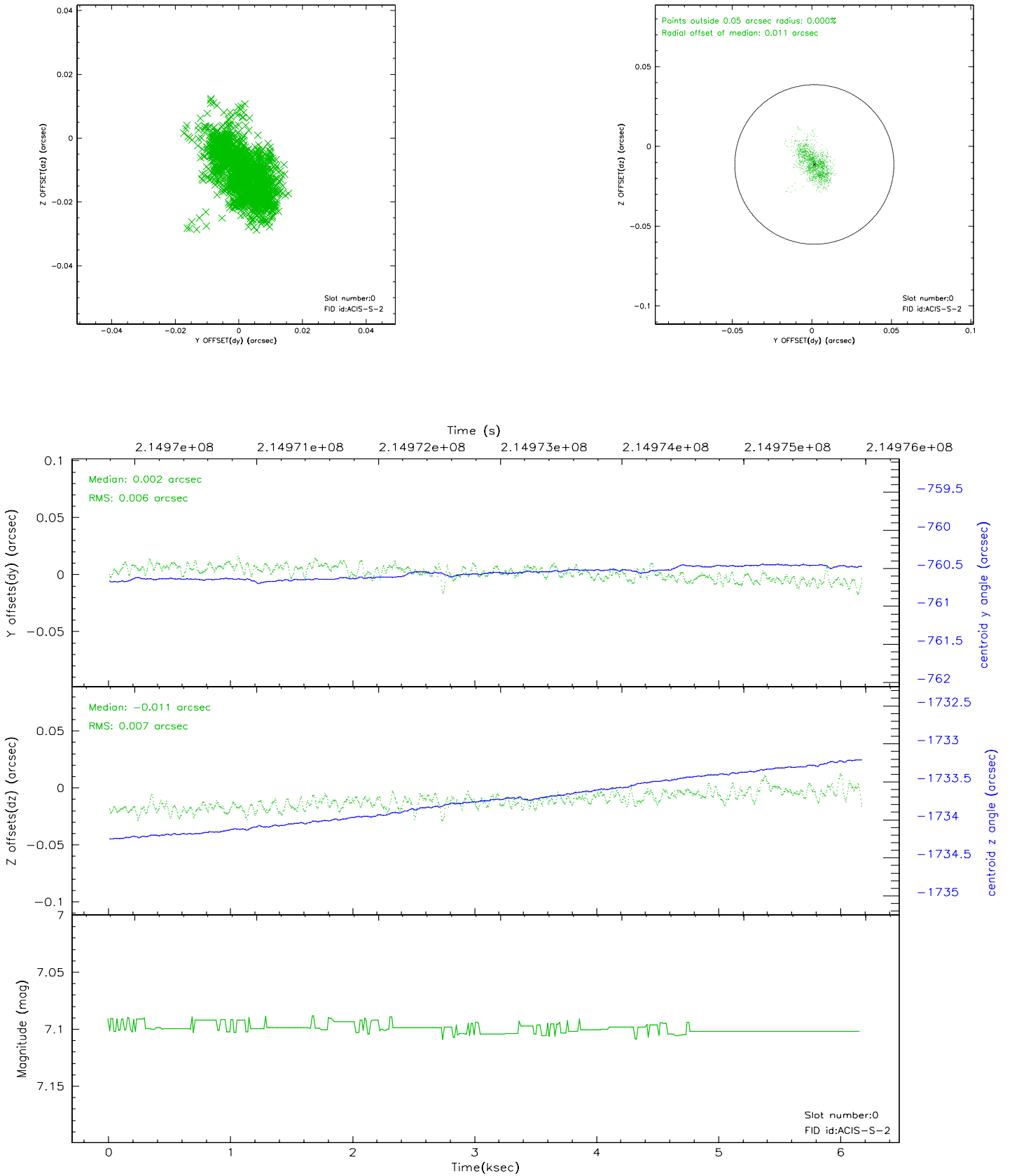


## 2.4.5 Slot 7

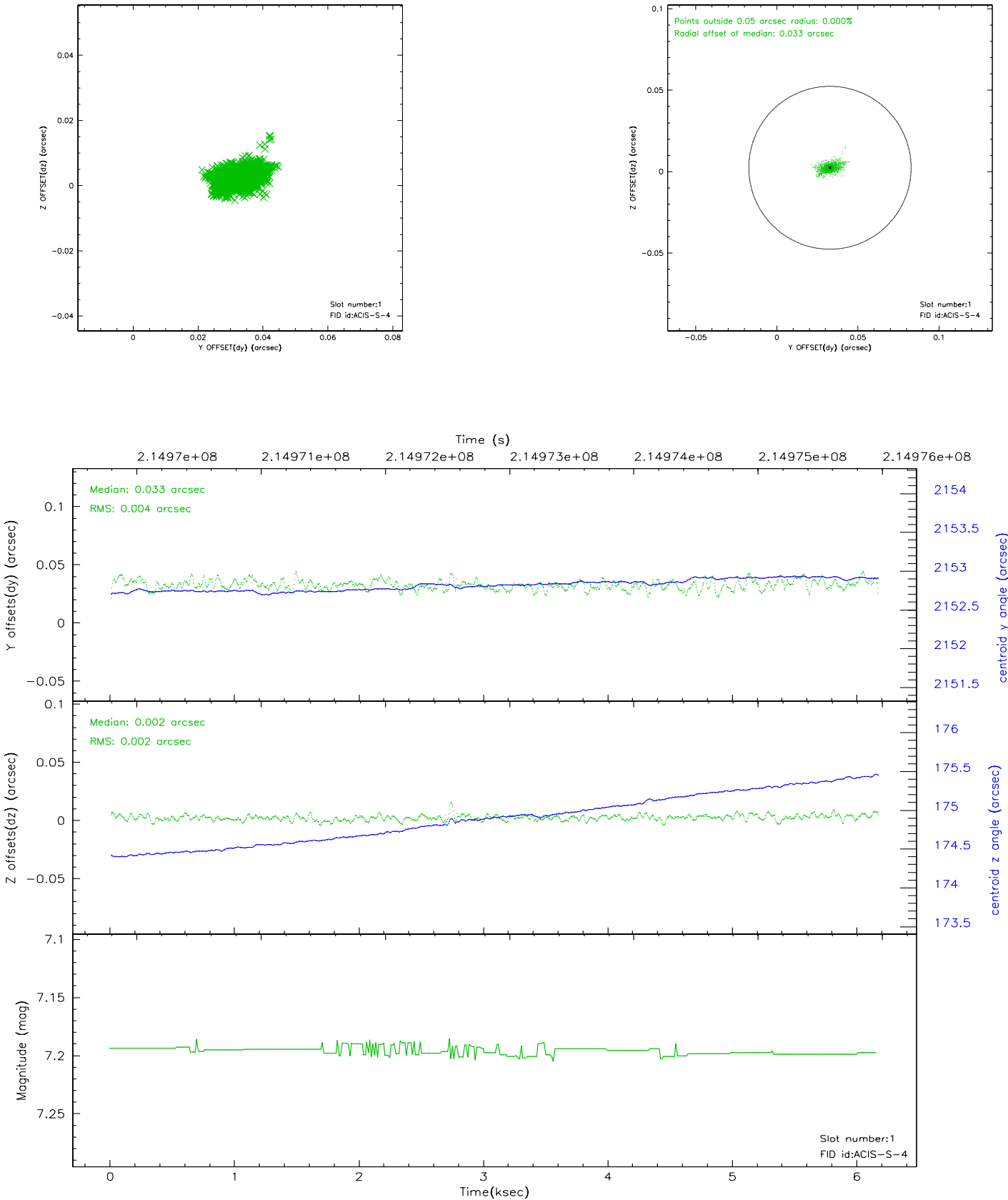


## 2.5 FID Slots

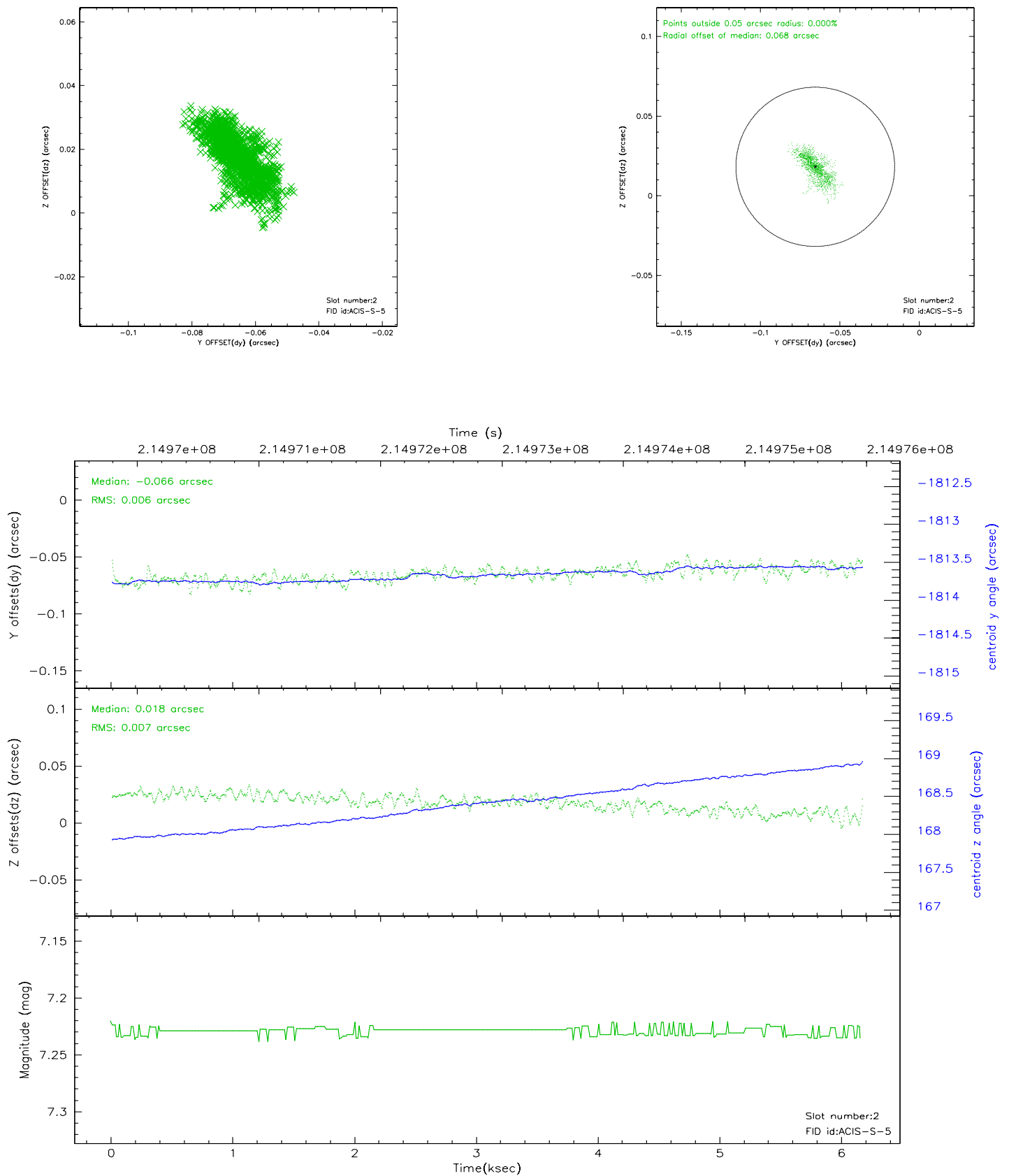
### 2.5.1 Slot 0



2.5.2 Slot 1

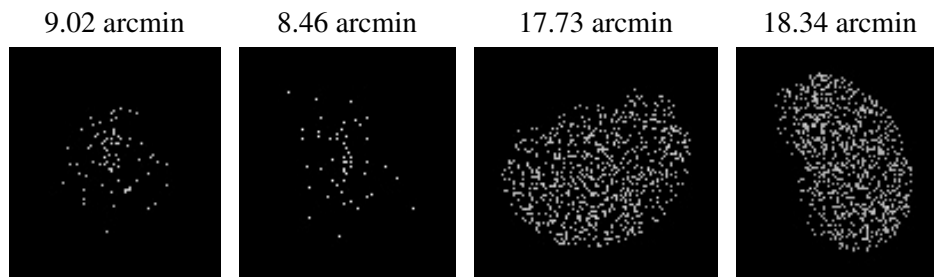


### 2.5.3 Slot 2





### 3 Point Sources



# A Summary

## A.1 Status

V&V Scientist	Jen Lauer
V&V Date (YYYY-MM-DD)	2006.04.13
V&V Edition	1
V&V Disposition and Status	OK
V&V Charge Time	6.159

## A.2 Comments

Monitor constraint met.