

# V&V Reference Report

## L2 ASCDS Version : 8.4.5

Observation 4702 - L2 Version 3  
Chandra X-Ray Center

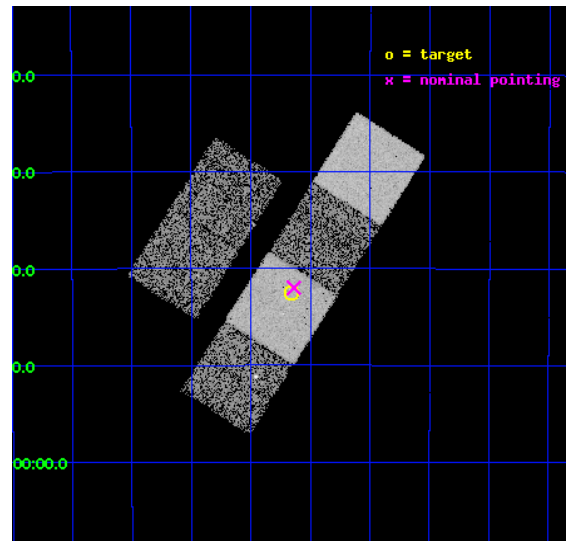
L2 Processing Date : Dec 2 2012

## Contents

<b>1</b>	<b>Front</b>	<b>2</b>
<b>2</b>	<b>OBI</b>	<b>3</b>
2.1	OBI . . . . .	3
2.1.1	Images . . . . .	3
2.1.2	Bias . . . . .	3
2.1.3	Parameters . . . . .	4
2.1.4	Events . . . . .	4
2.2	Compared Parameters . . . . .	5
2.3	Aspect . . . . .	6
2.4	Star Slots . . . . .	9
2.4.1	Slot 3 . . . . .	9
2.4.2	Slot 4 . . . . .	10
2.4.3	Slot 5 . . . . .	11
2.4.4	Slot 6 . . . . .	12
2.4.5	Slot 7 . . . . .	13
2.5	FID Slots . . . . .	14
2.5.1	Slot 0 . . . . .	14
2.5.2	Slot 1 . . . . .	15
2.5.3	Slot 2 . . . . .	16
<b>A</b>	<b>Summary</b>	<b>17</b>
A.1	Status . . . . .	17
A.2	Comments . . . . .	17

# 1 Front

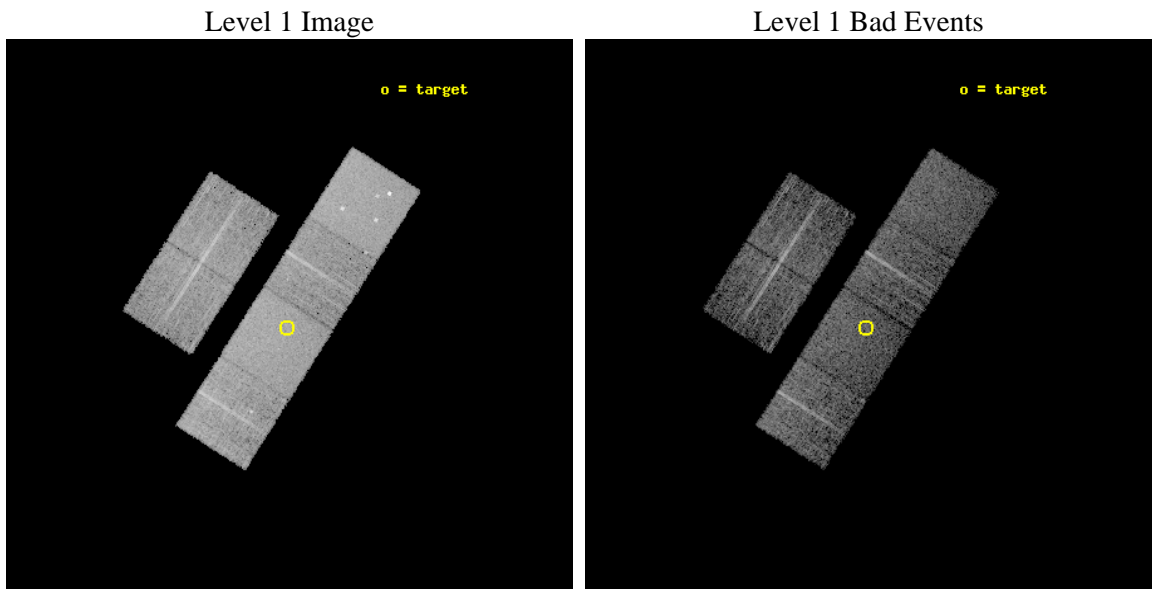
seq_num	600357	Sequence number
obs_id	4702	Observation id
title	Using the Sculptor Dwarf Spheroidal Galaxy to Constrain X-ray Binary Production in Population II	Proposal title
observer	Dr Thomas Maccarone	Principal investigator
object	SCULPTOR DWARF SPHEROIDAL	Source name
dtcycle	0	&#160
cycle	P	events from which exps? Prim/Second/Both
ra_targ	15.039167	Observer's specified target RA [deg]
dec_targ	-33.708889	Observer's specified target Dec [deg]
ra_nom	15.034745400191	Nominal RA [deg]
dec_nom	-33.700069055107	Nominal Dec [deg]
roll_nom	122.56744902054	Nominal Roll [deg]
revision	3	Processing version of data
ontime	5958.3999778032	Sum of GTIs [s]
livetime	5882.9511295666	Livetime [s]
ontime2	5958.3999778032	Sum of GTIs [s]
ontime3	5958.3999778032	Sum of GTIs [s]
ontime5	5958.3999778032	Sum of GTIs [s]
ontime6	5958.3999778032	Sum of GTIs [s]
ontime7	5958.3999778032	Sum of GTIs [s]
ontime8	5958.3999778032	Sum of GTIs [s]
l2events	69212	Number of level 2 events



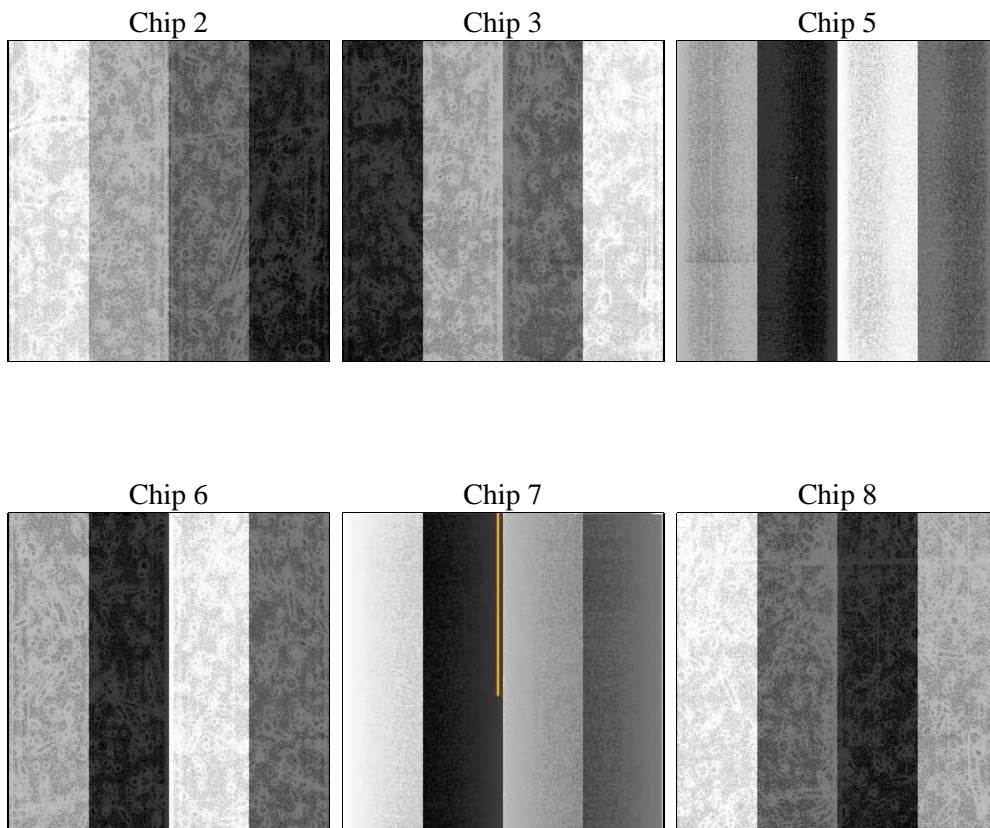
## 2 OBI

### 2.1 OBI

#### 2.1.1 Images



#### 2.1.2 Bias



### 2.1.3 Parameters

obi_num	0	Obi number	sched_exp_time	6000.000000	[s] Scheduled observation exposure time
ascdsver	8.4.5	Processing system revision	ontime	5958.3999778032	Sum of GTIs [s]
caldsver	4.5.2	&#160	ontime2	5958.3999778032	Sum of GTIs [s]
date	2012-12-03T00:25:54	Date and time of file creation	ontime3	5958.3999778032	Sum of GTIs [s]
revision	3	Processing version of data	ontime5	5958.3999778032	Sum of GTIs [s]
			ontime6	5958.3999778032	Sum of GTIs [s]
			ontime7	5958.3999778032	Sum of GTIs [s]
			ontime8	5958.3999778032	Sum of GTIs [s]
			l1events	306971	Number of level 1 events

### 2.1.4 Events

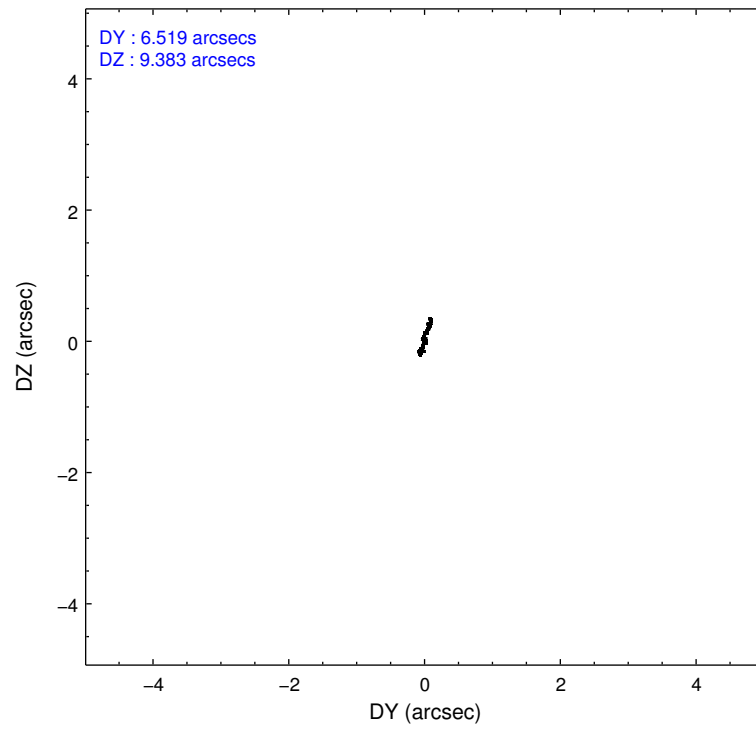
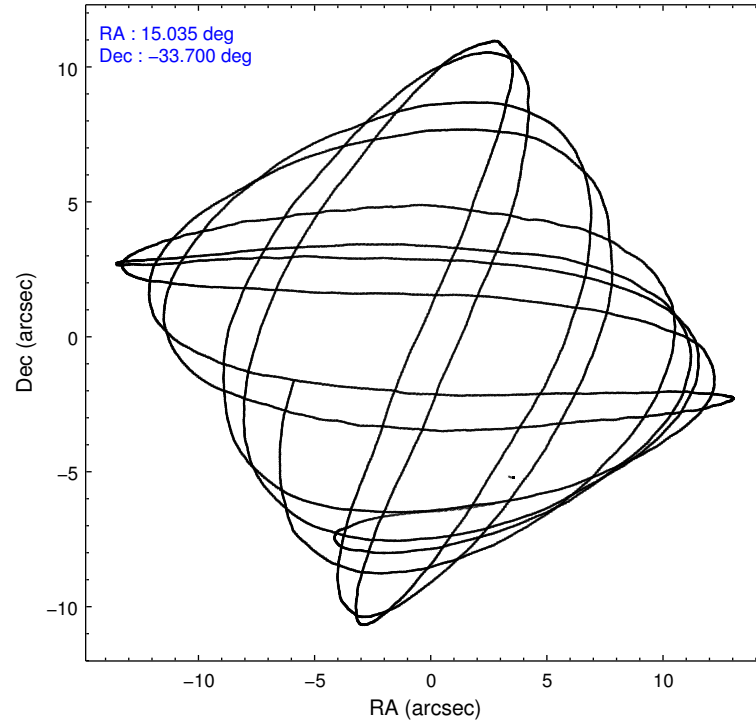
	ccd 2	ccd 3	ccd 5	ccd 6	ccd 7	ccd 8		ccd 2	ccd 3	ccd 5	ccd 6	ccd 7	ccd 8
level 1 events	43637	41327	66054	42420	58235	55298	grade 0 events	2192	2252	4117	2039	2100	3813
rejected events	38618	36273	34524	37246	34368	43547		5%	5%	6%	4%	3%	6%
rejected %	88%	87%	52%	87%	59%	78%	grade 1 events	24	29	104	22	42	35
								0%	0%	0%	0%	0%	0%
							grade 2 events	1043	1001	9759	1061	4812	2540
								2%	2%	14%	2%	8%	4%
							grade 3 events	455	515	1191	543	2126	1308
								1%	1%	1%	1%	3%	2%
							grade 4 events	502	504	1110	483	2073	1181
								1%	1%	1%	1%	3%	2%
							grade 5 events	1757	1865	4767	1966	5553	2675
								4%	4%	7%	4%	9%	4%
							grade 6 events	835	783	15372	1048	12778	2916
								1%	1%	23%	2%	21%	5%
							grade 7 events	36829	34378	29634	35258	28751	40830
								84%	83%	44%	83%	49%	73%

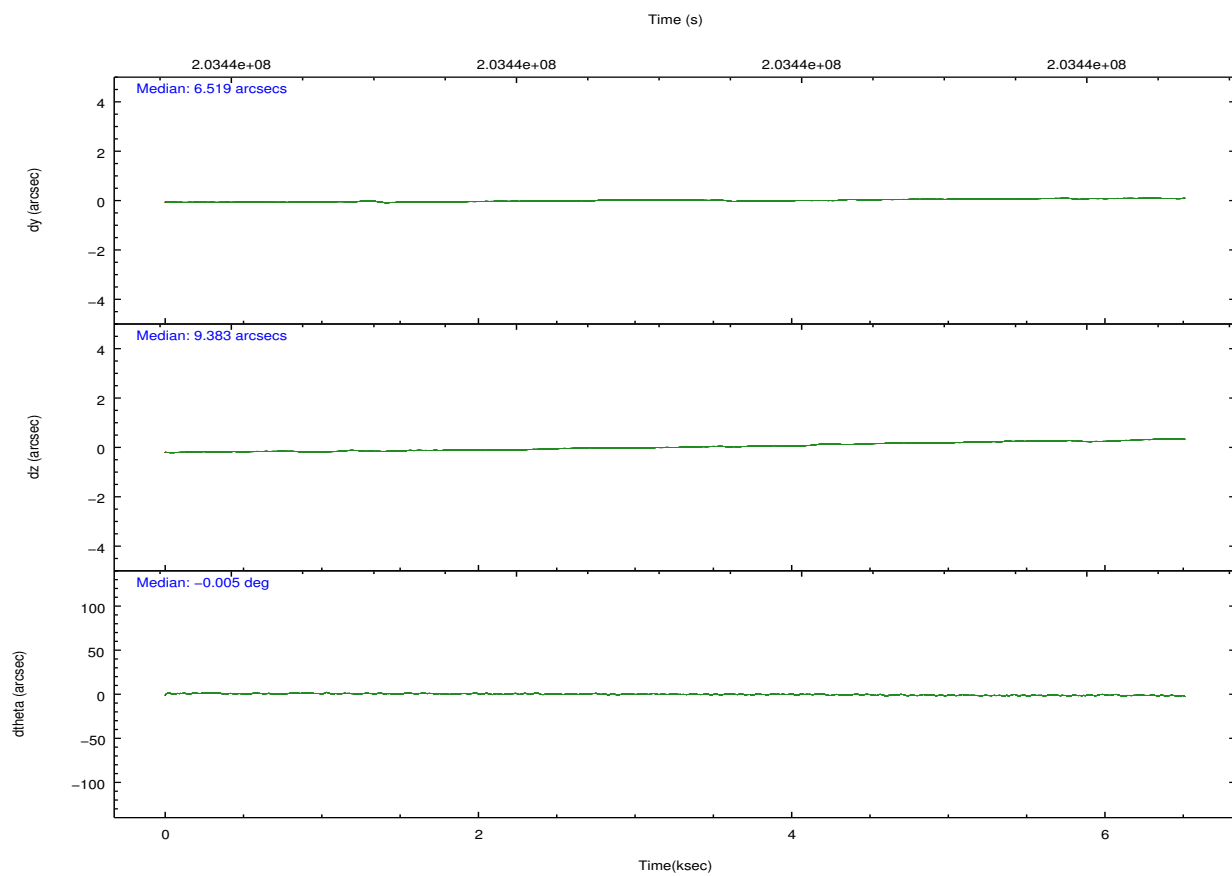
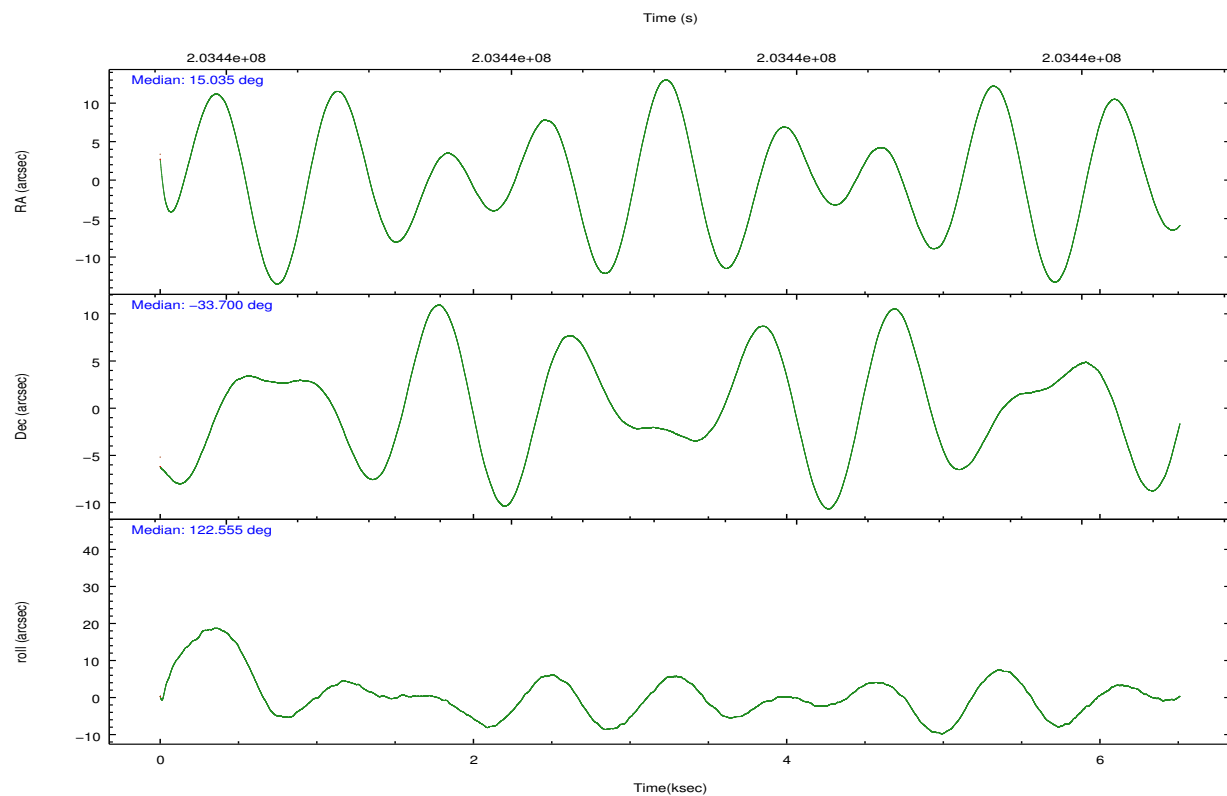


## 2.2 Compared Parameters

Parameter	Planned	Actual	Parameter	Planned	Actual
Instrument	ACIS	ACIS	Obspar format version number	7	7
Detector	ACIS-235678	ACIS-235678	Obspar file type	PREDICTED	ACTUAL
Grating	NONE	NONE	Obspar update status	NONE	UPDATED
Data mode	VFAINT	VFAINT	Number of optional ACIS chips dropped	0	0
Observation mode	POINTING	POINTING	On-chip summing requested	N	N
[deg] Pointing RA	15.063984	15.03474540019135	Subarray requested	NONE	NONE
[deg] Pointing Dec	-33.712164	-33.70006905510741	Alternating exposures requested	N	N
[deg] Pointing Roll	122.427083	122.5674490205403	[s] Primary exposure time	0.000000	3.2
[mm] SIM focus pos	-0.684267	-0.6828225247311905			
[mm] SIM defocus	0	0.001444936568705701			
[mm] SIM translation stage pos	-190.132523	-190.1400660498719			
[mm] SIM translation stage offset	0	0.00754346686406393			
[s] Observation start time (MET)	203438366.184000	203437235.88103			
Observation start date	2004-06-12T14:38:22	2004-06-12T14:20:35			
[s] Observation end time (MET)	203444366.184000	203444955.66887			
Observation end date	2004-06-12T16:18:22	2004-06-12T16:29:15			
Read mode	TIMED	TIMED			

## 2.3 Aspect



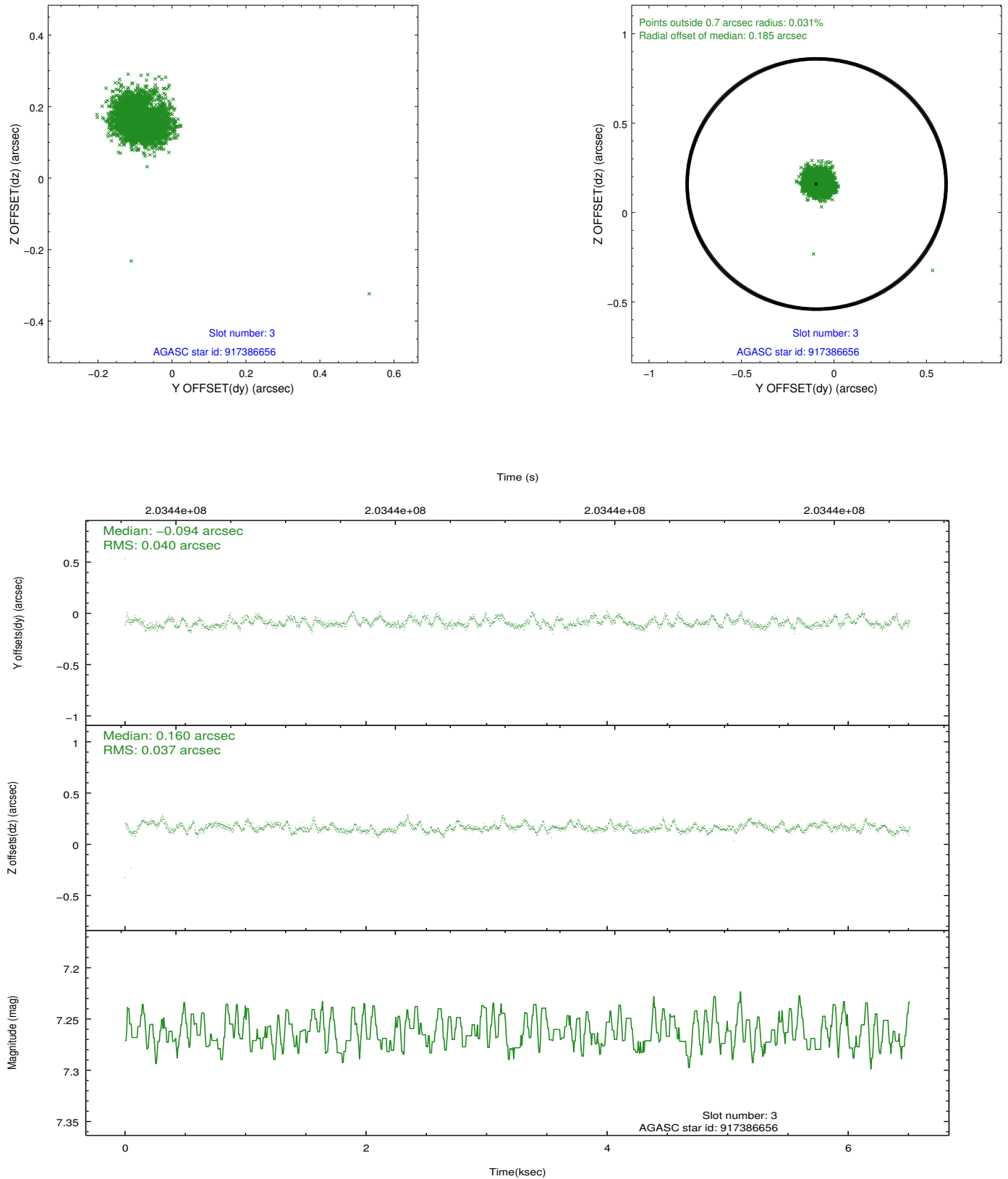


### Slot Statistics

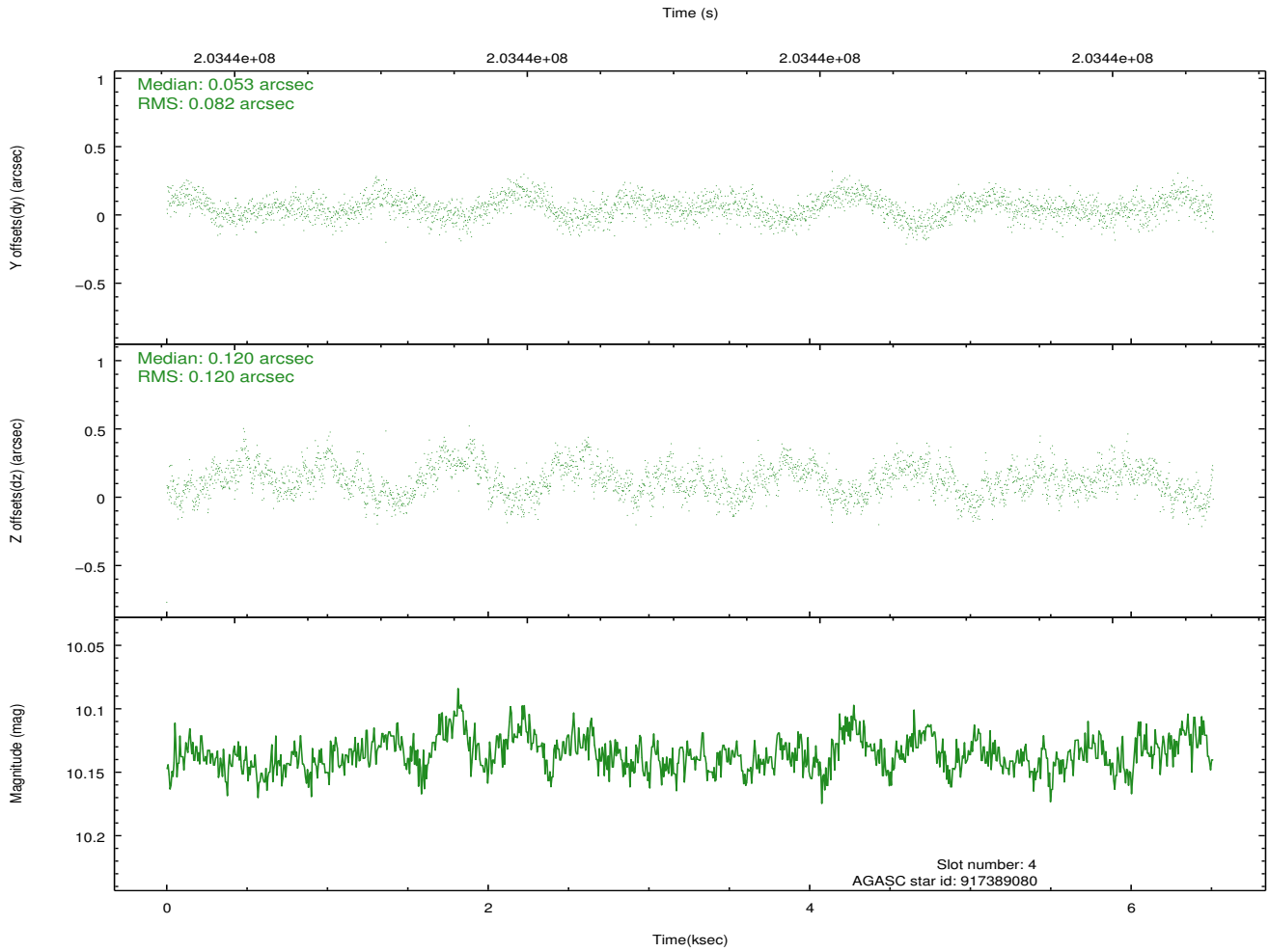
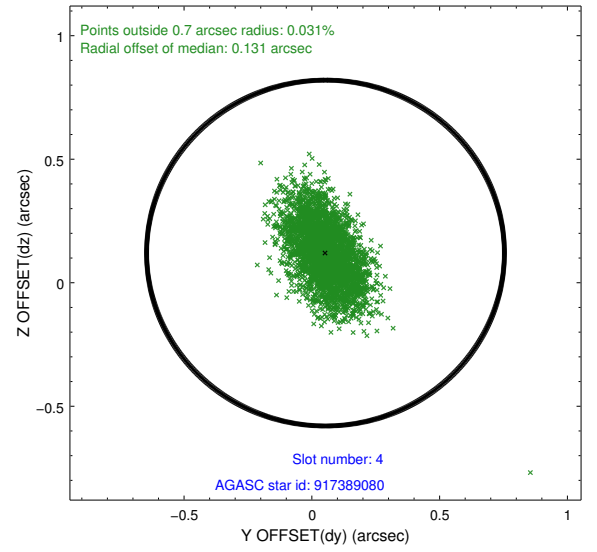
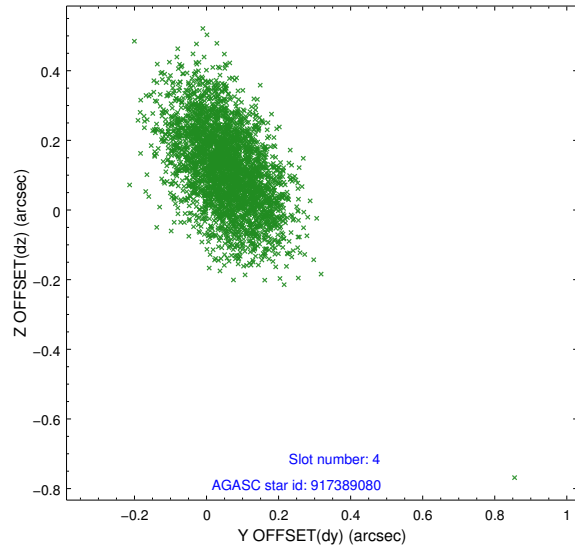
slot	status	id	mag	n_pts	med_dy	med_dz	dr1	dr2	ra	dec	mean_y	mean_z
0	FID	ACIS-S-4	7.20	1589	0.072	0.007	0.007	0.012	0.000000	0.000000	2154.16	178.04
1	FID	ACIS-S-5	7.23	1588	-0.093	0.007	0.006	0.011	0.000000	0.000000	-1811.04	171.58
2	FID	ACIS-S-6	7.34	1589	-0.008	-0.000	0.009	0.015	0.000000	0.000000	401.36	815.33
3	GUIDE	917386656	7.26	3177	-0.094	0.160	0.056	0.090	15.342124	-33.359890	621.87	-1385.09
4	GUIDE	917389080	10.14	3175	0.053	0.120	0.152	0.256	15.722484	-33.662555	-911.39	-1758.29
5	GUIDE	917389288	9.57	3174	-0.099	0.282	0.103	0.165	15.394706	-33.185862	1064.17	-1856.13
6	GUIDE	917650528	8.72	3171	-0.016	-0.256	0.089	0.140	14.274554	-33.869842	779.03	2300.32
7	GUIDE	917651048	9.66	3173	0.153	-0.299	0.180	0.272	14.655628	-34.424089	-1514.66	2399.38

## 2.4 Star Slots

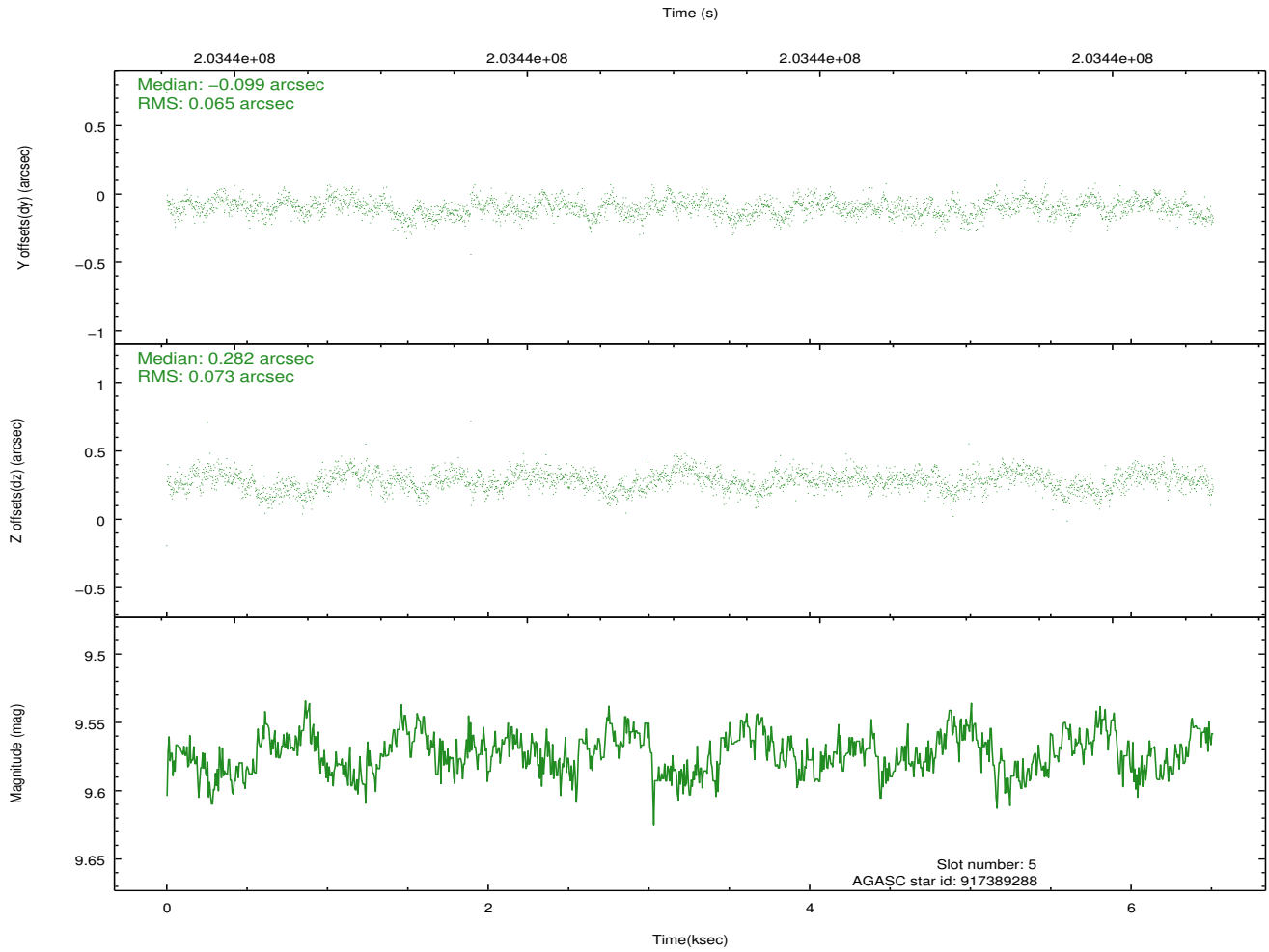
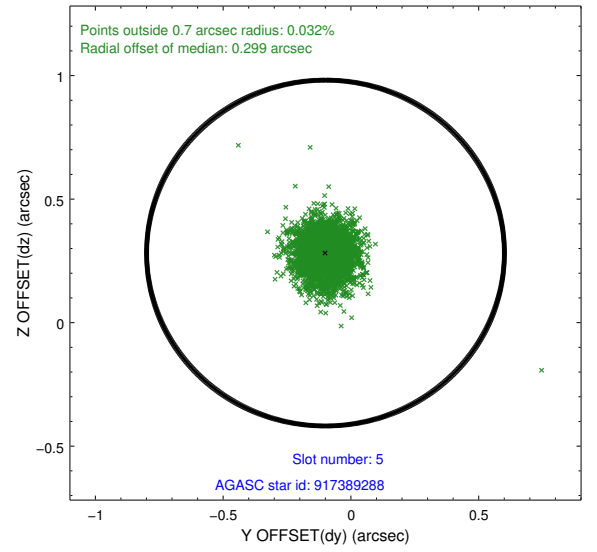
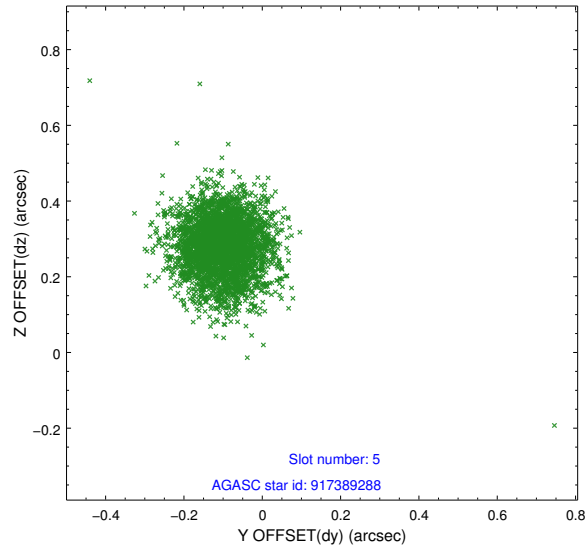
### 2.4.1 Slot 3



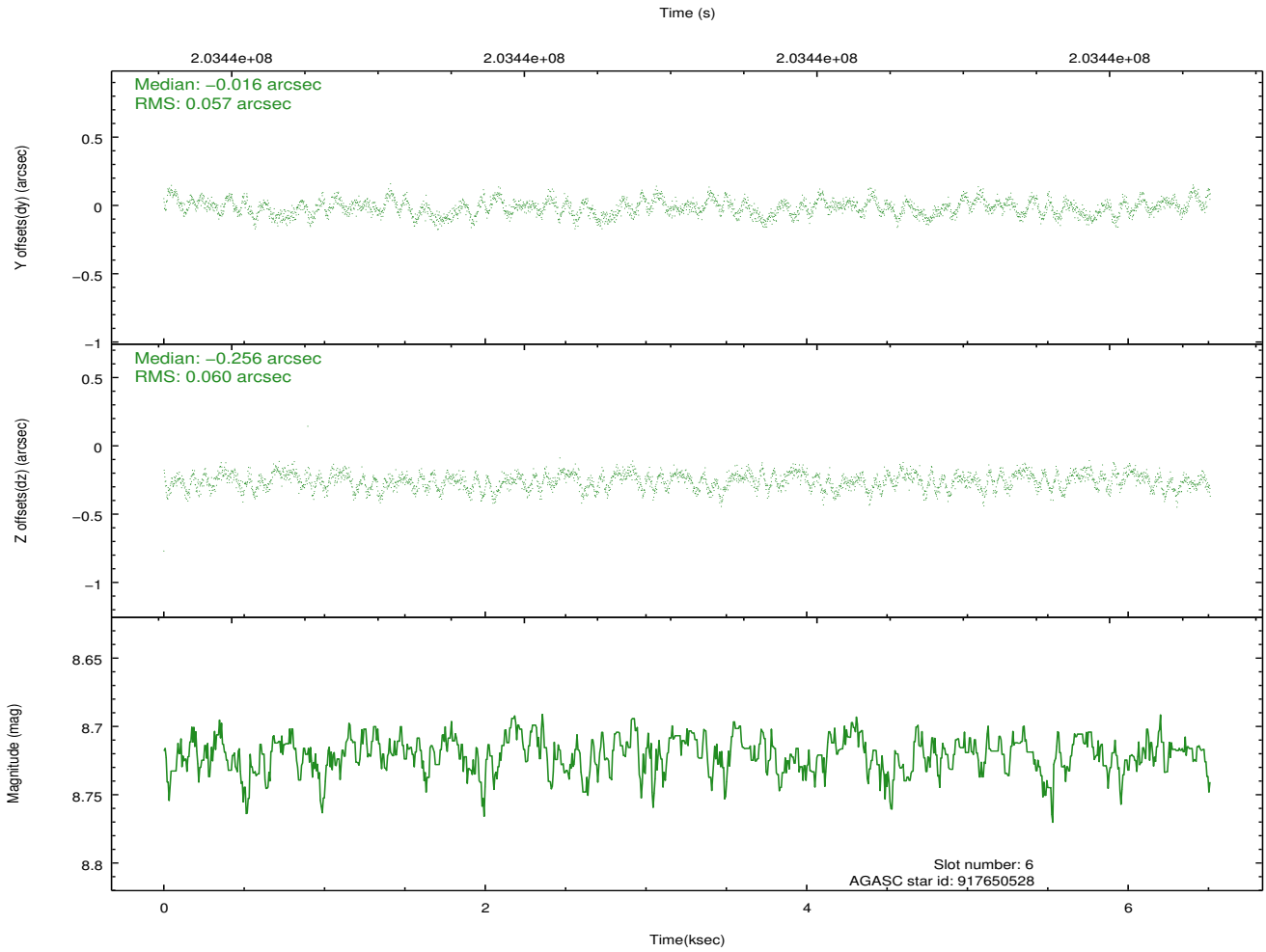
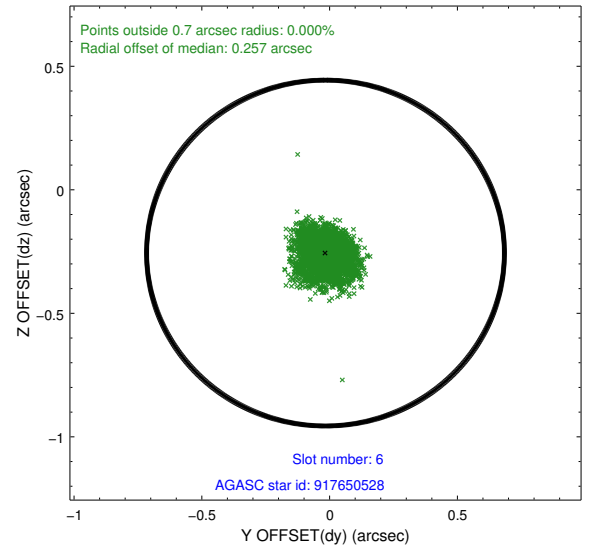
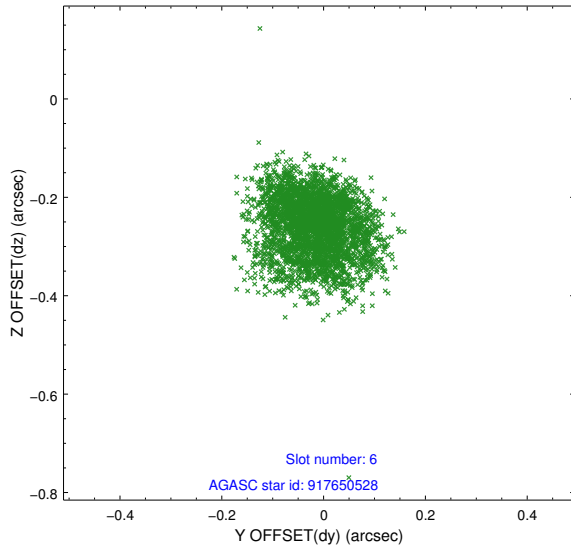
## 2.4.2 Slot 4



### 2.4.3 Slot 5

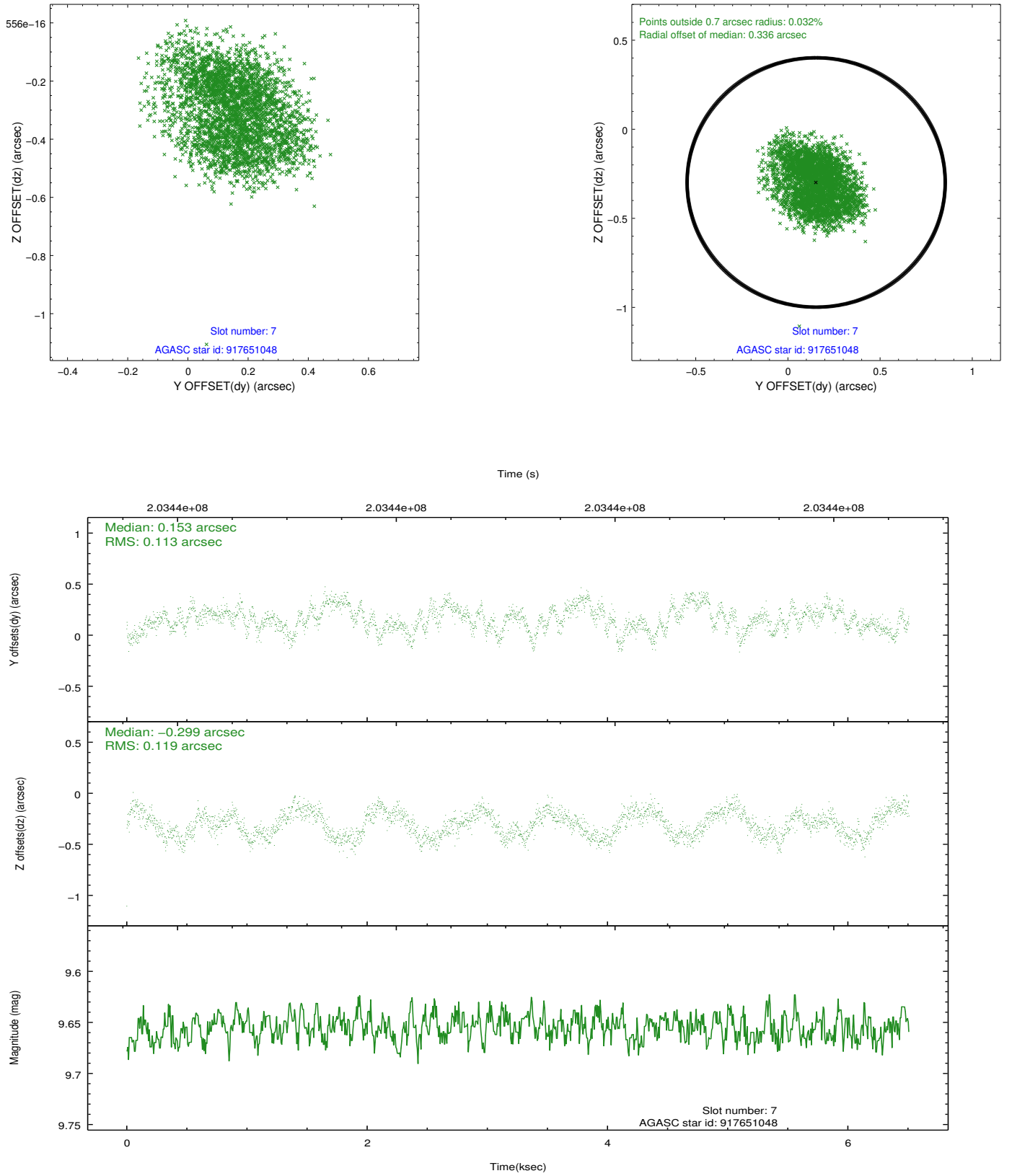


## 2.4.4 Slot 6



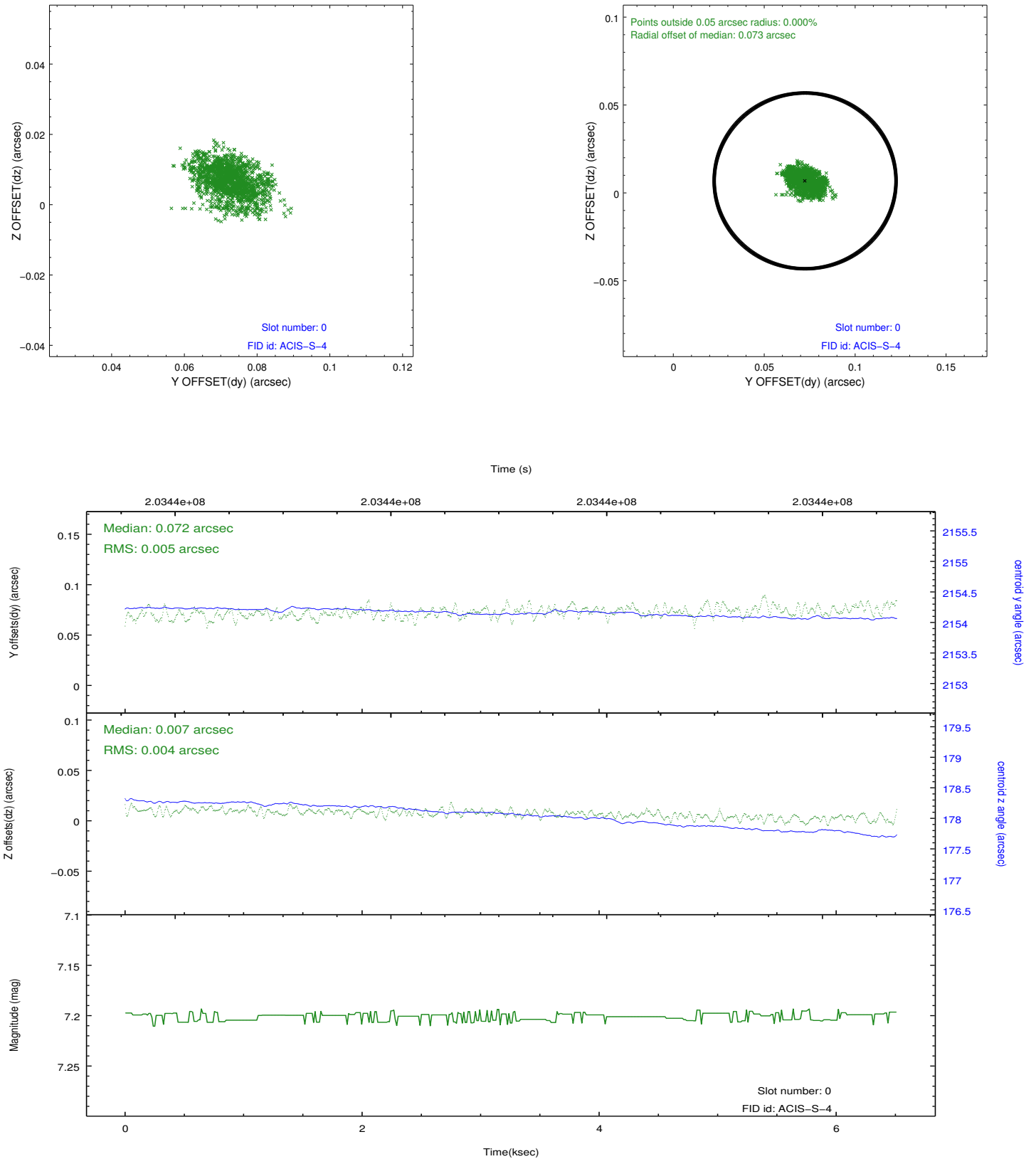


## 2.4.5 Slot 7

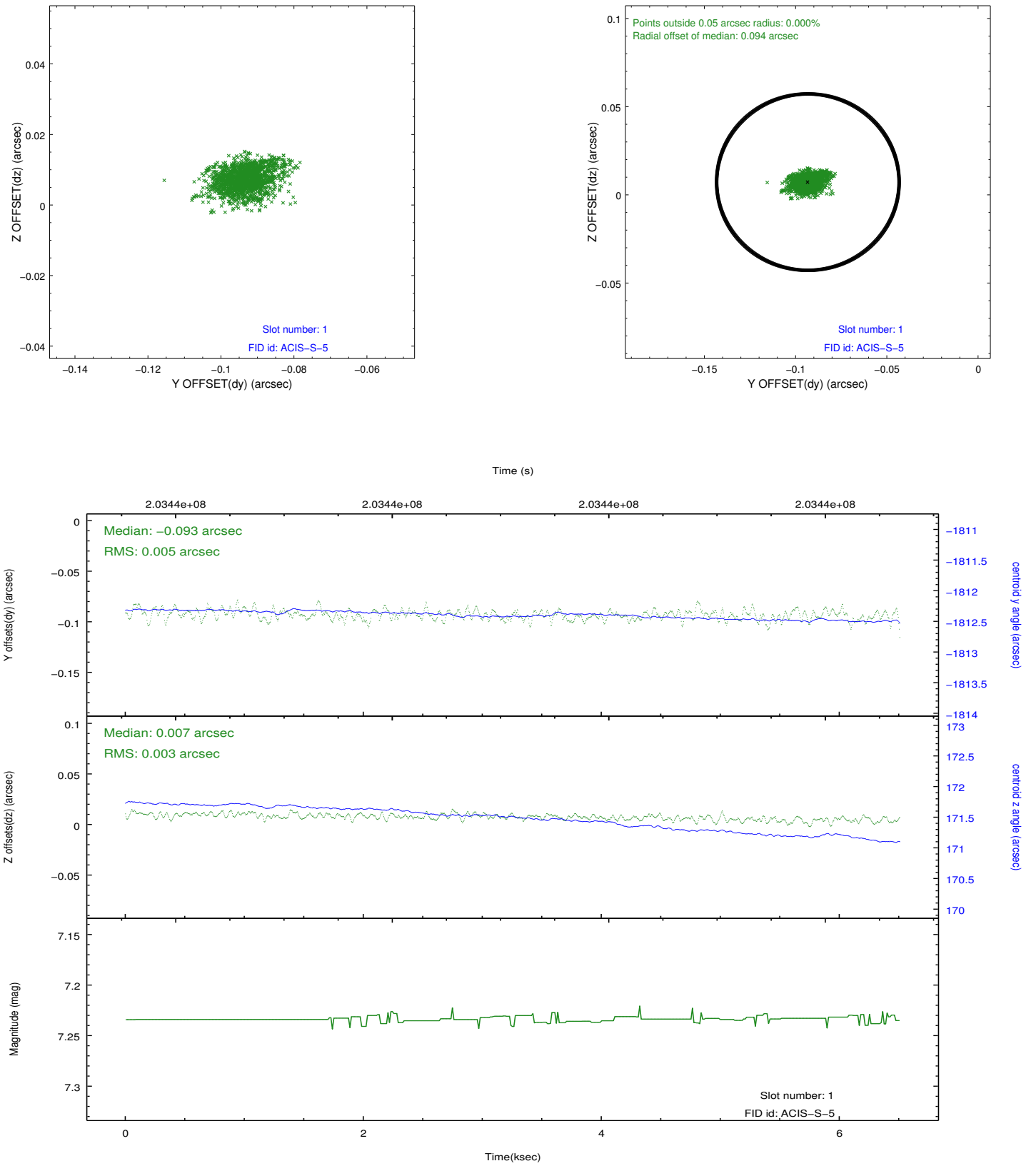


## 2.5 FID Slots

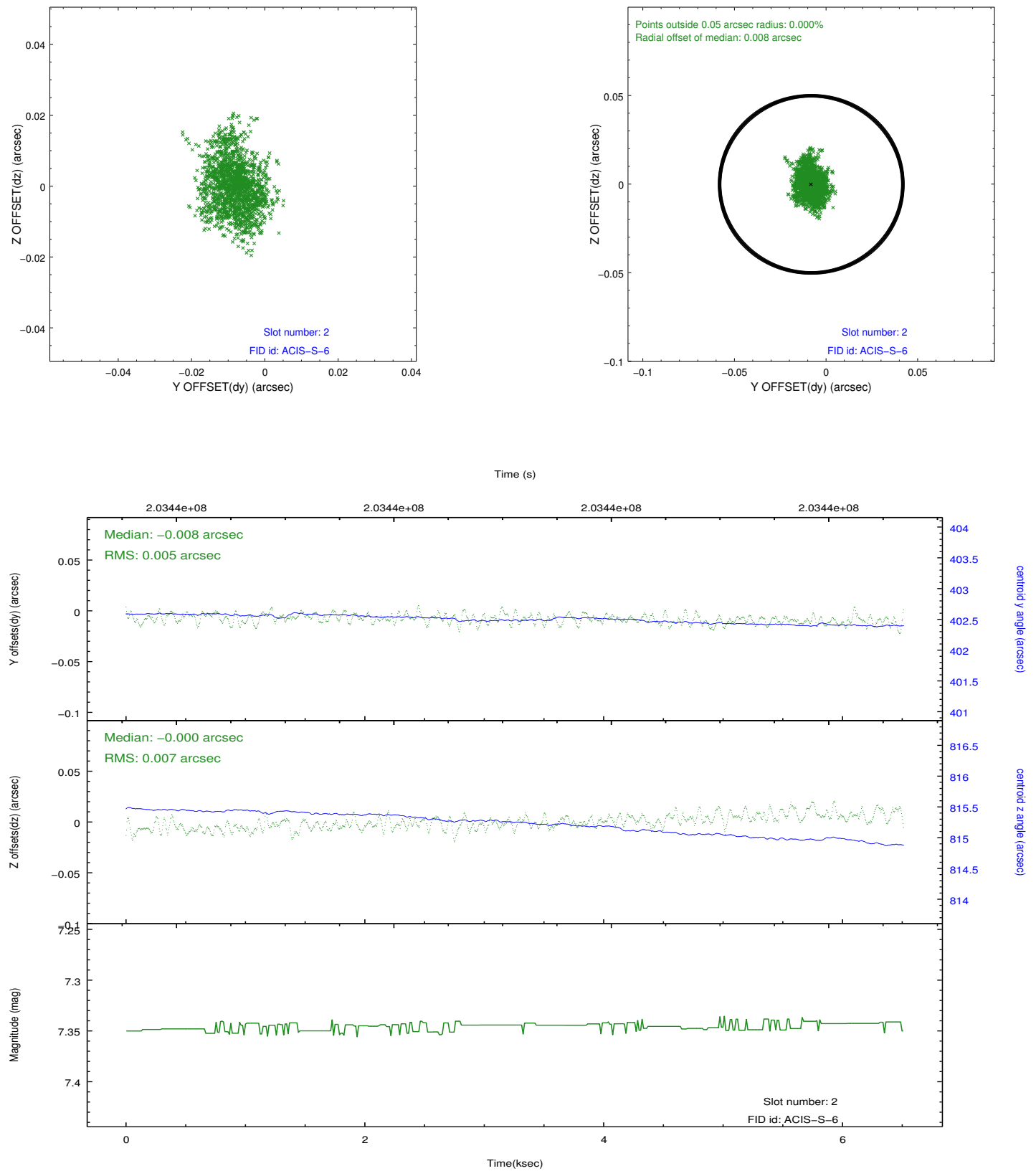
### 2.5.1 Slot 0



## 2.5.2 Slot 1



### 2.5.3 Slot 2



## A Summary

### A.1 Status

V&V Scientist	Jen Lauer
V&V Date (YYYY-MM-DD)	2012.12.17
V&V Edition	1
V&V Disposition and Status	OK
V&V Charge Time	5.961

### A.2 Comments

Monitor constraint met. Joint Proposal: NOAO