

V&V Reference Report

L2 ASCDS Version : 8.5

Observation 4652 - L2 Version 3
Chandra X-Ray Center

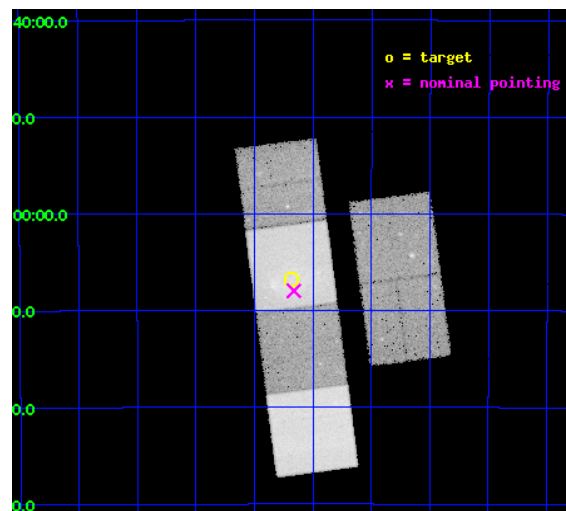
L2 Processing Date : Dec 9 2012

Contents

1	Front	2
2	OBI	3
2.1	OBI	3
2.1.1	Images	3
2.1.2	Bias	3
2.1.3	Parameters	4
2.1.4	Events	4
2.2	Compared Parameters	5
2.3	Aspect	6
2.4	Star Slots	9
2.4.1	Slot 3	9
2.4.2	Slot 4	10
2.4.3	Slot 5	11
2.4.4	Slot 6	12
2.4.5	Slot 7	13
2.5	FID Slots	14
2.5.1	Slot 0	14
2.5.2	Slot 1	15
2.5.3	Slot 2	16
A	Summary	17
A.1	Status	17
A.2	Comments	17

1 Front

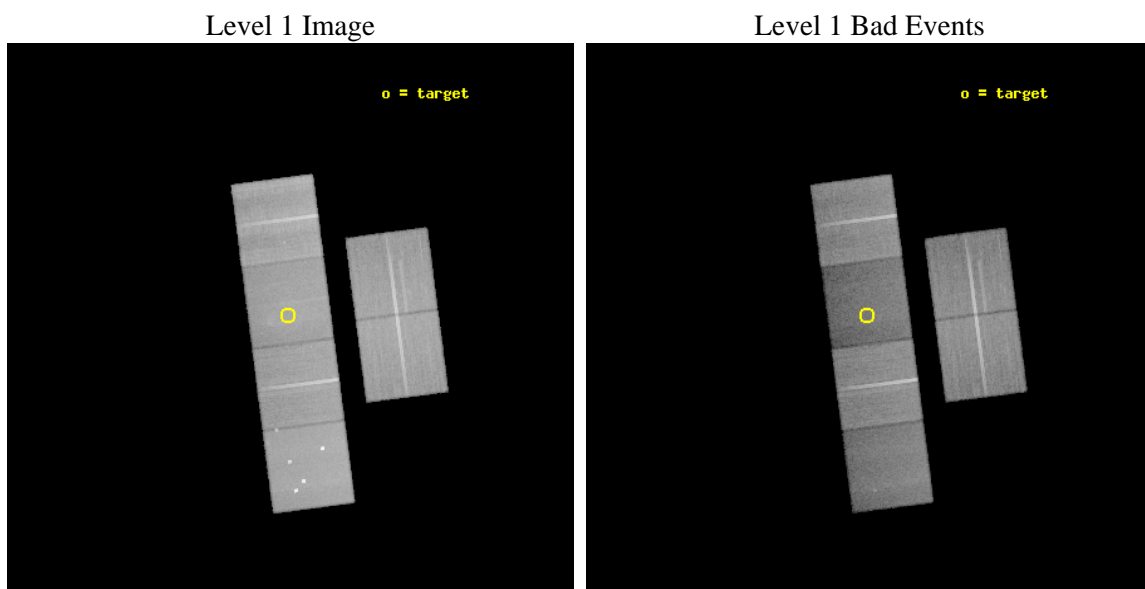
seq_num	500471	Sequence number
obs_id	4652	Observation id
title	Chandra Studies of New Galactic Ejecta-Dominated SNRS	Proposal tit
observer	Prof. John Hughes	Principal investigator
object	G352.7-0.1	Source name
dtcycle	0	
cycle	P	events from which exps? Prim/Second/Both
ra_targ	261.920833	Observer's specified target RA [deg]
dec_targ	-35.1125	Observer's specified target Dec [deg]
ra_nom	261.9154781446	Nominal RA [deg]
dec_nom	-35.132803560244	Nominal Dec [deg]
roll_nom	262.59200514963	Nominal Roll [deg]
revision	3	Processing version of data
ontime	45155.199831784	Sum of GTIs [s]
livetime	44583.417502317	Livetime [s]
ontime2	45148.717851341	Sum of GTIs [s]
ontime3	45145.476990759	Sum of GTIs [s]
ontime5	45155.199831784	Sum of GTIs [s]
ontime6	45145.4768911	Sum of GTIs [s]
ontime7	45155.199831784	Sum of GTIs [s]
ontime8	45155.199831784	Sum of GTIs [s]
l2events	406152	Number of level 2 events



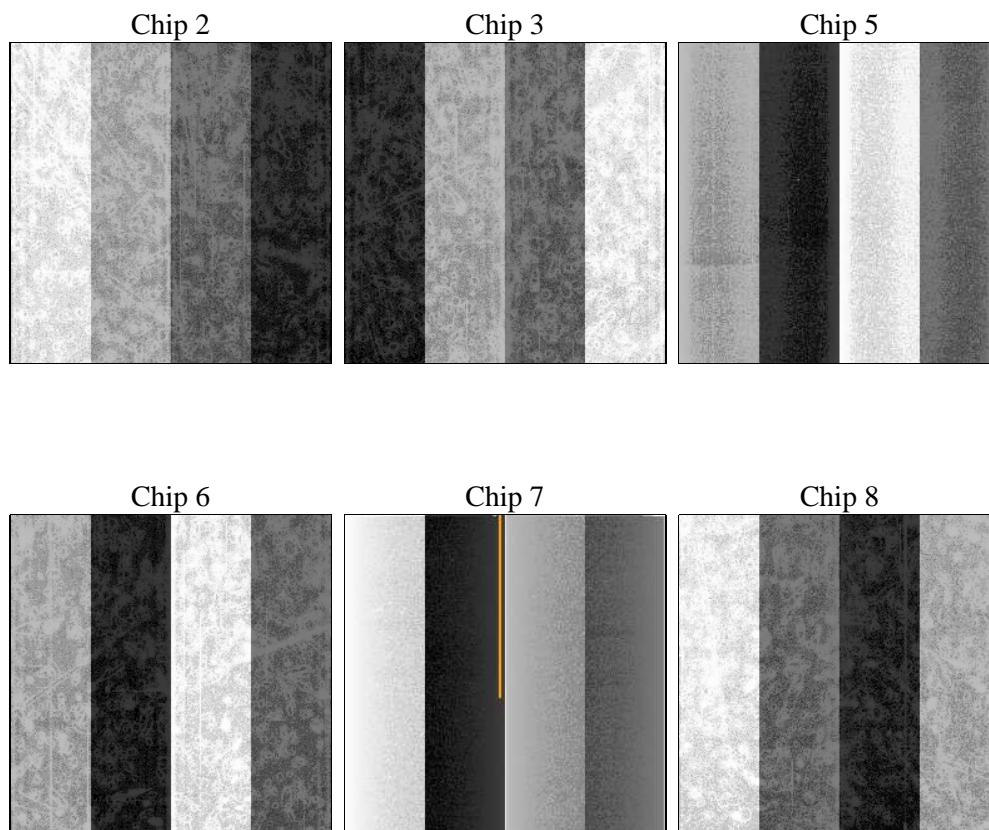
2 OBI

2.1 OBI

2.1.1 Images



2.1.2 Bias



2.1.3 Parameters

obi_num	0	Obi number	sched_exp_time	45000.000000	[s] Scheduled observation exposure time
ascdsver	8.5	Processing system revision	ontime	45155.199831784	Sum of GTIs [s]
caldsver	4.5.4	 	ontime2	45148.717851341	Sum of GTIs [s]
date	2012-12-09T19:20:38	Date and time of file creation	ontime3	45145.476990759	Sum of GTIs [s]
revision	3	Processing version of data	ontime5	45155.199831784	Sum of GTIs [s]
			ontime6	45145.4768911	Sum of GTIs [s]
			ontime7	45155.199831784	Sum of GTIs [s]
			ontime8	45155.199831784	Sum of GTIs [s]
			l1events	1850947	Number of level 1 events

2.1.4 Events

	ccd 2	ccd 3	ccd 5	ccd 6	ccd 7	ccd 8		ccd 2	ccd 3	ccd 5	ccd 6	ccd 7	ccd 8
level 1 events	306279	279625	356836	287986	272442	347779	grade 0 events	11248	10661	37099	12437	15575	23249
rejected events	277932	252471	157502	256972	131305	266920		3%	3%	10%	4%	5%	6%
rejected %	90%	90%	44%	89%	48%	76%	grade 1 events	167	139	594	148	277	246
								0%	0%	0%	0%	0%	0%
							grade 2 events	6556	5579	55502	6432	30685	18603
								2%	1%	15%	2%	11%	5%
							grade 3 events	2946	3127	8872	3370	13905	9163
								0%	1%	2%	1%	5%	2%
							grade 4 events	2985	3060	8889	3254	14234	8500
								0%	1%	2%	1%	5%	2%
							grade 5 events	8084	9082	28601	9546	28722	14178
								2%	3%	8%	3%	10%	4%
							grade 6 events	4677	4792	89370	5593	67092	21441
								1%	1%	25%	1%	24%	6%
							grade 7 events	269616	243185	127909	247206	101952	252399
								88%	86%	35%	85%	37%	72%

2.2 Compared Parameters

Parameter	Planned	Actual	Parameter	Planned	Actual
Instrument	ACIS	ACIS	Obspar format version number	7	7
Detector	ACIS-235678	ACIS-235678	Obspar file type	PREDICTED	ACTUAL
Grating	NONE	NONE	Obspar update status	NONE	UPDATED
Data mode	VFAINT	VFAINT	Number of optional ACIS chips dropped	0	0
Observation mode	POINTING	POINTING	On-chip summing requested	N	N
[deg] Pointing RA	261.902279	261.9154781446032	Subarray requested	NONE	NONE
[deg] Pointing Dec	-35.107796	-35.13280356024379	Alternating exposures requested	N	N
[deg] Pointing Roll	262.427788	262.592005149634	[s] Primary exposure time	0.000000	3.2
[mm] SIM focus pos	-0.684267	-0.6828225247311905			
[mm] SIM defocus	0	0.001444936568705701			
[mm] SIM translation stage pos	-190.132523	-190.1400660498719			
[mm] SIM translation stage offset	0	0.00754346686406393			
[s] Observation start time (MET)	213436345.184000	213435233.9258			
Observation start date	2004-10-06T07:51:21	2004-10-06T07:33:53			
[s] Observation end time (MET)	213481345.184000	213482117.94039			
Observation end date	2004-10-06T20:21:21	2004-10-06T20:35:17			
Read mode	TIMED	TIMED			

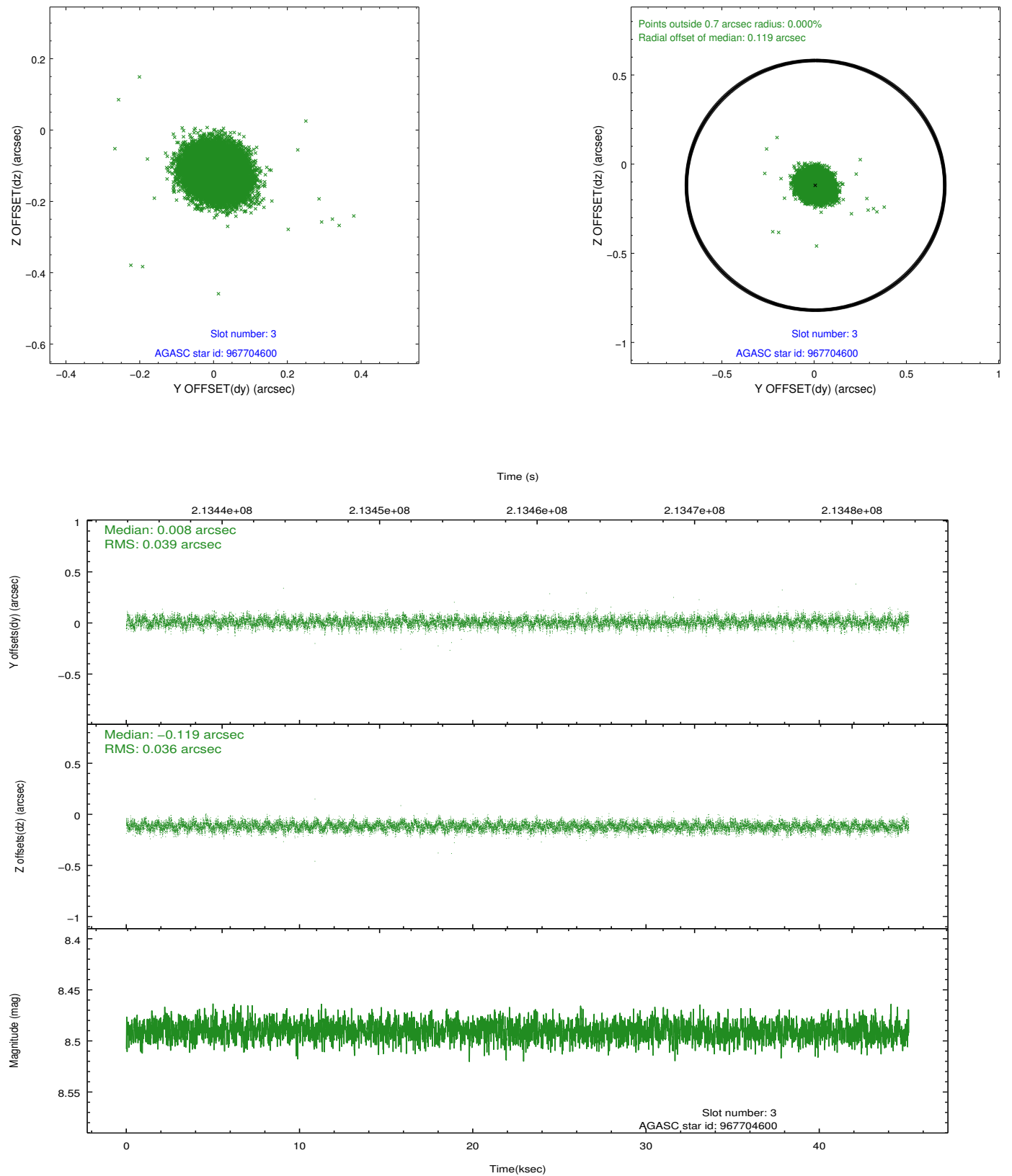
2.3 Aspect

Slot Statistics

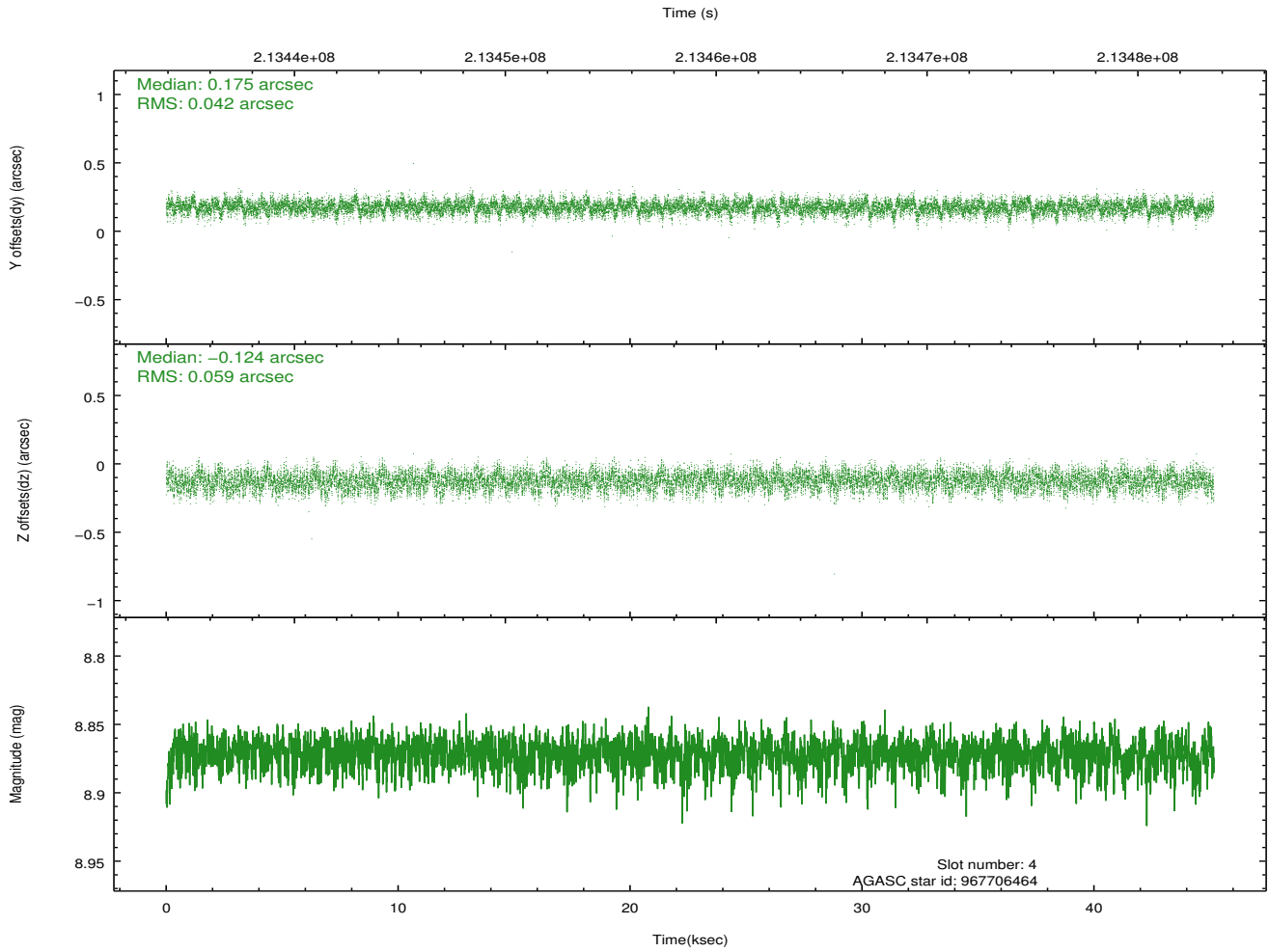
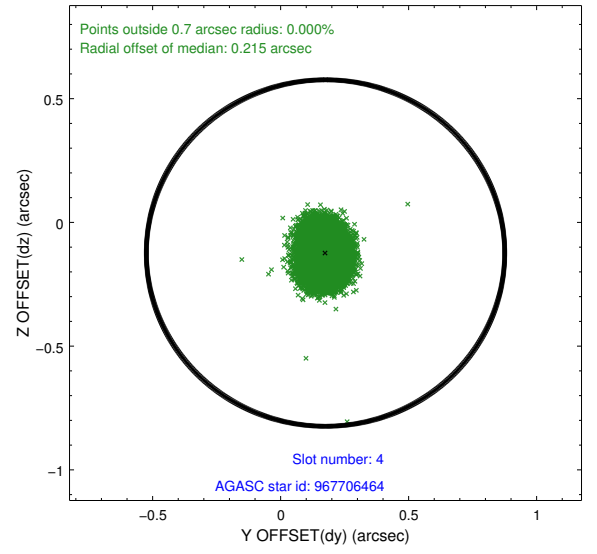
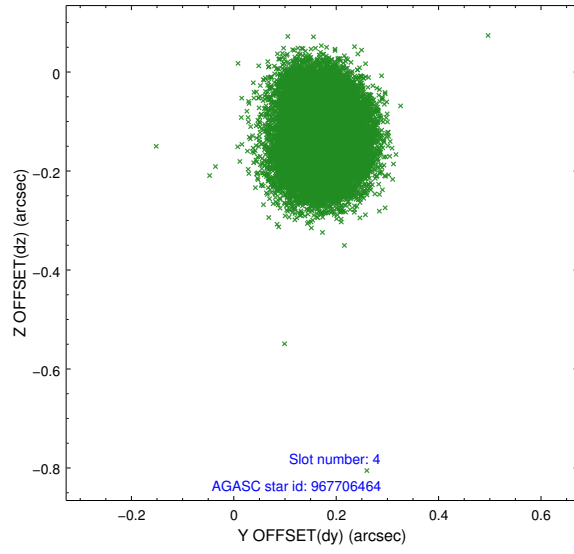
slot	status	id	mag	n_pts	med_dy	med_dz	dr1	dr2	ra	dec	mean_y	mean_z
0	FID	ACIS-S-1	7.18	11015	0.017	-0.075	0.010	0.035	0.000000	0.000000	935.67	-1728.61
1	FID	ACIS-S-2	7.10	11014	-0.070	0.007	0.008	0.034	0.000000	0.000000	-760.32	-1733.04
2	FID	ACIS-S-4	7.20	11016	0.026	0.075	0.011	0.026	0.000000	0.000000	2152.97	175.68
3	GUIDE	967704600	8.49	22016	0.008	-0.119	0.056	0.091	262.063091	-34.610970	-1835.16	236.73
4	GUIDE	967706464	8.87	22028	0.175	-0.124	0.076	0.125	261.477528	-34.851379	-746.44	-1364.92
5	GUIDE	967707112	9.42	22009	0.075	0.124	0.088	0.140	262.317974	-34.973313	-638.91	1152.58
6	GUIDE	967708192	8.86	22016	-0.175	-0.056	0.068	0.108	261.540547	-34.557389	-1820.65	-1323.85
7	GUIDE	967705352	7.66	22027	-0.085	0.175	0.059	0.094	262.627740	-34.539041	-2305.77	1864.06

2.4 Star Slots

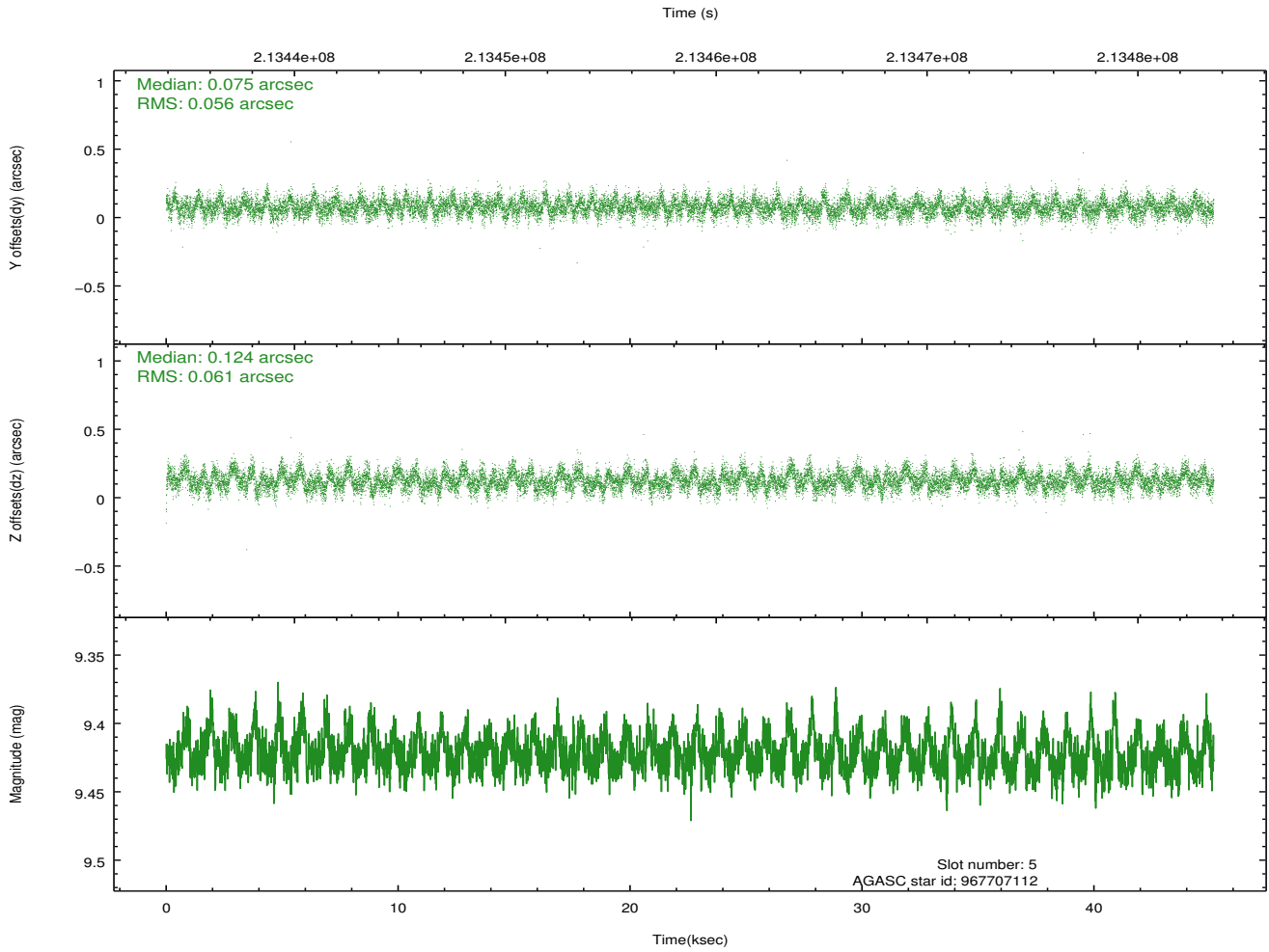
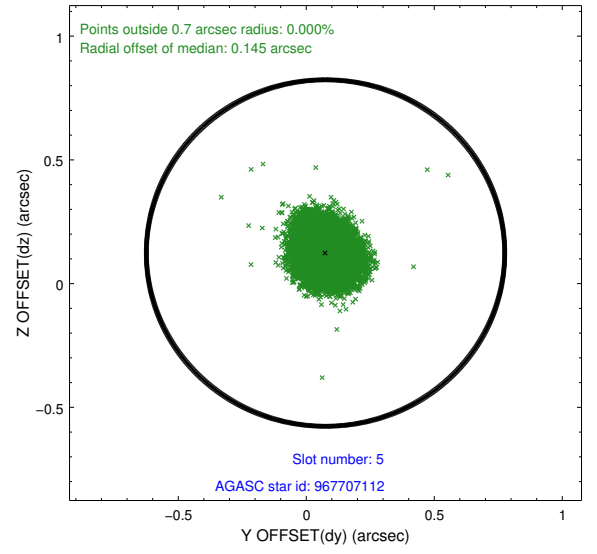
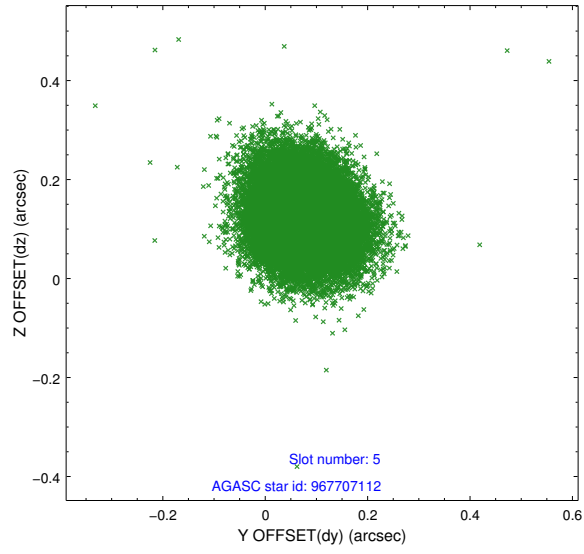
2.4.1 Slot 3



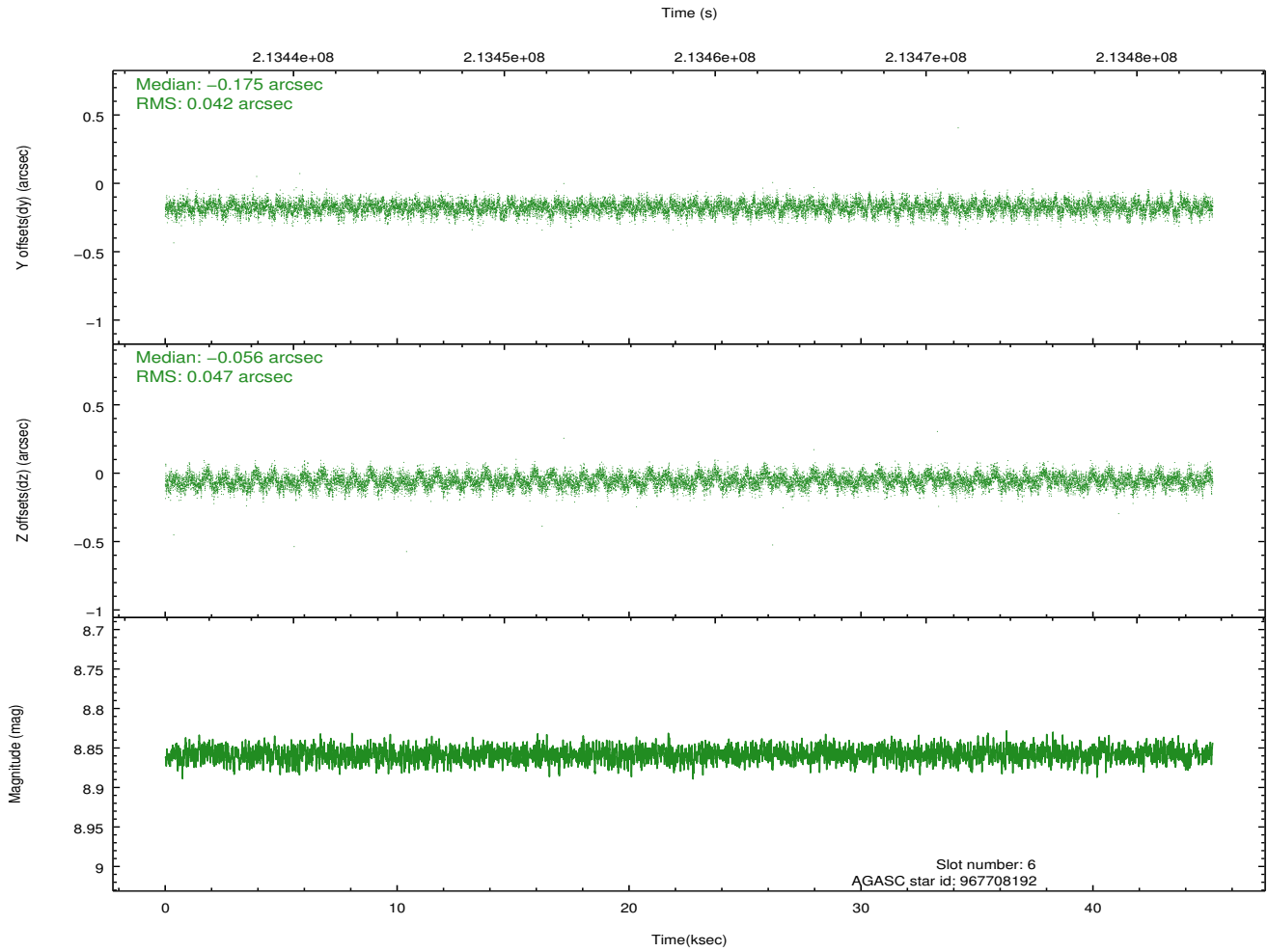
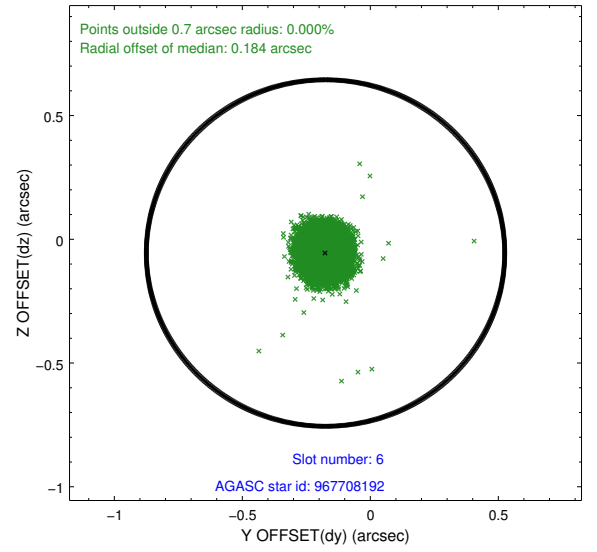
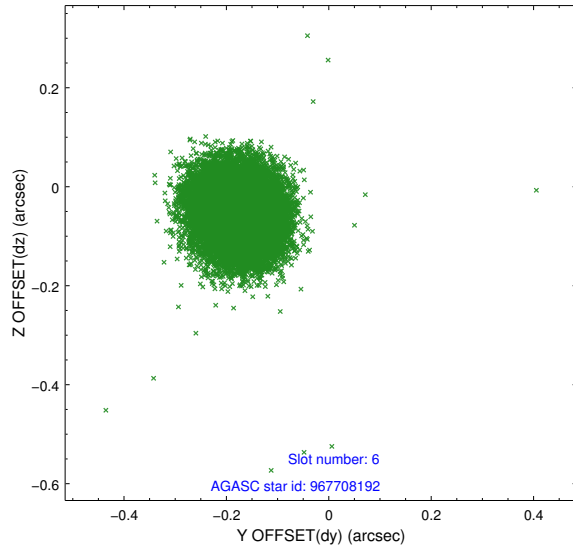
2.4.2 Slot 4



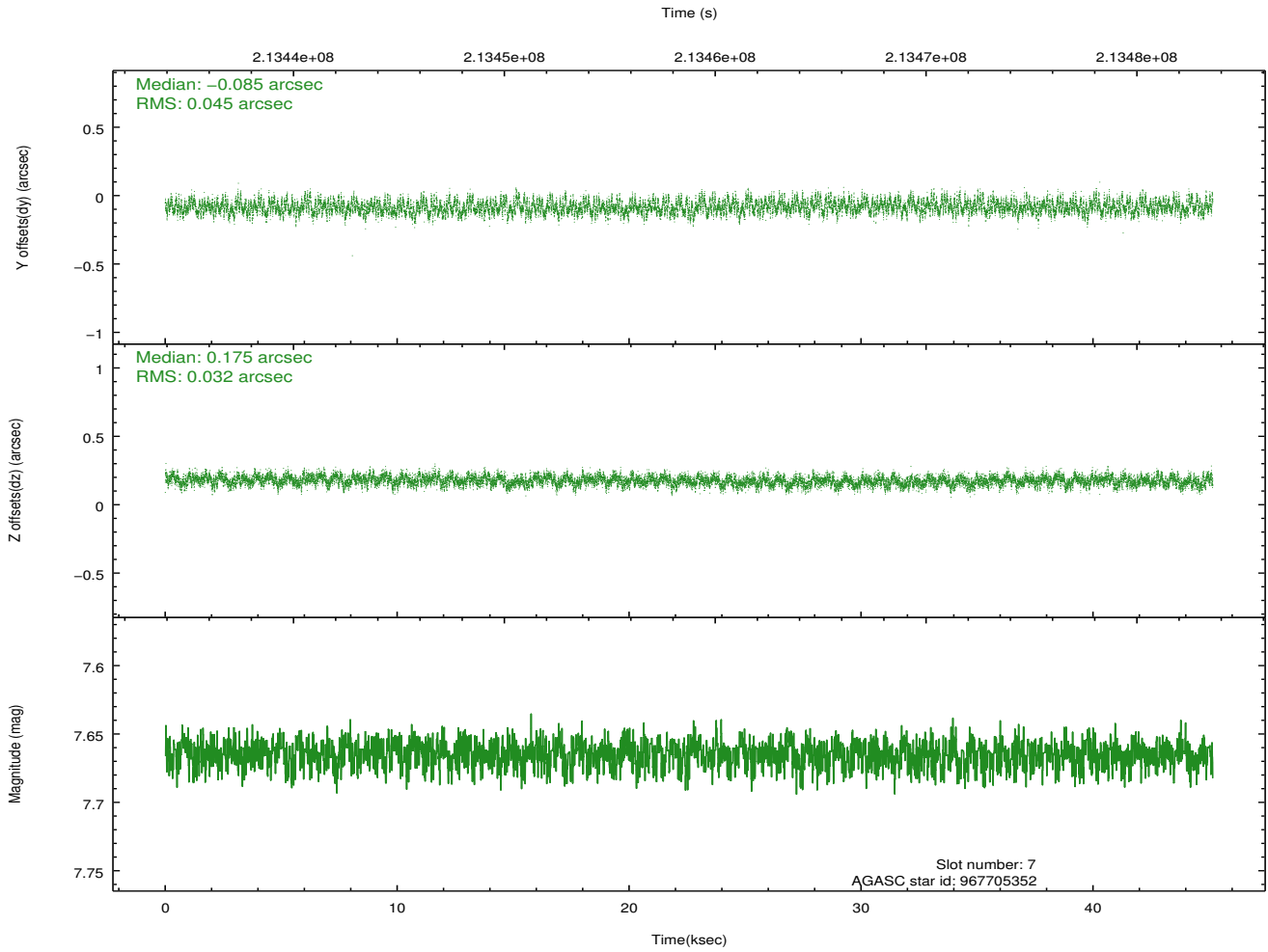
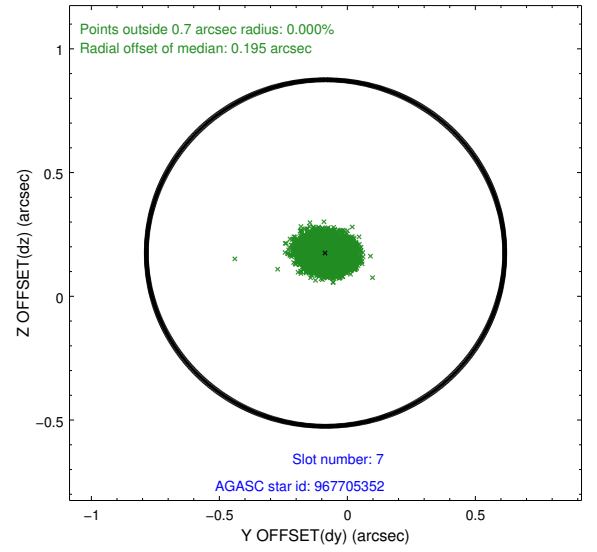
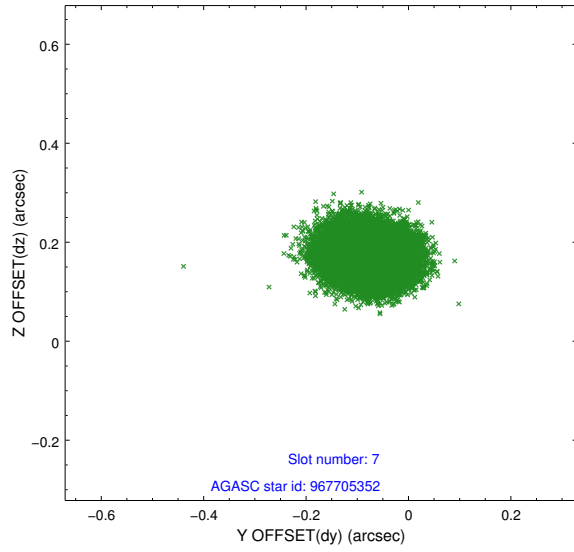
2.4.3 Slot 5



2.4.4 Slot 6

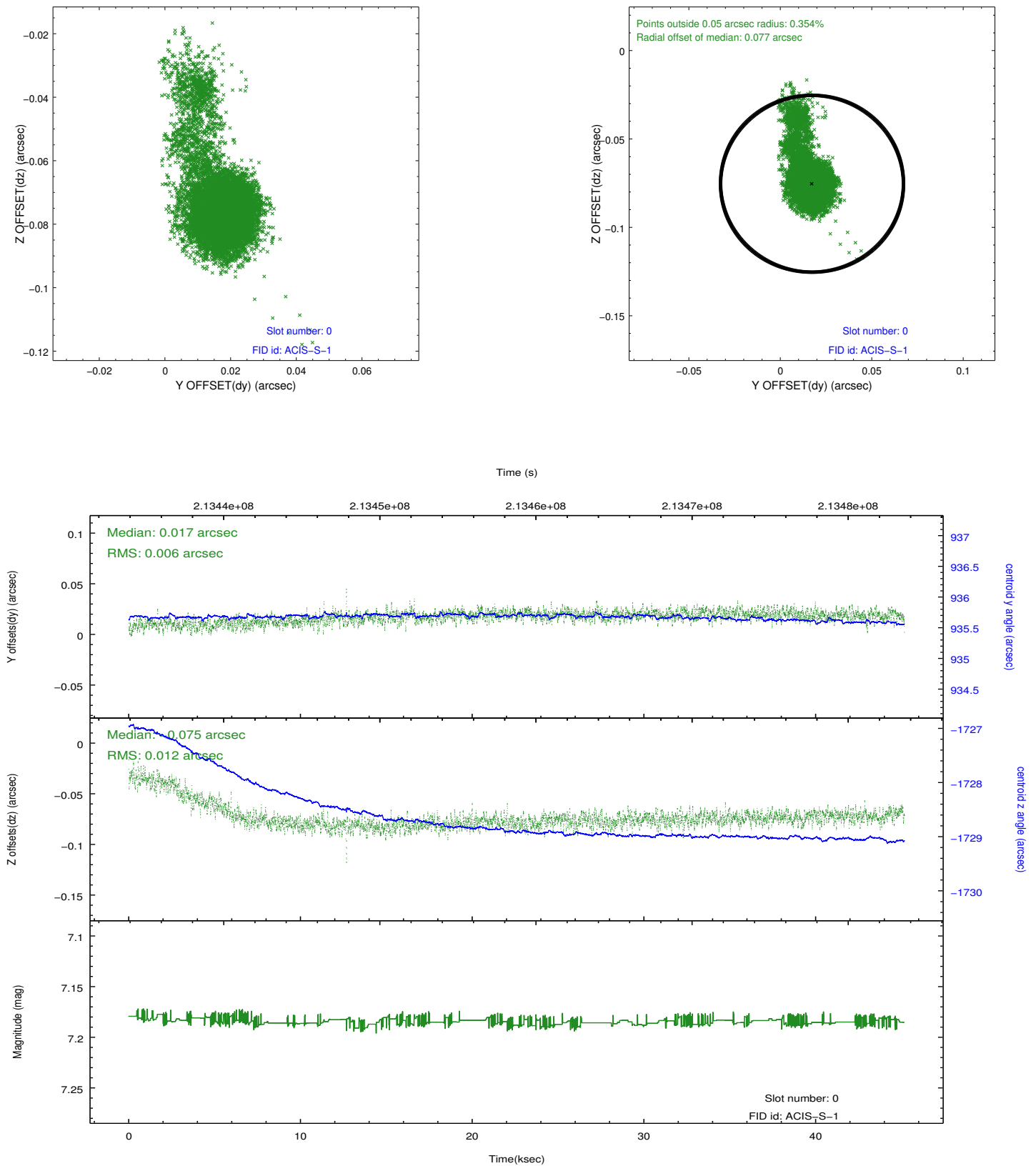


2.4.5 Slot 7

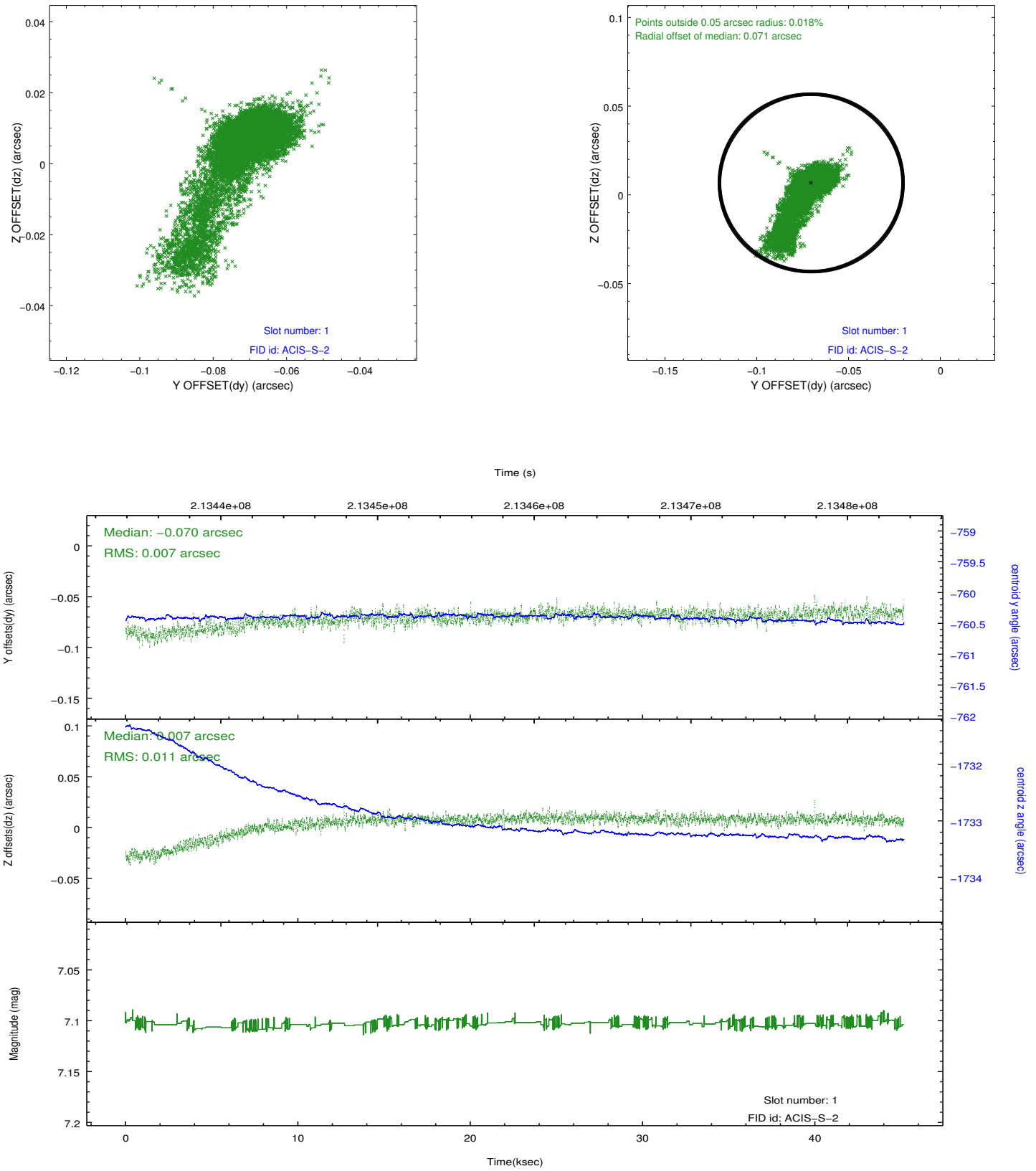


2.5 FID Slots

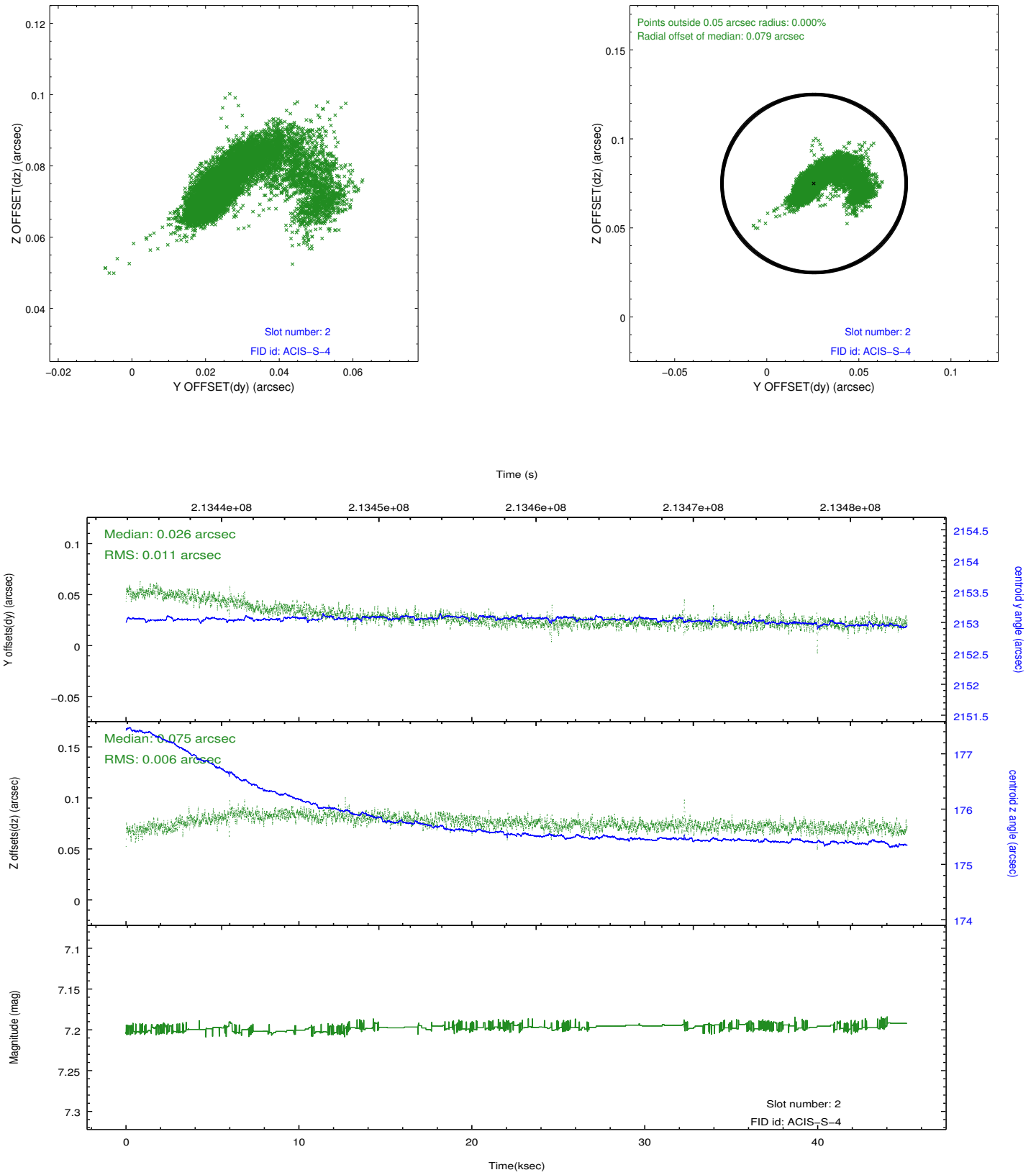
2.5.1 Slot 0



2.5.2 Slot 1



2.5.3 Slot 2



A Summary

A.1 Status

V&V Scientist	Jen Lauer
V&V Date (YYYY-MM-DD)	2013.01.03
V&V Edition	1
V&V Disposition and Status	OK
V&V Charge Time	45.155

A.2 Comments