

V&V Reference Report

L2 ASCDS Version : 7.6.7.2

Observation 4592 - L2 Version 001
Chandra X-Ray Center

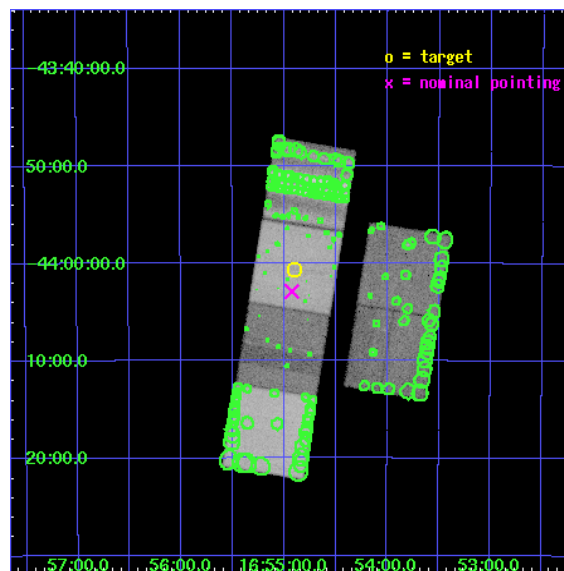
L2 Processing Date : Apr 26 2006

Contents

1	Front	2
2	OBI	3
2.1	OBI	3
2.1.1	Images	3
2.1.2	Bias	3
2.1.3	Parameters	4
2.1.4	Events	4
2.2	Compared Parameters	5
2.3	Aspect	6
2.4	Star Slots	9
2.4.1	Slot 3	9
2.4.2	Slot 4	10
2.4.3	Slot 5	11
2.4.4	Slot 6	12
2.4.5	Slot 7	13
2.5	FID Slots	14
2.5.1	Slot 0	14
2.5.2	Slot 1	15
2.5.3	Slot 2	16
3	Point Sources	17
A	Summary	18
A.1	Status	18
A.2	Comments	18

1 Front

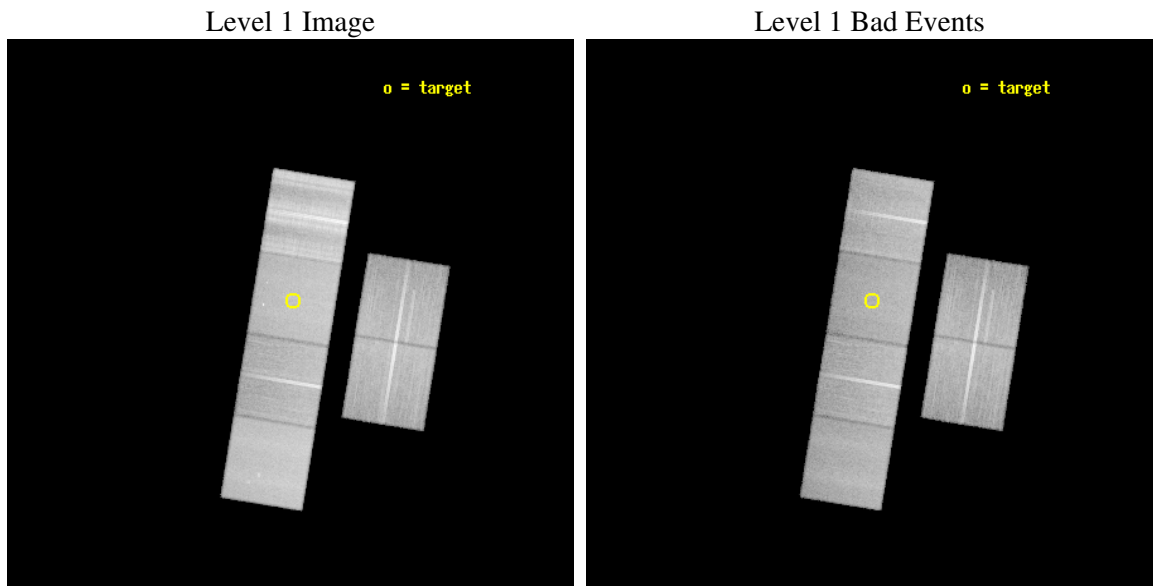
seq_num	500417
obs_id	4592
title	A Chandra Search for Crab-like Supernova Remnants
observer	Dr. Stephen Murray
object	G341.9-0.3
dtcycle	0
cycle	P
ra_targ	253.725
dec_targ	-44.011111
ra_nom	253.73094542834
dec_nom	-44.048240312864
roll_nom	279.27698319119
revision	2
ontime	41145.599846721
livetime	40624.589486556
ontime2	41139.117985725
ontime3	41142.358965993
ontime5	41145.599846721
ontime6	41142.358866453
ontime7	41145.599846721
ontime8	41142.358866423
l2events	560582



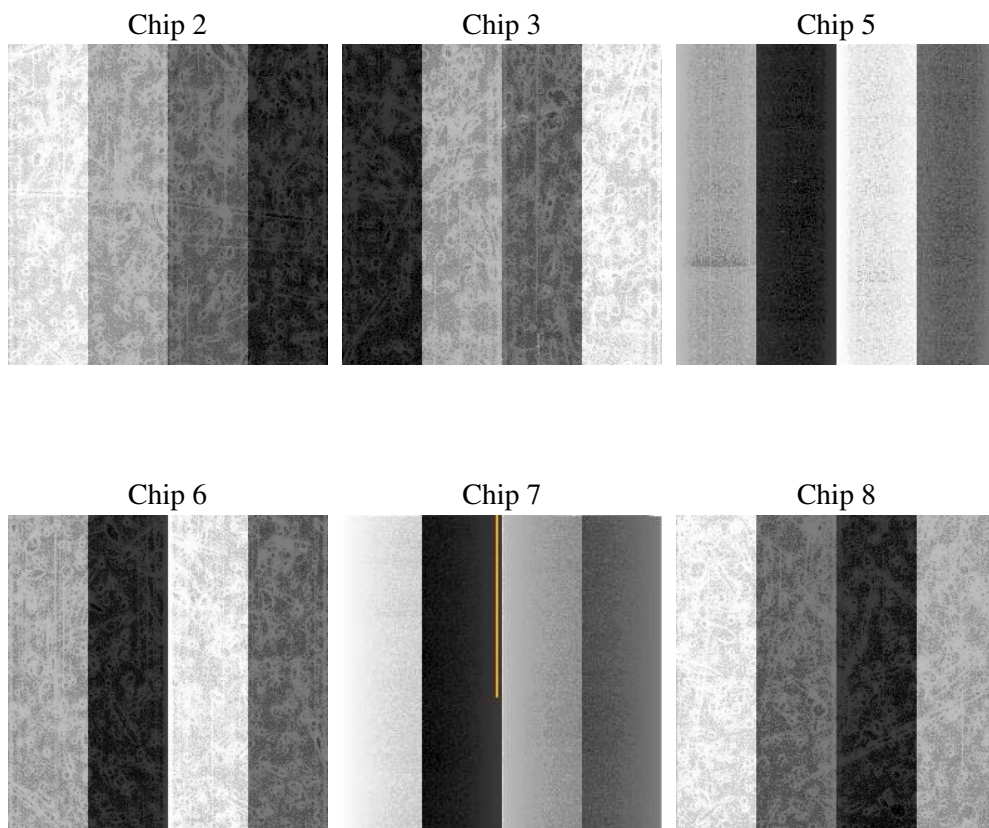
2 OBI

2.1 OBI

2.1.1 Images



2.1.2 Bias



2.1.3 Parameters

obi_num	4
ascdsver	7.6.7.2
caldsver	3.2.1
date	2006-04-26T11:50:13
revision	2

sched_exp_time	41000.000000
ontime	42259.500549108
ontime2	42253.018648297
ontime3	42259.500668555
ontime5	42262.741549283
ontime6	42259.500549138
ontime7	42259.500549108
ontime8	42259.500568986
l1events	2376424

2.1.4 Events

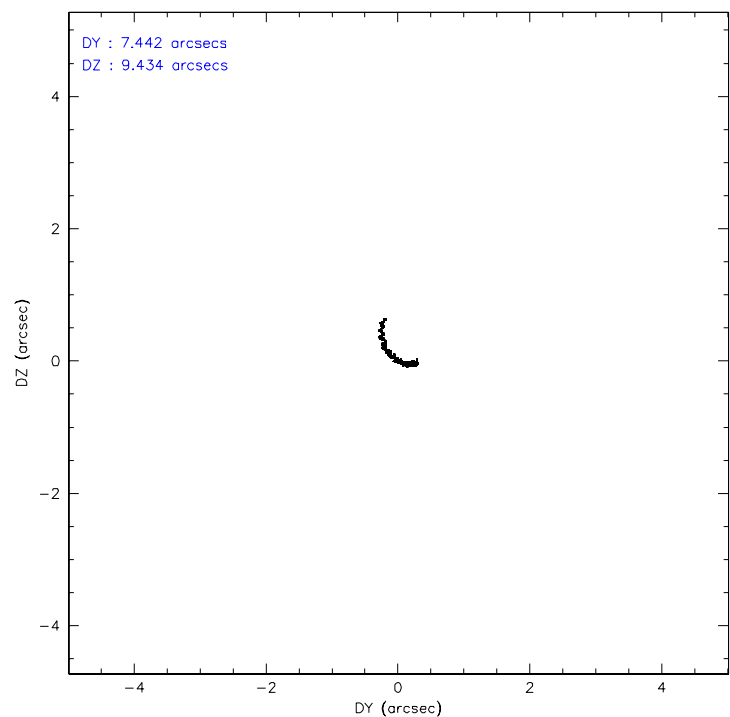
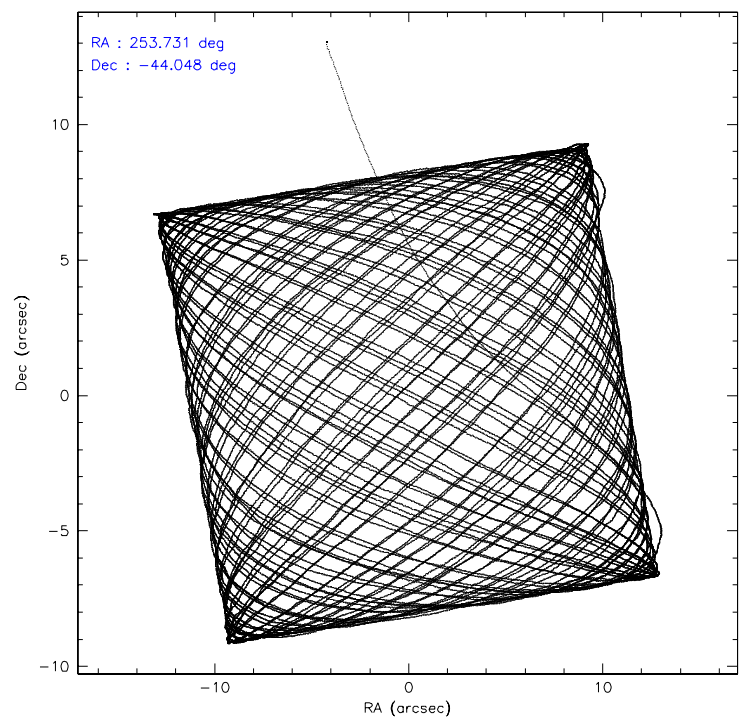
	ccd 2	ccd 3	ccd 5	ccd 6	ccd 7	ccd 8
level 1 events	334335	315057	443174	331675	406529	545654
rejected events	285582	268940	257421	283079	250957	322922
rejected %	85%	85%	58%	85%	61%	59%

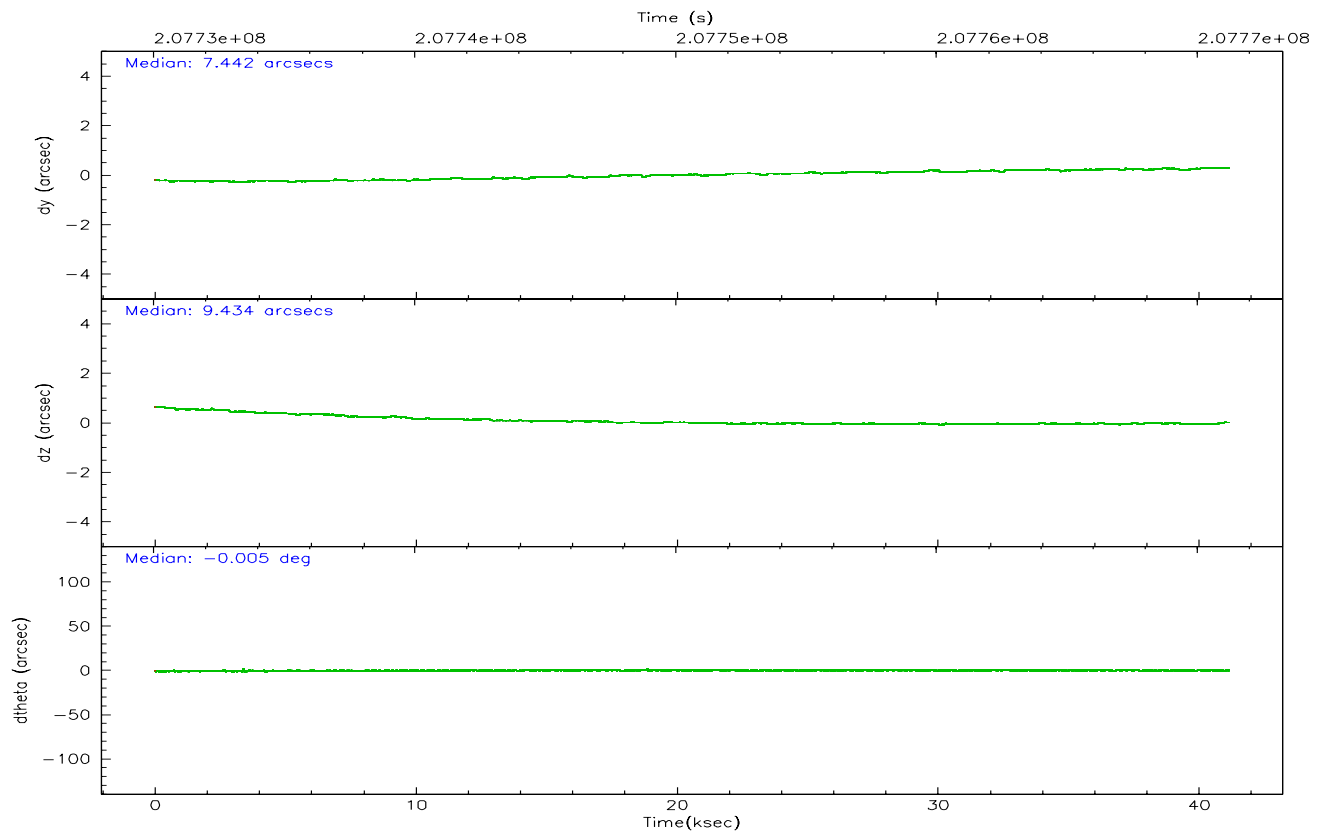
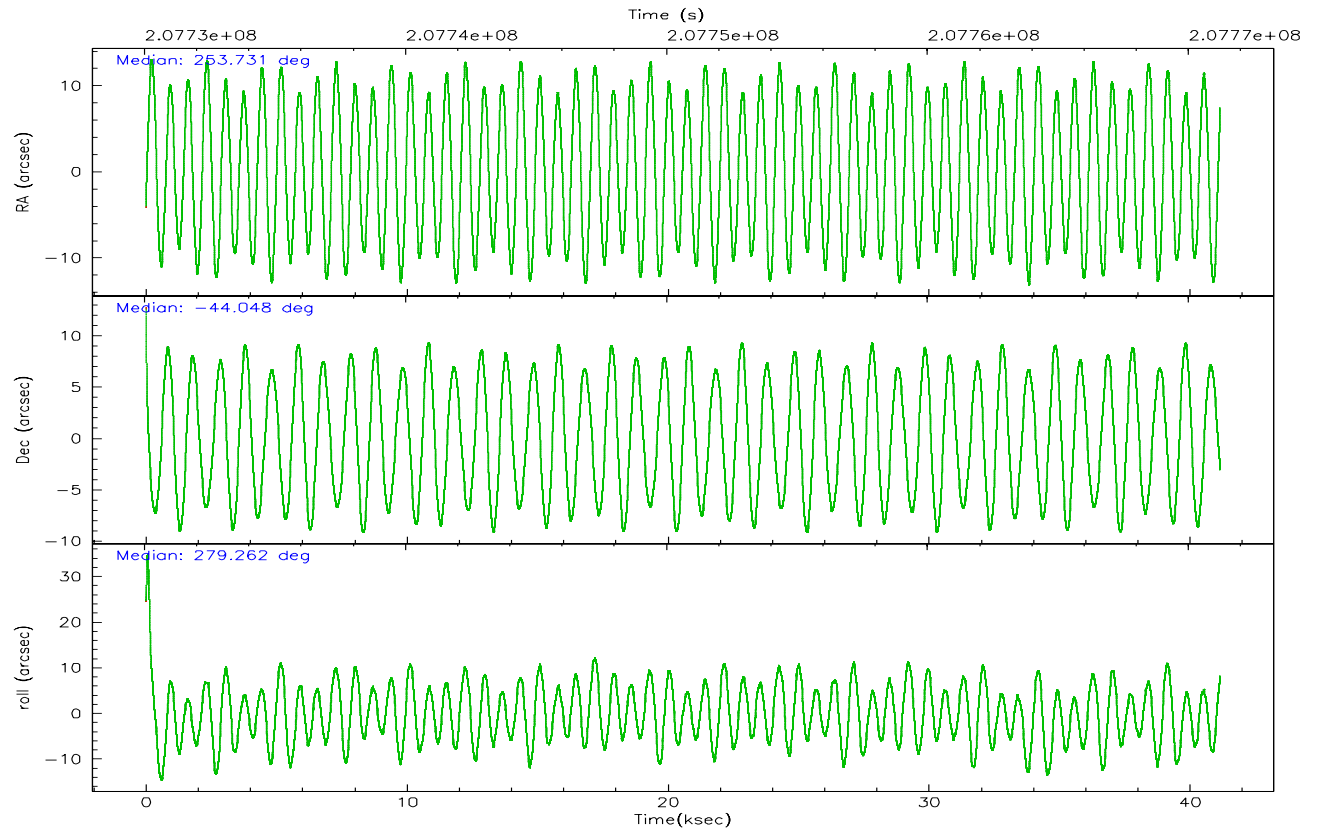
	ccd 2	ccd 3	ccd 5	ccd 6	ccd 7	ccd 8
grade 0 events	23082	19903	9660	20674	10421	82995
	6%	6%	2%	6%	2%	15%
grade 1 events	231	179	429	200	286	748
	0%	0%	0%	0%	0%	0%
grade 2 events	10828	11251	60826	12549	40614	31982
	3%	3%	13%	3%	9%	5%
grade 3 events	3387	3517	5382	3705	8453	38371
	1%	1%	1%	1%	2%	7%
grade 4 events	4090	3492	5245	3448	8348	35271
	1%	1%	1%	1%	2%	6%
grade 5 events	11575	12799	21316	13352	26197	19179
	3%	4%	4%	4%	6%	3%
grade 6 events	8715	9268	110130	9497	91982	39912
	2%	2%	24%	2%	22%	7%
grade 7 events	272427	254648	230186	268250	220228	297196
	81%	80%	51%	80%	54%	54%

2.2 Compared Parameters

Parameter	Planned	Actual	Parameter	Planned	Actual
Instrument	ACIS	ACIS	Obspar format version number	6	6
Detector	ACIS-235678	ACIS-235678	Obspar file type	PREDICTED	ACTUAL
Grating	NONE	NONE	Obspar update status	NONE	UPDATED
Data mode	VFAINT	VFAINT	On-chip summing requested	N	N
Observation mode	POINTING	POINTING	Subarray requested	NONE	NONE
Pointing RA	253.706577	253.7309454283376	Alternating exposures requested	N	N
Pointing Dec	-44.027415	-44.04824031286385	Primary exposure time	0.000000	3.2
Pointing Roll	279.103415	279.2769831911902			
SIM focus pos (mm)	-0.684267	-0.6828225247311905			
SIM defocus (mm)	0	0.001444936568705701			
SIM translation stage pos (mm)	-190.132523	-190.1400660498719			
SIM translation stage offset (mm)	0	0.00754346686406393			
Observation start time	207730215.184000	207728604.59639			
Observation start date	2004-08-01T06:49:11	2004-08-01T06:23:24			
Observation end time	207771215.184000	207772716.49835			
Observation end date	2004-08-01T18:12:31	2004-08-01T18:38:36			
Read mode	TIMED	TIMED			

2.3 Aspect



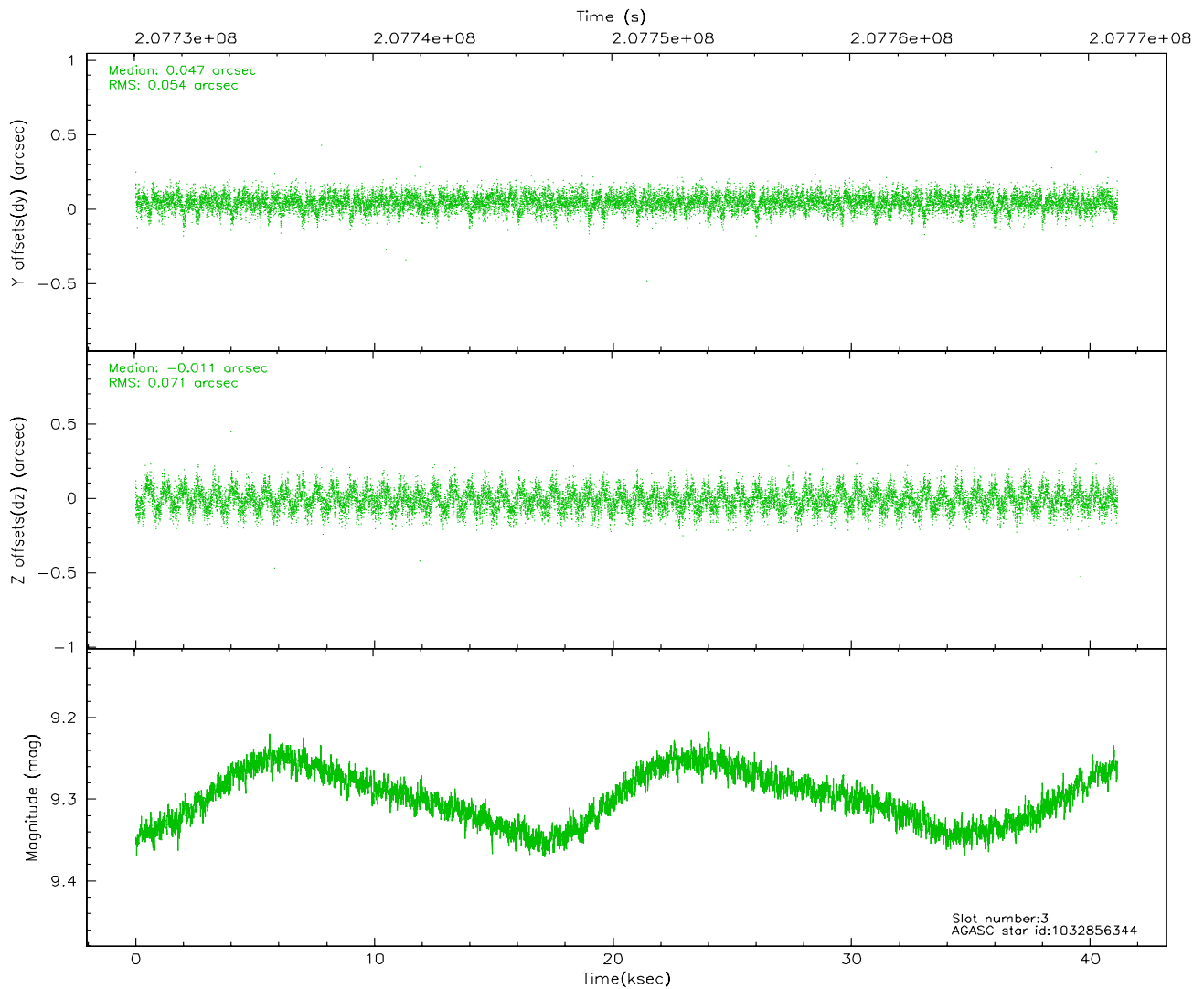
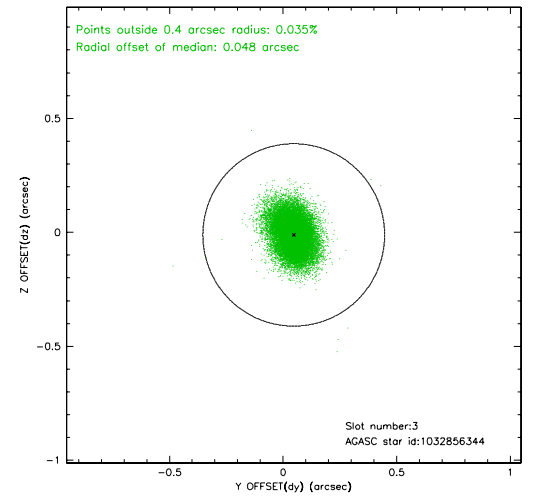
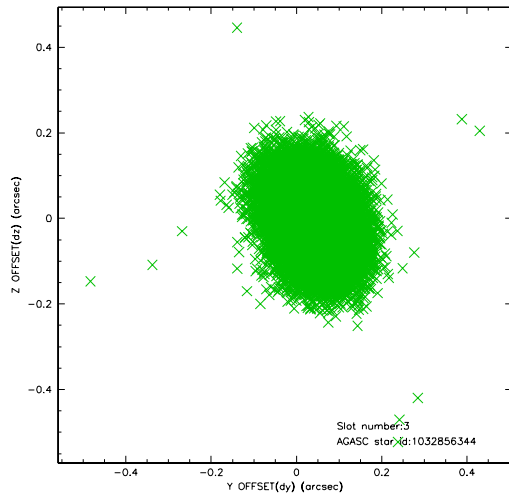


Slot Statistics

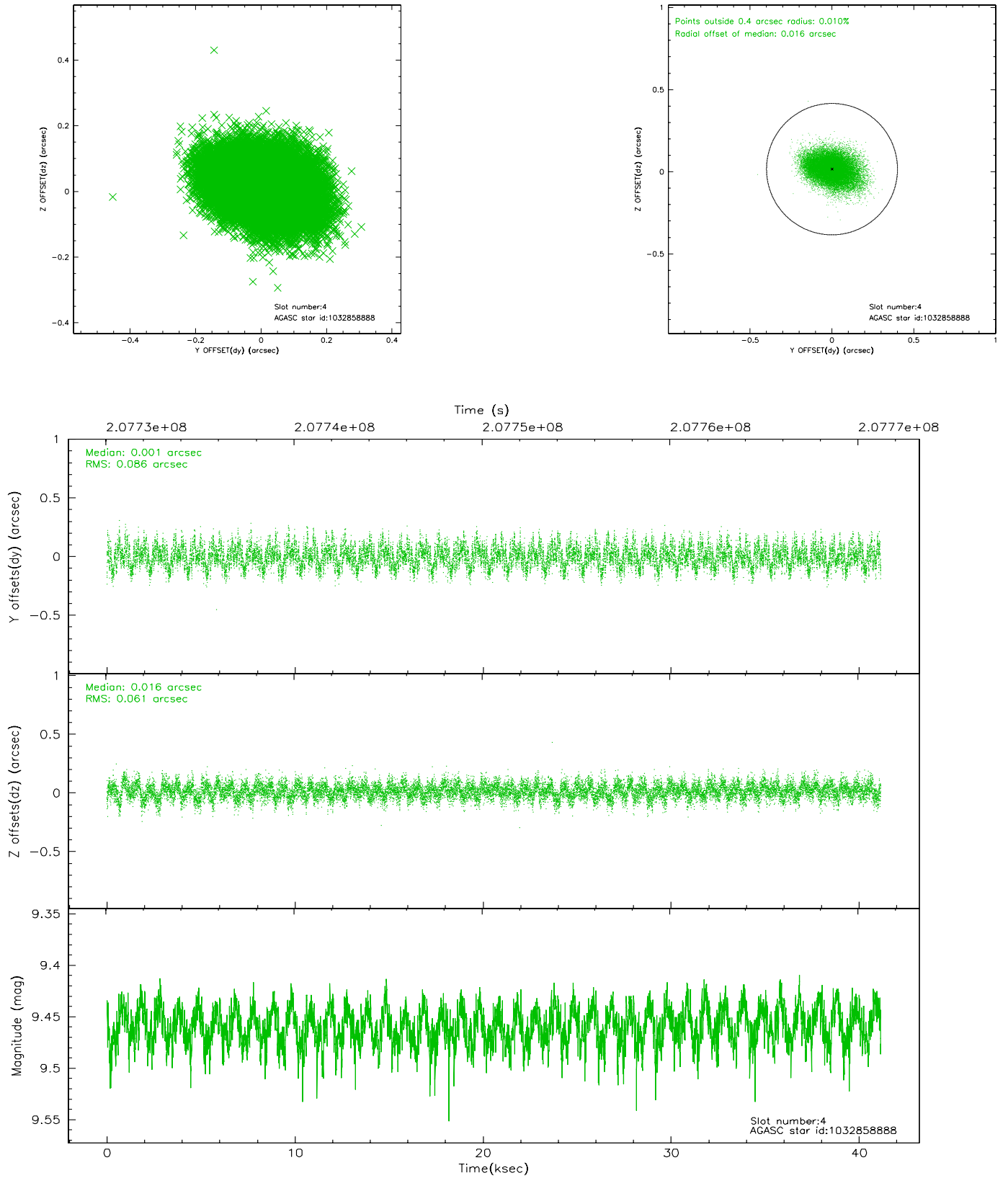
slot	status	id	mag	n_pts	med_dy	med_dz	dr1	dr2	ra	dec	mean_y	mean_z
0	FID	ACIS-S-1	7.19	10037	0.014	0.002	0.012	0.020	0.000000	0.000000	935.84	-1726.39
1	FID	ACIS-S-4	7.20	10035	0.032	-0.004	0.010	0.018	0.000000	0.000000	2153.26	177.76
2	FID	ACIS-S-5	7.23	10038	-0.073	0.014	0.015	0.024	0.000000	0.000000	-1813.11	171.36
3	GUIDE	1032856344	9.30	20065	0.047	-0.011	0.095	0.154	253.308302	-43.749430	-1149.10	-864.53
4	GUIDE	1032858888	9.46	20058	0.001	0.016	0.114	0.183	254.468617	-43.462180	-1685.57	2286.68
5	GUIDE	1032860872	9.40	20064	0.011	0.082	0.086	0.138	253.486994	-43.583026	-1669.30	-312.13
6	GUIDE	1032862008	9.01	20069	0.019	0.035	0.086	0.138	253.528180	-43.764940	-1005.69	-308.26
7	GUIDE	1032867928	8.34	20072	-0.074	-0.120	0.064	0.105	253.057857	-43.542782	-1983.56	-1396.79

2.4 Star Slots

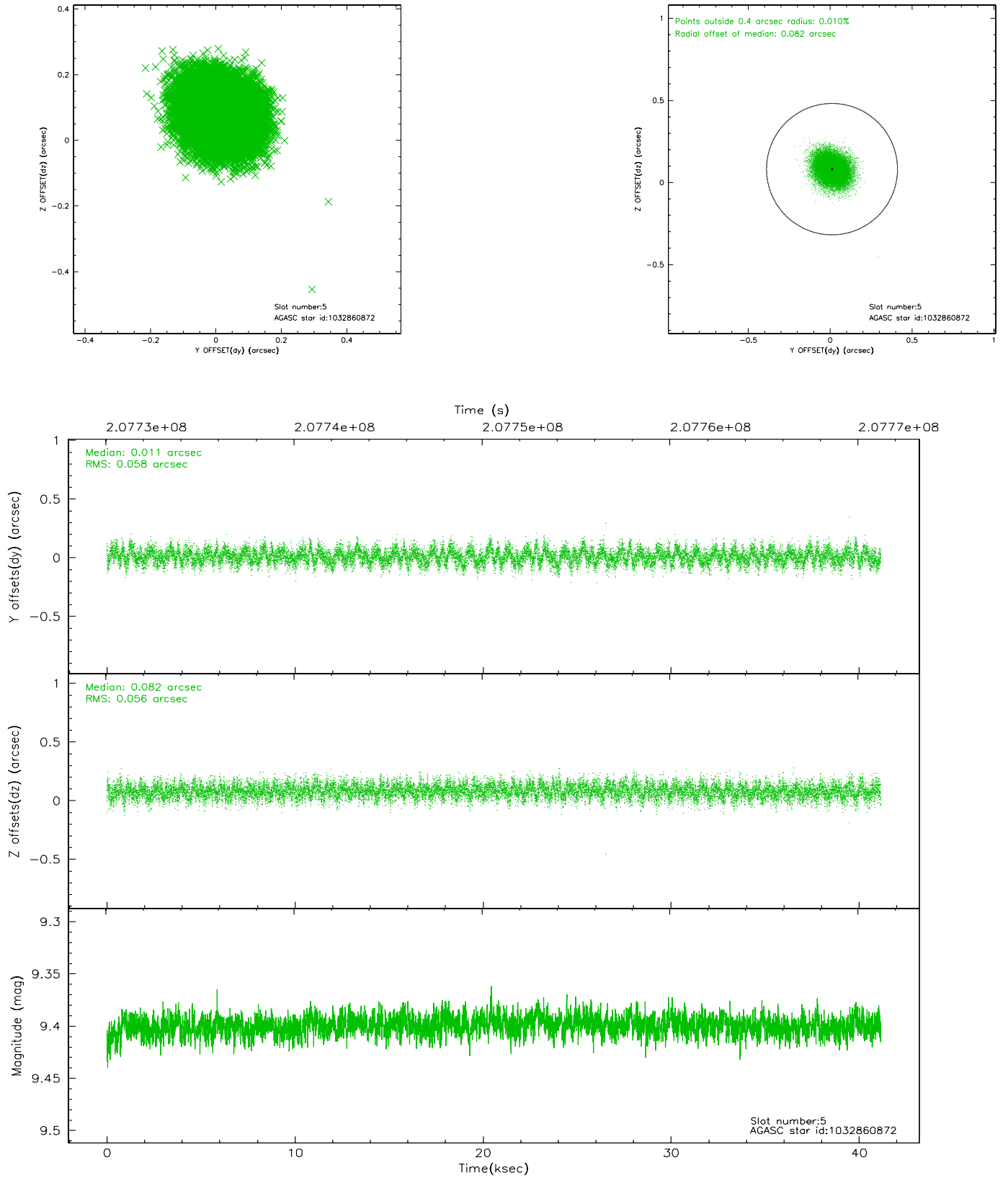
2.4.1 Slot 3



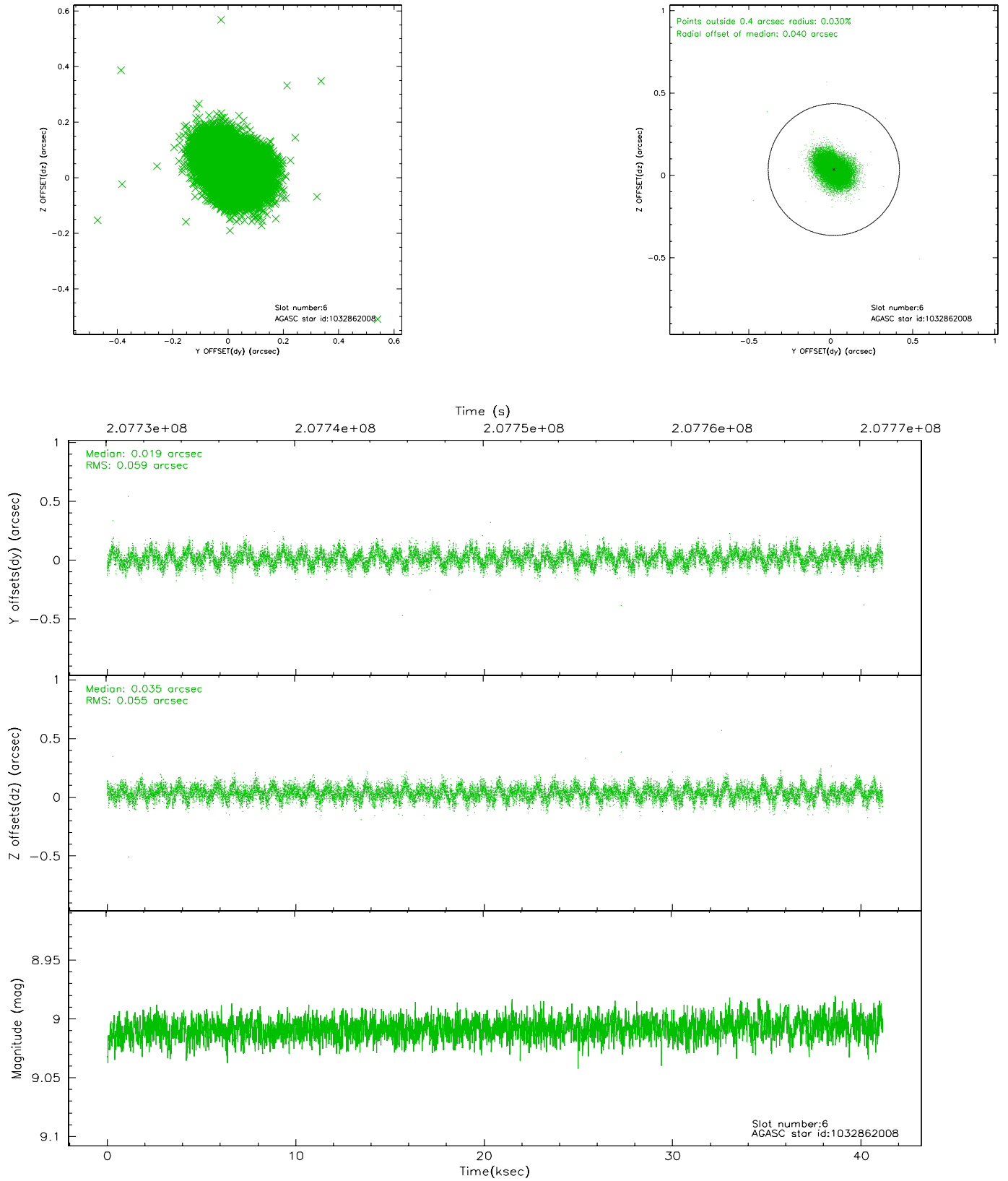
2.4.2 Slot 4



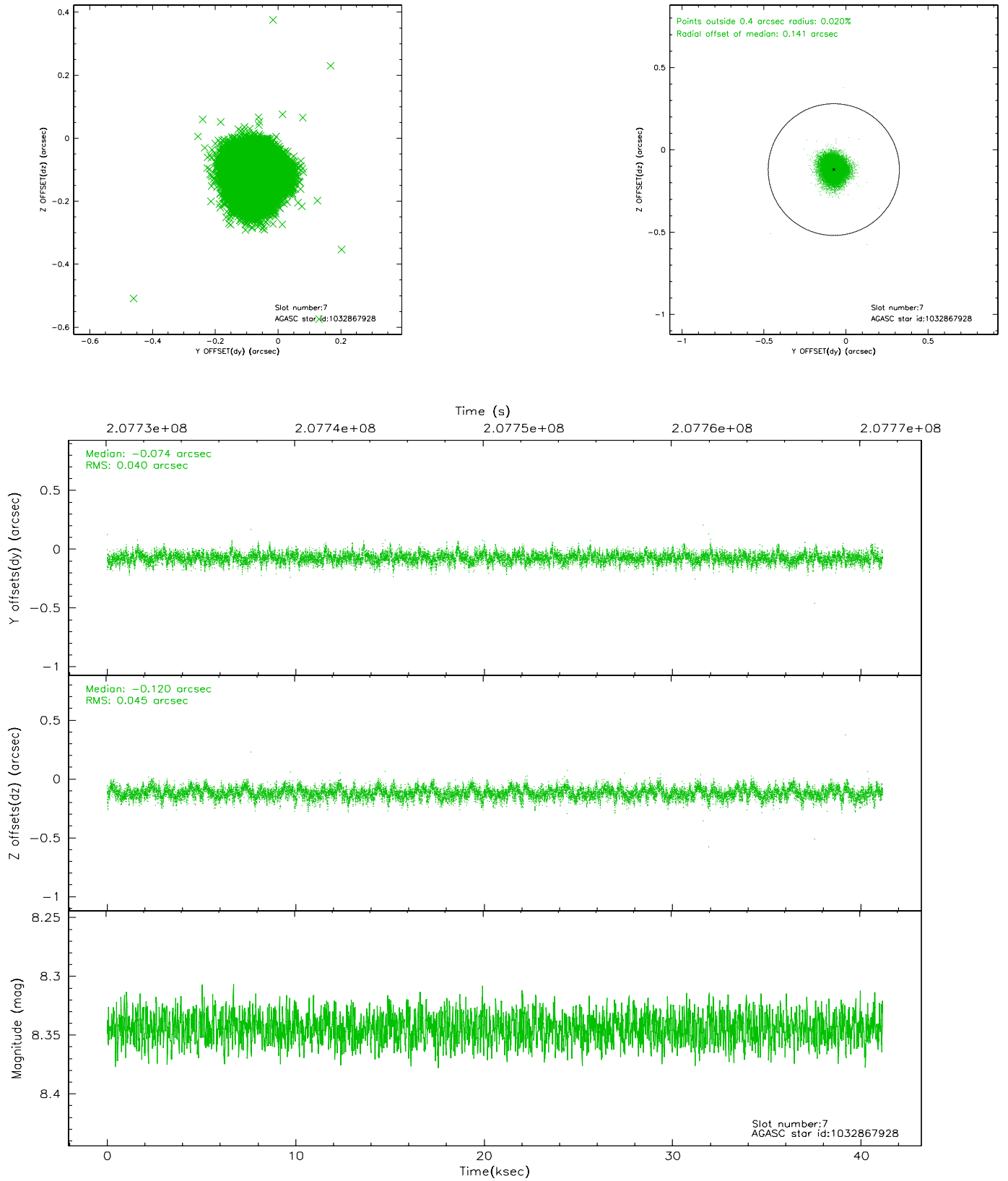
2.4.3 Slot 5



2.4.4 Slot 6

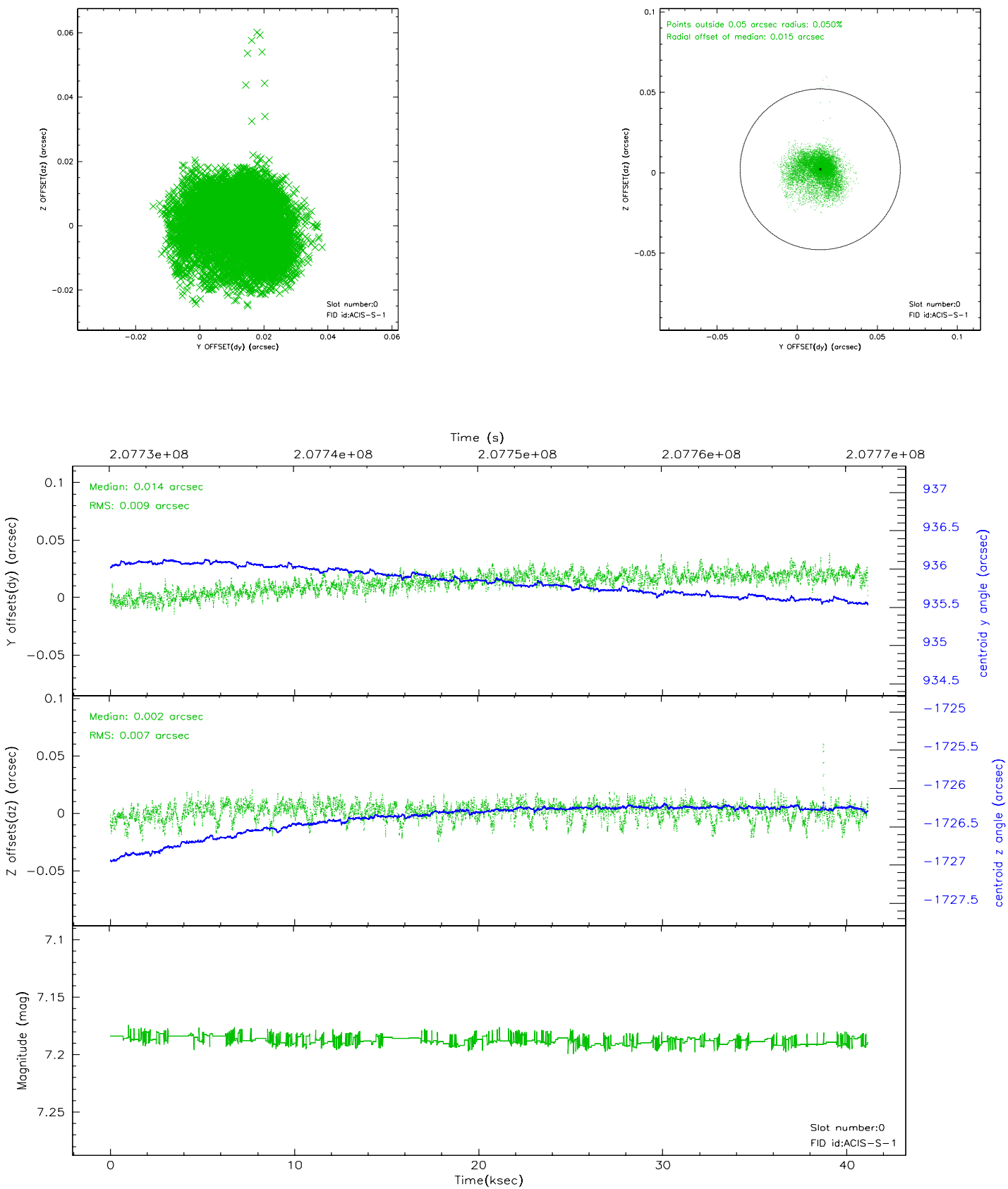


2.4.5 Slot 7

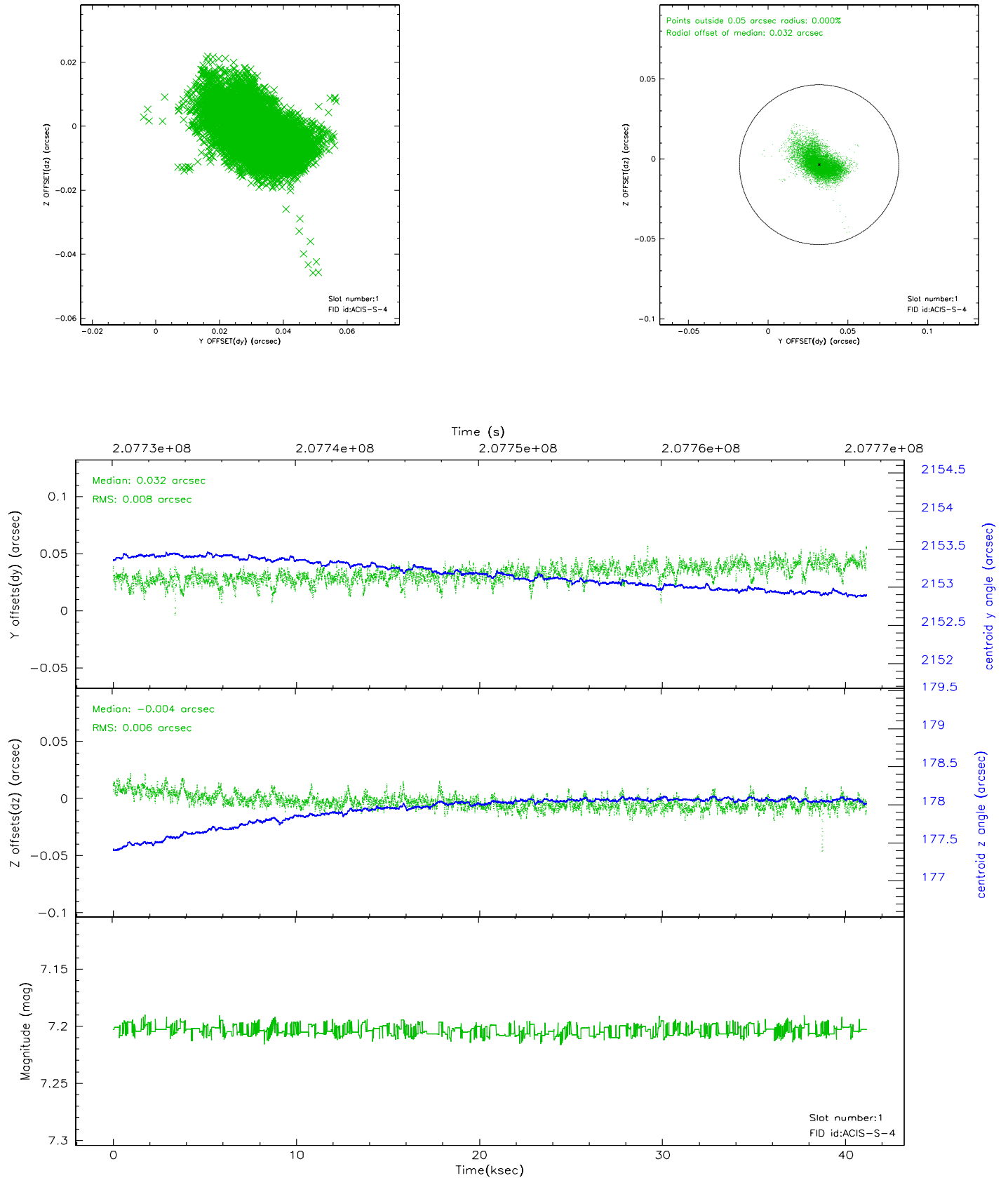


2.5 FID Slots

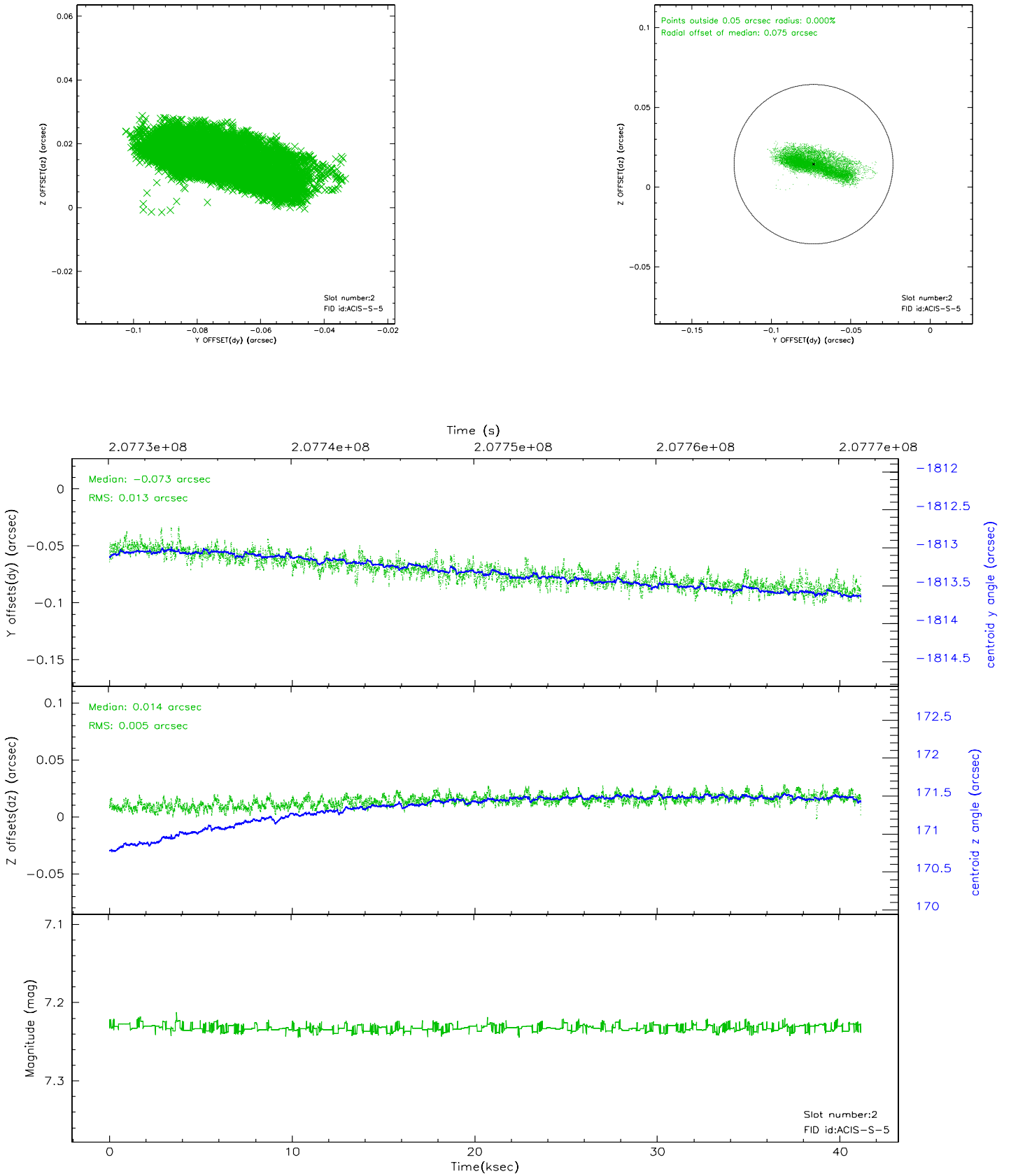
2.5.1 Slot 0



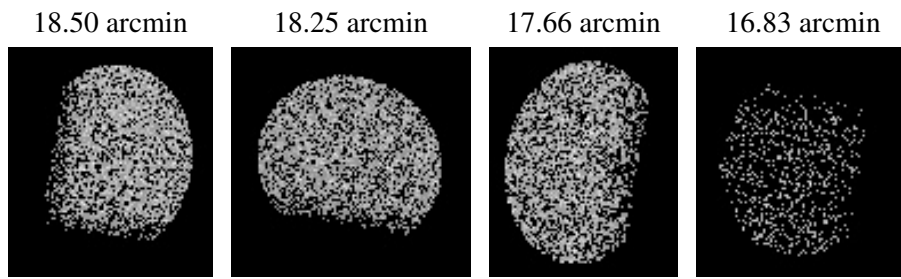
2.5.2 Slot 1



2.5.3 Slot 2



3 Point Sources



A Summary

A.1 Status

V&V Scientist	Jen Lauer
V&V Date (YYYY-MM-DD)	2006.04.26
V&V Edition	1
V&V Disposition and Status	OK
V&V Charge Time	41.145

A.2 Comments