

V&V Reference Report

L2 ASCDS Version : 7.6.8

Observation 4542 - L2 Version 001
Chandra X-Ray Center

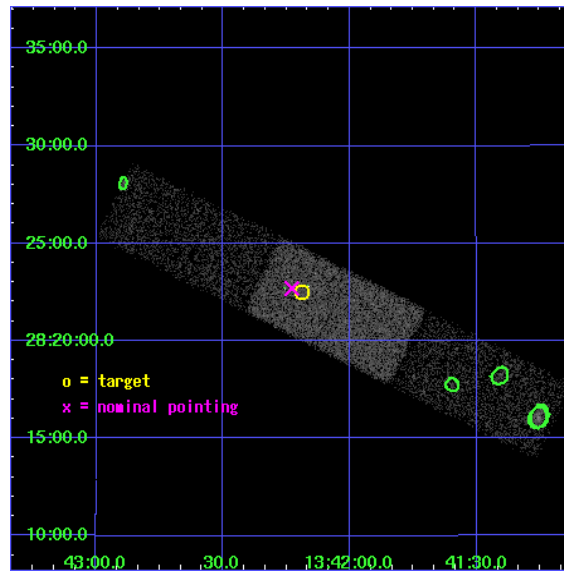
L2 Processing Date : Jun 30 2006

Contents

1	Front	2
2	OBI	3
2.1	OBI	3
2.1.1	Images	3
2.1.2	Bias	3
2.1.3	Parameters	4
2.1.4	Events	4
2.2	Compared Parameters	5
2.3	Aspect	6
2.4	Star Slots	9
2.4.1	Slot 3	9
2.4.2	Slot 4	10
2.4.3	Slot 5	11
2.4.4	Slot 6	12
2.4.5	Slot 7	13
2.5	FID Slots	14
2.5.1	Slot 0	14
2.5.2	Slot 1	15
2.5.3	Slot 2	16
3	Point Sources	17
A	Summary	18
A.1	Status	18
A.2	Comments	18

1 Front

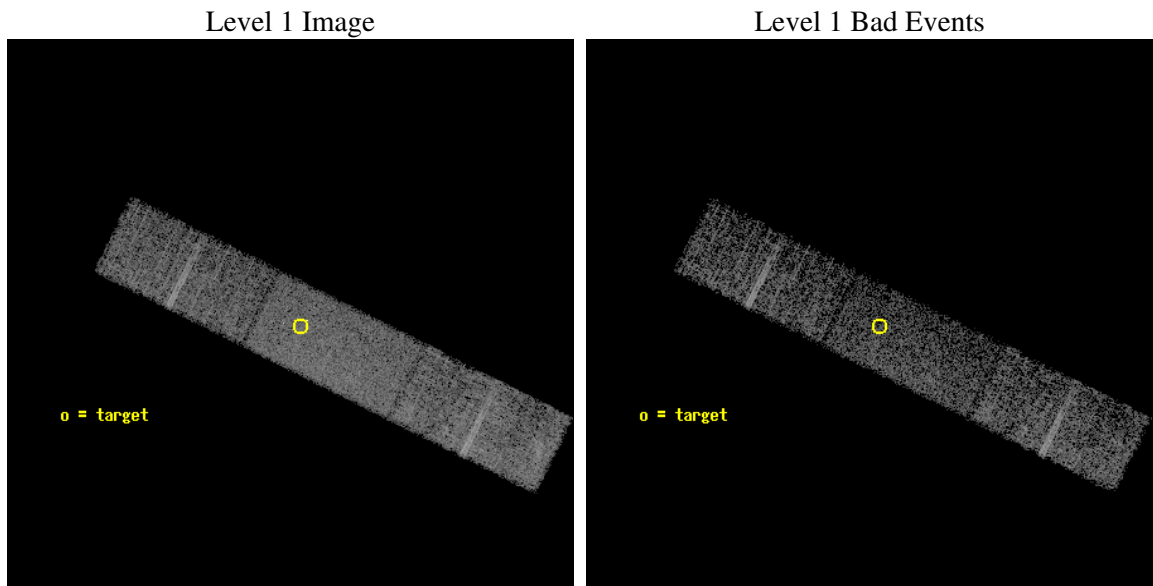
seq_num	300136
obs_id	4542
title	The Supersoft Source 1E1339.8+2837 and Globular Cluster M3
observer	Prof. Jonathan Grindlay
object	M3
dtcycle	0
cycle	P
ra_targ	205.546667
dec_targ	28.375556
ra_nom	205.55715206803
dec_nom	28.37826099088
roll_nom	26.373268975037
revision	2
ontime	10187.19996205
livetime	9932.4330542093
ontime6	10187.19996205
ontime7	10187.19996205
ontime8	10187.19996205
l2events	24534



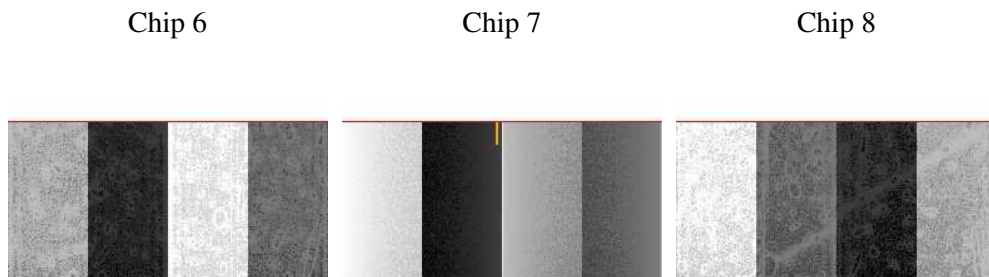
2 OBI

2.1 OBI

2.1.1 Images



2.1.2 Bias



2.1.3 Parameters

obi_num	0
ascdsver	7.6.8
caldsver	3.2.2
date	2006-06-30T10:49:07
revision	2

sched_exp_time	10000.000000
ontime	10620.680400491
ontime6	10620.680400491
ontime7	10620.680400491
ontime8	10620.680430412
l1events	121775

2.1.4 Events

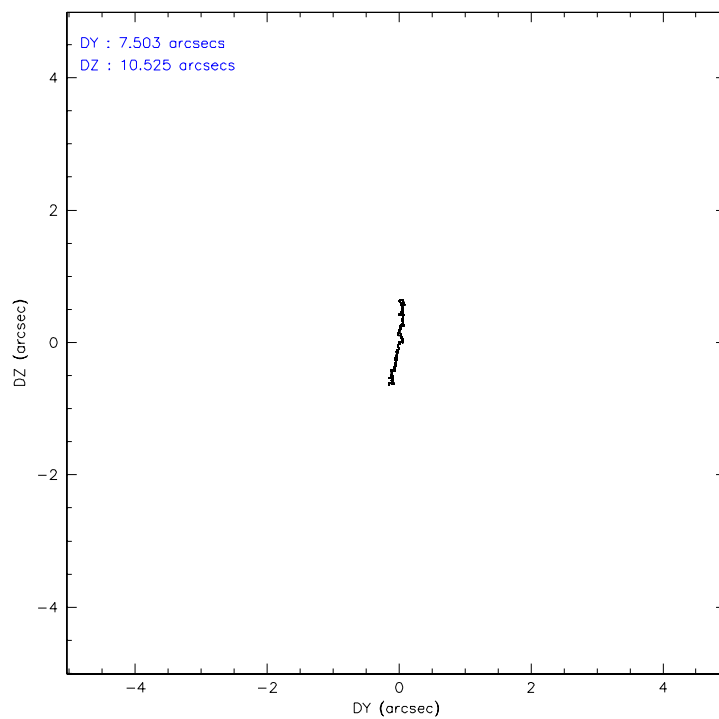
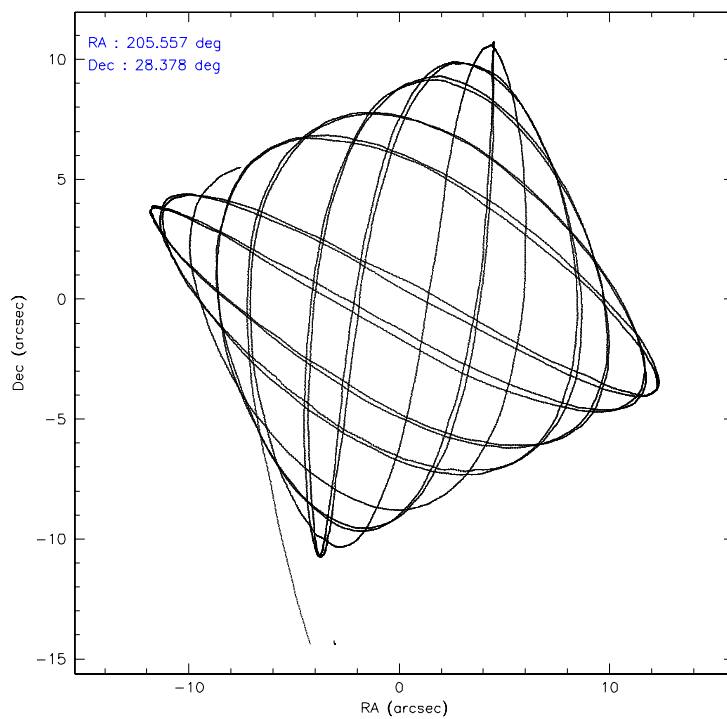
	ccd 6	ccd 7	ccd 8
level 1 events	33589	43569	44617
rejected events	29372	26427	35177
rejected %	87%	60%	78%

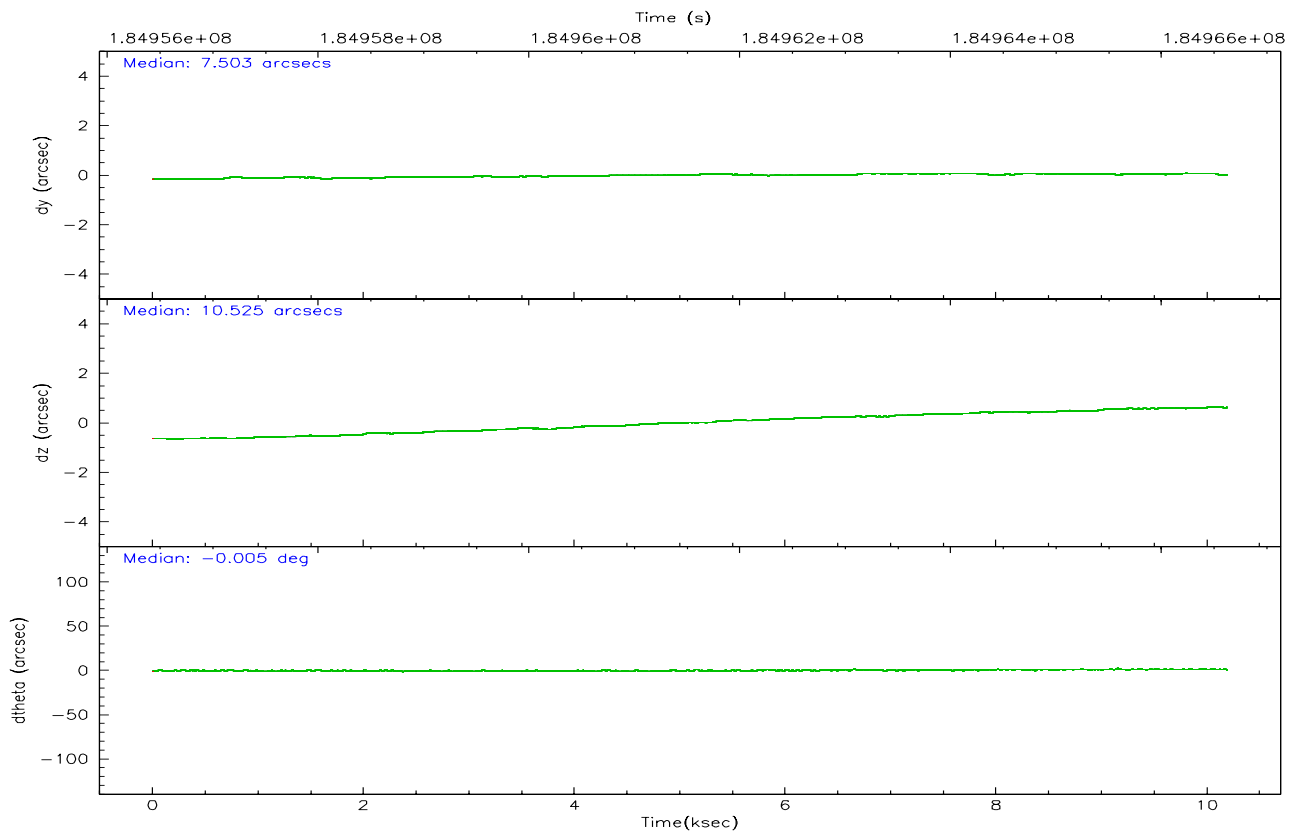
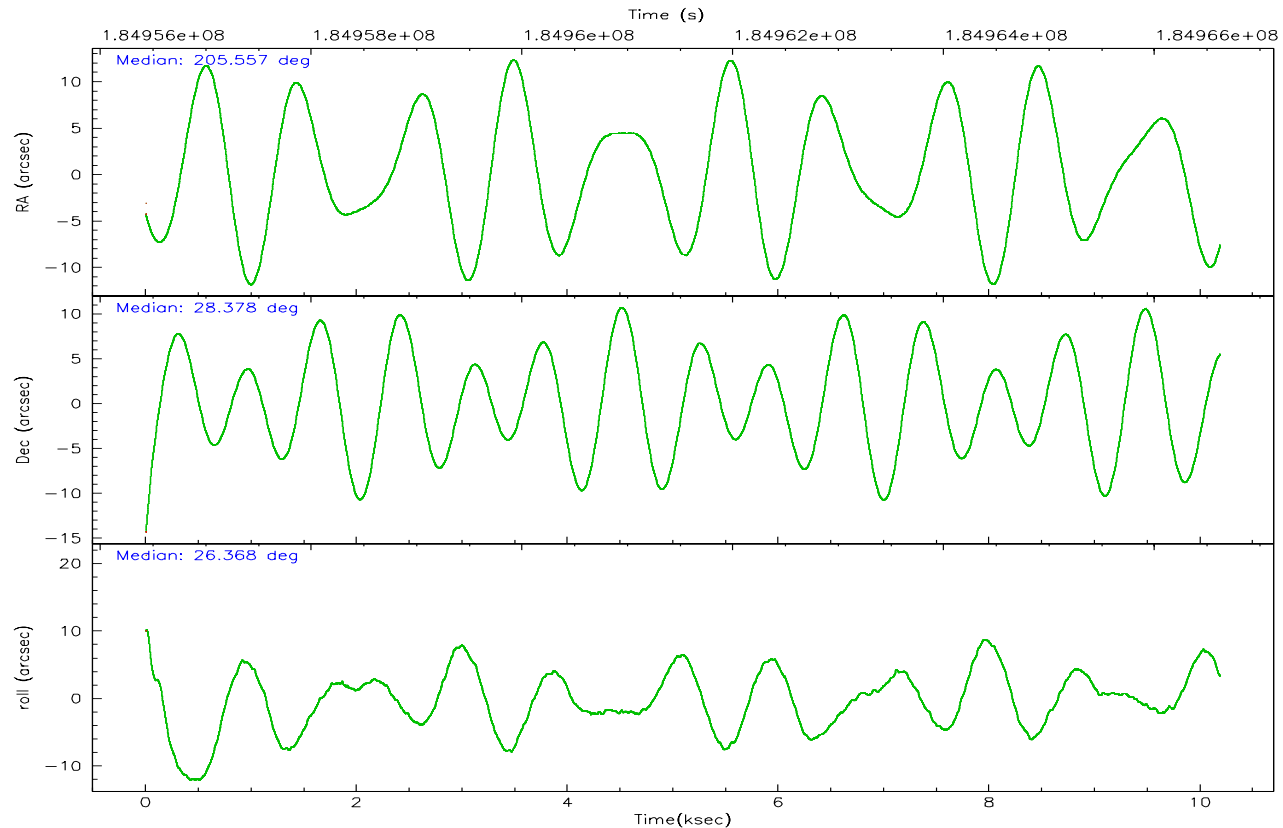
	ccd 6	ccd 7	ccd 8
grade 0 events	1735	1301	3270
	5%	2%	7%
grade 1 events	15	34	15
	0%	0%	0%
grade 2 events	809	4410	1960
	2%	10%	4%
grade 3 events	515	1074	1047
	1%	2%	2%
grade 4 events	477	1112	1069
	1%	2%	2%
grade 5 events	1390	2911	1869
	4%	6%	4%
grade 6 events	859	9983	2406
	2%	22%	5%
grade 7 events	27789	22744	32981
	82%	52%	73%

2.2 Compared Parameters

Parameter	Planned	Actual	Parameter	Planned	Actual
Instrument	ACIS	ACIS	Obspar format version number	6	6
Detector	ACIS-678	ACIS-678	Obspar file type	PREDICTED	ACTUAL
Grating	NONE	NONE	Obspar update status	NONE	UPDATED
Data mode	VFAINT	VFAINT	On-chip summing requested	N	N
Observation mode	POINTING	POINTING	Subarray requested	1/2	1/2
Pointing RA	205.540431	205.5571520680321	Subarray start row	0	257
Pointing Dec	28.355385	28.37826099088008	Subarray row count	1024	512
Pointing Roll	26.224574	26.37326897503661	Alternating exposures requested	N	N
SIM focus pos (mm)	-0.684267	-0.6828225247311905	Primary exposure time	0.000000	1.6
SIM defocus (mm)	0	0.001444936568705701			
SIM translation stage pos (mm)	-190.132523	-190.1400660498719			
SIM translation stage offset (mm)	0	0.00754346686406393			
Observation start time	184956626.184000	184955661.99682			
Observation start date	2003-11-11T16:49:22	2003-11-11T16:34:21			
Observation end time	184966626.184000	184967166.08482			
Observation end date	2003-11-11T19:36:02	2003-11-11T19:46:06			
Read mode	TIMED	TIMED			

2.3 Aspect



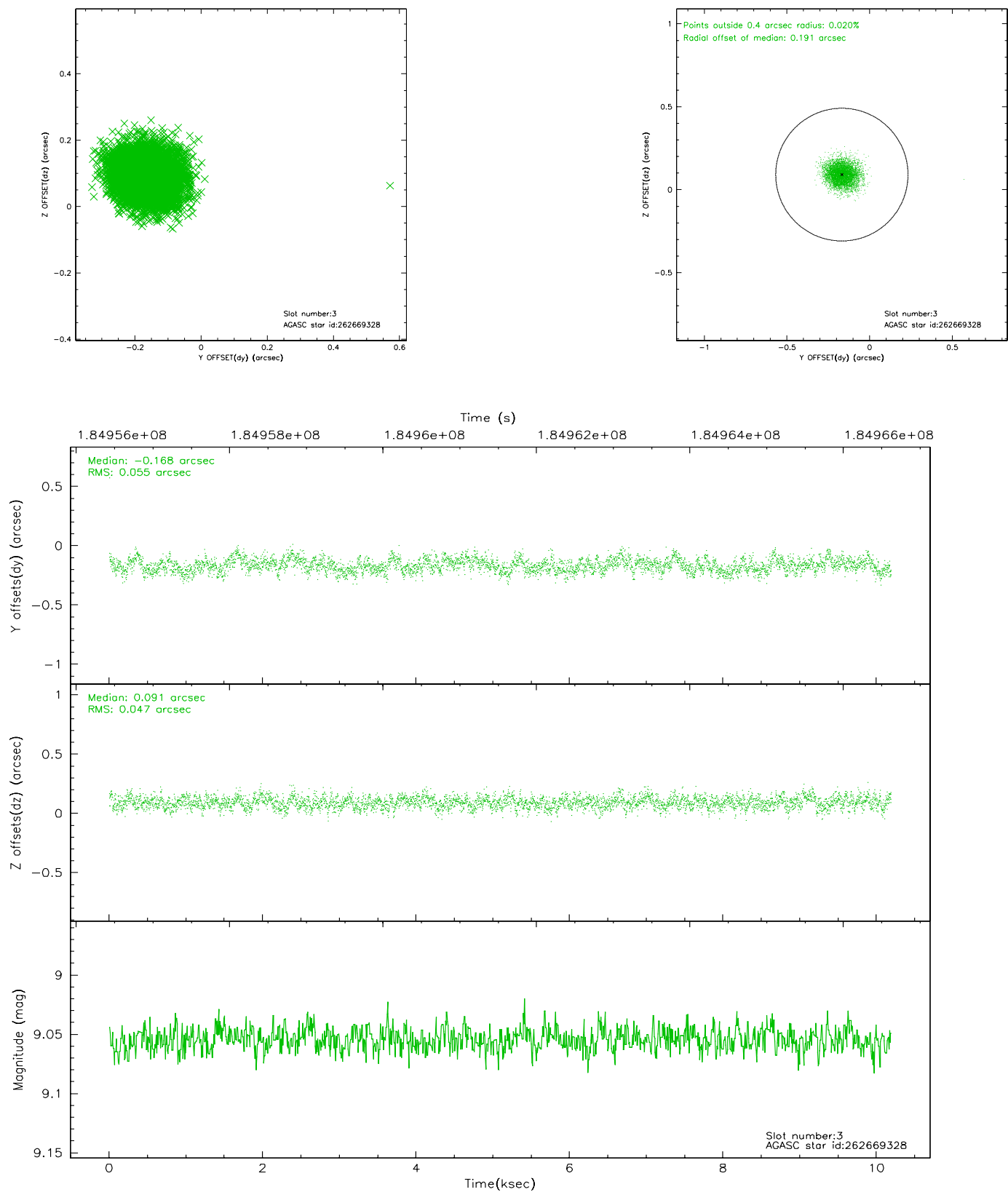


Slot Statistics

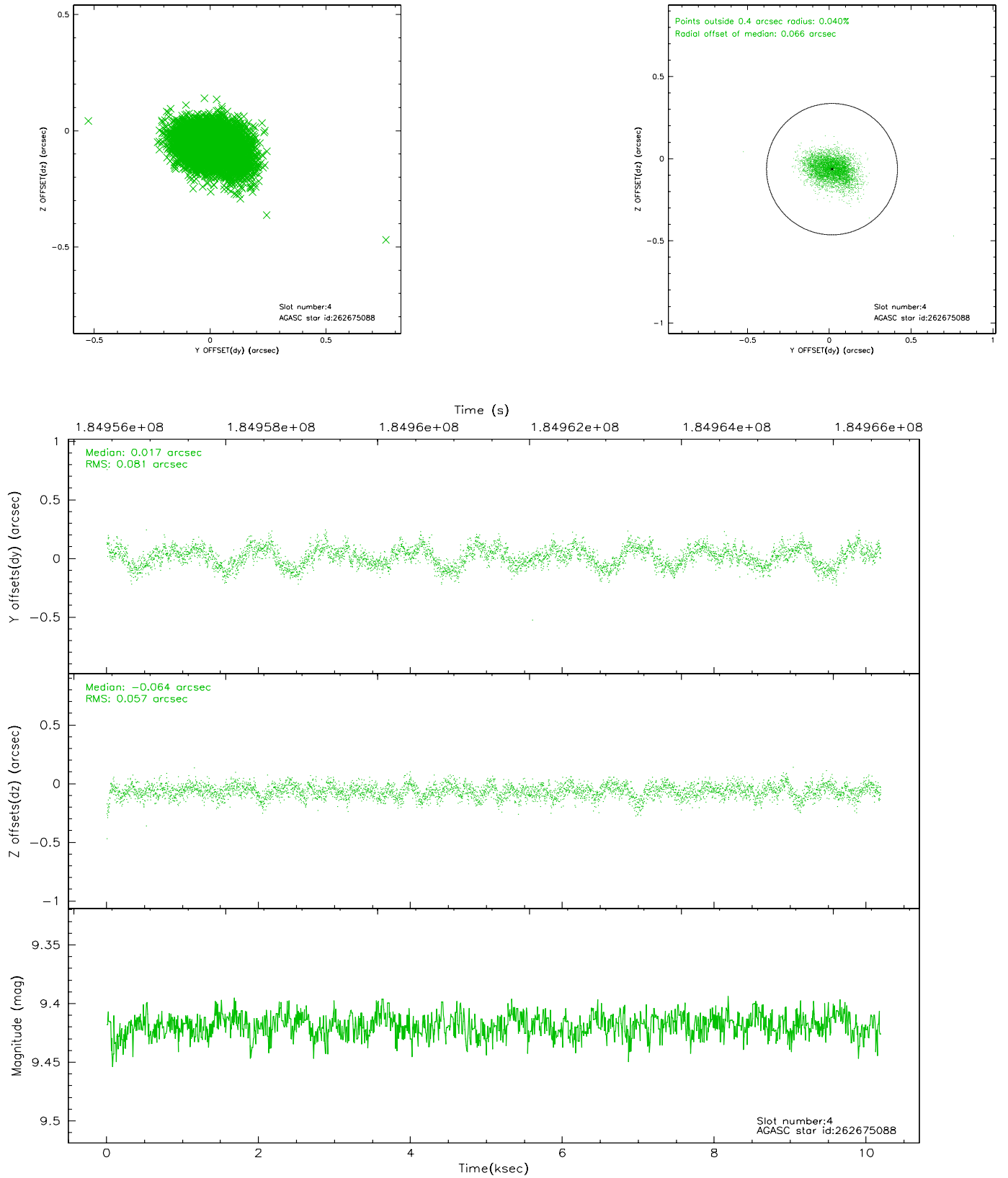
slot	status	id	mag	n_pts	med_dy	med_dz	dr1	dr2	ra	dec	mean_y	mean_z
0	FID	ACIS-S-1	7.18	2486	-0.002	-0.023	0.022	0.032	0.000000	0.000000	935.78	-1727.43
1	FID	ACIS-S-4	7.20	2486	0.015	0.023	0.015	0.022	0.000000	0.000000	2153.49	176.24
2	FID	ACIS-S-5	7.23	2486	-0.039	0.014	0.009	0.013	0.000000	0.000000	-1812.47	170.40
3	GUIDE	262669328	9.05	4971	-0.168	0.091	0.077	0.123	206.280601	28.188398	1844.89	-1570.25
4	GUIDE	262675088	9.42	4969	0.017	-0.064	0.105	0.172	204.972671	28.348526	-1621.90	776.16
5	GUIDE	262676040	9.15	4971	0.015	0.061	0.090	0.142	205.599968	27.875331	-593.48	-1633.59
6	GUIDE	262679552	8.58	4969	0.058	0.053	0.062	0.101	205.617019	28.202388	-25.03	-601.57
7	GUIDE	262681752	9.58	4967	0.082	-0.140	0.096	0.153	205.441552	28.454810	-121.99	459.38

2.4 Star Slots

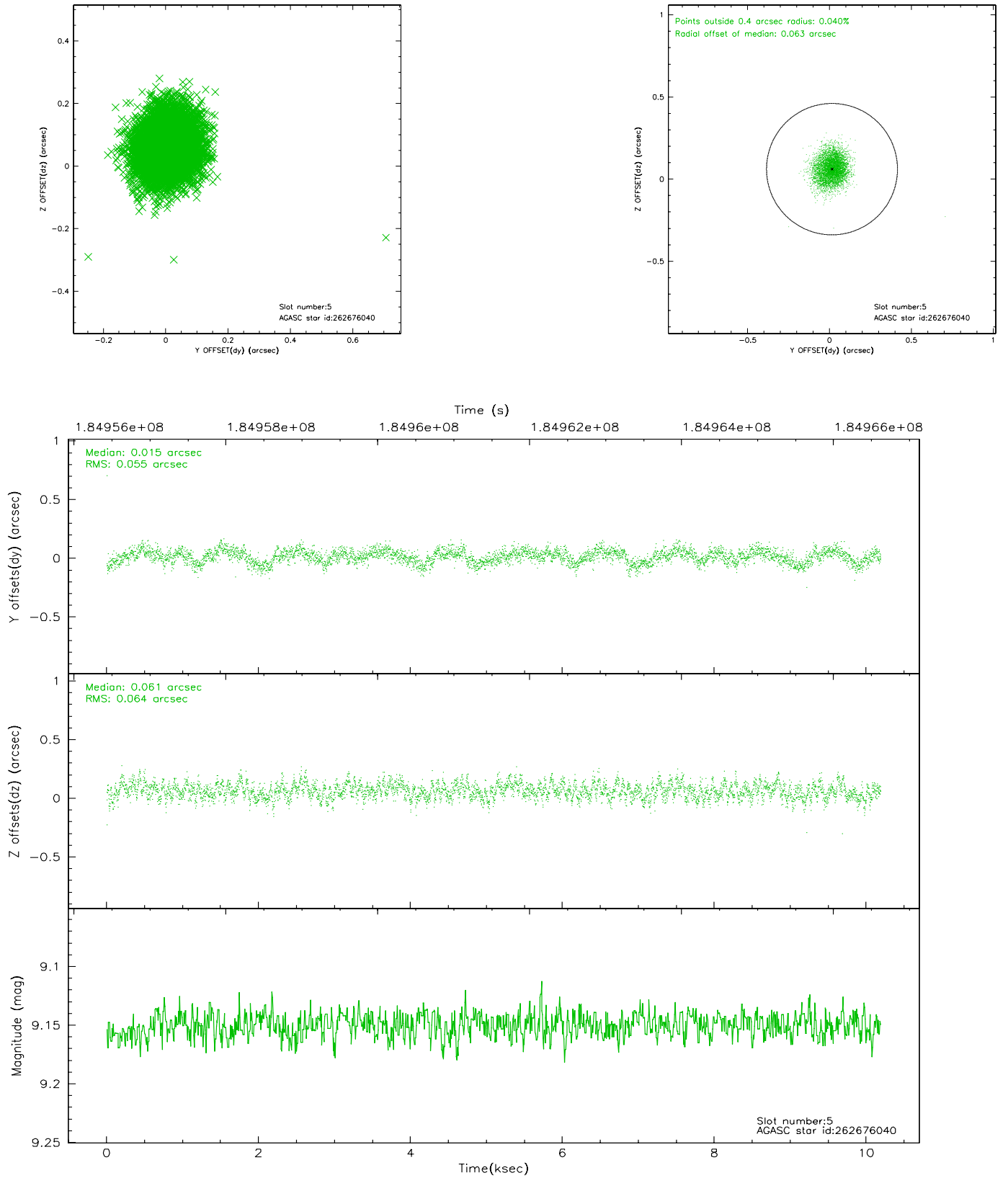
2.4.1 Slot 3



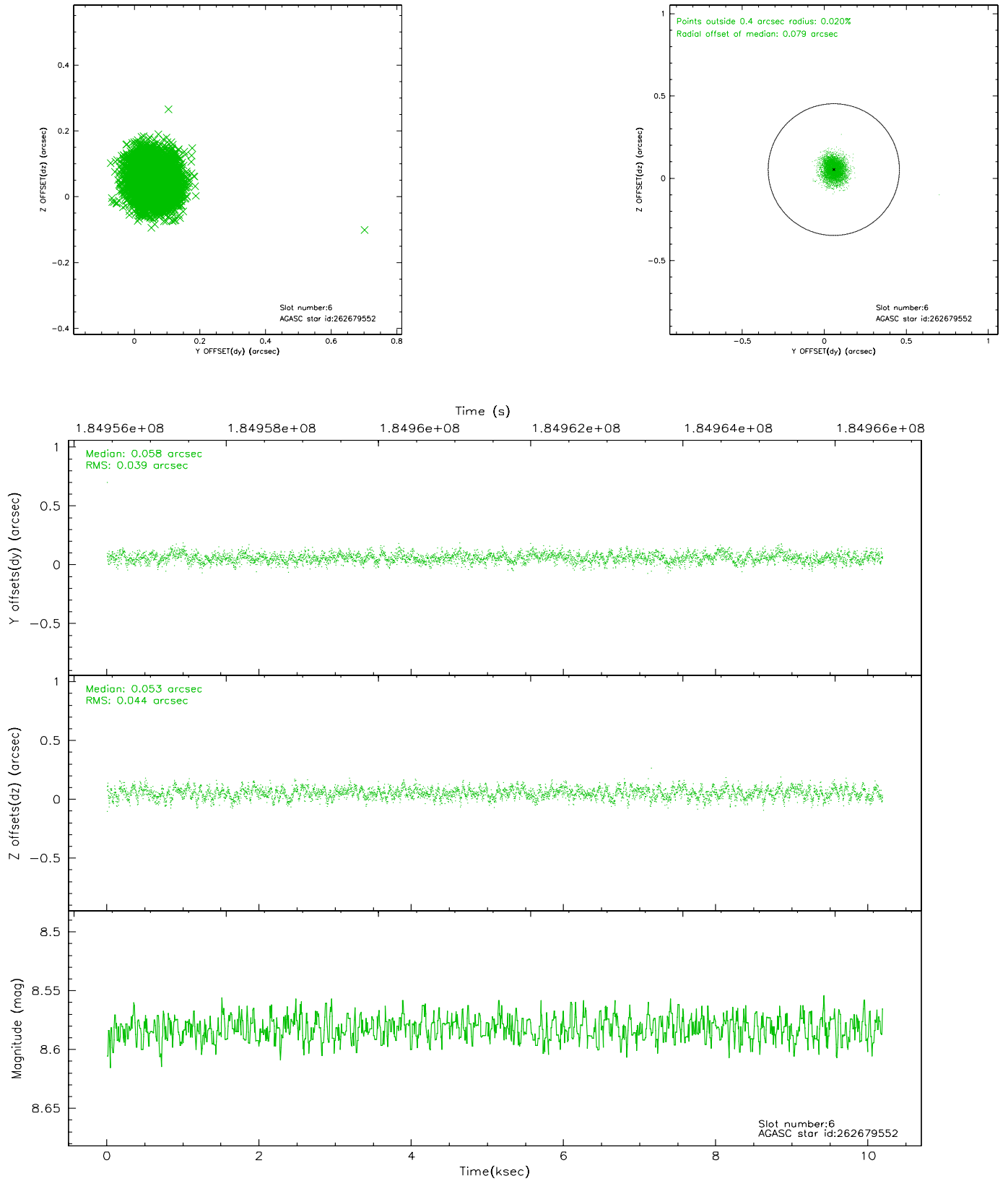
2.4.2 Slot 4



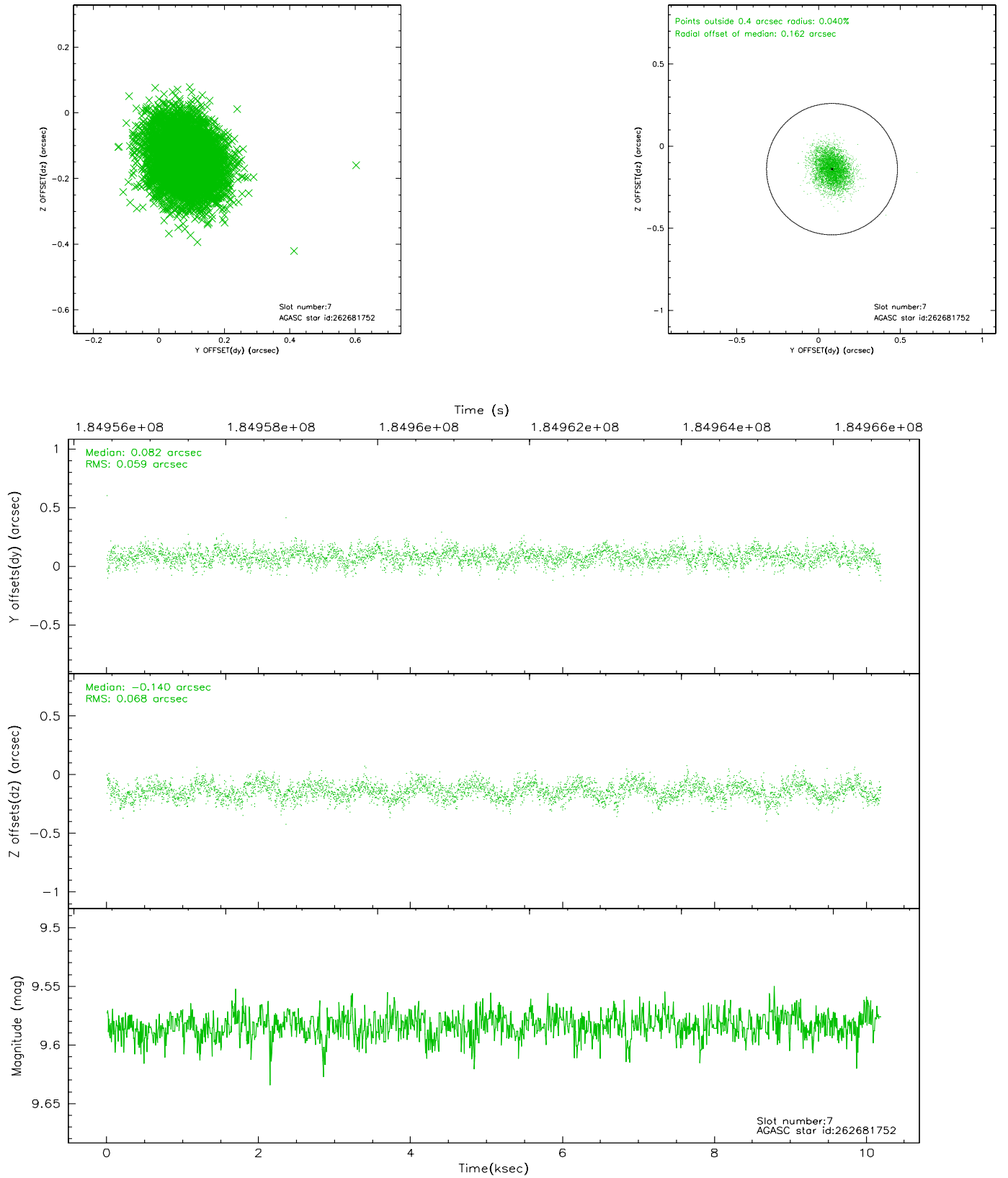
2.4.3 Slot 5



2.4.4 Slot 6

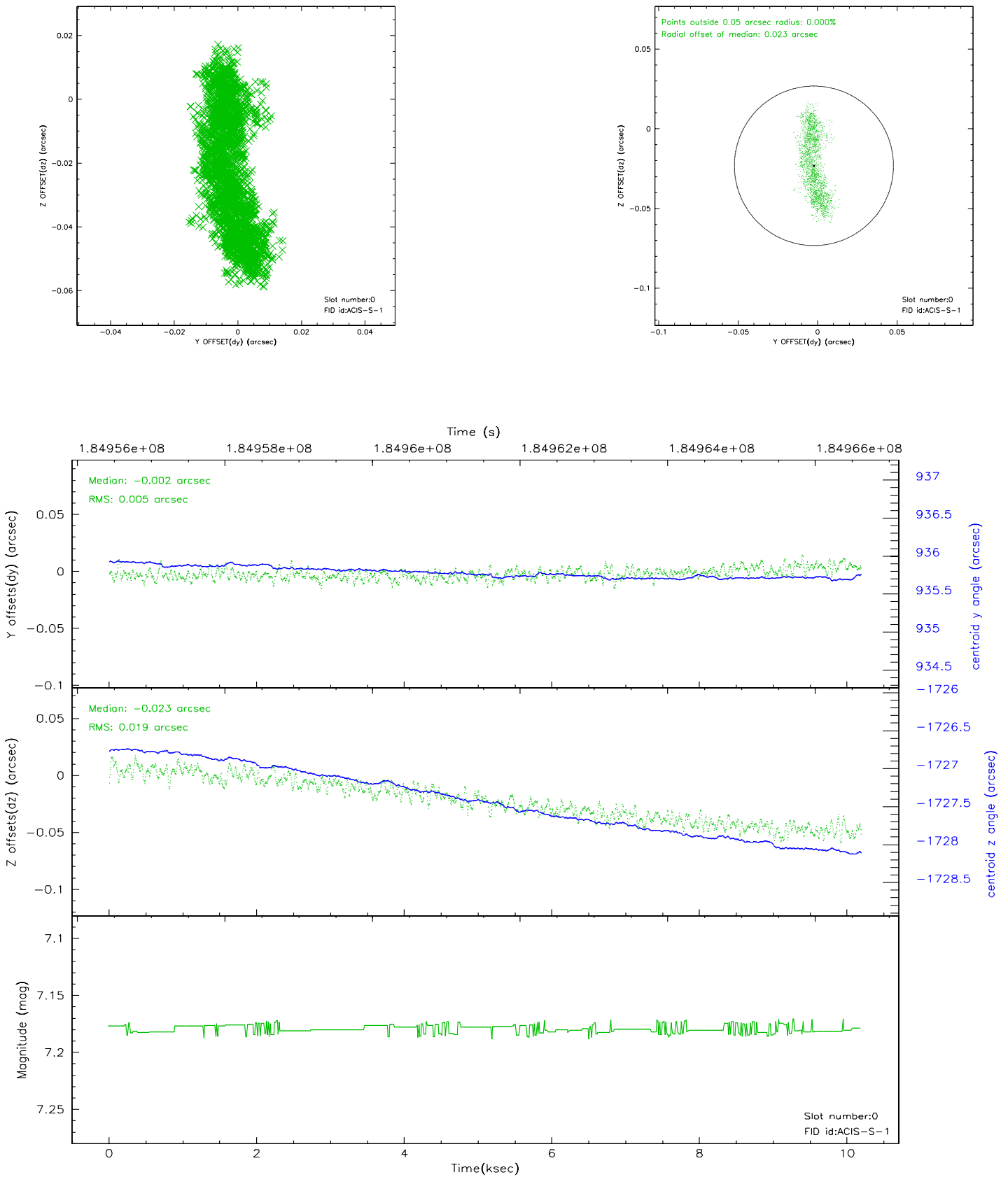


2.4.5 Slot 7

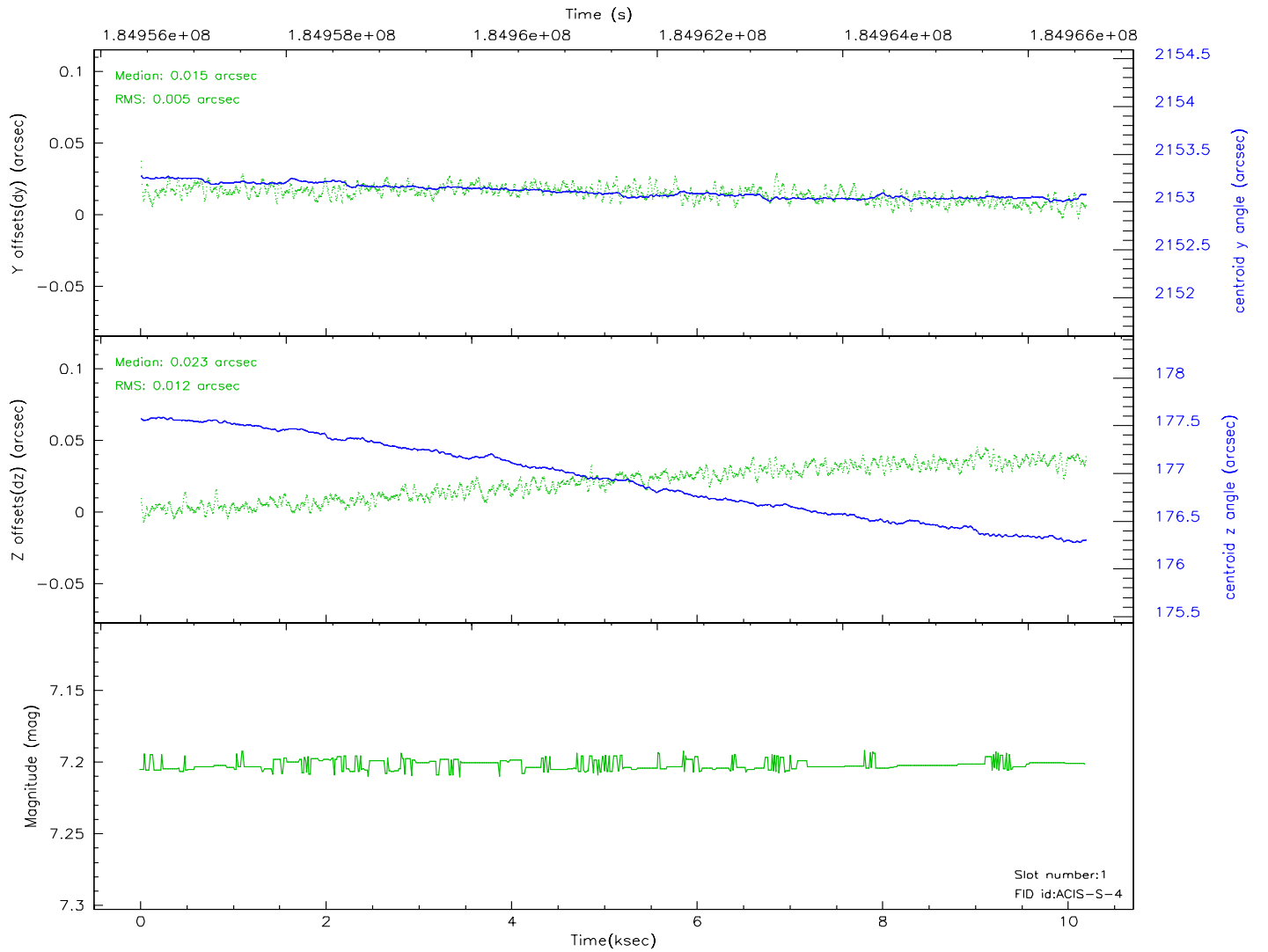
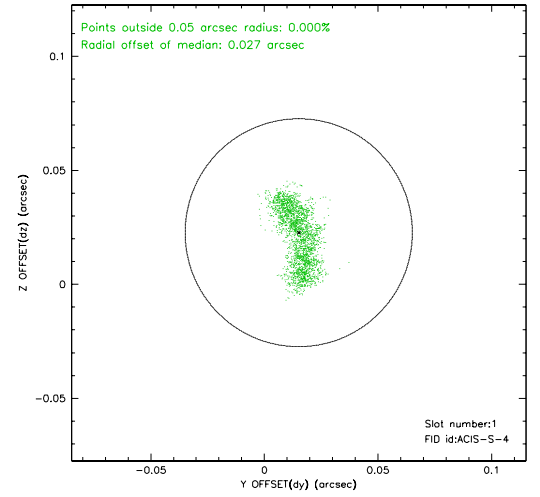
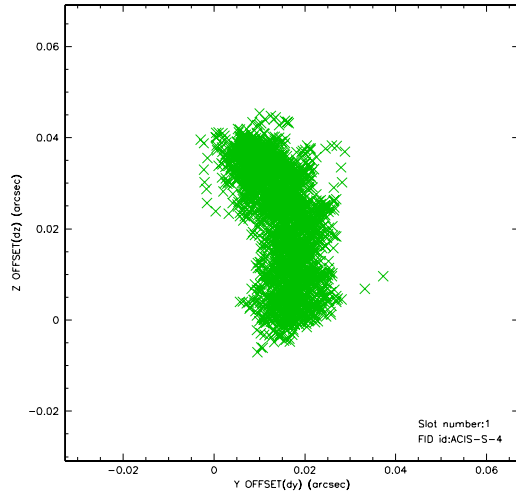


2.5 FID Slots

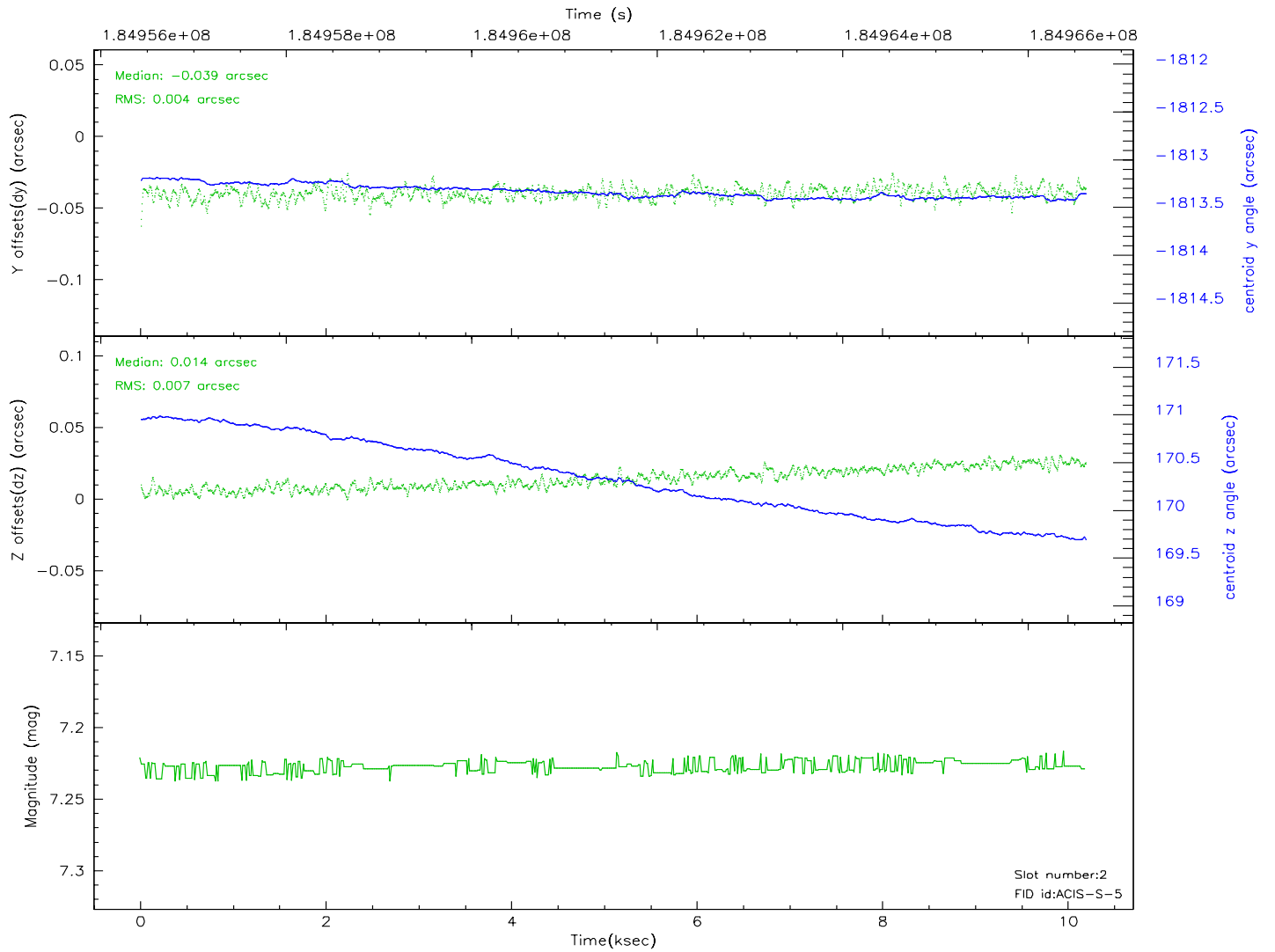
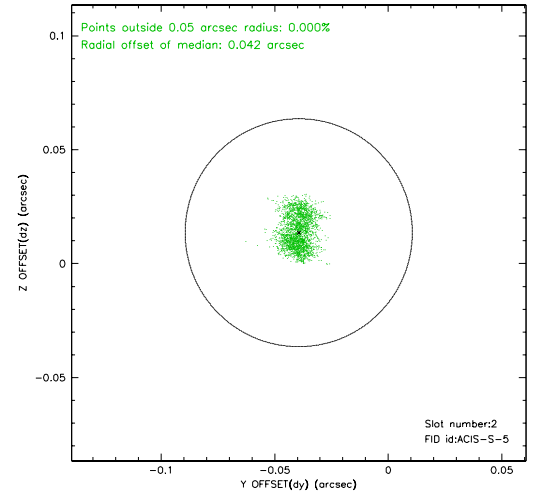
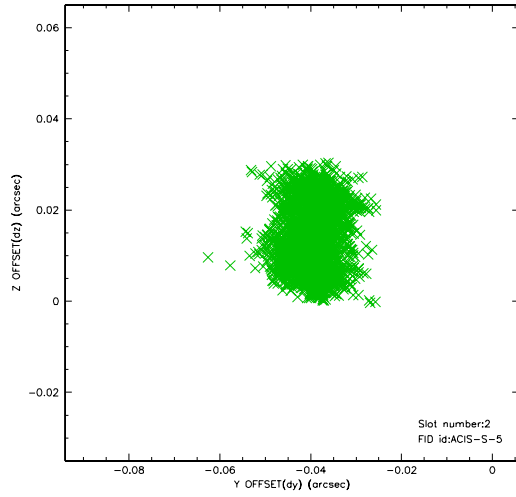
2.5.1 Slot 0



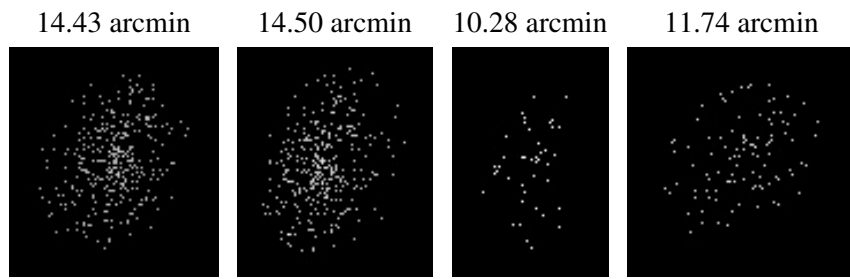
2.5.2 Slot 1



2.5.3 Slot 2



3 Point Sources



A Summary

A.1 Status

V&V Scientist	Beth Sundheim
V&V Date (YYYY-MM-DD)	2006.06.30
V&V Edition	1
V&V Disposition and Status	OK
V&V Charge Time	10.187

A.2 Comments