

V&V Reference Report

L2 ASCDS Version : 7.6.8.1

Observation 4522 - L2 Version 003
Chandra X-Ray Center

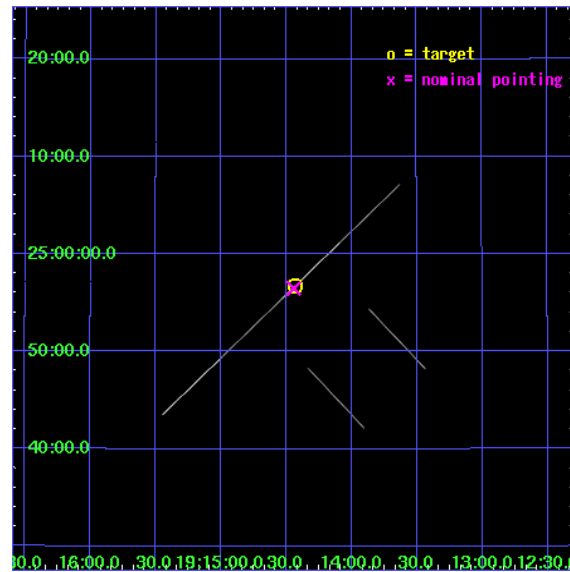
L2 Processing Date : Aug 14 2006

Contents

1	Front	2
2	OBI	3
2.1	OBI	3
2.1.1	Images	3
2.1.2	Parameters	4
2.1.3	Events	4
2.2	Compared Parameters	5
2.3	Aspect	6
2.4	Star Slots	9
2.4.1	Slot 3	9
2.4.2	Slot 4	10
2.4.3	Slot 5	11
2.4.4	Slot 6	12
2.4.5	Slot 7	13
2.5	FID Slots	14
2.5.1	Slot 0	14
2.5.2	Slot 1	15
2.5.3	Slot 2	16
A	Summary	17
A.1	Status	17
A.2	Comments	17

1 Front

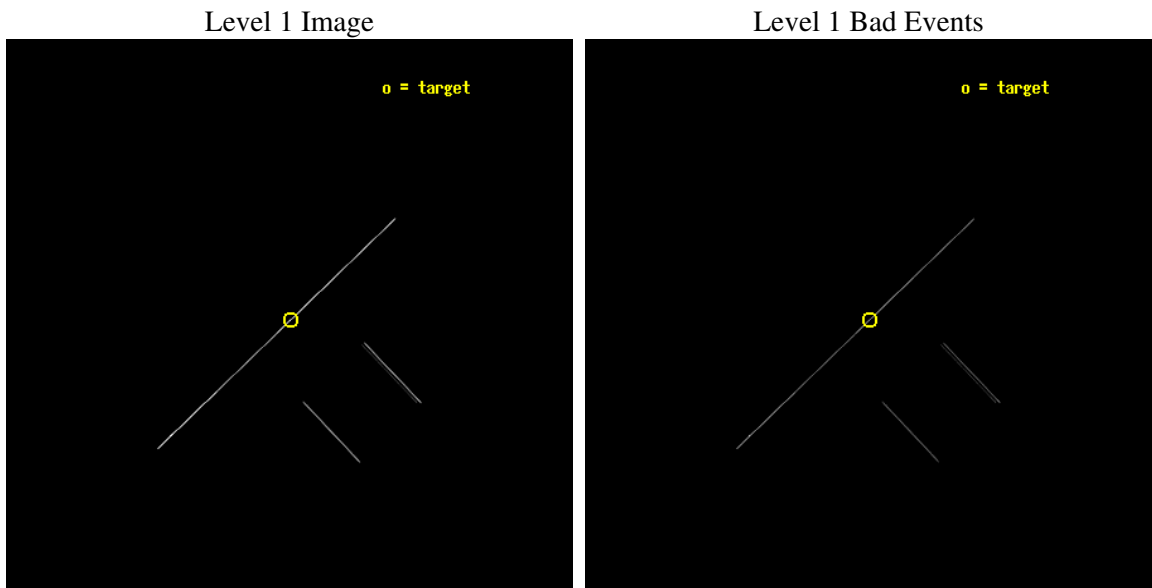
seq_num	300116
obs_id	4522
title	Continued Monitoring of the Orbital Evolution of RX J1914.4+2456
observer	Dr. Tod Strohmayer
object	RX J1914.4+2456
ra_targ	288.60875
dec_targ	24.945444
ra_nom	288.61065557899
dec_nom	24.941430512229
roll_nom	316.2585205222
revision	3
ontime	15140.0
livetime	15080.859375
ontime2	15140.0
ontime3	15140.0
ontime5	15140.0
ontime6	15140.0
ontime7	15140.0
ontime8	15140.0
l2events	215122



2 OBI

2.1 OBI

2.1.1 Images



2.1.2 Parameters

obi_num	0
ascdsver	7.6.8.1
caldsver	3.2.3
date	2006-08-14T21:12:13
revision	3

sched_exp_time	15000.000000
ontime	15976.63855058
ontime2	15976.586414278
ontime3	15976.622947276
ontime5	15976.638610899
ontime6	15976.63858372
ontime7	15976.63855058
ontime8	15978.097269058
l1events	324887

2.1.3 Events

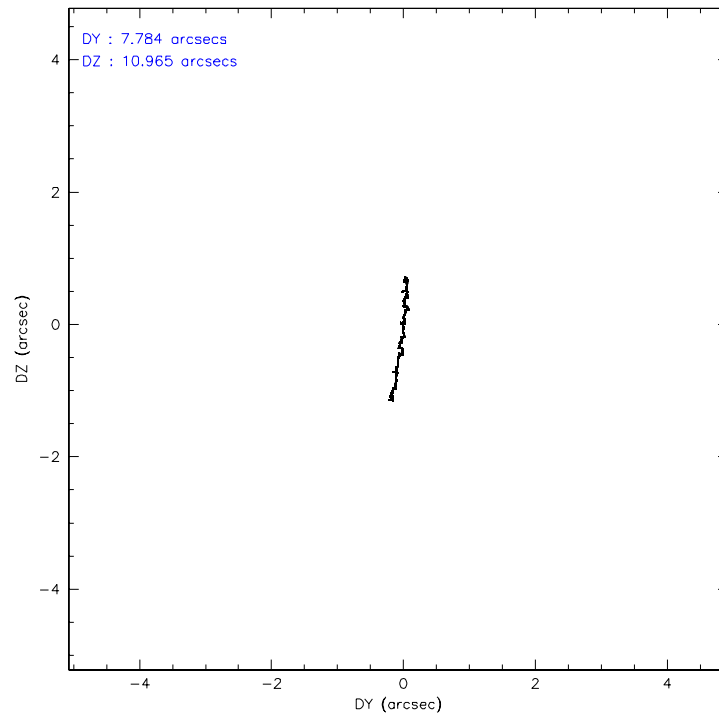
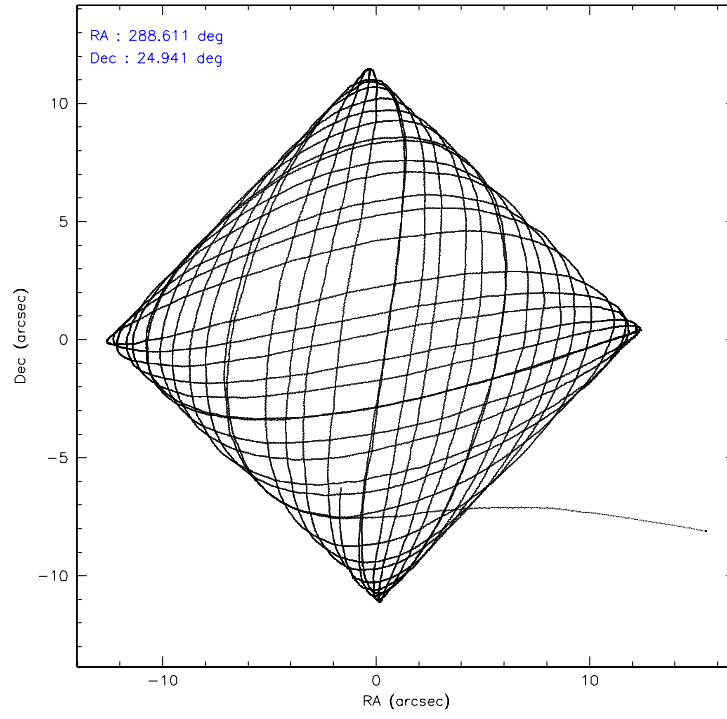
	ccd 2	ccd 3	ccd 5	ccd 6	ccd 7	ccd 8
level 1 events	23936	26879	109536	25814	88291	50431
rejected events	5513	6339	16295	6434	15887	9520
rejected %	23%	23%	14%	24%	17%	18%

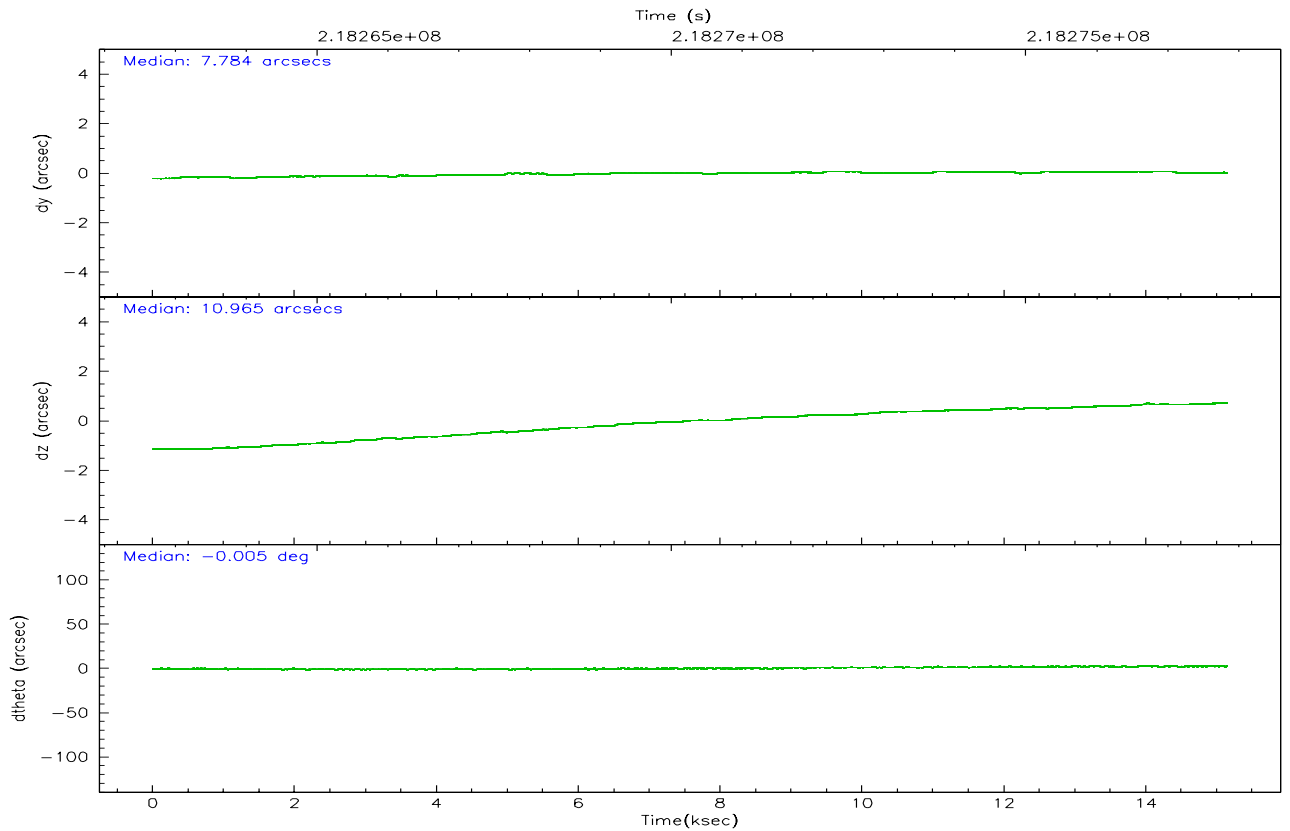
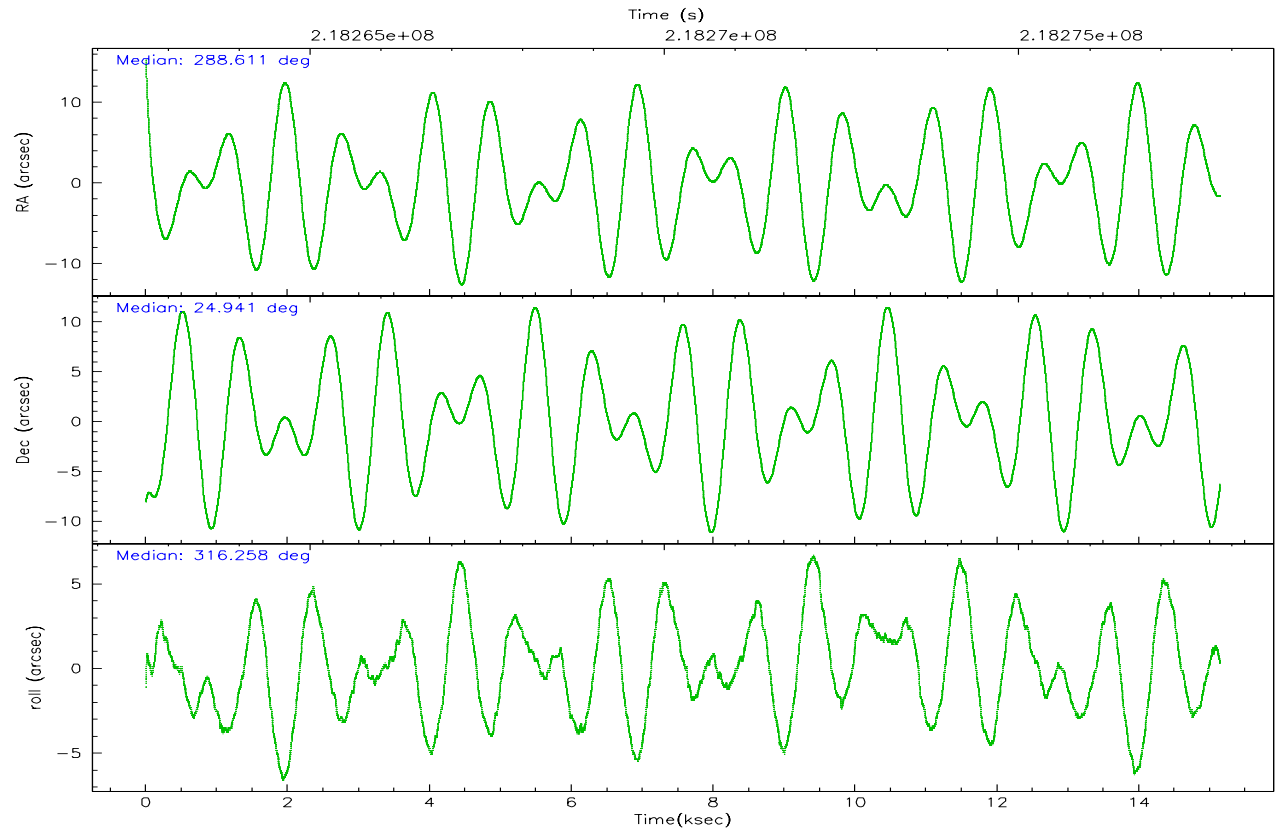
	ccd 2	ccd 3	ccd 5	ccd 6	ccd 7	ccd 8
grade 0 events	2458	2605	15358	2241	6803	7702
	10%	9%	14%	8%	7%	15%
grade 1 events	78	111	119	94	148	173
	0%	0%	0%	0%	0%	0%
grade 2 events	7652	8553	27973	7846	20280	13866
	31%	31%	25%	30%	22%	27%
grade 3 events	2361	2913	1901	2563	3658	4800
	9%	10%	1%	9%	4%	9%
grade 4 events	2436	2524	1885	2465	3587	4622
	10%	9%	1%	9%	4%	9%
grade 5 events	4401	5094	9752	5194	12063	6954
	18%	18%	8%	20%	13%	13%
grade 6 events	4550	5079	52548	5411	41752	12314
	19%	18%	47%	20%	47%	24%
grade 7 events	0	0	0	0	0	0
	0%	0%	0%	0%	0%	0%

2.2 Compared Parameters

Parameter	Planned	Actual	Parameter	Planned	Actual
Instrument	ACIS	ACIS	Obspar format version number	6	6
Detector	ACIS-235678	ACIS-235678	Obspar file type	PREDICTED	ACTUAL
Grating	NONE	NONE	Obspar update status	NONE	UPDATED
Data mode	CC33_GRADED	CC33_GRADED	On-chip summing requested	N	N
Observation mode	POINTING	POINTING	Subarray requested	NONE	NONE
Pointing RA	288.581407	288.6106555789913	Alternating exposures requested	N	N
Pointing Dec	24.947556	24.94143051222876	Primary exposure time	0.000000	0
Pointing Roll	316.114224	316.2585205222027			
SIM focus pos (mm)	-0.684267	-0.6828225247311905			
SIM defocus (mm)	0	0.001444936568705701			
SIM translation stage pos (mm)	-190.132523	-190.1425803651734			
SIM translation stage offset (mm)	0	0.01005778216563158			
Observation start time	218262839.184000	218261863.30463			
Observation start date	2004-12-01T04:32:55	2004-12-01T04:17:43			
Observation end time	218277839.184000	218278423.20538			
Observation end date	2004-12-01T08:42:55	2004-12-01T08:53:43			
Read mode	CONTINUOUS	CONTINUOUS			

2.3 Aspect



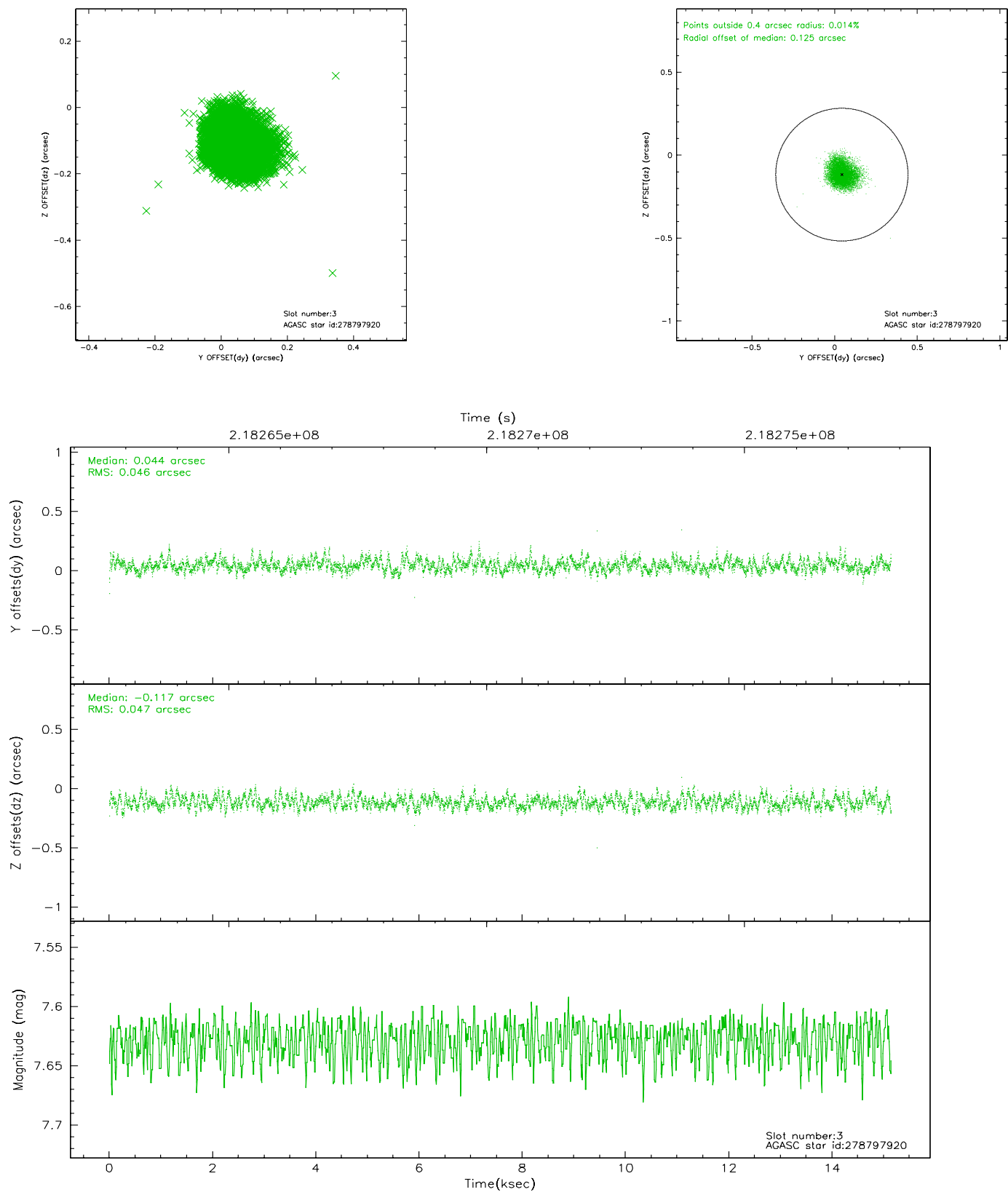


Slot Statistics

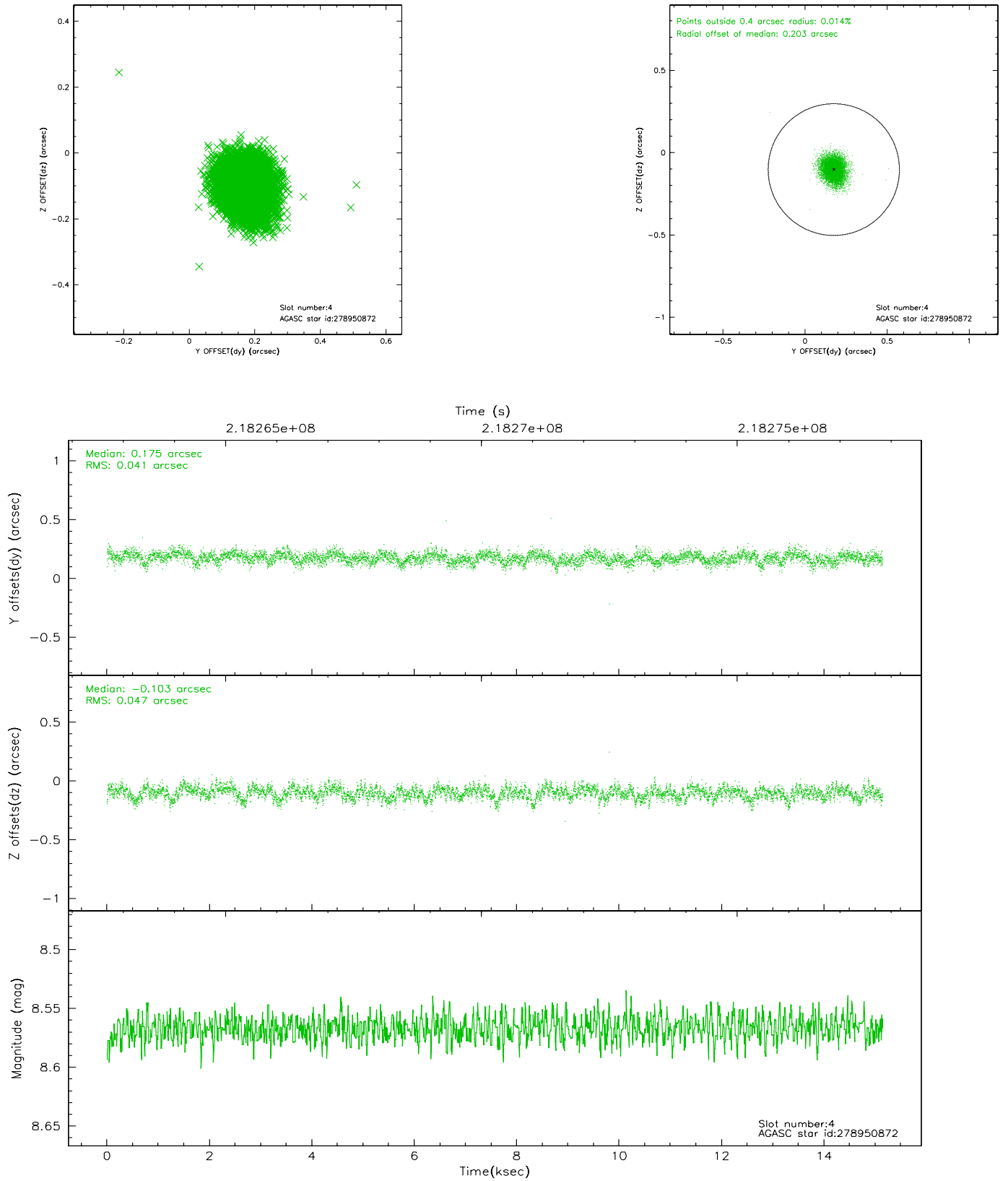
slot	status	id	mag	n_pts	med_dy	med_dz	dr1	dr2	ra	dec	mean_y	mean_z
0	FID	ACIS-S-2	7.10	3694	-0.024	0.013	0.018	0.031	0.000000	0.000000	-760.52	-1732.07
1	FID	ACIS-S-4	7.21	3694	0.040	0.007	0.019	0.038	0.000000	0.000000	2152.66	176.16
2	FID	ACIS-S-5	7.23	3694	-0.051	-0.010	0.011	0.022	0.000000	0.000000	-1813.04	170.08
3	GUIDE	278797920	7.63	7388	0.044	-0.117	0.070	0.111	288.580174	25.013203	-166.40	167.64
4	GUIDE	278950872	8.57	7386	0.175	-0.103	0.065	0.108	288.955805	24.789192	1276.38	438.73
5	GUIDE	278953272	8.37	7387	-0.097	0.194	0.056	0.089	289.216166	24.729034	2038.28	875.77
6	GUIDE	278795448	8.95	7386	-0.087	0.053	0.093	0.147	287.699473	24.798355	-1710.76	-2377.98
7	GUIDE	278808544	8.95	7386	-0.033	-0.027	0.083	0.135	287.819957	25.159250	-2321.36	-1165.90

2.4 Star Slots

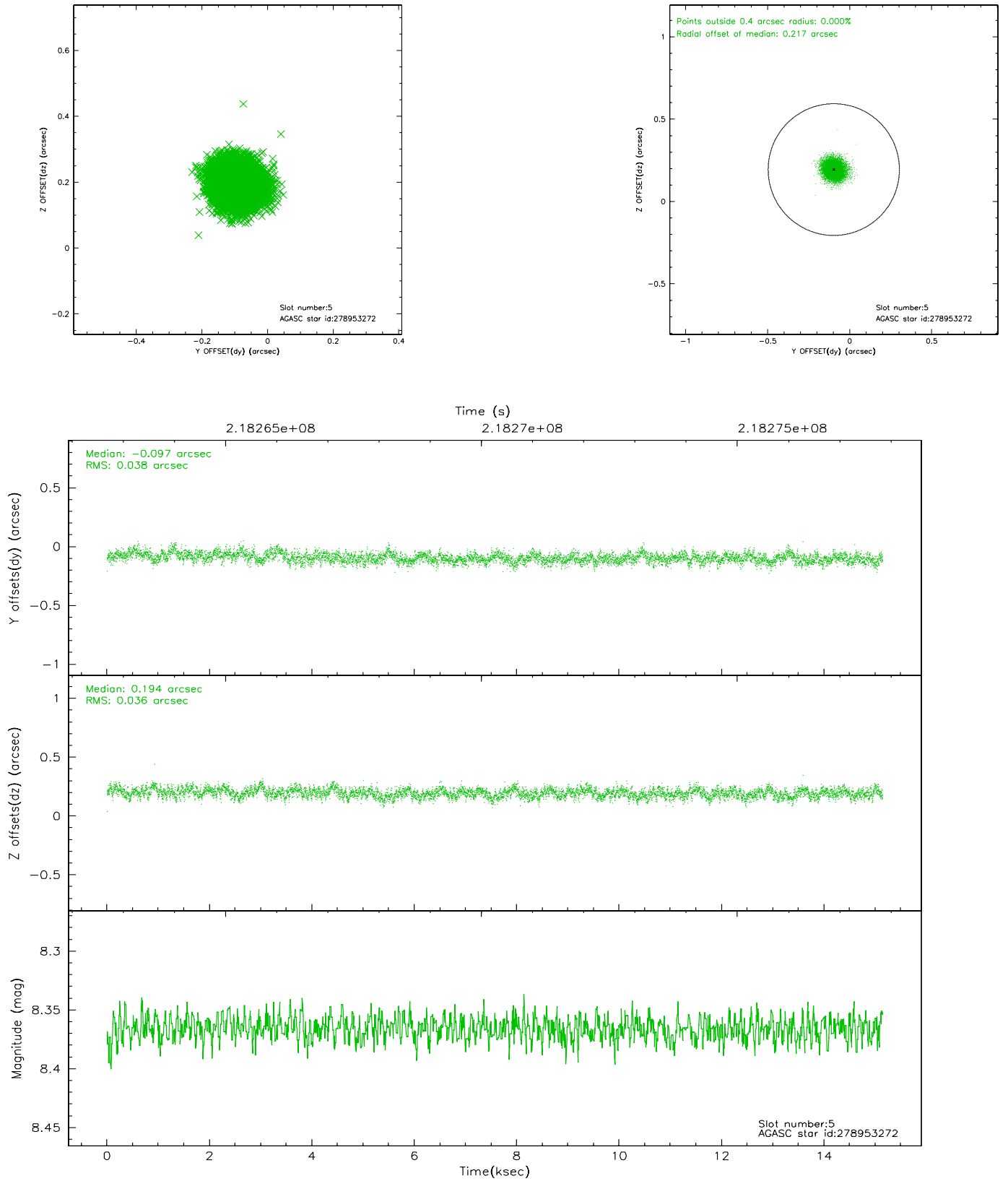
2.4.1 Slot 3



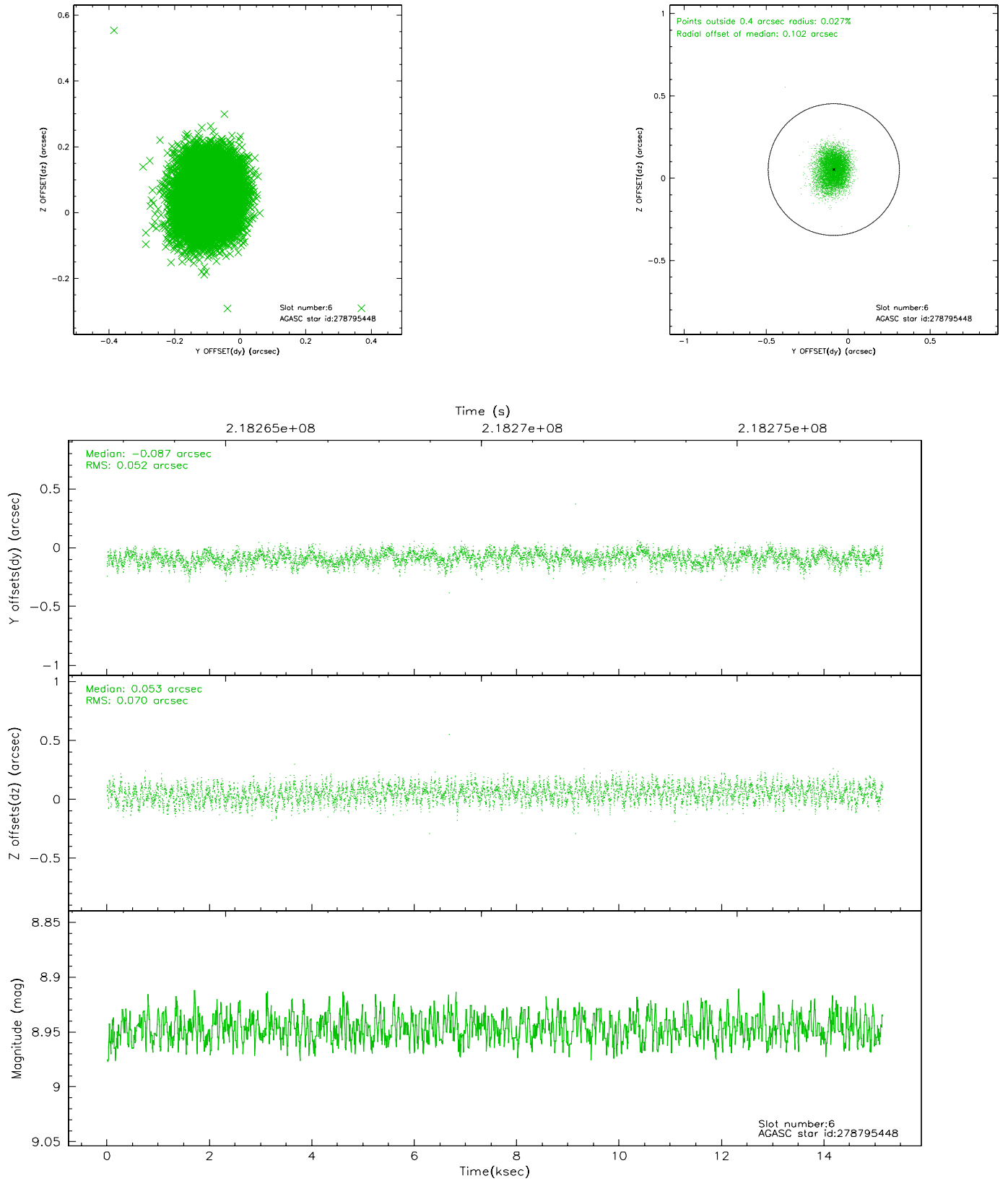
2.4.2 Slot 4



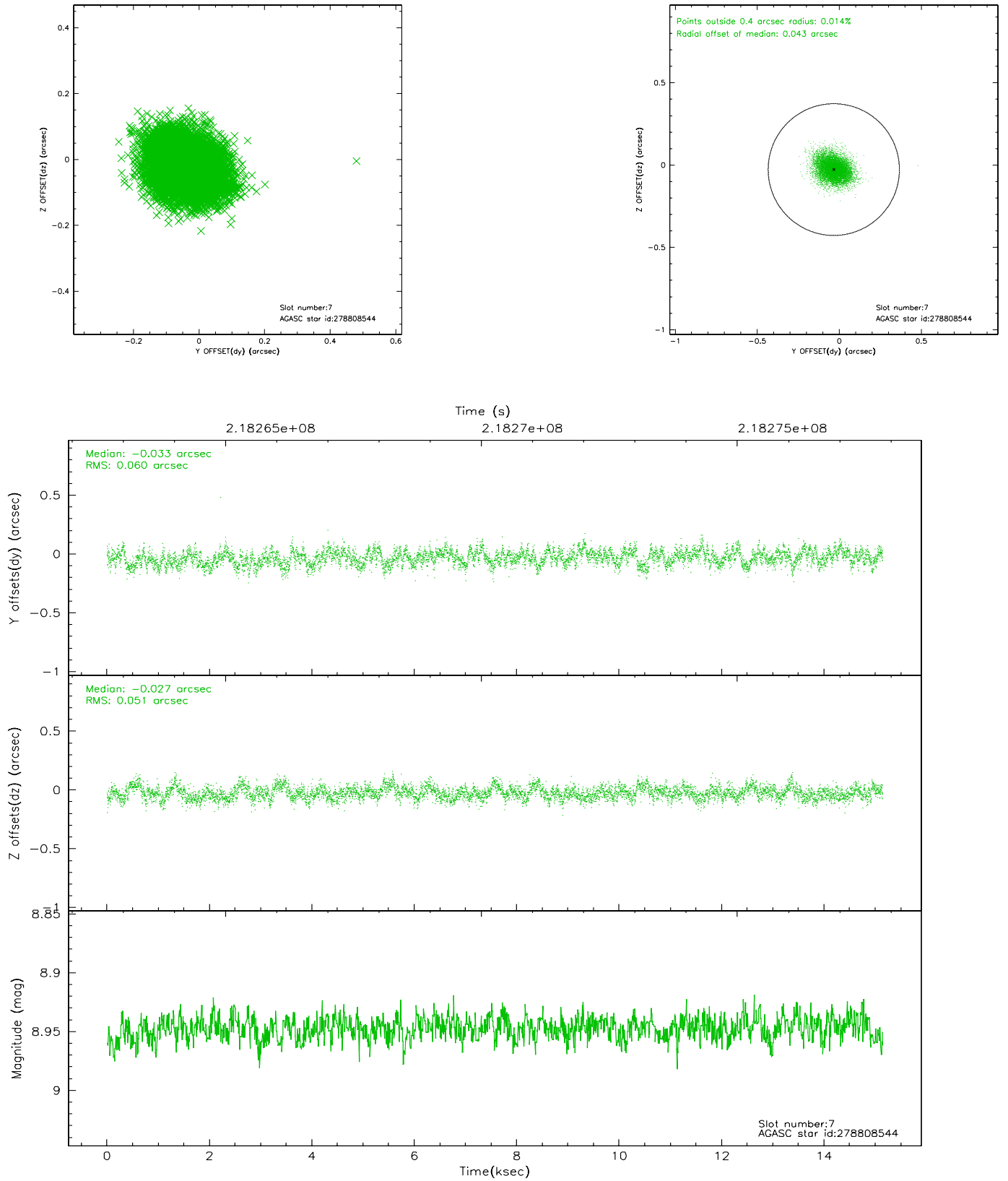
2.4.3 Slot 5



2.4.4 Slot 6

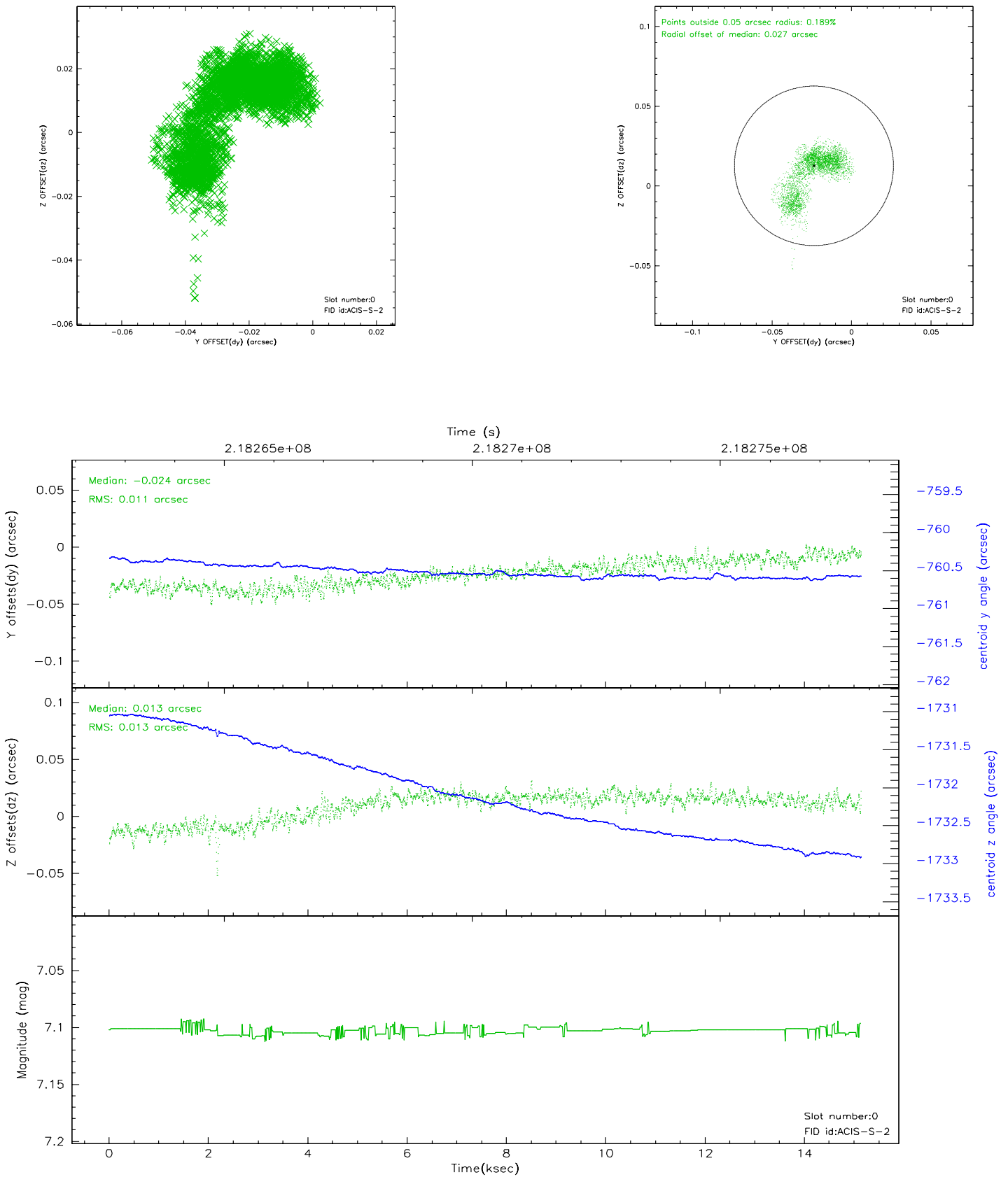


2.4.5 Slot 7

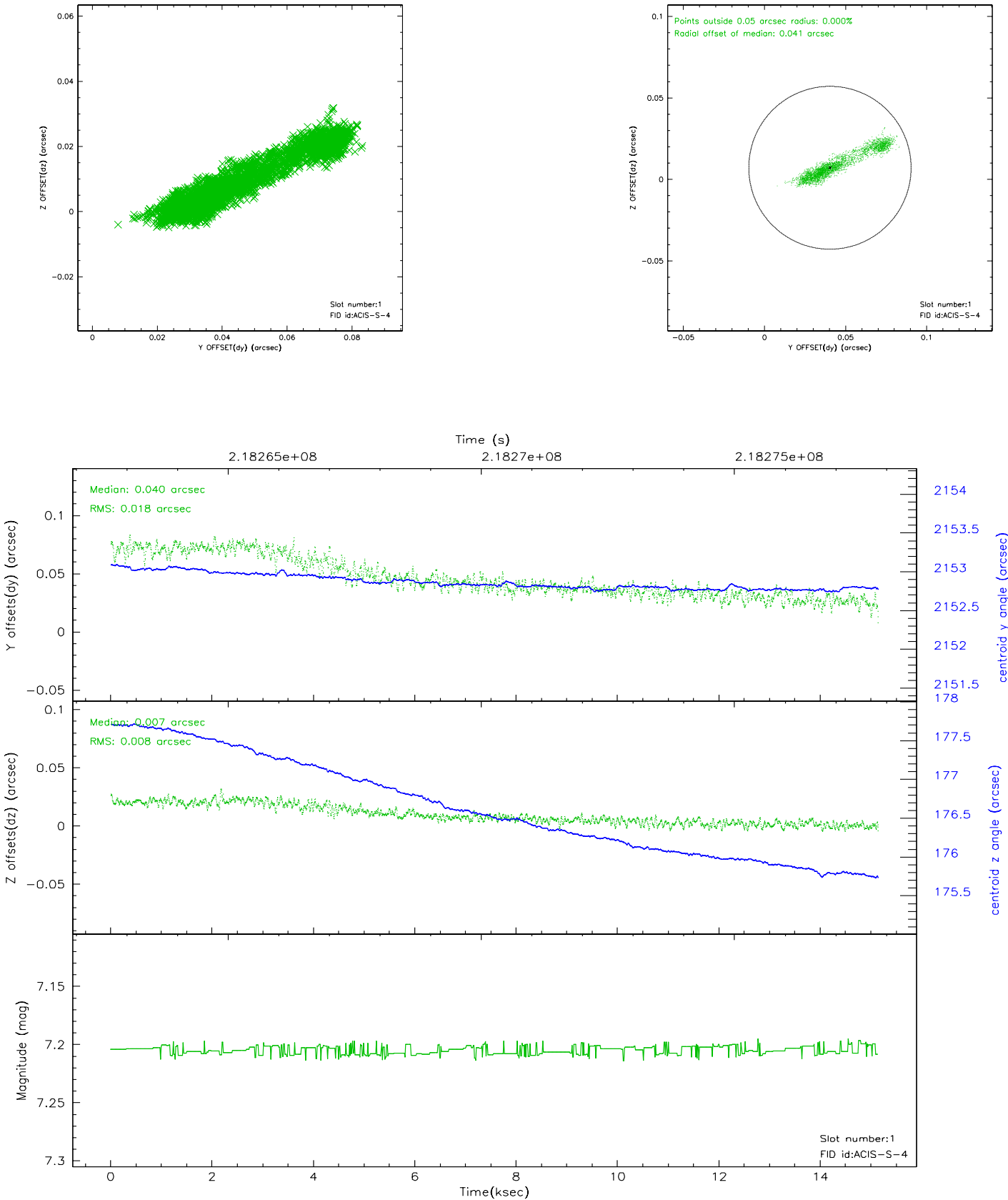


2.5 FID Slots

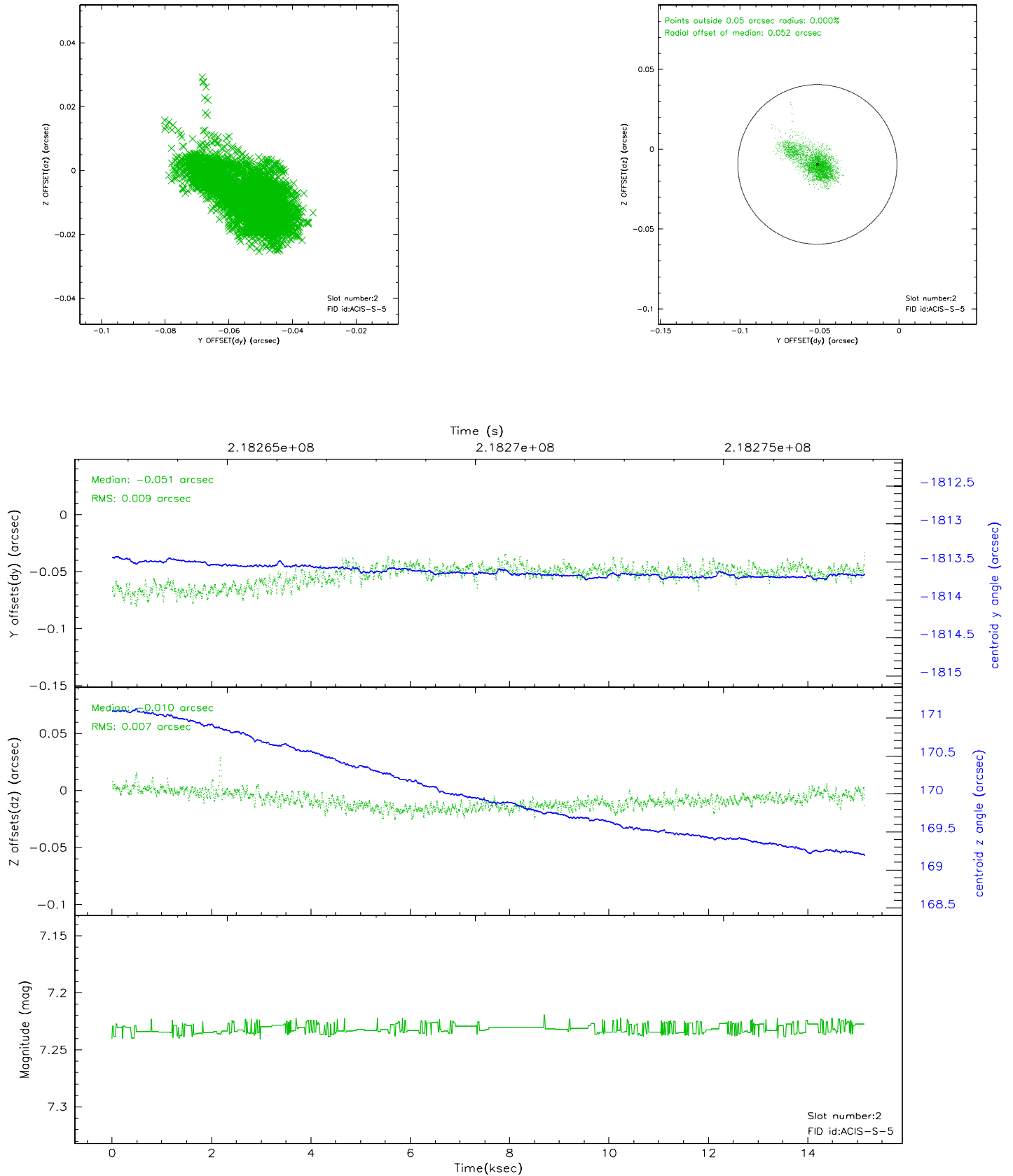
2.5.1 Slot 0



2.5.2 Slot 1



2.5.3 Slot 2



A Summary

A.1 Status

V&V Scientist	Beth Sundheim
V&V Date (YYYY-MM-DD)	2006.08.21
V&V Edition	1
V&V Disposition and Status	OK
V&V Charge Time	15.1435

A.2 Comments