

V&V Reference Report

L2 ASCDS Version : 7.6.8

Observation 4422 - L2 Version 001
Chandra X-Ray Center

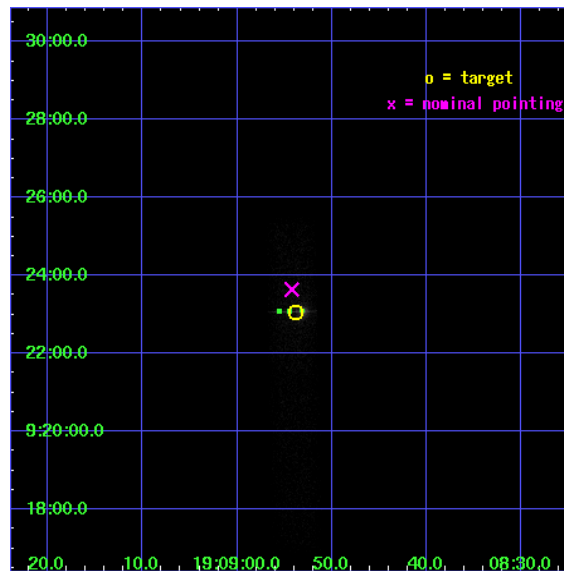
L2 Processing Date : Jul 25 2006

Contents

1	Front	2
2	OBI	3
2.1	OBI	3
2.1.1	Images	3
2.1.2	Bias	3
2.1.3	Parameters	4
2.1.4	Events	4
2.2	Compared Parameters	5
2.3	Aspect	6
2.4	Star Slots	9
2.4.1	Slot 3	9
2.4.2	Slot 4	10
2.4.3	Slot 5	11
2.4.4	Slot 6	12
2.4.5	Slot 7	13
2.5	FID Slots	14
2.5.1	Slot 0	14
2.5.2	Slot 1	15
2.5.3	Slot 2	16
3	Point Sources	17
A	Summary	18
A.1	Status	18
A.2	Comments	18

1 Front

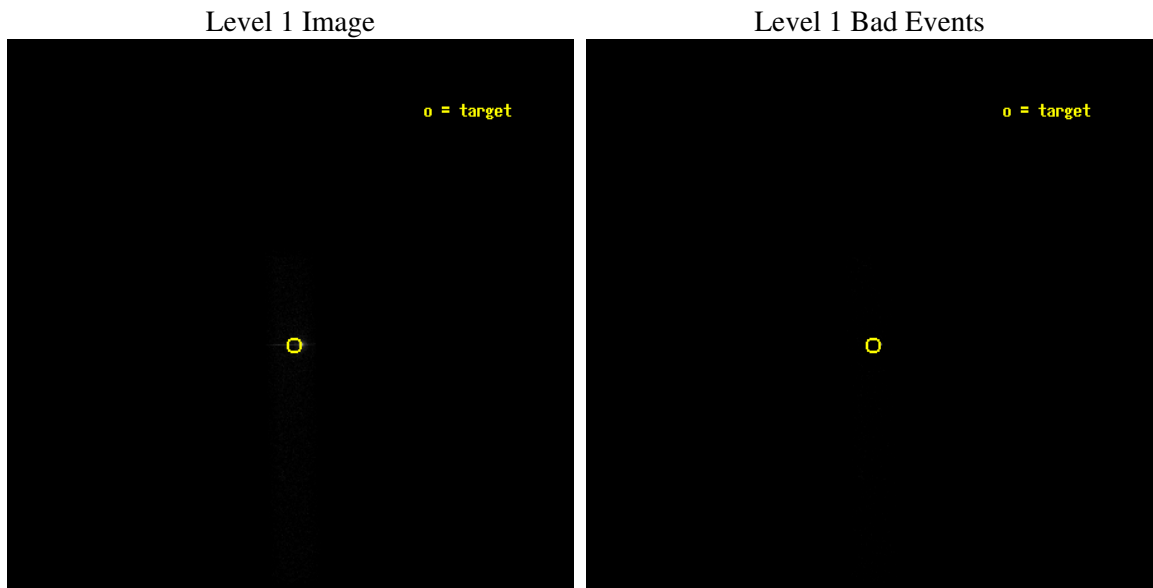
seq_num	400319
obs_id	4422
title	THE BHC SOFT X-RAY TRANSIENT XTE J1908+094 RETURNING TO QUIESCENCE
observer	Dr Peter Jonker
object	XTE J1908+094
dtcycle	0
cycle	P
ra_targ	287.224167
dec_targ	9.384694
ra_nom	287.22601926626
dec_nom	9.394064484935
roll_nom	88.876964936112
revision	2
ontime	5212.4000776708
livetime	4727.3717374123
ontime7	5212.4000776708
l2events	15138



2 OBI

2.1 OBI

2.1.1 Images



2.1.2 Bias

Chip 7



2.1.3 Parameters

obi_num	0
ascdsver	7.6.8
caldbver	3.2.2
date	2006-07-25T17:27:58
revision	2

sched_exp_time	5000.000000
ontime	5859.5854164362
ontime7	5859.5854164362
l1events	26311

2.1.4 Events

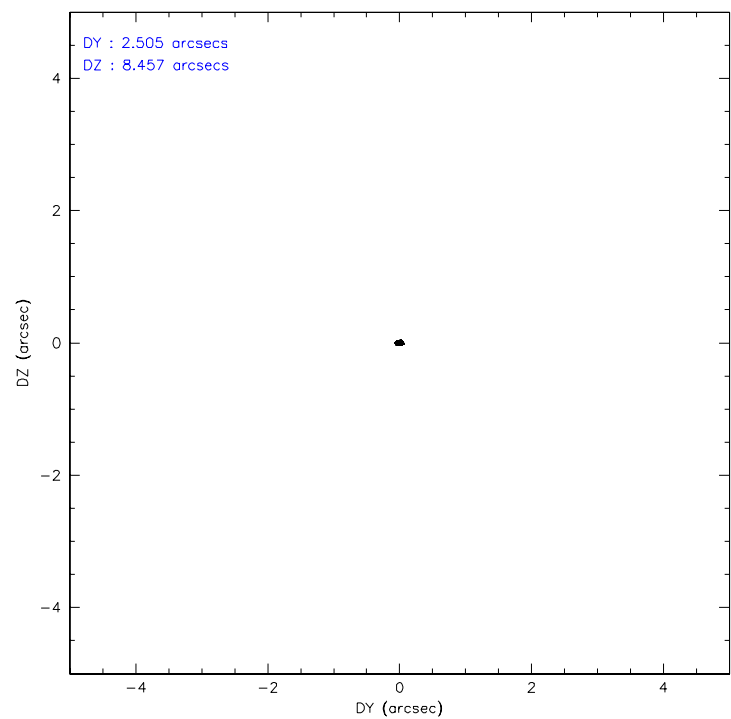
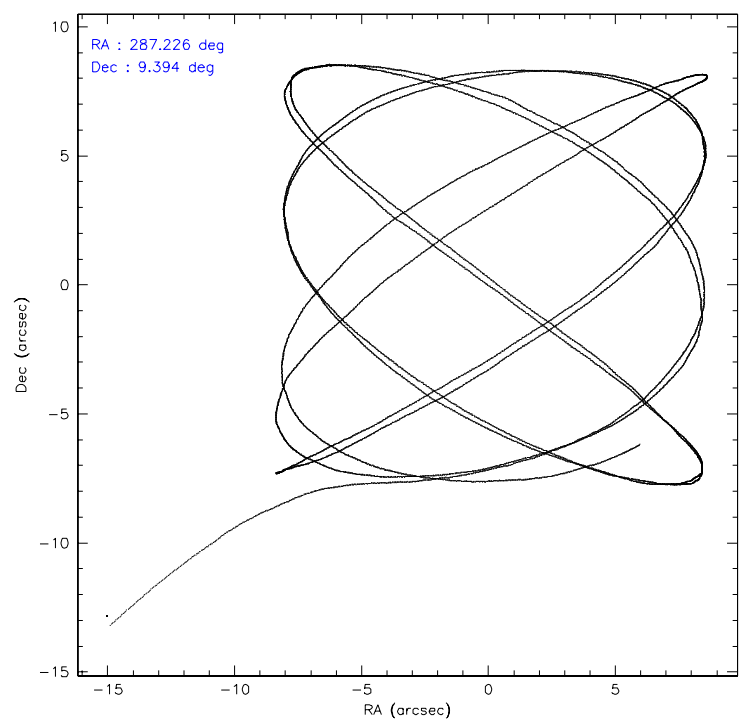
	ccd 7
level 1 events	26311
rejected events	11018
rejected %	41%

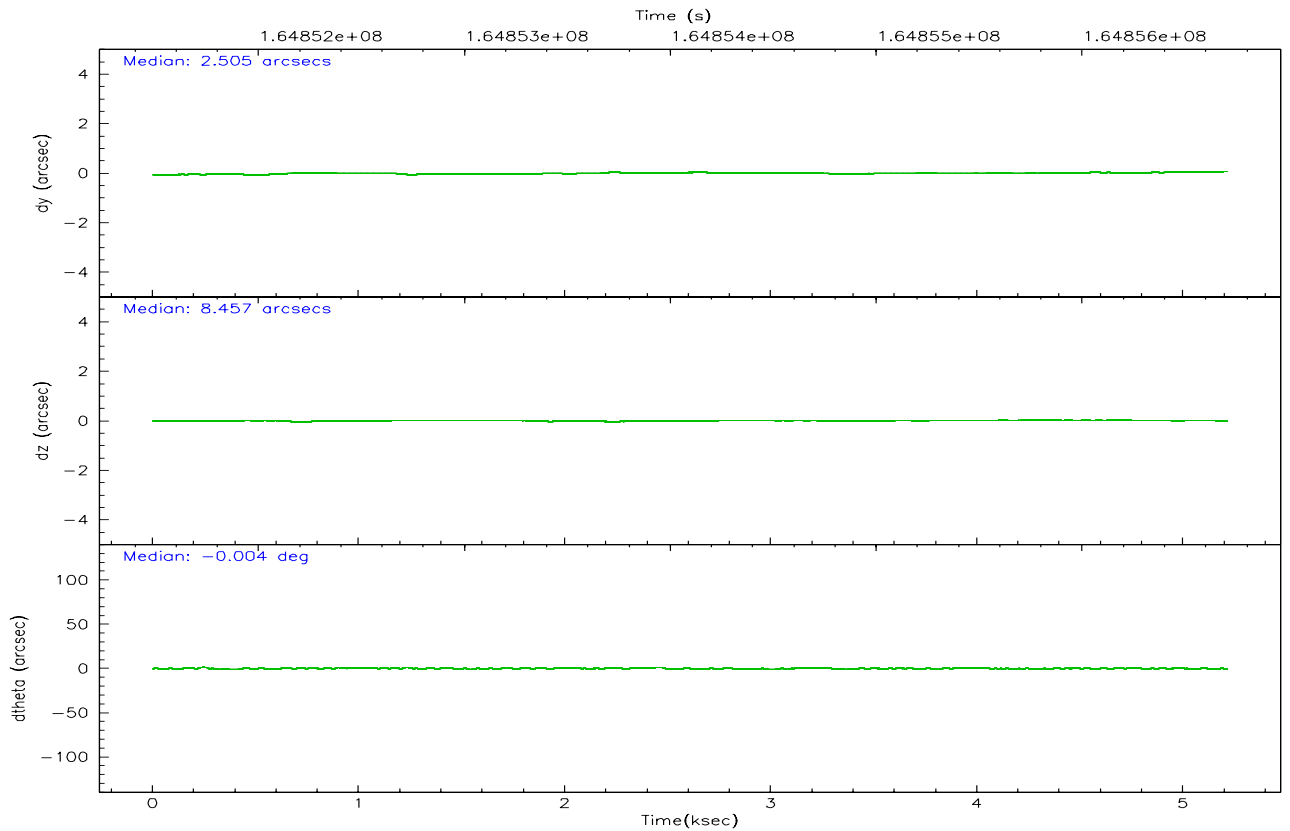
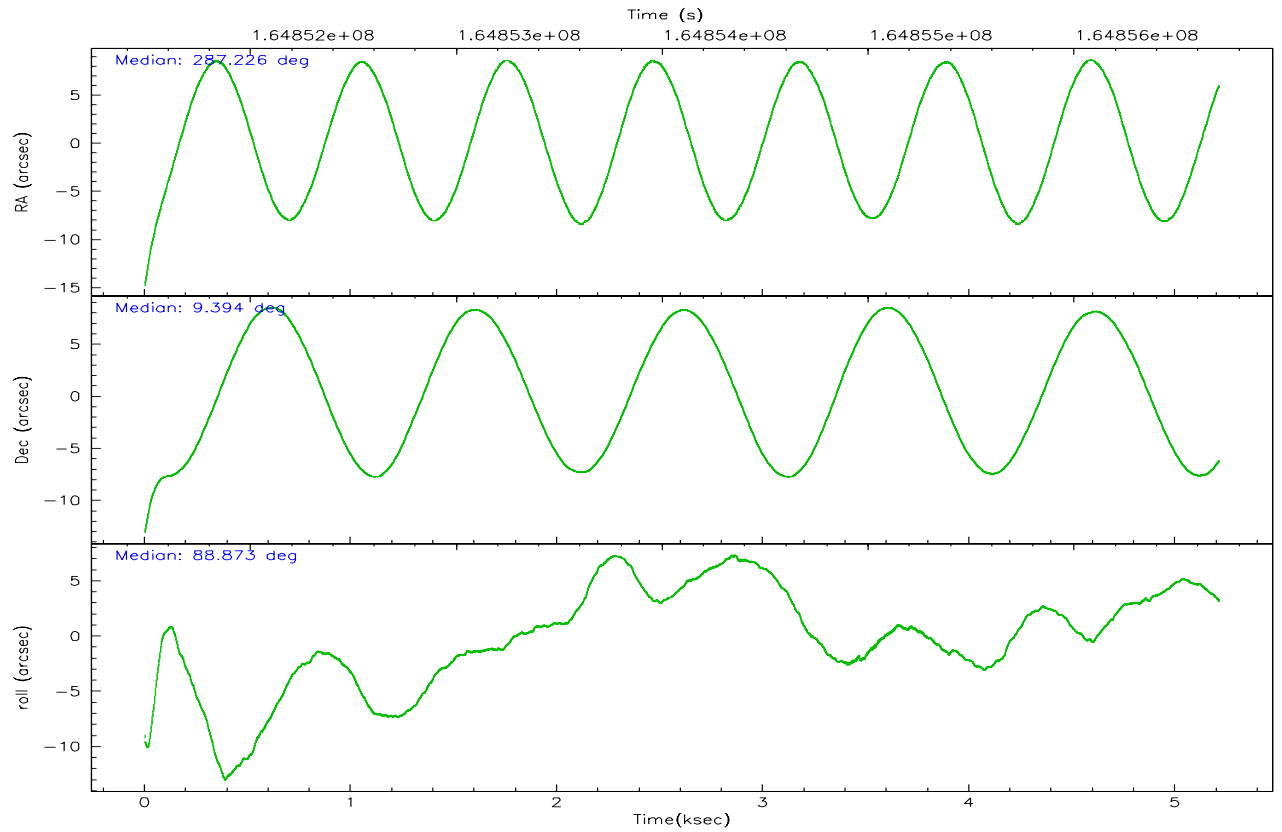
	ccd 7
grade 0 events	2106
	8%
grade 1 events	216
	0%
grade 2 events	3628
	13%
grade 3 events	1534
	5%
grade 4 events	1399
	5%
grade 5 events	1899
	7%
grade 6 events	7433
	28%
grade 7 events	8096
	30%

2.2 Compared Parameters

Parameter	Planned	Actual	Parameter	Planned	Actual
Instrument	ACIS	ACIS	Obspar format version number	6	6
Detector	ACIS-7	ACIS-7	Obspar file type	PREDICTED	ACTUAL
Grating	NONE	NONE	Obspar update status	NONE	UPDATED
Data mode	FAINT	FAINT	On-chip summing requested	N	N
Observation mode	POINTING	POINTING	Subarray requested	1/8	1/8
Pointing RA	287.239725	287.2260192662602	Subarray start row	0	449
Pointing Dec	9.370519	9.394064484934951	Subarray row count	1024	128
Pointing Roll	88.718146	88.87696493611186	Alternating exposures requested	N	N
SIM focus pos (mm)	-0.684267	-0.6828225247311905	Primary exposure time	0.000000	0.4
SIM defocus (mm)	0	0.001444936568705701			
SIM translation stage pos (mm)	-190.132523	-190.1425803651734			
SIM translation stage offset (mm)	0	0.01005778216563158			
Observation start time	164851704.184000	164850724.83969			
Observation start date	2003-03-24T00:07:20	2003-03-23T23:52:04			
Observation end time	164856704.184000	164857477.53997			
Observation end date	2003-03-24T01:30:40	2003-03-24T01:44:37			
Read mode	TIMED	TIMED			

2.3 Aspect



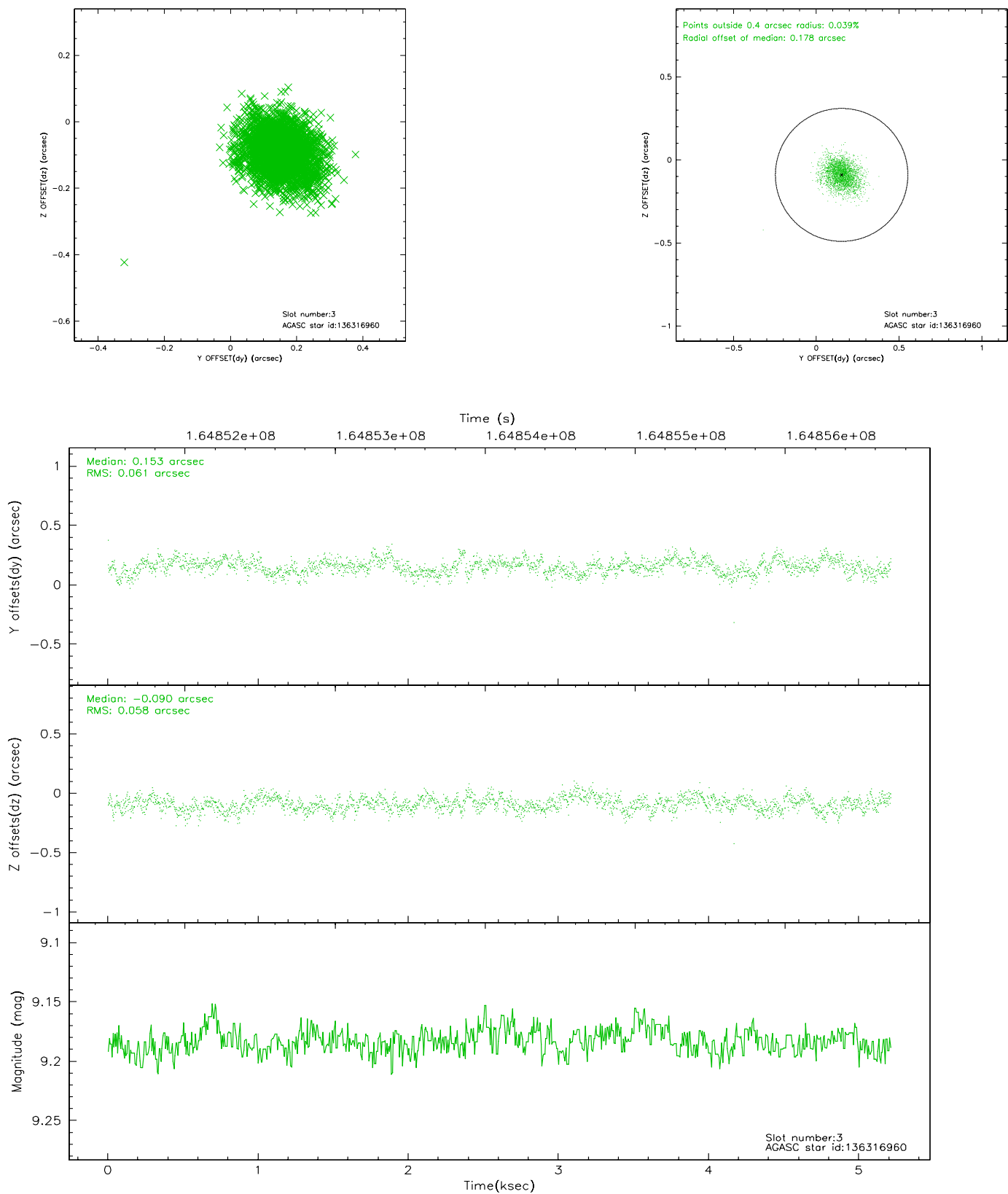


Slot Statistics

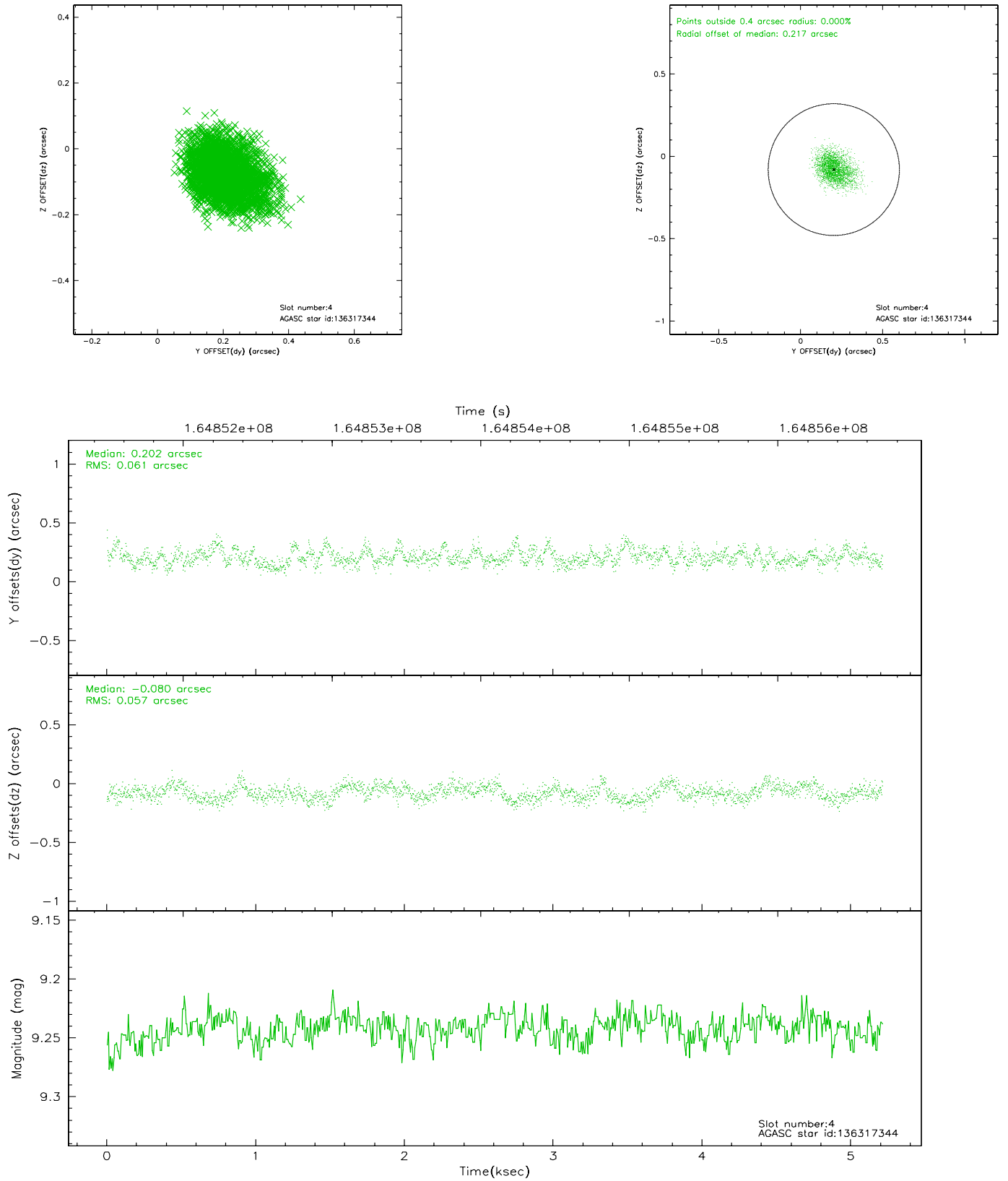
slot	status	id	mag	n_pts	med_dy	med_dz	dr1	dr2	ra	dec	mean_y	mean_z
0	FID	ACIS-S-2	7.11	1272	-0.008	0.014	0.006	0.010	0.000000	0.000000	-755.14	-1729.59
1	FID	ACIS-S-4	7.20	1271	-0.058	0.000	0.005	0.009	0.000000	0.000000	2157.56	177.67
2	FID	ACIS-S-5	7.24	1271	0.035	-0.005	0.006	0.011	0.000000	0.000000	-1806.44	172.67
3	GUIDE	136316960	9.18	2541	0.153	-0.090	0.089	0.143	287.104881	9.133555	-862.80	459.98
4	GUIDE	136317344	9.24	2544	0.202	-0.080	0.089	0.146	287.032148	8.921467	-1632.10	701.96
5	GUIDE	136849008	9.64	2536	-0.309	-0.116	0.104	0.170	287.041390	10.029261	2354.96	756.38
6	GUIDE	136973480	8.46	2544	-0.118	0.141	0.097	0.176	287.924725	9.951688	2150.06	-2380.91
7	GUIDE	136450552	9.24	2543	0.078	0.145	0.098	0.164	287.756963	9.197020	-580.37	-1852.38

2.4 Star Slots

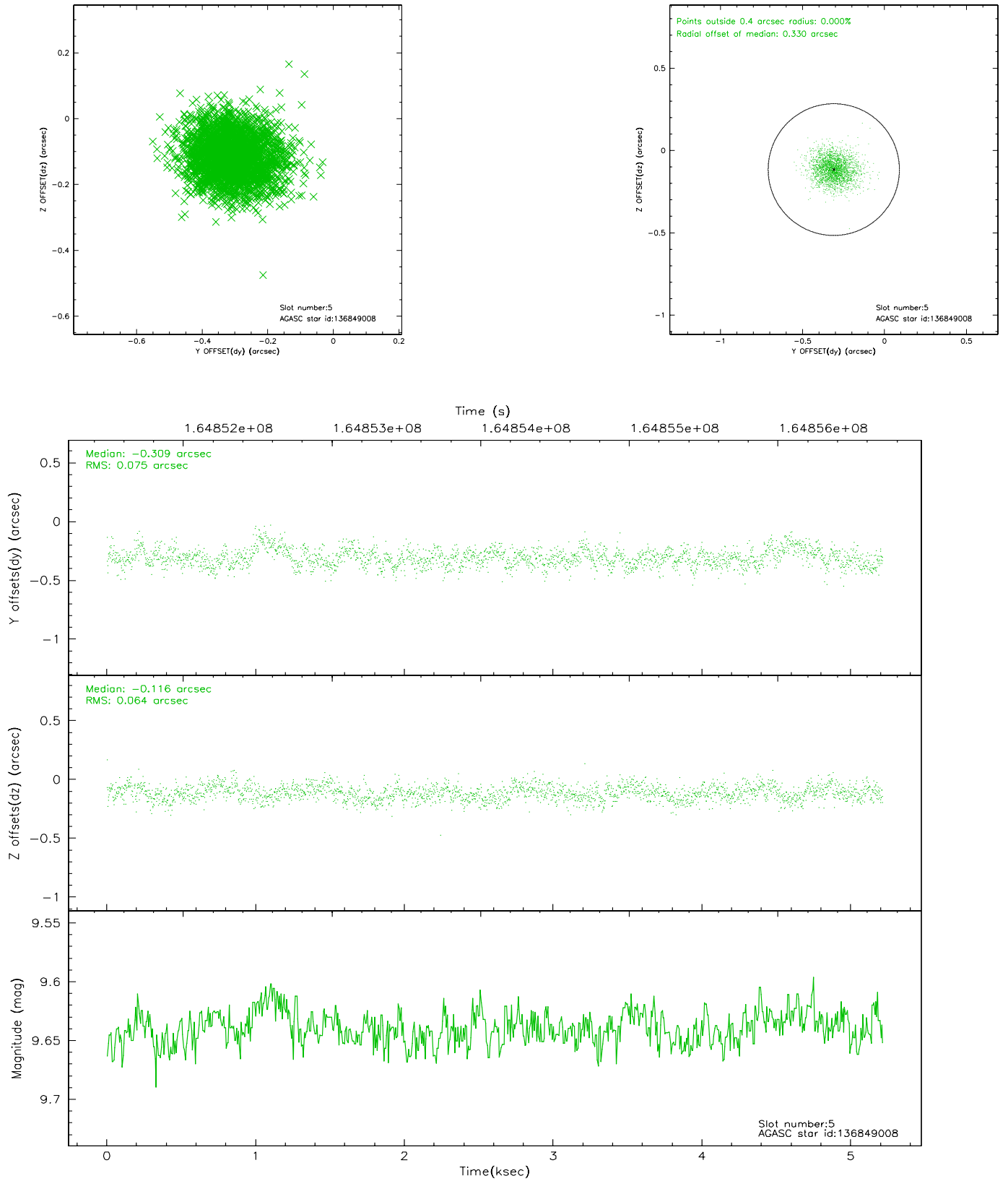
2.4.1 Slot 3



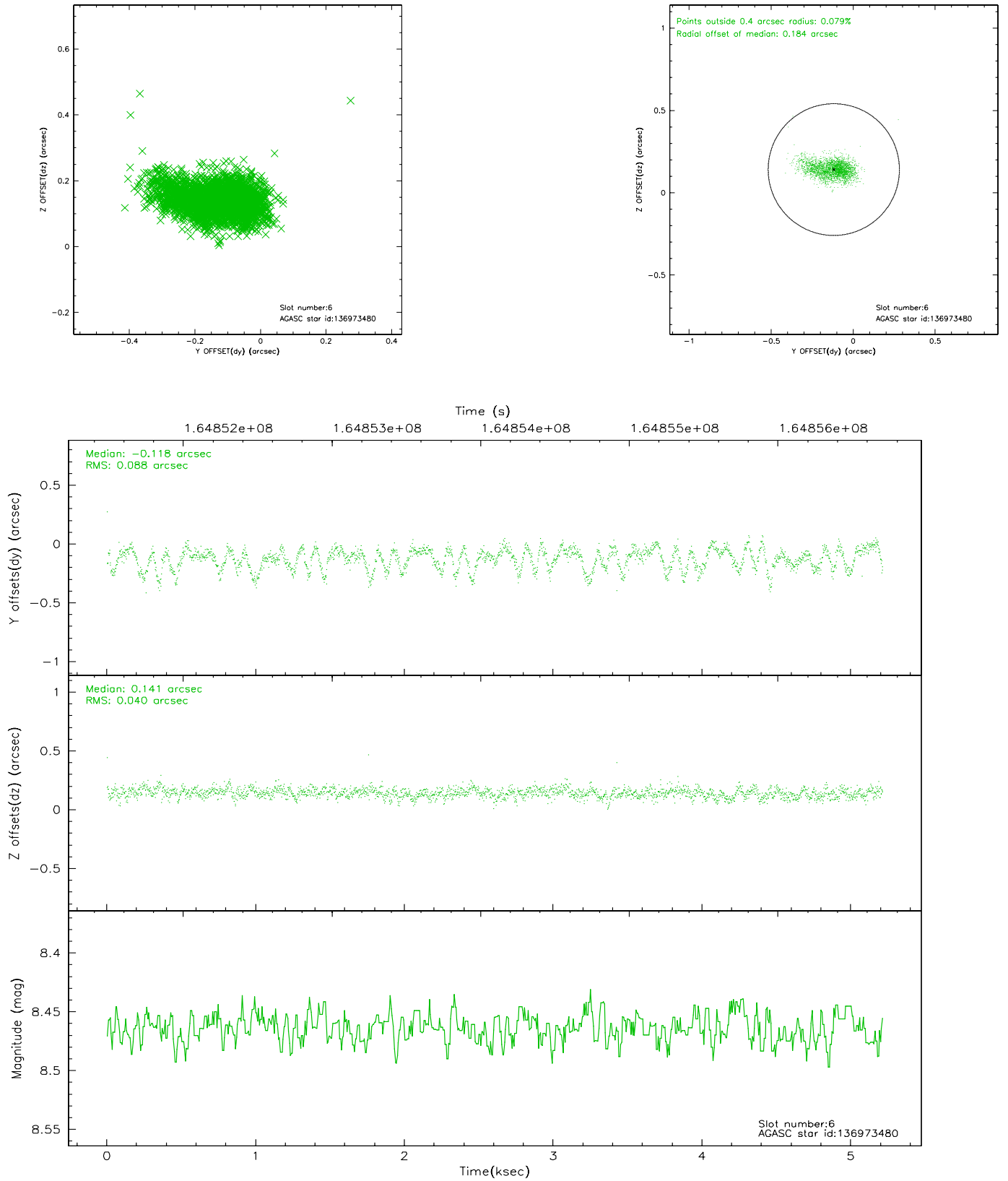
2.4.2 Slot 4



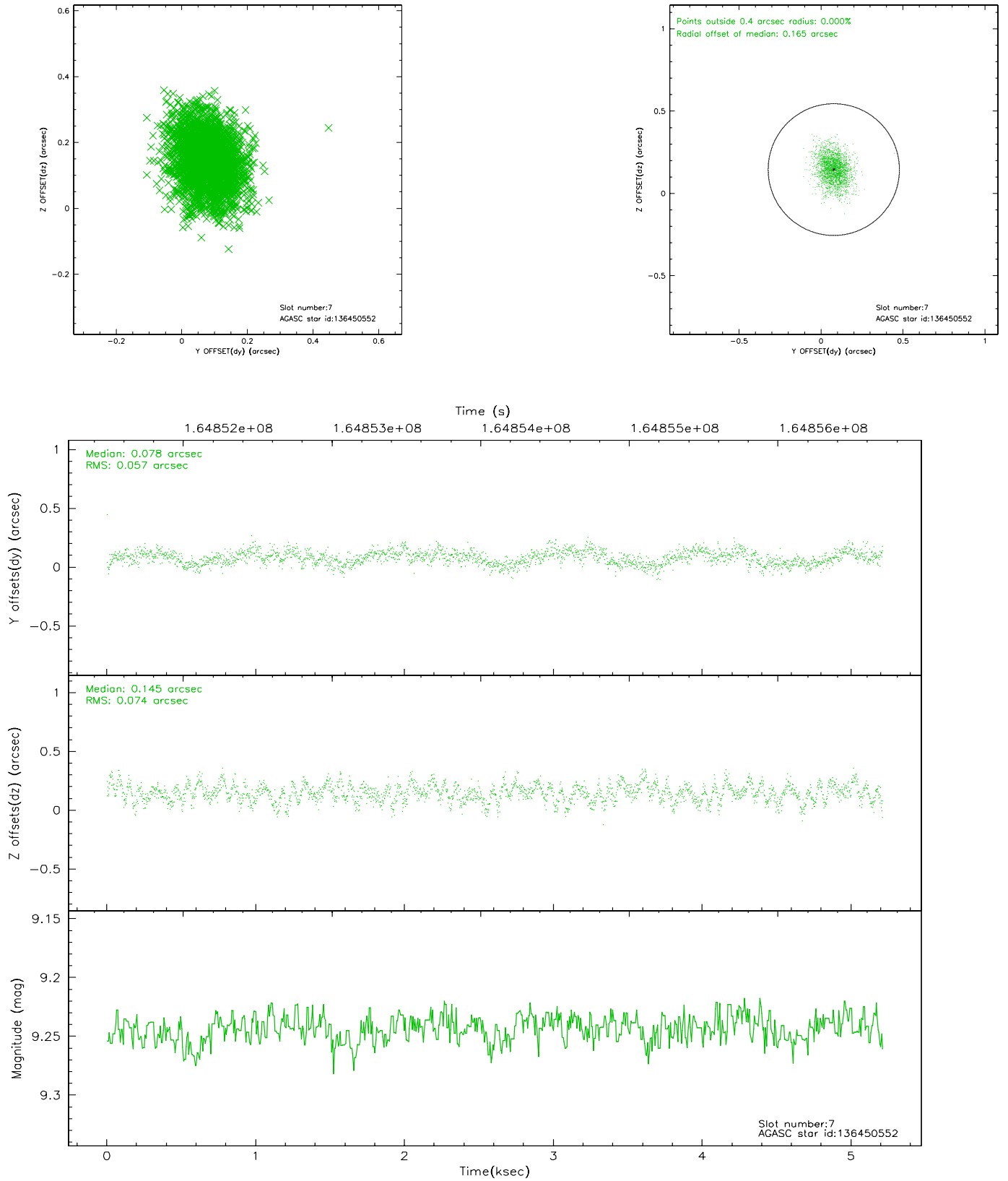
2.4.3 Slot 5



2.4.4 Slot 6

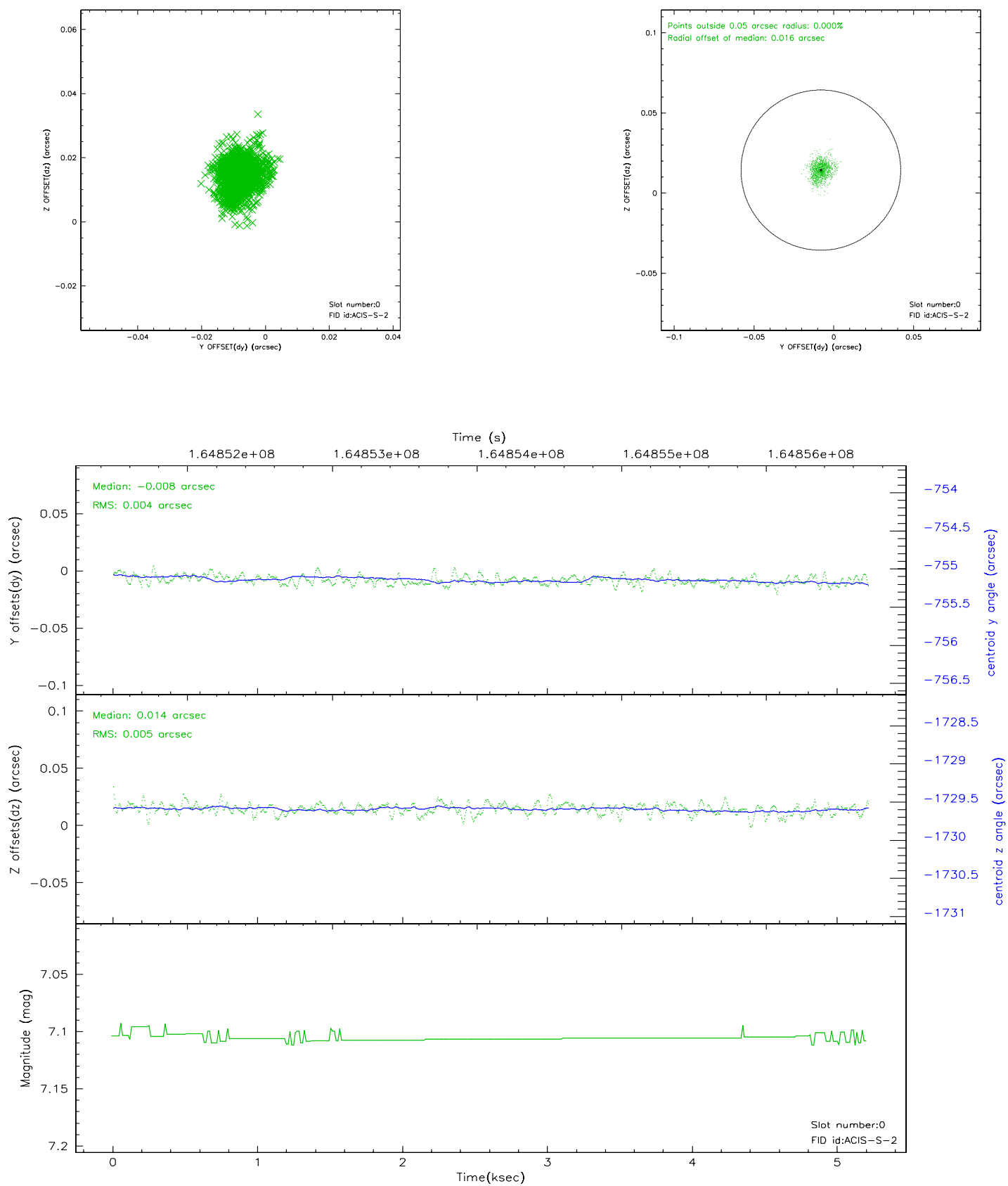


2.4.5 Slot 7

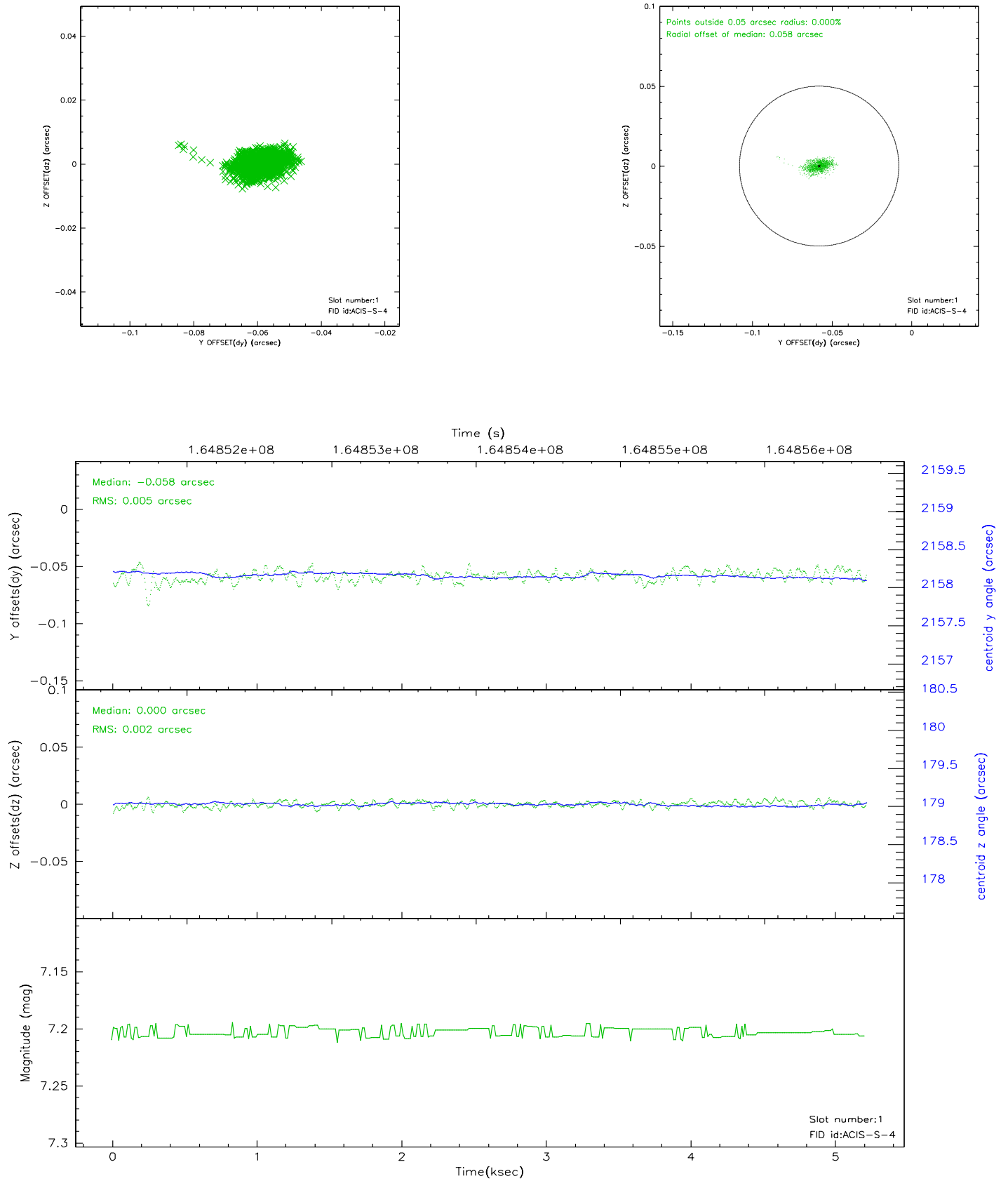


2.5 FID Slots

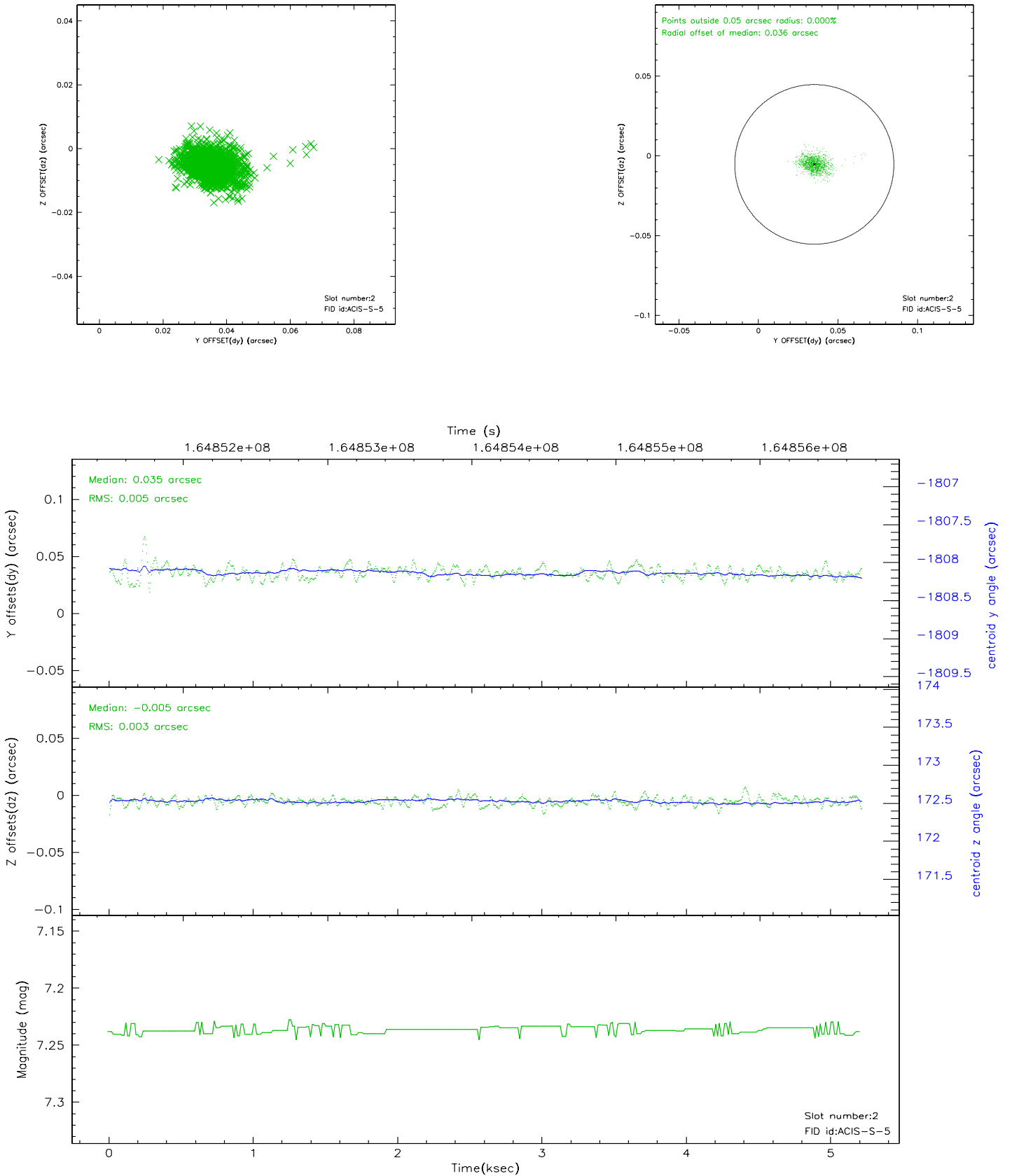
2.5.1 Slot 0



2.5.2 Slot 1



2.5.3 Slot 2



3 Point Sources

A Summary

A.1 Status

V&V Scientist	Beth Sundheim
V&V Date (YYYY-MM-DD)	2006.07.25
V&V Edition	1
V&V Disposition and Status	OK
V&V Charge Time	5.212

A.2 Comments