

V&V Reference Report

L2 ASCDS Version : 8.4.5

Observation 4392 - L2 Version 5
Chandra X-Ray Center

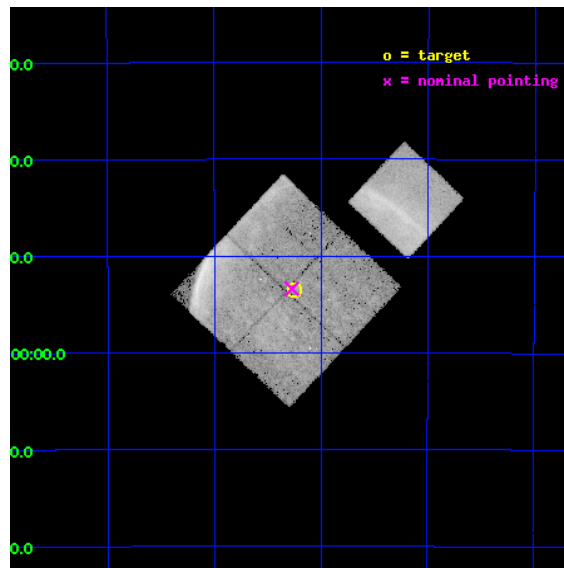
L2 Processing Date : Jan 7 2013

Contents

1	Front	2
2	OBI	3
2.1	OBI	3
2.1.1	Images	3
2.1.2	Bias	3
2.1.3	Parameters	4
2.1.4	Events	4
2.2	Compared Parameters	5
2.3	Aspect	6
2.4	Star Slots	9
2.4.1	Slot 3	9
2.4.2	Slot 4	10
2.4.3	Slot 5	11
2.4.4	Slot 6	12
2.4.5	Slot 7	13
2.5	FID Slots	14
2.5.1	Slot 0	14
2.5.2	Slot 1	15
A	Summary	16
A.1	Status	16
A.2	Comments	16

1 Front

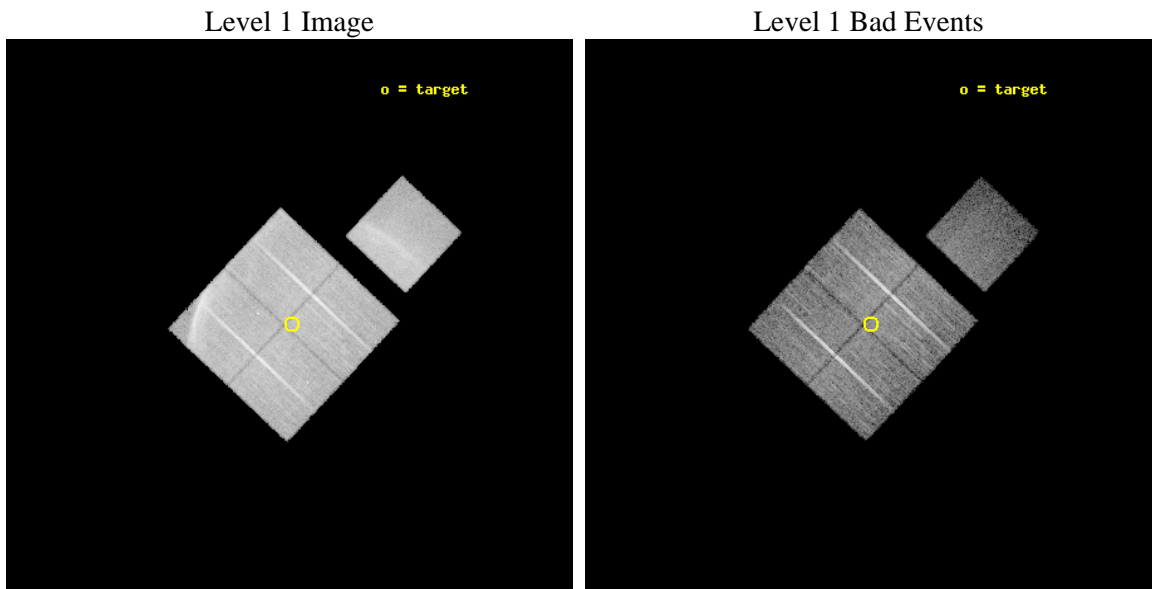
seq_num	500317	Sequence number
obs_id	4392	Observation id
title	STUDYING HIGH MACH NUMBER SHOCKS IN YOUNG SUPERNOVA REMNANTS WITH CHANDRA	Proposal title
observer	Prof. John Hughes	Principal investigator
object	SN1006	Source name
dtcycle	0	
cycle	P	events from which exps? Prim/Second/Both
ra_targ	225.8125	Observer's specified target RA [deg]
dec_targ	-41.8917	Observer's specified target Dec [deg]
ra_nom	225.81834330266	Nominal RA [deg]
dec_nom	-41.890095295723	Nominal Dec [deg]
roll_nom	43.212589567509	Nominal Roll [deg]
revision	5	Processing version of data
ontime	19845.035750598	Sum of GTIs [s]
livetime	19585.745748813	Livetime [s]
ontime0	19844.912630588	Sum of GTIs [s]
ontime1	19844.953670591	Sum of GTIs [s]
ontime2	19841.853710443	Sum of GTIs [s]
ontime3	19845.035750598	Sum of GTIs [s]
ontime7	19845.076770663	Sum of GTIs [s]
l2events	212966	Number of level 2 events



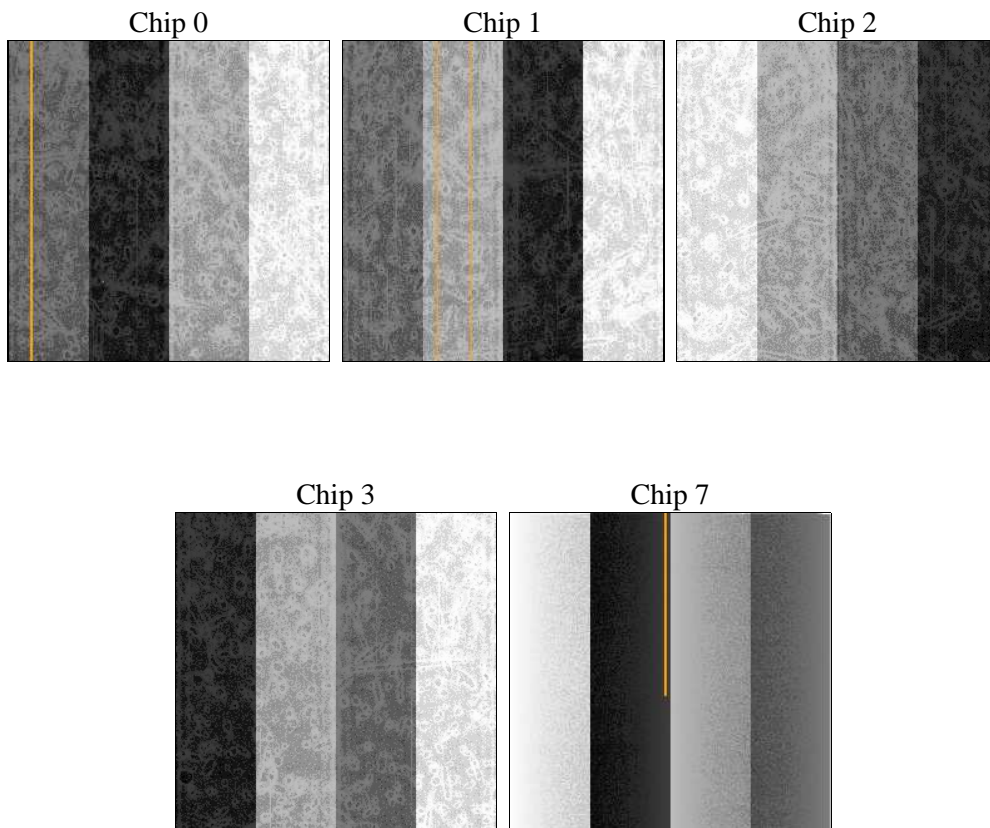
2 OBI

2.1 OBI

2.1.1 Images



2.1.2 Bias



2.1.3 Parameters

obi_num	0	Obi number	sched_exp_time	20074.000000	[s] Scheduled observation exposure time
ascdsver	8.5.1.1	Processing system revision	ontime	19845.035750598	Sum of GTIs [s]
caldbver	4.5.5	 	ontime0	19844.912630588	Sum of GTIs [s]
date	2013-01-07T22:04:40	Date and time of file creation	ontime1	19844.953670591	Sum of GTIs [s]
revision	5	Processing version of data	ontime2	19841.853710443	Sum of GTIs [s]
			ontime3	19845.035750598	Sum of GTIs [s]
			ontime7	19845.076770663	Sum of GTIs [s]
			l1events	613178	Number of level 1 events

2.1.4 Events

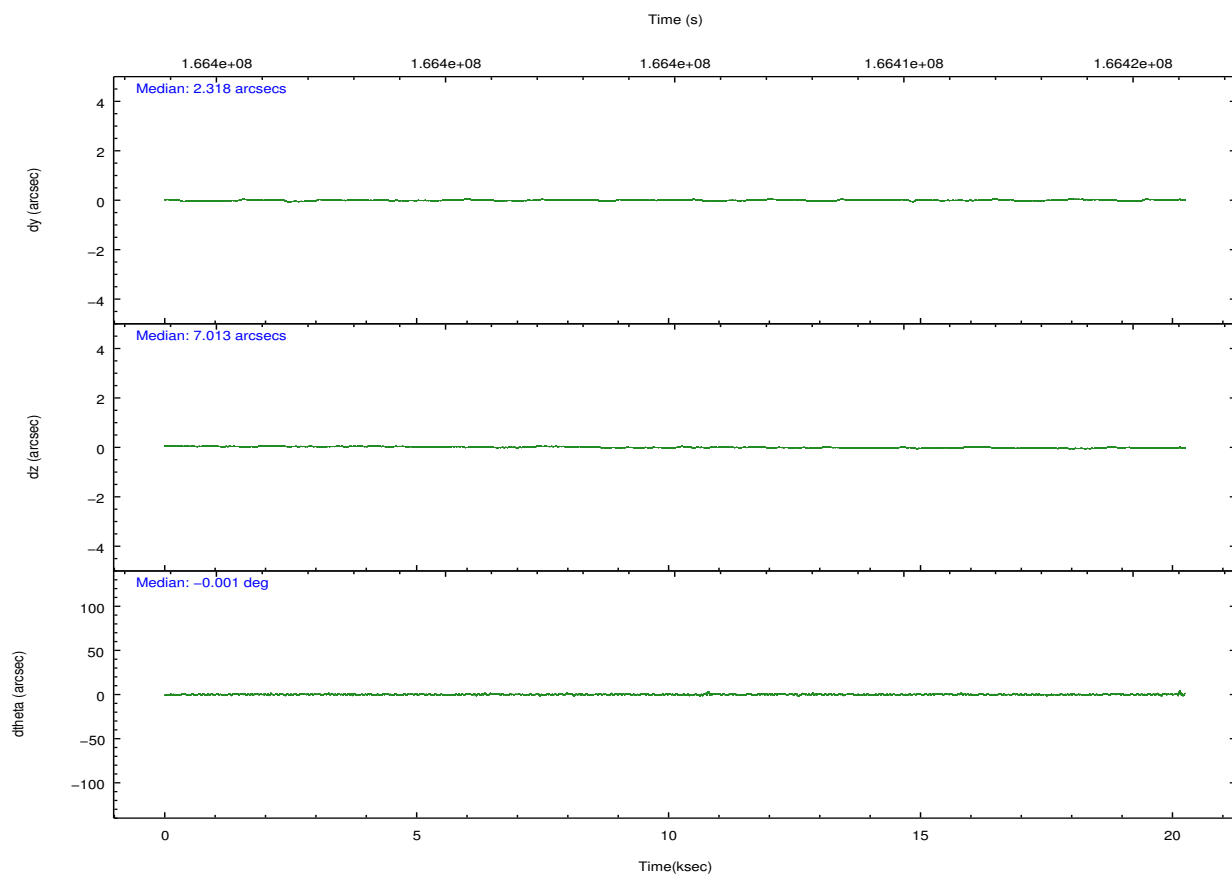
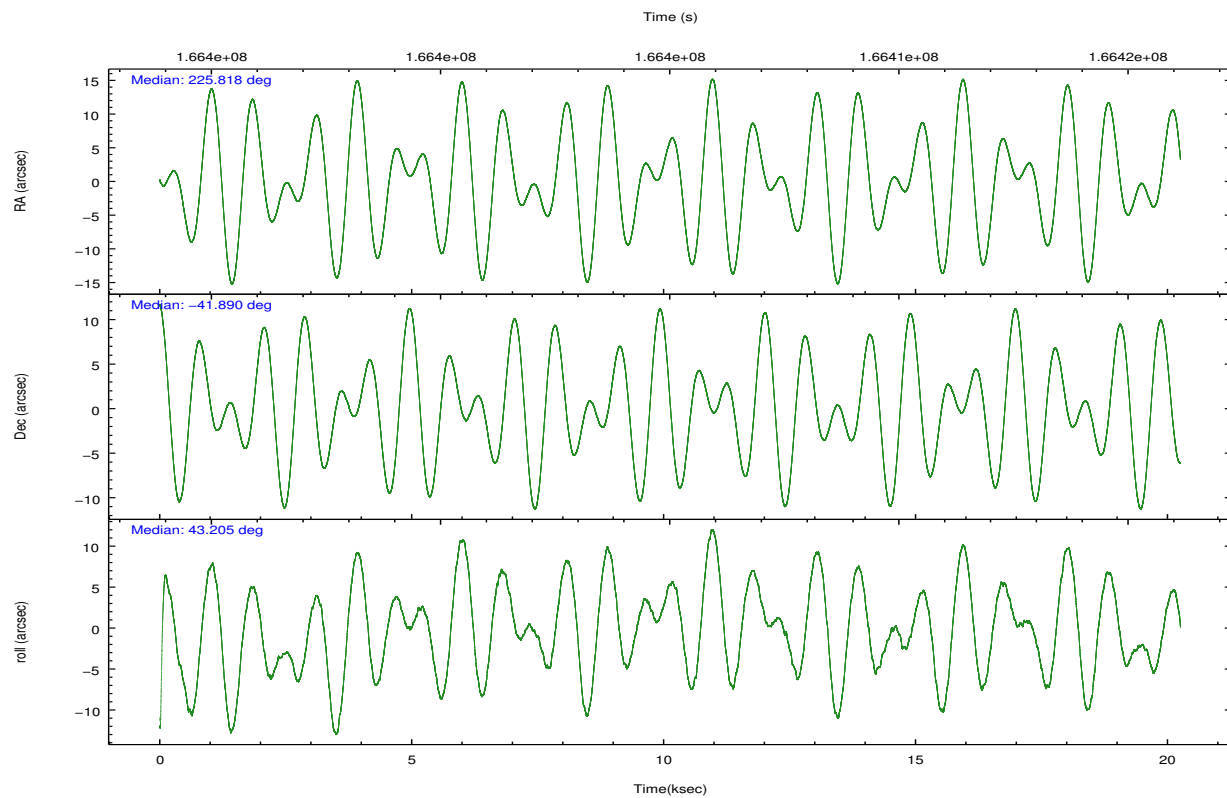
	ccd 0	ccd 1	ccd 2	ccd 3	ccd 7
level 1 events	142419	111256	127859	112214	119430
rejected events	77863	79932	92163	88303	47303
rejected %	54%	71%	72%	78%	39%

	ccd 0	ccd 1	ccd 2	ccd 3	ccd 7
grade 0 events	50928	22841	26662	17090	16772
	35%	20%	20%	15%	14%
grade 1 events	191	111	133	98	72
	0%	0%	0%	0%	0%
grade 2 events	6724	3525	4103	2744	16230
	4%	3%	3%	2%	13%
grade 3 events	2307	1425	1620	1234	7190
	1%	1%	1%	1%	6%
grade 4 events	2206	1495	1506	1155	7112
	1%	1%	1%	1%	5%
grade 5 events	2966	3168	2755	3362	9961
	2%	2%	2%	2%	8%
grade 6 events	2406	2046	1821	1696	24853
	1%	1%	1%	1%	20%
grade 7 events	74691	76645	89259	84835	37240
	52%	68%	69%	75%	31%

2.2 Compared Parameters

Parameter	Planned	Actual	Parameter	Planned	Actual
Instrument	ACIS	ACIS	Obspar format version number	7	7
Detector	ACIS-01237	ACIS-01237	Obspar file type	PREDICTED	ACTUAL
Grating	NONE	NONE	Obspar update status	NONE	UPDATED
Data mode	VFAINT	VFAINT	Number of optional ACIS chips dropped	0	0
Observation mode	POINTING	POINTING	On-chip summing requested	N	N
[deg] Pointing RA	225.807854	225.8183433026572	Subarray requested	NONE	NONE
[deg] Pointing Dec	-41.916352	-41.89009529572333	Alternating exposures requested	N	N
[deg] Pointing Roll	42.996897	43.21258956750889	[s] Primary exposure time	0.000000	3.1
[mm] SIM focus pos	-0.782348	-0.7809083437167272			
[mm] SIM defocus	0	0.001439871863259334			
[mm] SIM translation stage pos	-233.592463	-233.5874344608287			
[mm] SIM translation stage offset	0	-0.005018542100998502			
[s] Observation start time (MET)	166395065.184000	166394689.06731			
Observation start date	2003-04-10T20:50:01	2003-04-10T20:44:49			
[s] Observation end time (MET)	166415139.184000	166415273.11818			
Observation end date	2003-04-11T02:24:35	2003-04-11T02:27:53			
Read mode	TIMED	TIMED			

2.3 Aspect

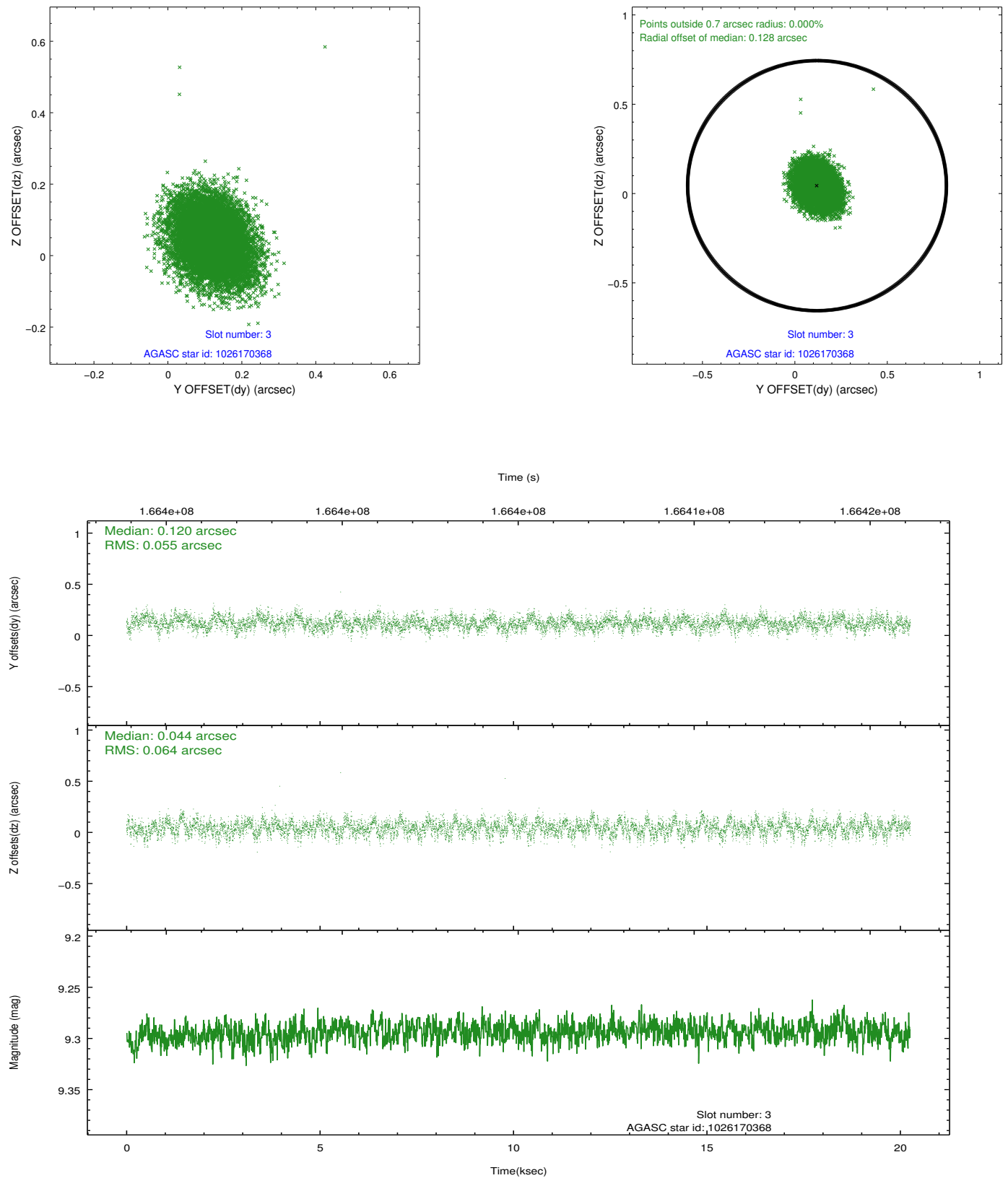


Slot Statistics

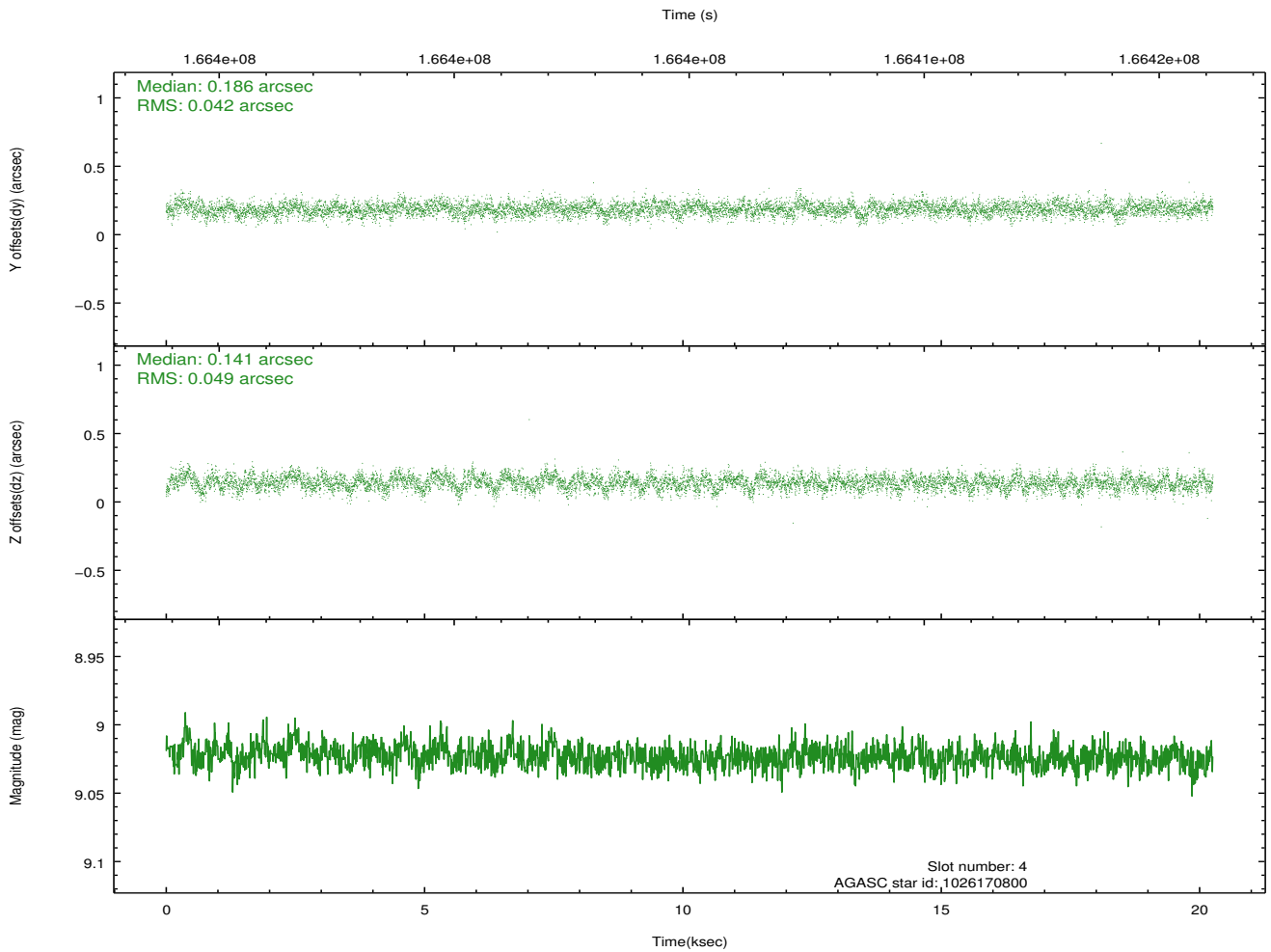
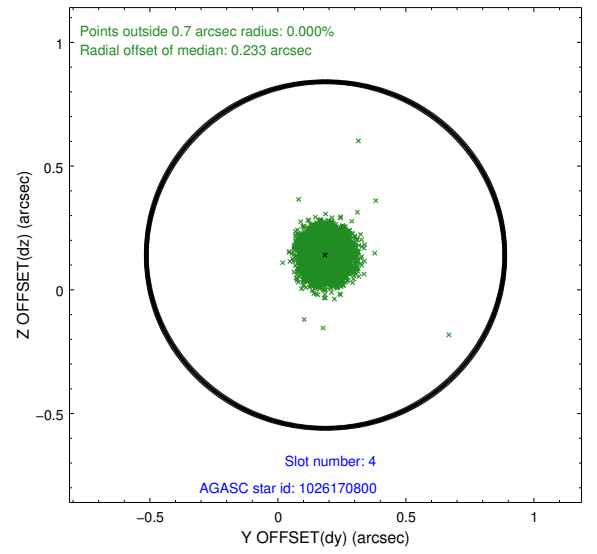
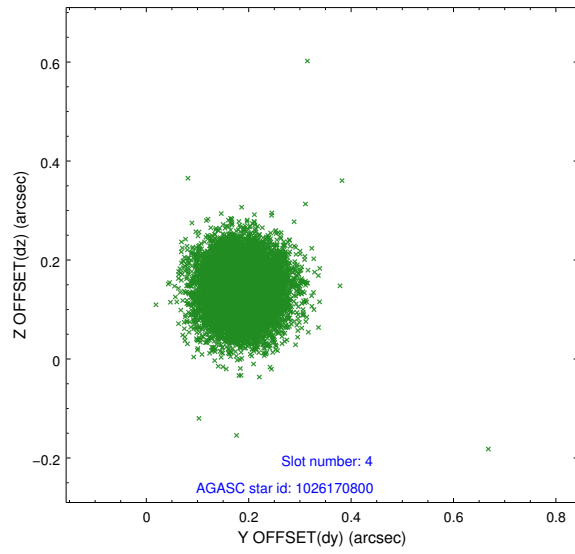
slot	status	id	mag	n_pts	med_dy	med_dz	dr1	dr2	ra	dec	mean_y	mean_z
0	FID	ACIS-I-1	7.25	4942	0.009	-0.002	0.005	0.009	0.000000	0.000000	937.49	-830.43
1	FID	ACIS-I-5	7.24	4942	-0.070	0.052	0.005	0.009	0.000000	0.000000	-1810.56	1067.07
2	OMITTED		0.00	0	0.000	0.000	0.000	0.000	0.000000	0.000000	0.00	0.00
3	GUIDE	1026170368	9.29	9884	0.120	0.044	0.089	0.146	225.763429	-42.291155	-1006.17	-906.12
4	GUIDE	1026170800	9.02	9881	0.186	0.141	0.067	0.110	225.400024	-42.381702	-1937.04	-487.61
5	GUIDE	1026183784	9.18	9877	-0.122	0.018	0.074	0.124	226.363370	-41.841537	1270.17	-822.24
6	GUIDE	1026185256	9.31	9878	0.011	0.032	0.079	0.130	226.095983	-42.018643	312.15	-795.62
7	GUIDE	1026188856	9.32	9876	-0.196	-0.234	0.089	0.138	225.548004	-41.307204	980.68	2082.36

2.4 Star Slots

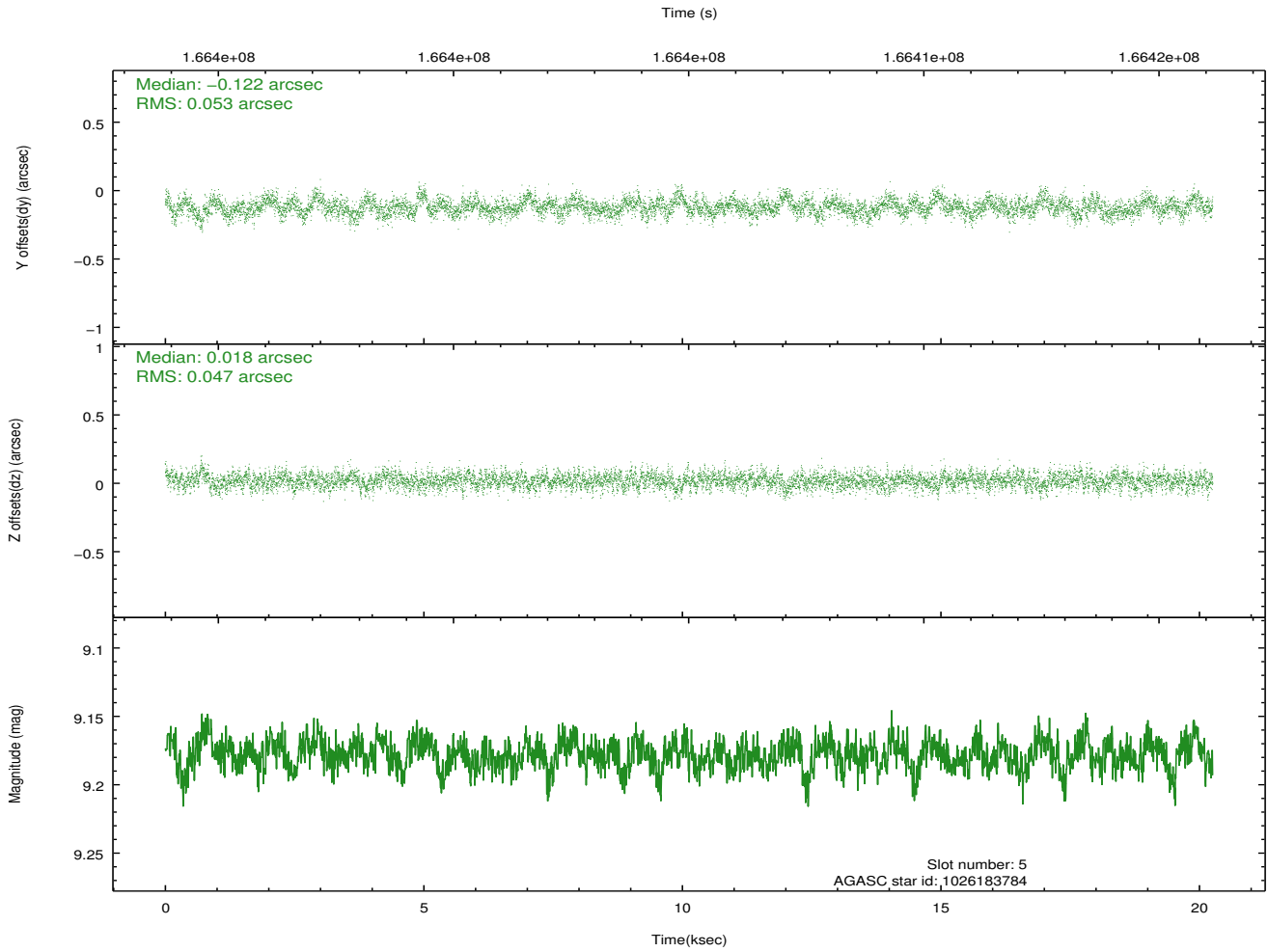
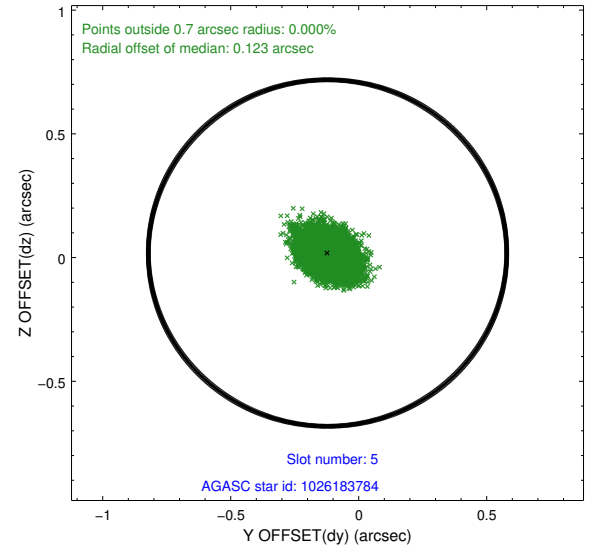
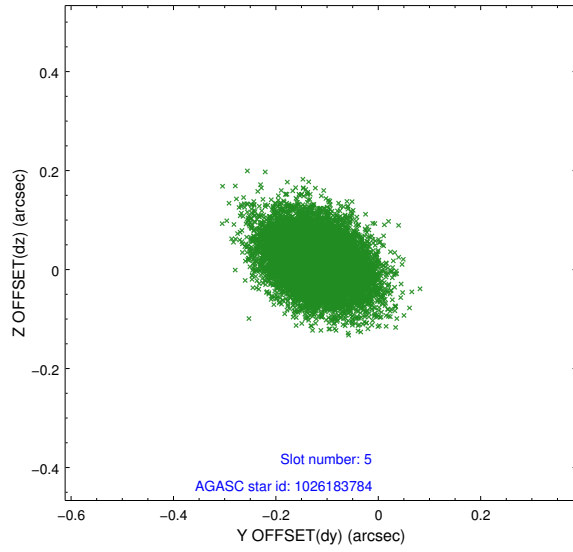
2.4.1 Slot 3



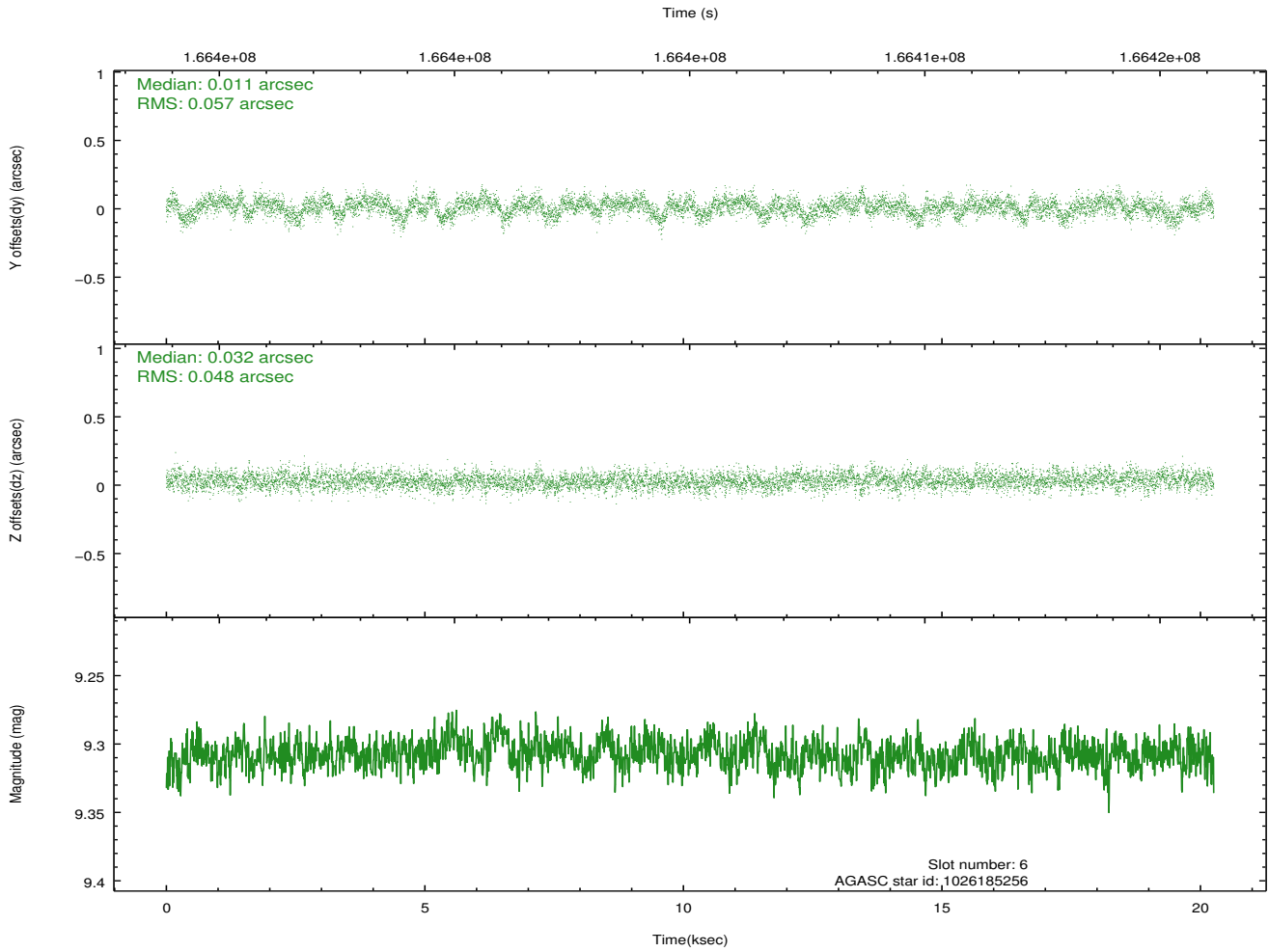
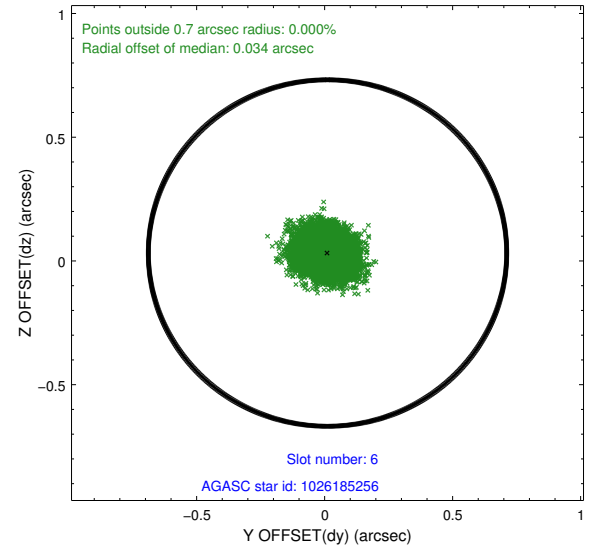
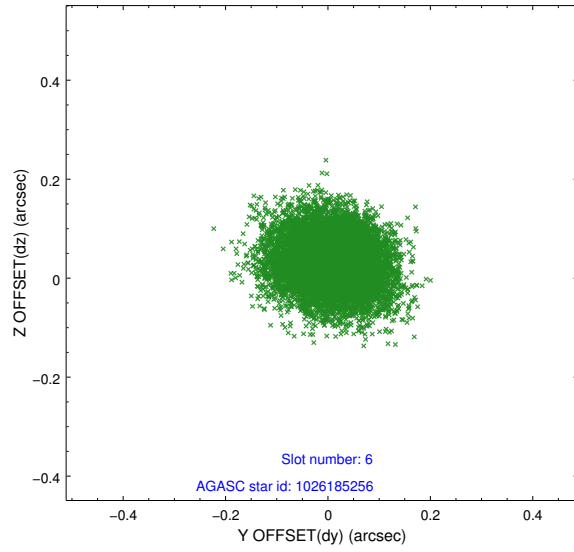
2.4.2 Slot 4



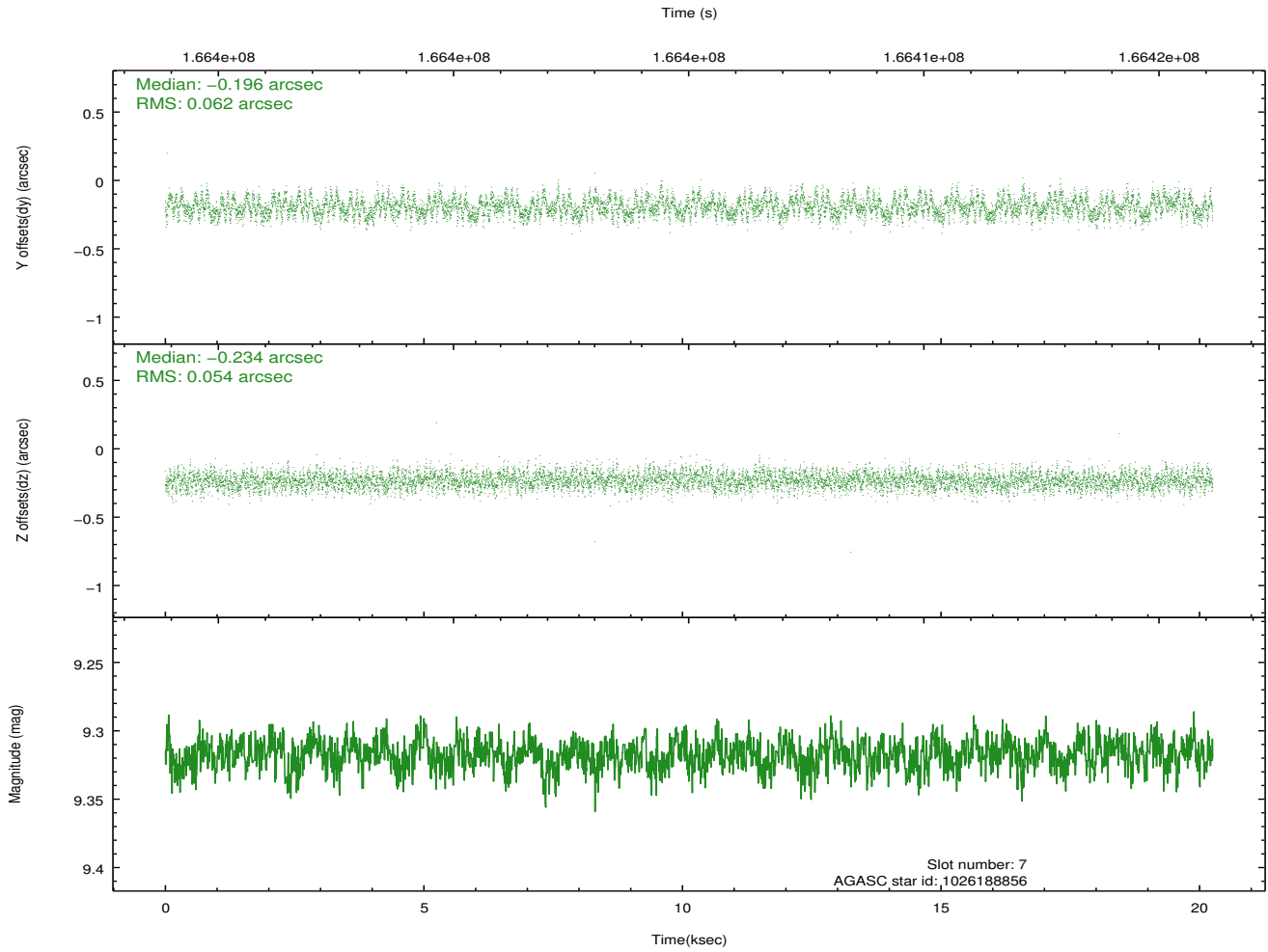
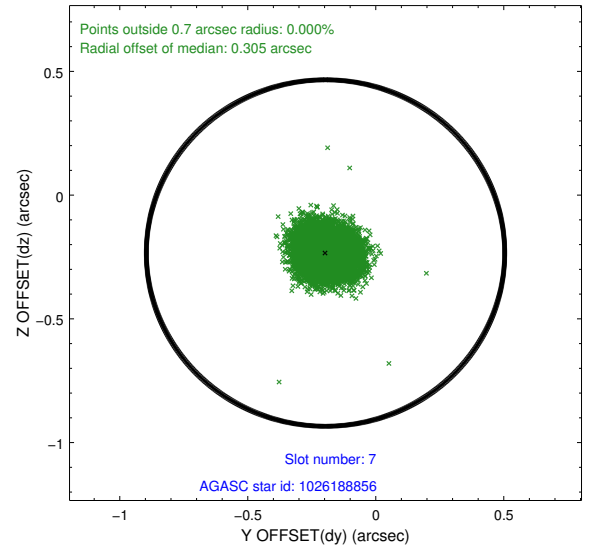
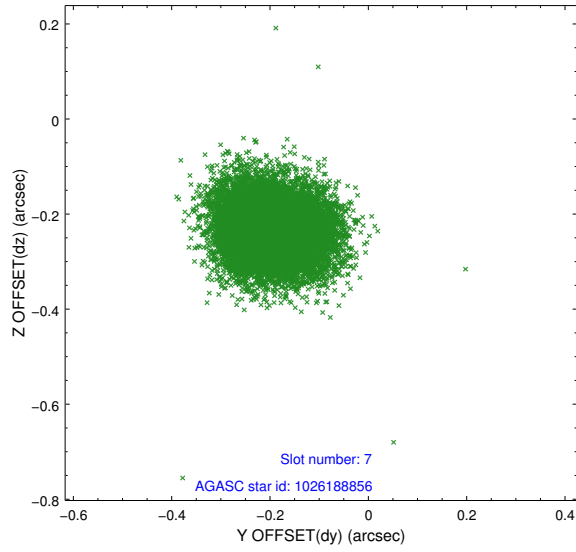
2.4.3 Slot 5



2.4.4 Slot 6

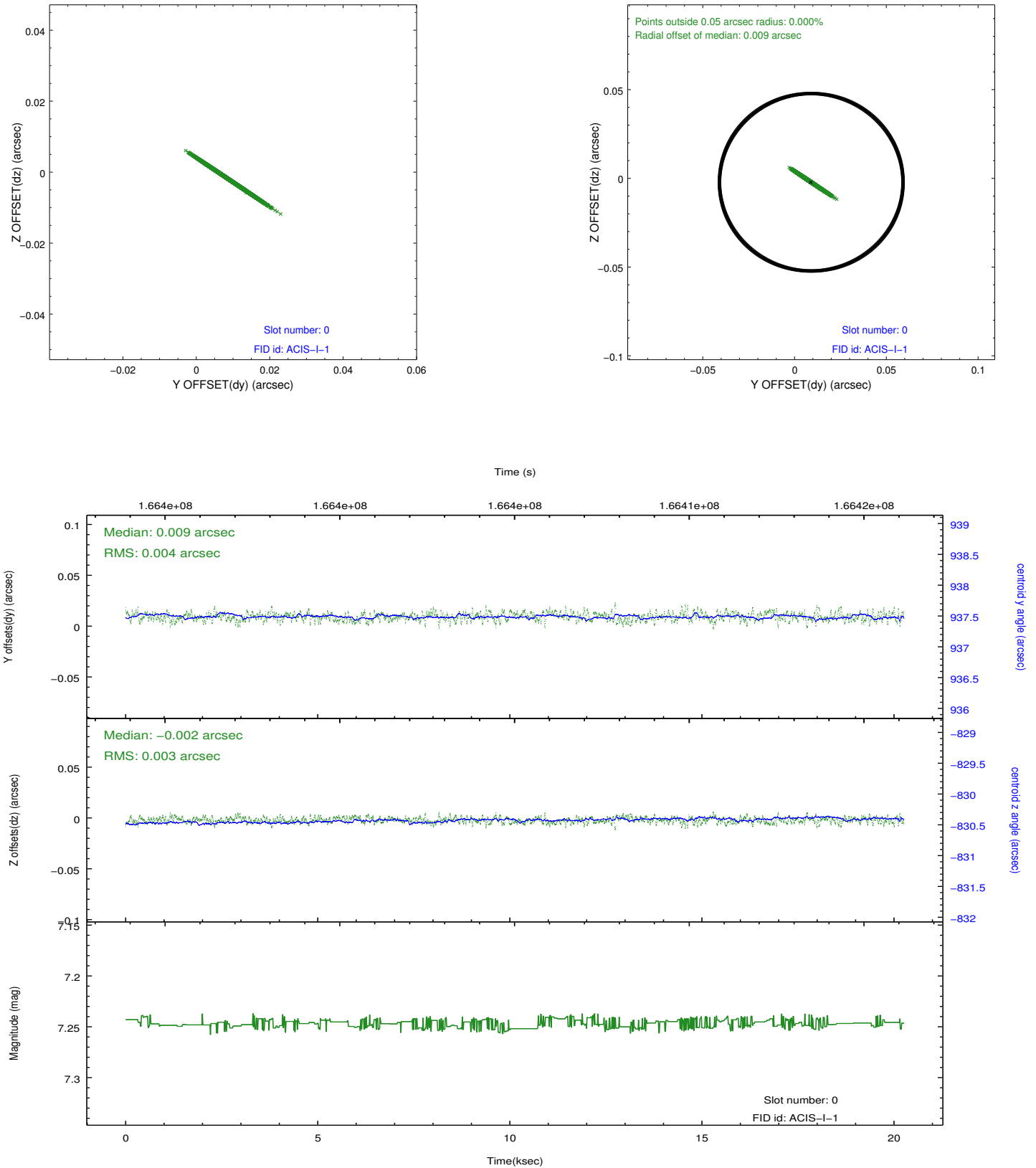


2.4.5 Slot 7

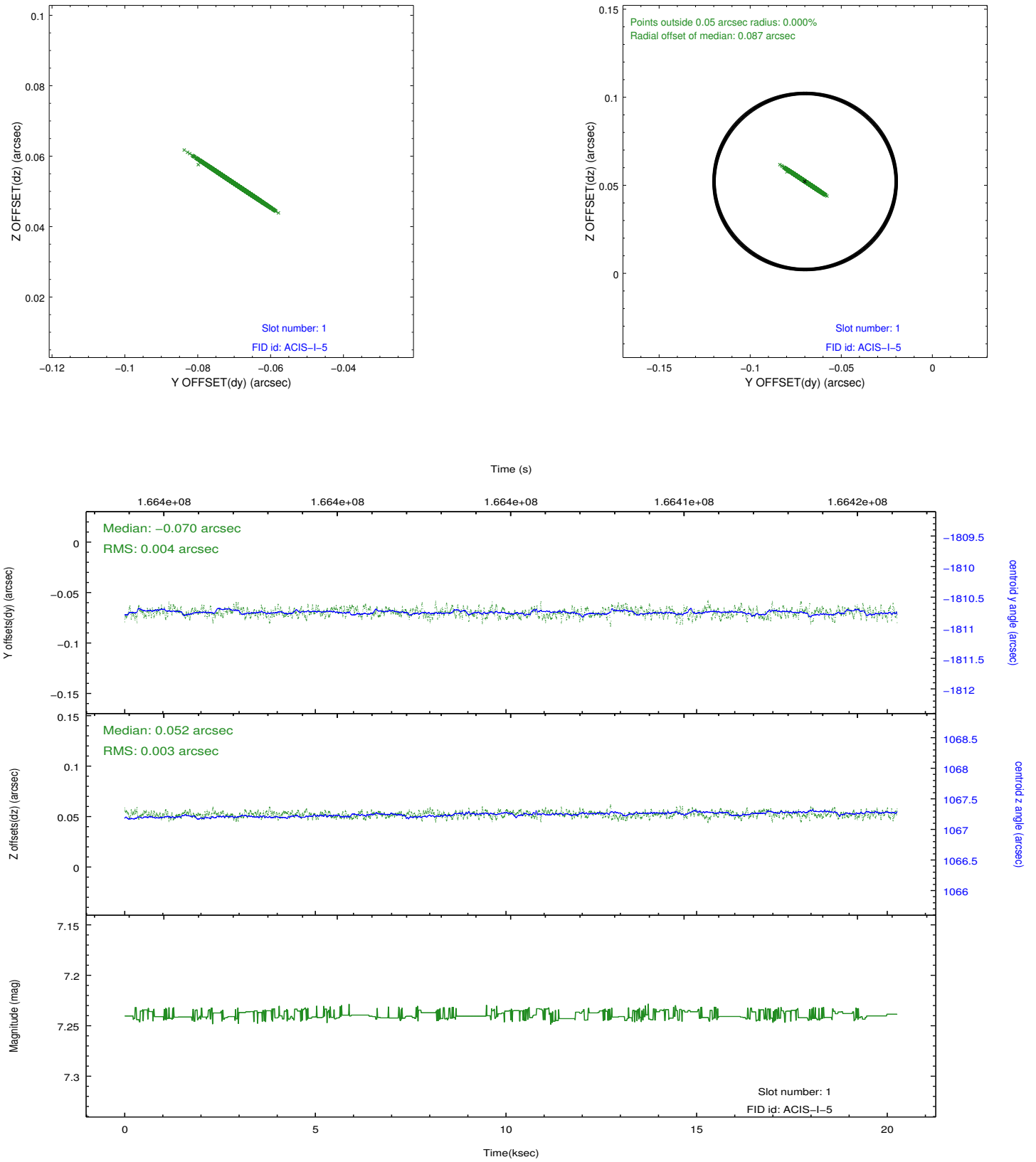


2.5 FID Slots

2.5.1 Slot 0



2.5.2 Slot 1



A Summary

A.1 Status

V&V Scientist	Beth Sundheim
V&V Date (YYYY-MM-DD)	2013.01.10
V&V Edition	1
V&V Disposition and Status	OK
V&V Charge Time	19.846

A.2 Comments

The fid light in slot 2 was removed from the aspect solution due to poor data quality. The aspect solution is improved by the removal of this fid light from the solution.