

V&V Reference Report

L2 ASCDS Version : 7.6.9

Observation 4372 - L2 Version 001
Chandra X-Ray Center

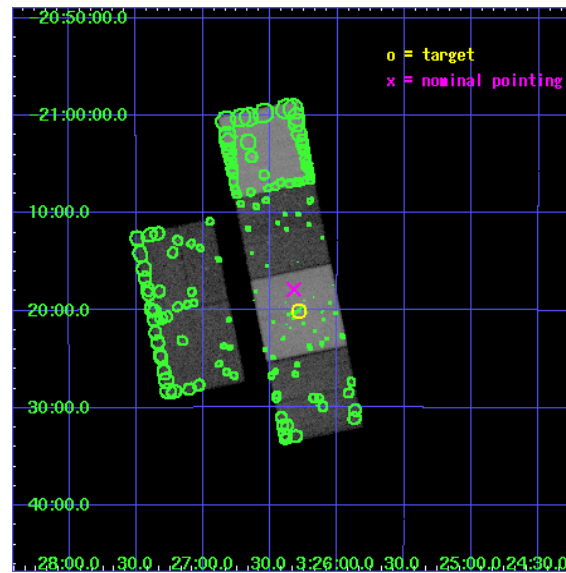
L2 Processing Date : Oct 4 2006

Contents

1	Front	2
2	OBI	3
2.1	OBI	3
2.1.1	Images	3
2.1.2	Bias	3
2.1.3	Parameters	4
2.1.4	Events	4
2.2	Compared Parameters	5
2.3	Aspect	6
2.4	Star Slots	9
2.4.1	Slot 3	9
2.4.2	Slot 4	10
2.4.3	Slot 5	11
2.4.4	Slot 6	12
2.4.5	Slot 7	13
2.5	FID Slots	14
2.5.1	Slot 0	14
2.5.2	Slot 1	15
2.5.3	Slot 2	16
3	Point Sources	17
A	Summary	18
A.1	Status	18
A.2	Comments	18

1 Front

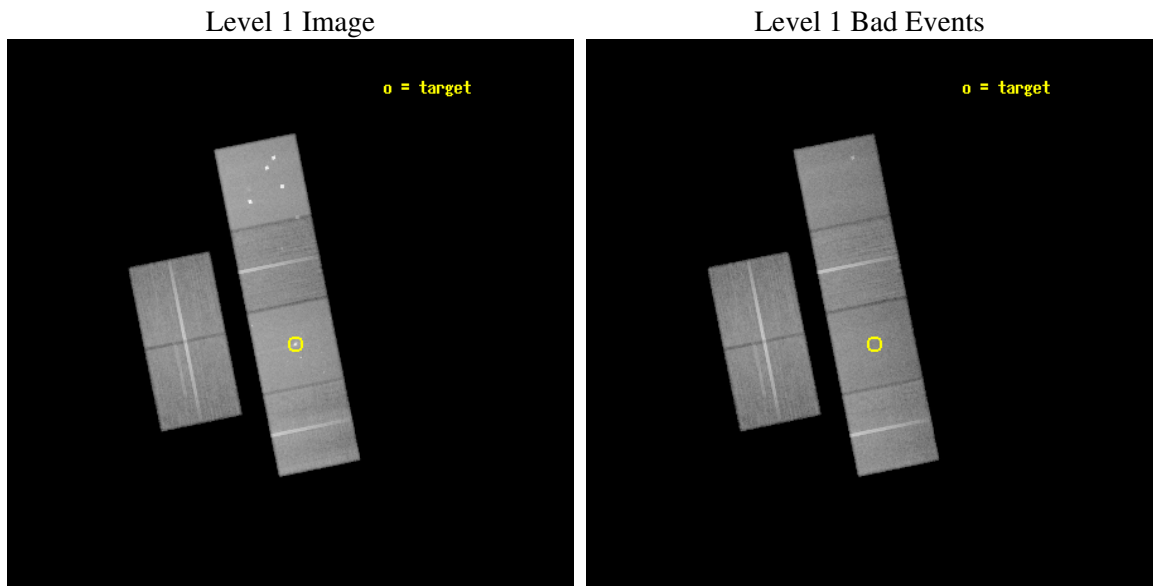
seq_num	600252
obs_id	4372
title	THE SHAPES OF DARK MATTER HALOS
observer	Prof. David Buote
object	NGC 1332
dtcycle	0
cycle	P
ra_targ	51.570833
dec_targ	-21.335833
ra_nom	51.581018356269
dec_nom	-21.297922481328
roll_nom	78.560335161714
revision	2
ontime	57260.799786687
livetime	56535.729061474
ontime2	57257.558806449
ontime3	57260.799786687
ontime5	57260.799786687
ontime6	57260.799786687
ontime7	57260.799786687
ontime8	57260.799786687
l2events	566651



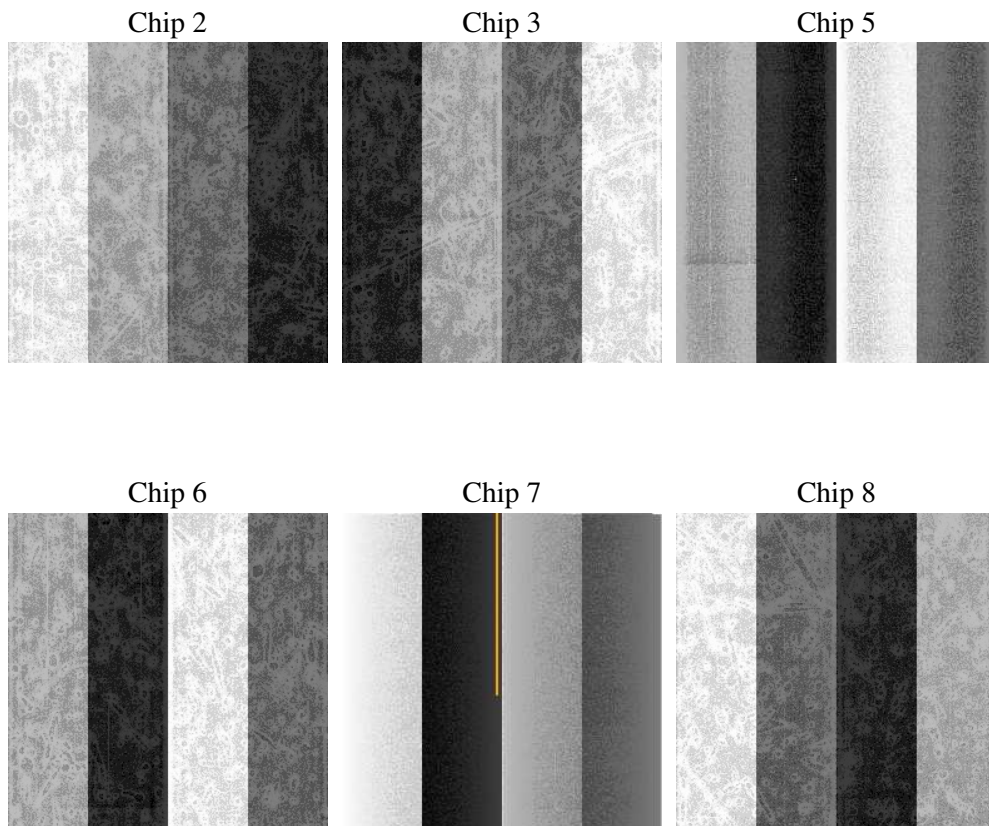
2 OBI

2.1 OBI

2.1.1 Images



2.1.2 Bias



2.1.3 Parameters

obi_num	0
ascdsver	7.6.9
caldsver	3.2.3
date	2006-10-04T16:58:13
revision	2

sched_exp_time	57300.000000
ontime	57265.325309187
ontime2	57262.084309042
ontime3	57265.325289279
ontime5	57265.325309187
ontime6	57265.325309187
ontime7	57265.325309187
ontime8	57265.325289279
l1events	2559115

2.1.4 Events

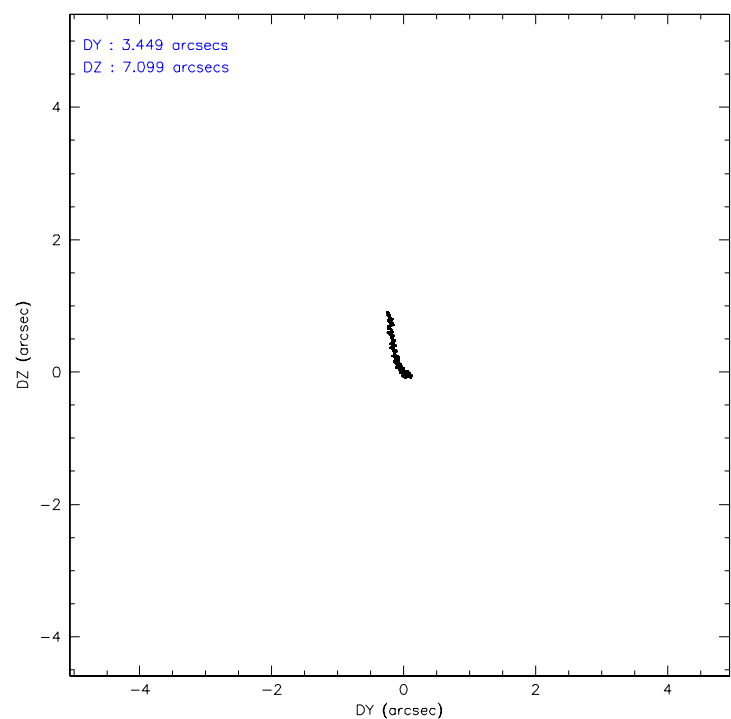
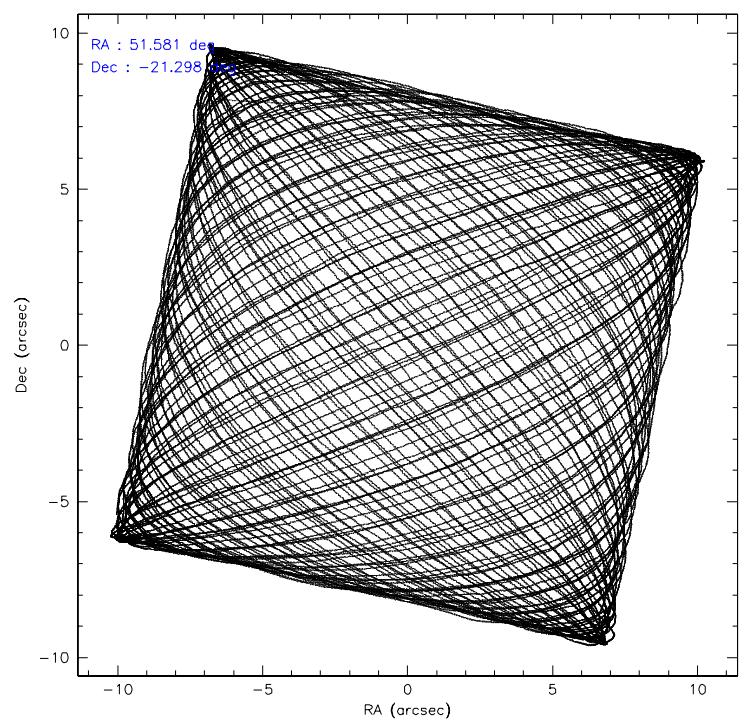
	ccd 2	ccd 3	ccd 5	ccd 6	ccd 7	ccd 8
level 1 events	365546	345983	546760	362294	492896	445636
rejected events	324127	305520	289670	319016	293410	354222
rejected %	88%	88%	52%	88%	59%	79%

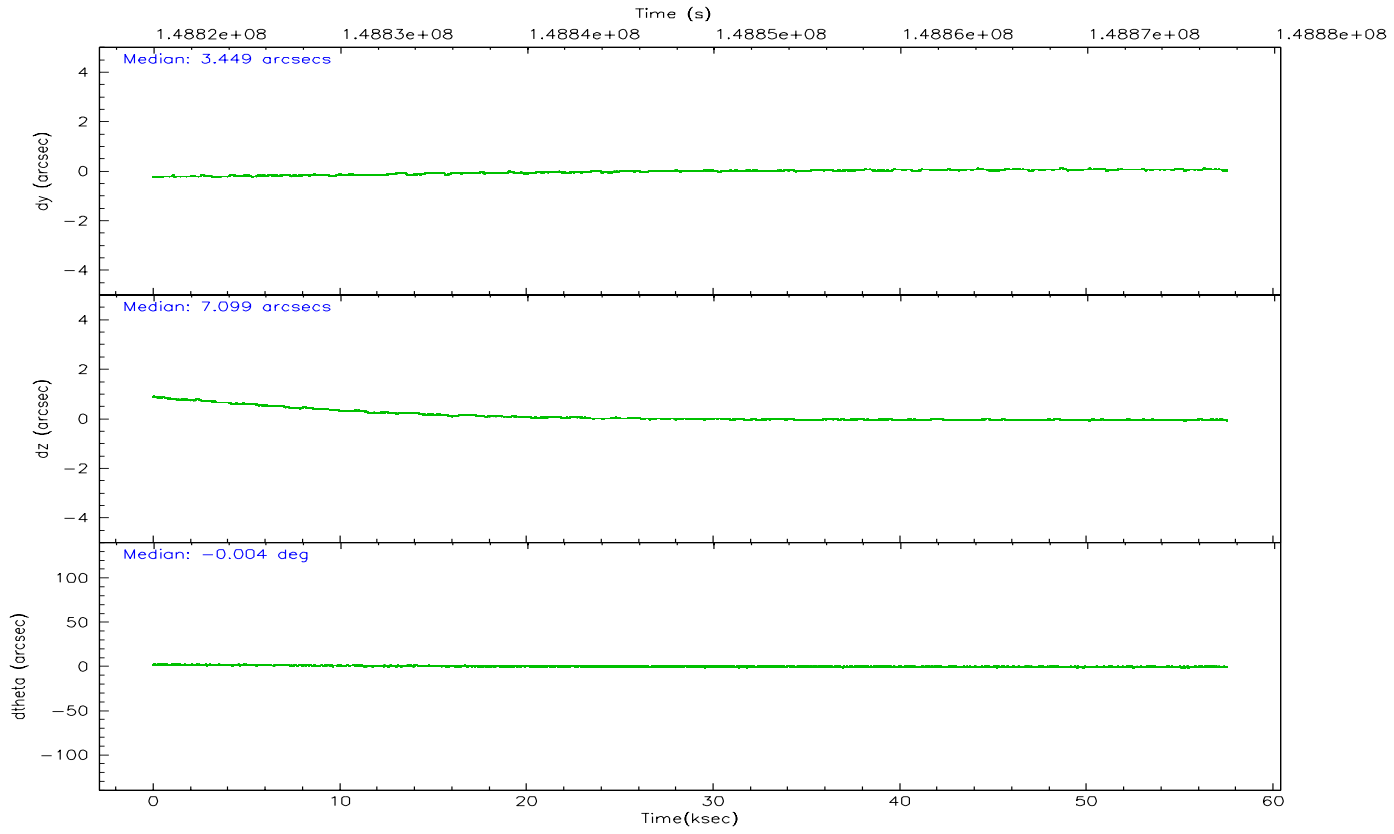
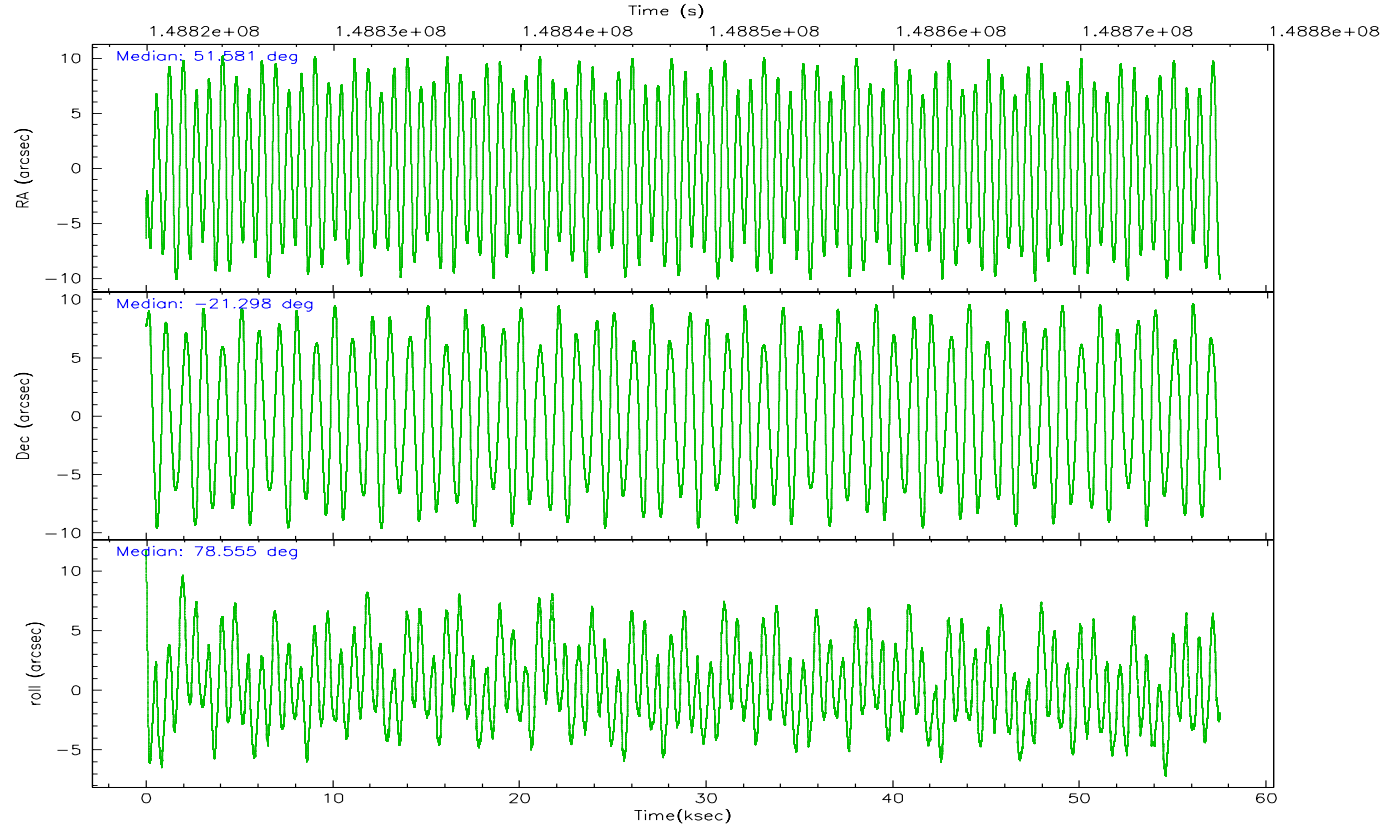
	ccd 2	ccd 3	ccd 5	ccd 6	ccd 7	ccd 8
grade 0 events	18450	17818	38132	18164	15343	29431
	5%	5%	6%	5%	3%	6%
grade 1 events	186	198	570	171	272	301
	0%	0%	0%	0%	0%	0%
grade 2 events	8314	7680	74702	8674	49013	19620
	2%	2%	13%	2%	9%	4%
grade 3 events	3891	3985	5467	4109	11157	9762
	1%	1%	0%	1%	2%	2%
grade 4 events	3951	3984	5382	4071	10823	9057
	1%	1%	0%	1%	2%	2%
grade 5 events	13704	14994	25001	15885	31336	20563
	3%	4%	4%	4%	6%	4%
grade 6 events	6815	7001	133444	8268	113170	23573
	1%	2%	24%	2%	22%	5%
grade 7 events	310235	290323	264062	302952	261782	333329
	84%	83%	48%	83%	53%	74%

2.2 Compared Parameters

Parameter	Planned	Actual	Parameter	Planned	Actual
Instrument	ACIS	ACIS	Obspar format version number	6	6
Detector	ACIS-235678	ACIS-235678	Obspar file type	PREDICTED	ACTUAL
Grating	NONE	NONE	Obspar update status	NONE	UPDATED
Data mode	FAINT	FAINT	Number of optional ACIS chips dropped	0	0
Observation mode	POINTING	POINTING	On-chip summing requested	N	N
Pointing RA	51.590694	51.58101835626891	Subarray requested	NONE	NONE
Pointing Dec	-21.323637	-21.29792248132758	Alternating exposures requested	N	N
Pointing Roll	78.407221	78.56033516171408	Primary exposure time	0.000000	3.2
SIM focus pos (mm)	-0.684267	-0.6828225247311905			
SIM defocus (mm)	0	0.001444936568705701			
SIM translation stage pos (mm)	-190.132523	-190.1400660498719			
SIM translation stage offset (mm)	0	0.00754346686406393			
Observation start time	148820181.184000	148819176.30768			
Observation start date	2002-09-19T10:55:17	2002-09-19T10:39:36			
Observation end time	148877481.184000	148877964.16011			
Observation end date	2002-09-20T02:50:17	2002-09-20T02:59:24			
Read mode	TIMED	TIMED			

2.3 Aspect



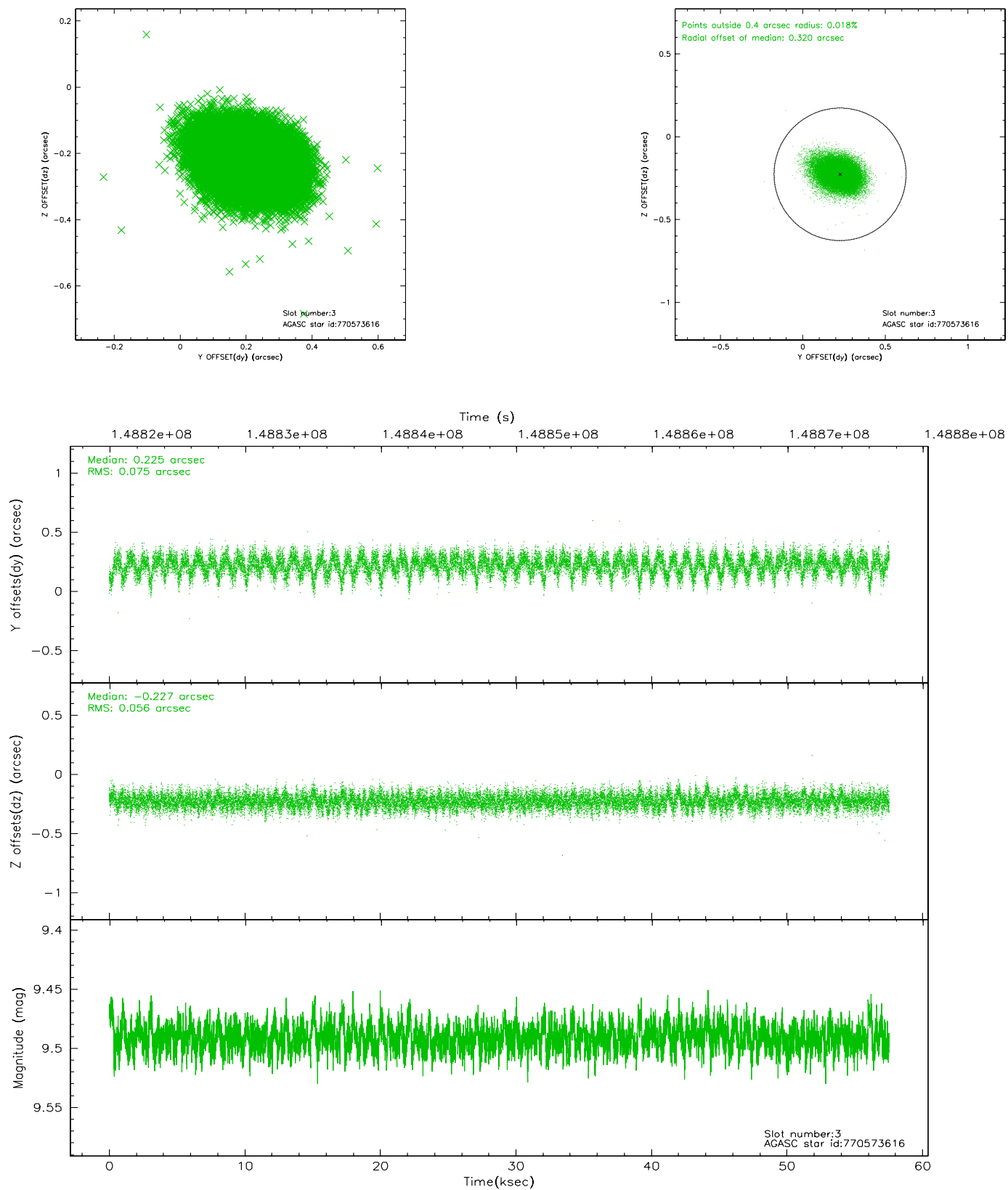


Slot Statistics

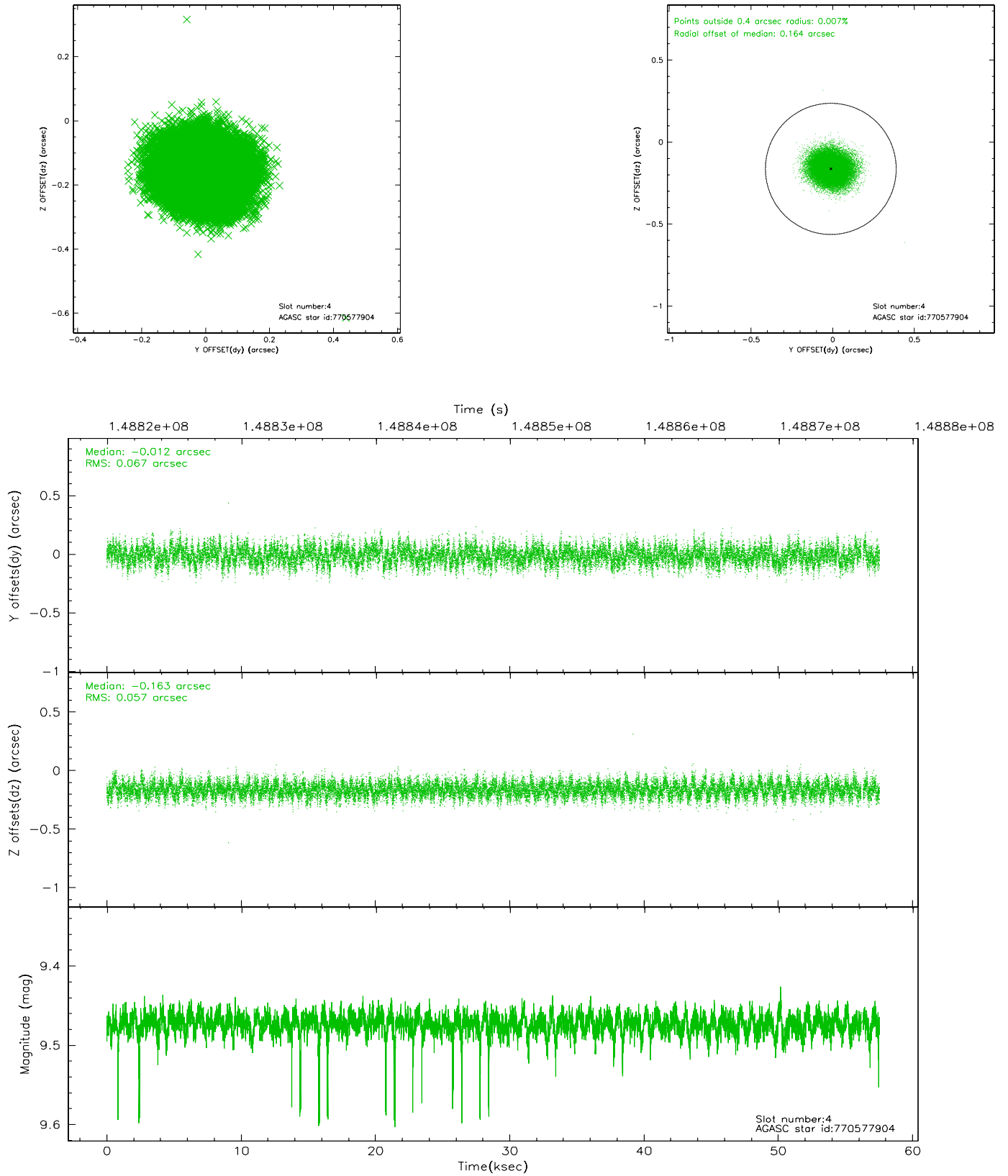
slot	status	id	mag	n_pts	med_dy	med_dz	dr1	dr2	ra	dec	mean_y	mean_z
0	FID	ACIS-S-2	7.12	14036	-0.005	0.019	0.008	0.014	0.000000	0.000000	-756.07	-1728.38
1	FID	ACIS-S-4	7.20	14036	-0.028	-0.002	0.009	0.019	0.000000	0.000000	2157.19	180.13
2	FID	ACIS-S-5	7.24	14037	0.004	-0.007	0.008	0.012	0.000000	0.000000	-1808.96	173.75
3	GUIDE	770573616	9.49	28054	0.225	-0.227	0.099	0.165	51.694921	-21.667566	-1142.60	-590.08
4	GUIDE	770577904	9.47	27960	-0.012	-0.163	0.094	0.150	51.566611	-20.775173	1917.87	476.89
5	GUIDE	770579504	10.11	27930	-0.083	0.007	0.133	0.209	52.151381	-20.838808	2085.80	-1497.00
6	GUIDE	770581880	9.64	28055	-0.008	0.148	0.101	0.161	52.016479	-20.947102	1613.90	-1129.40
7	GUIDE	770581640	7.86	28064	-0.116	0.233	0.066	0.105	52.322400	-21.371182	319.91	-2437.65

2.4 Star Slots

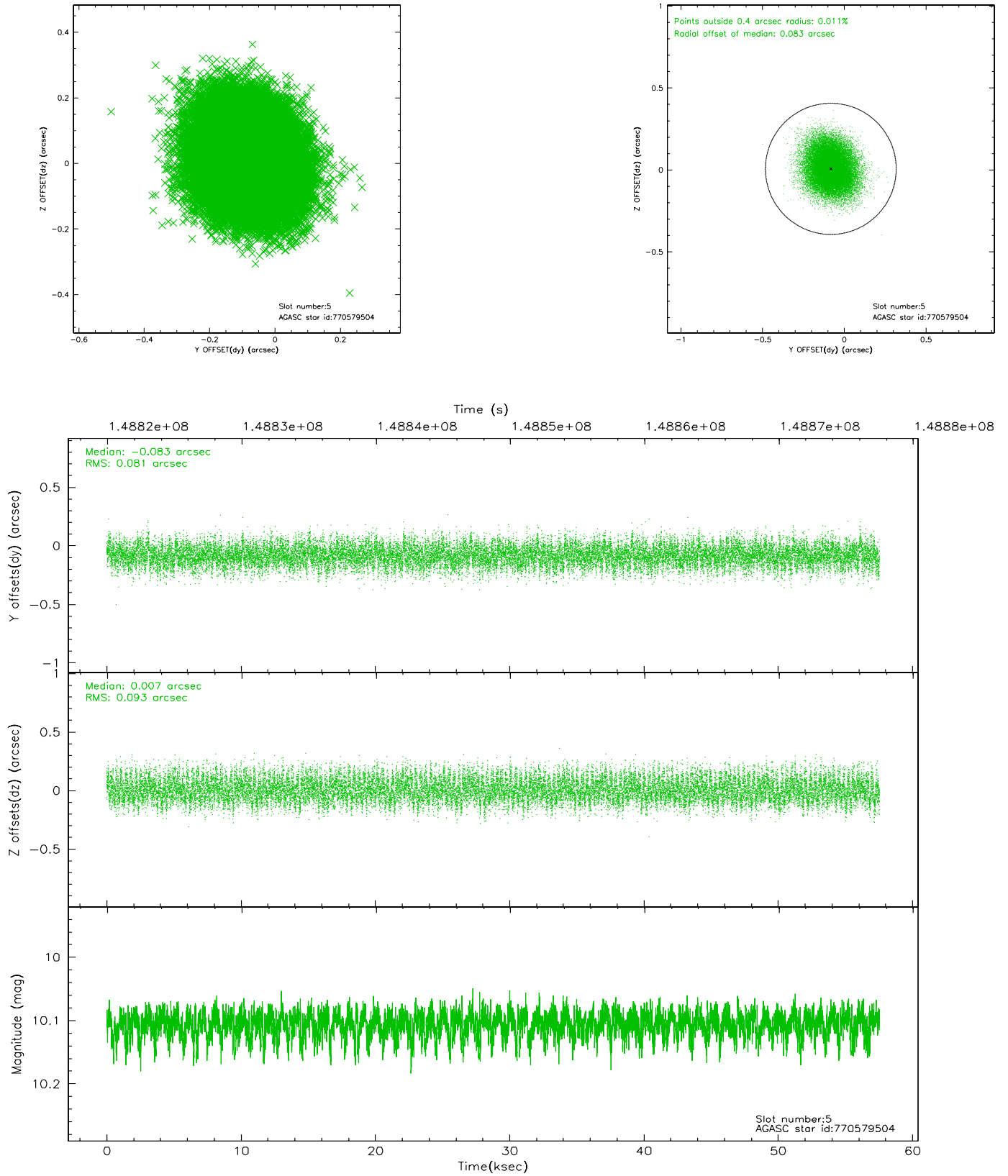
2.4.1 Slot 3



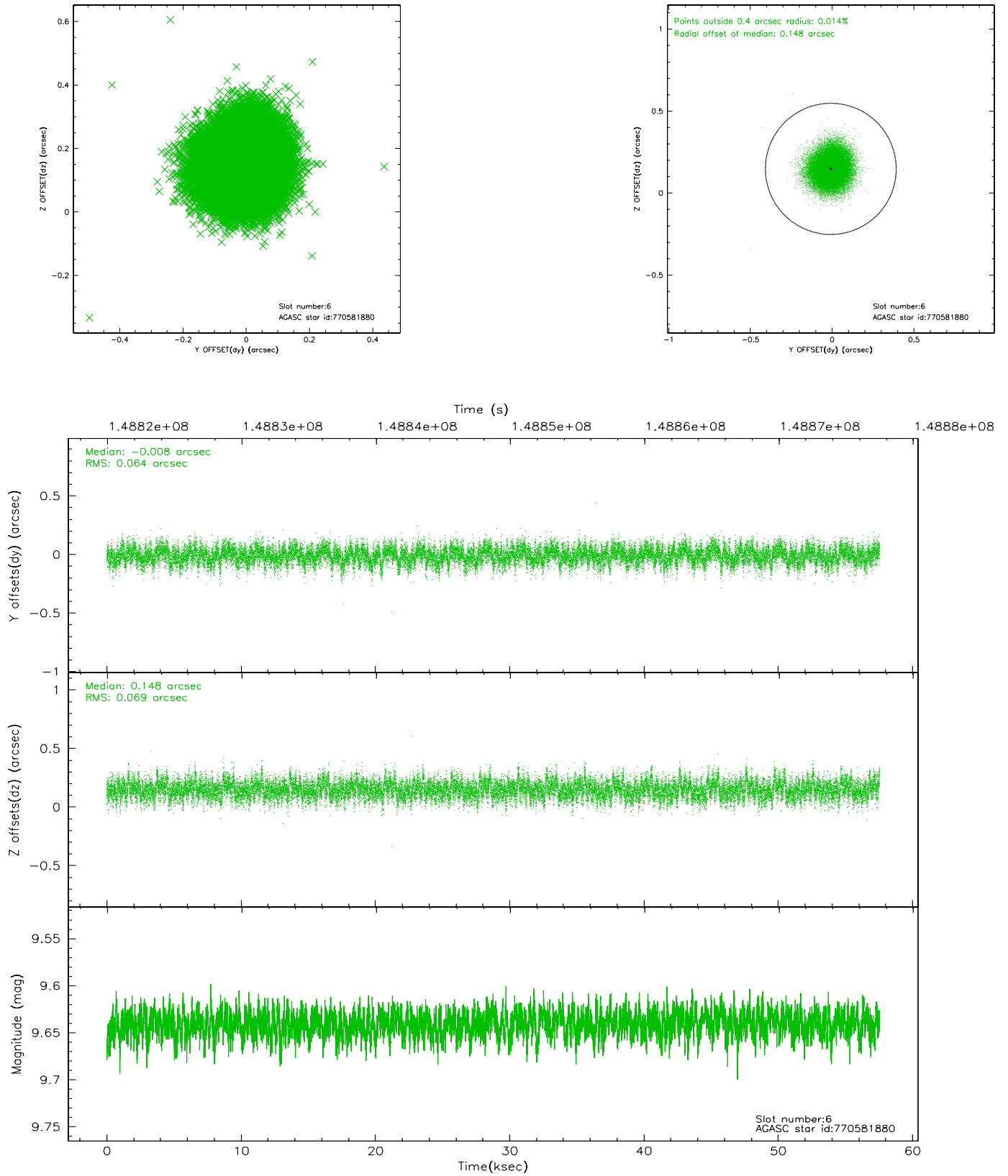
2.4.2 Slot 4



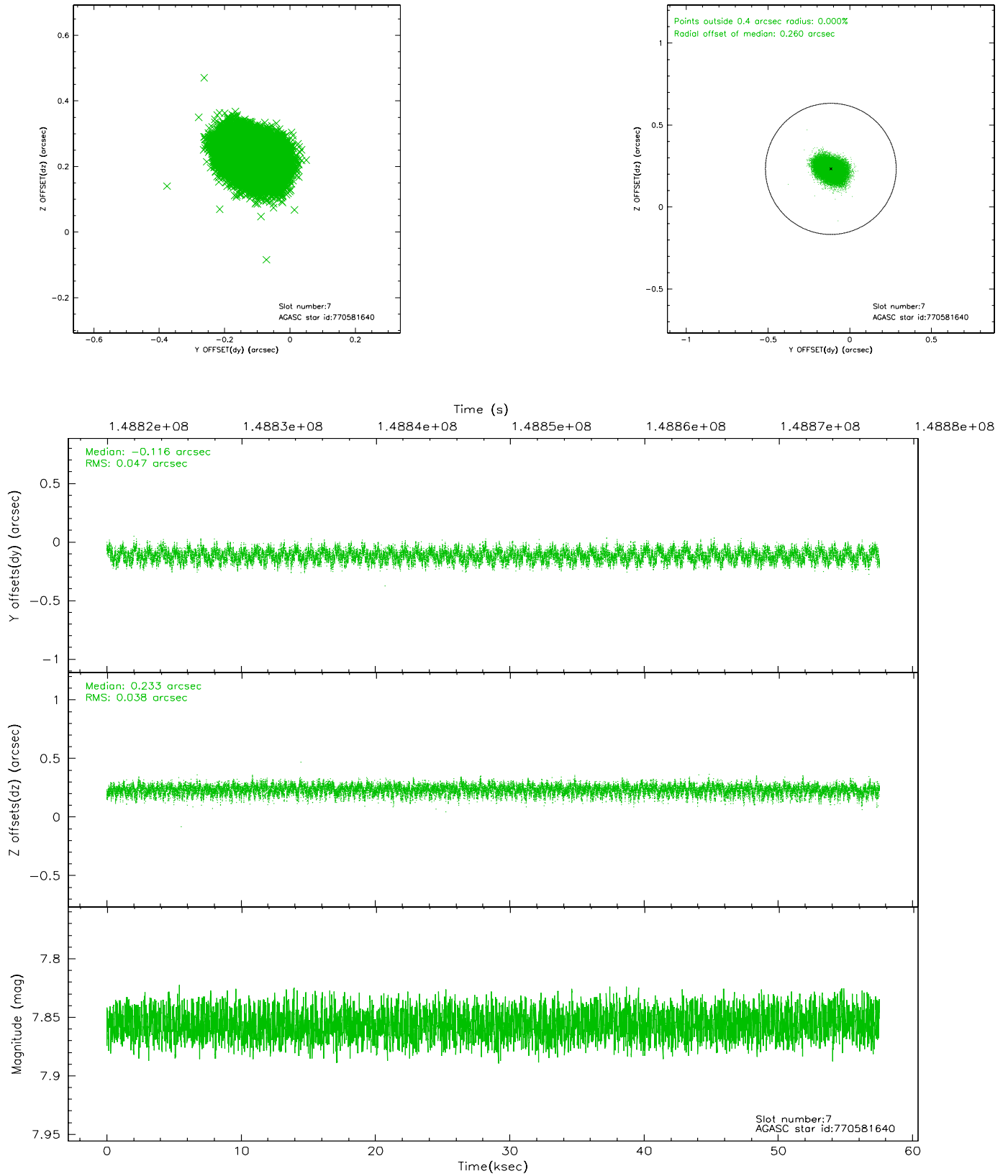
2.4.3 Slot 5



2.4.4 Slot 6

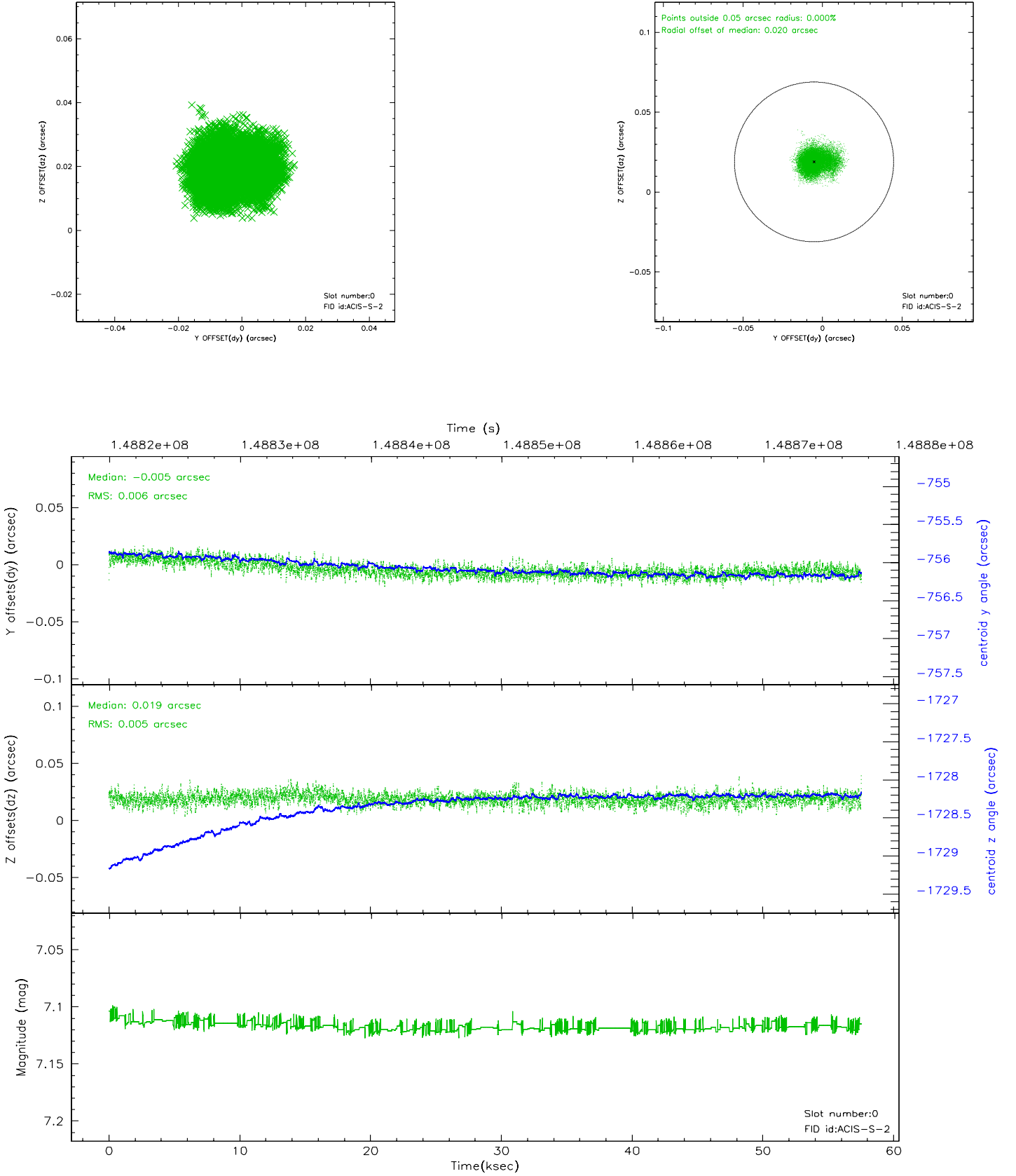


2.4.5 Slot 7

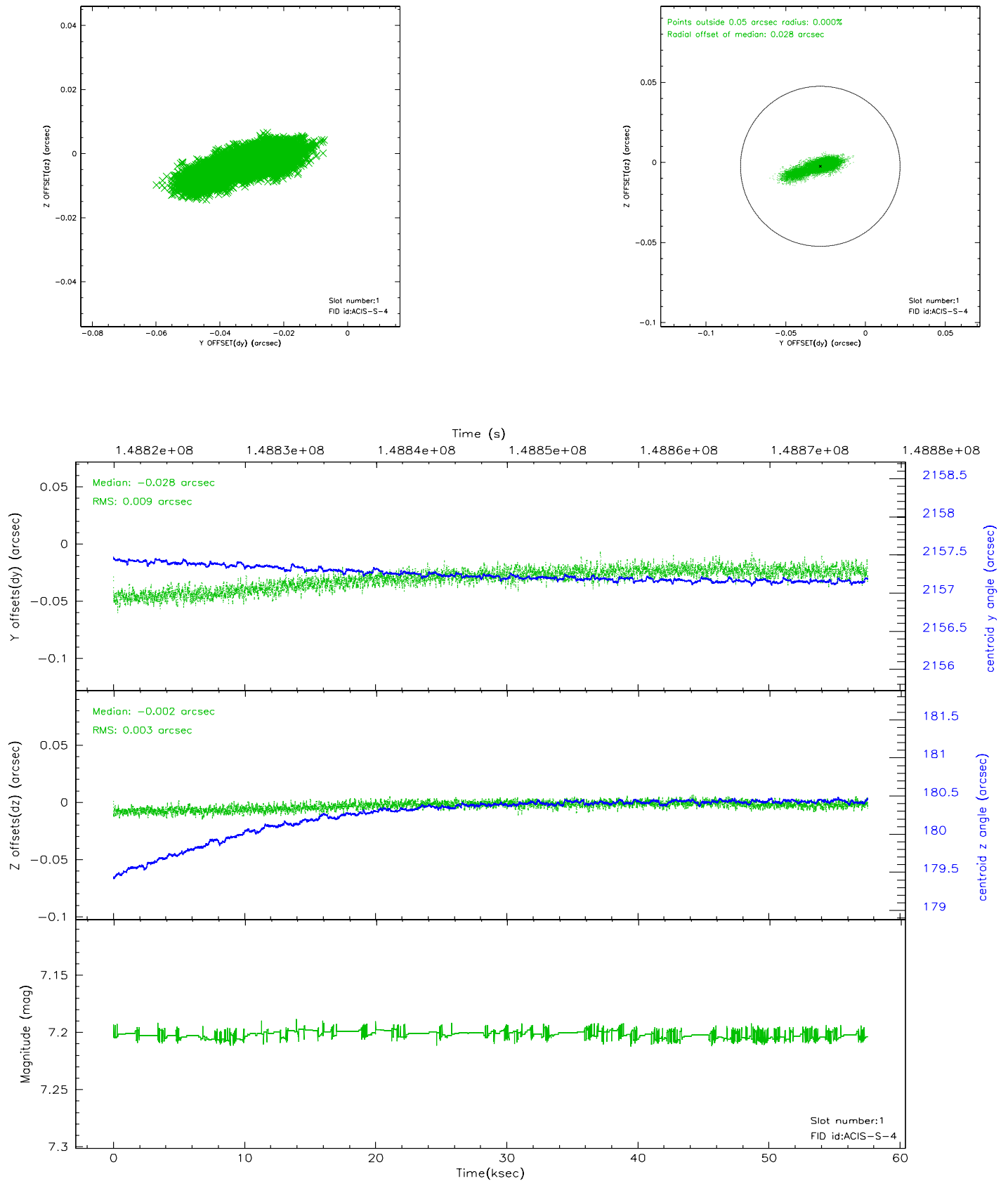


2.5 FID Slots

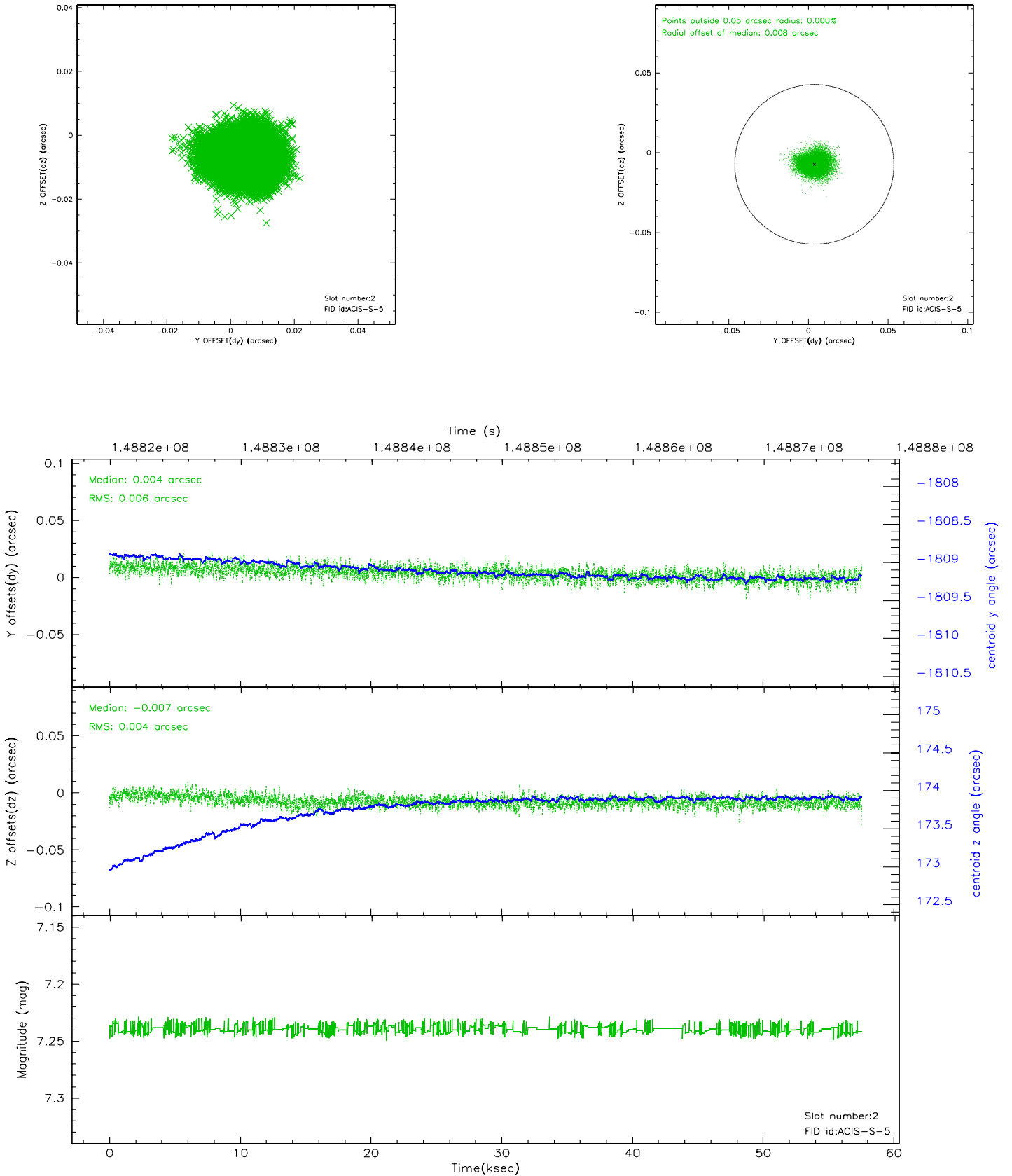
2.5.1 Slot 0



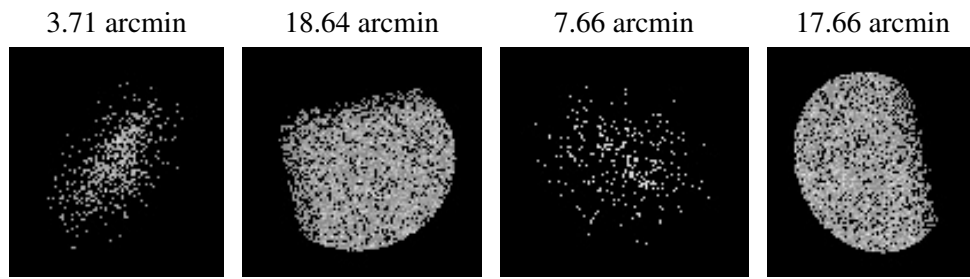
2.5.2 Slot 1



2.5.3 Slot 2



3 Point Sources



A Summary

A.1 Status

V&V Scientist	Jen Lauer
V&V Date (YYYY-MM-DD)	2006.10.05
V&V Edition	1
V&V Disposition and Status	OK
V&V Charge Time	57.263

A.2 Comments