

V&V Reference Report

L2 ASCDS Version : 7.6.8

Observation 4282 - L2 Version 001
Chandra X-Ray Center

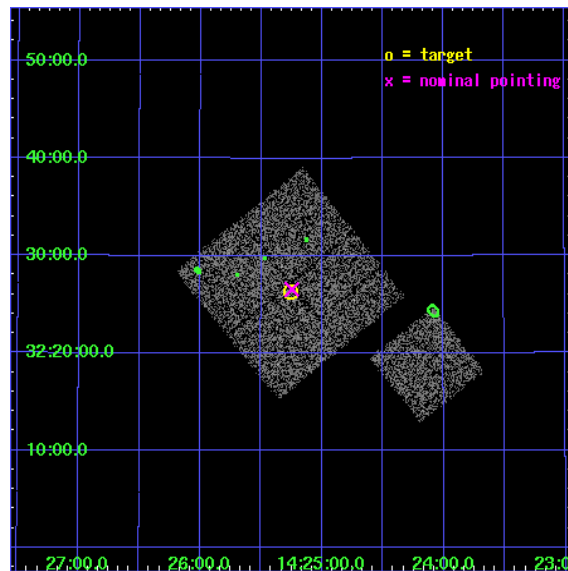
L2 Processing Date : Jul 29 2006

Contents

1	Front	2
2	OBI	3
2.1	OBI	3
2.1.1	Images	3
2.1.2	Bias	3
2.1.3	Parameters	4
2.1.4	Events	4
2.2	Compared Parameters	5
2.3	Aspect	6
2.4	Star Slots	9
2.4.1	Slot 3	9
2.4.2	Slot 4	10
2.4.3	Slot 5	11
2.4.4	Slot 6	12
2.4.5	Slot 7	13
2.5	FID Slots	14
2.5.1	Slot 0	14
2.5.2	Slot 1	15
2.5.3	Slot 2	16
3	Point Sources	17
A	Summary	18
A.1	Status	18
A.2	Comments	18

1 Front

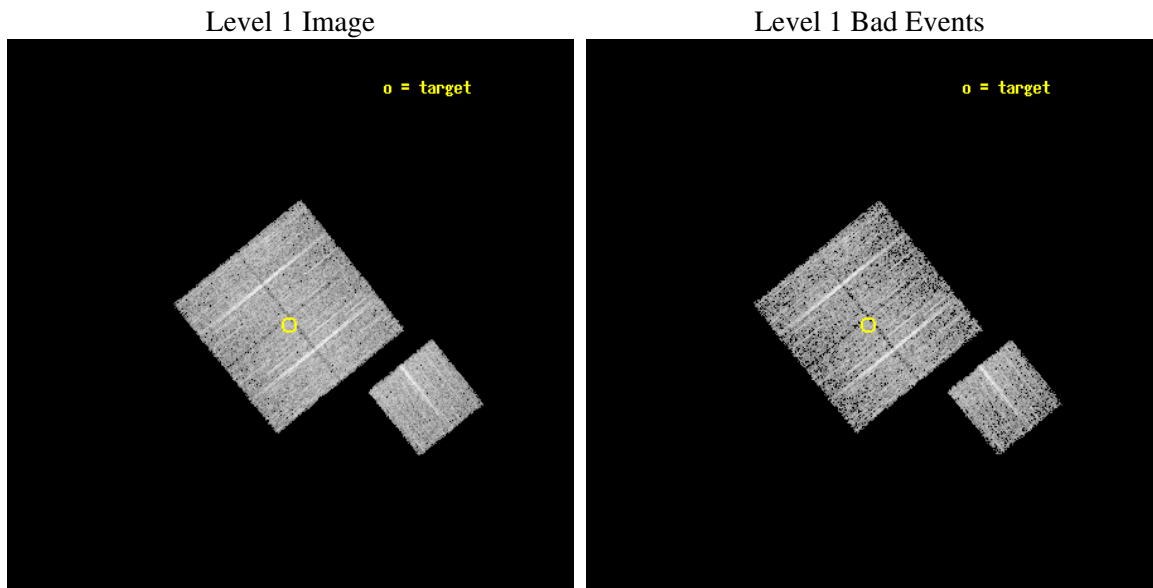
seq_num	900325
obs_id	4282
title	A CHANDRA WIDE-FIELD SURVEY TO MAP THE COSMIC WEB AND INVESTIGATE THE EVOLUTION OF NUCLEAR ACCRETION
observer	Dr. Christine Jones
object	SS60
dtcycle	0
cycle	P
ra_targ	216.314346
dec_targ	32.438448
ra_nom	216.31167064303
dec_nom	32.442576627128
roll_nom	141.01013265564
revision	2
ontime	5114.9590198398
livetime	5048.1283146675
ontime0	5114.9589999318
ontime1	5114.9589799941
ontime2	5114.9589999318
ontime3	5114.9590198398
ontime6	5118.0999901593
l2events	16681



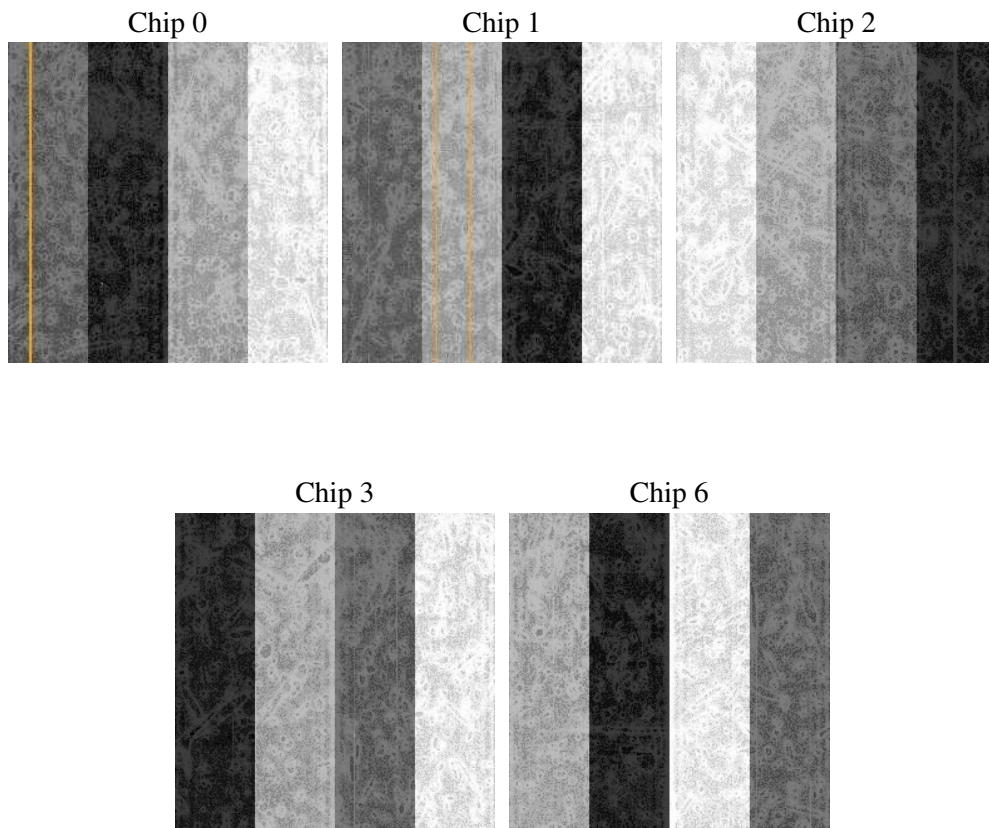
2 OBI

2.1 OBI

2.1.1 Images



2.1.2 Bias



2.1.3 Parameters

obi_num	0
ascdsver	7.6.8
caldsver	3.2.2
date	2006-07-29T16:15:23
revision	2

sched_exp_time	5000.000000
ontime	5119.8528258204
ontime0	5119.8528059125
ontime1	5119.8527859747
ontime2	5119.8528059125
ontime3	5119.8528258204
ontime6	5122.99379614
l1events	161416

2.1.4 Events

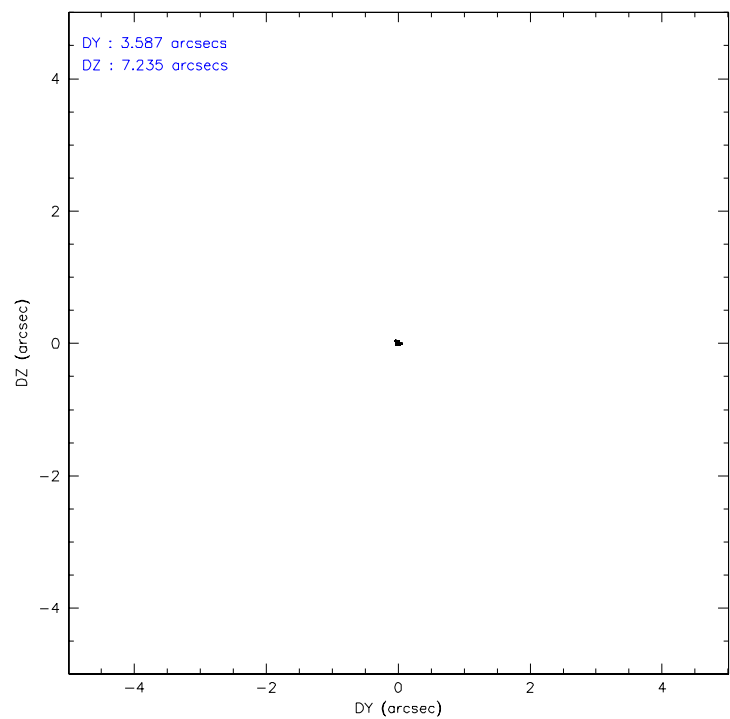
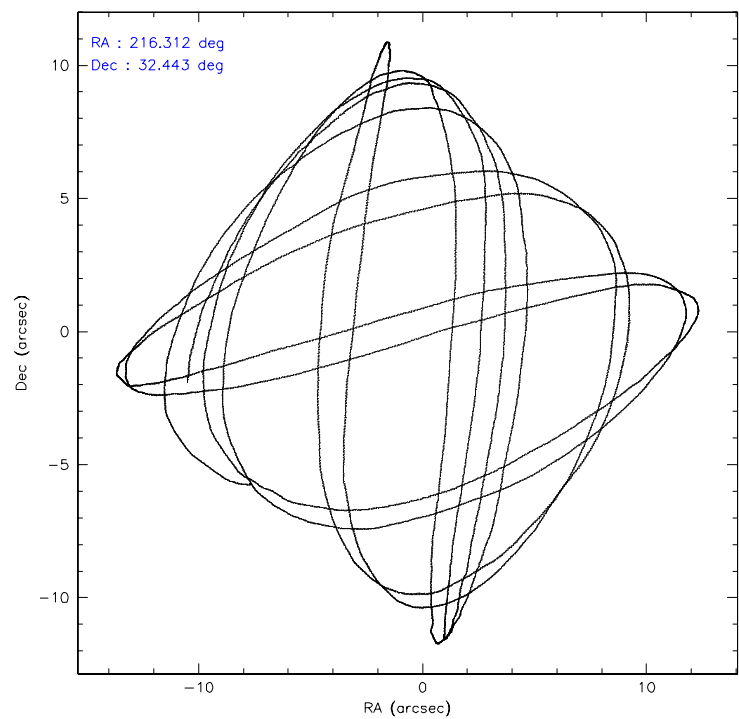
	ccd 0	ccd 1	ccd 2	ccd 3	ccd 6
level 1 events	31389	31354	33304	32388	32981
rejected events	27378	27182	29475	28656	29280
rejected %	87%	86%	88%	88%	88%

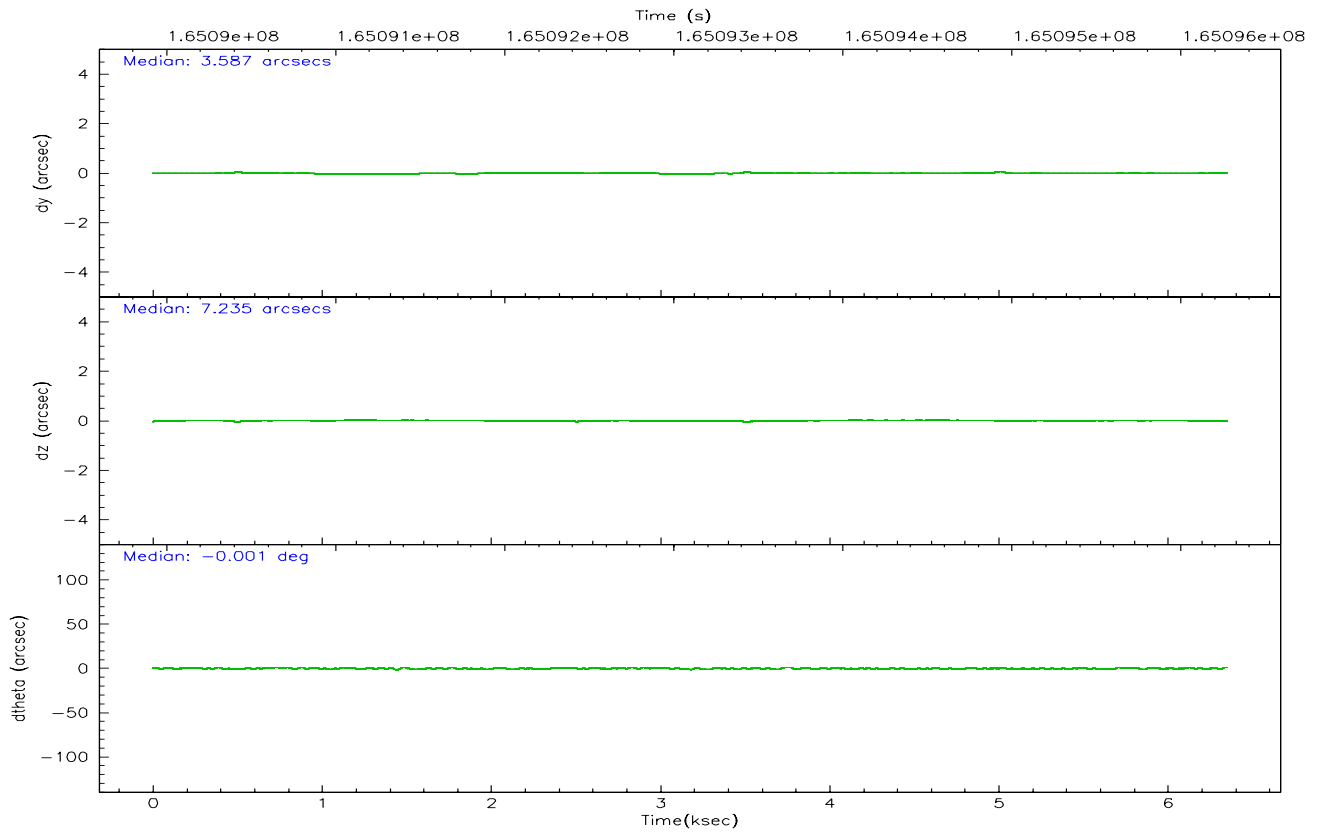
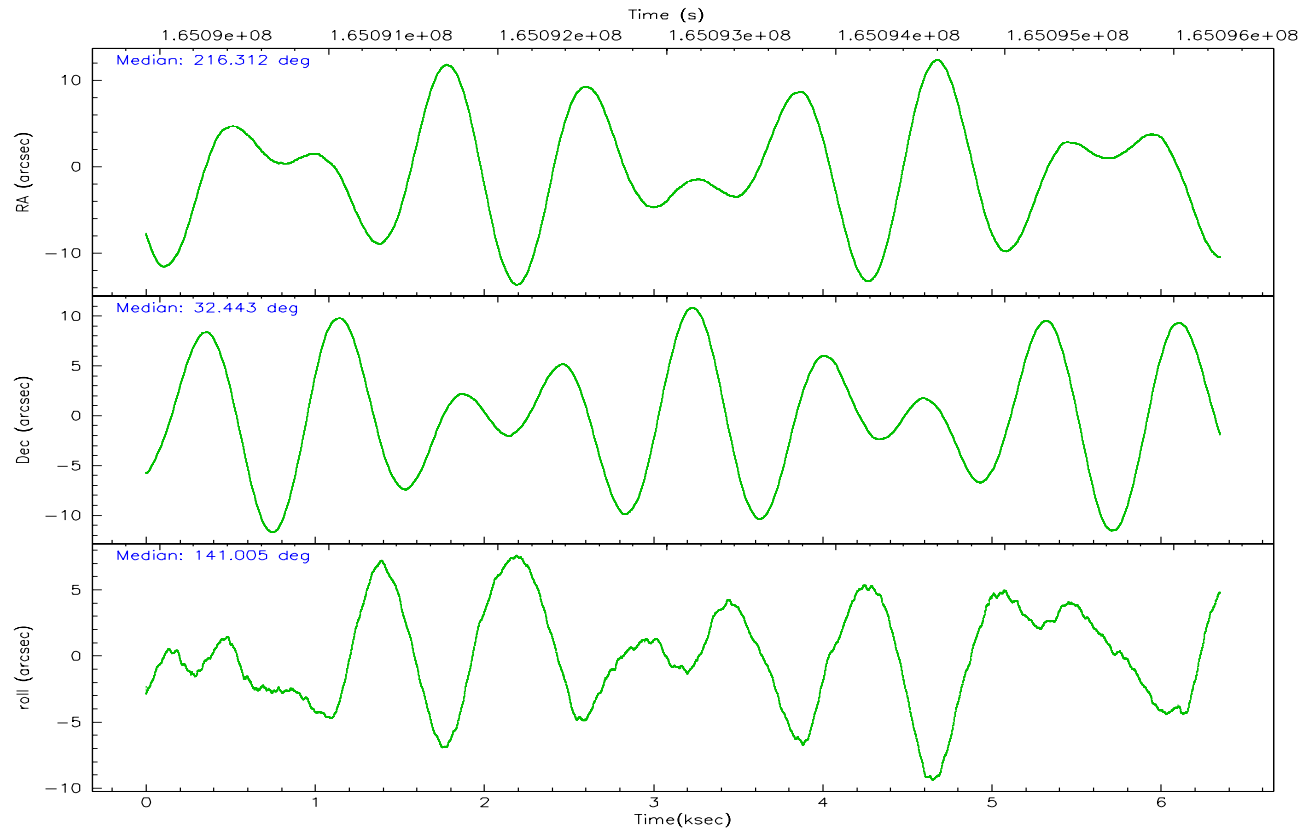
	ccd 0	ccd 1	ccd 2	ccd 3	ccd 6
grade 0 events	1734	1723	1717	1609	1445
	5%	5%	5%	4%	4%
grade 1 events	14	17	17	14	15
	0%	0%	0%	0%	0%
grade 2 events	846	838	761	714	790
	2%	2%	2%	2%	2%
grade 3 events	406	375	357	401	370
	1%	1%	1%	1%	1%
grade 4 events	349	418	337	356	367
	1%	1%	1%	1%	1%
grade 5 events	1324	1369	1204	1423	1445
	4%	4%	3%	4%	4%
grade 6 events	679	820	660	656	730
	2%	2%	1%	2%	2%
grade 7 events	26037	25794	28251	27215	27819
	82%	82%	84%	84%	84%

2.2 Compared Parameters

Parameter	Planned	Actual	Parameter	Planned	Actual
Instrument	ACIS	ACIS	Obspar format version number	6	6
Detector	ACIS-01236	ACIS-01236	Obspar file type	PREDICTED	ACTUAL
Grating	NONE	NONE	Obspar update status	NONE	UPDATED
Data mode	VFAINT	VFAINT	On-chip summing requested	N	N
Observation mode	POINTING	POINTING	Subarray requested	NONE	NONE
Pointing RA	216.343835	216.3116706430349	Alternating exposures requested	N	N
Pointing Dec	32.438360	32.44257662712798	Primary exposure time	0.000000	3.1
Pointing Roll	140.784181	141.0101326556403			
SIM focus pos (mm)	-0.782348	-0.7809083437167272			
SIM defocus (mm)	0	0.001439871863259334			
SIM translation stage pos (mm)	-233.592463	-233.5874344608287			
SIM translation stage offset (mm)	0	-0.005018542100998502			
Observation start time	165091269.184000	165089723.58726			
Observation start date	2003-03-26T18:40:05	2003-03-26T18:15:23			
Observation end time	165096269.184000	165096403.51254			
Observation end date	2003-03-26T20:03:25	2003-03-26T20:06:43			
Read mode	TIMED	TIMED			

2.3 Aspect



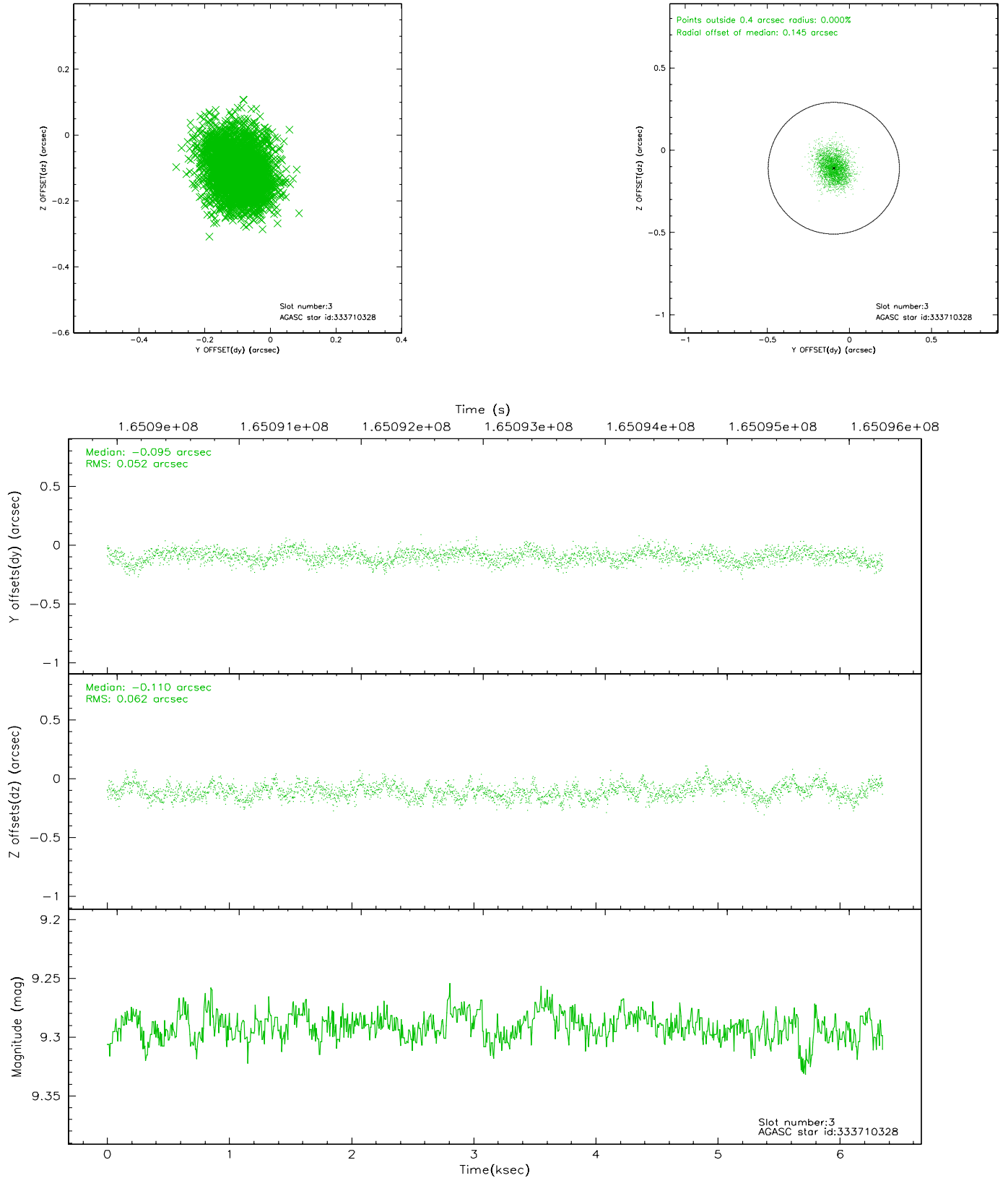


Slot Statistics

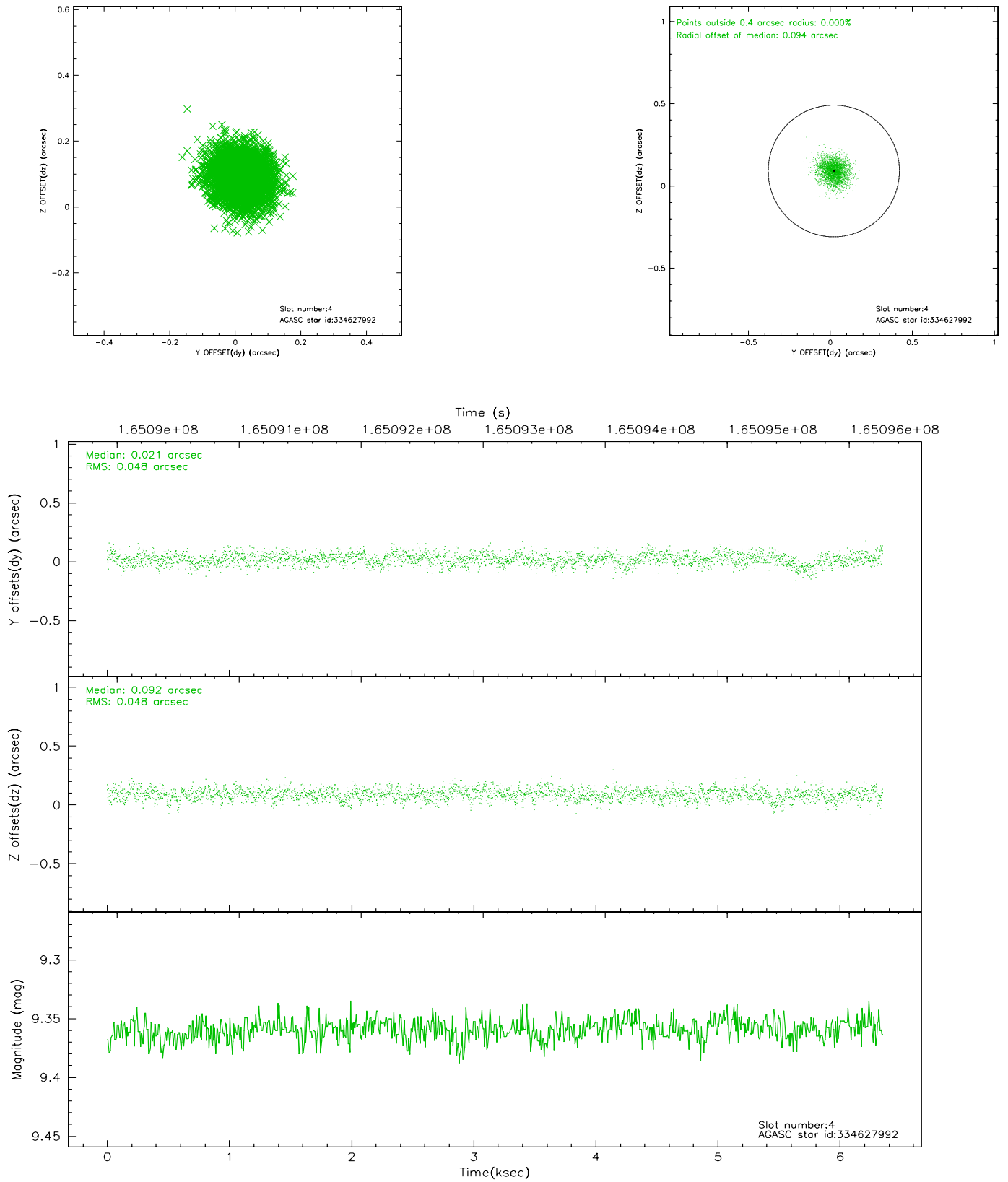
slot	status	id	mag	n_pts	med_dy	med_dz	dr1	dr2	ra	dec	mean_y	mean_z
0	FID	ACIS-I-1	7.25	1547	0.001	0.044	0.007	0.011	0.000000	0.000000	936.18	-830.60
1	FID	ACIS-I-5	7.24	1548	-0.066	0.055	0.006	0.010	0.000000	0.000000	-1811.45	1066.48
2	FID	ACIS-I-6	7.26	1548	-0.026	-0.028	0.007	0.011	0.000000	0.000000	400.73	1711.91
3	GUIDE	333710328	9.29	3094	-0.095	-0.110	0.087	0.141	215.919797	32.382995	874.41	967.86
4	GUIDE	334627992	9.36	3095	0.021	0.092	0.073	0.118	216.814353	32.274859	-1479.55	-451.29
5	GUIDE	334629904	9.57	3096	0.055	-0.158	0.118	0.199	216.267494	31.709687	-1478.18	2180.15
6	GUIDE	335030152	9.71	3096	-0.087	0.103	0.108	0.177	216.202154	33.091054	1816.29	-1549.29
7	GUIDE	334627104	9.72	3094	0.113	0.078	0.091	0.149	217.006799	32.294654	-1885.56	-879.83

2.4 Star Slots

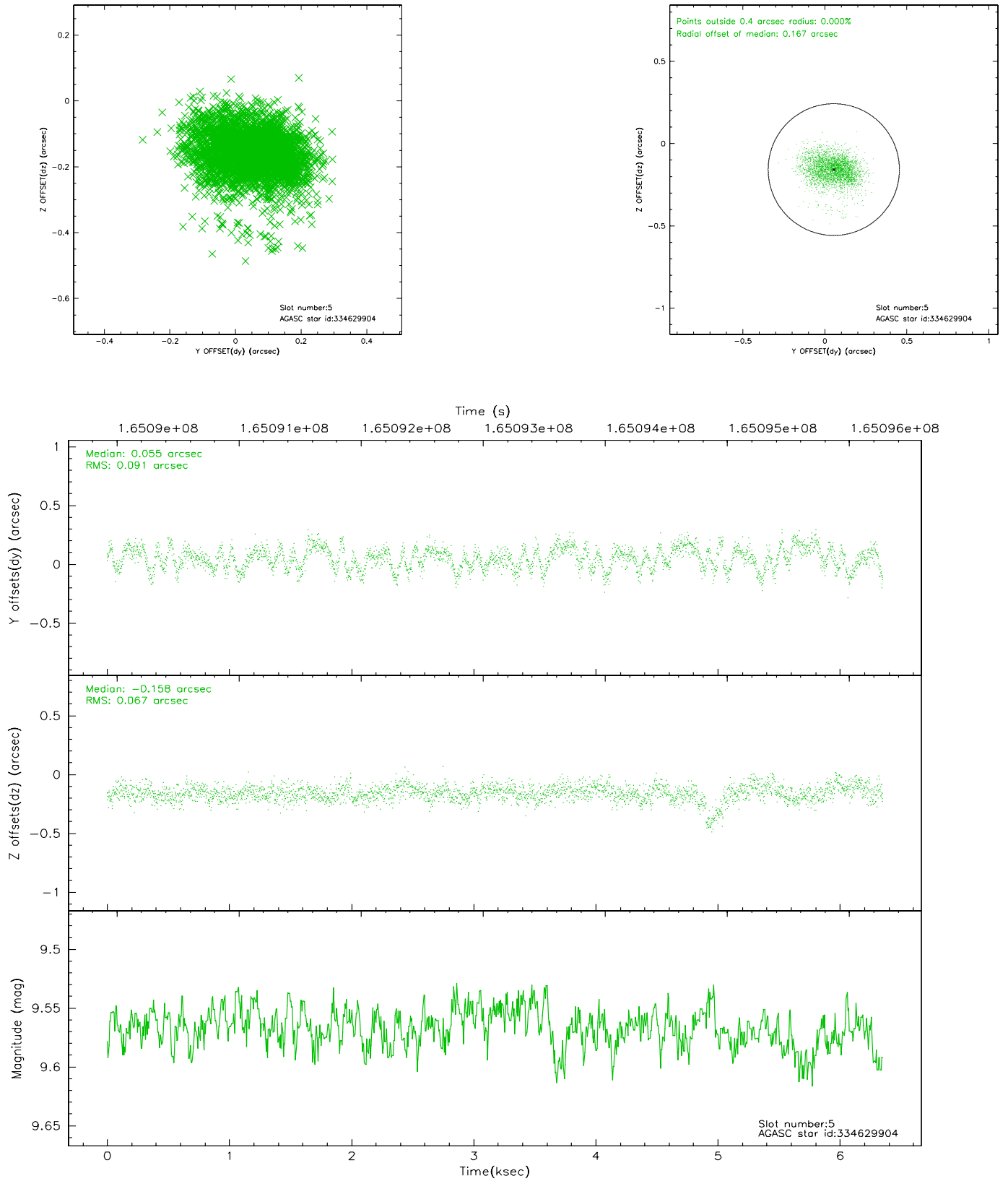
2.4.1 Slot 3



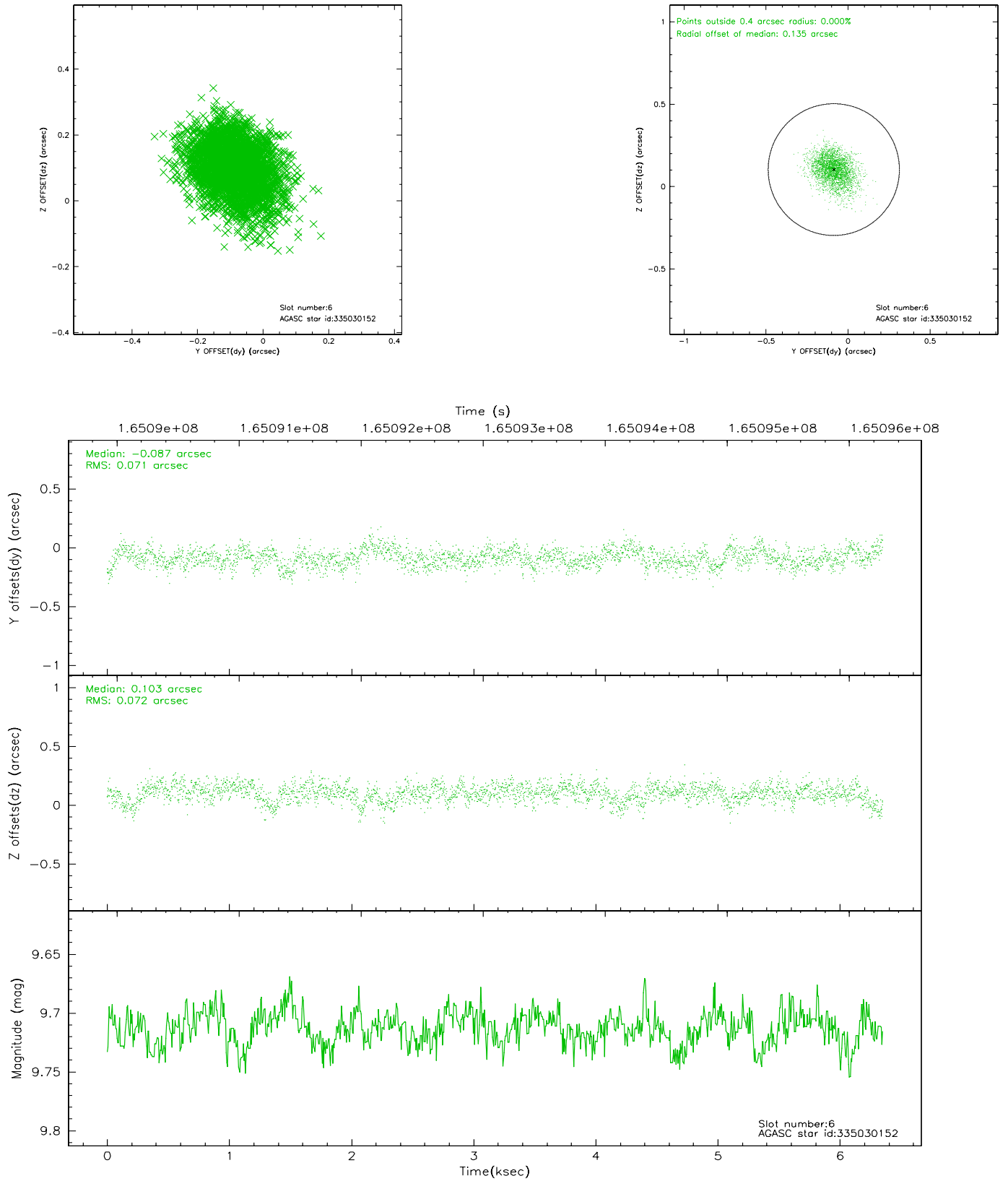
2.4.2 Slot 4



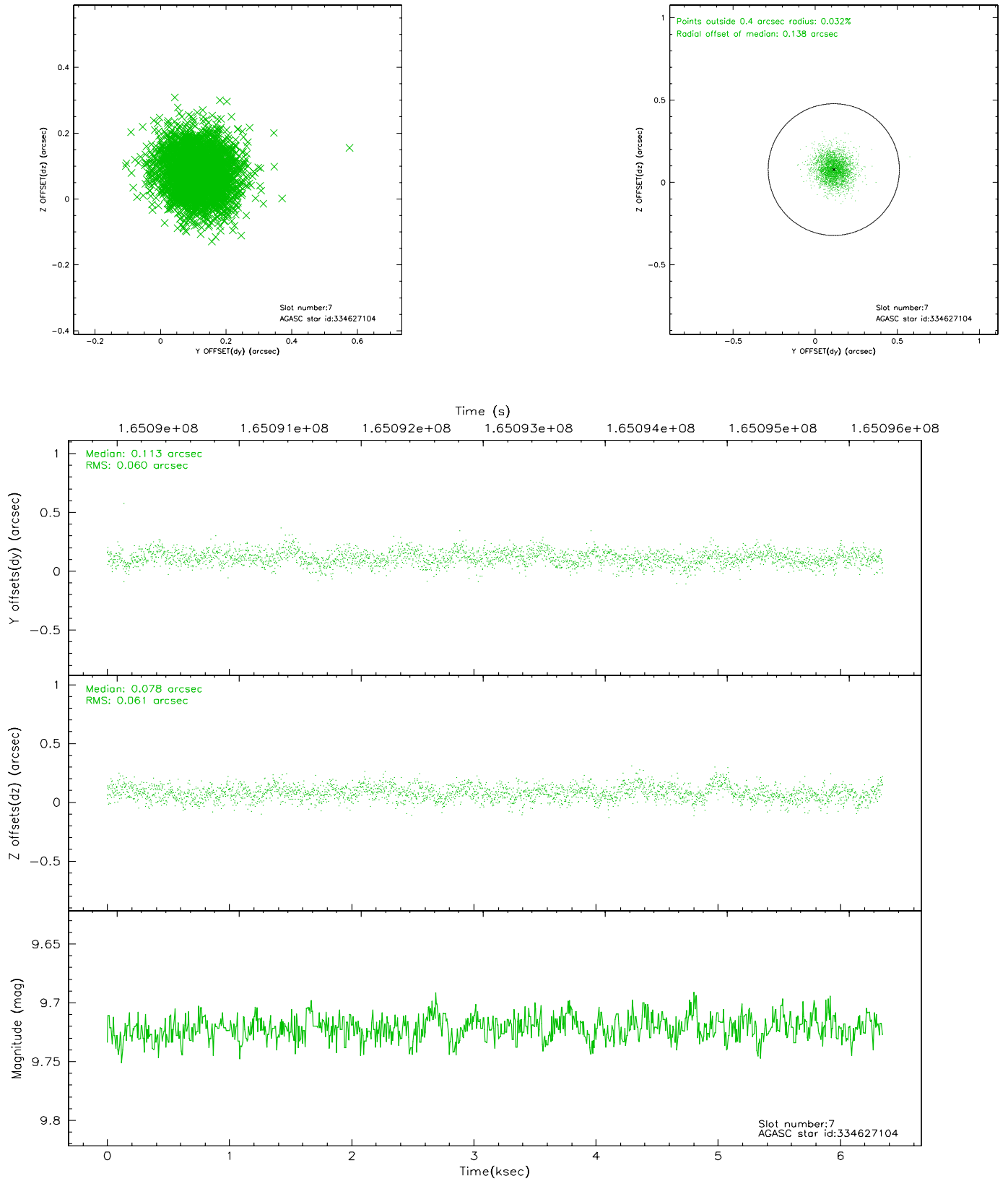
2.4.3 Slot 5



2.4.4 Slot 6

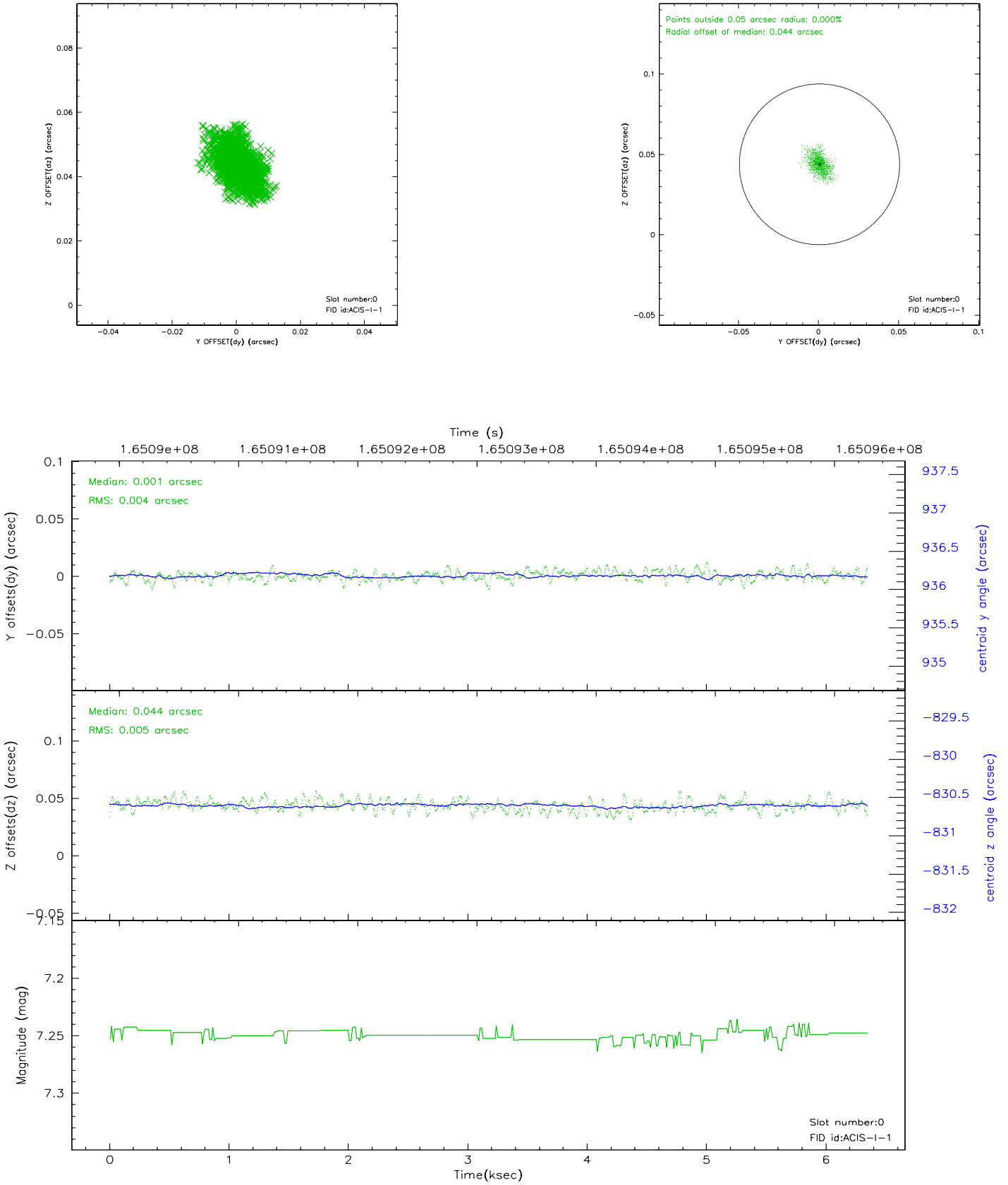


2.4.5 Slot 7

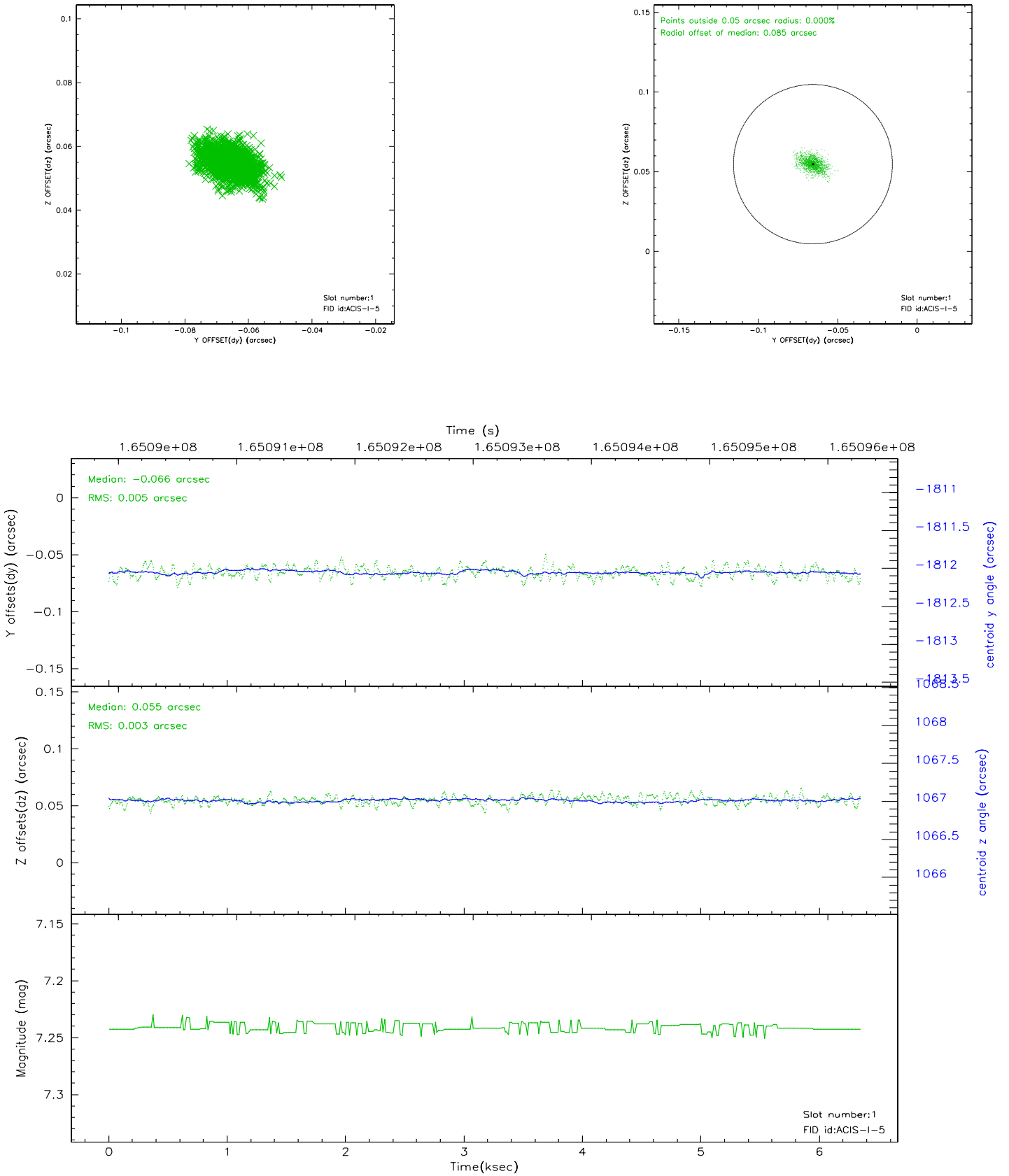


2.5 FID Slots

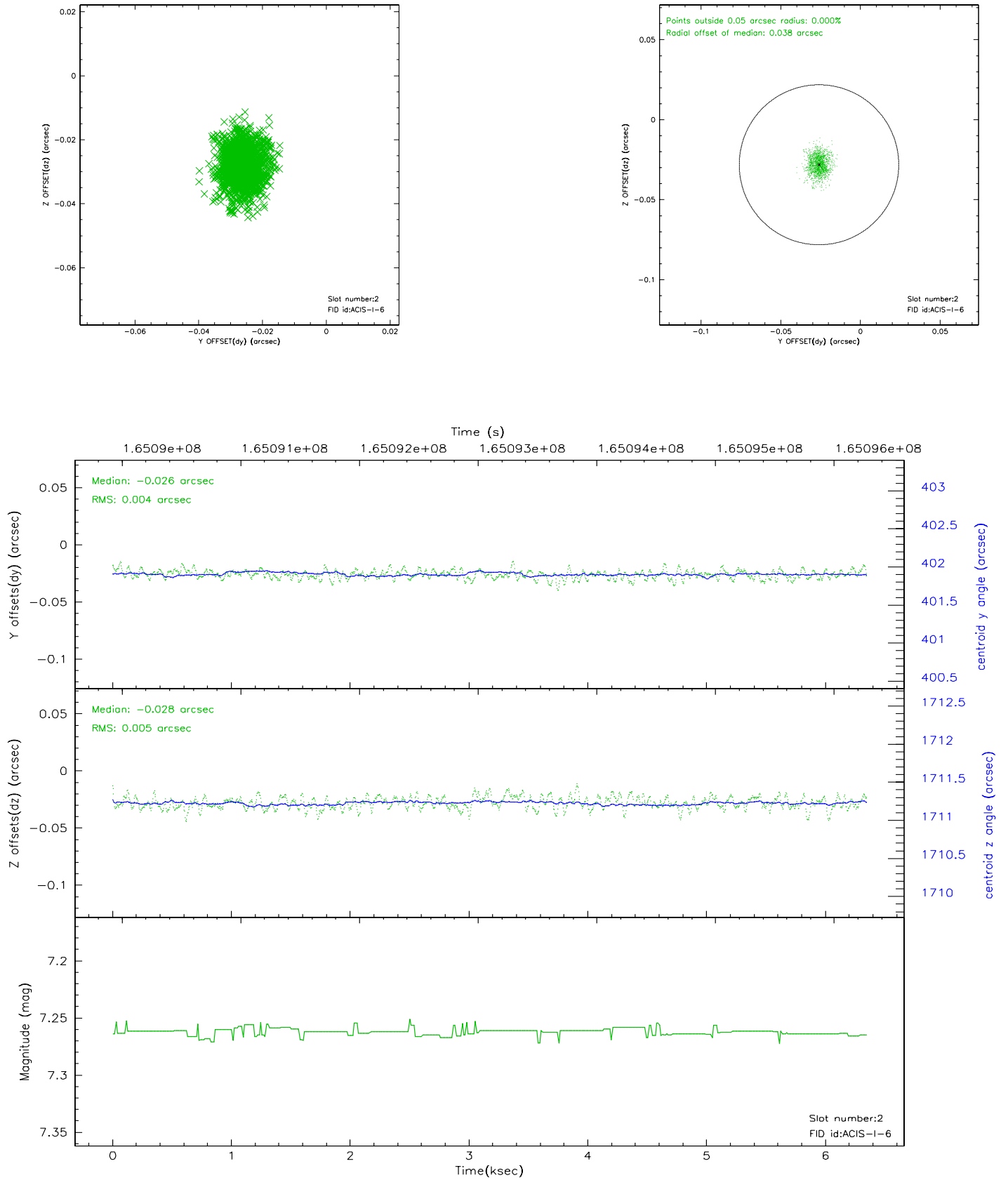
2.5.1 Slot 0



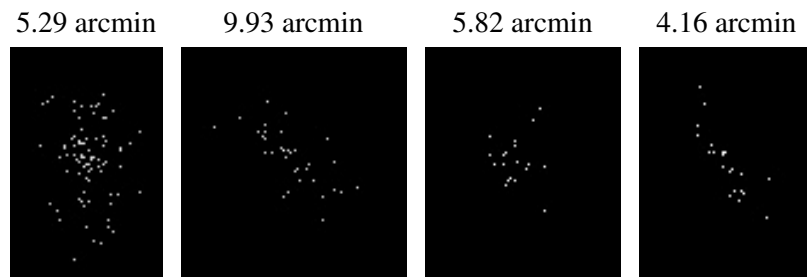
2.5.2 Slot 1



2.5.3 Slot 2



3 Point Sources



A Summary

A.1 Status

V&V Scientist	Jen Lauer
V&V Date (YYYY-MM-DD)	2006.07.30
V&V Edition	1
V&V Disposition and Status	OK
V&V Charge Time	5.114

A.2 Comments