

# V&V Reference Report

## L2 ASCDS Version : 7.6.8

Observation 4252 - L2 Version 001  
Chandra X-Ray Center

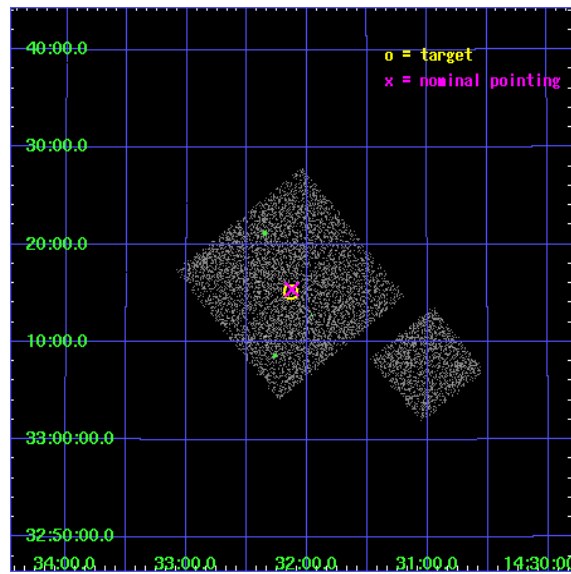
L2 Processing Date : Jul 29 2006

## Contents

<b>1</b>	<b>Front</b>	<b>2</b>
<b>2</b>	<b>OBI</b>	<b>3</b>
2.1	OBI . . . . .	3
2.1.1	Images . . . . .	3
2.1.2	Bias . . . . .	3
2.1.3	Parameters . . . . .	4
2.1.4	Events . . . . .	4
2.2	Compared Parameters . . . . .	5
2.3	Aspect . . . . .	6
2.4	Star Slots . . . . .	9
2.4.1	Slot 3 . . . . .	9
2.4.2	Slot 4 . . . . .	10
2.4.3	Slot 5 . . . . .	11
2.4.4	Slot 6 . . . . .	12
2.4.5	Slot 7 . . . . .	13
2.5	FID Slots . . . . .	14
2.5.1	Slot 0 . . . . .	14
2.5.2	Slot 1 . . . . .	15
2.5.3	Slot 2 . . . . .	16
<b>3</b>	<b>Point Sources</b>	<b>17</b>
<b>A</b>	<b>Summary</b>	<b>18</b>
A.1	Status . . . . .	18
A.2	Comments . . . . .	18

# 1 Front

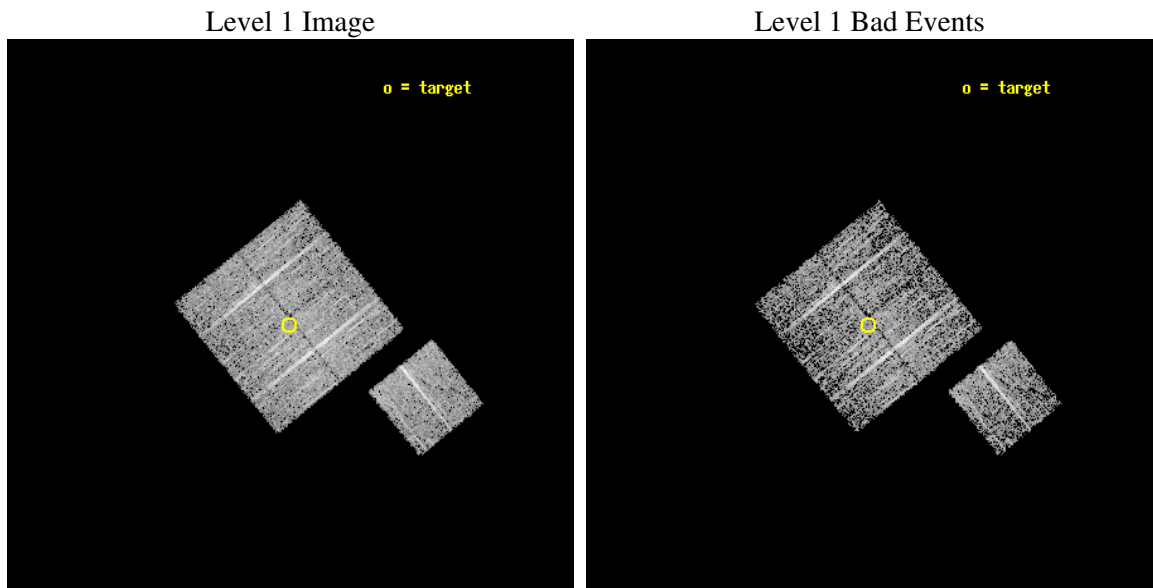
seq_num	900295
obs_id	4252
title	A CHANDRA WIDE-FIELD SURVEY TO MAP THE COSMIC WEB AND INVESTIGATE THE EVOLUTION OF NUCLEAR ACCRETION
observer	Dr. Christine Jones
object	SD51
dtcycle	0
cycle	P
ra_targ	218.034014
dec_targ	33.253224
ra_nom	218.03138171184
dec_nom	33.257317877588
roll_nom	141.01015356197
revision	2
ontime	4674.7999910116
livetime	4613.7202875914
ontime0	4674.7999910116
ontime1	4674.7999910116
ontime2	4674.7999910116
ontime3	4674.7999910116
ontime6	4674.7721267045
l2events	9414



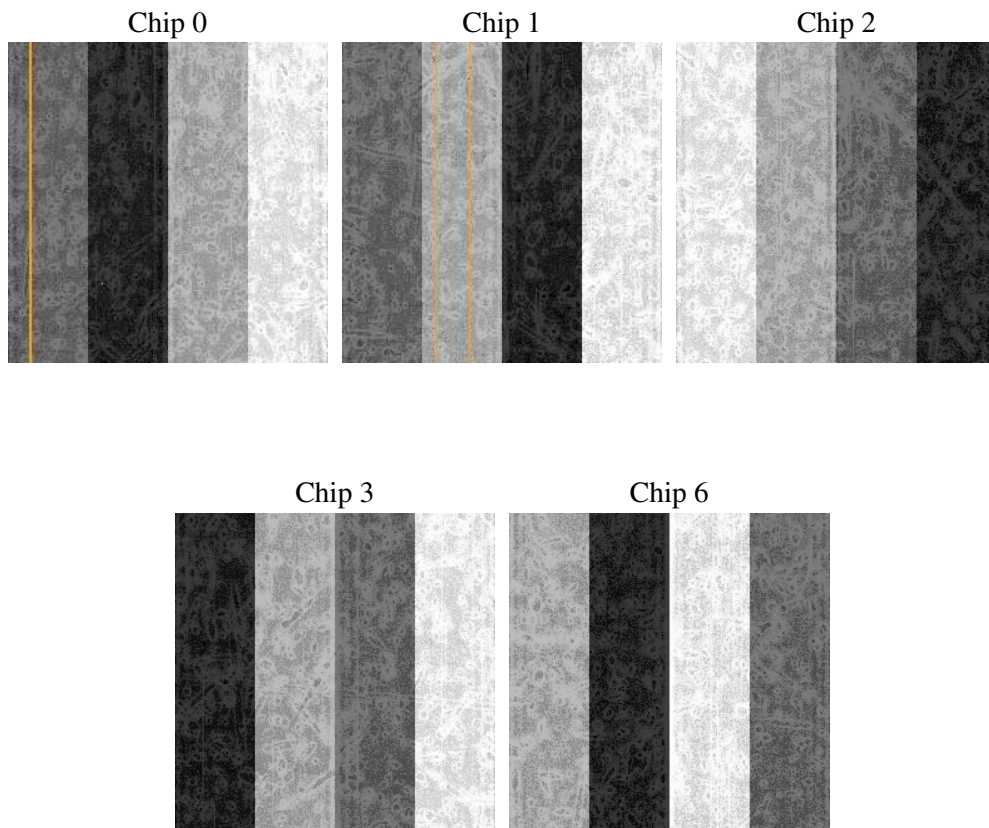
## 2 OBI

### 2.1 OBI

#### 2.1.1 Images



#### 2.1.2 Bias



### 2.1.3 Parameters

obi_num	1
ascdsver	7.6.8
caldsver	3.2.2
date	2006-07-29T21:34:54
revision	2

sched_exp_time	4900.000000
ontime	4676.964387238
ontime0	4676.964387238
ontime1	4676.9644071758
ontime2	4676.9644071758
ontime3	4676.964387238
ontime6	4676.9644071758
l1events	112445

### 2.1.4 Events

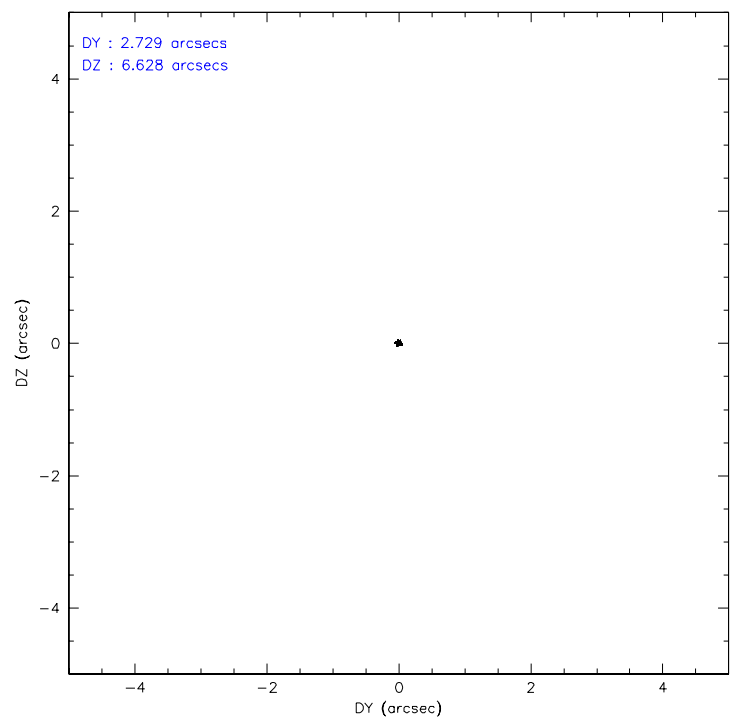
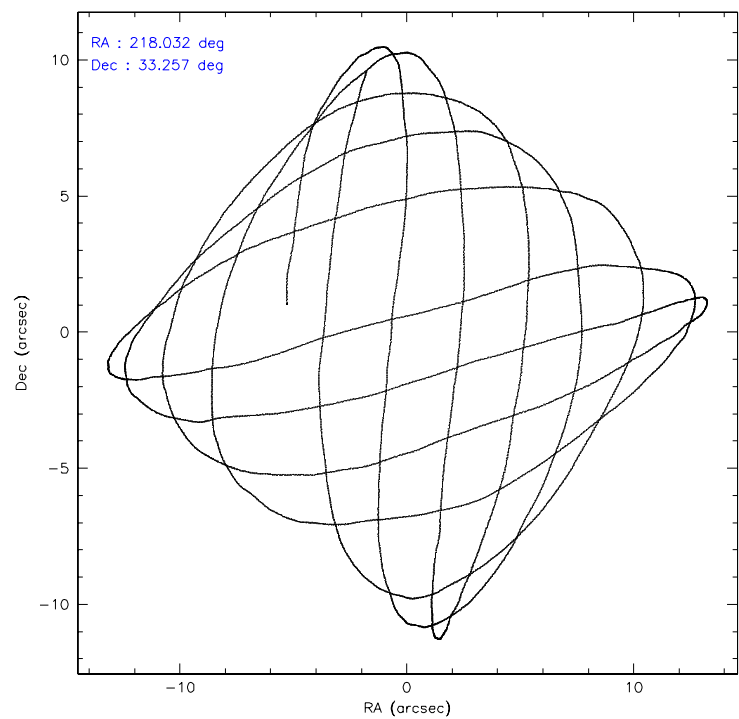
	ccd 0	ccd 1	ccd 2	ccd 3	ccd 6
level 1 events	21530	20656	24574	23548	22137
rejected events	19218	18228	22295	21326	19878
rejected %	89%	88%	90%	90%	89%

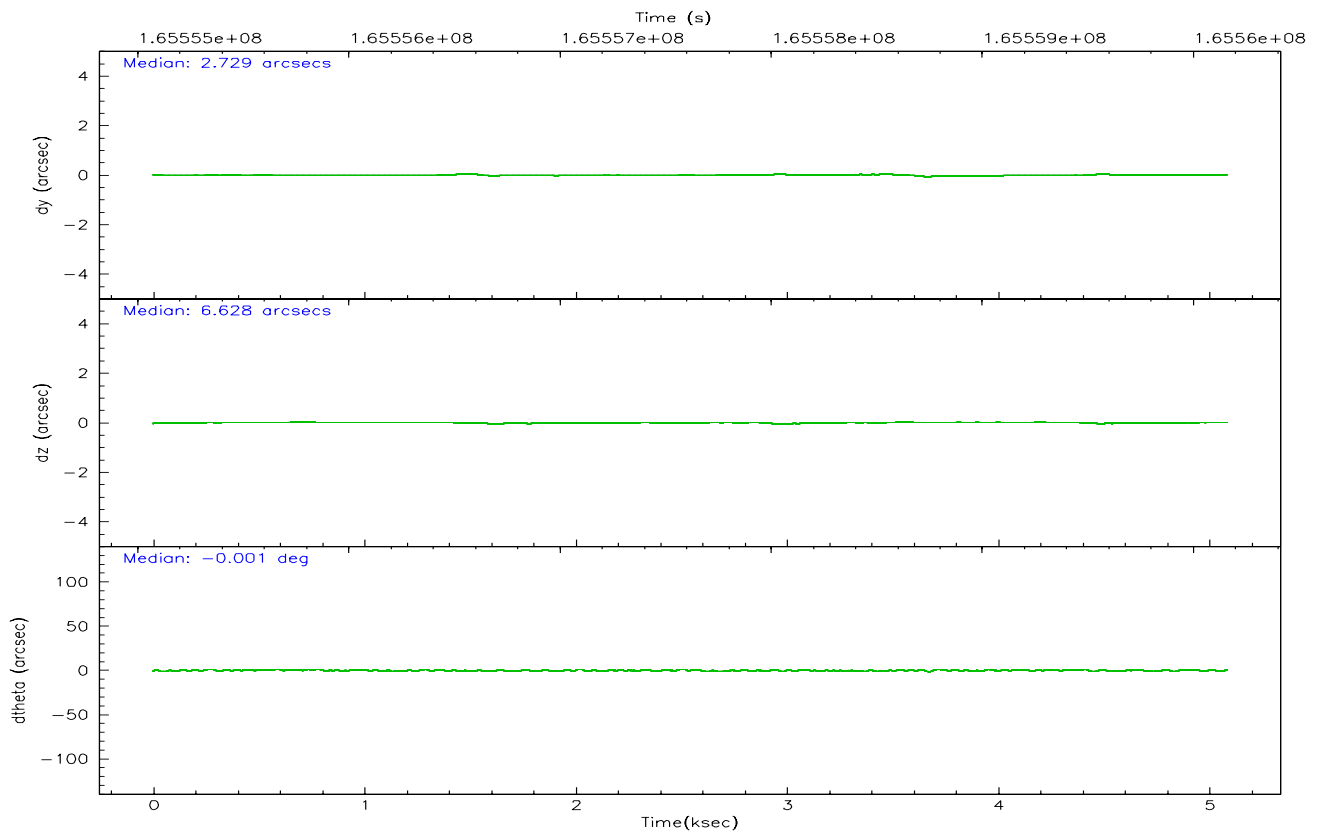
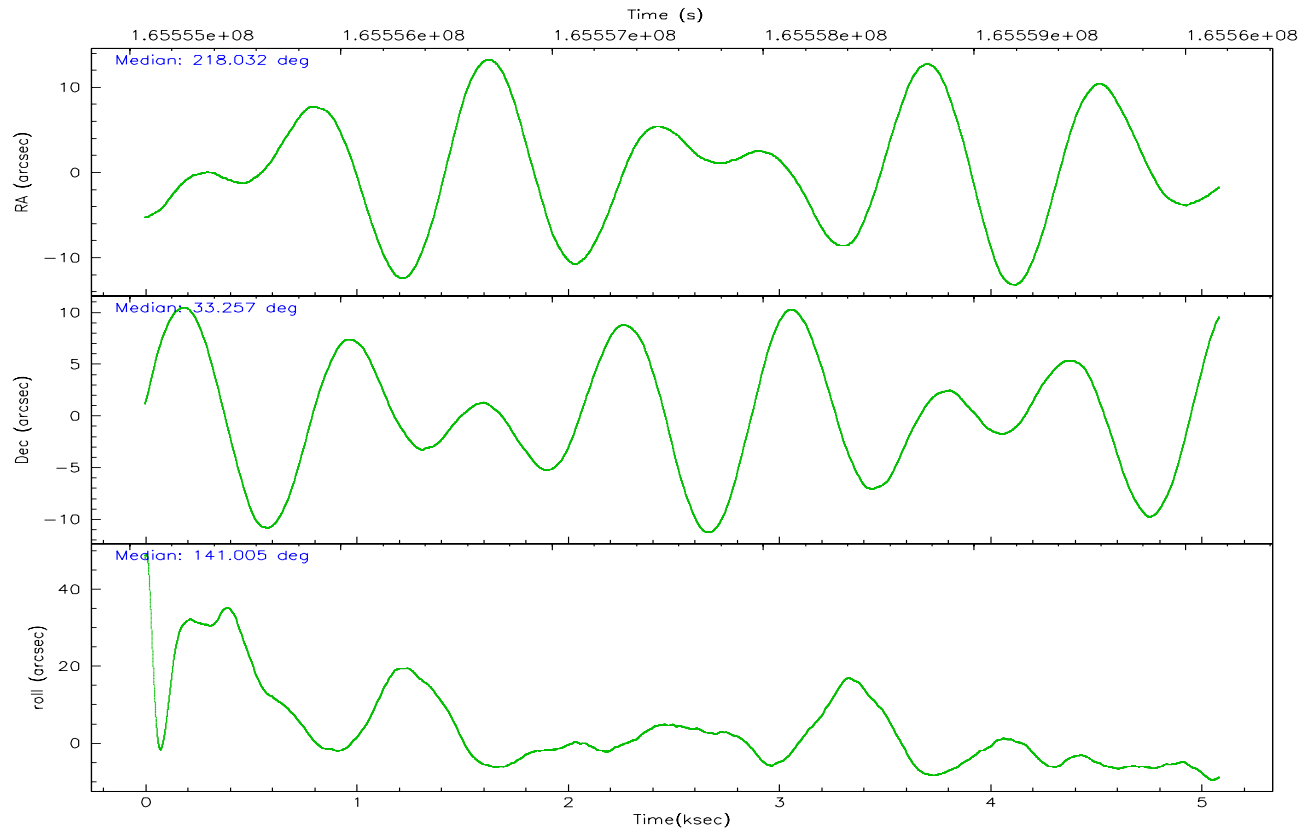
	ccd 0	ccd 1	ccd 2	ccd 3	ccd 6
grade 0 events	815	891	796	868	839
	3%	4%	3%	3%	3%
grade 1 events	13	12	11	6	7
	0%	0%	0%	0%	0%
grade 2 events	499	491	481	453	458
	2%	2%	1%	1%	2%
grade 3 events	295	259	294	249	249
	1%	1%	1%	1%	1%
grade 4 events	252	297	296	254	262
	1%	1%	1%	1%	1%
grade 5 events	598	745	657	764	747
	2%	3%	2%	3%	3%
grade 6 events	453	492	413	399	452
	2%	2%	1%	1%	2%
grade 7 events	18605	17469	21626	20555	19123
	86%	84%	88%	87%	86%

## 2.2 Compared Parameters

Parameter	Planned	Actual	Parameter	Planned	Actual
Instrument	ACIS	ACIS	Obspar format version number	6	6
Detector	ACIS-01236	ACIS-01236	Obspar file type	PREDICTED	ACTUAL
Grating	NONE	NONE	Obspar update status	NONE	UPDATED
Data mode	VFAINT	VFAINT	On-chip summing requested	N	N
Observation mode	POINTING	POINTING	Subarray requested	NONE	NONE
Pointing RA	218.063769	218.0313817118371	Alternating exposures requested	N	N
Pointing Dec	33.253137	33.25731787758825	Primary exposure time	0.000000	3.1
Pointing Roll	140.783686	141.0101535619694			
SIM focus pos (mm)	-0.782348	-0.7809083437167272			
SIM defocus (mm)	0	0.001439871863259334			
SIM translation stage pos (mm)	-233.592463	-233.5874344608287			
SIM translation stage offset (mm)	0	-0.005018542100998502			
Observation start time	165555254.184000	165554877.83187			
Observation start date	2003-04-01T03:33:10	2003-04-01T03:27:57			
Observation end time	165560154.184000	165560287.7821			
Observation end date	2003-04-01T04:54:50	2003-04-01T04:58:07			
Read mode	TIMED	TIMED			

## 2.3 Aspect



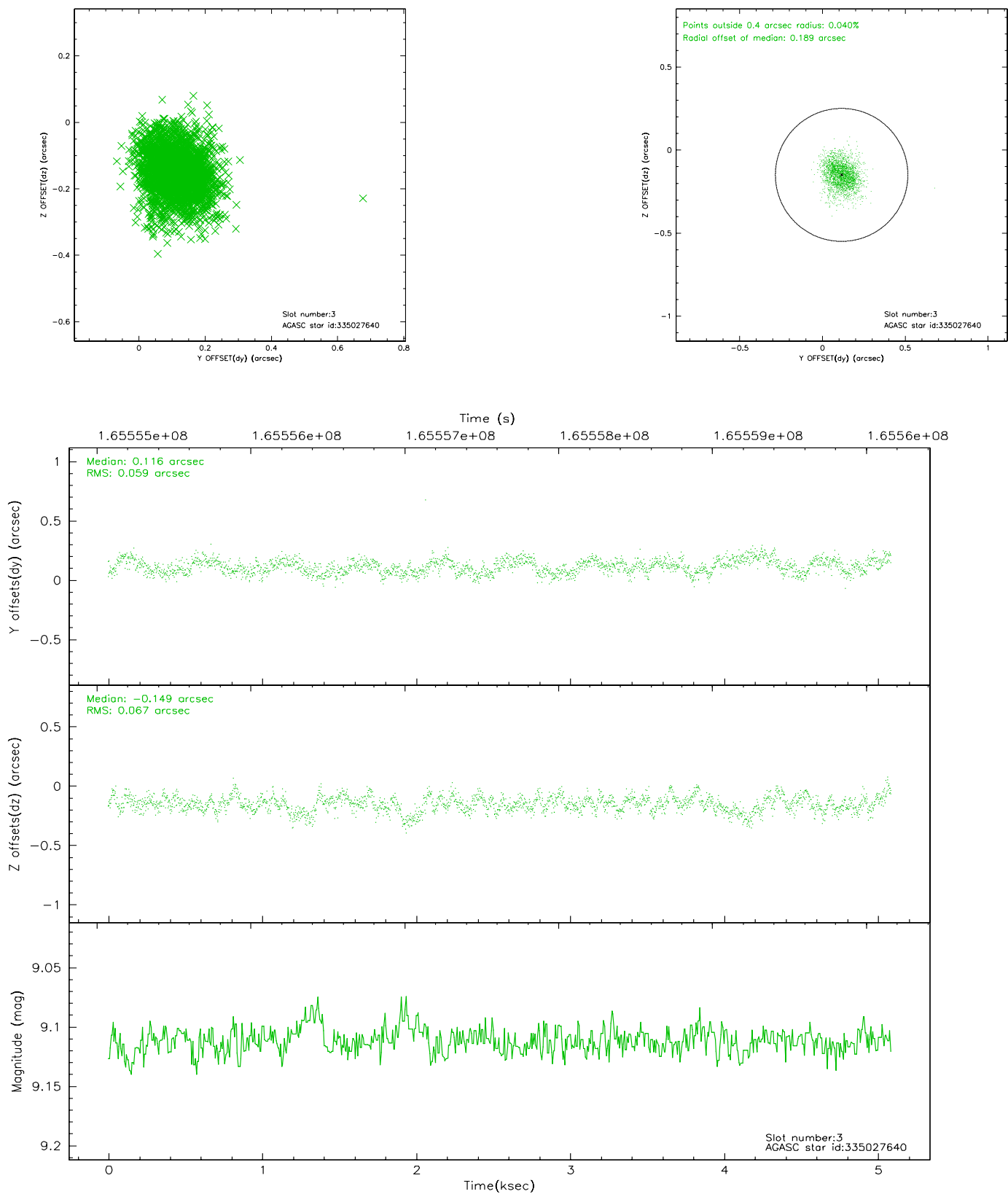


### Slot Statistics

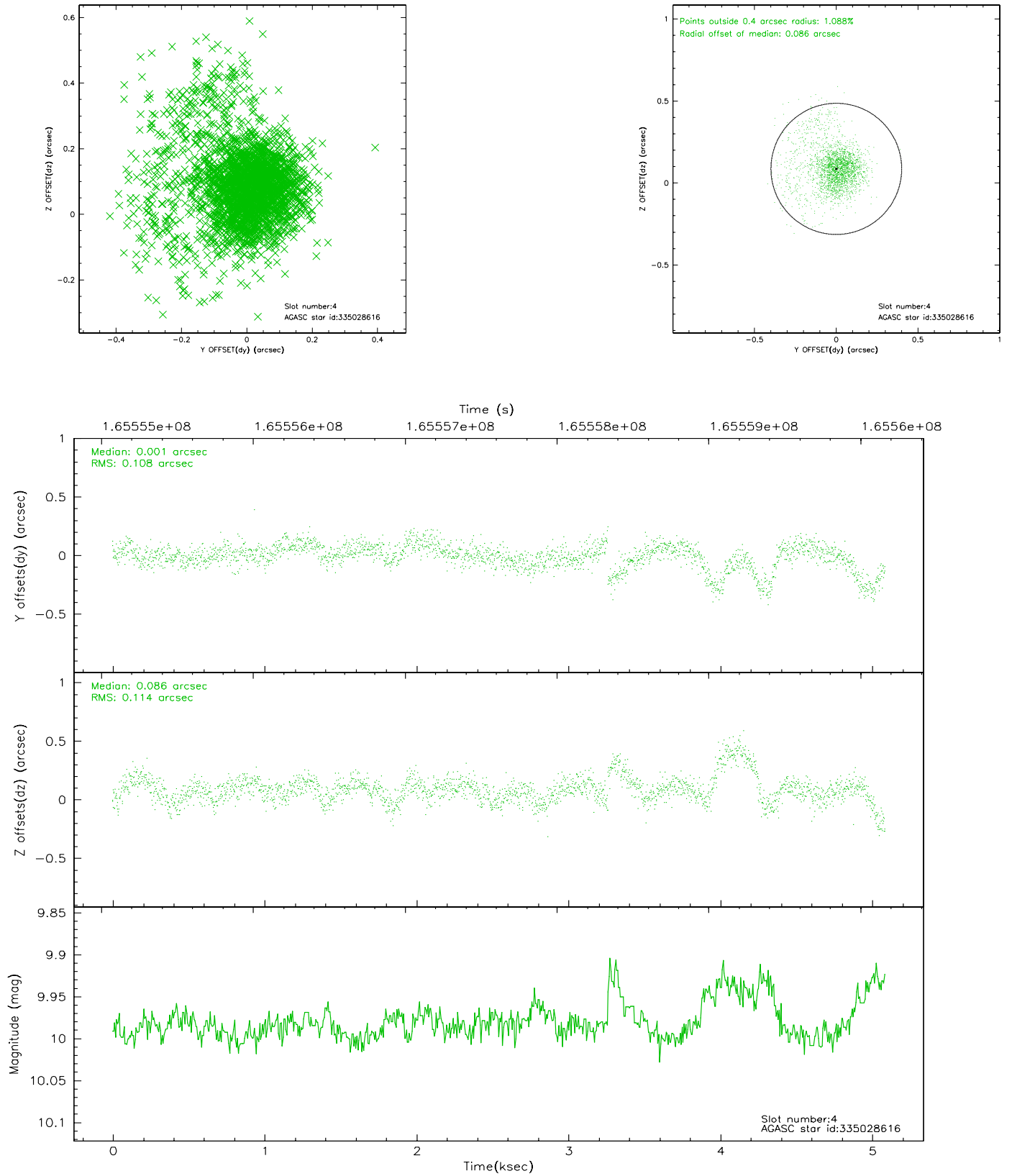
slot	status	id	mag	n_pts	med_dy	med_dz	dr1	dr2	ra	dec	mean_y	mean_z
0	FID	ACIS-I-1	7.24	1241	-0.005	0.020	0.006	0.010	0.000000	0.000000	937.05	-830.01
1	FID	ACIS-I-5	7.24	1241	-0.057	0.046	0.006	0.009	0.000000	0.000000	-1810.41	1066.96
2	FID	ACIS-I-6	7.26	1241	-0.030	0.004	0.006	0.011	0.000000	0.000000	401.32	1712.74
3	GUIDE	335027640	9.11	2478	0.116	-0.149	0.093	0.153	218.092211	33.193770	-201.19	111.48
4	GUIDE	335028616	9.98	2481	0.001	0.086	0.144	0.322	218.529874	33.175085	-1263.91	-672.25
5	GUIDE	335029368	10.13	2476	-0.059	-0.012	0.186	0.274	217.181018	33.065030	1641.85	2199.93
6	GUIDE	335029384	8.48	2481	-0.102	-0.041	0.087	0.155	217.848061	33.088477	130.29	871.23
7	GUIDE	335029528	10.40	2479	0.059	0.122	0.153	0.253	218.786422	33.290416	-1594.92	-1484.11

## 2.4 Star Slots

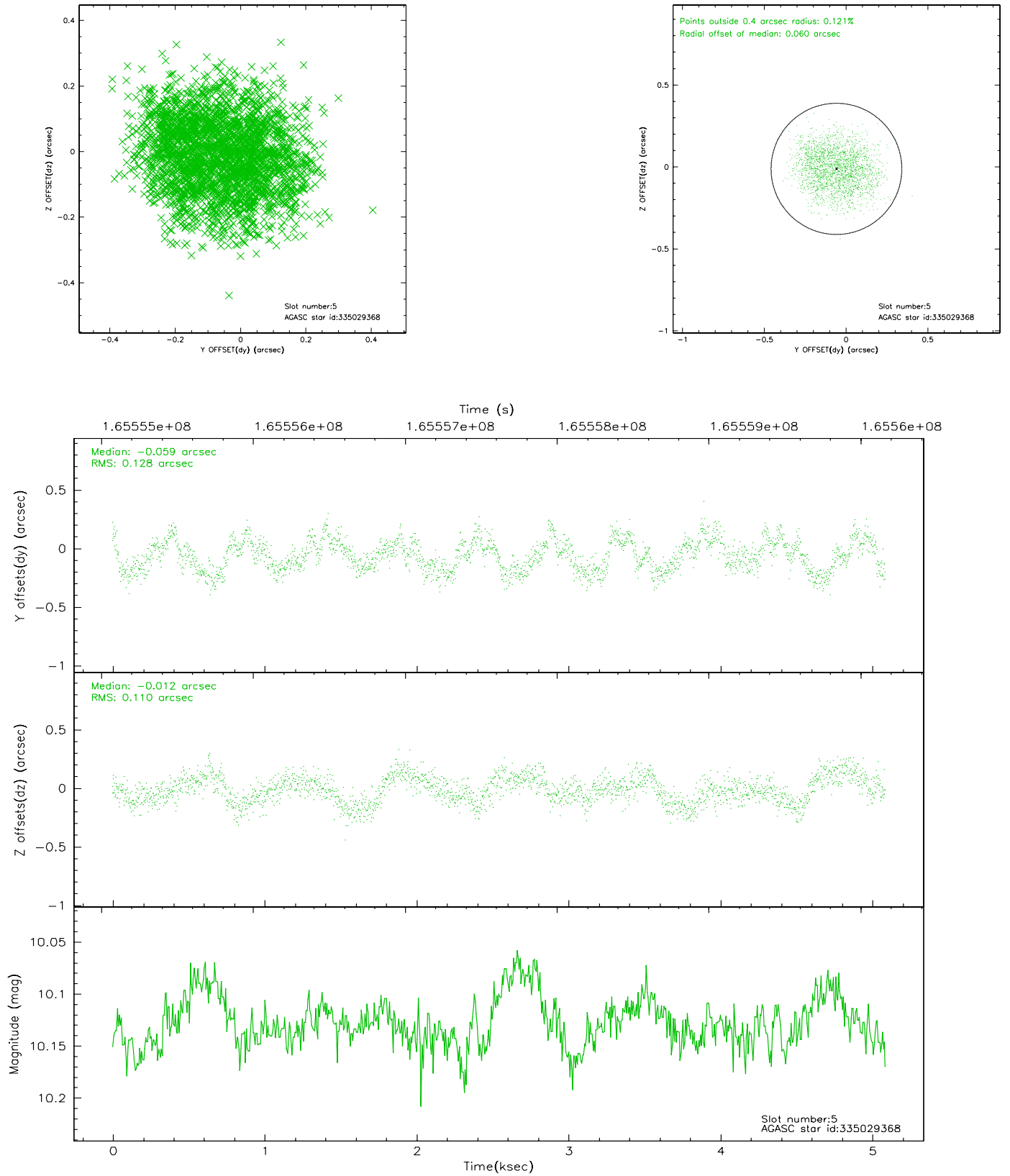
### 2.4.1 Slot 3



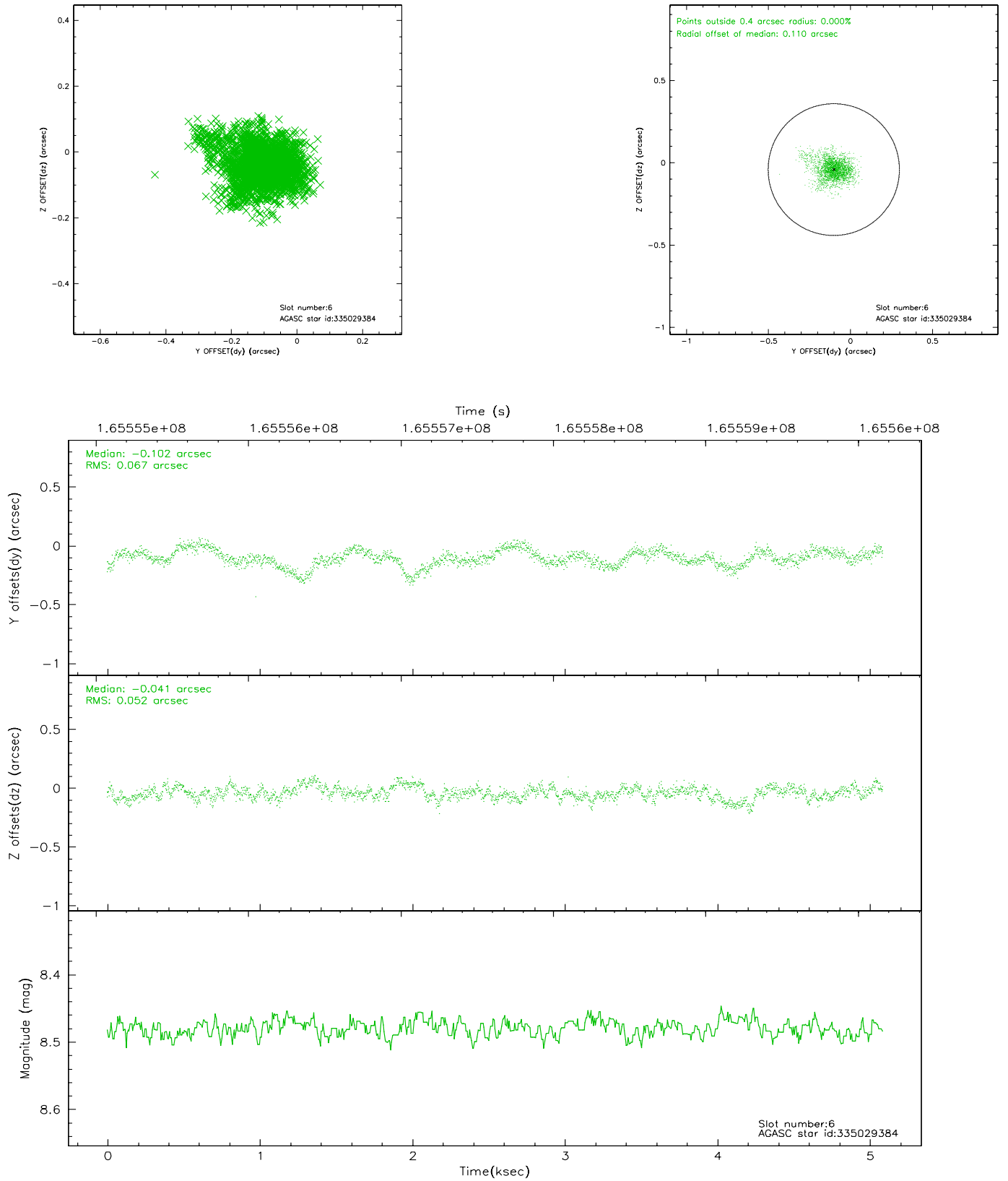
## 2.4.2 Slot 4



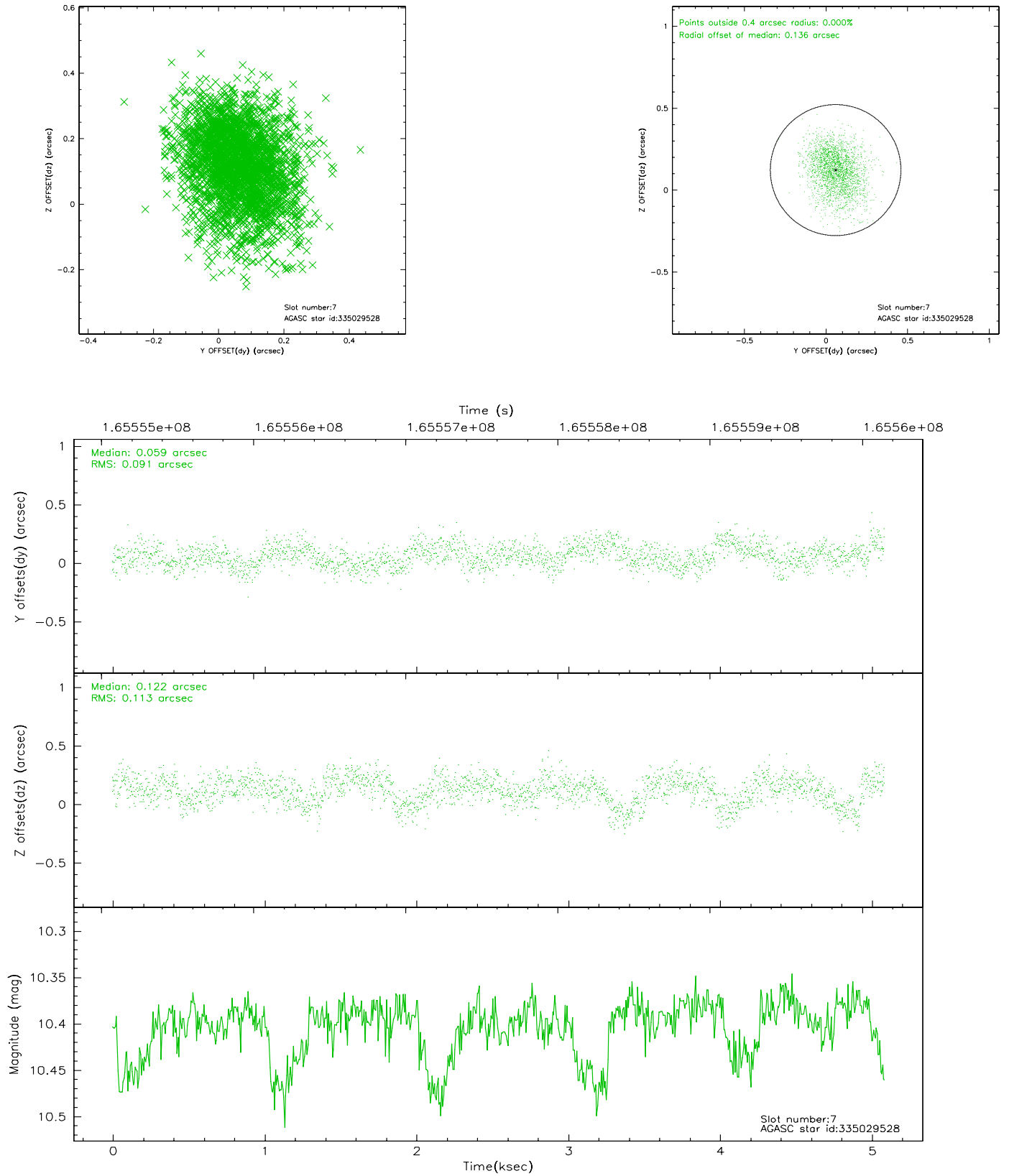
### 2.4.3 Slot 5



## 2.4.4 Slot 6

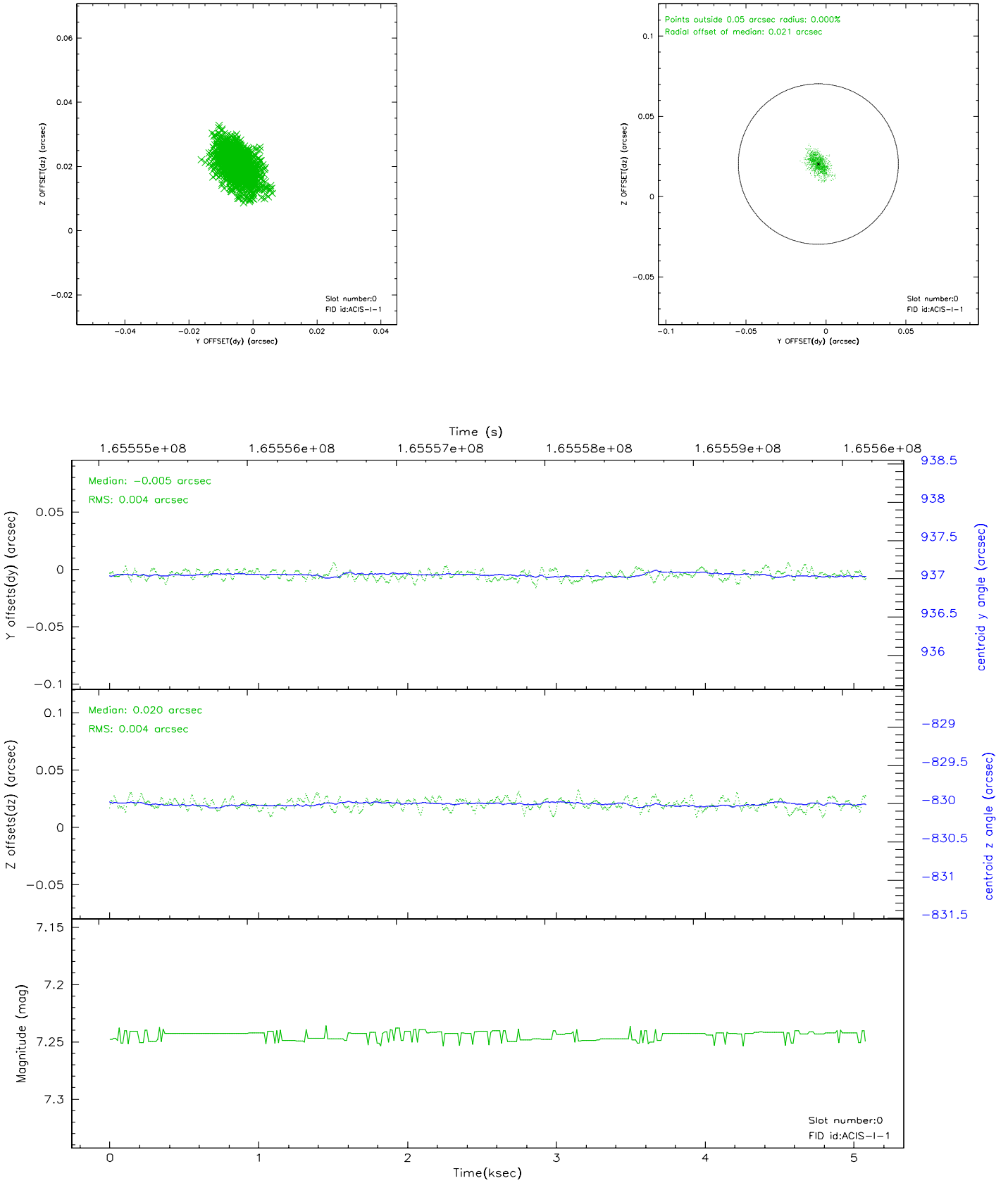


## 2.4.5 Slot 7

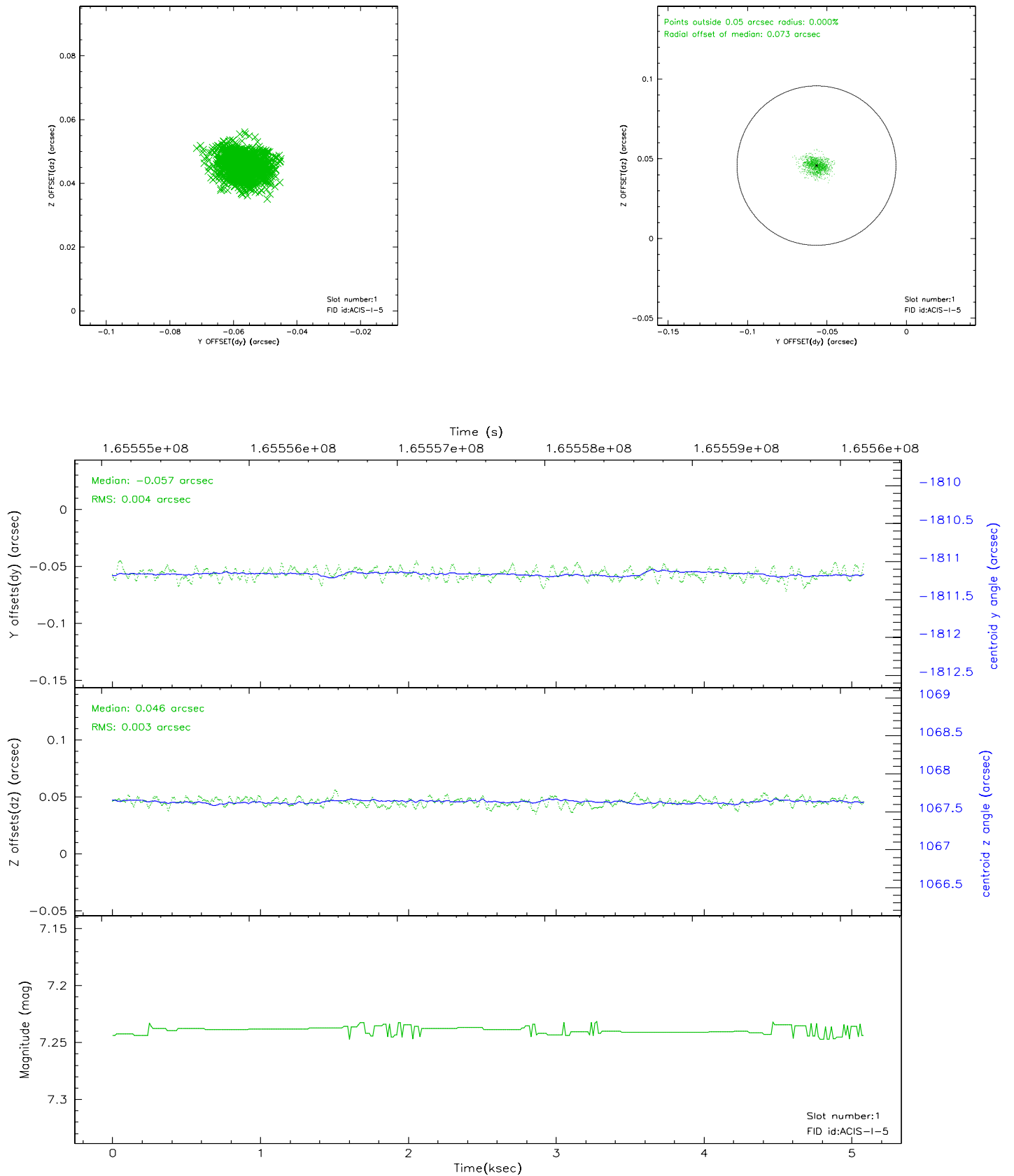


## 2.5 FID Slots

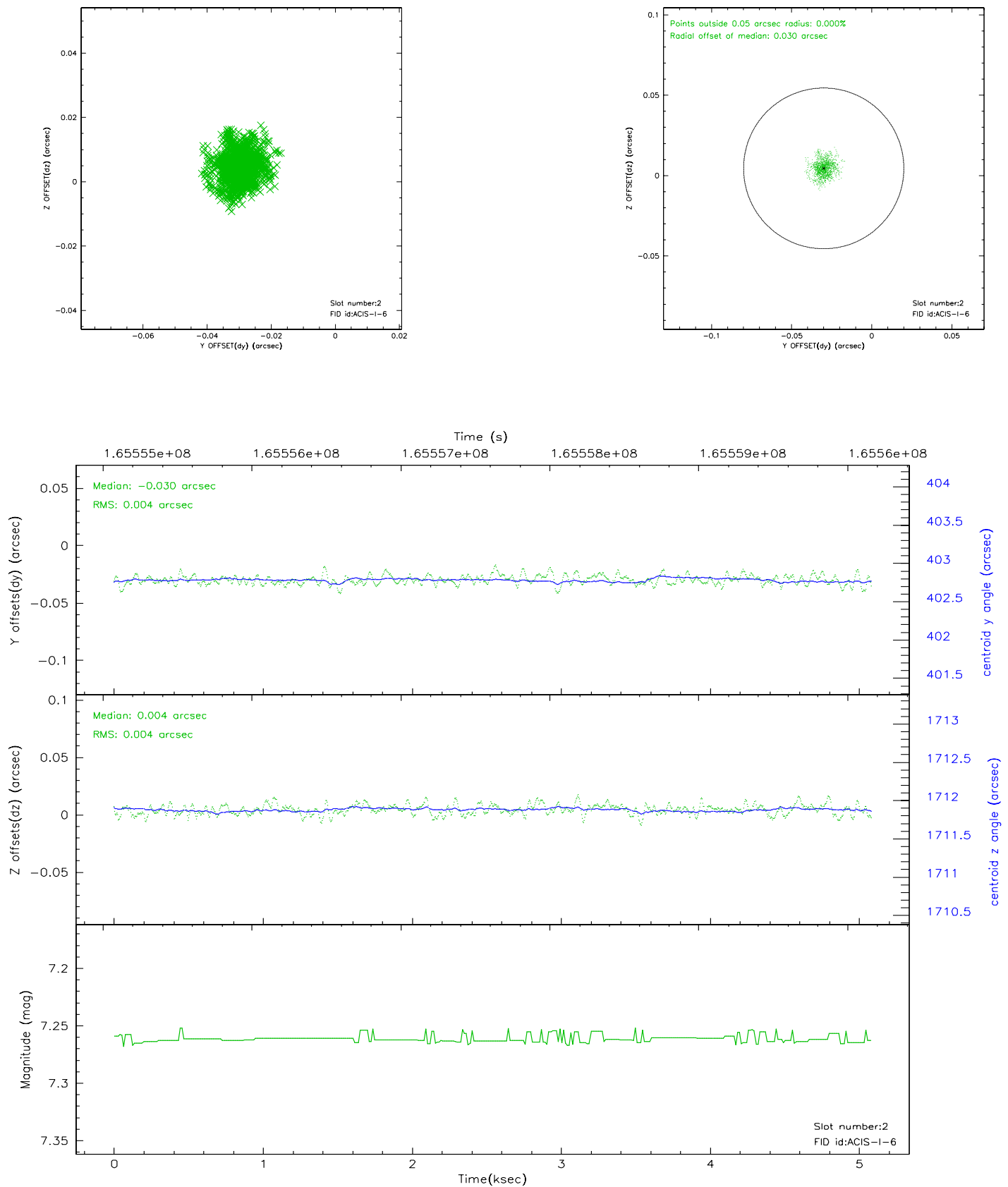
### 2.5.1 Slot 0



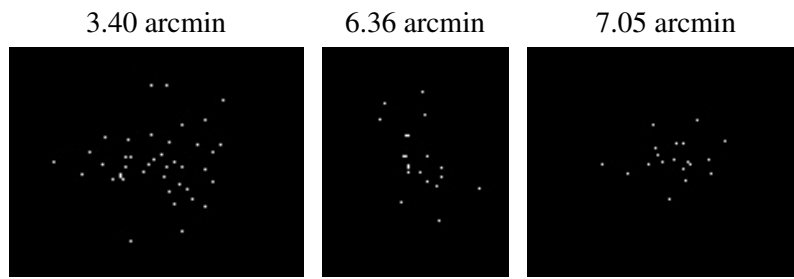
## 2.5.2 Slot 1



### 2.5.3 Slot 2



### 3 Point Sources



## A Summary

### A.1 Status

V&V Scientist	Jen Lauer
V&V Date (YYYY-MM-DD)	2006.07.30
V&V Edition	1
V&V Disposition and Status	OK
V&V Charge Time	4.674

### A.2 Comments