

V&V Reference Report

L2 ASCDS Version : 8.4.5

Observation 4232 - L2 Version 4
Chandra X-Ray Center

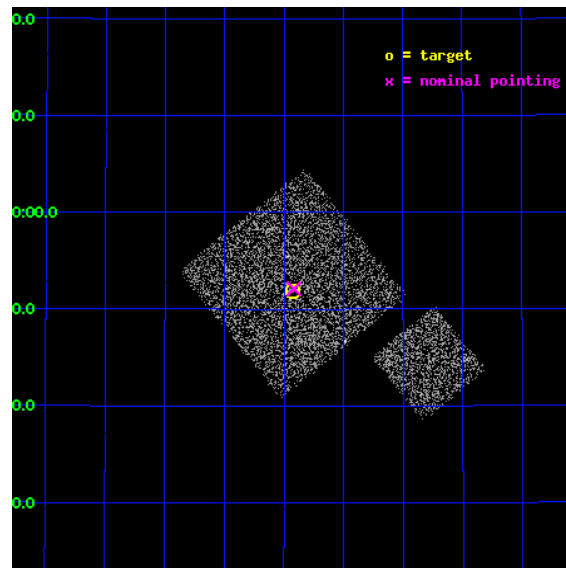
L2 Processing Date : Oct 25 2012

Contents

1	Front	2
2	OBI	3
2.1	OBI	3
2.1.1	Images	3
2.1.2	Bias	3
2.1.3	Parameters	4
2.1.4	Events	4
2.2	Compared Parameters	5
2.3	Aspect	6
2.4	Star Slots	9
2.4.1	Slot 3	9
2.4.2	Slot 4	10
2.4.3	Slot 5	11
2.4.4	Slot 6	12
2.4.5	Slot 7	13
2.5	FID Slots	14
2.5.1	Slot 0	14
2.5.2	Slot 1	15
2.5.3	Slot 2	16
A	Summary	17
A.1	Status	17
A.2	Comments	17

1 Front

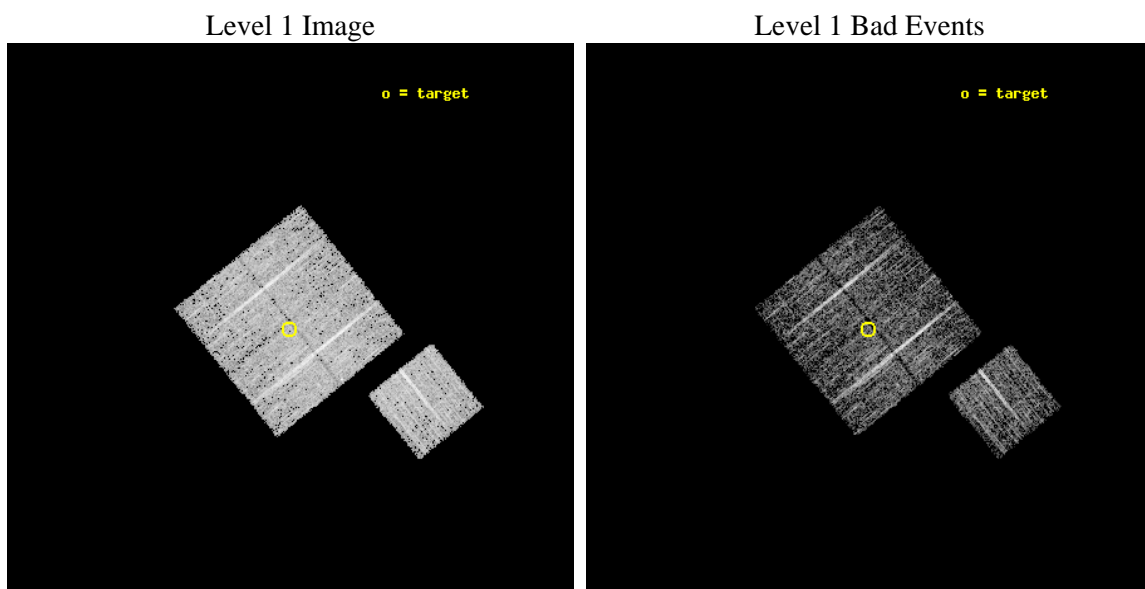
seq_num	900275	Sequence number
obs_id	4232	Observation id
title	A CHANDRA WIDE-FIELD SURVEY TO MAP THE COSMIC WEB AND INVESTIGATE THE EVOLUTION OF NUCLEAR ACCRETION	Proposal title
observer	Dr. Christine Jones	Principal investigator
object	SS3	Source name
dtcycle	0	
cycle	P	events from which exps? Prim/Second/Both
ra_targ	219.106748	Observer's specified target RA [deg]
dec_targ	33.864306	Observer's specified target Dec [deg]
ra_nom	219.1041326456	Nominal RA [deg]
dec_nom	33.868325583009	Nominal Dec [deg]
roll_nom	141.01011958118	Nominal Roll [deg]
revision	4	Processing version of data
ontime	4776.2831285	Sum of GTIs [s]
livetime	4713.8774731776	Livetime [s]
ontime0	4773.01903826	Sum of GTIs [s]
ontime1	4776.2010484934	Sum of GTIs [s]
ontime2	4776.2420884967	Sum of GTIs [s]
ontime3	4776.2831285	Sum of GTIs [s]
ontime6	4776.1189684868	Sum of GTIs [s]
l2events	9661	Number of level 2 events



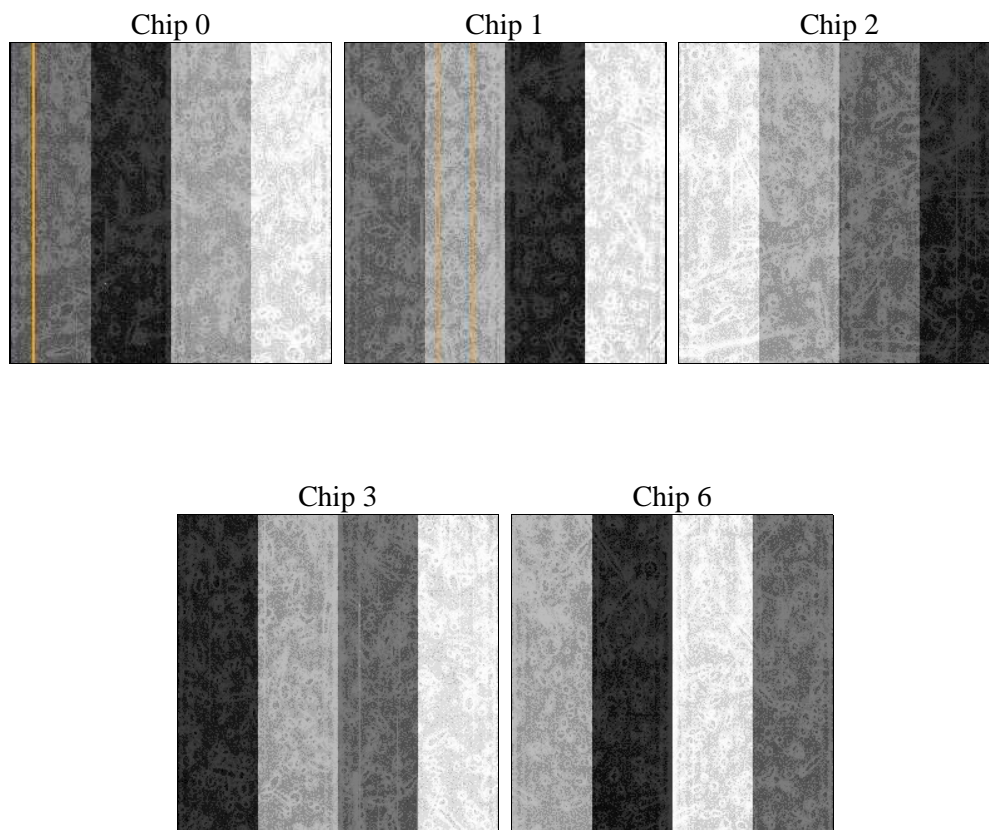
2 OBI

2.1 OBI

2.1.1 Images



2.1.2 Bias



2.1.3 Parameters

obi_num	1	Obi number	sched_exp_time	5000.000000	[s] Scheduled observation exposure time
ascdsver	8.4.5	Processing system revision	ontime	4776.2831285	Sum of GTIs [s]
caldsver	4.5.2	 	ontime0	4773.01903826	Sum of GTIs [s]
date	2012-10-25T23:44:39	Date and time of file creation	ontime1	4776.2010484934	Sum of GTIs [s]
revision	4	Processing version of data	ontime2	4776.2420884967	Sum of GTIs [s]
			ontime3	4776.2831285	Sum of GTIs [s]
			ontime6	4776.1189684868	Sum of GTIs [s]
			l1events	120849	Number of level 1 events

2.1.4 Events

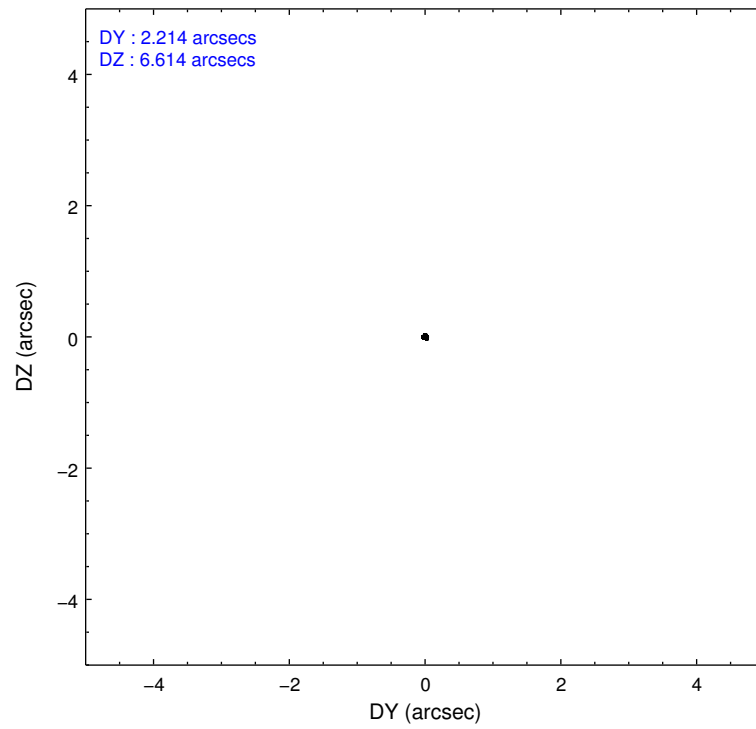
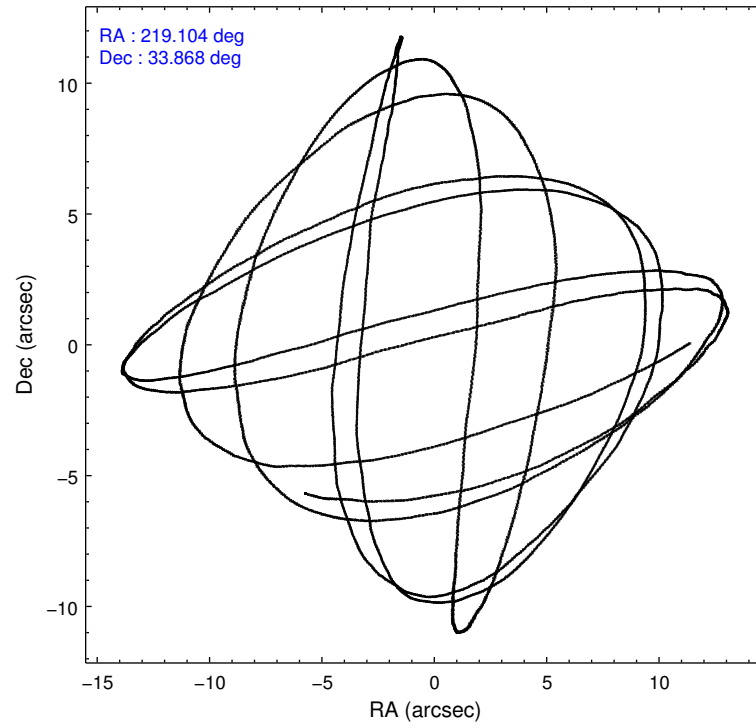
	ccd 0	ccd 1	ccd 2	ccd 3	ccd 6
level 1 events	22114	22672	25119	25060	25884
rejected events	19790	20233	22704	22807	23486
rejected %	89%	89%	90%	91%	90%

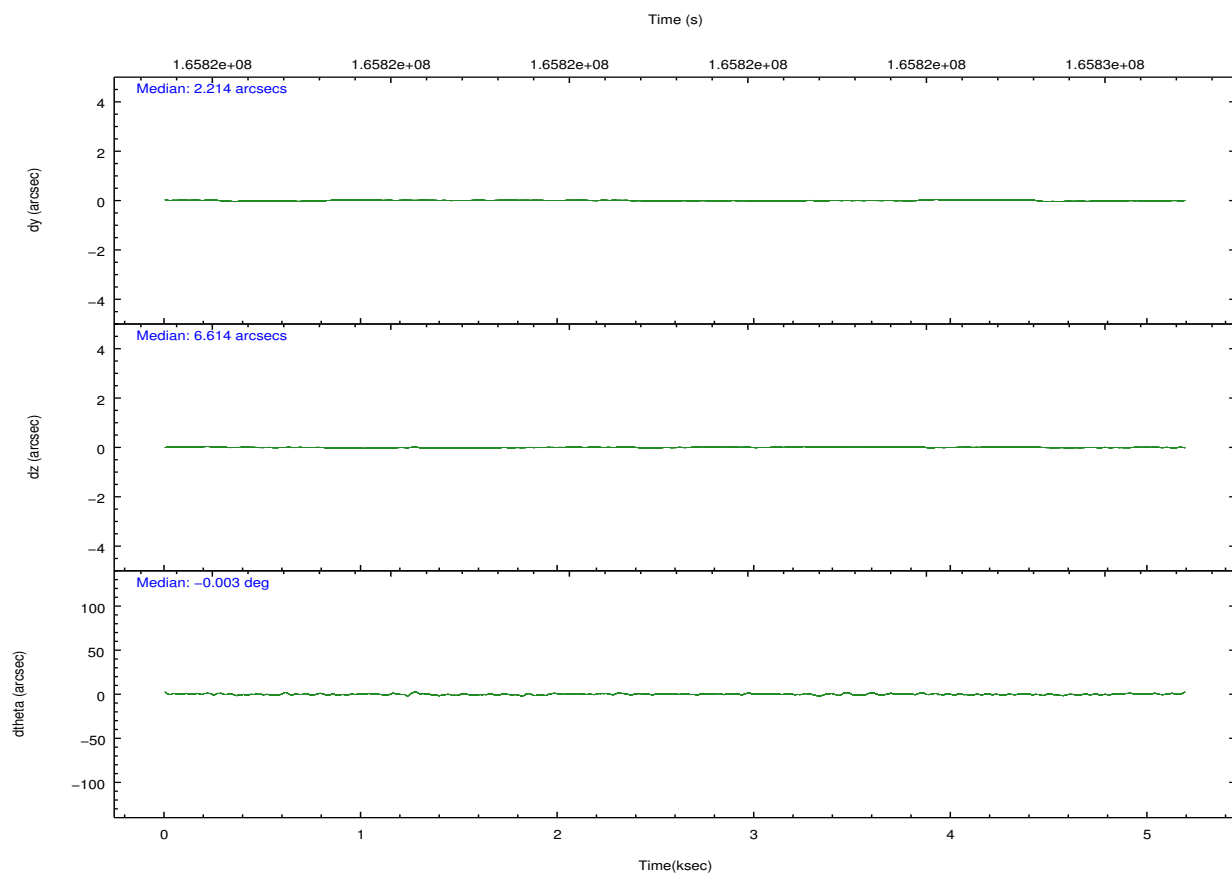
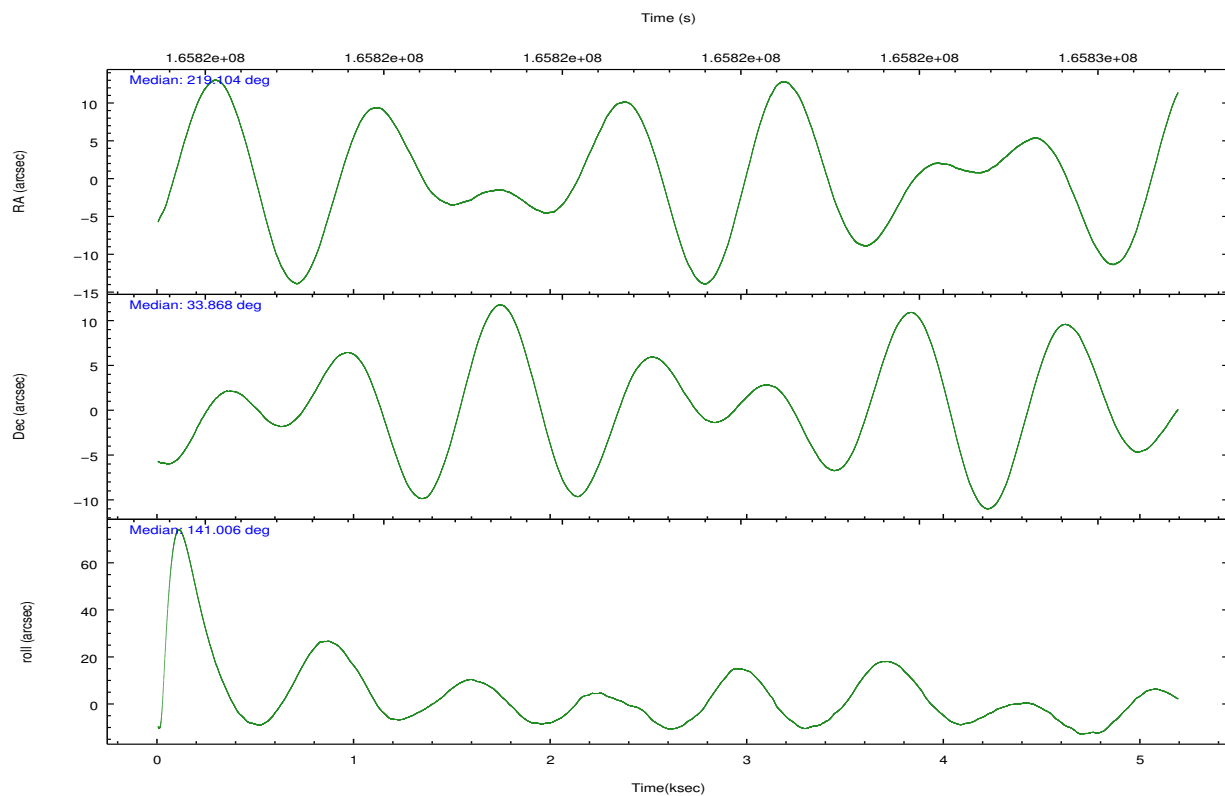
	ccd 0	ccd 1	ccd 2	ccd 3	ccd 6
grade 0 events	862	856	929	818	855
	3%	3%	3%	3%	3%
grade 1 events	8	13	14	10	6
	0%	0%	0%	0%	0%
grade 2 events	507	507	544	512	505
	2%	2%	2%	2%	1%
grade 3 events	276	278	259	277	287
	1%	1%	1%	1%	1%
grade 4 events	257	298	276	257	284
	1%	1%	1%	1%	1%
grade 5 events	666	781	646	781	764
	3%	3%	2%	3%	2%
grade 6 events	424	500	409	390	468
	1%	2%	1%	1%	1%
grade 7 events	19114	19439	22042	22015	22715
	86%	85%	87%	87%	87%

2.2 Compared Parameters

Parameter	Planned	Actual	Parameter	Planned	Actual
Instrument	ACIS	ACIS	Obspar format version number	7	7
Detector	ACIS-01236	ACIS-01236	Obspar file type	PREDICTED	ACTUAL
Grating	NONE	NONE	Obspar update status	NONE	UPDATED
Data mode	VFAINT	VFAINT	Number of optional ACIS chips dropped	0	0
Observation mode	POINTING	POINTING	On-chip summing requested	N	N
[deg] Pointing RA	219.136709	219.1041326456002	Subarray requested	NONE	NONE
[deg] Pointing Dec	33.864225	33.8683255830092	Alternating exposures requested	N	N
[deg] Pointing Roll	140.783308	141.0101195811763	[s] Primary exposure time	0.000000	3.1
[mm] SIM focus pos	-0.782348	-0.7809083437167272			
[mm] SIM defocus	0	0.001439871863259334			
[mm] SIM translation stage pos	-233.592463	-233.5874344608287			
[mm] SIM translation stage offset	0	-0.005018542100998502			
[s] Observation start time (MET)	165821185.184000	165820808.96809			
Observation start date	2003-04-04T05:25:21	2003-04-04T05:20:08			
[s] Observation end time (MET)	165826185.184000	165826319.36832			
Observation end date	2003-04-04T06:48:41	2003-04-04T06:51:59			
Read mode	TIMED	TIMED			

2.3 Aspect



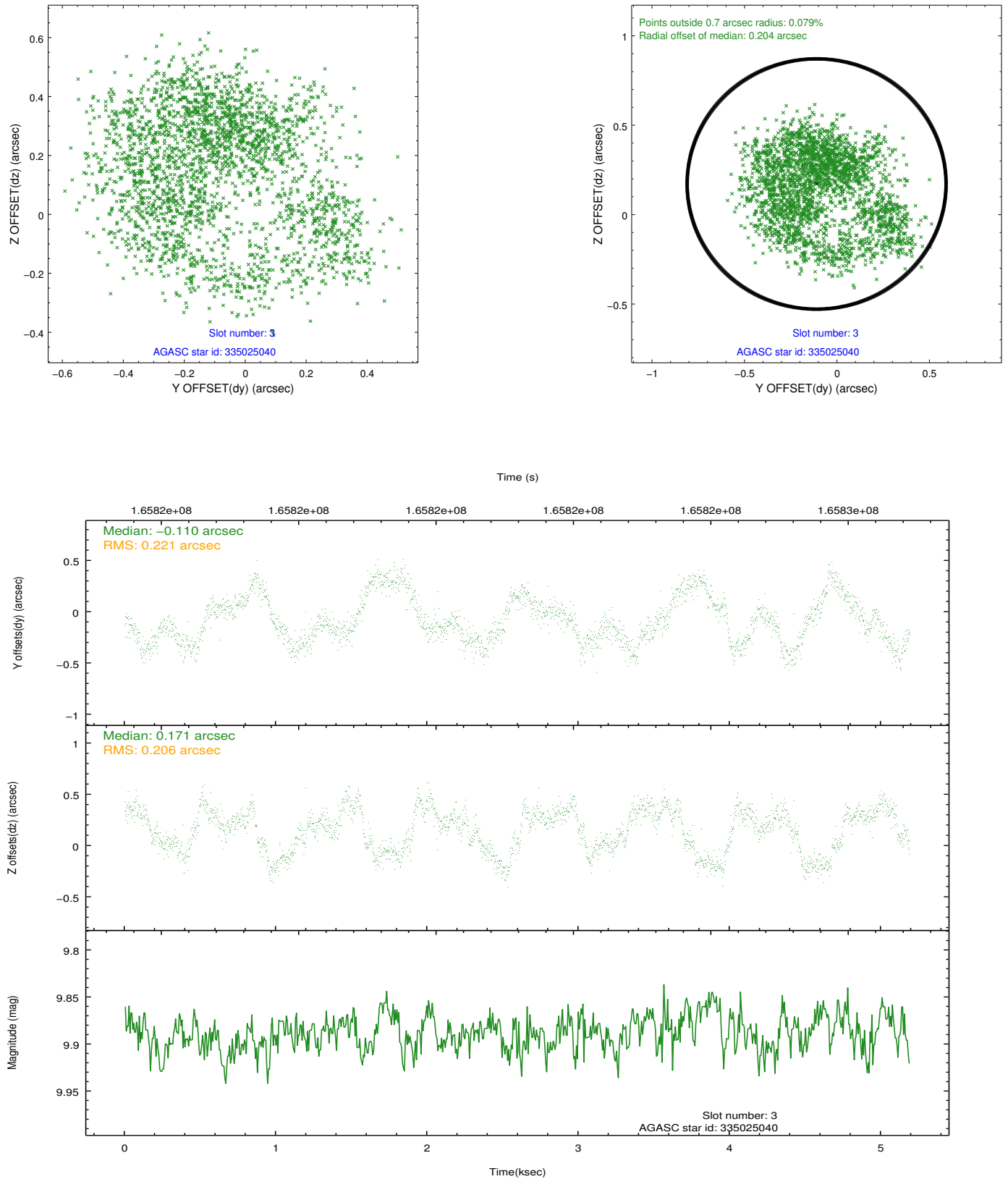


Slot Statistics

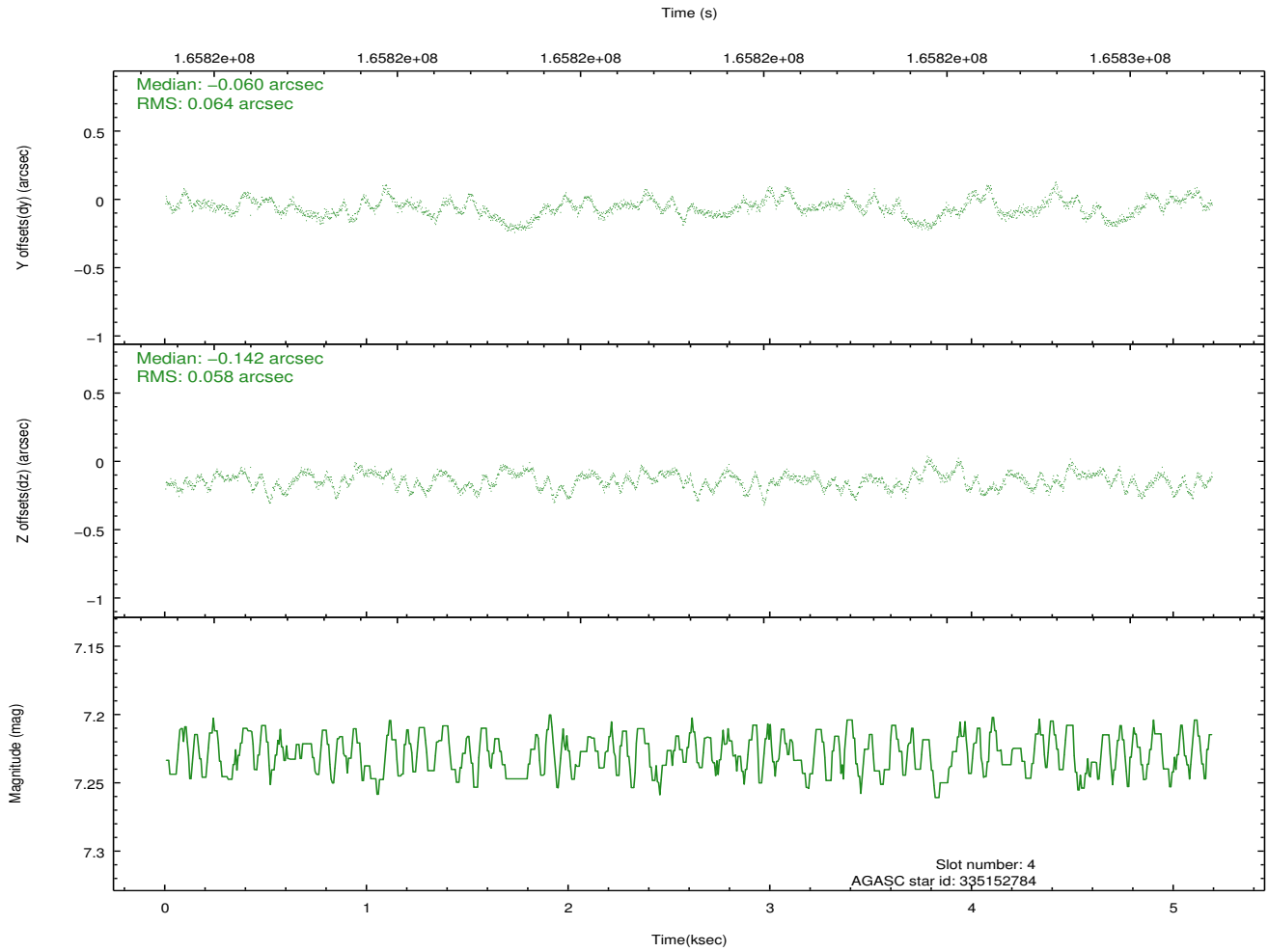
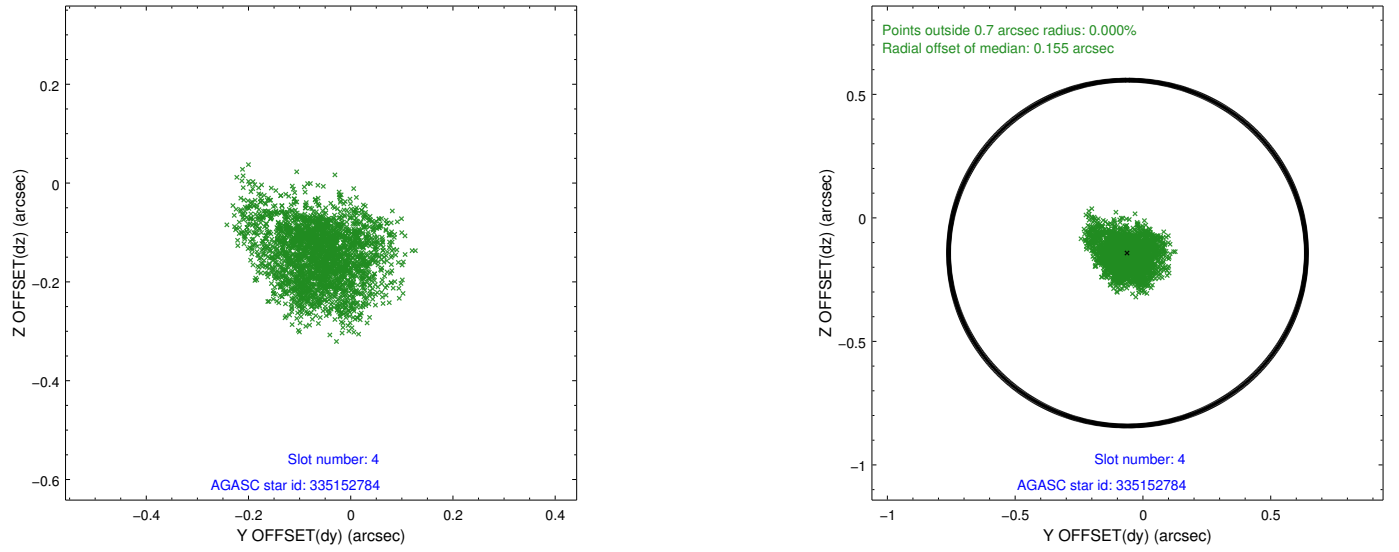
slot	status	id	mag	n_pts	med_dy	med_dz	dr1	dr2	ra	dec	mean_y	mean_z
0	FID	ACIS-I-2	7.15	1266	-0.048	-0.098	0.009	0.016	0.000000	0.000000	-756.61	-836.46
1	FID	ACIS-I-4	7.18	1265	0.050	0.060	0.007	0.011	0.000000	0.000000	2157.00	1069.31
2	FID	ACIS-I-5	7.23	1266	-0.104	0.106	0.009	0.015	0.000000	0.000000	-1809.01	1068.50
3	GUIDE	335025040	9.89	2530	-0.110	0.171	0.332	0.502	218.601670	34.305240	2239.59	-227.00
4	GUIDE	335152784	7.23	2532	-0.060	-0.142	0.093	0.149	219.280617	33.678221	-755.97	245.79
5	GUIDE	335154960	9.57	2529	0.196	0.051	0.120	0.185	219.209961	33.303073	-1448.21	1425.75
6	GUIDE	335155824	8.93	2532	-0.050	0.072	0.120	0.180	219.689900	34.035435	-886.15	-1523.76
7	GUIDE	335157088	9.09	2521	0.003	-0.125	0.095	0.149	219.274029	33.726909	-630.82	122.13

2.4 Star Slots

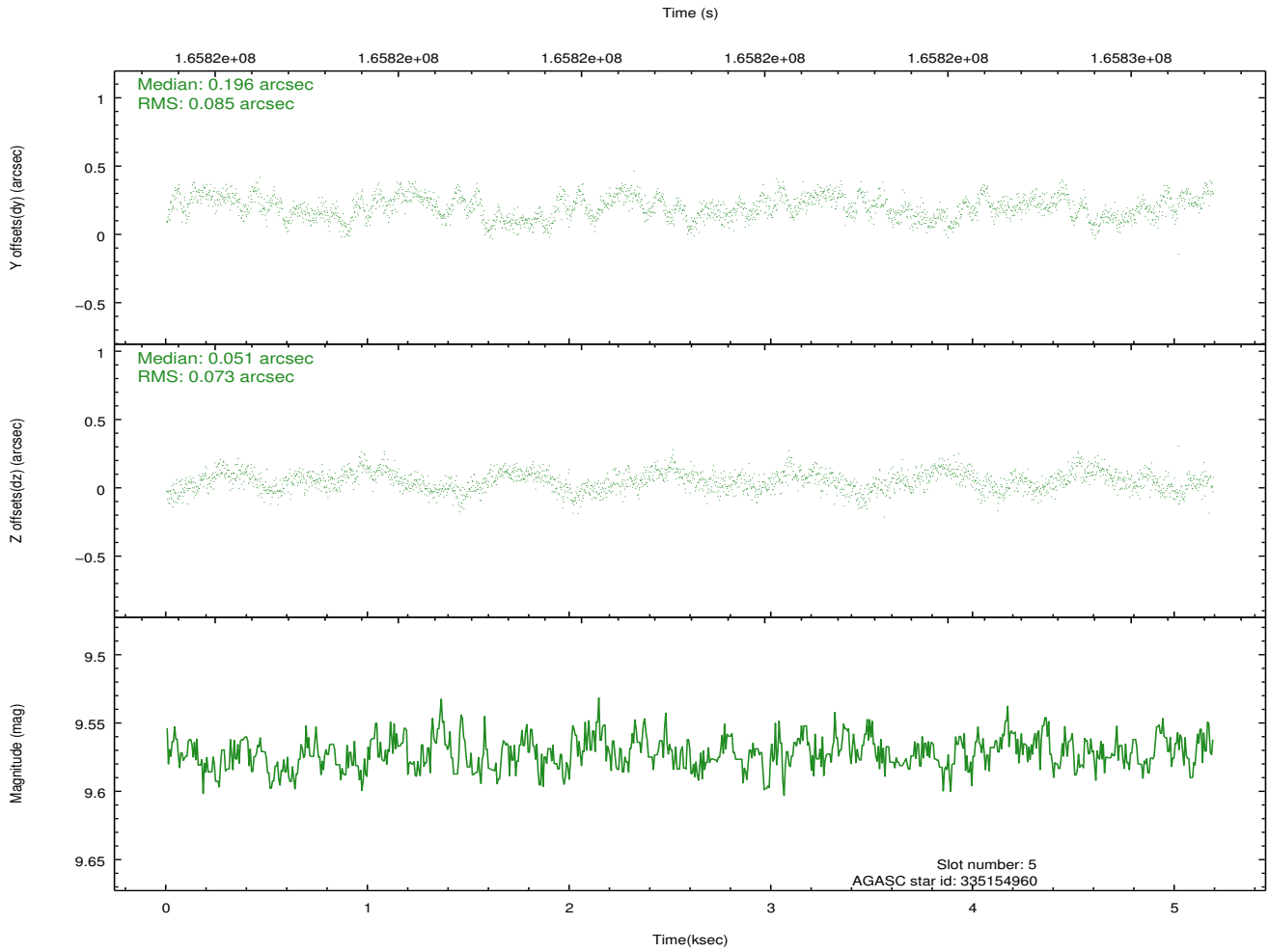
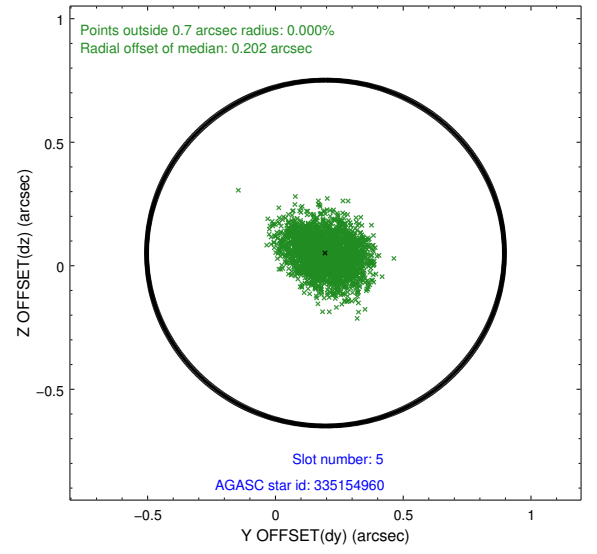
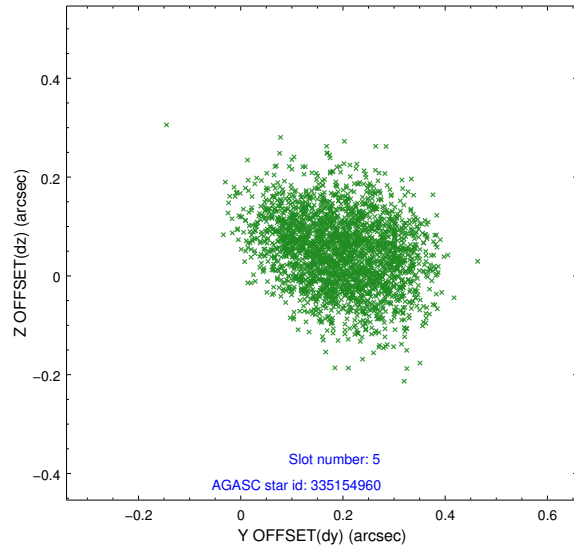
2.4.1 Slot 3



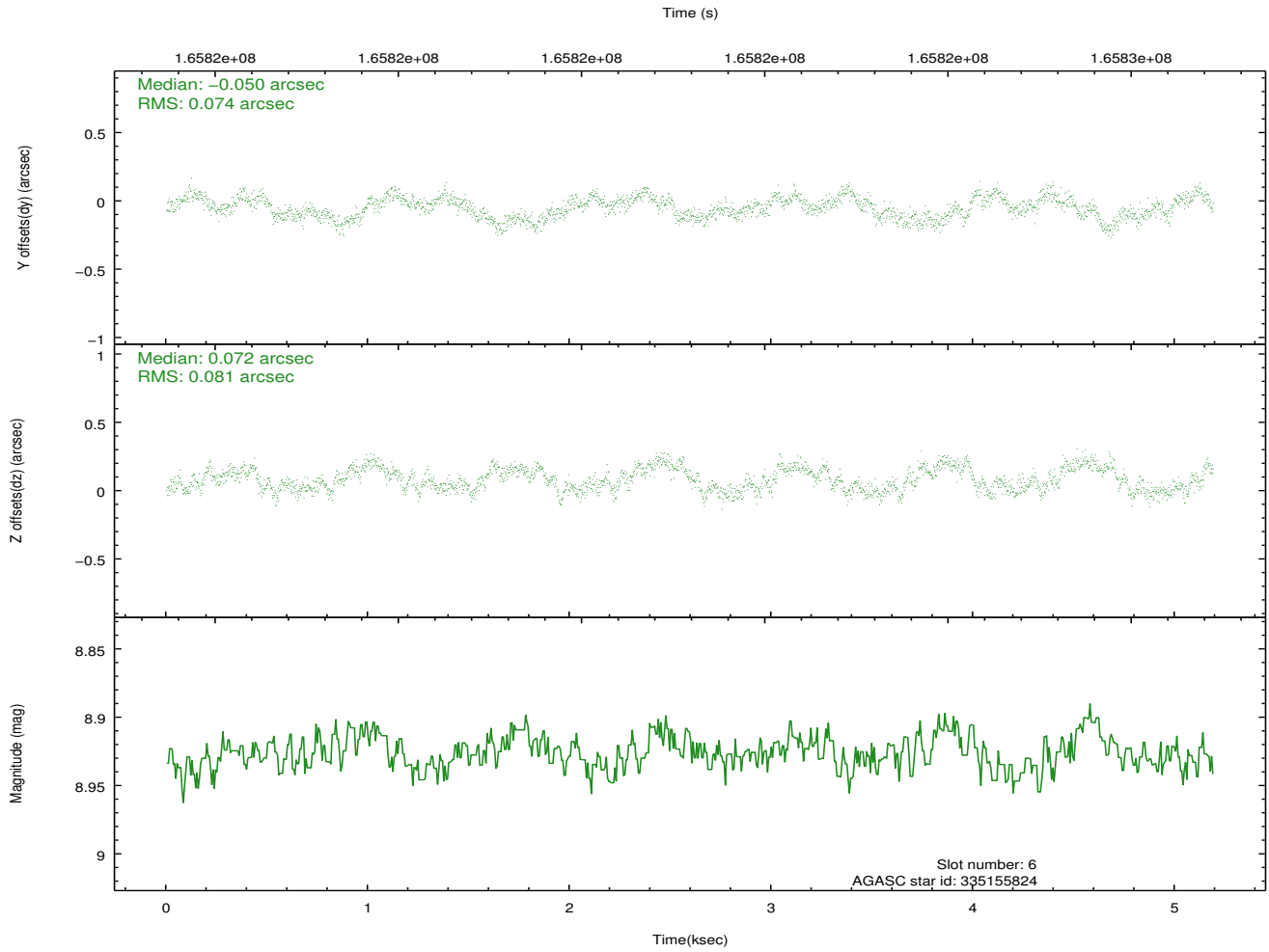
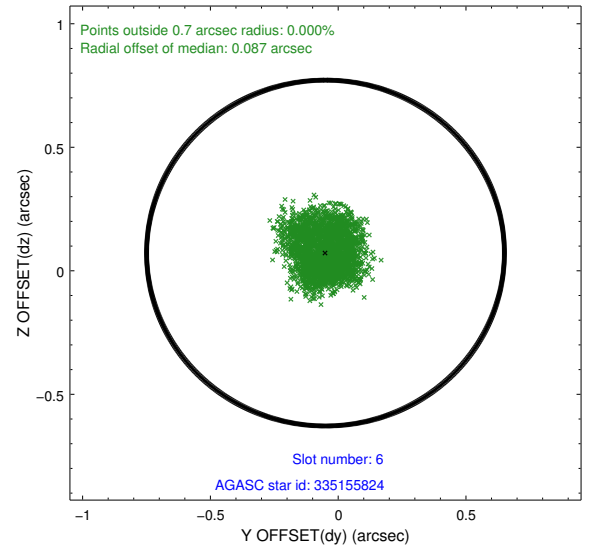
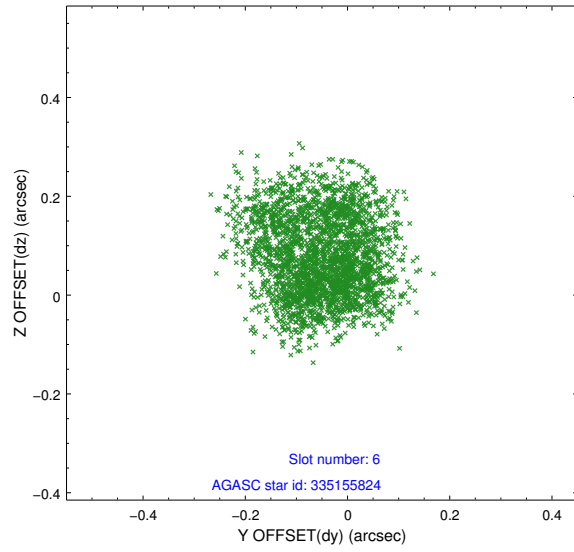
2.4.2 Slot 4



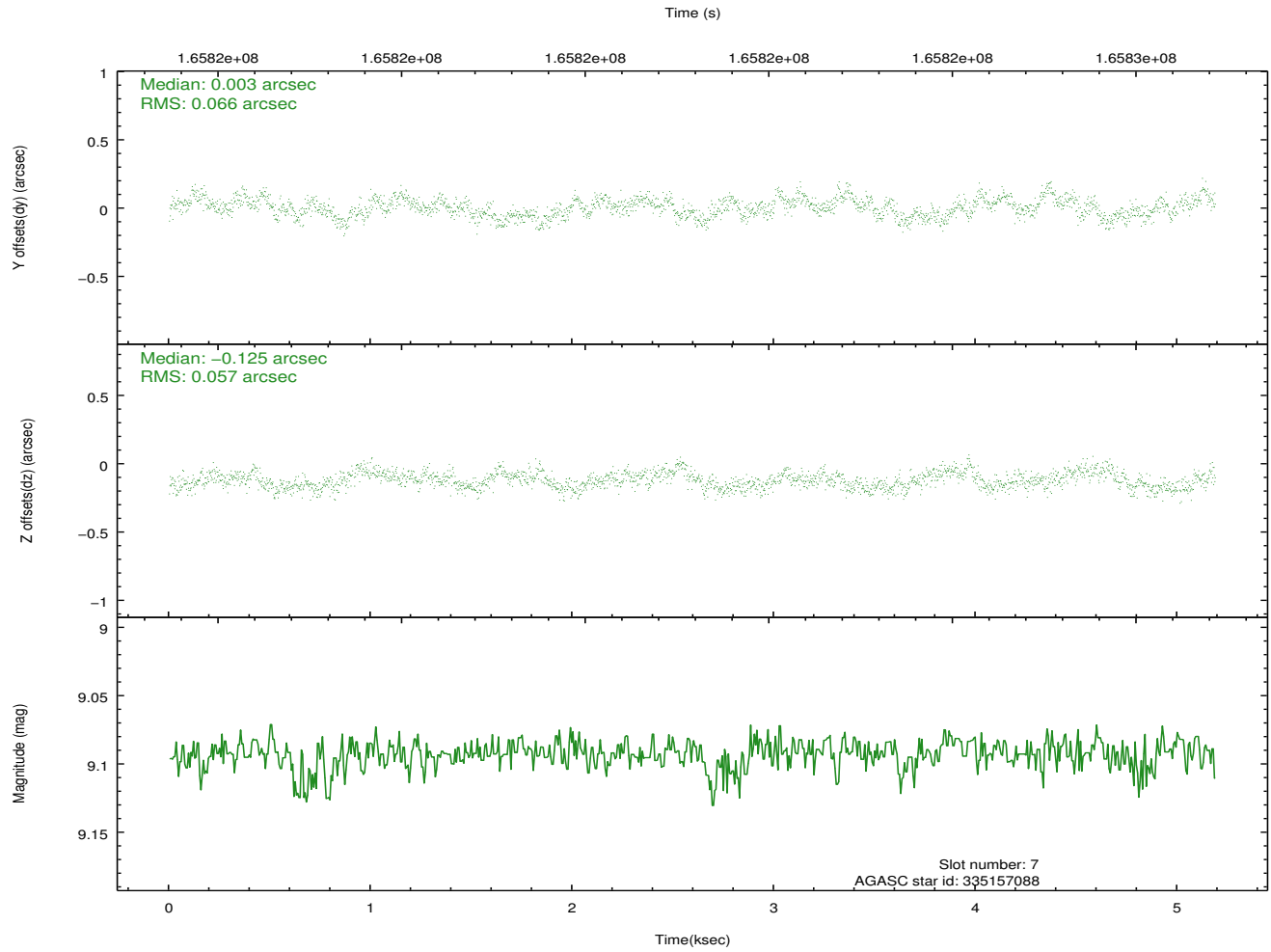
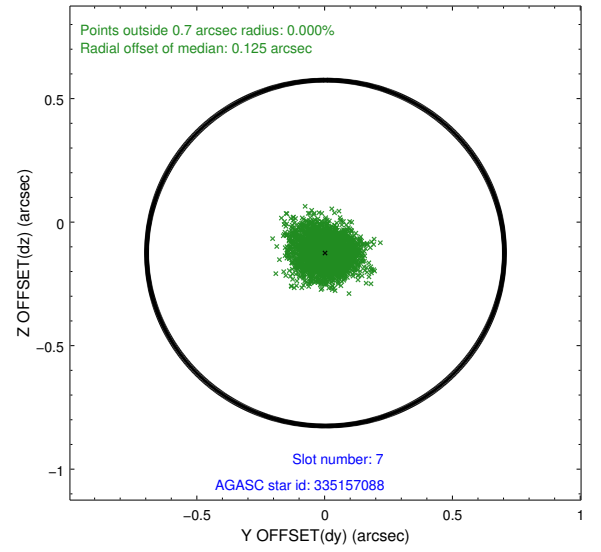
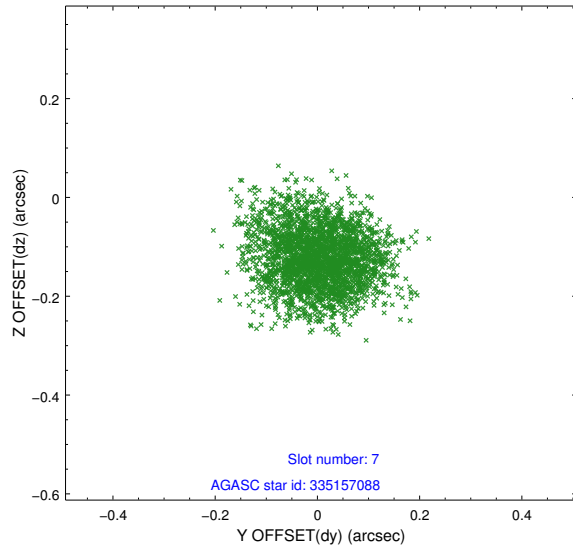
2.4.3 Slot 5



2.4.4 Slot 6

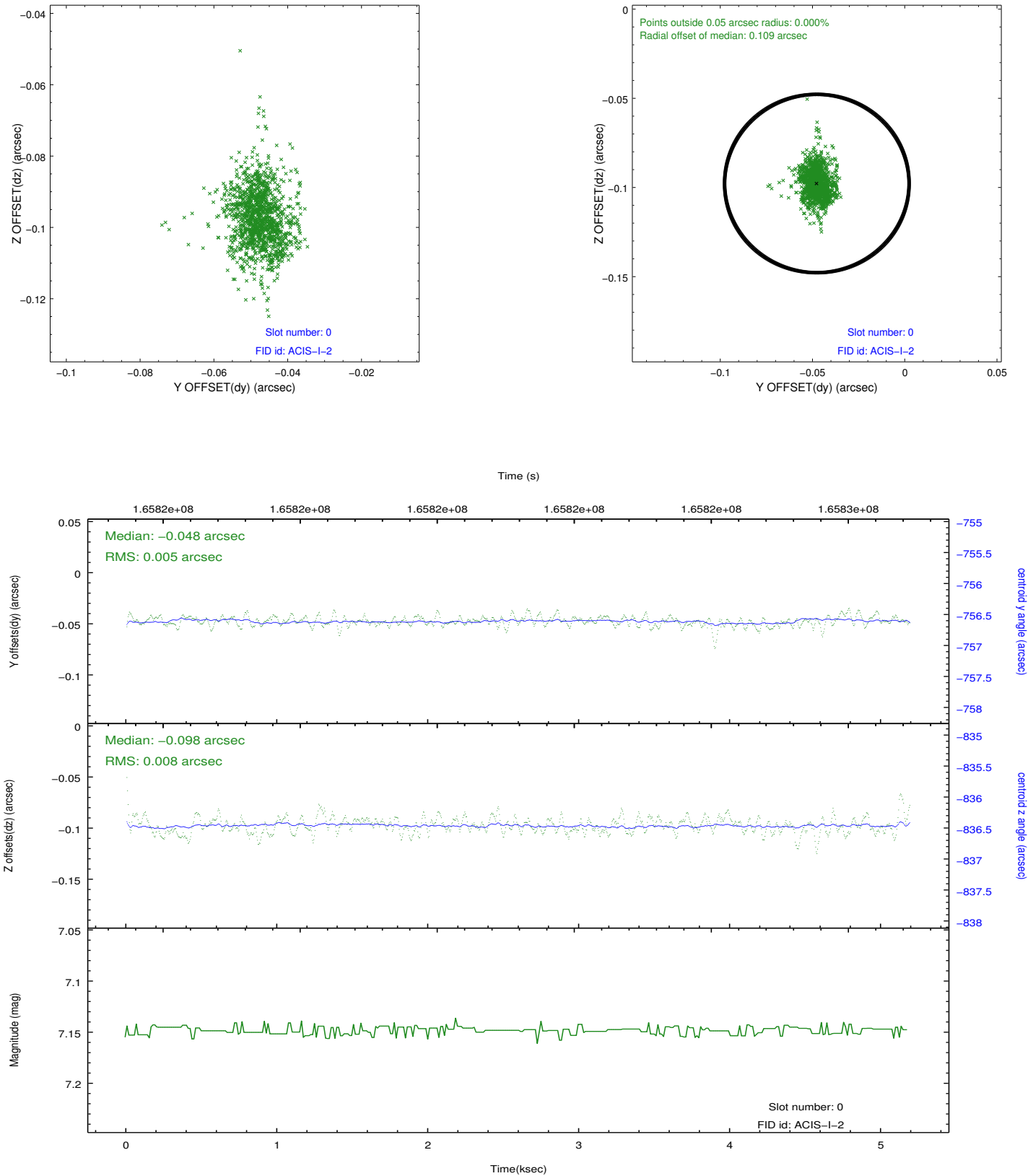


2.4.5 Slot 7

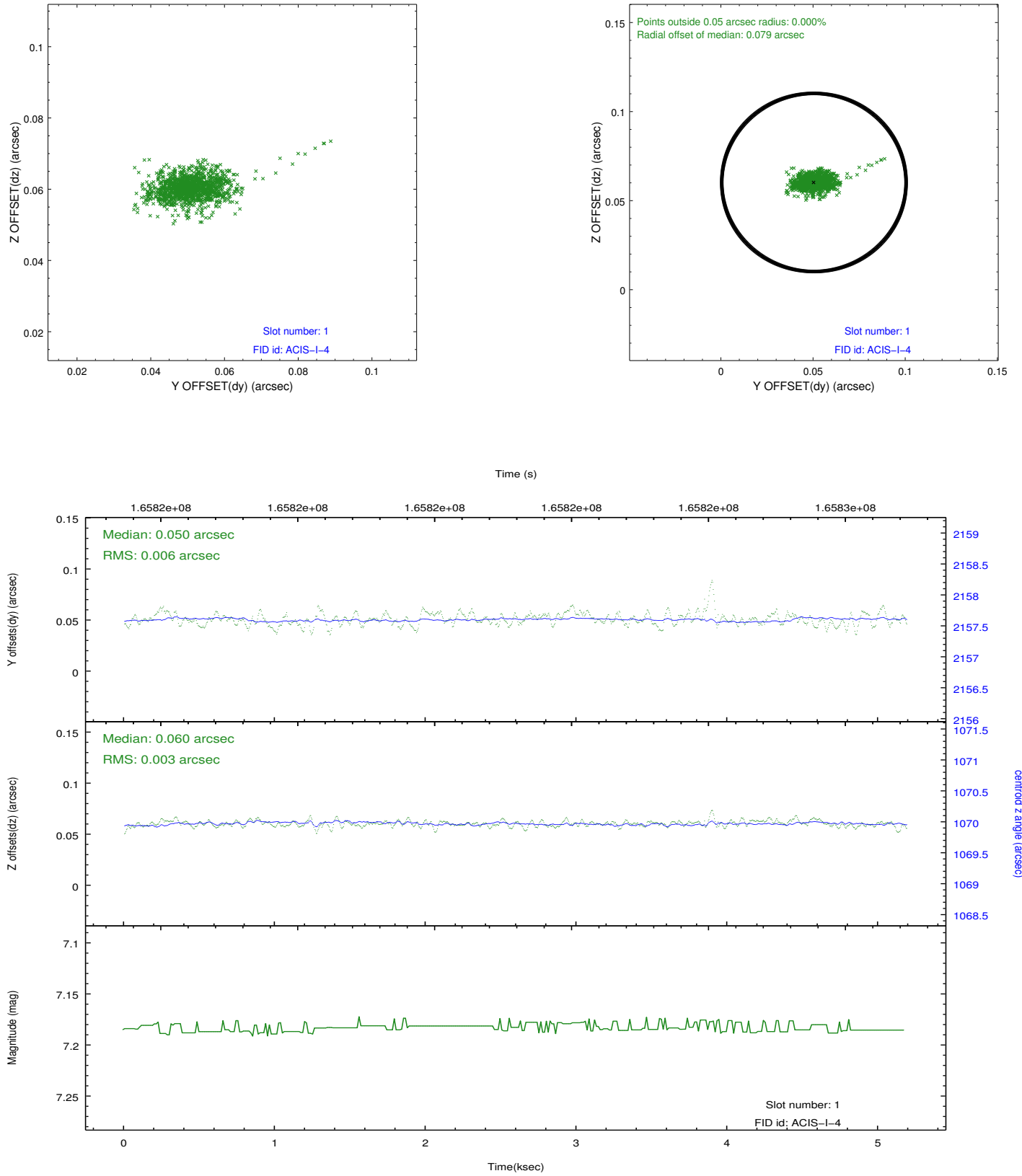


2.5 FID Slots

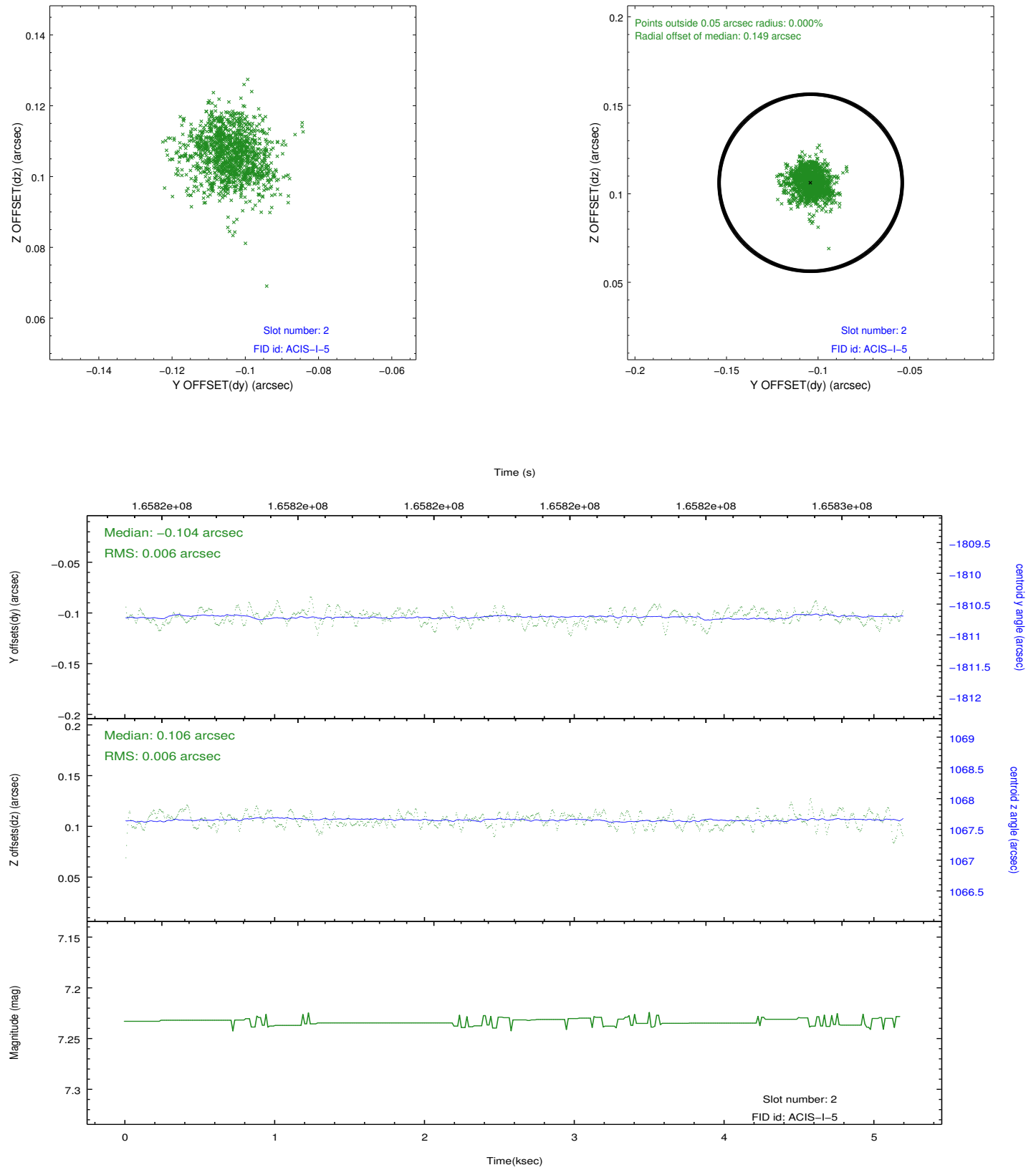
2.5.1 Slot 0



2.5.2 Slot 1



2.5.3 Slot 2



A Summary

A.1 Status

V&V Scientist	Beth Sundheim
V&V Date (YYYY-MM-DD)	2012.11.13
V&V Edition	1
V&V Disposition and Status	OK
V&V Charge Time	4.777

A.2 Comments