

V&V Reference Report

L2 ASCDS Version : 7.6.8

Observation 4232 - L2 Version 001
Chandra X-Ray Center

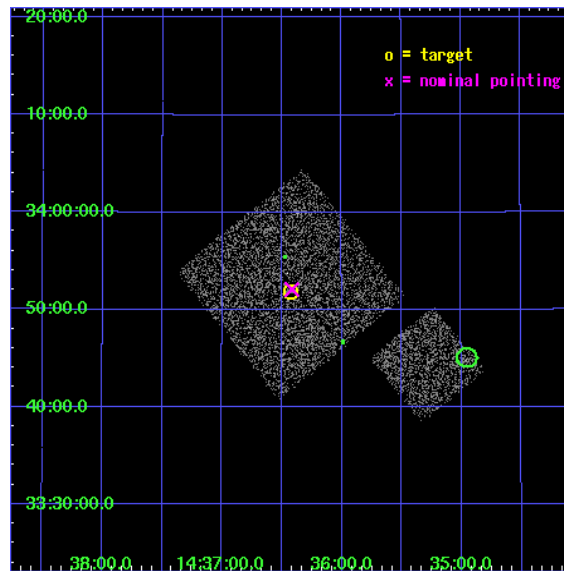
L2 Processing Date : Jul 30 2006

Contents

1	Front	2
2	OBI	3
2.1	OBI	3
2.1.1	Images	3
2.1.2	Bias	3
2.1.3	Parameters	4
2.1.4	Events	4
2.2	Compared Parameters	5
2.3	Aspect	6
2.4	Star Slots	9
2.4.1	Slot 3	9
2.4.2	Slot 4	10
2.4.3	Slot 5	11
2.4.4	Slot 6	12
2.4.5	Slot 7	13
2.5	FID Slots	14
2.5.1	Slot 0	14
2.5.2	Slot 1	15
2.5.3	Slot 2	16
3	Point Sources	17
A	Summary	18
A.1	Status	18
A.2	Comments	18

1 Front

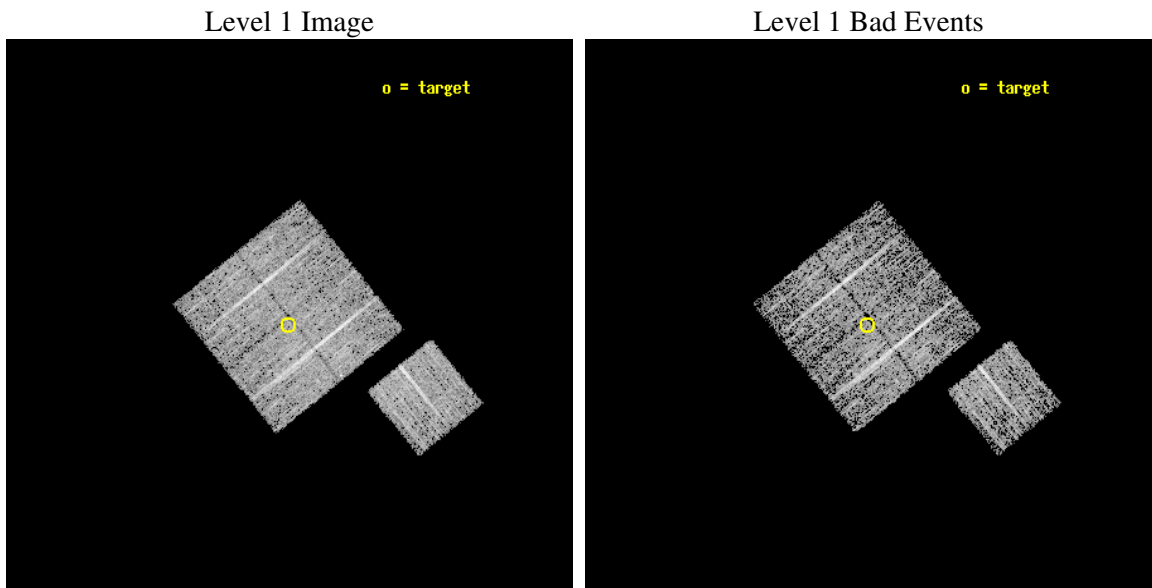
seq_num	900275
obs_id	4232
title	A CHANDRA WIDE-FIELD SURVEY TO MAP THE COSMIC WEB AND INVESTIGATE THE EVOLUTION OF NUCLEAR ACCRETION
observer	Dr. Christine Jones
object	SS3
dtcycle	0
cycle	P
ra_targ	219.106748
dec_targ	33.864306
ra_nom	219.1041326456
dec_nom	33.868325583009
roll_nom	141.01011958118
revision	3
ontime	4777.0999908149
livetime	4714.6836625851
ontime0	4773.9590205848
ontime1	4777.0999908149
ontime2	4777.0999908149
ontime3	4777.0999908149
ontime6	4777.0999908149
l2events	9683



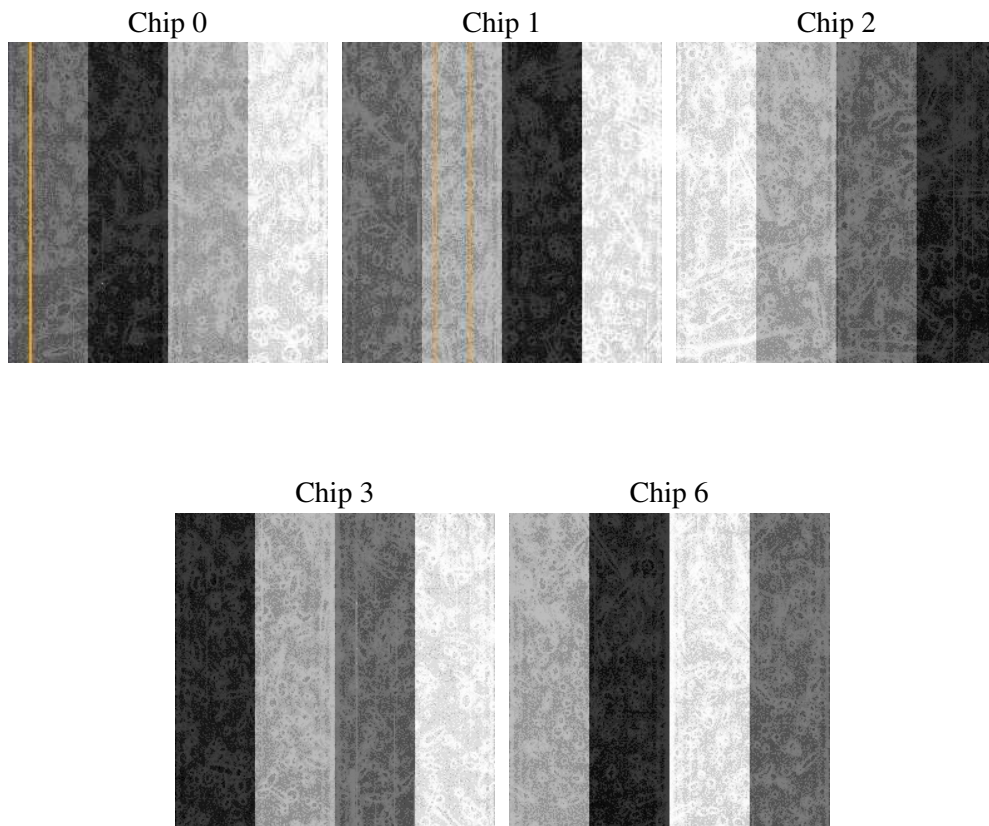
2 OBI

2.1 OBI

2.1.1 Images



2.1.2 Bias



2.1.3 Parameters

obi_num	1
ascdsver	7.6.8
caldsver	3.2.2
date	2006-07-30T05:20:52
revision	3

sched_exp_time	5000.000000
ontime	4780.6131416559
ontime0	4777.4721913636
ontime1	4780.6131416559
ontime2	4780.6131416559
ontime3	4780.6131416559
ontime6	4780.6131416559
l1events	120849

2.1.4 Events

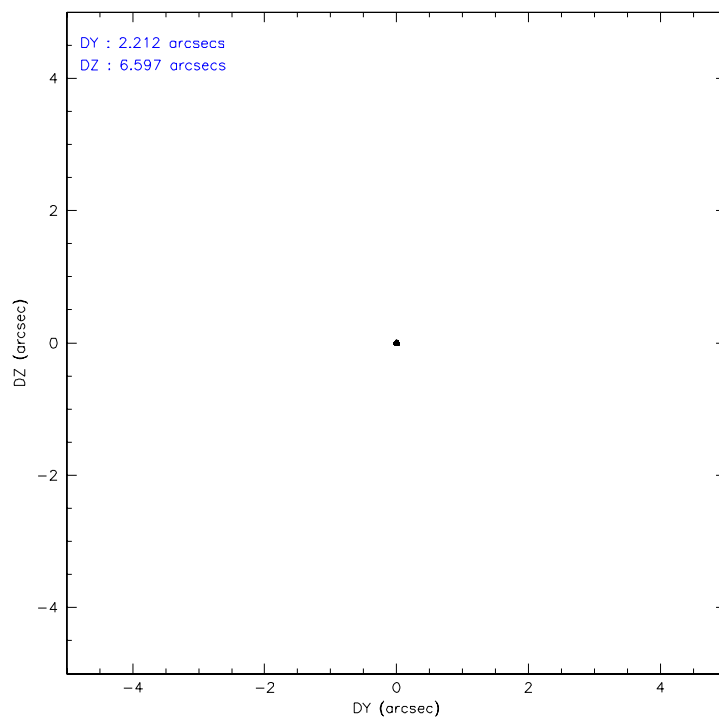
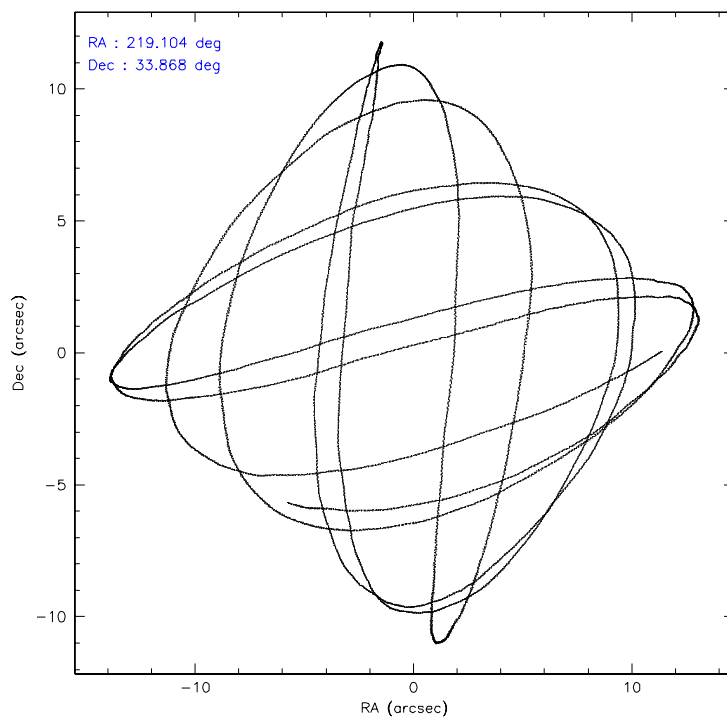
	ccd 0	ccd 1	ccd 2	ccd 3	ccd 6
level 1 events	22114	22672	25119	25060	25884
rejected events	19790	20233	22703	22807	23485
rejected %	89%	89%	90%	91%	90%

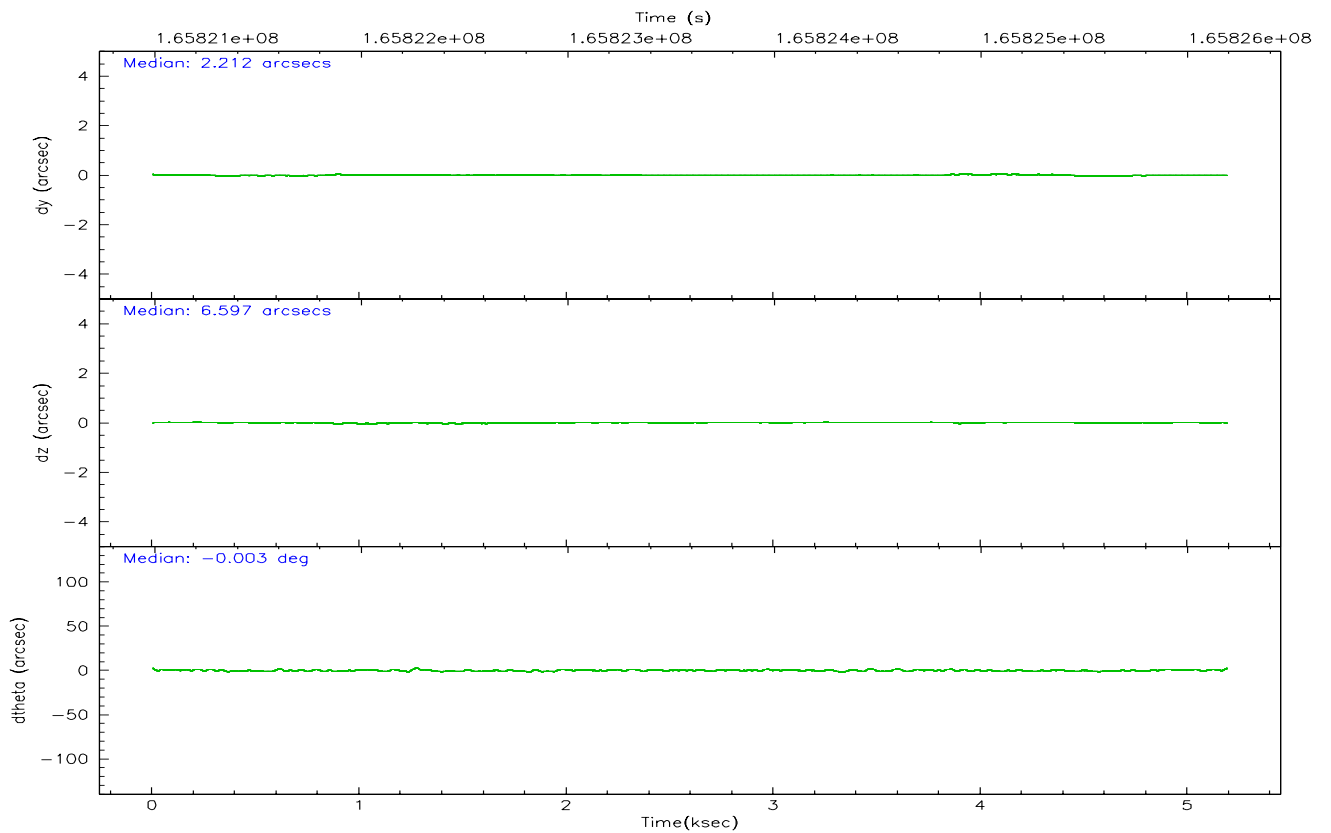
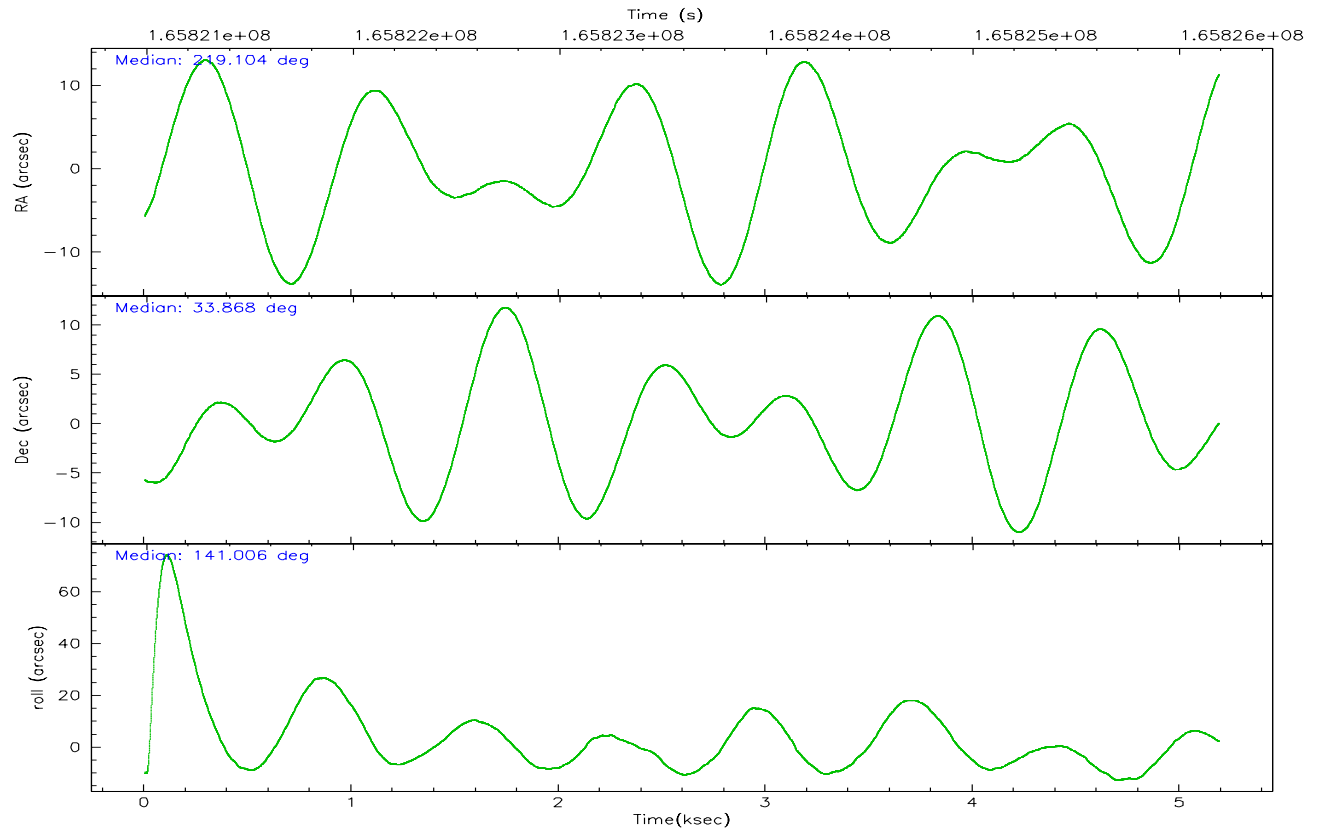
	ccd 0	ccd 1	ccd 2	ccd 3	ccd 6
grade 0 events	862	856	929	818	855
	3%	3%	3%	3%	3%
grade 1 events	8	13	14	10	6
	0%	0%	0%	0%	0%
grade 2 events	507	507	544	512	505
	2%	2%	2%	2%	1%
grade 3 events	276	278	259	277	287
	1%	1%	1%	1%	1%
grade 4 events	257	298	276	257	284
	1%	1%	1%	1%	1%
grade 5 events	666	781	645	781	763
	3%	3%	2%	3%	2%
grade 6 events	424	500	410	390	469
	1%	2%	1%	1%	1%
grade 7 events	19114	19439	22042	22015	22715
	86%	85%	87%	87%	87%

2.2 Compared Parameters

Parameter	Planned	Actual	Parameter	Planned	Actual
Instrument	ACIS	ACIS	Obspar format version number	6	6
Detector	ACIS-01236	ACIS-01236	Obspar file type	PREDICTED	ACTUAL
Grating	NONE	NONE	Obspar update status	NONE	UPDATED
Data mode	VFAINT	VFAINT	On-chip summing requested	N	N
Observation mode	POINTING	POINTING	Subarray requested	NONE	NONE
Pointing RA	219.136709	219.1041326456002	Alternating exposures requested	N	N
Pointing Dec	33.864225	33.8683255830092	Primary exposure time	0.000000	3.1
Pointing Roll	140.783308	141.0101195811763			
SIM focus pos (mm)	-0.782348	-0.7809083437167272			
SIM defocus (mm)	0	0.001439871863259334			
SIM translation stage pos (mm)	-233.592463	-233.5874344608287			
SIM translation stage offset (mm)	0	-0.005018542100998502			
Observation start time	165821185.184000	165820808.96809			
Observation start date	2003-04-04T05:25:21	2003-04-04T05:20:08			
Observation end time	165826185.184000	165826319.36832			
Observation end date	2003-04-04T06:48:41	2003-04-04T06:51:59			
Read mode	TIMED	TIMED			

2.3 Aspect



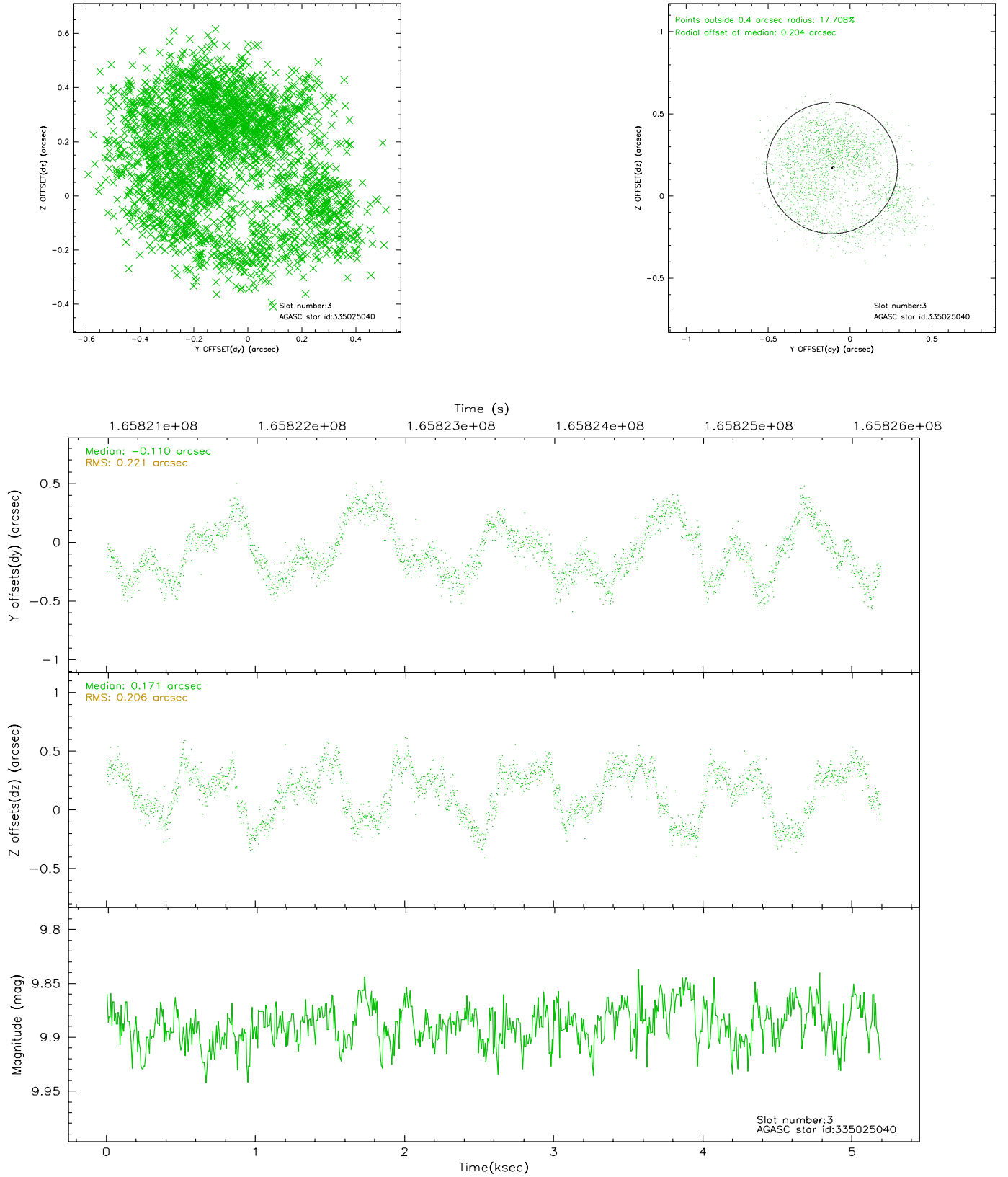


Slot Statistics

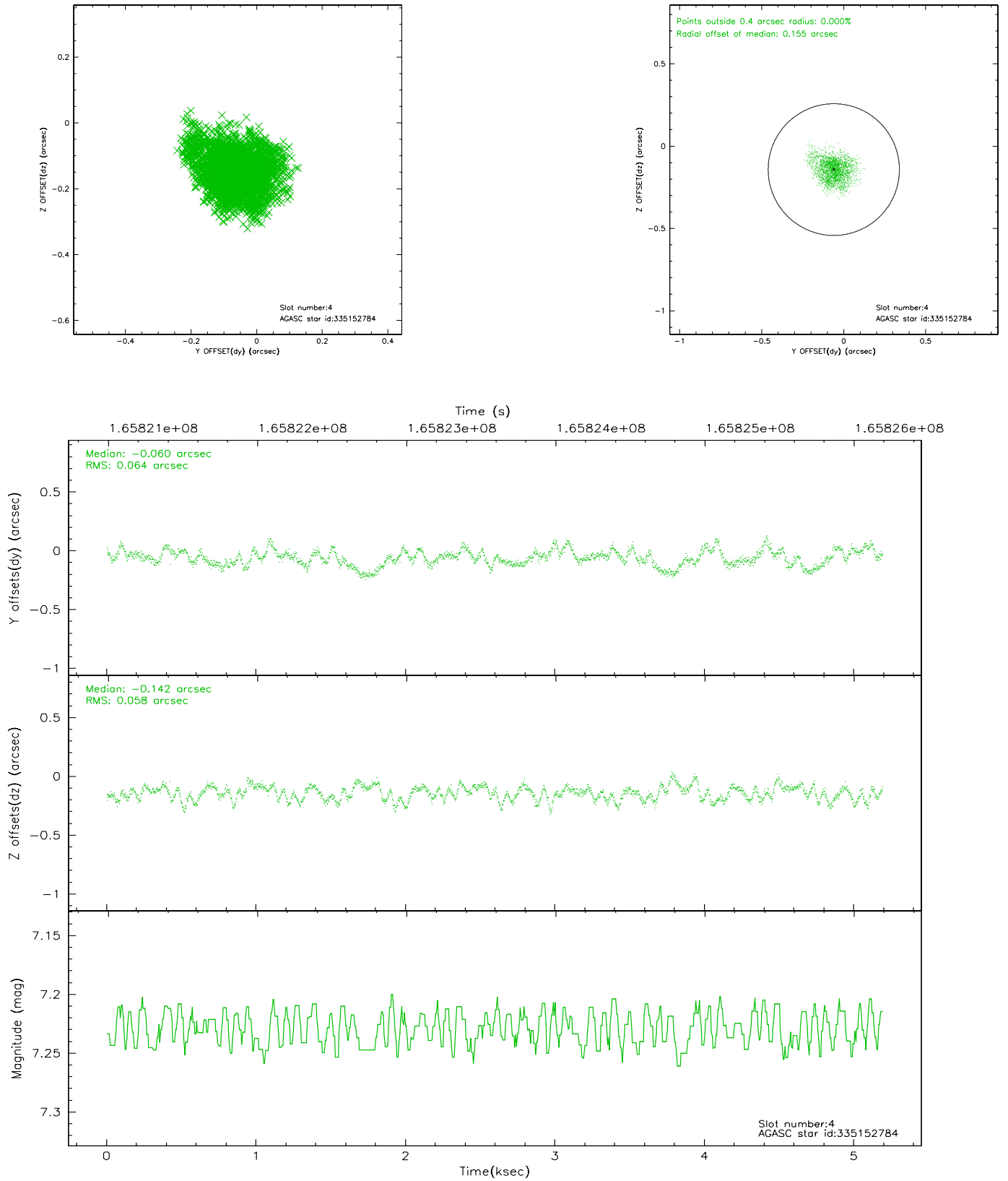
slot	status	id	mag	n_pts	med_dy	med_dz	dr1	dr2	ra	dec	mean_y	mean_z
0	FID	ACIS-I-2	7.15	1266	-0.036	-0.074	0.009	0.016	0.000000	0.000000	-756.60	-836.42
1	FID	ACIS-I-4	7.18	1265	0.009	0.048	0.006	0.010	0.000000	0.000000	2156.96	1069.31
2	FID	ACIS-I-5	7.23	1266	-0.073	0.095	0.009	0.014	0.000000	0.000000	-1808.98	1068.50
3	GUIDE	335025040	9.89	2530	-0.110	0.171	0.332	0.502	218.601670	34.305240	2239.59	-227.00
4	GUIDE	335152784	7.23	2532	-0.060	-0.142	0.093	0.149	219.280617	33.678221	-755.97	245.79
5	GUIDE	335154960	9.57	2529	0.196	0.051	0.120	0.185	219.209961	33.303073	-1448.21	1425.75
6	GUIDE	335155824	8.93	2532	-0.050	0.072	0.120	0.180	219.689900	34.035435	-886.15	-1523.76
7	GUIDE	335157088	9.09	2521	0.003	-0.125	0.095	0.149	219.274029	33.726909	-630.82	122.13

2.4 Star Slots

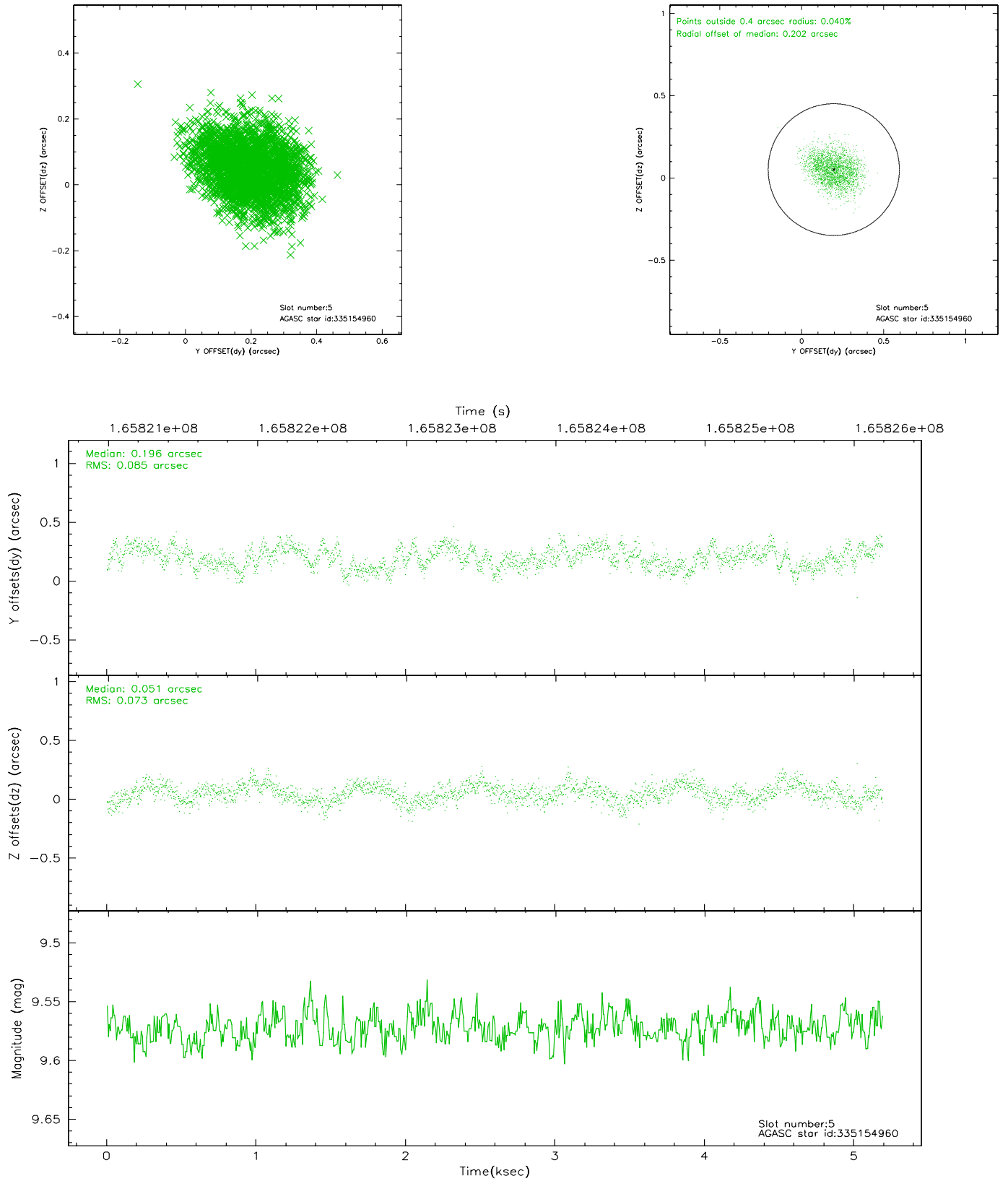
2.4.1 Slot 3



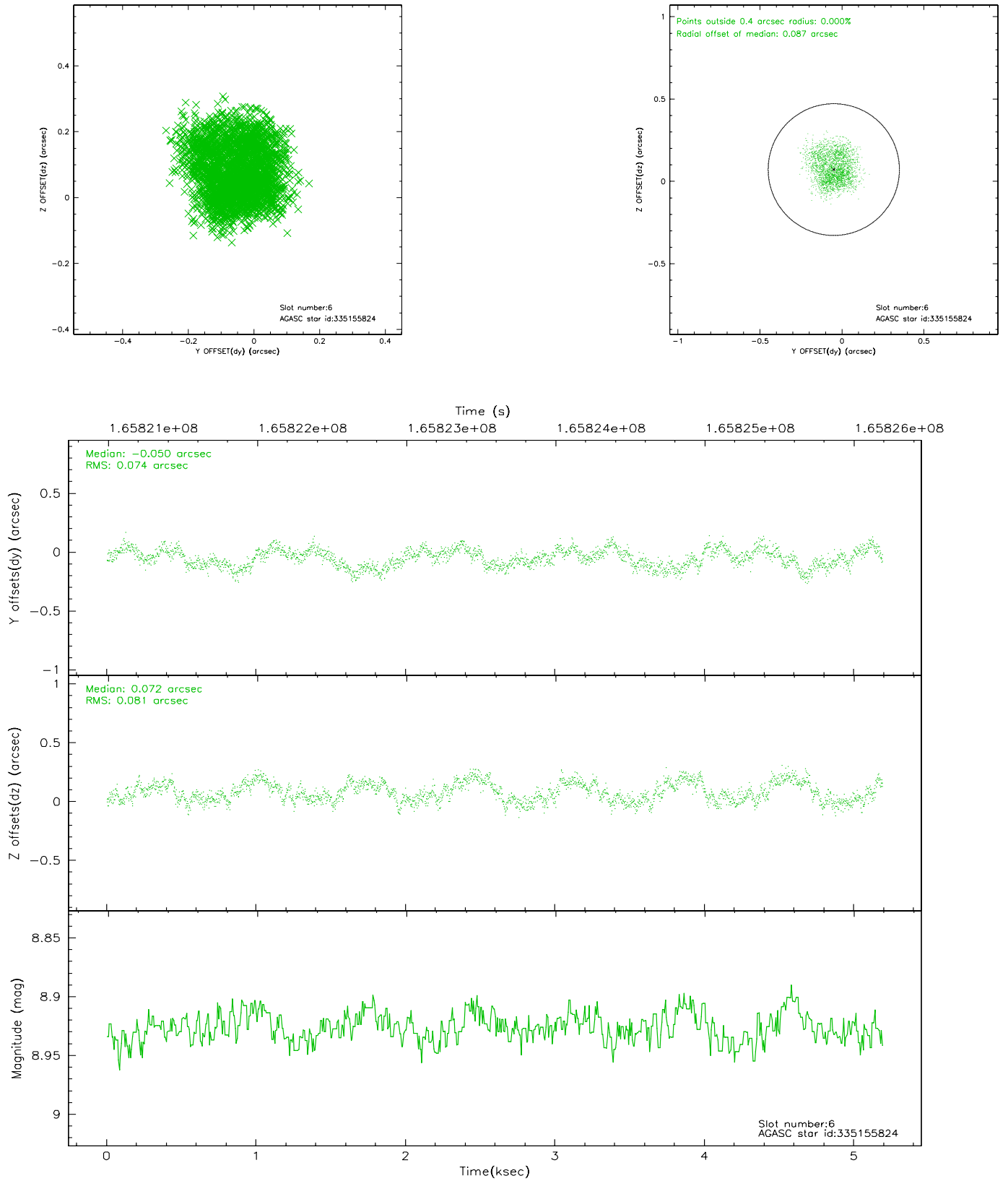
2.4.2 Slot 4



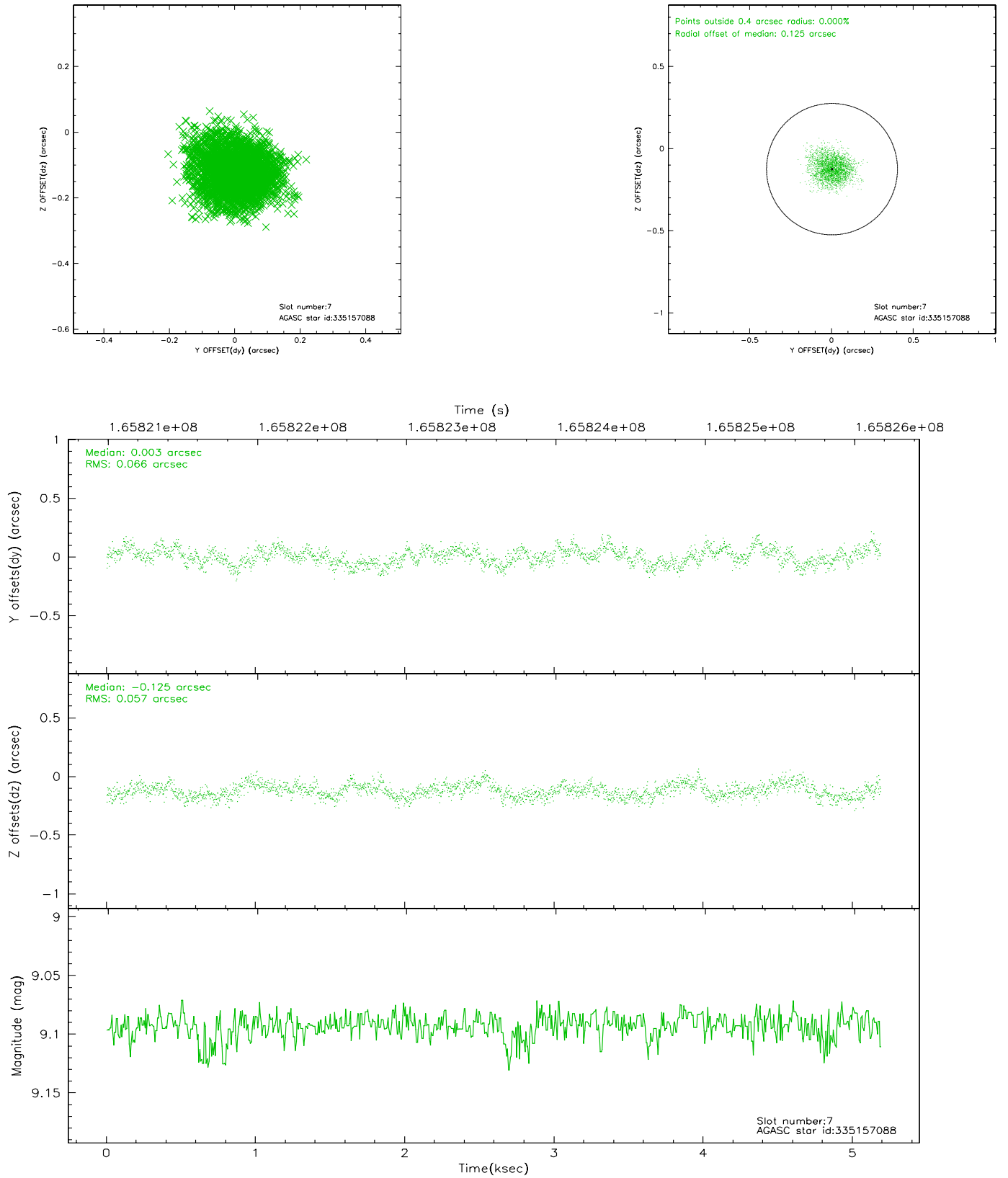
2.4.3 Slot 5



2.4.4 Slot 6

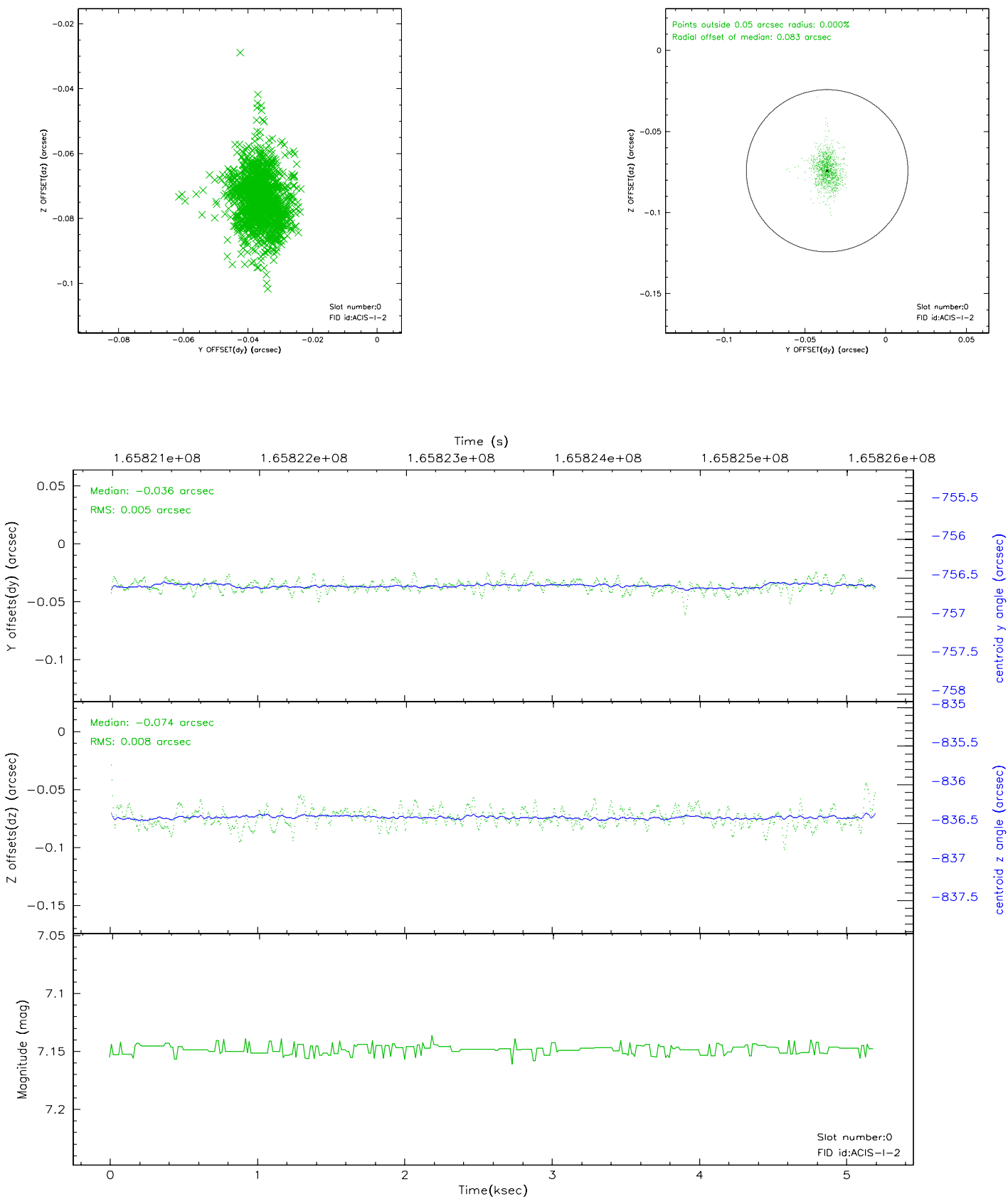


2.4.5 Slot 7

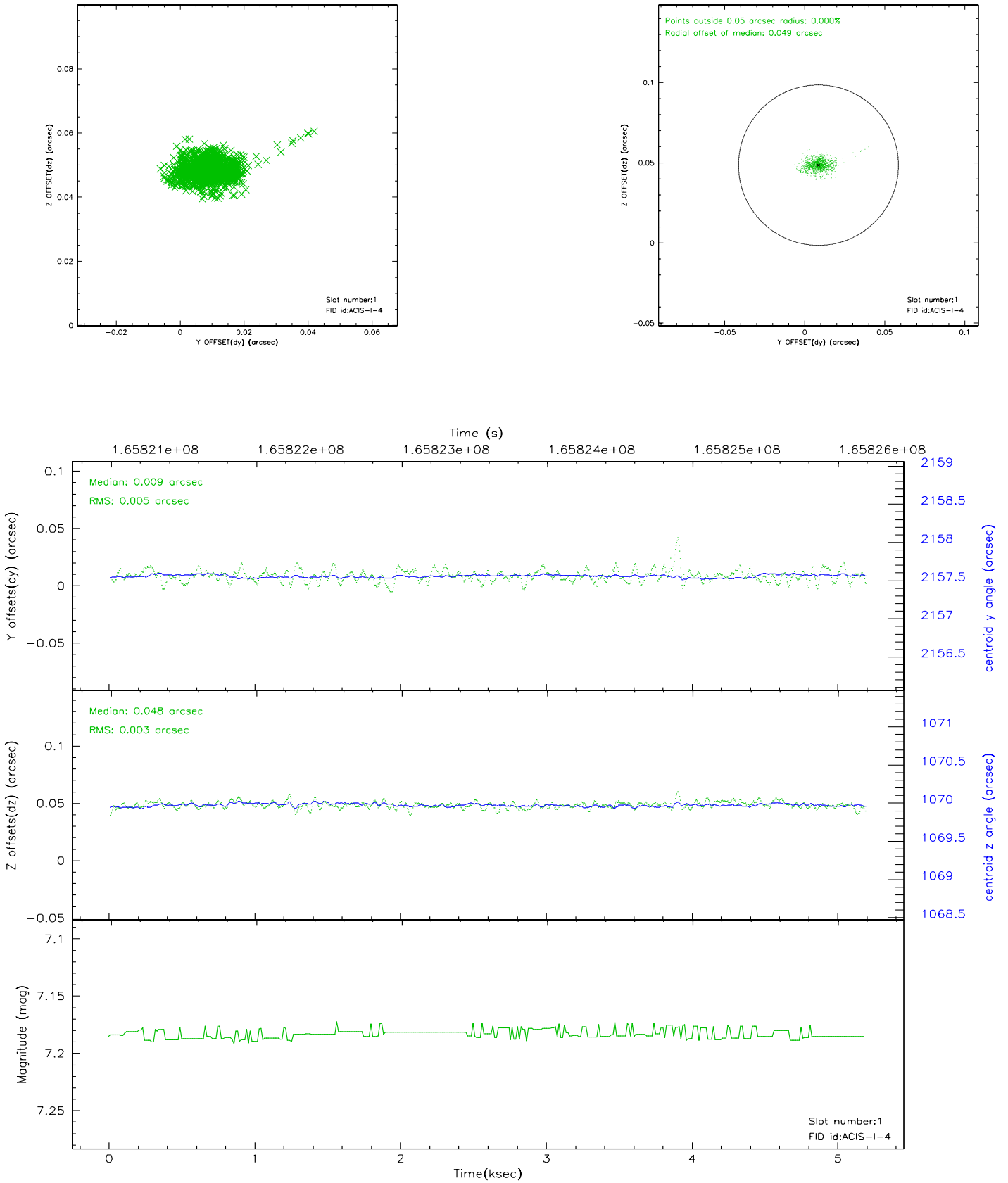


2.5 FID Slots

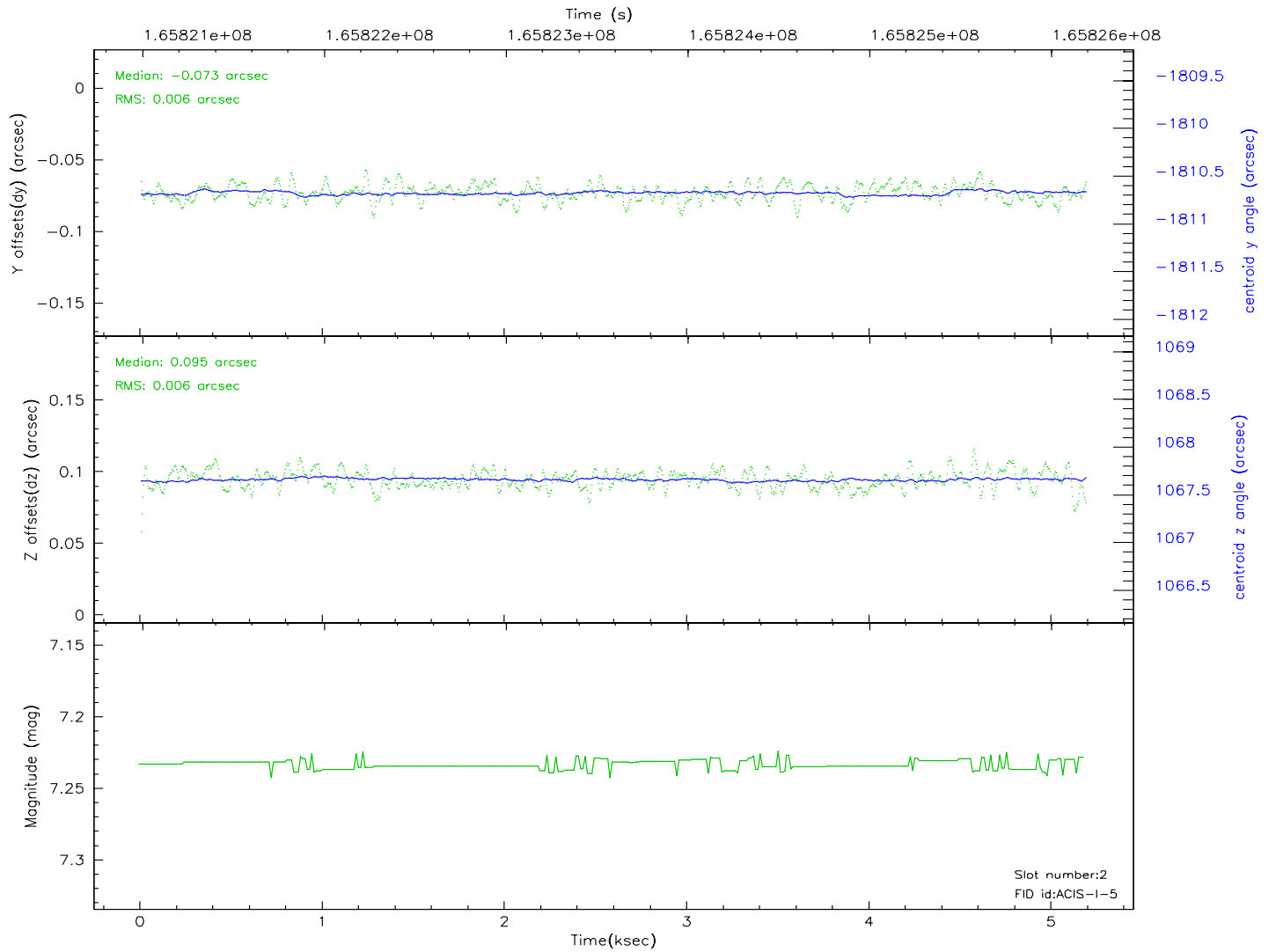
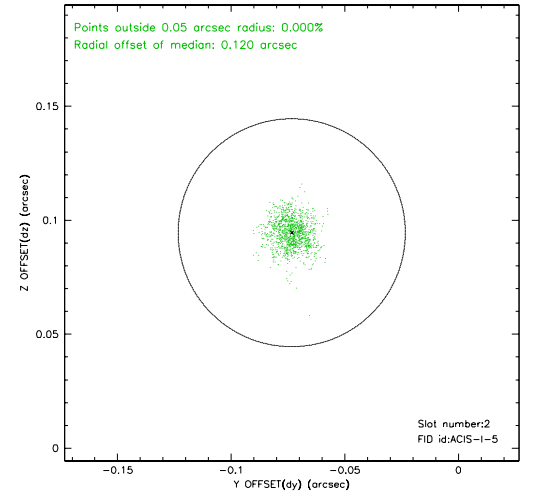
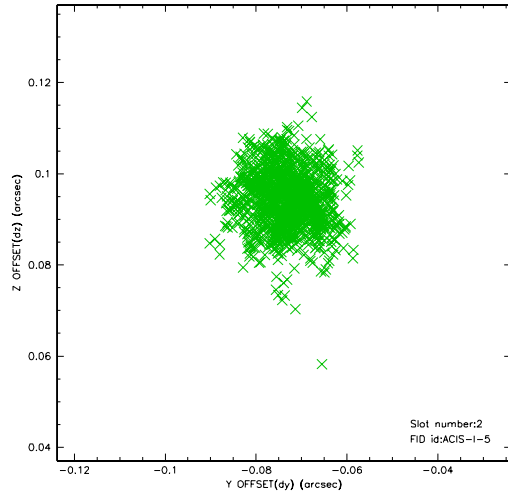
2.5.1 Slot 0



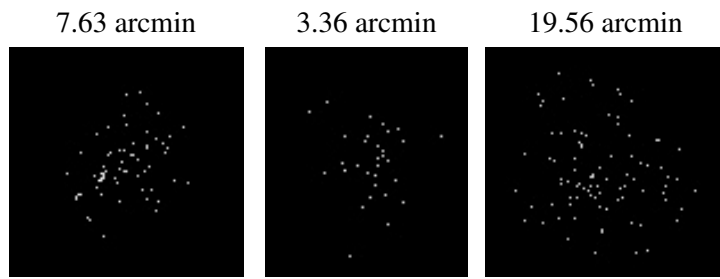
2.5.2 Slot 1



2.5.3 Slot 2



3 Point Sources



A Summary

A.1 Status

V&V Scientist	Jen Lauer
V&V Date (YYYY-MM-DD)	2006.07.30
V&V Edition	1
V&V Disposition and Status	OK
V&V Charge Time	4.777

A.2 Comments