

V&V Reference Report

L2 ASCDS Version : 8.4.5

Observation 422 - L2 Version 3
Chandra X-Ray Center

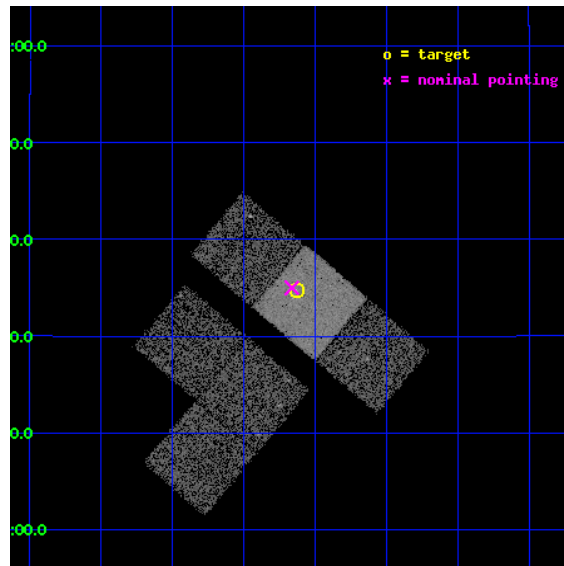
L2 Processing Date : Sep 3 2012

Contents

1	Front	2
2	OBI	3
2.1	OBI	3
2.1.1	Images	3
2.1.2	Bias	3
2.1.3	Parameters	4
2.1.4	Events	4
2.2	Compared Parameters	5
2.3	Aspect	6
2.4	Star Slots	9
2.4.1	Slot 3	9
2.4.2	Slot 4	10
2.4.3	Slot 5	11
2.4.4	Slot 6	12
2.4.5	Slot 7	13
2.5	FID Slots	14
2.5.1	Slot 0	14
2.5.2	Slot 1	15
2.5.3	Slot 2	16
A	Summary	17
A.1	Status	17
A.2	Comments	17

1 Front

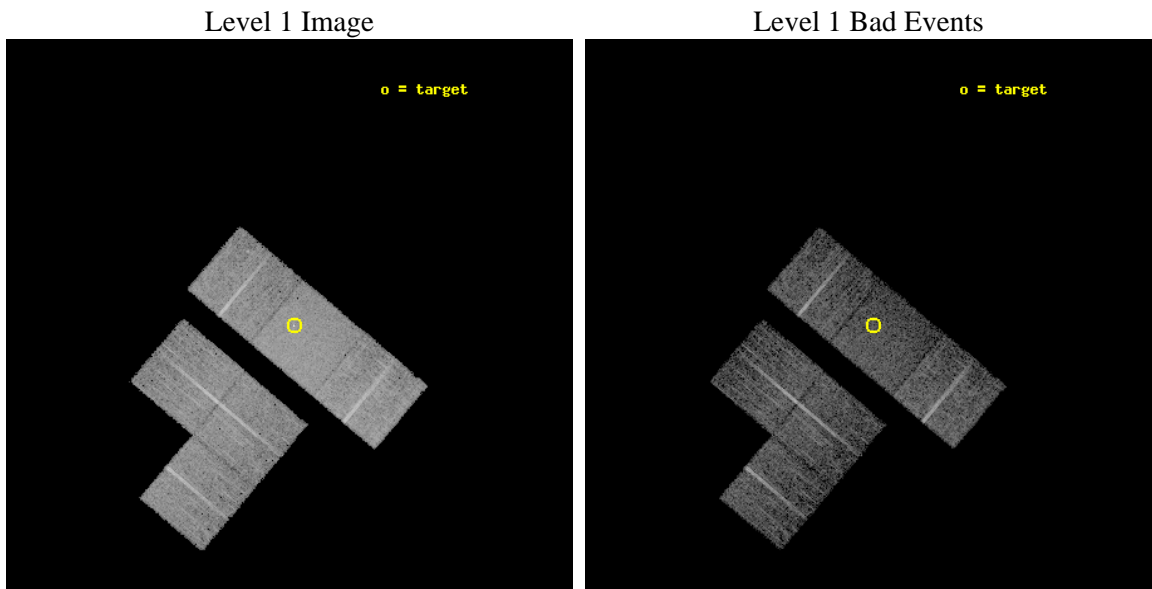
seq_num	700094	Sequence number
obs_id	422	Observation id
title	A SURVEY OF GRAVITATIONALLY LENSED QUASARS	Proposal title
observer	Professor Gordon Garmire	Principal investigator
object	MITG J0414+0534	Source name
dtcycle	0	
cycle	P	events from which exps? Prim/Second/Both
ra_targ	63.657083	Observer's specified target RA [deg]
dec_targ	5.578333	Observer's specified target Dec [deg]
ra_nom	63.665620925489	Nominal RA [deg]
dec_nom	5.5831745503819	Nominal Dec [deg]
roll_nom	40.134535911862	Nominal Roll [deg]
revision	3	Processing version of data
ontime	7596.8000070602	Sum of GTIs [s]
livetime	7500.604751127	Livetime [s]
ontime1	7596.8000070602	Sum of GTIs [s]
ontime2	7596.8000070602	Sum of GTIs [s]
ontime3	7596.8000070602	Sum of GTIs [s]
ontime6	7596.8000070602	Sum of GTIs [s]
ontime7	7596.8000070602	Sum of GTIs [s]
ontime8	7596.8000070602	Sum of GTIs [s]
l2events	47432	Number of level 2 events



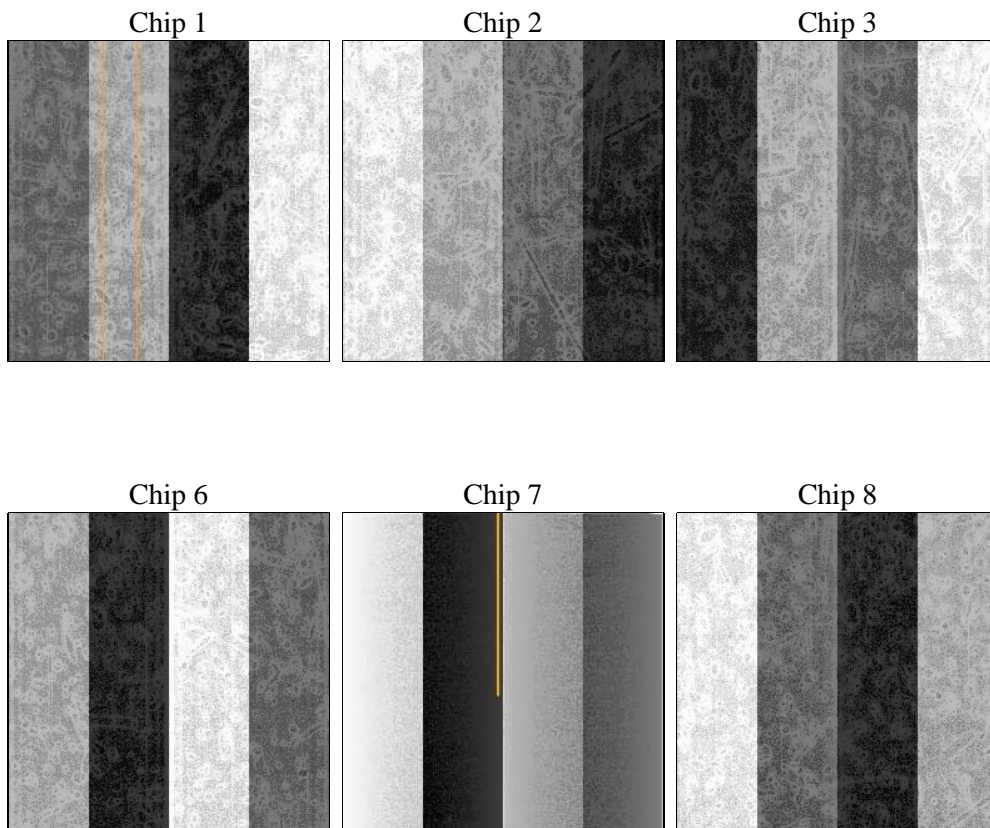
2 OBI

2.1 OBI

2.1.1 Images



2.1.2 Bias



2.1.3 Parameters

obi_num	0	Obi number	sched_exp_time	7500.000000	[s] Scheduled observation exposure time
ascdsver	8.4.5	Processing system revision	ontime	7596.8000070602	Sum of GTIs [s]
caldsver	4.5.1.1	 	ontime1	7596.8000070602	Sum of GTIs [s]
date	2012-09-03T16:06:47	Date and time of file creation	ontime2	7596.8000070602	Sum of GTIs [s]
revision	3	Processing version of data	ontime3	7596.8000070602	Sum of GTIs [s]
			ontime6	7596.8000070602	Sum of GTIs [s]
			ontime7	7596.8000070602	Sum of GTIs [s]
			ontime8	7596.8000070602	Sum of GTIs [s]
			l1events	289337	Number of level 1 events

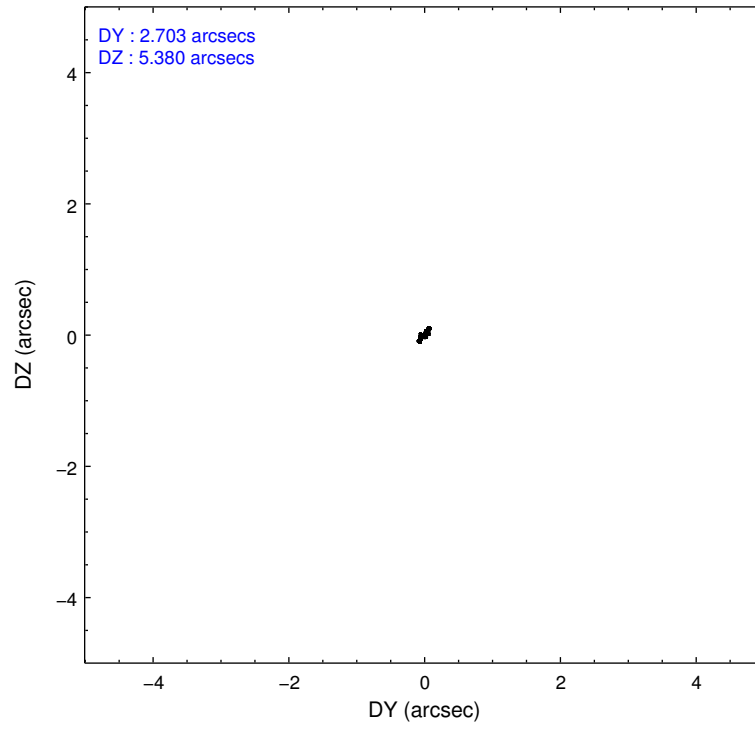
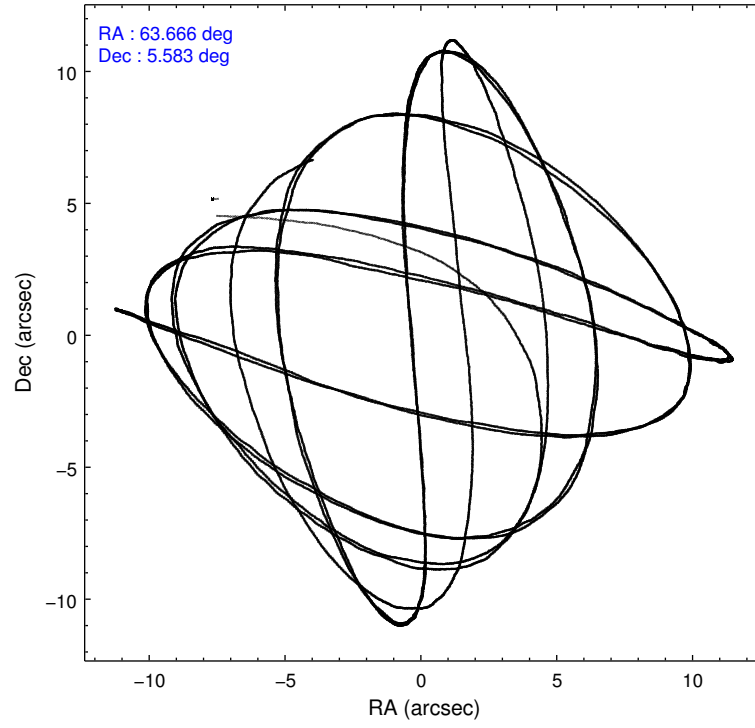
2.1.4 Events

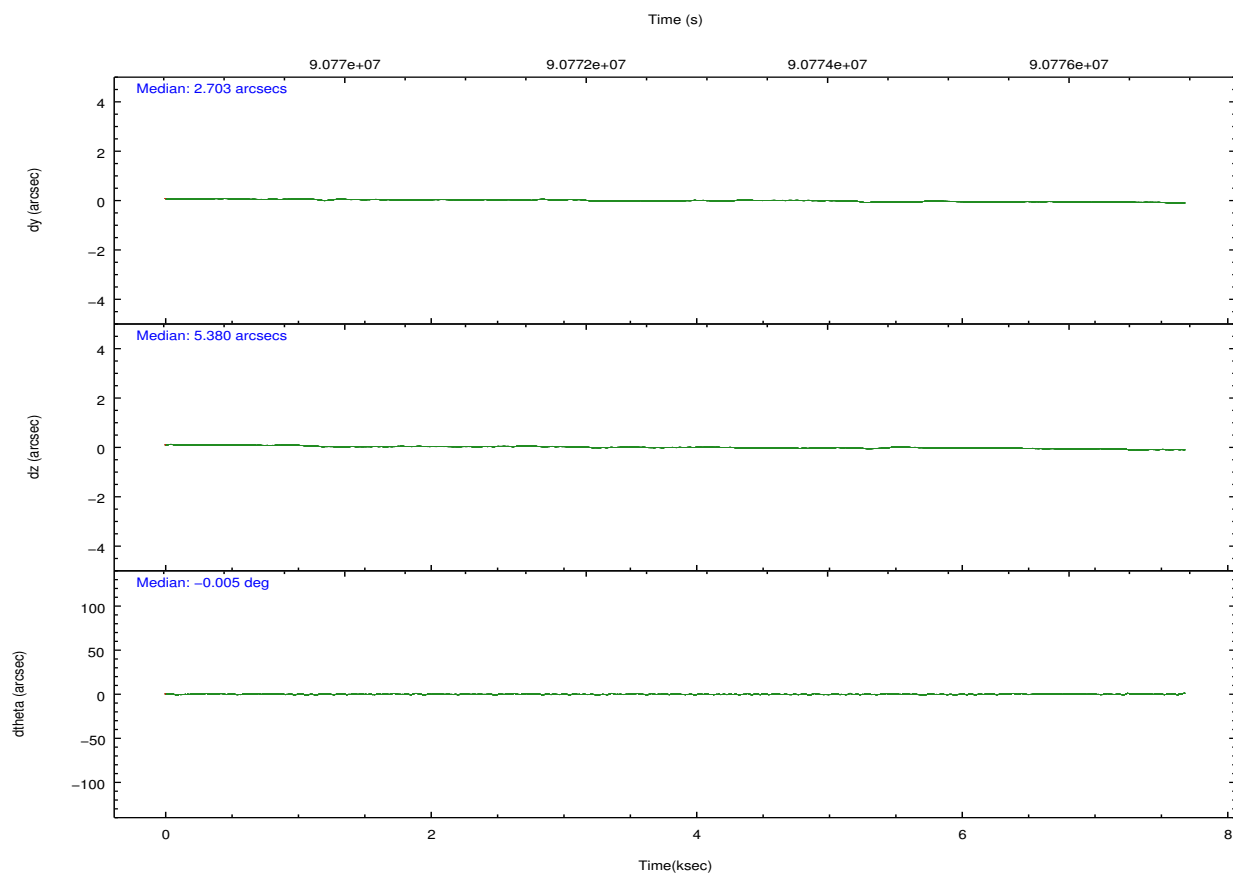
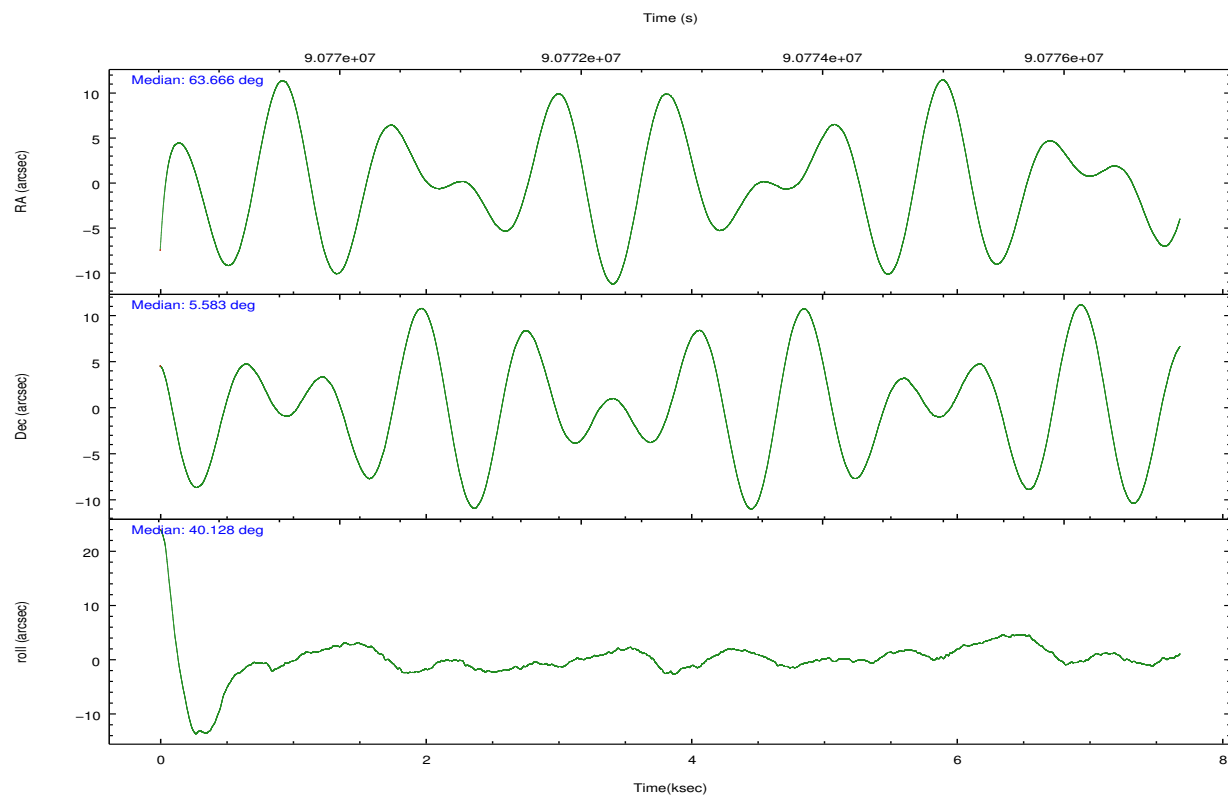
	ccd 1	ccd 2	ccd 3	ccd 6	ccd 7	ccd 8		ccd 1	ccd 2	ccd 3	ccd 6	ccd 7	ccd 8
level 1 events	42932	44660	42811	44816	56875	57243	grade 0 events	2338	2180	2431	2330	2348	3738
rejected events	37144	39560	37416	39348	32608	45576		5%	4%	5%	5%	4%	6%
rejected %	86%	88%	87%	87%	57%	79%	grade 1 events	25	19	16	18	64	23
								0%	0%	0%	0%	0%	0%
							grade 2 events	1172	1069	1045	1115	4786	2423
								2%	2%	2%	2%	8%	4%
							grade 3 events	613	476	501	511	2290	1297
								1%	1%	1%	1%	4%	2%
							grade 4 events	593	491	495	486	2149	1167
								1%	1%	1%	1%	3%	2%
							grade 5 events	1679	1417	1680	1878	5292	2340
								3%	3%	3%	4%	9%	4%
							grade 6 events	1078	888	927	1034	12717	3050
								2%	1%	2%	2%	22%	5%
							grade 7 events	35434	38120	35716	37444	27229	43205
								82%	85%	83%	83%	47%	75%

2.2 Compared Parameters

Parameter	Planned	Actual	Parameter	Planned	Actual
Instrument	ACIS	ACIS	Obspar format version number	7	7
Detector	ACIS-123678	ACIS-123678	Obspar file type	PREDICTED	ACTUAL
Grating	NONE	NONE	Obspar update status	NONE	UPDATED
Data mode	FAINT	FAINT	Number of optional ACIS chips dropped	0	0
Observation mode	POINTING	POINTING	On-chip summing requested	N	N
[deg] Pointing RA	63.656549	63.66562092548915	Subarray requested	NONE	NONE
[deg] Pointing Dec	5.557443	5.583174550381893	Alternating exposures requested	N	N
[deg] Pointing Roll	39.978739	40.13453591186195	[s] Primary exposure time	0.000000	3.2
[mm] SIM focus pos	-0.684267	-0.6828225247311905			
[mm] SIM defocus	0	0.001444936568705701			
[mm] SIM translation stage pos	-190.132523	-190.1425803651734			
[mm] SIM translation stage offset	0	0.01005778216563158			
[s] Observation start time (MET)	90769072.184000	90768039.16369			
Observation start date	2000-11-16T13:36:48	2000-11-16T13:20:39			
[s] Observation end time (MET)	90776572.184000	90777368.714046			
Observation end date	2000-11-16T15:41:48	2000-11-16T15:56:08			
Read mode	TIMED	TIMED			

2.3 Aspect



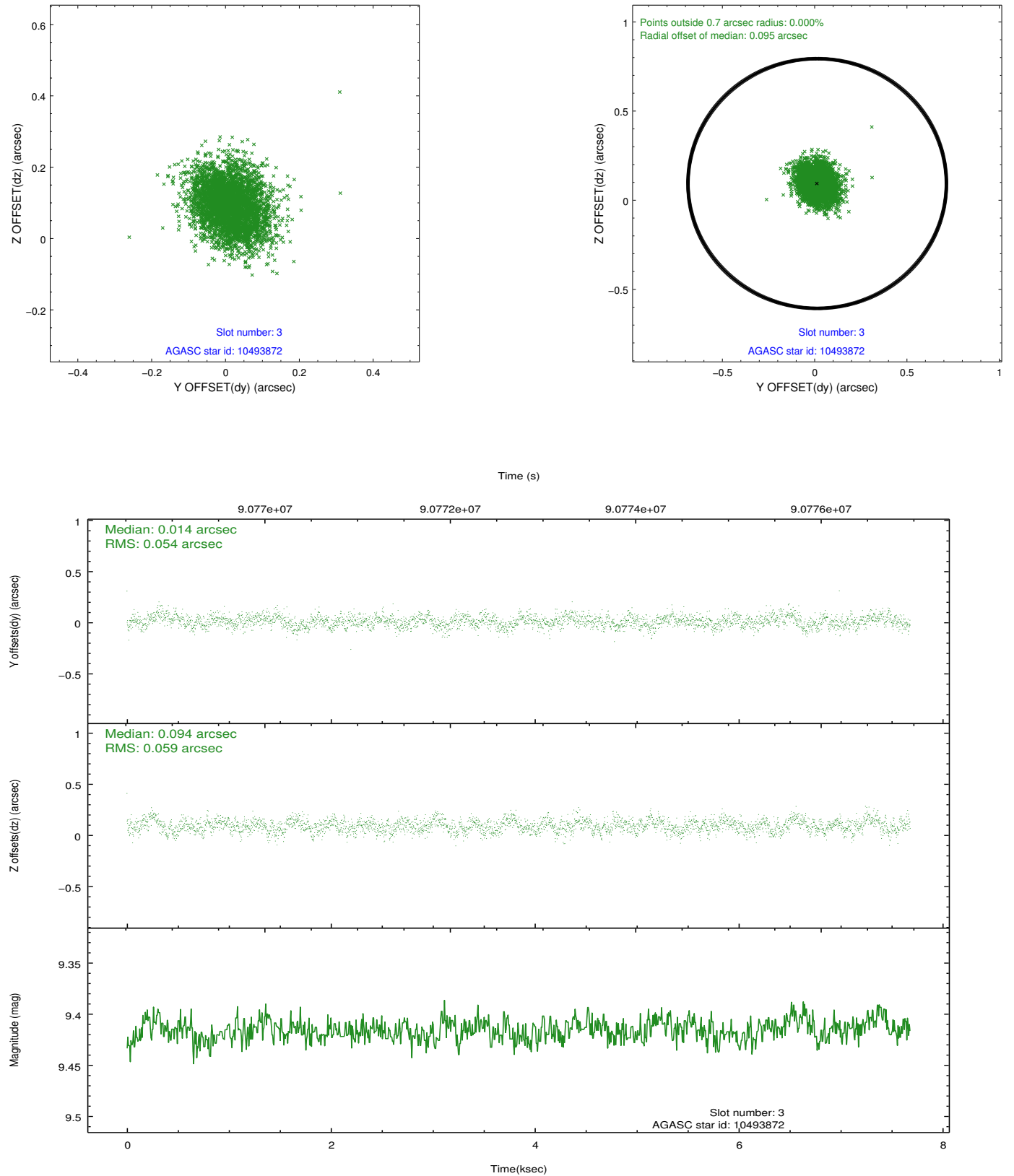


Slot Statistics

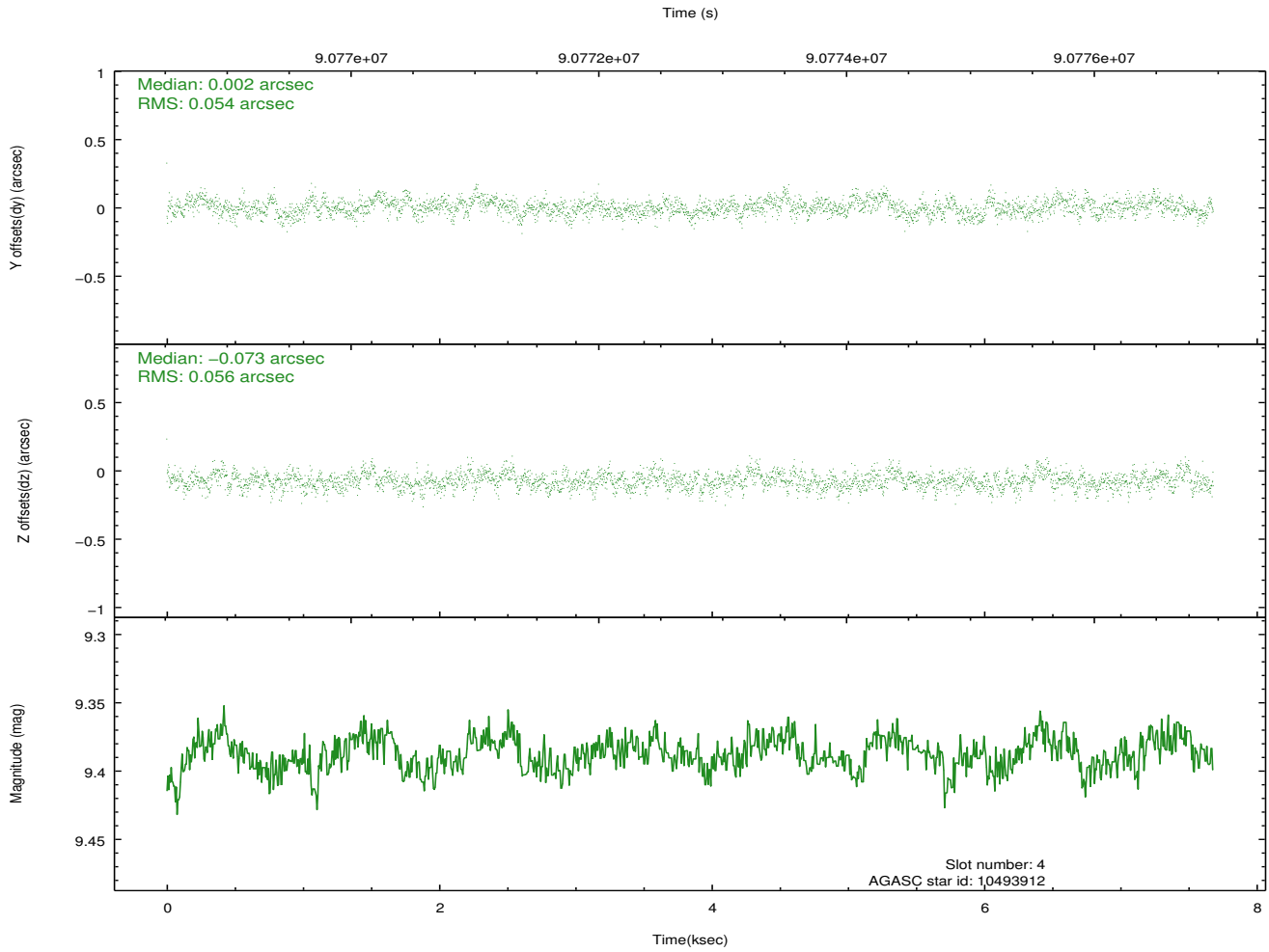
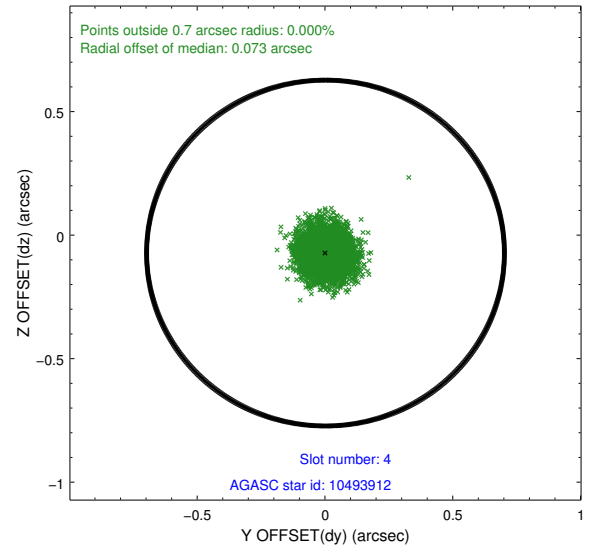
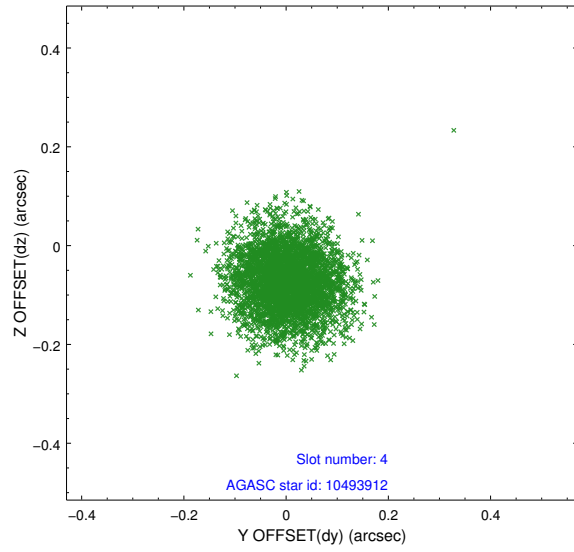
slot	status	id	mag	n_pts	med_dy	med_dz	dr1	dr2	ra	dec	mean_y	mean_z
0	FID	ACIS-S-2	7.11	1873	-0.029	0.010	0.007	0.011	0.000000	0.000000	-755.34	-1726.46
1	FID	ACIS-S-4	7.21	1873	-0.020	0.012	0.005	0.010	0.000000	0.000000	2157.59	181.31
2	FID	ACIS-S-5	7.24	1874	0.018	-0.013	0.006	0.011	0.000000	0.000000	-1807.21	175.74
3	GUIDE	10493872	9.42	3744	0.014	0.094	0.084	0.139	63.703184	5.387990	-263.45	-573.68
4	GUIDE	10493912	9.39	3748	0.002	-0.073	0.083	0.136	63.610162	5.180568	-998.71	-932.08
5	GUIDE	10495504	9.64	3748	0.012	-0.054	0.088	0.144	63.747259	5.177624	-629.05	-1256.07
6	GUIDE	10098752	8.89	3747	-0.038	-0.048	0.083	0.129	63.736939	4.861472	-1388.47	-2104.66
7	GUIDE	10098632	9.31	3745	0.011	0.077	0.106	0.164	63.789336	4.774923	-1444.80	-2464.34

2.4 Star Slots

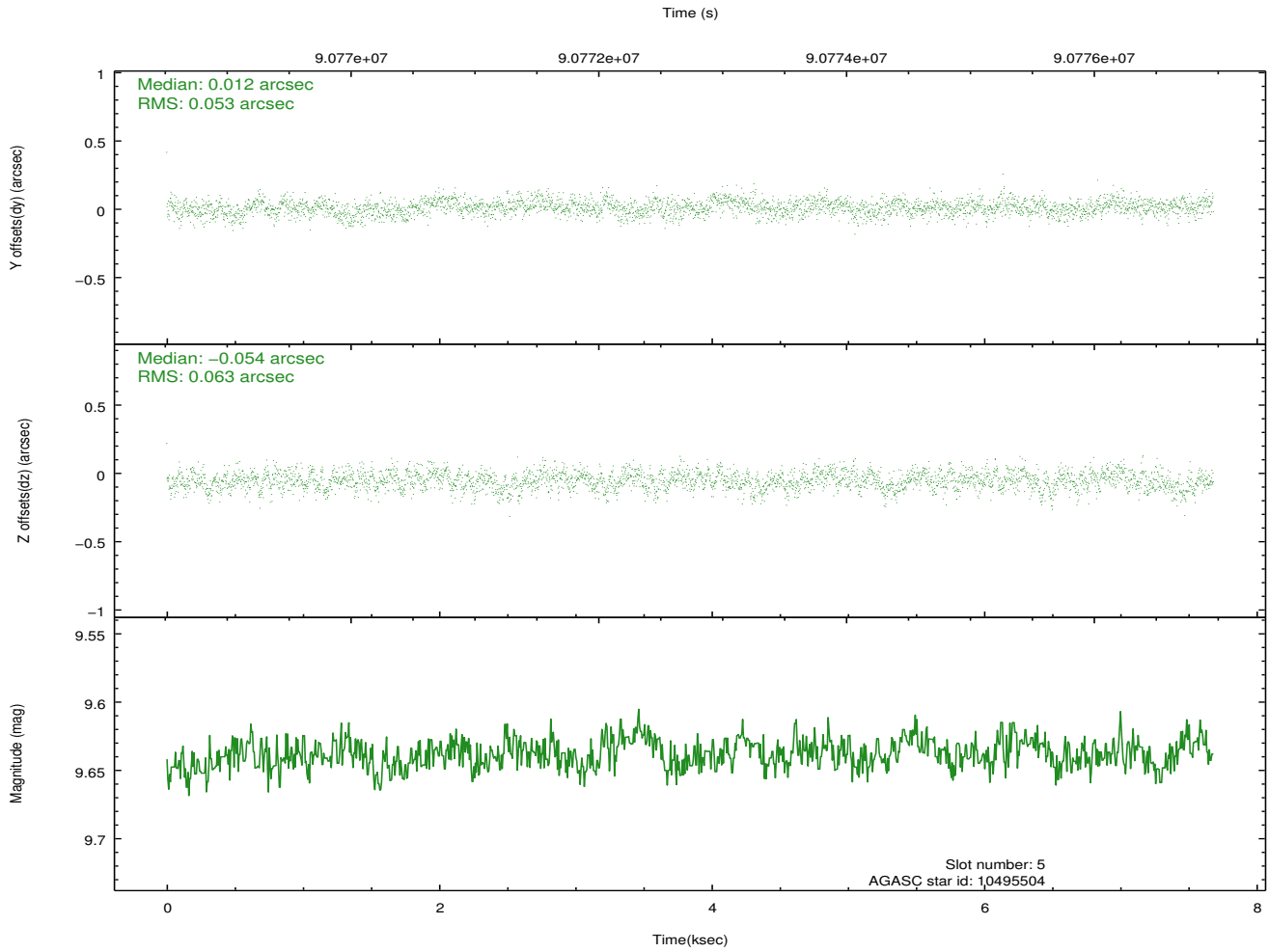
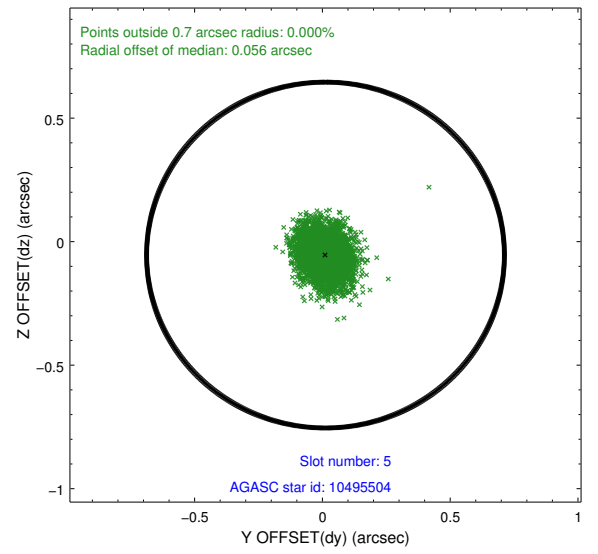
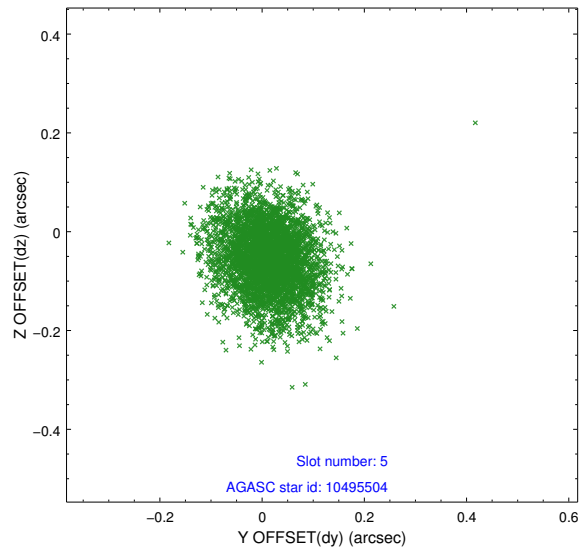
2.4.1 Slot 3



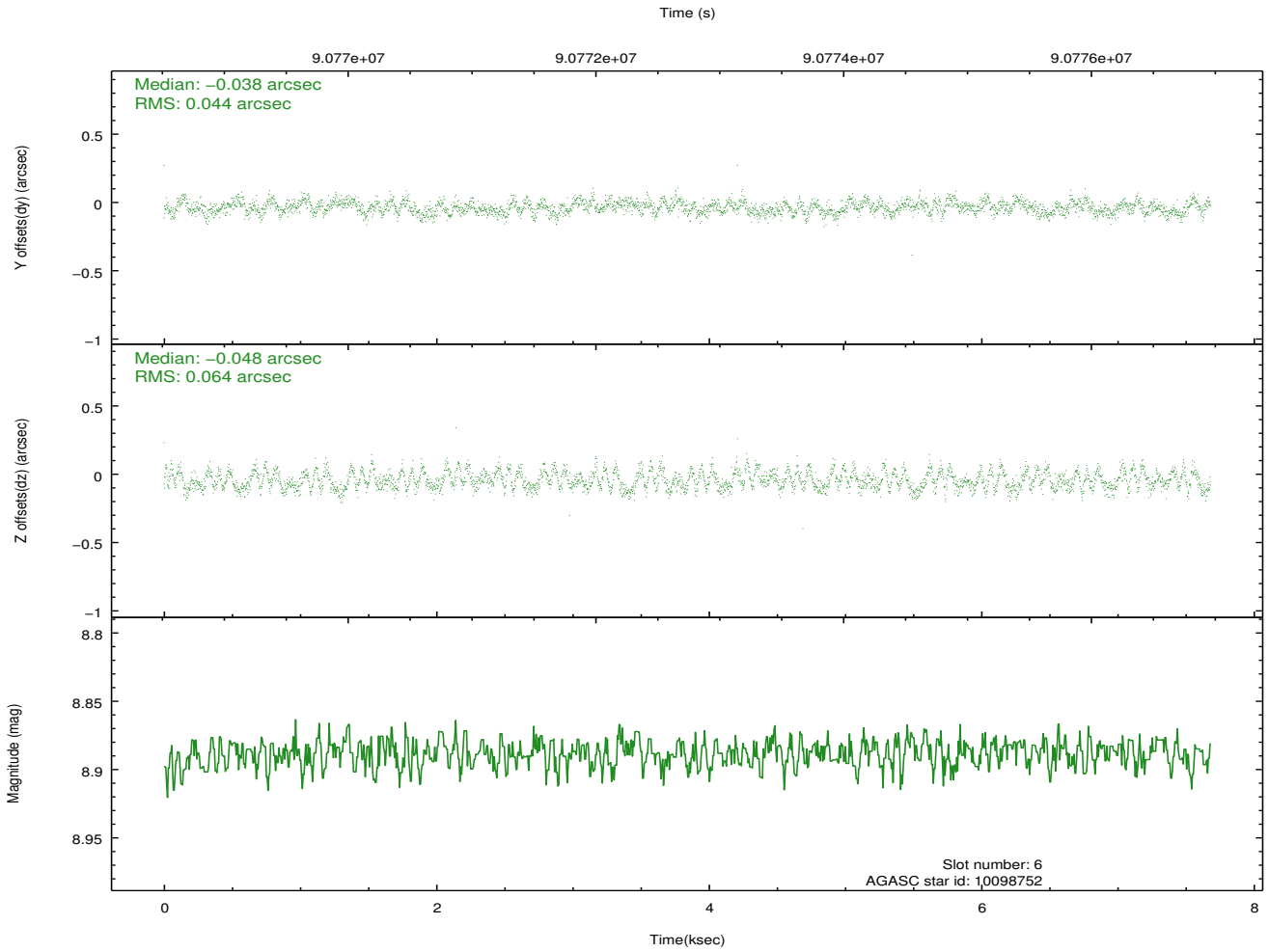
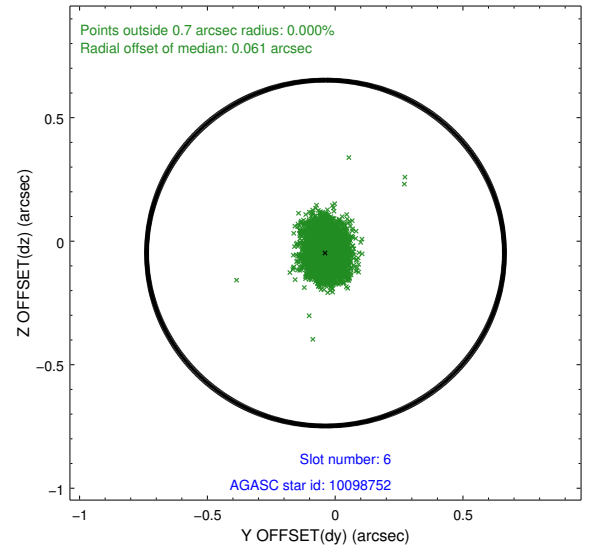
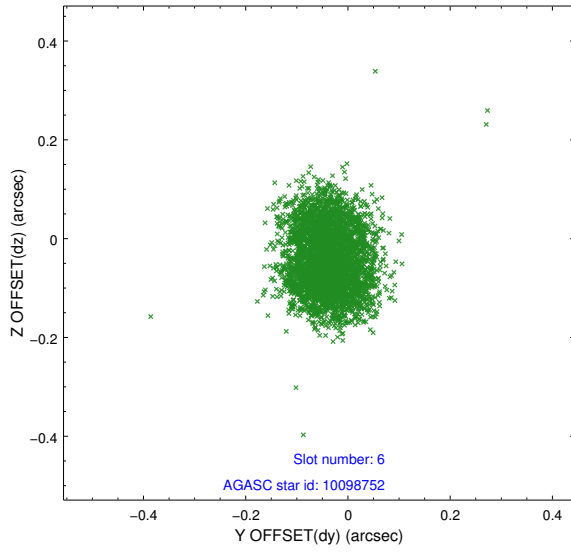
2.4.2 Slot 4



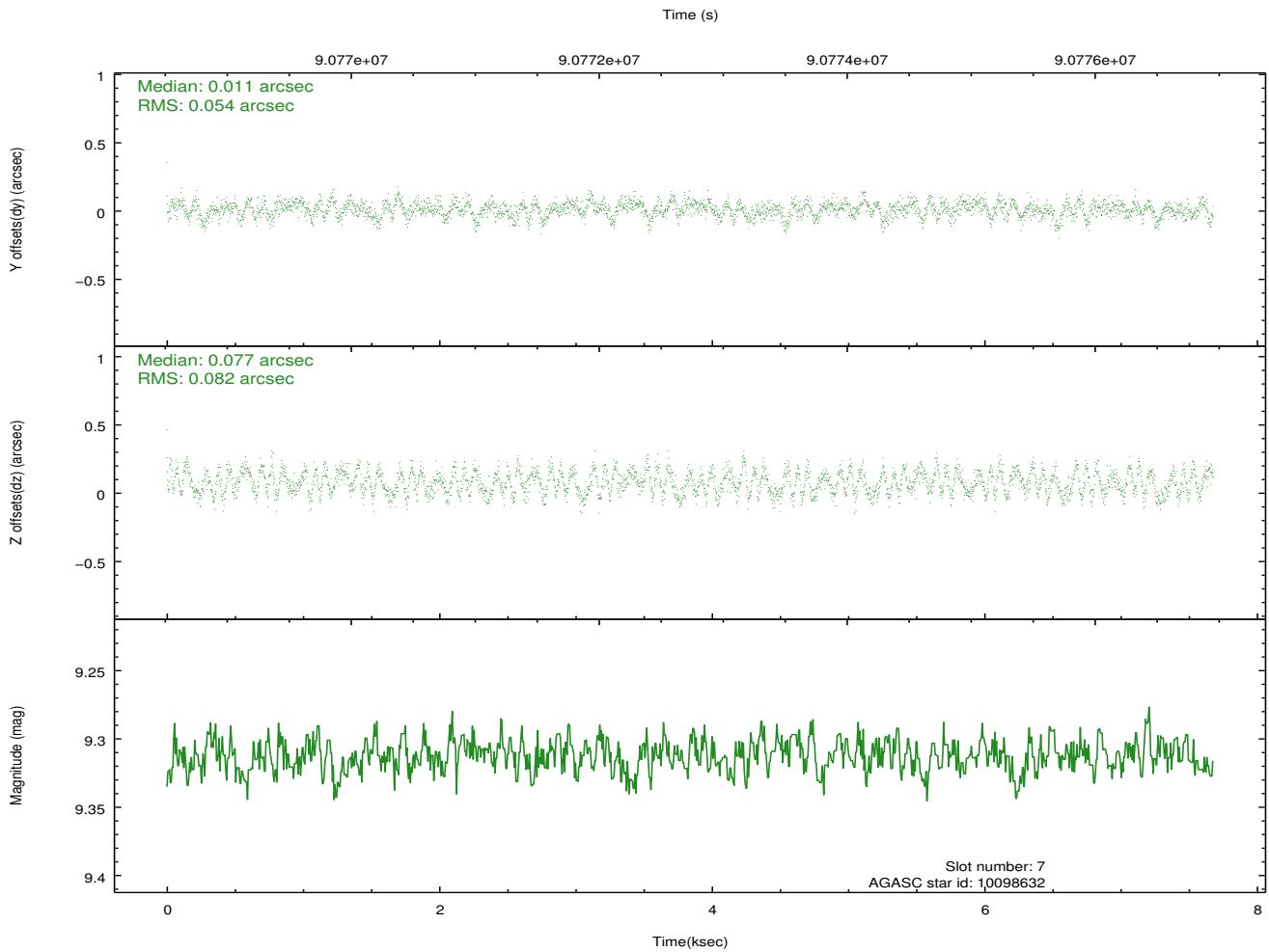
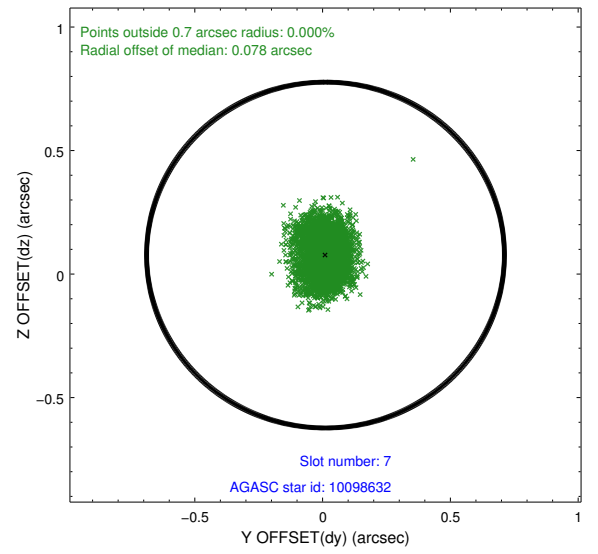
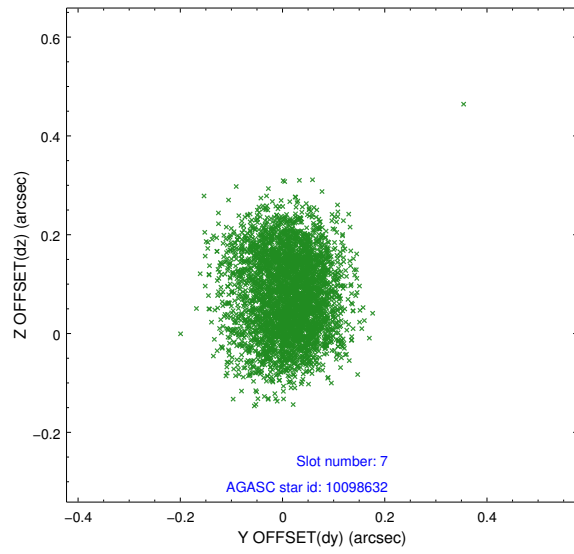
2.4.3 Slot 5



2.4.4 Slot 6

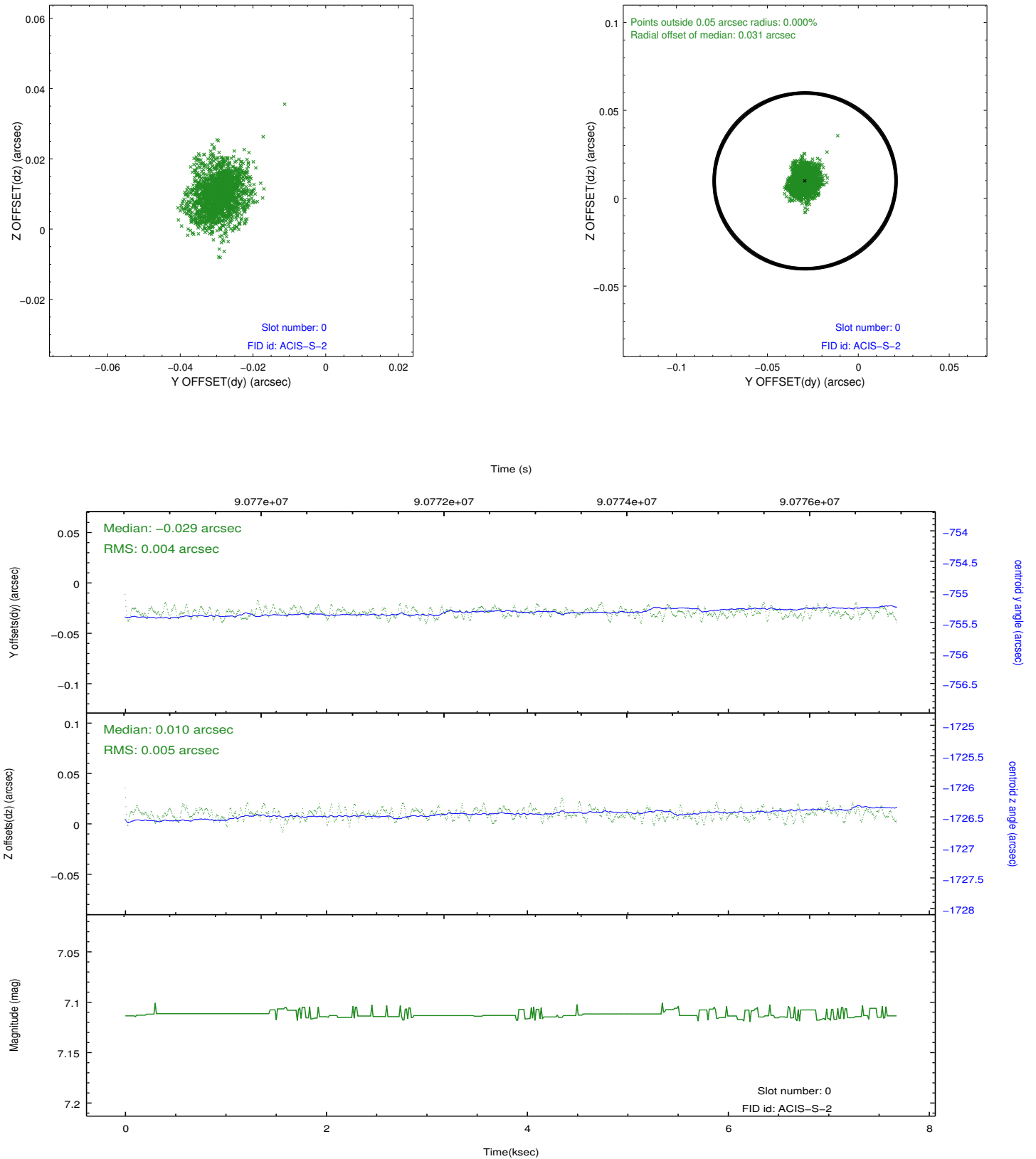


2.4.5 Slot 7

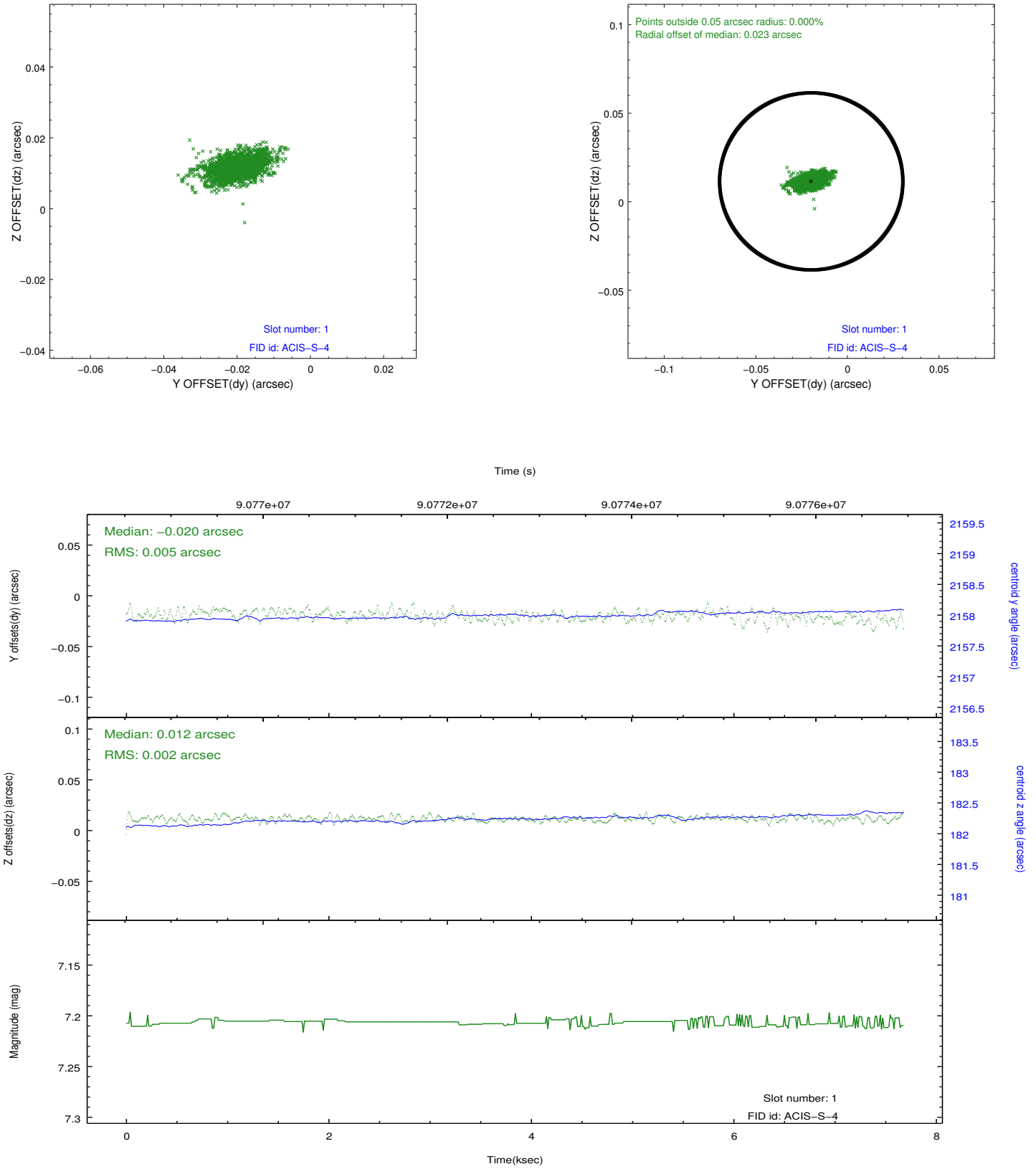


2.5 FID Slots

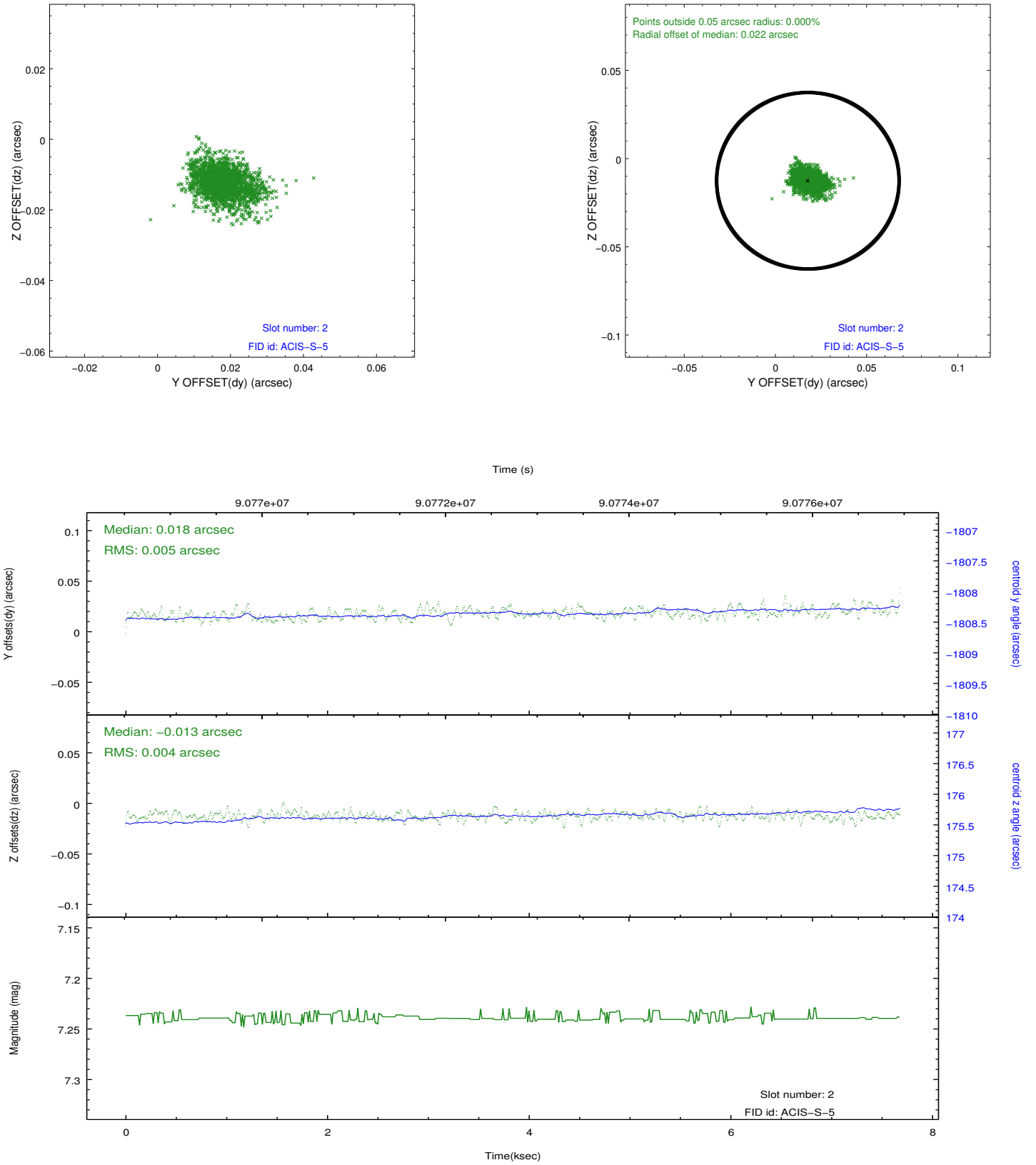
2.5.1 Slot 0



2.5.2 Slot 1



2.5.3 Slot 2



A Summary

A.1 Status

V&V Scientist	Jen Lauer
V&V Date (YYYY-MM-DD)	2012.09.11
V&V Edition	1
V&V Disposition and Status	OK
V&V Charge Time	7.6

A.2 Comments

Monitor constraint met.