

V&V Reference Report

L2 ASCDS Version : 7.6.10

Observation 422 - L2 Version 001
Chandra X-Ray Center

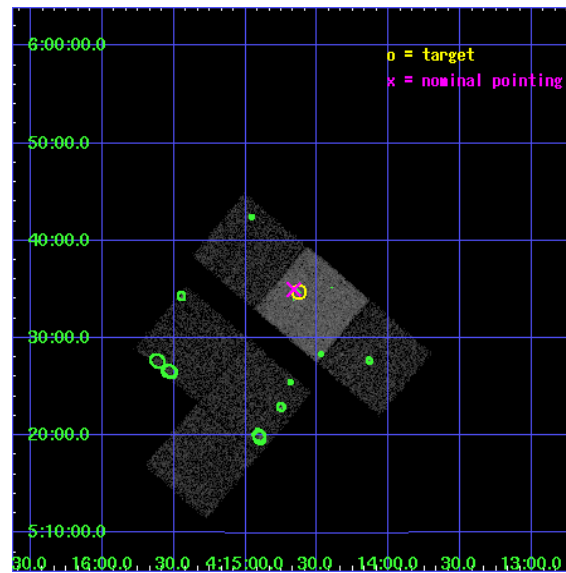
L2 Processing Date : Jun 16 2007

Contents

1	Front	2
2	OBI	3
2.1	OBI	3
2.1.1	Images	3
2.1.2	Bias	3
2.1.3	Parameters	4
2.1.4	Events	4
2.2	Compared Parameters	5
2.3	Aspect	6
2.4	Star Slots	9
2.4.1	Slot 3	9
2.4.2	Slot 4	10
2.4.3	Slot 5	11
2.4.4	Slot 6	12
2.4.5	Slot 7	13
2.5	FID Slots	14
2.5.1	Slot 0	14
2.5.2	Slot 1	15
2.5.3	Slot 2	16
3	Point Sources	17
A	Summary	18
A.1	Status	18
A.2	Comments	18

1 Front

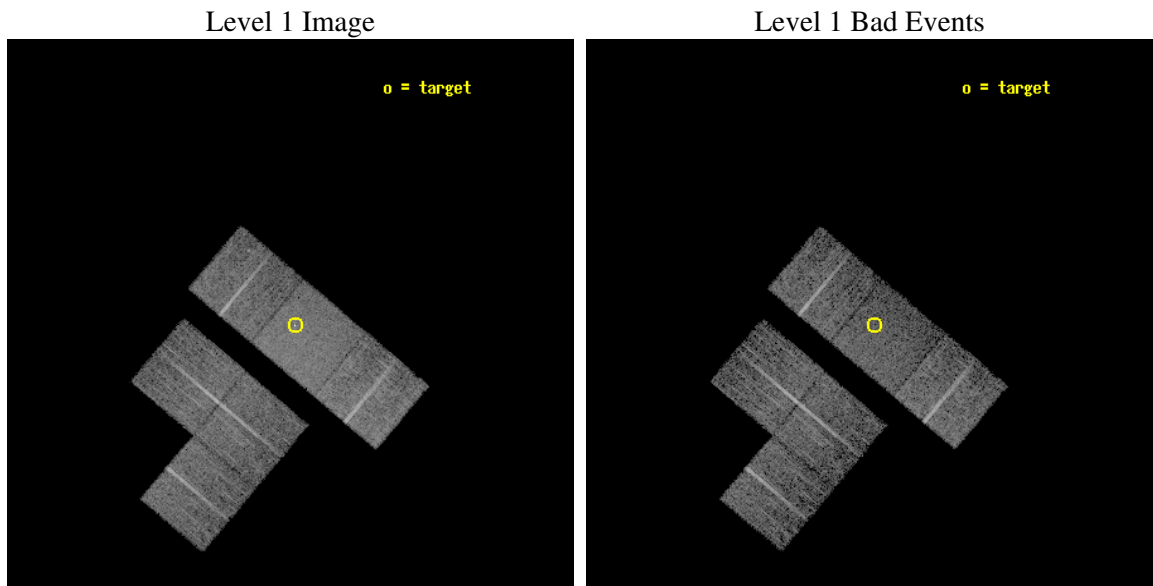
seq_num	700094
obs_id	422
title	A SURVEY OF GRAVITATIONALLY LENSED QUASARS
observer	Prof. Gordon Garmire
object	MITG J0414+0534
dtcycle	0
cycle	P
ra_targ	63.657083
dec_targ	5.578333
ra_nom	63.665620925489
dec_nom	5.5831745503819
roll_nom	40.134535911862
revision	2
ontime	7596.8000070751
livetime	7500.6047511417
ontime1	7596.8000070751
ontime2	7596.8000070751
ontime3	7596.8000070751
ontime6	7596.8000070751
ontime7	7596.8000070751
ontime8	7596.8000070751
l2events	47672



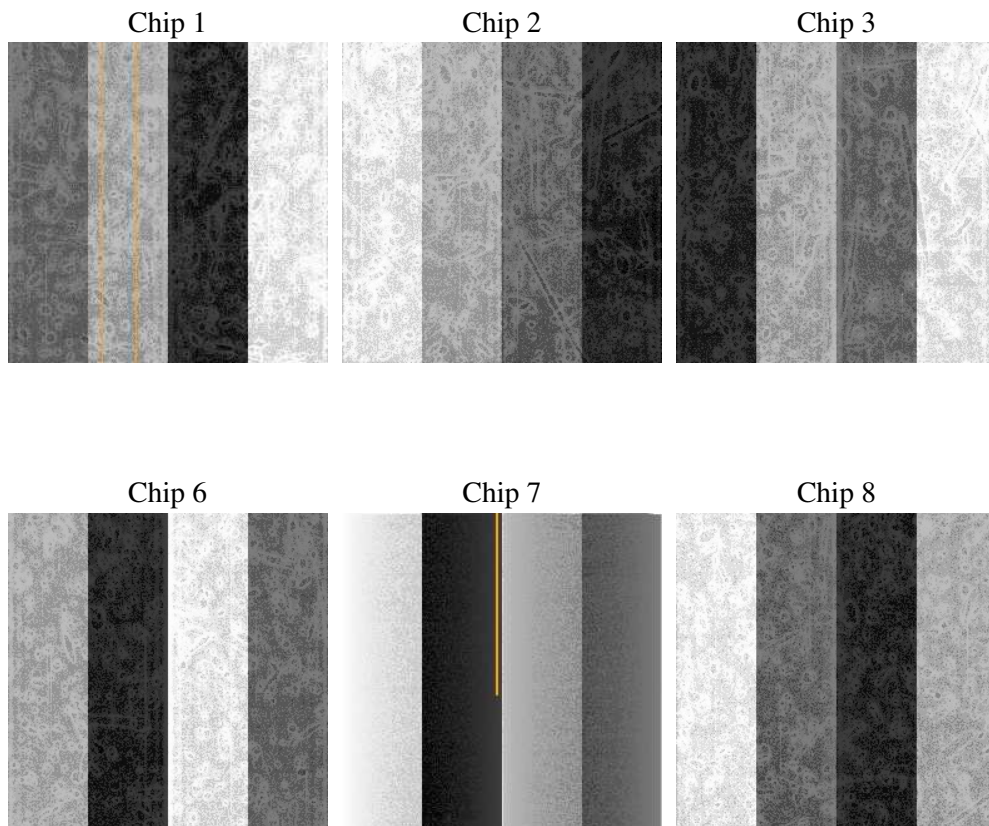
2 OBI

2.1 OBI

2.1.1 Images



2.1.2 Bias



2.1.3 Parameters

obi_num	0
ascdsver	7.6.10
caldsver	3.4.0
date	2007-06-16T13:56:34
revision	2

sched_exp_time	7500.000000
ontime	7596.8000070751
ontime1	7596.8000070751
ontime2	7596.8000070751
ontime3	7596.8000070751
ontime6	7596.8000070751
ontime7	7596.8000070751
ontime8	7596.8000070751
l1events	289337

2.1.4 Events

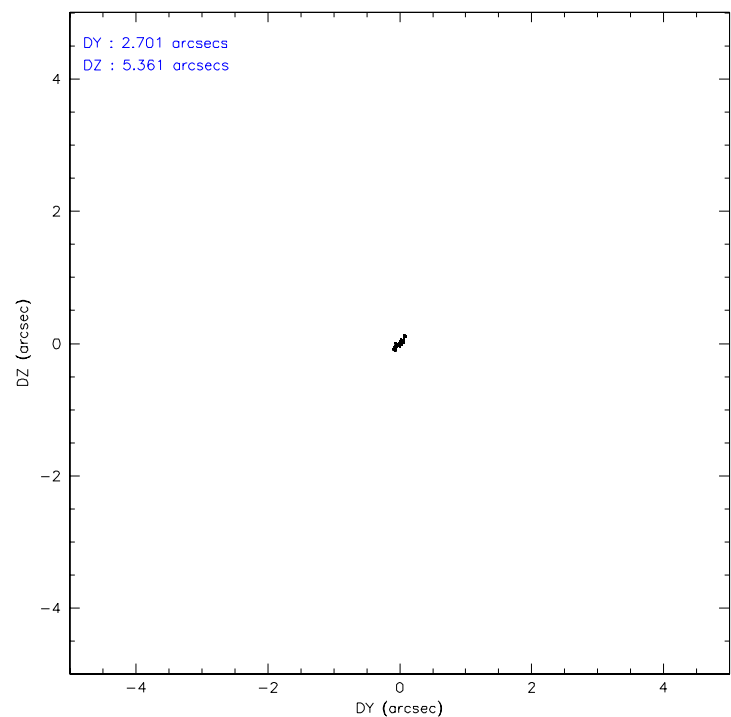
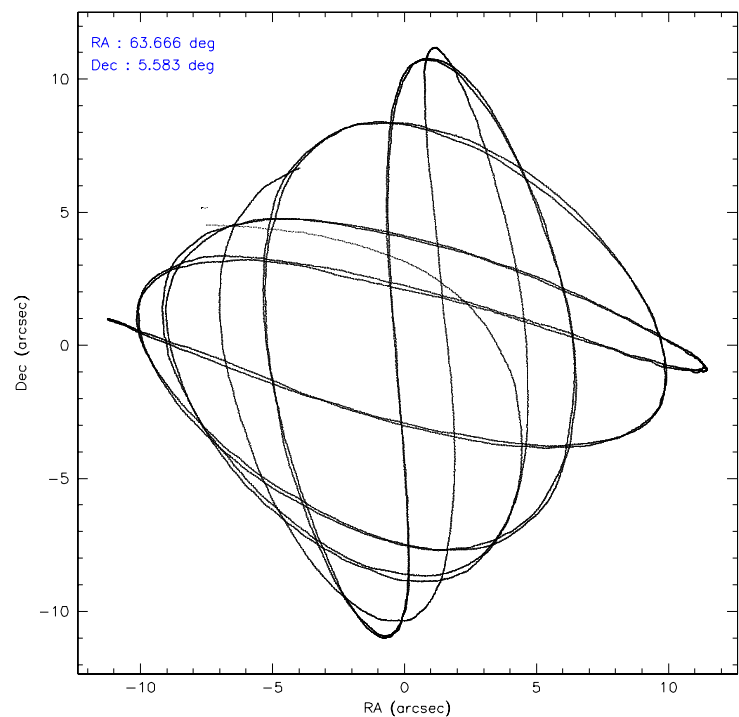
	ccd 1	ccd 2	ccd 3	ccd 6	ccd 7	ccd 8
level 1 events	42932	44660	42811	44816	56875	57243
rejected events	37151	39564	37419	39349	32611	45572
rejected %	86%	88%	87%	87%	57%	79%

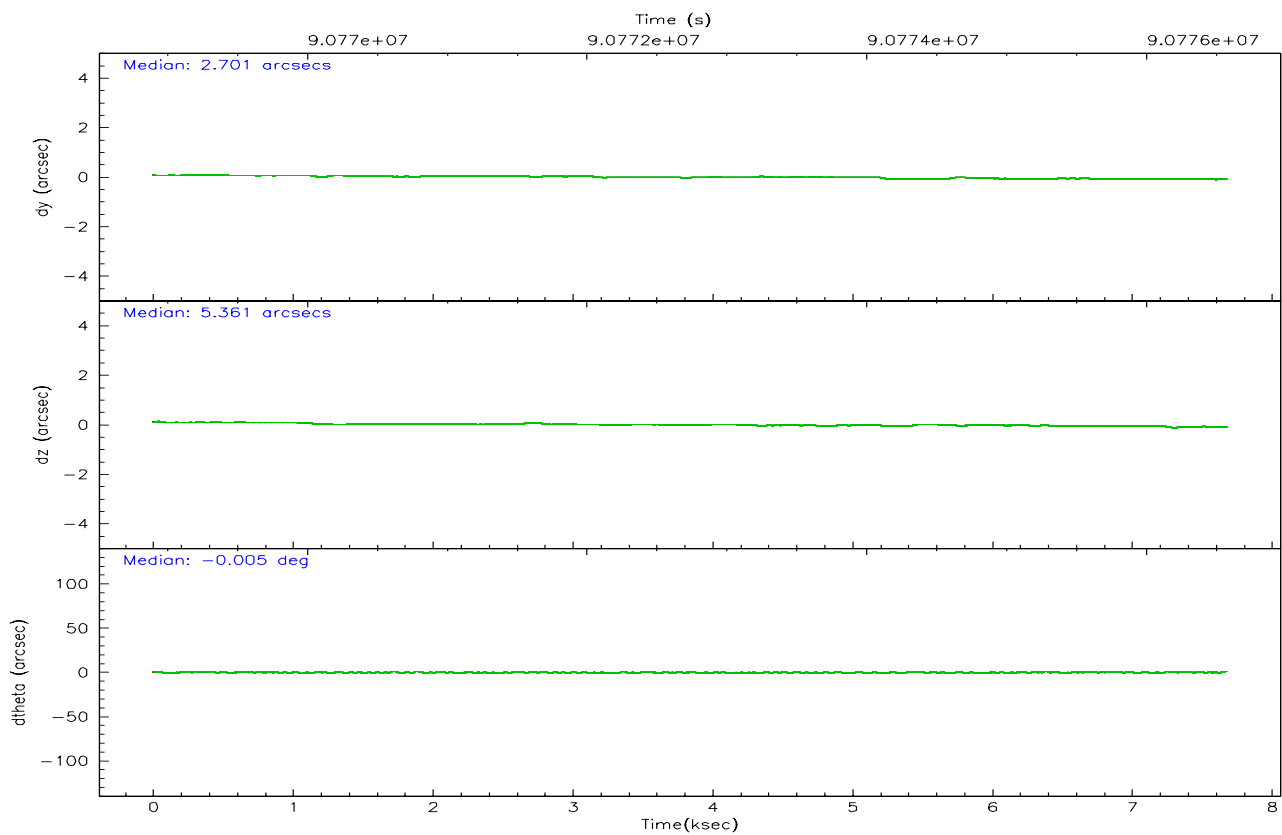
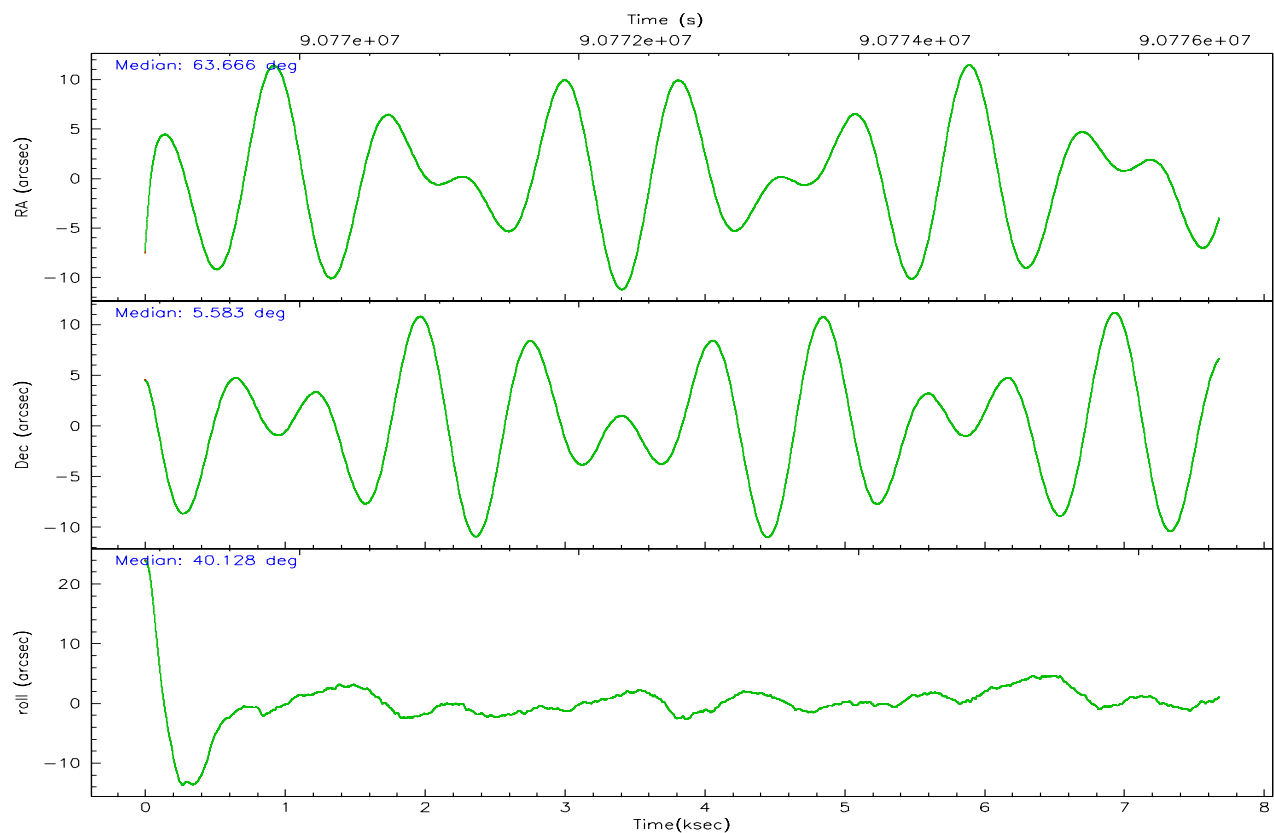
	ccd 1	ccd 2	ccd 3	ccd 6	ccd 7	ccd 8
grade 0 events	2338	2181	2431	2332	2348	3739
	5%	4%	5%	5%	4%	6%
grade 1 events	25	19	16	18	64	23
	0%	0%	0%	0%	0%	0%
grade 2 events	1172	1068	1045	1113	4786	2422
	2%	2%	2%	2%	8%	4%
grade 3 events	613	476	501	511	2290	1297
	1%	1%	1%	1%	4%	2%
grade 4 events	593	491	495	486	2149	1167
	1%	1%	1%	1%	3%	2%
grade 5 events	1679	1417	1680	1878	5292	2340
	3%	3%	3%	4%	9%	4%
grade 6 events	1078	888	927	1034	12716	3050
	2%	1%	2%	2%	22%	5%
grade 7 events	35434	38120	35716	37444	27230	43205
	82%	85%	83%	83%	47%	75%

2.2 Compared Parameters

Parameter	Planned	Actual	Parameter	Planned	Actual
Instrument	ACIS	ACIS	Obspar format version number	6	6
Detector	ACIS-123678	ACIS-123678	Obspar file type	PREDICTED	ACTUAL
Grating	NONE	NONE	Obspar update status	NONE	UPDATED
Data mode	FAINT	FAINT	Number of optional ACIS chips dropped	0	0
Observation mode	POINTING	POINTING	On-chip summing requested	N	N
Pointing RA	63.656549	63.66562092548915	Subarray requested	NONE	NONE
Pointing Dec	5.557443	5.583174550381869	Alternating exposures requested	N	N
Pointing Roll	39.978739	40.13453591186196	Primary exposure time	3.200000	3.2
SIM focus pos (mm)	-0.684267	-0.6828225247311905			
SIM defocus (mm)	0	0.001444936568705701			
SIM translation stage pos (mm)	-190.132523	-190.1425803651734			
SIM translation stage offset (mm)	0	0.01005778216563158			
Observation start time	90769072.184000	90768039.16369			
Observation start date	2000-11-16T13:36:48	2000-11-16T13:20:39			
Observation end time	90776572.184000	90777368.714046			
Observation end date	2000-11-16T15:41:48	2000-11-16T15:56:08			
Read mode	TIMED	TIMED			

2.3 Aspect



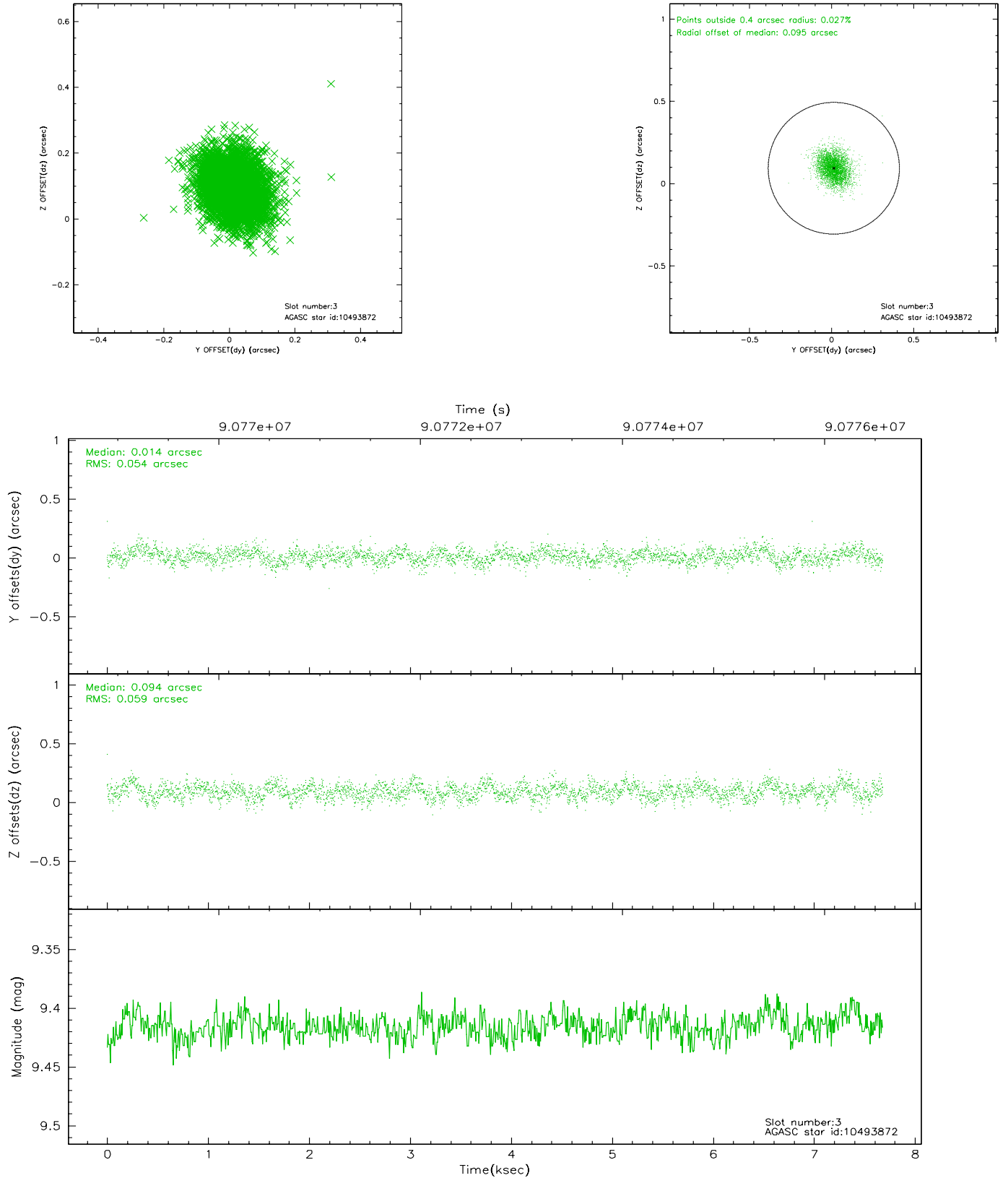


Slot Statistics

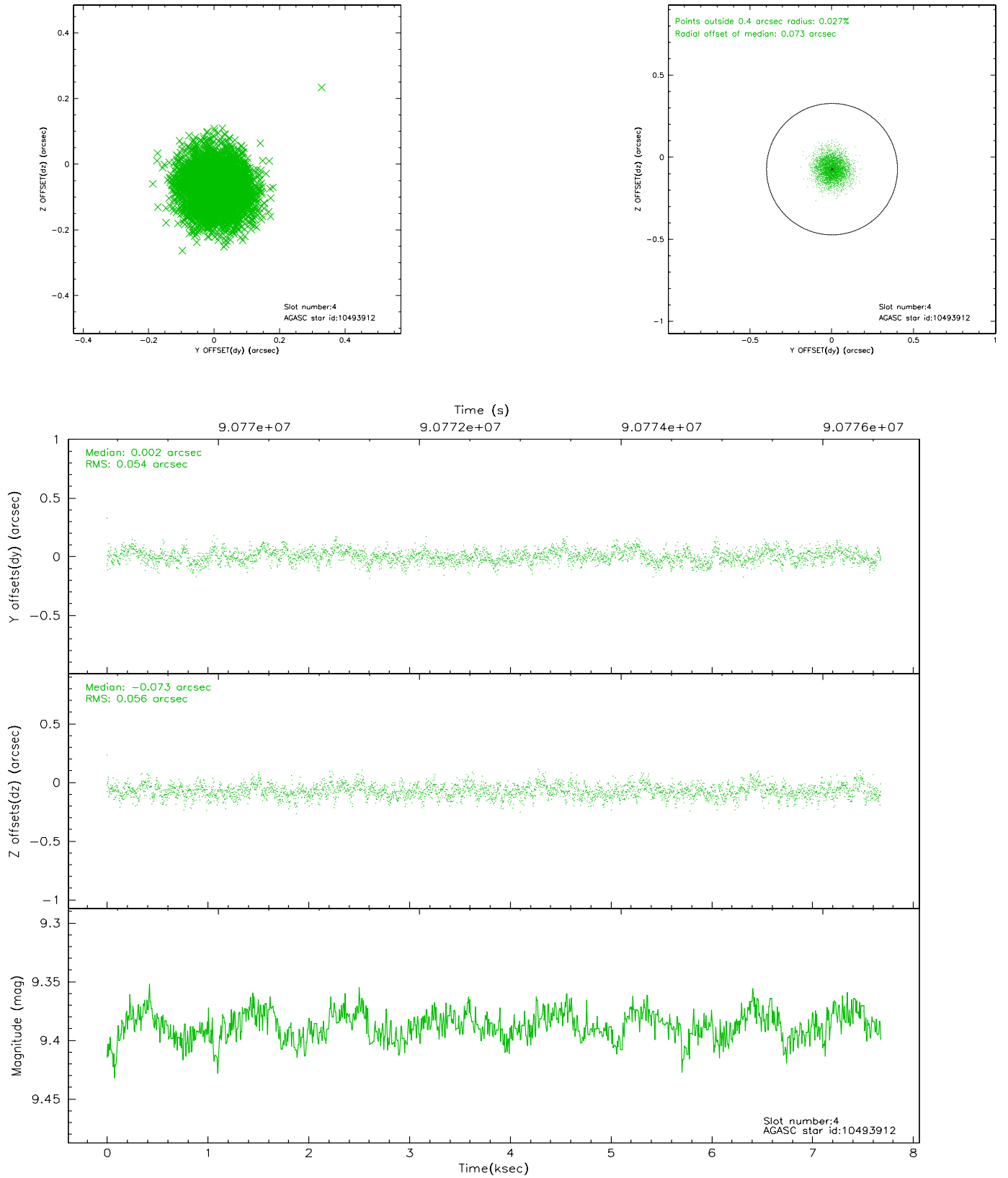
slot	status	id	mag	n_pts	med_dy	med_dz	dr1	dr2	ra	dec	mean_y	mean_z
0	FID	ACIS-S-2	7.11	1873	-0.018	0.033	0.006	0.010	0.000000	0.000000	-755.32	-1726.42
1	FID	ACIS-S-4	7.21	1873	-0.062	-0.000	0.005	0.008	0.000000	0.000000	2157.55	181.32
2	FID	ACIS-S-5	7.24	1874	0.049	-0.024	0.006	0.010	0.000000	0.000000	-1807.18	175.74
3	GUIDE	10493872	9.42	3744	0.014	0.094	0.084	0.139	63.703184	5.387990	-263.45	-573.68
4	GUIDE	10493912	9.39	3748	0.002	-0.073	0.083	0.136	63.610162	5.180568	-998.71	-932.08
5	GUIDE	10495504	9.64	3748	0.012	-0.054	0.088	0.144	63.747259	5.177624	-629.05	-1256.07
6	GUIDE	10098752	8.89	3747	-0.038	-0.048	0.083	0.129	63.736939	4.861472	-1388.47	-2104.66
7	GUIDE	10098632	9.31	3745	0.011	0.077	0.106	0.164	63.789336	4.774923	-1444.80	-2464.34

2.4 Star Slots

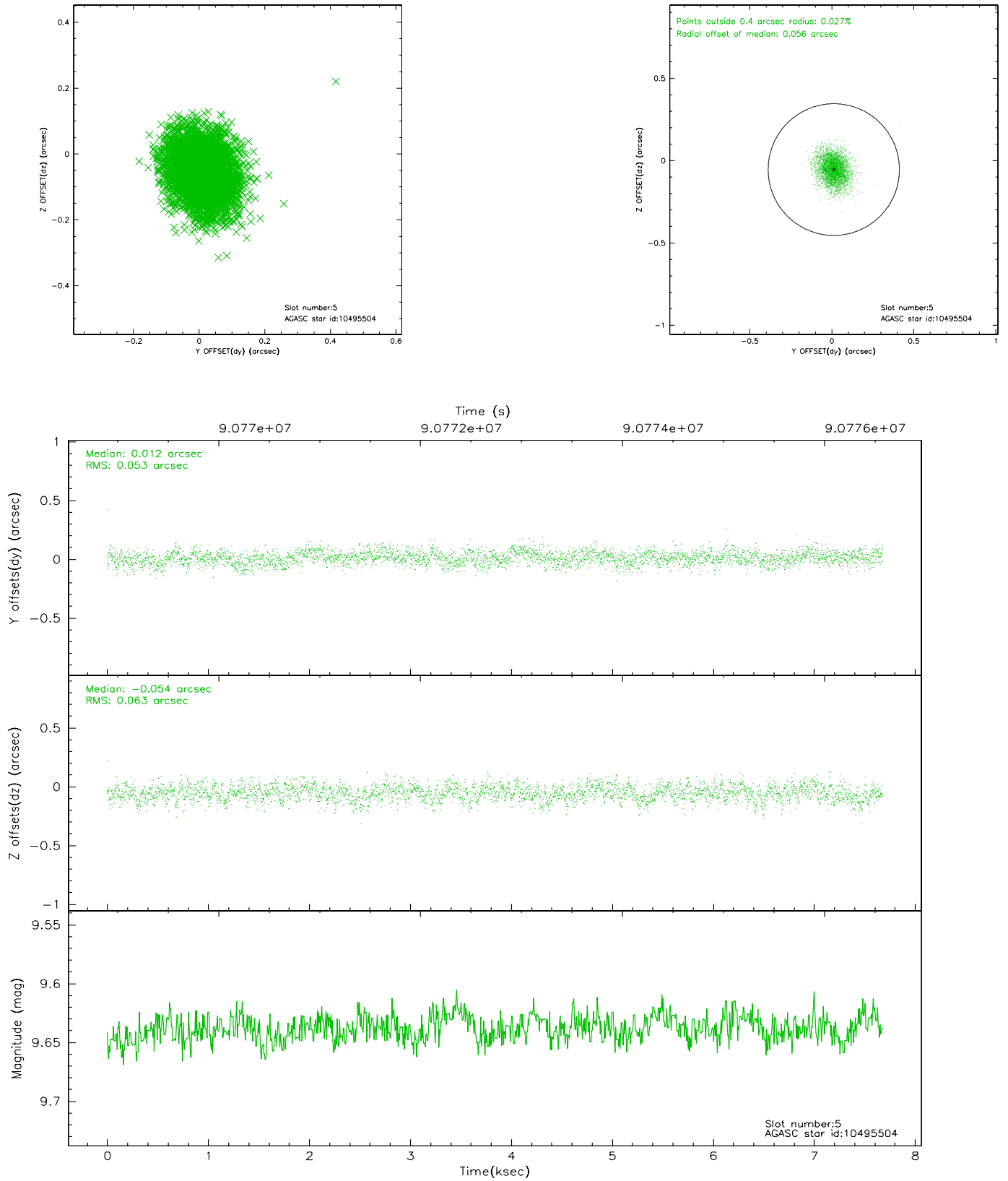
2.4.1 Slot 3



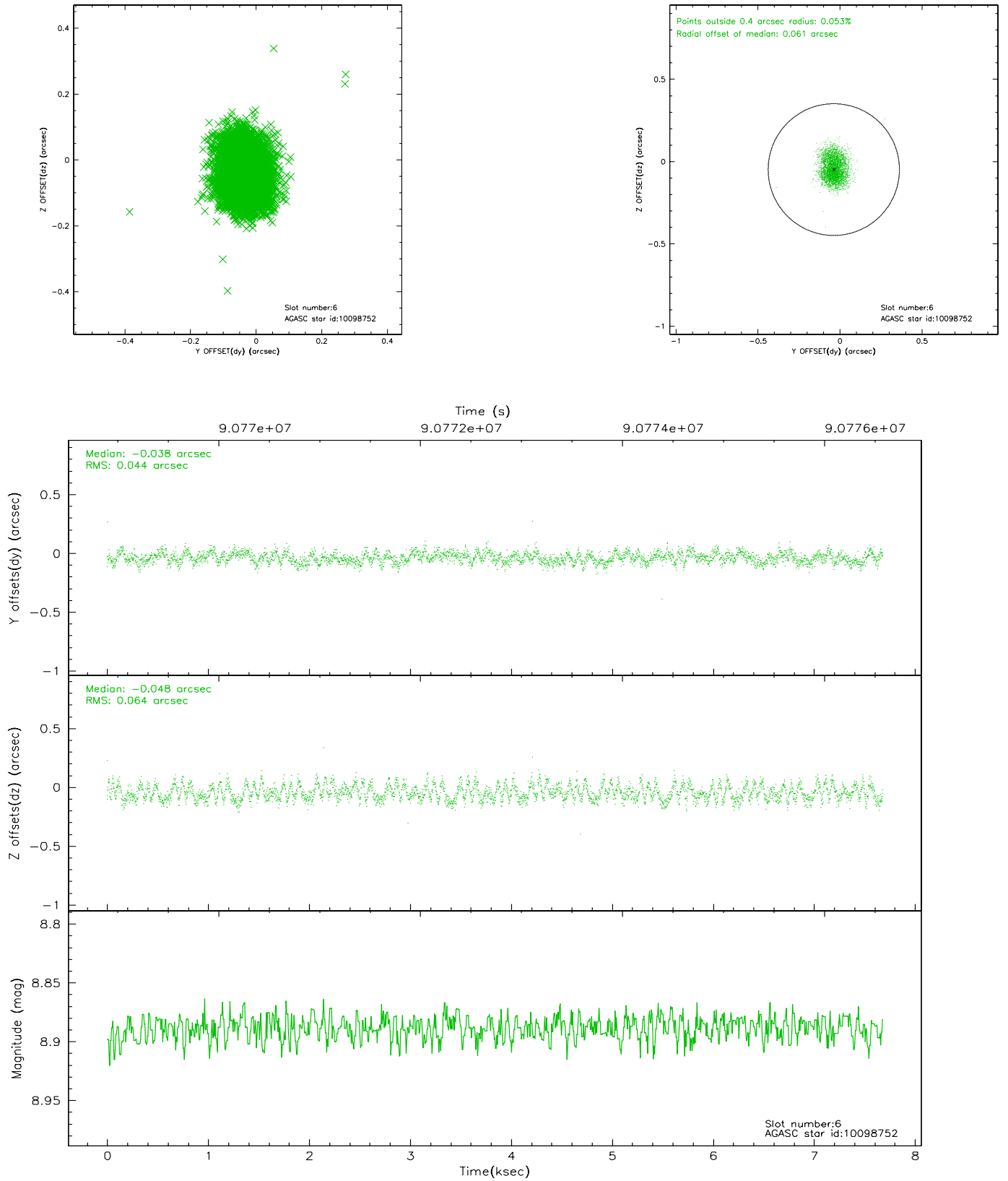
2.4.2 Slot 4



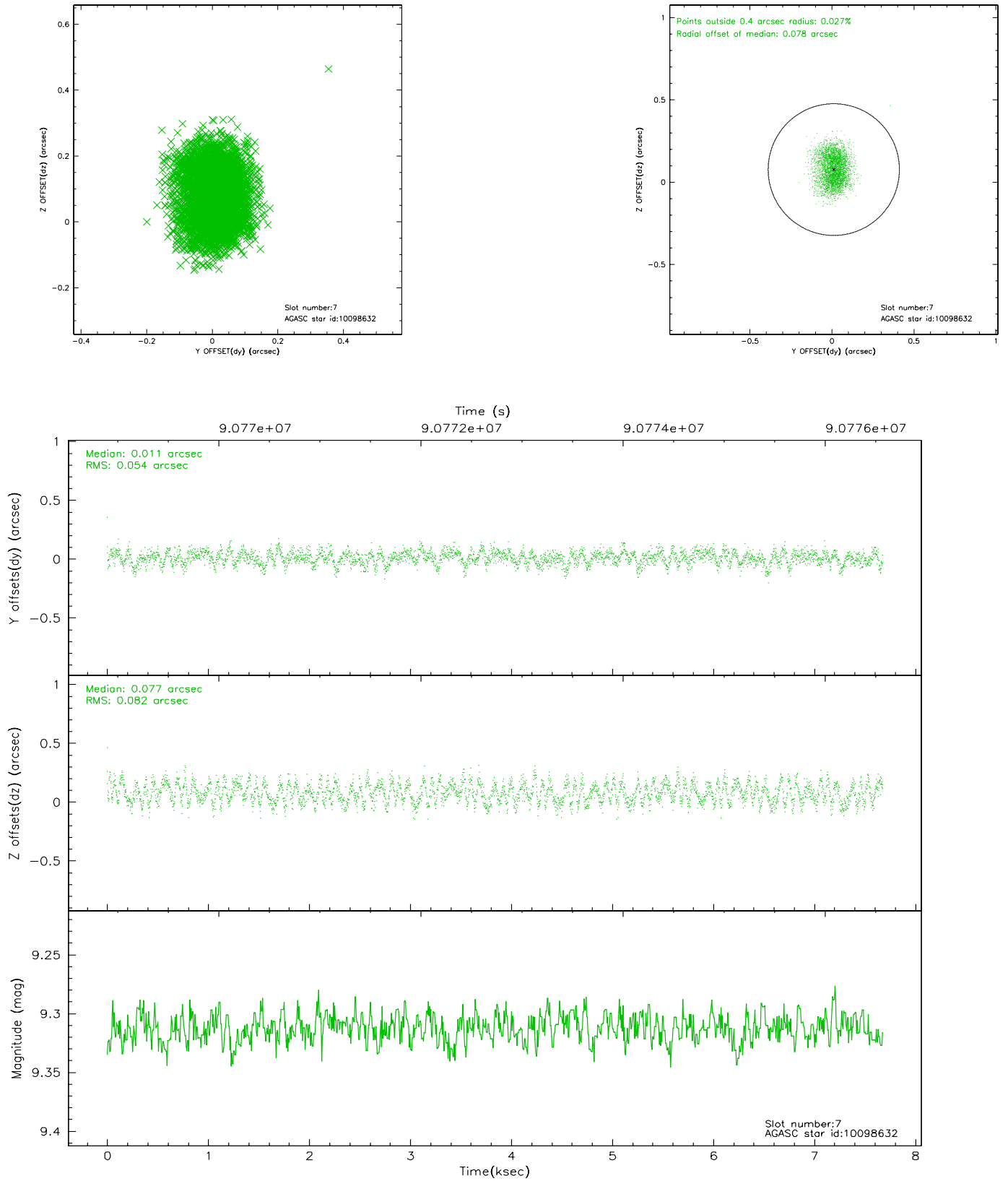
2.4.3 Slot 5



2.4.4 Slot 6

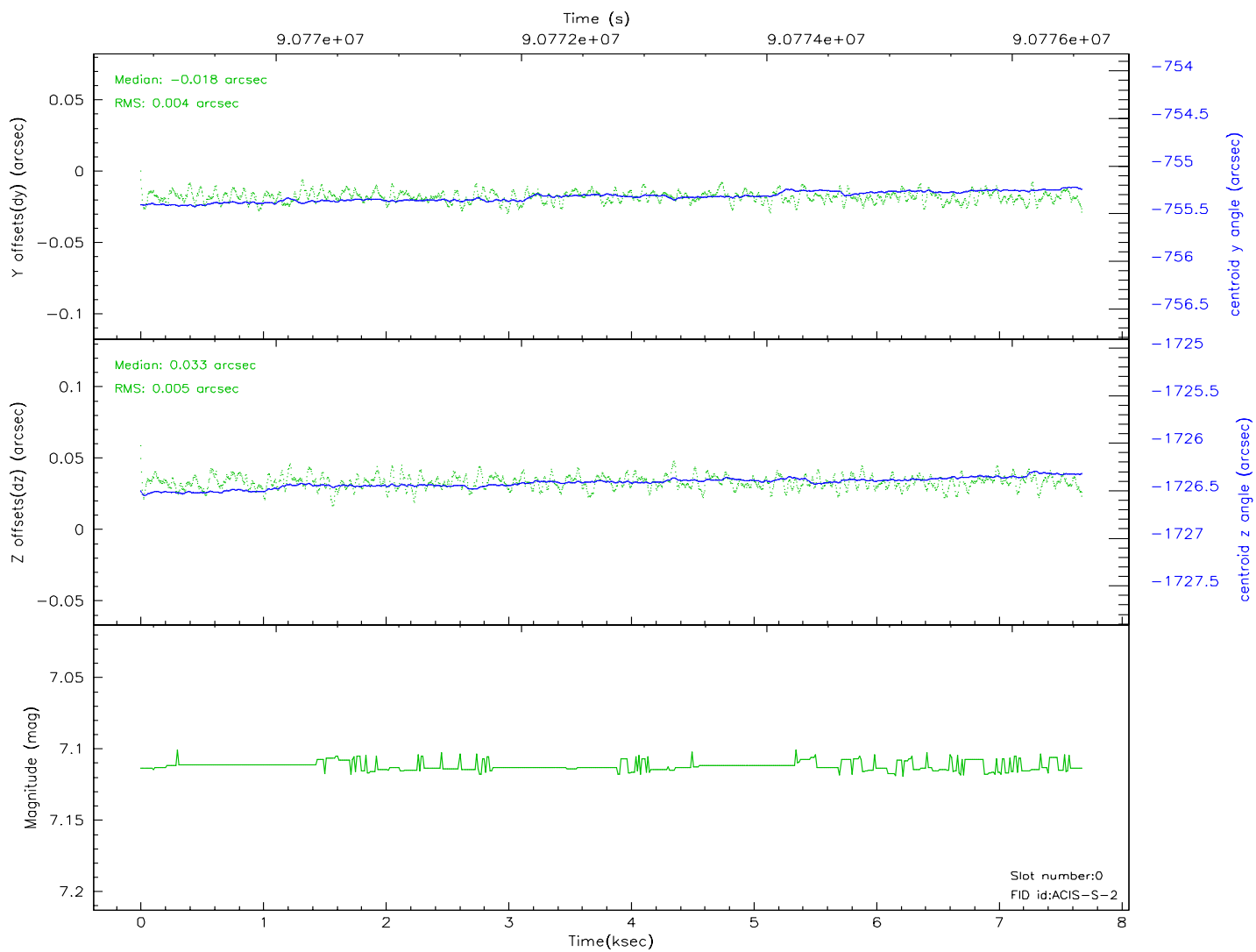
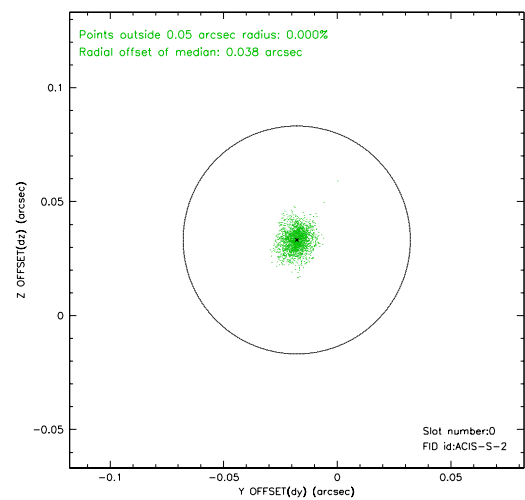
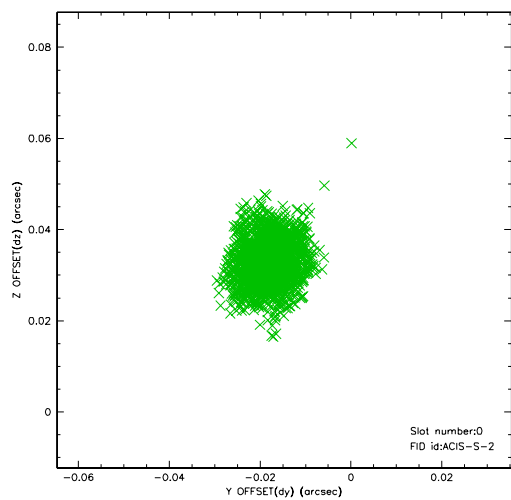


2.4.5 Slot 7

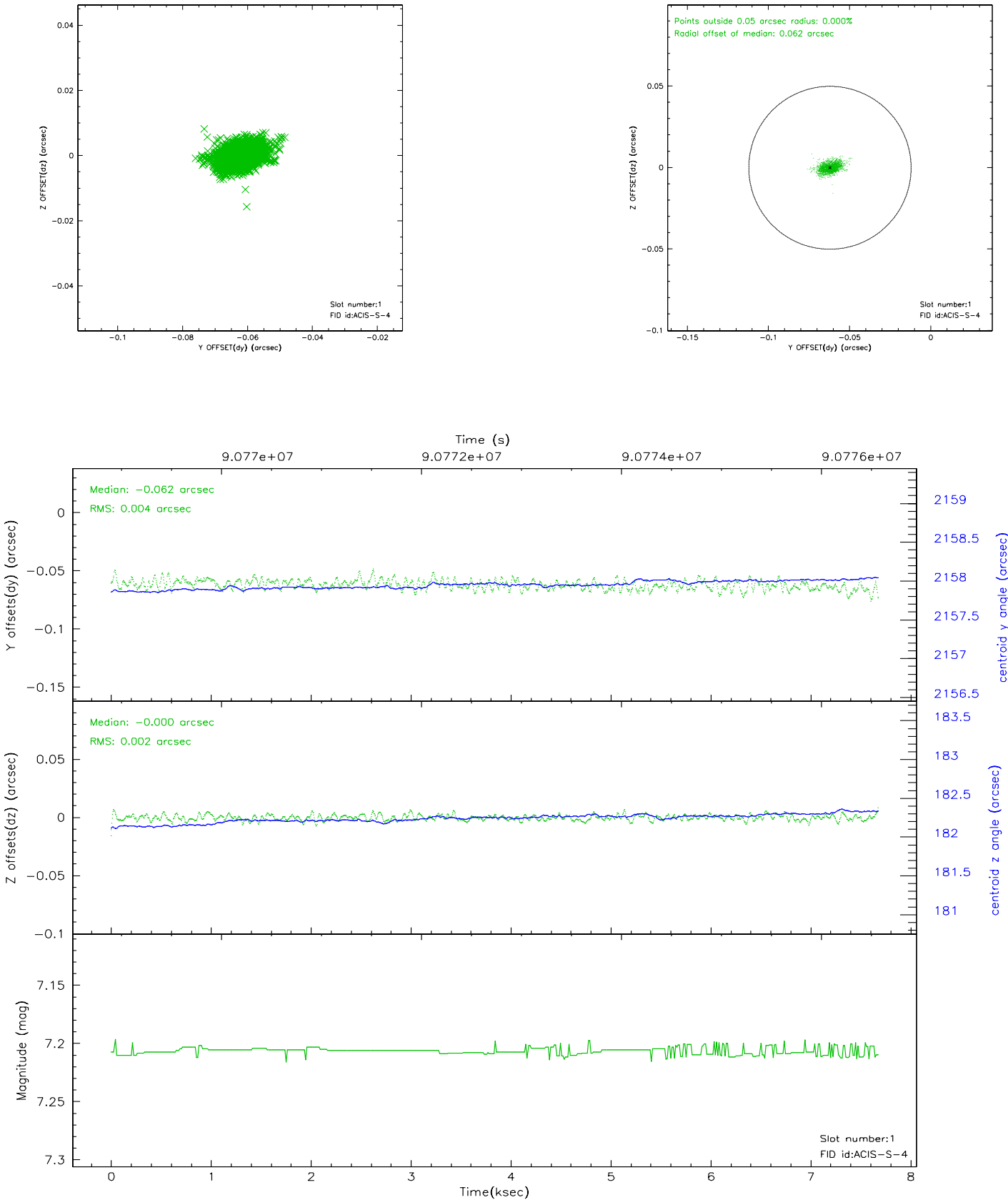


2.5 FID Slots

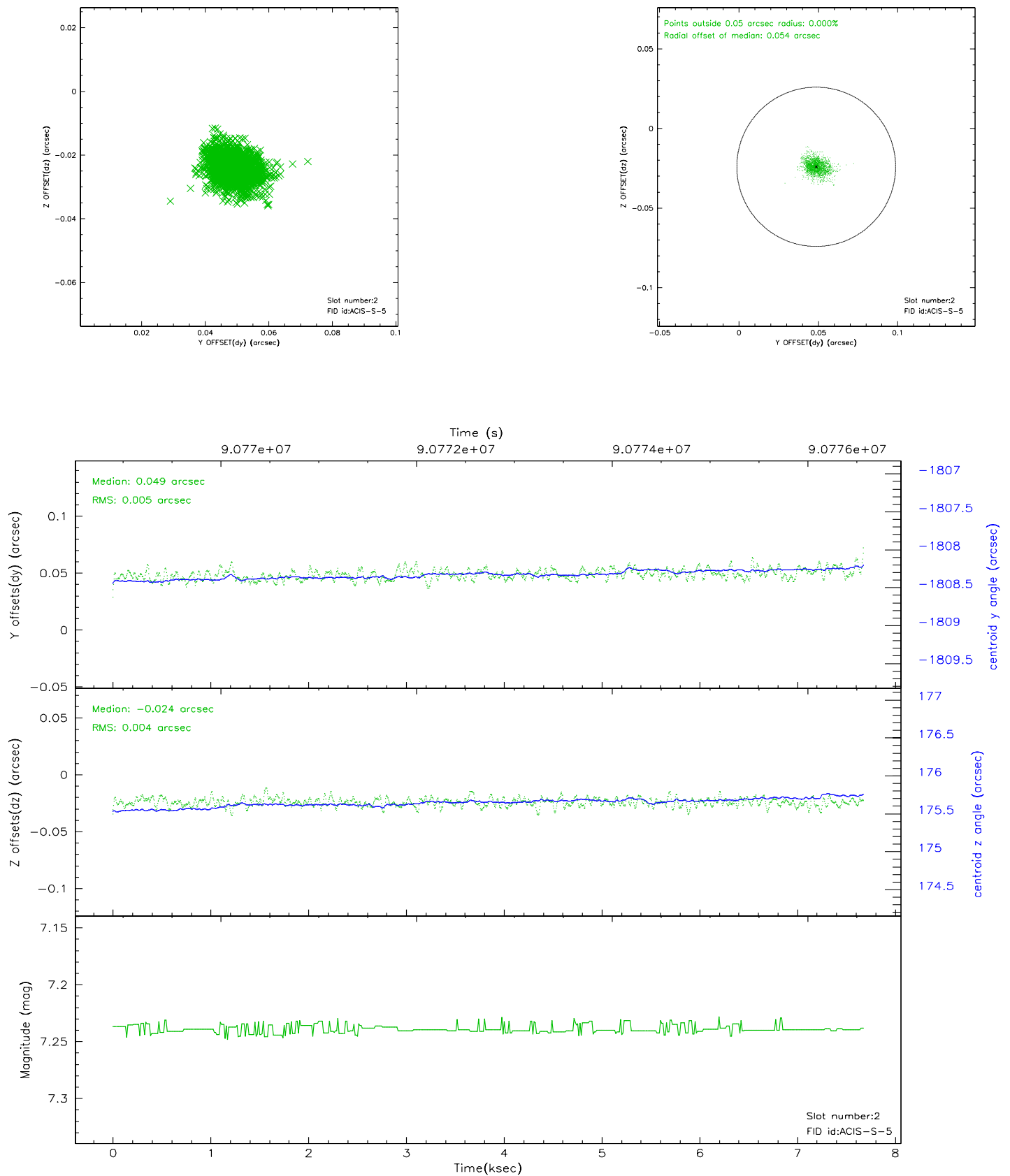
2.5.1 Slot 0



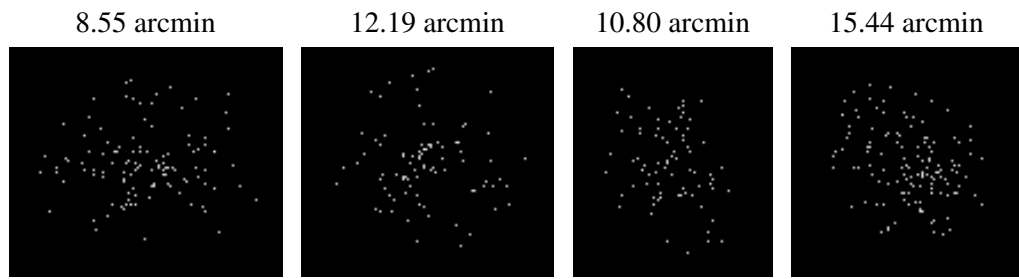
2.5.2 Slot 1



2.5.3 Slot 2



3 Point Sources



A Summary

A.1 Status

V&V Scientist	Jen Lauer
V&V Date (YYYY-MM-DD)	2007.06.18
V&V Edition	1
V&V Disposition and Status	OK
V&V Charge Time	7.6

A.2 Comments

Monitor constraint met.