

# V&V Reference Report

## L2 ASCDS Version : 7.6.8

Observation 4052 - L2 Version 001  
Chandra X-Ray Center

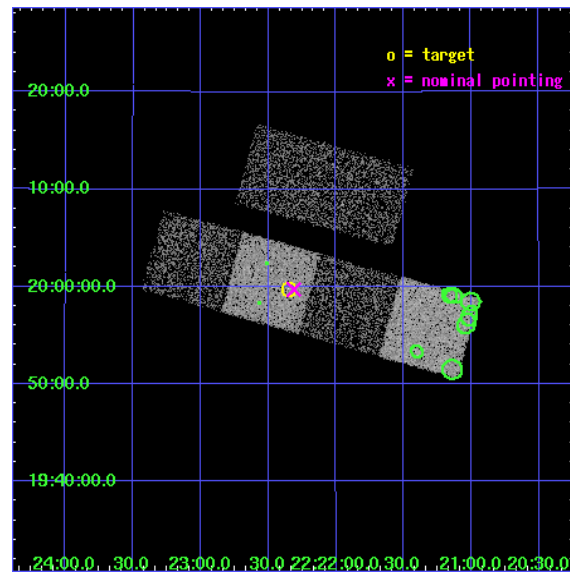
L2 Processing Date : Jul 5 2006

## Contents

<b>1</b>	<b>Front</b>	<b>2</b>
<b>2</b>	<b>OBI</b>	<b>3</b>
2.1	OBI . . . . .	3
2.1.1	Images . . . . .	3
2.1.2	Bias . . . . .	3
2.1.3	Parameters . . . . .	4
2.1.4	Events . . . . .	4
2.2	Compared Parameters . . . . .	5
2.3	Aspect . . . . .	6
2.4	Star Slots . . . . .	9
2.4.1	Slot 3 . . . . .	9
2.4.2	Slot 4 . . . . .	10
2.4.3	Slot 5 . . . . .	11
2.4.4	Slot 6 . . . . .	12
2.4.5	Slot 7 . . . . .	13
2.5	FID Slots . . . . .	14
2.5.1	Slot 0 . . . . .	14
2.5.2	Slot 1 . . . . .	15
2.5.3	Slot 2 . . . . .	16
<b>3</b>	<b>Point Sources</b>	<b>17</b>
<b>A</b>	<b>Summary</b>	<b>18</b>
A.1	Status . . . . .	18
A.2	Comments . . . . .	18

# 1 Front

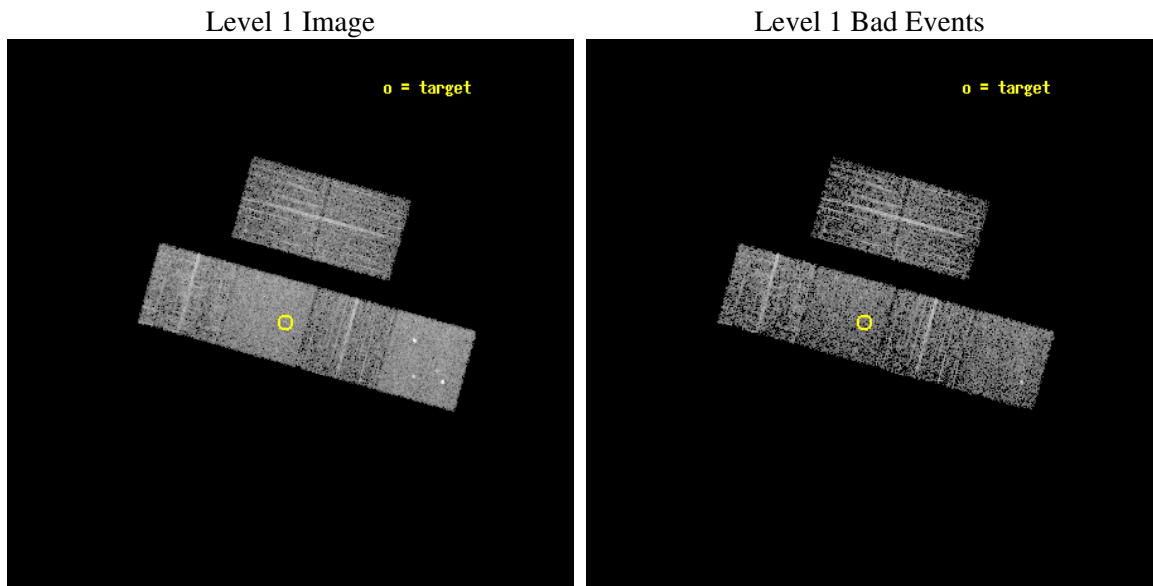
seq_num	700731
obs_id	4052
title	WHY DO WE SEE BROAD LINES IN X-RAY ABSORBED AGN?
observer	Dr. BELINDA WILKES
object	2MASS222221+195947
dtcycle	0
cycle	P
ra_targ	335.587917
dec_targ	19.9965
ra_nom	335.57786064319
dec_nom	19.995551976486
roll_nom	195.4823746766
revision	2
ontime	3635.1999864578
livetime	3589.1688953747
ontime2	3635.1999864578
ontime3	3635.1999864578
ontime5	3635.1999864578
ontime6	3635.1999864578
ontime7	3635.1999864578
ontime8	3635.1999864578
l2events	33899



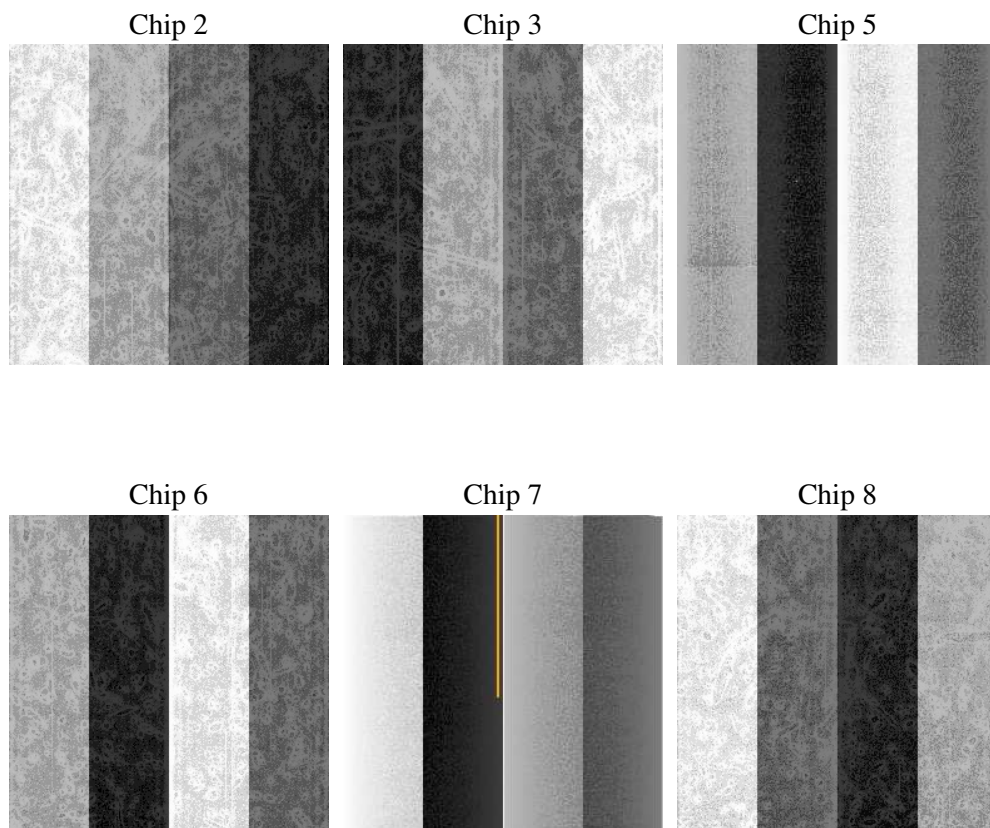
## 2 OBI

### 2.1 OBI

#### 2.1.1 Images



#### 2.1.2 Bias



### 2.1.3 Parameters

obi_num	0
ascdsver	7.6.8
caldsver	3.2.2
date	2006-07-06T00:47:54
revision	2

sched_exp_time	3500.000000
ontime	4035.048233062
ontime2	4035.048233062
ontime3	4035.048233062
ontime5	4035.0482529998
ontime6	4035.048233062
ontime7	4035.048233062
ontime8	4035.048233062
l1events	176051

### 2.1.4 Events

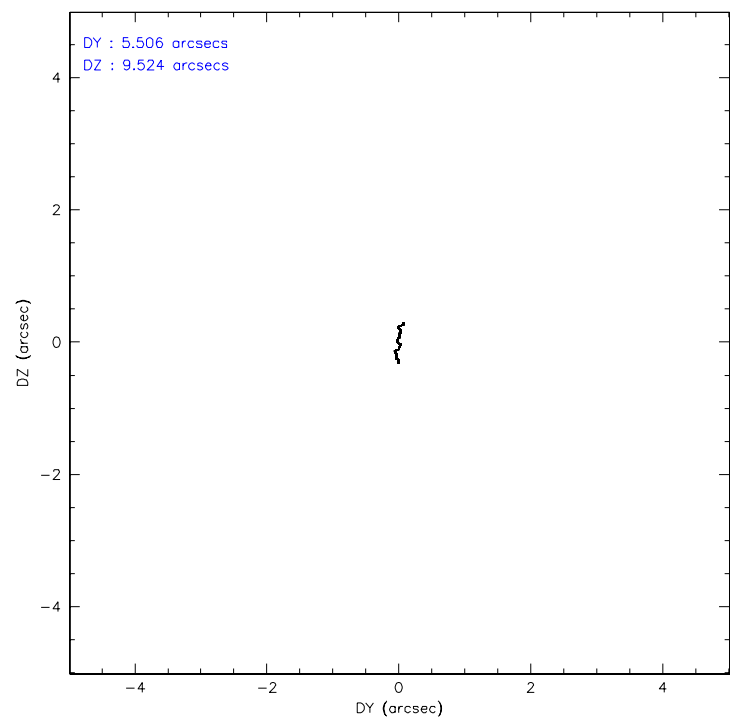
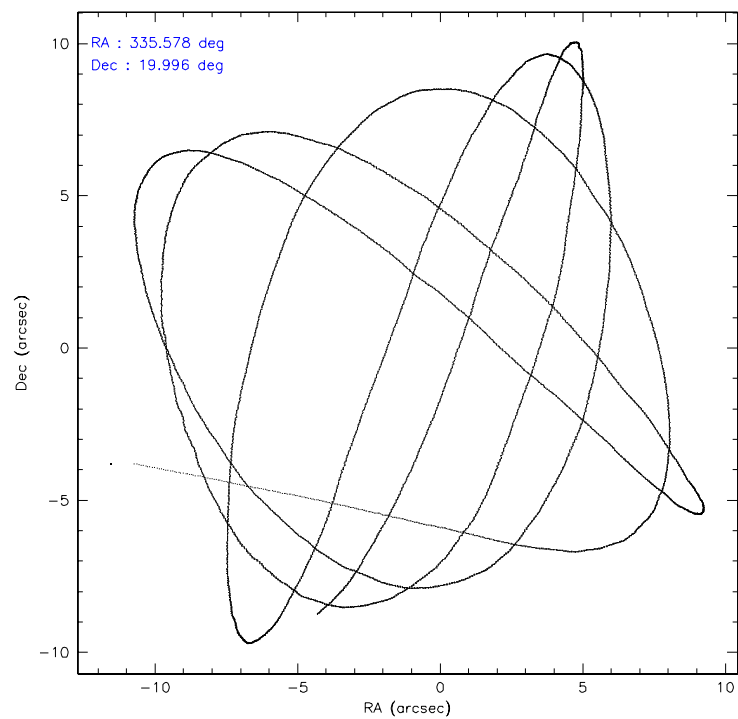
	ccd 2	ccd 3	ccd 5	ccd 6	ccd 7	ccd 8
level 1 events	25006	24201	37113	24836	33321	31574
rejected events	22415	21658	22038	22159	21899	26067
rejected %	89%	89%	59%	89%	65%	82%

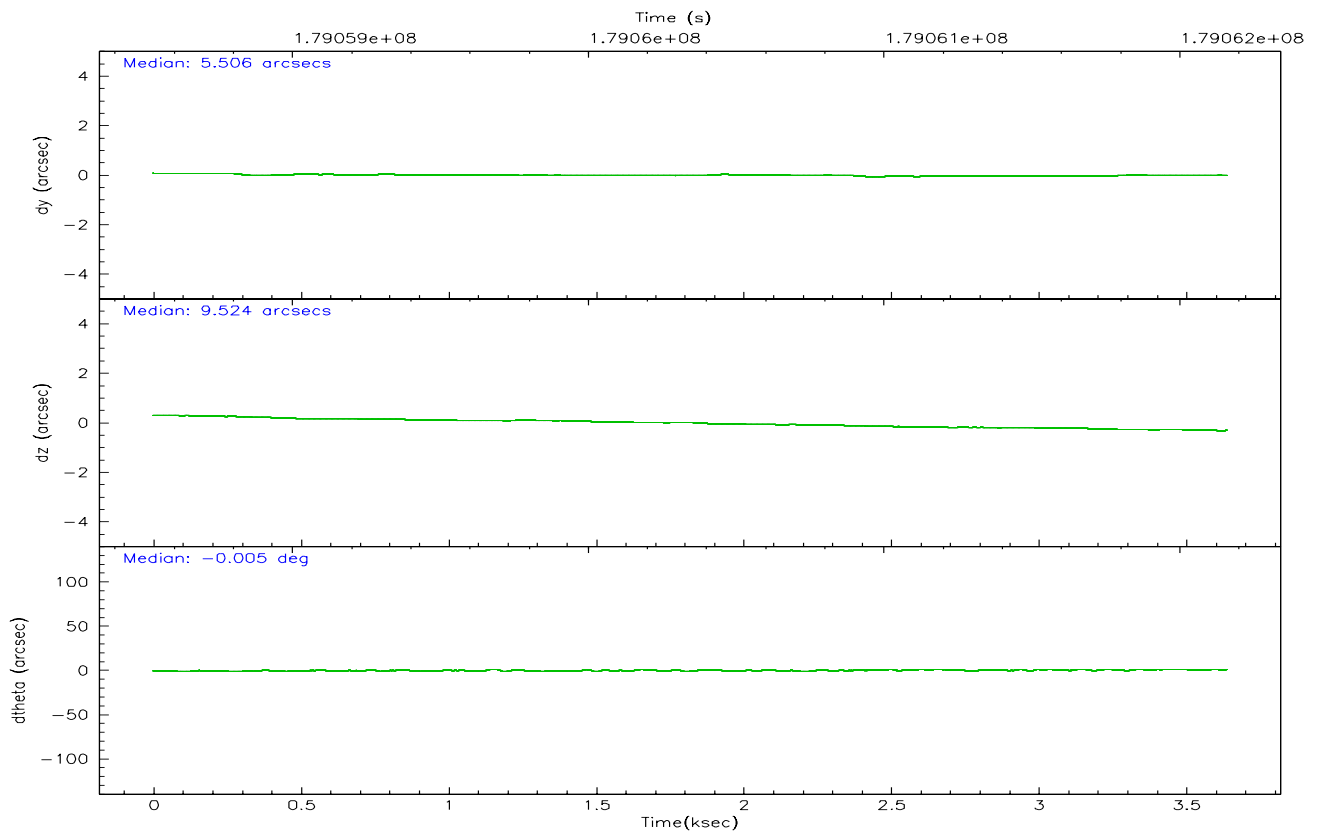
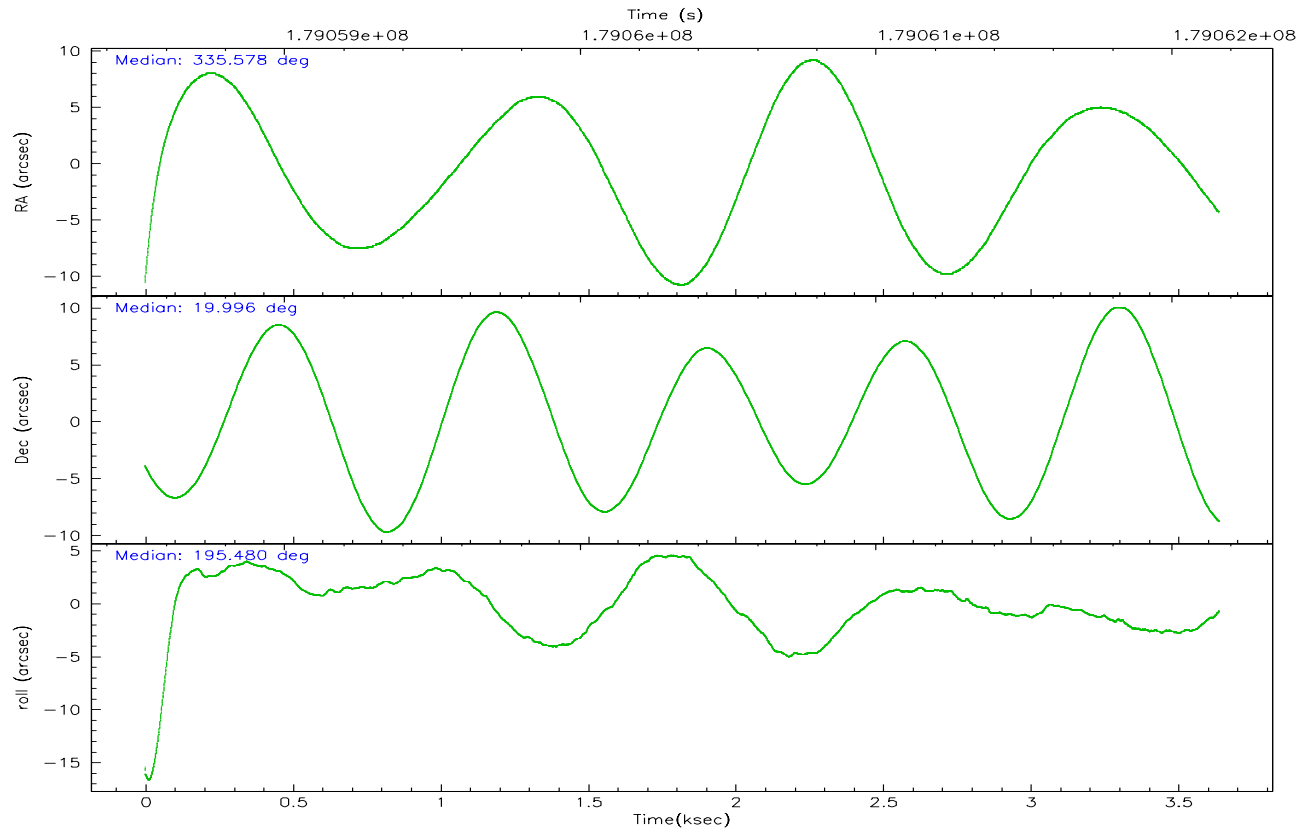
	ccd 2	ccd 3	ccd 5	ccd 6	ccd 7	ccd 8
grade 0 events	1320	1265	1713	1173	734	1940
	5%	5%	4%	4%	2%	6%
grade 1 events	14	10	18	10	18	24
	0%	0%	0%	0%	0%	0%
grade 2 events	558	530	5226	615	3171	1302
	2%	2%	14%	2%	9%	4%
grade 3 events	273	288	327	288	626	661
	1%	1%	0%	1%	1%	2%
grade 4 events	280	273	336	297	625	608
	1%	1%	0%	1%	1%	1%
grade 5 events	983	1114	1781	1077	2115	1457
	3%	4%	4%	4%	6%	4%
grade 6 events	450	486	9152	574	7527	1558
	1%	2%	24%	2%	22%	4%
grade 7 events	21128	20235	18560	20802	18505	24024
	84%	83%	50%	83%	55%	76%

## 2.2 Compared Parameters

Parameter	Planned	Actual	Parameter	Planned	Actual
Instrument	ACIS	ACIS	Obspar format version number	6	6
Detector	ACIS-235678	ACIS-235678	Obspar file type	PREDICTED	ACTUAL
Grating	NONE	NONE	Obspar update status	NONE	UPDATED
Data mode	FAINT	FAINT	On-chip summing requested	N	N
Observation mode	POINTING	POINTING	Subarray requested	NONE	NONE
Pointing RA	335.597711	335.5778606431942	Alternating exposures requested	N	N
Pointing Dec	20.015267	19.99555197648555	Primary exposure time	0.000000	3.2
Pointing Roll	195.319024	195.4823746766012			
SIM focus pos (mm)	-0.684267	-0.6828225247311905			
SIM defocus (mm)	0	0.001444936568705701			
SIM translation stage pos (mm)	-190.132523	-190.1425803651734			
SIM translation stage offset (mm)	0	0.01005778216563158			
Observation start time	179058666.184000	179057419.68066			
Observation start date	2003-09-04T10:30:02	2003-09-04T10:10:19			
Observation end time	179062166.184000	179063156.0934			
Observation end date	2003-09-04T11:28:22	2003-09-04T11:45:56			
Read mode	TIMED	TIMED			

2.3 Aspect





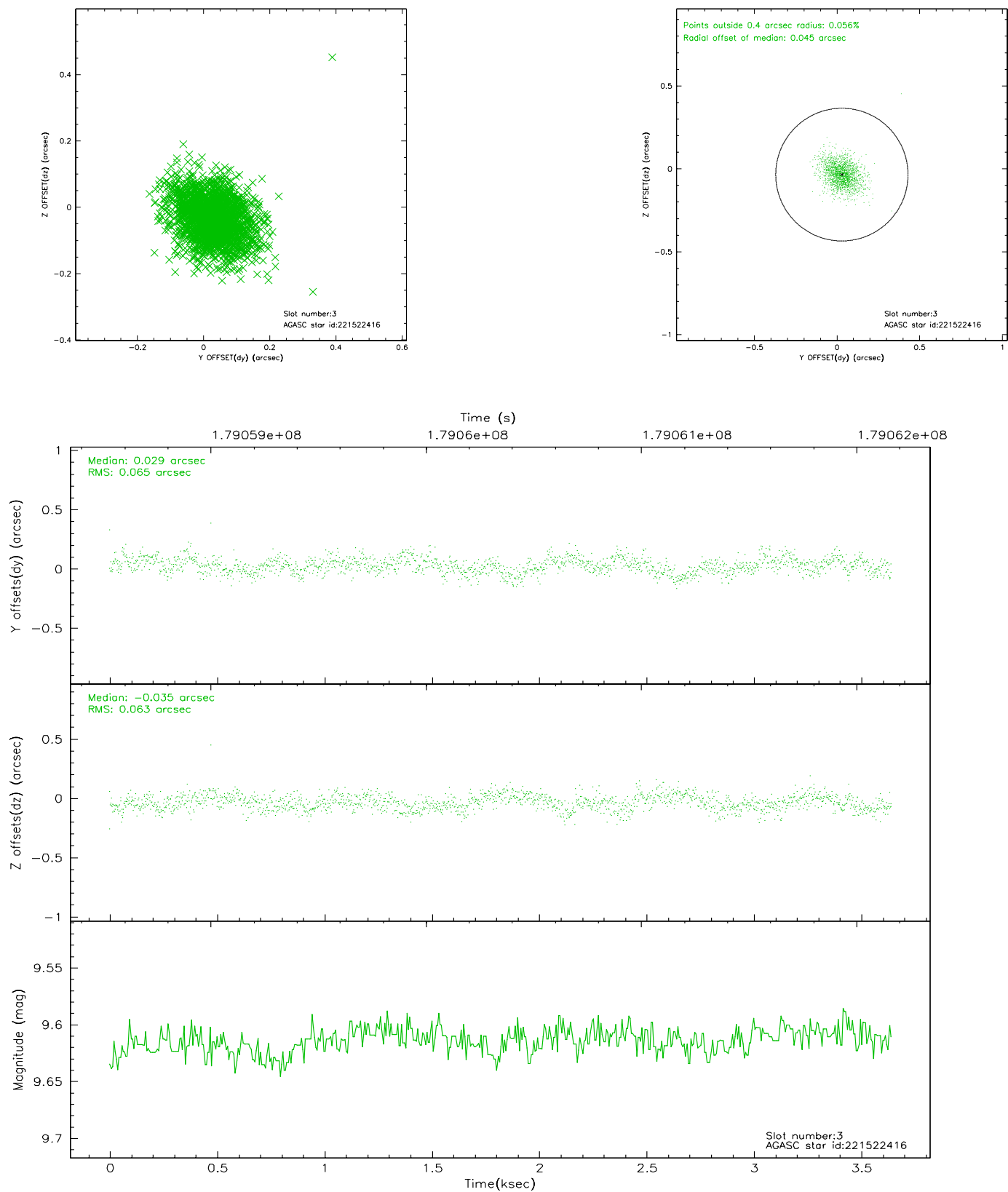
### Slot Statistics

slot	status	id	mag	n_pts	med_dy	med_dz	dr1	dr2	ra	dec	mean_y	mean_z
0	FID	ACIS-S-1	7.18	888	-0.011	0.029	0.008	0.012	0.000000	0.000000	937.78	-1726.30
1	FID	ACIS-S-5	7.23	888	-0.039	-0.004	0.008	0.013	0.000000	0.000000	-1810.24	169.49
2	FID	ACIS-S-6	7.34	888	0.028	-0.014	0.009	0.016	0.000000	0.000000	401.55	815.35
3	GUIDE	221522416	9.61	1776	0.029	-0.035	0.094	0.157	335.801392	19.787525	-448.26	972.52
4	GUIDE	221523728	9.69	1776	-0.030	0.056	0.107	0.174	335.948872	20.537809	-1638.59	-1502.36
5	GUIDE	221524824	9.69	1777	0.032	0.028	0.139	0.213	335.185669	19.540573	1799.16	1276.43
6	GUIDE	223220768	8.78	1776	-0.029	0.099	0.066	0.102	336.138894	20.276133	-2009.62	-425.03
7	GUIDE	223222032	8.75	1776	0.005	-0.149	0.070	0.110	336.302529	20.086316	-2367.68	377.46

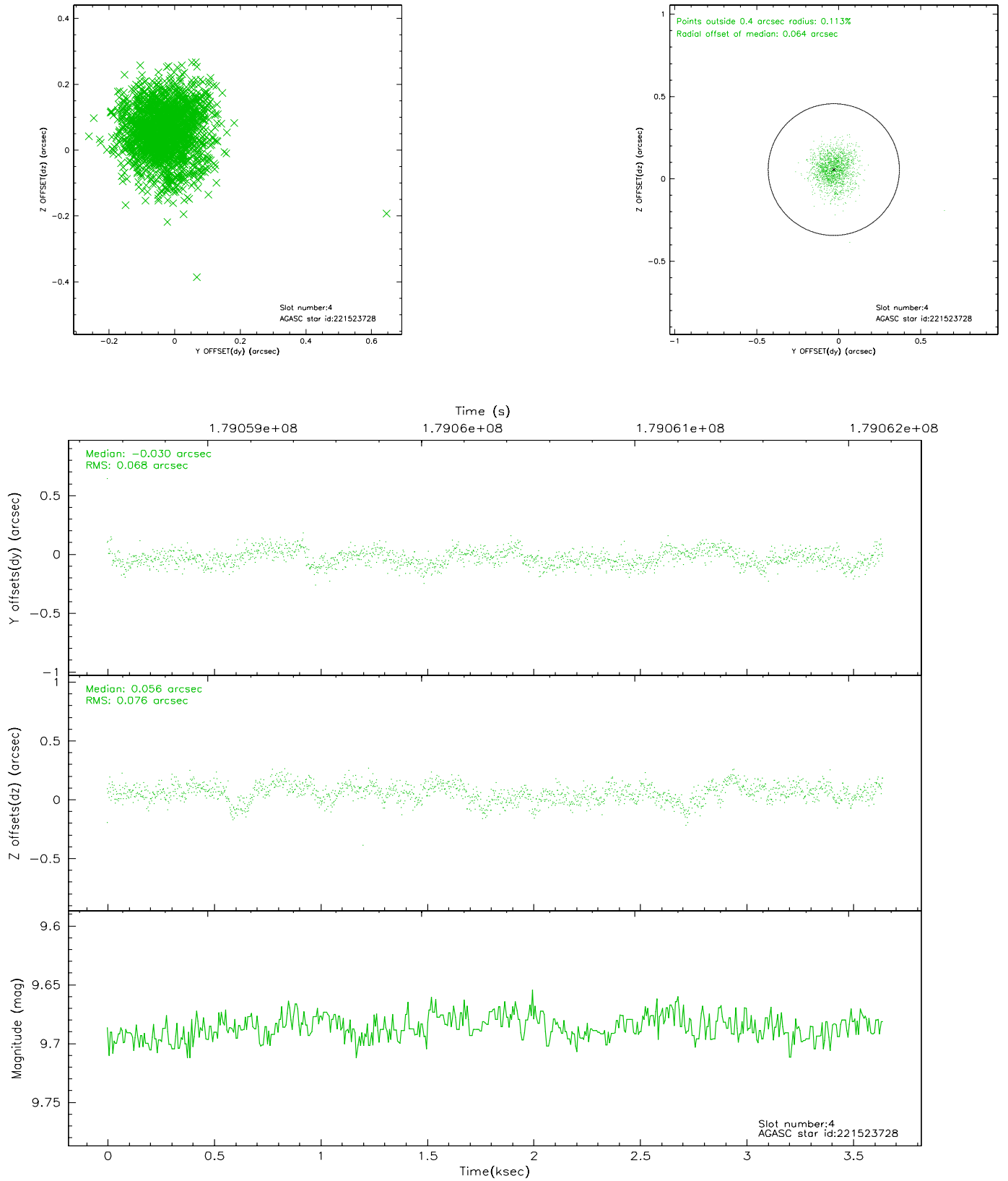


## 2.4 Star Slots

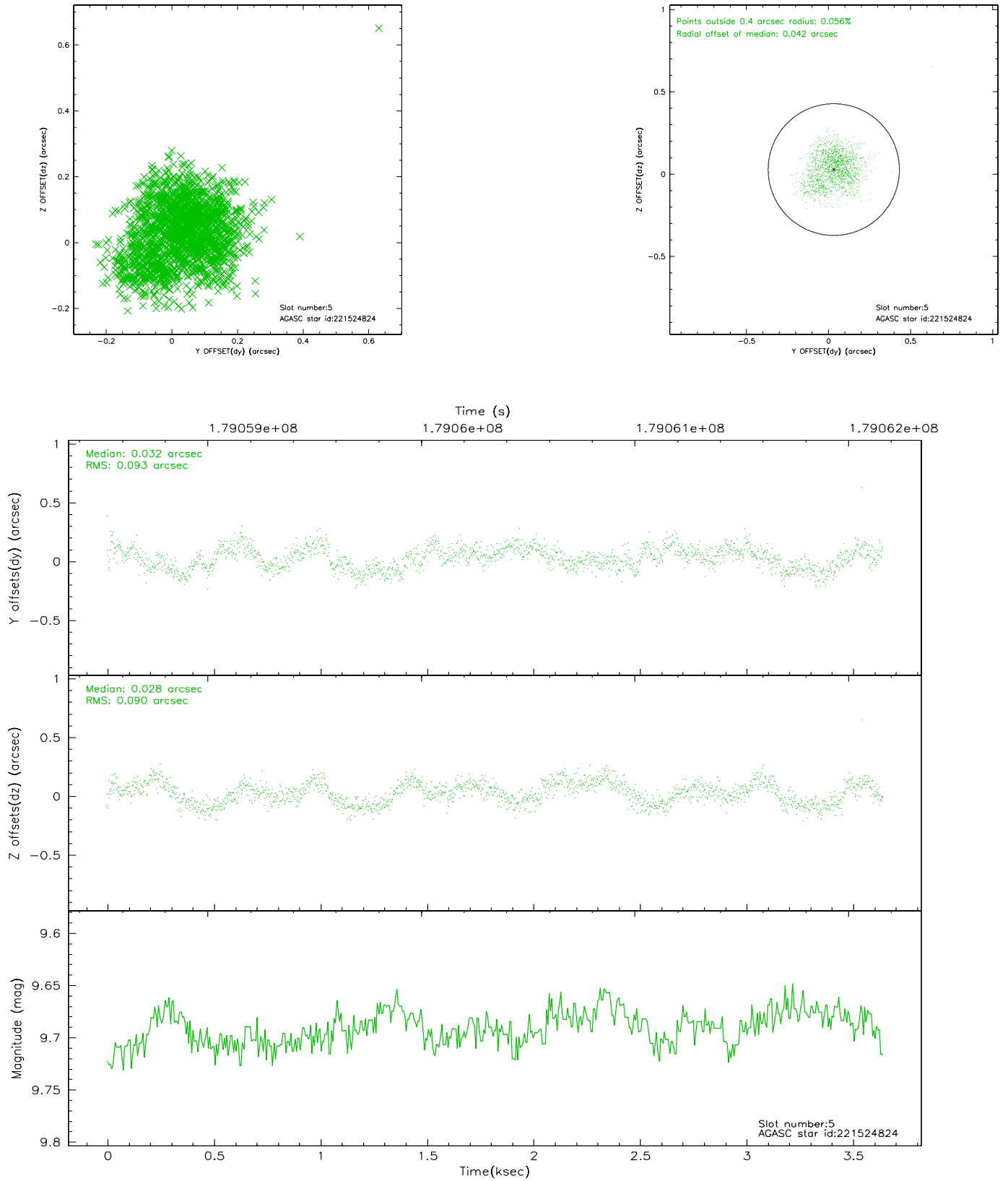
### 2.4.1 Slot 3



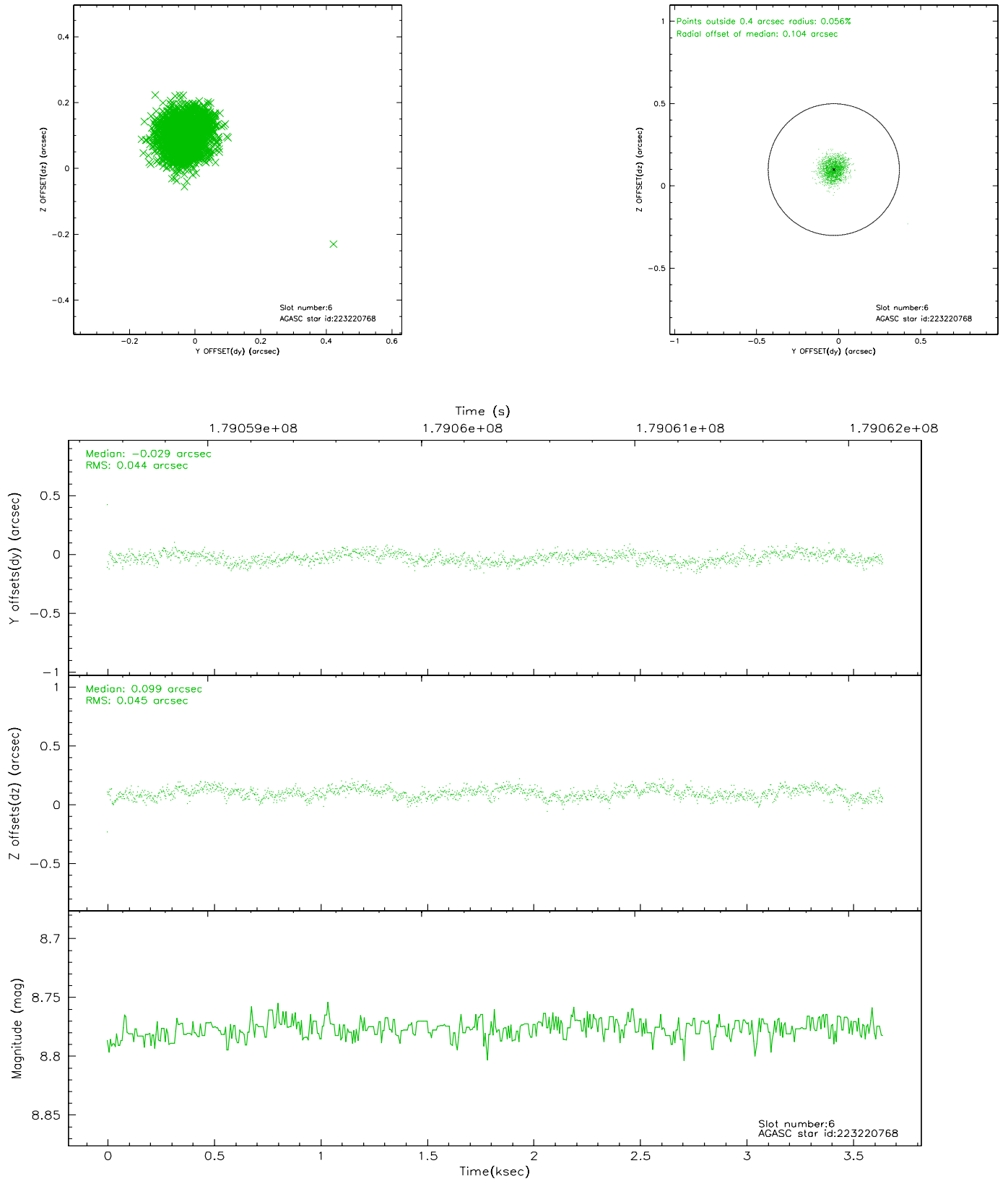
## 2.4.2 Slot 4



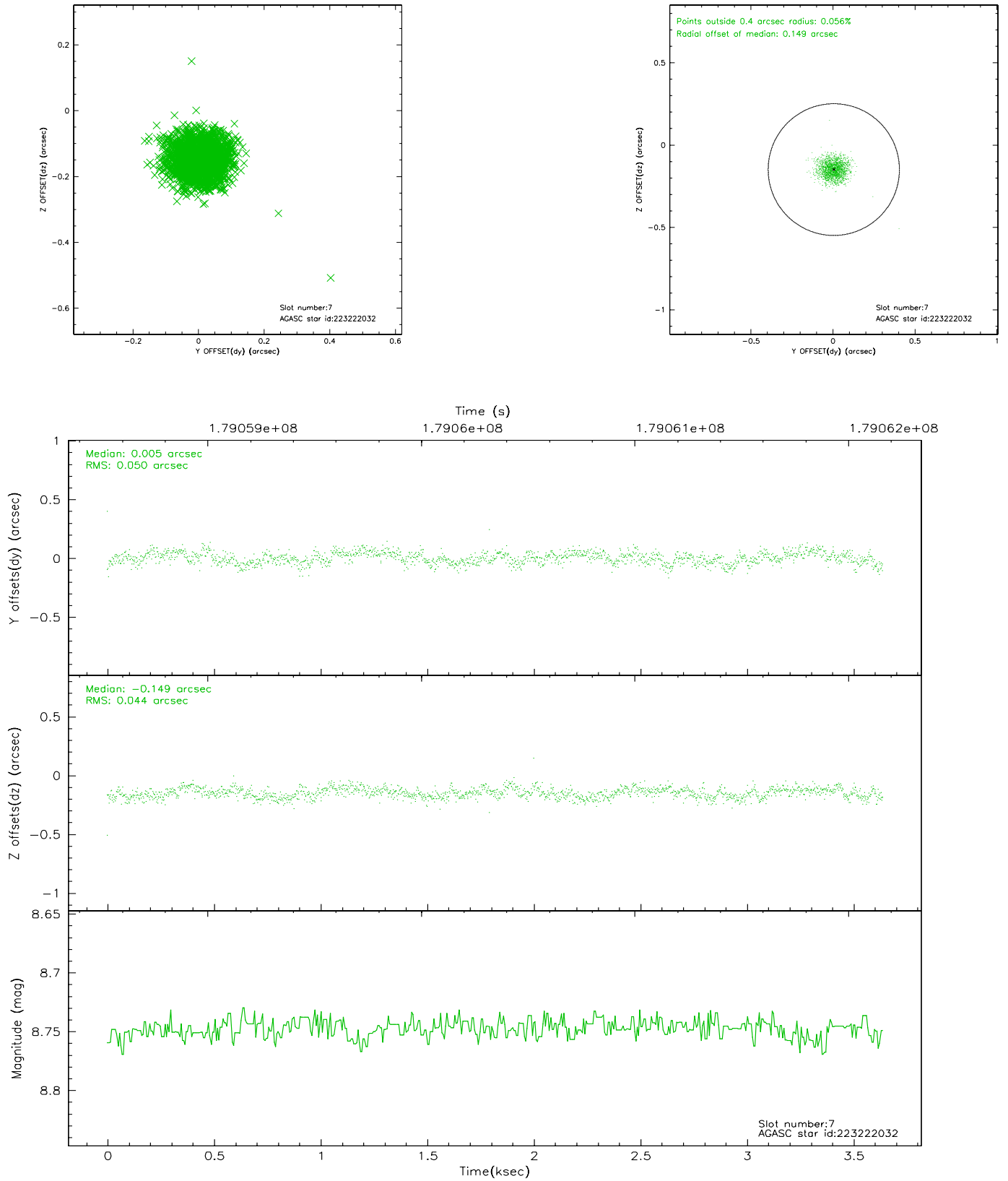
### 2.4.3 Slot 5



## 2.4.4 Slot 6

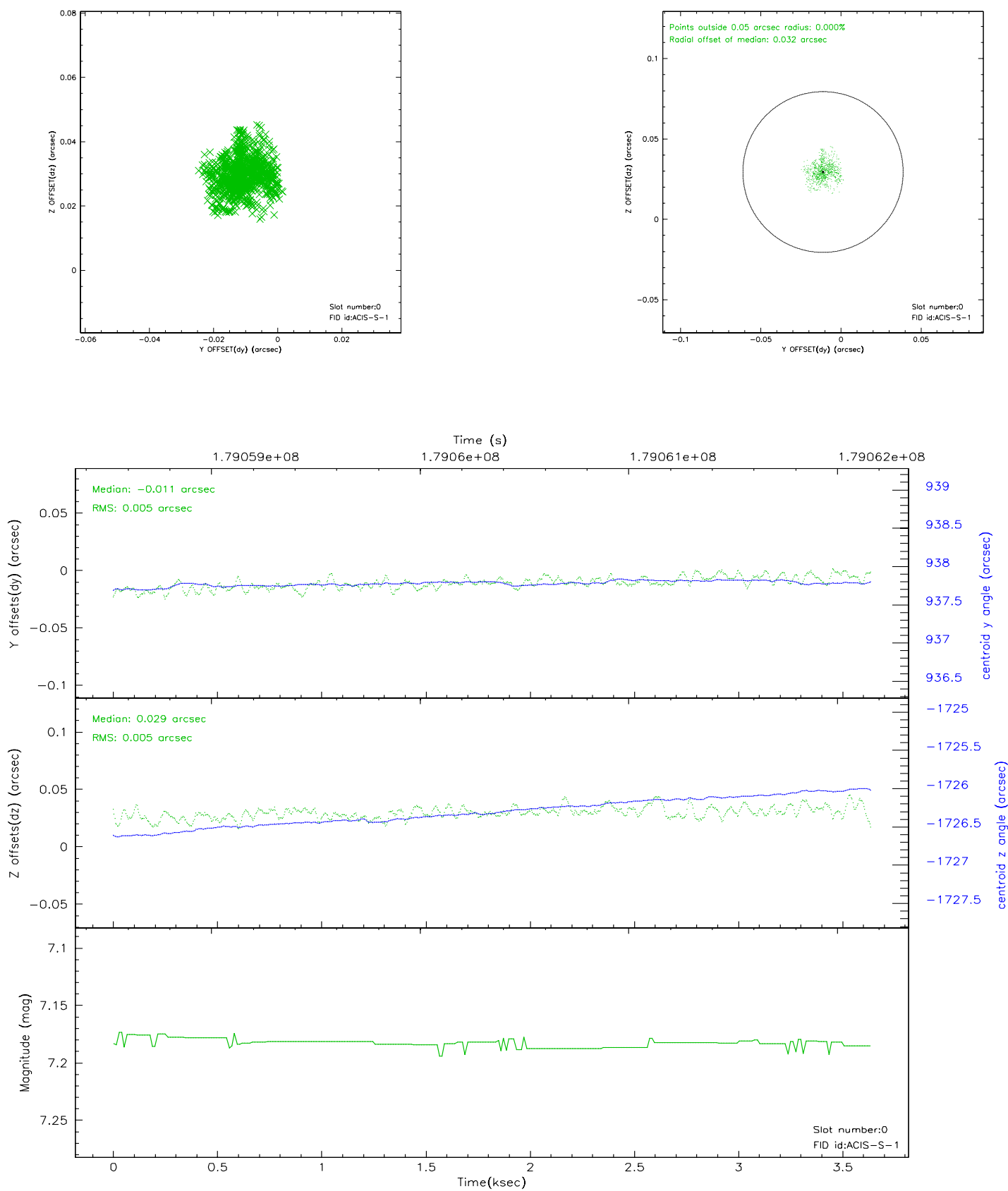


## 2.4.5 Slot 7

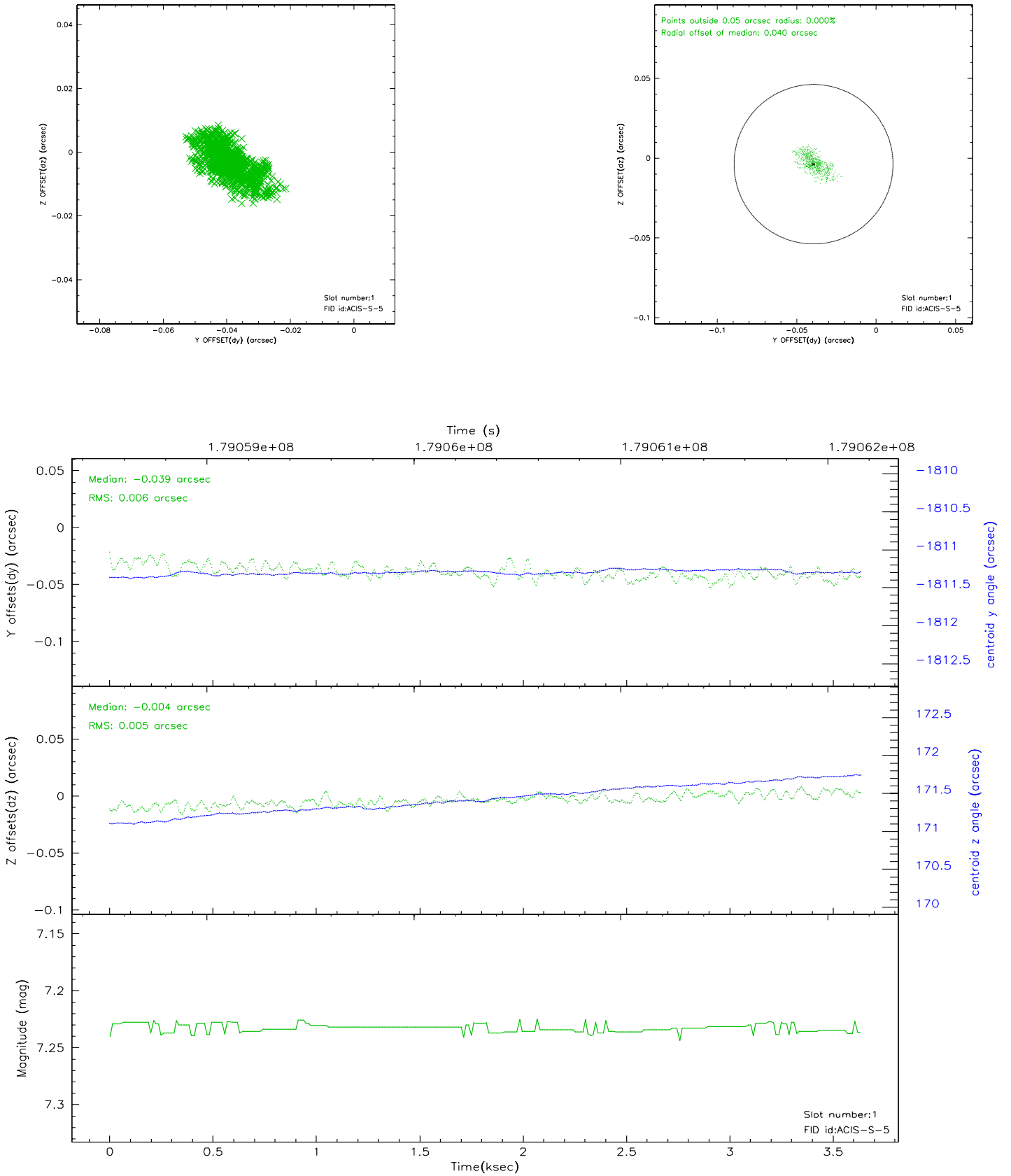


## 2.5 FID Slots

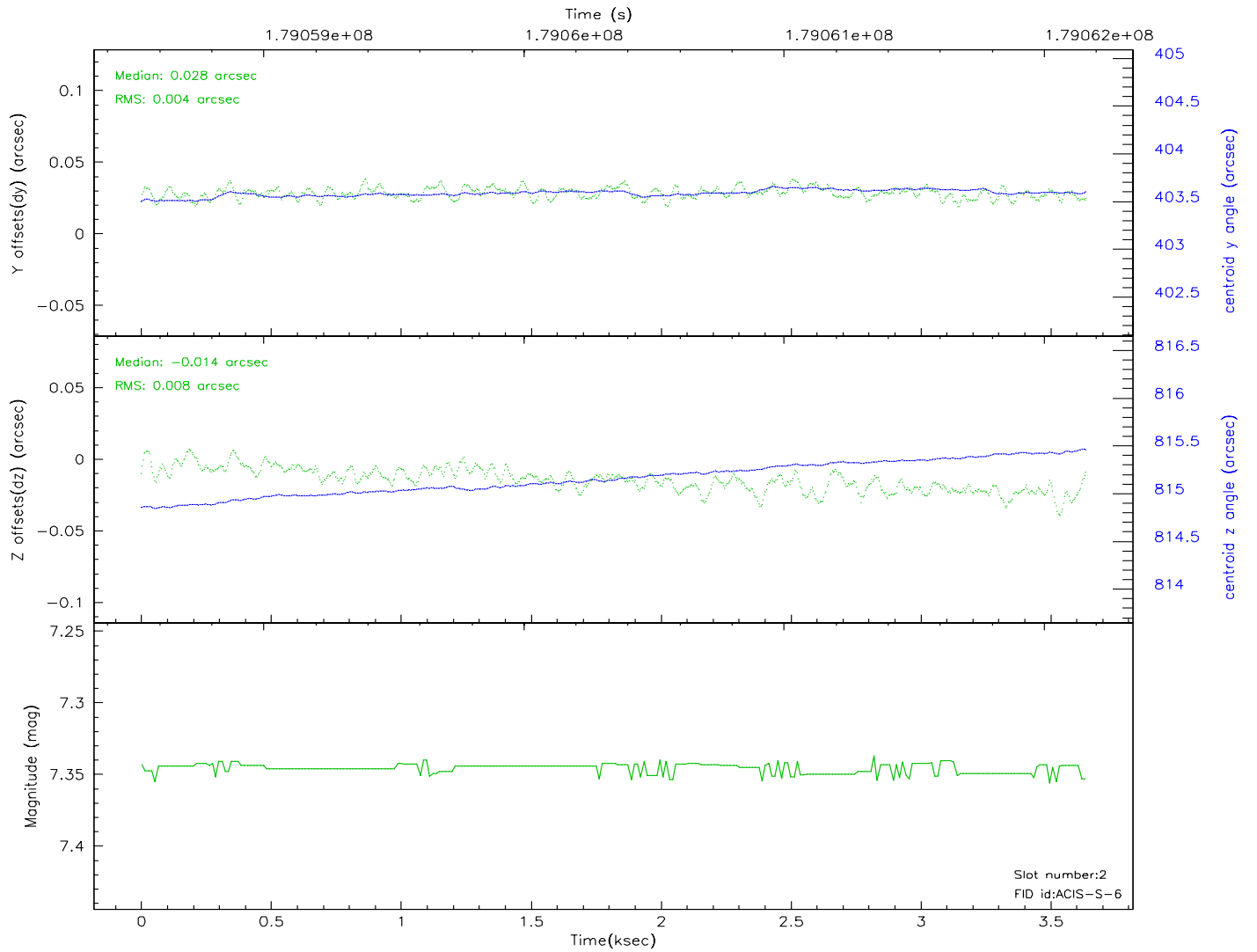
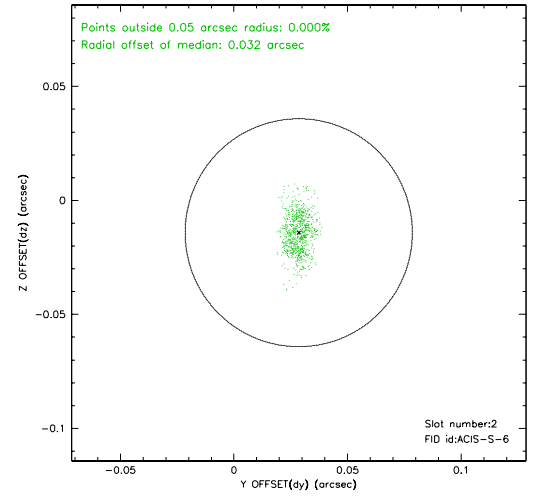
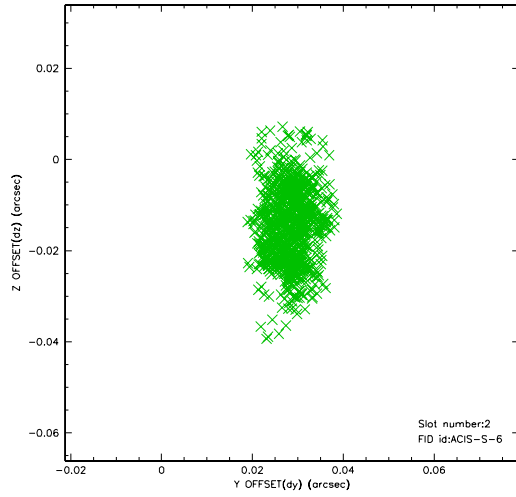
### 2.5.1 Slot 0



## 2.5.2 Slot 1

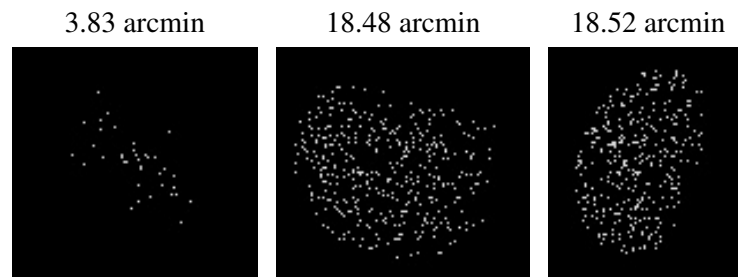


### 2.5.3 Slot 2





### 3 Point Sources



## A Summary

### A.1 Status

V&V Scientist	Jen Lauer
V&V Date (YYYY-MM-DD)	2006.07.06
V&V Edition	1
V&V Disposition and Status	OK
V&V Charge Time	3.635

### A.2 Comments