

# V&V Reference Report

## L2 ASCDS Version : 7.6.8

Observation 3842 - L2 Version 001  
Chandra X-Ray Center

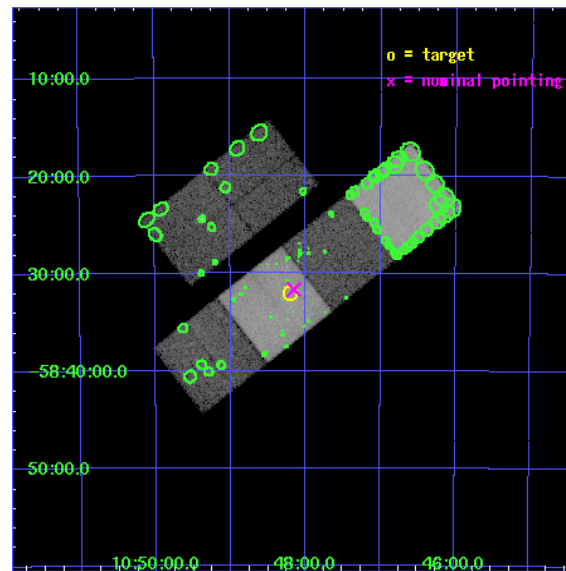
L2 Processing Date : Jul 2 2006

## Contents

<b>1</b>	<b>Front</b>	<b>2</b>
<b>2</b>	<b>OBI</b>	<b>3</b>
2.1	OBI . . . . .	3
2.1.1	Images . . . . .	3
2.1.2	Bias . . . . .	3
2.1.3	Parameters . . . . .	4
2.1.4	Events . . . . .	4
2.2	Compared Parameters . . . . .	5
2.3	Aspect . . . . .	6
2.4	Star Slots . . . . .	9
2.4.1	Slot 3 . . . . .	9
2.4.2	Slot 4 . . . . .	10
2.4.3	Slot 5 . . . . .	11
2.4.4	Slot 6 . . . . .	12
2.5	FID Slots . . . . .	13
2.5.1	Slot 0 . . . . .	13
2.5.2	Slot 1 . . . . .	14
2.5.3	Slot 2 . . . . .	15
<b>3</b>	<b>Point Sources</b>	<b>16</b>
<b>A</b>	<b>Summary</b>	<b>17</b>
A.1	Status . . . . .	17
A.2	Comments . . . . .	17

# 1 Front

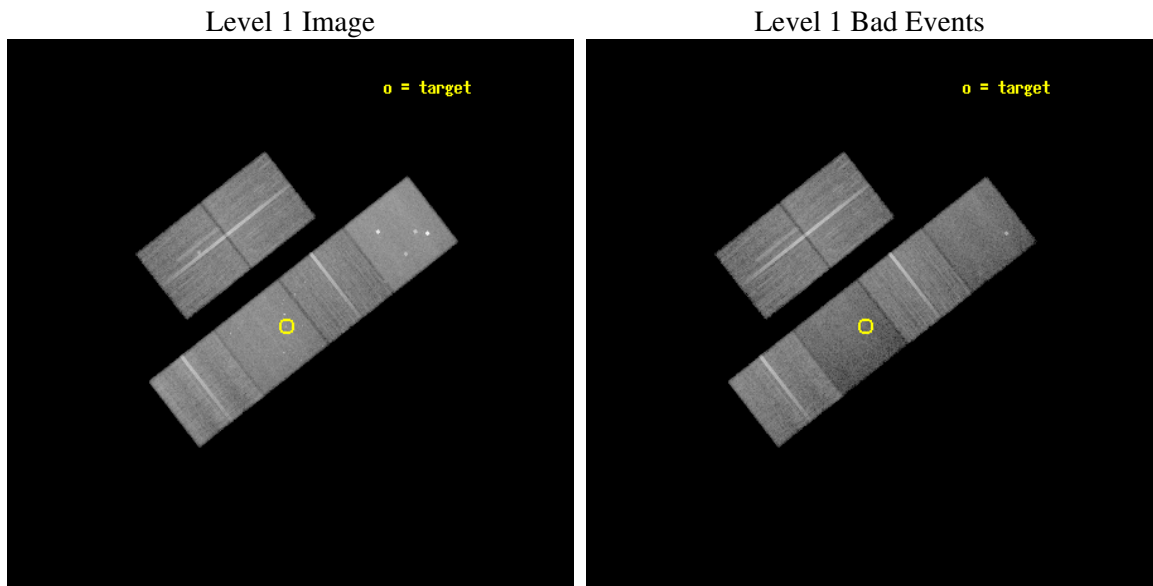
seq_num	500321
obs_id	3842
title	THE X-RAY NEBULA OF PSR B1046-58
observer	Professor Victoria Kaspi
object	PSR B1046-58
dtcycle	0
cycle	P
ra_targ	162.050833
dec_targ	-58.534944
ra_nom	162.03855127628
dec_nom	-58.52774633055
roll_nom	141.88148367894
revision	3
ontime	36611.199863613
livetime	36147.606806322
ontime2	36607.958903342
ontime3	36604.717943043
ontime5	36611.199863613
ontime6	36611.199863613
ontime7	36611.199863613
ontime8	36611.199863613
l2events	327428



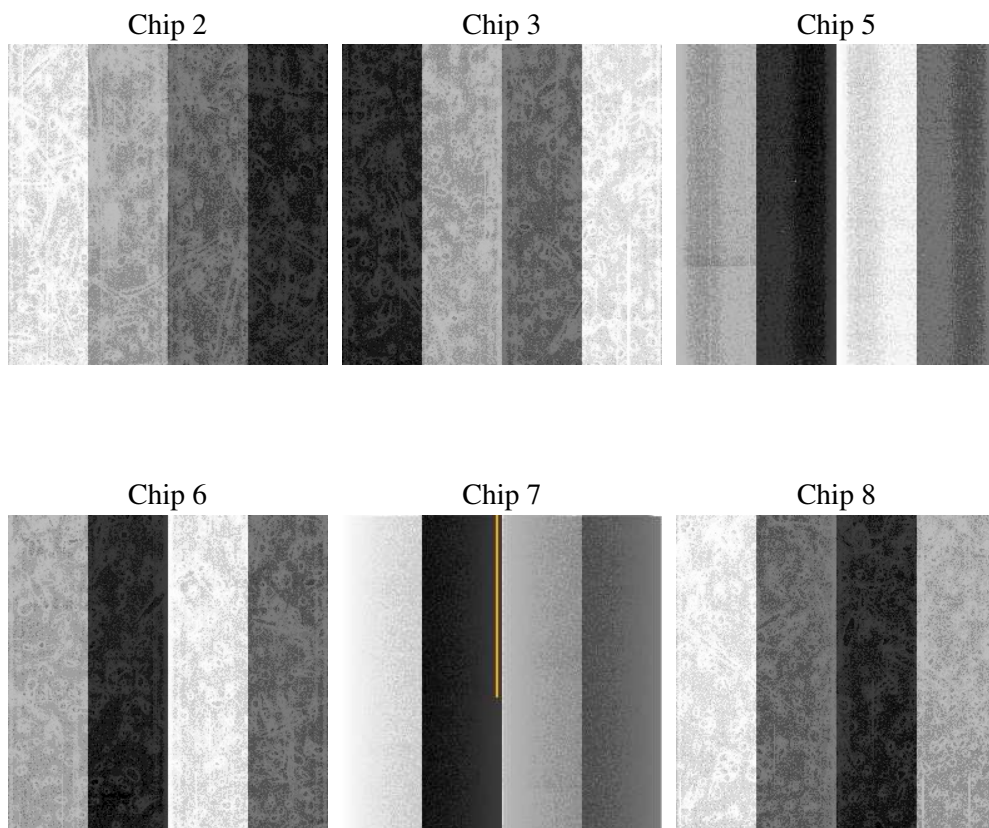
## 2 OBI

### 2.1 OBI

#### 2.1.1 Images



#### 2.1.2 Bias



### 2.1.3 Parameters

obi_num	0
ascdsver	7.6.8
caldsver	3.2.2
date	2006-07-02T06:20:23
revision	3

sched_exp_time	36485.158000
ontime	36811.277122706
ontime2	36808.036162436
ontime3	36804.795172215
ontime5	36811.277122706
ontime6	36811.277092785
ontime7	36811.277122706
ontime8	36811.277122706
l1events	1263062

### 2.1.4 Events

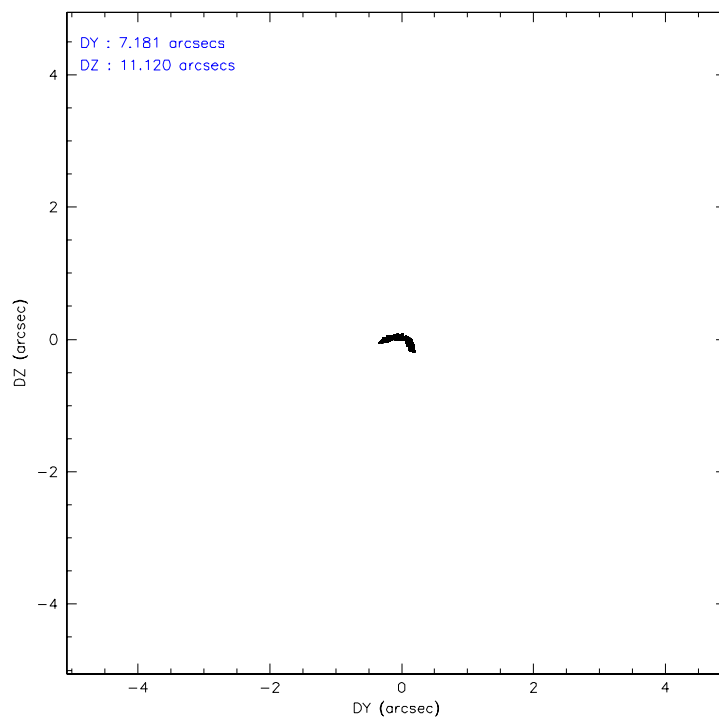
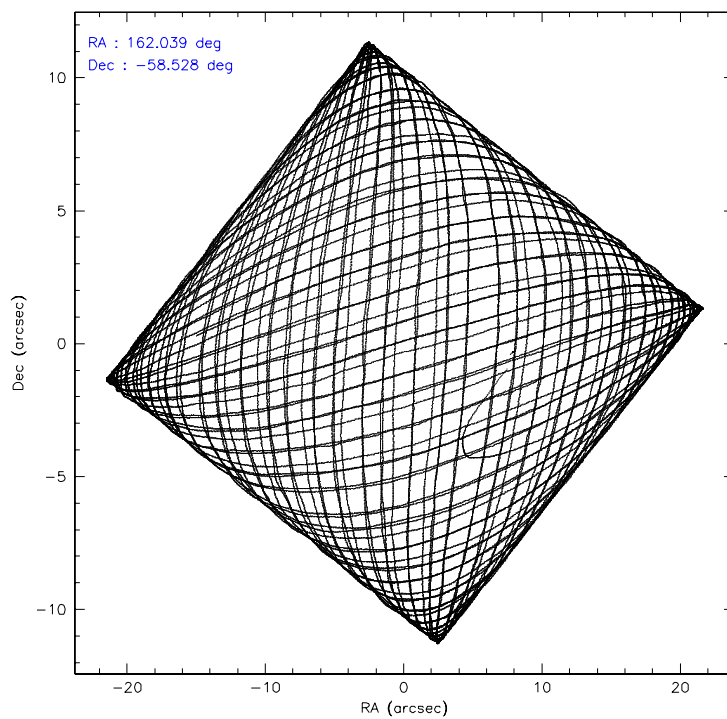
	ccd 2	ccd 3	ccd 5	ccd 6	ccd 7	ccd 8
level 1 events	195759	180077	266645	187993	208219	224369
rejected events	175365	159694	112856	164224	94497	171540
rejected %	89%	88%	42%	87%	45%	76%

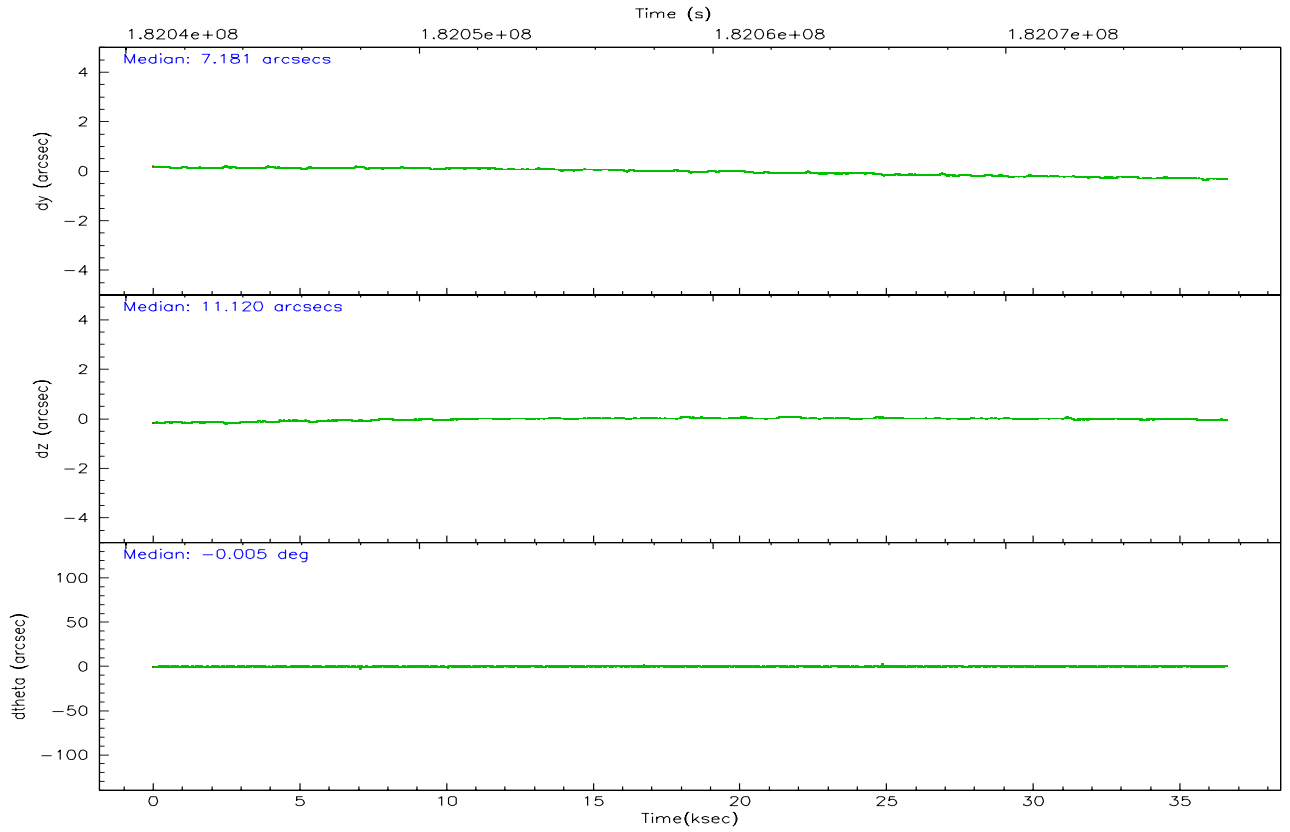
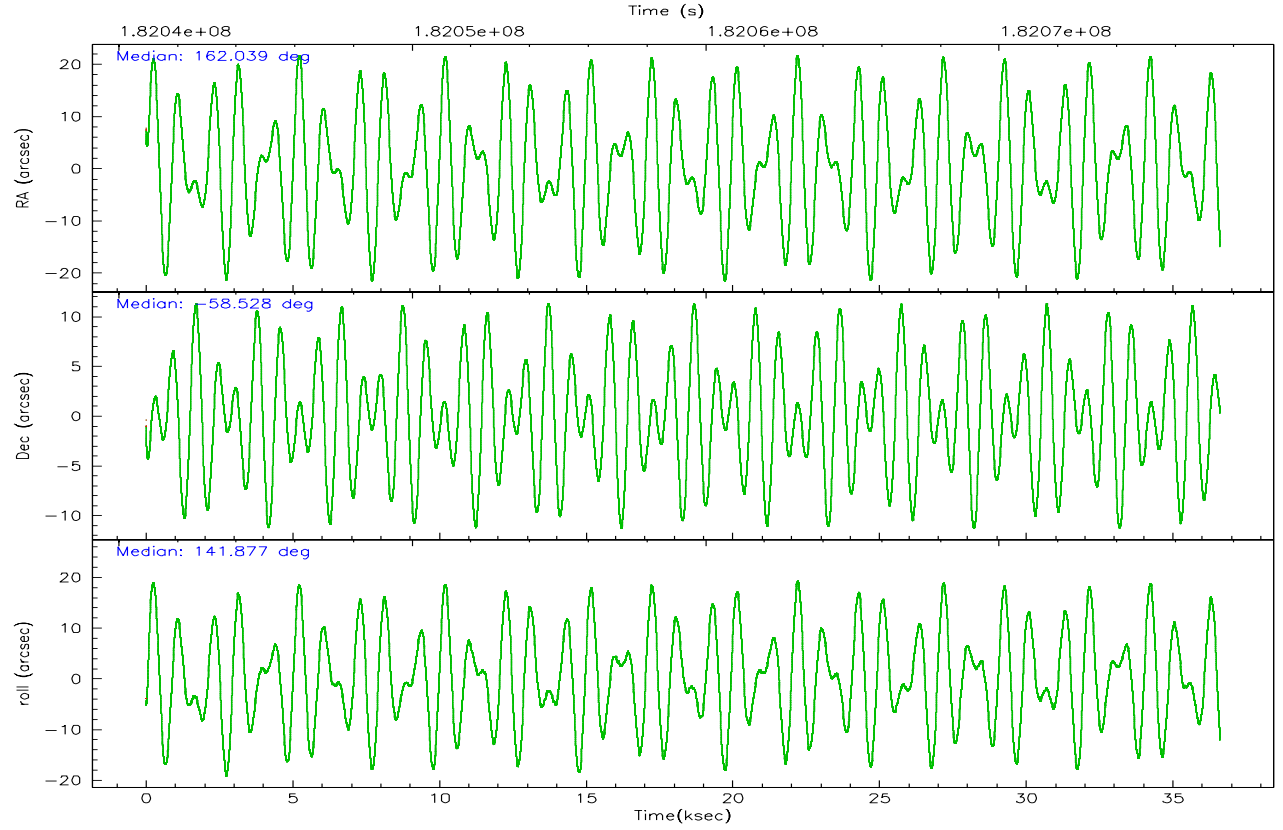
	ccd 2	ccd 3	ccd 5	ccd 6	ccd 7	ccd 8
grade 0 events	8933	9180	21843	11174	9895	17394
	4%	5%	8%	5%	4%	7%
grade 1 events	123	125	937	87	98	159
	0%	0%	0%	0%	0%	0%
grade 2 events	4397	3758	47838	4503	27823	11201
	2%	2%	17%	2%	13%	4%
grade 3 events	2044	2116	4884	2129	7757	5896
	1%	1%	1%	1%	3%	2%
grade 4 events	2027	2053	4814	2235	7349	5662
	1%	1%	1%	1%	3%	2%
grade 5 events	5192	5914	12830	6133	14138	8984
	2%	3%	4%	3%	6%	4%
grade 6 events	3104	3350	75134	3858	61333	13038
	1%	1%	28%	2%	29%	5%
grade 7 events	169939	153581	98365	157874	79826	162035
	86%	85%	36%	83%	38%	72%

## 2.2 Compared Parameters

Parameter	Planned	Actual	Parameter	Planned	Actual
Instrument	ACIS	ACIS	Obspar format version number	6	6
Detector	ACIS-235678	ACIS-235678	Obspar file type	PREDICTED	ACTUAL
Grating	NONE	NONE	Obspar update status	NONE	UPDATED
Data mode	VFAINT	VFAINT	On-chip summing requested	N	N
Observation mode	POINTING	POINTING	Subarray requested	NONE	NONE
Pointing RA	162.090227	162.0385512762818	Alternating exposures requested	N	N
Pointing Dec	-58.531203	-58.5277463305504	Primary exposure time	0.000000	3.2
Pointing Roll	141.768939	141.8814836789433			
SIM focus pos (mm)	-0.684267	-0.6828225247311905			
SIM defocus (mm)	0	0.001444936568705701			
SIM translation stage pos (mm)	-190.132523	-190.1400660498719			
SIM translation stage offset (mm)	0	0.00754346686406393			
Observation start time	182041054.184000	182039914.07111			
Observation start date	2003-10-08T22:56:30	2003-10-08T22:38:34			
Observation end time	182077539.184000	182077853.93524			
Observation end date	2003-10-09T09:04:35	2003-10-09T09:10:53			
Read mode	TIMED	TIMED			

## 2.3 Aspect





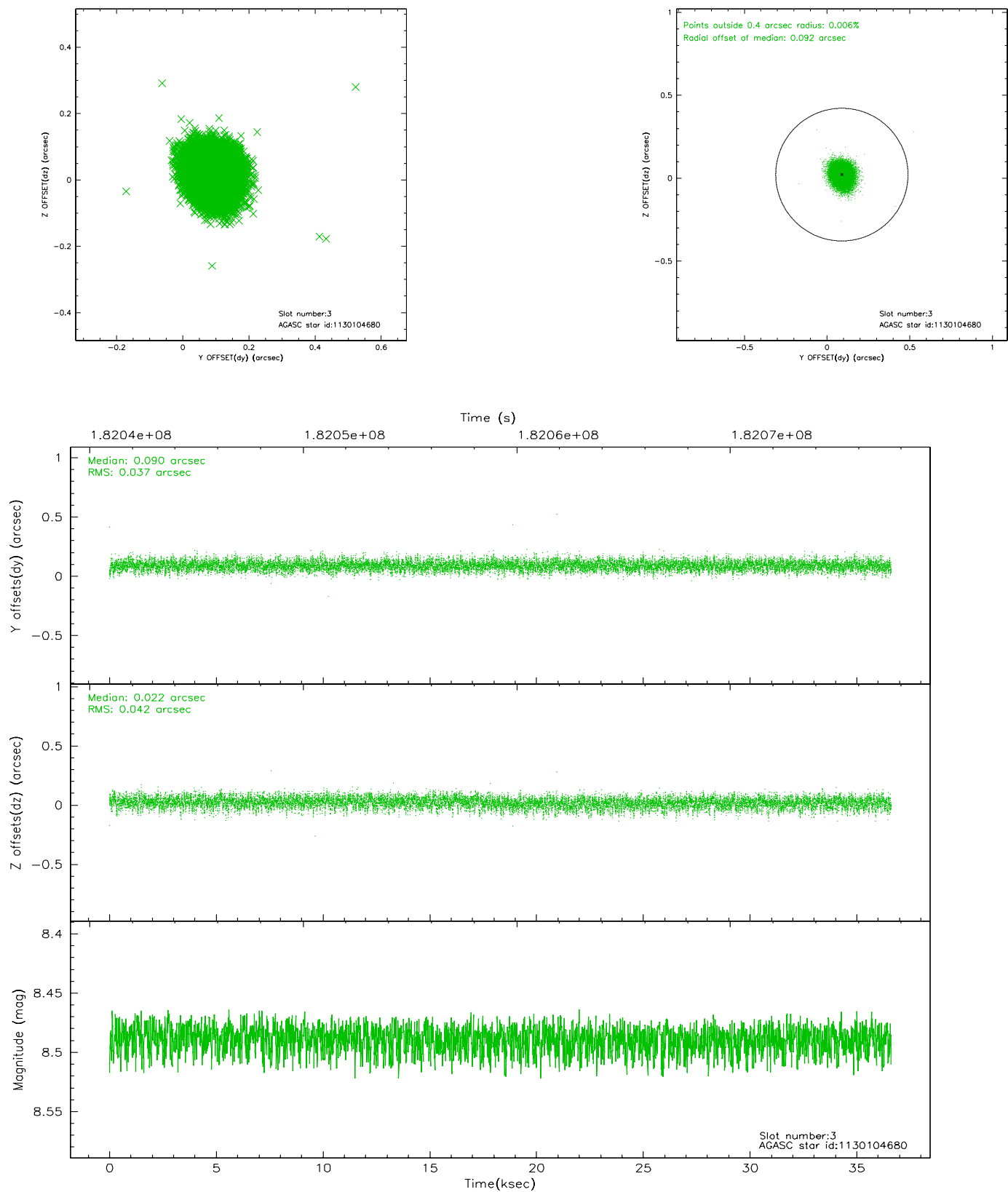
### Slot Statistics

slot	status	id	mag	n_pts	med_dy	med_dz	dr1	dr2	ra	dec	mean_y	mean_z
0	FID	ACIS-S-2	7.10	8932	-0.026	0.017	0.013	0.018	0.000000	0.000000	-759.91	-1732.37
1	FID	ACIS-S-4	7.20	8932	0.015	0.008	0.014	0.021	0.000000	0.000000	2153.37	176.11
2	FID	ACIS-S-5	7.23	8931	-0.017	-0.017	0.009	0.015	0.000000	0.000000	-1812.73	169.74
3	GUIDE	1130104680	8.49	17861	0.090	0.022	0.059	0.096	162.297370	-57.969531	940.82	-1832.35
4	GUIDE	1130105400	7.30	17863	-0.169	0.076	0.054	0.086	161.912555	-57.924095	1619.41	-1506.01
5	GUIDE	1130630792	8.82	17853	0.090	-0.011	0.066	0.108	160.614173	-58.659021	1867.72	2095.86
6	GUIDE	1130630072	9.23	17854	-0.006	-0.086	0.071	0.117	162.745342	-58.921698	-1829.44	355.66
7	OMITTED		0.00	0	0.000	0.000	0.000	0.000	0.000000	0.000000	0.00	0.00

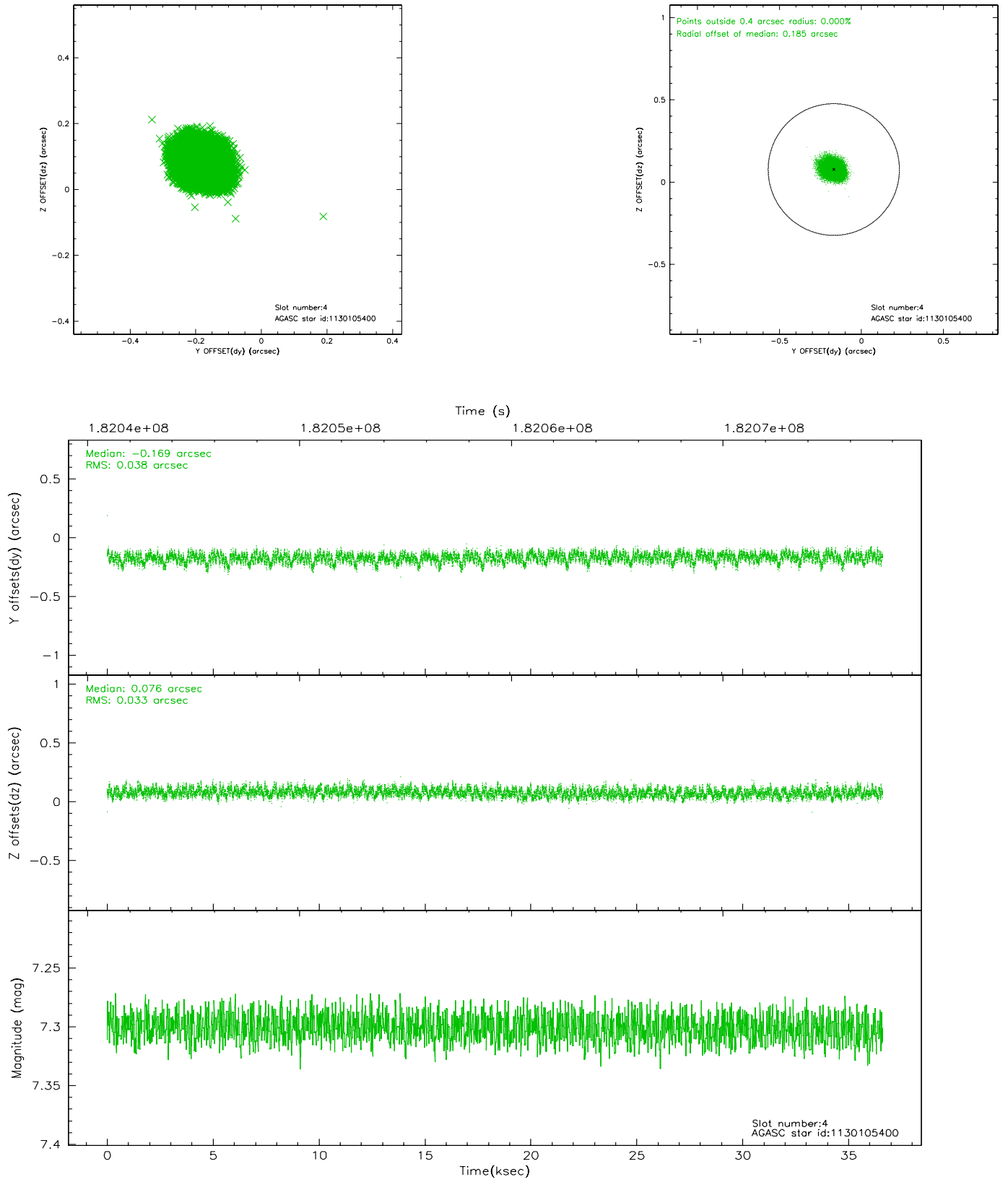


## 2.4 Star Slots

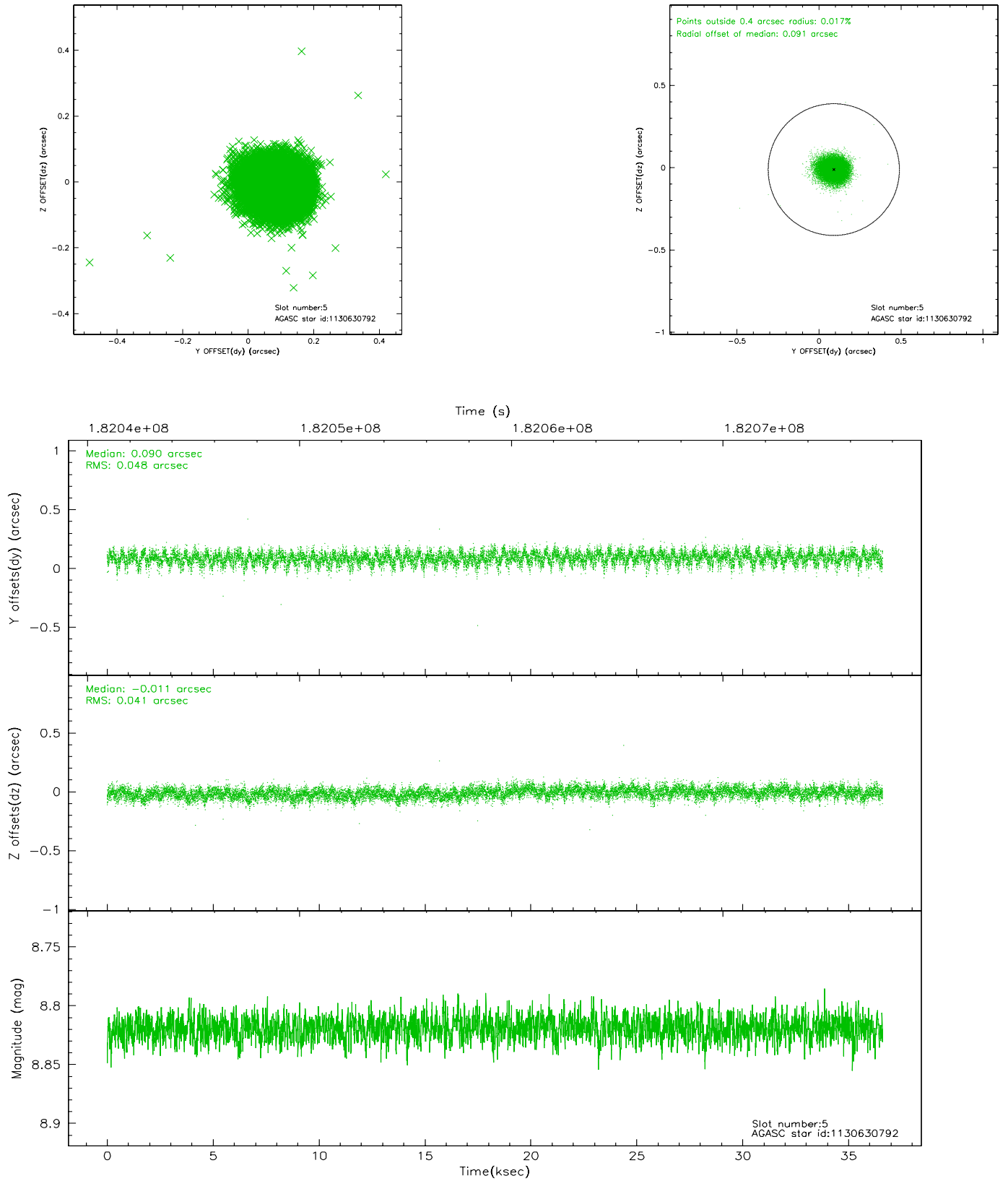
### 2.4.1 Slot 3



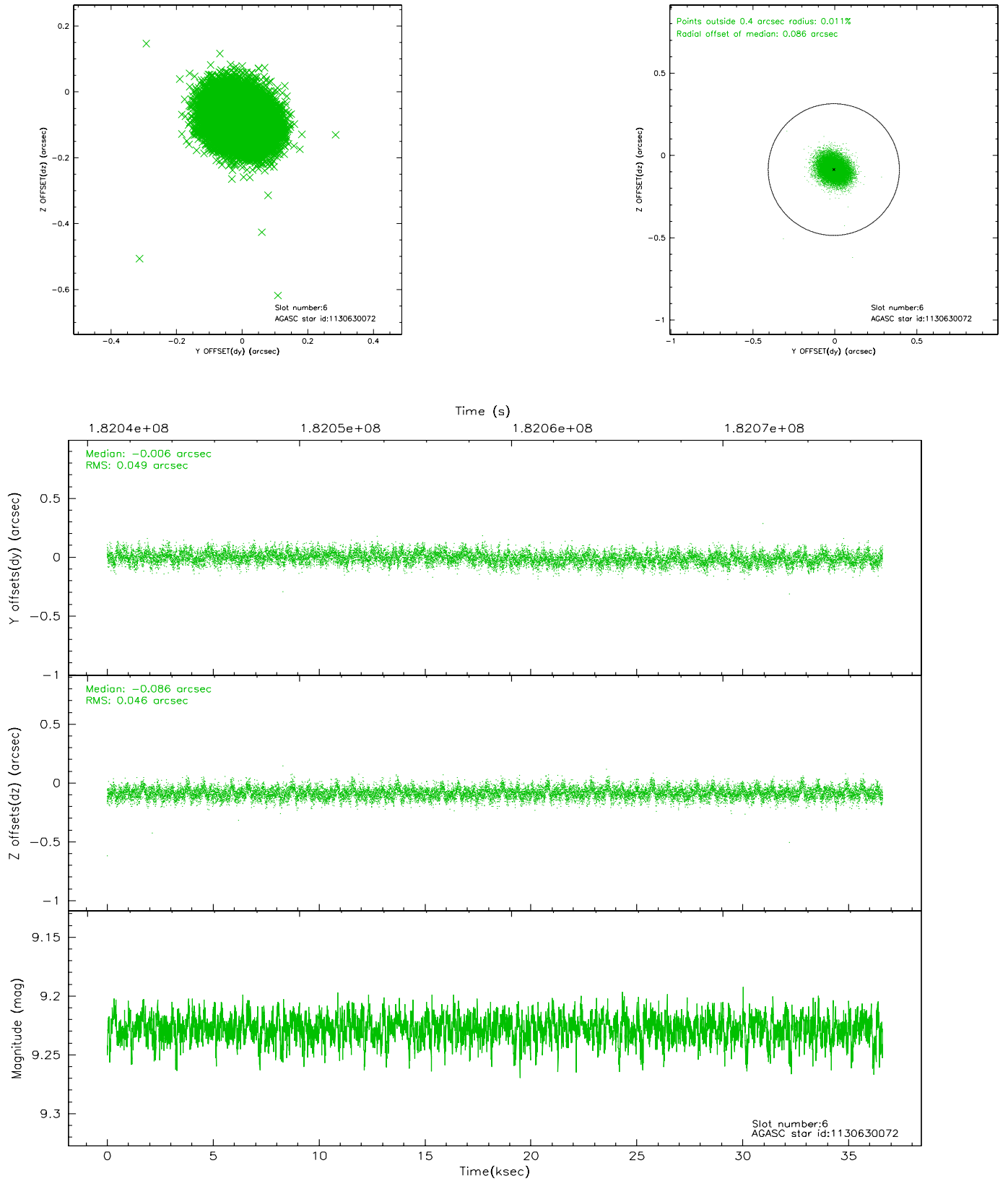
## 2.4.2 Slot 4



### 2.4.3 Slot 5

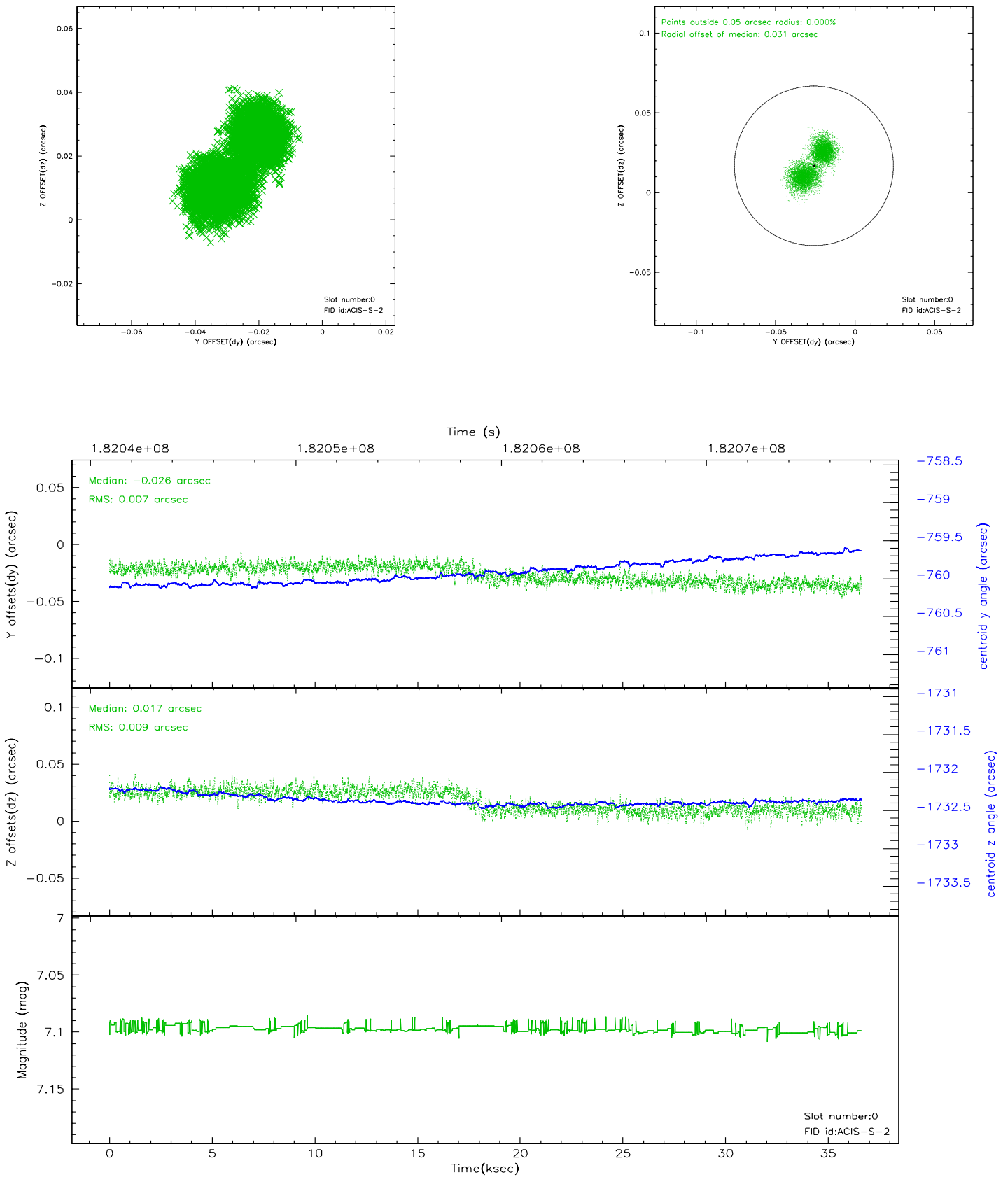


## 2.4.4 Slot 6

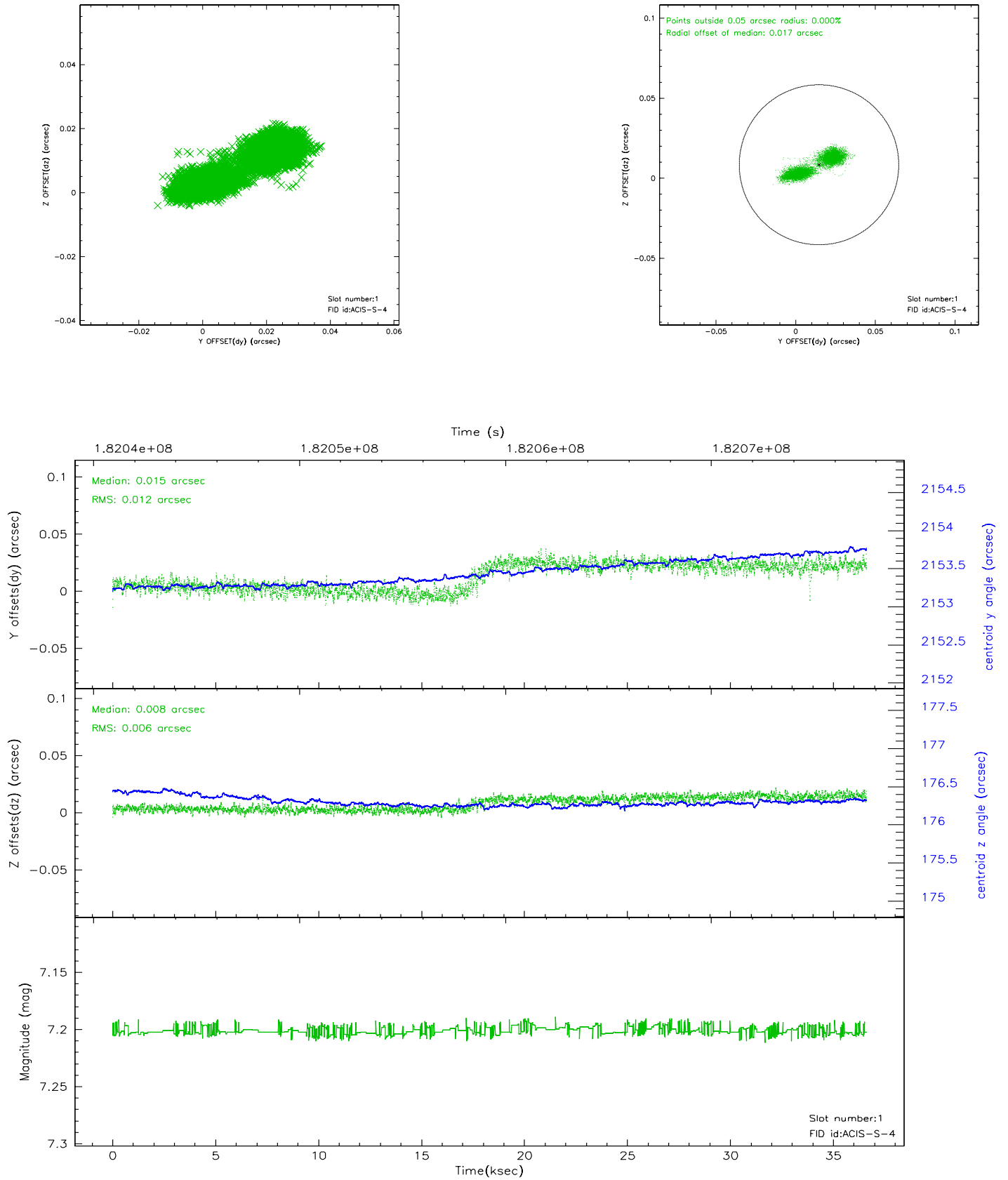


## 2.5 FID Slots

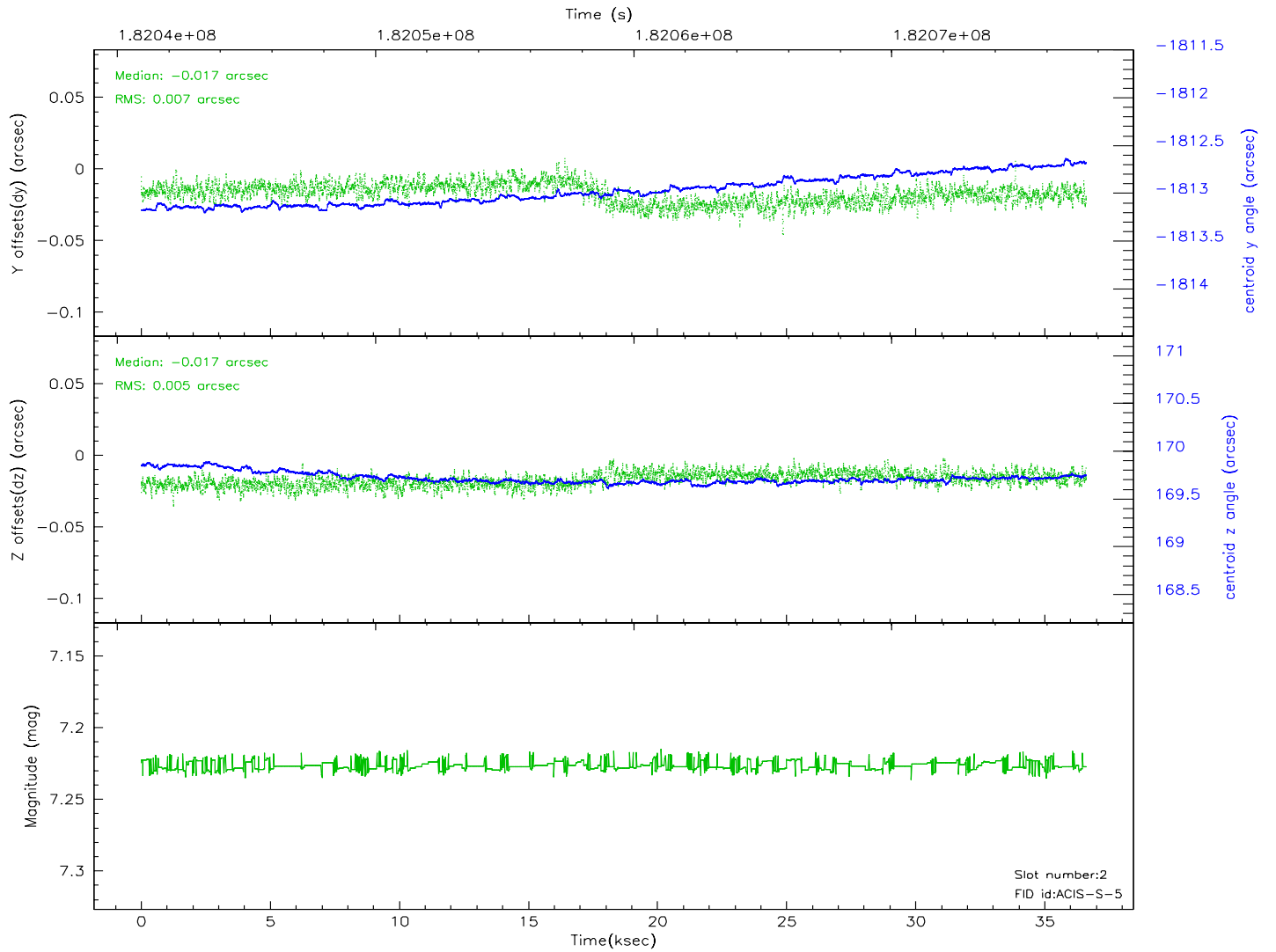
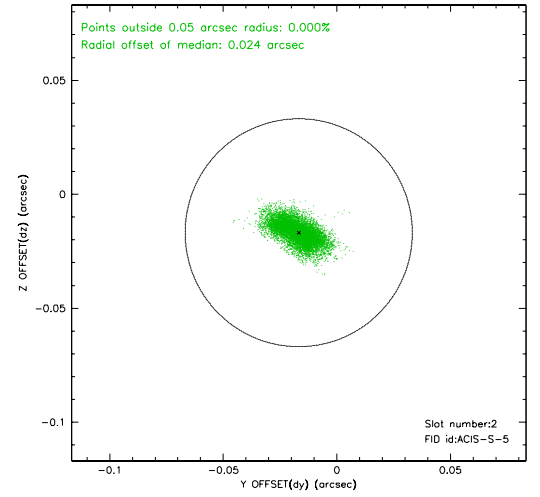
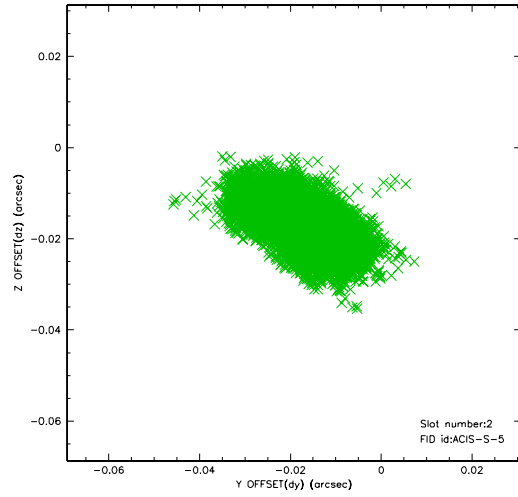
### 2.5.1 Slot 0



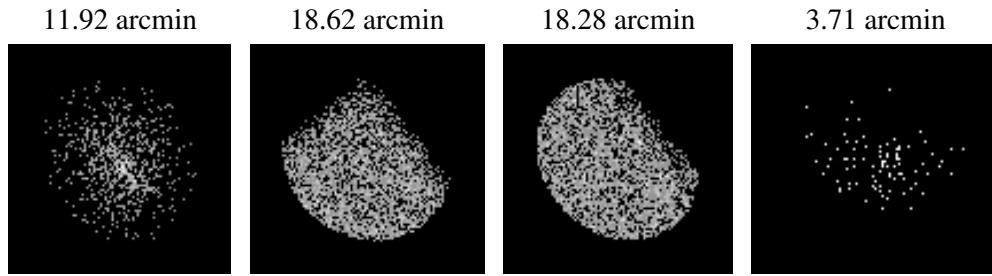
## 2.5.2 Slot 1



### 2.5.3 Slot 2



### 3 Point Sources





# A Summary

## A.1 Status

V&V Scientist	Beth Sundheim
V&V Date (YYYY-MM-DD)	2010.10.01
V&V Edition	2
V&V Disposition and Status	OK
V&V Charge Time	36.611

## A.2 Comments

The guide star in slot 7 was manually excluded from the processing due to poor data quality.