

V&V Reference Report

L2 ASCDS Version : 8.4.5

Observation 3812 - L2 Version 4
Chandra X-Ray Center

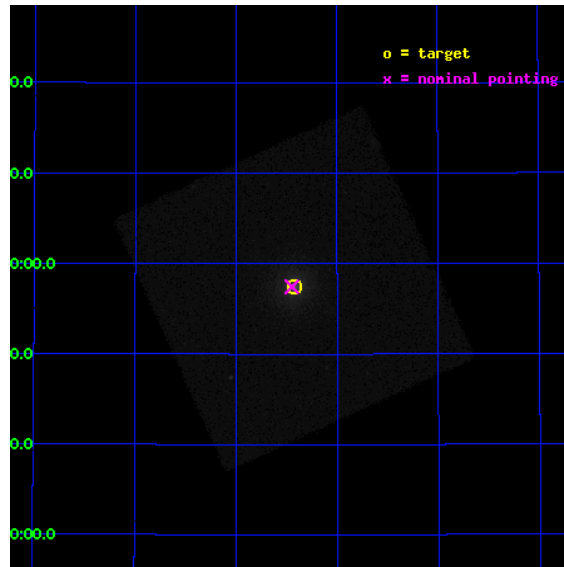
L2 Processing Date : Oct 22 2012

Contents

1	Front	2
2	OBI	3
2.1	OBI	3
2.1.1	Images	3
2.1.2	Parameters	4
2.1.3	Events	4
2.2	Compared Parameters	5
2.3	Aspect	6
2.4	Star Slots	9
2.4.1	Slot 3	9
2.4.2	Slot 4	10
2.4.3	Slot 5	11
2.4.4	Slot 6	12
2.4.5	Slot 7	13
2.5	FID Slots	14
2.5.1	Slot 0	14
2.5.2	Slot 1	15
2.5.3	Slot 2	16
A	Summary	17
A.1	Status	17
A.2	Comments	17

1 Front

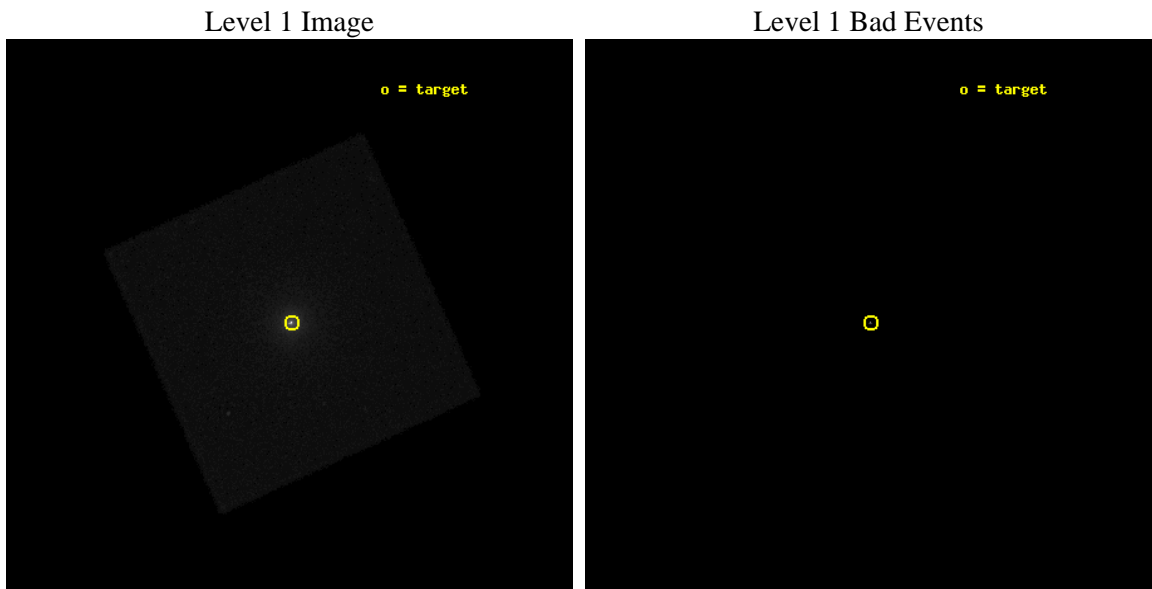
seq_num	400299	Sequence number
obs_id	3812	Observation id
title	UNDERSTANDING THE EXTENDED EMISSION IN CYGNUS X-3	Proposal title
observer	Dr. William Heindl	Principal investigator
object	CYG X-3	Source name
ra_targ	308.10625	Observer's specified target RA [deg]
dec_targ	40.957694	Observer's specified target Dec [deg]
ra_nom	308.11179164321	Nominal RA [deg]
dec_nom	40.957561725456	Nominal Dec [deg]
roll_nom	20.639481561023	Nominal Roll [deg]
revision	4	Processing version of data
ontime	14782.550620884	[s]
livetime	14688.074700979	Ontime multiplied by DTCOR
l2events	603562	Number of level 2 events



2 OBI

2.1 OBI

2.1.1 Images



2.1.2 Parameters

obi_num	0	Obi number	sched_exp_time	14800.000000	[s] Scheduled observation exposure time
ascdsver	8.4.5	Processing system revision	ontime	14782.550620884	[s]
caldbver	4.5.2	 	l1events	831539	Number of level 1 events
date	2012-10-22T08:13:23	Date and time of file creation			
revision	4	Processing version of data			

2.1.3 Events

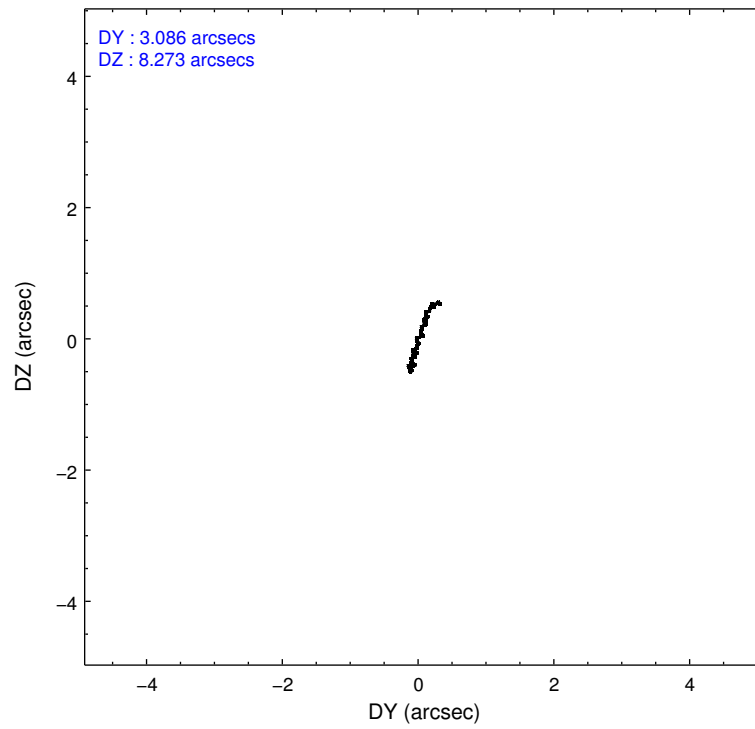
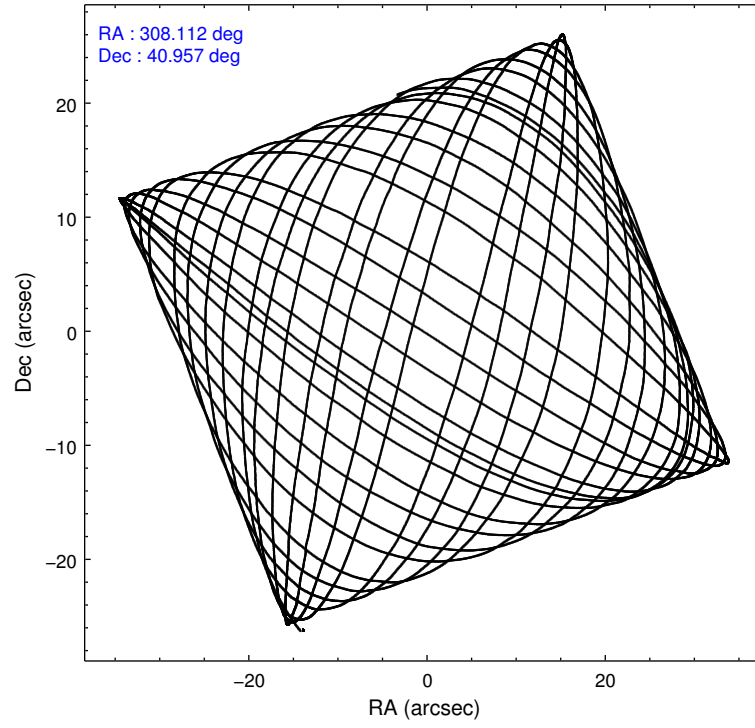
Level 1 Events

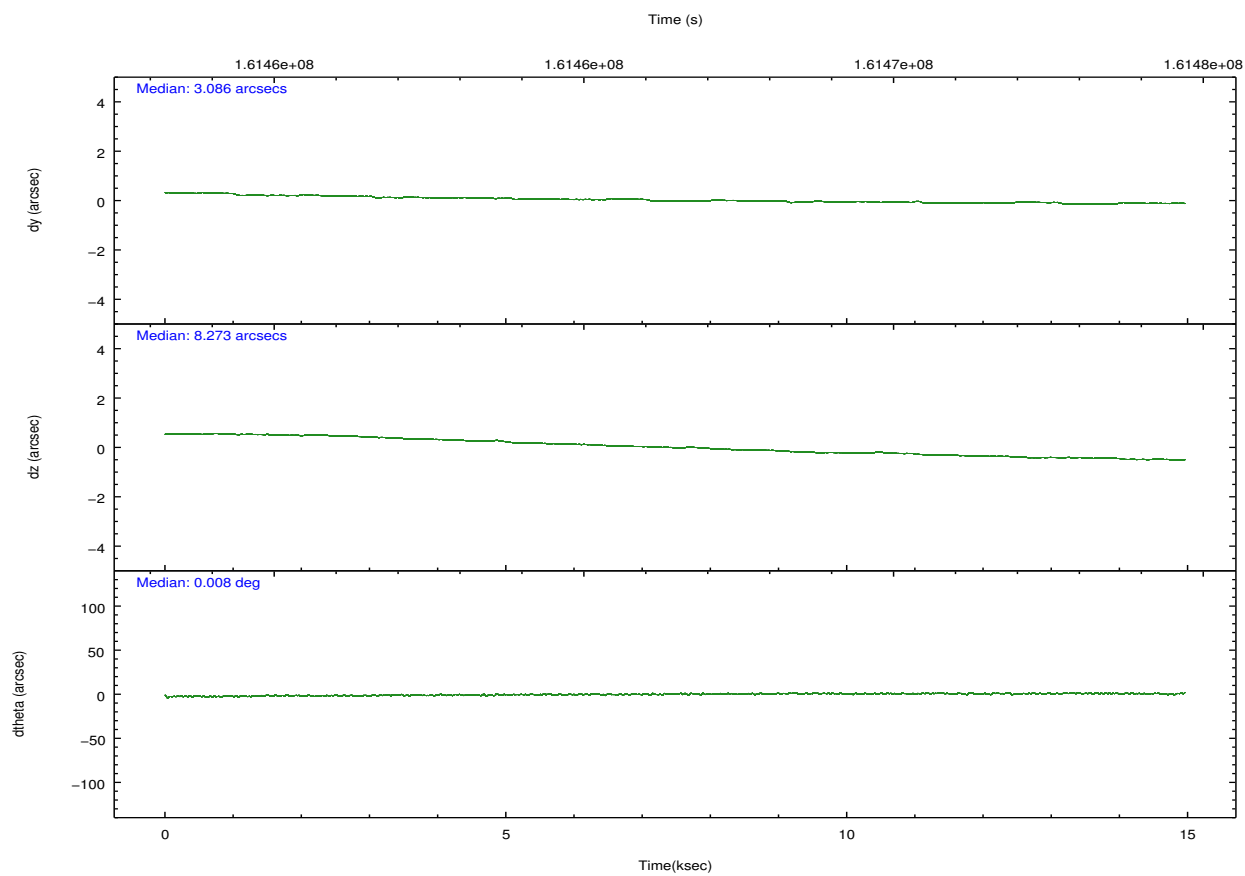
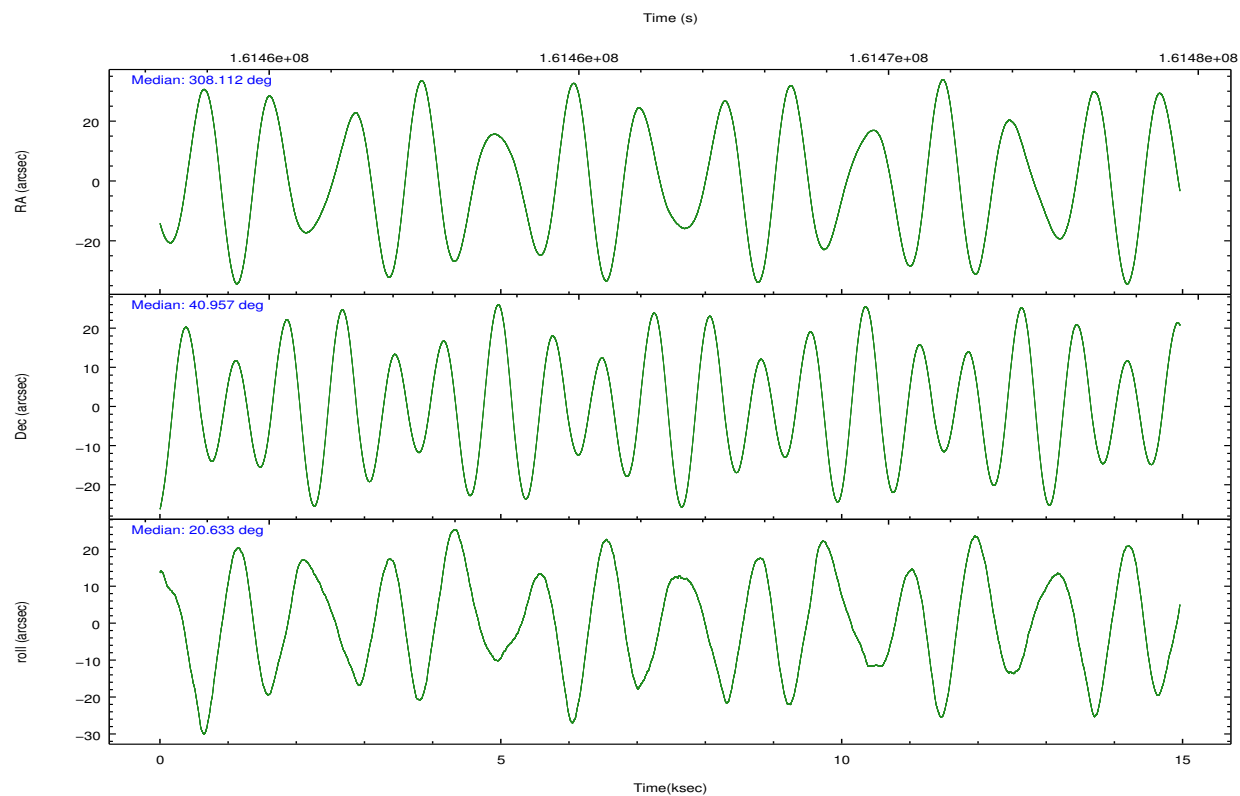
	segment 0
level 1 events	831539
rejected events	5904
rejected %	0%

2.2 Compared Parameters

Parameter	Planned	Actual	Parameter	Planned	Actual
Instrument	HRC	HRC	Obspar format version number	7	7
Detector	HRC-I	HRC-I	Obspar file type	PREDICTED	ACTUAL
Grating	NONE	NONE	Obspar update status	NONE	UPDATED
Data mode	OBSERVING	OBSERVING			
Observation mode	POINTING	POINTING			
[deg] Pointing RA	308.089663	308.1117916432118			
[deg] Pointing Dec	40.936193	40.95756172545612			
[deg] Pointing Roll	20.749484	20.63948156102254			
[mm] SIM focus pos	-1.040293	-1.038866356238299			
[mm] SIM defocus	0	0.001426264420575141			
[mm] SIM translation stage pos	126.985494	126.9804656746847			
[mm] SIM translation stage offset	0	0.005023216916882234			
[s] Observation start time (MET)	161459153.184000	161458636.33447			
Observation start date	2003-02-12T17:44:49	2003-02-12T17:37:16			
[s] Observation end time (MET)	161473953.184000	161474857.47265			
Observation end date	2003-02-12T21:51:29	2003-02-12T22:07:37			

2.3 Aspect



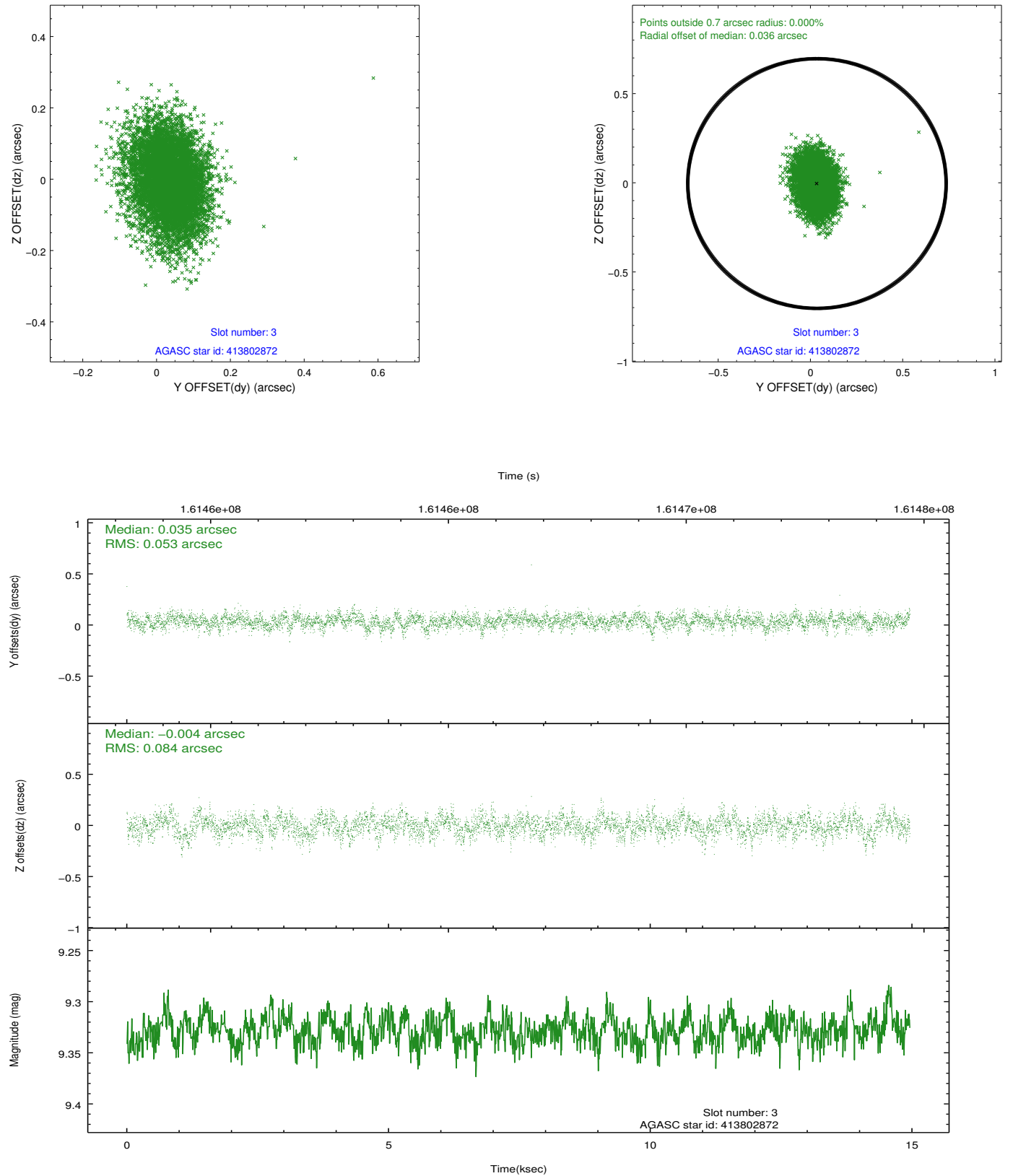


Slot Statistics

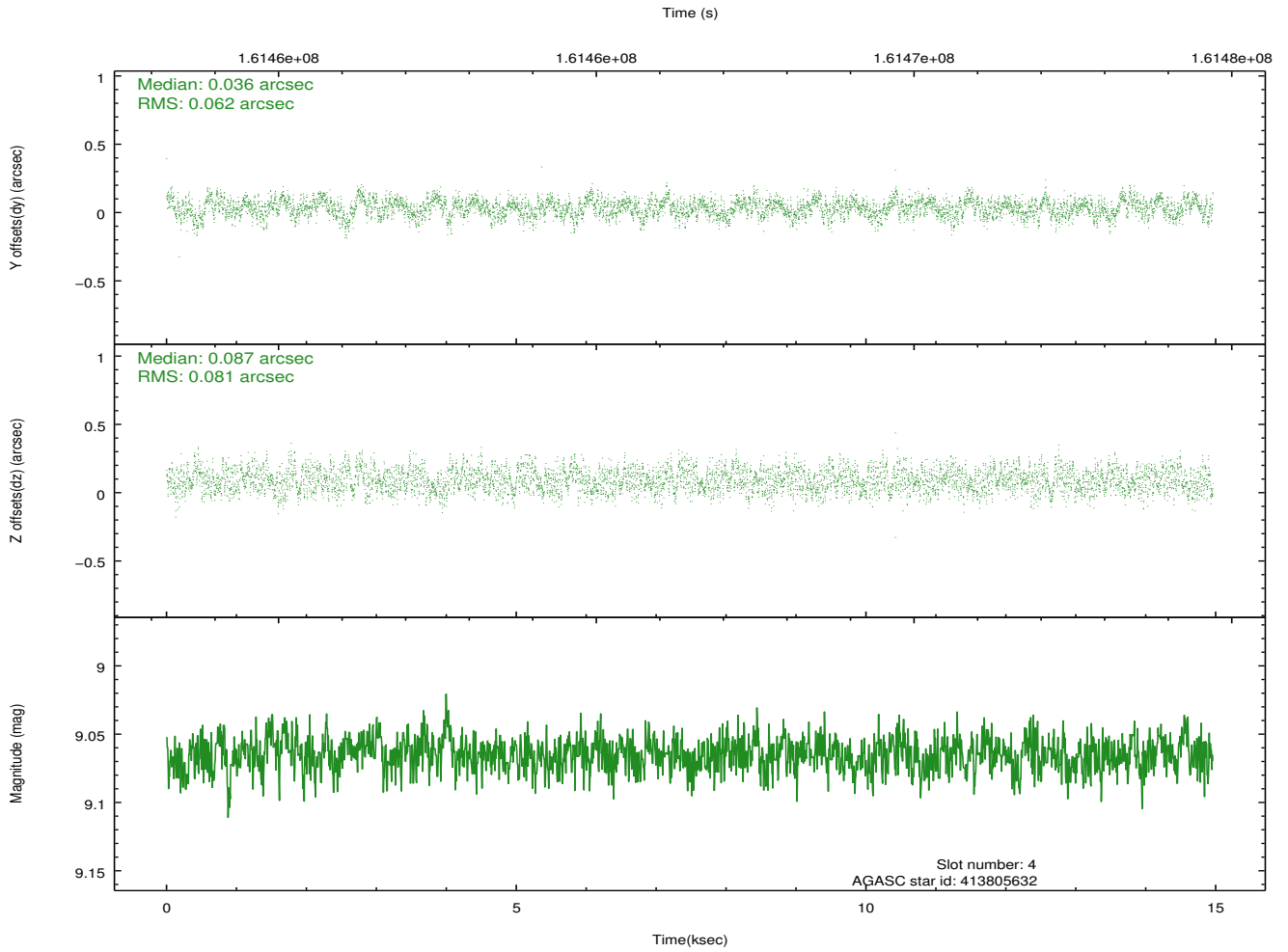
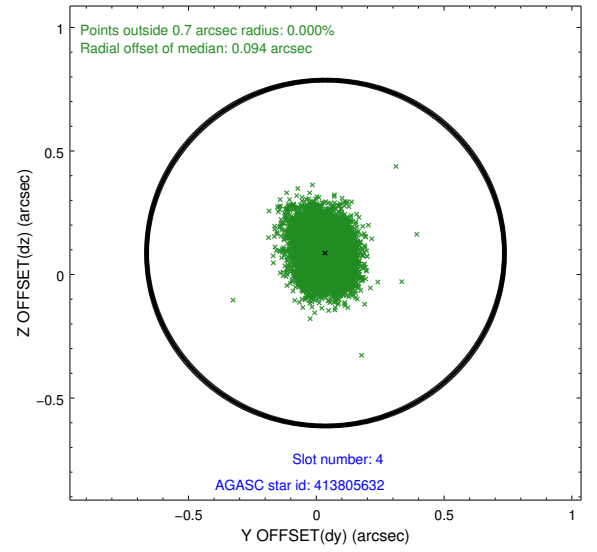
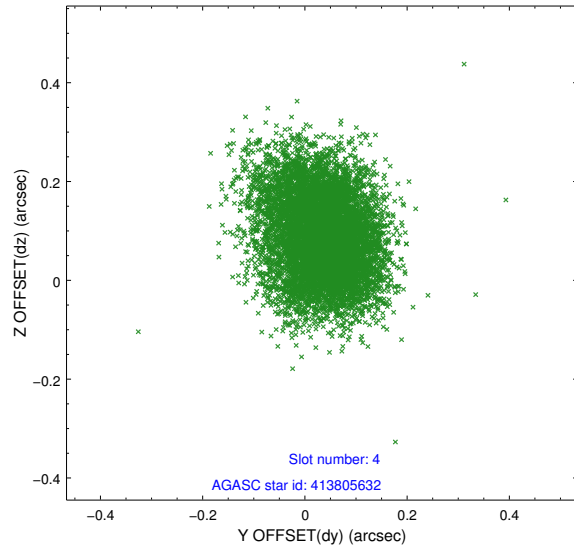
slot	status	id	mag	n_pts	med_dy	med_dz	dr1	dr2	ra	dec	mean_y	mean_z
0	FID	HRC-I-1	7.00	3649	0.027	0.043	0.015	0.023	0.000000	0.000000	-758.56	-1296.08
1	FID	HRC-I-2	7.04	3649	0.088	-0.087	0.006	0.010	0.000000	0.000000	853.92	-1298.13
2	FID	HRC-I-3	7.09	3649	0.004	-0.045	0.014	0.022	0.000000	0.000000	-1186.85	1008.04
3	GUIDE	413802872	9.33	7290	0.035	-0.004	0.103	0.177	308.231239	40.487807	-208.83	-1646.36
4	GUIDE	413805632	9.06	7276	0.036	0.087	0.109	0.173	308.281827	40.295563	-323.14	-2343.18
5	GUIDE	414191528	9.44	7297	0.060	0.008	0.135	0.218	307.084733	41.326864	-2036.99	2291.91
6	GUIDE	414327264	9.02	7298	-0.066	-0.119	0.091	0.145	308.442130	41.550293	1671.47	1733.22
7	GUIDE	414326208	9.93	7227	-0.074	0.025	0.135	0.227	308.548887	41.510502	1891.47	1498.55

2.4 Star Slots

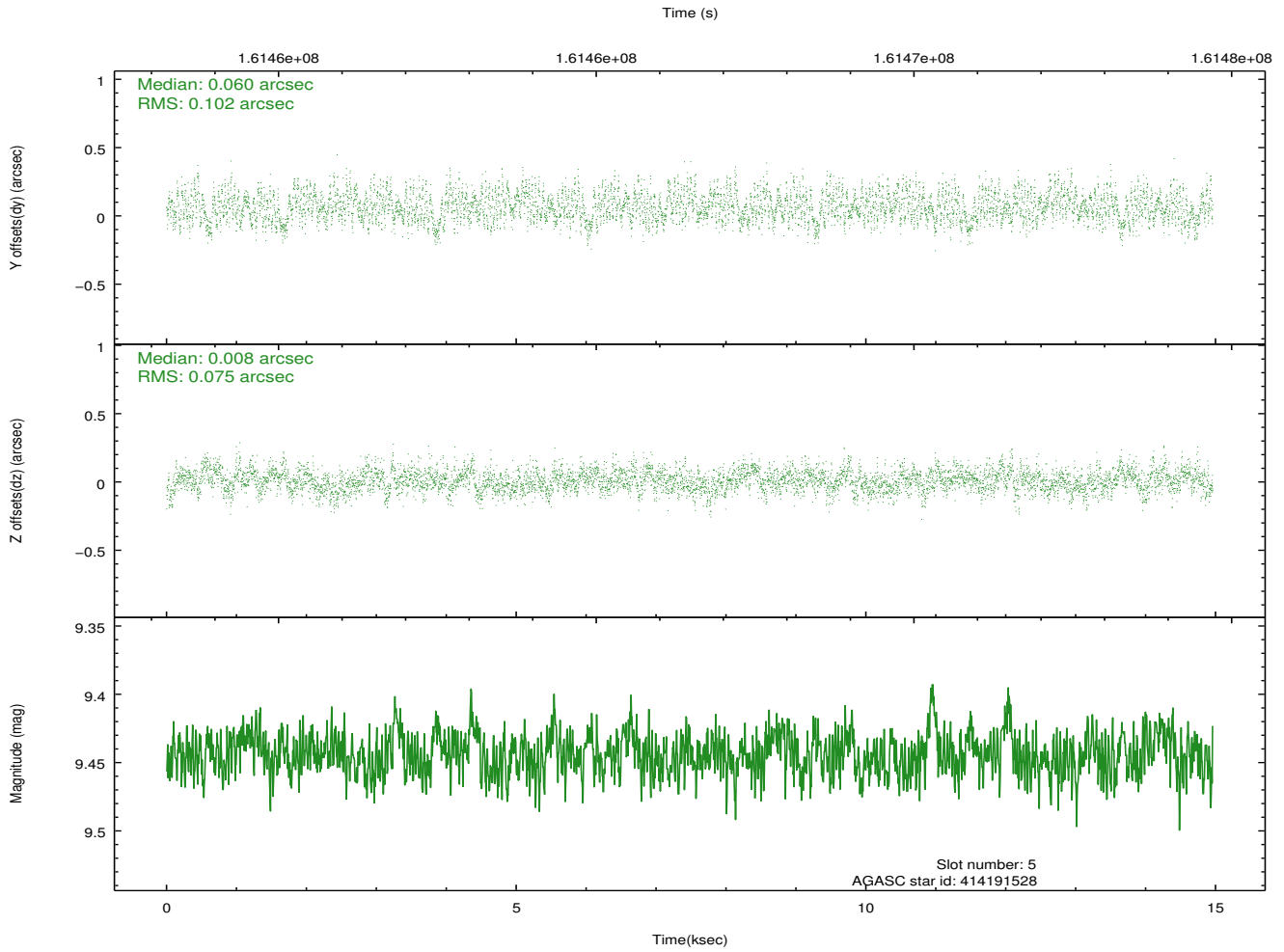
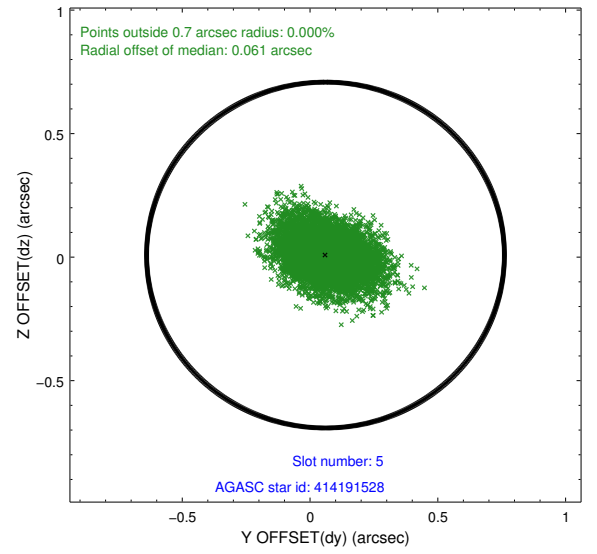
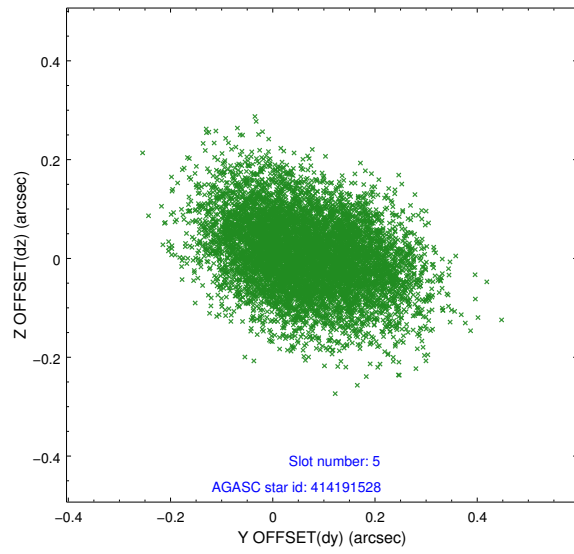
2.4.1 Slot 3



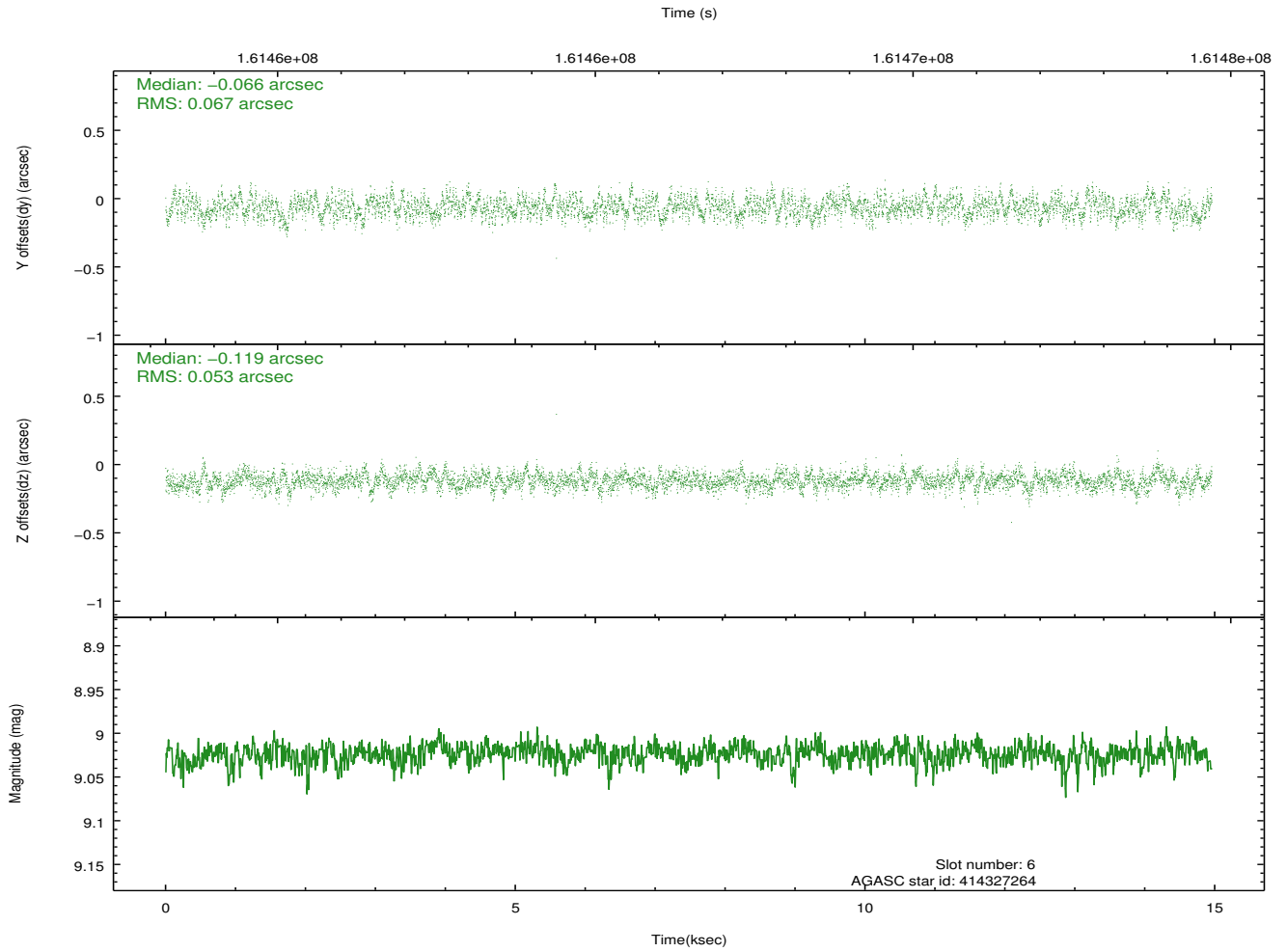
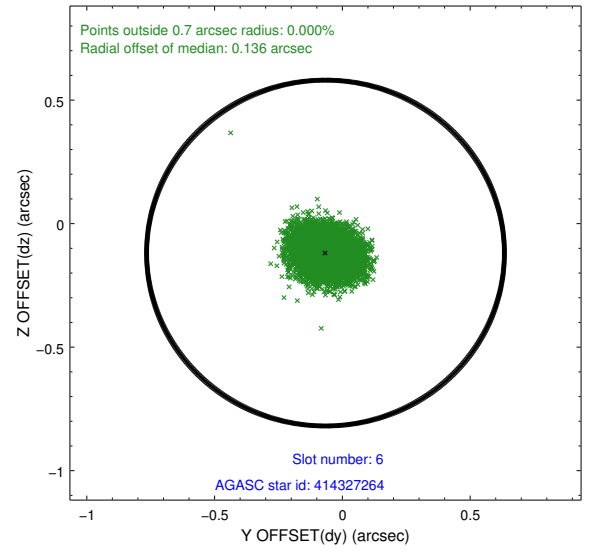
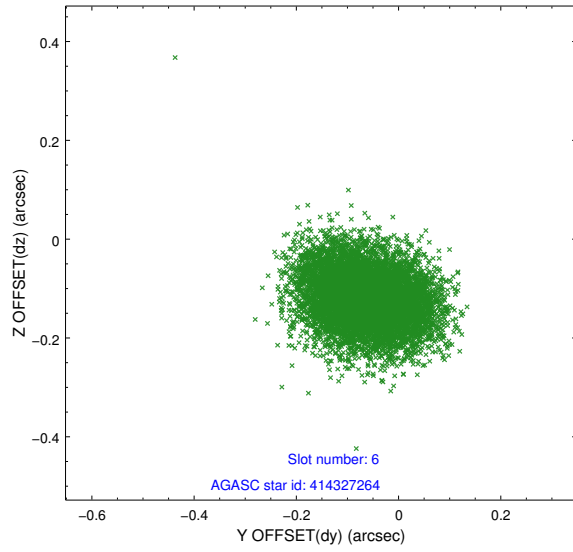
2.4.2 Slot 4



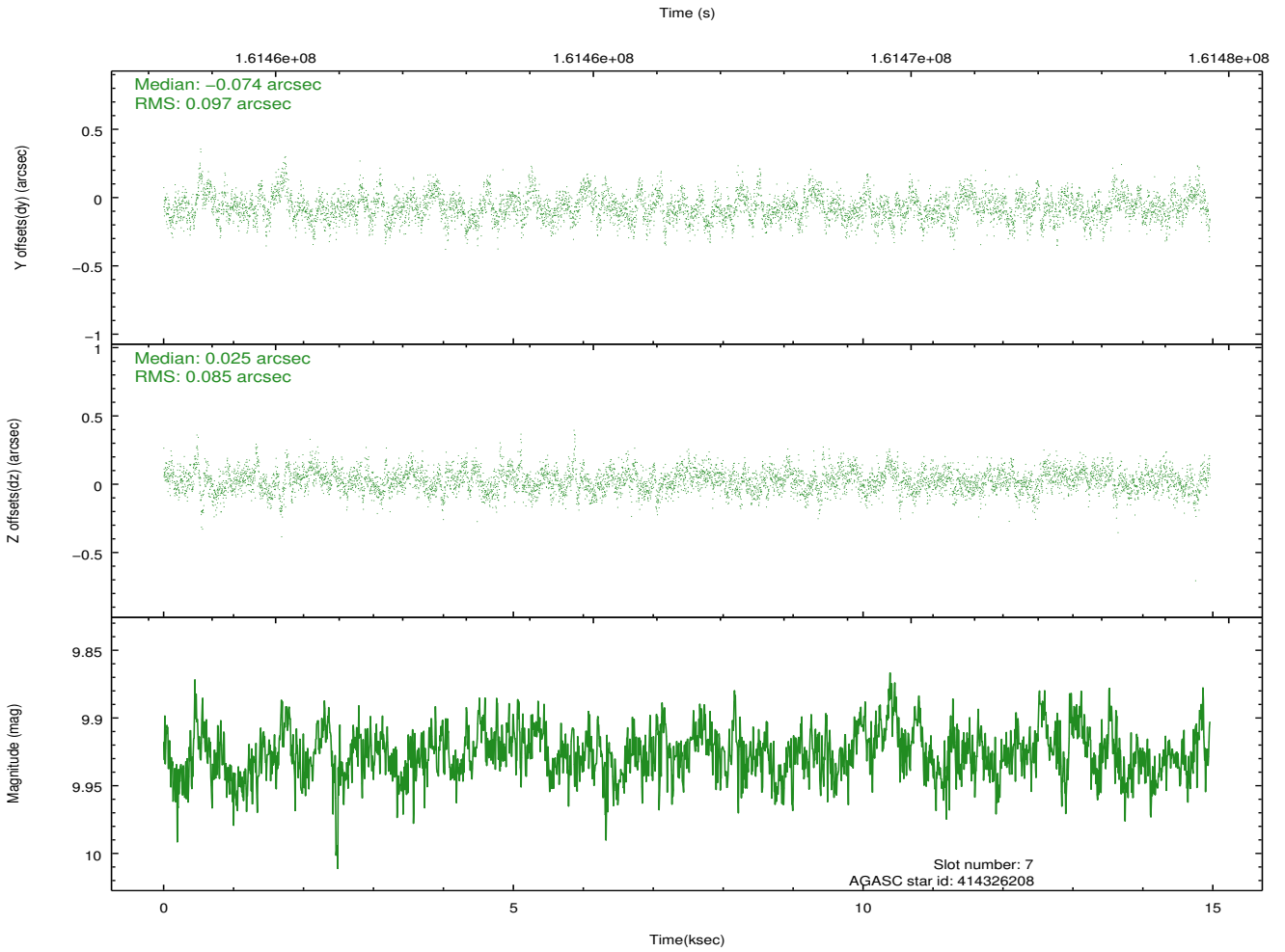
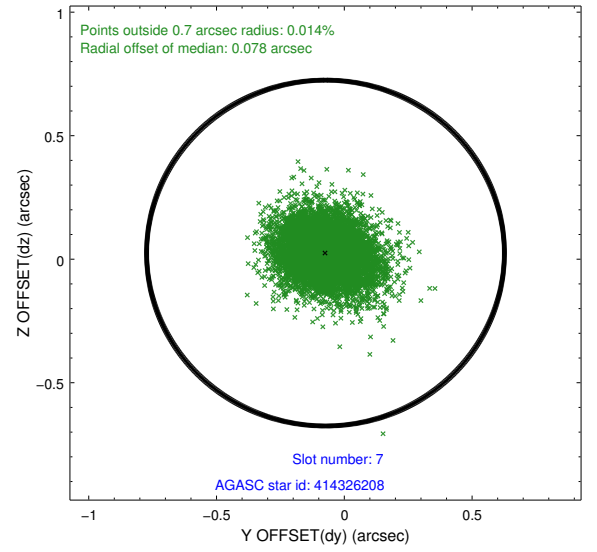
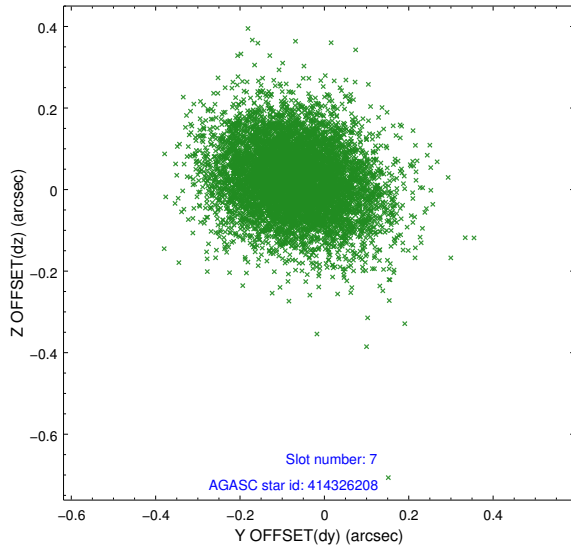
2.4.3 Slot 5



2.4.4 Slot 6

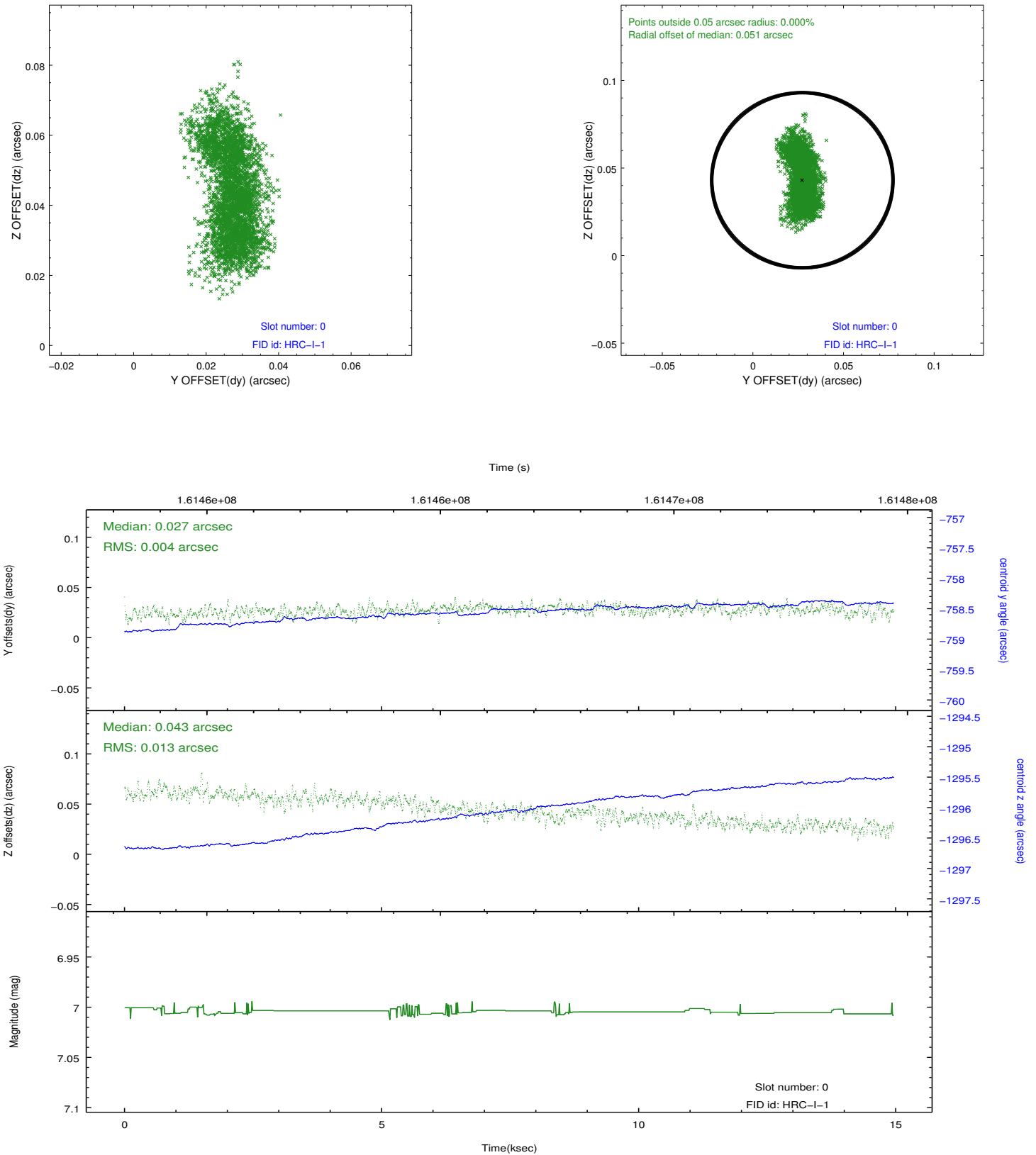


2.4.5 Slot 7

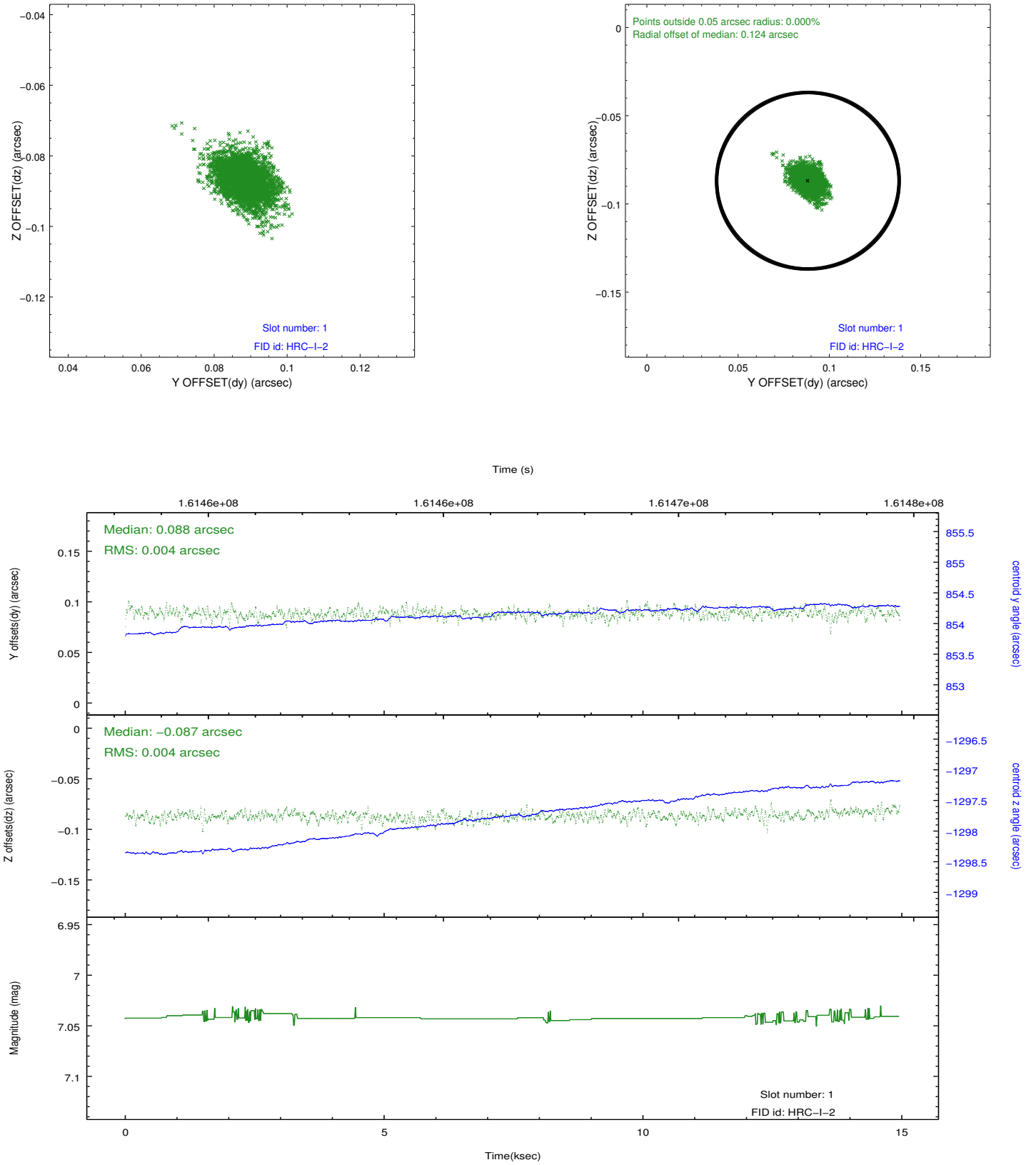


2.5 FID Slots

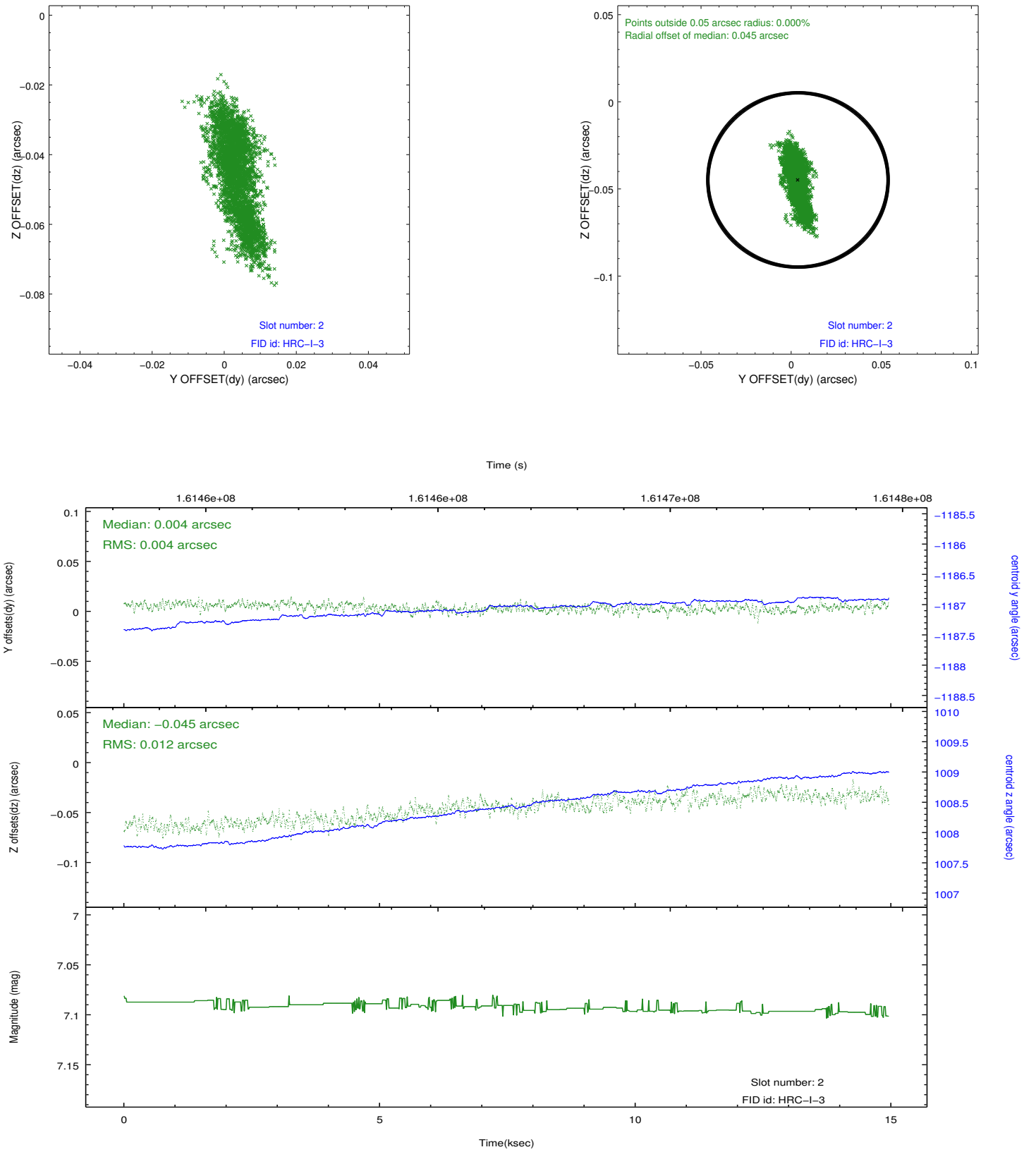
2.5.1 Slot 0



2.5.2 Slot 1



2.5.3 Slot 2



A Summary

A.1 Status

V&V Scientist	Jen Lauer
V&V Date (YYYY-MM-DD)	2012.11.05
V&V Edition	1
V&V Disposition and Status	OK
V&V Charge Time	14.782

A.2 Comments