

V&V Reference Report

L2 ASCDS Version : 7.6.8

Observation 3812 - L2 Version 3
Chandra X-Ray Center

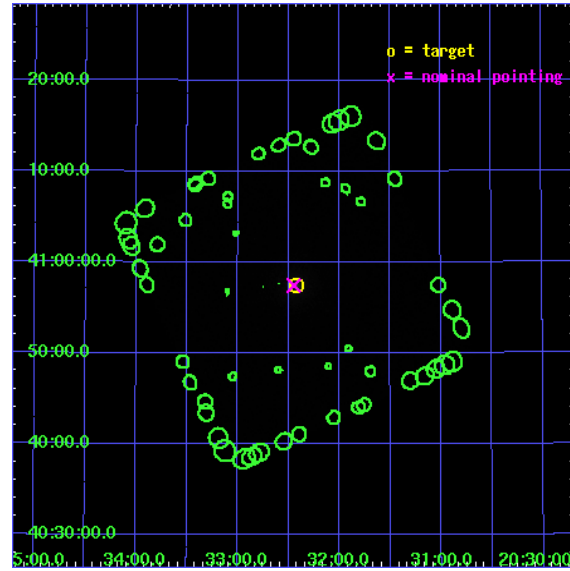
L2 Processing Date : Nov 21 2007

Contents

1	Front	2
2	OBI	3
2.1	OBI	3
2.1.1	Images	3
2.1.2	Parameters	4
2.1.3	Events	4
2.2	Compared Parameters	5
2.3	Aspect	6
2.4	Star Slots	9
2.4.1	Slot 3	9
2.4.2	Slot 4	10
2.4.3	Slot 5	11
2.4.4	Slot 6	12
2.4.5	Slot 7	13
2.5	FID Slots	14
2.5.1	Slot 0	14
2.5.2	Slot 1	15
2.5.3	Slot 2	16
3	Point Sources	17
A	Summary	18
A.1	Status	18
A.2	Comments	18

1 Front

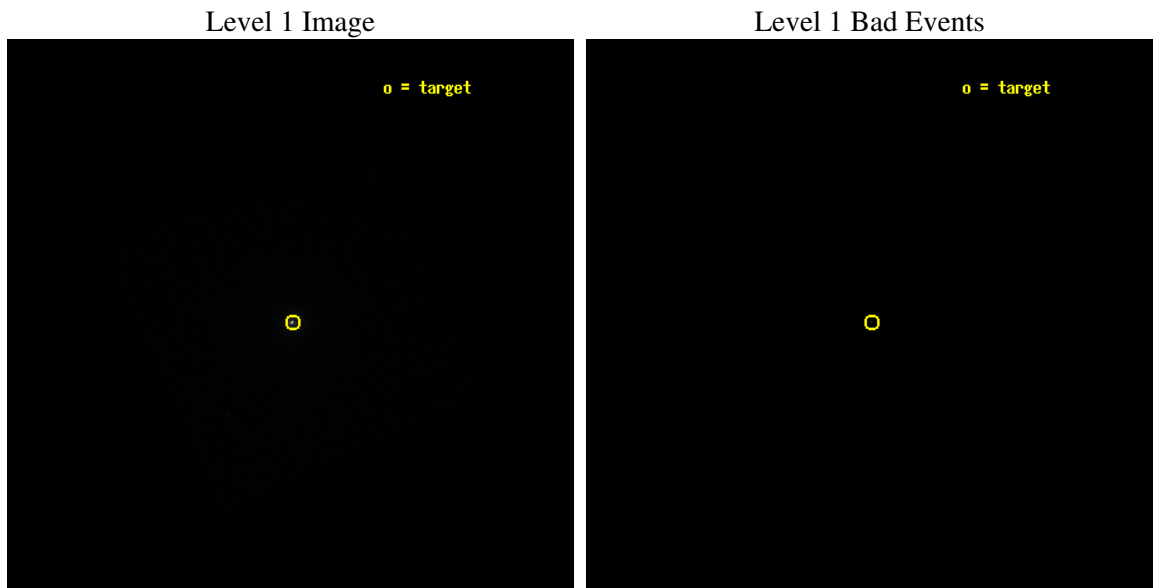
seq_num	400299
obs_id	3812
title	UNDERSTANDING THE EXTENDED EMISSION IN CYGNUS X-3
observer	Dr. William Heindl
object	CYG X-3
ra_targ	308.10625
dec_targ	40.957694
ra_nom	308.11179167671
dec_nom	40.95756169012
roll_nom	20.639481539588
revision	3
ontime	14782.550620884
livetime	14688.195347214
l2events	603561



2 OBI

2.1 OBI

2.1.1 Images



2.1.2 Parameters

obi_num	0
ascdsver	7.6.11.2
caldbver	3.4.1
date	2007-11-22T01:29:23
revision	3

sched_exp_time	14800.000000
ontime	14782.550620884
l1events	831539

2.1.3 Events

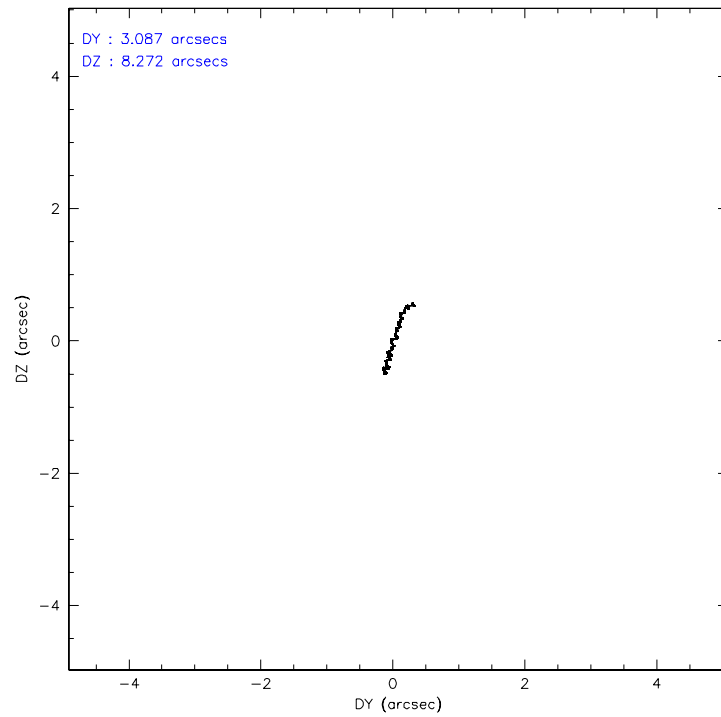
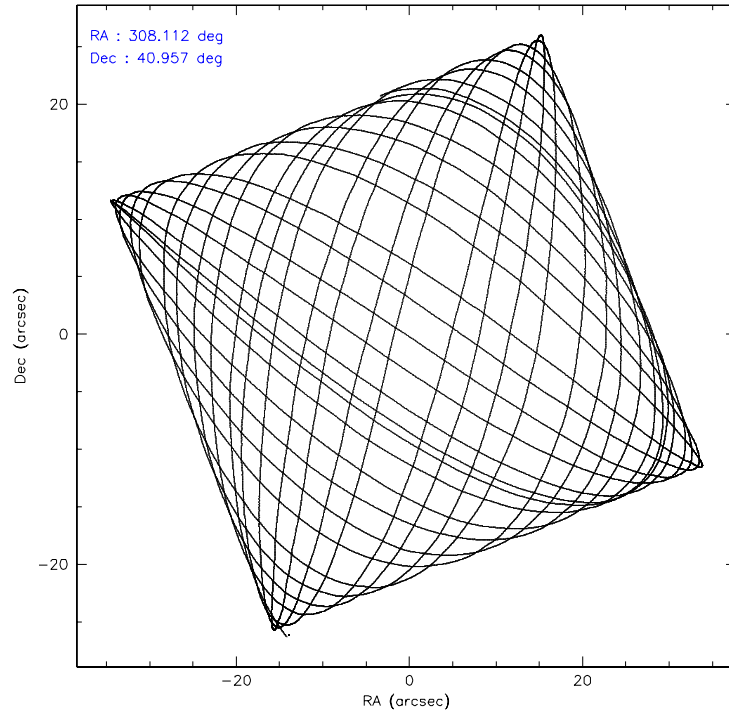
Level 1 Events

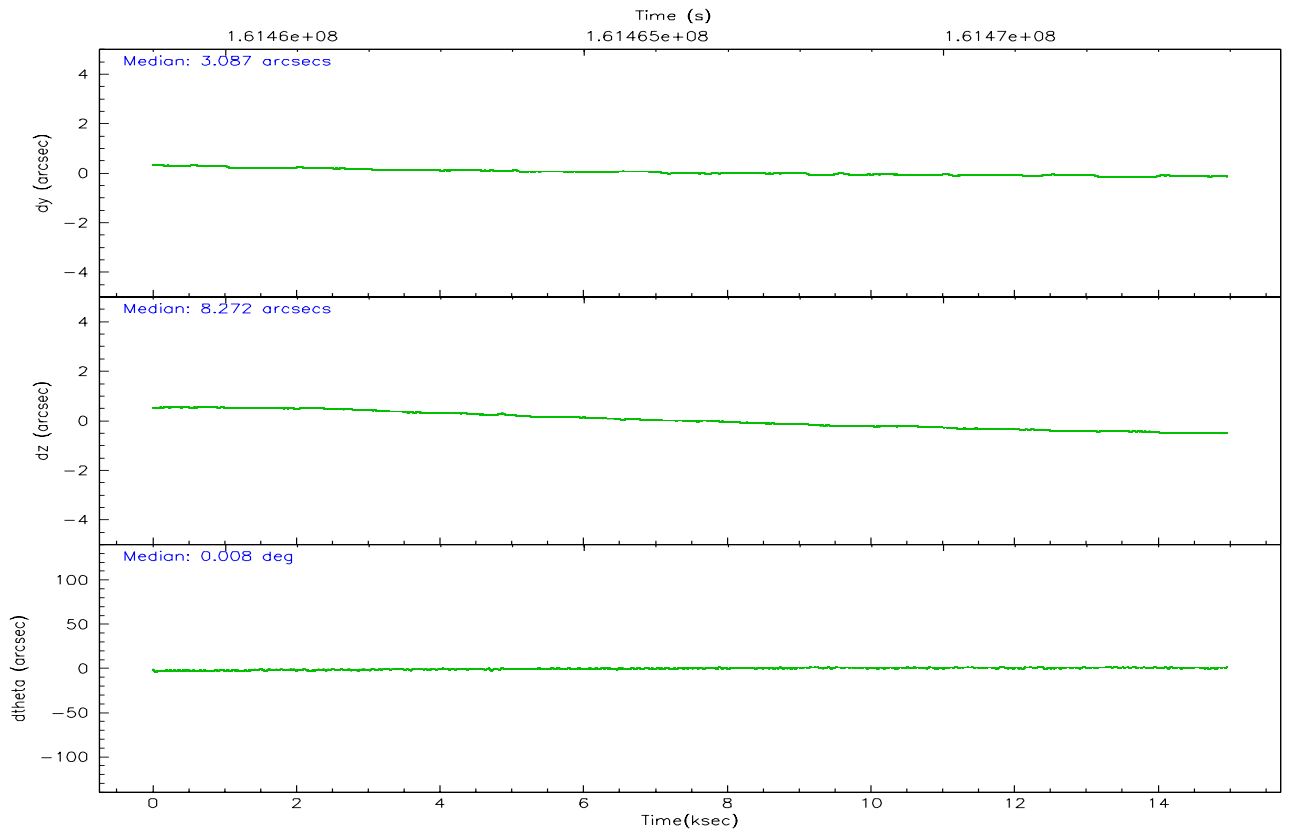
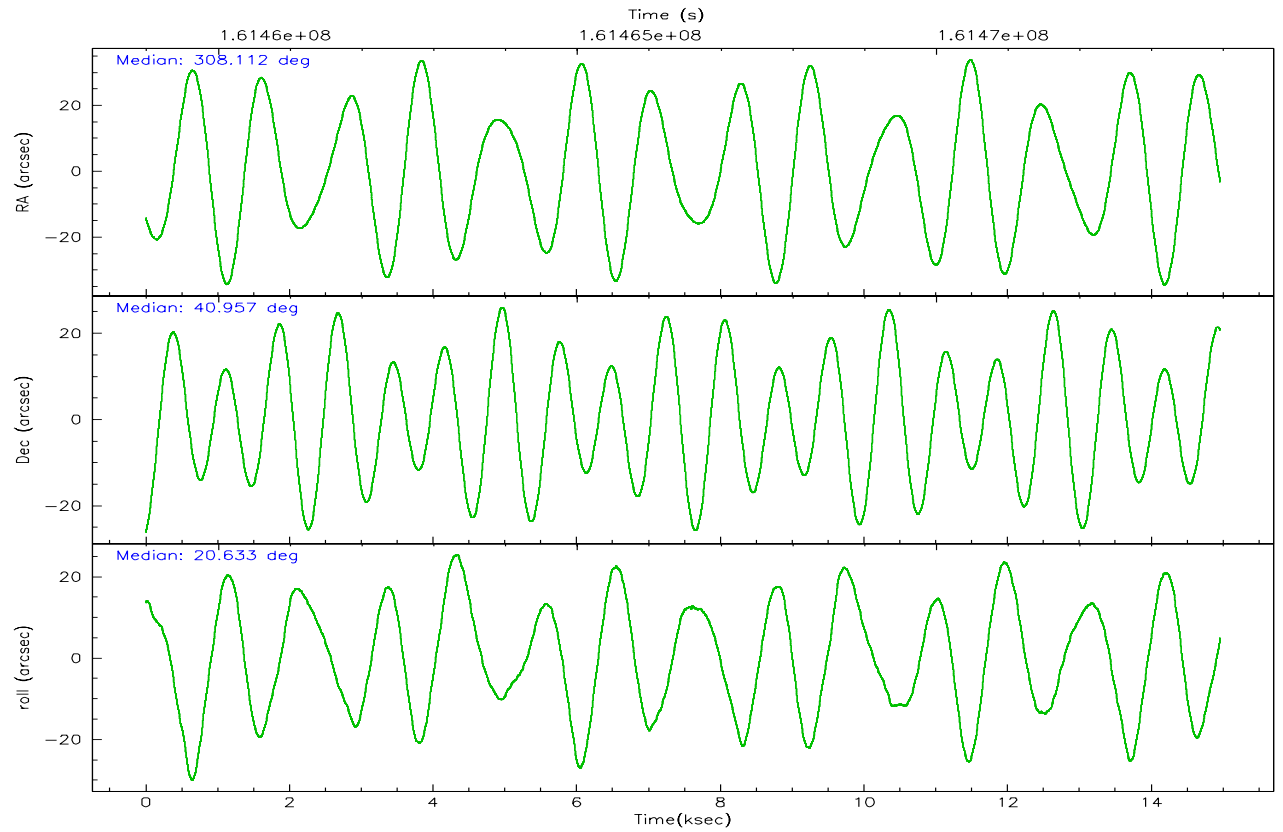
	segment 0
level 1 events	831539
rejected events	5907
rejected %	0%

2.2 Compared Parameters

Parameter	Planned	Actual	Parameter	Planned	Actual
Instrument	HRC	HRC	Obspar format version number	6	6
Detector	HRC-I	HRC-I	Obspar file type	PREDICTED	ACTUAL
Grating	NONE	NONE	Obspar update status	NONE	UPDATED
Data mode	OBSERVING	OBSERVING			
Observation mode	POINTING	POINTING			
Pointing RA	308.089663	308.1117916767068			
Pointing Dec	40.936193	40.95756169012013			
Pointing Roll	20.749484	20.63948153958825			
SIM focus pos (mm)	-1.040293	-1.038866356238299			
SIM defocus (mm)	0	0.001426264420575141			
SIM translation stage pos (mm)	126.985494	126.9804656746847			
SIM translation stage offset (mm)	0	0.005023216916882234			
Observation start time	161459153.184000	161458636.33447			
Observation start date	2003-02-12T17:44:49	2003-02-12T17:37:16			
Observation end time	161473953.184000	161474857.47265			
Observation end date	2003-02-12T21:51:29	2003-02-12T22:07:37			

2.3 Aspect



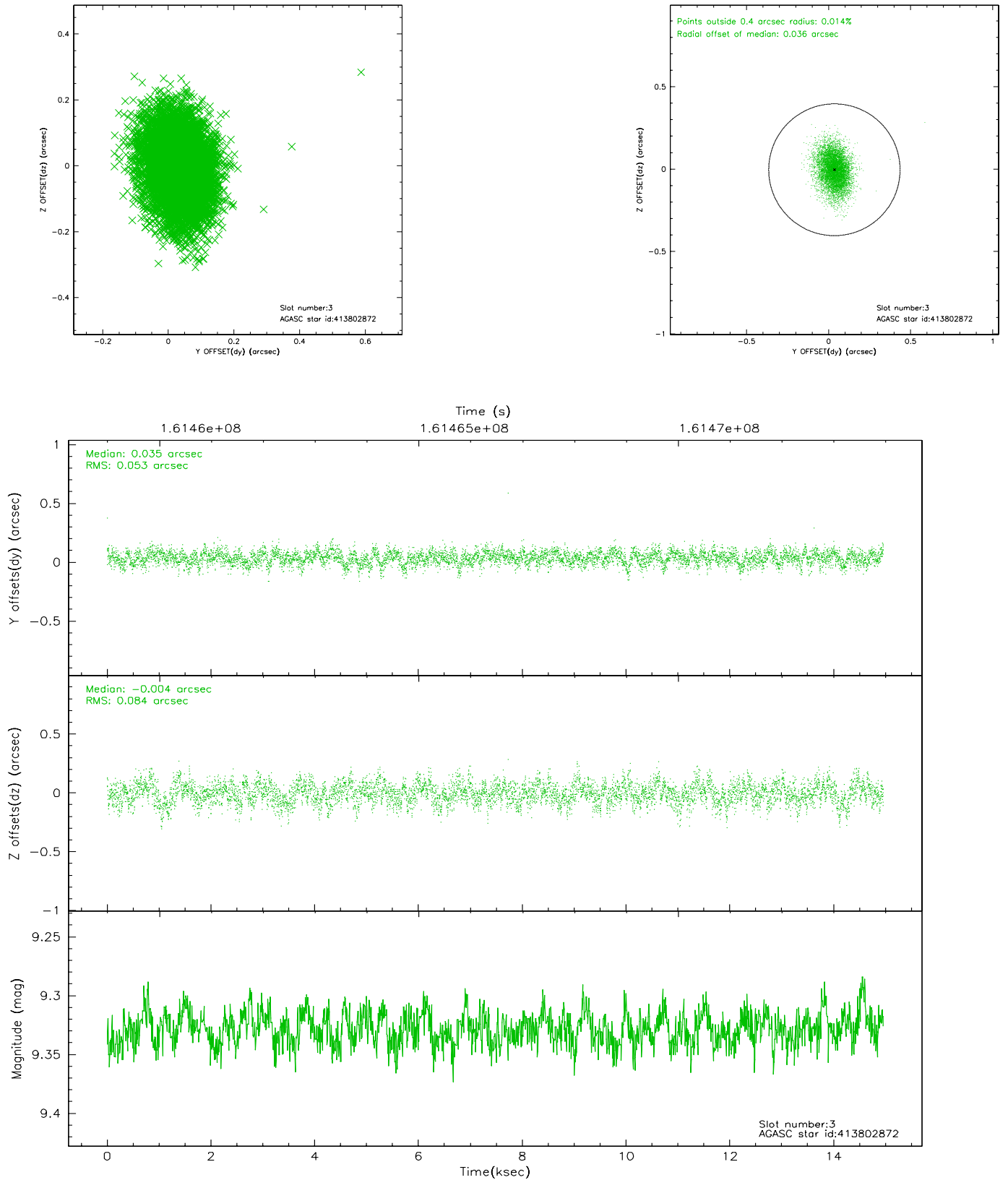


Slot Statistics

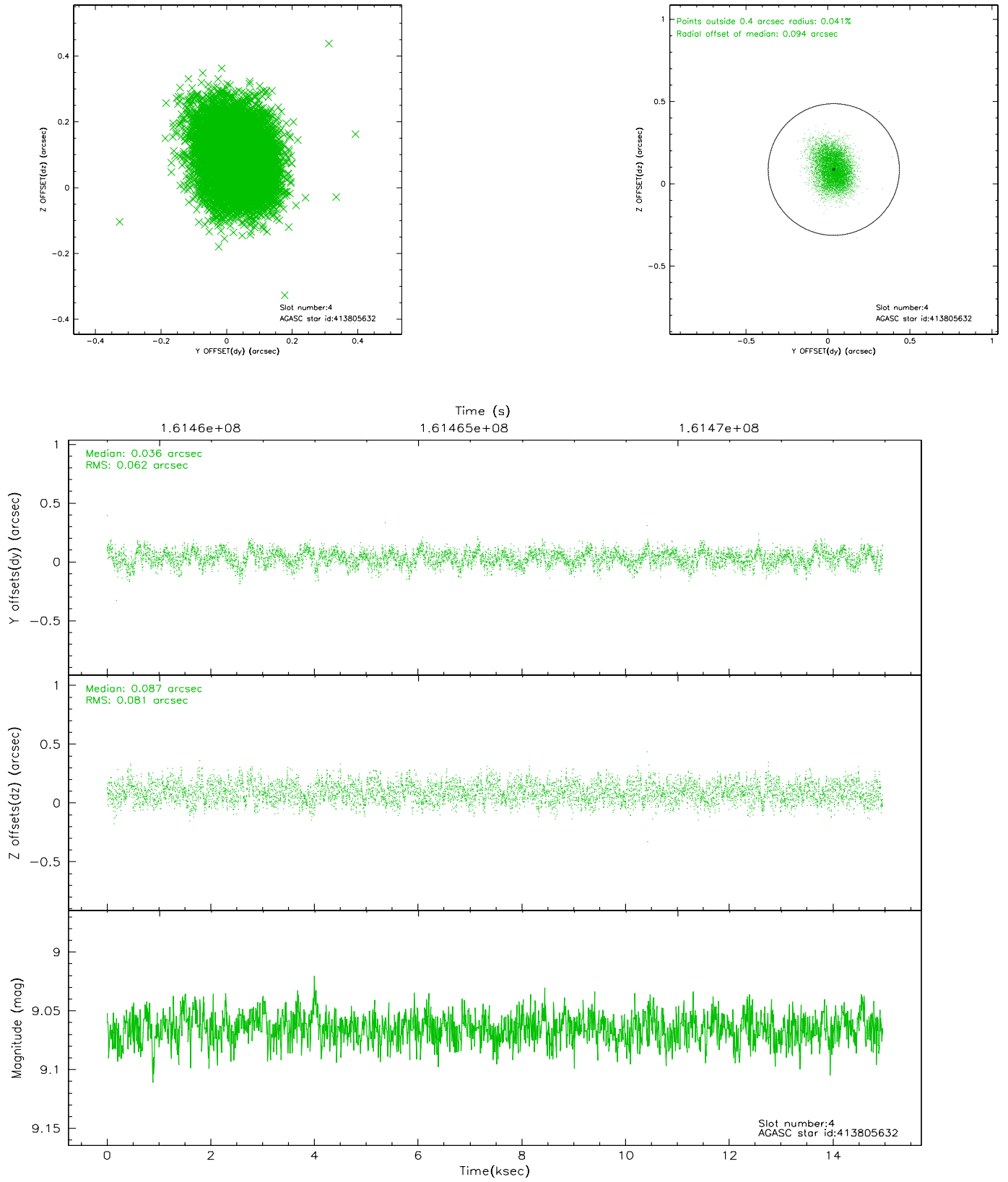
slot	status	id	mag	n_pts	med_dy	med_dz	dr1	dr2	ra	dec	mean_y	mean_z
0	FID	HRC-I-1	7.00	3649	0.027	0.043	0.015	0.023	0.000000	0.000000	-758.56	-1296.08
1	FID	HRC-I-2	7.04	3649	0.088	-0.087	0.006	0.010	0.000000	0.000000	853.92	-1298.13
2	FID	HRC-I-3	7.09	3649	0.004	-0.045	0.014	0.022	0.000000	0.000000	-1186.85	1008.04
3	GUIDE	413802872	9.33	7290	0.035	-0.004	0.103	0.177	308.231239	40.487807	-208.83	-1646.36
4	GUIDE	413805632	9.06	7276	0.036	0.087	0.109	0.173	308.281827	40.295563	-323.14	-2343.18
5	GUIDE	414191528	9.44	7297	0.060	0.008	0.135	0.218	307.084733	41.326864	-2036.99	2291.91
6	GUIDE	414327264	9.02	7298	-0.066	-0.119	0.091	0.145	308.442130	41.550293	1671.47	1733.22
7	GUIDE	414326208	9.93	7227	-0.074	0.025	0.135	0.227	308.548887	41.510502	1891.47	1498.55

2.4 Star Slots

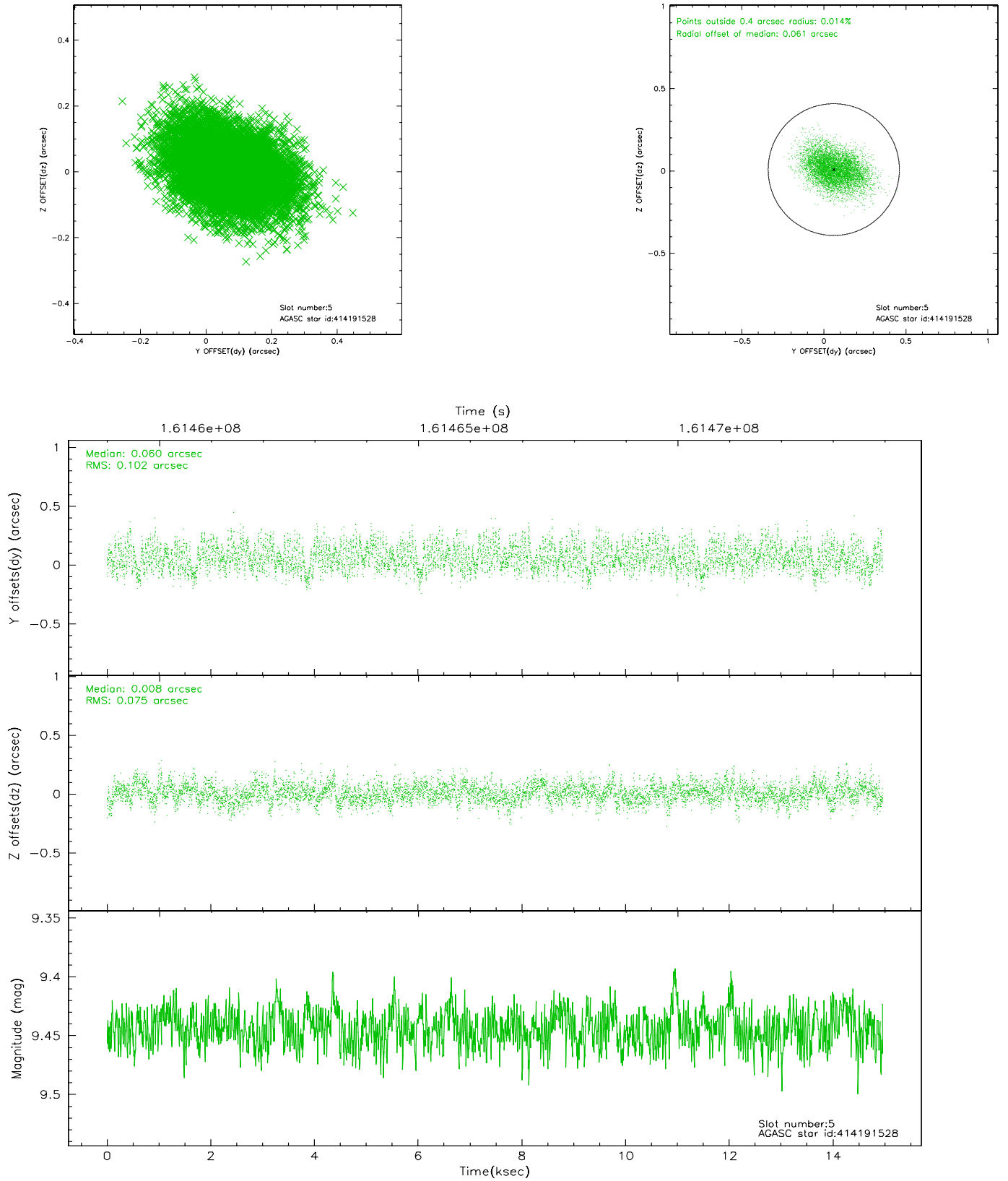
2.4.1 Slot 3



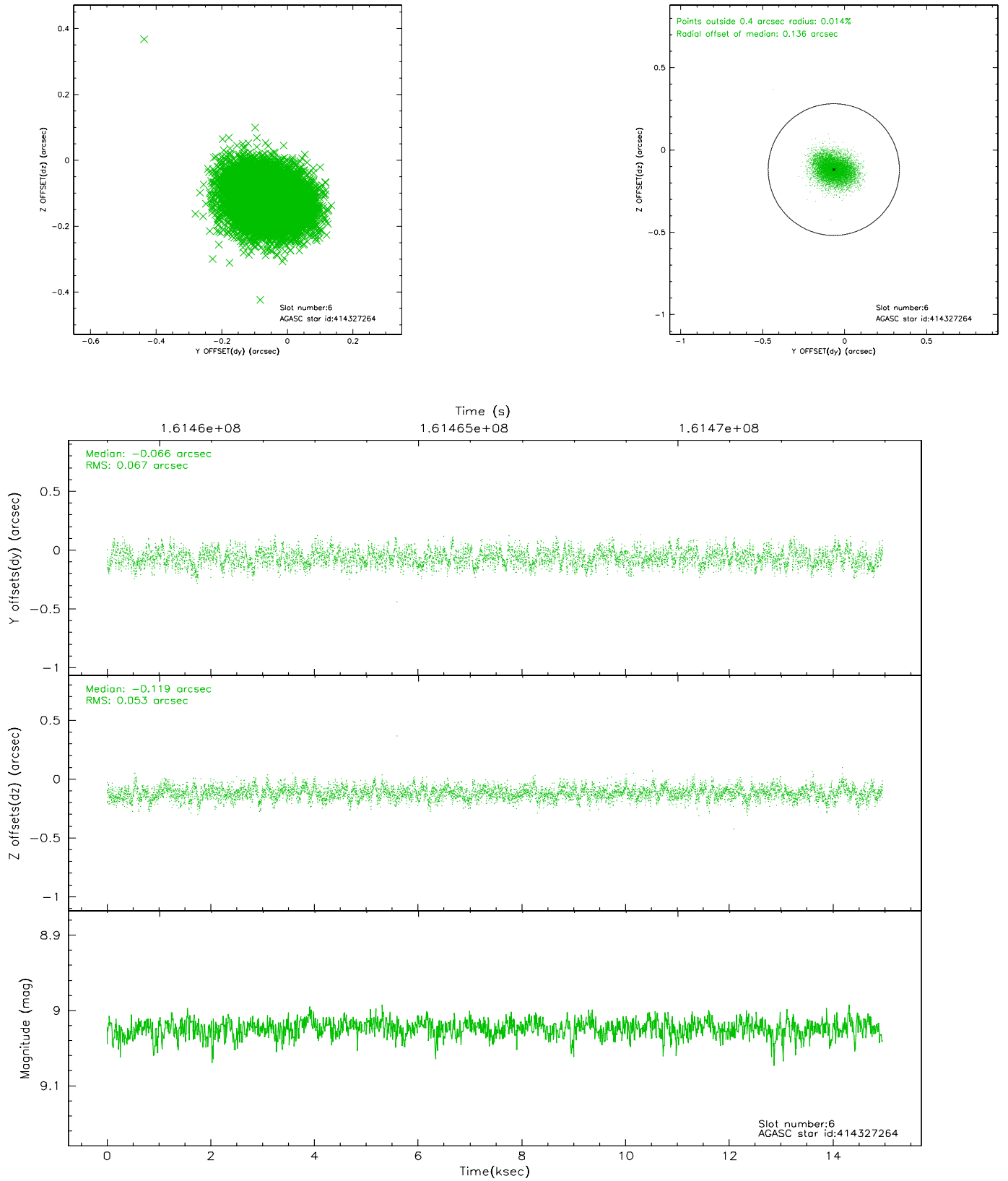
2.4.2 Slot 4



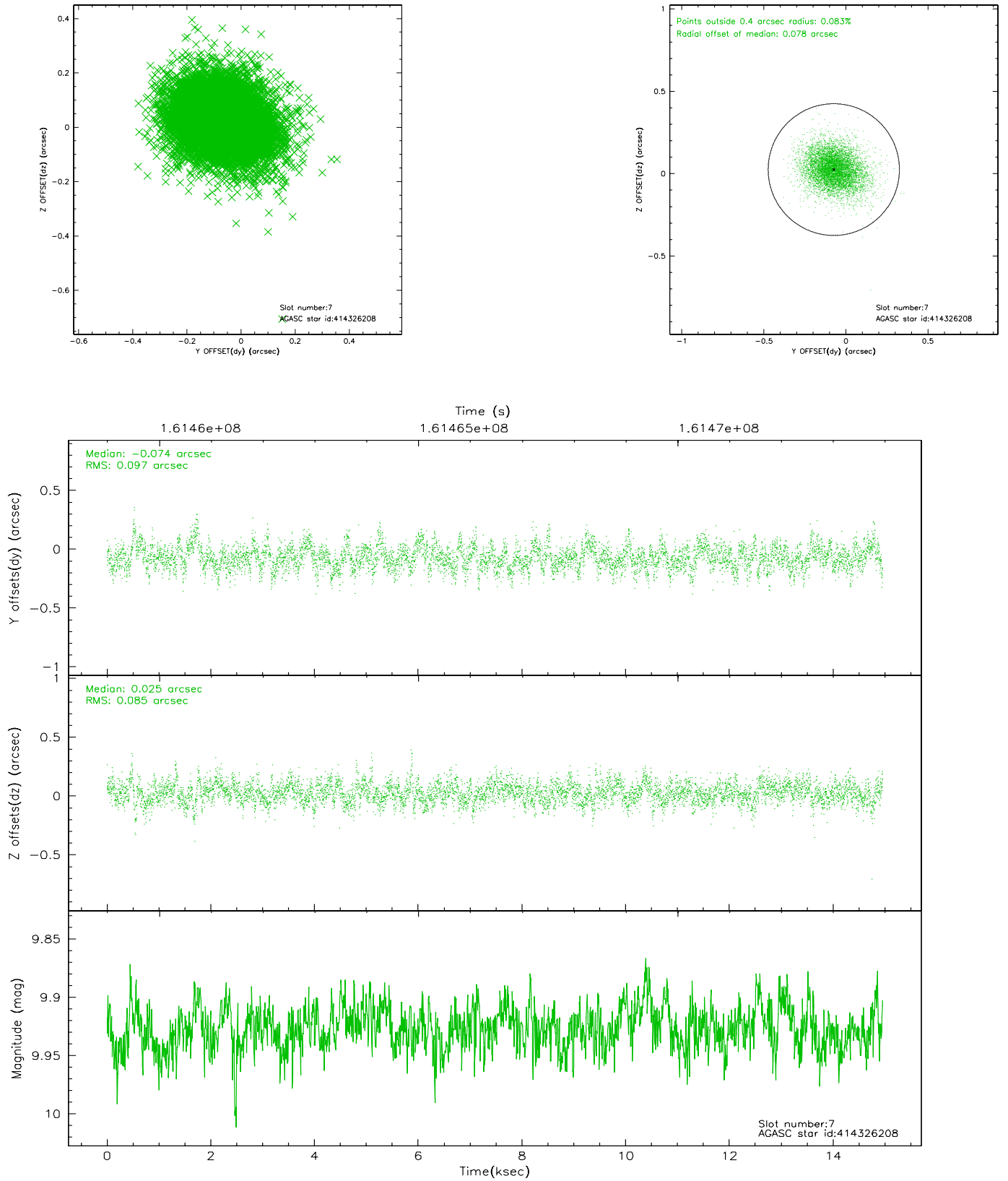
2.4.3 Slot 5



2.4.4 Slot 6

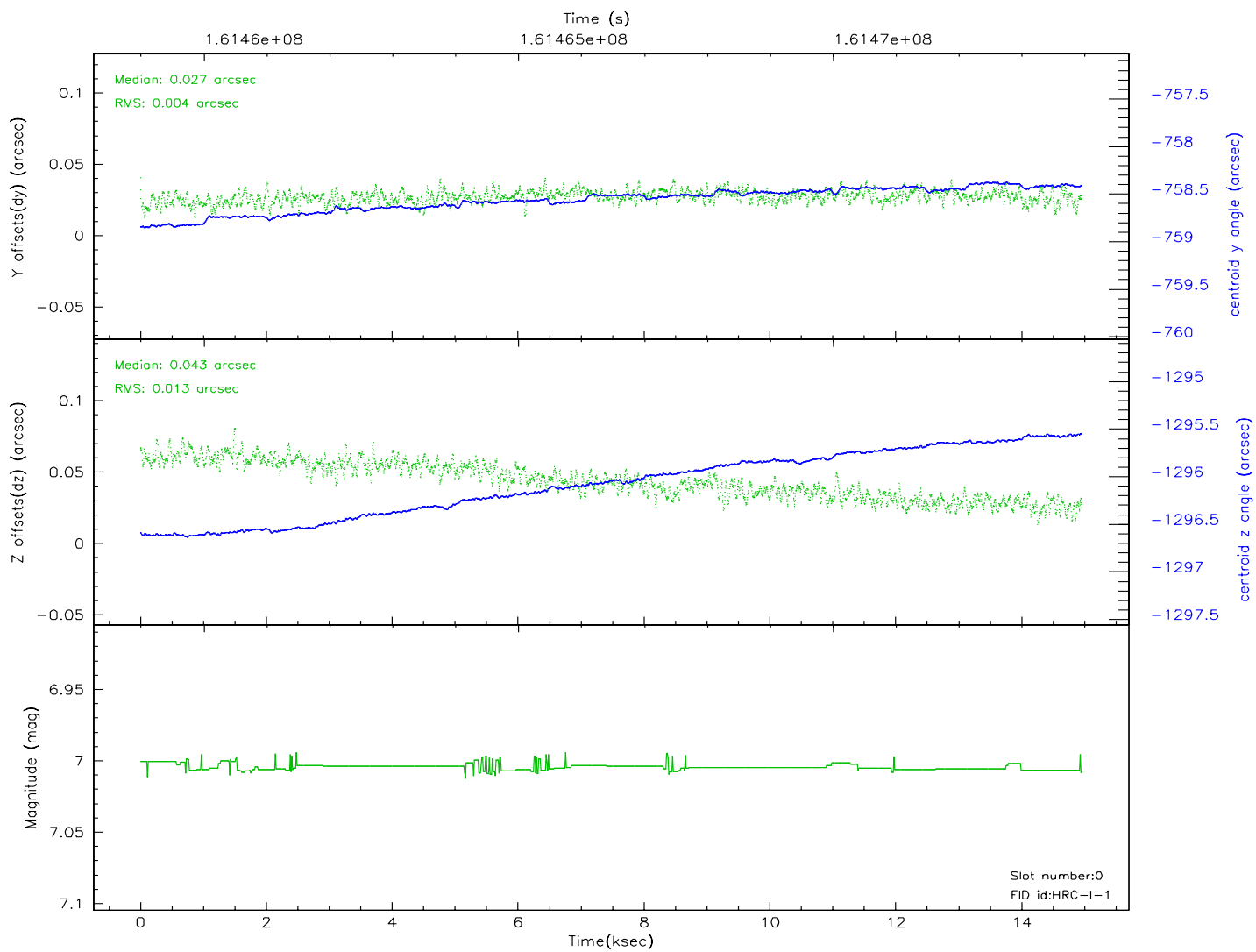
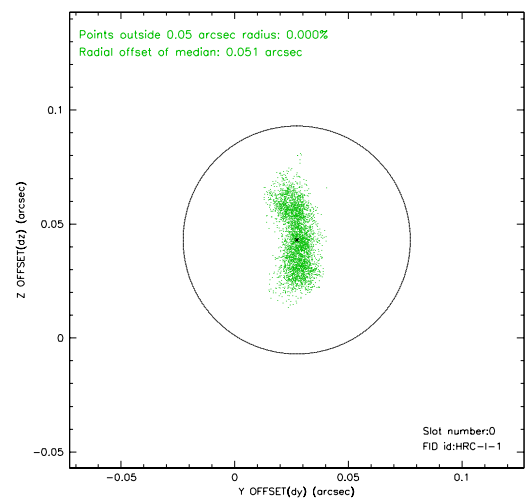
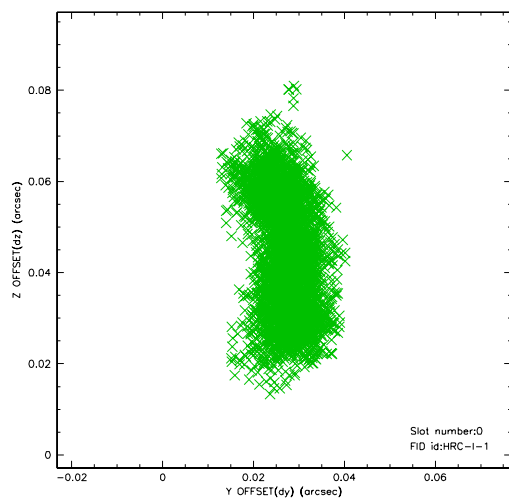


2.4.5 Slot 7

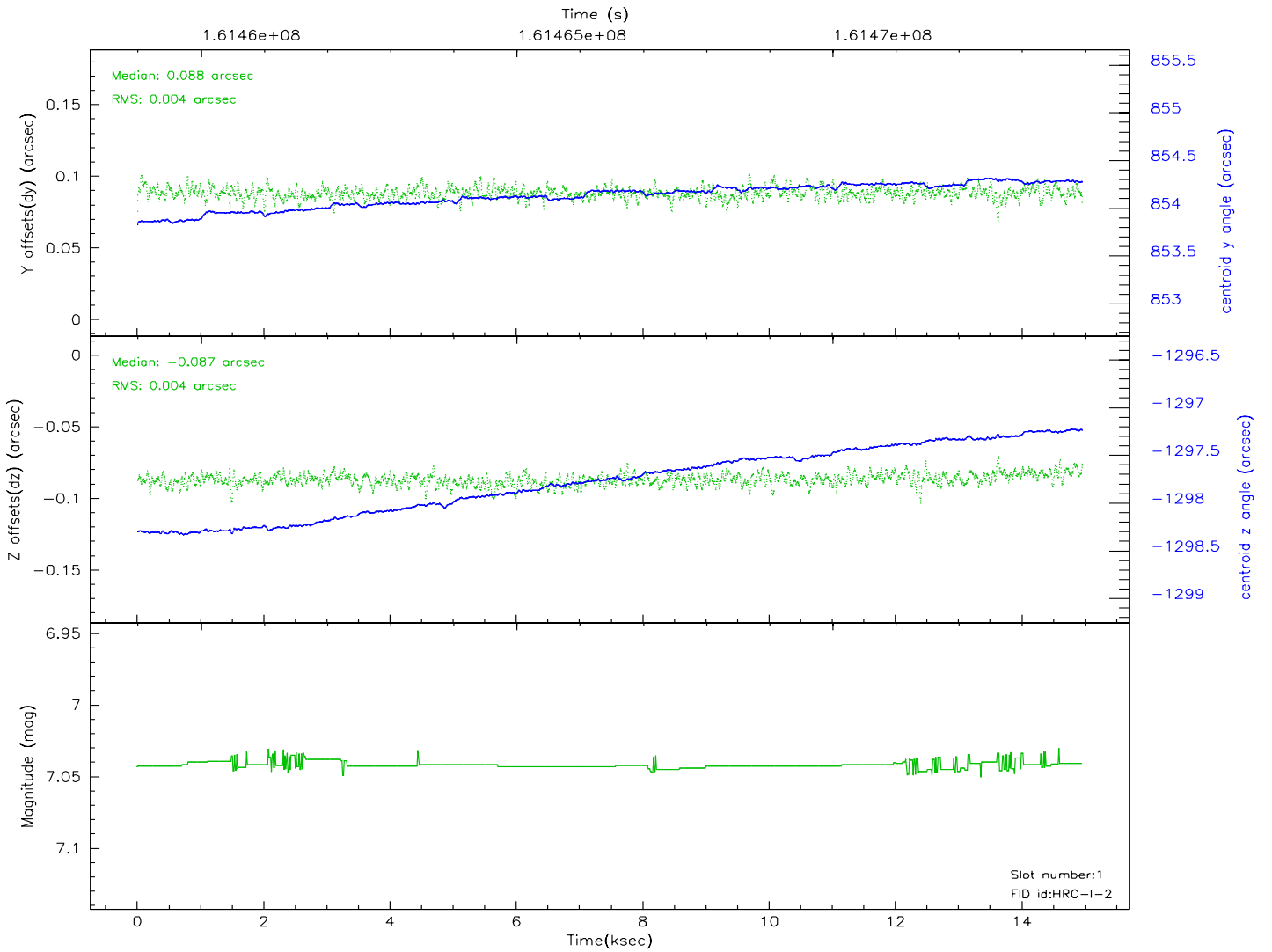
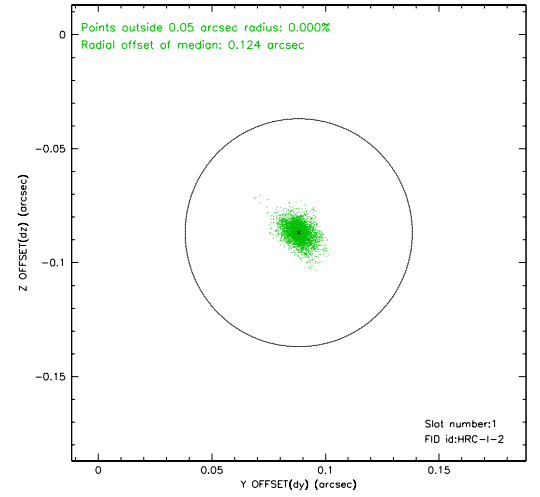
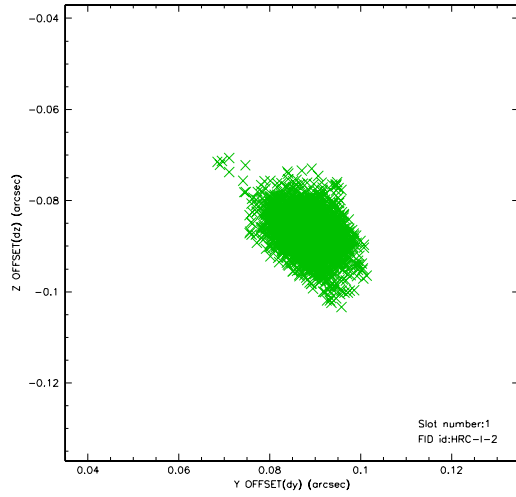


2.5 FID Slots

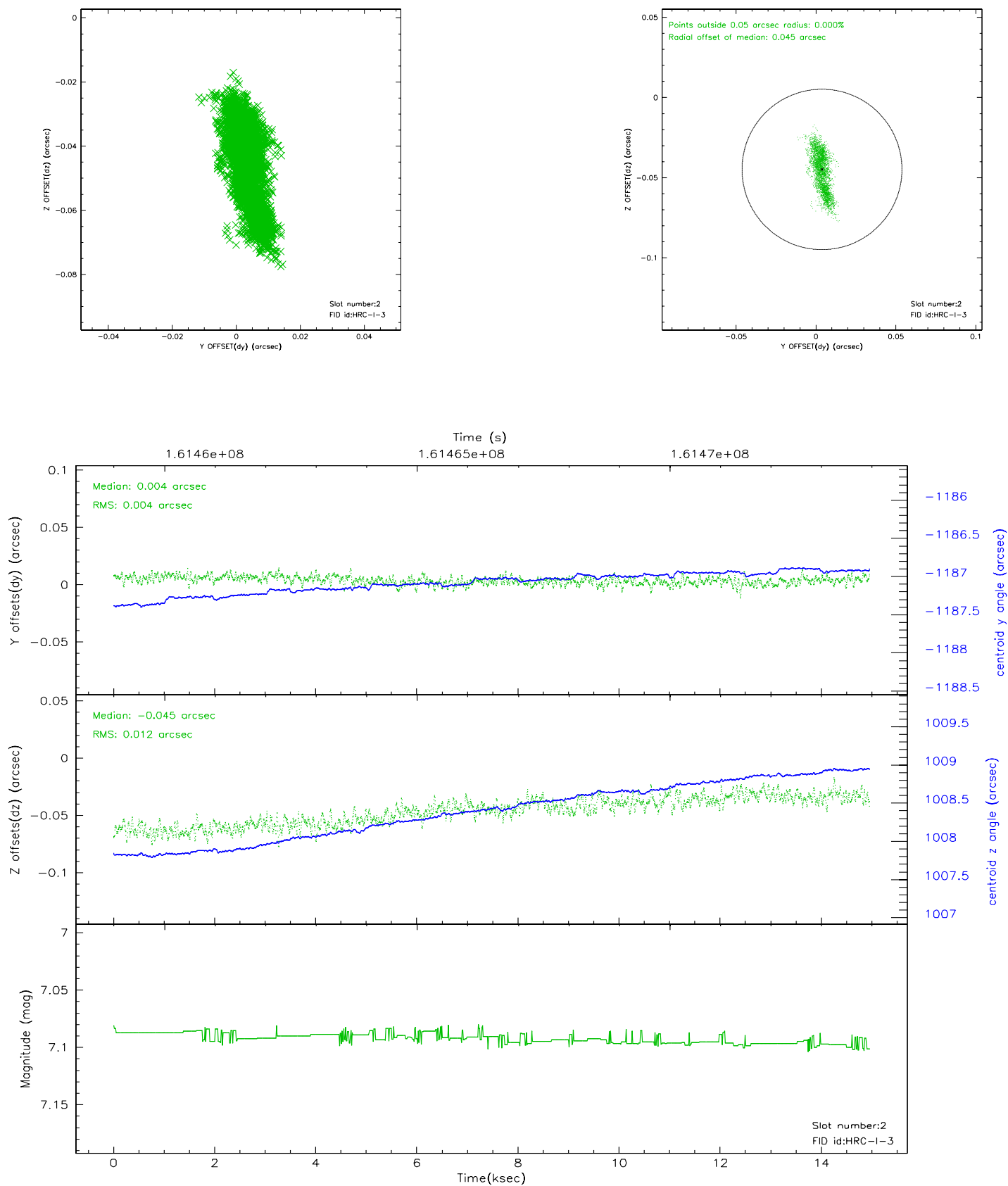
2.5.1 Slot 0



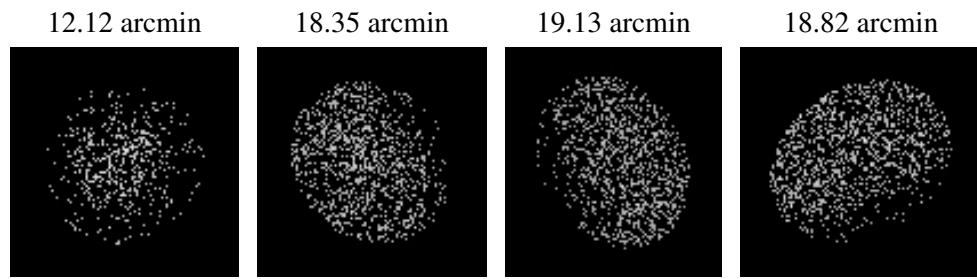
2.5.2 Slot 1



2.5.3 Slot 2



3 Point Sources



A Summary

A.1 Status

V&V Scientist	Jen Lauer
V&V Date (YYYY-MM-DD)	2007.12.04
V&V Edition	1
V&V Disposition and Status	OK
V&V Charge Time	14.782

A.2 Comments

The current observation has been reprocessed as part of Repro III ('C' supplement) the purpose of which is to update all HRC-I ObsIDs since Jan 2000 to the latest calibrations available for that configuration. Specifically, we are updating the DEGAP solution and the Gain Maps applied. For more information see the Repro IIIC web page at

<http://asc.harvard.edu/cda/repro3.html#IIIC>

and the associated links.