

V&V Reference Report

L2 ASCDS Version : 7.6.9

Observation 3722 - L2 Version 001
Chandra X-Ray Center

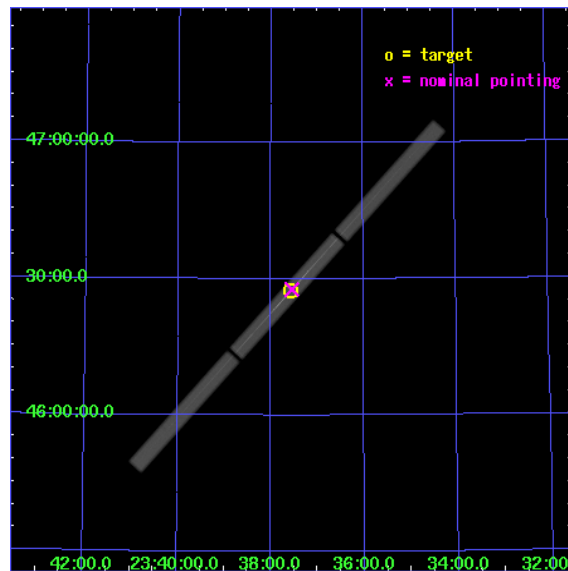
L2 Processing Date : Sep 26 2006

Contents

1	Front	2
2	OBI	3
2.1	OBI	3
2.1.1	Images	3
2.1.2	Parameters	4
2.1.3	Events	4
2.2	Compared Parameters	5
2.3	Aspect	6
2.4	Star Slots	9
2.4.1	Slot 3	9
2.4.2	Slot 4	10
2.4.3	Slot 5	11
2.4.4	Slot 6	12
2.4.5	Slot 7	13
2.5	FID Slots	14
2.5.1	Slot 0	14
2.5.2	Slot 1	15
2.5.3	Slot 2	16
3	Gratings	17
3.1	LETG Arm	17
A	Summary	19
A.1	Status	19
A.2	Comments	19

1 Front

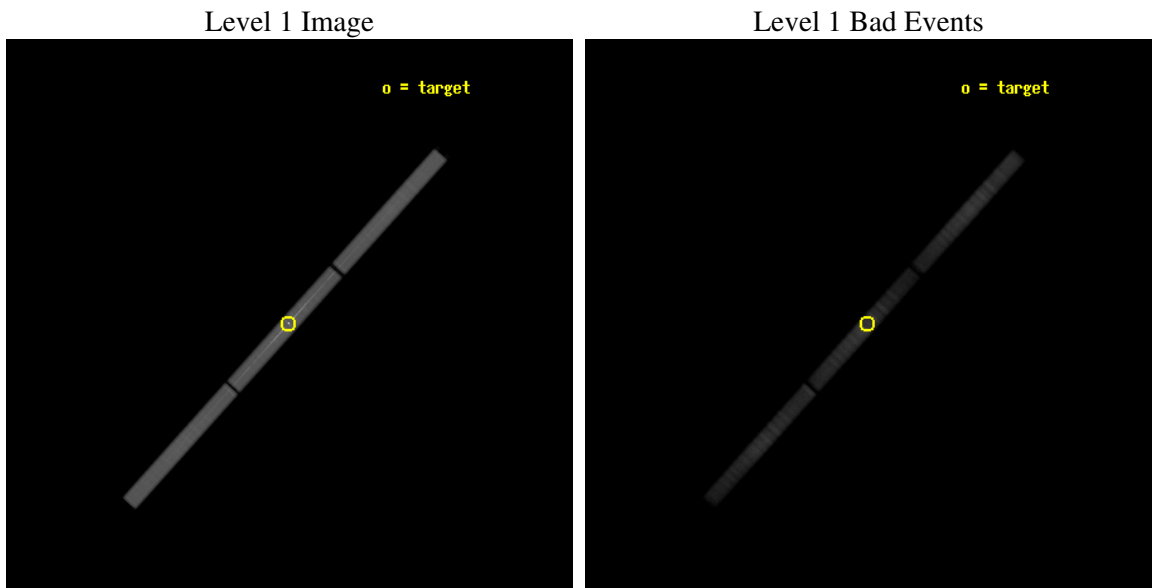
seq_num	200166
obs_id	3722
title	HEAVY ION TRANSPORT: MULTI-TEMPERATURE ABUNDANCE STUDIES OF THE ACTIVE RS CVN LAMBDA AND
observer	Dr. Nancy Brickhouse
object	LAMBDA AND
ra_targ	354.390833
dec_targ	46.458139
ra_nom	354.38643309503
dec_nom	46.461737269385
roll_nom	132.07925501935
revision	3
ontime	49154.902019829
livetime	48820.637632975
l2events	2656535



2 OBI

2.1 OBI

2.1.1 Images



2.1.2 Parameters

obi_num	0
ascdsver	7.6.9
caldbver	3.2.3
date	2006-09-26T11:09:34
revision	3

sched_exp_time	49300.000000
ontime	49480.852034271
l1events	3779974

2.1.3 Events

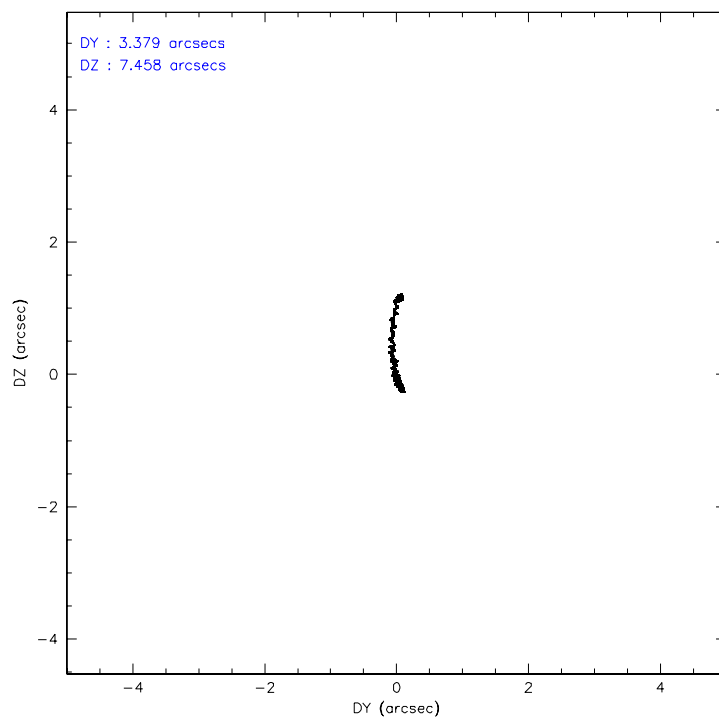
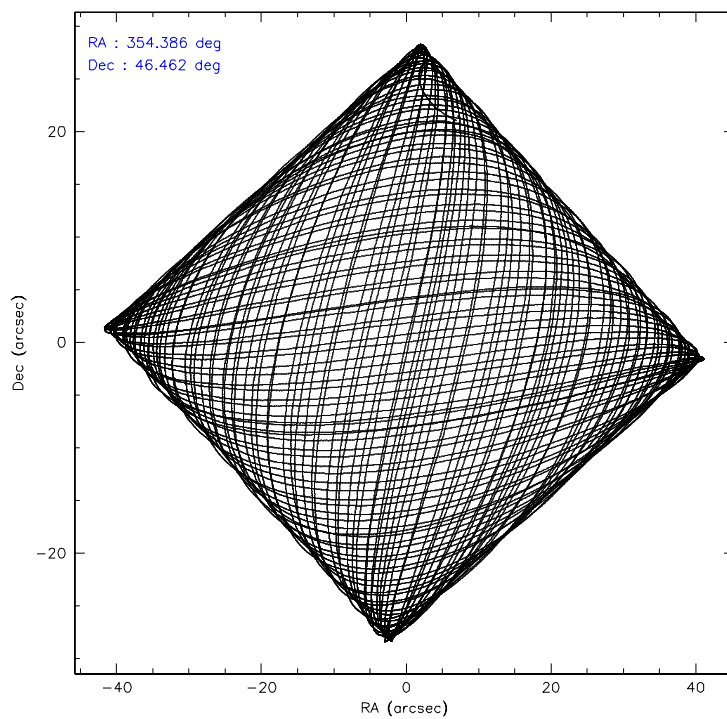
Level 1 Events

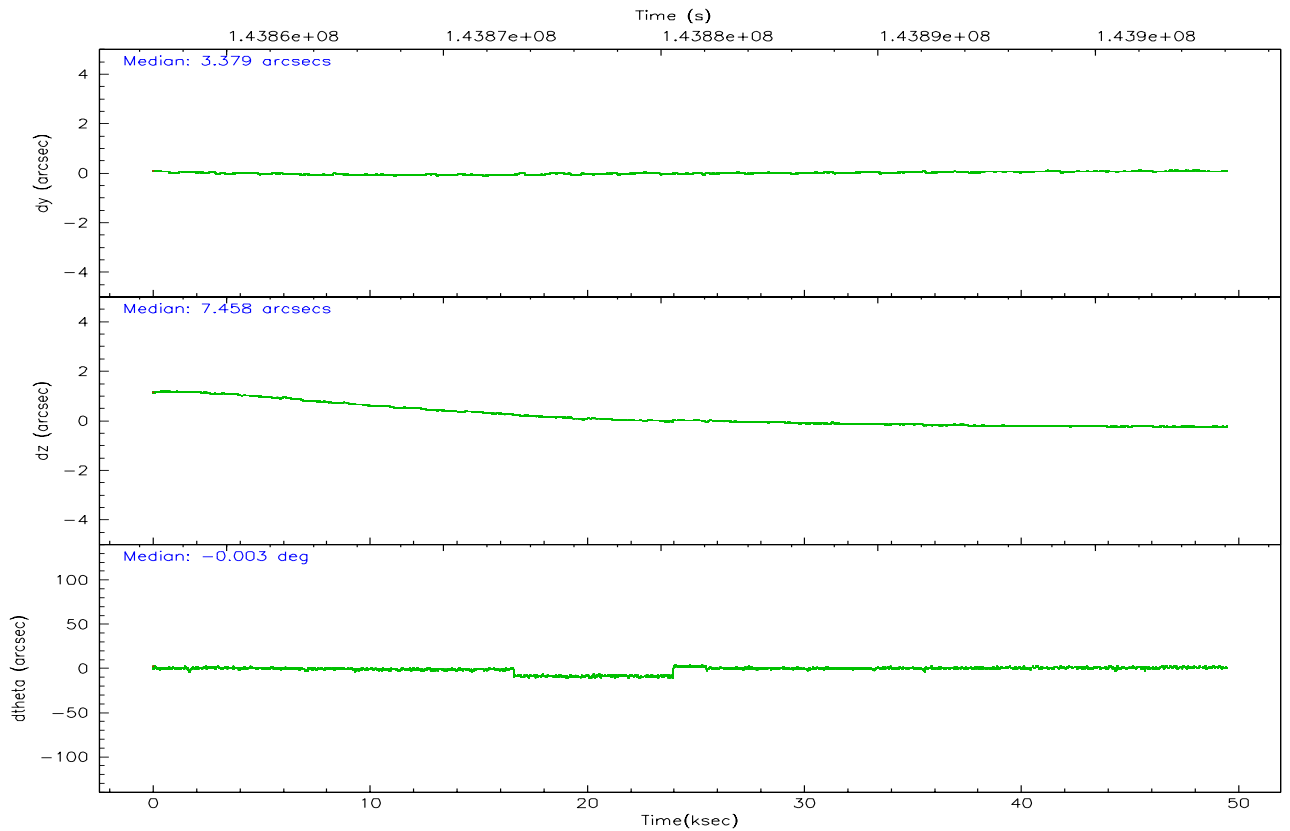
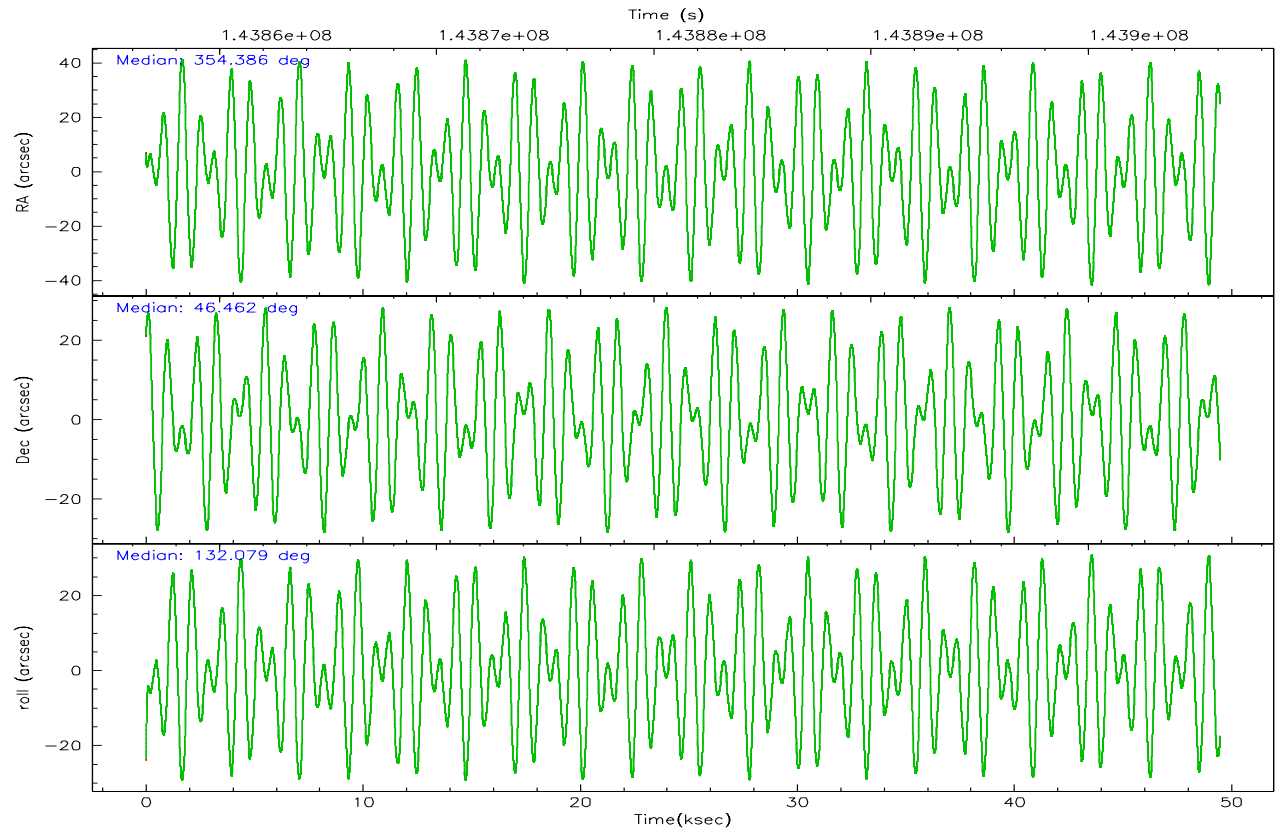
	segment 1	segment 2	segment 3
level 1 events	1203242	1378135	1198597
rejected events	229214	267926	282687
rejected %	19%	19%	23%

2.2 Compared Parameters

Parameter	Planned	Actual	Parameter	Planned	Actual
Instrument	HRC	HRC	Obspar format version number	6	6
Detector	HRC-S	HRC-S	Obspar file type	PREDICTED	ACTUAL
Grating	LETG	LETG	Obspar update status	NONE	UPDATED
Data mode	OBSERVING	OBSERVING			
Observation mode	POINTING	POINTING			
Pointing RA	354.426516	354.3864330950306			
Pointing Dec	46.454250	46.46173726938508			
Pointing Roll	131.982866	132.0792550193544			
SIM focus pos (mm)	-1.429586	-1.428180813131781			
SIM defocus (mm)	0.1037507710433287	0.1051558262725154			
SIM translation stage pos (mm)	250.455976	250.466033080201			
SIM translation stage offset (mm)	0	-0.01005468664627074			
Observation start time	143856784.184000	143855520.84054			
Observation start date	2002-07-24T00:12:00	2002-07-23T23:52:00			
Observation end time	143906084.184000	143907638.50518			
Observation end date	2002-07-24T13:53:40	2002-07-24T14:20:38			

2.3 Aspect



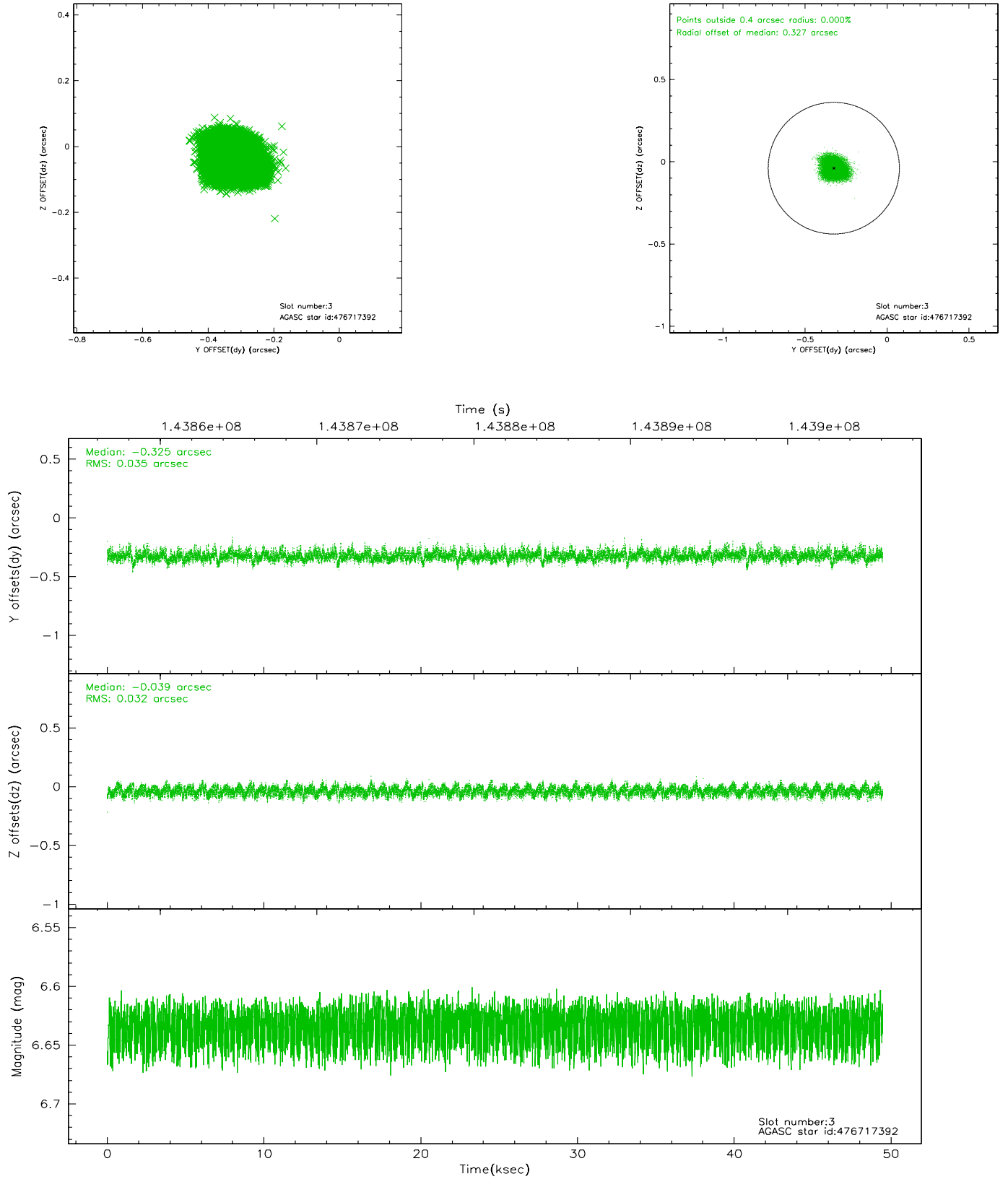


Slot Statistics

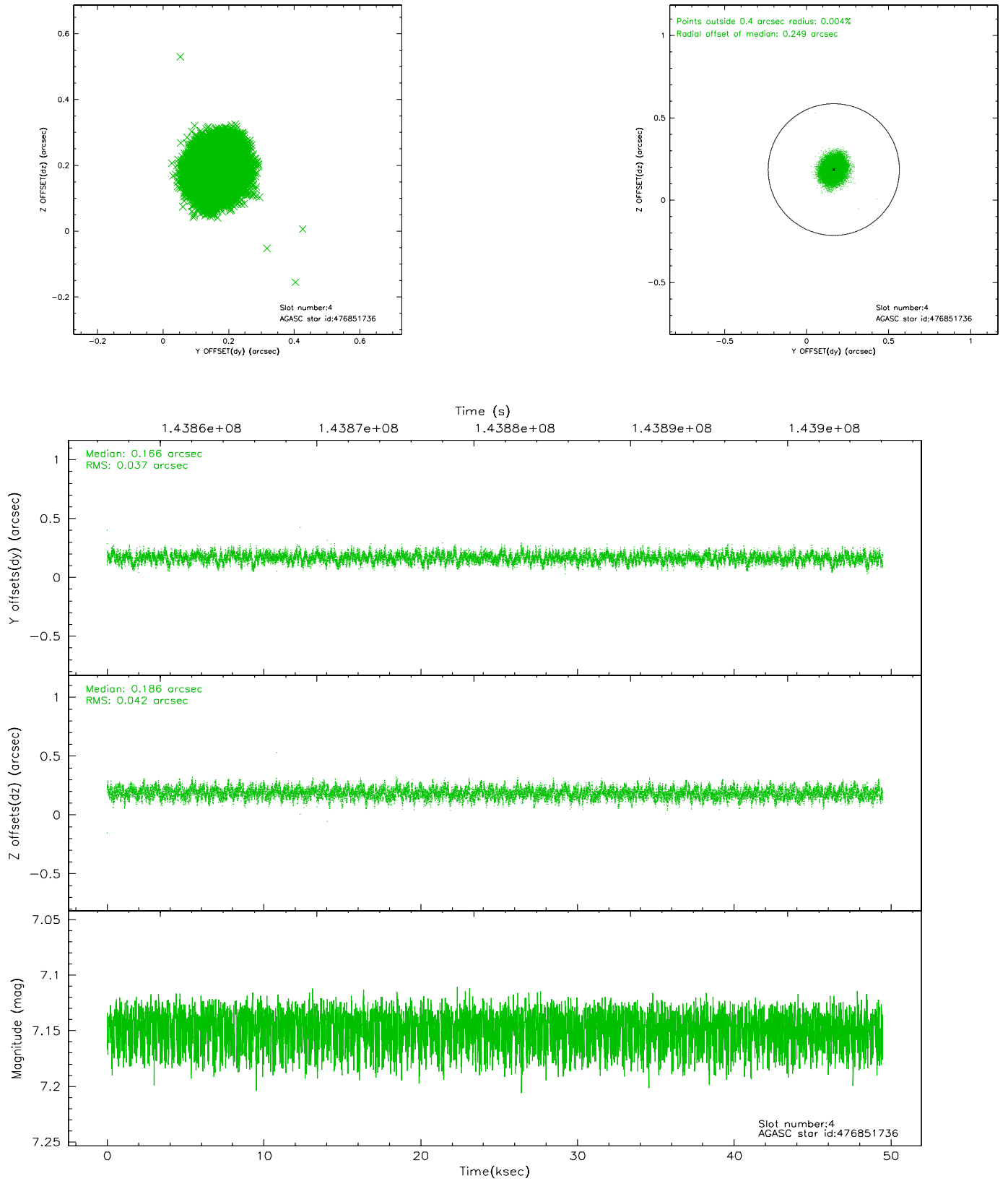
slot	status	id	mag	n_pts	med_dy	med_dz	dr1	dr2	ra	dec	mean_y	mean_z
0	FID	HRC-S-2	6.98	12069	0.080	-0.035	0.014	0.095	0.000000	0.000000	1242.19	-448.79
1	FID	HRC-S-3	7.00	12069	0.133	-0.122	0.012	0.036	0.000000	0.000000	-1160.04	573.29
2	FID	HRC-S-4	6.96	12068	0.194	-0.139	0.019	0.102	0.000000	0.000000	1240.79	575.91
3	GUIDE	476717392	6.63	24137	-0.325	-0.039	0.050	0.084	353.455117	46.680994	2221.22	1227.84
4	GUIDE	476851736	7.15	24137	0.166	0.186	0.060	0.096	355.272674	46.218265	-2033.48	-1005.22
5	GUIDE	476718520	7.42	24138	-0.306	-0.004	0.047	0.076	353.709867	46.860116	2270.81	328.95
6	GUIDE	476709736	8.51	24134	0.218	-0.125	0.079	0.125	354.343069	45.728505	-1802.44	1903.68
7	GUIDE	476848200	8.91	24126	0.247	-0.018	0.068	0.114	354.898689	46.018108	-1954.85	170.78

2.4 Star Slots

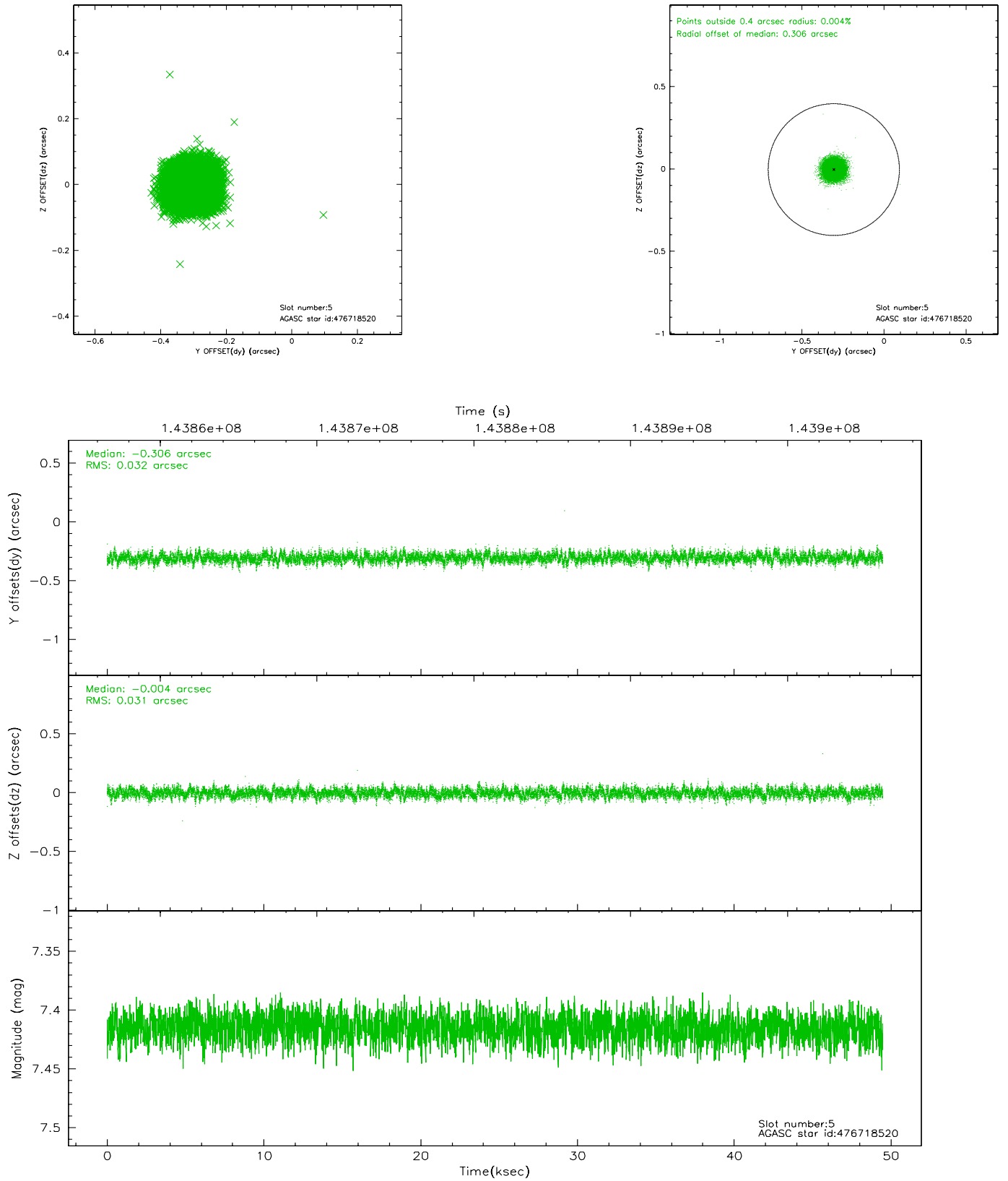
2.4.1 Slot 3



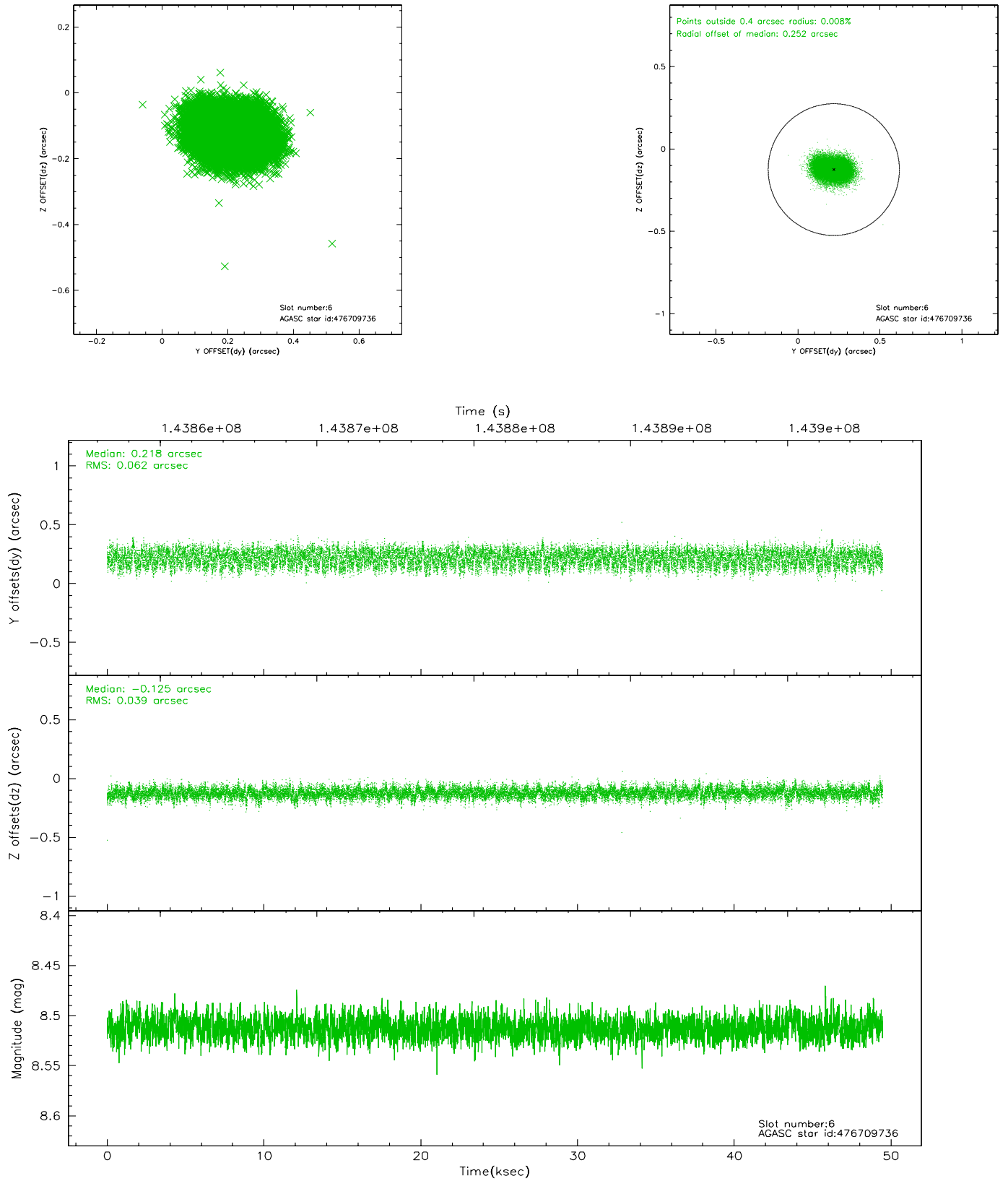
2.4.2 Slot 4



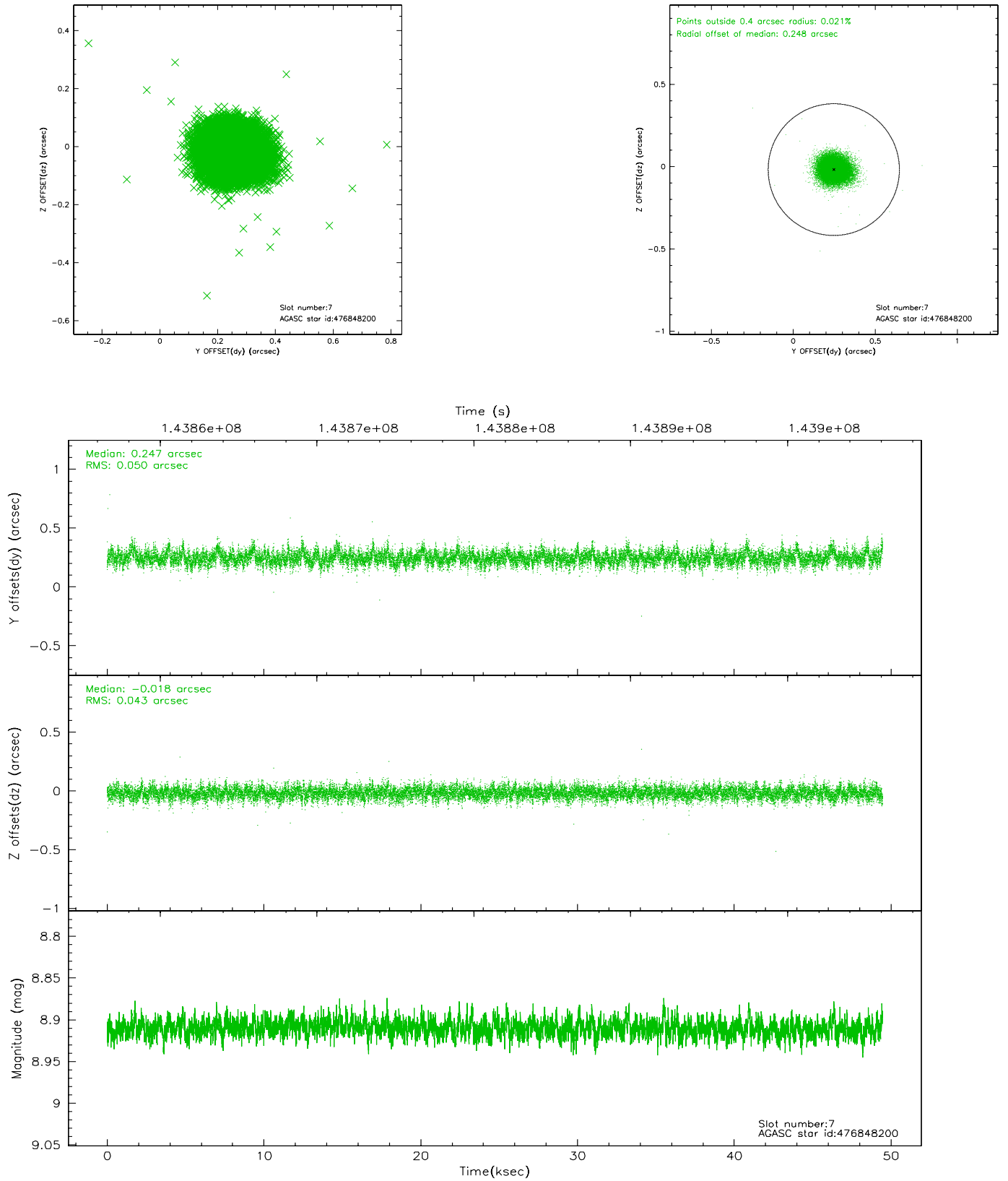
2.4.3 Slot 5



2.4.4 Slot 6

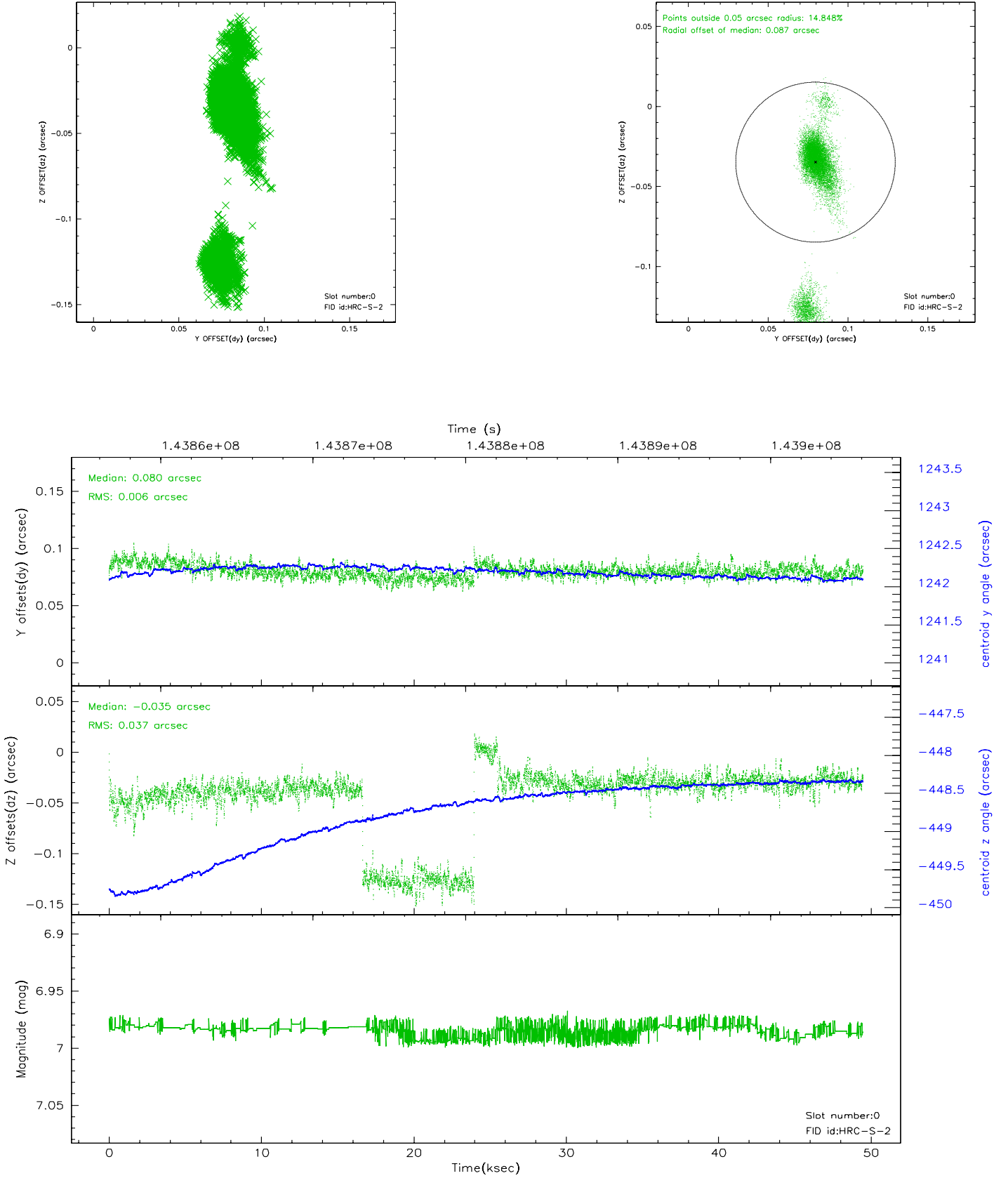


2.4.5 Slot 7

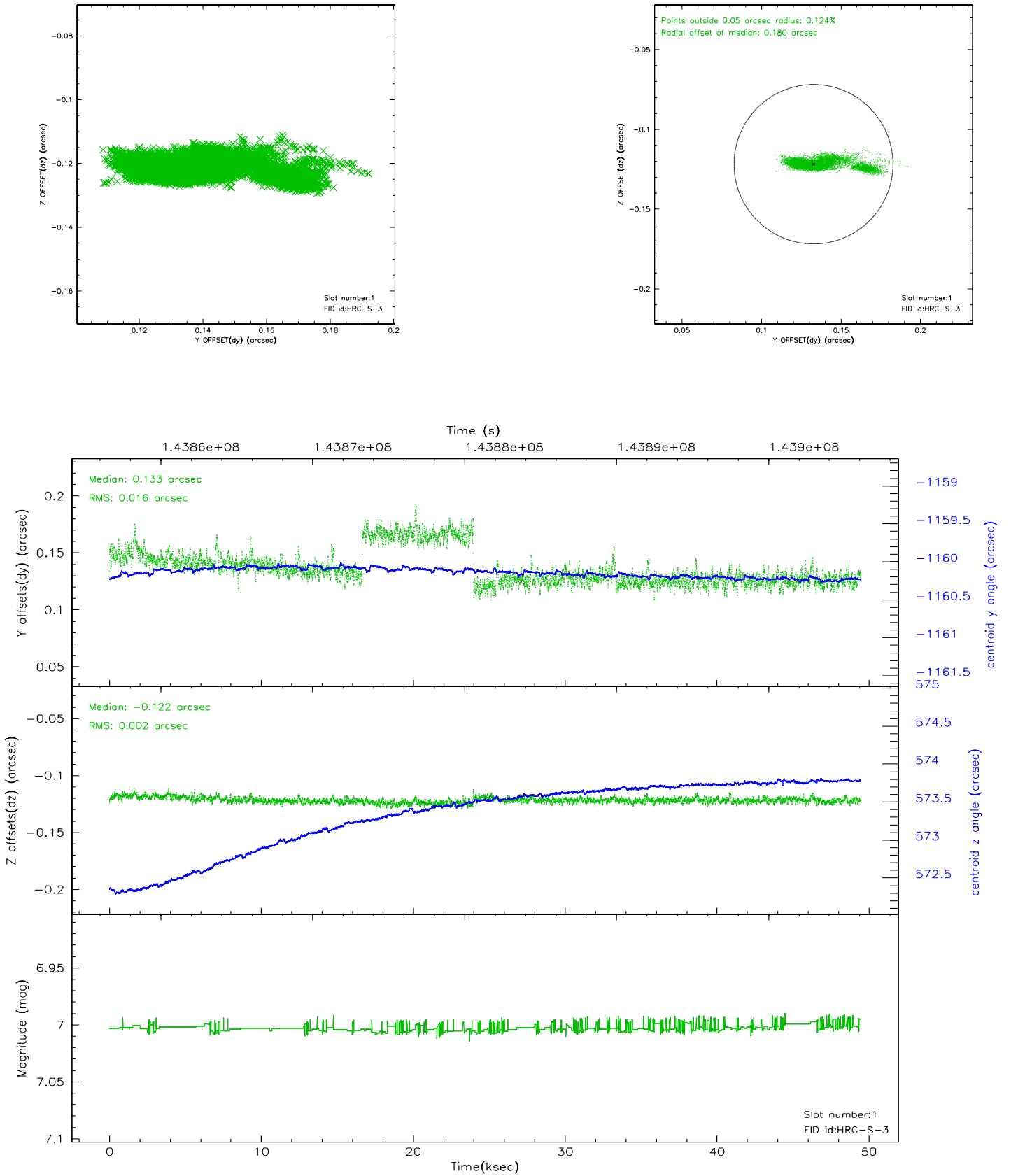


2.5 FID Slots

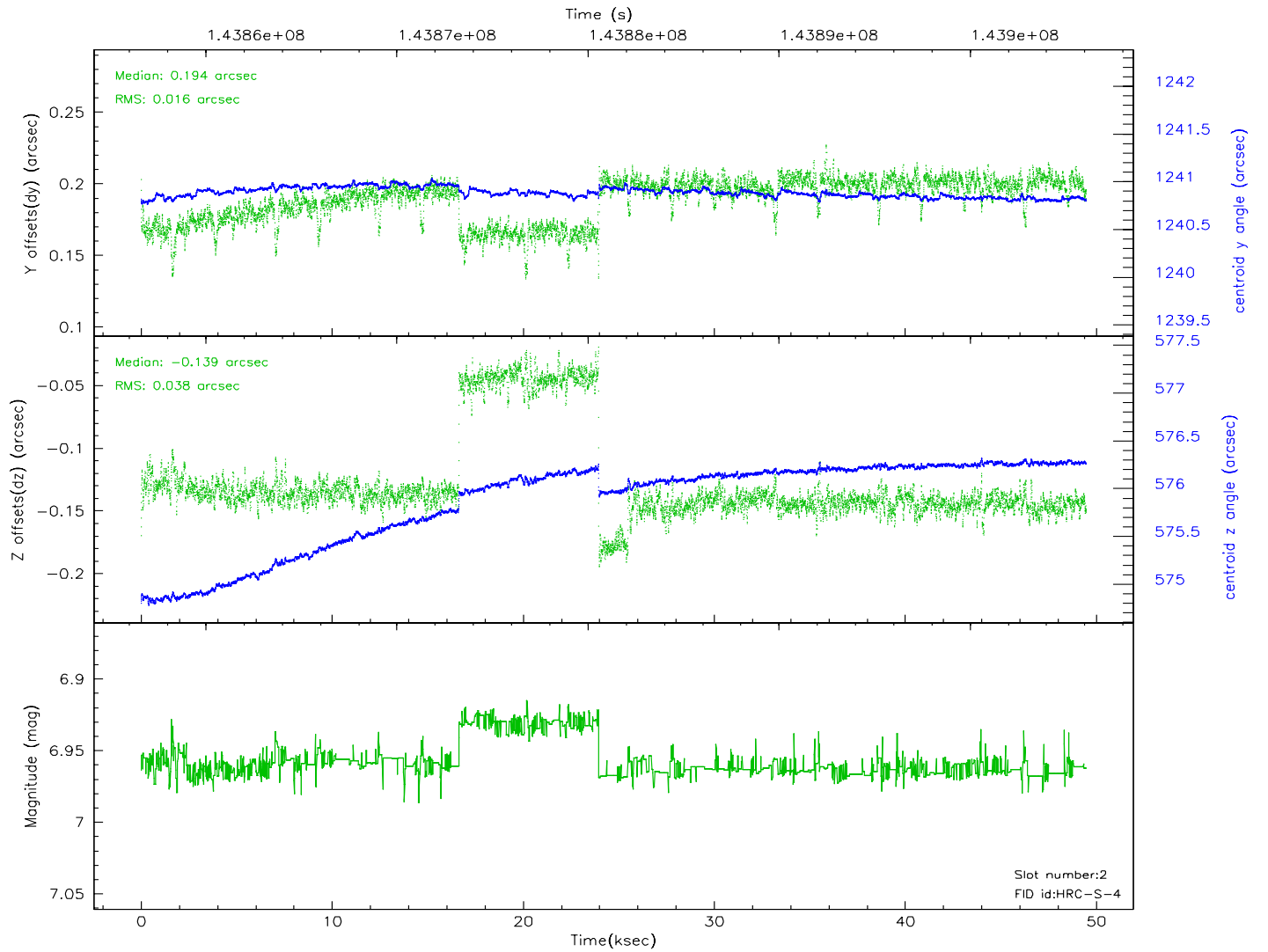
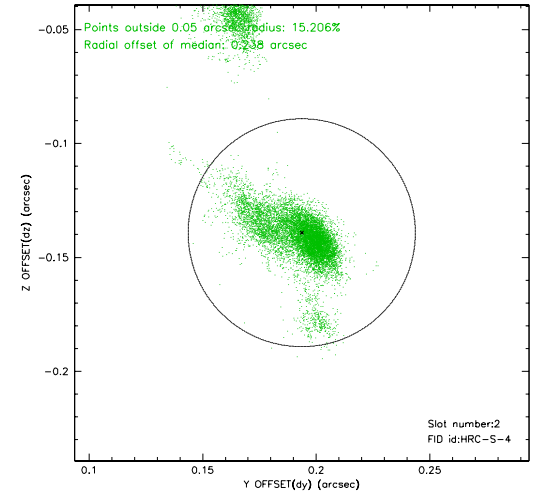
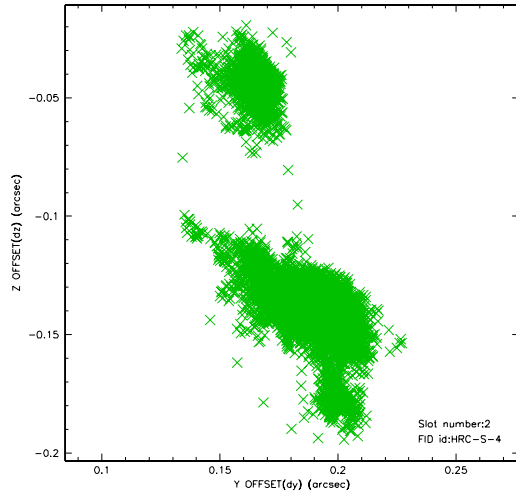
2.5.1 Slot 0



2.5.2 Slot 1

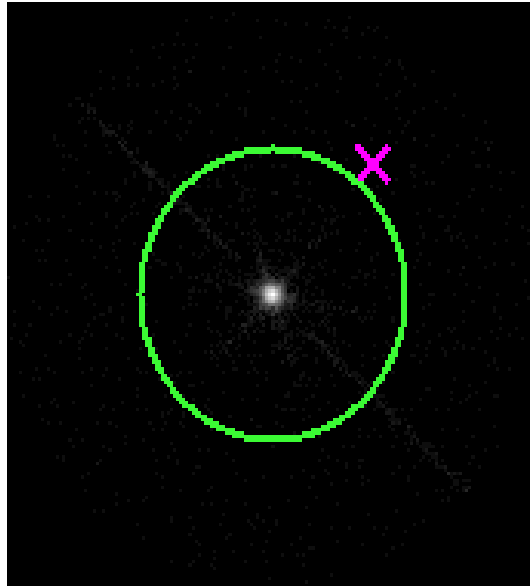


2.5.3 Slot 2



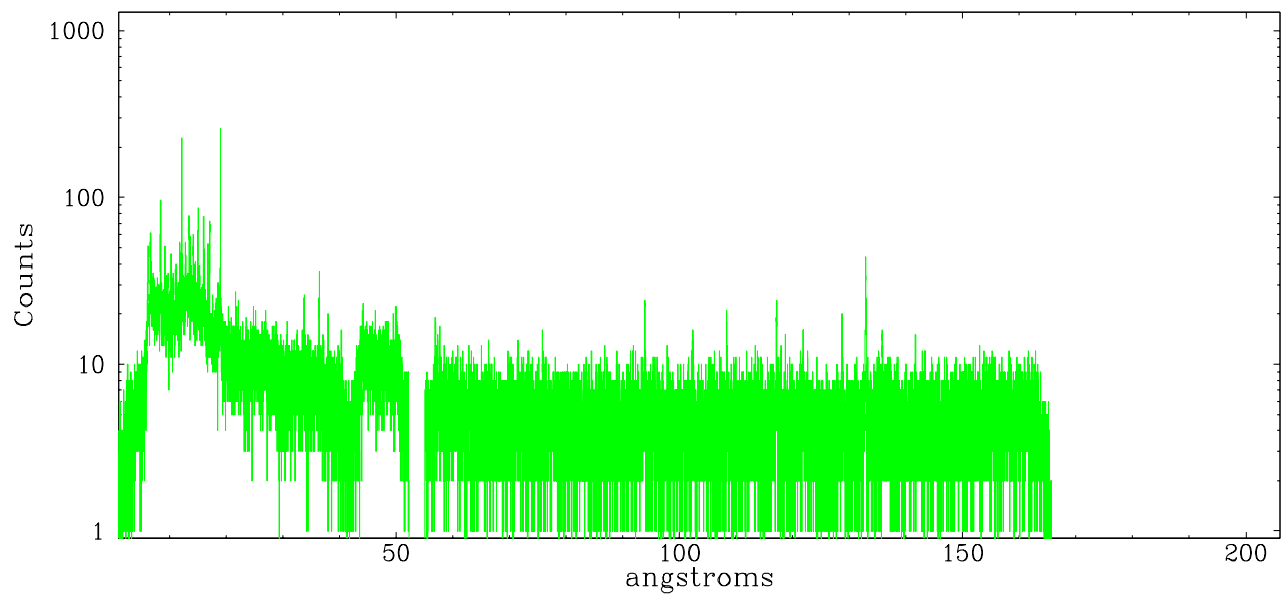
3 Gratings

3.1 LETG Arm

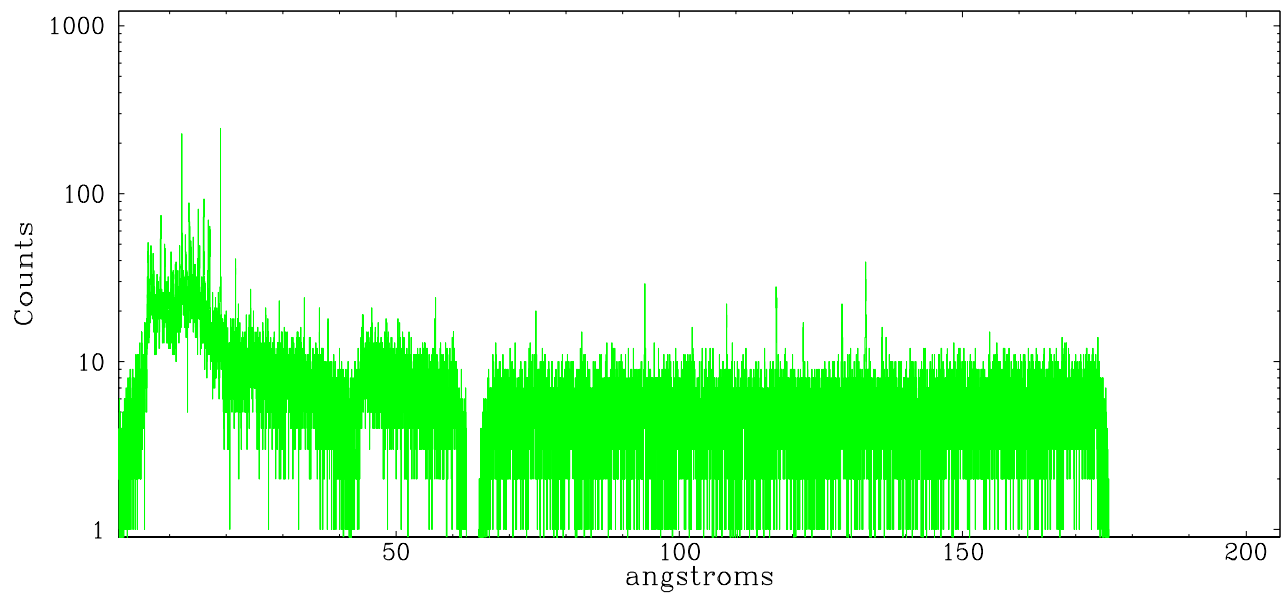


LETG Zero Order

leg order -1



leg order +1



A Summary

A.1 Status

V&V Scientist	Beth Sundheim
V&V Date (YYYY-MM-DD)	2006.09.26
V&V Edition	1
V&V Disposition and Status	OK
V&V Charge Time	49.154

A.2 Comments

There is a brief (~8 ksec) discontinuity in the fid lights.