

V&V Reference Report

L2 ASCDS Version : 7.6.9

Observation 3672 - L2 Version 001
Chandra X-Ray Center

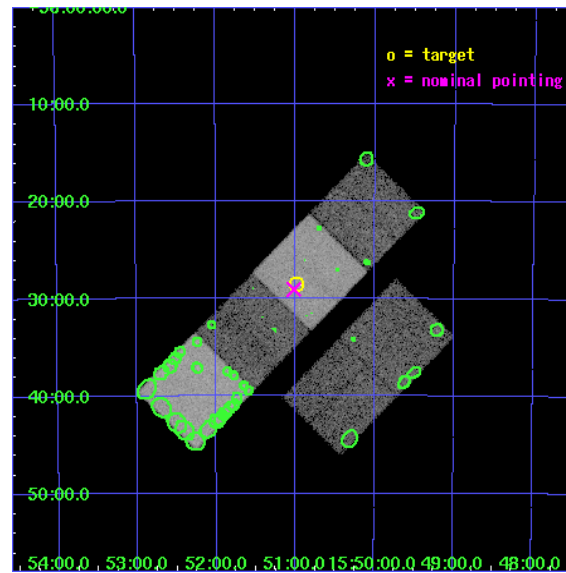
L2 Processing Date : Sep 19 2006

Contents

1	Front	2
2	OBI	3
2.1	OBI	3
2.1.1	Images	3
2.1.2	Bias	3
2.1.3	Parameters	4
2.1.4	Events	4
2.2	Compared Parameters	5
2.3	Aspect	6
2.4	Star Slots	9
2.4.1	Slot 3	9
2.4.2	Slot 4	10
2.4.3	Slot 5	11
2.4.4	Slot 6	12
2.4.5	Slot 7	13
2.5	FID Slots	14
2.5.1	Slot 0	14
2.5.2	Slot 1	15
2.5.3	Slot 2	16
3	Point Sources	17
A	Summary	18
A.1	Status	18
A.2	Comments	18

1 Front

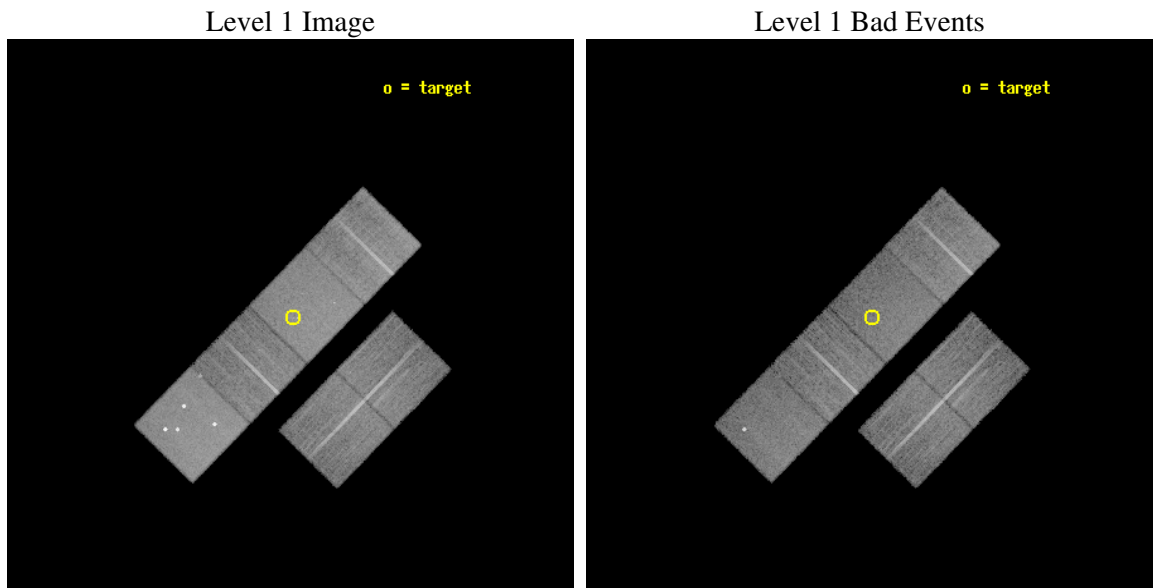
seq_num	400268
obs_id	3672
title	FURTHER IMAGING OF THE JETS OF THE BLACK HOLE XTEJ1550-564
observer	Dr Stephane Corbel
object	XTE J1550-564
dtcycle	0
cycle	P
ra_targ	237.744583
dec_targ	-56.476556
ra_nom	237.75445329873
dec_nom	-56.48459989179
roll_nom	314.2251535493
revision	2
ontime	18255.999931991
livetime	18024.831468409
ontime2	18252.758951694
ontime3	18255.999931991
ontime5	18255.999931991
ontime6	18255.999931991
ontime7	18255.999931991
ontime8	18252.759081334
l2events	179231



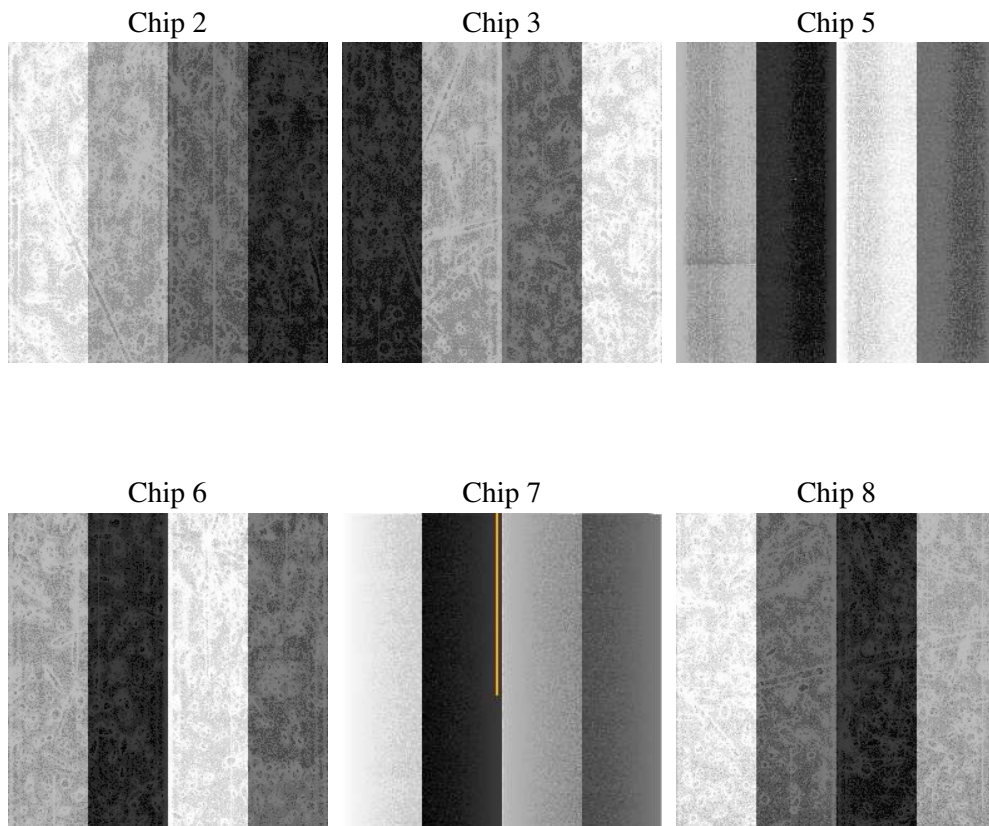
2 OBI

2.1 OBI

2.1.1 Images



2.1.2 Bias



2.1.3 Parameters

obi_num	0
ascdsver	7.6.9
caldsver	3.2.3
date	2006-09-19T18:56:24
revision	2

sched_exp_time	18500.000000
ontime	18259.824067295
ontime2	18256.58309707
ontime3	18259.824077368
ontime5	18259.824047416
ontime6	18259.824077368
ontime7	18259.824067295
ontime8	18256.583107114
l1events	832754

2.1.4 Events

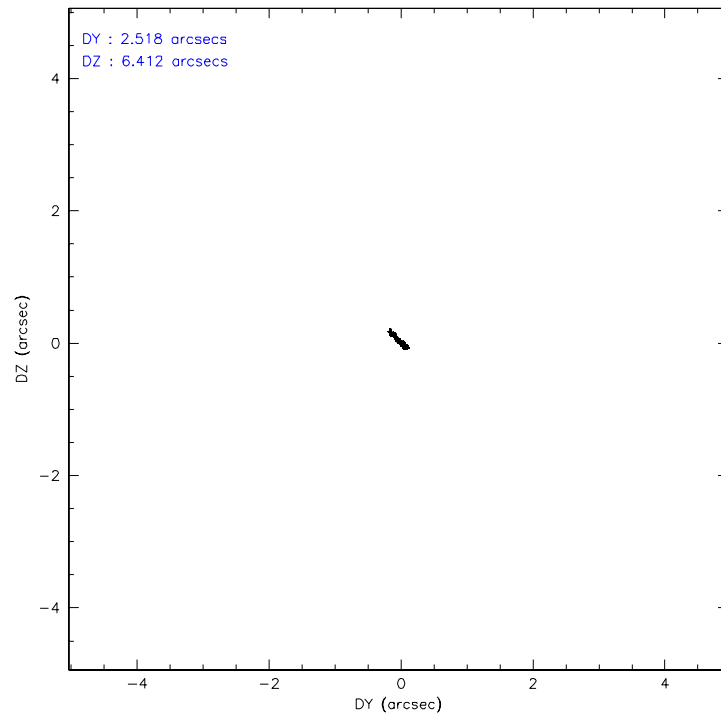
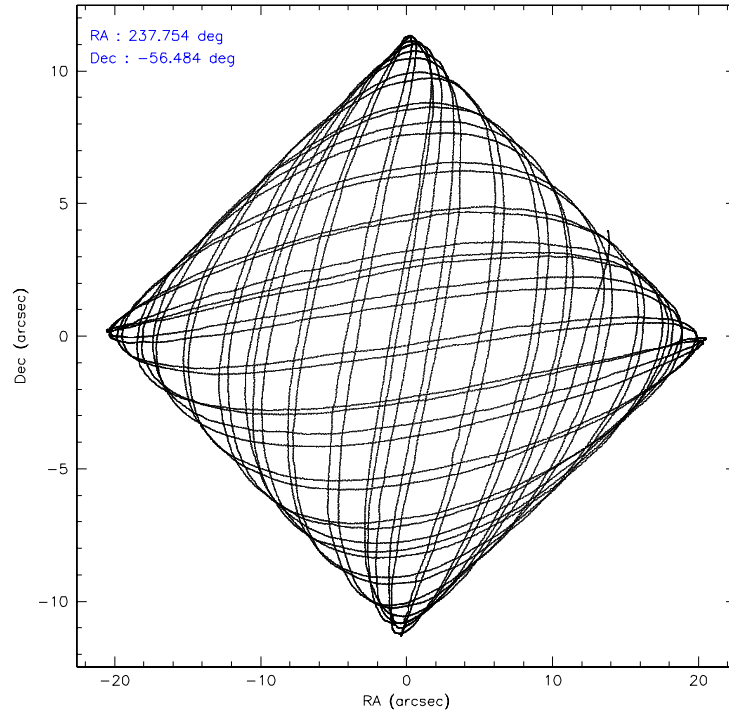
	ccd 2	ccd 3	ccd 5	ccd 6	ccd 7	ccd 8
level 1 events	118645	113434	179260	118604	153753	149058
rejected events	104793	99589	95459	103752	94001	119148
rejected %	88%	87%	53%	87%	61%	79%

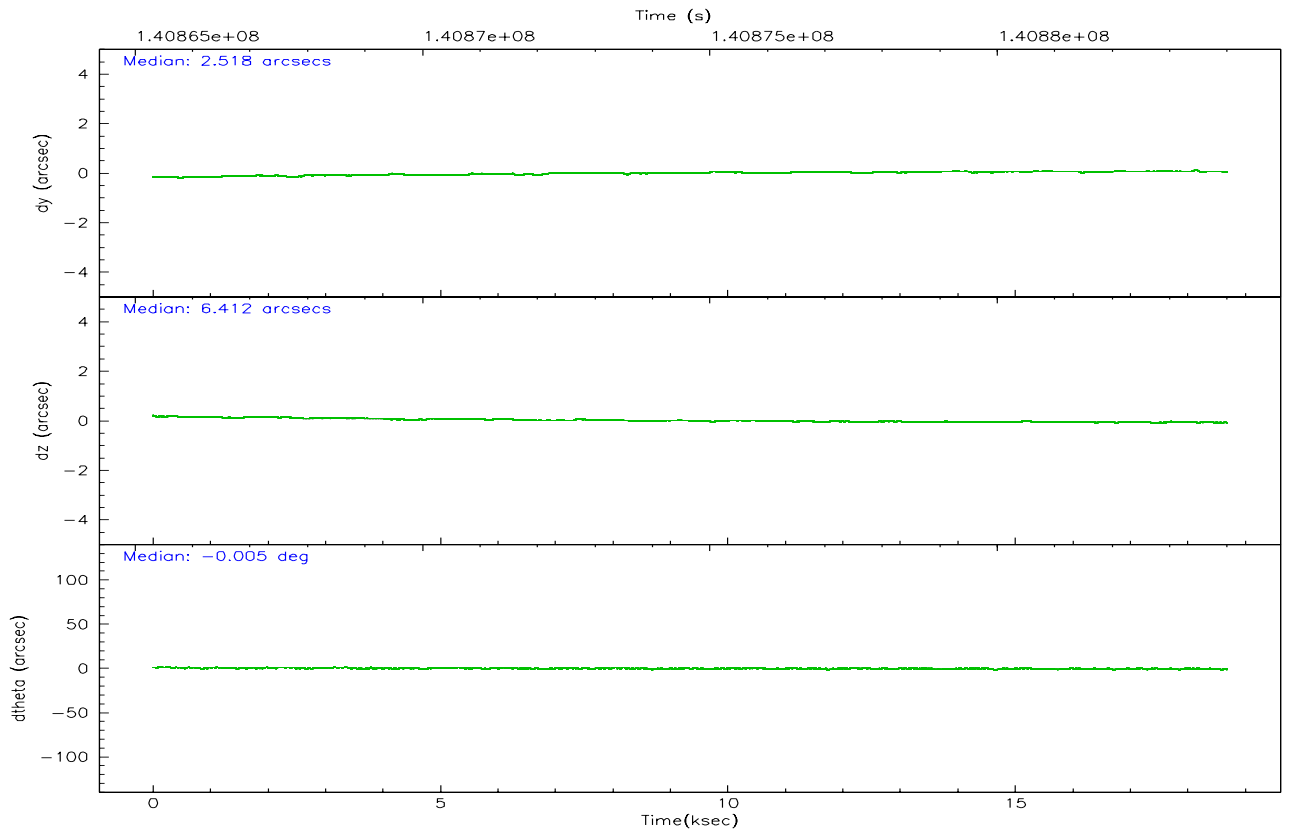
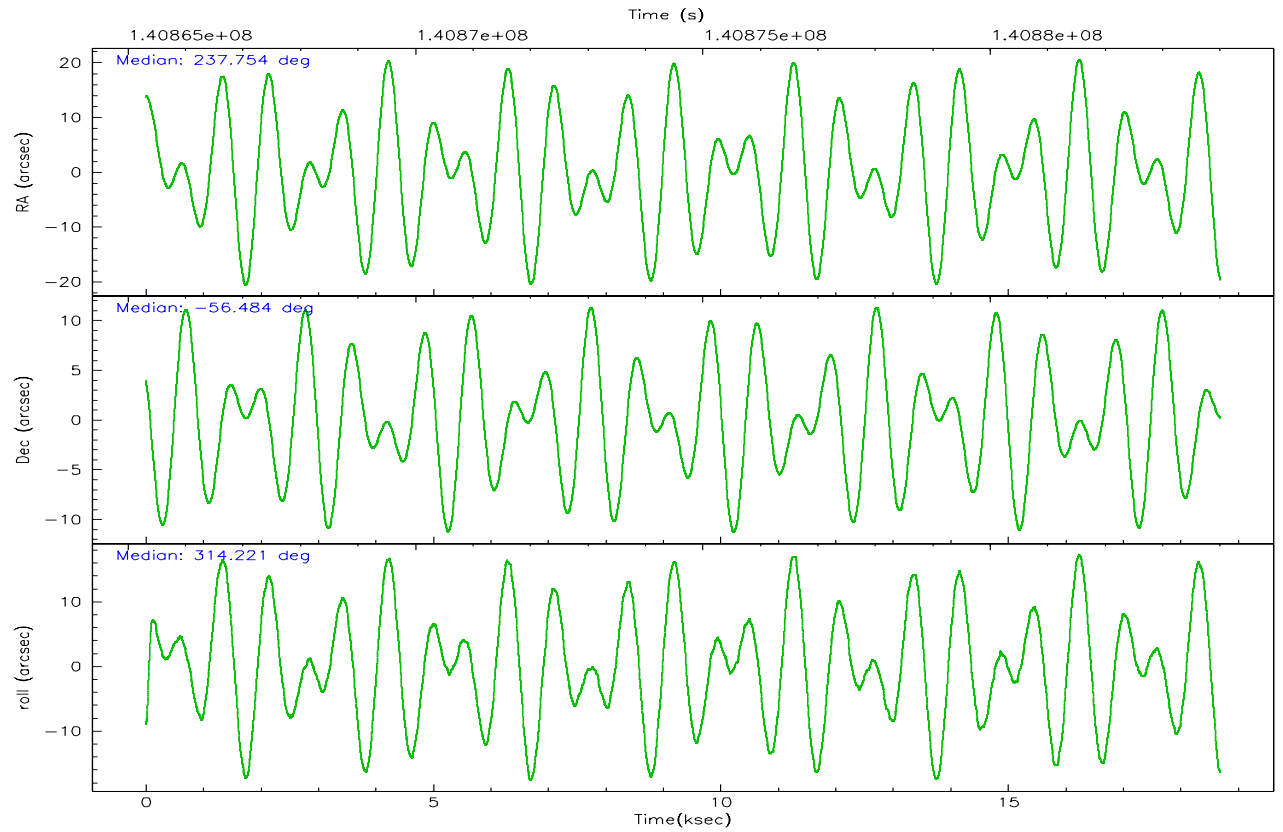
	ccd 2	ccd 3	ccd 5	ccd 6	ccd 7	ccd 8
grade 0 events	6198	6115	13596	6612	3952	9693
	5%	5%	7%	5%	2%	6%
grade 1 events	61	54	156	63	79	88
	0%	0%	0%	0%	0%	0%
grade 2 events	2919	2786	24576	2906	14626	6478
	2%	2%	13%	2%	9%	4%
grade 3 events	1207	1259	1831	1393	3158	3075
	1%	1%	1%	1%	2%	2%
grade 4 events	1207	1271	1699	1347	3089	2893
	1%	1%	0%	1%	2%	1%
grade 5 events	4200	4580	8506	5009	10173	6361
	3%	4%	4%	4%	6%	4%
grade 6 events	2322	2416	42106	2599	34939	7776
	1%	2%	23%	2%	22%	5%
grade 7 events	100531	94953	86790	98675	83737	112694
	84%	83%	48%	83%	54%	75%

2.2 Compared Parameters

Parameter	Planned	Actual	Parameter	Planned	Actual
Instrument	ACIS	ACIS	Obspar format version number	6	6
Detector	ACIS-235678	ACIS-235678	Obspar file type	PREDICTED	ACTUAL
Grating	NONE	NONE	Obspar update status	NONE	UPDATED
Data mode	FAINT	FAINT	Number of optional ACIS chips dropped	0	0
Observation mode	POINTING	POINTING	On-chip summing requested	N	N
Pointing RA	237.706774	237.75445329873	Subarray requested	NONE	NONE
Pointing Dec	-56.477497	-56.4845998917899	Alternating exposures requested	N	N
Pointing Roll	314.028772	314.2251535493049	Primary exposure time	0.000000	3.2
SIM focus pos (mm)	-0.684267	-0.6828225247311905			
SIM defocus (mm)	0	0.001444936568705701			
SIM translation stage pos (mm)	-190.132523	-190.1400660498719			
SIM translation stage offset (mm)	0	0.00754346686406393			
Observation start time	140865498.184000	140864798.26783			
Observation start date	2002-06-19T09:17:14	2002-06-19T09:06:38			
Observation end time	140883998.184000	140884603.31864			
Observation end date	2002-06-19T14:25:34	2002-06-19T14:36:43			
Read mode	TIMED	TIMED			

2.3 Aspect



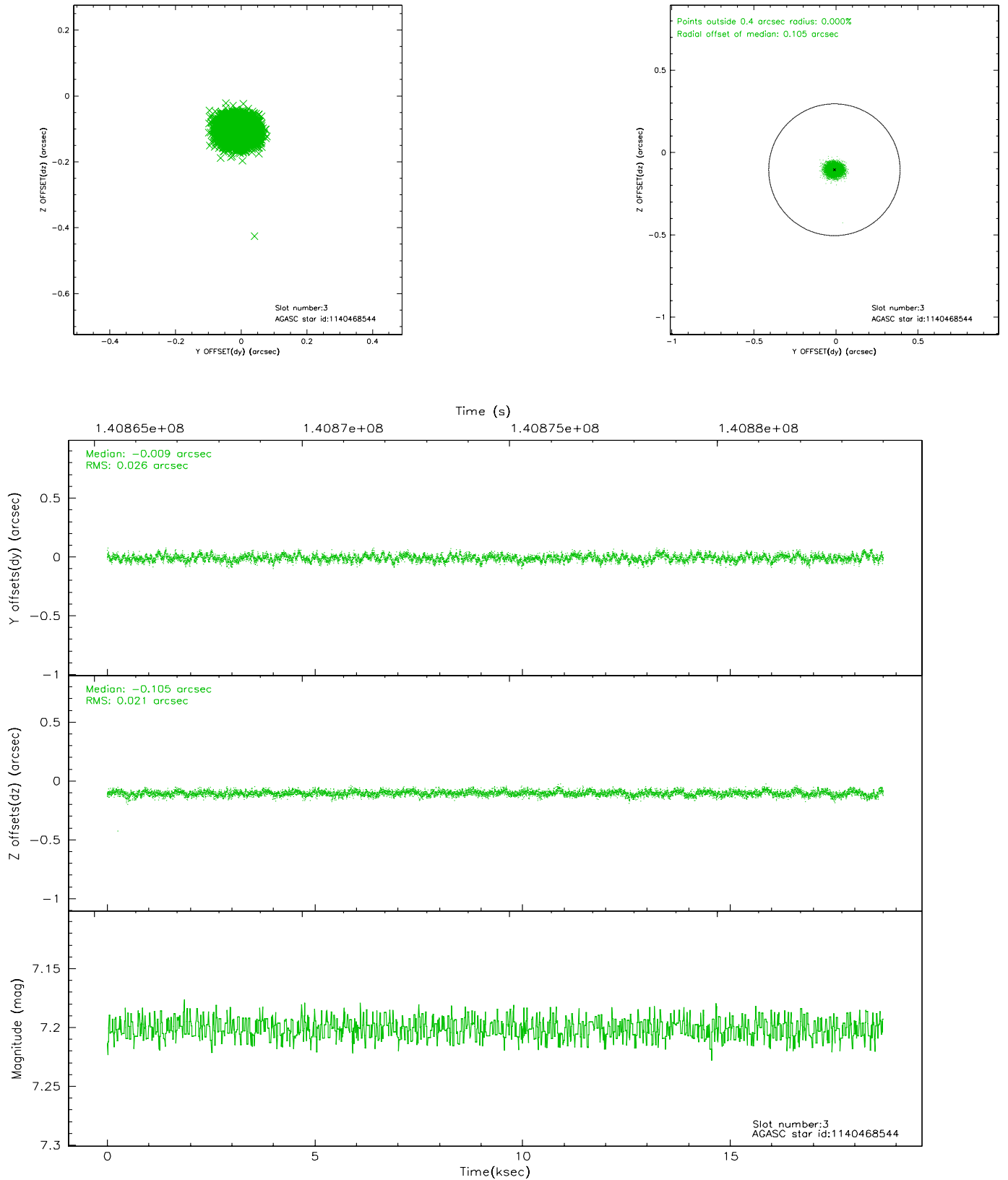


Slot Statistics

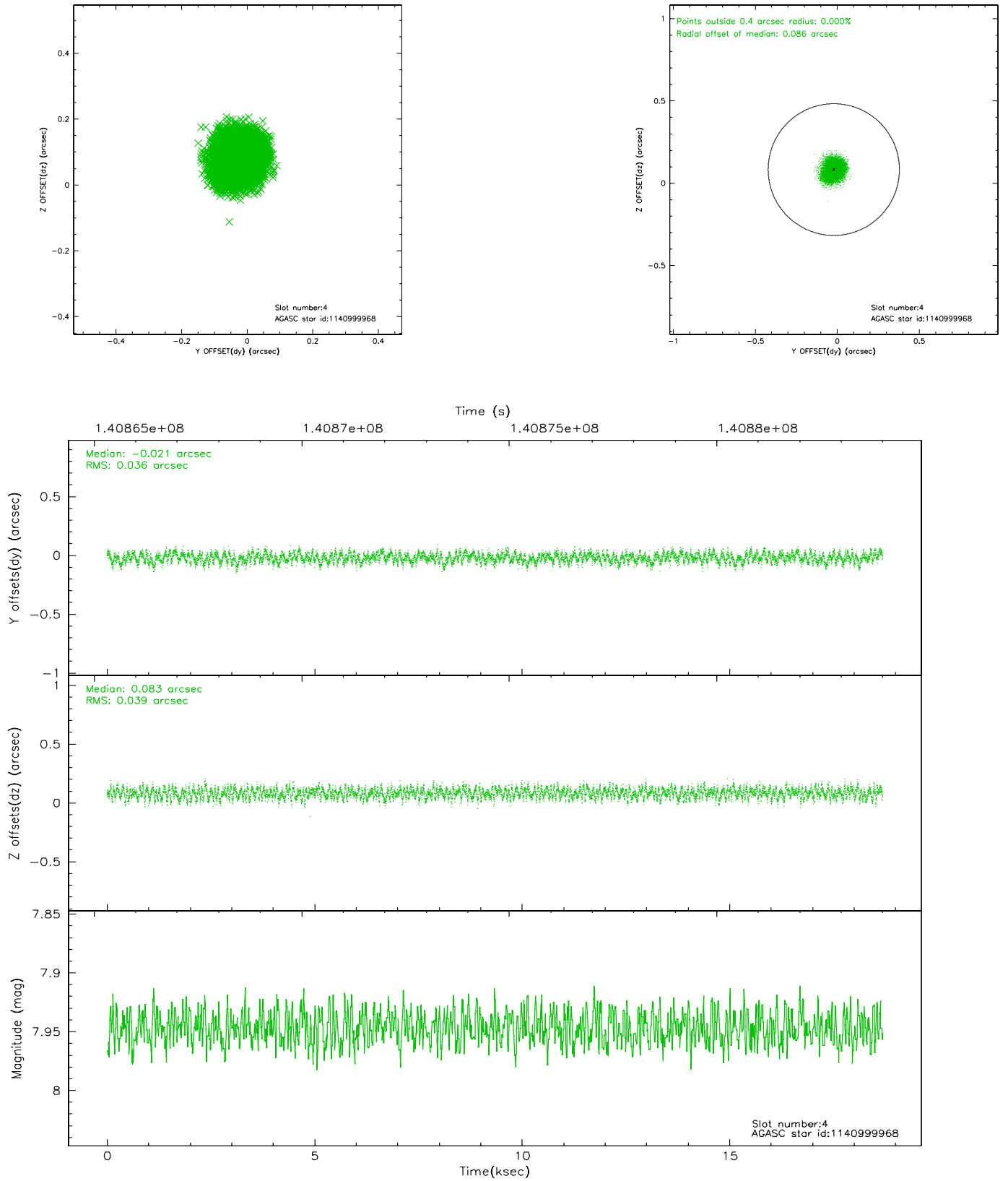
slot	status	id	mag	n_pts	med_dy	med_dz	dr1	dr2	ra	dec	mean_y	mean_z
0	FID	ACIS-S-2	7.12	4558	-0.020	0.036	0.008	0.013	0.000000	0.000000	-755.12	-1727.56
1	FID	ACIS-S-4	7.21	4559	-0.075	0.000	0.008	0.015	0.000000	0.000000	2157.97	180.72
2	FID	ACIS-S-5	7.23	4559	0.064	-0.027	0.008	0.013	0.000000	0.000000	-1807.64	174.54
3	GUIDE	1140468544	7.20	9117	-0.009	-0.105	0.036	0.058	237.524626	-55.920475	-1696.24	1129.27
4	GUIDE	1140999968	7.95	9117	-0.021	0.083	0.058	0.089	238.471952	-56.275988	547.83	1598.26
5	GUIDE	1141004216	8.13	9115	0.010	0.025	0.071	0.114	237.245988	-56.471011	-650.60	-644.31
6	GUIDE	1140861088	9.06	9115	0.011	0.066	0.078	0.124	236.443591	-56.463656	-1764.54	-1787.53
7	GUIDE	1140998784	9.21	9113	0.012	-0.066	0.079	0.130	238.683224	-56.839204	2282.87	468.11

2.4 Star Slots

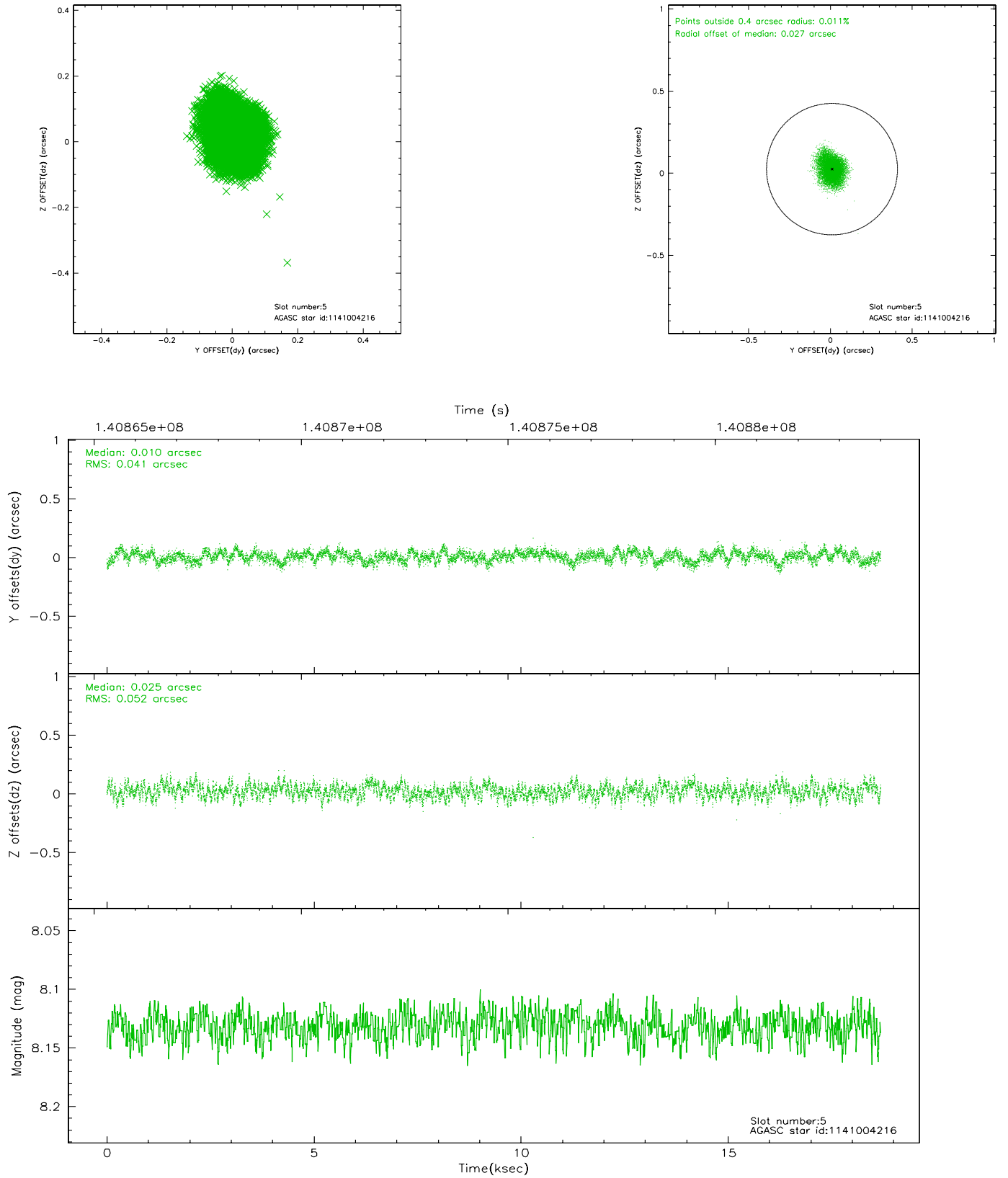
2.4.1 Slot 3



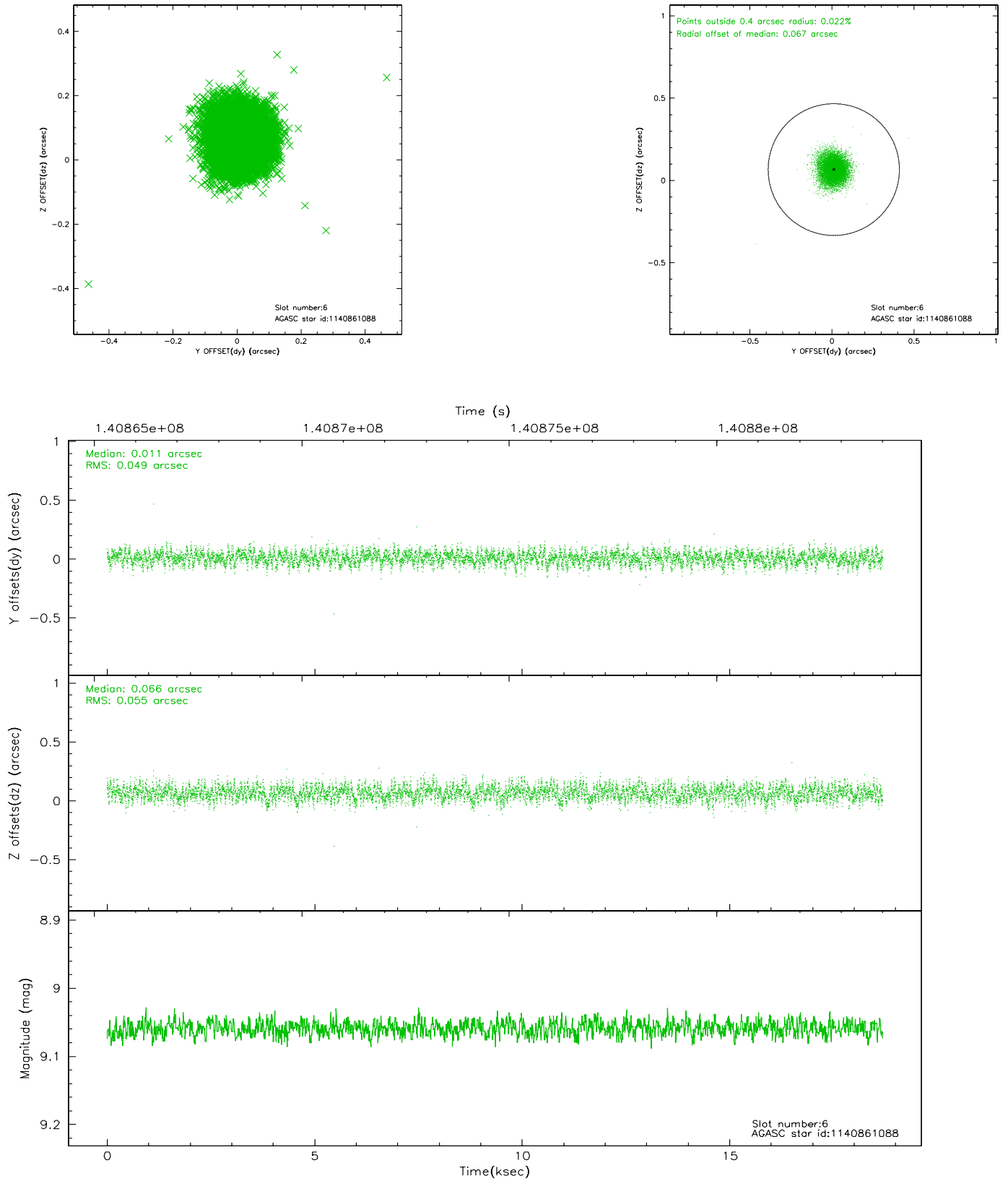
2.4.2 Slot 4



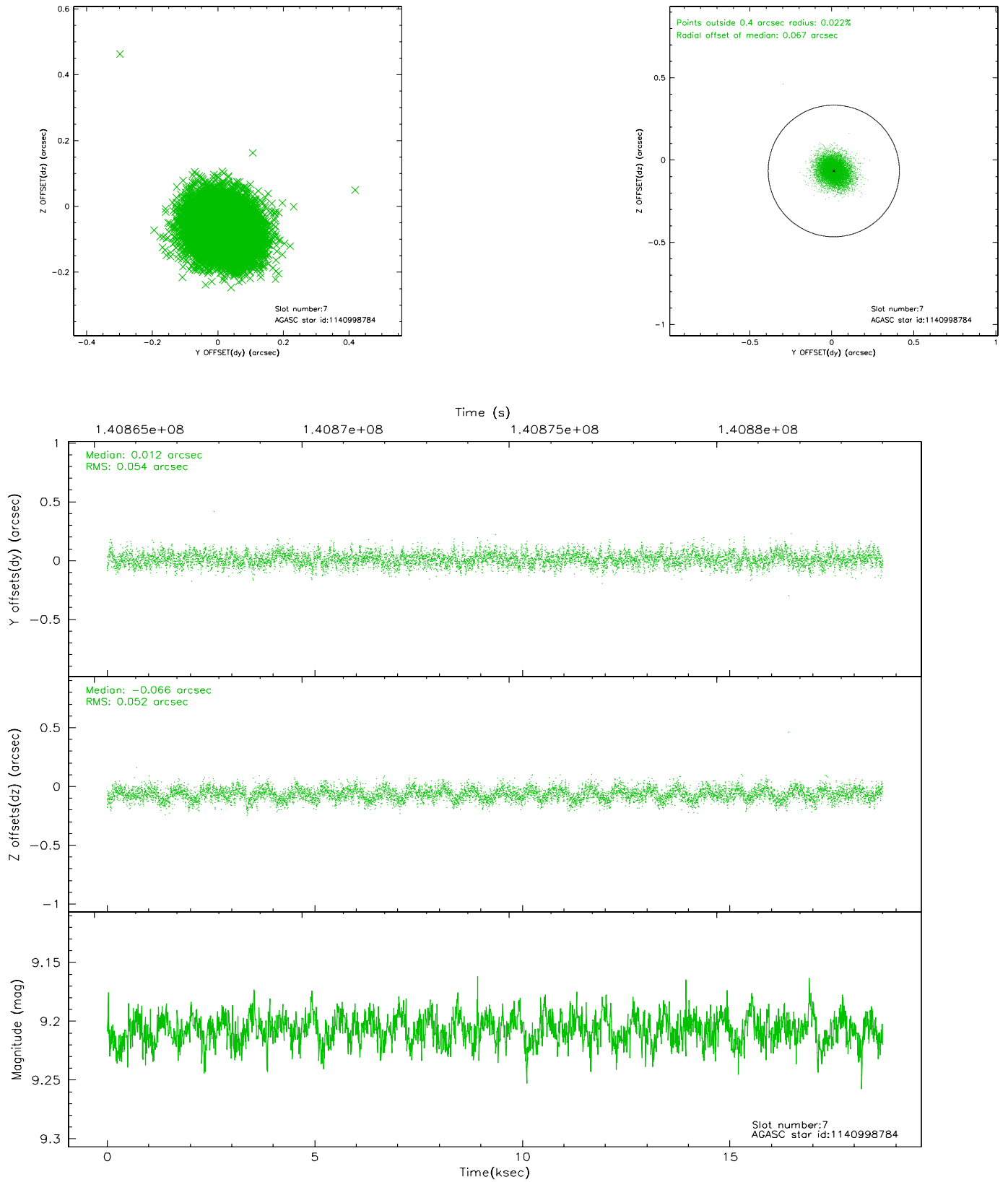
2.4.3 Slot 5



2.4.4 Slot 6

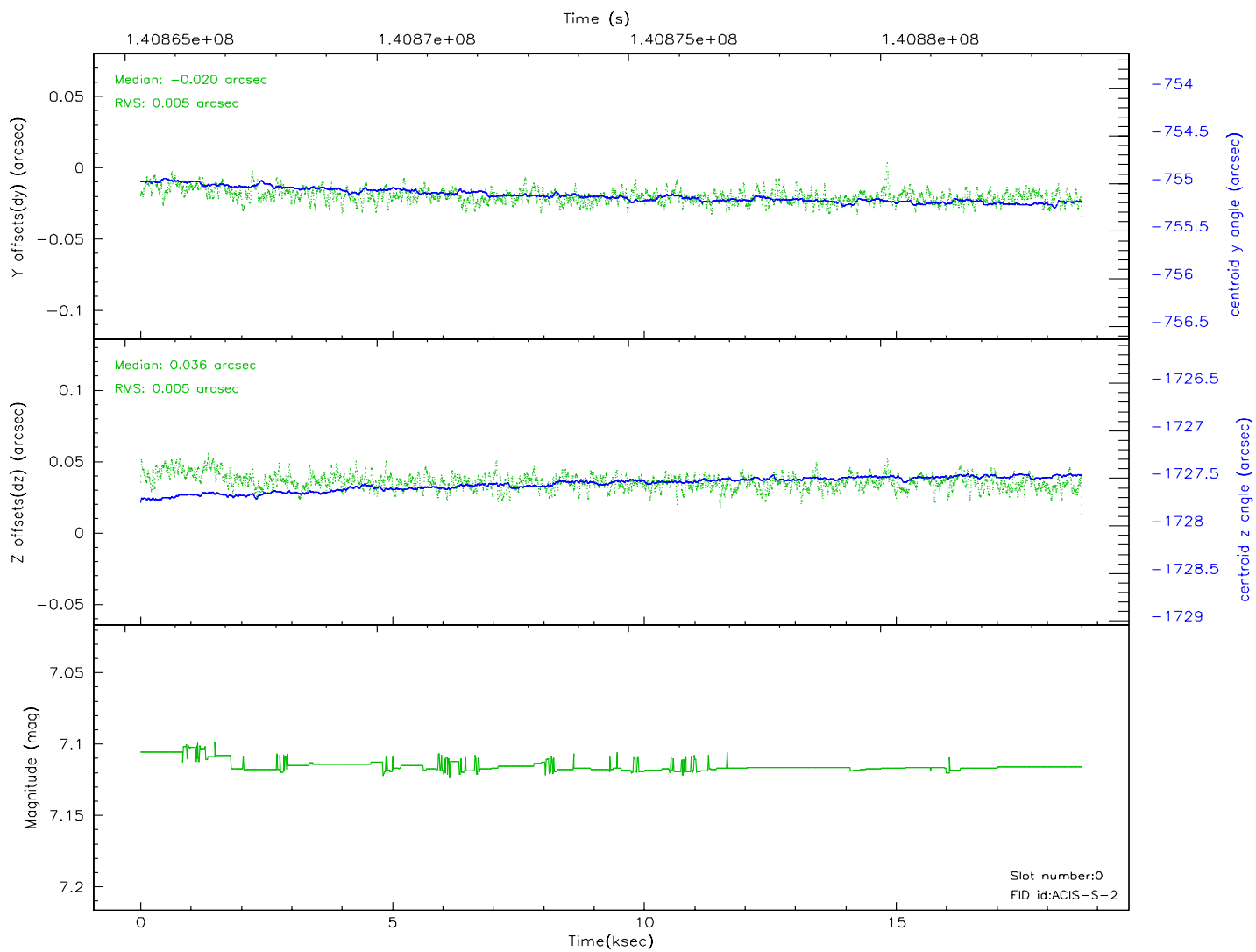
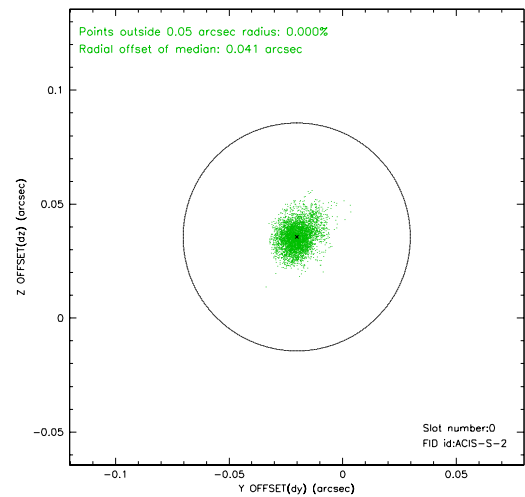
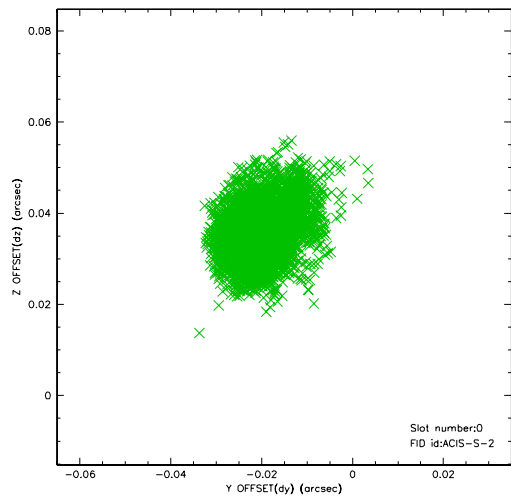


2.4.5 Slot 7

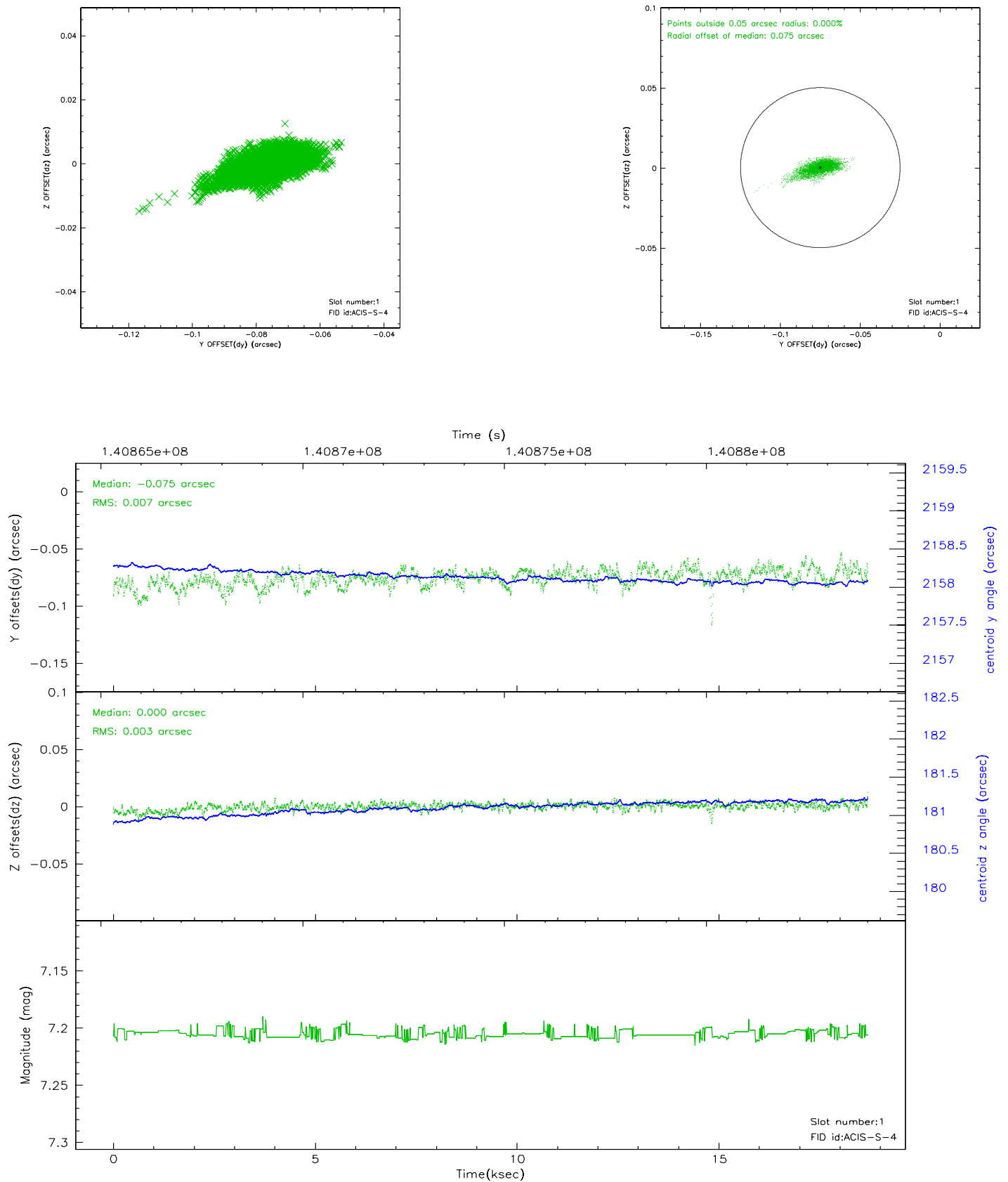


2.5 FID Slots

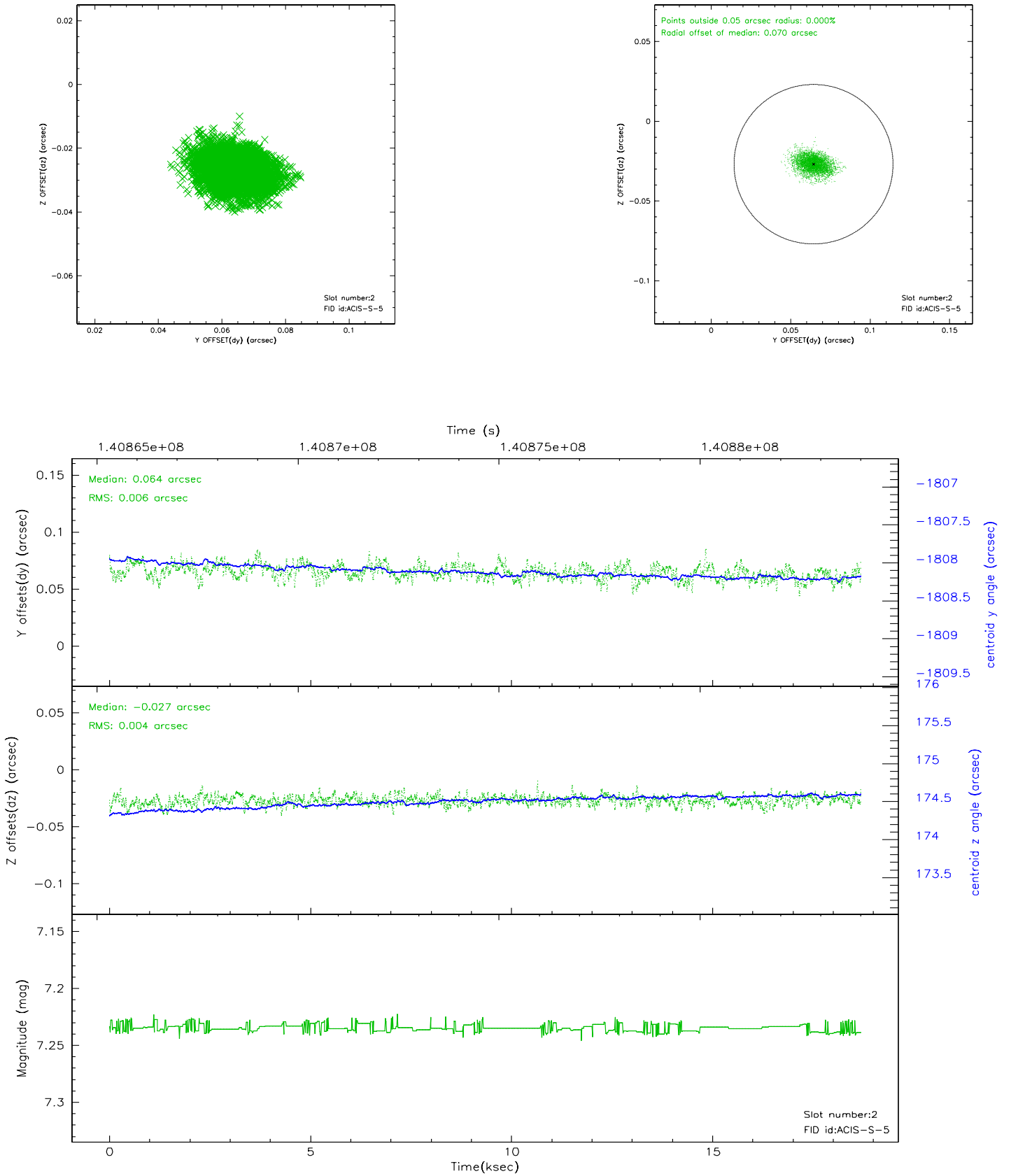
2.5.1 Slot 0



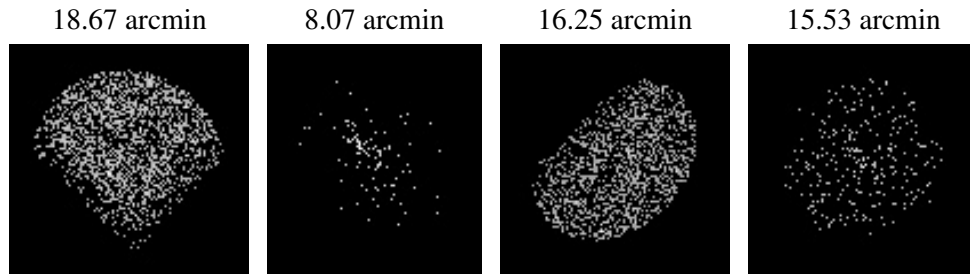
2.5.2 Slot 1



2.5.3 Slot 2



3 Point Sources



A Summary

A.1 Status

V&V Scientist	Jen Lauer
V&V Date (YYYY-MM-DD)	2006.09.20
V&V Edition	1
V&V Disposition and Status	OK
V&V Charge Time	18.255

A.2 Comments