

V&V Reference Report

L2 ASCDS Version : 7.6.8

Observation 3632 - L2 Version 001
Chandra X-Ray Center

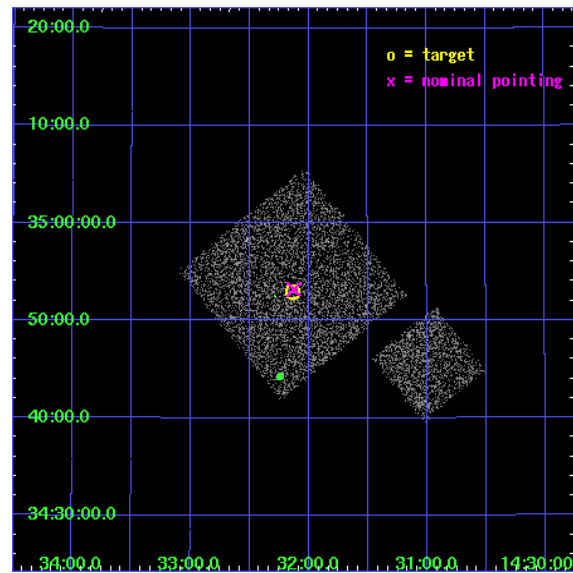
L2 Processing Date : Jul 29 2006

Contents

1	Front	2
2	OBI	3
2.1	OBI	3
2.1.1	Images	3
2.1.2	Bias	3
2.1.3	Parameters	4
2.1.4	Events	4
2.2	Compared Parameters	5
2.3	Aspect	6
2.4	Star Slots	9
2.4.1	Slot 3	9
2.4.2	Slot 4	10
2.4.3	Slot 5	11
2.4.4	Slot 6	12
2.4.5	Slot 7	13
2.5	FID Slots	14
2.5.1	Slot 0	14
2.5.2	Slot 1	15
2.5.3	Slot 2	16
3	Point Sources	17
A	Summary	18
A.1	Status	18
A.2	Comments	18

1 Front

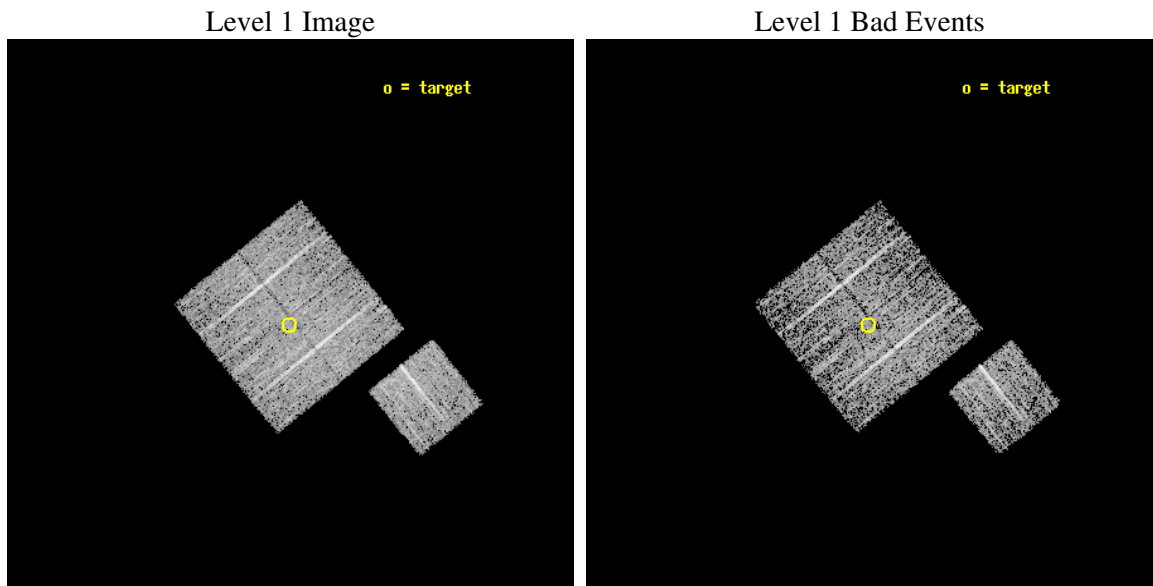
seq_num	900232
obs_id	3632
title	CHANDRA LARGE SCALE SURVEY OF THE NOAO BOOTES DEEP FIELD
observer	Dr. Stephen Murray
object	NOAO FIELD F18
dtcycle	0
cycle	P
ra_targ	218.034014
dec_targ	34.882776
ra_nom	218.03134370285
dec_nom	34.886782284207
roll_nom	141.01021976707
revision	2
ontime	4674.7999910116
livetime	4613.7202875914
ontime0	4674.7999910116
ontime1	4674.7999910116
ontime2	4671.65899086
ontime3	4674.7999910116
ontime6	4674.7999910116
l2events	9466



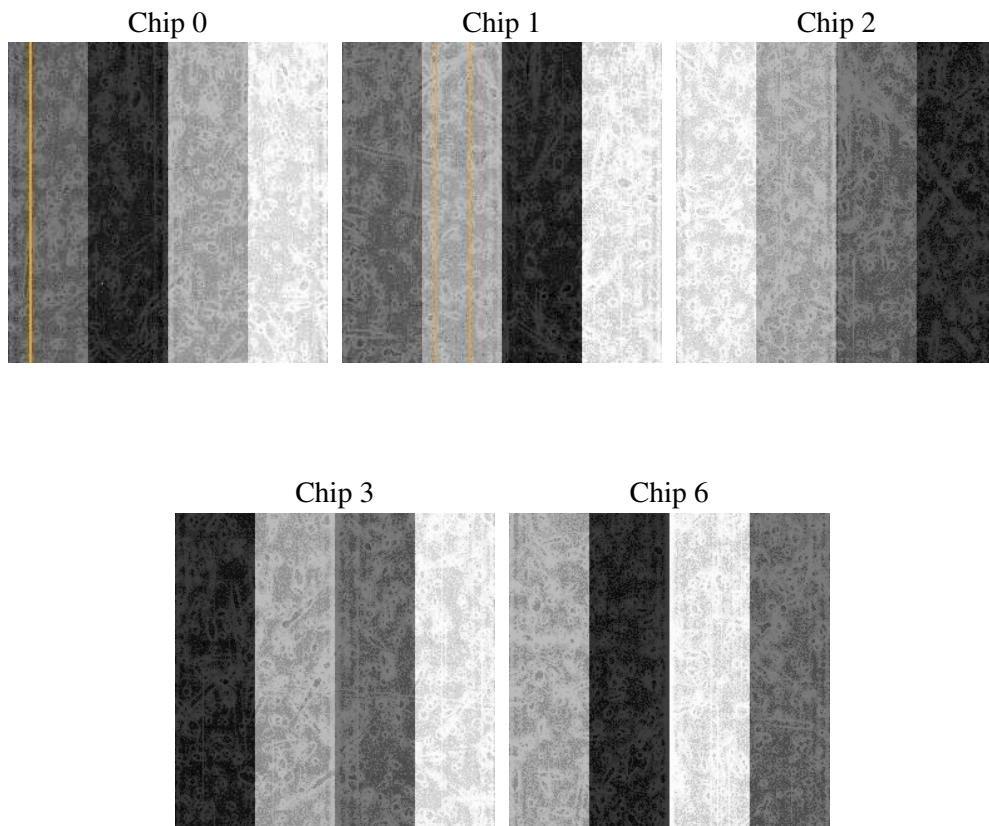
2 OBI

2.1 OBI

2.1.1 Images



2.1.2 Bias



2.1.3 Parameters

obi_num	1
ascdsver	7.6.8
caldbver	3.2.2
date	2006-07-29T22:21:35
revision	2

sched_exp_time	4900.000000
ontime	4680.1043973267
ontime0	4680.1044172645
ontime1	4680.1044172645
ontime2	4676.9634171128
ontime3	4680.1043973267
ontime6	4680.1044172645
l1events	114973

2.1.4 Events

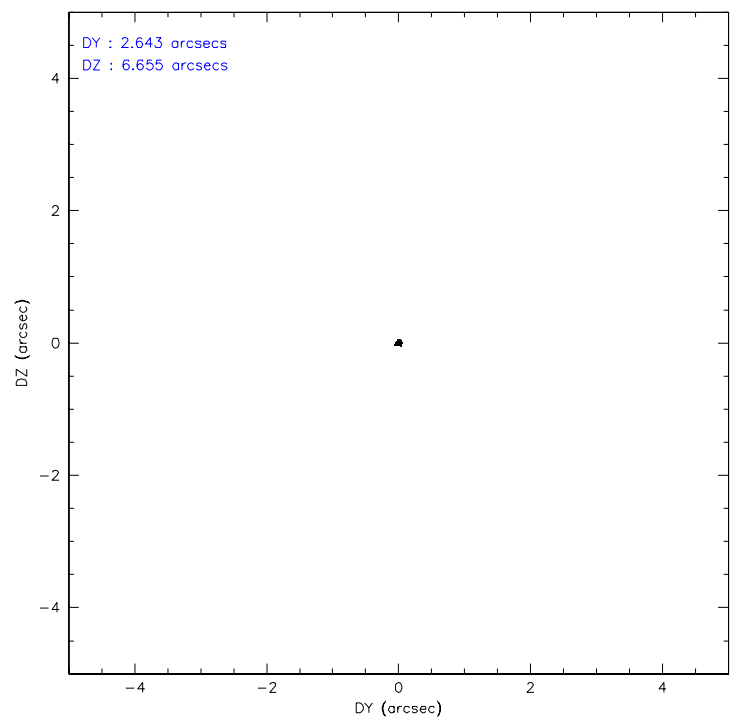
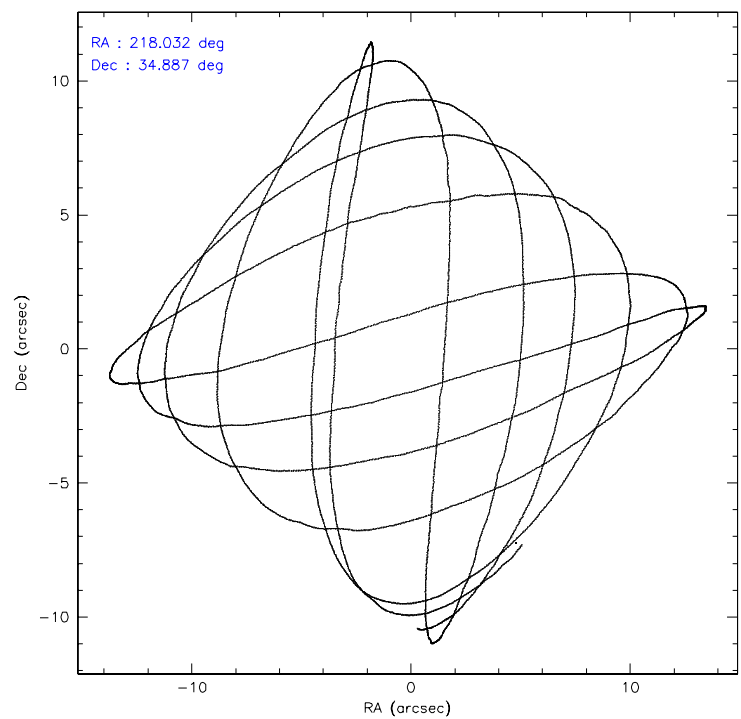
	ccd 0	ccd 1	ccd 2	ccd 3	ccd 6
level 1 events	21497	21479	24569	23416	24012
rejected events	19259	19025	22337	21145	21601
rejected %	89%	88%	90%	90%	89%

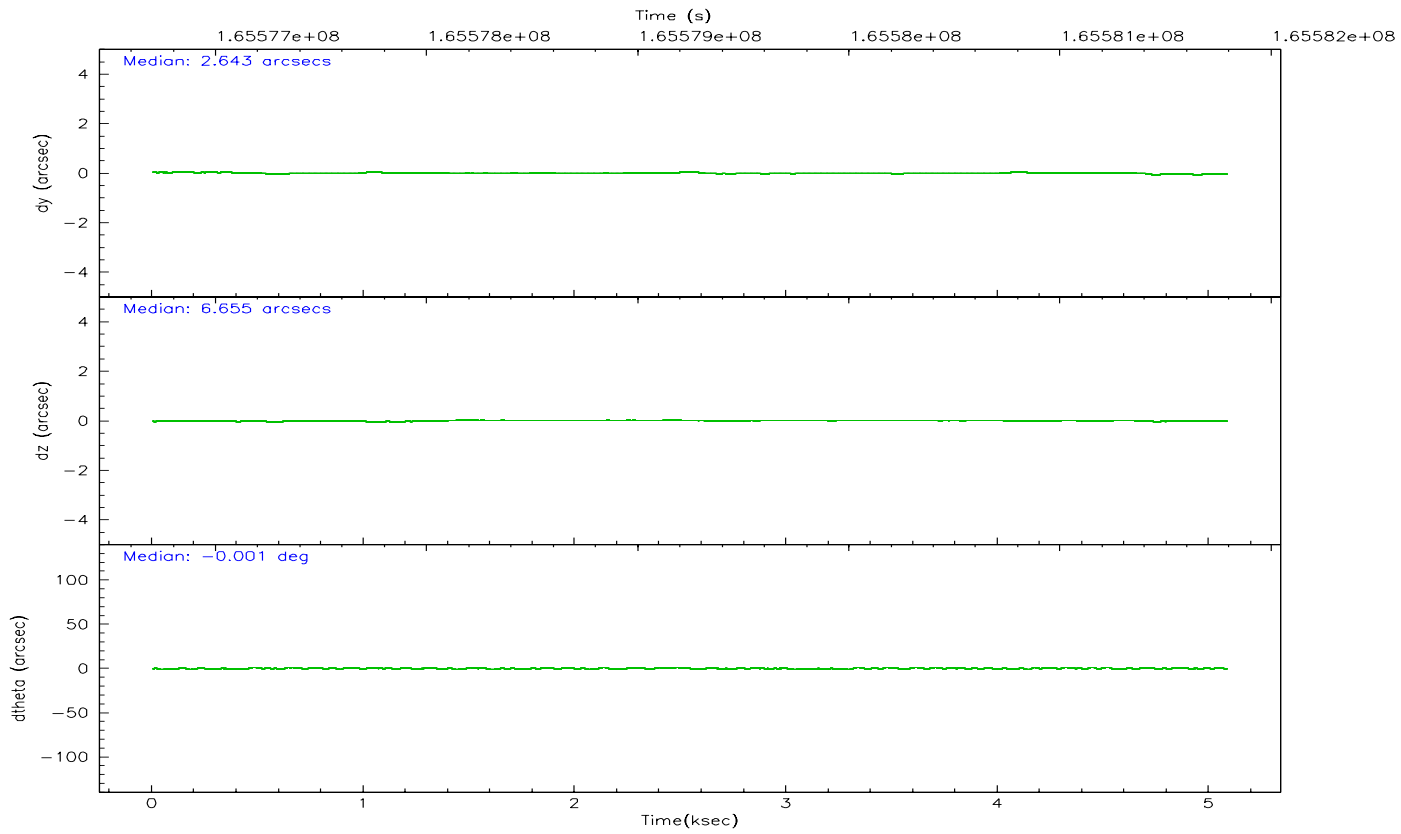
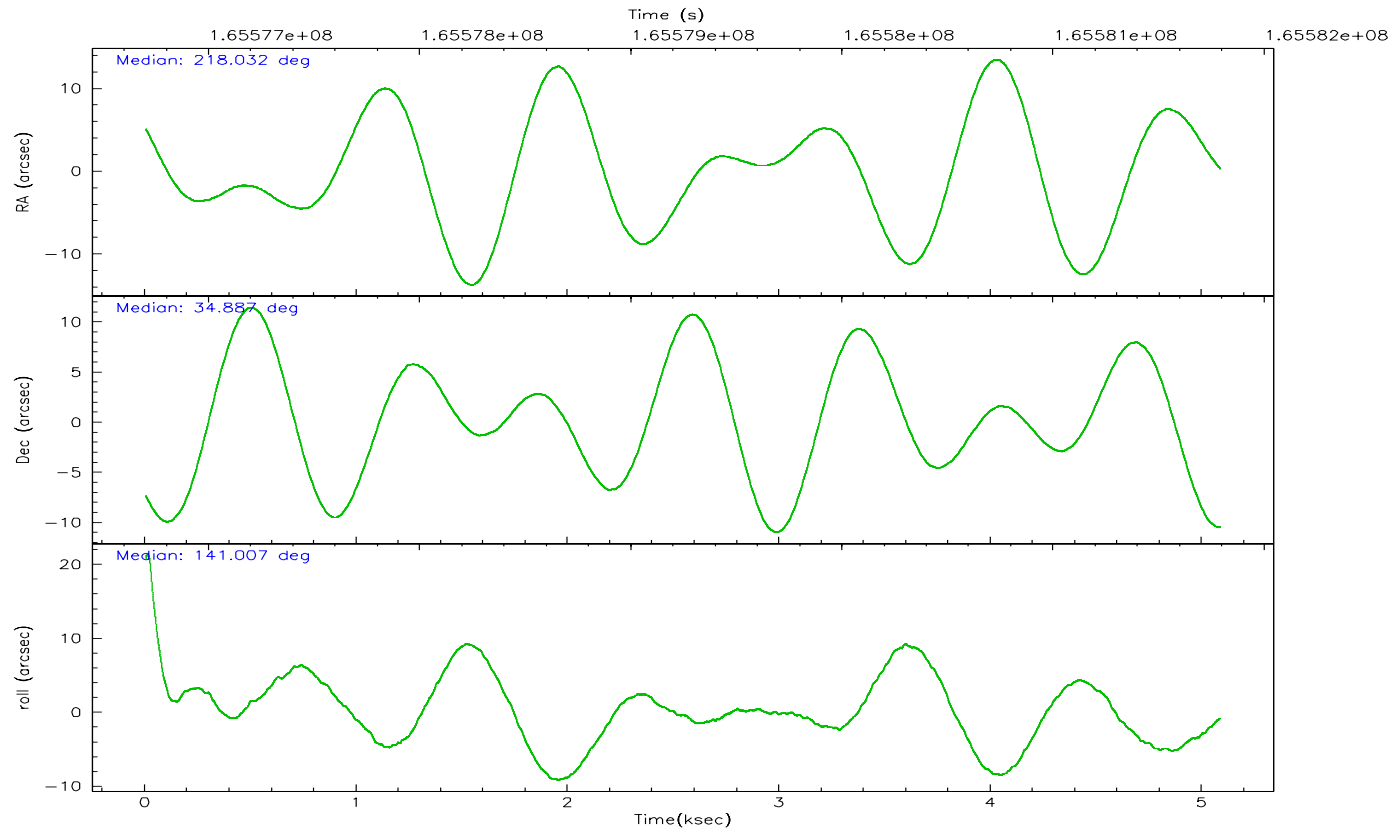
	ccd 0	ccd 1	ccd 2	ccd 3	ccd 6
grade 0 events	812	901	844	873	903
	3%	4%	3%	3%	3%
grade 1 events	12	11	17	10	8
	0%	0%	0%	0%	0%
grade 2 events	526	497	498	445	501
	2%	2%	2%	1%	2%
grade 3 events	273	308	251	292	282
	1%	1%	1%	1%	1%
grade 4 events	240	306	240	265	278
	1%	1%	0%	1%	1%
grade 5 events	670	742	648	771	759
	3%	3%	2%	3%	3%
grade 6 events	387	447	401	400	453
	1%	2%	1%	1%	1%
grade 7 events	18577	18267	21670	20360	20828
	86%	85%	88%	86%	86%

2.2 Compared Parameters

Parameter	Planned	Actual	Parameter	Planned	Actual
Instrument	ACIS	ACIS	Obspar format version number	6	6
Detector	ACIS-01236	ACIS-01236	Obspar file type	PREDICTED	ACTUAL
Grating	NONE	NONE	Obspar update status	NONE	UPDATED
Data mode	VFAINT	VFAINT	On-chip summing requested	N	N
Observation mode	POINTING	POINTING	Subarray requested	NONE	NONE
Pointing RA	218.064346	218.0313437028543	Alternating exposures requested	N	N
Pointing Dec	34.882692	34.88678228420665	Primary exposure time	0.000000	3.1
Pointing Roll	140.782648	141.0102197670737			
SIM focus pos (mm)	-0.782348	-0.7809083437167272			
SIM defocus (mm)	0	0.001439871863259334			
SIM translation stage pos (mm)	-233.592463	-233.5874344608287			
SIM translation stage offset (mm)	0	-0.005018542100998502			
Observation start time	165576894.184000	165576517.63278			
Observation start date	2003-04-01T09:33:50	2003-04-01T09:28:37			
Observation end time	165581794.184000	165581927.58301			
Observation end date	2003-04-01T10:55:30	2003-04-01T10:58:47			
Read mode	TIMED	TIMED			

2.3 Aspect



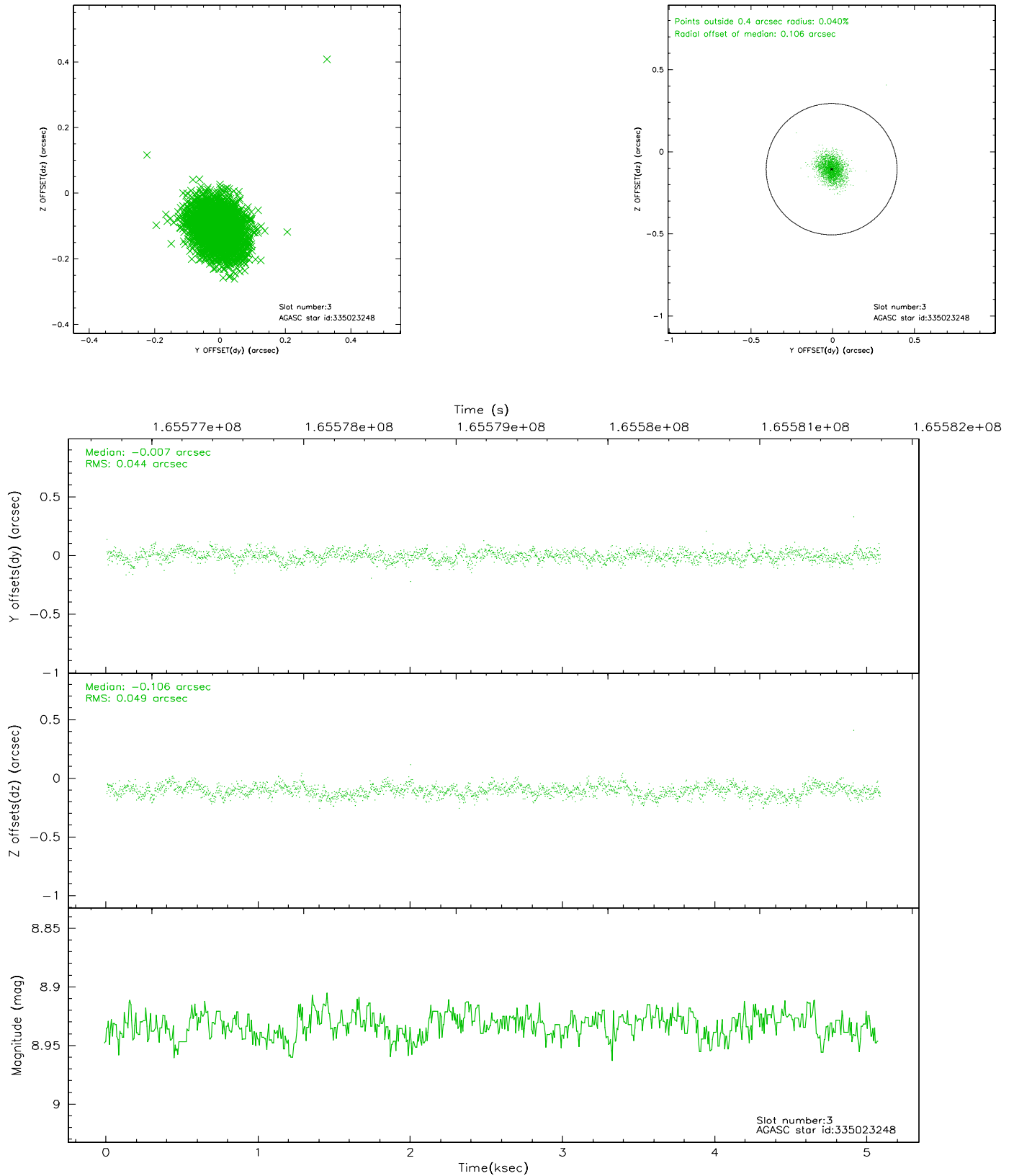


Slot Statistics

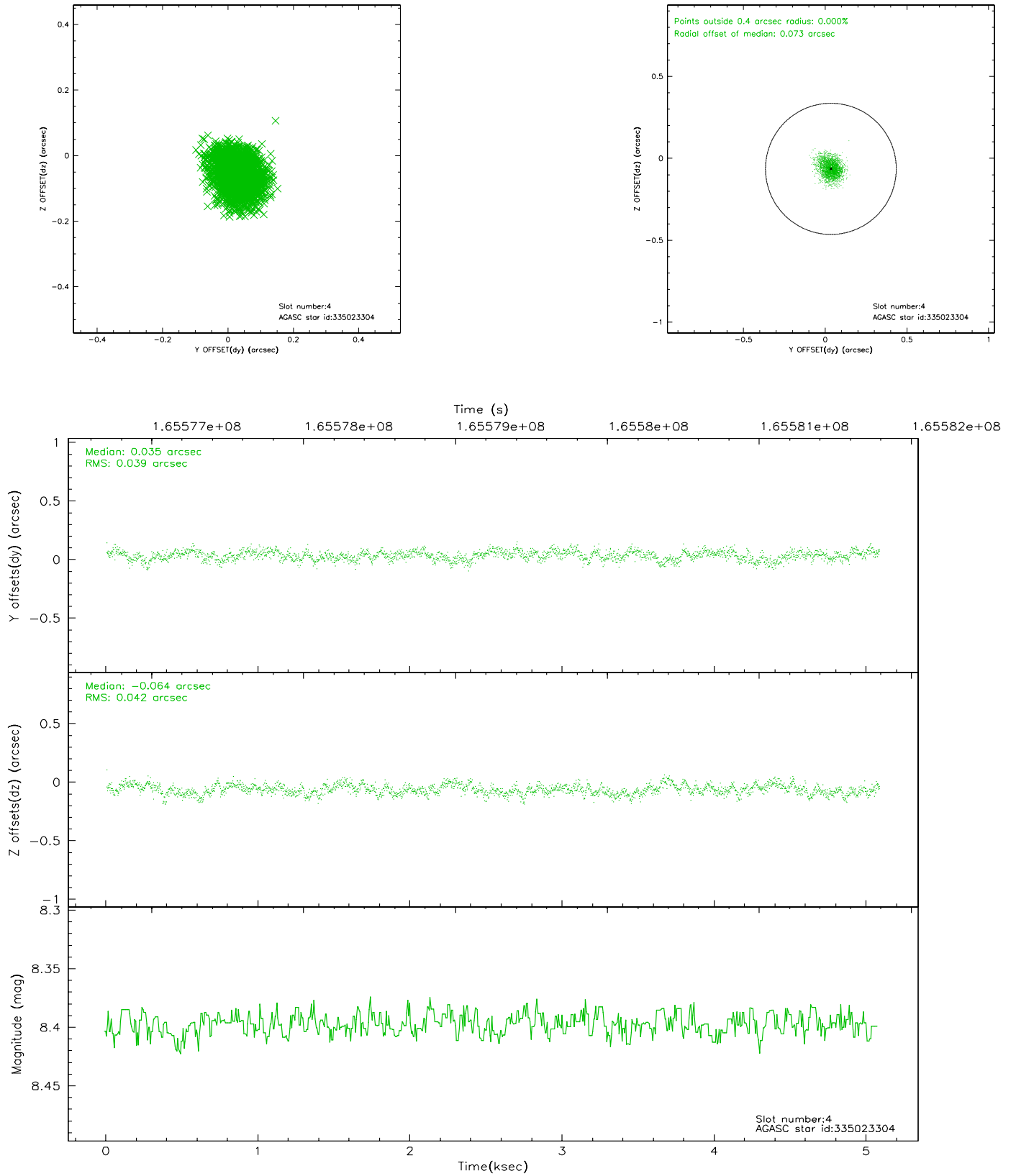
slot	status	id	mag	n_pts	med_dy	med_dz	dr1	dr2	ra	dec	mean_y	mean_z
0	FID	ACIS-I-1	7.25	1240	-0.006	0.021	0.005	0.009	0.000000	0.000000	937.14	-830.03
1	FID	ACIS-I-5	7.24	1240	-0.053	0.045	0.006	0.009	0.000000	0.000000	-1810.31	1066.94
2	FID	ACIS-I-6	7.26	1240	-0.032	0.005	0.007	0.011	0.000000	0.000000	401.41	1712.71
3	GUIDE	335023248	8.93	2479	-0.007	-0.106	0.069	0.112	217.634832	34.944512	1124.80	626.81
4	GUIDE	335023304	8.40	2480	0.035	-0.064	0.061	0.100	218.883608	34.686545	-2318.16	-993.88
5	GUIDE	335414336	8.96	2480	-0.113	0.098	0.083	0.132	218.979022	35.090910	-1606.27	-2294.20
6	GUIDE	335417968	9.40	2479	0.001	0.037	0.087	0.142	217.358149	35.055285	2009.59	828.00
7	GUIDE	335421696	8.96	2476	0.080	0.031	0.094	0.159	218.045699	35.772449	2068.75	-2446.80

2.4 Star Slots

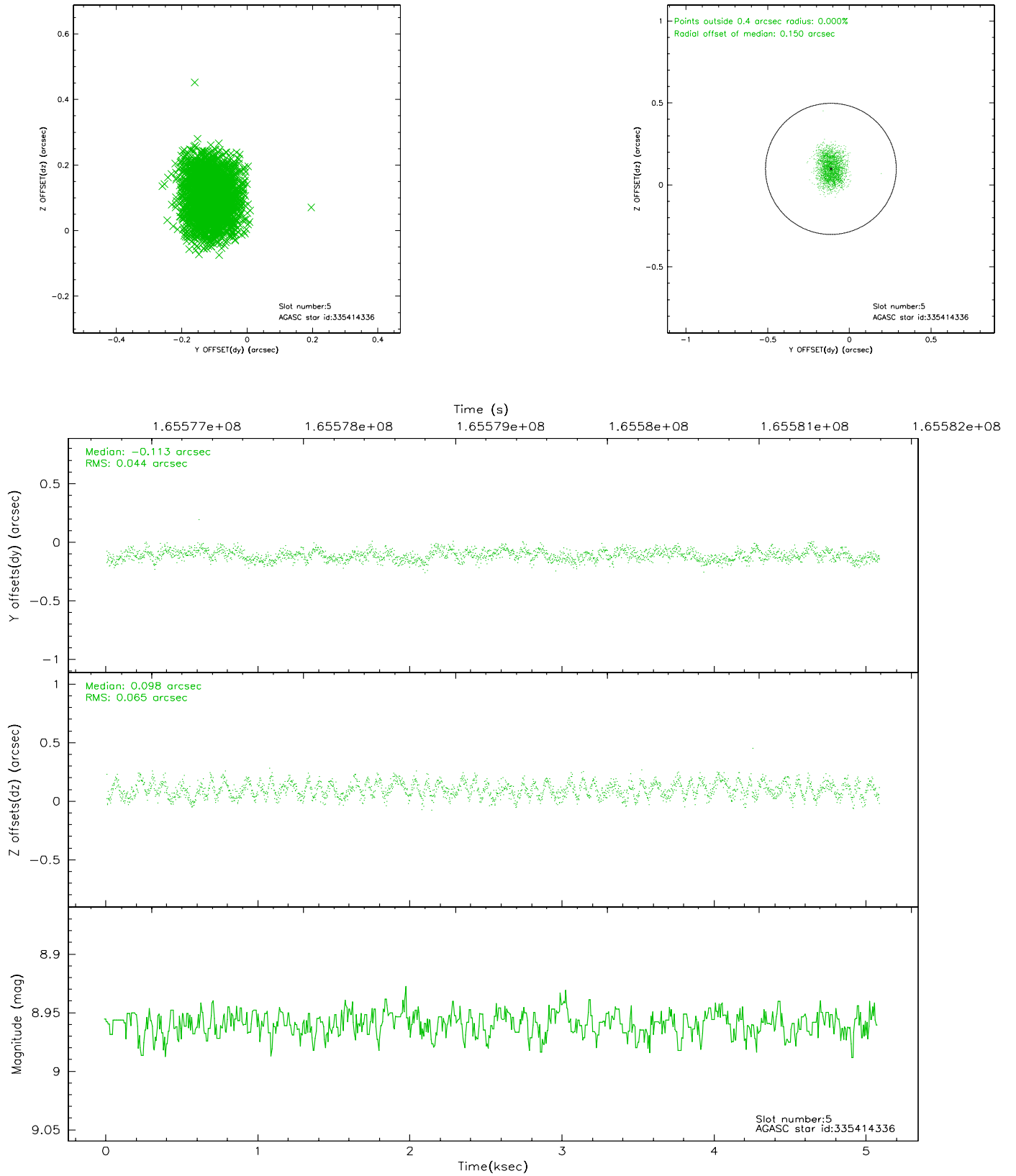
2.4.1 Slot 3



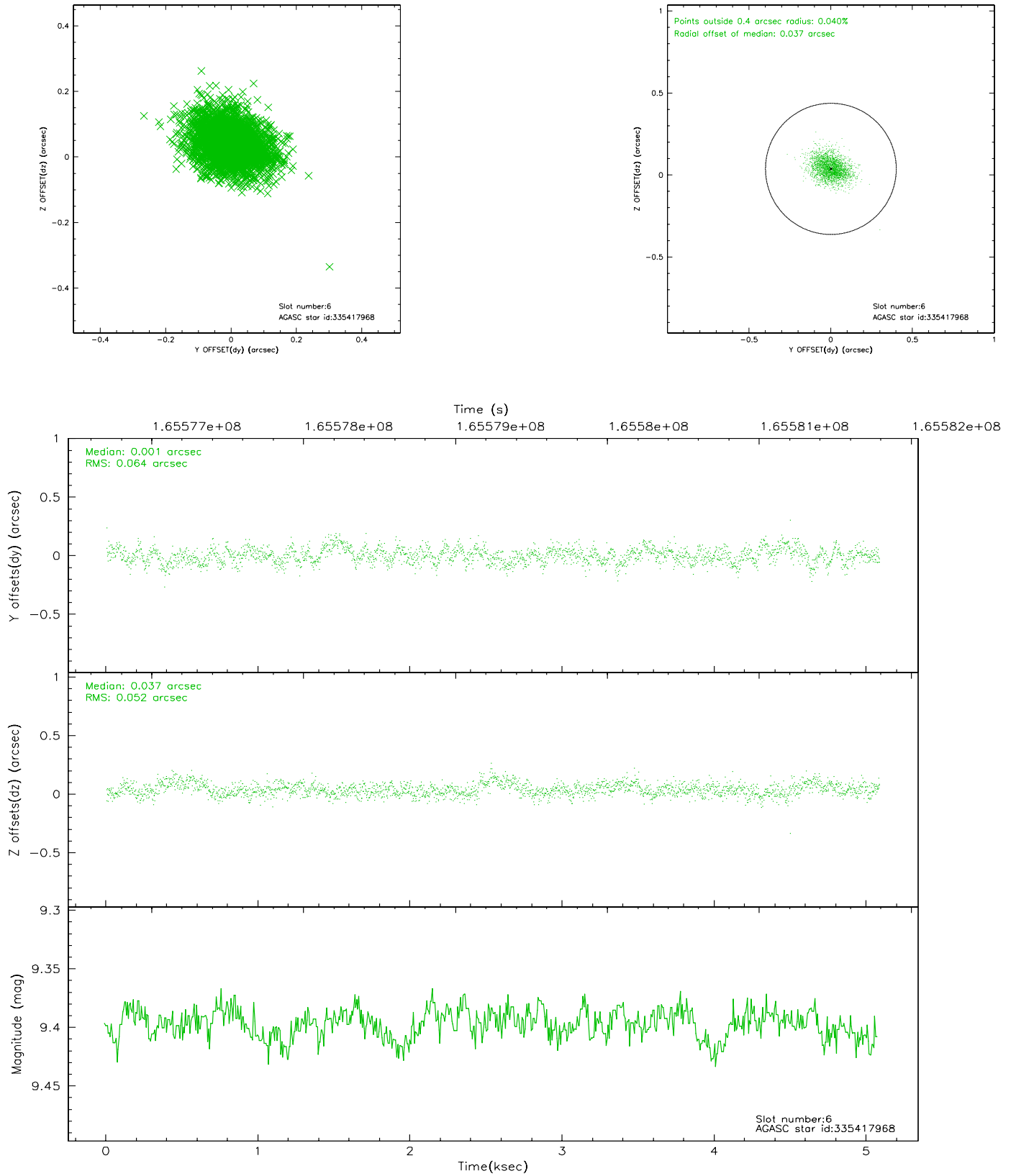
2.4.2 Slot 4



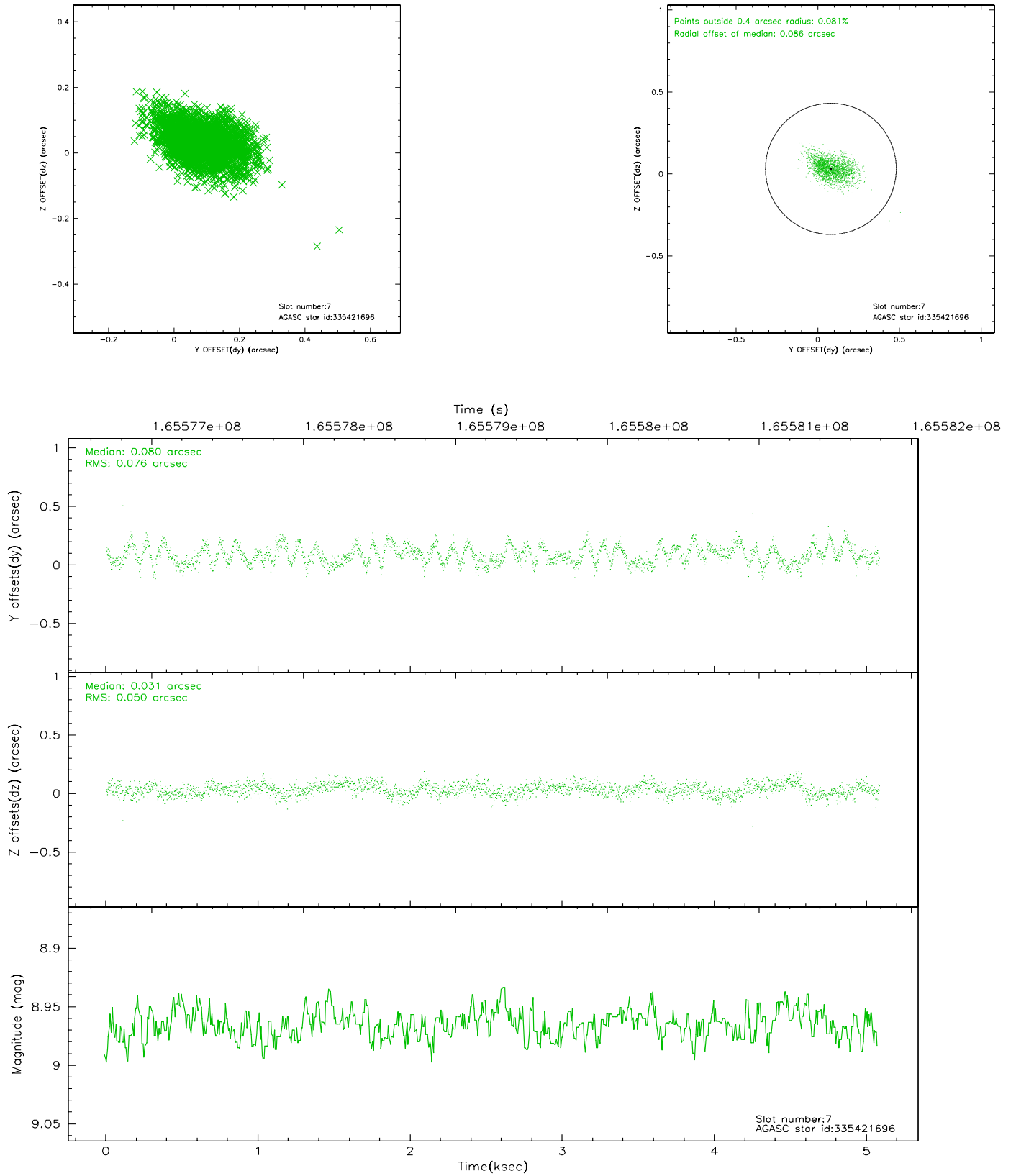
2.4.3 Slot 5



2.4.4 Slot 6

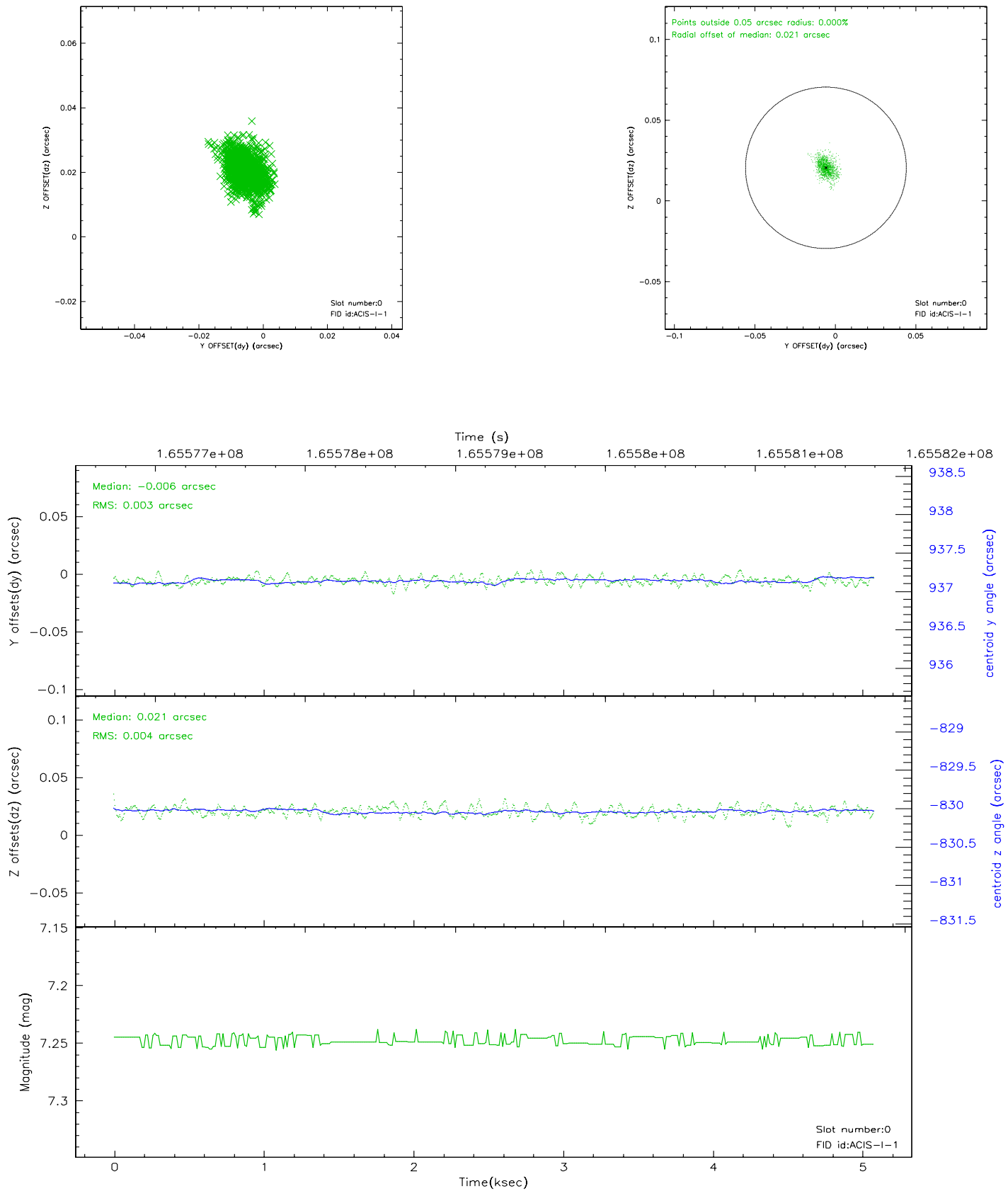


2.4.5 Slot 7

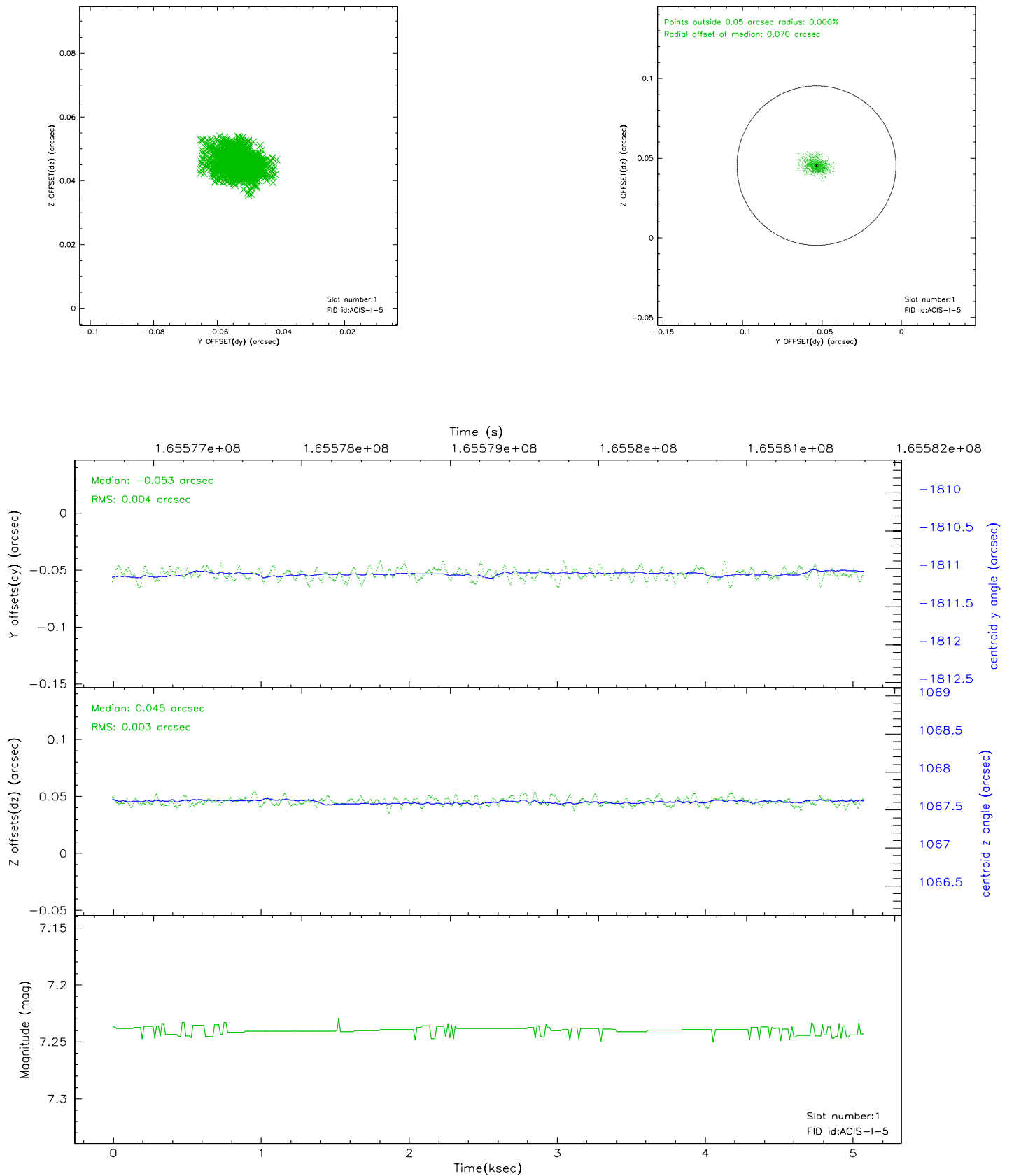


2.5 FID Slots

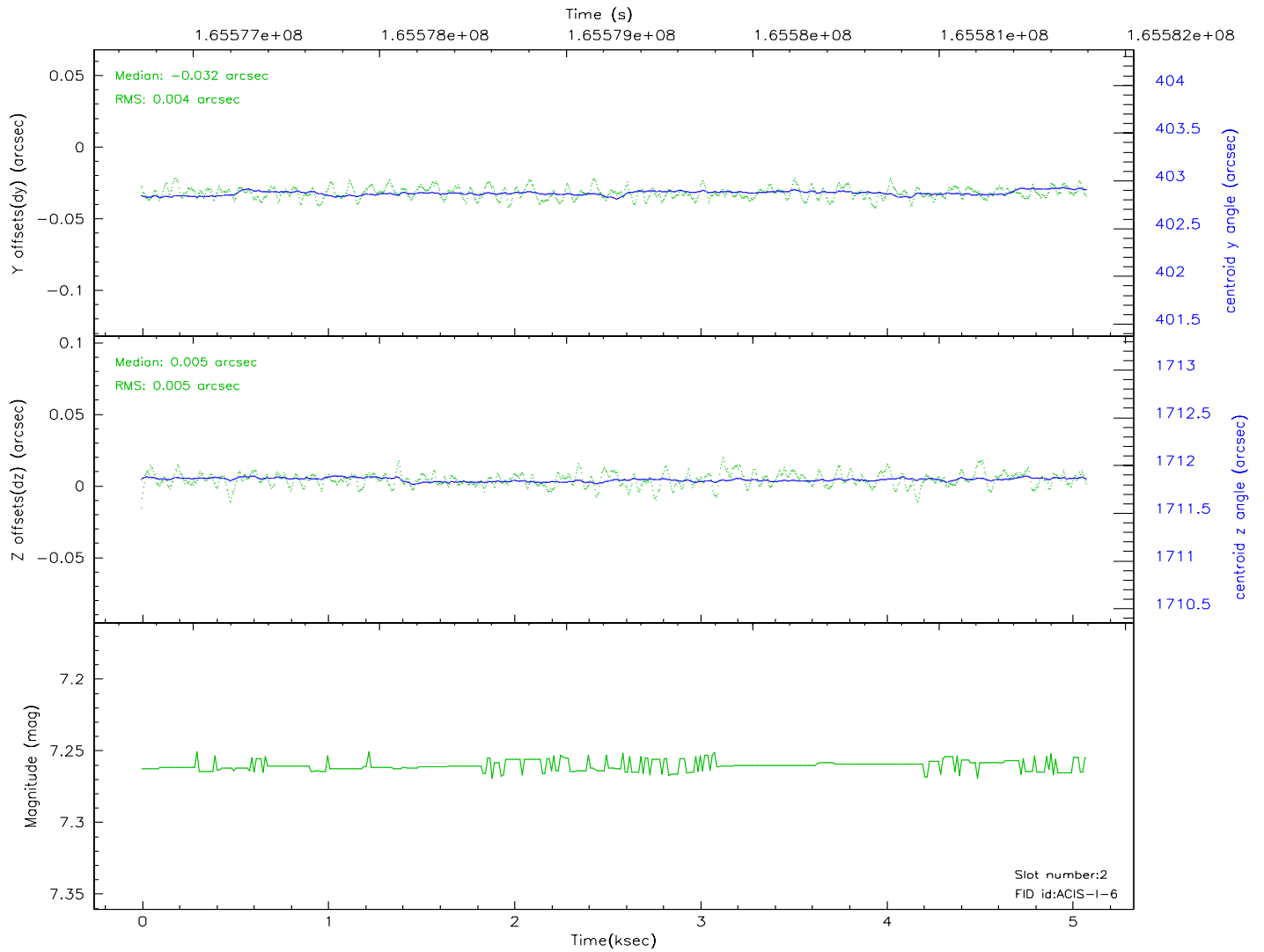
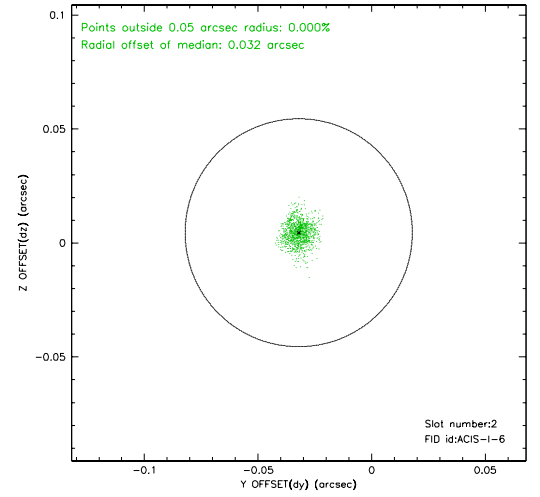
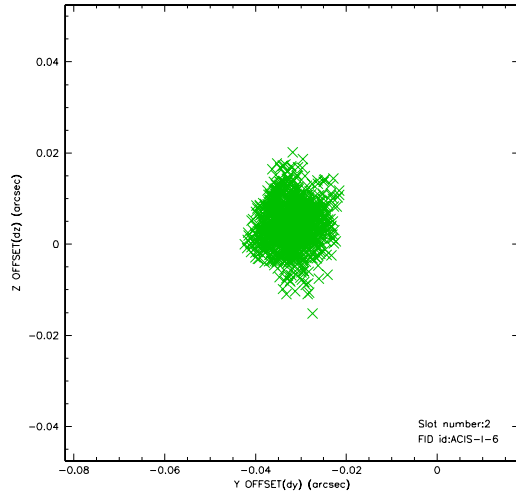
2.5.1 Slot 0



2.5.2 Slot 1



2.5.3 Slot 2



3 Point Sources

A Summary

A.1 Status

V&V Scientist	Jen Lauer
V&V Date (YYYY-MM-DD)	2006.07.30
V&V Edition	1
V&V Disposition and Status	OK
V&V Charge Time	4.674

A.2 Comments