

V&V Reference Report

L2 ASCDS Version : 7.6.9

Observation 3572 - L2 Version 001
Chandra X-Ray Center

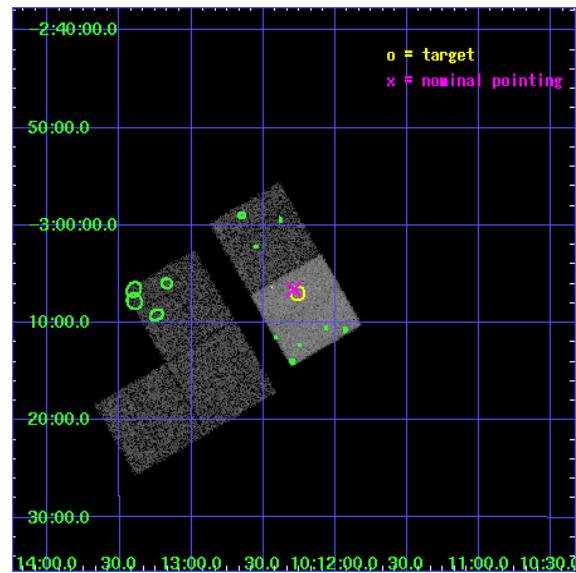
L2 Processing Date : Oct 18 2006

Contents

1	Front	2
2	OBI	3
2.1	OBI	3
2.1.1	Images	3
2.1.2	Bias	3
2.1.3	Parameters	4
2.1.4	Events	4
2.2	Compared Parameters	5
2.3	Aspect	6
2.4	Star Slots	9
2.4.1	Slot 3	9
2.4.2	Slot 4	10
2.4.3	Slot 5	11
2.4.4	Slot 6	12
2.4.5	Slot 7	13
2.5	FID Slots	14
2.5.1	Slot 0	14
2.5.2	Slot 1	15
2.5.3	Slot 2	16
3	Point Sources	17
A	Summary	18
A.1	Status	18
A.2	Comments	18

1 Front

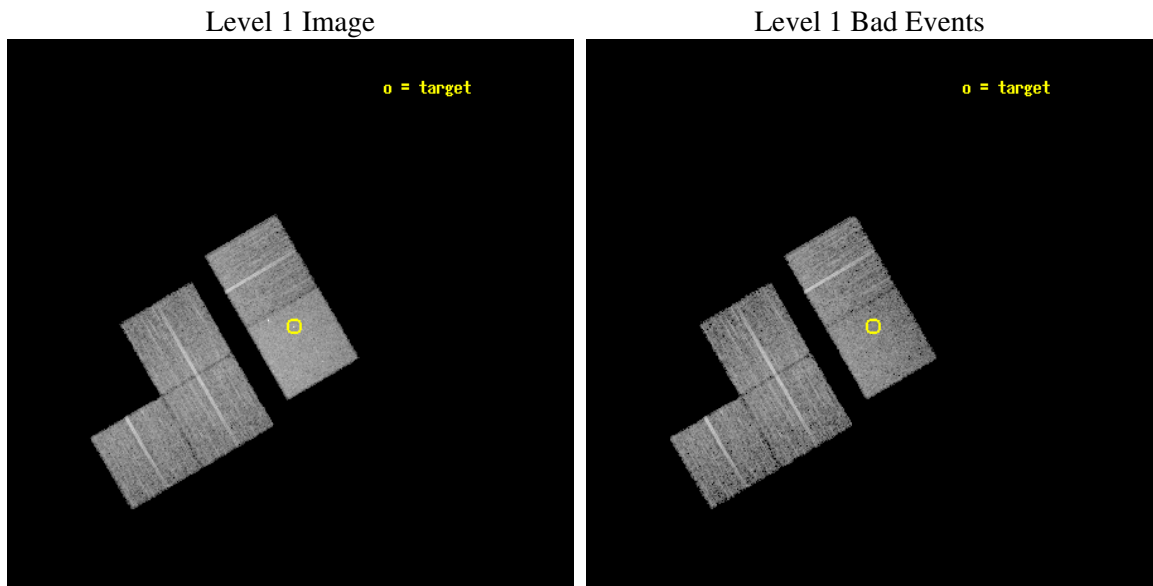
seq_num	700634
obs_id	3572
title	A STUDY OF QUASAR EVOLUTION WITH THE AID OF LENSING
observer	Professor Gordon Garmire
object	LBSQ1009-0252
dtcycle	0
cycle	P
ra_targ	153.065417
dec_targ	-3.117222
ra_nom	153.07167758111
dec_nom	-3.1098415972747
roll_nom	59.680302807689
revision	2
ontime	9507.6999817193
livetime	9383.4748819912
ontime1	9504.5589815676
ontime2	9507.6999817193
ontime3	9504.5590114892
ontime6	9507.6999817193
ontime7	9507.6999817193
l2events	55218



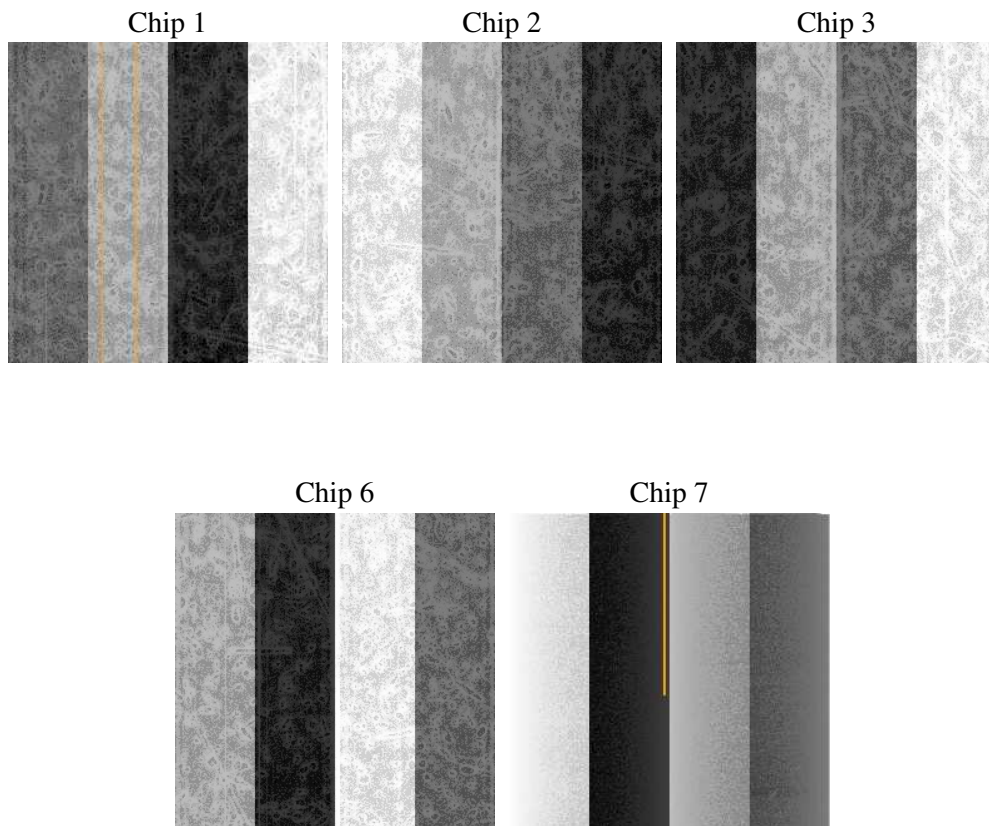
2 OBI

2.1 OBI

2.1.1 Images



2.1.2 Bias



2.1.3 Parameters

obi_num	1
ascdsver	7.6.9
caldsver	3.2.3
date	2006-10-18T16:54:11
revision	2

sched_exp_time	9400.000000
ontime	9510.9658677578
ontime1	9507.8248676062
ontime2	9510.9658677578
ontime3	9507.8248775899
ontime6	9510.96584782
ontime7	9510.9658677578
l1events	319571

2.1.4 Events

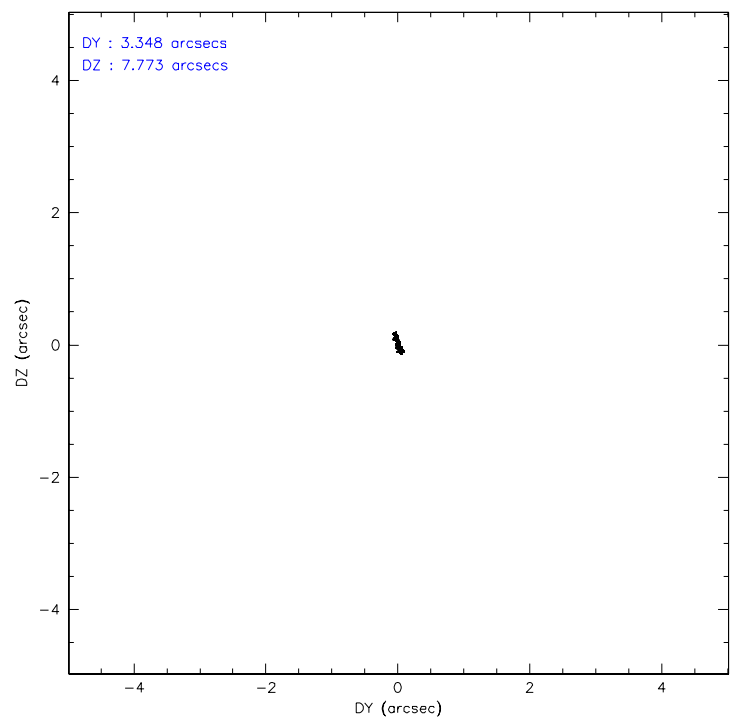
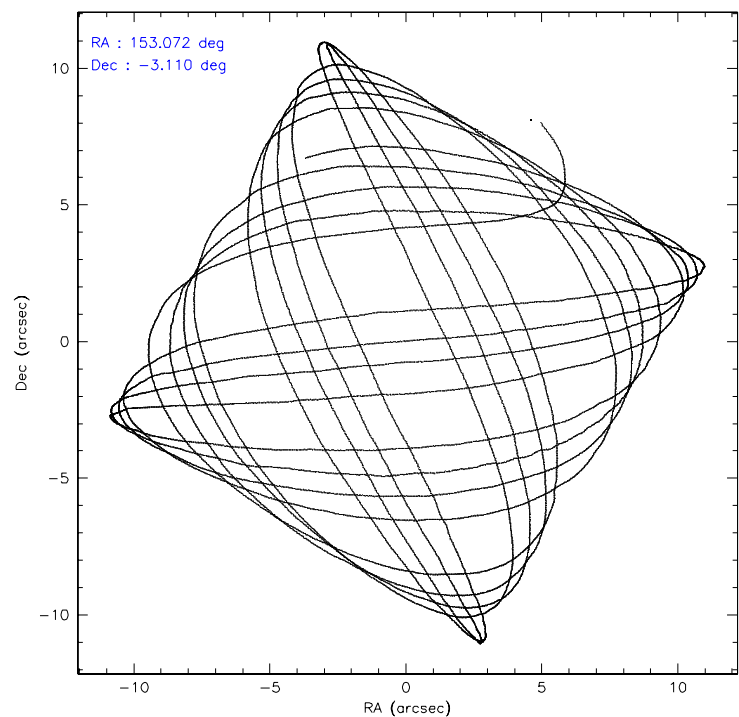
	ccd 1	ccd 2	ccd 3	ccd 6	ccd 7
level 1 events	54655	60254	59636	63529	81497
rejected events	47120	53349	52745	56253	50379
rejected %	86%	88%	88%	88%	61%

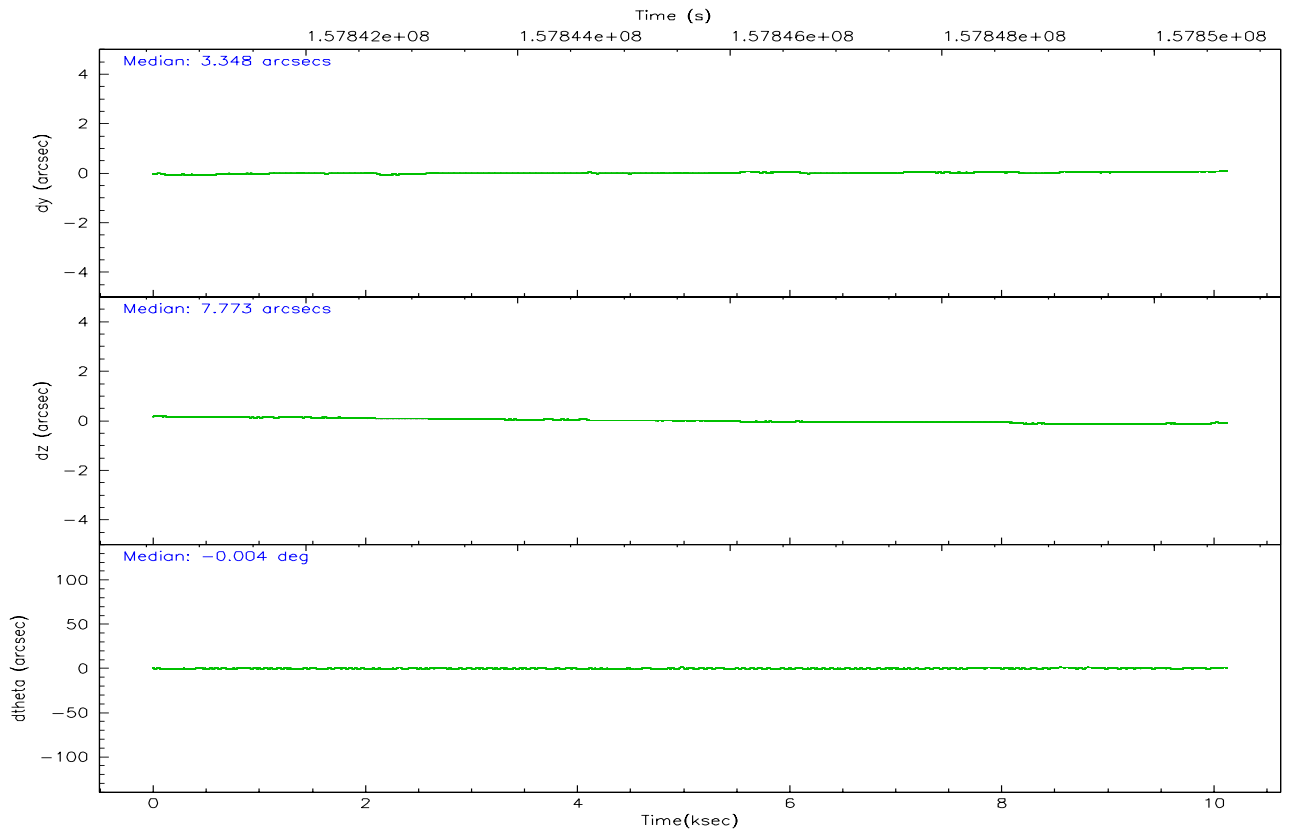
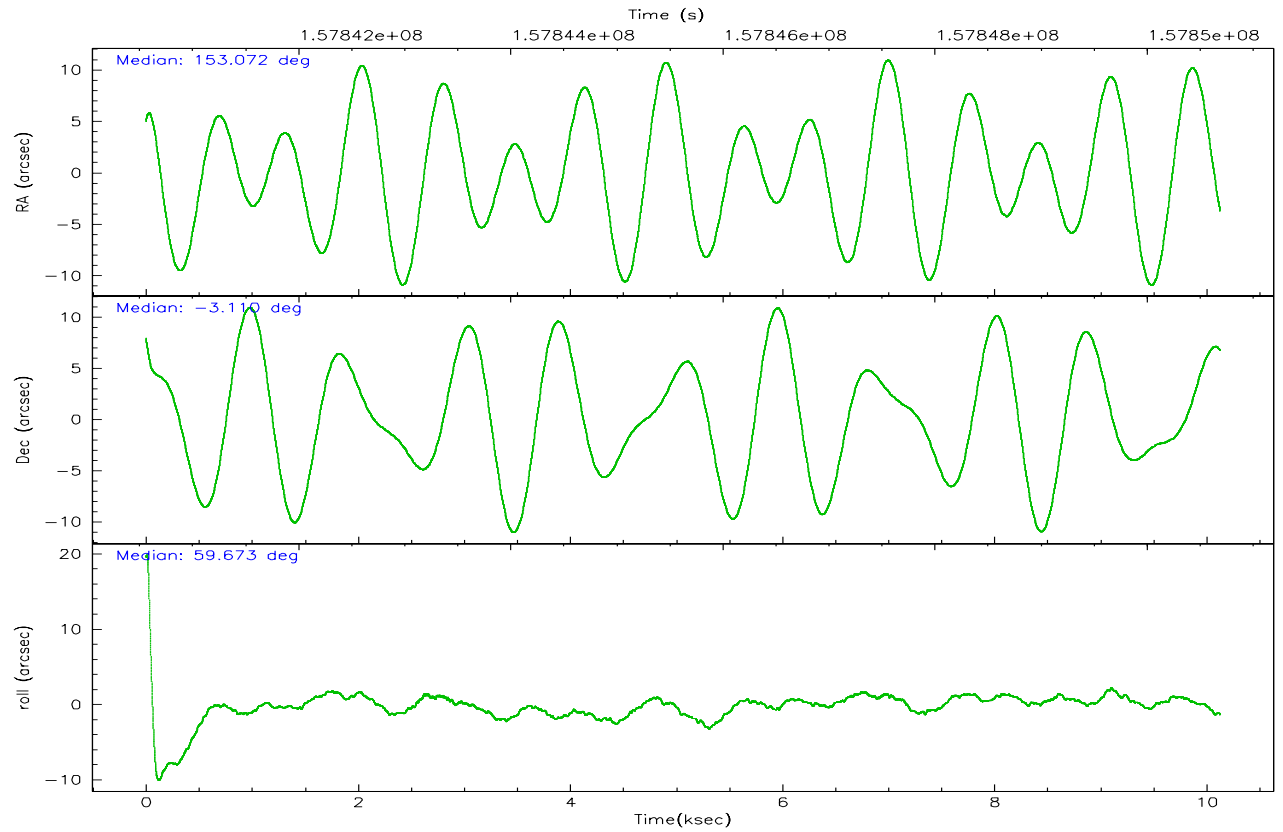
	ccd 1	ccd 2	ccd 3	ccd 6	ccd 7
grade 0 events	2969	3078	3051	2879	2054
	5%	5%	5%	4%	2%
grade 1 events	22	36	35	19	47
	0%	0%	0%	0%	0%
grade 2 events	1544	1374	1327	1522	7529
	2%	2%	2%	2%	9%
grade 3 events	780	670	720	730	1764
	1%	1%	1%	1%	2%
grade 4 events	754	650	652	664	1623
	1%	1%	1%	1%	1%
grade 5 events	2371	2222	2629	2749	5345
	4%	3%	4%	4%	6%
grade 6 events	1492	1134	1142	1482	18158
	2%	1%	1%	2%	22%
grade 7 events	44723	51090	50080	53484	44977
	81%	84%	83%	84%	55%

2.2 Compared Parameters

Parameter	Planned	Actual	Parameter	Planned	Actual
Instrument	ACIS	ACIS	Obspar format version number	6	6
Detector	ACIS-12367	ACIS-12367	Obspar file type	PREDICTED	ACTUAL
Grating	NONE	NONE	Obspar update status	NONE	UPDATED
Data mode	VFAINT	VFAINT	Number of optional ACIS chips dropped	0	0
Observation mode	POINTING	POINTING	On-chip summing requested	N	N
Pointing RA	153.071914	153.0716775811101	Subarray requested	NONE	NONE
Pointing Dec	-3.137091	-3.109841597274701	Alternating exposures requested	N	N
Pointing Roll	59.523643	59.68030280768944	Primary exposure time	0.000000	3.1
SIM focus pos (mm)	-0.684267	-0.6828225247311905			
SIM defocus (mm)	0	0.001444936568705701			
SIM translation stage pos (mm)	-190.132523	-190.1400660498719			
SIM translation stage offset (mm)	0	0.00754346686406393			
Observation start time	157841285.184000	157840052.54536			
Observation start date	2003-01-01T20:47:01	2003-01-01T20:27:32			
Observation end time	157850685.184000	157851465.40834			
Observation end date	2003-01-01T23:23:41	2003-01-01T23:37:45			
Read mode	TIMED	TIMED			

2.3 Aspect



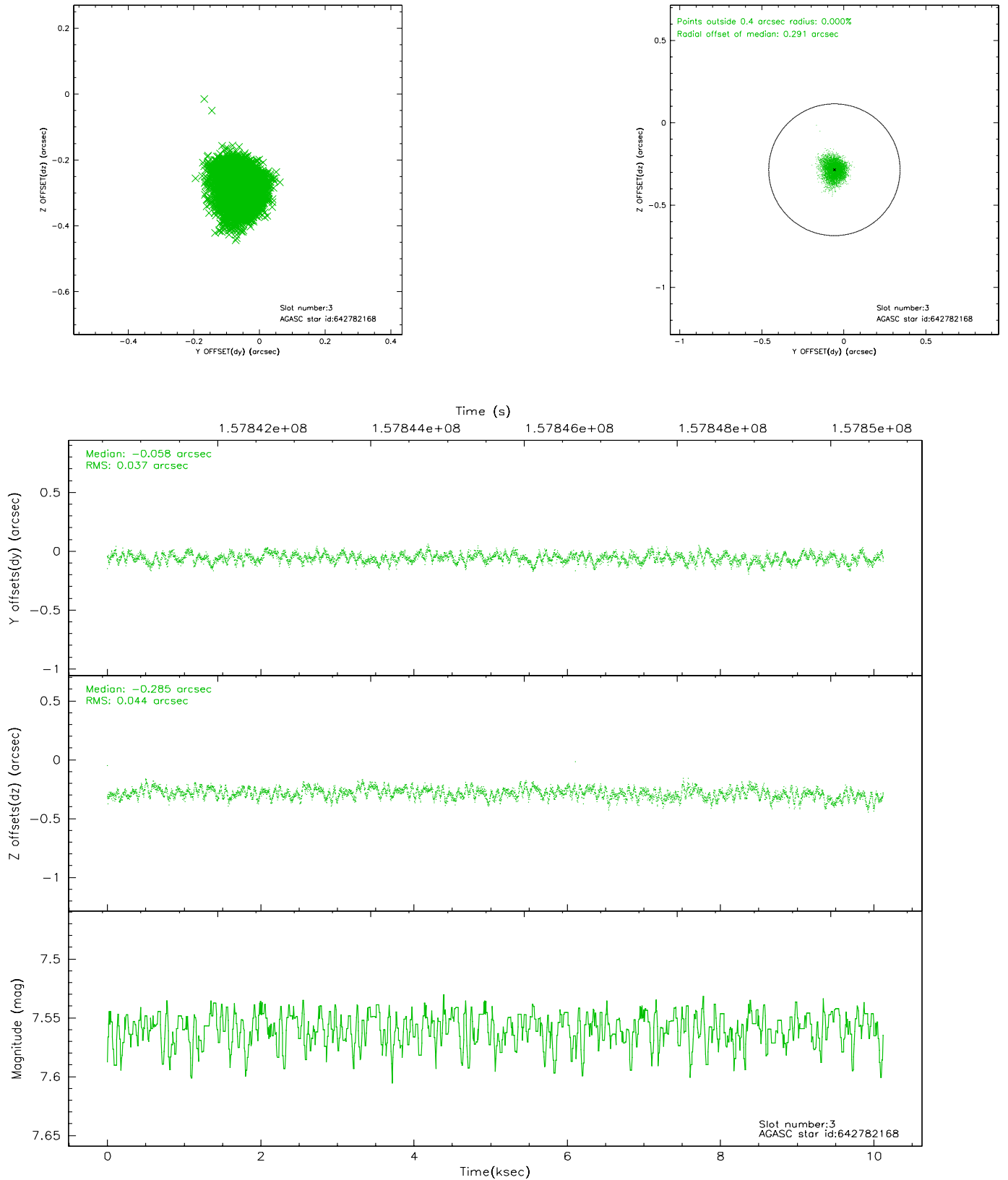


Slot Statistics

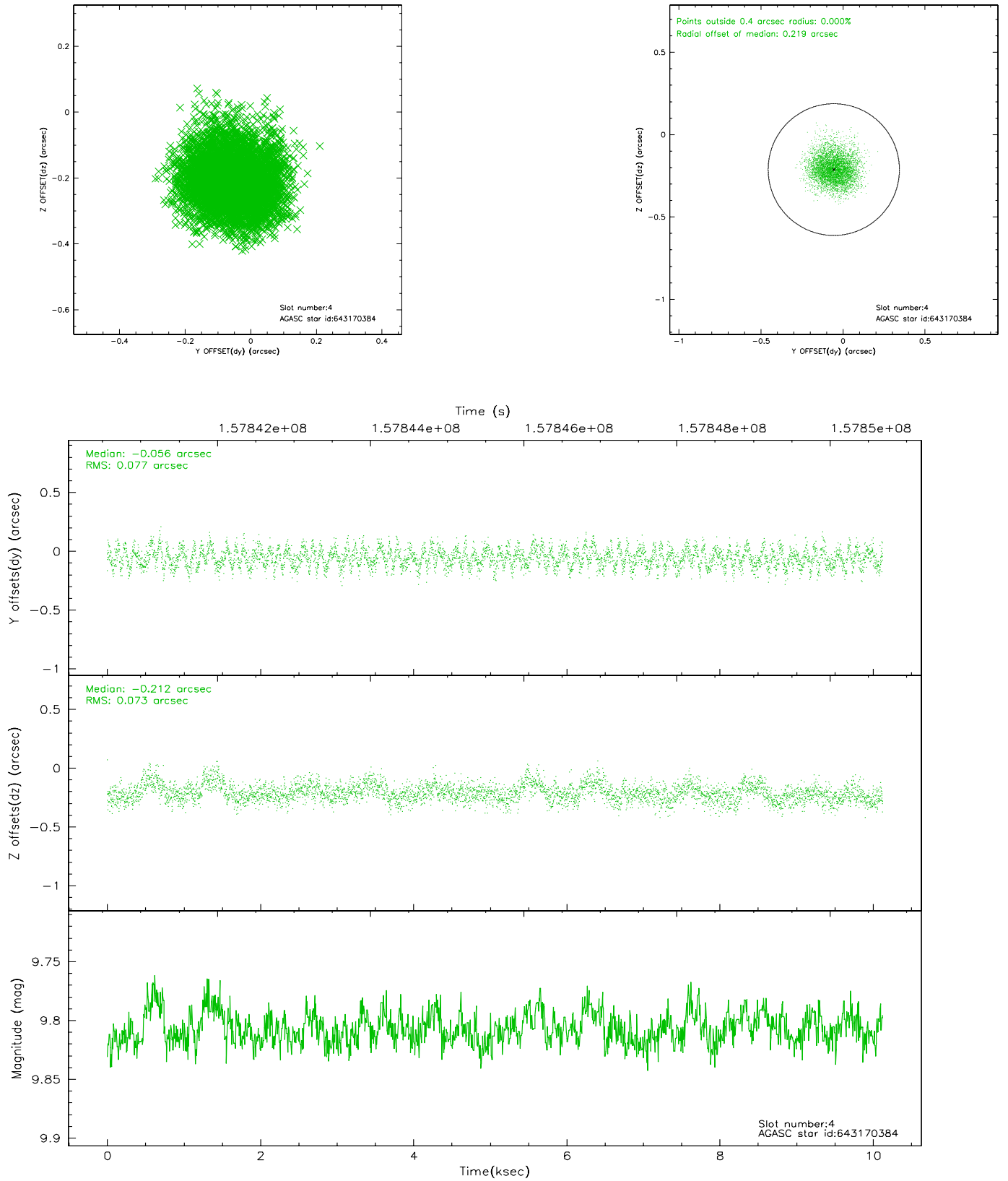
slot	status	id	mag	n_pts	med_dy	med_dz	dr1	dr2	ra	dec	mean_y	mean_z
0	FID	ACIS-S-2	7.12	2471	-0.001	0.012	0.010	0.019	0.000000	0.000000	-756.02	-1728.95
1	FID	ACIS-S-4	7.20	2471	-0.026	-0.002	0.009	0.029	0.000000	0.000000	2157.01	178.96
2	FID	ACIS-S-5	7.24	2471	-0.002	-0.001	0.009	0.021	0.000000	0.000000	-1808.17	173.25
3	GUIDE	642782168	7.56	4942	-0.058	-0.285	0.061	0.098	152.755476	-2.415068	1662.59	2299.08
4	GUIDE	643170384	9.81	4940	-0.056	-0.212	0.114	0.180	152.791025	-2.515599	1415.86	2005.84
5	GUIDE	643172392	9.74	4941	-0.102	0.230	0.114	0.184	153.736407	-3.070471	1418.23	-1936.77
6	GUIDE	643173600	8.35	4941	-0.086	0.182	0.070	0.111	153.677360	-2.875847	1914.62	-1399.47
7	GUIDE	643175936	8.27	4941	0.306	0.087	0.064	0.102	153.073623	-3.745671	-1884.95	-1117.03

2.4 Star Slots

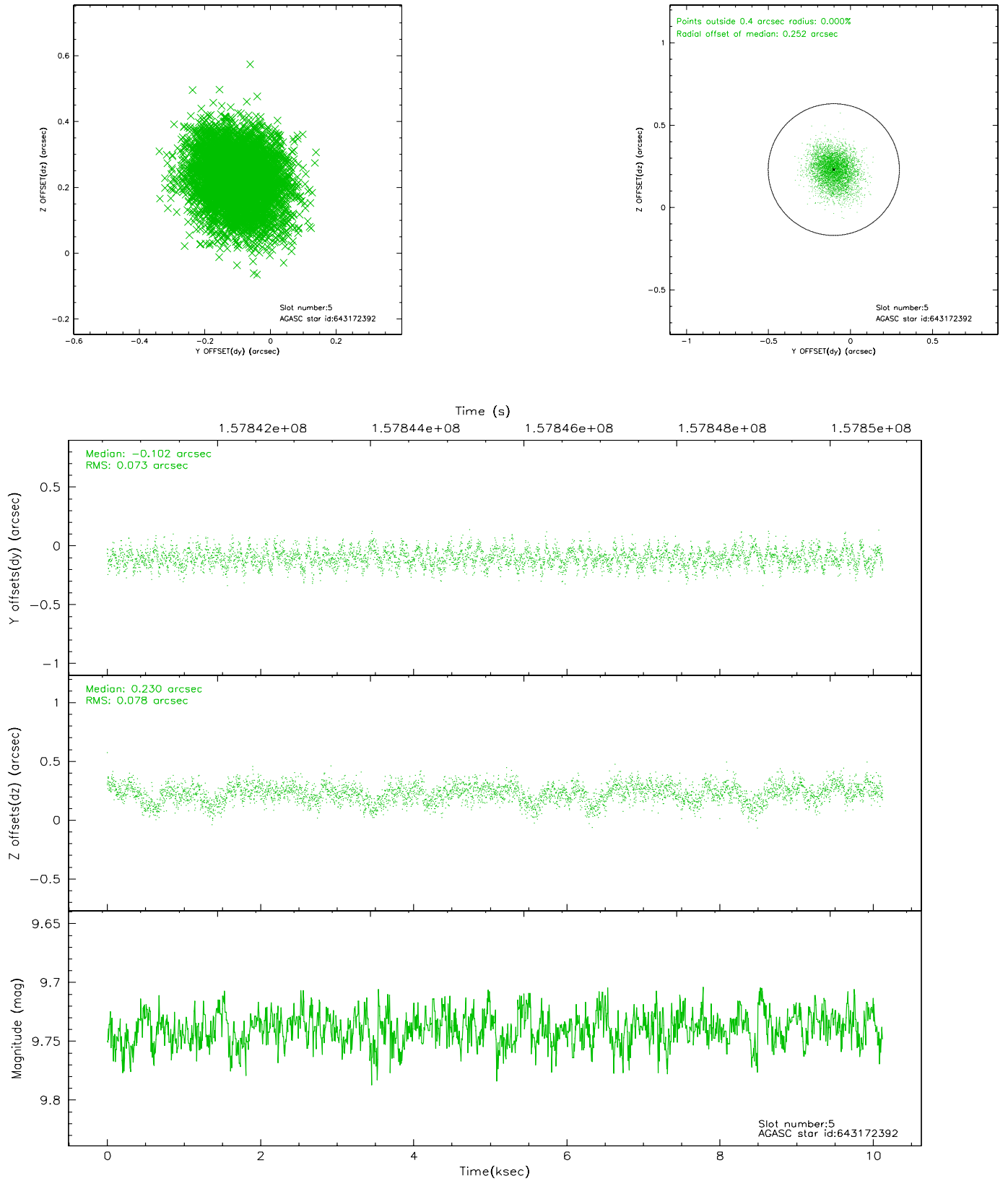
2.4.1 Slot 3



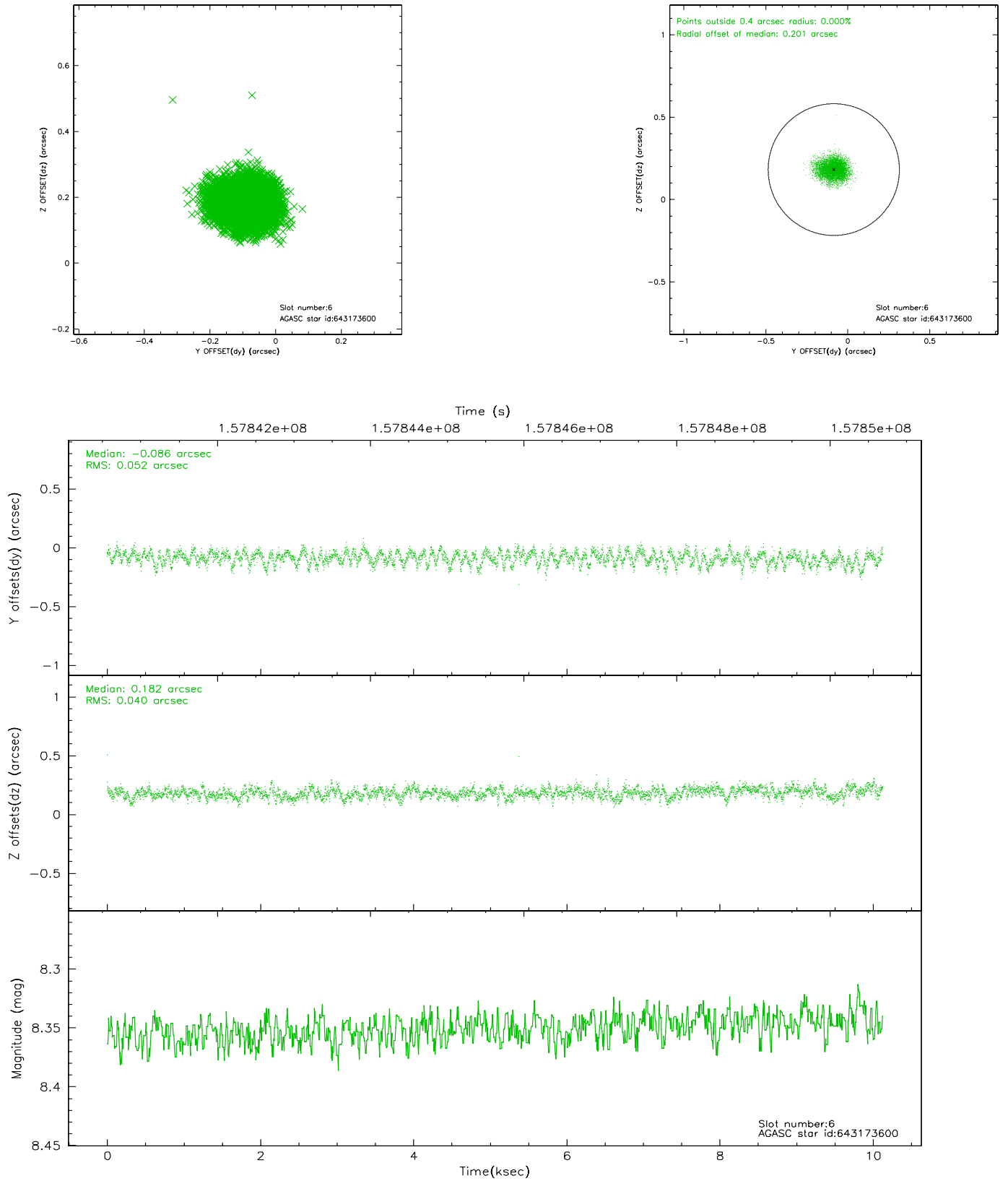
2.4.2 Slot 4



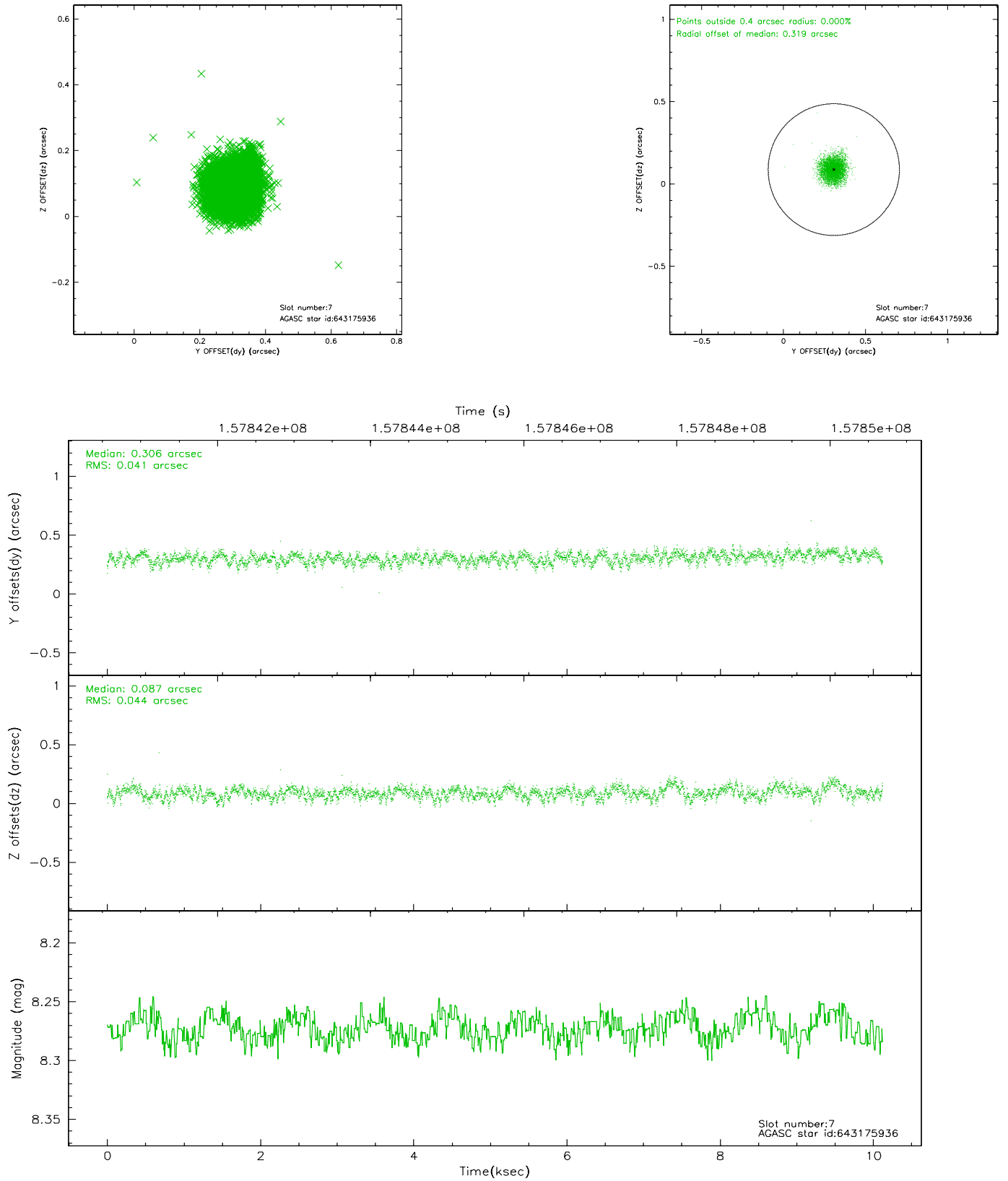
2.4.3 Slot 5



2.4.4 Slot 6

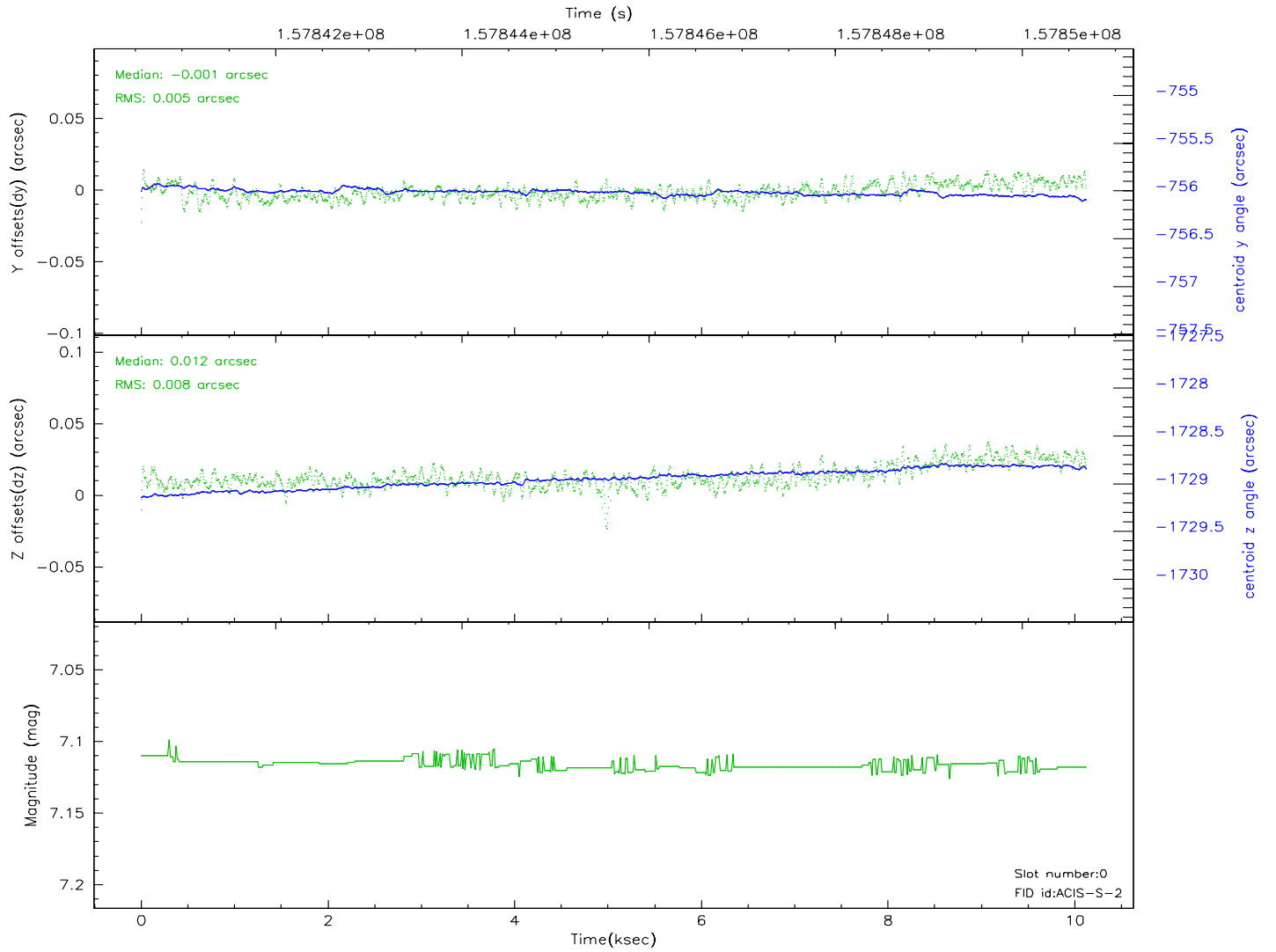
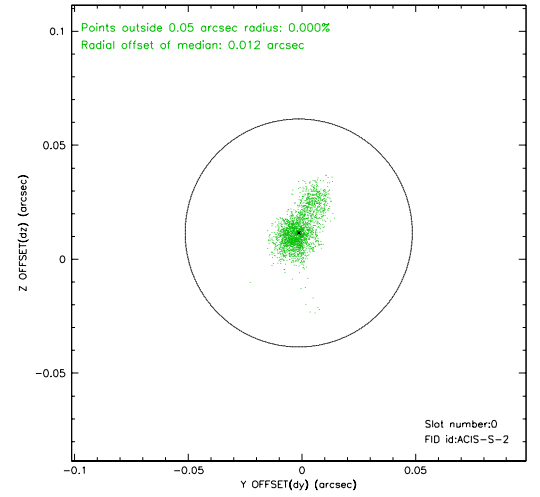
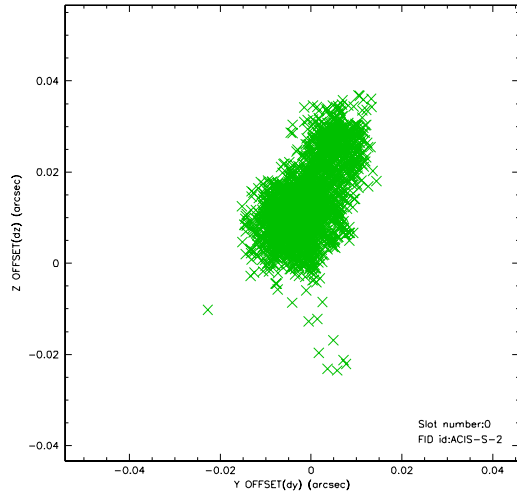


2.4.5 Slot 7

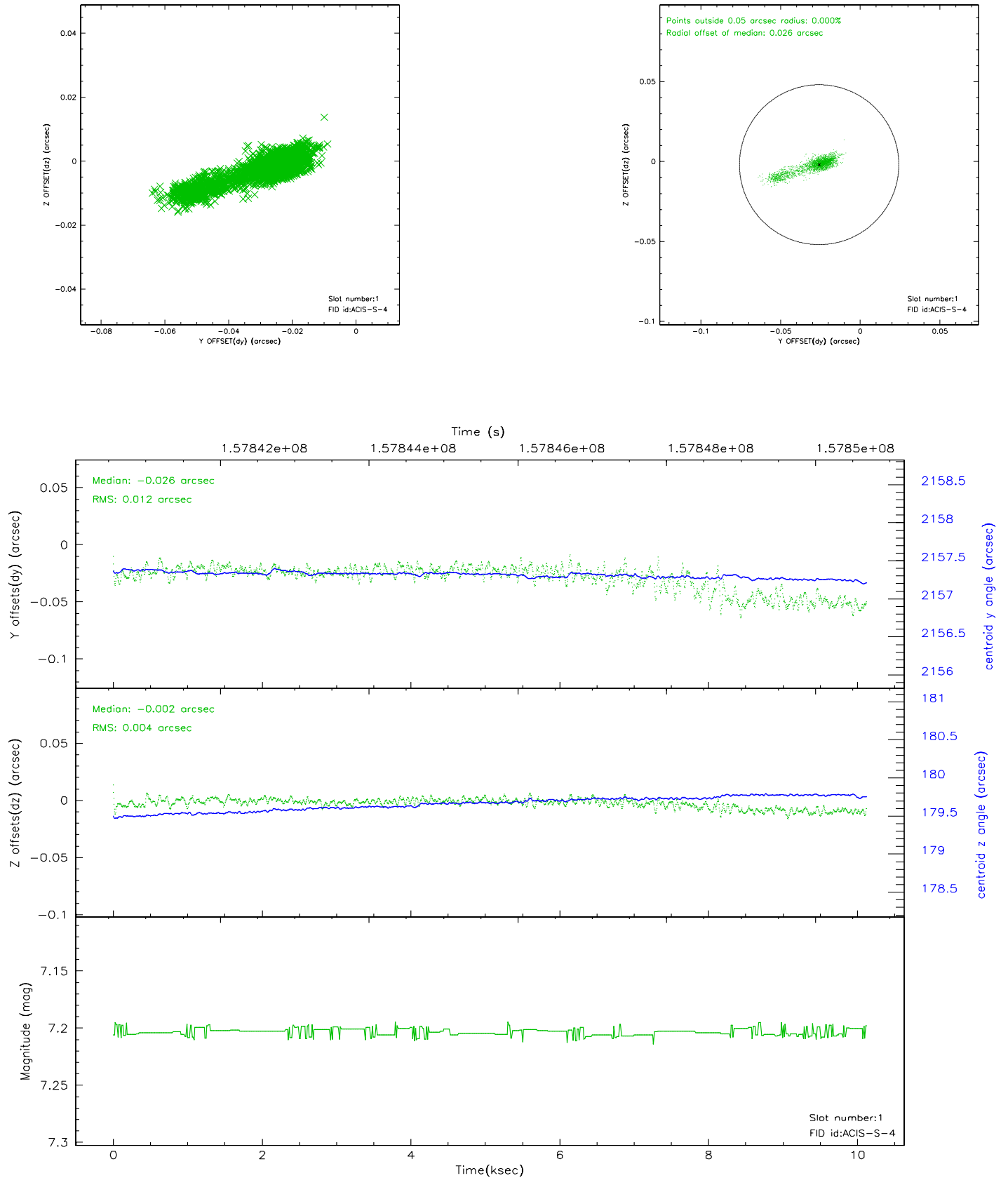


2.5 FID Slots

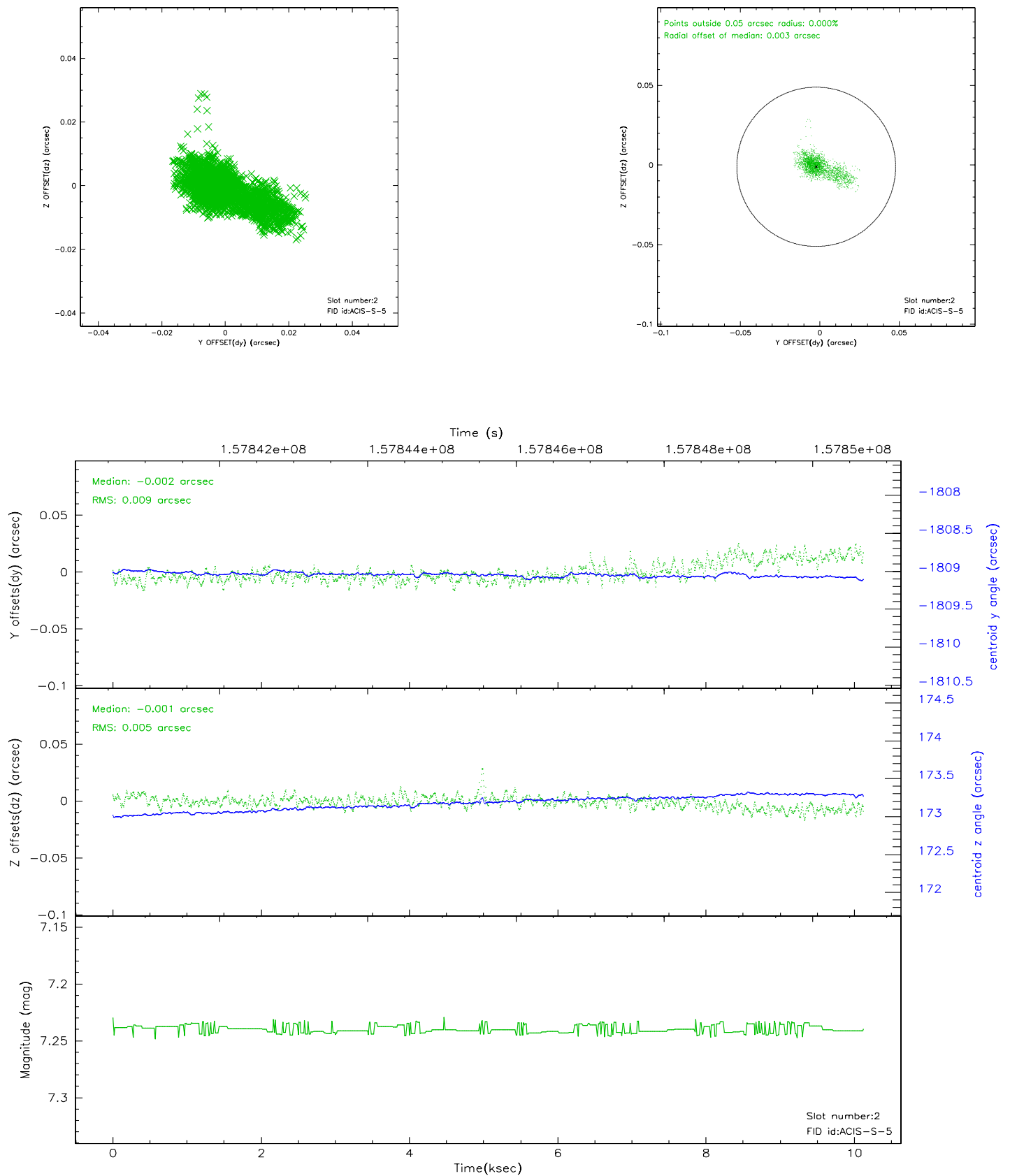
2.5.1 Slot 0



2.5.2 Slot 1



2.5.3 Slot 2



3 Point Sources

16.66 arcmin



A Summary

A.1 Status

V&V Scientist	Beth Sundheim
V&V Date (YYYY-MM-DD)	2006.10.18
V&V Edition	1
V&V Disposition and Status	OK
V&V Charge Time	9.507

A.2 Comments