

# V&V Reference Report

## L2 ASCDS Version : 7.6.8

Observation 3522 - L2 Version 001  
Chandra X-Ray Center

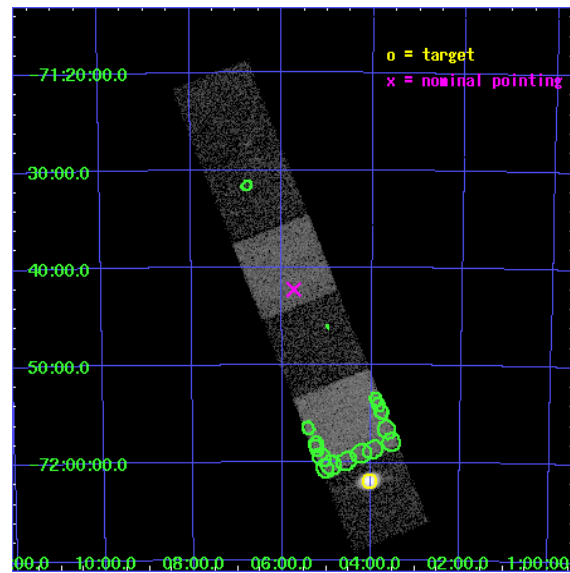
L2 Processing Date : Jul 20 2006

## Contents

<b>1</b>	<b>Front</b>	<b>2</b>
<b>2</b>	<b>OBI</b>	<b>3</b>
2.1	OBI . . . . .	3
2.1.1	Images . . . . .	3
2.1.2	Bias . . . . .	3
2.1.3	Parameters . . . . .	4
2.1.4	Events . . . . .	4
2.2	Compared Parameters . . . . .	5
2.3	Aspect . . . . .	6
2.4	Star Slots . . . . .	9
2.4.1	Slot 3 . . . . .	9
2.4.2	Slot 4 . . . . .	10
2.4.3	Slot 5 . . . . .	11
2.4.4	Slot 6 . . . . .	12
2.4.5	Slot 7 . . . . .	13
2.5	FID Slots . . . . .	14
2.5.1	Slot 0 . . . . .	14
2.5.2	Slot 1 . . . . .	15
2.5.3	Slot 2 . . . . .	16
<b>3</b>	<b>Point Sources</b>	<b>17</b>
<b>A</b>	<b>Summary</b>	<b>18</b>
A.1	Status . . . . .	18
A.2	Comments . . . . .	18

# 1 Front

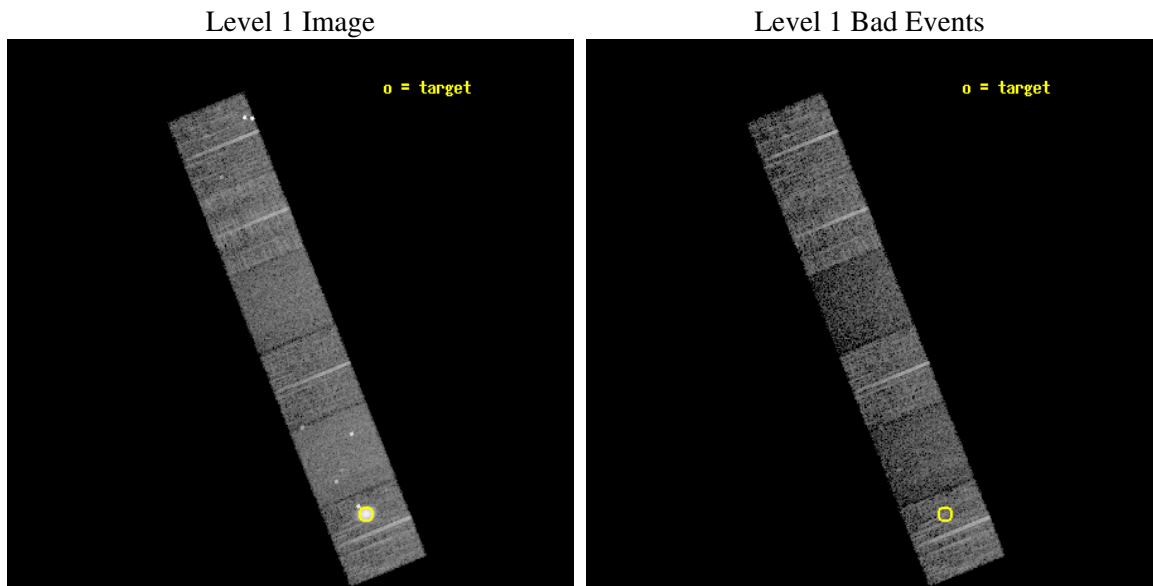
seq_num	590277
obs_id	3522
title	AO4A ACIS-S CALIBRATION OBSERVATIONS OF E0102-72
observer	Dr. CXC Calibration
object	E0102-72[S0,-120,21.44,0,0]
dtcycle	0
cycle	P
ra_targ	16.01
dec_targ	-72.032028
ra_nom	16.433865542133
dec_nom	-71.704231257868
roll_nom	248.17092654358
revision	2
ontime	7932.799970448
livetime	7832.3500806635
ontime4	7932.799970448
ontime5	7932.799970448
ontime6	7932.799970448
ontime7	7932.799970448
ontime8	7932.799970448
ontime9	7932.799970448
l2events	69916



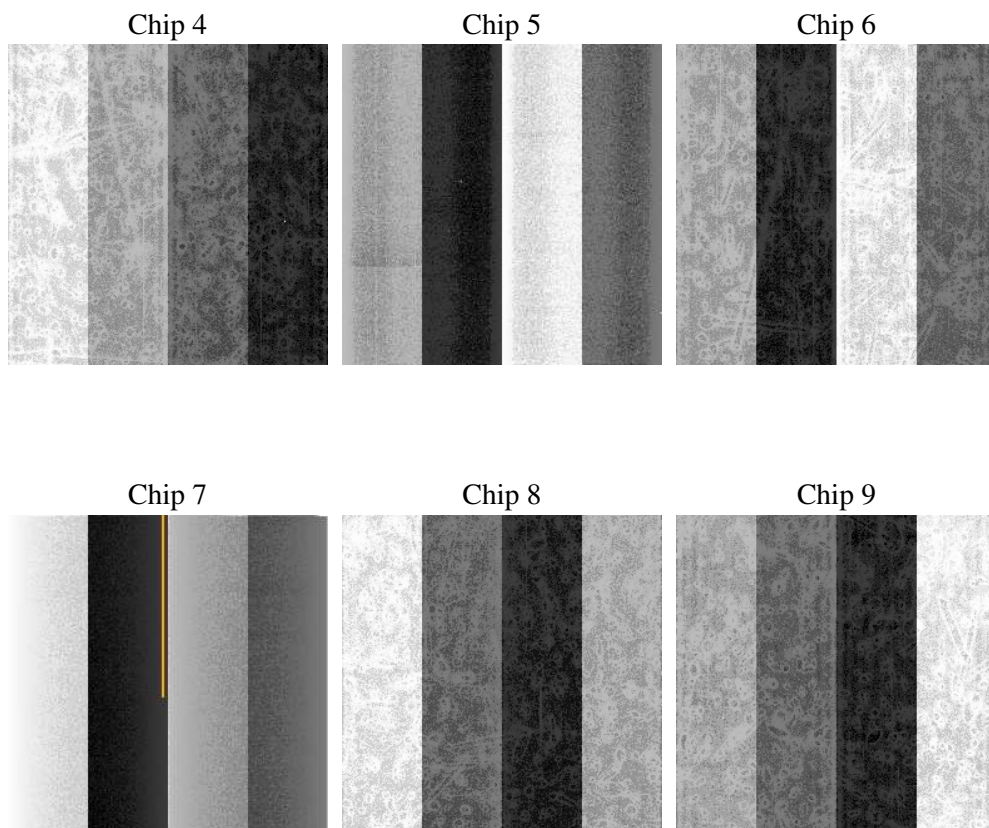
## 2 OBI

### 2.1 OBI

#### 2.1.1 Images



#### 2.1.2 Bias



### 2.1.3 Parameters

obi_num	0
ascdsver	7.6.8
caldbver	3.2.2
date	2006-07-20T13:33:29
revision	2

sched_exp_time	7973.000000
ontime	7937.2086033225
ontime4	7937.2086033225
ontime5	7937.2086232603
ontime6	7937.2086033225
ontime7	7937.2086033225
ontime8	7937.2086033225
ontime9	7937.2086033225
l1events	284260

### 2.1.4 Events

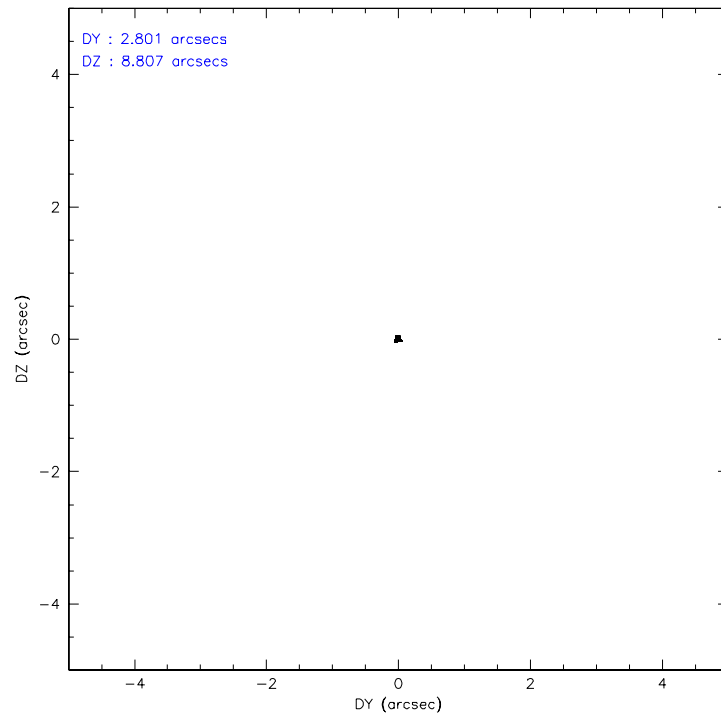
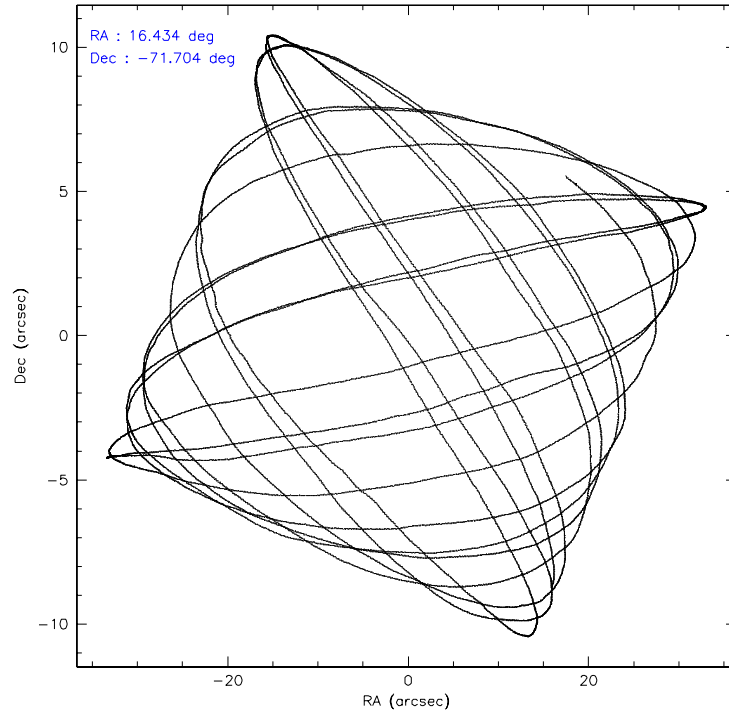
	ccd 4	ccd 5	ccd 6	ccd 7	ccd 8	ccd 9
level 1 events	68364	48095	40225	36285	48909	42382
rejected events	42996	22888	36151	19622	38188	33478
rejected %	62%	47%	89%	54%	78%	78%

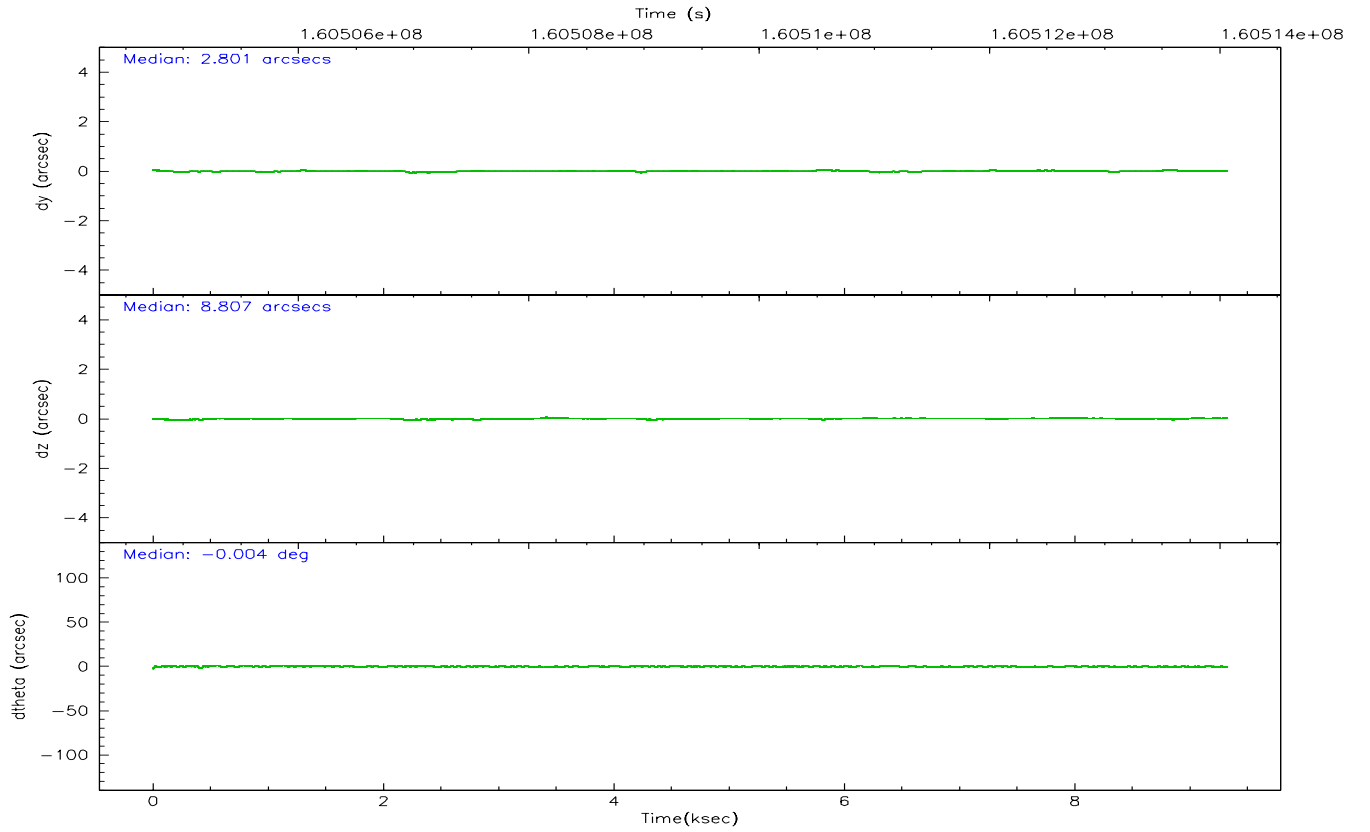
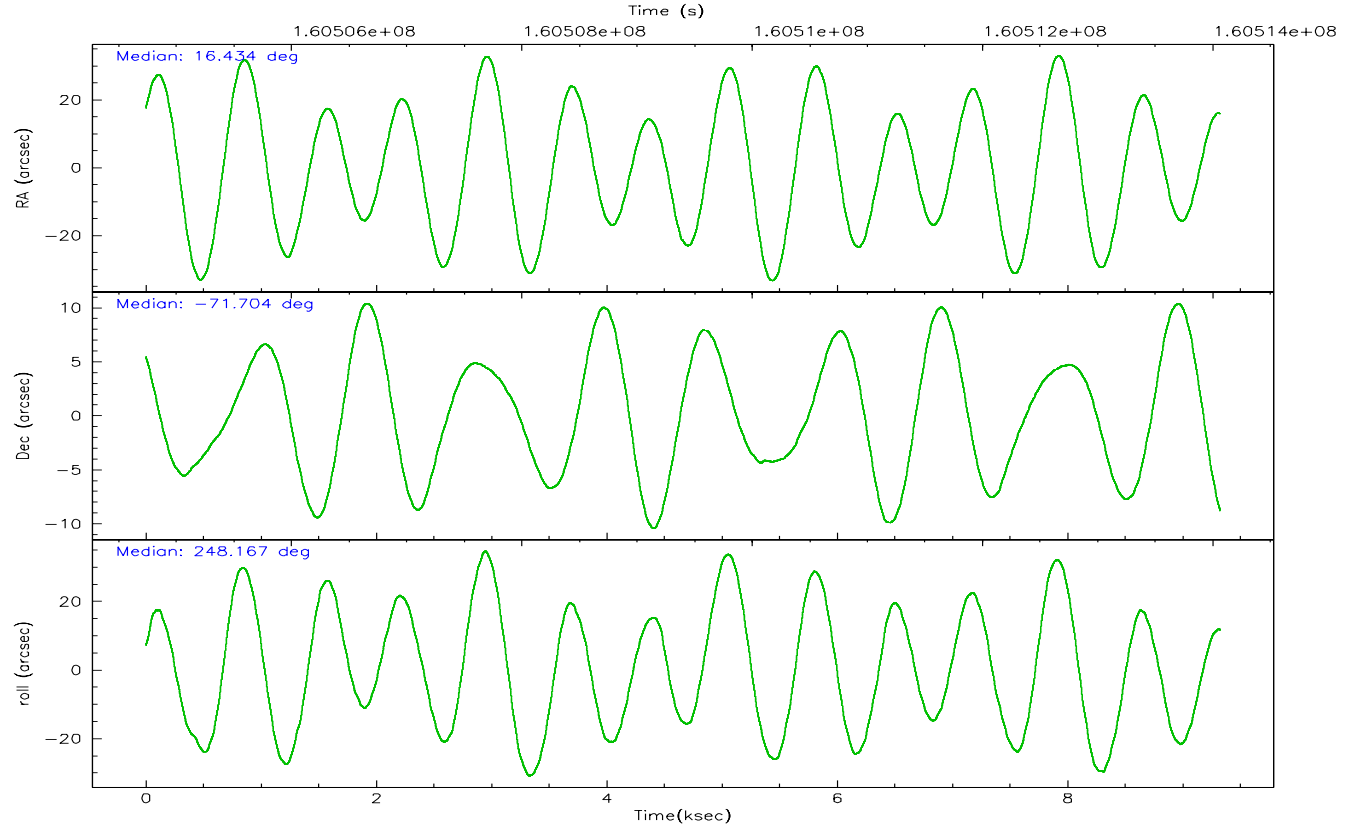
	ccd 4	ccd 5	ccd 6	ccd 7	ccd 8	ccd 9
grade 0 events	21094	3087	1514	1198	3037	4044
	30%	6%	3%	3%	6%	9%
grade 1 events	126	64	18	36	38	47
	0%	0%	0%	0%	0%	0%
grade 2 events	2194	7572	843	4258	2504	3094
	3%	15%	2%	11%	5%	7%
grade 3 events	686	730	478	1040	1281	438
	1%	1%	1%	2%	2%	1%
grade 4 events	710	724	463	1052	1164	457
	1%	1%	1%	2%	2%	1%
grade 5 events	1302	2641	1287	2948	1896	1387
	1%	5%	3%	8%	3%	3%
grade 6 events	709	13109	778	9128	2736	878
	1%	27%	1%	25%	5%	2%
grade 7 events	41543	20168	34844	16625	36253	32037
	60%	41%	86%	45%	74%	75%

## 2.2 Compared Parameters

Parameter	Planned	Actual	Parameter	Planned	Actual
Instrument	ACIS	ACIS	Obspar format version number	6	6
Detector	ACIS-456789	ACIS-456789	Obspar file type	PREDICTED	ACTUAL
Grating	NONE	NONE	Obspar update status	NONE	UPDATED
Data mode	VFAINT	VFAINT	On-chip summing requested	N	N
Observation mode	POINTING	POINTING	Subarray requested	NONE	NONE
Pointing RA	16.420303	16.43386554213325	Alternating exposures requested	N	N
Pointing Dec	-71.677336	-71.70423125786817	Primary exposure time	0.000000	3.2
Pointing Roll	248.001430	248.1709265435769			
Window start time	159019264.184000	159019264.184000			
Window stop time	161697664.184000	161697664.184000			
SIM focus pos (mm)	-0.684267	-0.6828225247311905			
SIM defocus (mm)	0	0.001444936568705701			
SIM translation stage pos (mm)	-190.132523	-190.1425803651734			
SIM translation stage offset (mm)	0	0.01005778216563158			
Observation start time	160506086.184000	160504540.66941			
Observation start date	2003-02-01T17:00:22	2003-02-01T16:35:40			
Observation end time	160514059.184000	160514193.09481			
Observation end date	2003-02-01T19:13:15	2003-02-01T19:16:33			
Read mode	TIMED	TIMED			

## 2.3 Aspect





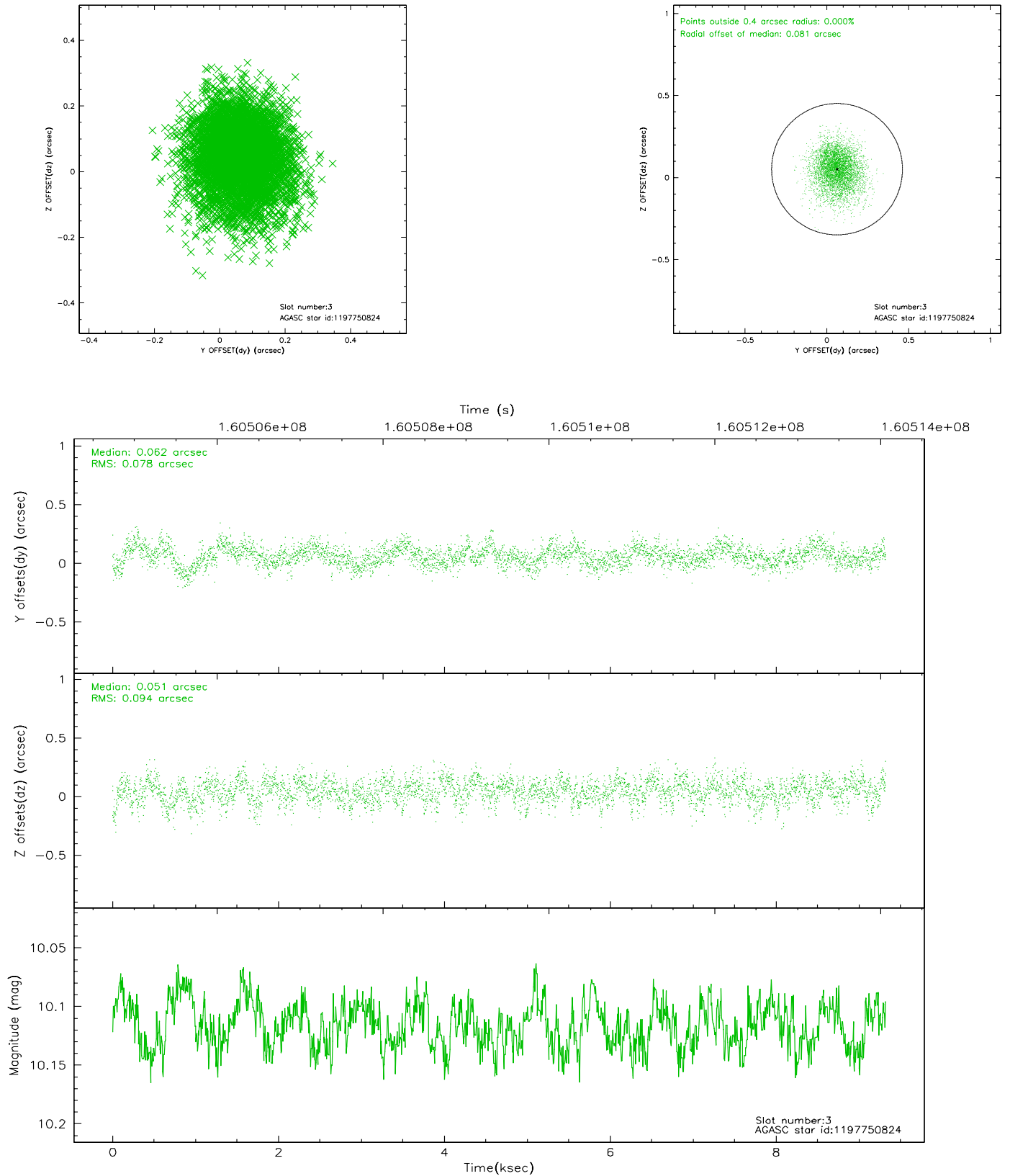
### Slot Statistics

slot	status	id	mag	n_pts	med_dy	med_dz	dr1	dr2	ra	dec	mean_y	mean_z
0	FID	ACIS-S-2	7.11	2273	-0.009	0.013	0.006	0.010	0.000000	0.000000	-755.44	-1729.96
1	FID	ACIS-S-4	7.20	2274	-0.048	0.001	0.005	0.009	0.000000	0.000000	2157.53	177.92
2	FID	ACIS-S-5	7.24	2275	0.027	-0.005	0.006	0.010	0.000000	0.000000	-1807.50	172.23
3	GUIDE	1197750824	10.12	4546	0.062	0.051	0.130	0.214	14.791487	-71.393477	-222.82	-2107.50
4	GUIDE	1197877680	9.95	4405	0.038	0.056	0.118	0.196	16.468092	-71.021668	-2208.93	-832.73
5	GUIDE	1197884712	8.31	4548	-0.067	-0.068	0.069	0.110	16.087398	-72.252690	2058.05	437.73
6	GUIDE	1197885328	7.23	4549	0.036	0.049	0.075	0.146	16.283090	-71.733943	247.71	-66.45
7	GUIDE	1197885104	9.36	4548	-0.074	-0.068	0.114	0.172	17.845067	-72.189368	1139.16	2152.21

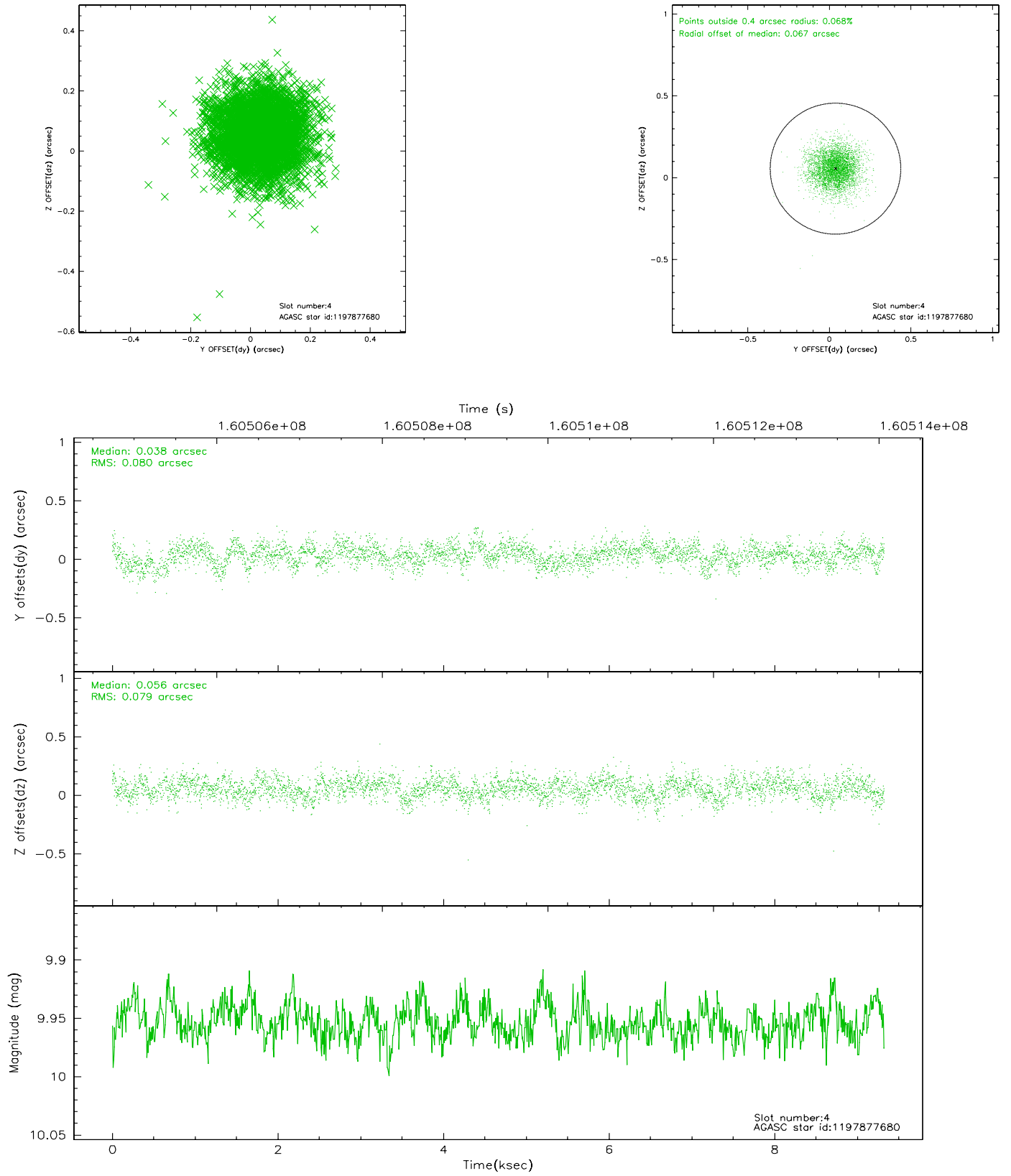


## 2.4 Star Slots

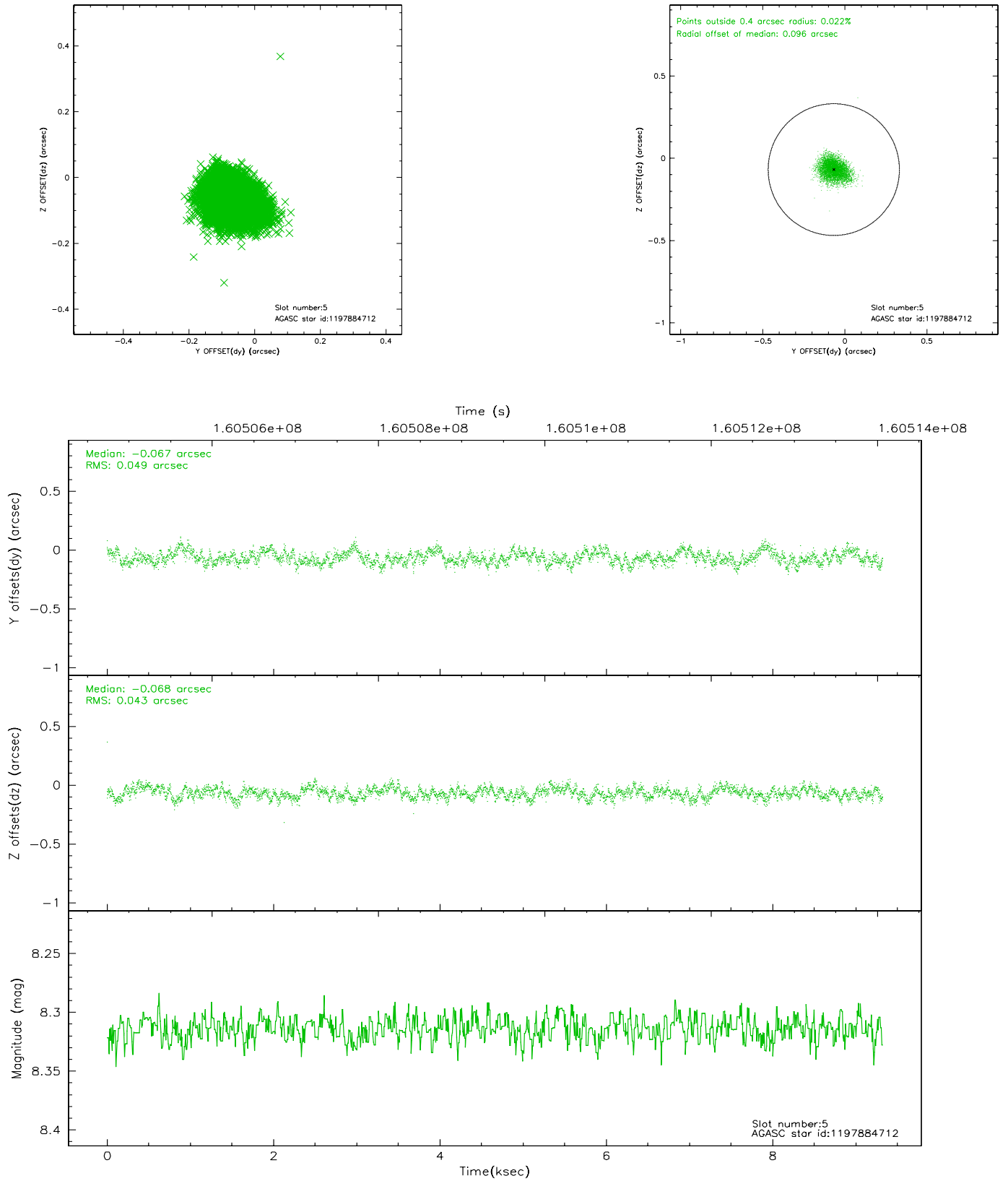
### 2.4.1 Slot 3



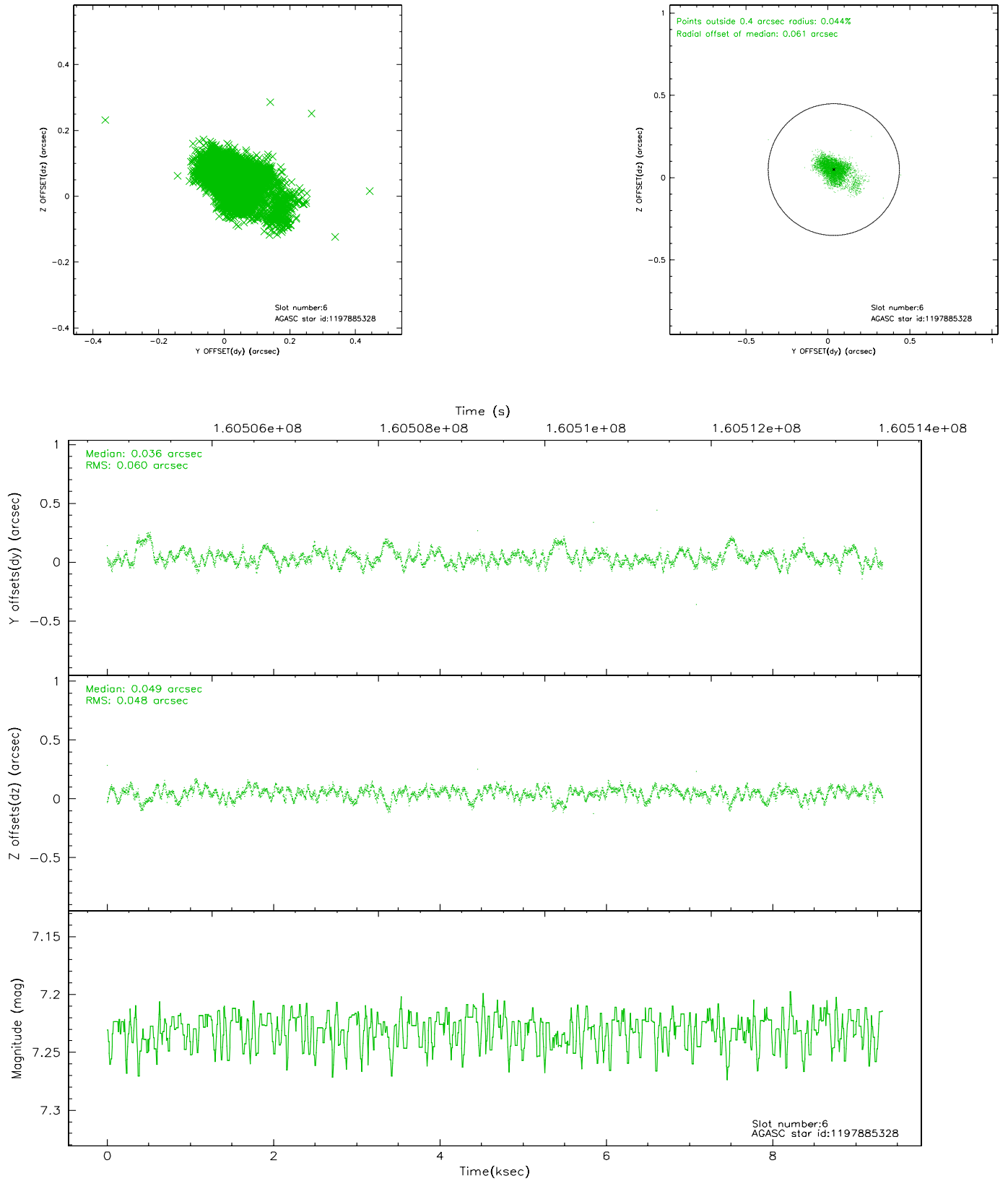
## 2.4.2 Slot 4



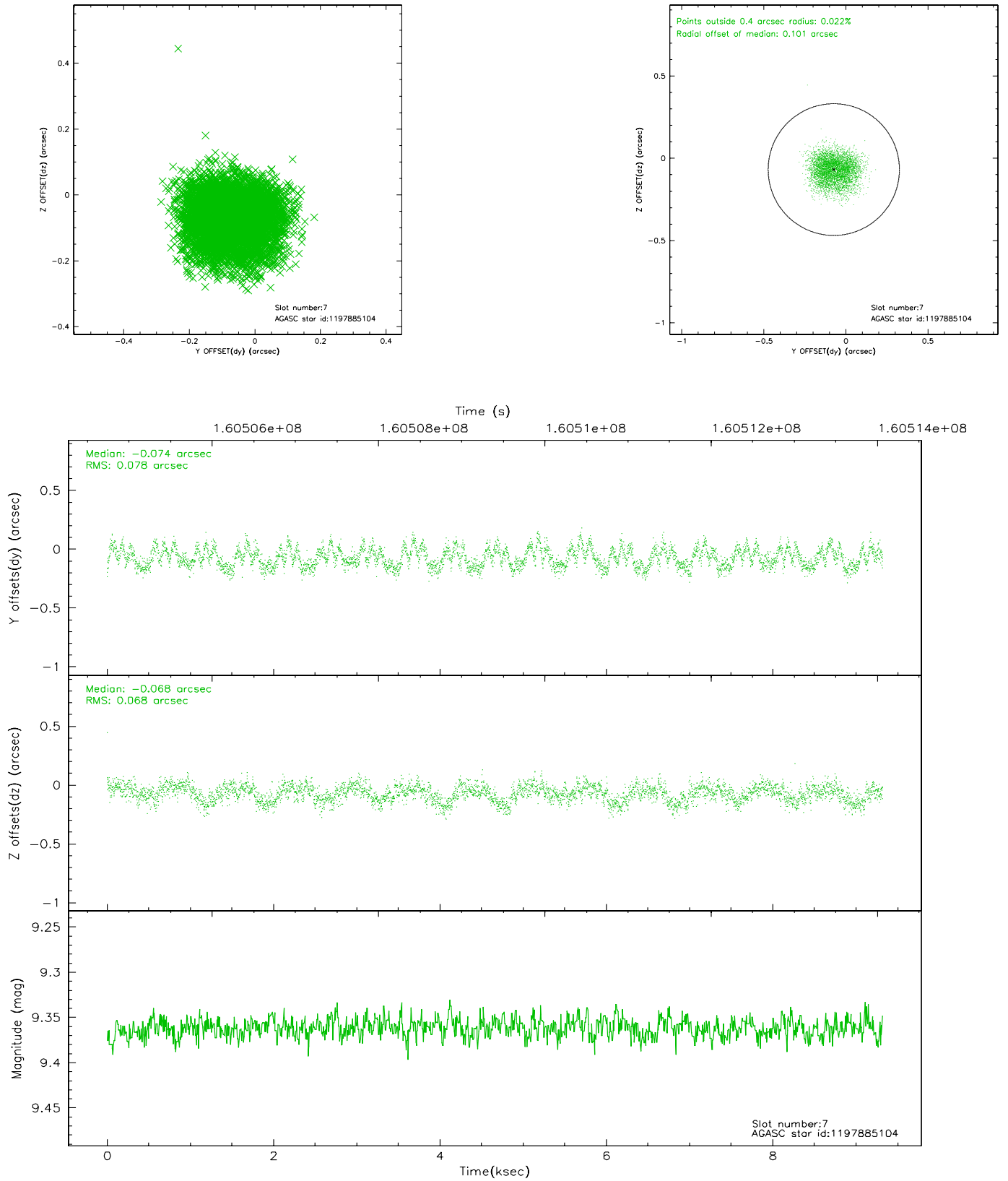
### 2.4.3 Slot 5



## 2.4.4 Slot 6

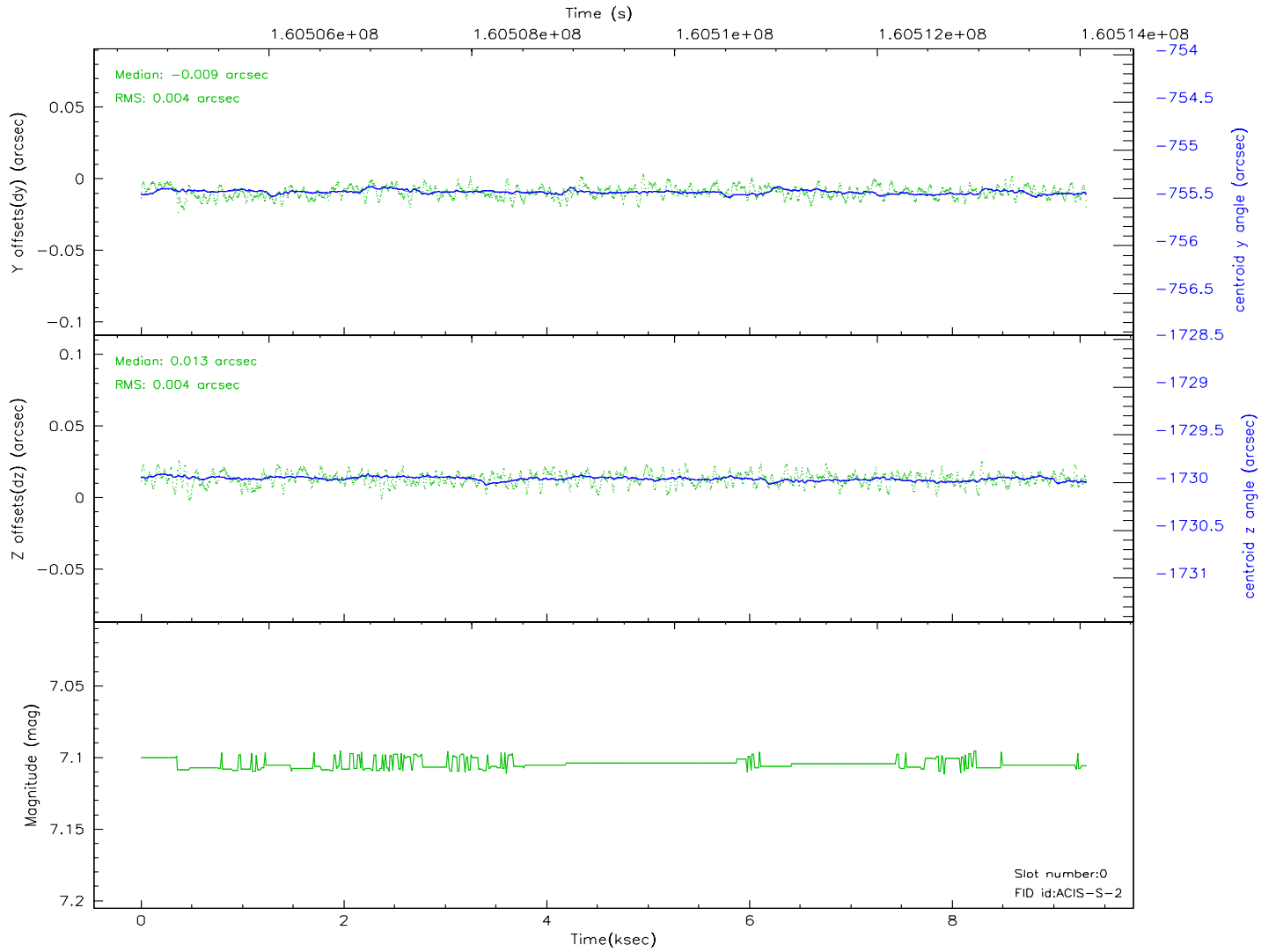
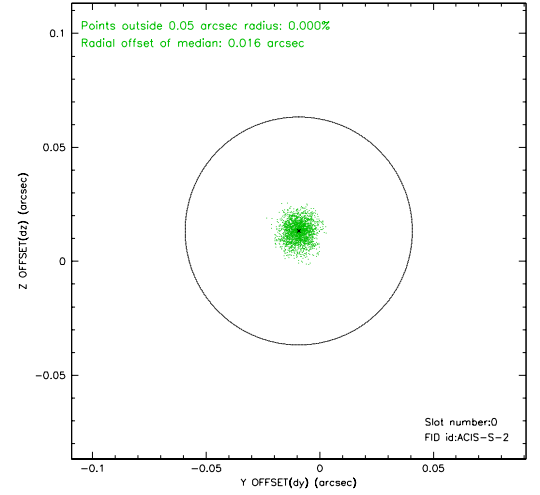
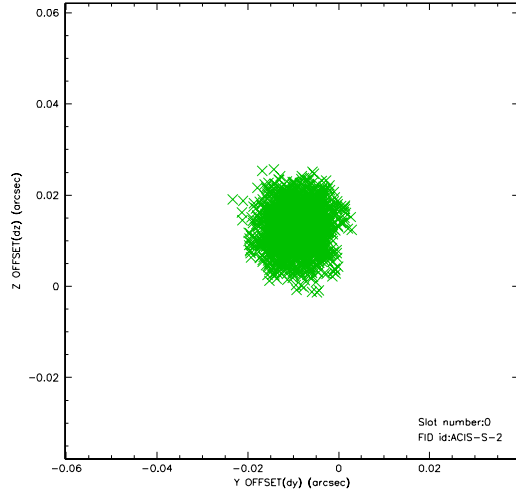


## 2.4.5 Slot 7

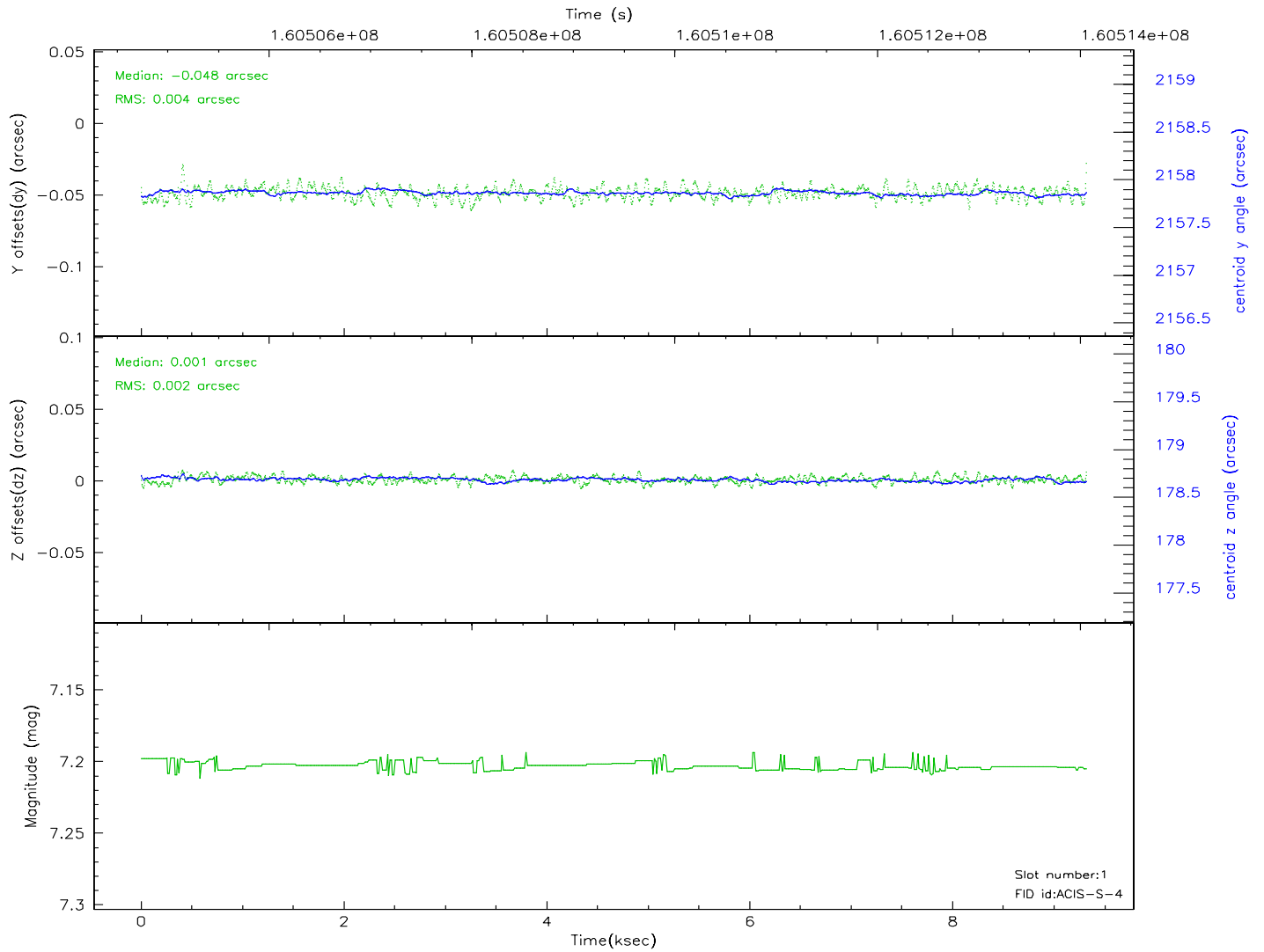
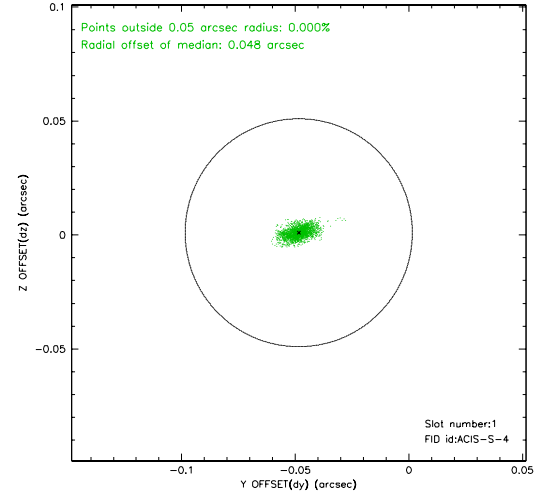
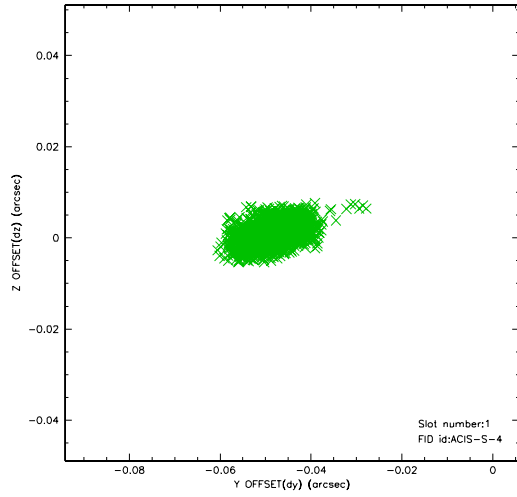


## 2.5 FID Slots

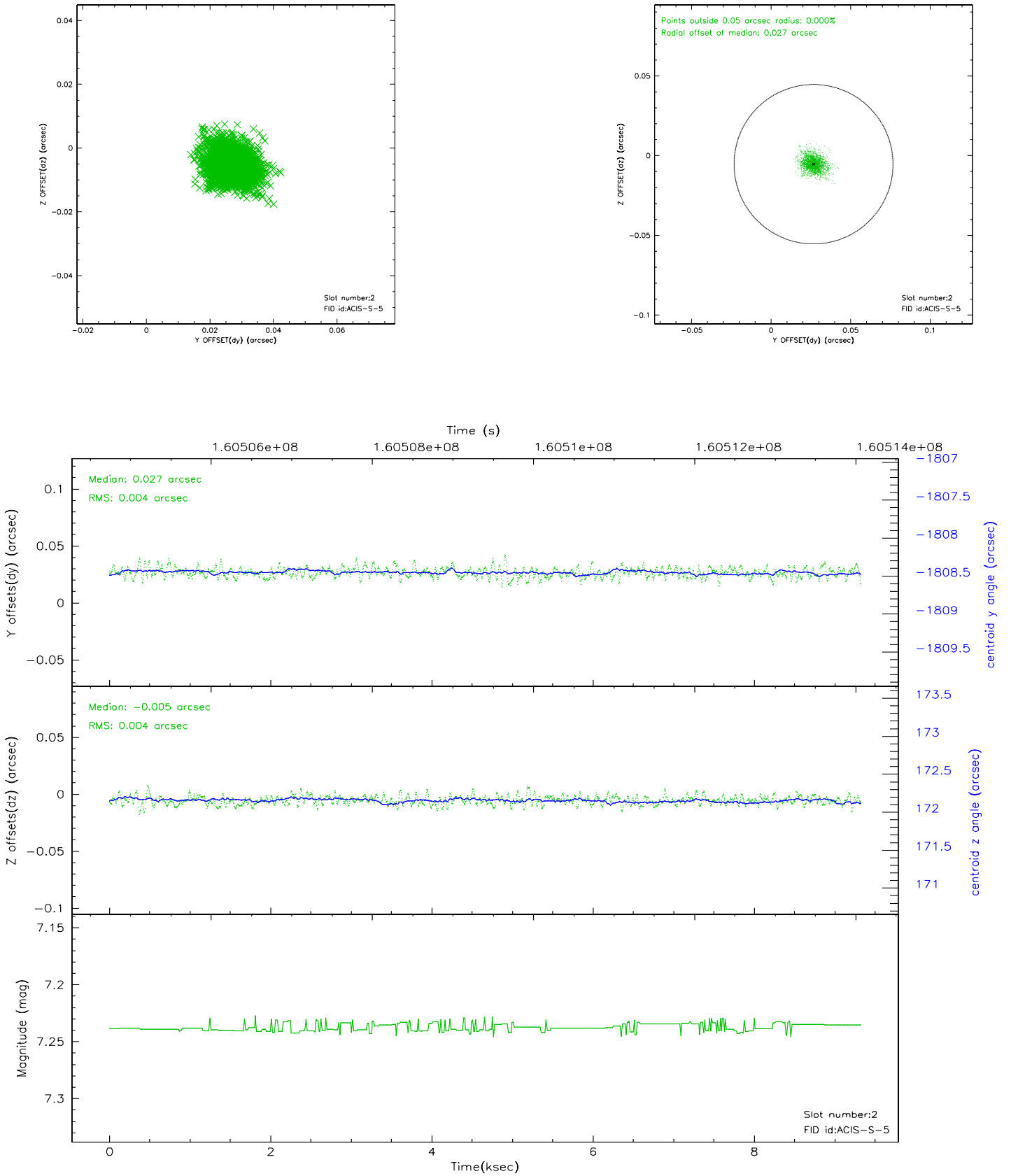
### 2.5.1 Slot 0



## 2.5.2 Slot 1

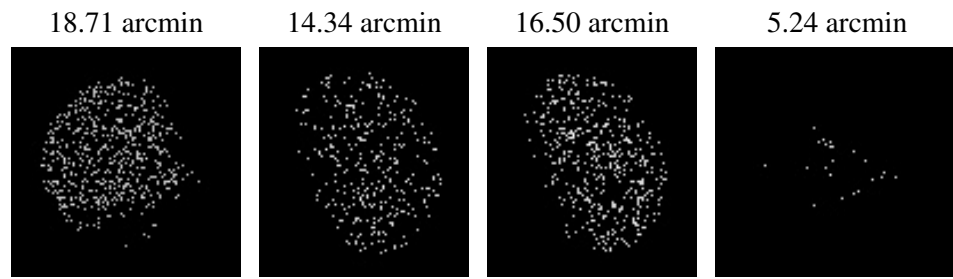


### 2.5.3 Slot 2





### 3 Point Sources



# A Summary

## A.1 Status

V&V Scientist	Jen Lauer
V&V Date (YYYY-MM-DD)	2006.07.20
V&V Edition	1
V&V Disposition and Status	OK
V&V Charge Time	7.935

## A.2 Comments

Window constraint met.

The source is away from the aimpoint, and is therefore extended and asymmetric.