

V&V Reference Report

L2 ASCDS Version : 8.4.5

Observation 3512 - L2 Version 3
Chandra X-Ray Center

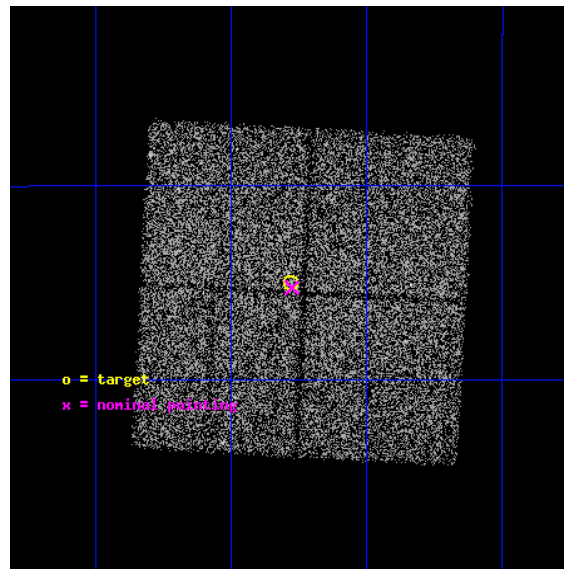
L2 Processing Date : Nov 5 2012

Contents

1	Front	2
2	OBI	3
2.1	OBI	3
2.1.1	Images	3
2.1.2	Bias	3
2.1.3	Parameters	4
2.1.4	Events	4
2.2	Compared Parameters	5
2.3	Aspect	6
2.4	Star Slots	9
2.4.1	Slot 3	9
2.4.2	Slot 4	10
2.4.3	Slot 5	11
2.4.4	Slot 6	12
2.4.5	Slot 7	13
2.5	FID Slots	14
2.5.1	Slot 0	14
2.5.2	Slot 1	15
2.5.3	Slot 2	16
A	Summary	17
A.1	Status	17
A.2	Comments	17

1 Front

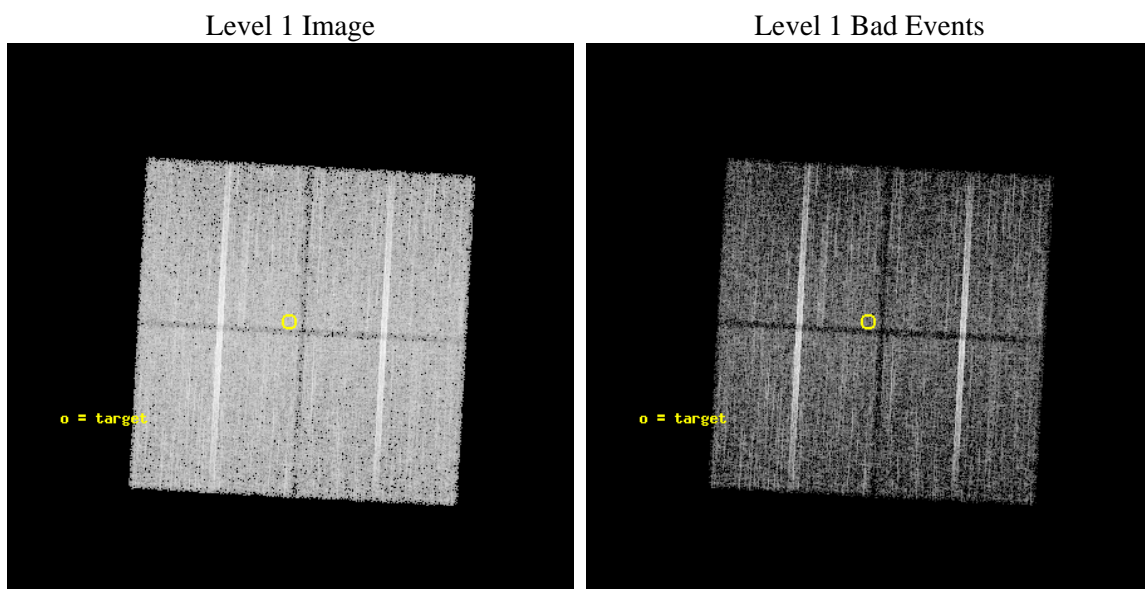
seq_num	500300	Sequence number
obs_id	3512	Observation id
title	OBSERVATION OF SNR G11.4-0.1	Proposal title
observer	Professor Gordon Garmire	Principal investigator
object	G11.4-0.1	Source name
dtcycle	0	
cycle	P	events from which exps? Prim/Second/Both
ra_targ	272.695833	Observer's specified target RA [deg]
dec_targ	-19.083333	Observer's specified target Dec [deg]
ra_nom	272.69417356133	Nominal RA [deg]
dec_nom	-19.087723940214	Nominal Dec [deg]
roll_nom	273.12052617423	Nominal Roll [deg]
revision	3	Processing version of data
ontime	20239.858990848	Sum of GTIs [s]
livetime	19975.410332765	Livetime [s]
ontime0	20242.999961048	Sum of GTIs [s]
ontime1	20239.859000832	Sum of GTIs [s]
ontime2	20242.999961048	Sum of GTIs [s]
ontime3	20239.858990848	Sum of GTIs [s]
l2events	41297	Number of level 2 events



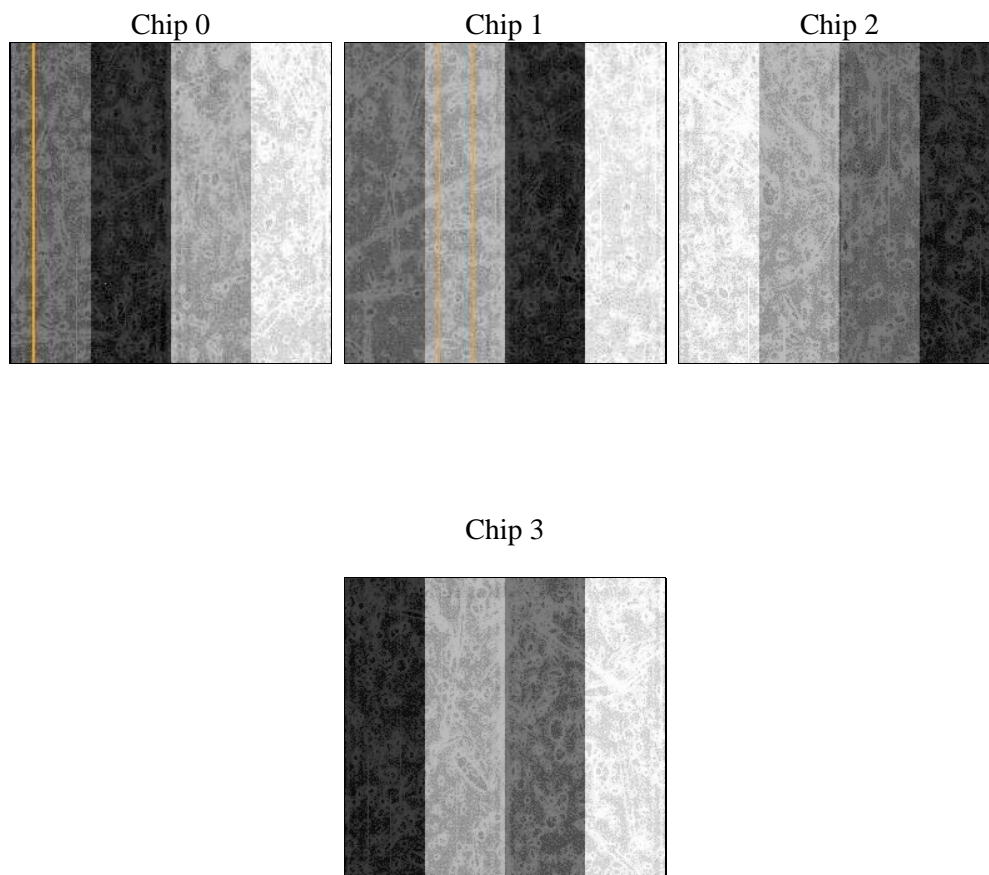
2 OBI

2.1 OBI

2.1.1 Images



2.1.2 Bias



2.1.3 Parameters

obi_num	0	Obi number	sched_exp_time	20000.000000	[s] Scheduled observation exposure time
ascdsver	8.4.5	Processing system revision	ontime	20239.858990848	Sum of GTIs [s]
caldsver	4.5.2	 	ontime0	20242.999961048	Sum of GTIs [s]
date	2012-11-05T19:56:09	Date and time of file creation	ontime1	20239.859000832	Sum of GTIs [s]
revision	3	Processing version of data	ontime2	20242.999961048	Sum of GTIs [s]
			ontime3	20239.858990848	Sum of GTIs [s]
			l1events	420119	Number of level 1 events

2.1.4 Events

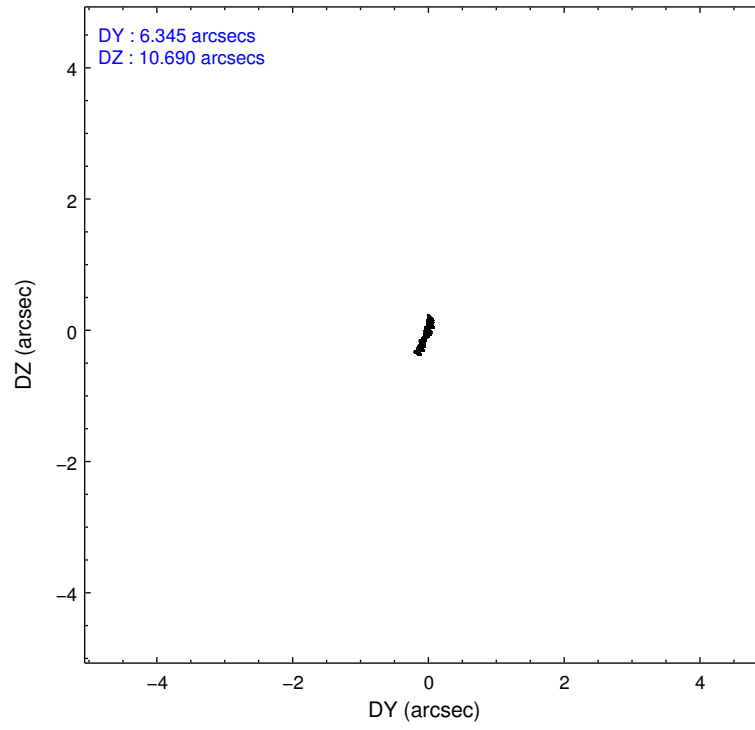
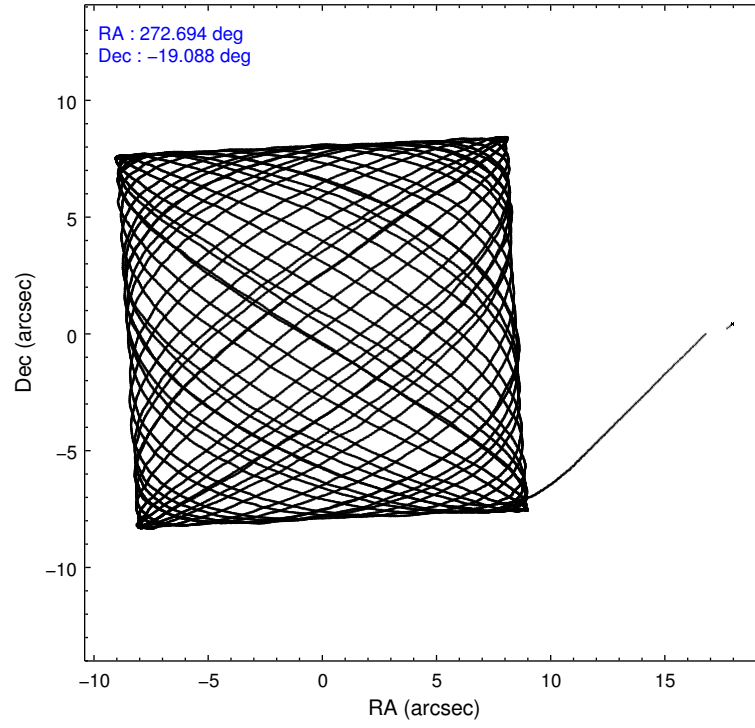
	ccd 0	ccd 1	ccd 2	ccd 3
level 1 events	97461	99394	117322	105942
rejected events	85242	86690	104534	93924
rejected %	87%	87%	89%	88%

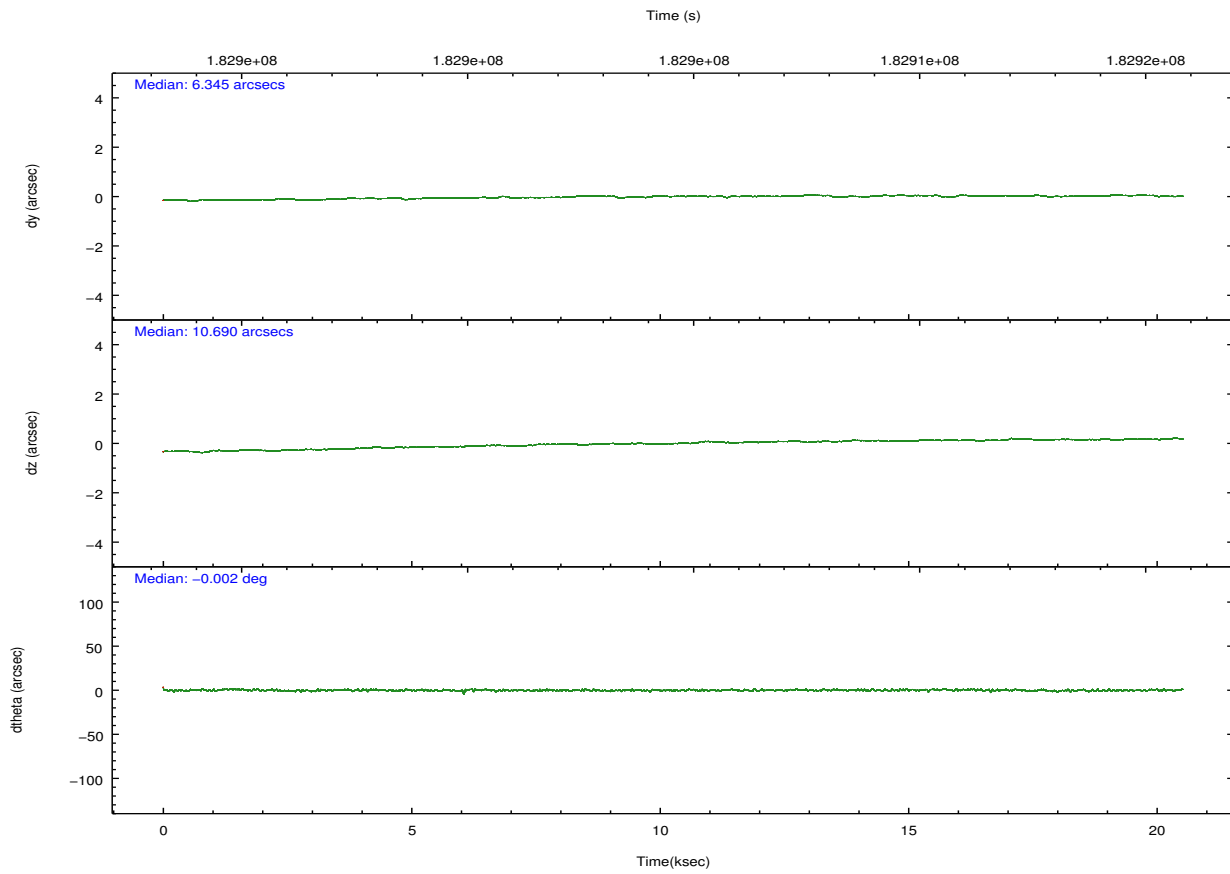
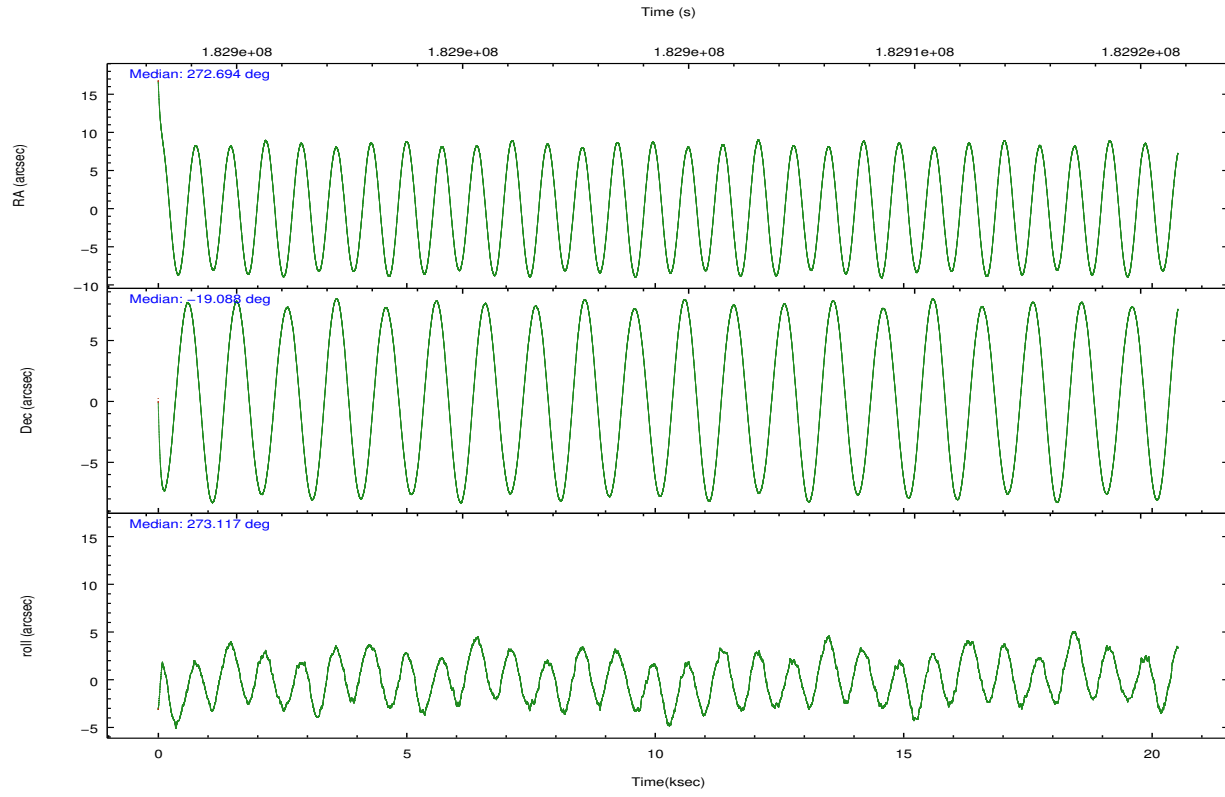
	ccd 0	ccd 1	ccd 2	ccd 3
grade 0 events	5263	5265	5860	5394
	5%	5%	4%	5%
grade 1 events	55	49	81	66
	0%	0%	0%	0%
grade 2 events	2492	2552	2588	2246
	2%	2%	2%	2%
grade 3 events	1335	1373	1197	1304
	1%	1%	1%	1%
grade 4 events	1223	1336	1302	1239
	1%	1%	1%	1%
grade 5 events	3064	3297	2913	3491
	3%	3%	2%	3%
grade 6 events	1909	2182	1845	1840
	1%	2%	1%	1%
grade 7 events	82120	83340	101536	90362
	84%	83%	86%	85%

2.2 Compared Parameters

Parameter	Planned	Actual	Parameter	Planned	Actual
Instrument	ACIS	ACIS	Obspar format version number	7	7
Detector	ACIS-0123	ACIS-0123	Obspar file type	PREDICTED	ACTUAL
Grating	NONE	NONE	Obspar update status	NONE	UPDATED
Data mode	VFAINT	VFAINT	Number of optional ACIS chips dropped	0	0
Observation mode	POINTING	POINTING	On-chip summing requested	N	N
[deg] Pointing RA	272.678235	272.6941735613314	Subarray requested	NONE	NONE
[deg] Pointing Dec	-19.064822	-19.0877239402144	Alternating exposures requested	N	N
[deg] Pointing Roll	272.906642	273.1205261742256	[s] Primary exposure time	0.000000	3.1
[mm] SIM focus pos	-0.782348	-0.7809083437167272			
[mm] SIM defocus	0	0.001439871863259334			
[mm] SIM translation stage pos	-233.592463	-233.5874344608287			
[mm] SIM translation stage offset	0	-0.005018542100998502			
[s] Observation start time (MET)	182894807.184000	182893680.68283			
Observation start date	2003-10-18T20:05:43	2003-10-18T19:48:00			
[s] Observation end time (MET)	182914807.184000	182915603.89627			
Observation end date	2003-10-19T01:39:03	2003-10-19T01:53:23			
Read mode	TIMED	TIMED			

2.3 Aspect



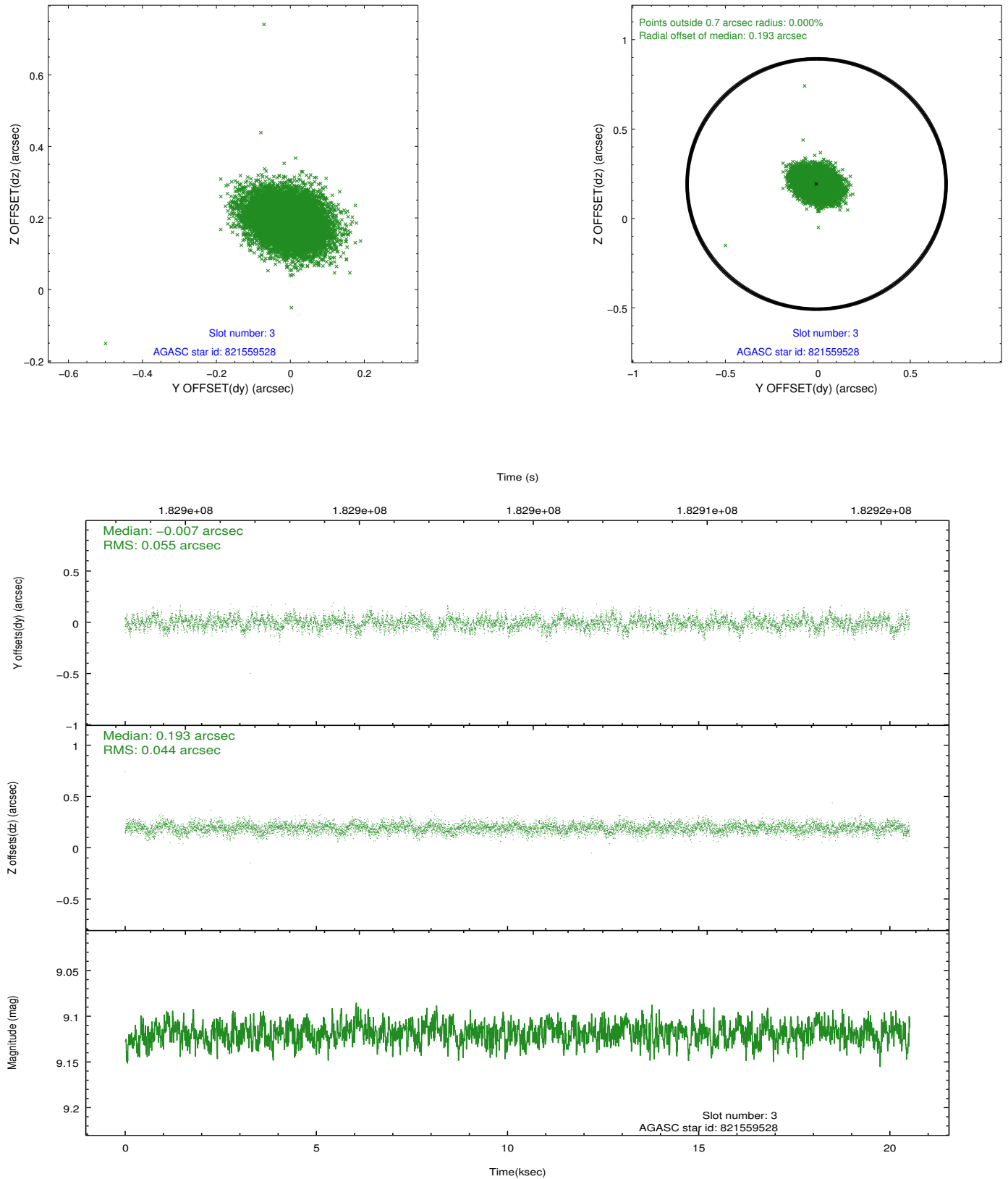


Slot Statistics

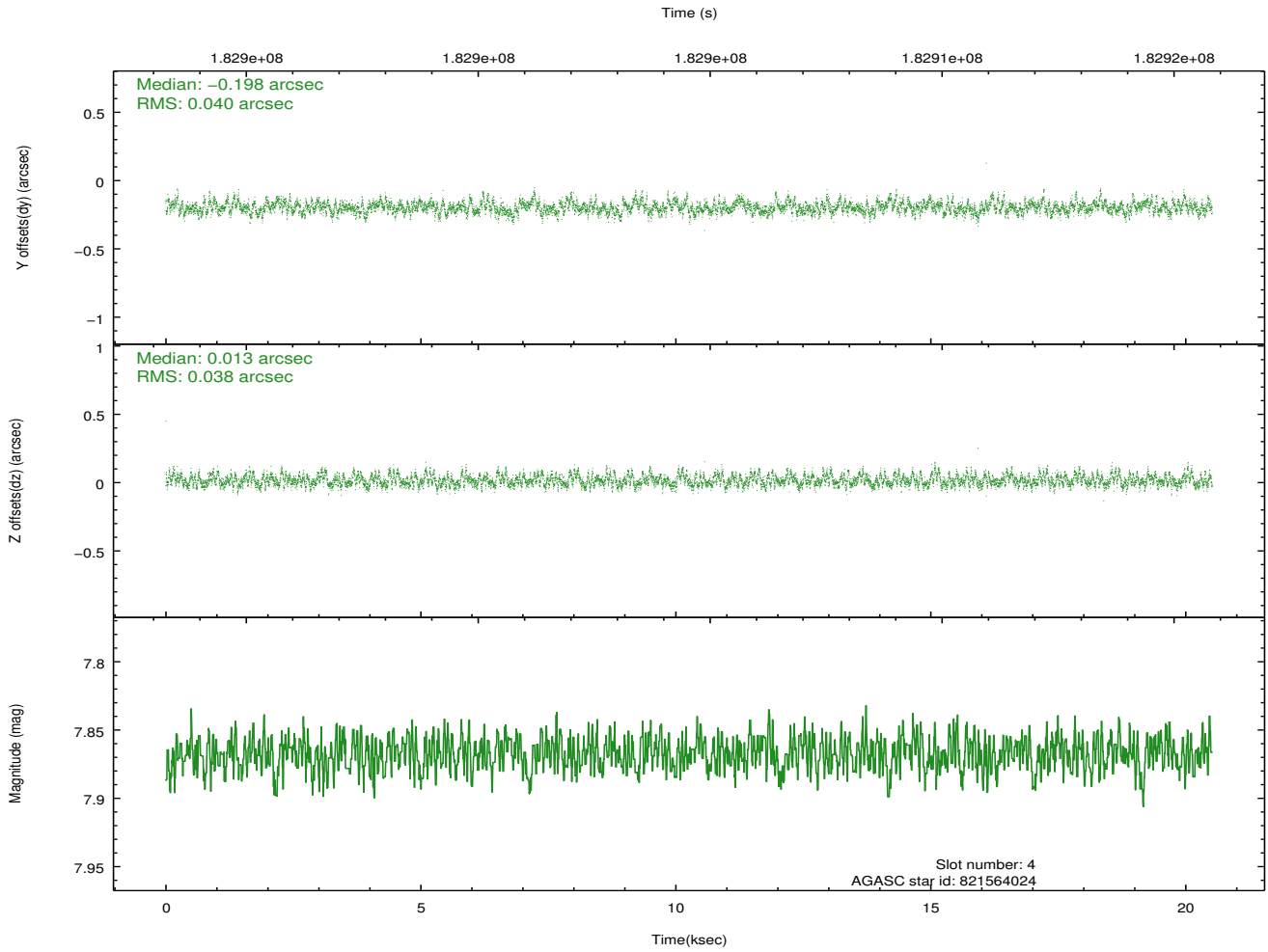
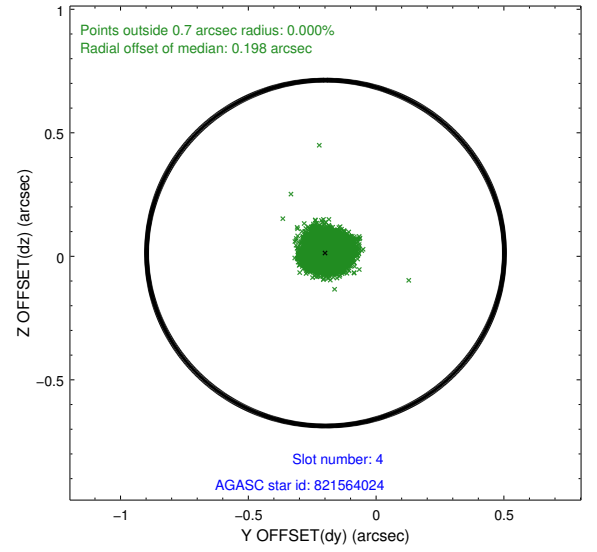
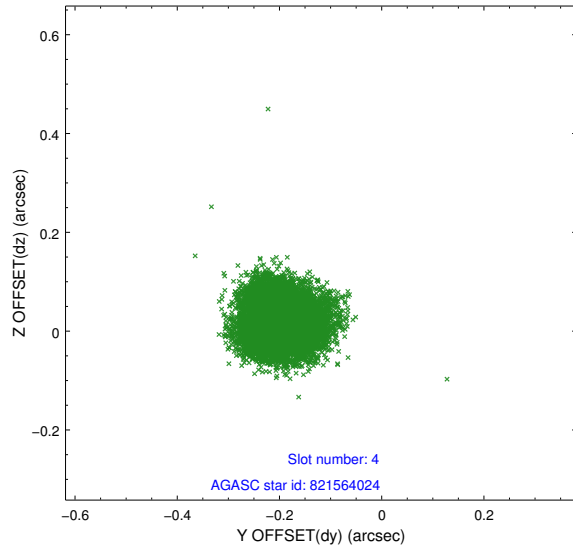
slot	status	id	mag	n_pts	med_dy	med_dz	dr1	dr2	ra	dec	mean_y	mean_z
0	FID	ACIS-I-2	7.14	5003	-0.059	-0.082	0.012	0.020	0.000000	0.000000	-760.85	-840.60
1	FID	ACIS-I-4	7.18	5005	0.088	0.062	0.007	0.011	0.000000	0.000000	2153.27	1065.63
2	FID	ACIS-I-5	7.23	5005	-0.129	0.089	0.011	0.018	0.000000	0.000000	-1814.52	1063.70
3	GUIDE	821559528	9.12	10008	-0.007	0.193	0.073	0.122	272.980625	-18.673858	-1352.31	1101.64
4	GUIDE	821564024	7.87	10006	-0.198	0.013	0.059	0.094	272.759965	-18.547608	-1845.38	373.06
5	GUIDE	821575560	8.11	10008	-0.210	-0.020	0.054	0.085	272.682521	-18.484686	-2085.16	120.66
6	GUIDE	822090992	8.68	10008	0.175	-0.061	0.059	0.097	272.402721	-19.357501	1005.87	-987.82
7	GUIDE	822101176	9.07	9999	0.246	-0.125	0.106	0.168	272.316309	-19.723295	2307.26	-1345.12

2.4 Star Slots

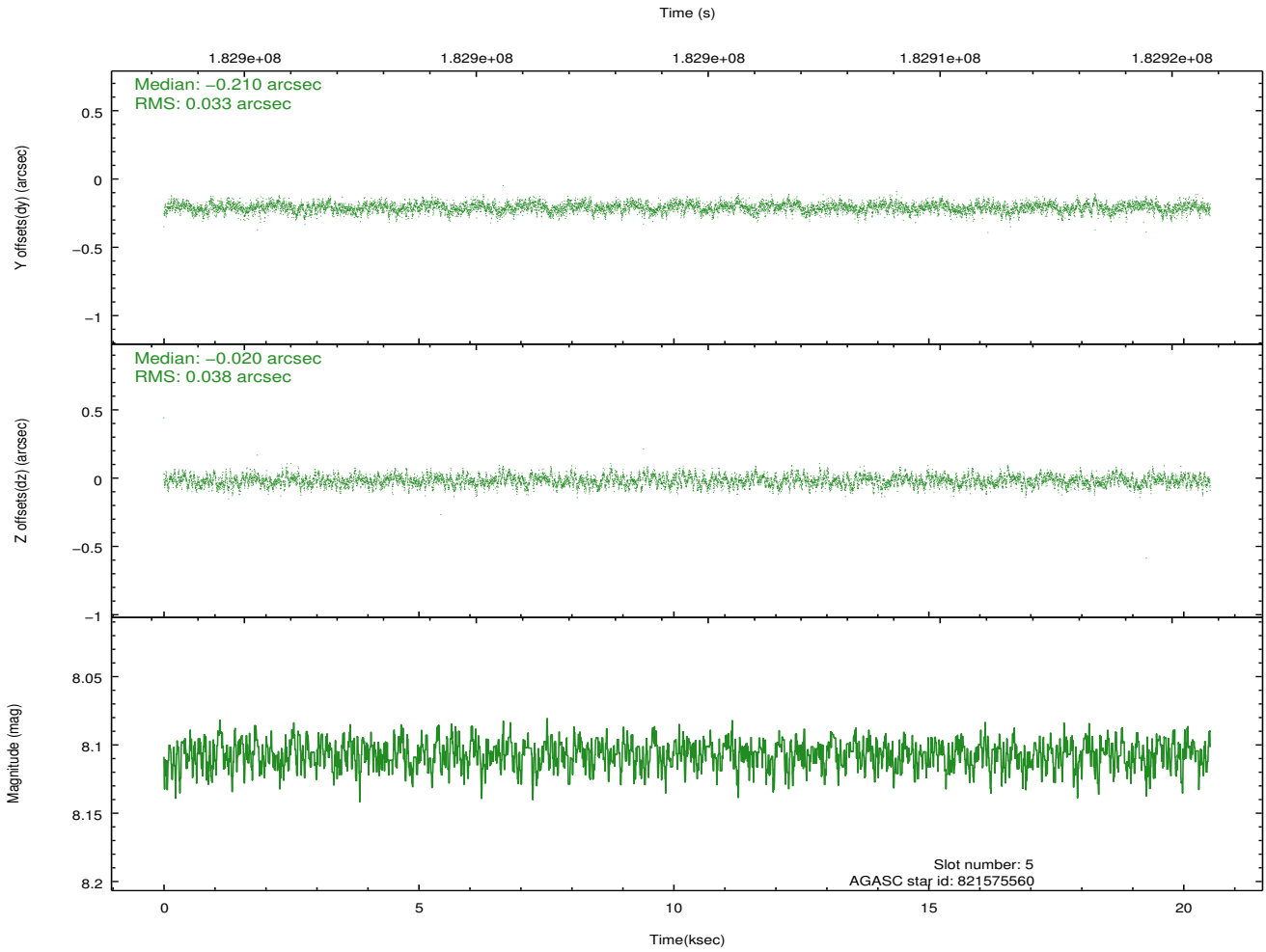
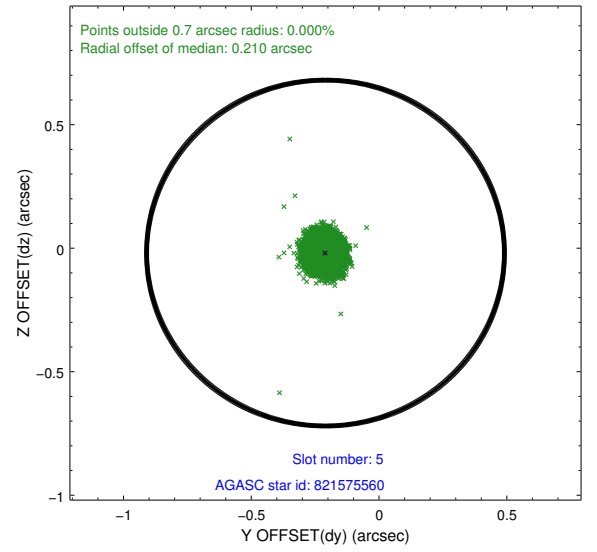
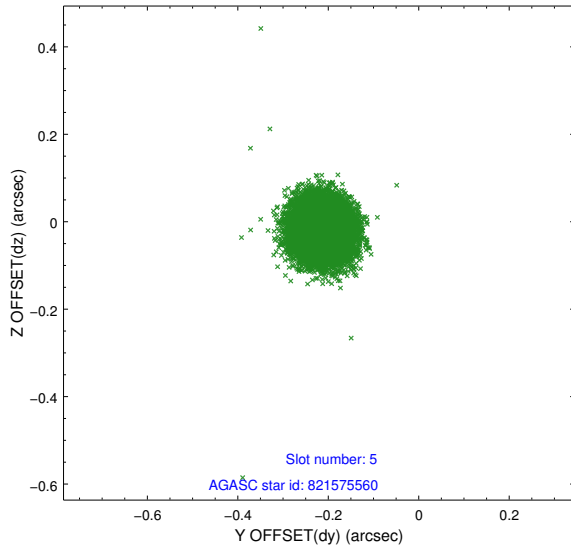
2.4.1 Slot 3



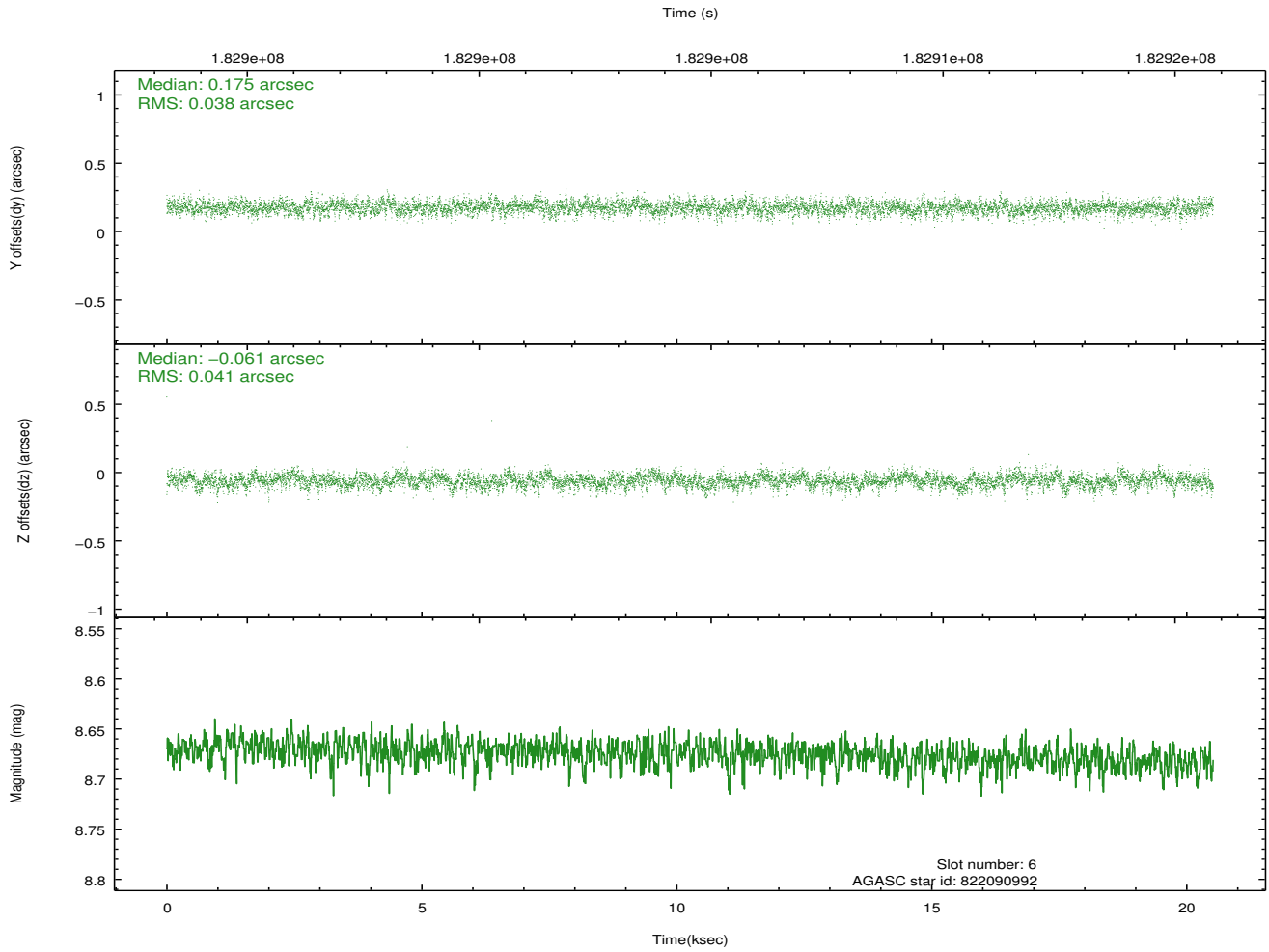
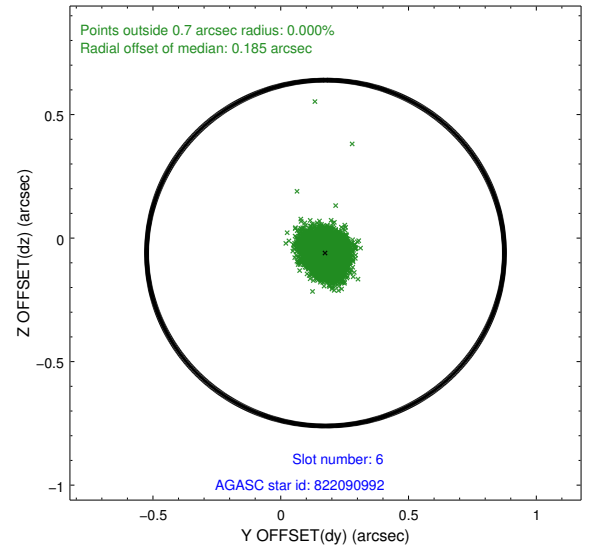
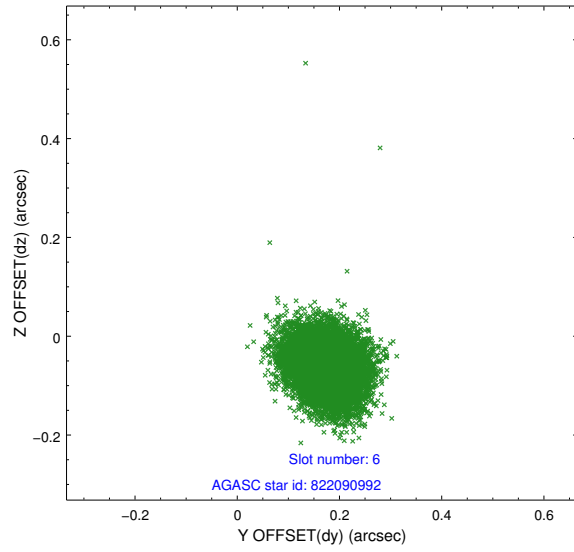
2.4.2 Slot 4



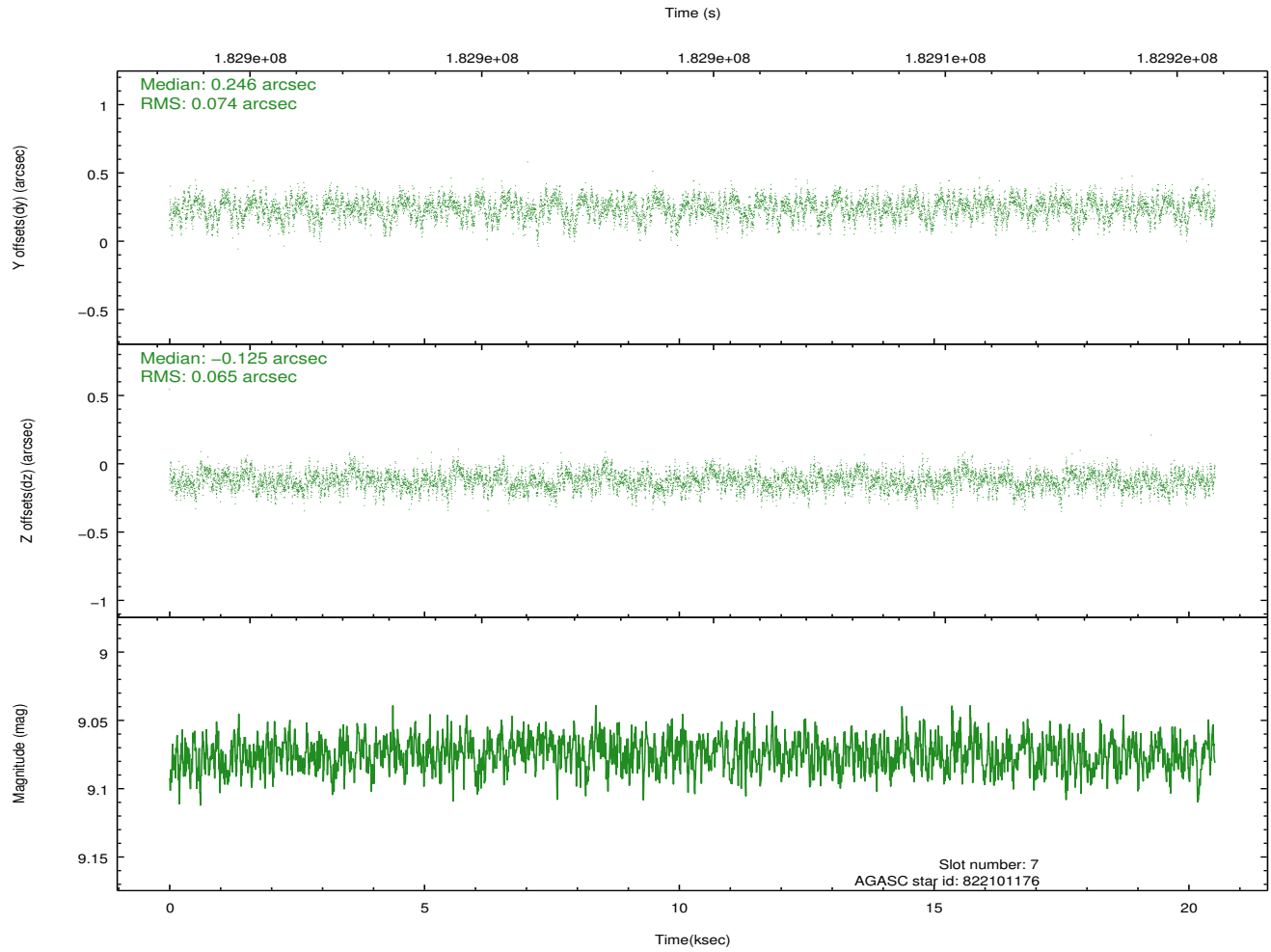
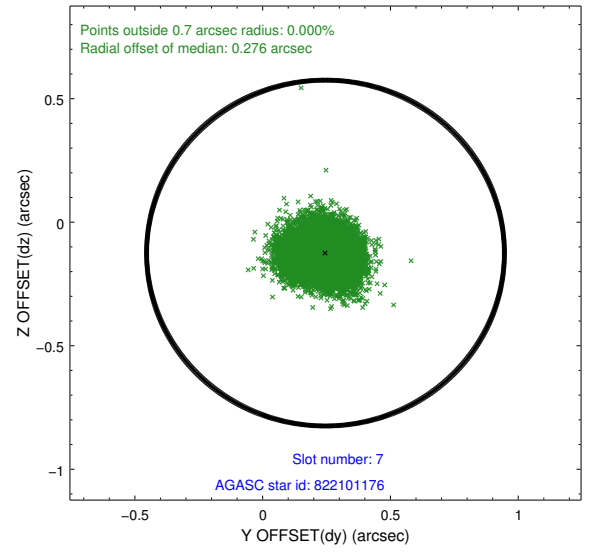
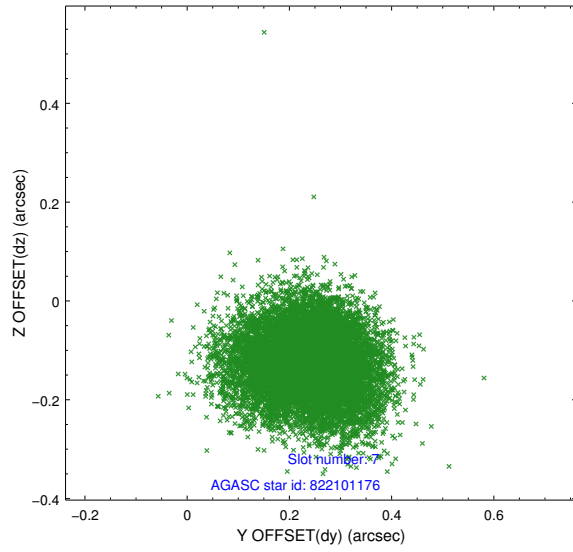
2.4.3 Slot 5



2.4.4 Slot 6

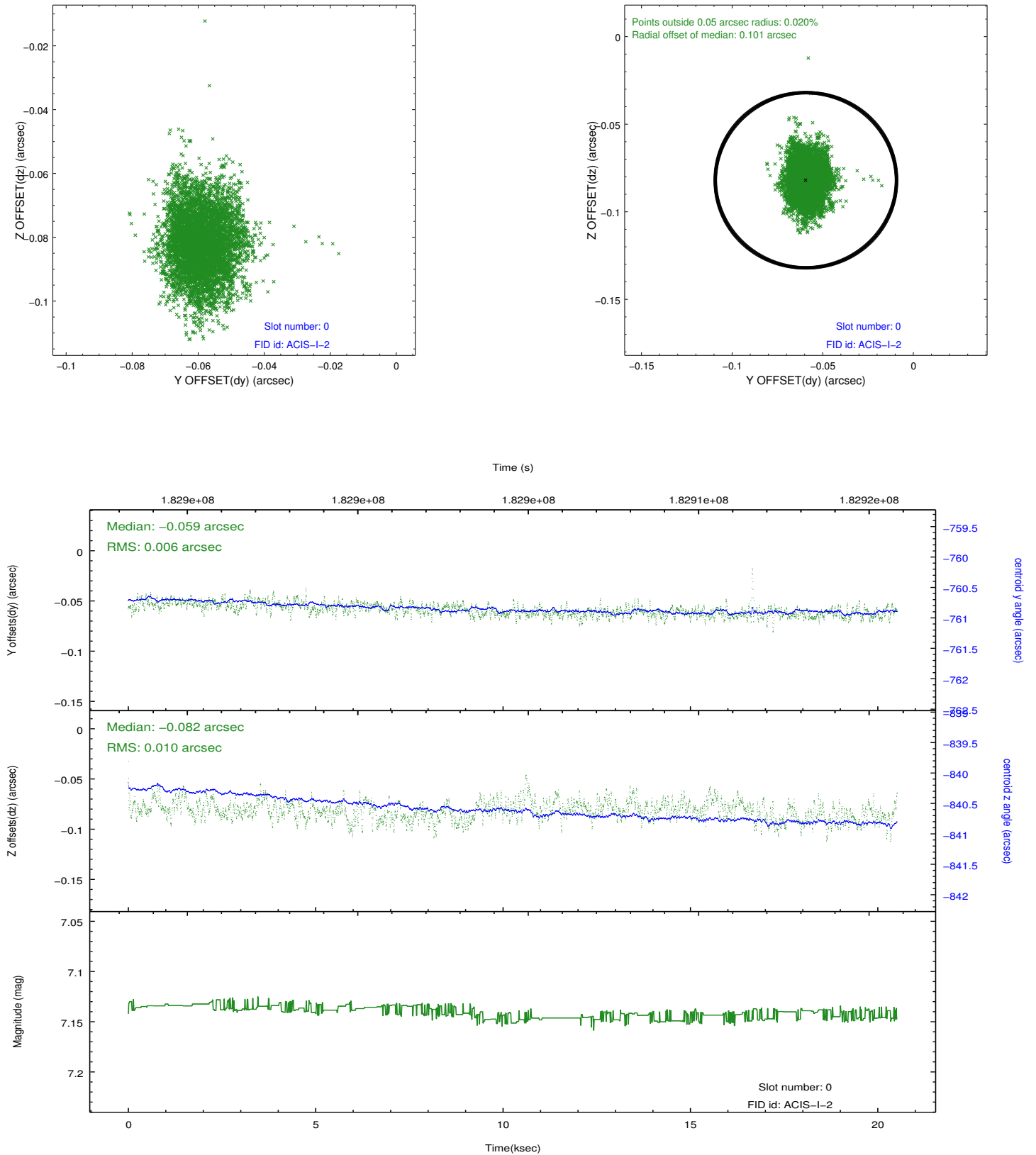


2.4.5 Slot 7

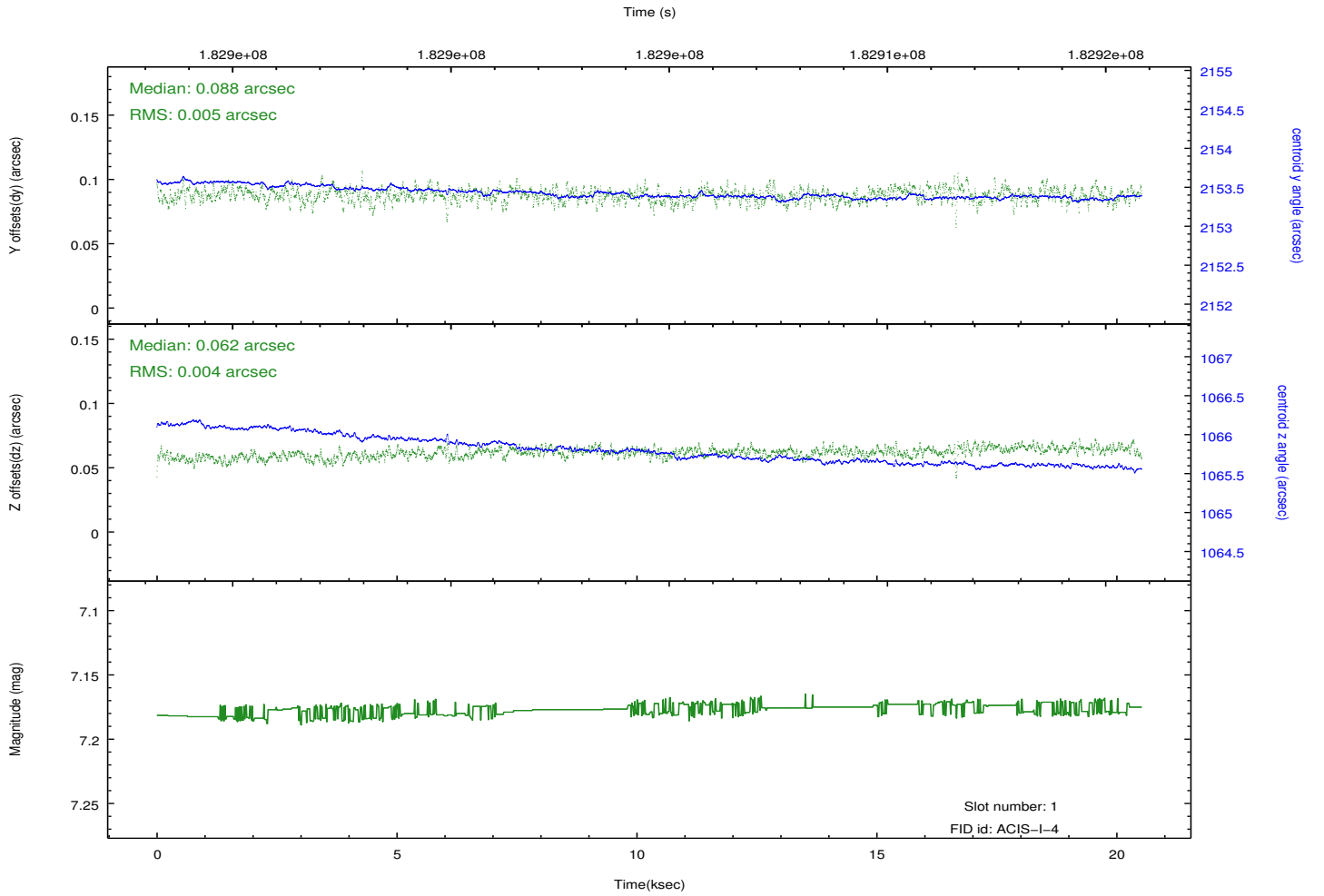
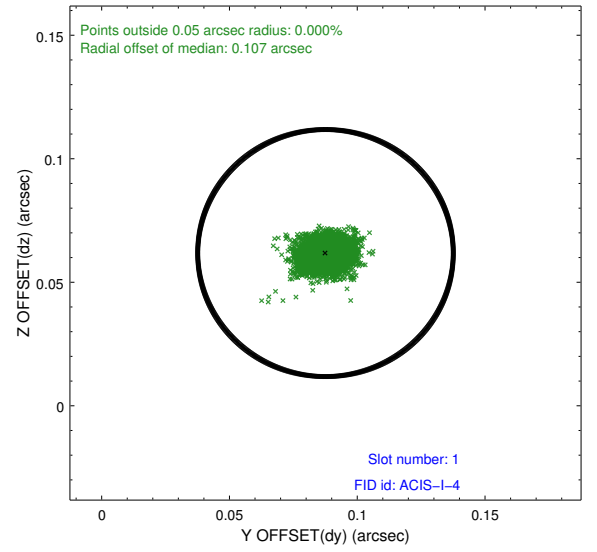
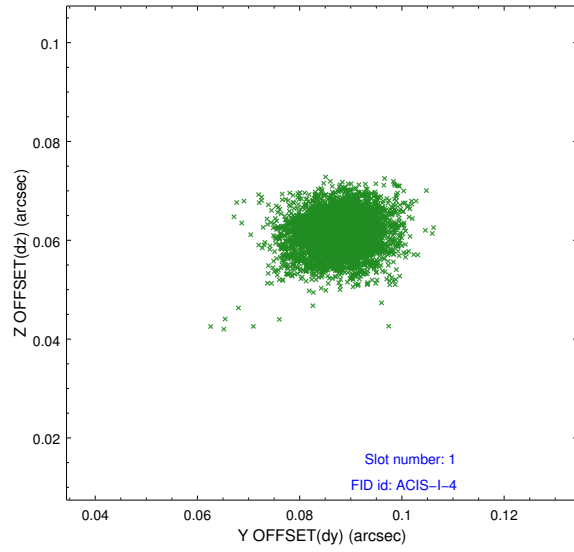


2.5 FID Slots

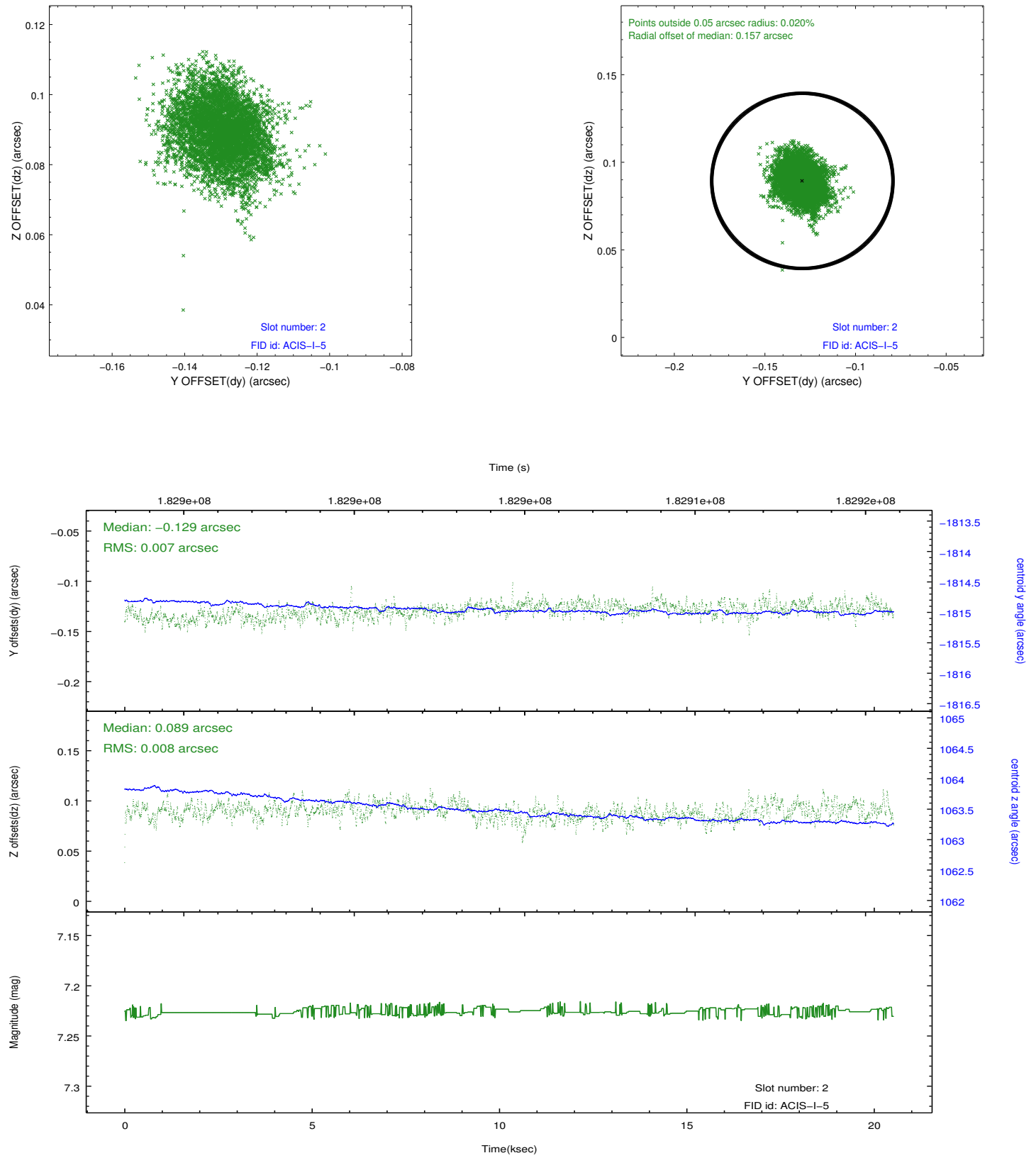
2.5.1 Slot 0



2.5.2 Slot 1



2.5.3 Slot 2



A Summary

A.1 Status

V&V Scientist	Beth Sundheim
V&V Date (YYYY-MM-DD)	2012.11.28
V&V Edition	1
V&V Disposition and Status	OK
V&V Charge Time	20.242

A.2 Comments