

V&V Reference Report

L2 ASCDS Version : 7.6.8

Observation 3512 - L2 Version 001
Chandra X-Ray Center

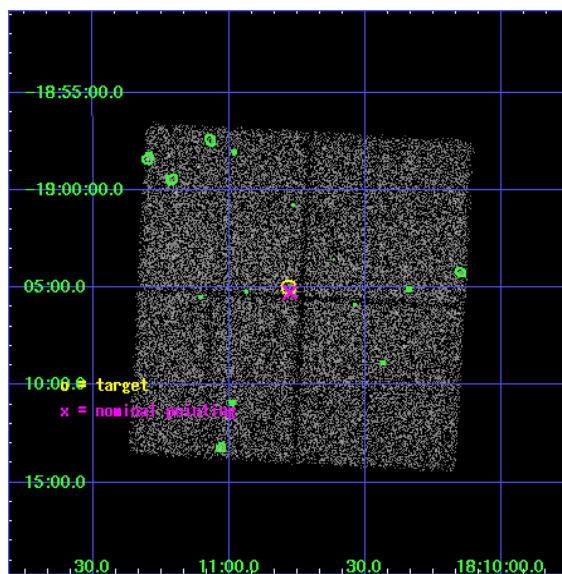
L2 Processing Date : Jun 29 2006

Contents

| | | |
|----------|-------------------------------|-----------|
| 1 | Front | 2 |
| 2 | OBI | 3 |
| 2.1 | OBI | 3 |
| 2.1.1 | Images | 3 |
| 2.1.2 | Bias | 3 |
| 2.1.3 | Parameters | 4 |
| 2.1.4 | Events | 4 |
| 2.2 | Compared Parameters | 5 |
| 2.3 | Aspect | 6 |
| 2.4 | Star Slots | 9 |
| 2.4.1 | Slot 3 | 9 |
| 2.4.2 | Slot 4 | 10 |
| 2.4.3 | Slot 5 | 11 |
| 2.4.4 | Slot 6 | 12 |
| 2.4.5 | Slot 7 | 13 |
| 2.5 | FID Slots | 14 |
| 2.5.1 | Slot 0 | 14 |
| 2.5.2 | Slot 1 | 15 |
| 2.5.3 | Slot 2 | 16 |
| 3 | Point Sources | 17 |
| A | Summary | 18 |
| A.1 | Status | 18 |
| A.2 | Comments | 18 |

1 Front

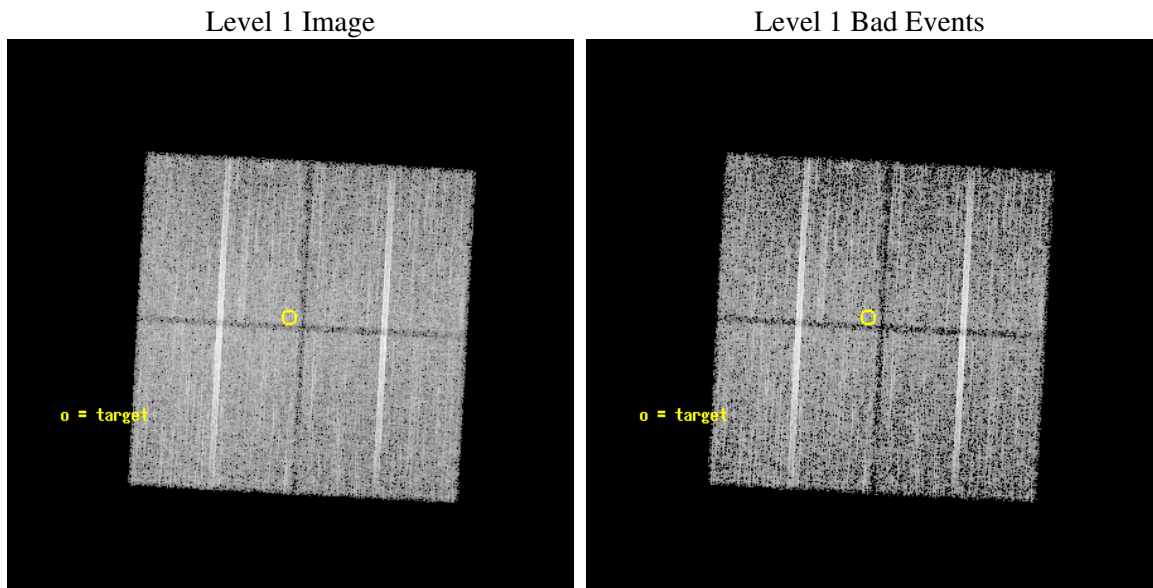
| | |
|----------|------------------------------|
| seq_num | 500300 |
| obs_id | 3512 |
| title | OBSERVATION OF SNR G11.4-0.1 |
| observer | Professor Gordon Garmire |
| object | G11.4-0.1 |
| dtcycle | 0 |
| cycle | P |
| ra_targ | 272.695833 |
| dec_targ | -19.083333 |
| ra_nom | 272.69417206743 |
| dec_nom | -19.087696201811 |
| roll_nom | 273.12052567905 |
| revision | 2 |
| ontime | 20239.858990878 |
| livetime | 19975.410332795 |
| ontime0 | 20242.999961078 |
| ontime1 | 20239.859000862 |
| ontime2 | 20242.999961078 |
| ontime3 | 20239.858990878 |
| l2events | 41420 |



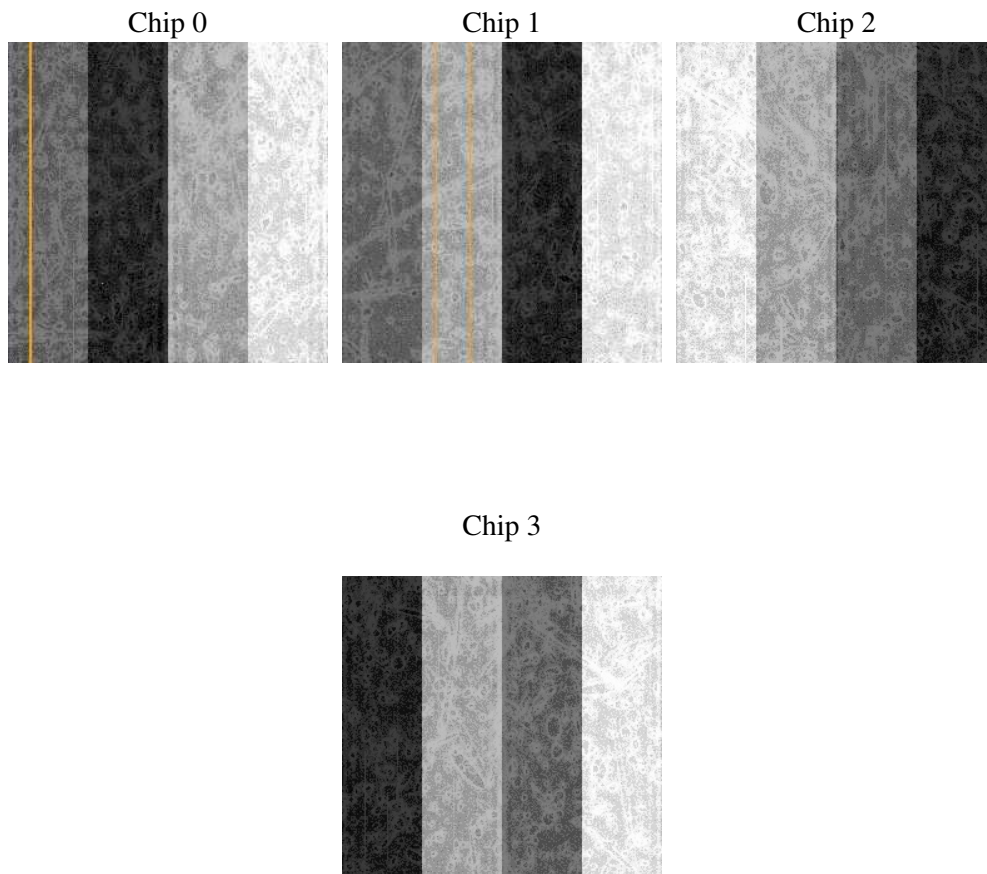
2 OBI

2.1 OBI

2.1.1 Images



2.1.2 Bias



2.1.3 Parameters

| | |
|----------|---------------------|
| obi_num | 0 |
| ascdsver | 7.6.8 |
| caldsver | 3.2.2 |
| date | 2006-06-29T10:15:07 |
| revision | 2 |

| | |
|----------------|-----------------|
| sched_exp_time | 20000.000000 |
| ontime | 20246.895790815 |
| ontime0 | 20253.177781075 |
| ontime1 | 20250.036820859 |
| ontime2 | 20250.036761016 |
| ontime3 | 20246.895790815 |
| l1events | 420119 |

2.1.4 Events

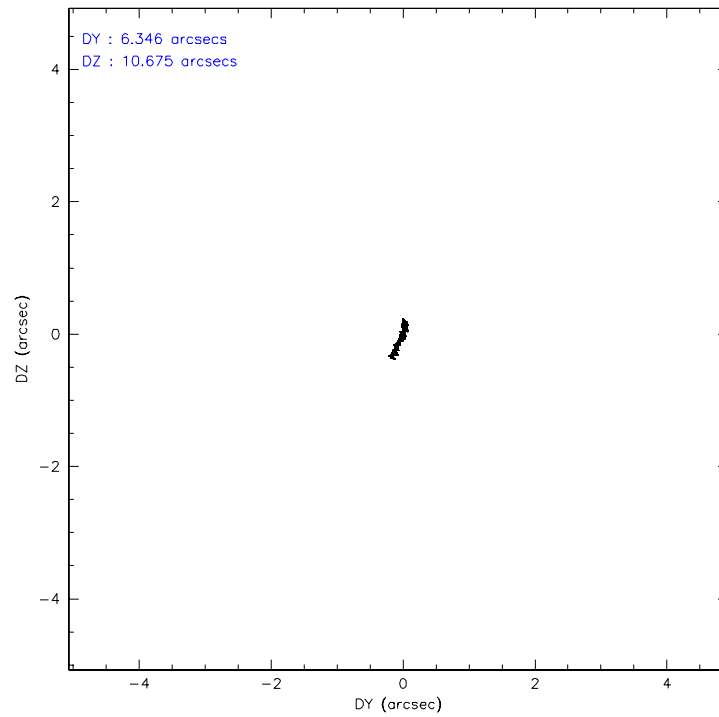
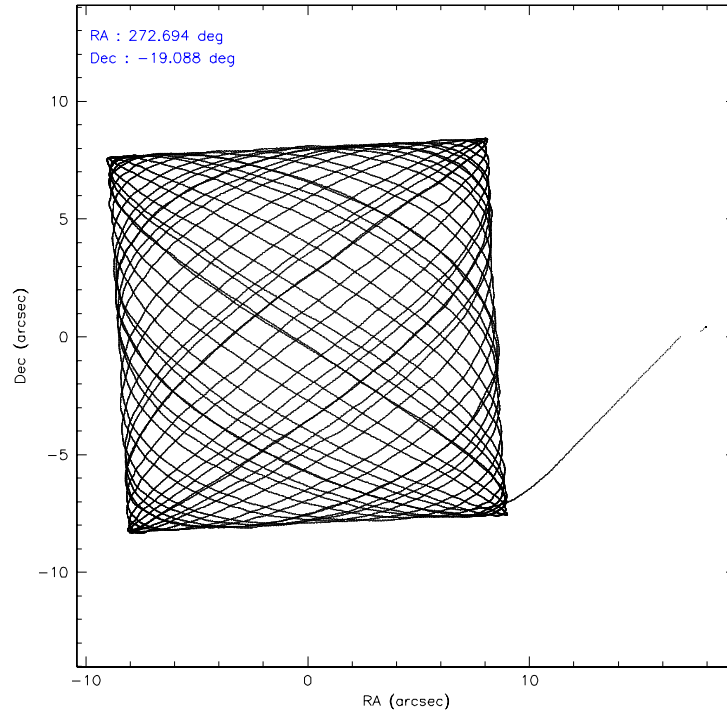
| | ccd 0 | ccd 1 | ccd 2 | ccd 3 |
|-----------------|-------|-------|--------|--------|
| level 1 events | 97461 | 99394 | 117322 | 105942 |
| rejected events | 85241 | 86692 | 104533 | 93929 |
| rejected % | 87% | 87% | 89% | 88% |

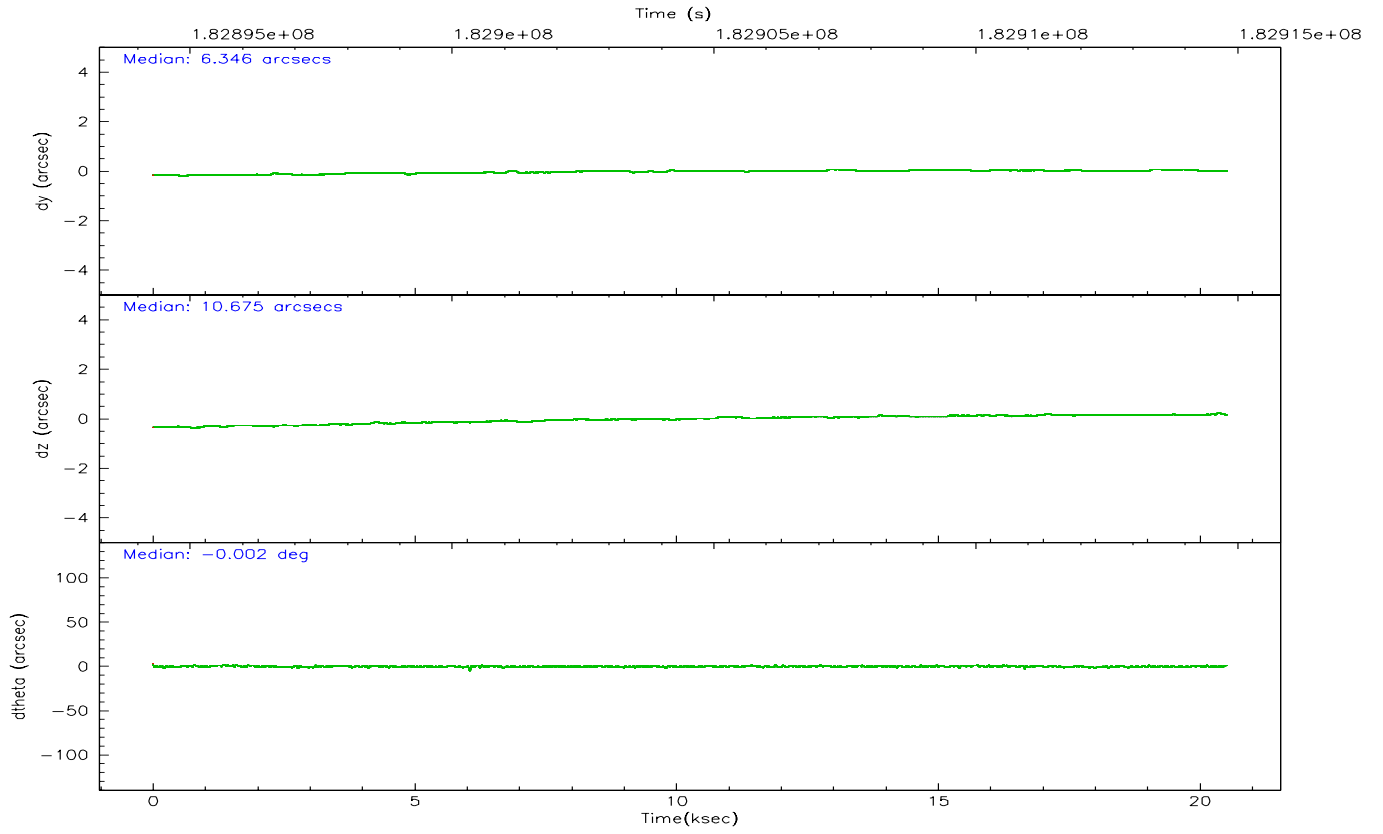
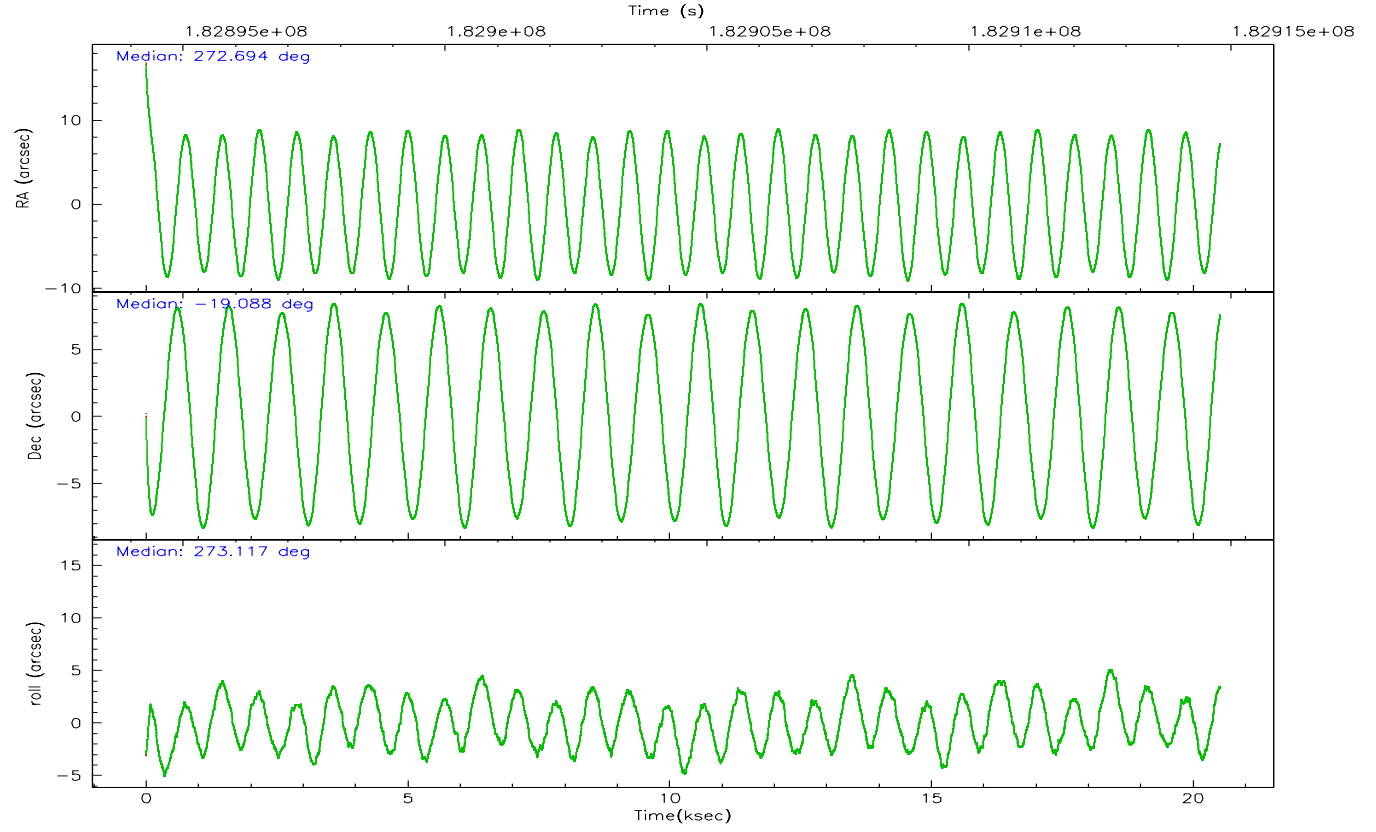
| | ccd 0 | ccd 1 | ccd 2 | ccd 3 |
|----------------|-------|-------|--------|-------|
| grade 0 events | 5263 | 5265 | 5860 | 5394 |
| | 5% | 5% | 4% | 5% |
| grade 1 events | 55 | 49 | 81 | 66 |
| | 0% | 0% | 0% | 0% |
| grade 2 events | 2492 | 2552 | 2588 | 2246 |
| | 2% | 2% | 2% | 2% |
| grade 3 events | 1335 | 1373 | 1197 | 1304 |
| | 1% | 1% | 1% | 1% |
| grade 4 events | 1223 | 1336 | 1302 | 1239 |
| | 1% | 1% | 1% | 1% |
| grade 5 events | 3064 | 3298 | 2914 | 3492 |
| | 3% | 3% | 2% | 3% |
| grade 6 events | 1909 | 2182 | 1845 | 1839 |
| | 1% | 2% | 1% | 1% |
| grade 7 events | 82120 | 83339 | 101535 | 90362 |
| | 84% | 83% | 86% | 85% |

2.2 Compared Parameters

| Parameter | Planned | Actual | Parameter | Planned | Actual |
|-----------------------------------|---------------------|-----------------------|---------------------------------|-----------|---------|
| Instrument | ACIS | ACIS | Obspar format version number | 6 | 6 |
| Detector | ACIS-0123 | ACIS-0123 | Obspar file type | PREDICTED | ACTUAL |
| Grating | NONE | NONE | Obspar update status | NONE | UPDATED |
| Data mode | VFAINT | VFAINT | On-chip summing requested | N | N |
| Observation mode | POINTING | POINTING | Subarray requested | NONE | NONE |
| Pointing RA | 272.678235 | 272.6941720674253 | Alternating exposures requested | N | N |
| Pointing Dec | -19.064822 | -19.08769620181094 | Primary exposure time | 0.000000 | 3.1 |
| Pointing Roll | 272.906642 | 273.1205256790452 | | | |
| SIM focus pos (mm) | -0.782348 | -0.7809083437167272 | | | |
| SIM defocus (mm) | 0 | 0.001439871863259334 | | | |
| SIM translation stage pos (mm) | -233.592463 | -233.5874344608287 | | | |
| SIM translation stage offset (mm) | 0 | -0.005018542100998502 | | | |
| Observation start time | 182894807.184000 | 182893680.68283 | | | |
| Observation start date | 2003-10-18T20:05:43 | 2003-10-18T19:48:00 | | | |
| Observation end time | 182914807.184000 | 182915603.89627 | | | |
| Observation end date | 2003-10-19T01:39:03 | 2003-10-19T01:53:23 | | | |
| Read mode | TIMED | TIMED | | | |

2.3 Aspect



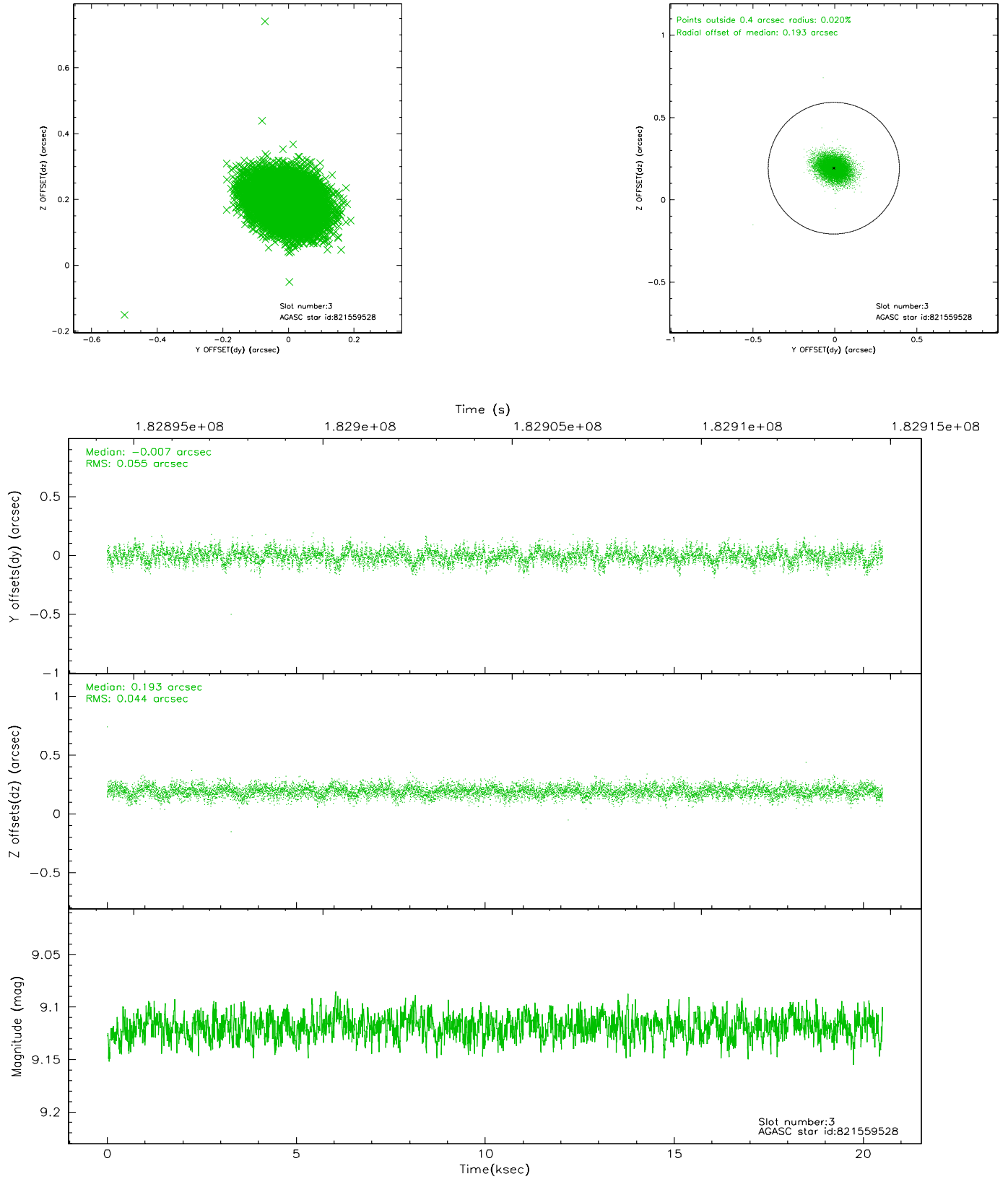


Slot Statistics

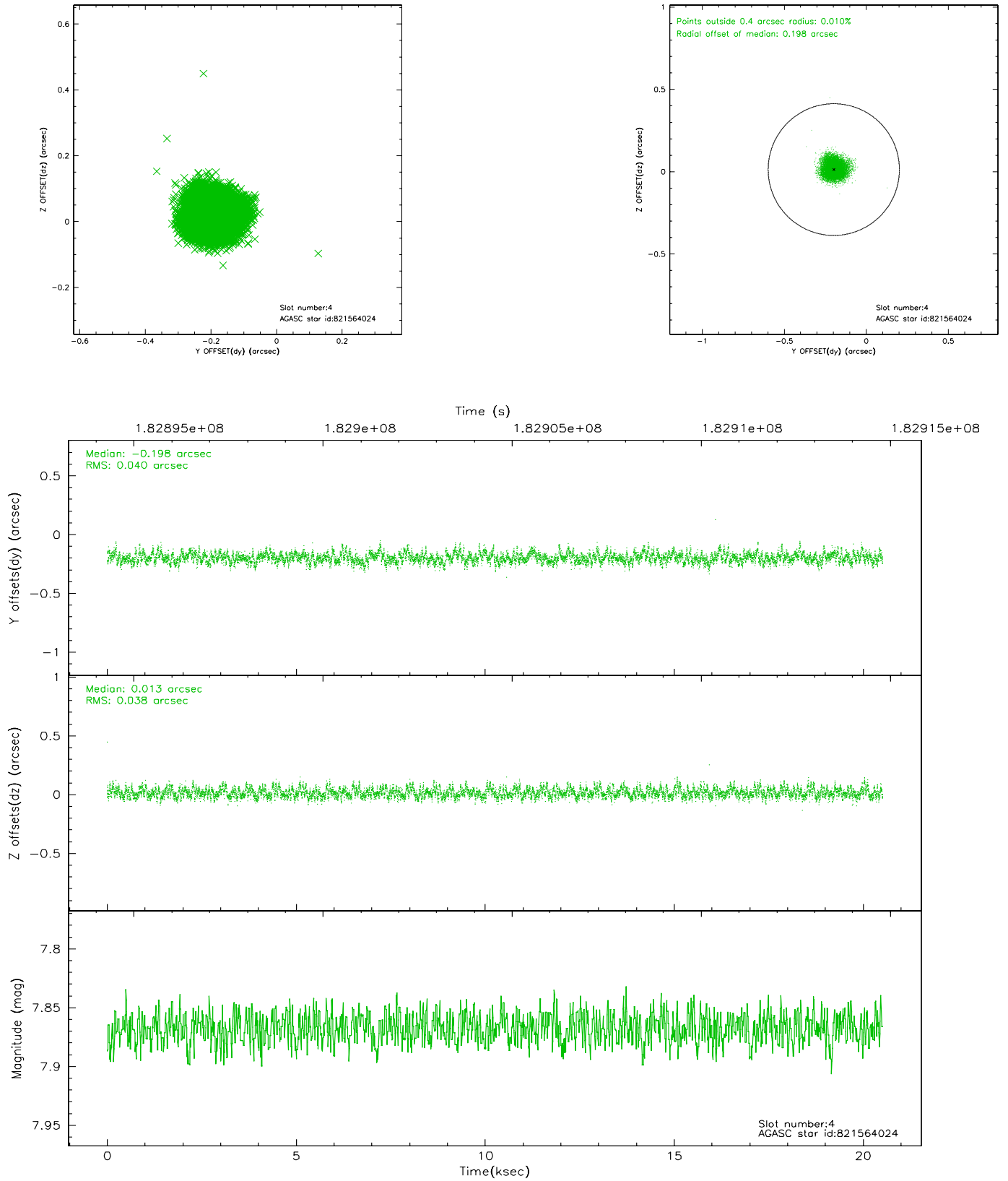
| slot | status | id | mag | n_pts | med_dy | med_dz | dr1 | dr2 | ra | dec | mean_y | mean_z |
|------|--------|-----------|------|-------|--------|--------|-------|-------|------------|------------|----------|----------|
| 0 | FID | ACIS-I-2 | 7.14 | 5003 | -0.048 | -0.059 | 0.012 | 0.020 | 0.000000 | 0.000000 | -760.84 | -840.56 |
| 1 | FID | ACIS-I-4 | 7.18 | 5005 | 0.045 | 0.050 | 0.006 | 0.010 | 0.000000 | 0.000000 | 2153.23 | 1065.64 |
| 2 | FID | ACIS-I-5 | 7.23 | 5005 | -0.098 | 0.078 | 0.011 | 0.018 | 0.000000 | 0.000000 | -1814.49 | 1063.71 |
| 3 | GUIDE | 821559528 | 9.12 | 10008 | -0.007 | 0.193 | 0.073 | 0.122 | 272.980625 | -18.673858 | -1352.31 | 1101.64 |
| 4 | GUIDE | 821564024 | 7.87 | 10006 | -0.198 | 0.013 | 0.059 | 0.094 | 272.759965 | -18.547608 | -1845.38 | 373.06 |
| 5 | GUIDE | 821575560 | 8.11 | 10008 | -0.210 | -0.020 | 0.054 | 0.085 | 272.682521 | -18.484686 | -2085.16 | 120.66 |
| 6 | GUIDE | 822090992 | 8.68 | 10008 | 0.175 | -0.061 | 0.059 | 0.097 | 272.402721 | -19.357501 | 1005.87 | -987.82 |
| 7 | GUIDE | 822101176 | 9.07 | 9999 | 0.246 | -0.125 | 0.106 | 0.168 | 272.316309 | -19.723295 | 2307.26 | -1345.12 |

2.4 Star Slots

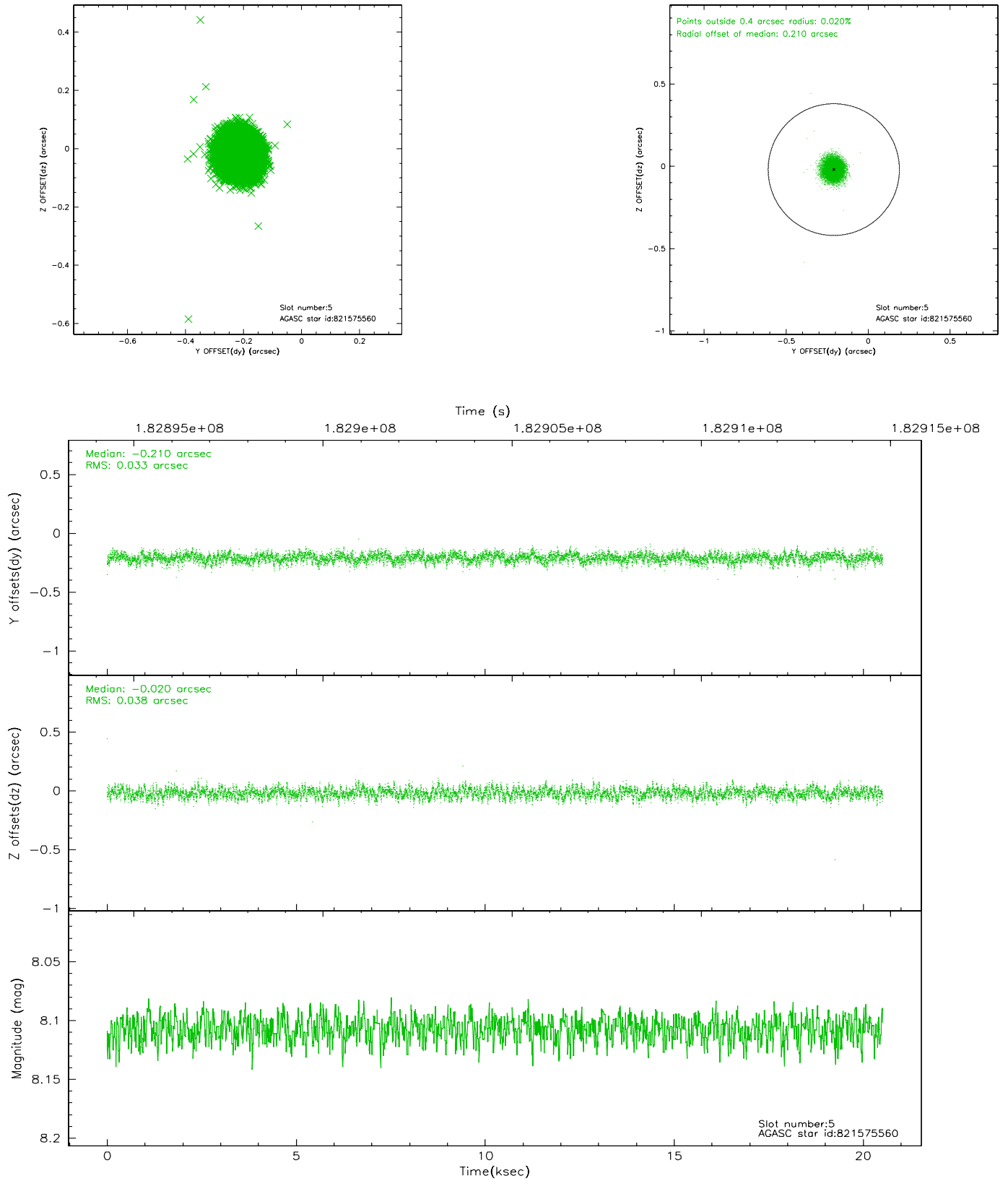
2.4.1 Slot 3



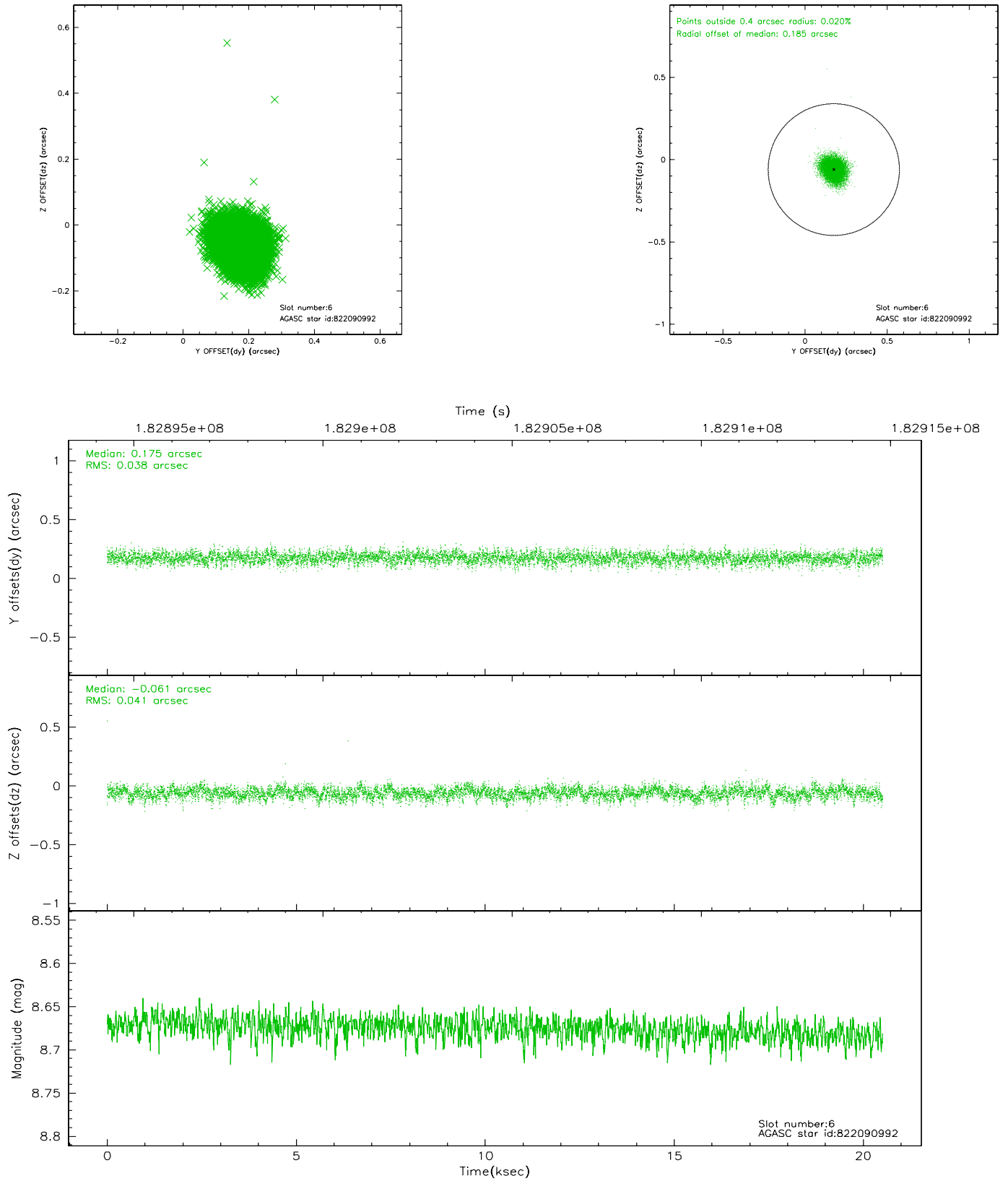
2.4.2 Slot 4



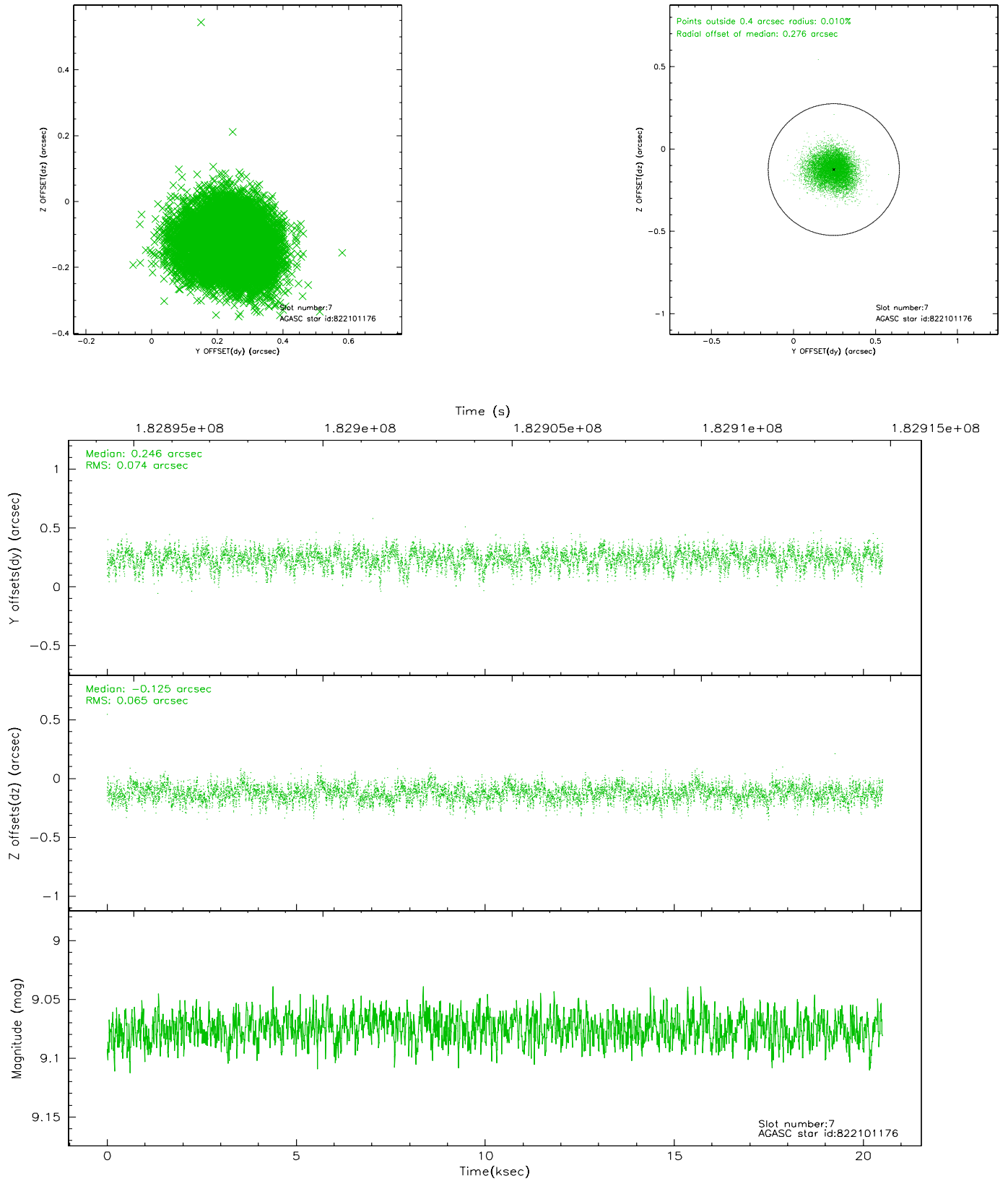
2.4.3 Slot 5



2.4.4 Slot 6

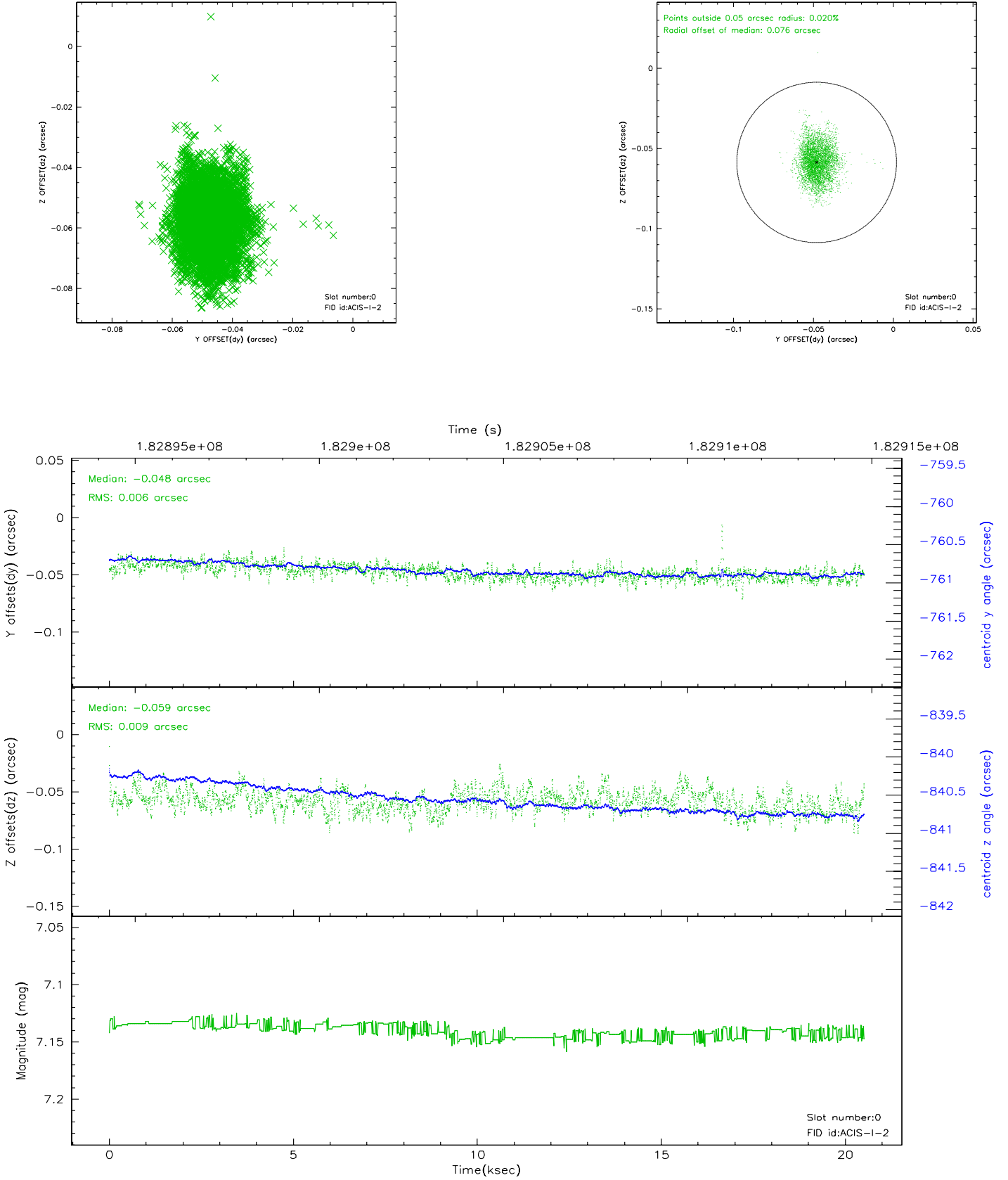


2.4.5 Slot 7

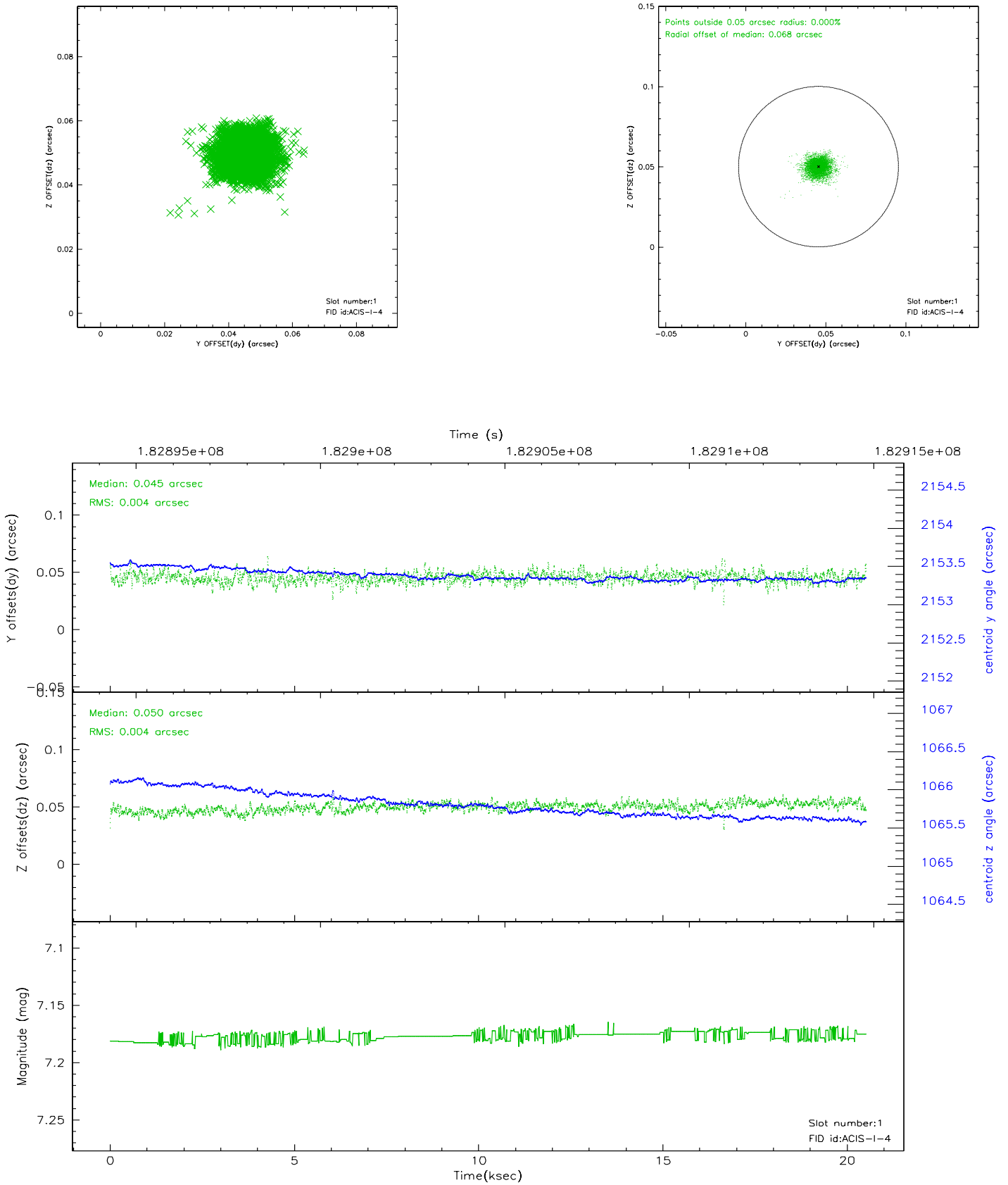


2.5 FID Slots

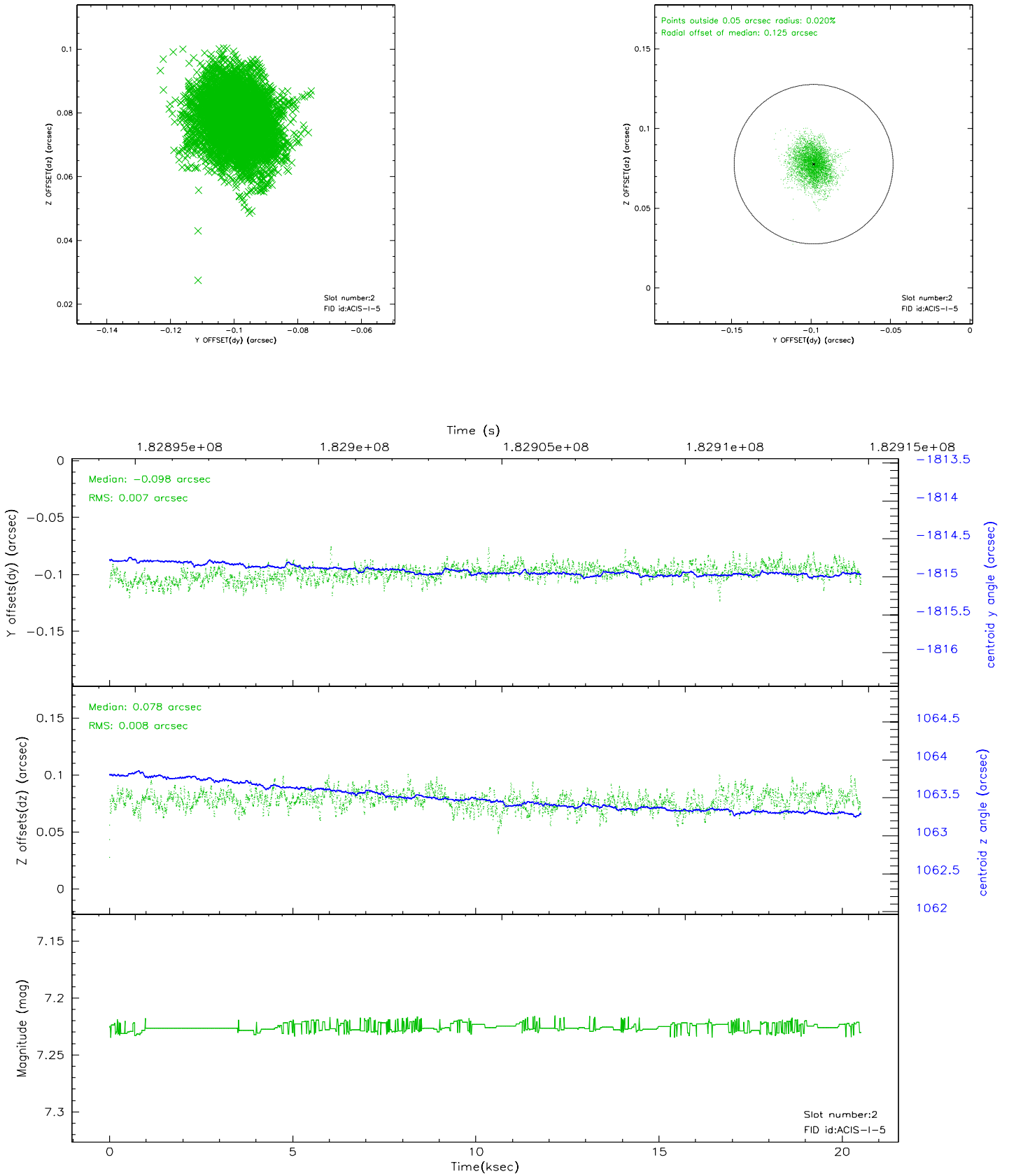
2.5.1 Slot 0



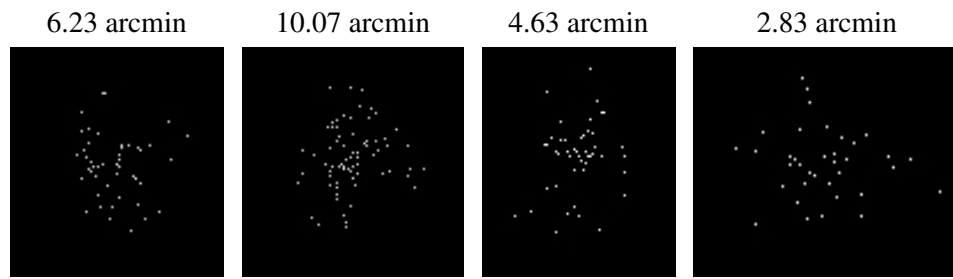
2.5.2 Slot 1



2.5.3 Slot 2



3 Point Sources



A Summary

A.1 Status

| | |
|----------------------------|---------------|
| V&V Scientist | Beth Sundheim |
| V&V Date (YYYY-MM-DD) | 2006.06.29 |
| V&V Edition | 1 |
| V&V Disposition and Status | OK |
| V&V Charge Time | 20.242 |

A.2 Comments