

# V&V Reference Report

## L2 ASCDS Version : 8.4.5

Observation 3462 - L2 Version 3  
Chandra X-Ray Center

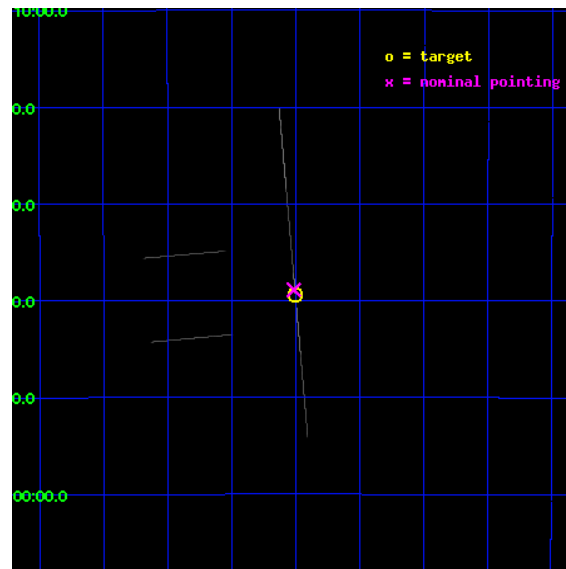
L2 Processing Date : Oct 4 2012

## Contents

<b>1</b>	<b>Front</b>	<b>2</b>
<b>2</b>	<b>OBI</b>	<b>3</b>
2.1	OBI . . . . .	3
2.1.1	Images . . . . .	3
2.1.2	Bias . . . . .	3
2.1.3	Parameters . . . . .	4
2.1.4	Events . . . . .	4
2.2	Compared Parameters . . . . .	5
2.3	Aspect . . . . .	6
2.4	Star Slots . . . . .	9
2.4.1	Slot 3 . . . . .	9
2.4.2	Slot 4 . . . . .	10
2.4.3	Slot 5 . . . . .	11
2.4.4	Slot 6 . . . . .	12
2.4.5	Slot 7 . . . . .	13
2.5	FID Slots . . . . .	14
2.5.1	Slot 0 . . . . .	14
2.5.2	Slot 1 . . . . .	15
2.5.3	Slot 2 . . . . .	16
<b>A</b>	<b>Summary</b>	<b>17</b>
A.1	Status . . . . .	17
A.2	Comments . . . . .	17

# 1 Front

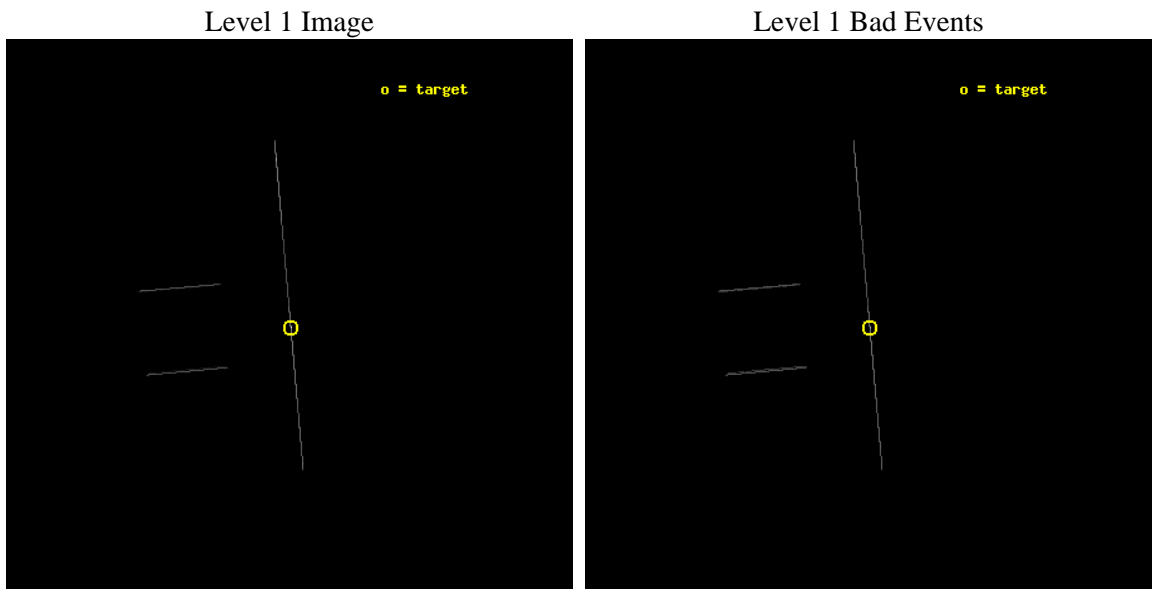
seq_num	400237	Sequence number
obs_id	3462	Observation id
title	A FAINT NEUTRON STAR SOFT X-RAY TRANSIENT RETURNING TO QUIESCENCE	&#160
observer	dr Peter Jonker	Principal investigator
object	RX J170930.2-263927	Source name
ra_targ	257.375833	Observer's specified target RA [deg]
dec_targ	-26.6575	Observer's specified target Dec [deg]
ra_nom	257.3786984687	Nominal RA [deg]
dec_nom	-26.6481508148	Nominal Dec [deg]
roll_nom	84.940963890918	Nominal Roll [deg]
revision	3	Processing version of data
ontime	14206.792031586	Sum of GTIs [s]
livetime	14151.296750213	Livetime [s]
ontime2	14208.25	Sum of GTIs [s]
ontime3	14208.25	Sum of GTIs [s]
ontime5	14208.25	Sum of GTIs [s]
ontime6	14208.25	Sum of GTIs [s]
ontime7	14206.792031586	Sum of GTIs [s]
ontime8	14208.25	Sum of GTIs [s]
l2events	322055	Number of level 2 events



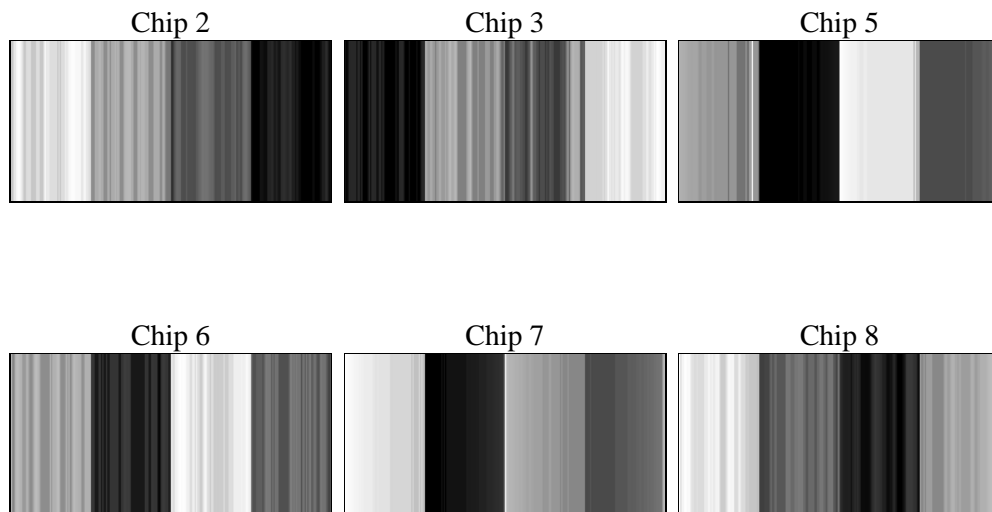
## 2 OBI

### 2.1 OBI

#### 2.1.1 Images



#### 2.1.2 Bias



### 2.1.3 Parameters

obi_num	0	Obi number	sched_exp_time	13700.000000	[s] Scheduled observation exposure time
ascdsver	8.4.5	Processing system revision	ontime	14206.792031586	Sum of GTIs [s]
caldsver	4.5.2	&#160	ontime2	14208.25	Sum of GTIs [s]
date	2012-10-04T11:28:37	Date and time of file creation	ontime3	14208.25	Sum of GTIs [s]
revision	3	Processing version of data	ontime5	14208.25	Sum of GTIs [s]
			ontime6	14208.25	Sum of GTIs [s]
			ontime7	14206.792031586	Sum of GTIs [s]
			ontime8	14208.25	Sum of GTIs [s]
			l1events	420579	Number of level 1 events

### 2.1.4 Events

	ccd 2	ccd 3	ccd 5	ccd 6	ccd 7	ccd 8
level 1 events	19529	21345	87354	22031	230100	40220
rejected events	3756	4347	11927	4394	18234	6753
rejected %	19%	20%	13%	19%	7%	16%

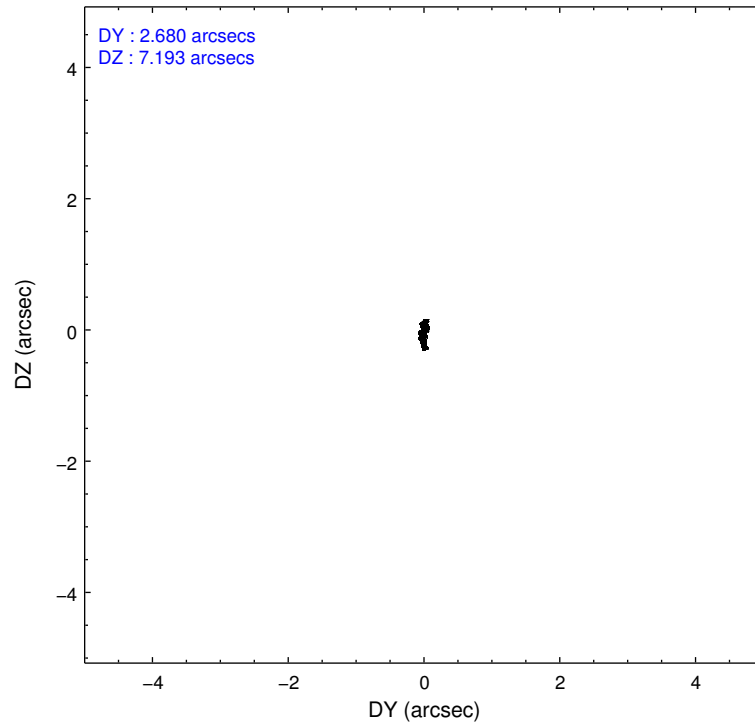
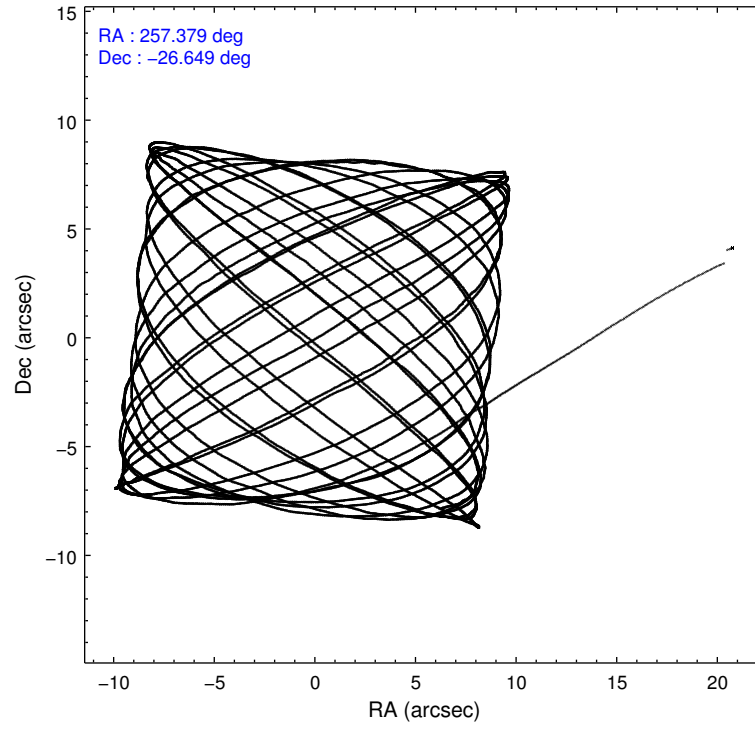
	ccd 2	ccd 3	ccd 5	ccd 6	ccd 7	ccd 8
grade 0 events	2267	2355	15999	2421	49694	7095
	11%	11%	18%	10%	21%	17%
grade 1 events	64	69	137	63	872	153
	0%	0%	0%	0%	0%	0%
grade 2 events	6649	6894	22045	7411	56814	11105
	34%	32%	25%	33%	24%	27%
grade 3 events	2025	2639	2149	2264	23036	3910
	10%	12%	2%	10%	10%	9%
grade 4 events	2053	2290	2025	2254	22133	3847
	10%	10%	2%	10%	9%	9%
grade 5 events	3132	3552	8792	3716	13827	5301
	16%	16%	10%	16%	6%	13%
grade 6 events	3339	3546	36207	3902	63724	8809
	17%	16%	41%	17%	27%	21%
grade 7 events	0	0	0	0	0	0
	0%	0%	0%	0%	0%	0%

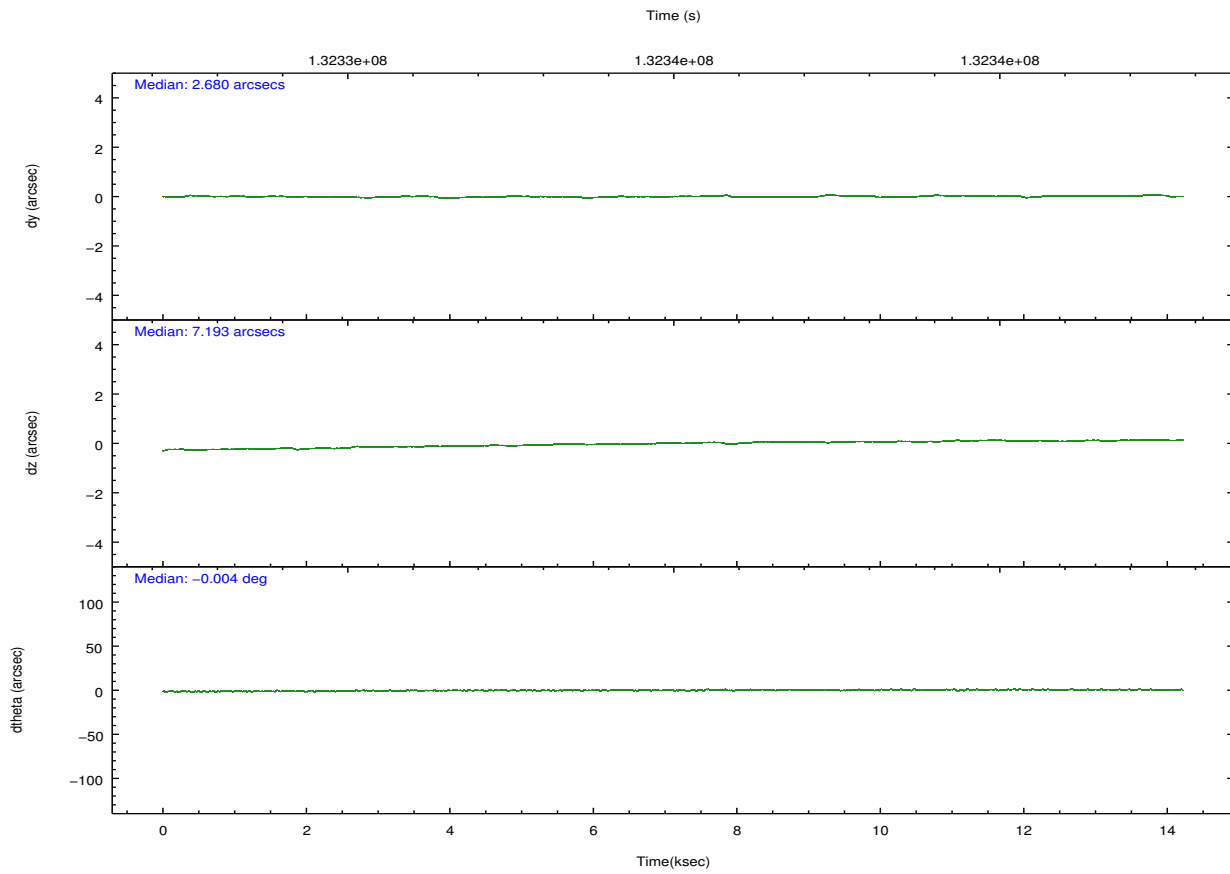
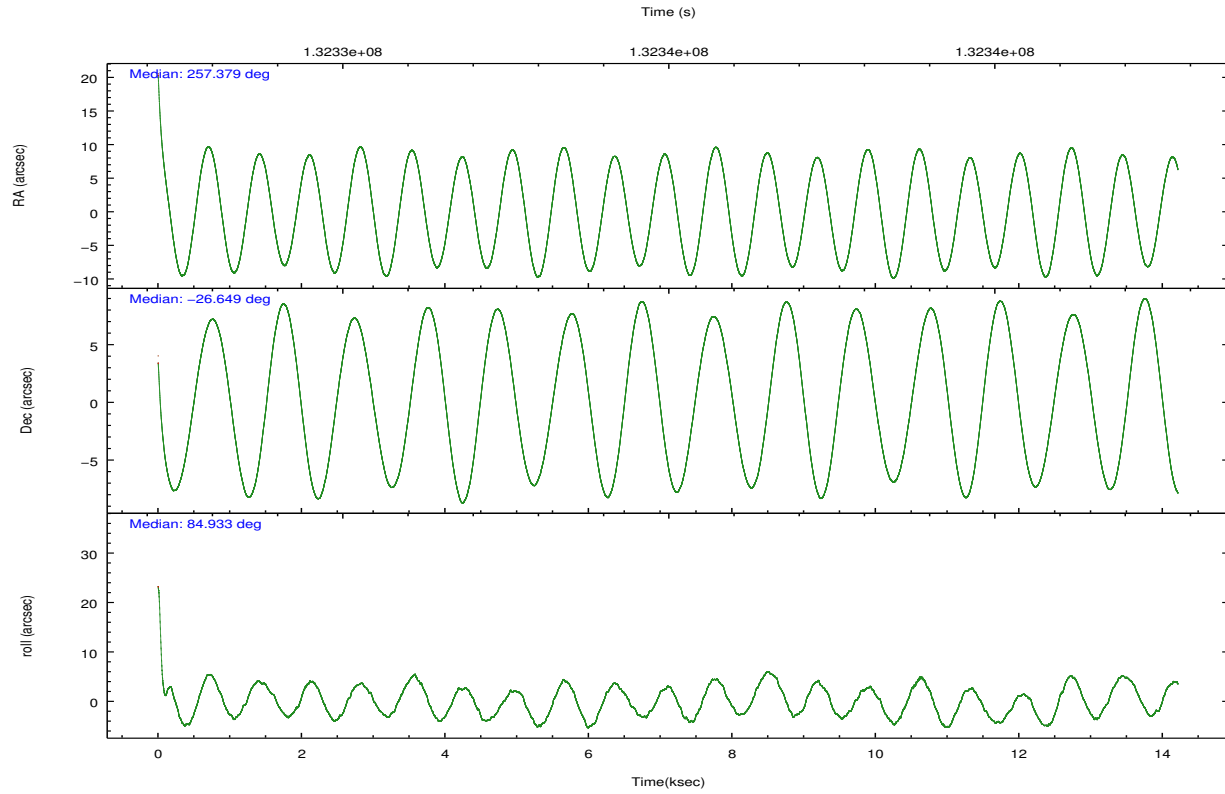


## 2.2 Compared Parameters

Parameter	Planned	Actual	Parameter	Planned	Actual
Instrument	ACIS	ACIS	Obspar format version number	7	7
Detector	ACIS-235678	ACIS-235678	Obspar file type	PREDICTED	ACTUAL
Grating	NONE	NONE	Obspar update status	NONE	UPDATED
Data mode	CC33_FAINT	CC33_FAINT	Number of optional ACIS chips dropped	0	0
Observation mode	POINTING	POINTING	On-chip summing requested	N	N
[deg] Pointing RA	257.391882	257.3786984686968	Subarray requested	NONE	NONE
[deg] Pointing Dec	-26.672695	-26.64815081480048	Alternating exposures requested	N	N
[deg] Pointing Roll	84.790239	84.94096389091803	[s] Primary exposure time	0.000000	0
[mm] SIM focus pos	-0.684267	-0.6828225247311905			
[mm] SIM defocus	0	0.001444936568705701			
[mm] SIM translation stage pos	-190.132523	-190.1400660498719			
[mm] SIM translation stage offset	0	0.00754346686406393			
[s] Observation start time (MET)	132328398.184000	132327271.57021			
Observation start date	2002-03-12T13:52:14	2002-03-12T13:34:31			
[s] Observation end time (MET)	132342098.184000	132342388.27082			
Observation end date	2002-03-12T17:40:34	2002-03-12T17:46:28			
Read mode	CONTINUOUS	CONTINUOUS			

## 2.3 Aspect



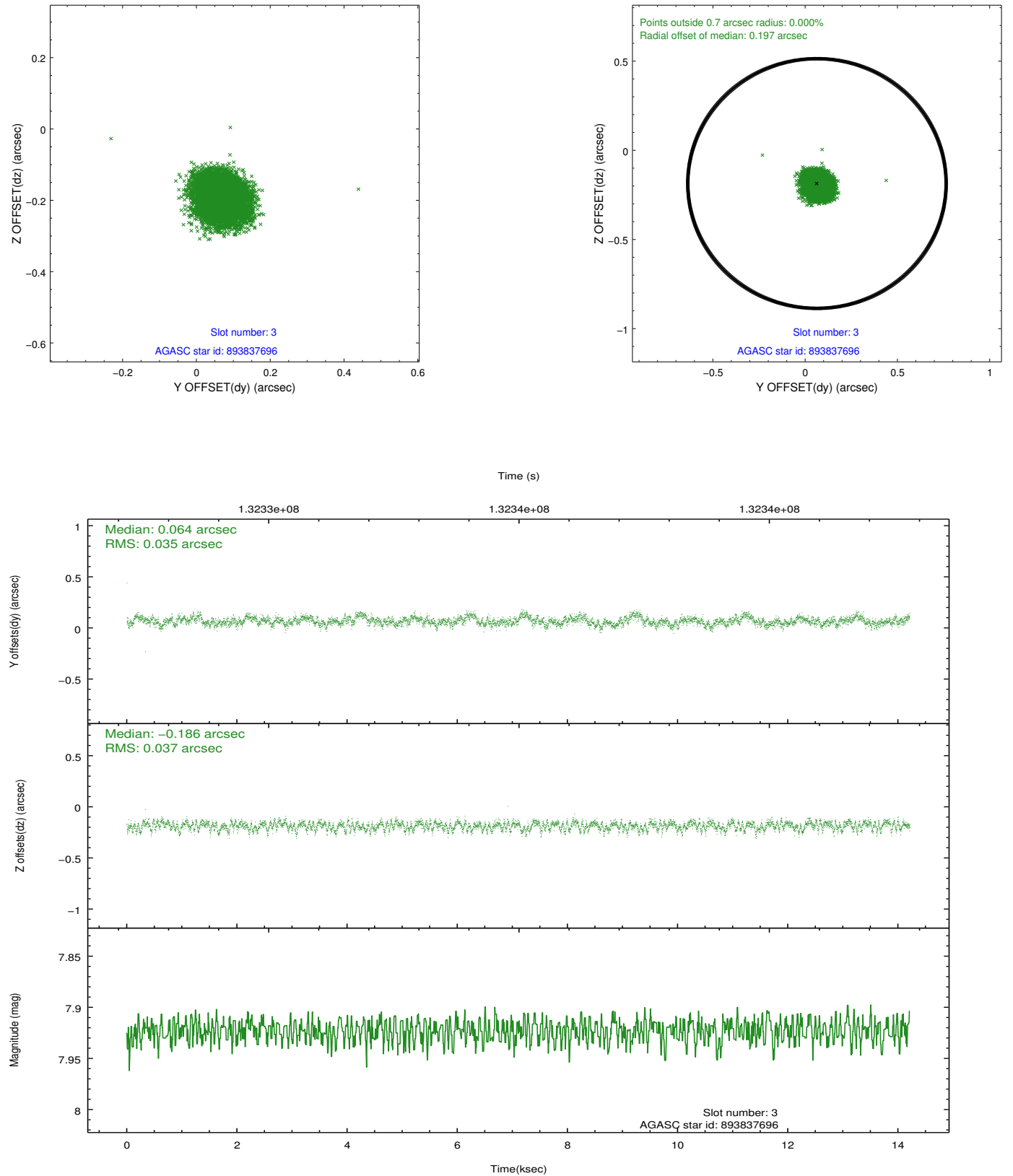


### Slot Statistics

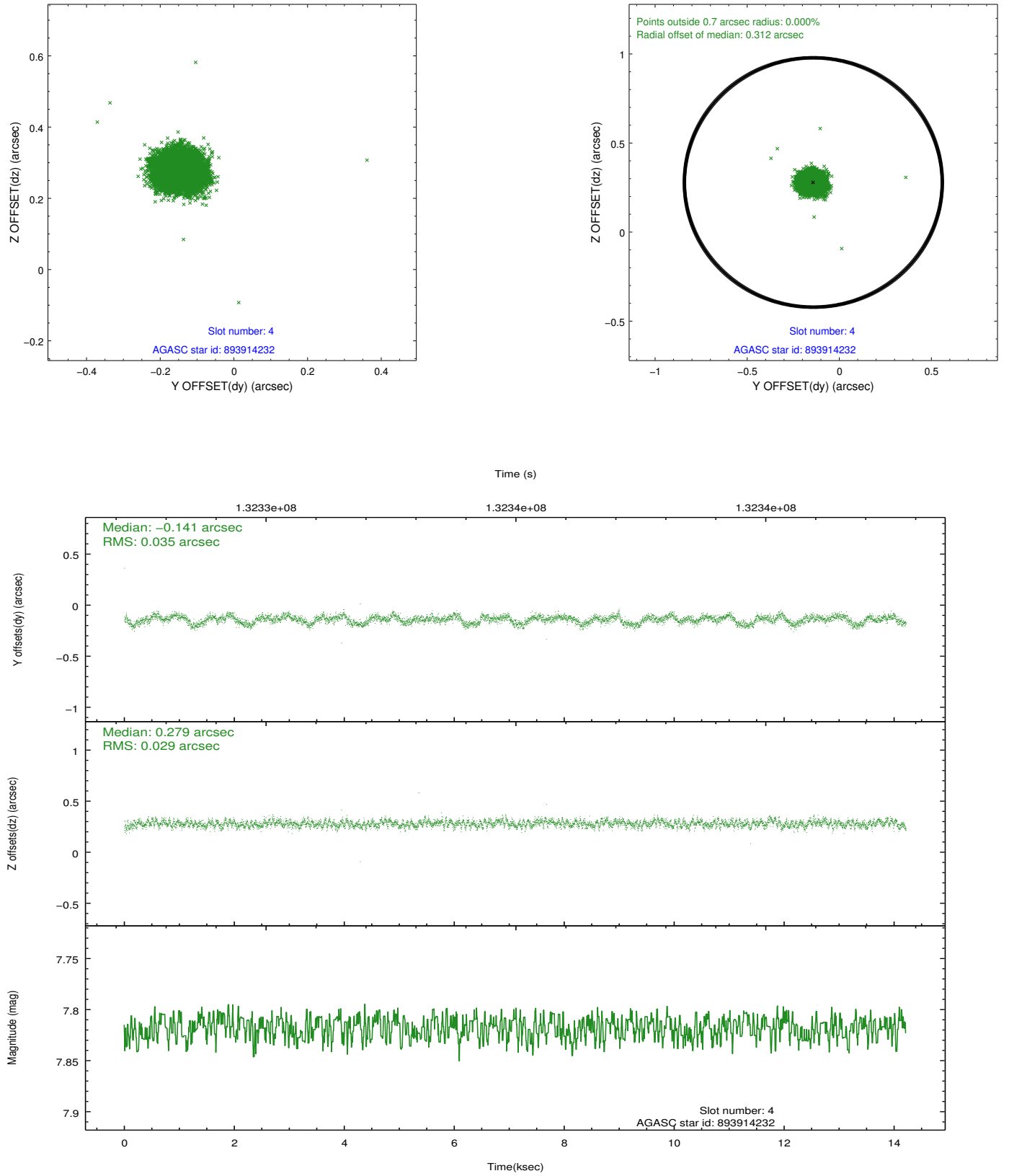
slot	status	id	mag	n_pts	med_dy	med_dz	dr1	dr2	ra	dec	mean_y	mean_z
0	FID	ACIS-S-2	7.11	3468	-0.014	0.007	0.007	0.012	0.000000	0.000000	-755.33	-1728.33
1	FID	ACIS-S-4	7.20	3465	-0.044	0.005	0.005	0.009	0.000000	0.000000	2157.77	179.82
2	FID	ACIS-S-5	7.24	3466	0.027	-0.003	0.007	0.012	0.000000	0.000000	-1807.71	173.85
3	GUIDE	893837696	7.92	6930	0.064	-0.186	0.054	0.087	257.277958	-26.423720	860.75	446.94
4	GUIDE	893914232	7.82	6935	-0.141	0.279	0.049	0.077	257.948003	-26.439334	997.40	-1708.96
5	GUIDE	893913752	8.69	6931	0.180	0.084	0.064	0.104	257.717246	-26.451689	888.34	-972.40
6	GUIDE	893837592	9.30	6933	-0.082	-0.192	0.083	0.131	256.924631	-26.316123	1140.22	1617.58
7	GUIDE	893835576	8.92	6931	-0.022	0.019	0.072	0.119	257.152526	-26.836742	-656.97	712.06

## 2.4 Star Slots

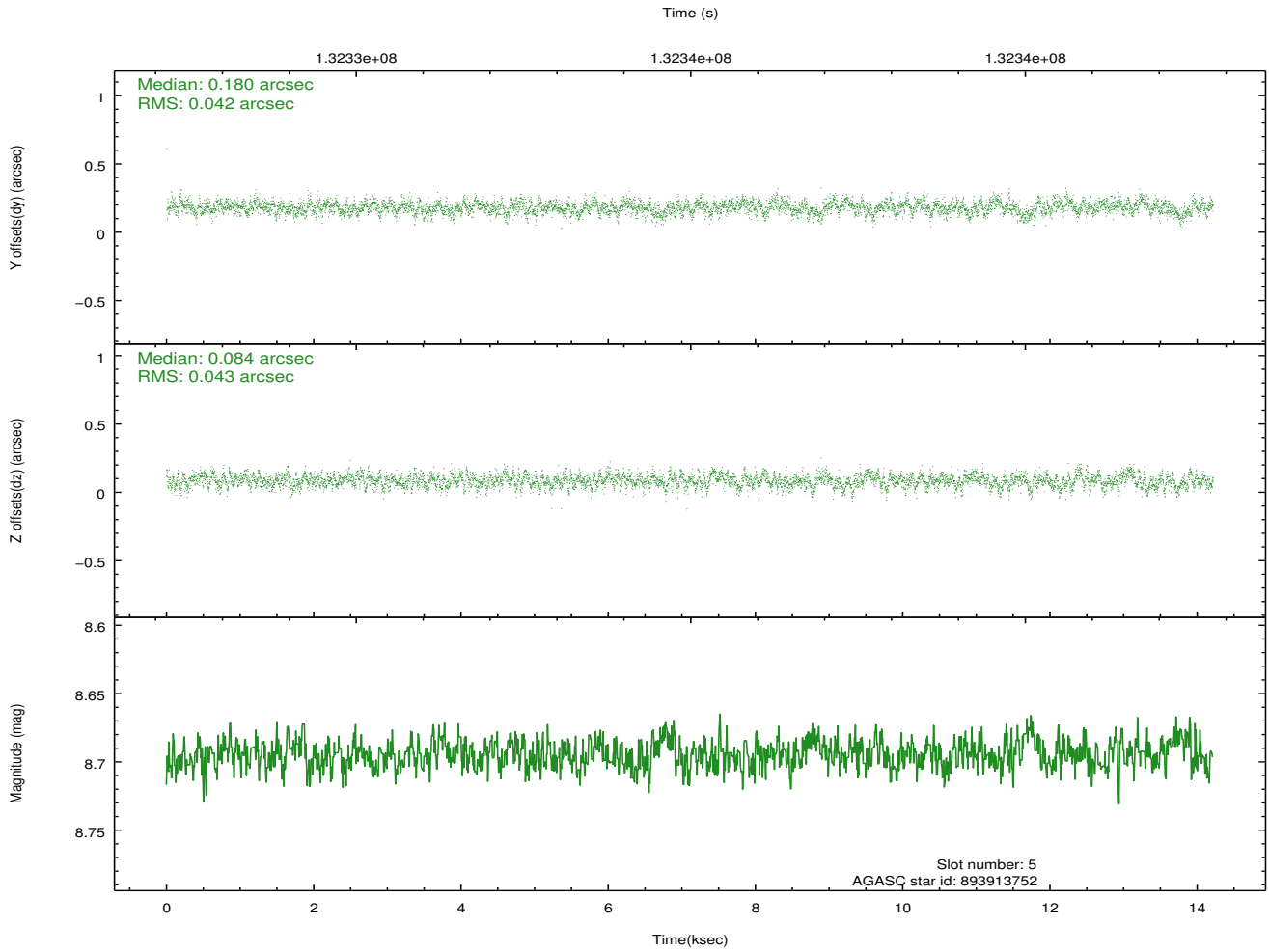
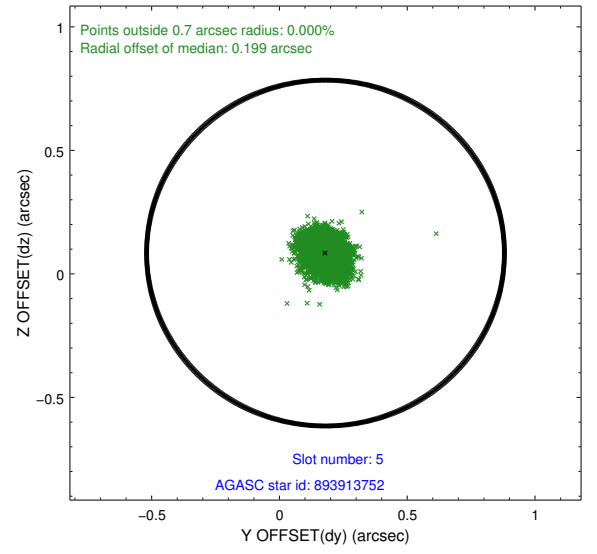
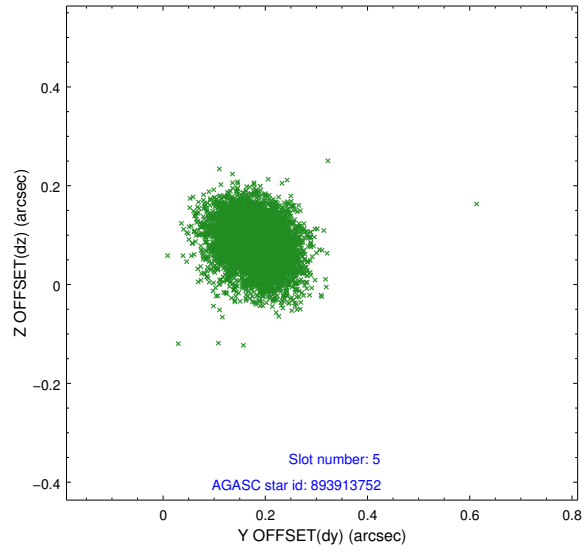
### 2.4.1 Slot 3



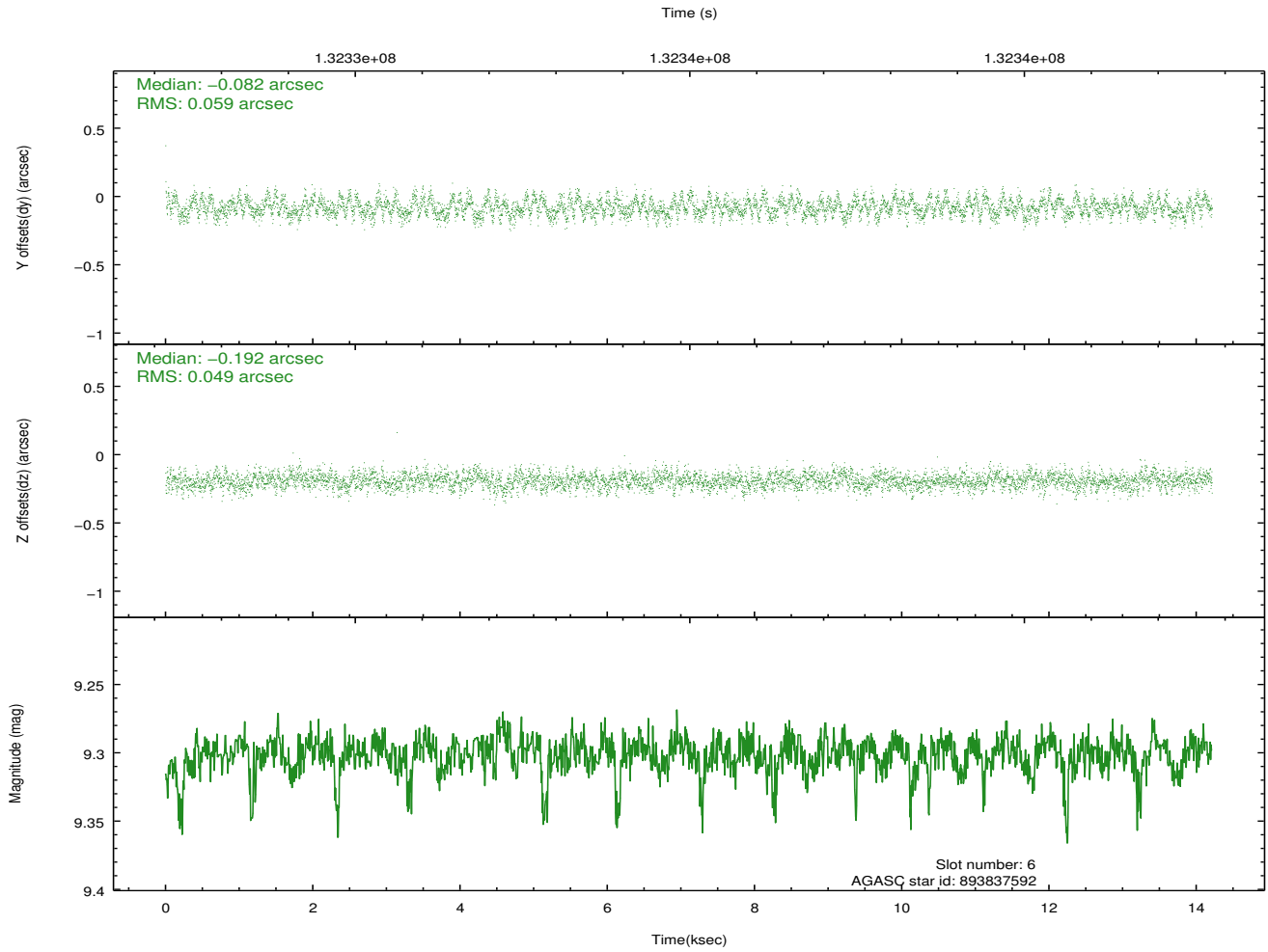
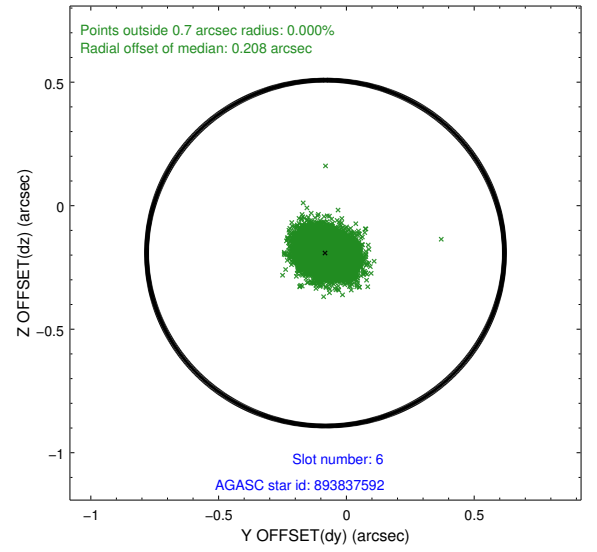
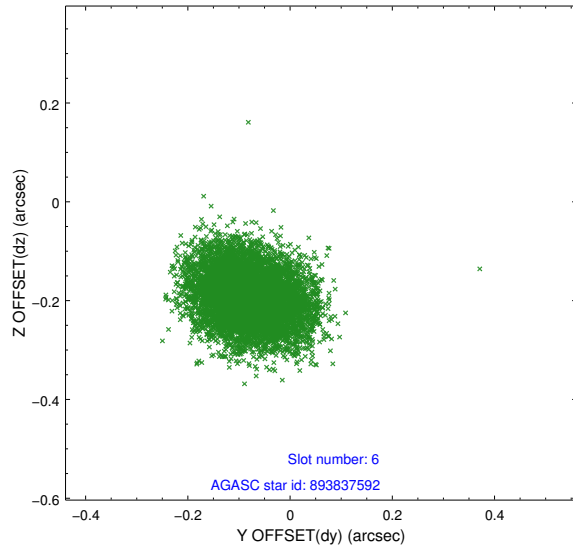
## 2.4.2 Slot 4



### 2.4.3 Slot 5

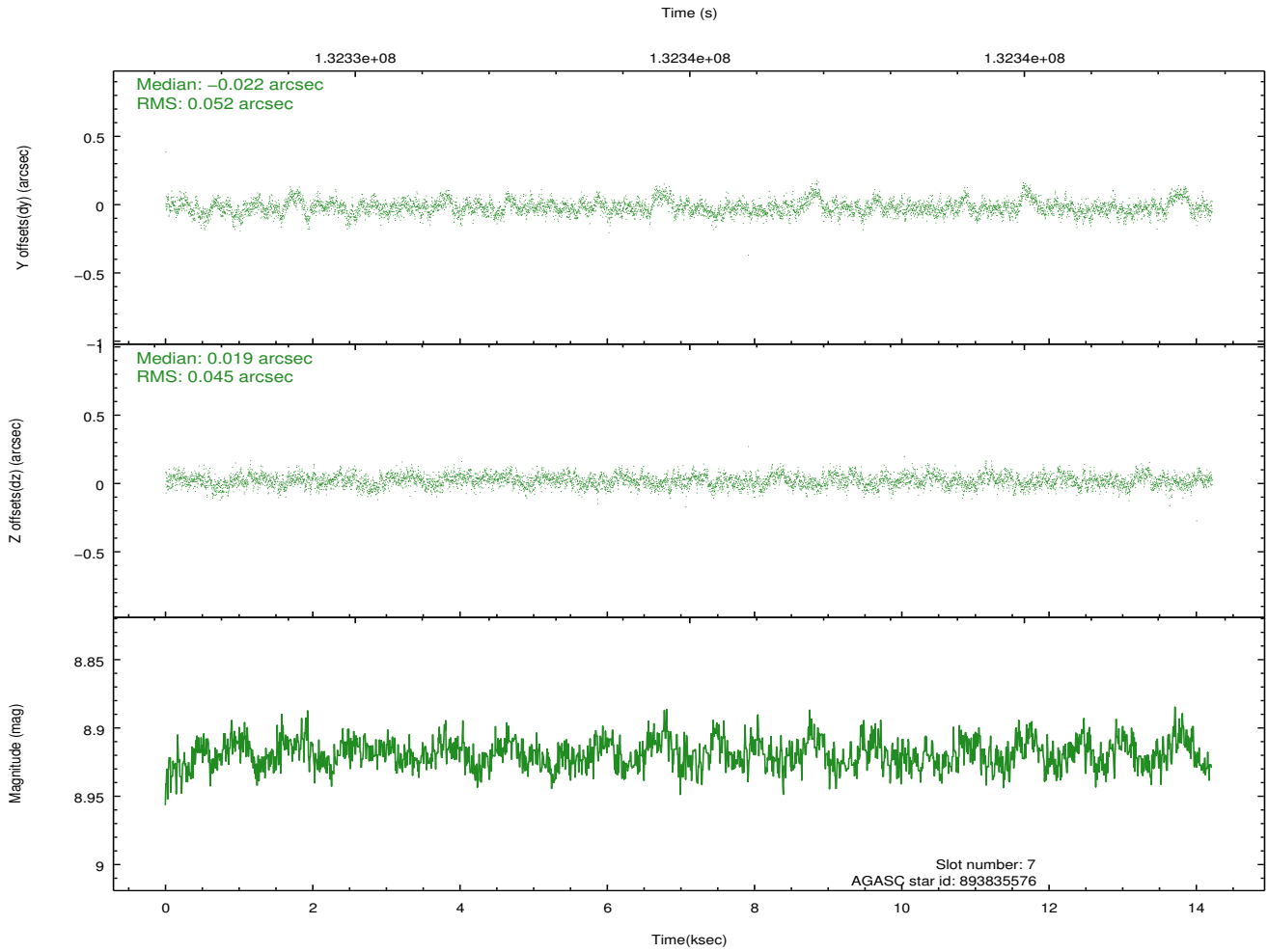
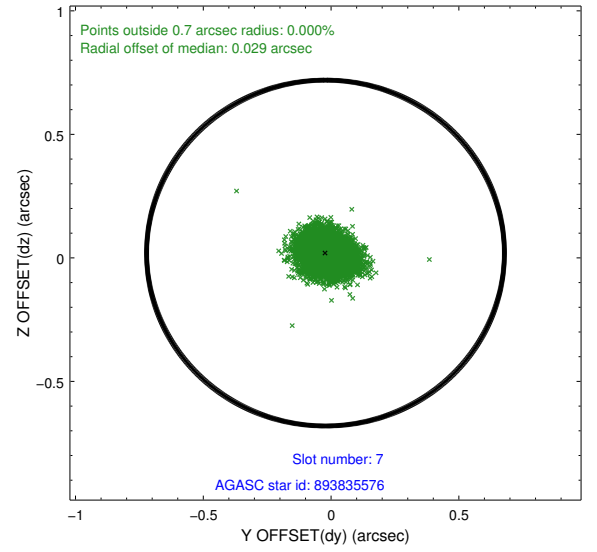
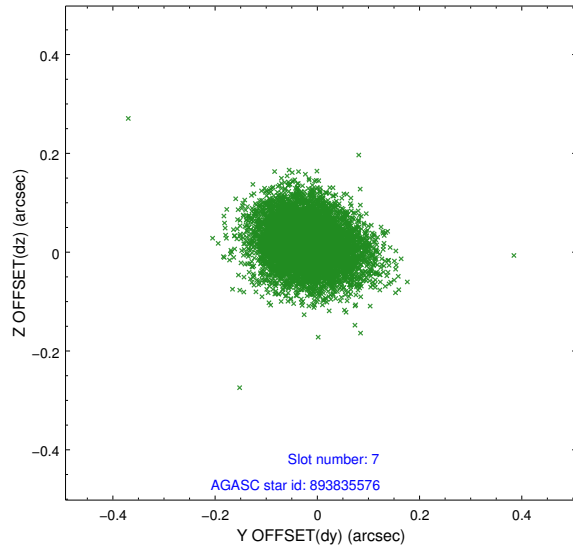


## 2.4.4 Slot 6



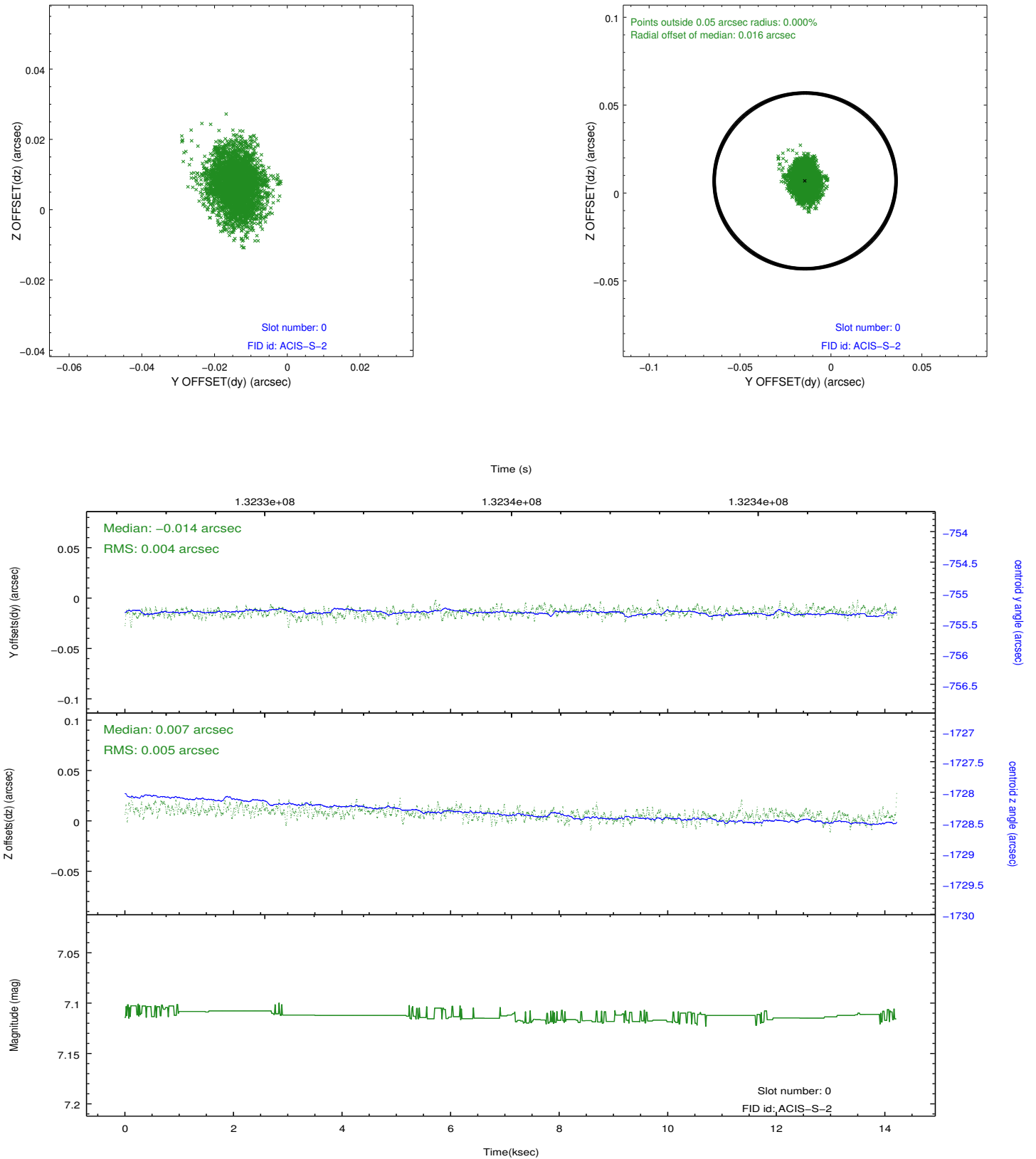


## 2.4.5 Slot 7

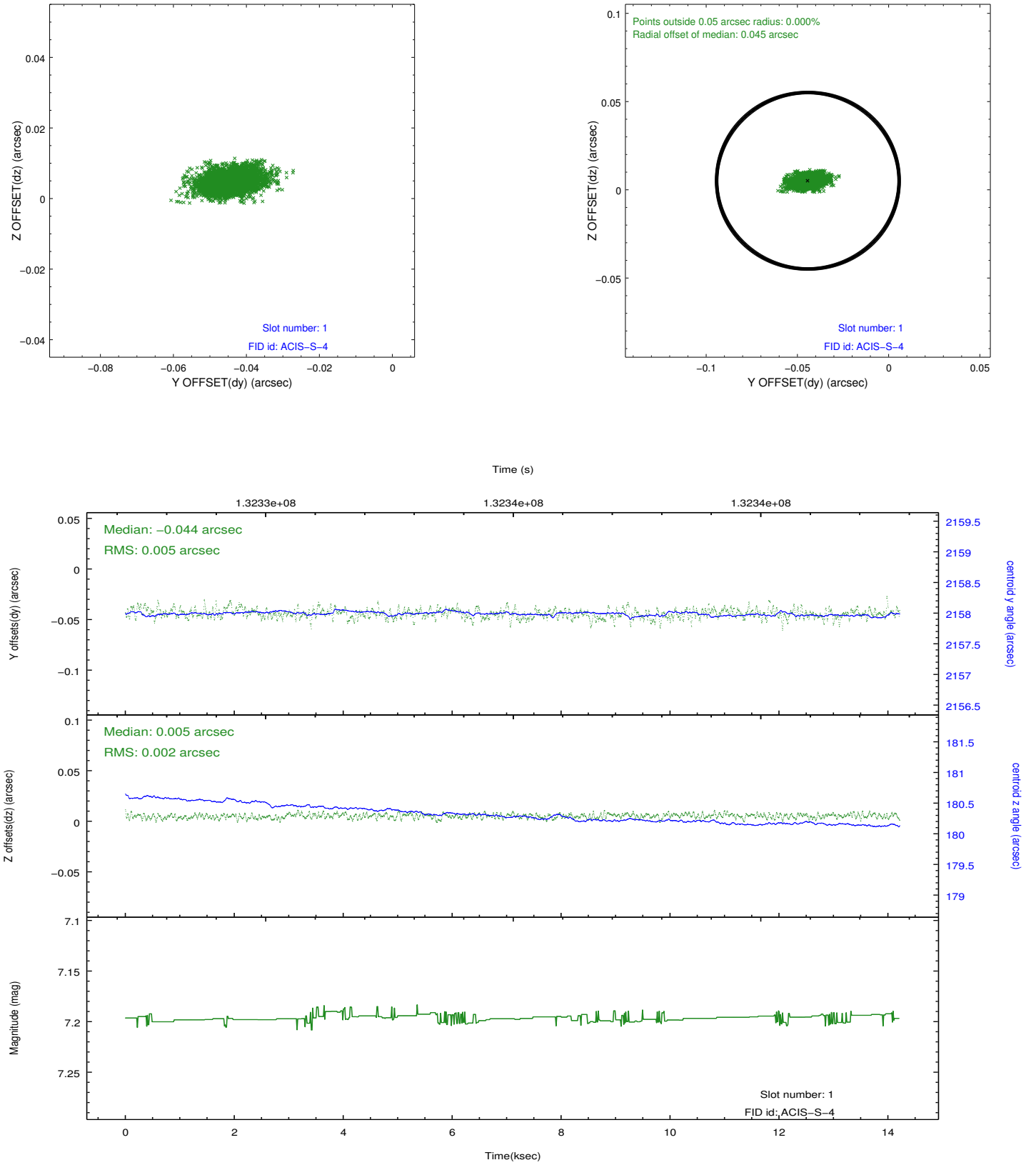


## 2.5 FID Slots

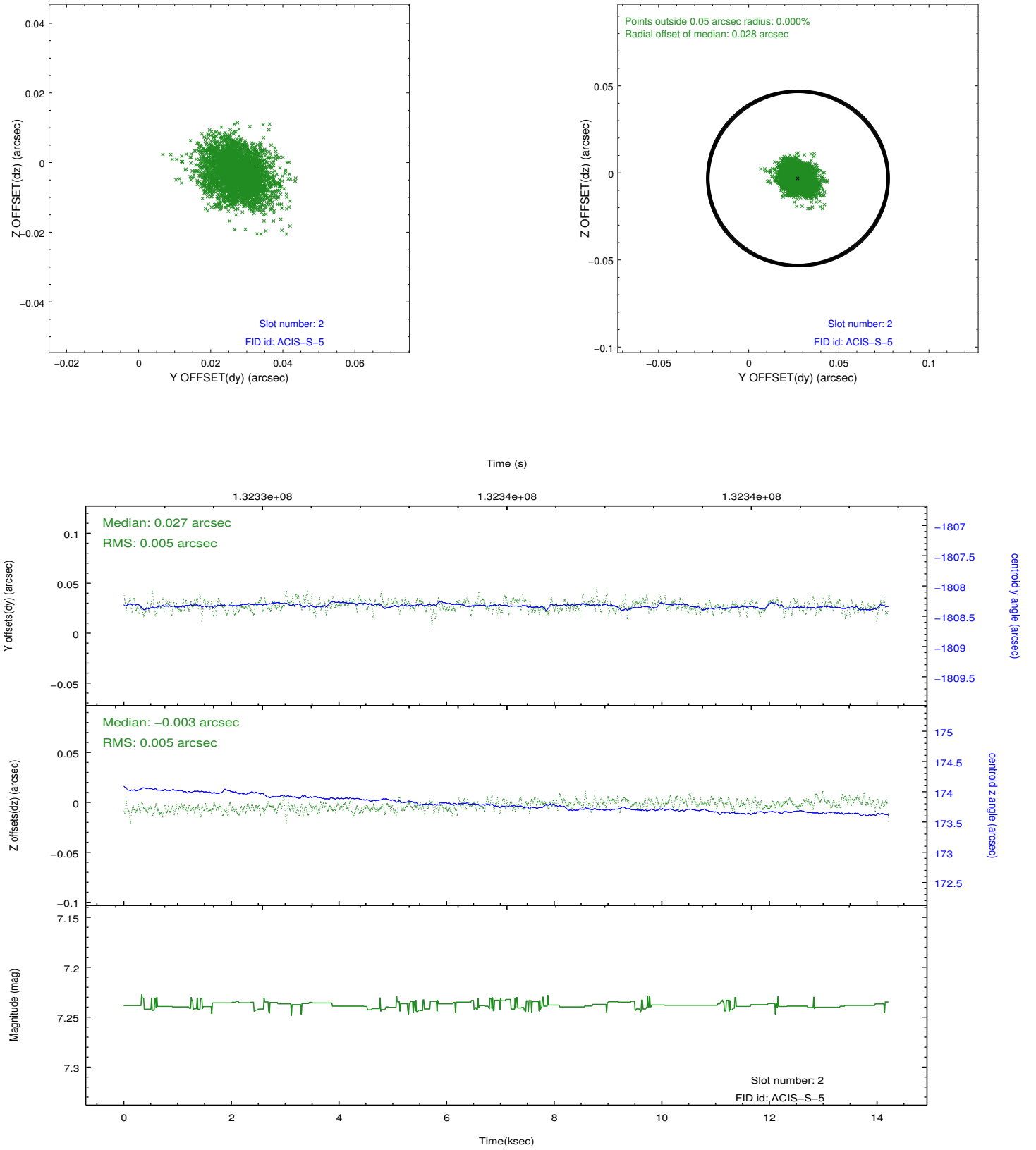
### 2.5.1 Slot 0



## 2.5.2 Slot 1



### 2.5.3 Slot 2



## A Summary

### A.1 Status

V&V Scientist	Joy Nichols
V&V Date (YYYY-MM-DD)	2012.10.04
V&V Edition	1
V&V Disposition and Status	OK
V&V Charge Time	14.21

### A.2 Comments