

V&V Reference Report

L2 ASCDS Version : 7.6.9

Observation 3342 - L2 Version 001
Chandra X-Ray Center

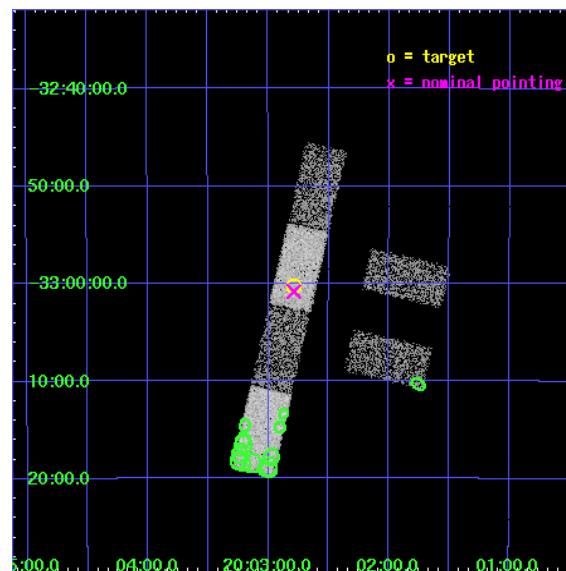
L2 Processing Date : Oct 7 2006

Contents

1	Front	2
2	OBI	3
2.1	OBI	3
2.1.1	Images	3
2.1.2	Bias	3
2.1.3	Parameters	4
2.1.4	Events	4
2.2	Compared Parameters	5
2.3	Aspect	6
2.4	Star Slots	9
2.4.1	Slot 3	9
2.4.2	Slot 4	10
2.4.3	Slot 5	11
2.4.4	Slot 6	12
2.4.5	Slot 7	13
2.5	FID Slots	14
2.5.1	Slot 0	14
2.5.2	Slot 1	15
2.5.3	Slot 2	16
3	Point Sources	17
A	Summary	18
A.1	Status	18
A.2	Comments	18

1 Front

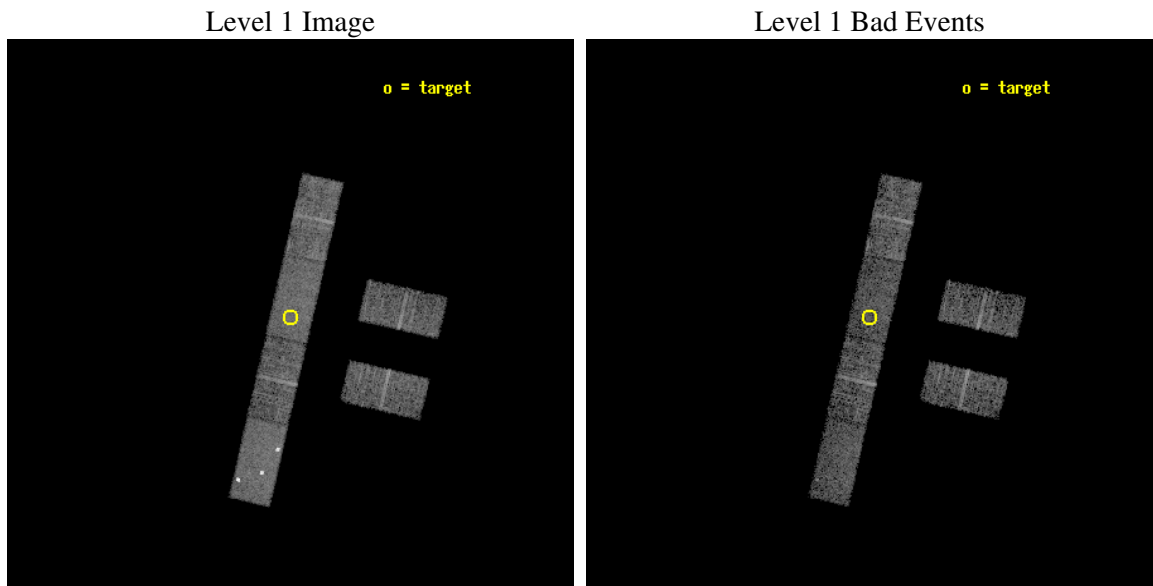
seq_num	900181
obs_id	3342
title	THE SHEEP SURVEY: WHAT KIND OF OBJECTS MAKE THE X-RAY BACKGROUND?
observer	Professor Kirpal Nandra
object	AX J2002.7-3300
dtcycle	0
cycle	P
ra_targ	300.69625
dec_targ	-33.004167
ra_nom	300.69678552982
dec_nom	-33.013768802852
roll_nom	282.97255910235
revision	2
ontime	5401.8000357747
livetime	5281.3844698619
ontime2	5401.8000357747
ontime3	5401.8000357747
ontime5	5401.8000357747
ontime6	5401.8000357747
ontime7	5401.8000357747
ontime8	5401.8000357747
l2events	28247



2 OBI

2.1 OBI

2.1.1 Images



2.1.2 Bias

Chip 2

Chip 3

Chip 5



Chip 6

Chip 7

Chip 8



2.1.3 Parameters

obi_num	0
ascdsver	7.6.9
caldbver	3.2.3
date	2006-10-07T06:00:17
revision	2

sched_exp_time	5000.000000
ontime	5405.2277543843
ontime2	5405.2277543843
ontime3	5405.2277543843
ontime5	5405.2277543843
ontime6	5405.2277543843
ontime7	5405.2277543843
ontime8	5405.2277543843
l1events	140875

2.1.4 Events

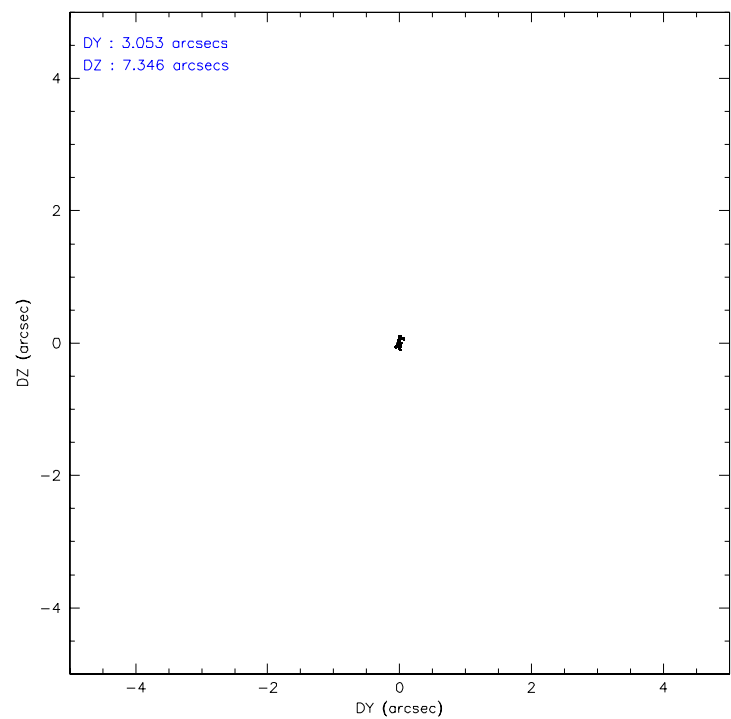
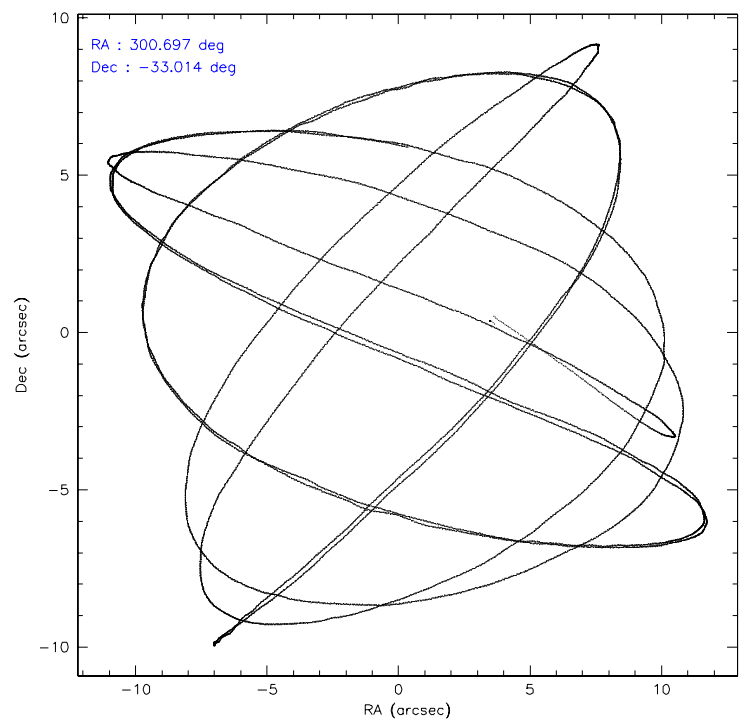
	ccd 2	ccd 3	ccd 5	ccd 6	ccd 7	ccd 8
level 1 events	20107	19193	33068	19580	24134	24793
rejected events	17875	17011	14473	17182	14530	20129
rejected %	88%	88%	43%	87%	60%	81%

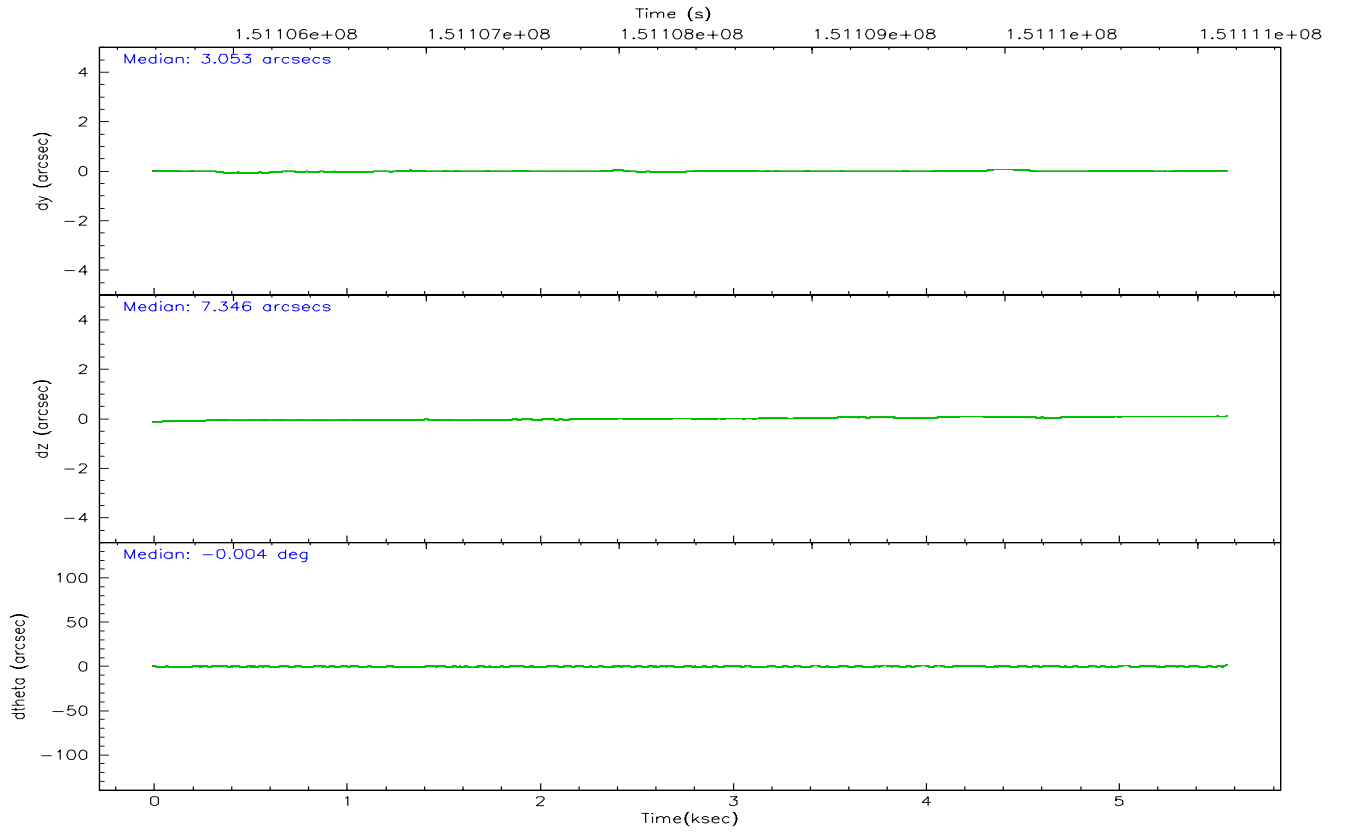
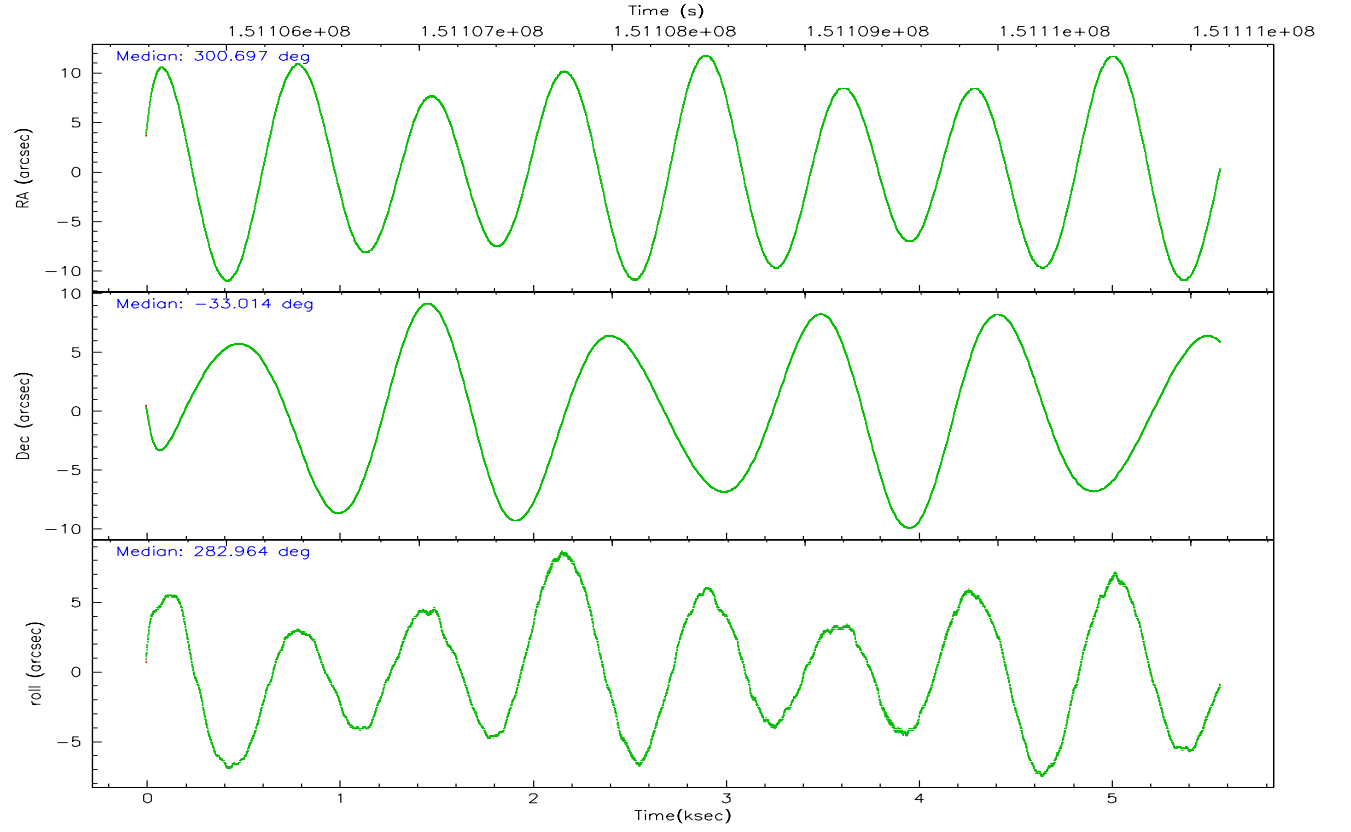
	ccd 2	ccd 3	ccd 5	ccd 6	ccd 7	ccd 8
grade 0 events	913	978	5386	976	638	1510
	4%	5%	16%	4%	2%	6%
grade 1 events	10	12	94	10	9	13
	0%	0%	0%	0%	0%	0%
grade 2 events	425	354	5969	446	2432	983
	2%	1%	18%	2%	10%	3%
grade 3 events	272	287	319	248	649	504
	1%	1%	0%	1%	2%	2%
grade 4 events	257	228	357	279	561	530
	1%	1%	1%	1%	2%	2%
grade 5 events	656	755	1352	819	1663	964
	3%	3%	4%	4%	6%	3%
grade 6 events	365	337	6580	450	5332	1137
	1%	1%	19%	2%	22%	4%
grade 7 events	17209	16242	13011	16352	12850	19152
	85%	84%	39%	83%	53%	77%

2.2 Compared Parameters

Parameter	Planned	Actual	Parameter	Planned	Actual
Instrument	ACIS	ACIS	Obspar format version number	6	6
Detector	ACIS-235678	ACIS-235678	Obspar file type	PREDICTED	ACTUAL
Grating	NONE	NONE	Obspar update status	NONE	UPDATED
Data mode	FAINT	FAINT	Number of optional ACIS chips dropped	0	0
Observation mode	POINTING	POINTING	On-chip summing requested	N	N
Pointing RA	300.674381	300.696785529818	Subarray requested	1/2	1/2
Pointing Dec	-32.994149	-33.01376880285162	Subarray start row	0	257
Pointing Roll	282.803724	282.97255910235	Subarray row count	1024	512
SIM focus pos (mm)	-0.684267	-0.6828225247311905	Alternating exposures requested	N	N
SIM defocus (mm)	0	0.001444936568705701	Primary exposure time	0.000000	1.8
SIM translation stage pos (mm)	-190.132523	-190.1400660498719			
SIM translation stage offset (mm)	0	0.00754346686406393			
Observation start time	151106144.184000	151104993.02735			
Observation start date	2002-10-15T21:54:40	2002-10-15T21:36:33			
Observation end time	151111144.184000	151111742.65263			
Observation end date	2002-10-15T23:18:00	2002-10-15T23:29:02			
Read mode	TIMED	TIMED			

2.3 Aspect



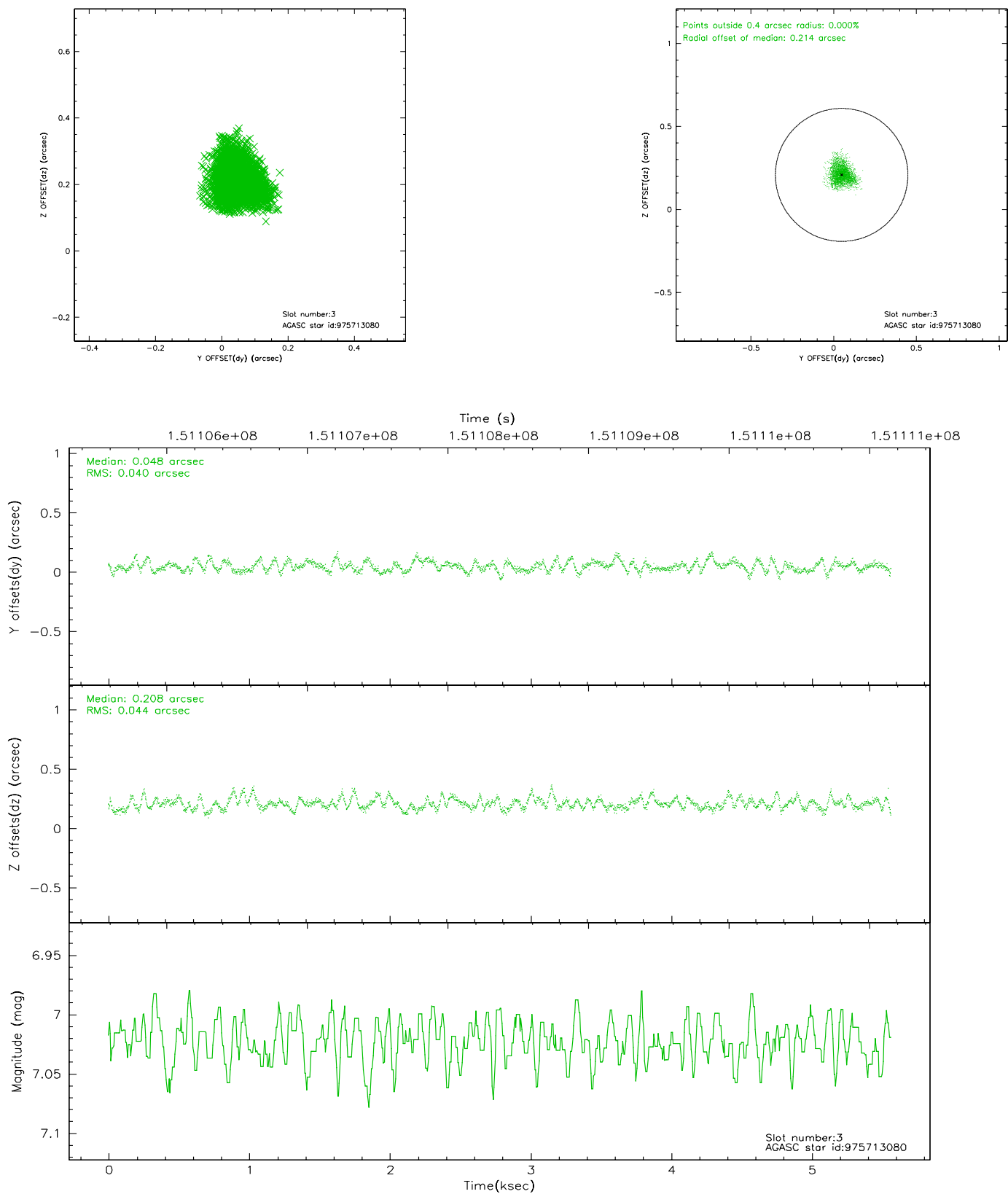


Slot Statistics

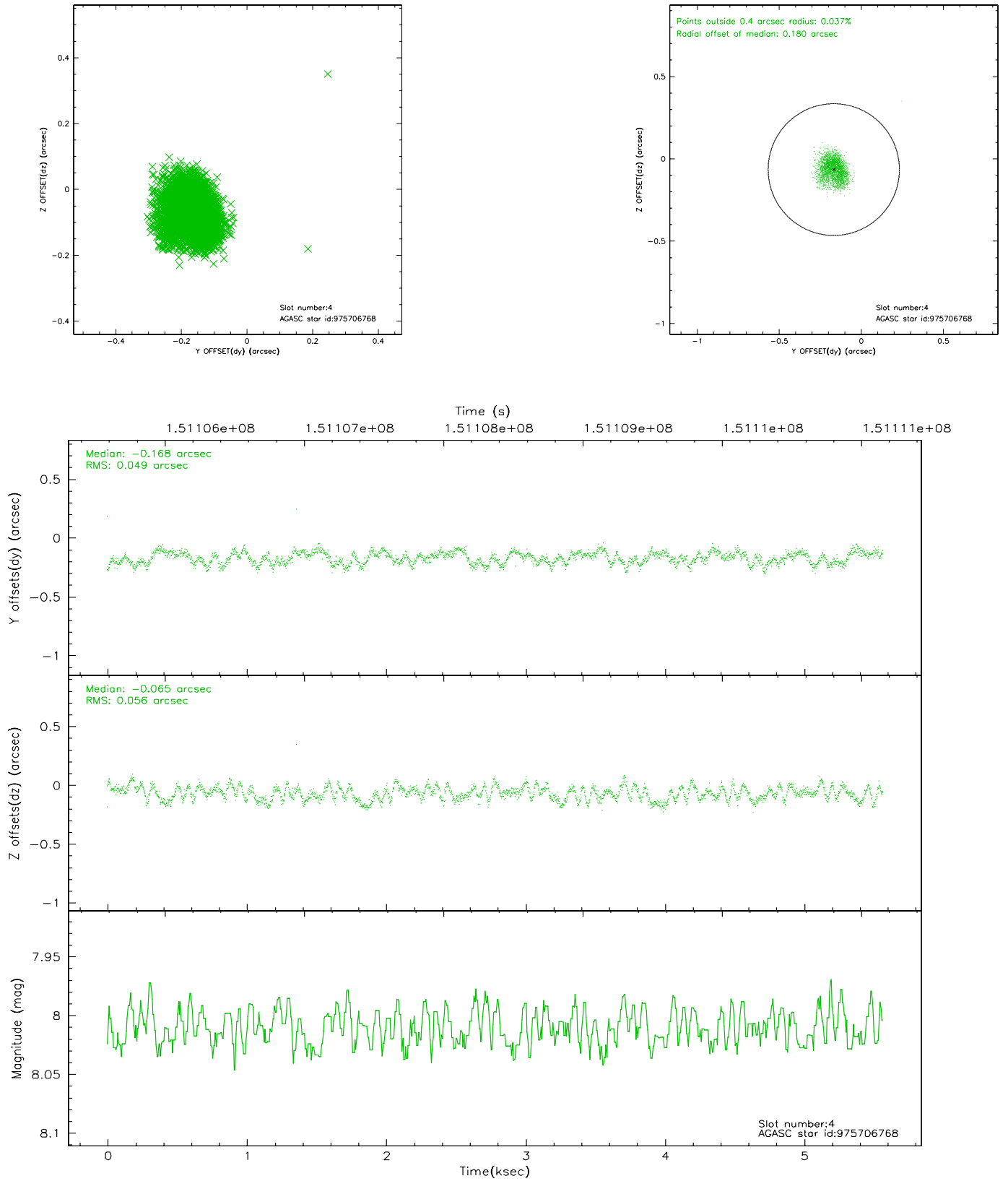
slot	status	id	mag	n_pts	med_dy	med_dz	dr1	dr2	ra	dec	mean_y	mean_z
0	FID	ACIS-S-2	7.12	1359	-0.006	0.017	0.006	0.011	0.000000	0.000000	-755.71	-1728.51
1	FID	ACIS-S-4	7.21	1359	-0.038	-0.002	0.005	0.009	0.000000	0.000000	2157.06	178.83
2	FID	ACIS-S-5	7.24	1358	0.012	-0.006	0.006	0.010	0.000000	0.000000	-1807.14	173.74
3	GUIDE	975713080	7.02	2717	0.048	0.208	0.063	0.103	301.383468	-32.999843	501.33	2082.10
4	GUIDE	975706768	8.01	2717	-0.168	-0.065	0.081	0.122	299.861985	-32.701443	-1563.23	-2167.72
5	GUIDE	975710328	7.98	2716	0.075	-0.032	0.041	0.068	300.444232	-33.286816	874.40	-909.45
6	GUIDE	975705832	8.98	2716	-0.010	-0.006	0.086	0.140	299.875194	-33.036396	-376.46	-2387.76
7	GUIDE	975704872	8.87	2716	0.053	-0.100	0.071	0.110	300.080943	-32.667354	-1540.62	-1495.08

2.4 Star Slots

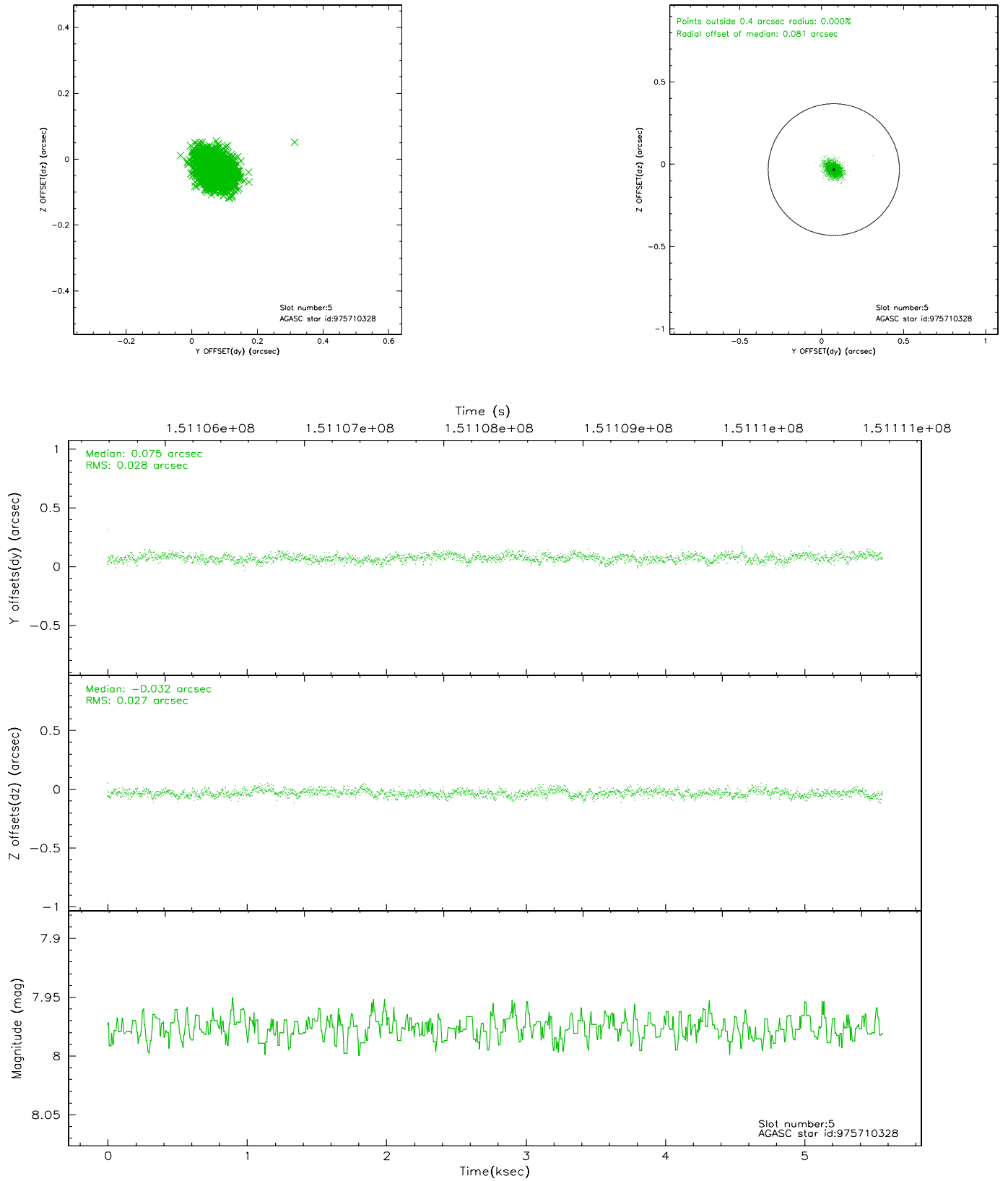
2.4.1 Slot 3



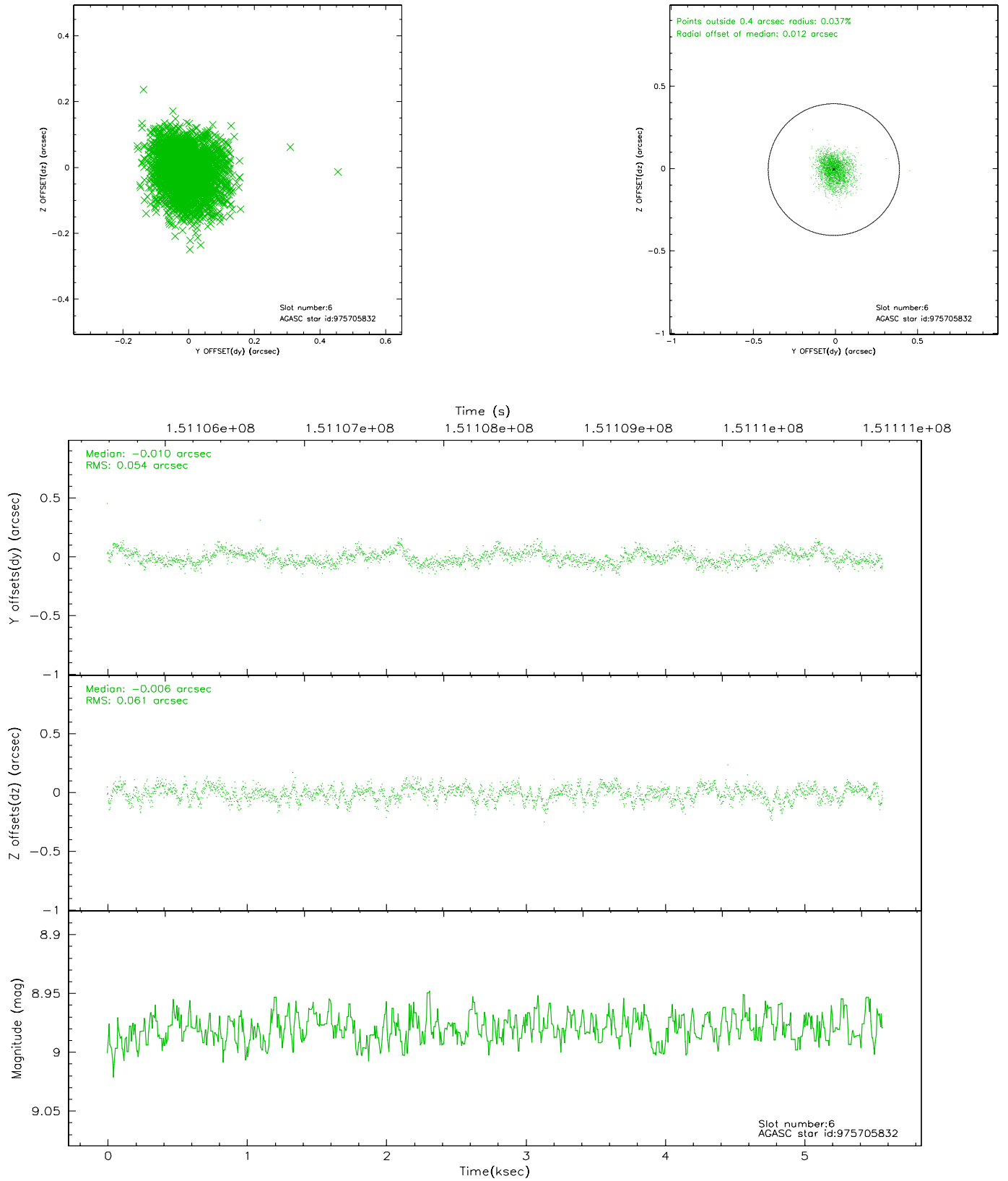
2.4.2 Slot 4



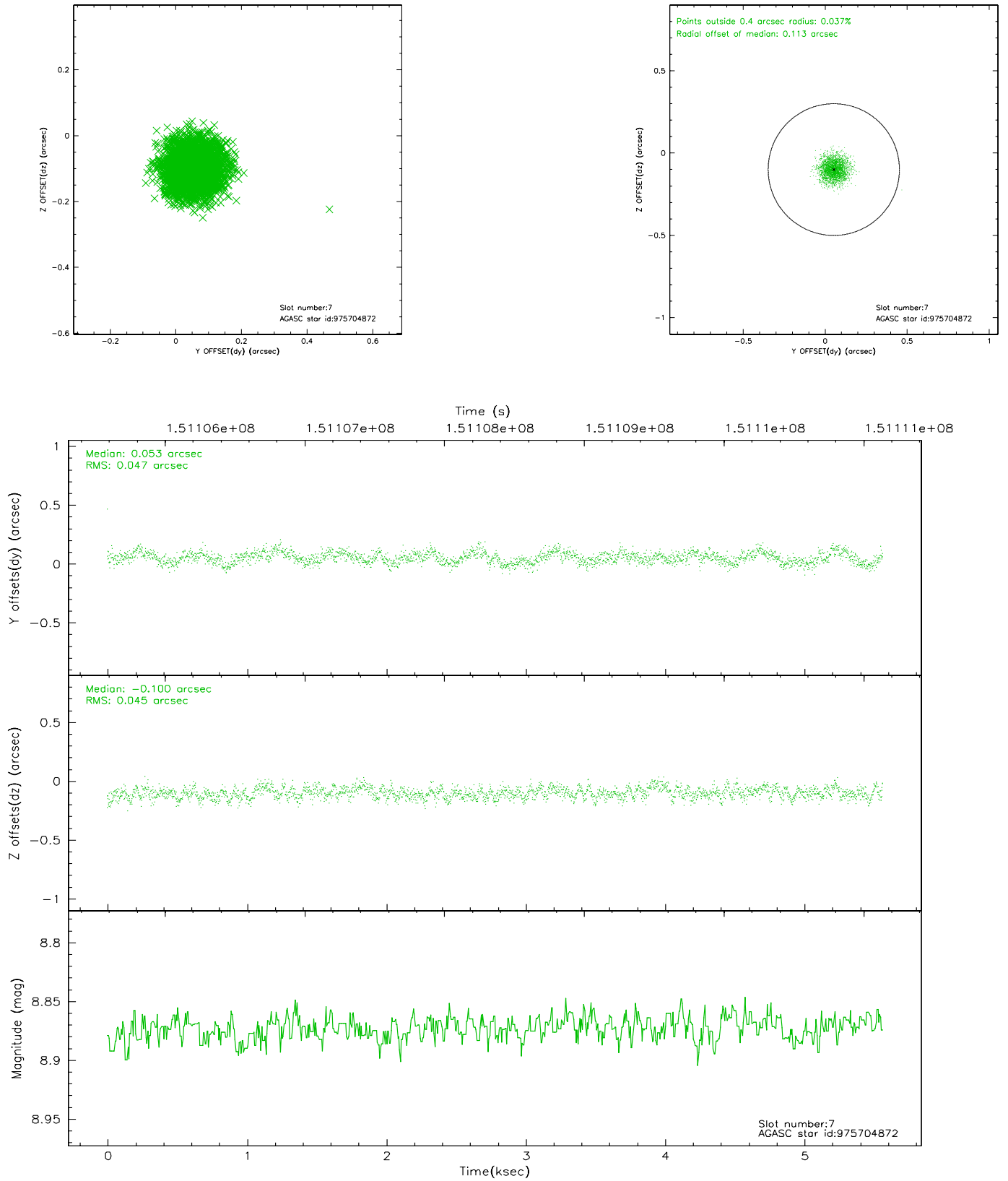
2.4.3 Slot 5



2.4.4 Slot 6

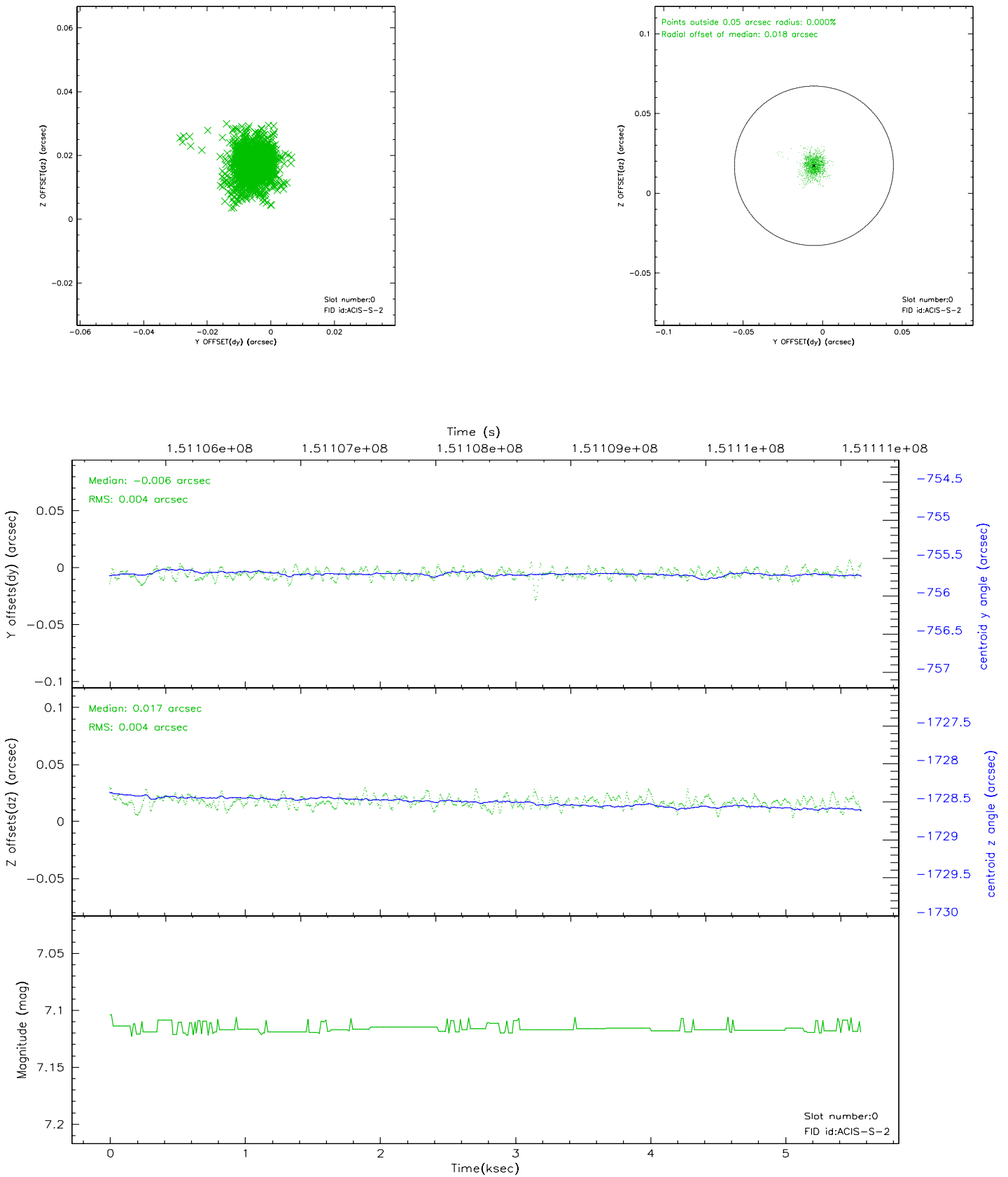


2.4.5 Slot 7

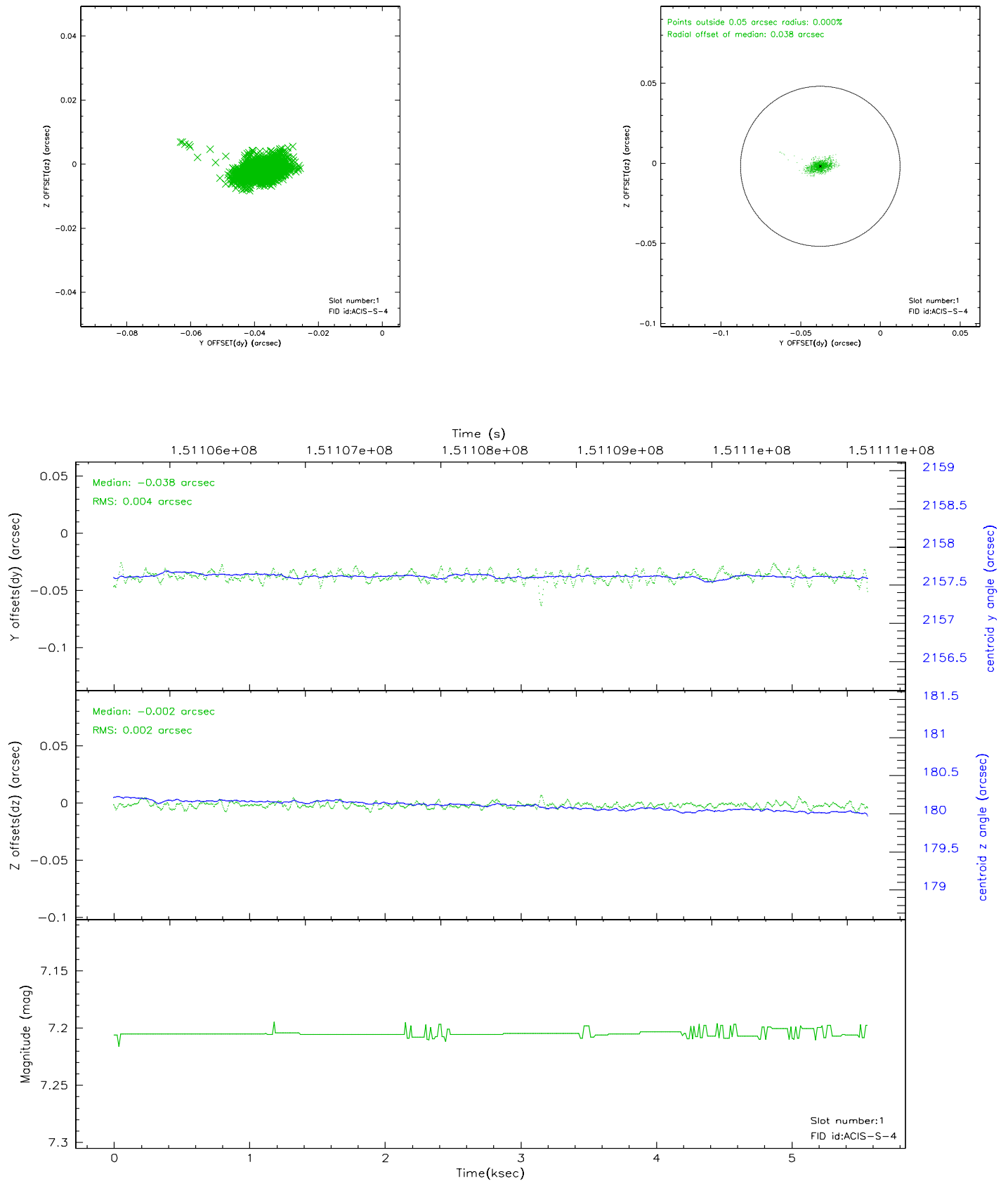


2.5 FID Slots

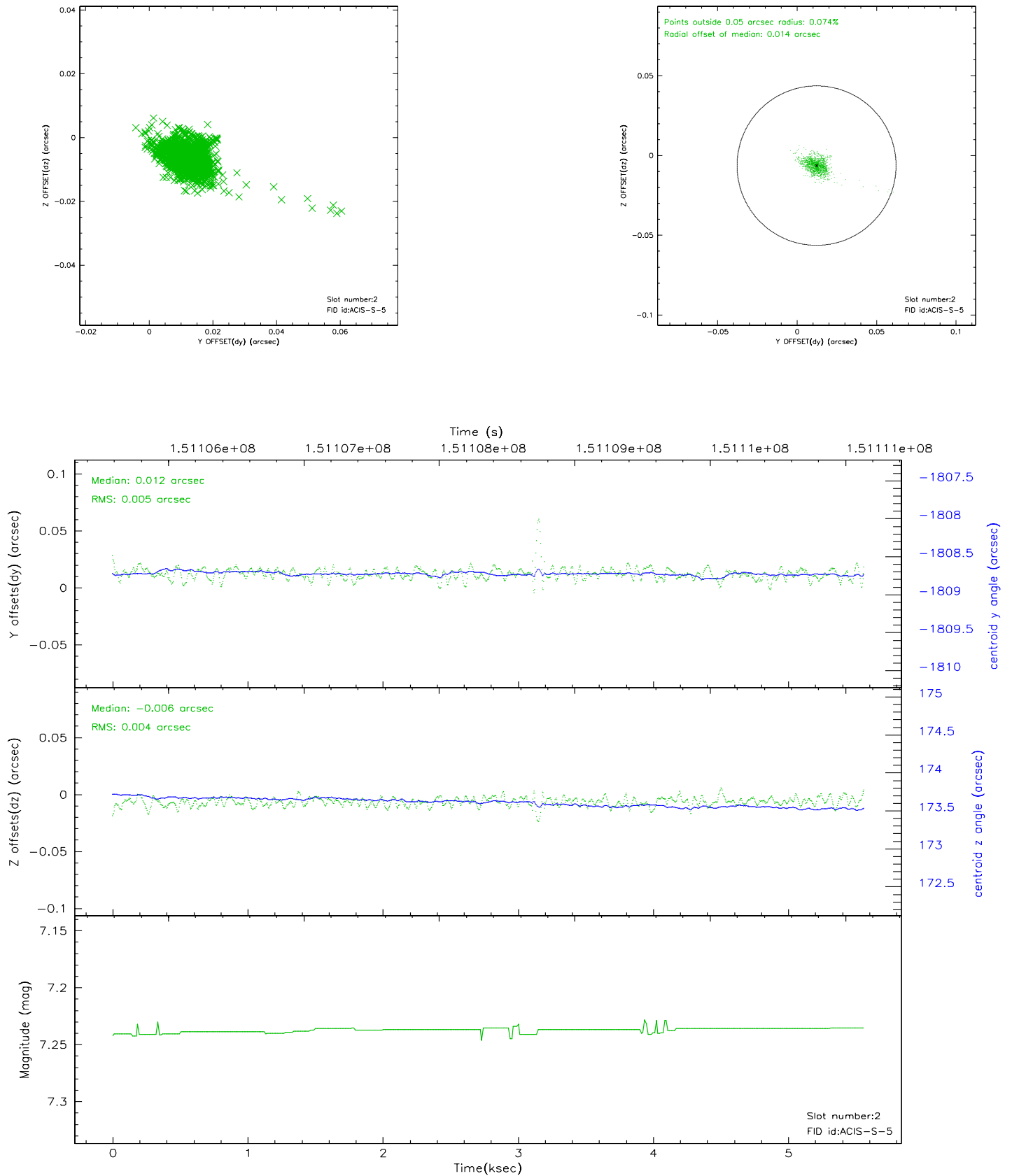
2.5.1 Slot 0



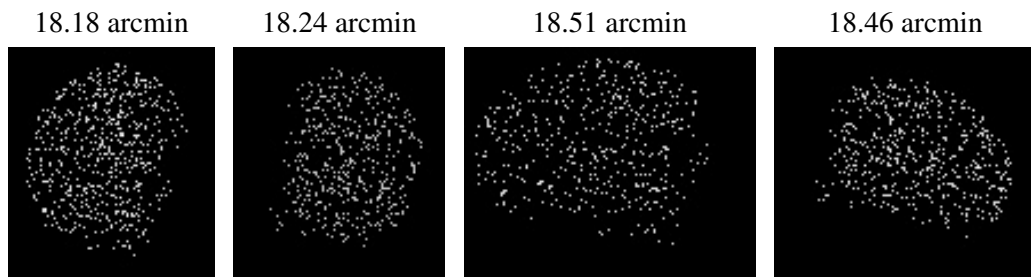
2.5.2 Slot 1



2.5.3 Slot 2



3 Point Sources



A Summary

A.1 Status

V&V Scientist	Jen Lauer
V&V Date (YYYY-MM-DD)	2006.10.08
V&V Edition	1
V&V Disposition and Status	OK
V&V Charge Time	5.403

A.2 Comments