

# V&V Reference Report

## L2 ASCDS Version : 7.6.9

Observation 3302 - L2 Version 001  
Chandra X-Ray Center

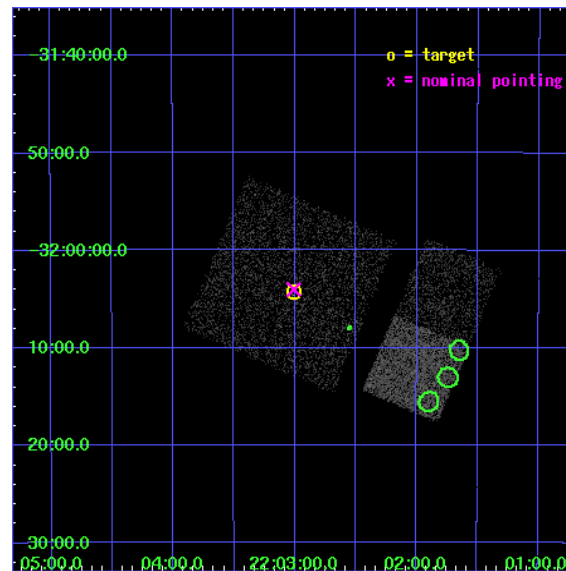
L2 Processing Date : Sep 15 2006

## Contents

<b>1</b>	<b>Front</b>	<b>2</b>
<b>2</b>	<b>OBI</b>	<b>3</b>
2.1	OBI . . . . .	3
2.1.1	Images . . . . .	3
2.1.2	Bias . . . . .	3
2.1.3	Parameters . . . . .	4
2.1.4	Events . . . . .	4
2.2	Compared Parameters . . . . .	5
2.3	Aspect . . . . .	6
2.4	Star Slots . . . . .	9
2.4.1	Slot 3 . . . . .	9
2.4.2	Slot 4 . . . . .	10
2.4.3	Slot 5 . . . . .	11
2.4.4	Slot 6 . . . . .	12
2.4.5	Slot 7 . . . . .	13
2.5	FID Slots . . . . .	14
2.5.1	Slot 0 . . . . .	14
2.5.2	Slot 1 . . . . .	15
2.5.3	Slot 2 . . . . .	16
<b>3</b>	<b>Point Sources</b>	<b>17</b>
<b>A</b>	<b>Summary</b>	<b>18</b>
A.1	Status . . . . .	18
A.2	Comments . . . . .	18

# 1 Front

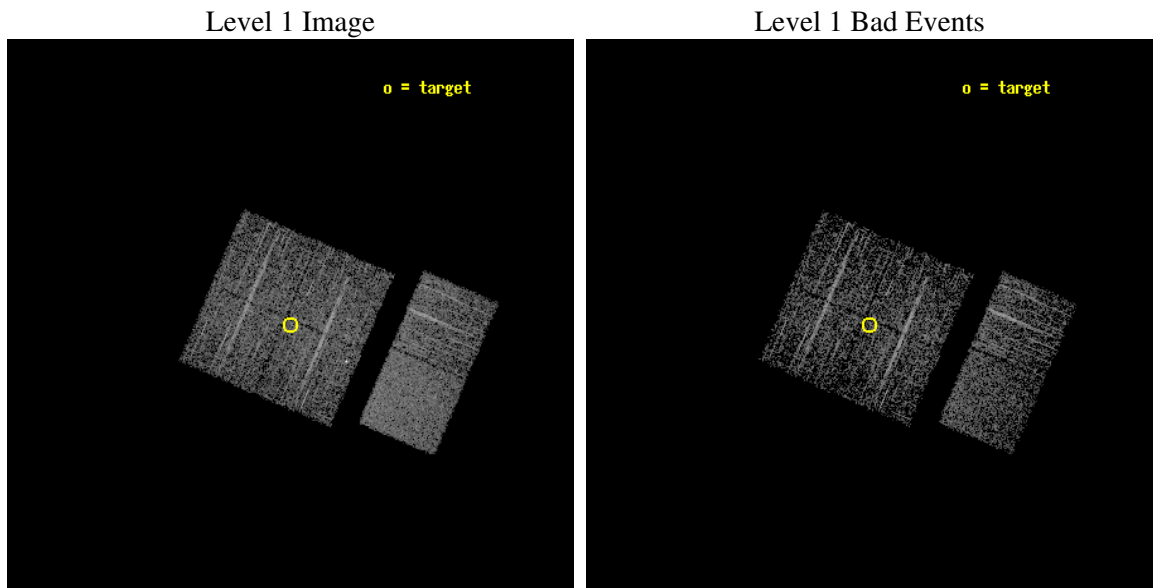
seq_num	900141
obs_id	3302
title	A CHEAP COMPLETE WIDE BRIGHT SURVEY
observer	DR. FABIO LA FRANCA
object	H220301
dtcycle	0
cycle	P
ra_targ	330.752083
dec_targ	-32.071667
ra_nom	330.75200667229
dec_nom	-32.06716442553
roll_nom	113.23939618711
revision	2
ontime	2255.9999915957
livetime	2227.4331613021
ontime0	2255.9585620463
ontime1	2255.9996020198
ontime2	2255.9999915957
ontime3	2255.9999915957
ontime6	2255.9999915957
ontime7	2255.9999915957
l2events	15093



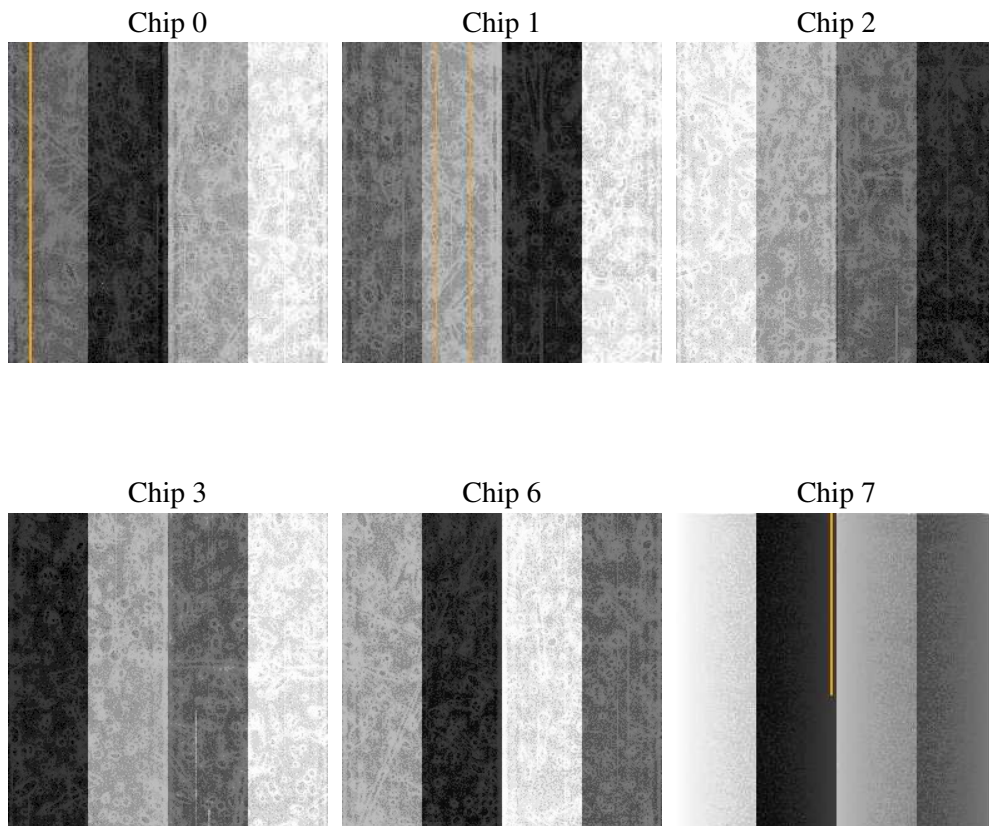
## 2 OBI

### 2.1 OBI

#### 2.1.1 Images



#### 2.1.2 Bias



### 2.1.3 Parameters

obi_num	0
ascdsver	7.6.9
caldsver	3.2.3
date	2006-09-15T03:33:03
revision	2

sched_exp_time	2500.000000
ontime	2258.9809719026
ontime0	2258.9809719026
ontime1	2258.9809719026
ontime2	2258.9809419811
ontime3	2258.9809719026
ontime6	2258.9809419811
ontime7	2258.9809719026
l1events	91402

### 2.1.4 Events

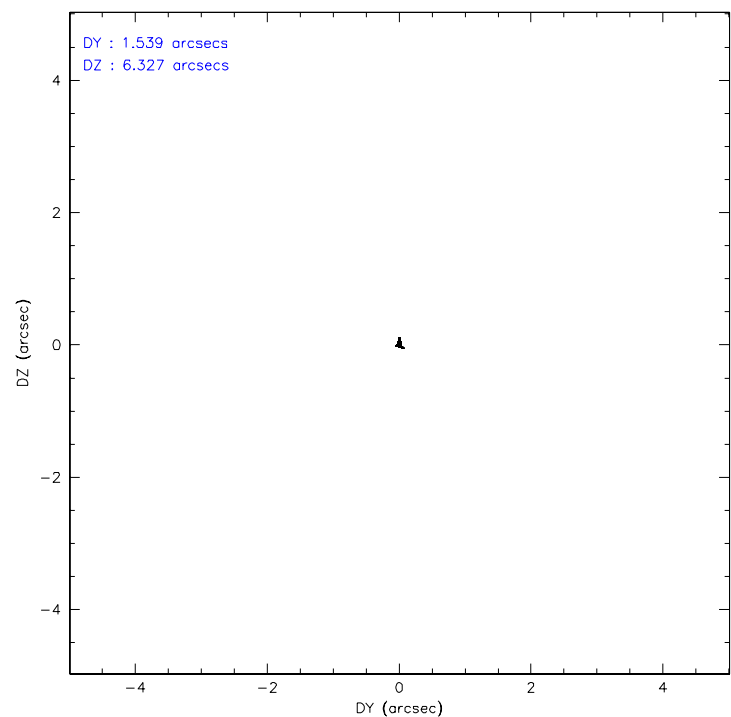
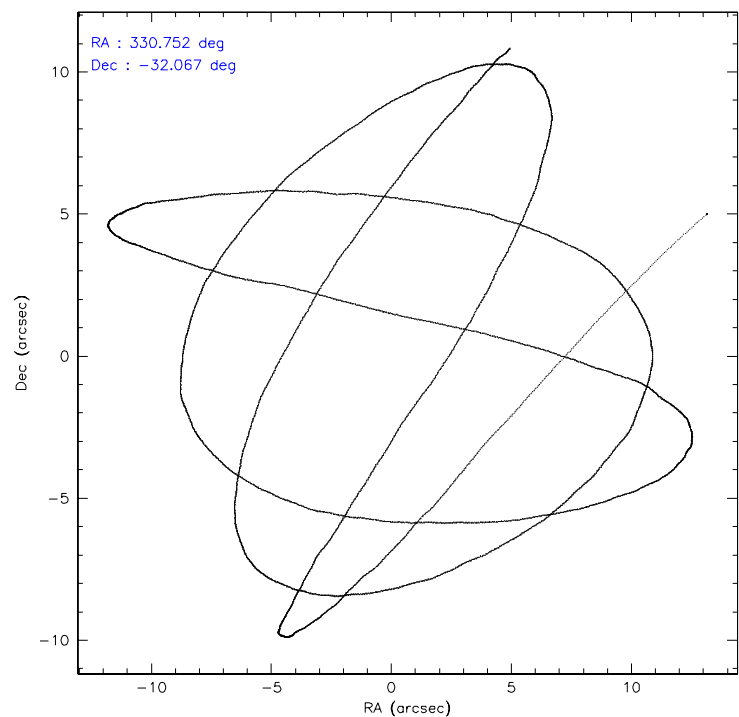
	ccd 0	ccd 1	ccd 2	ccd 3	ccd 6	ccd 7
level 1 events	13371	13757	14533	14483	15921	19337
rejected events	11624	12003	12756	12444	14106	12015
rejected %	86%	87%	87%	85%	88%	62%

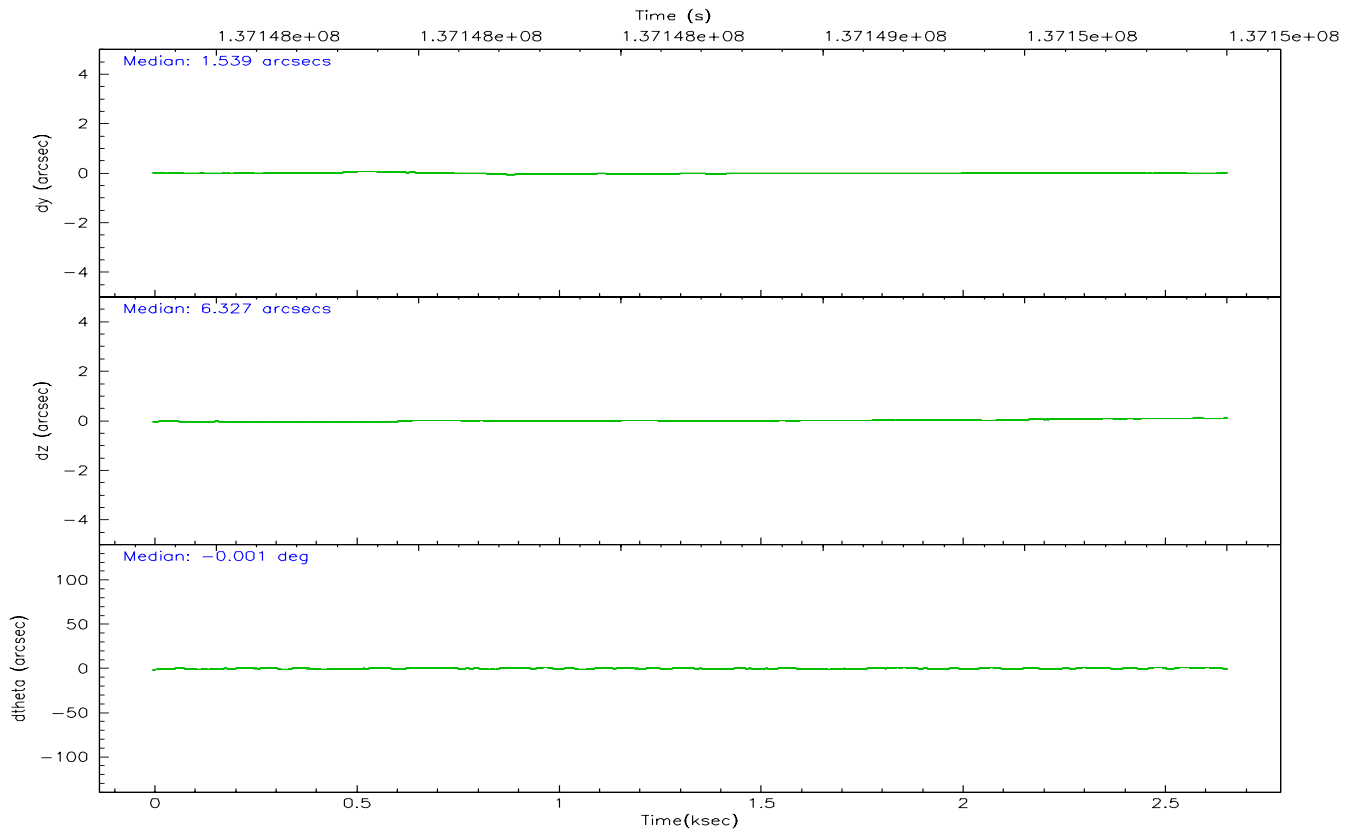
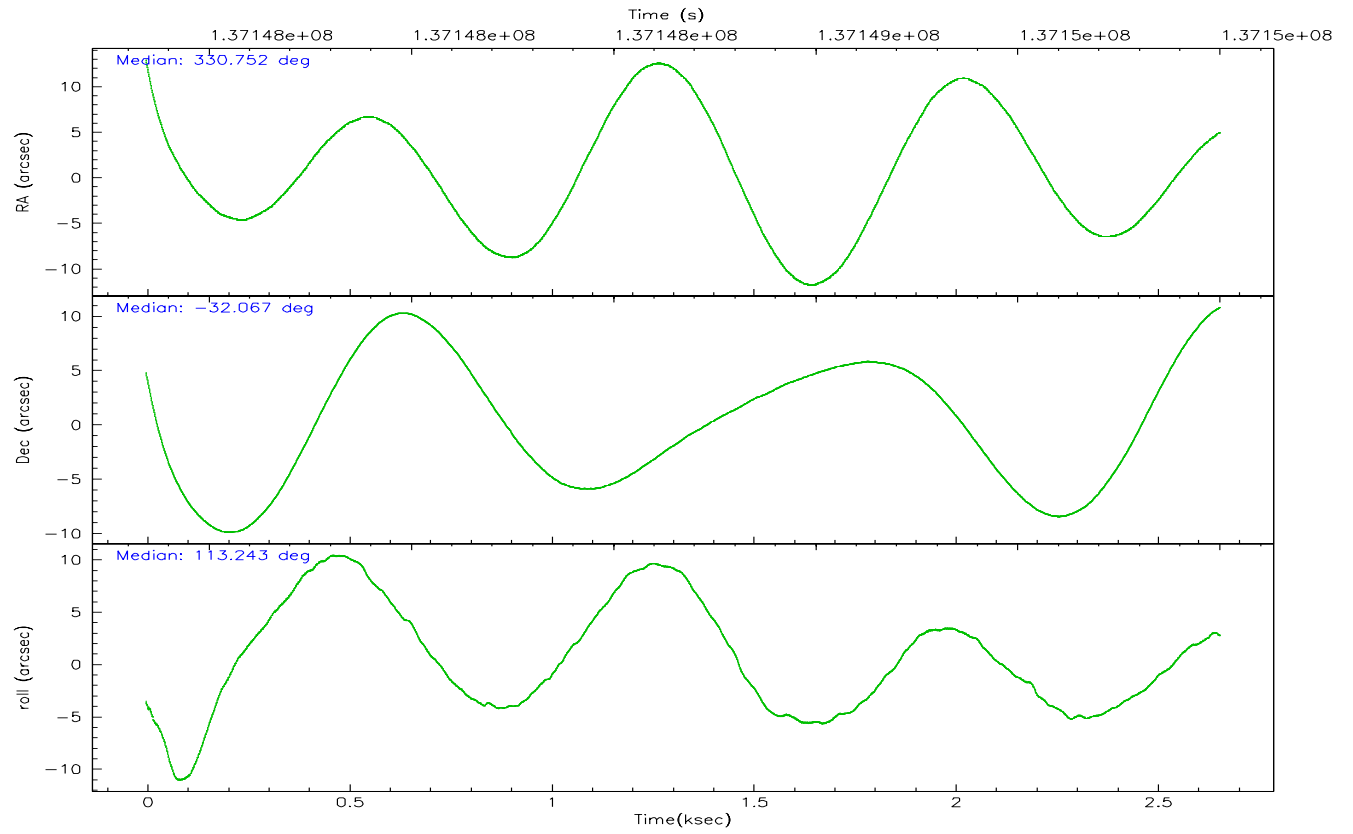
	ccd 0	ccd 1	ccd 2	ccd 3	ccd 6	ccd 7
grade 0 events	785	700	754	1020	731	454
	5%	5%	5%	7%	4%	2%
grade 1 events	5	8	2	5	3	8
	0%	0%	0%	0%	0%	0%
grade 2 events	335	377	415	405	346	1797
	2%	2%	2%	2%	2%	9%
grade 3 events	161	184	166	164	178	371
	1%	1%	1%	1%	1%	1%
grade 4 events	144	168	149	134	174	368
	1%	1%	1%	0%	1%	1%
grade 5 events	553	611	521	600	709	1403
	4%	4%	3%	4%	4%	7%
grade 6 events	322	328	298	320	391	4341
	2%	2%	2%	2%	2%	22%
grade 7 events	11066	11381	12228	11835	13389	10595
	82%	82%	84%	81%	84%	54%

## 2.2 Compared Parameters

Parameter	Planned	Actual	Parameter	Planned	Actual
Instrument	ACIS	ACIS	Obspar format version number	6	6
Detector	ACIS-012367	ACIS-012367	Obspar file type	PREDICTED	ACTUAL
Grating	NONE	NONE	Obspar update status	NONE	UPDATED
Data mode	FAINT	FAINT	Number of optional ACIS chips dropped	0	0
Observation mode	POINTING	POINTING	On-chip summing requested	N	N
Pointing RA	330.778031	330.7520066722901	Subarray requested	NONE	NONE
Pointing Dec	-32.083322	-32.06716442553012	Alternating exposures requested	N	N
Pointing Roll	113.044528	113.2393961871118	Primary exposure time	0.000000	3.2
SIM focus pos (mm)	-0.782348	-0.7809083437167272			
SIM defocus (mm)	0	0.001439871863259334			
SIM translation stage pos (mm)	-233.592463	-233.5874344608287			
SIM translation stage offset (mm)	0	-0.005018542100998502			
Observation start time	137147498.184000	137146544.5035			
Observation start date	2002-05-07T08:30:34	2002-05-07T08:15:44			
Observation end time	137149998.184000	137150707.54117			
Observation end date	2002-05-07T09:12:14	2002-05-07T09:25:07			
Read mode	TIMED	TIMED			

2.3 Aspect





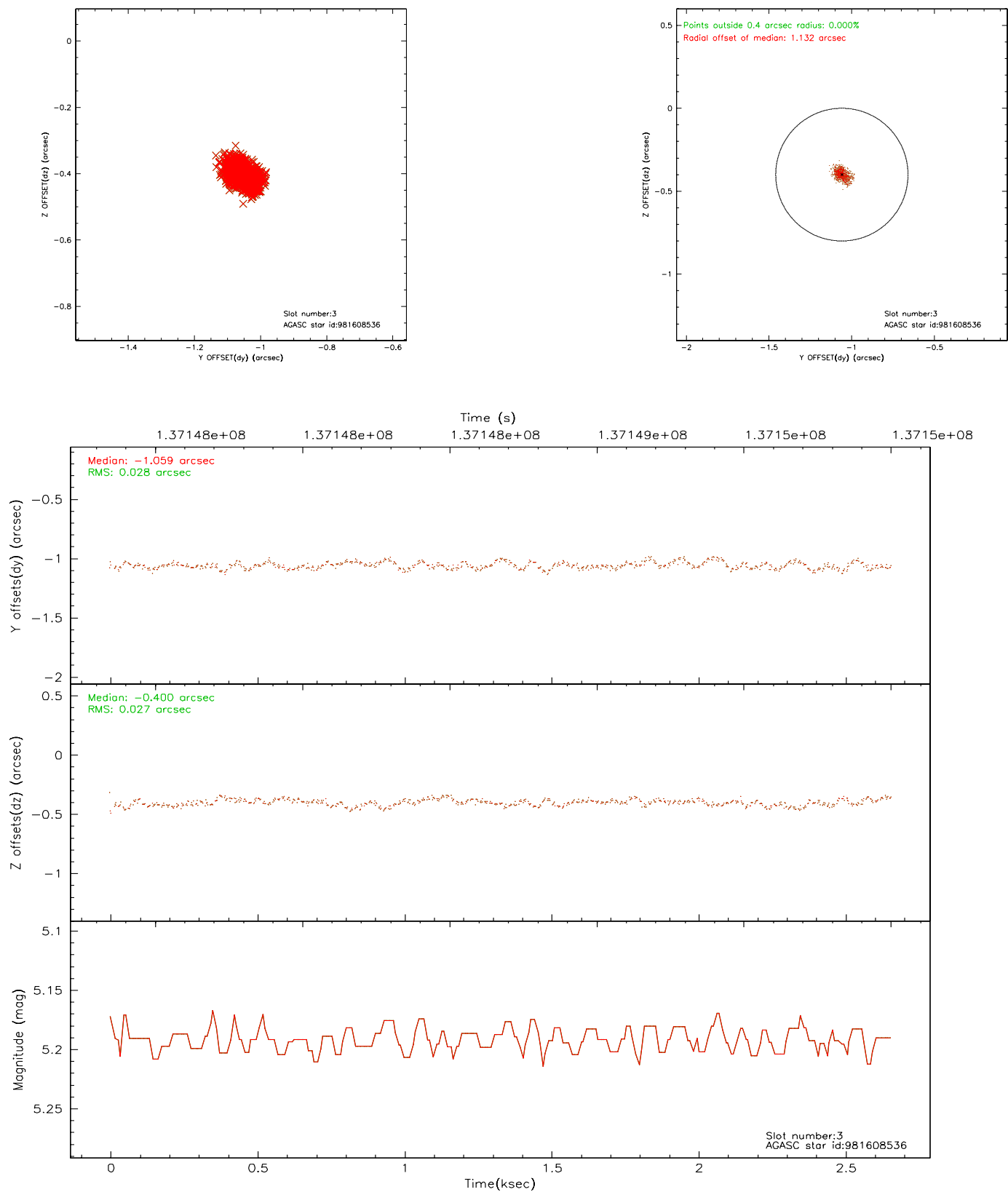
### Slot Statistics

slot	status	id	mag	n_pts	med_dy	med_dz	dr1	dr2	ra	dec	mean_y	mean_z
0	FID	ACIS-I-1	7.25	649	-0.024	0.032	0.006	0.010	0.000000	0.000000	938.25	-829.70
1	FID	ACIS-I-5	7.24	649	-0.033	0.033	0.006	0.009	0.000000	0.000000	-1808.47	1066.64
2	FID	ACIS-I-6	7.26	649	-0.035	0.005	0.006	0.010	0.000000	0.000000	401.22	1713.82
3	BAD	981608536	5.19	810	-1.059	-0.400	0.042	0.070	330.819856	-31.445179	2065.00	-1016.84
4	GUIDE	981604952	8.80	1298	0.231	0.398	0.059	0.099	330.860917	-31.605028	1488.16	-908.23
5	GUIDE	981479688	9.05	1298	-0.178	0.048	0.087	0.137	329.914943	-31.740594	2162.64	1952.04
6	GUIDE	981607328	9.24	1297	0.455	-0.075	0.081	0.133	330.943527	-32.356075	-1097.31	-77.03
7	GUIDE	981612136	9.41	1296	0.151	-0.119	0.079	0.139	330.454781	-32.060593	460.92	875.95

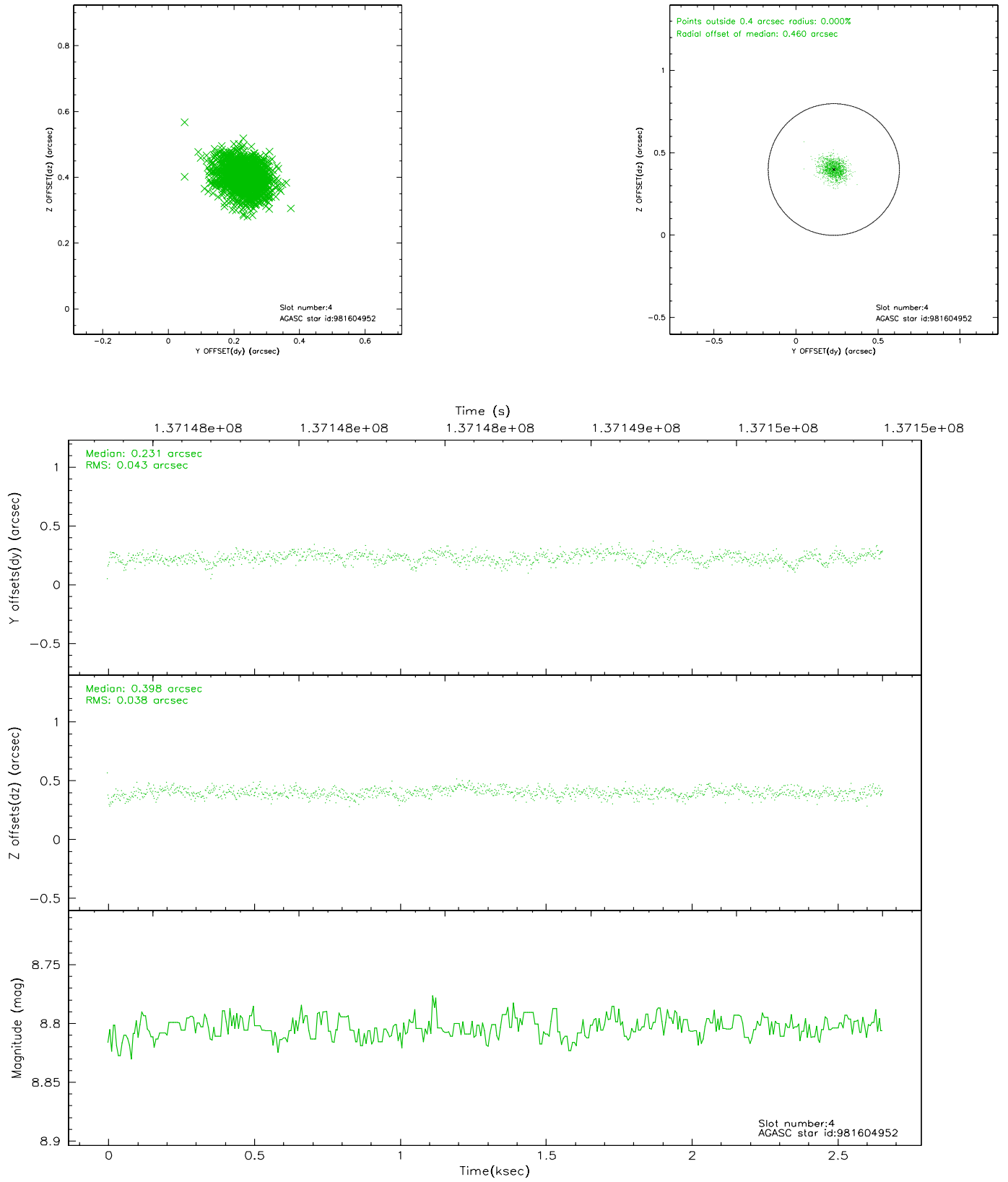


## 2.4 Star Slots

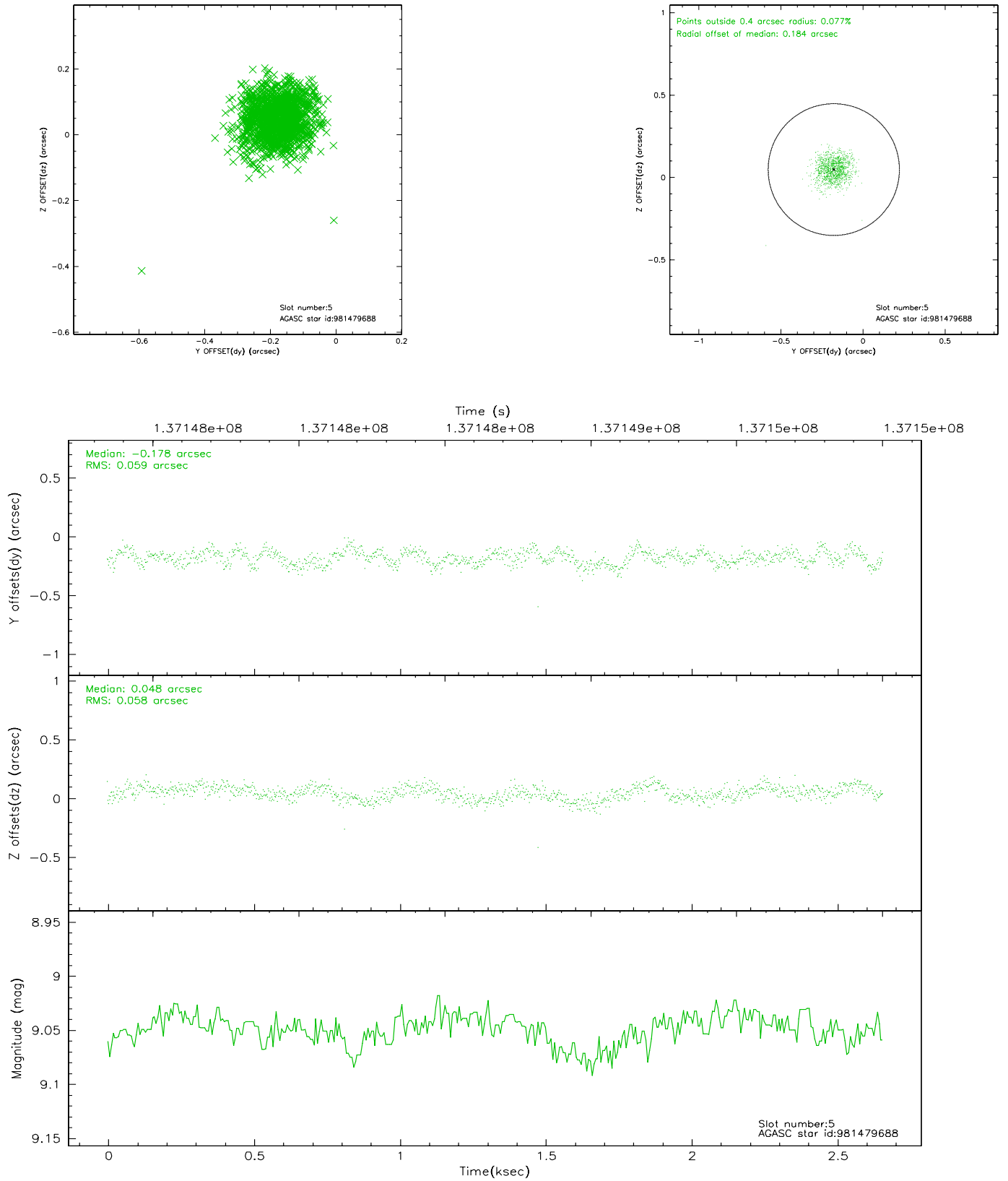
### 2.4.1 Slot 3



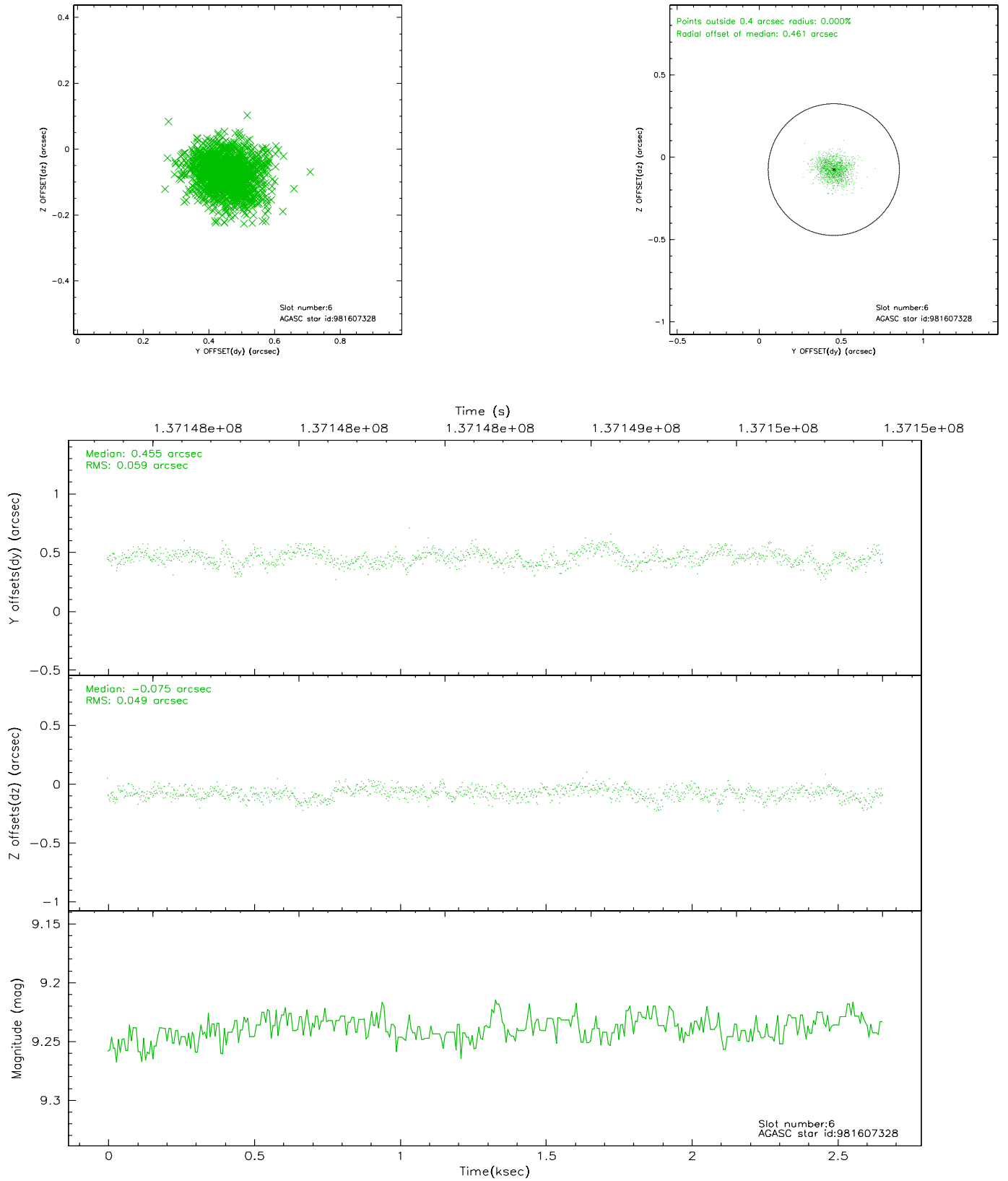
## 2.4.2 Slot 4



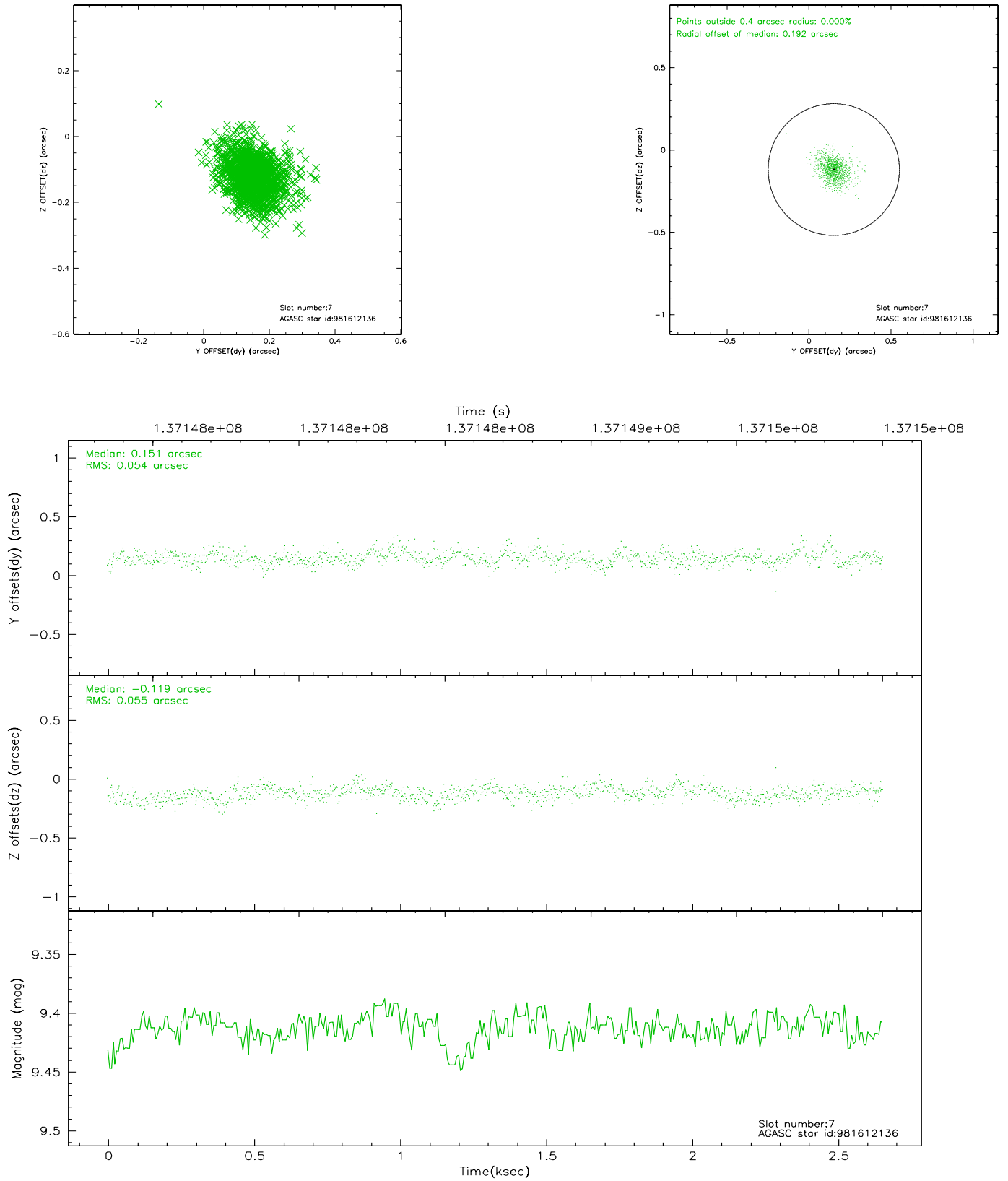
### 2.4.3 Slot 5



## 2.4.4 Slot 6

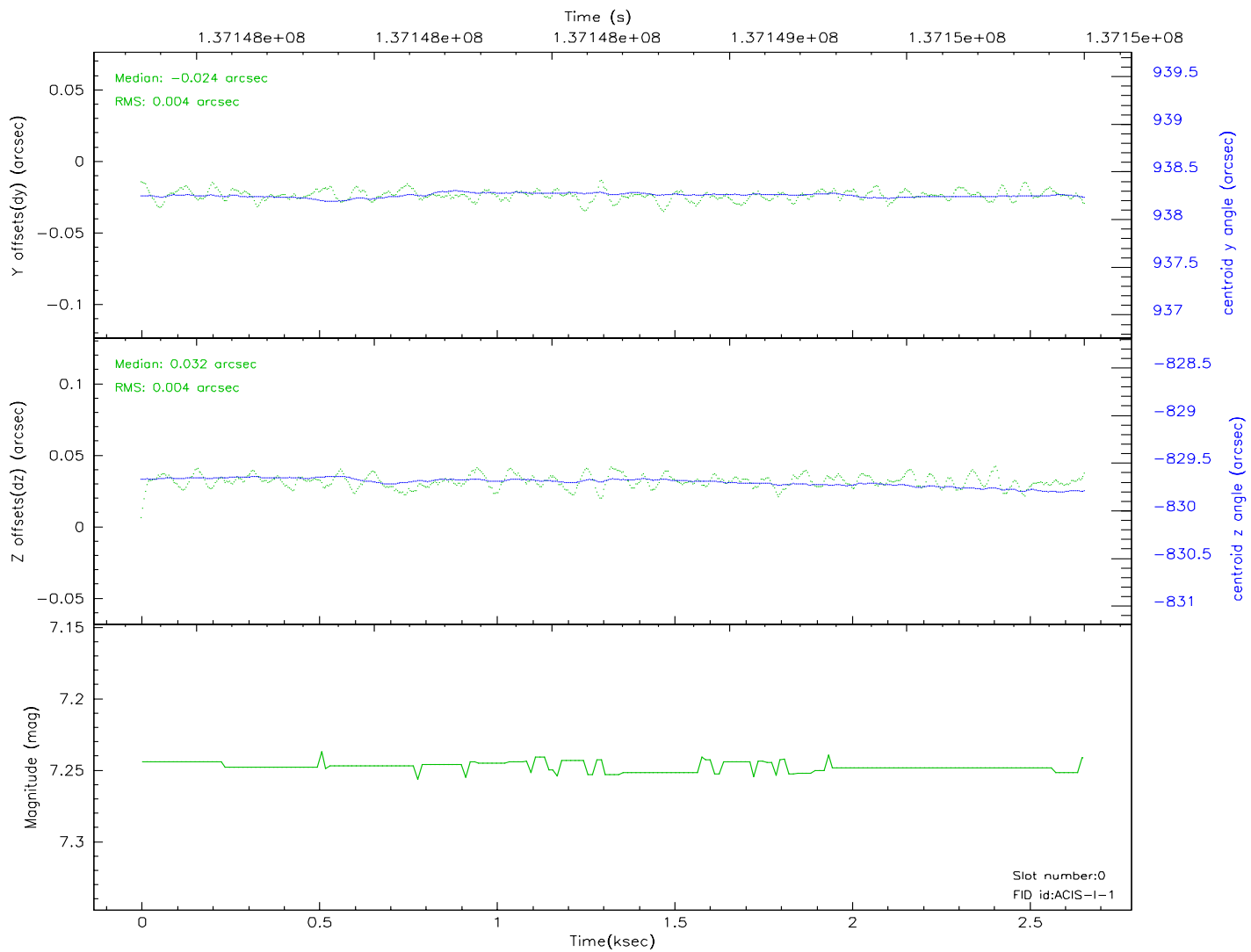
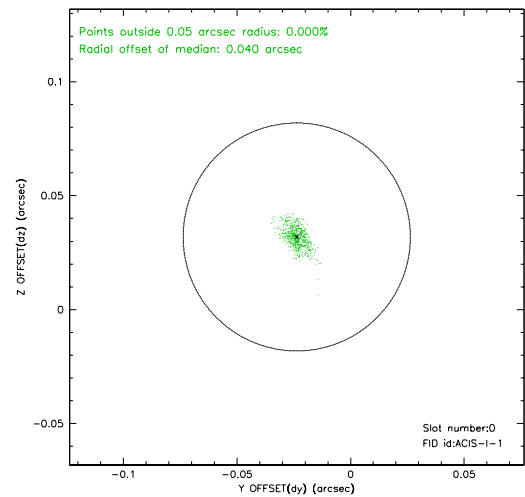
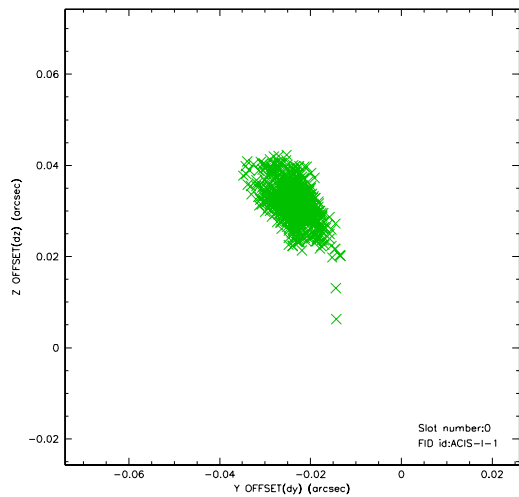


## 2.4.5 Slot 7

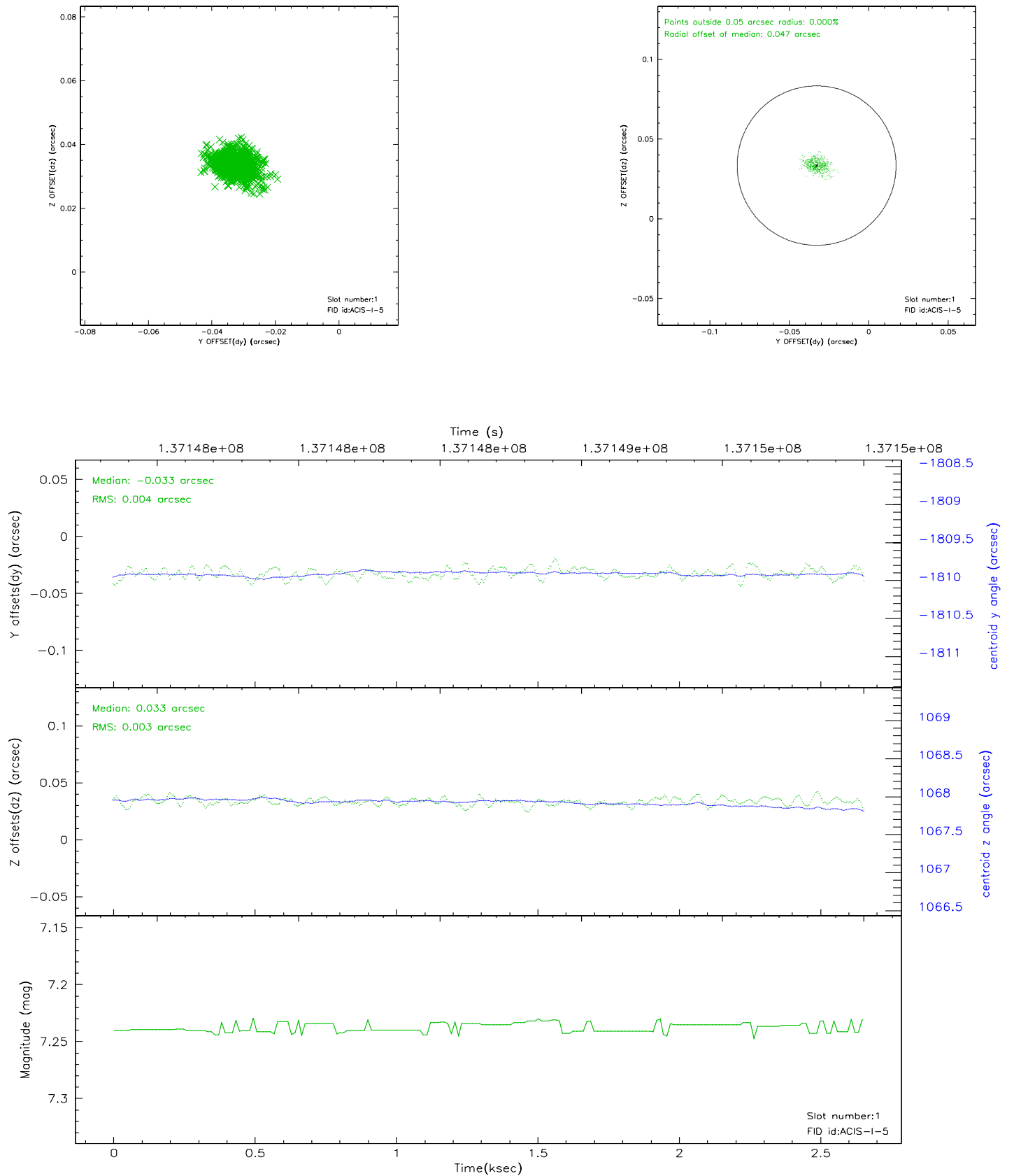


## 2.5 FID Slots

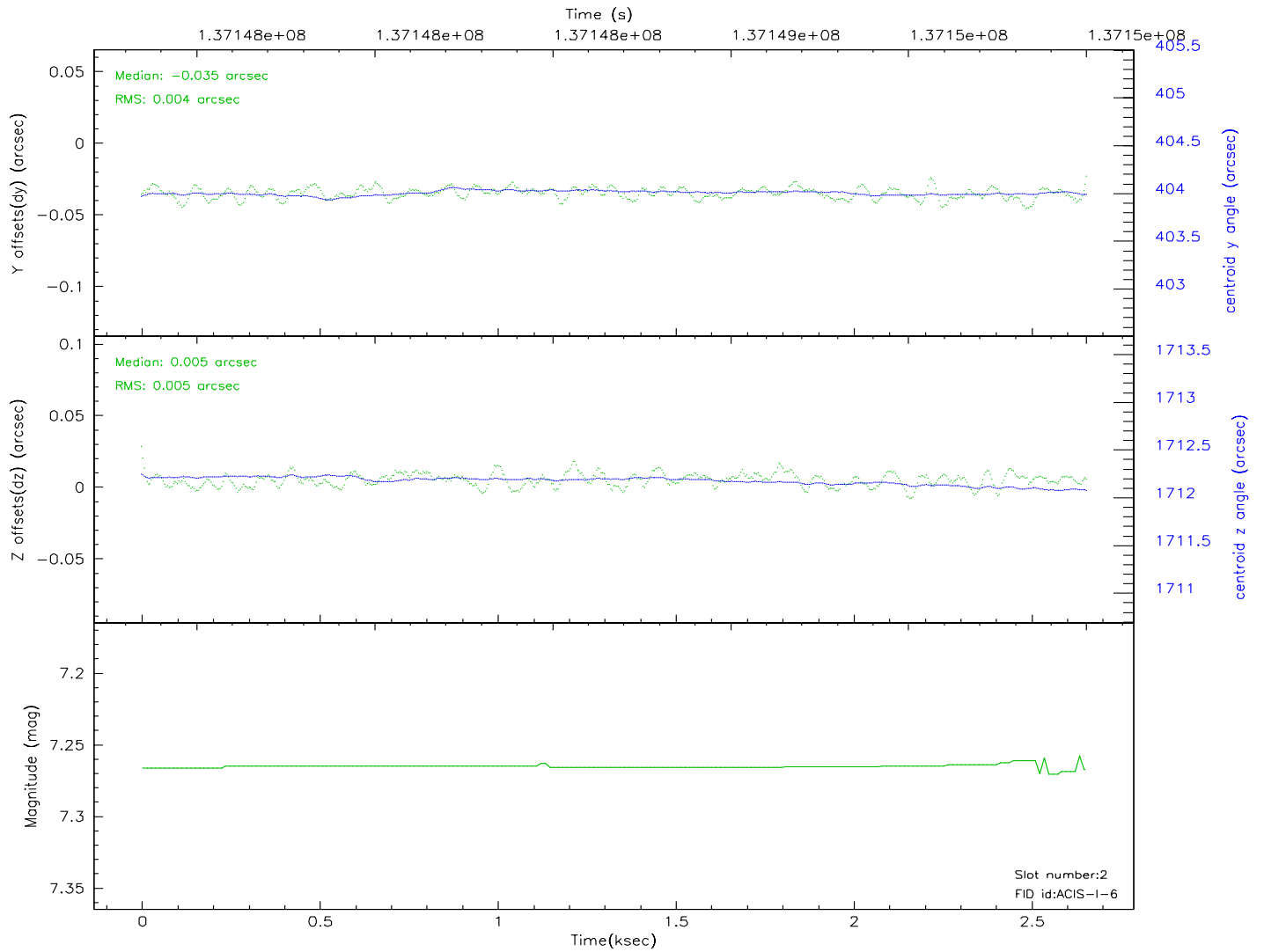
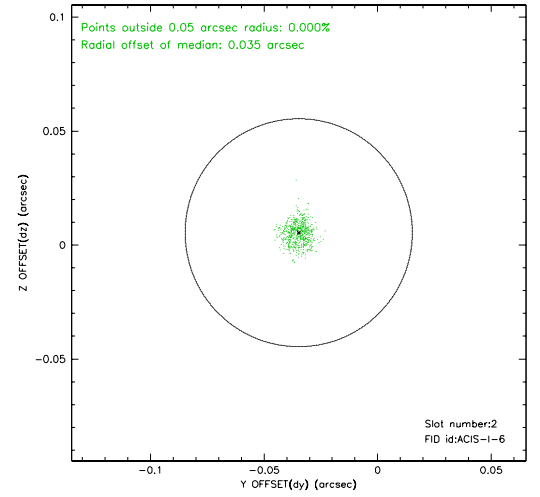
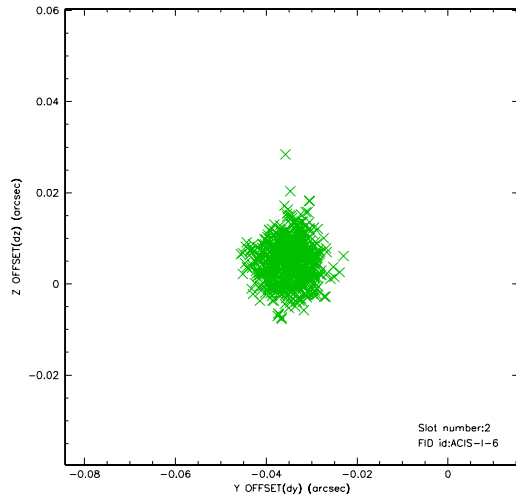
### 2.5.1 Slot 0



## 2.5.2 Slot 1



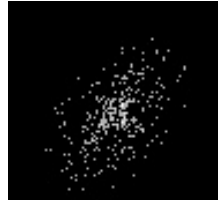
### 2.5.3 Slot 2





### 3 Point Sources

7.06 arcmin



# A Summary

## A.1 Status

V&V Scientist	Jen Lauer
V&V Date (YYYY-MM-DD)	2006.09.18
V&V Edition	1
V&V Disposition and Status	OK
V&V Charge Time	2.255

## A.2 Comments

The guide star in slot 3 was only tracked for 50% of the observation and is therefore excluded from the aspect solution calculations. The aspect solution is not expected to be degraded by the loss of one star.