

V&V Reference Report

L2 ASCDS Version : 7.6.8

Observation 3232 - L2 Version 001
Chandra X-Ray Center

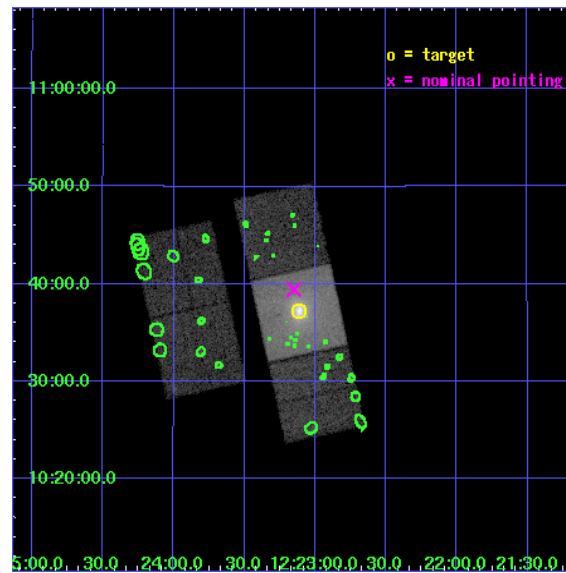
L2 Processing Date : Jul 20 2006

Contents

1	Front	2
2	OBI	3
2.1	OBI	3
2.1.1	Images	3
2.1.2	Bias	3
2.1.3	Parameters	4
2.1.4	Events	4
2.2	Compared Parameters	5
2.3	Aspect	6
2.4	Star Slots	9
2.4.1	Slot 3	9
2.4.2	Slot 4	10
2.4.3	Slot 5	11
2.4.4	Slot 6	12
2.4.5	Slot 7	13
2.5	FID Slots	14
2.5.1	Slot 0	14
2.5.2	Slot 1	15
2.5.3	Slot 2	16
3	Point Sources	17
A	Summary	18
A.1	Status	18
A.2	Comments	18

1 Front

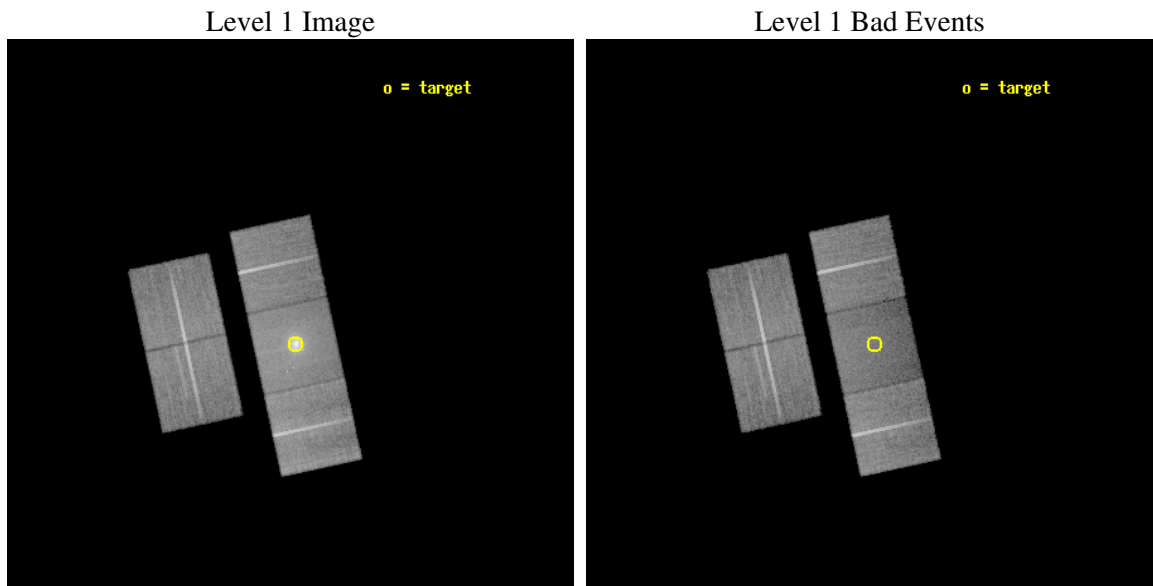
seq_num	800232
obs_id	3232
title	REHEATING IN COOLING FLOWS
observer	Professor Trevor Ponman
object	NGC 4325 GROUP
dtcycle	0
cycle	P
ra_targ	185.777917
dec_targ	10.621194
ra_nom	185.78772006531
dec_nom	10.657290858324
roll_nom	77.7794968332
revision	2
ontime	30482.176980704
livetime	30083.904897799
ontime2	30485.317961037
ontime3	30488.458961159
ontime6	30482.176980823
ontime7	30482.176980704
ontime8	30488.458961129
l2events	179507



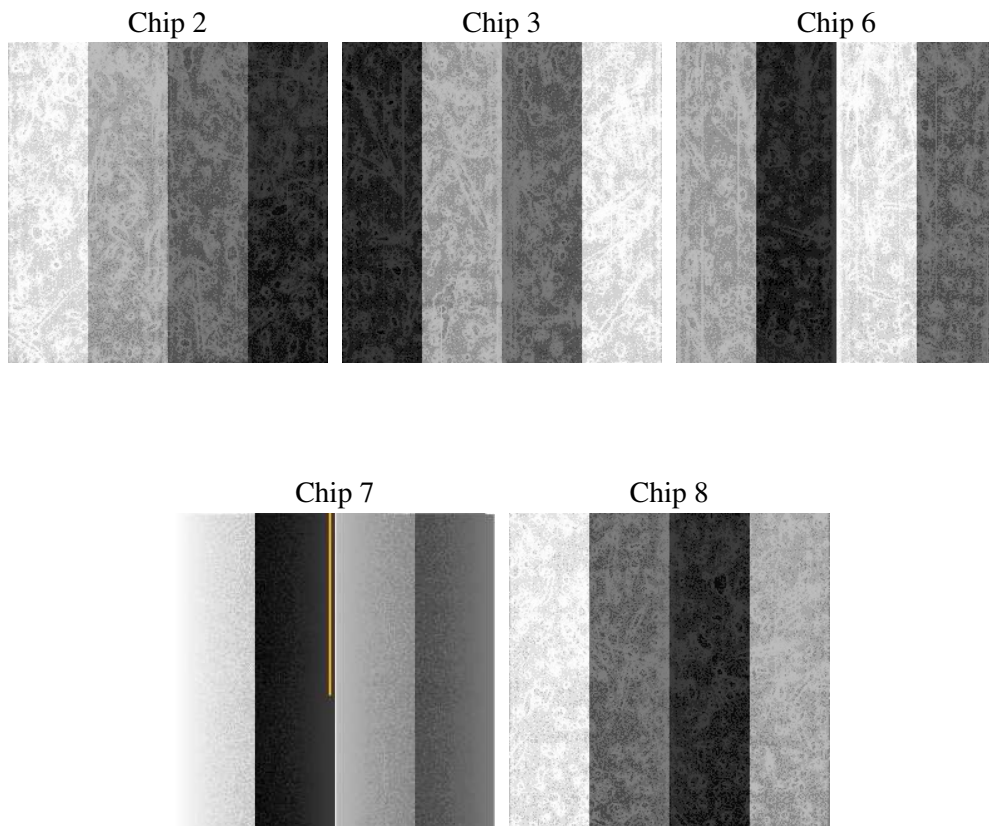
2 OBI

2.1 OBI

2.1.1 Images



2.1.2 Bias



2.1.3 Parameters

obi_num	0
ascdsver	7.6.8
caldbver	3.2.2
date	2006-07-20T17:45:32
revision	2

sched_exp_time	30390.000000
ontime	30489.773639828
ontime2	30492.914600253
ontime3	30496.055600375
ontime6	30489.773620039
ontime7	30489.773639828
ontime8	30496.055600345
l1events	951678

2.1.4 Events

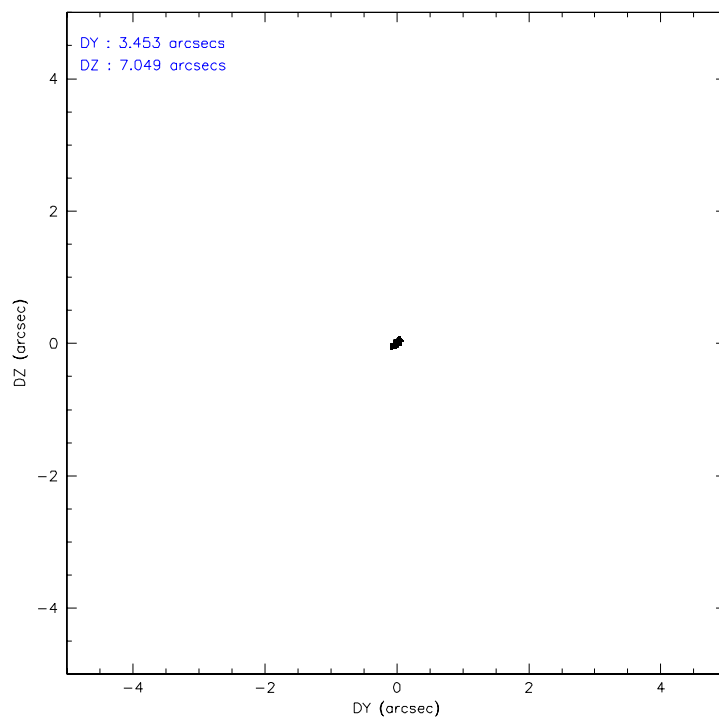
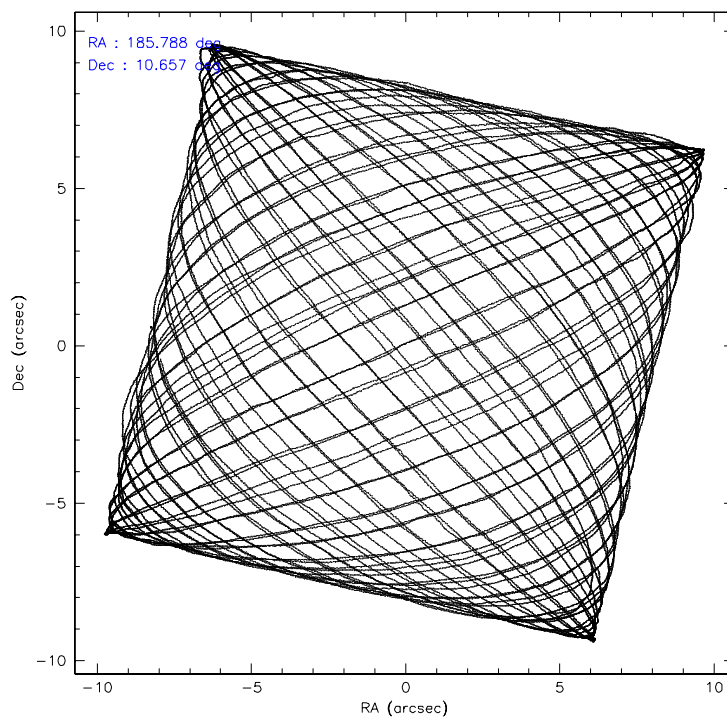
	ccd 2	ccd 3	ccd 6	ccd 7	ccd 8
level 1 events	169576	167201	171849	228370	214682
rejected events	153780	151553	153748	106028	168040
rejected %	90%	90%	89%	46%	78%

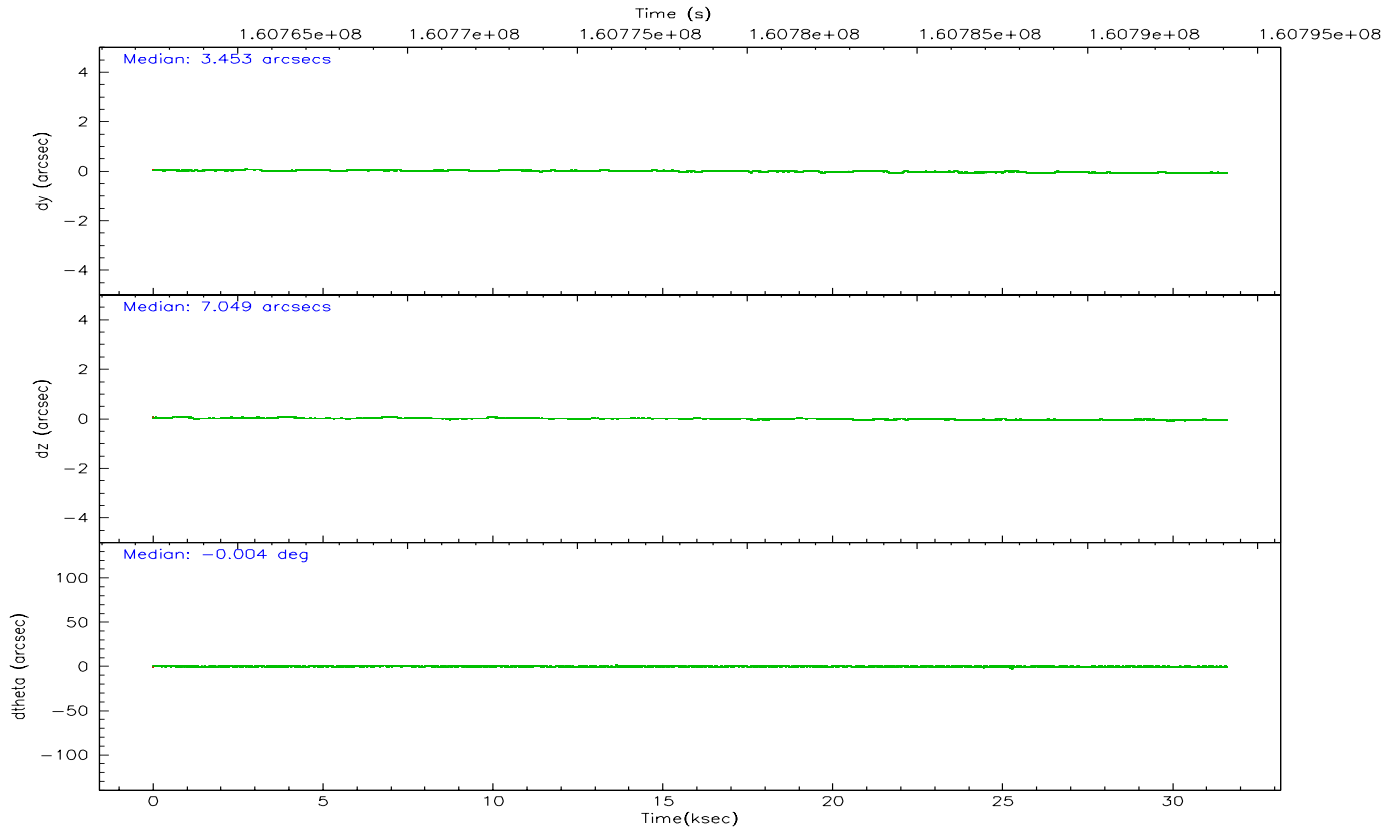
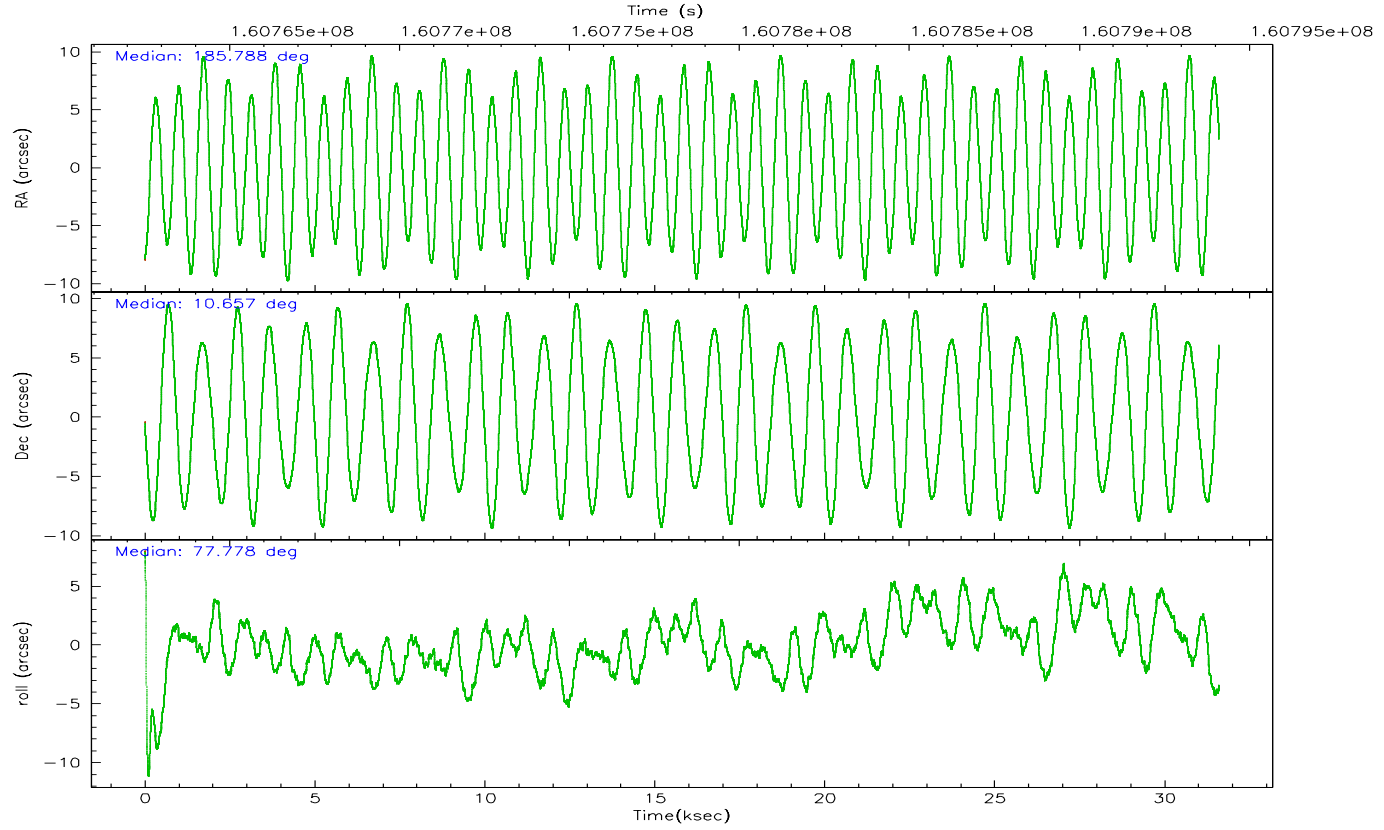
	ccd 2	ccd 3	ccd 6	ccd 7	ccd 8
grade 0 events	5738	5647	6882	19852	14565
	3%	3%	4%	8%	6%
grade 1 events	73	85	69	114	143
	0%	0%	0%	0%	0%
grade 2 events	3564	3131	3715	31815	10063
	2%	1%	2%	13%	4%
grade 3 events	1846	1883	2005	9907	5106
	1%	1%	1%	4%	2%
grade 4 events	1798	1840	1910	9594	4671
	1%	1%	1%	4%	2%
grade 5 events	5224	6243	6423	14364	9136
	3%	3%	3%	6%	4%
grade 6 events	2857	3152	3595	51226	12270
	1%	1%	2%	22%	5%
grade 7 events	148476	145220	147250	91498	158728
	87%	86%	85%	40%	73%

2.2 Compared Parameters

Parameter	Planned	Actual	Parameter	Planned	Actual
Instrument	ACIS	ACIS	Obspar format version number	6	6
Detector	ACIS-23678	ACIS-23678	Obspar file type	PREDICTED	ACTUAL
Grating	NONE	NONE	Obspar update status	NONE	UPDATED
Data mode	VFAINT	VFAINT	On-chip summing requested	N	N
Observation mode	POINTING	POINTING	Subarray requested	NONE	NONE
Pointing RA	185.796536	185.7877200653079	Alternating exposures requested	N	N
Pointing Dec	10.631514	10.65729085832382	Primary exposure time	0.000000	3.1
Pointing Roll	77.621227	77.77949683320047			
SIM focus pos (mm)	-0.684267	-0.6828225247311905			
SIM defocus (mm)	0	0.001444936568705701			
SIM translation stage pos (mm)	-190.132523	-190.1400660498719			
SIM translation stage offset (mm)	0	0.00754346686406393			
Observation start time	160763724.184000	160762250.79273			
Observation start date	2003-02-04T16:34:20	2003-02-04T16:10:50			
Observation end time	160794114.184000	160794458.34408			
Observation end date	2003-02-05T01:00:50	2003-02-05T01:07:38			
Read mode	TIMED	TIMED			

2.3 Aspect



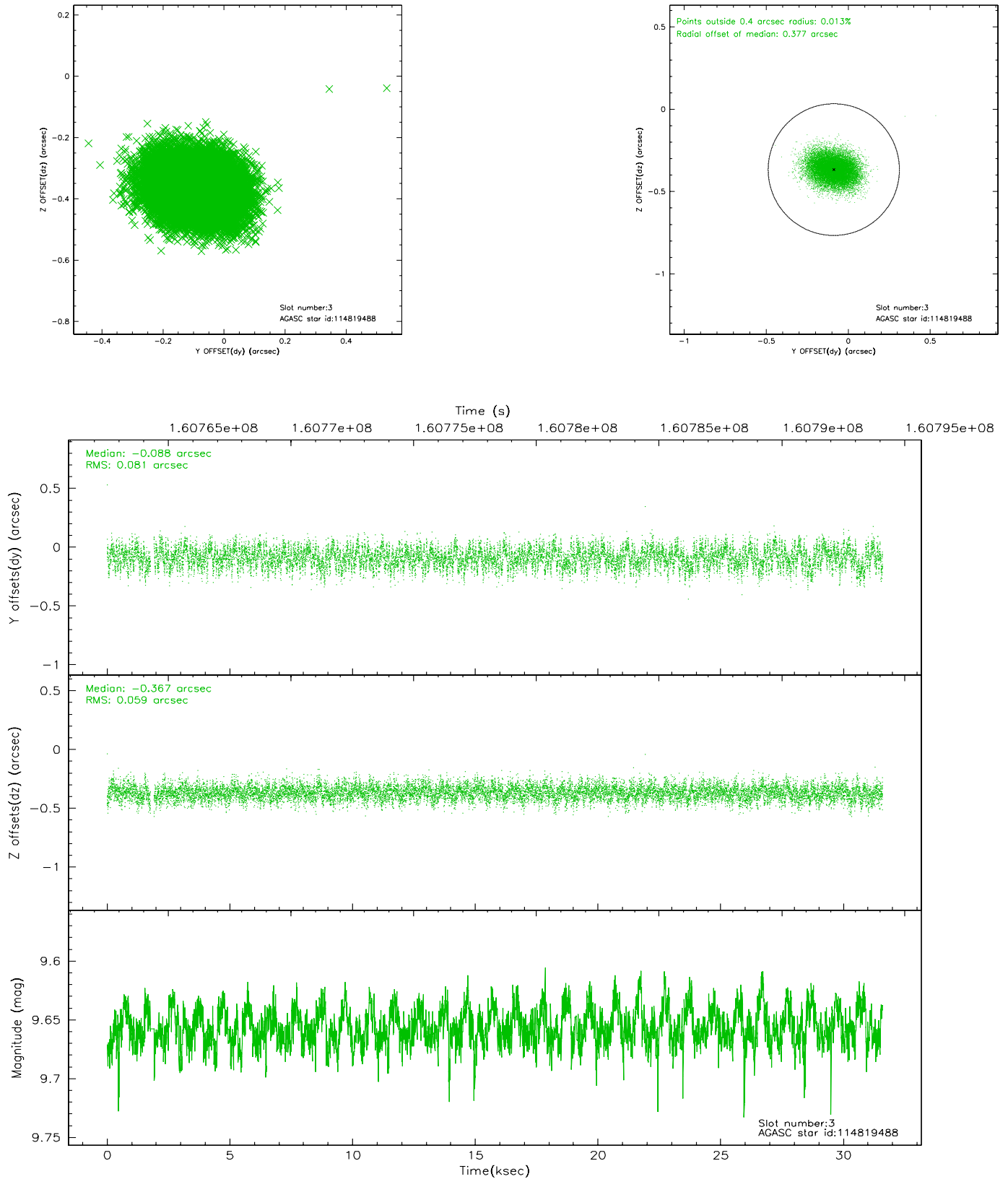


Slot Statistics

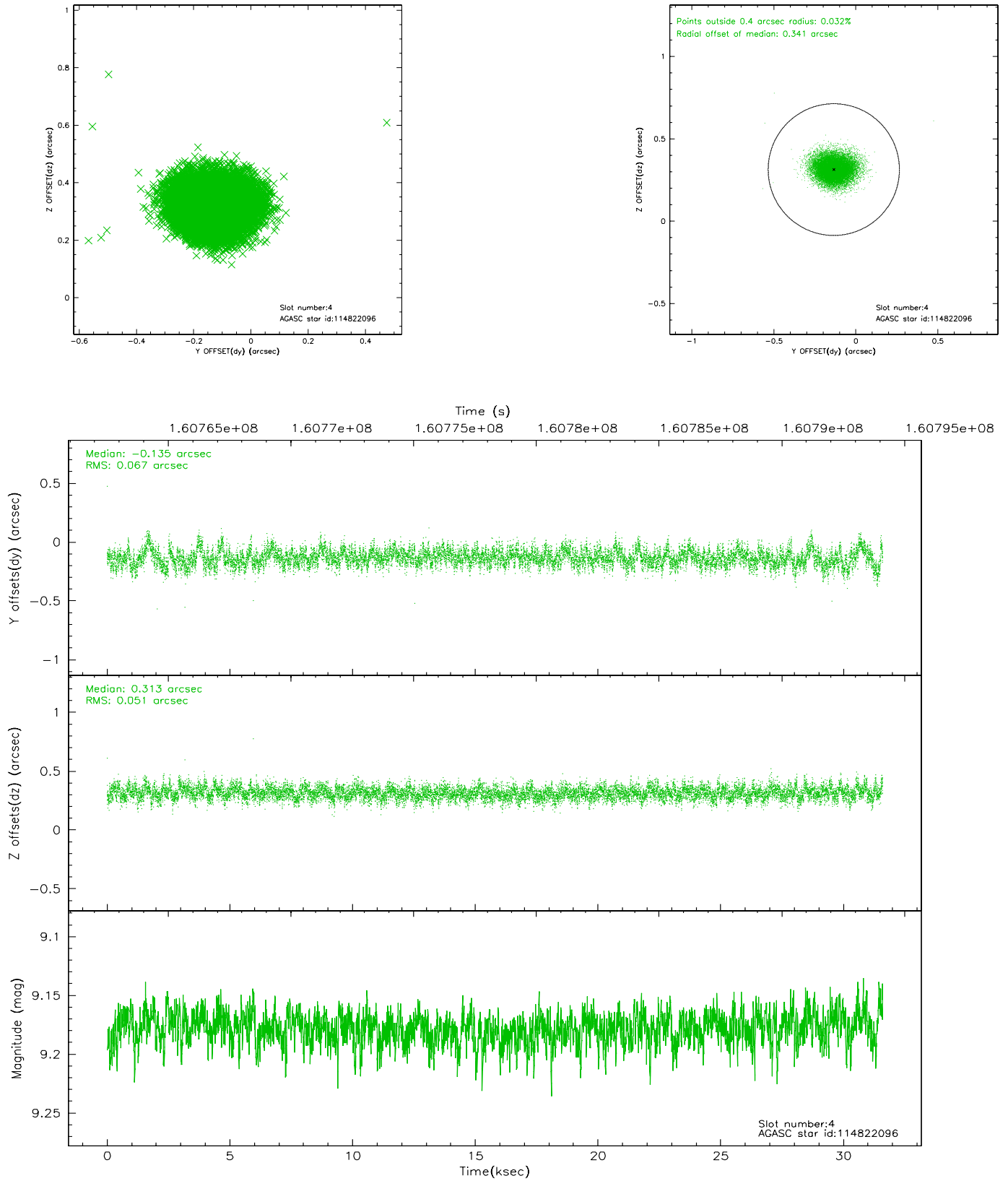
slot	status	id	mag	n_pts	med_dy	med_dz	dr1	dr2	ra	dec	mean_y	mean_z
0	FID	ACIS-S-2	7.12	7708	-0.002	0.032	0.006	0.011	0.000000	0.000000	-756.10	-1728.18
1	FID	ACIS-S-4	7.20	7708	-0.044	-0.007	0.005	0.009	0.000000	0.000000	2157.10	180.20
2	FID	ACIS-S-5	7.24	7708	0.015	-0.015	0.006	0.011	0.000000	0.000000	-1808.85	173.93
3	GUIDE	114819488	9.66	15334	-0.088	-0.367	0.107	0.171	185.439323	11.182195	1667.02	1657.45
4	GUIDE	114822096	9.18	15409	-0.135	0.313	0.088	0.146	186.117793	11.168056	2130.94	-693.21
5	GUIDE	114823704	9.59	15398	0.108	0.252	0.109	0.195	186.069404	10.291925	-985.77	-1205.43
6	GUIDE	114823840	9.22	15407	0.150	-0.211	0.087	0.144	186.195871	10.717151	605.13	-1313.02
7	GUIDE	114957648	9.57	15397	-0.028	0.010	0.096	0.155	186.459555	10.641928	542.26	-2281.84

2.4 Star Slots

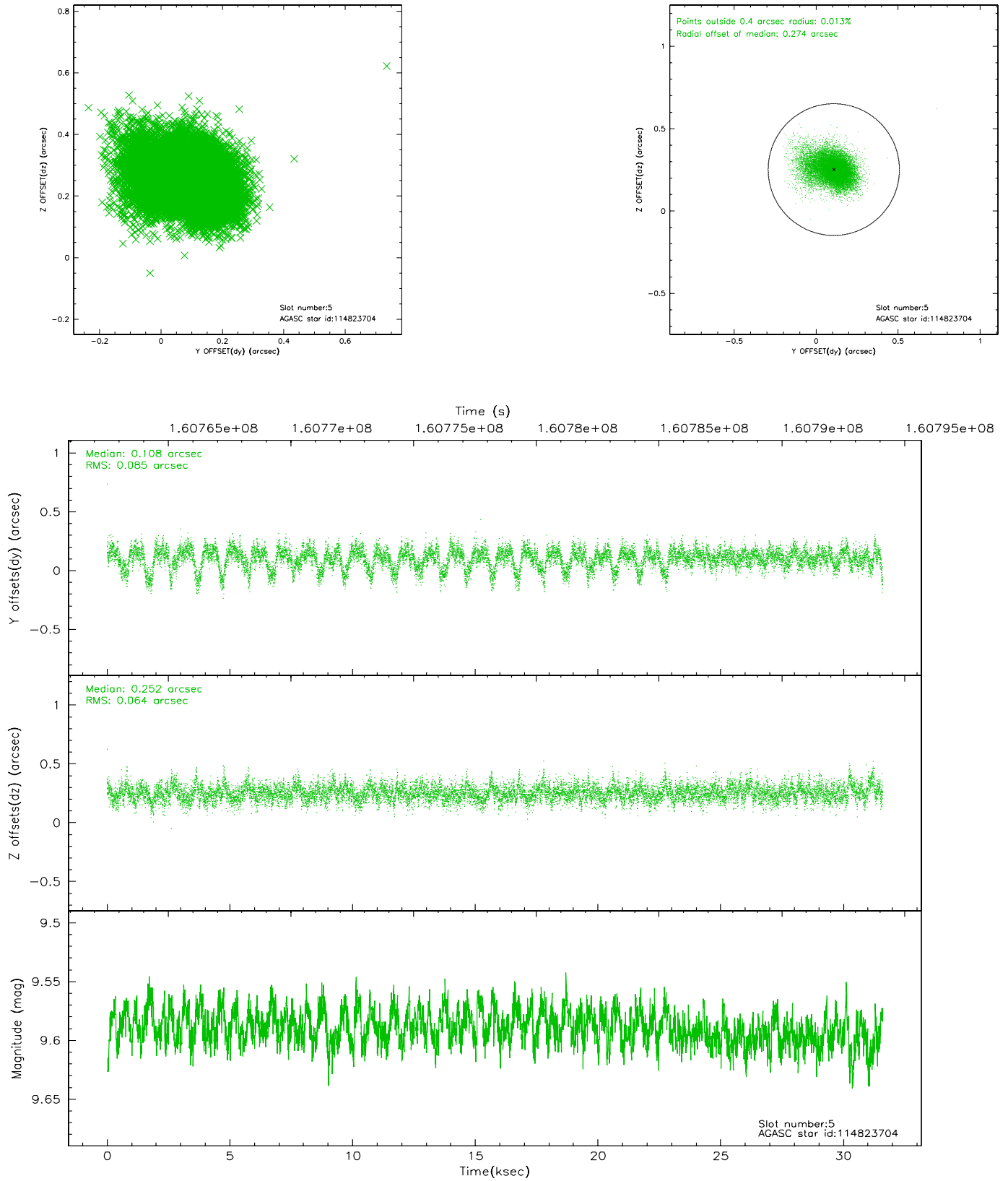
2.4.1 Slot 3



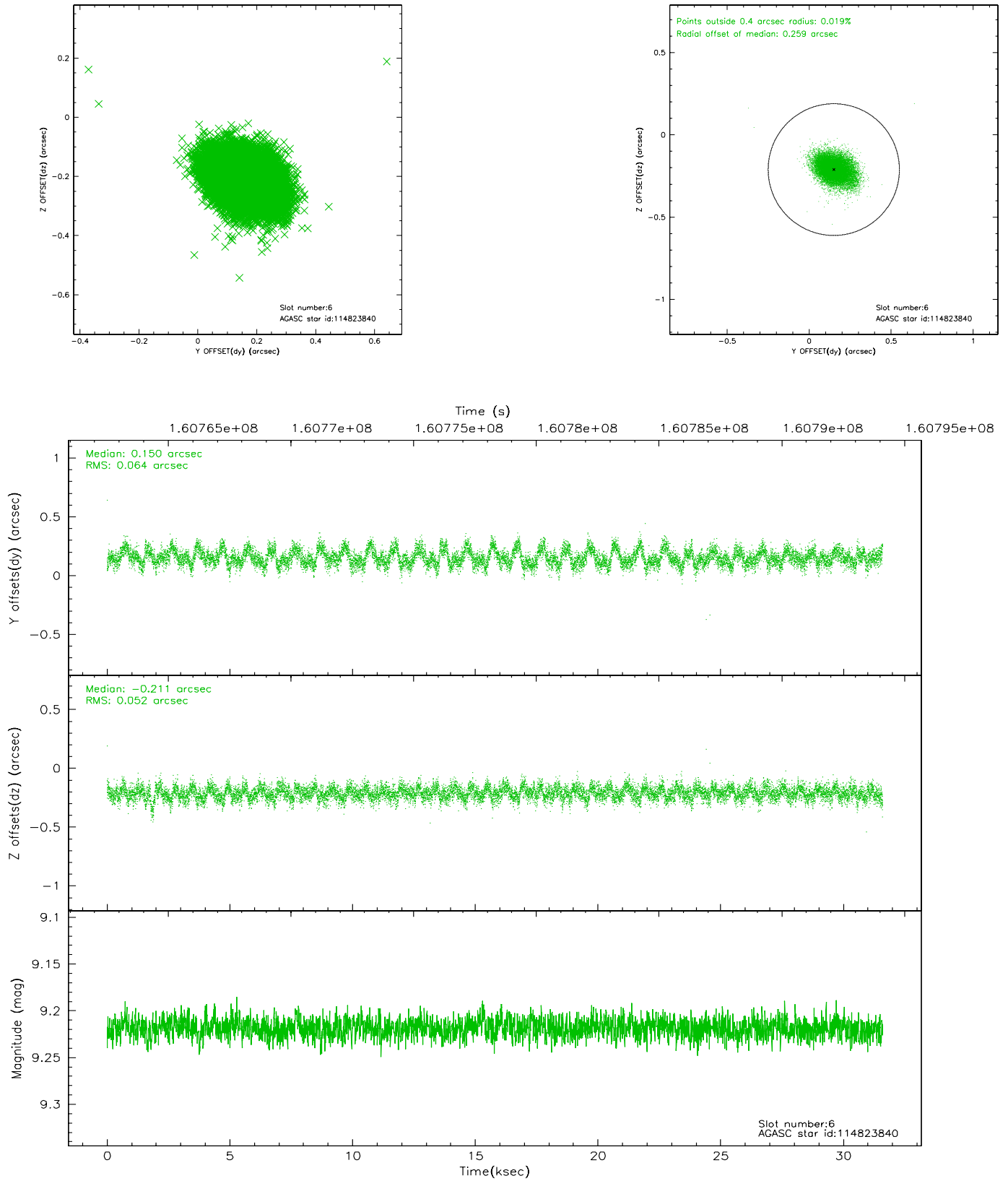
2.4.2 Slot 4



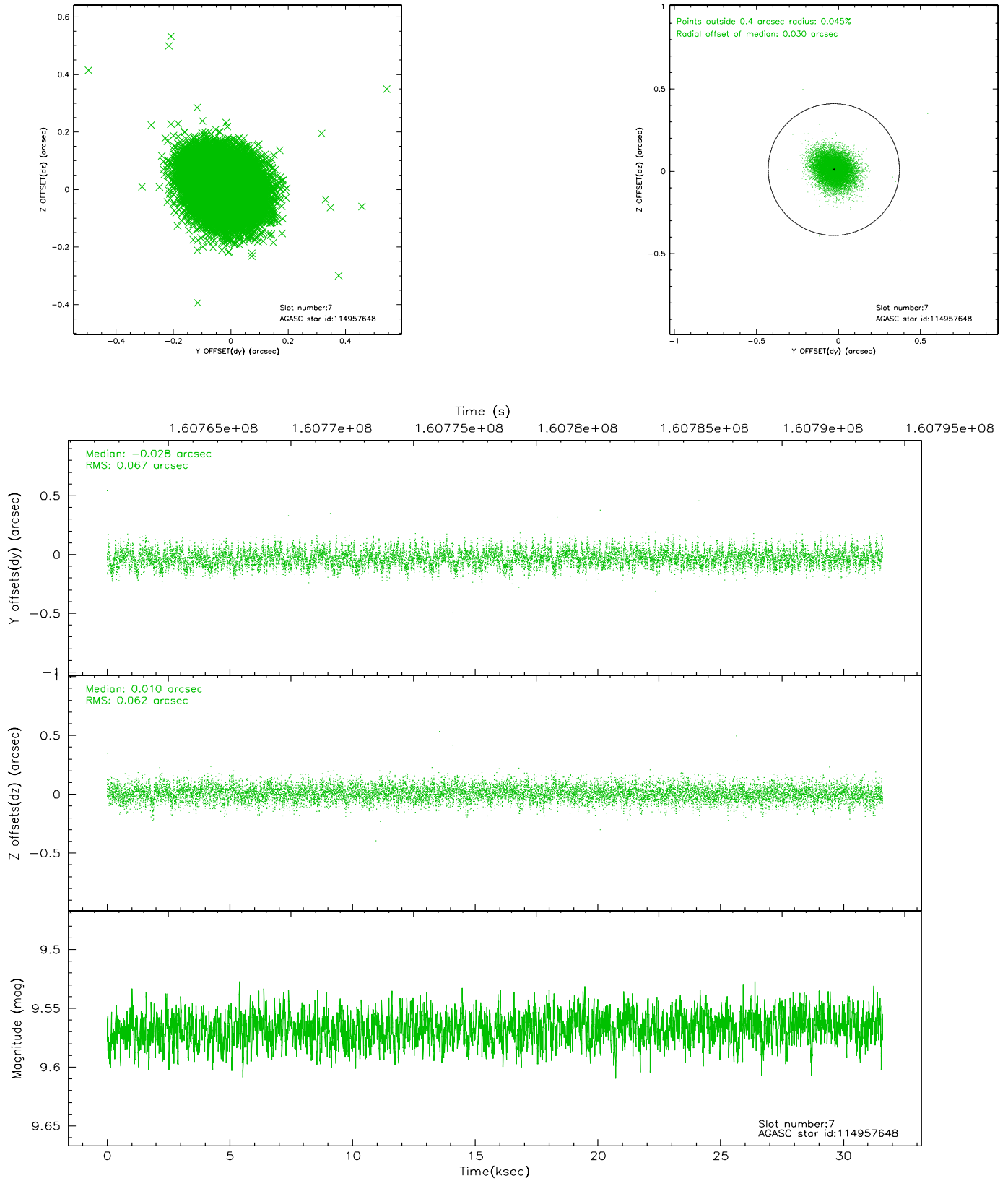
2.4.3 Slot 5



2.4.4 Slot 6

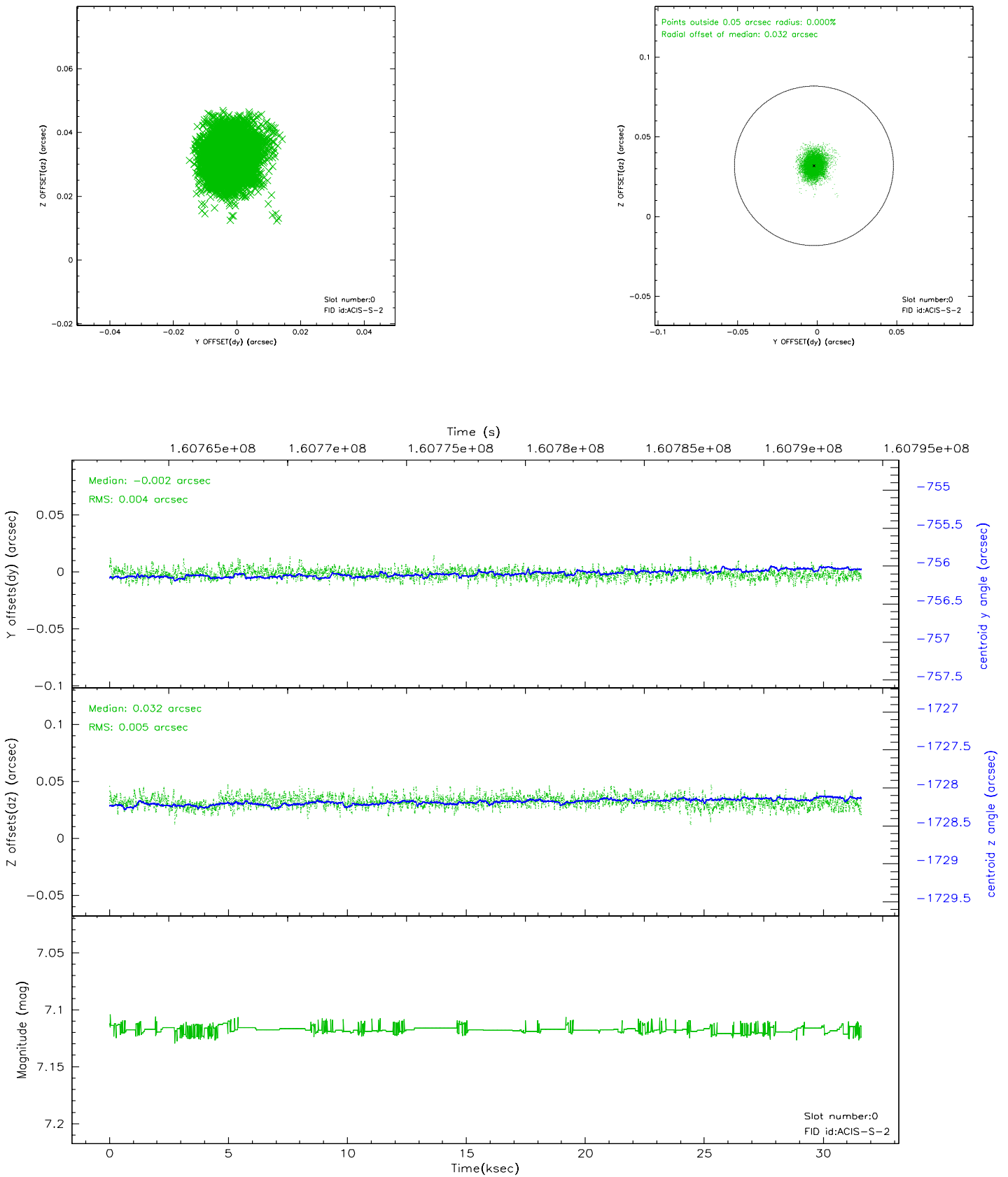


2.4.5 Slot 7

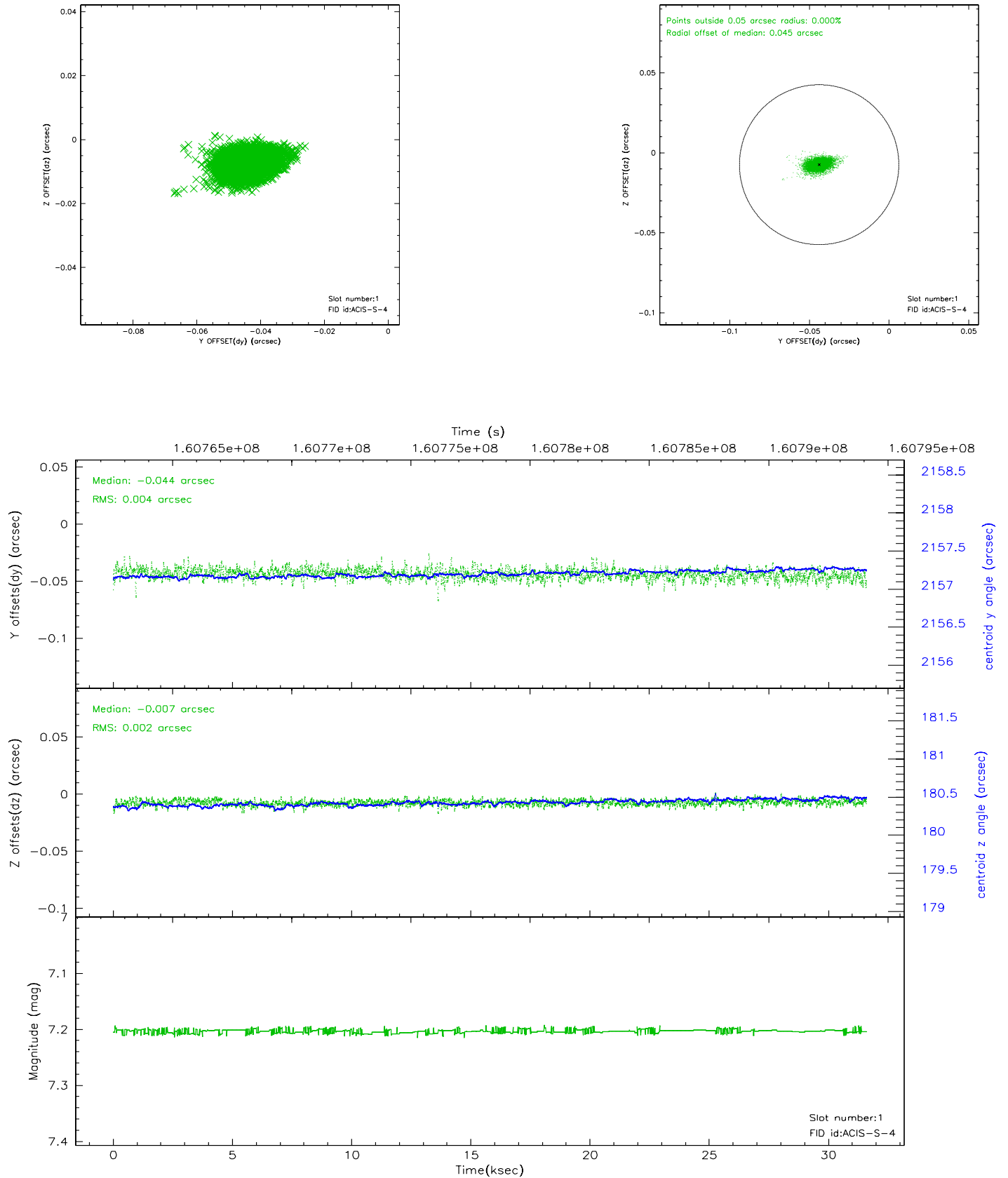


2.5 FID Slots

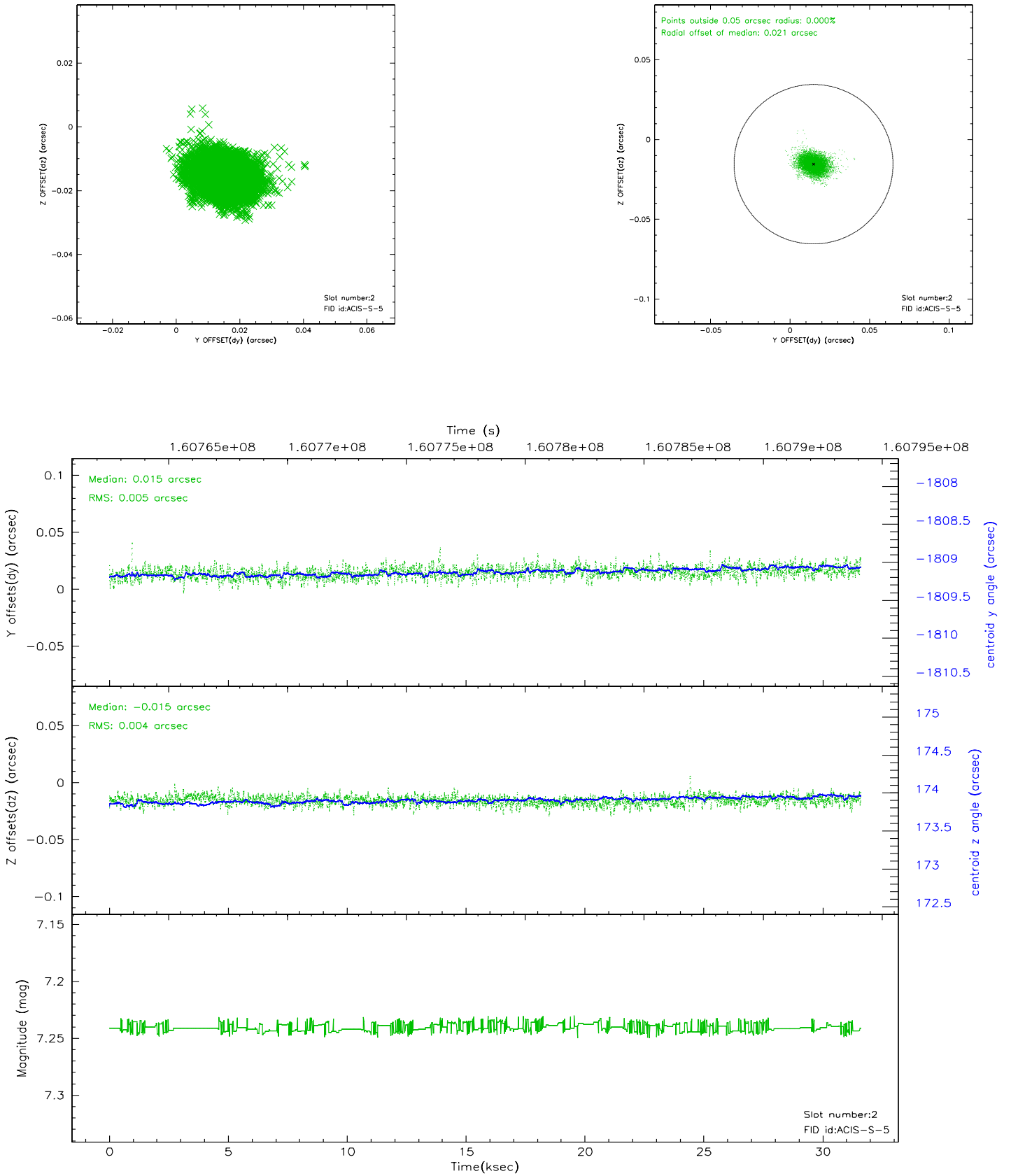
2.5.1 Slot 0



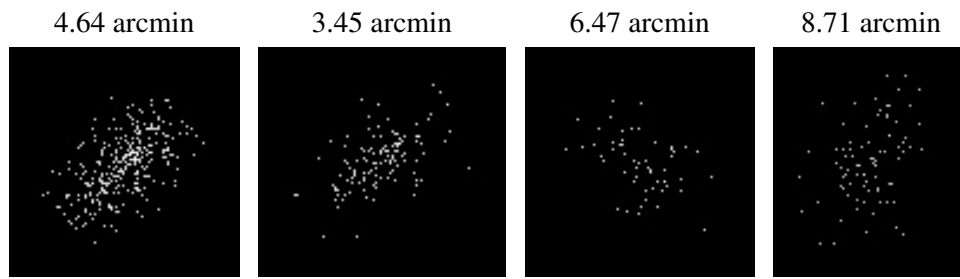
2.5.2 Slot 1



2.5.3 Slot 2



3 Point Sources



A Summary

A.1 Status

V&V Scientist	Beth Sundheim
V&V Date (YYYY-MM-DD)	2006.07.20
V&V Edition	1
V&V Disposition and Status	OK
V&V Charge Time	30.485

A.2 Comments