

V&V Reference Report

L2 ASCDS Version : 8.4.5

Observation 3142 - L2 Version 3
Chandra X-Ray Center

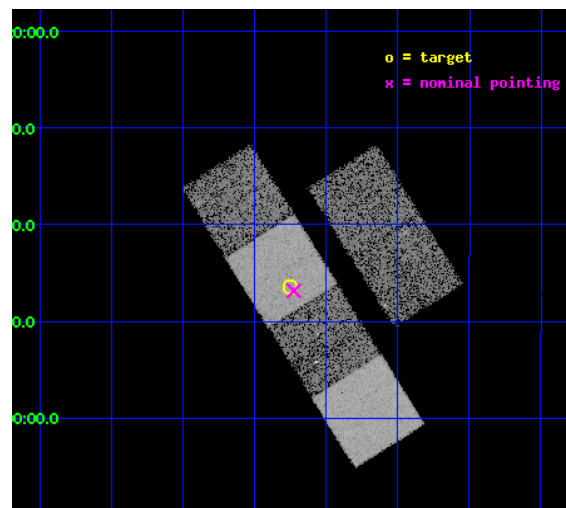
L2 Processing Date : Oct 9 2012

Contents

1	Front	2
2	OBI	3
2.1	OBI	3
2.1.1	Images	3
2.1.2	Bias	3
2.1.3	Parameters	4
2.1.4	Events	4
2.2	Compared Parameters	5
2.3	Aspect	6
2.4	Star Slots	9
2.4.1	Slot 3	9
2.4.2	Slot 4	10
2.4.3	Slot 5	11
2.4.4	Slot 6	12
2.4.5	Slot 7	13
2.5	FID Slots	14
2.5.1	Slot 0	14
2.5.2	Slot 1	15
2.5.3	Slot 2	16
A	Summary	17
A.1	Status	17
A.2	Comments	17

1 Front

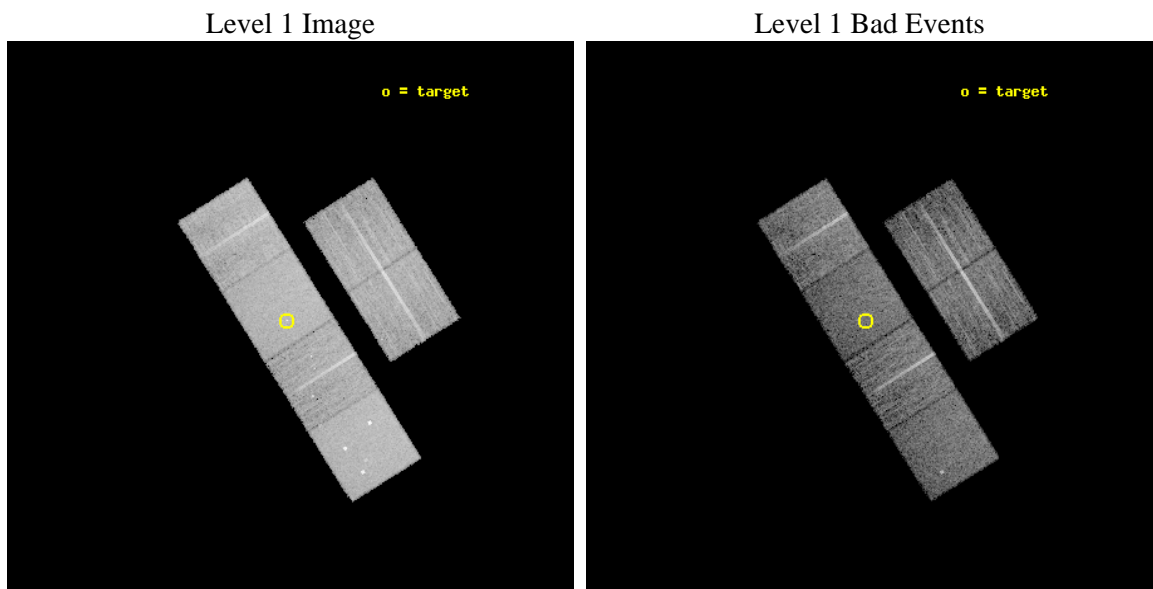
seq_num	700581	Sequence number
obs_id	3142	Observation id
title	PROBING THE X-RAY EMISSION OF HIGH LUMINOSITY EMISSION LINE GALAXIES: QUASAR-2s AND THE STARBURST-AGN CONNECTION	Proposal title
observer	Prof. Paolo Coppi	Principal investigator
object	QUEST 1533-0346	Source name
dtcycle	0	
cycle	P	events from which exps? Prim/Second/Both
ra_targ	233.438333	Observer's specified target RA [deg]
dec_targ	-3.7735	Observer's specified target Dec [deg]
ra_nom	233.43182243952	Nominal RA [deg]
dec_nom	-3.7806304739021	Nominal Dec [deg]
roll_nom	237.87534328901	Nominal Roll [deg]
revision	3	Processing version of data
ontime	9961.5999628901	Sum of GTIs [s]
livetime	9835.4601860047	Livetime [s]
ontime2	9961.5999628901	Sum of GTIs [s]
ontime3	9961.5999628901	Sum of GTIs [s]
ontime5	9961.5999628901	Sum of GTIs [s]
ontime6	9961.5999628901	Sum of GTIs [s]
ontime7	9961.5999628901	Sum of GTIs [s]
ontime8	9961.5999628901	Sum of GTIs [s]
l2events	99418	Number of level 2 events



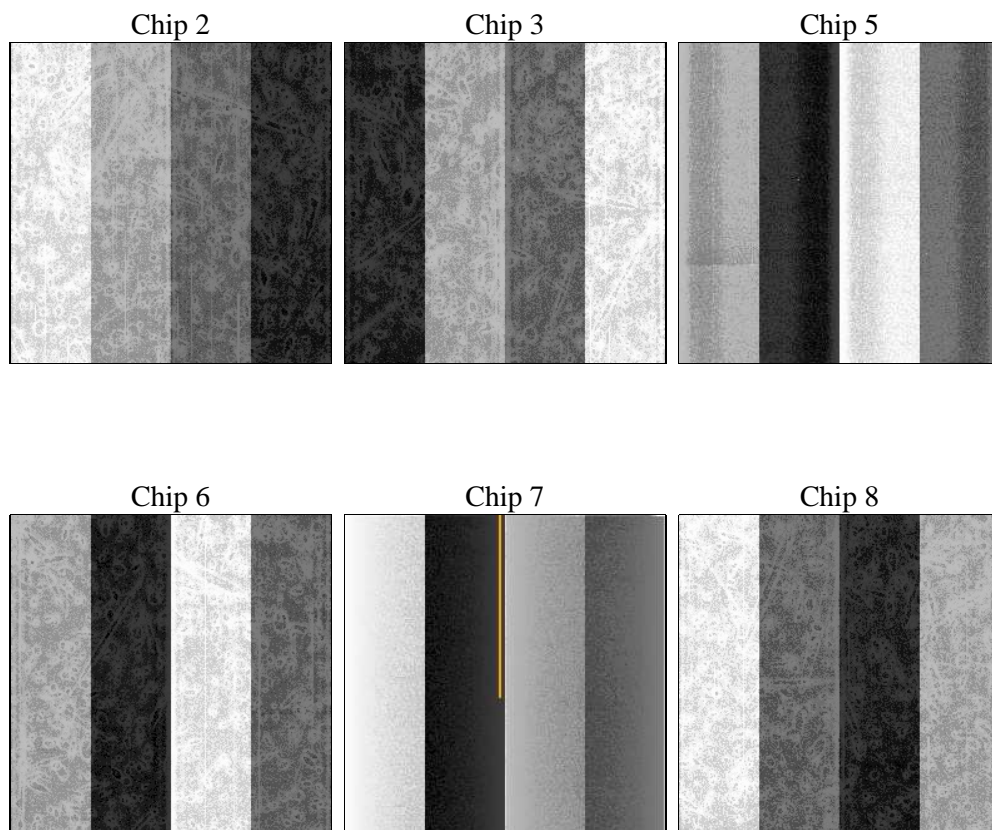
2 OBI

2.1 OBI

2.1.1 Images



2.1.2 Bias



2.1.3 Parameters

obi_num	1	Obi number	sched_exp_time	10000.000000	[s] Scheduled observation exposure time
ascdsver	8.4.5	Processing system revision	ontime	9961.5999628901	Sum of GTIs [s]
caldbver	4.5.2	 	ontime2	9961.5999628901	Sum of GTIs [s]
date	2012-10-09T04:21:32	Date and time of file creation	ontime3	9961.5999628901	Sum of GTIs [s]
revision	3	Processing version of data	ontime5	9961.5999628901	Sum of GTIs [s]
			ontime6	9961.5999628901	Sum of GTIs [s]
			ontime7	9961.5999628901	Sum of GTIs [s]
			ontime8	9961.5999628901	Sum of GTIs [s]
			l1events	449099	Number of level 1 events

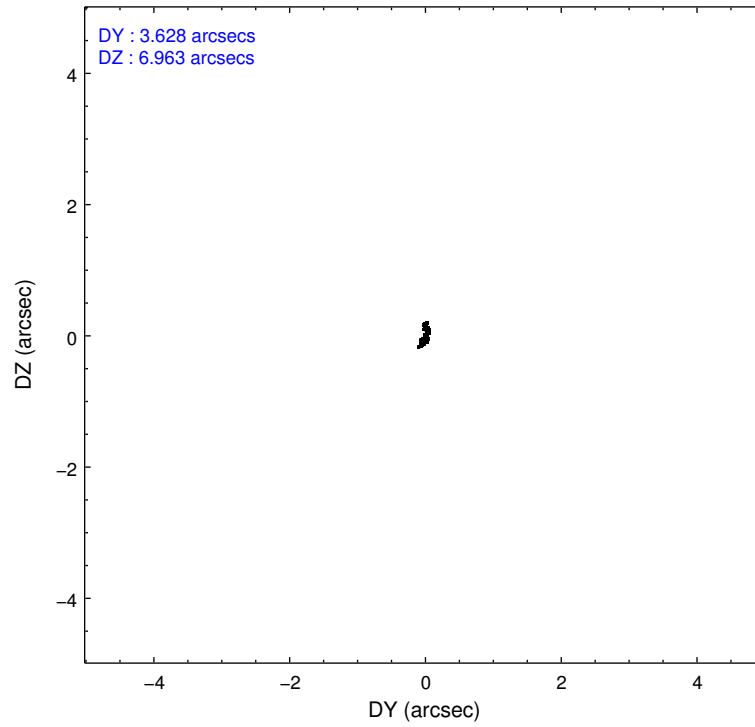
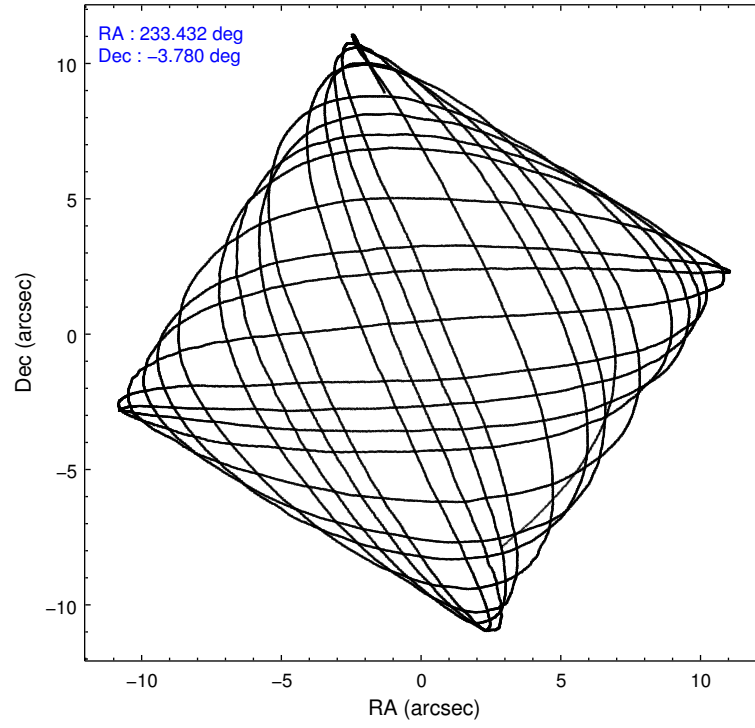
2.1.4 Events

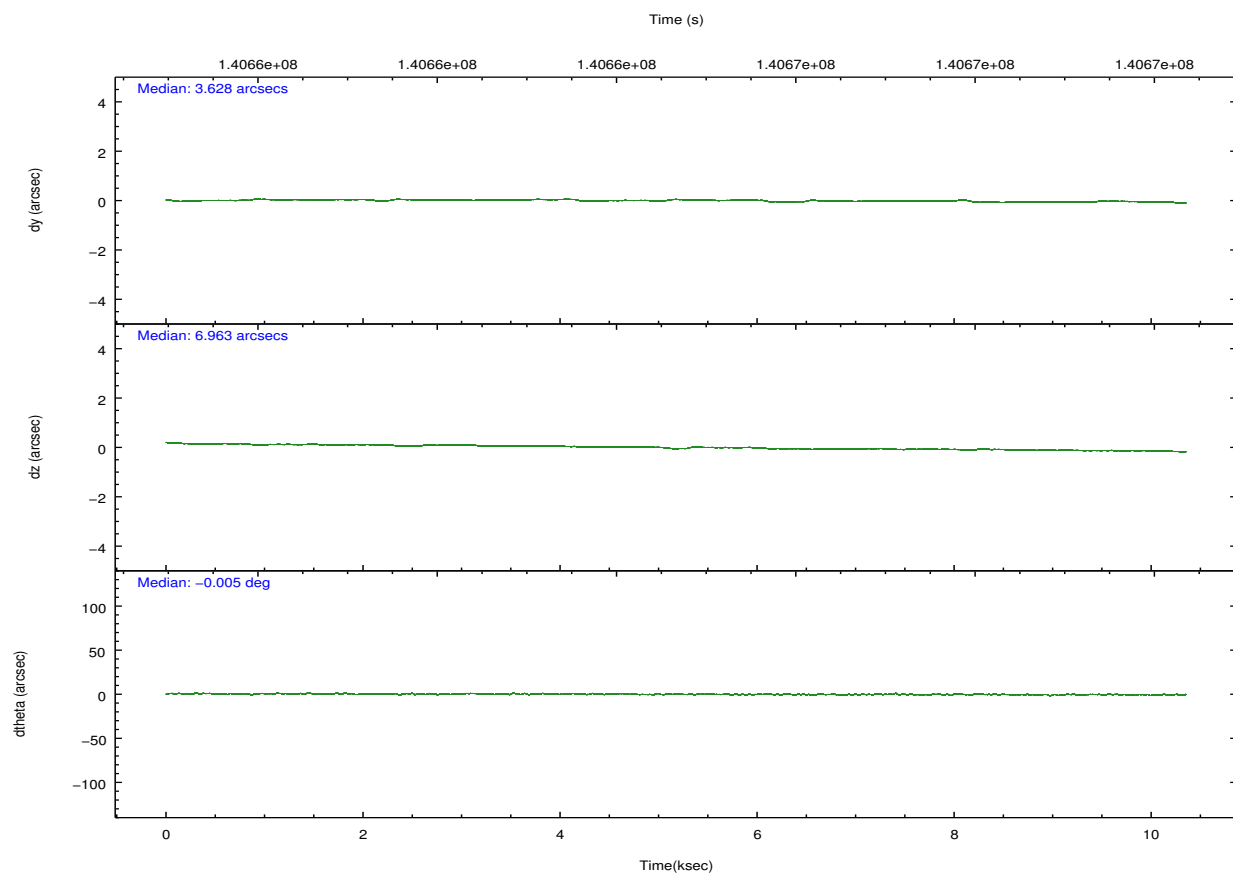
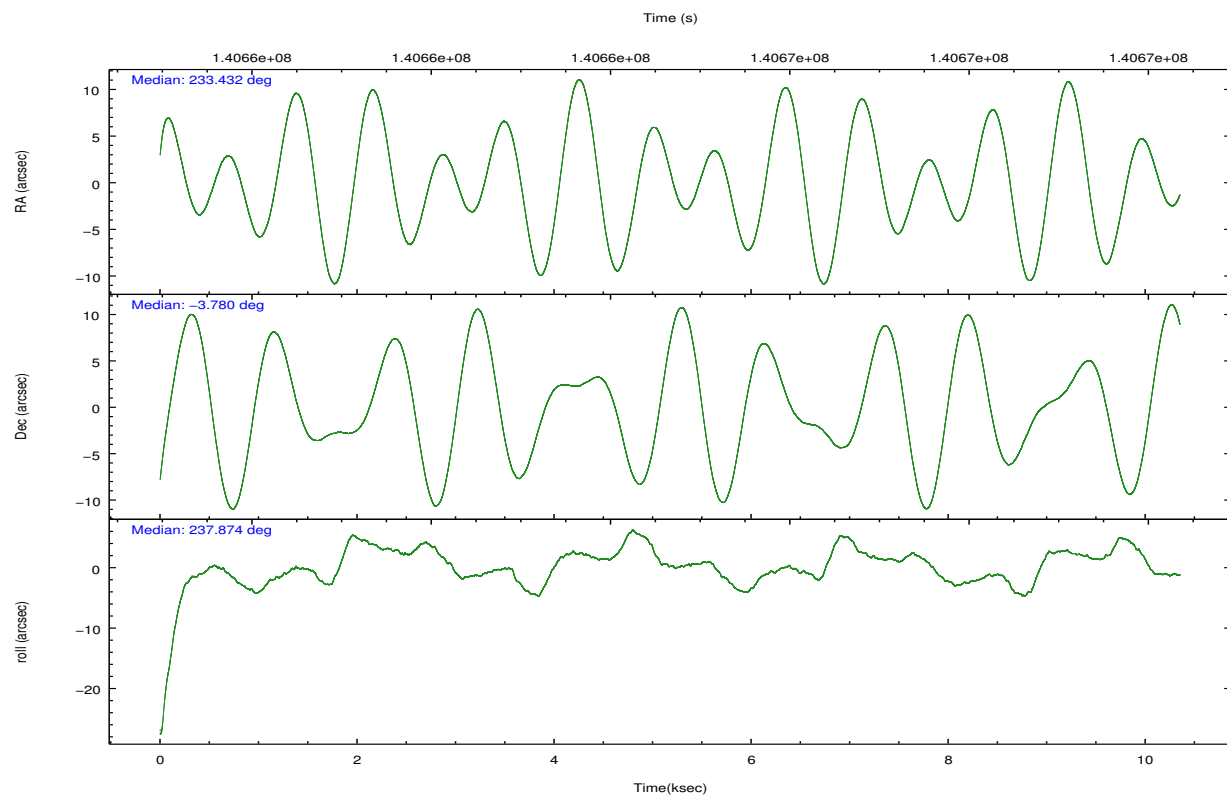
	ccd 2	ccd 3	ccd 5	ccd 6	ccd 7	ccd 8		ccd 2	ccd 3	ccd 5	ccd 6	ccd 7	ccd 8
level 1 events	66275	62181	92741	64908	82797	80197	grade 0 events	3161	3018	6190	3624	3231	5000
rejected events	58807	55056	49499	56787	48474	64319		4%	4%	6%	5%	3%	6%
rejected %	88%	88%	53%	87%	58%	80%	grade 1 events	26	24	286	32	90	47
								0%	0%	0%	0%	0%	0%
							grade 2 events	1629	1386	12018	1597	6773	3584
								2%	2%	12%	2%	8%	4%
							grade 3 events	687	732	1871	716	3049	1589
								1%	1%	2%	1%	3%	1%
							grade 4 events	680	671	1701	688	3002	1502
								1%	1%	1%	1%	3%	1%
							grade 5 events	2229	2639	7029	2812	7910	3688
								3%	4%	7%	4%	9%	4%
							grade 6 events	1314	1318	21472	1497	18278	4204
								1%	2%	23%	2%	22%	5%
							grade 7 events	56549	52393	42174	53942	40464	60583
								85%	84%	45%	83%	48%	75%

2.2 Compared Parameters

Parameter	Planned	Actual	Parameter	Planned	Actual
Instrument	ACIS	ACIS	Obspar format version number	7	7
Detector	ACIS-235678	ACIS-235678	Obspar file type	PREDICTED	ACTUAL
Grating	NONE	NONE	Obspar update status	NONE	UPDATED
Data mode	FAINT	FAINT	Number of optional ACIS chips dropped	0	0
Observation mode	POINTING	POINTING	On-chip summing requested	N	N
[deg] Pointing RA	233.432465	233.4318224395171	Subarray requested	NONE	NONE
[deg] Pointing Dec	-3.753439	-3.780630473902107	Alternating exposures requested	N	N
[deg] Pointing Roll	237.718760	237.8753432890069	[s] Primary exposure time	0.000000	3.2
[mm] SIM focus pos	-0.684267	-0.6828225247311905			
[mm] SIM defocus	0	0.001444936568705701			
[mm] SIM translation stage pos	-190.132523	-190.1400660498719			
[mm] SIM translation stage offset	0	0.00754346686406393			
[s] Observation start time (MET)	140659840.184000	140658799.9094			
Observation start date	2002-06-17T00:09:36	2002-06-16T23:53:19			
[s] Observation end time (MET)	140669840.184000	140670766.78489			
Observation end date	2002-06-17T02:56:16	2002-06-17T03:12:46			
Read mode	TIMED	TIMED			

2.3 Aspect



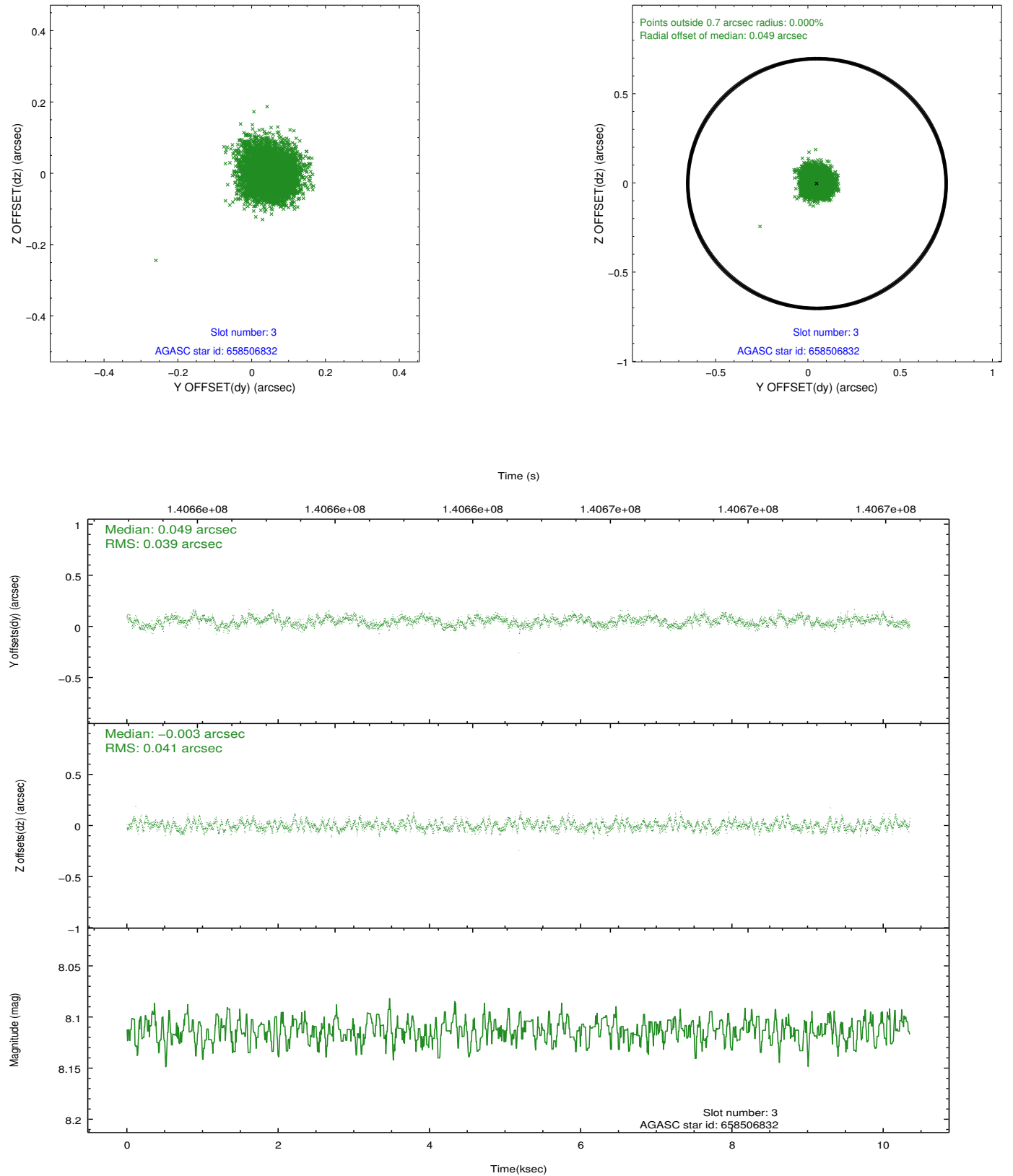


Slot Statistics

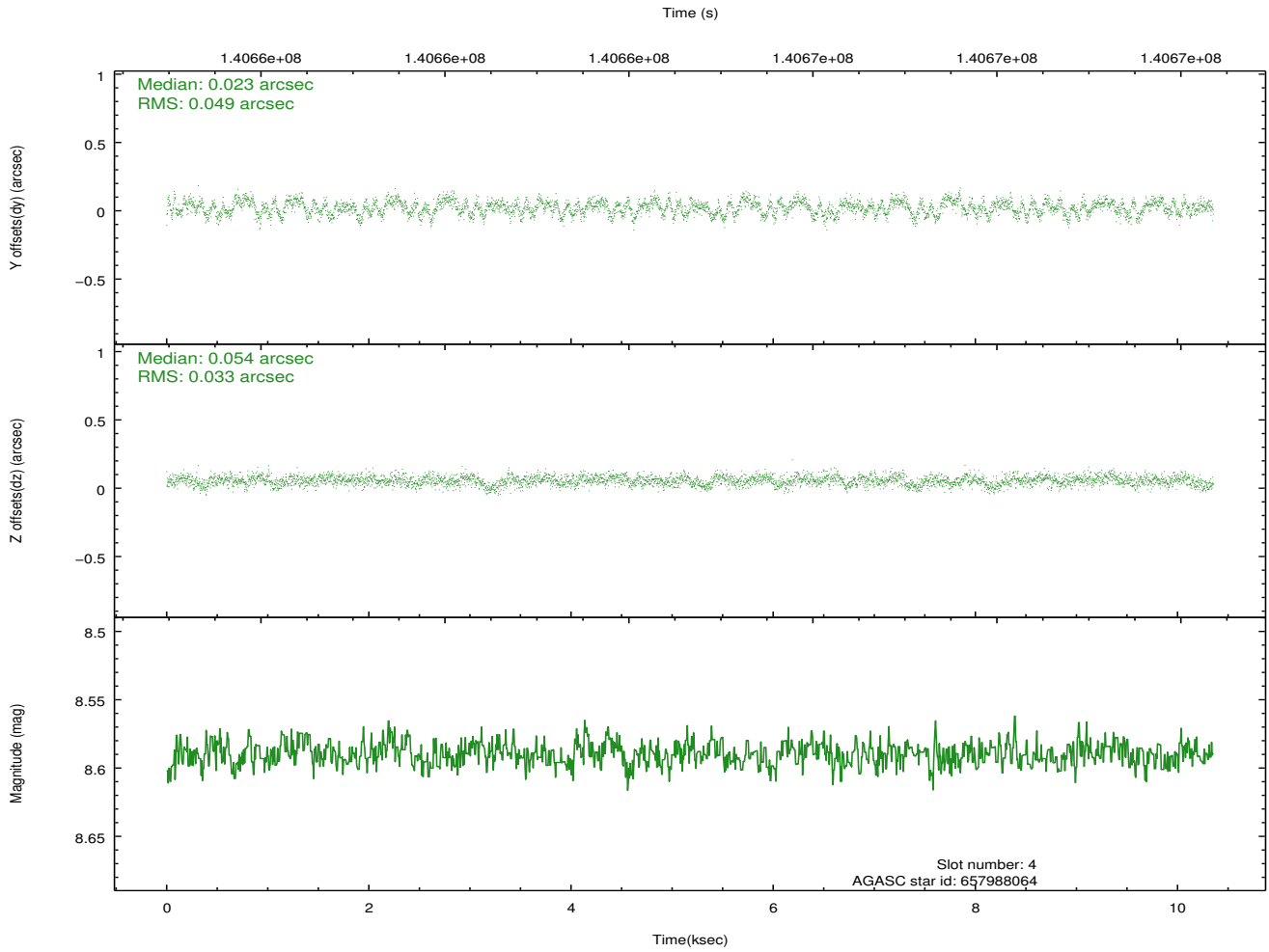
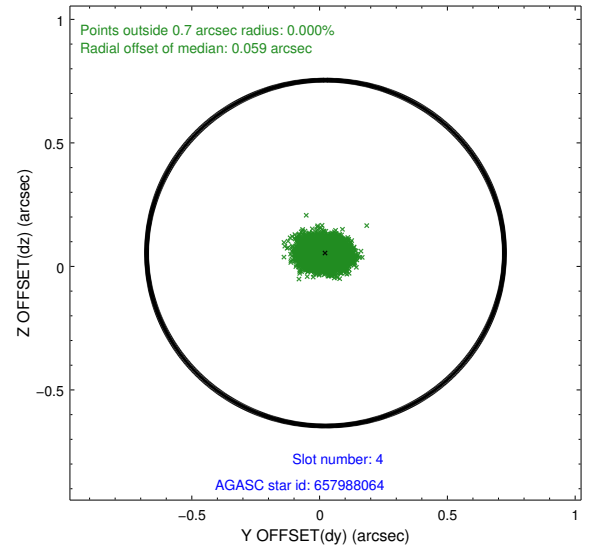
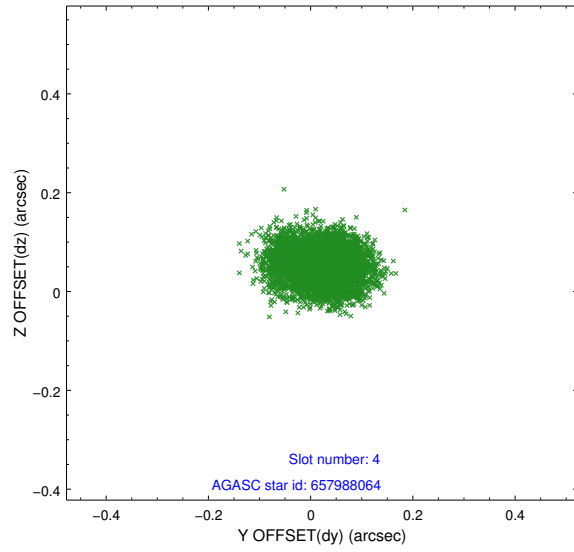
slot	status	id	mag	n_pts	med_dy	med_dz	dr1	dr2	ra	dec	mean_y	mean_z
0	FID	ACIS-S-2	7.11	2525	-0.014	0.006	0.007	0.011	0.000000	0.000000	-756.28	-1728.13
1	FID	ACIS-S-4	7.20	2525	0.003	0.005	0.006	0.010	0.000000	0.000000	2156.77	179.86
2	FID	ACIS-S-5	7.24	2525	-0.021	-0.002	0.007	0.011	0.000000	0.000000	-1808.49	174.06
3	GUIDE	658506832	8.11	5050	0.049	-0.003	0.061	0.096	233.565199	-4.359821	1591.77	1569.55
4	GUIDE	657988064	8.59	5050	0.023	0.054	0.063	0.101	233.924361	-3.487544	-1751.91	984.36
5	GUIDE	657986208	9.11	5047	0.000	-0.015	0.075	0.120	233.173721	-3.464094	-383.63	-1341.50
6	GUIDE	657983664	8.59	5049	-0.027	-0.073	0.055	0.090	233.769945	-3.322472	-1958.52	197.16
7	GUIDE	658510208	9.59	5043	-0.042	0.041	0.102	0.166	232.852613	-4.123136	2237.98	-1048.34

2.4 Star Slots

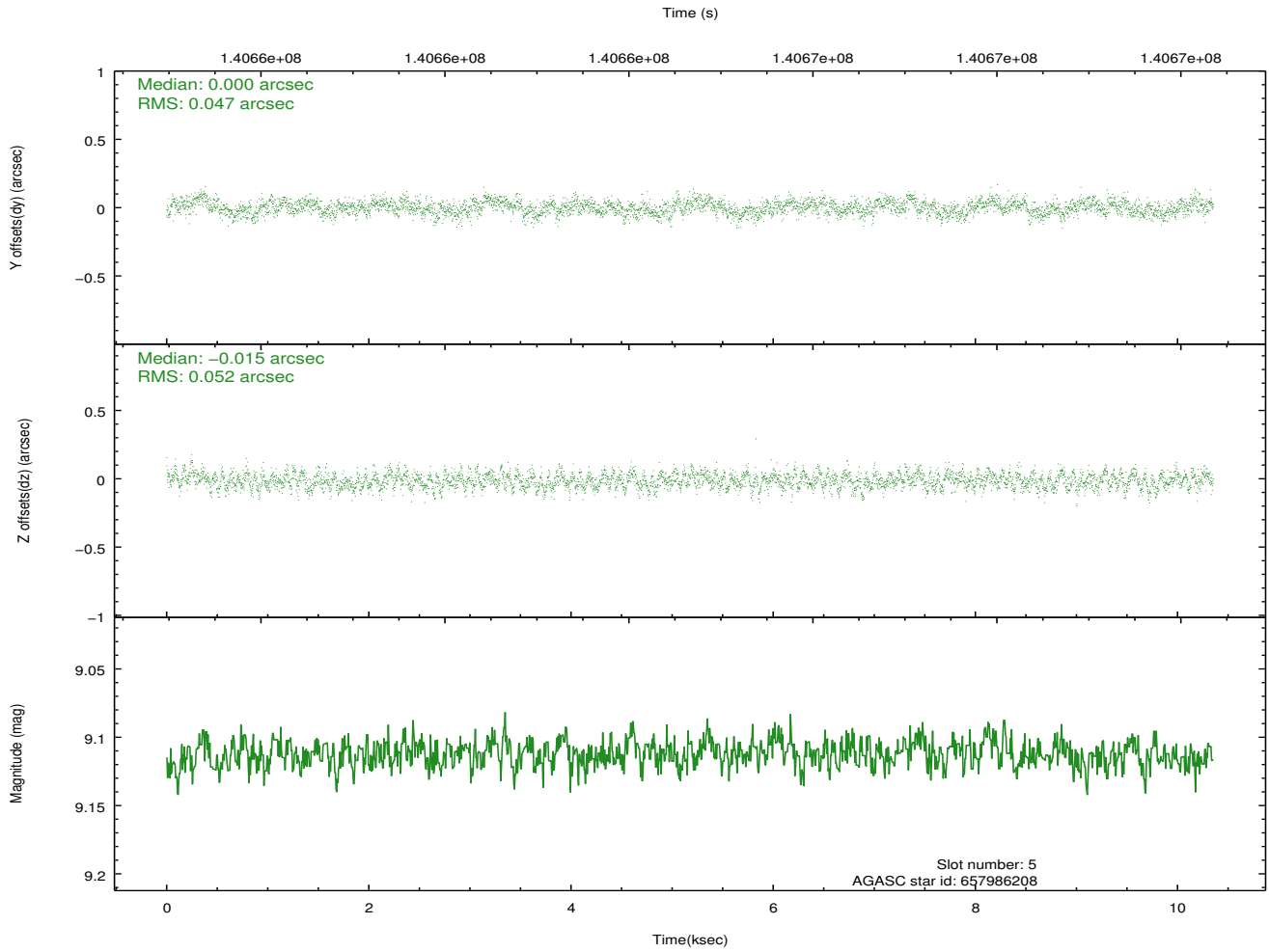
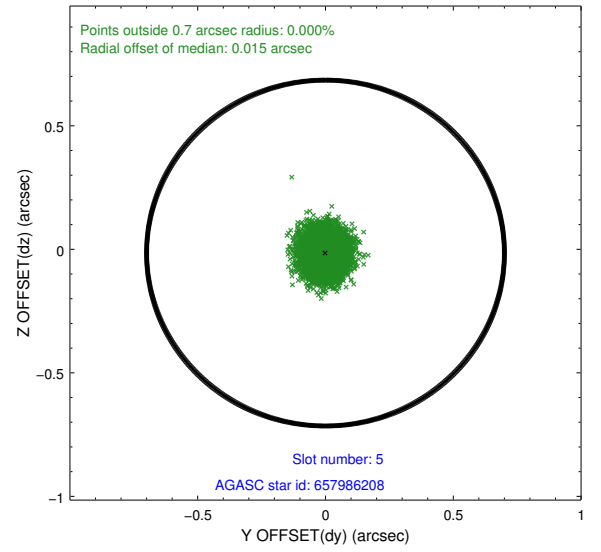
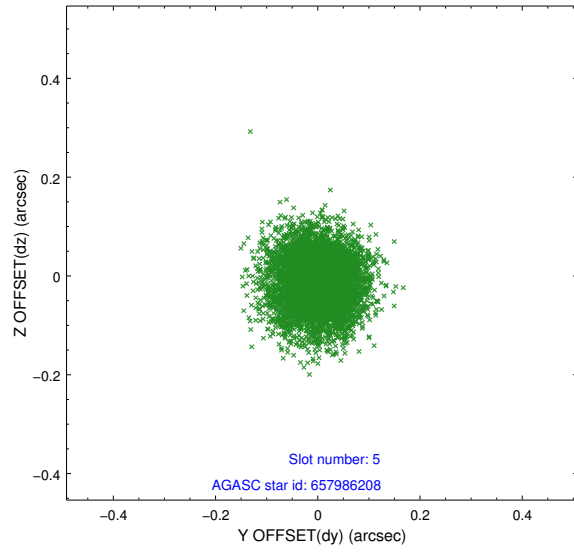
2.4.1 Slot 3



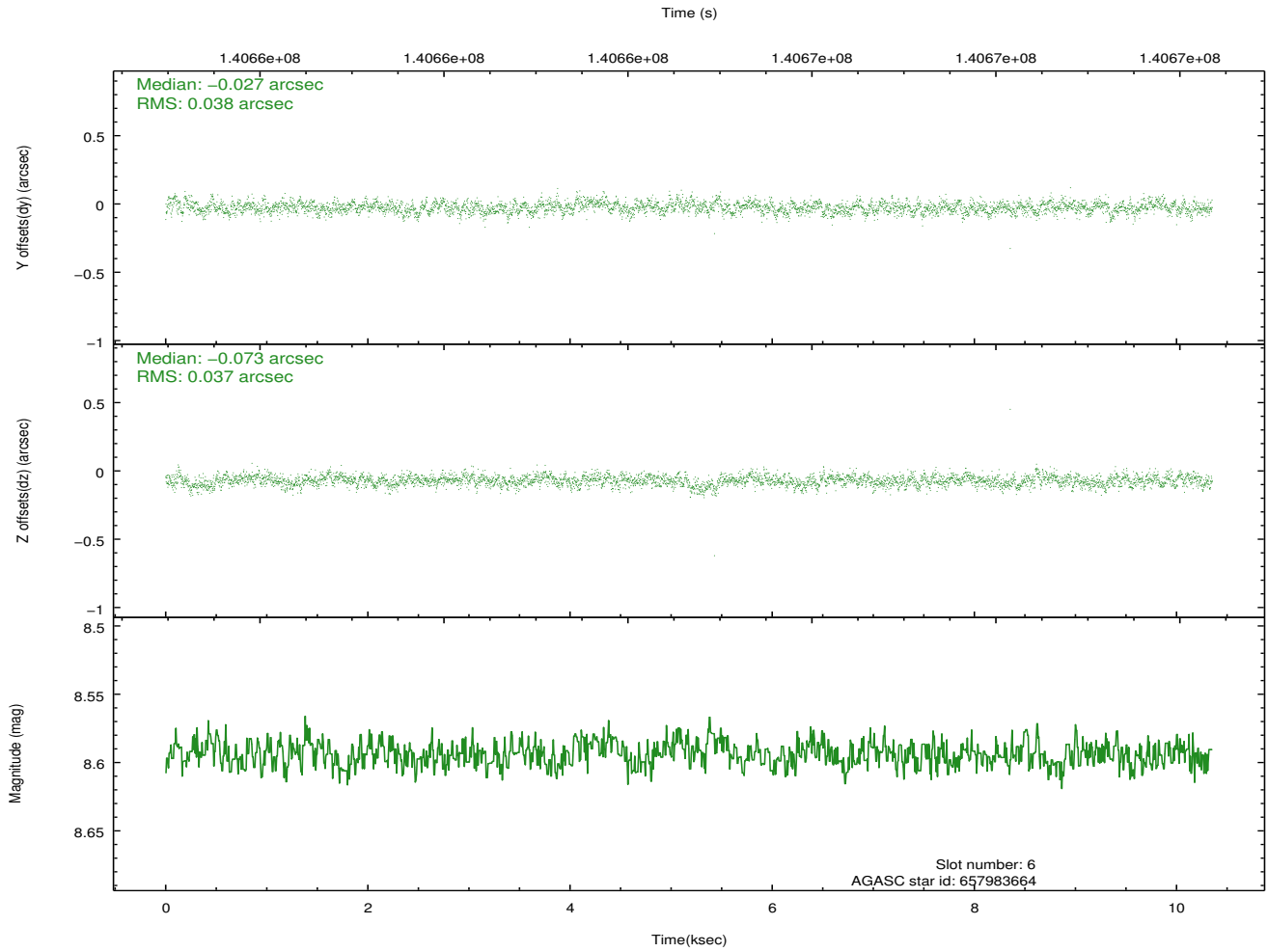
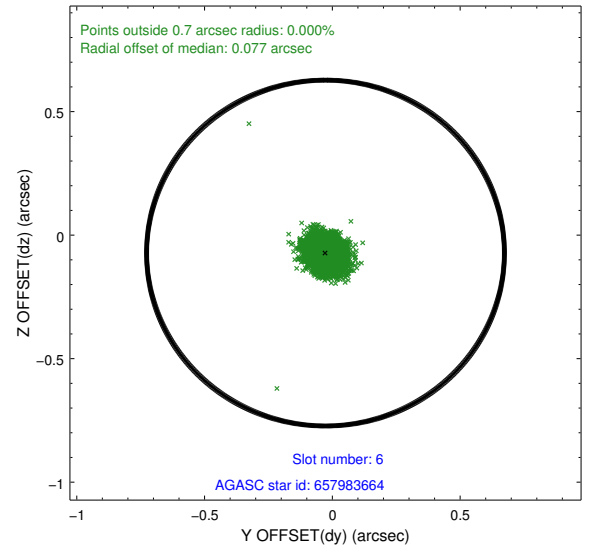
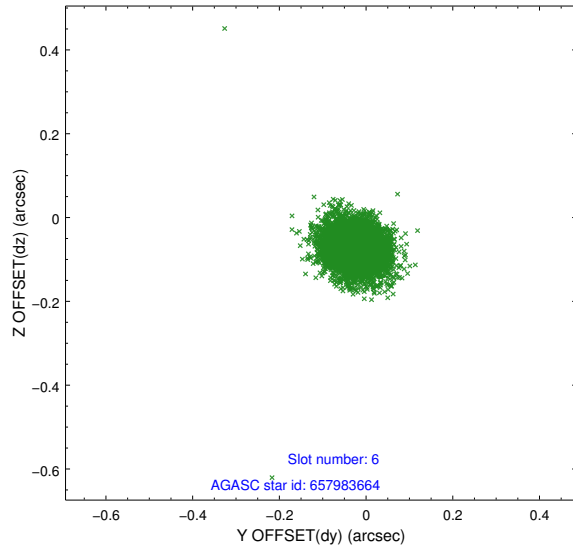
2.4.2 Slot 4



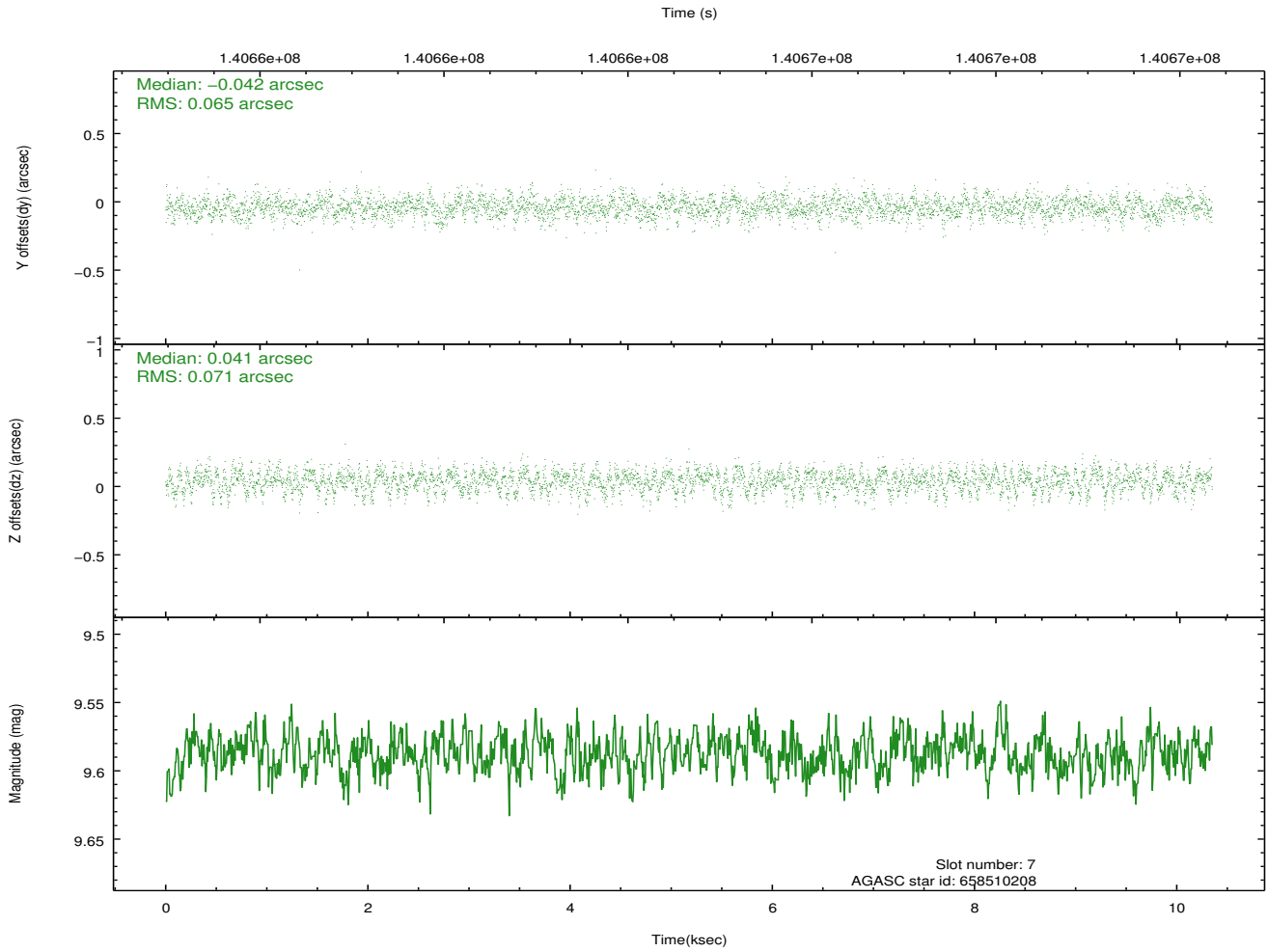
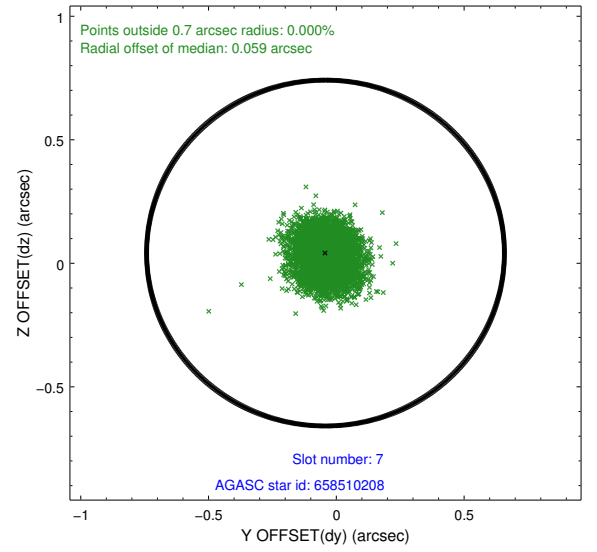
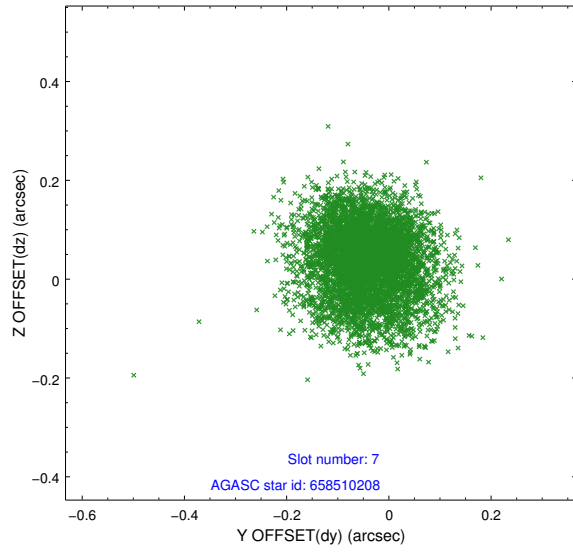
2.4.3 Slot 5



2.4.4 Slot 6

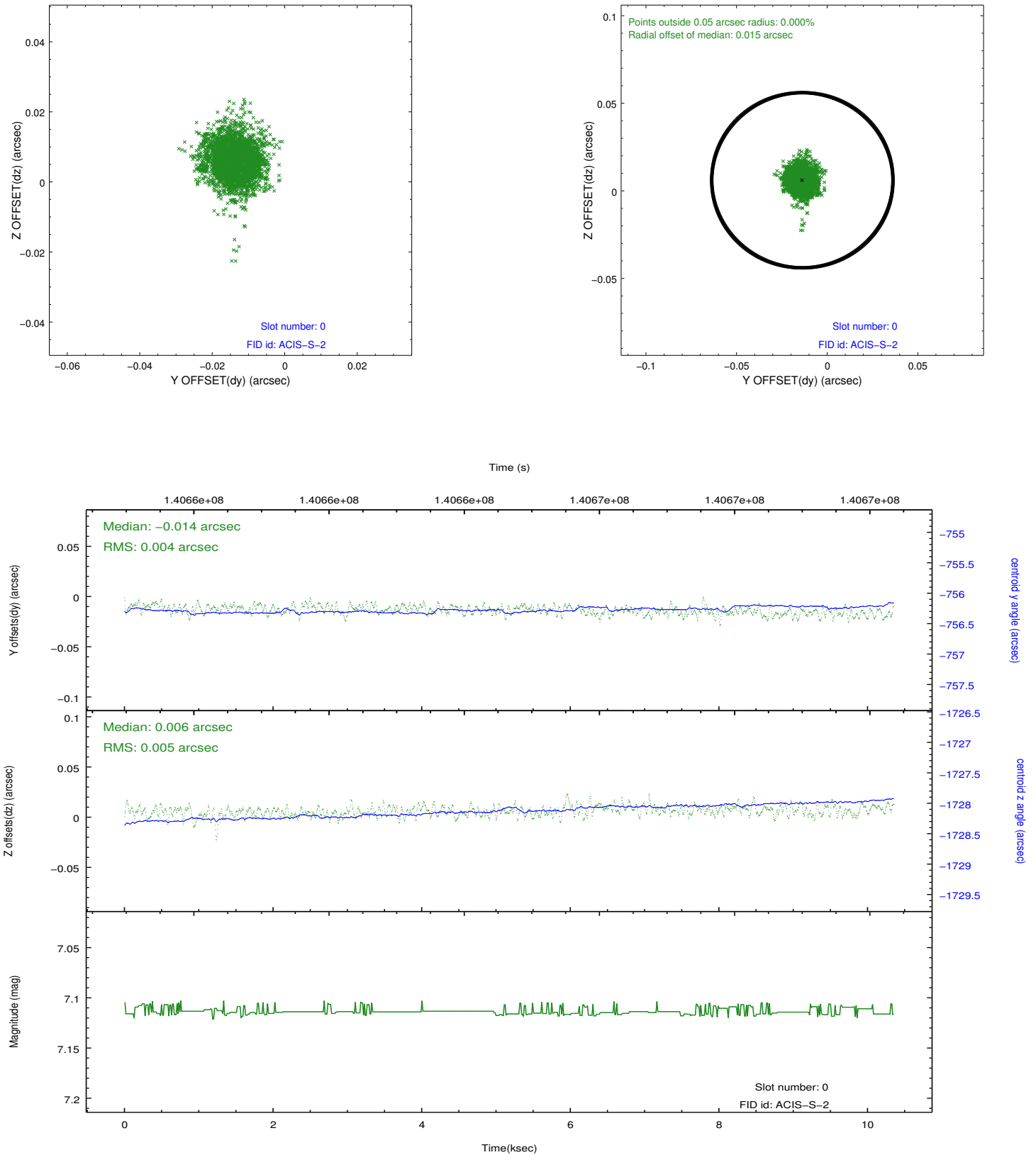


2.4.5 Slot 7

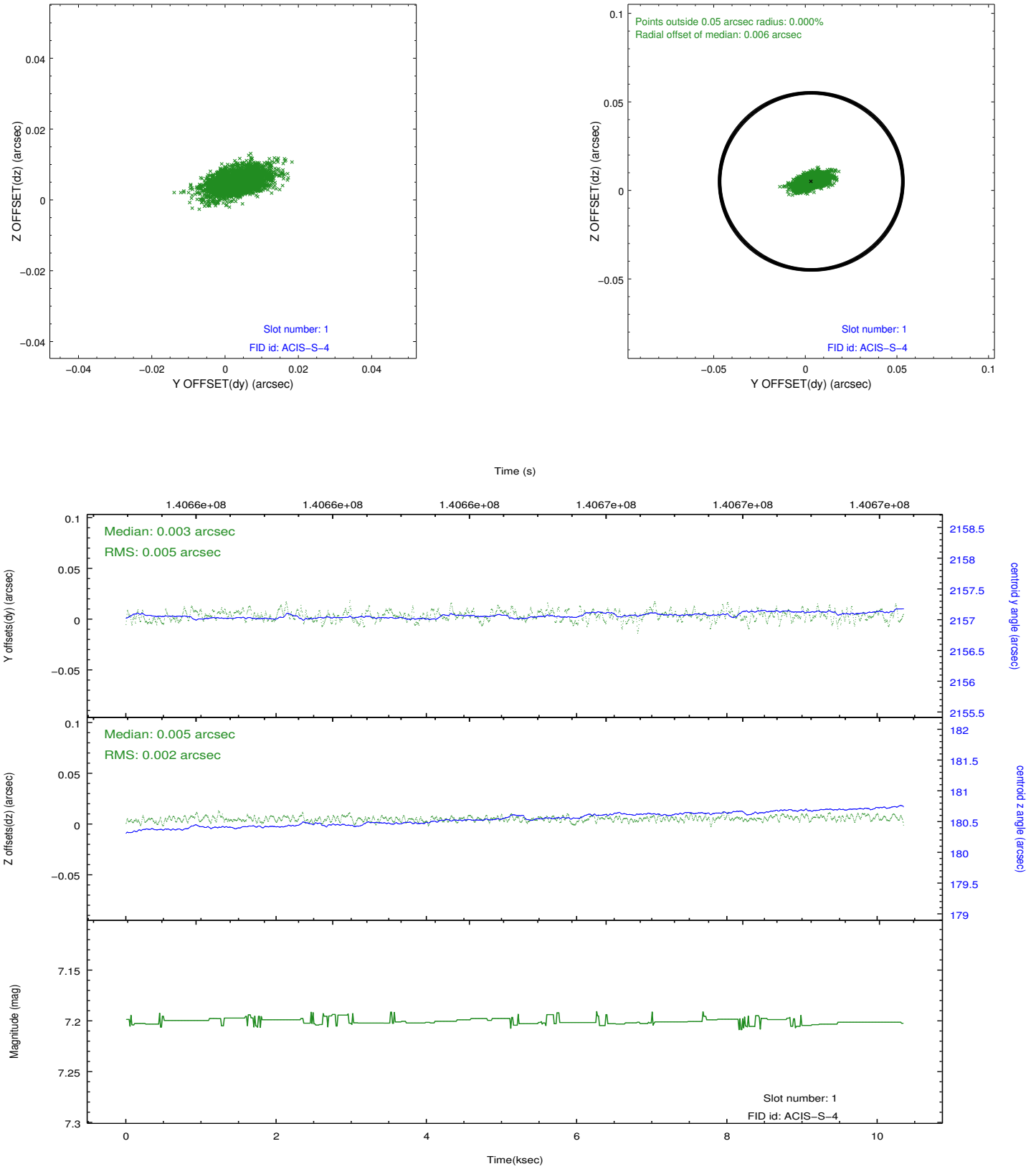


2.5 FID Slots

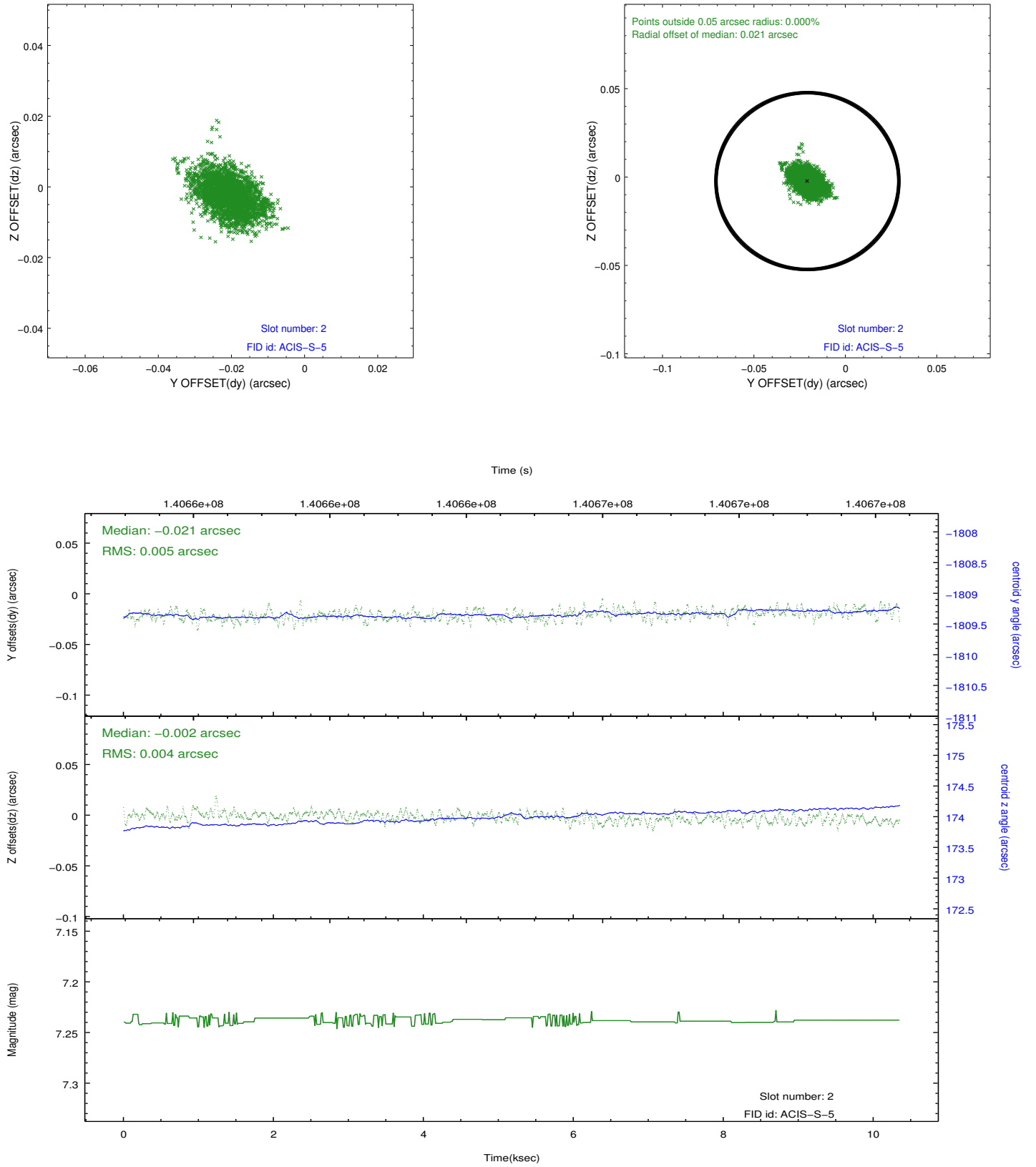
2.5.1 Slot 0



2.5.2 Slot 1



2.5.3 Slot 2



A Summary

A.1 Status

V&V Scientist	Jen Lauer
V&V Date (YYYY-MM-DD)	2012.10.18
V&V Edition	1
V&V Disposition and Status	OK
V&V Charge Time	9.964

A.2 Comments