

V&V Reference Report

L2 ASCDS Version : 7.6.9

Observation 3102 - L2 Version 001
Chandra X-Ray Center

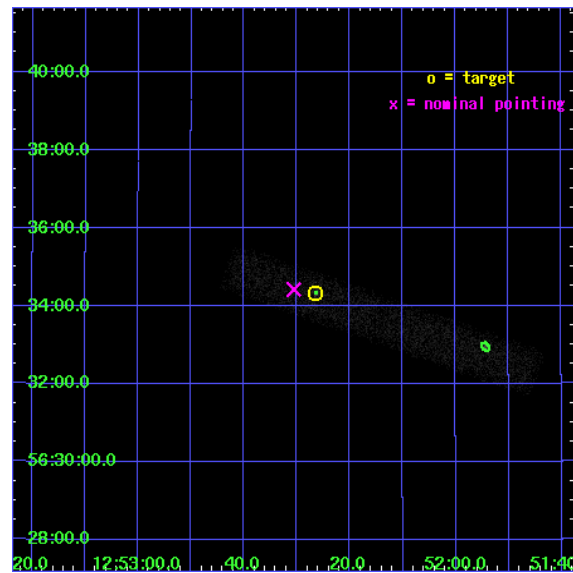
L2 Processing Date : Oct 11 2006

Contents

1	Front	2
2	OBI	3
2.1	OBI	3
2.1.1	Images	3
2.1.2	Bias	3
2.1.3	Parameters	4
2.1.4	Events	4
2.2	Compared Parameters	5
2.3	Aspect	6
2.4	Star Slots	9
2.4.1	Slot 3	9
2.4.2	Slot 4	10
2.4.3	Slot 5	11
2.4.4	Slot 6	12
2.4.5	Slot 7	13
2.5	FID Slots	14
2.5.1	Slot 0	14
2.5.2	Slot 1	15
2.5.3	Slot 2	16
3	Point Sources	17
A	Summary	18
A.1	Status	18
A.2	Comments	18

1 Front

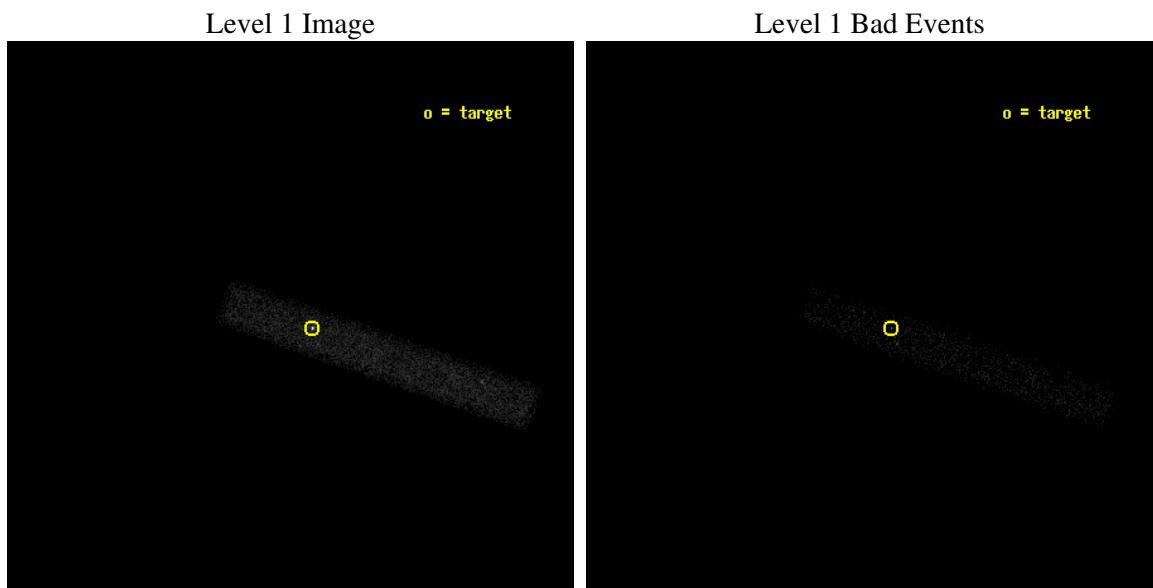
seq_num	700541
obs_id	3102
title	X-RAY IMAGING OF GPS AND CSS QUASARS
observer	Dr Aneta Siemiginowska
object	Q1250+568
dtcycle	0
cycle	P
ra_targ	193.11
dec_targ	56.572139
ra_nom	193.12744208052
dec_nom	56.57364277999
roll_nom	18.989801403266
revision	2
ontime	15444.000230134
livetime	14006.893007558
ontime7	15444.000230134
l2events	10246



2 OBI

2.1 OBI

2.1.1 Images



2.1.2 Bias

Chip 7



2.1.3 Parameters

obi_num	1
ascdsver	7.6.9
caldbver	3.2.3
date	2006-10-11T19:53:20
revision	2

sched_exp_time	15000.000000
ontime	15860.485289127
ontime7	15860.485289127
l1events	20426

2.1.4 Events

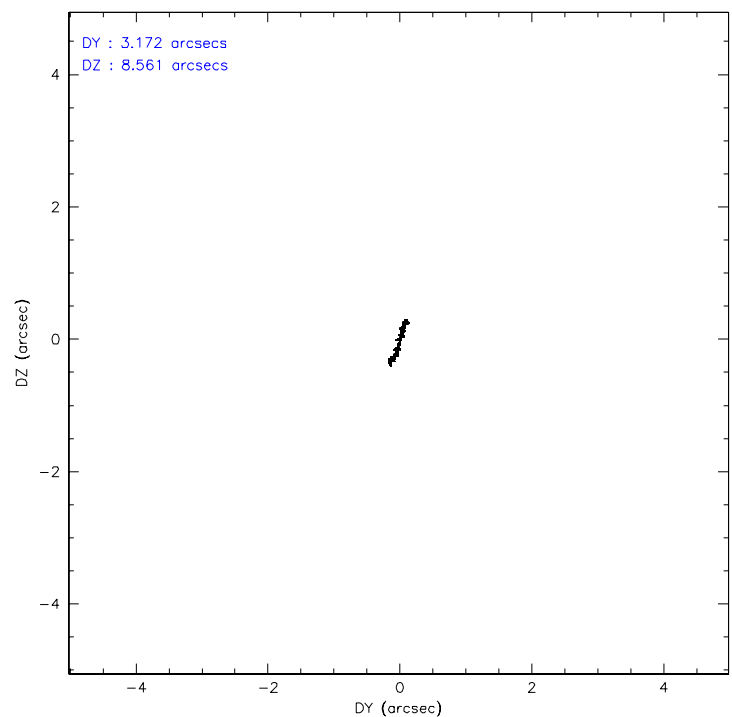
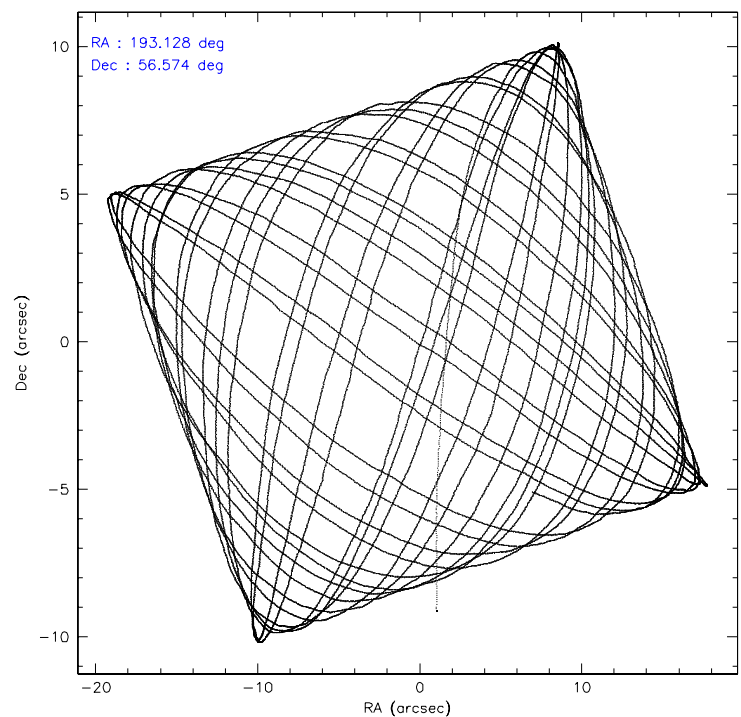
	ccd 7
level 1 events	20426
rejected events	9847
rejected %	48%

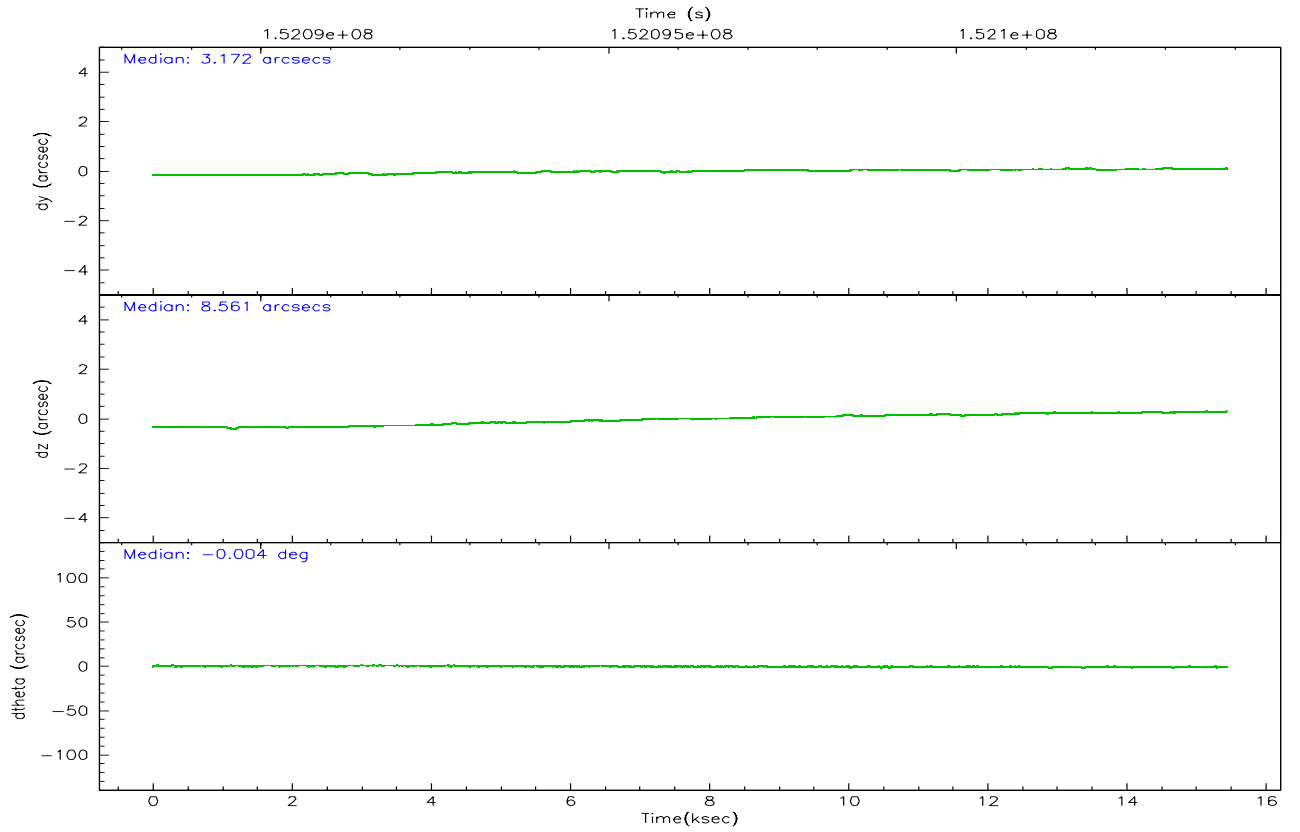
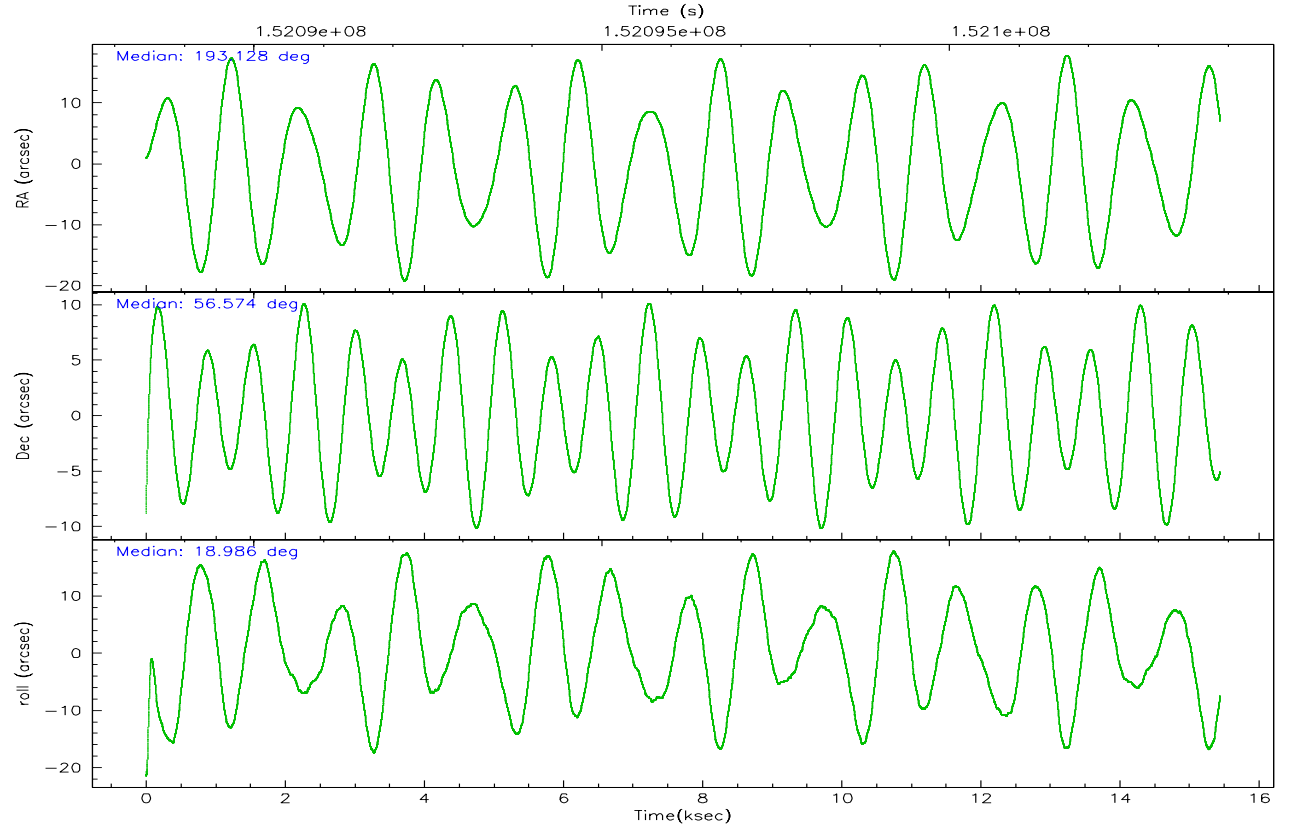
	ccd 7
grade 0 events	1781
	8%
grade 1 events	22
	0%
grade 2 events	2358
	11%
grade 3 events	1200
	5%
grade 4 events	1125
	5%
grade 5 events	1255
	6%
grade 6 events	4359
	21%
grade 7 events	8326
	40%

2.2 Compared Parameters

Parameter	Planned	Actual	Parameter	Planned	Actual
Instrument	ACIS	ACIS	Obspar format version number	6	6
Detector	ACIS-7	ACIS-7	Obspar file type	PREDICTED	ACTUAL
Grating	NONE	NONE	Obspar update status	NONE	UPDATED
Data mode	VFAINT	VFAINT	Number of optional ACIS chips dropped	0	0
Observation mode	POINTING	POINTING	On-chip summing requested	N	N
Pointing RA	193.095421	193.1274420805233	Subarray requested	CUSTOM	1/8
Pointing Dec	56.552843	56.57364277999039	Subarray start row	449	449
Pointing Roll	18.859918	18.98980140326589	Subarray row count	128	128
SIM focus pos (mm)	-0.684267	-0.6828225247311905	Alternating exposures requested	N	N
SIM defocus (mm)	0	0.001444936568705701	Primary exposure time	0.000000	0.4
SIM translation stage pos (mm)	-190.132523	-190.1400660498719			
SIM translation stage offset (mm)	0	0.00754346686406393			
Observation start time	152088889.184000	152087796.89315			
Observation start date	2002-10-27T06:53:45	2002-10-27T06:36:36			
Observation end time	152103889.184000	152104522.33135			
Observation end date	2002-10-27T11:03:45	2002-10-27T11:15:22			
Read mode	TIMED	TIMED			

2.3 Aspect



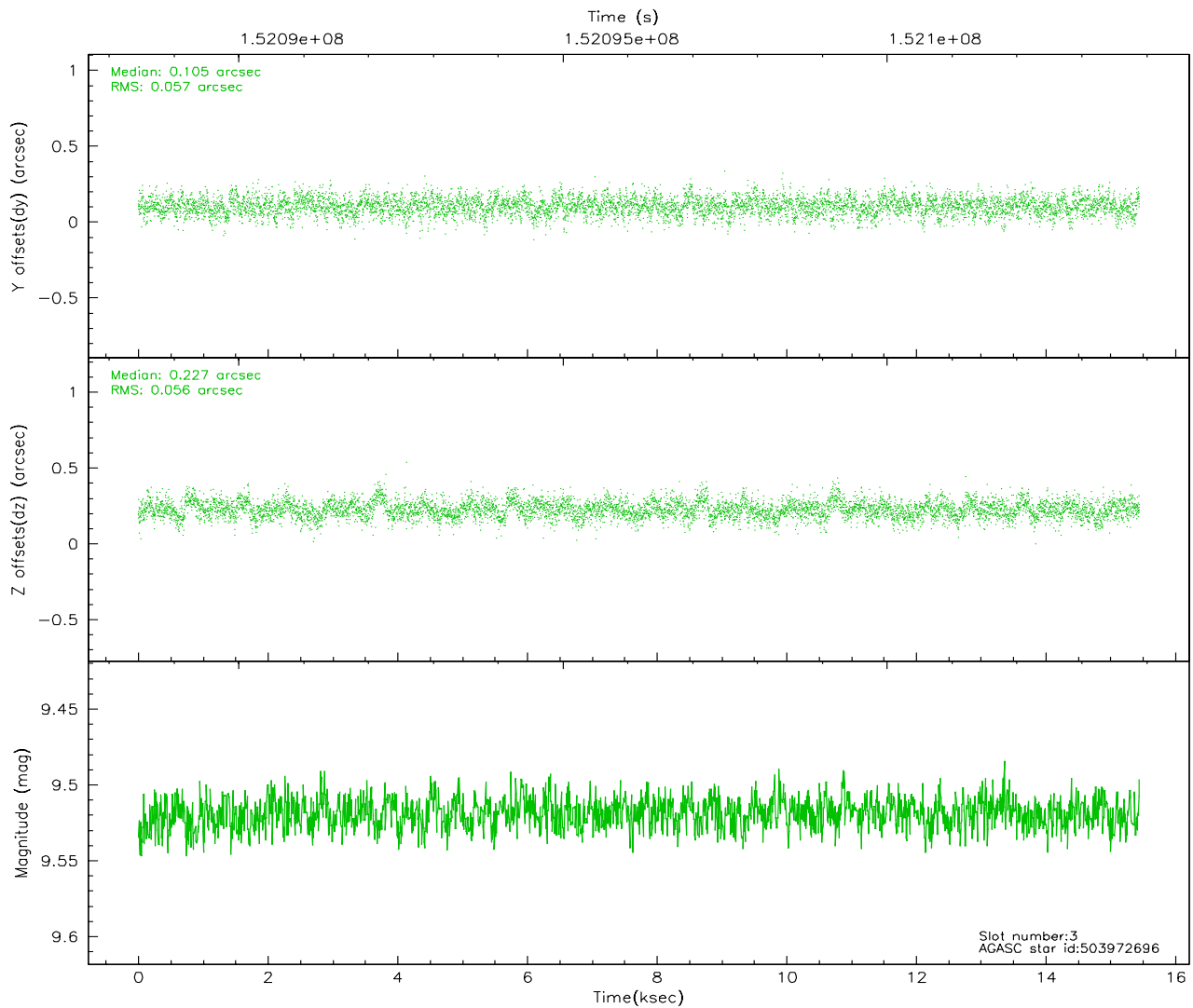
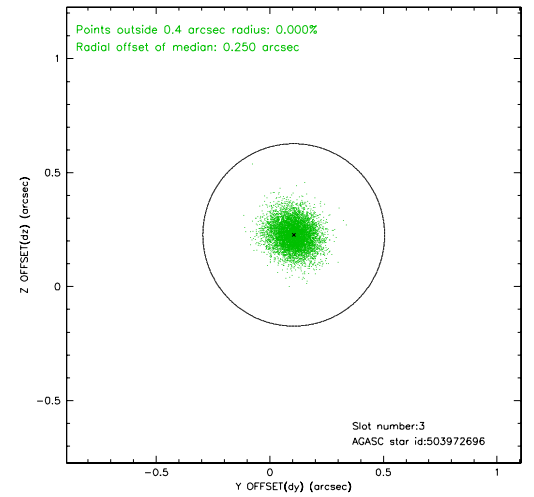
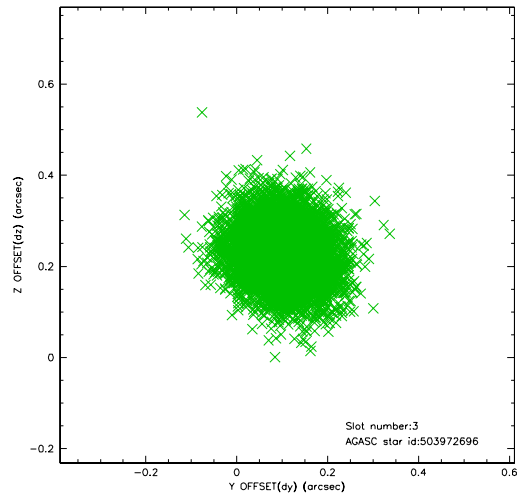


Slot Statistics

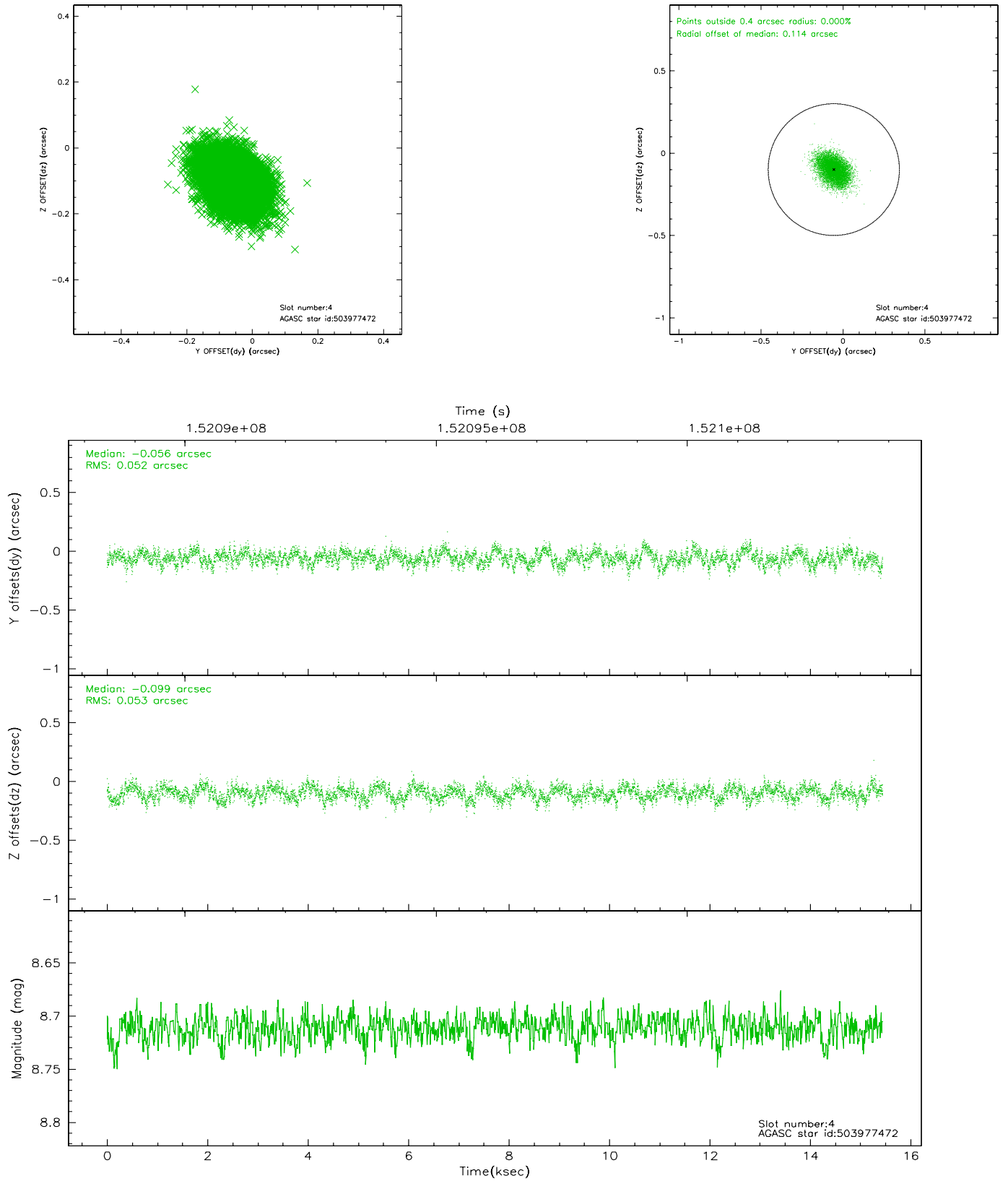
slot	status	id	mag	n_pts	med_dy	med_dz	dr1	dr2	ra	dec	mean_y	mean_z
0	FID	ACIS-S-2	7.11	3766	-0.006	0.013	0.009	0.015	0.000000	0.000000	-755.82	-1729.72
1	FID	ACIS-S-4	7.20	3765	-0.034	-0.000	0.009	0.017	0.000000	0.000000	2157.31	178.44
2	FID	ACIS-S-5	7.24	3766	0.009	-0.003	0.007	0.012	0.000000	0.000000	-1808.27	172.45
3	GUIDE	503972696	9.52	7527	0.105	0.227	0.085	0.139	192.051415	56.314647	-2244.76	-122.25
4	GUIDE	503977472	8.71	7532	-0.056	-0.099	0.080	0.125	193.107383	56.634174	116.58	269.53
5	GUIDE	503978872	9.49	7534	-0.069	-0.050	0.094	0.152	193.810866	57.011691	1863.04	1117.15
6	GUIDE	503979104	9.83	7524	-0.012	0.125	0.124	0.197	194.089330	56.607844	1932.33	-435.19
7	GUIDE	503979848	8.75	7533	0.018	-0.202	0.085	0.145	191.895963	56.994167	-1705.65	2283.26

2.4 Star Slots

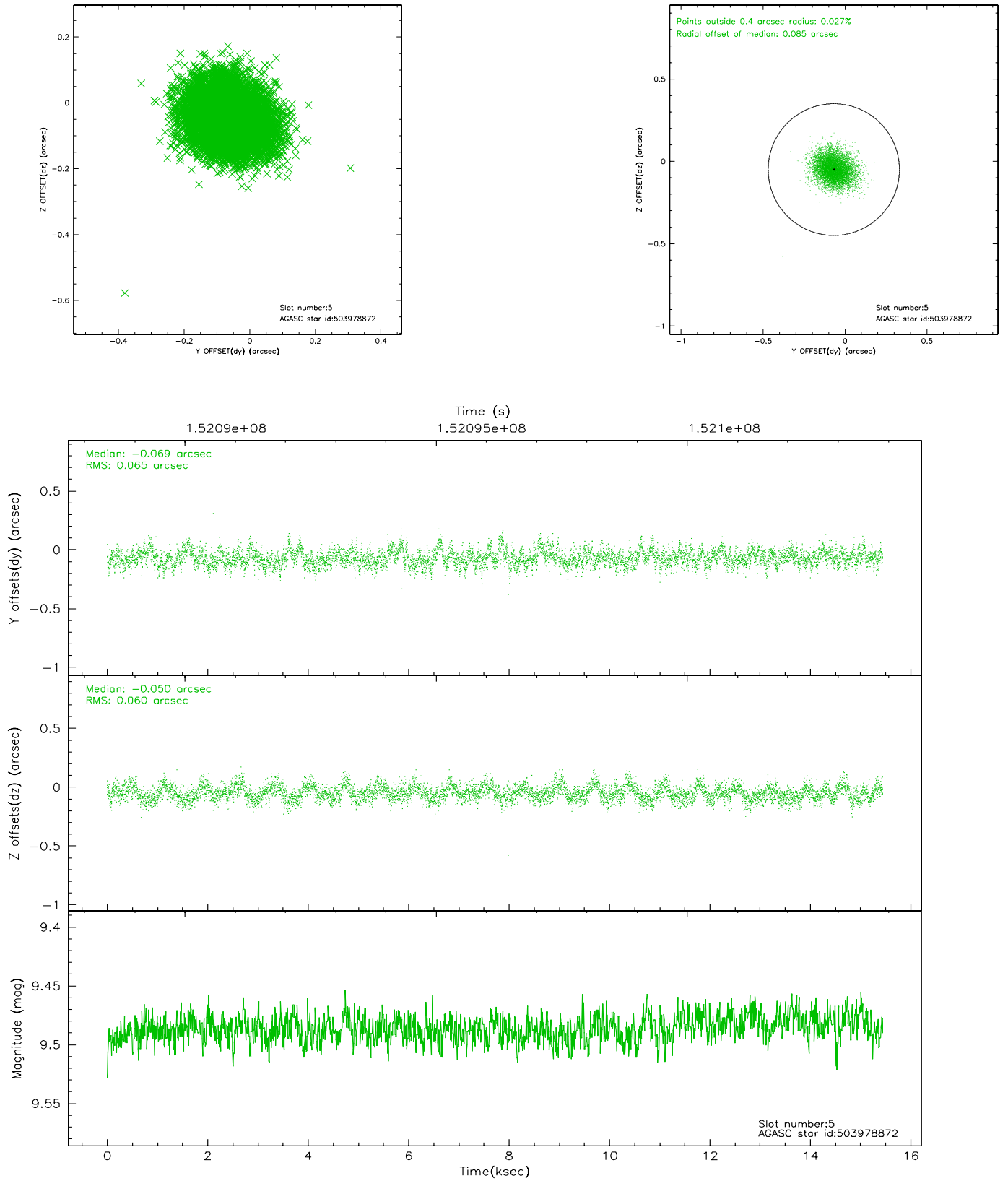
2.4.1 Slot 3



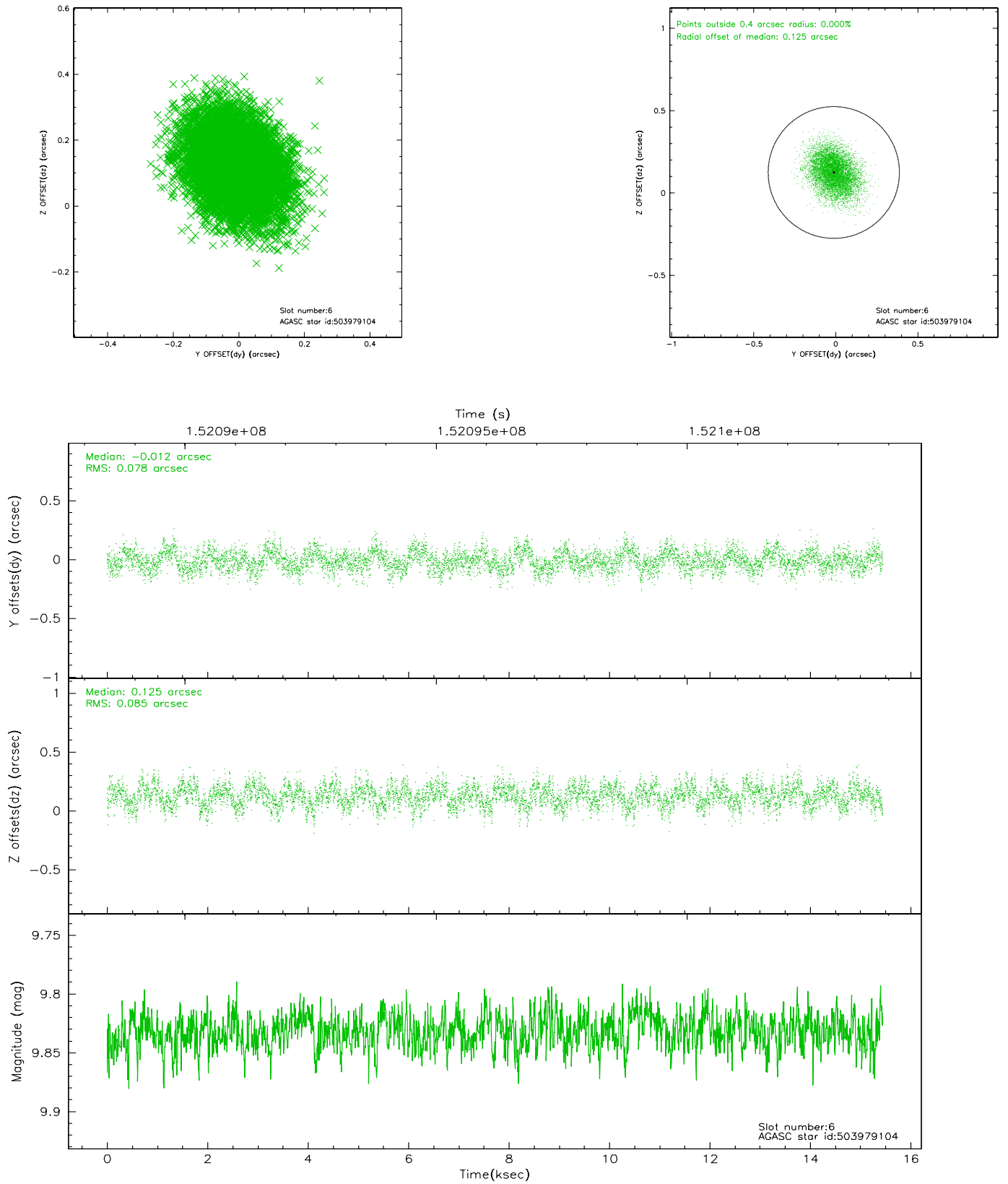
2.4.2 Slot 4



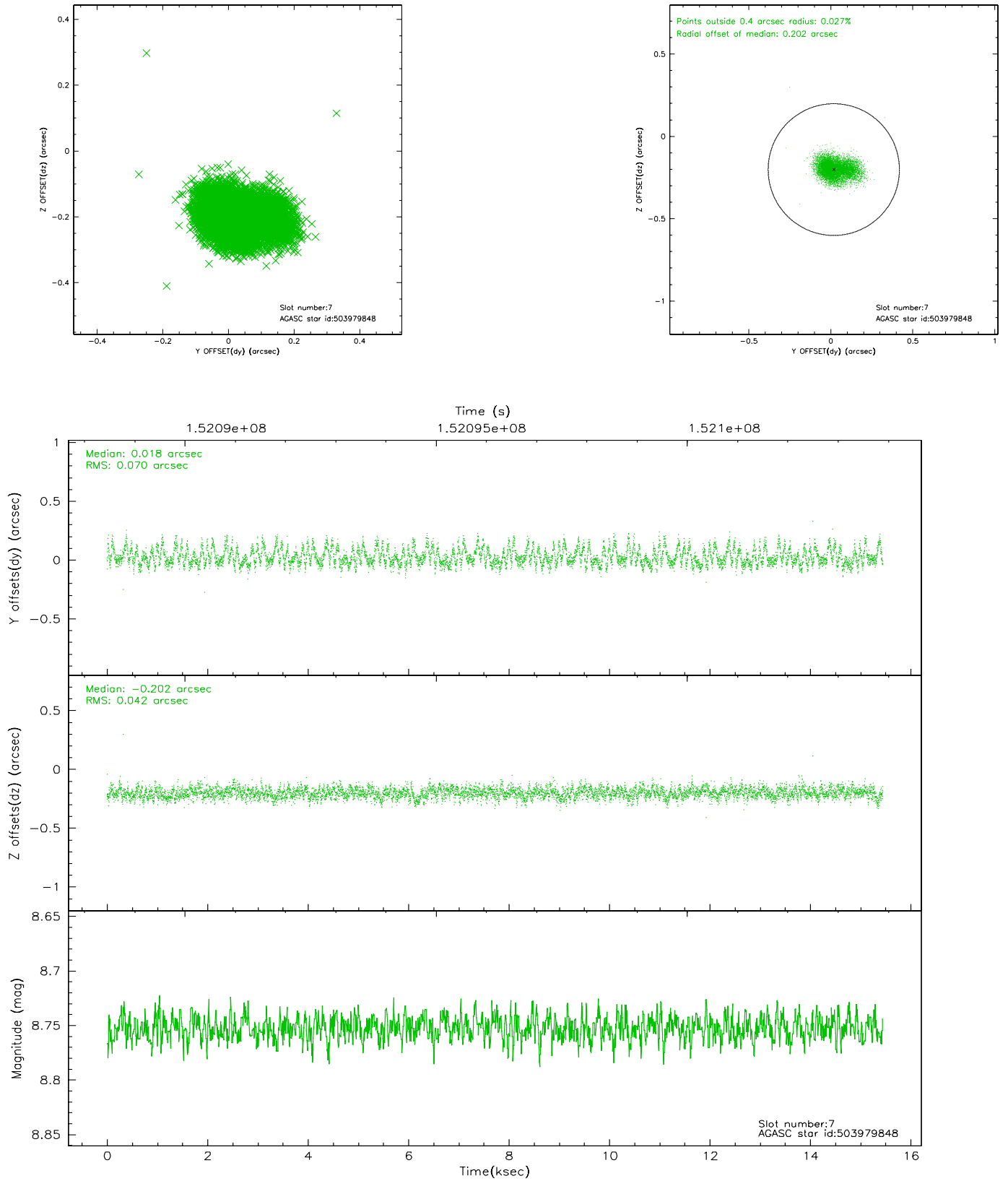
2.4.3 Slot 5



2.4.4 Slot 6

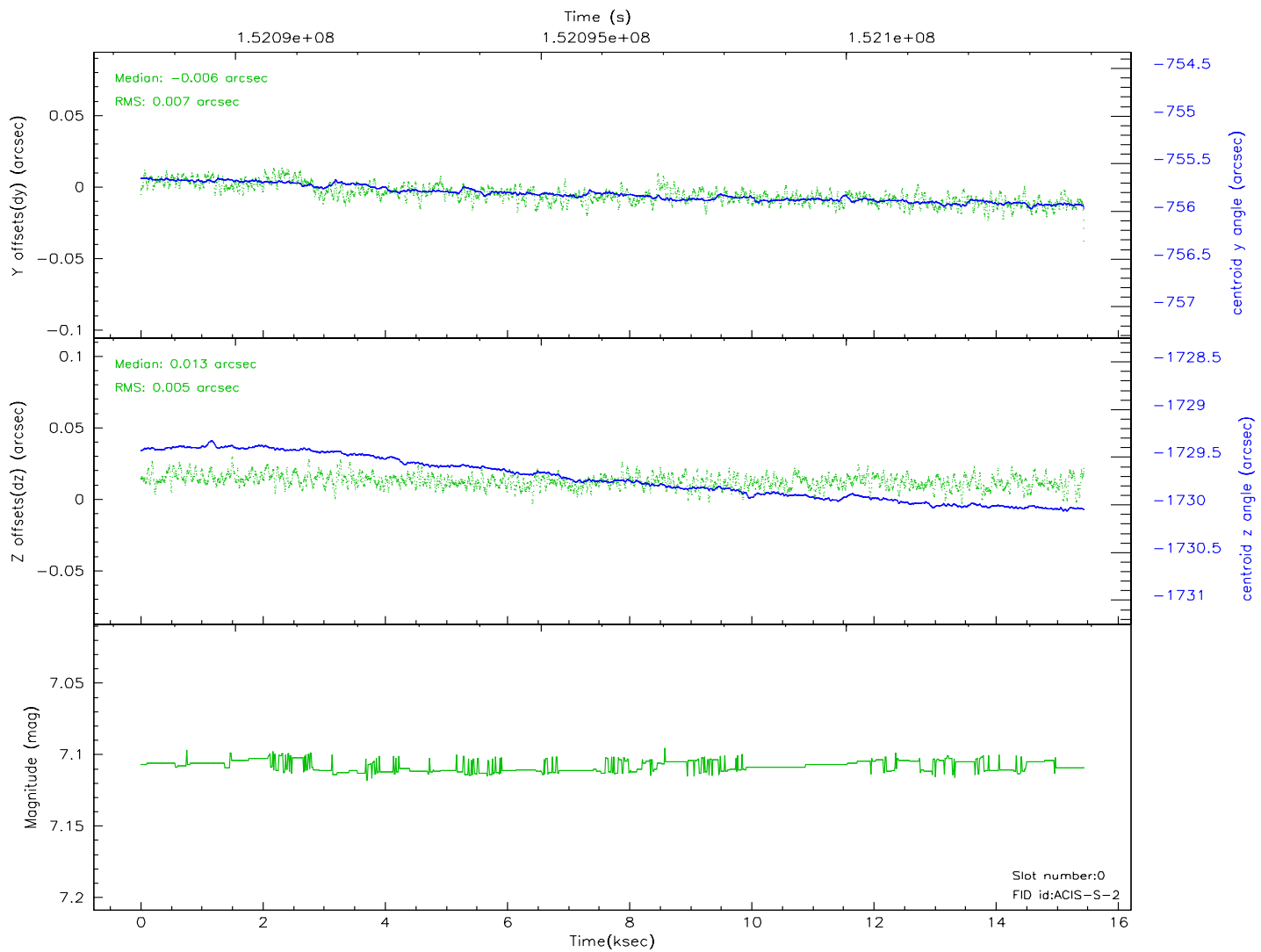
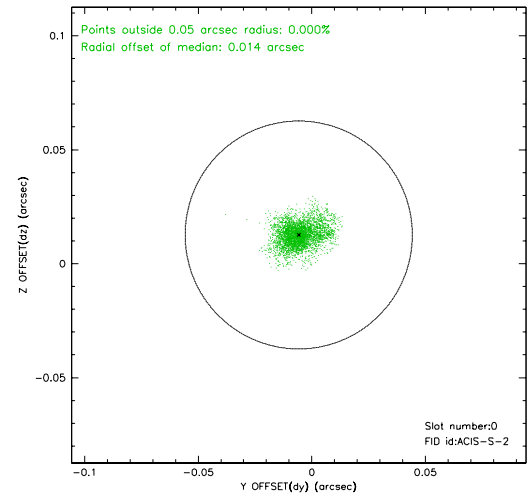
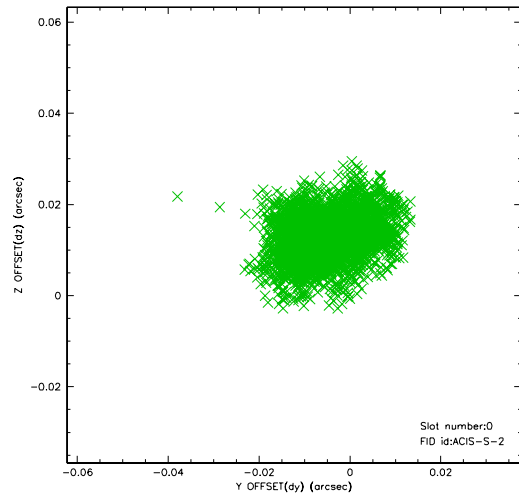


2.4.5 Slot 7

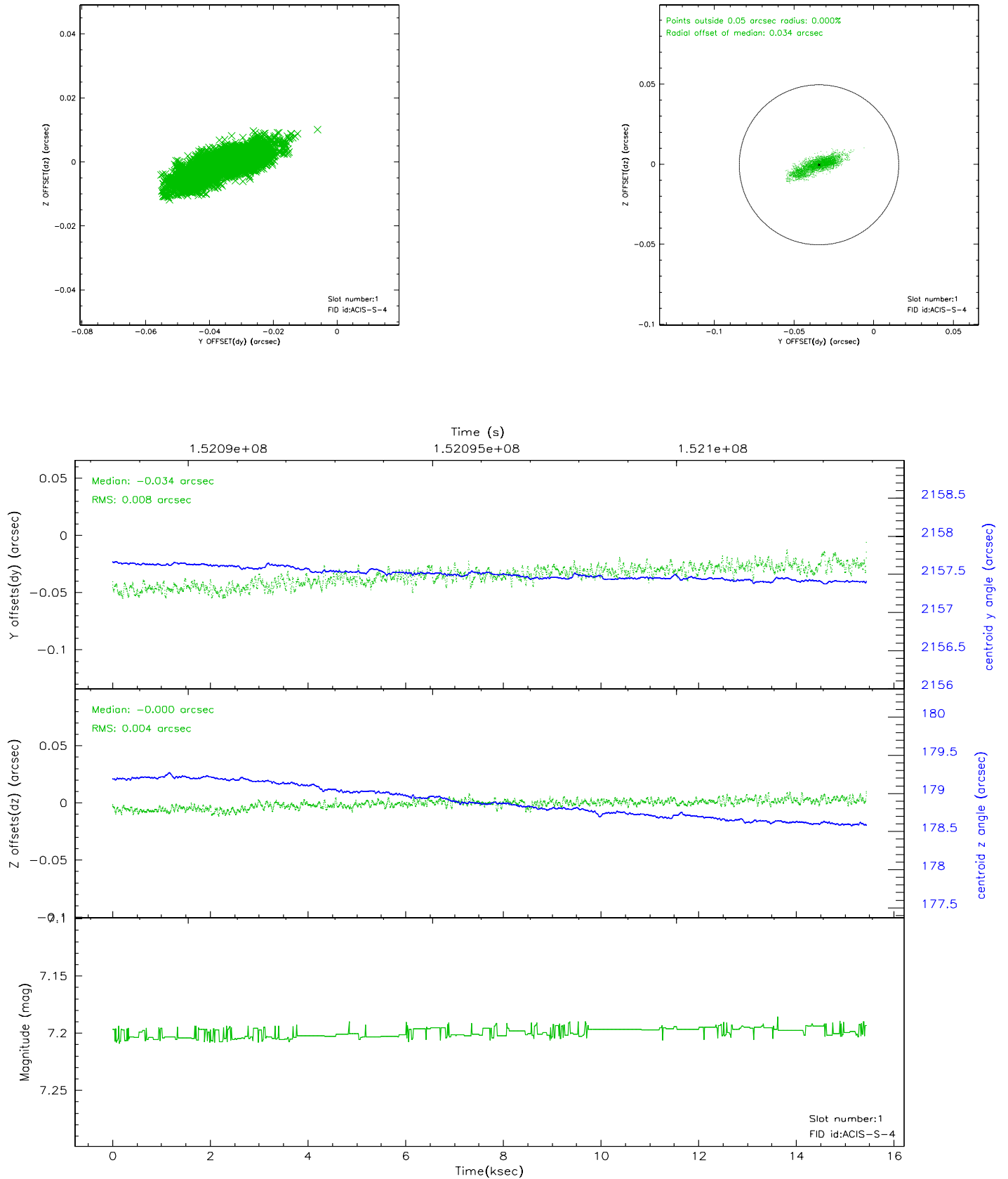


2.5 FID Slots

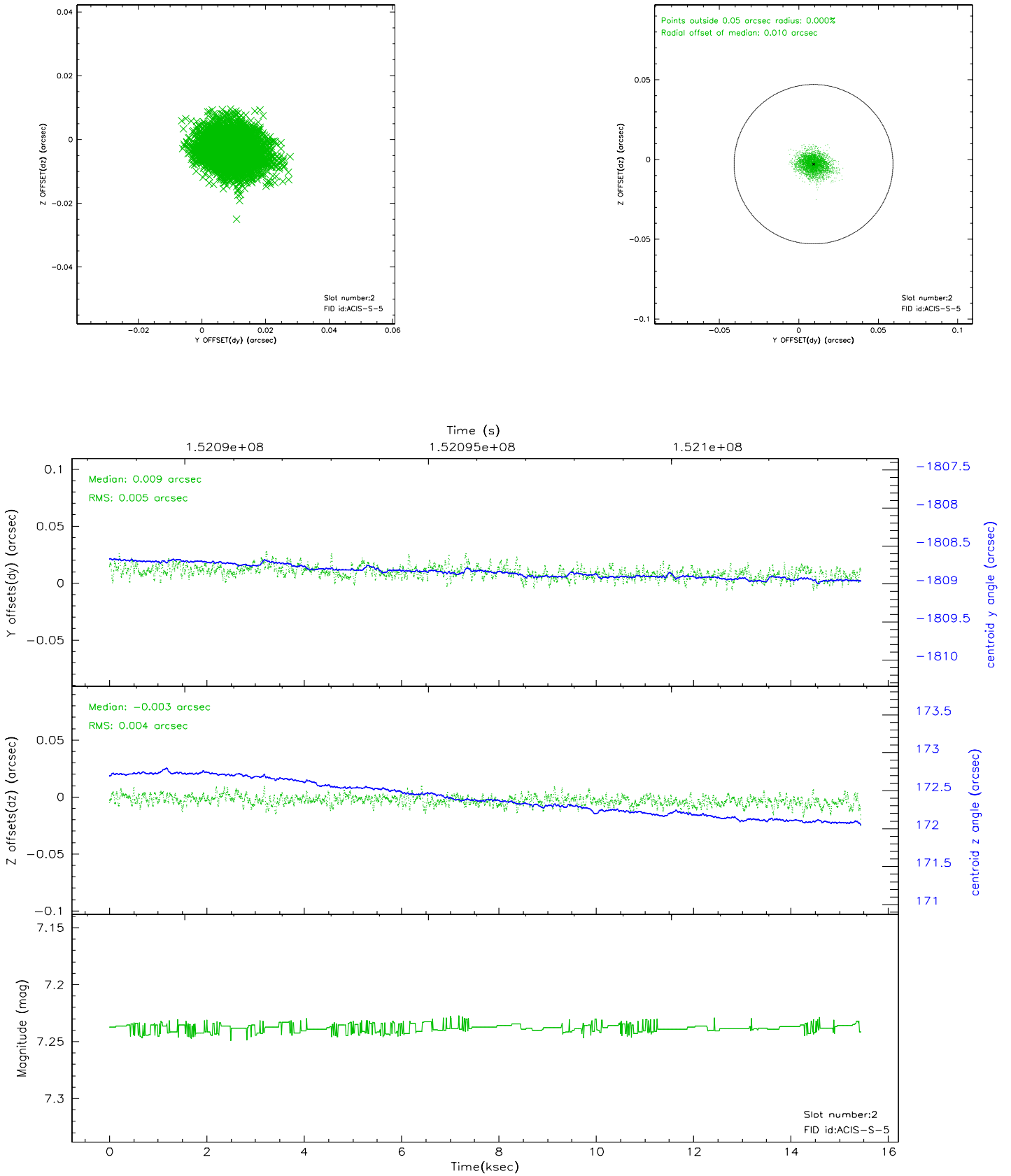
2.5.1 Slot 0



2.5.2 Slot 1



2.5.3 Slot 2



3 Point Sources

5.21 arcmin



A Summary

A.1 Status

V&V Scientist	Jen Lauer
V&V Date (YYYY-MM-DD)	2006.10.12
V&V Edition	1
V&V Disposition and Status	OK
V&V Charge Time	15.444

A.2 Comments