

# V&V Reference Report

## L2 ASCDS Version : 7.6.9

Observation 3082 - L2 Version 001  
Chandra X-Ray Center

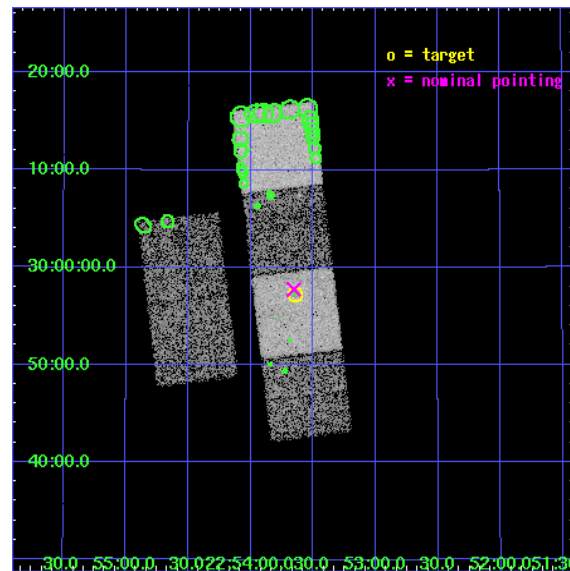
L2 Processing Date : Sep 14 2006

## Contents

<b>1</b>	<b>Front</b>	<b>2</b>
<b>2</b>	<b>OBI</b>	<b>3</b>
2.1	OBI . . . . .	3
2.1.1	Images . . . . .	3
2.1.2	Bias . . . . .	3
2.1.3	Parameters . . . . .	4
2.1.4	Events . . . . .	4
2.2	Compared Parameters . . . . .	5
2.3	Aspect . . . . .	6
2.4	Star Slots . . . . .	9
2.4.1	Slot 3 . . . . .	9
2.4.2	Slot 4 . . . . .	10
2.4.3	Slot 5 . . . . .	11
2.4.4	Slot 6 . . . . .	12
2.4.5	Slot 7 . . . . .	13
2.5	FID Slots . . . . .	14
2.5.1	Slot 0 . . . . .	14
2.5.2	Slot 1 . . . . .	15
2.5.3	Slot 2 . . . . .	16
<b>3</b>	<b>Point Sources</b>	<b>17</b>
<b>A</b>	<b>Summary</b>	<b>18</b>
A.1	Status . . . . .	18
A.2	Comments . . . . .	18

# 1 Front

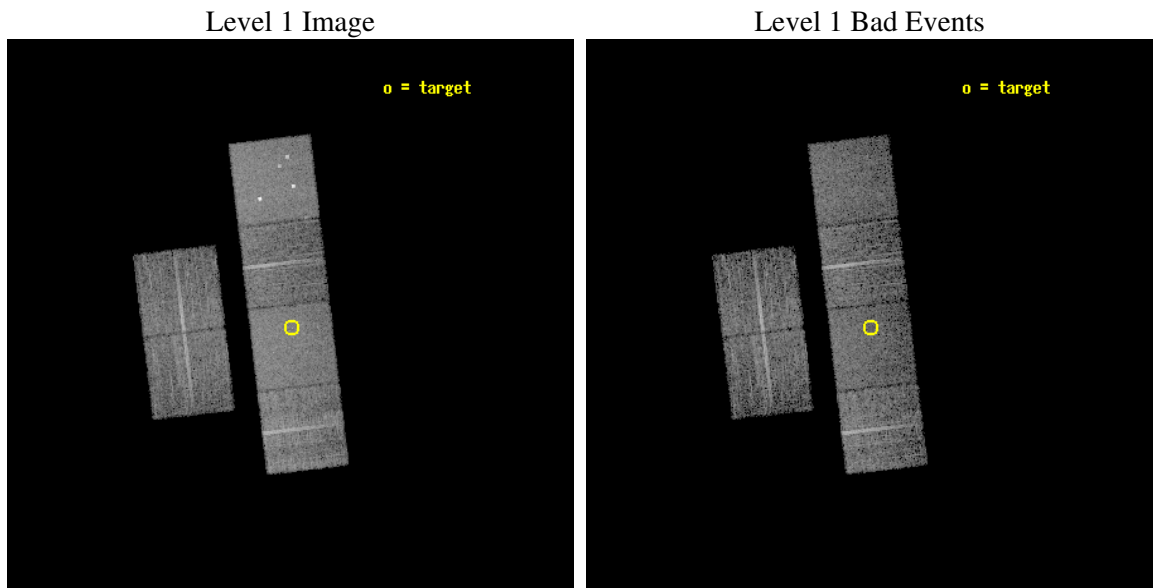
seq_num	700521
obs_id	3082
title	X-RAY WEAK BROAD-LINE QUASARS: ABSORPTION OR INTRINSIC X_RAY WEAKNESS ?
observer	Dr Guido Risaliti
object	HS 2251+2941
dtcycle	0
cycle	P
ra_targ	343.410417
dec_targ	29.953361
ra_nom	343.41368358293
dec_nom	29.962620409638
roll_nom	83.243891148259
revision	2
ontime	7107.1999735236
livetime	7017.2043280168
ontime2	7107.1999735236
ontime3	7107.1999735236
ontime5	7107.1999735236
ontime6	7103.9590132535
ontime7	7107.1999735236
ontime8	7107.1999735236
l2events	68446



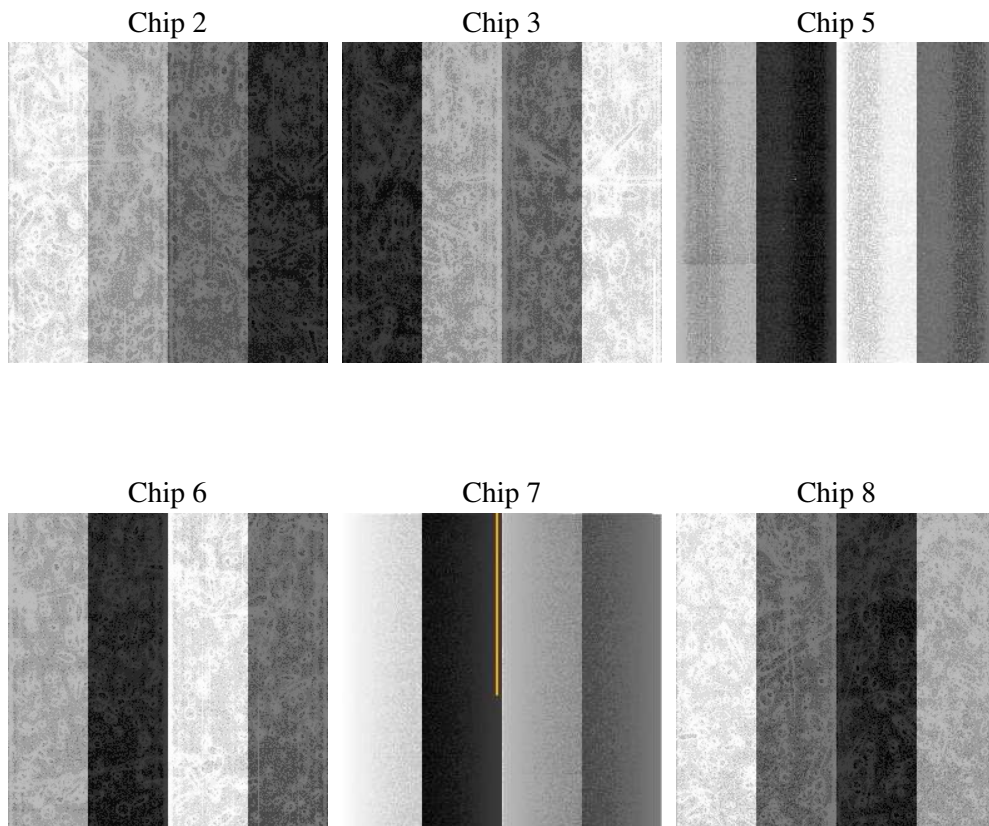
## 2 OBI

### 2.1 OBI

#### 2.1.1 Images



#### 2.1.2 Bias



### 2.1.3 Parameters

obi_num	1
ascdsver	7.6.9
caldbver	3.2.3
date	2006-09-14T17:57:50
revision	2

sched_exp_time	7000.000000
ontime	7408.9251921177
ontime2	7408.9251921177
ontime3	7408.9251921177
ontime5	7408.9251921177
ontime6	7405.6842318475
ontime7	7408.9251921177
ontime8	7408.9251921177
l1events	330024

### 2.1.4 Events

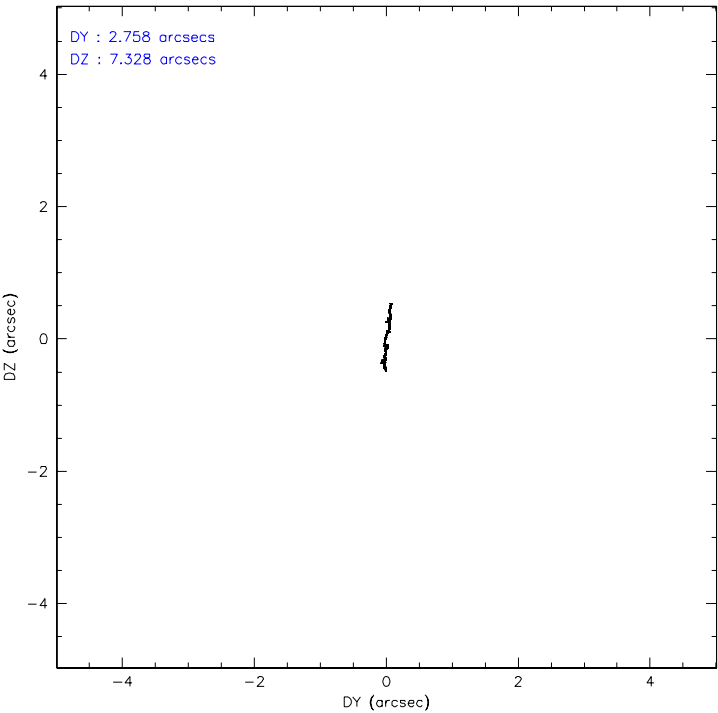
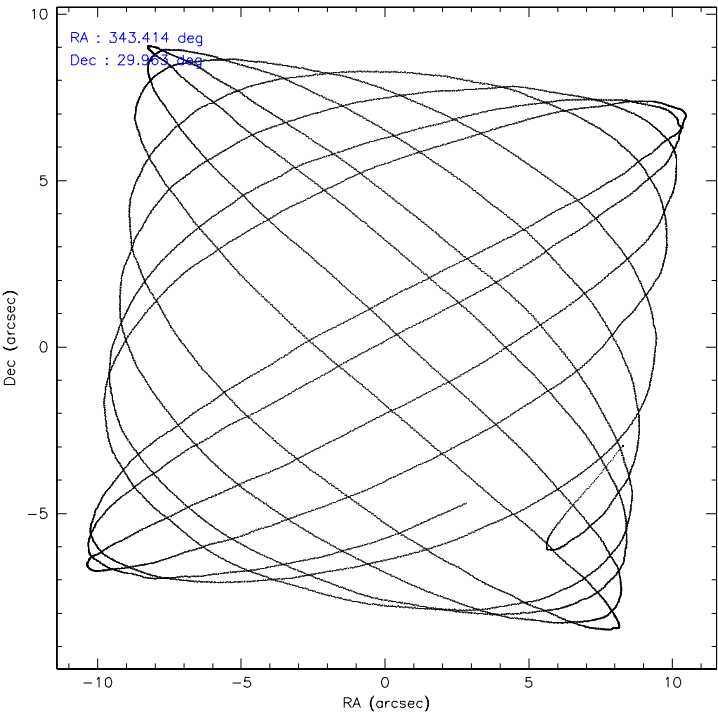
	ccd 2	ccd 3	ccd 5	ccd 6	ccd 7	ccd 8
level 1 events	47383	45251	70042	46302	60097	60949
rejected events	41872	39890	38214	40857	37725	47297
rejected %	88%	88%	54%	88%	62%	77%

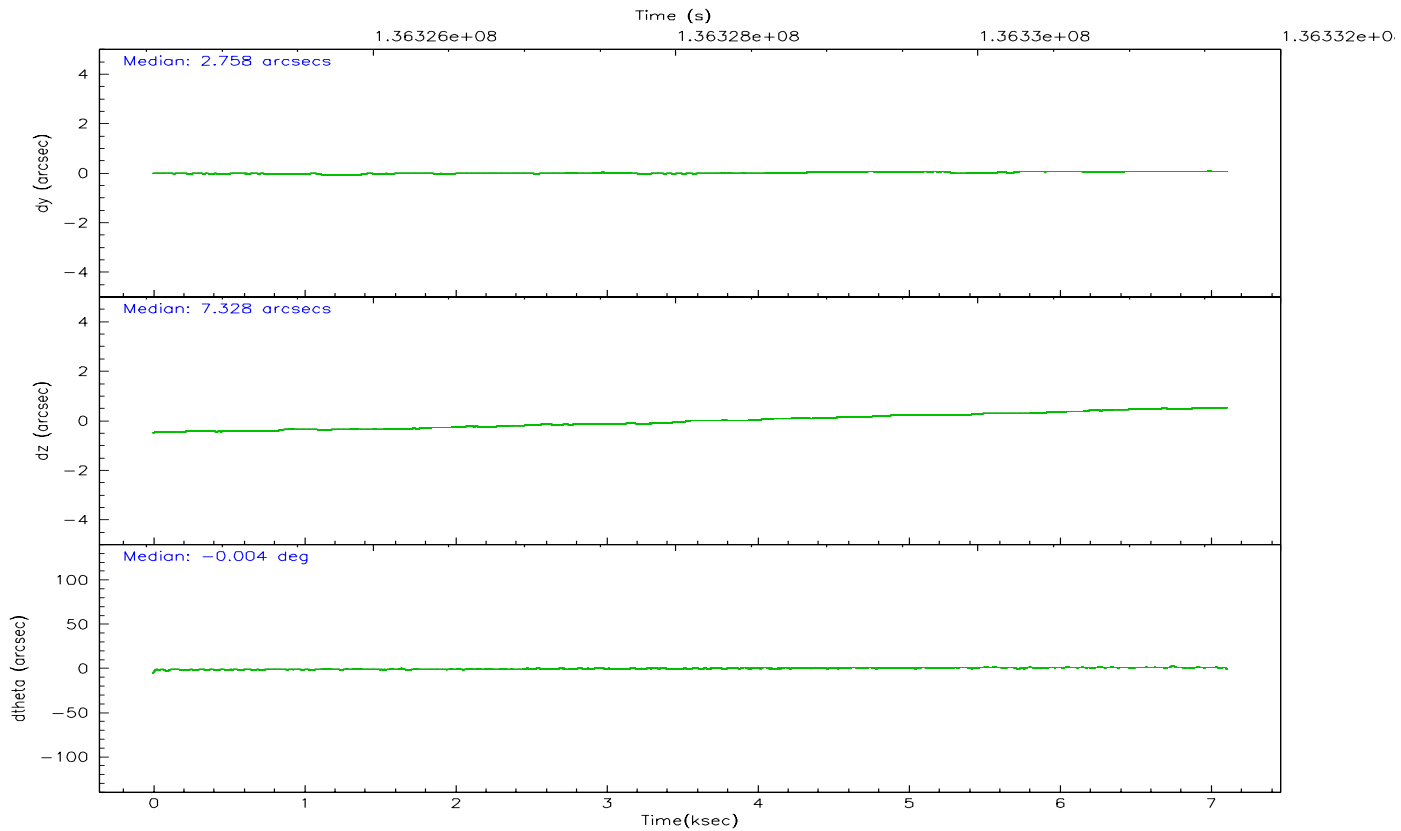
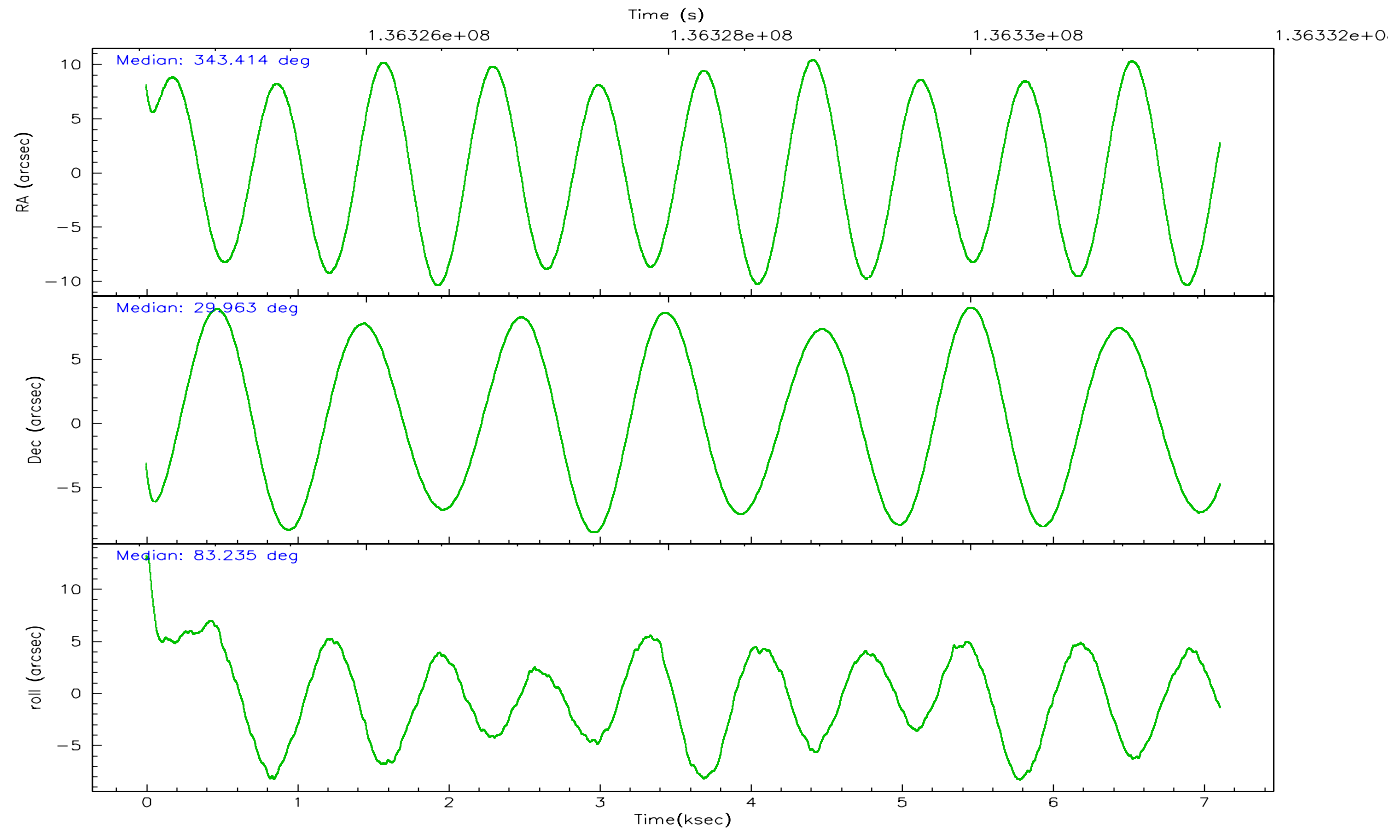
	ccd 2	ccd 3	ccd 5	ccd 6	ccd 7	ccd 8
grade 0 events	2553	2379	5810	2316	1599	4443
	5%	5%	8%	5%	2%	7%
grade 1 events	21	21	97	27	40	35
	0%	0%	0%	0%	0%	0%
grade 2 events	1201	1176	8982	1183	5754	2877
	2%	2%	12%	2%	9%	4%
grade 3 events	528	477	697	543	1282	1709
	1%	1%	0%	1%	2%	2%
grade 4 events	463	535	729	515	1161	1584
	0%	1%	1%	1%	1%	2%
grade 5 events	1689	1819	3153	1993	4120	2569
	3%	4%	4%	4%	6%	4%
grade 6 events	976	1031	16920	1119	13550	3527
	2%	2%	24%	2%	22%	5%
grade 7 events	39952	37813	33654	38606	32591	44205
	84%	83%	48%	83%	54%	72%

## 2.2 Compared Parameters

Parameter	Planned	Actual	Parameter	Planned	Actual
Instrument	ACIS	ACIS	Obspar format version number	6	6
Detector	ACIS-235678	ACIS-235678	Obspar file type	PREDICTED	ACTUAL
Grating	NONE	NONE	Obspar update status	NONE	UPDATED
Data mode	FAINT	FAINT	Number of optional ACIS chips dropped	0	0
Observation mode	POINTING	POINTING	On-chip summing requested	N	N
Pointing RA	343.426441	343.4136835829347	Subarray requested	NONE	NONE
Pointing Dec	29.937744	29.96262040963823	Alternating exposures requested	N	N
Pointing Roll	83.080891	83.24389114825884	Primary exposure time	0.000000	3.2
SIM focus pos (mm)	-0.684267	-0.6828225247311905			
SIM defocus (mm)	0	0.001444936568705701			
SIM translation stage pos (mm)	-190.132523	-190.1400660498719			
SIM translation stage offset (mm)	0	0.00754346686406393			
Observation start time	136324650.184000	136323467.93244			
Observation start date	2002-04-27T19:56:26	2002-04-27T19:37:47			
Observation end time	136331650.184000	136332202.9828			
Observation end date	2002-04-27T21:53:06	2002-04-27T22:03:22			
Read mode	TIMED	TIMED			

### 2.3 Aspect





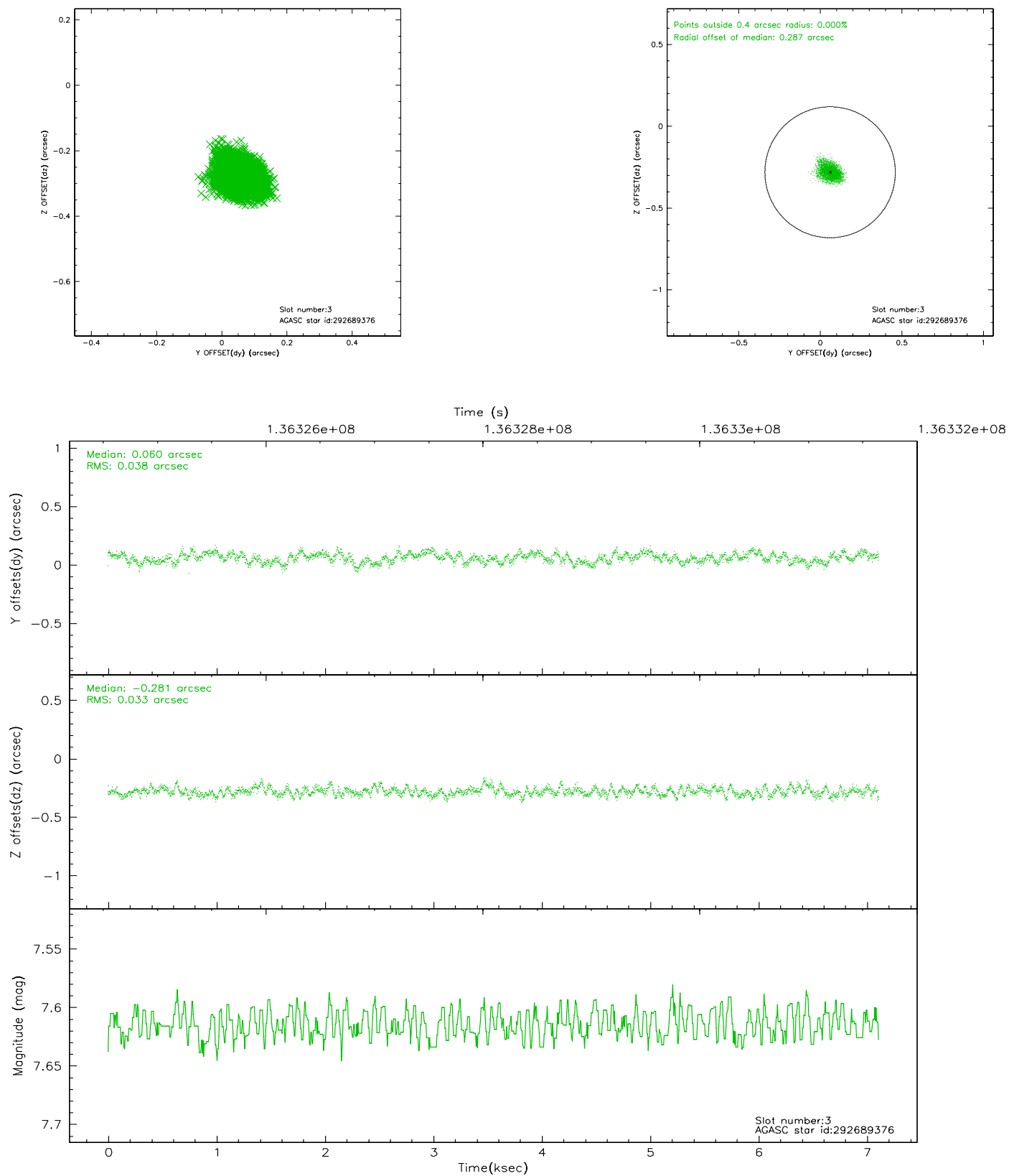
### Slot Statistics

slot	status	id	mag	n_pts	med_dy	med_dz	dr1	dr2	ra	dec	mean_y	mean_z
0	FID	ACIS-S-2	7.11	1735	0.001	0.025	0.009	0.016	0.000000	0.000000	-755.40	-1728.47
1	FID	ACIS-S-4	7.20	1735	-0.081	-0.007	0.005	0.010	0.000000	0.000000	2157.43	179.14
2	FID	ACIS-S-5	7.24	1735	0.050	-0.009	0.009	0.015	0.000000	0.000000	-1807.15	173.74
3	GUIDE	292689376	7.62	3470	0.060	-0.281	0.054	0.087	342.835363	29.799429	-712.60	1773.25
4	GUIDE	294392424	8.79	3470	-0.054	0.195	0.071	0.111	344.160387	29.990797	472.36	-2247.10
5	GUIDE	360321448	8.65	3468	-0.148	-0.072	0.062	0.099	343.410212	30.620907	2435.00	345.85
6	GUIDE	360338152	9.33	3469	-0.087	0.268	0.097	0.152	344.157154	30.014472	556.49	-2226.60
7	GUIDE	292685960	8.63	3468	0.226	-0.113	0.059	0.096	343.202769	29.440962	-1859.29	479.84

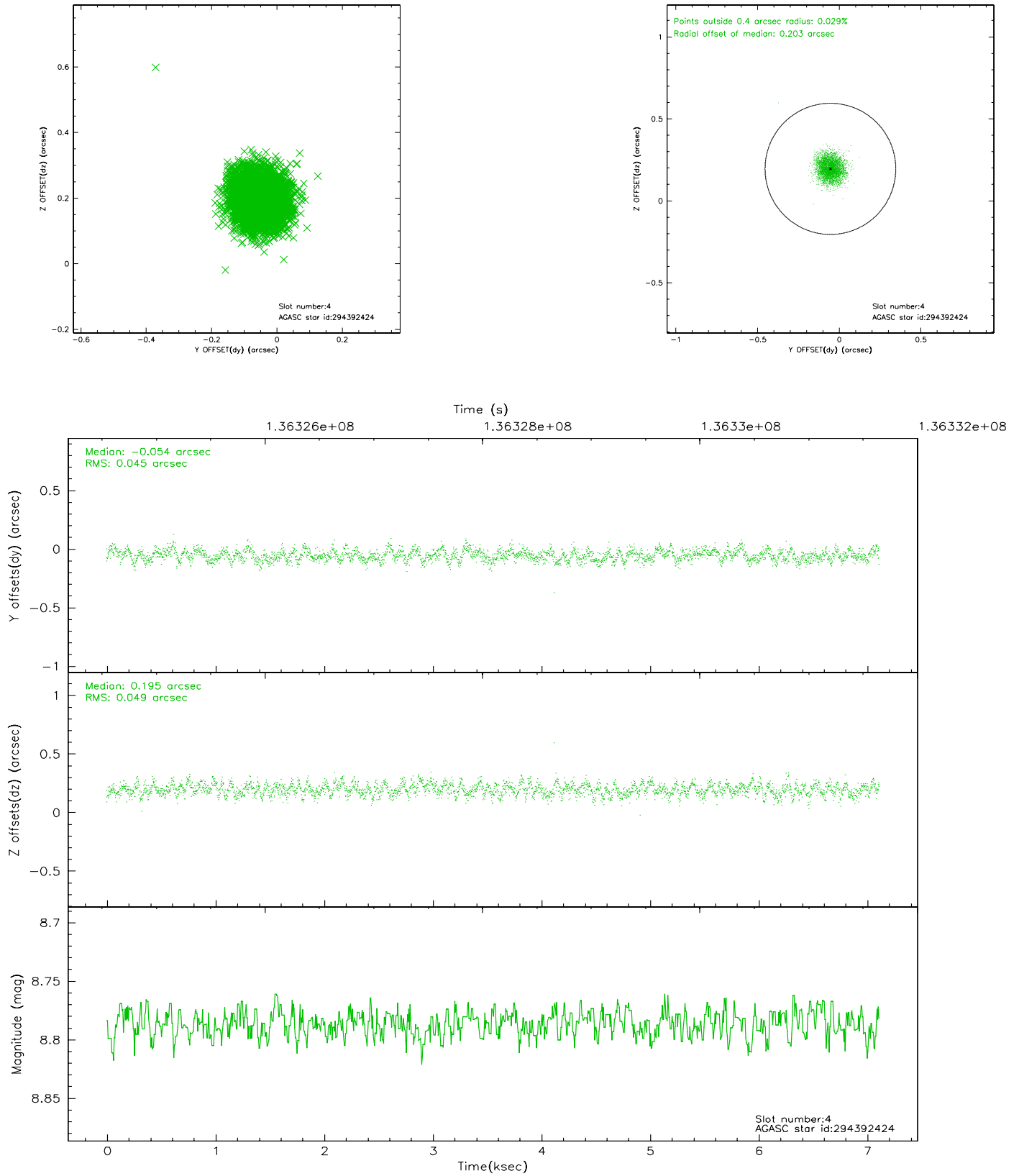


## 2.4 Star Slots

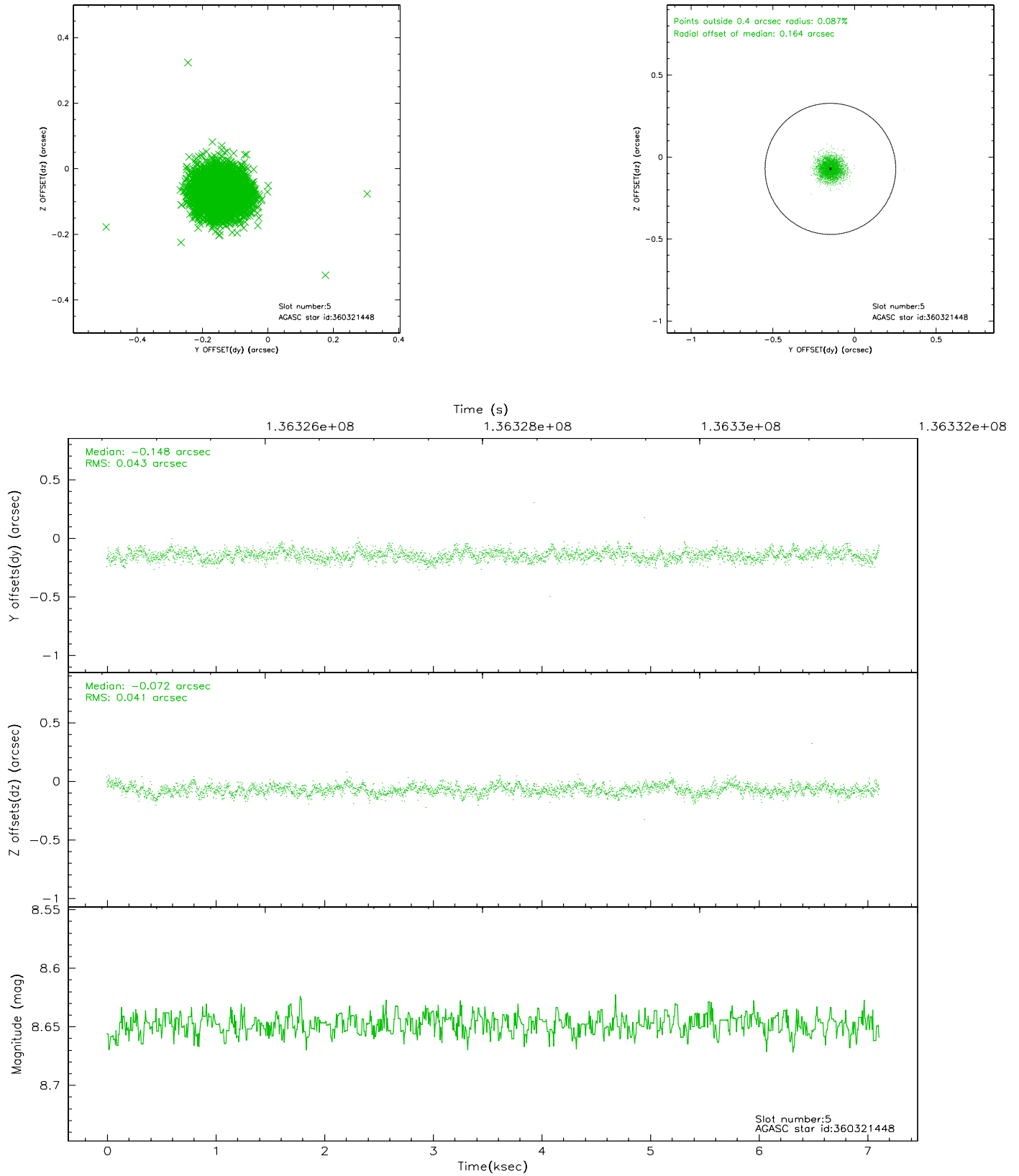
### 2.4.1 Slot 3



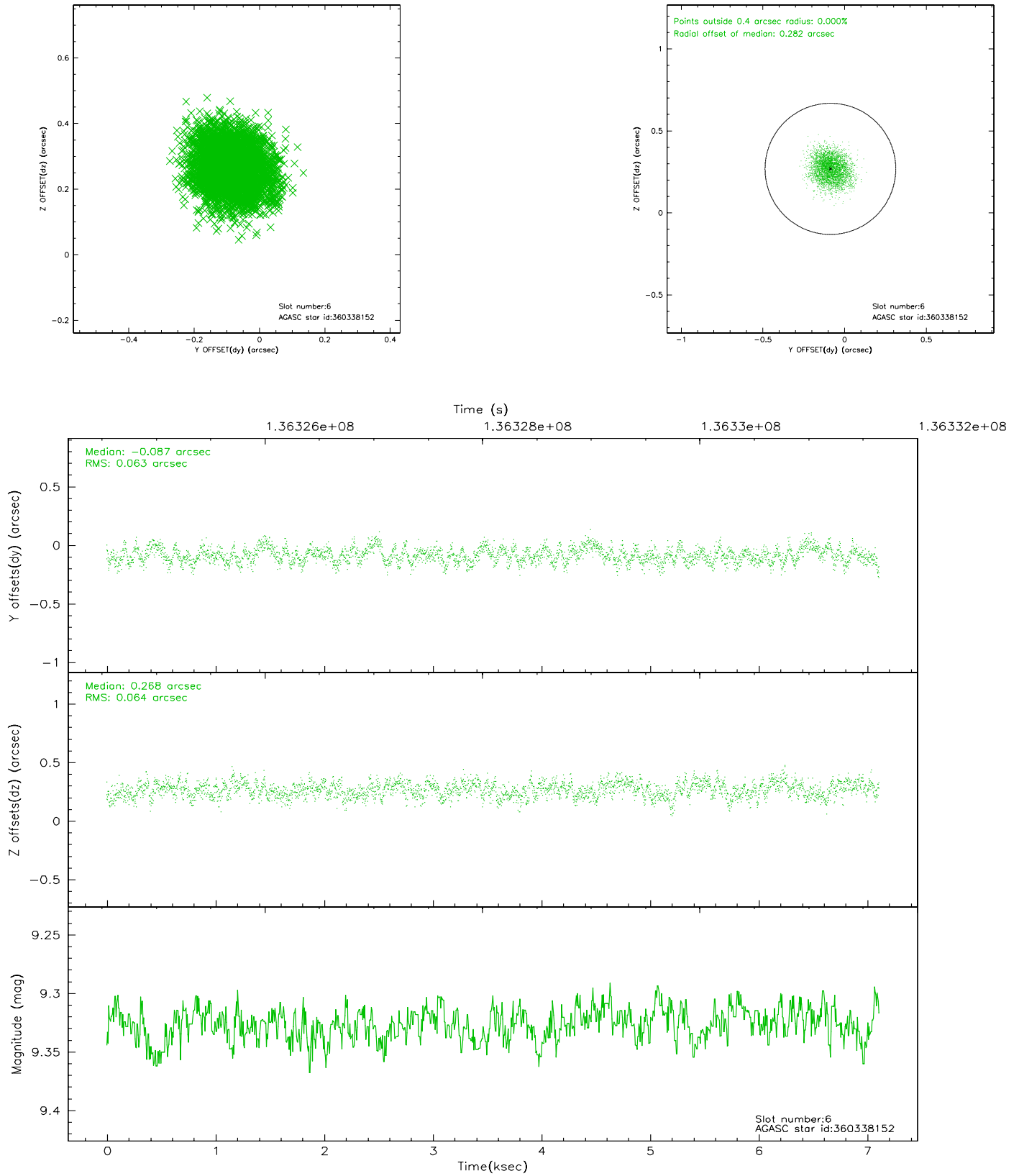
## 2.4.2 Slot 4



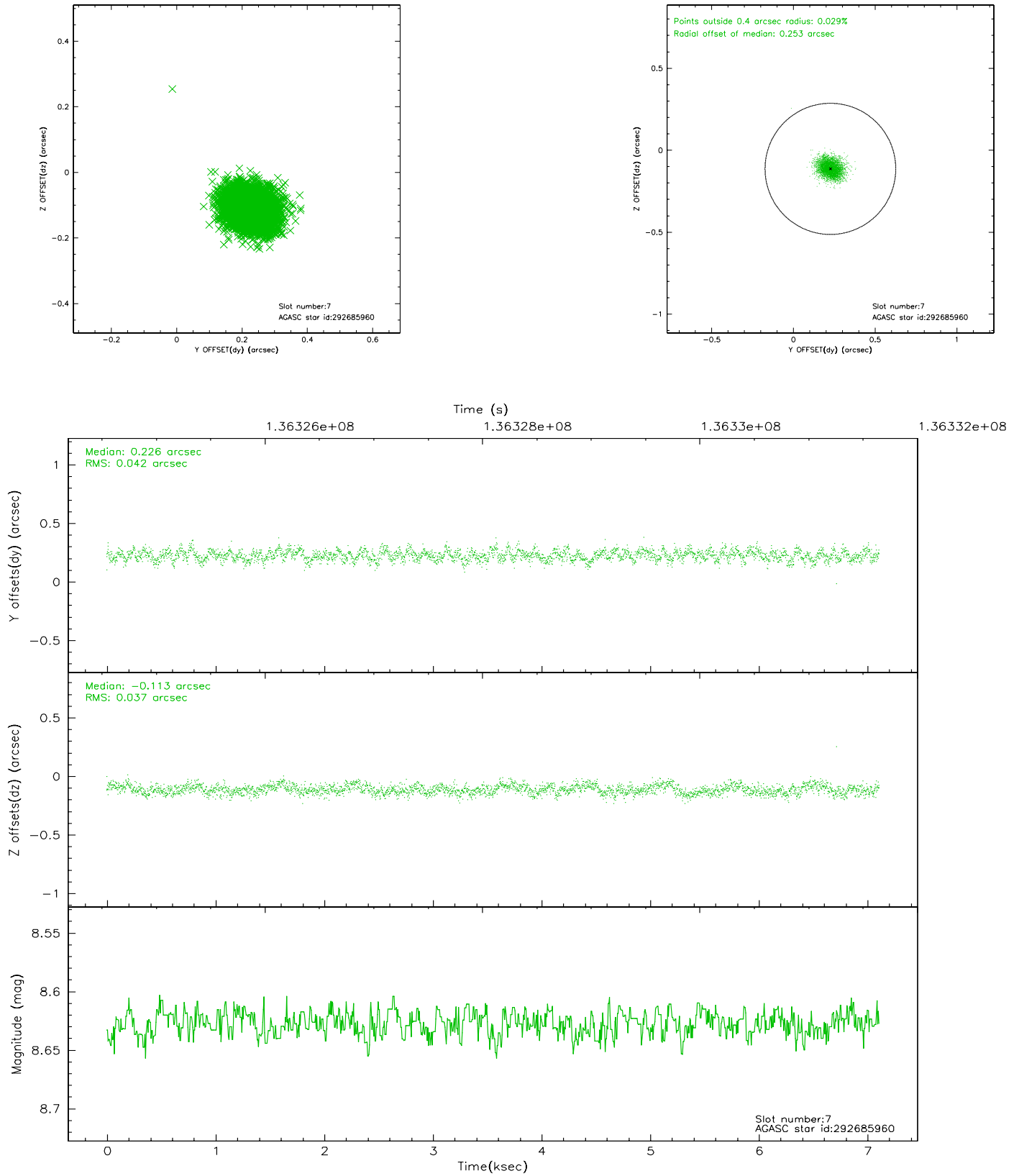
### 2.4.3 Slot 5



## 2.4.4 Slot 6

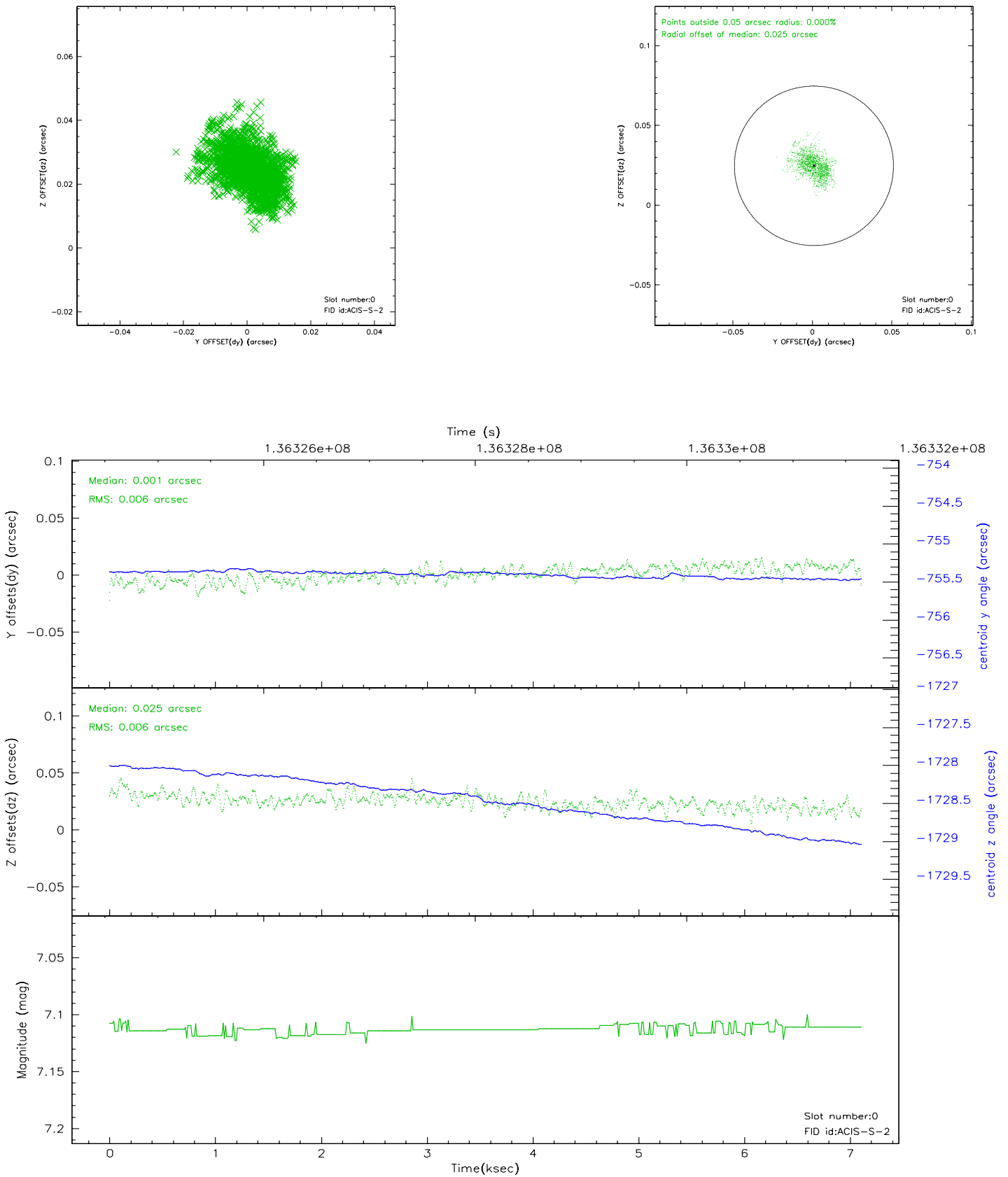


## 2.4.5 Slot 7

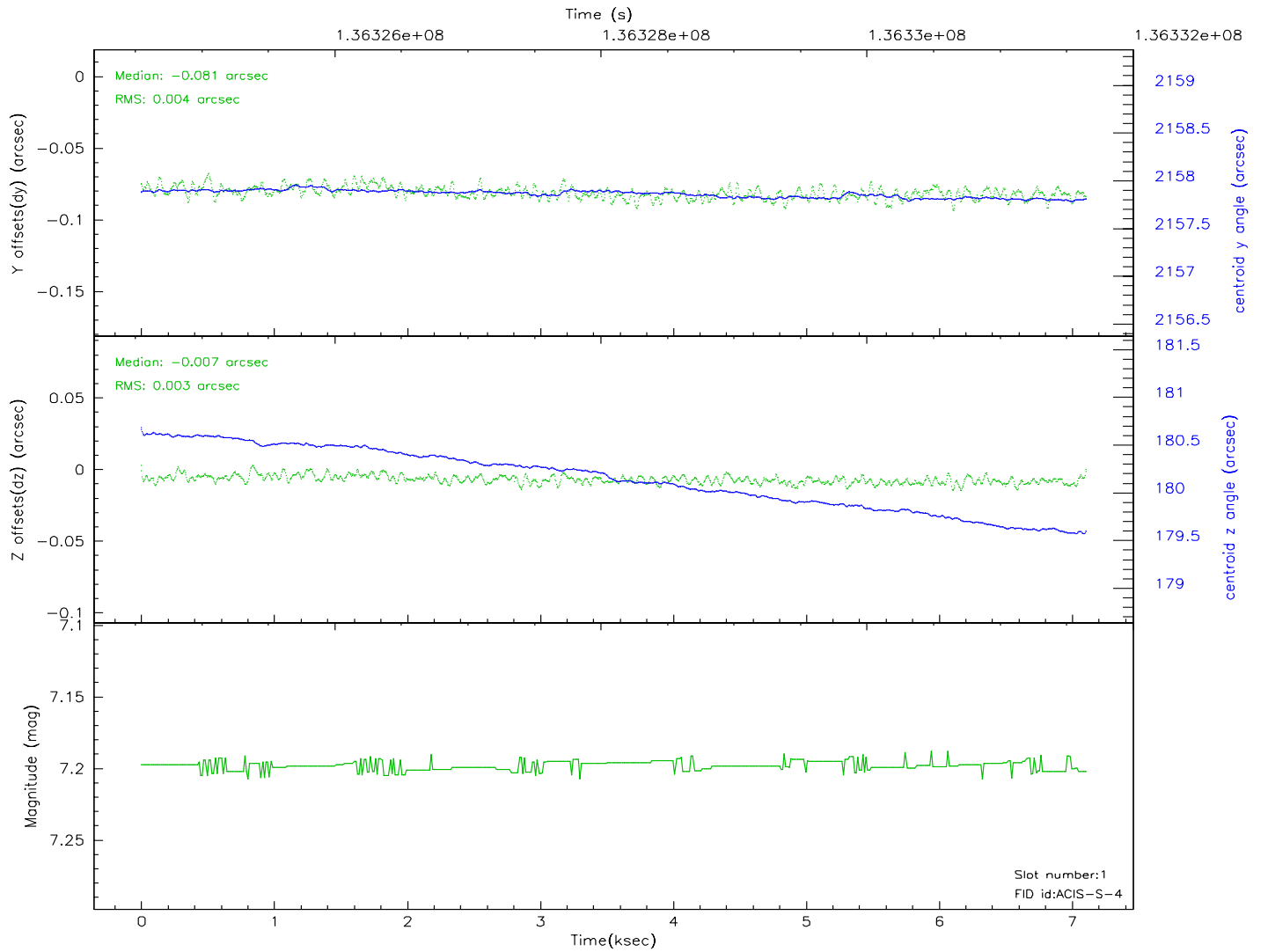
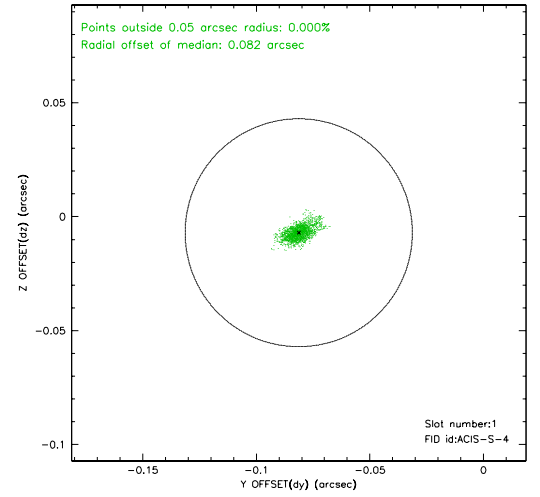
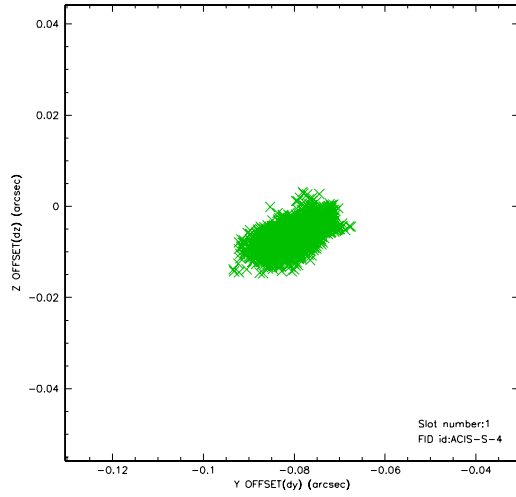


## 2.5 FID Slots

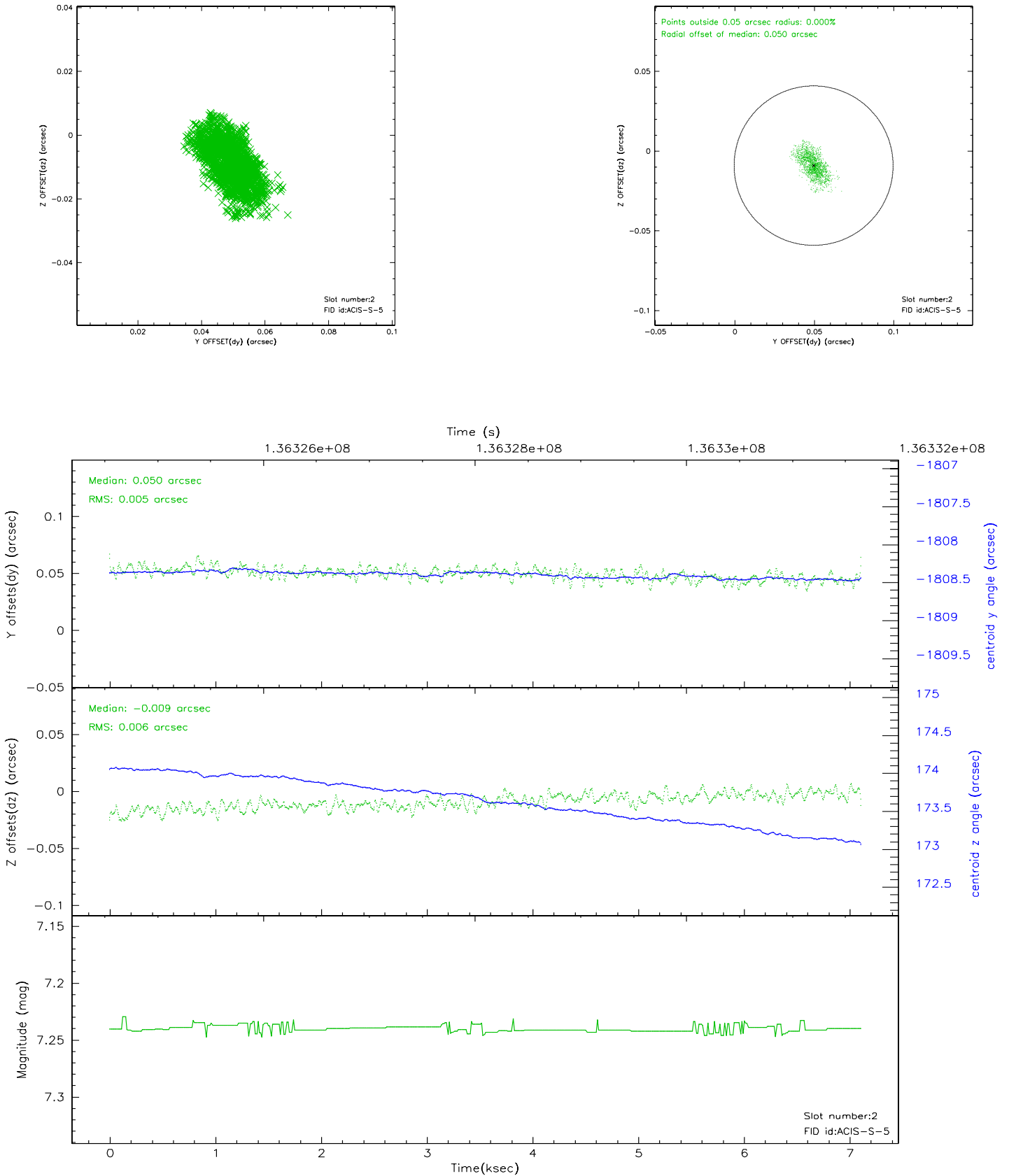
### 2.5.1 Slot 0



## 2.5.2 Slot 1

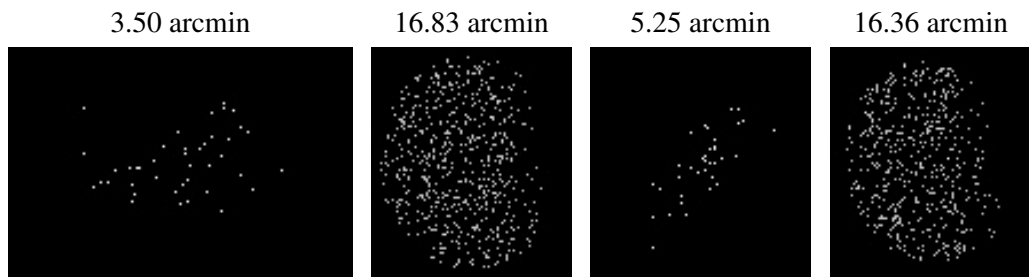


### 2.5.3 Slot 2





### 3 Point Sources



## A Summary

### A.1 Status

V&V Scientist	Beth Sundheim
V&V Date (YYYY-MM-DD)	2006.09.14
V&V Edition	1
V&V Disposition and Status	OK
V&V Charge Time	7.107

### A.2 Comments