

V&V Reference Report

L2 ASCDS Version : 7.6.8

Observation 3072 - L2 Version 001
Chandra X-Ray Center

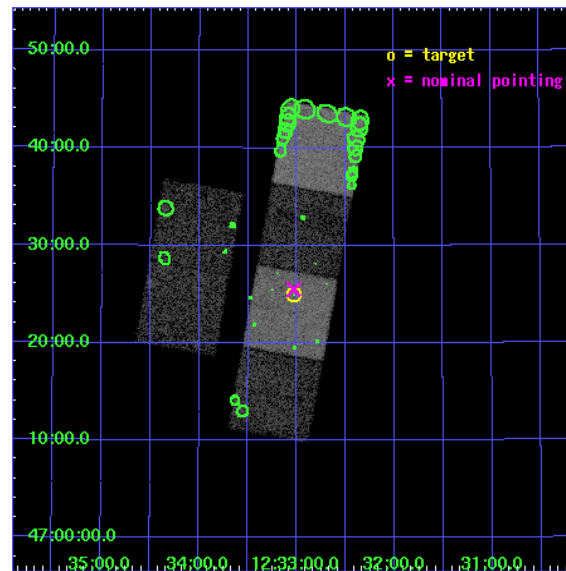
L2 Processing Date : Jul 19 2006

Contents

1	Front	2
2	OBI	3
2.1	OBI	3
2.1.1	Images	3
2.1.2	Bias	3
2.1.3	Parameters	4
2.1.4	Events	4
2.2	Compared Parameters	5
2.3	Aspect	6
2.4	Star Slots	9
2.4.1	Slot 3	9
2.4.2	Slot 4	10
2.4.3	Slot 5	11
2.4.4	Slot 6	12
2.4.5	Slot 7	13
2.5	FID Slots	14
2.5.1	Slot 0	14
2.5.2	Slot 1	15
2.5.3	Slot 2	16
3	Point Sources	17
A	Summary	18
A.1	Status	18
A.2	Comments	18

1 Front

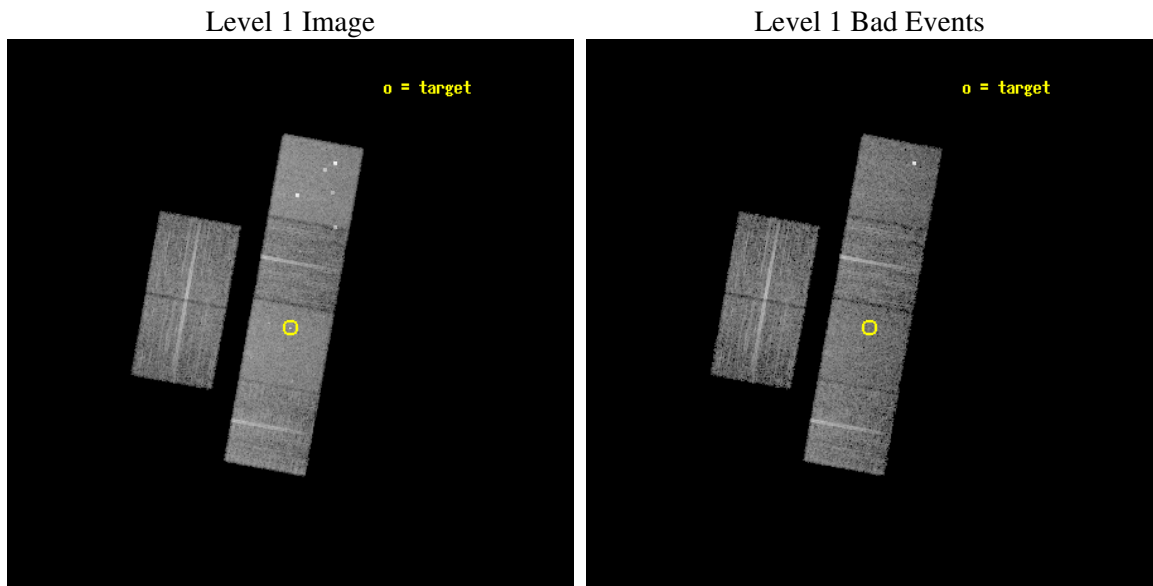
seq_num	700511
obs_id	3072
title	X-RAY WEAK BROAD-LINE QUASARS: ABSORPTION OR INTRINSIC X_RAY WEAKNESS ?
observer	Dr Guido Risaliti
object	HS 1230+4741
dtcycle	0
cycle	P
ra_targ	188.2575
dec_targ	47.415417
ra_nom	188.25738676625
dec_nom	47.425033360659
roll_nom	100.29865820874
revision	2
ontime	10051.199962556
livetime	9923.9256165245
ontime2	10051.199962556
ontime3	10051.199962556
ontime5	10051.199962556
ontime6	10051.199962556
ontime7	10051.199962556
ontime8	10051.199962556
l2events	89435



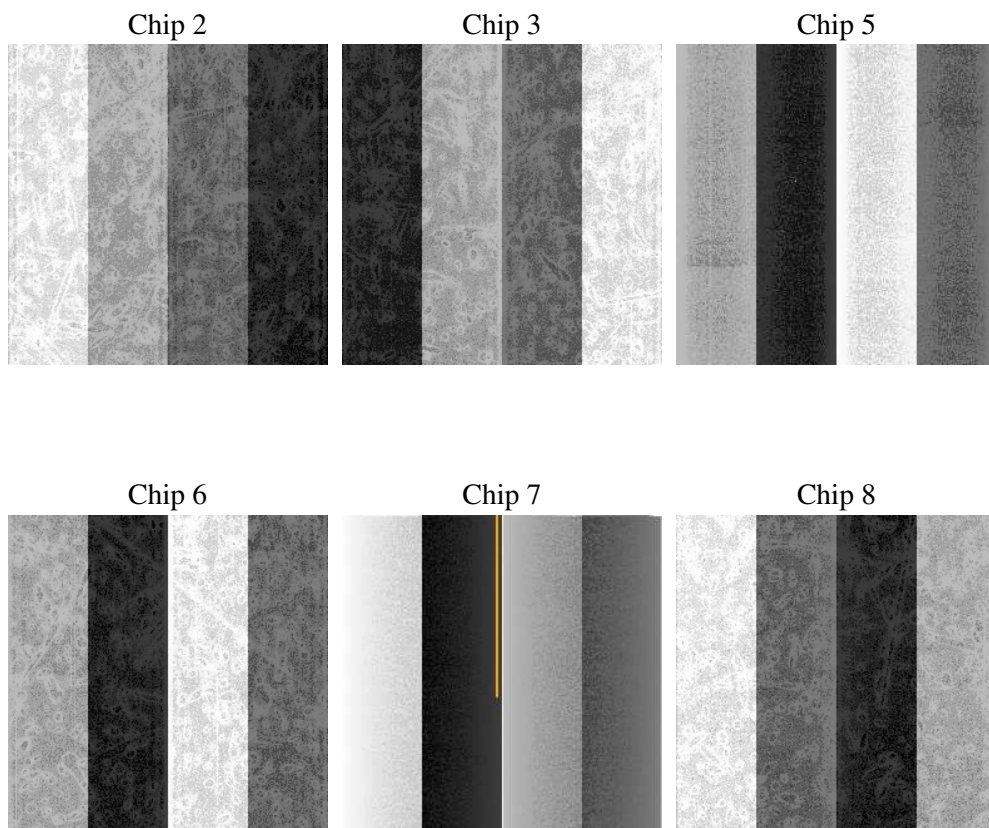
2 OBI

2.1 OBI

2.1.1 Images



2.1.2 Bias



2.1.3 Parameters

obi_num	0
ascdsver	7.6.8
caldbver	3.2.2
date	2006-07-19T13:14:56
revision	2

sched_exp_time	10000.000000
ontime	10056.829361886
ontime2	10056.829361886
ontime3	10056.829361886
ontime5	10056.829361886
ontime6	10056.829361886
ontime7	10056.829361886
ontime8	10056.829361886
l1events	417258

2.1.4 Events

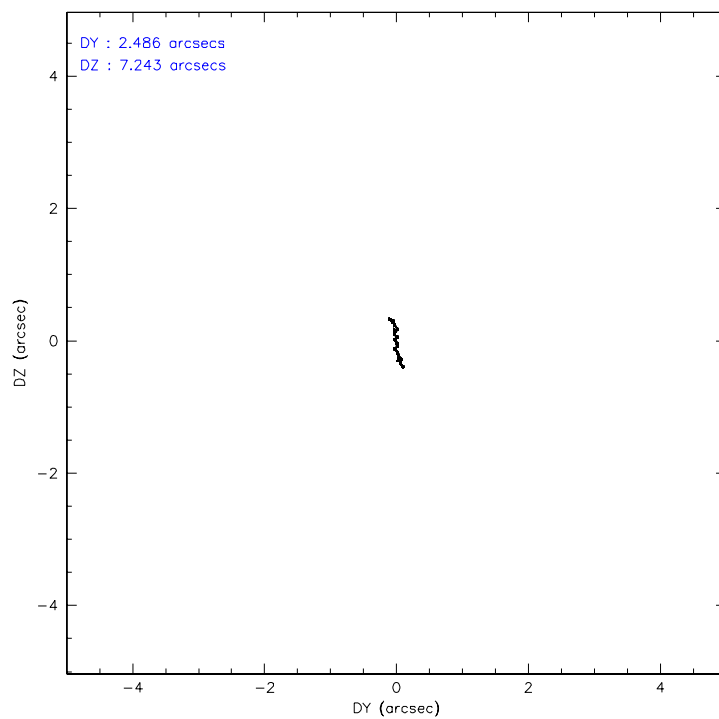
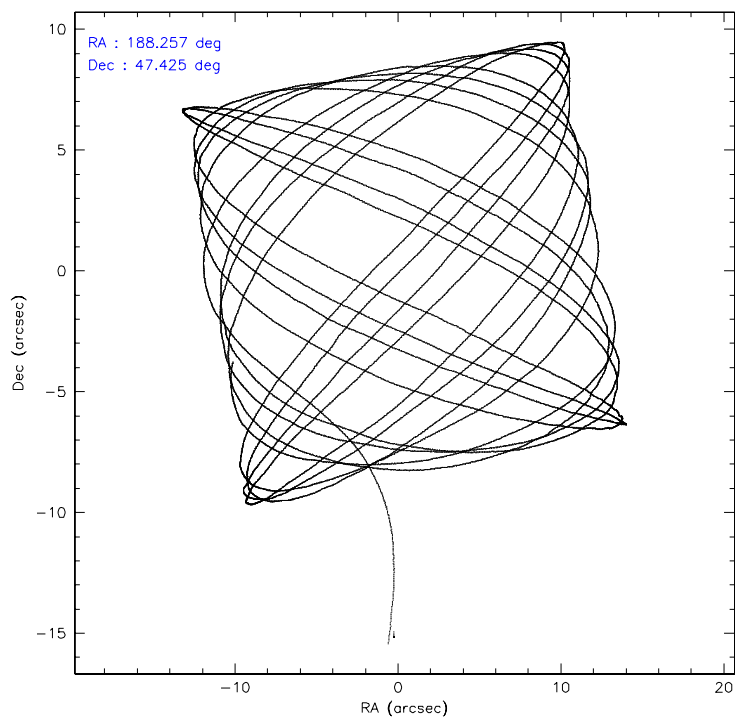
	ccd 2	ccd 3	ccd 5	ccd 6	ccd 7	ccd 8
level 1 events	60594	56122	89970	59231	79523	71818
rejected events	53536	49472	49813	52171	48704	57056
rejected %	88%	88%	55%	88%	61%	79%

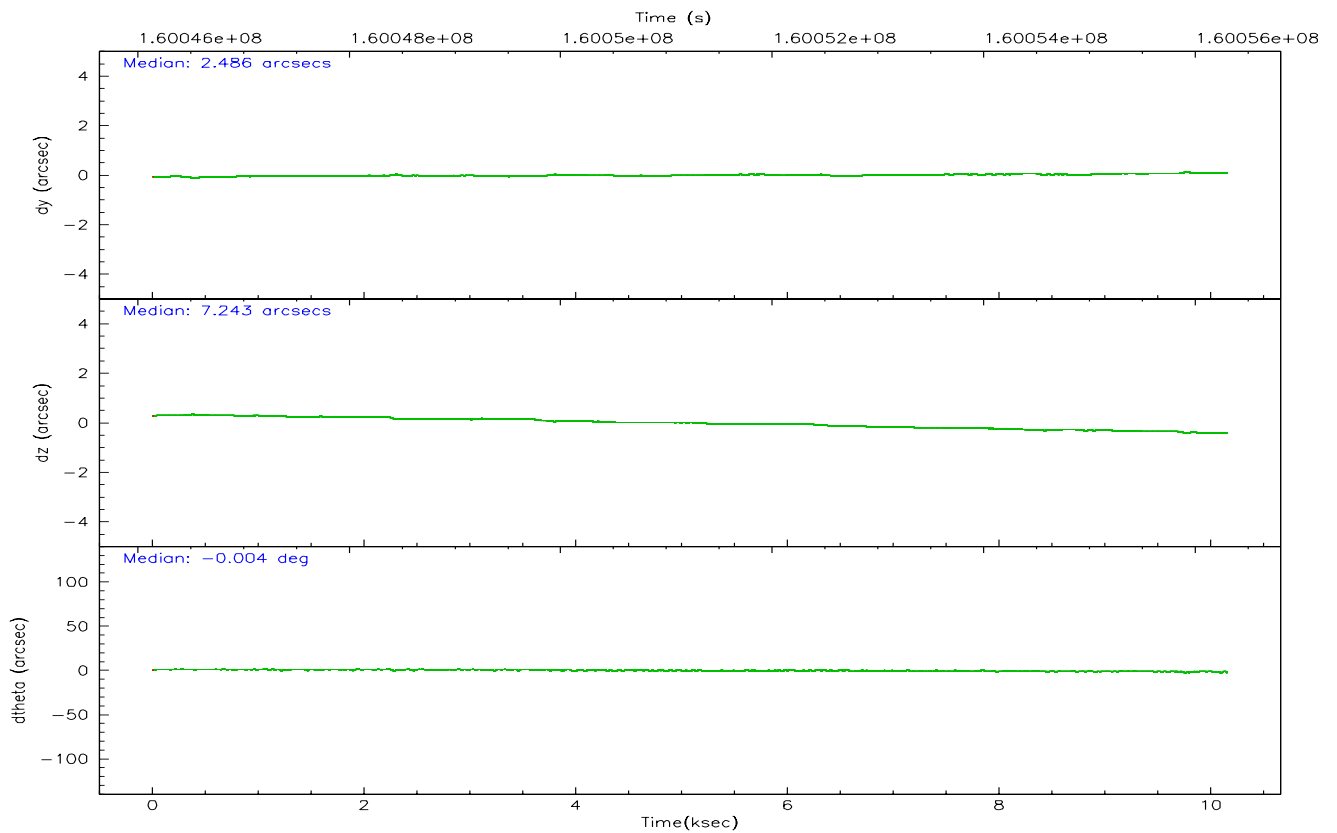
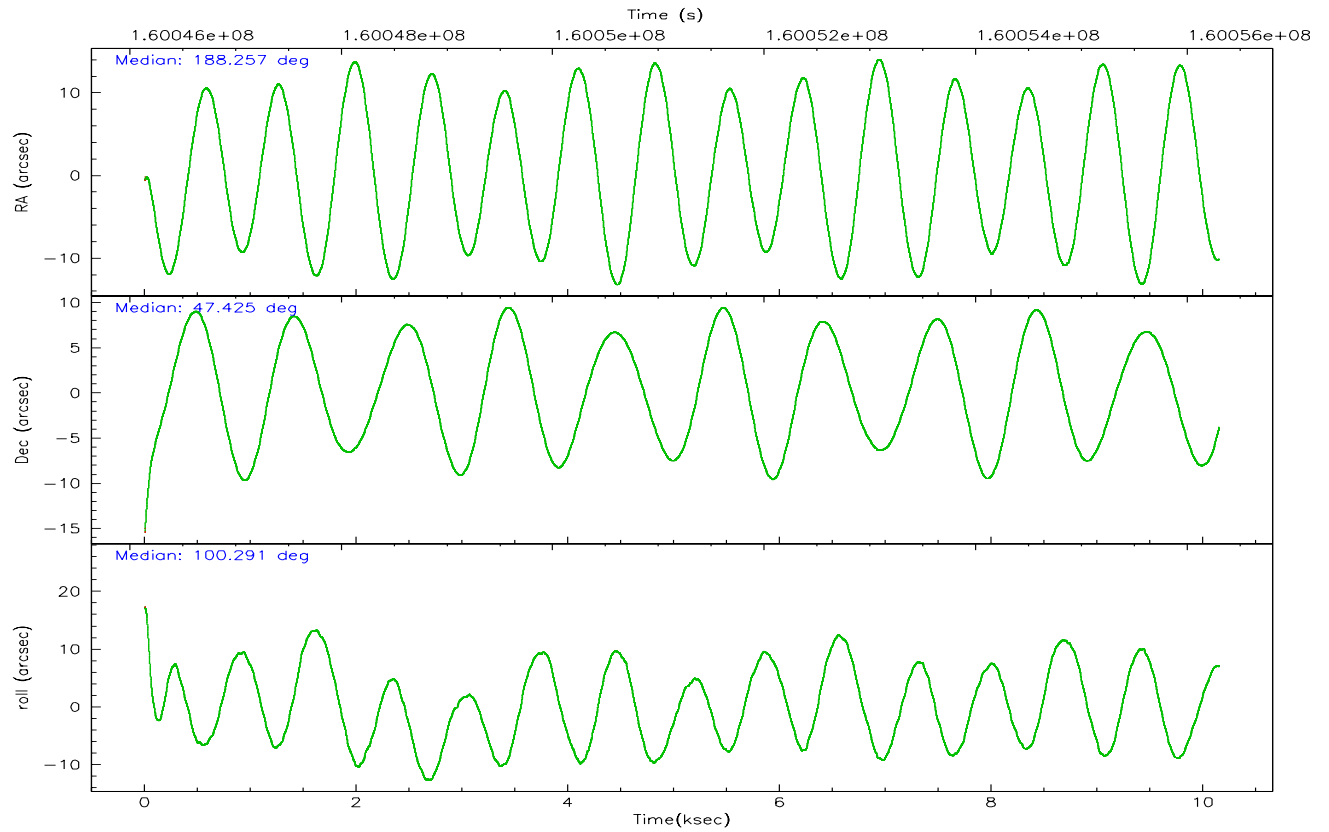
	ccd 2	ccd 3	ccd 5	ccd 6	ccd 7	ccd 8
grade 0 events	3106	2958	5525	2798	2303	4640
	5%	5%	6%	4%	2%	6%
grade 1 events	37	35	91	27	48	43
	0%	0%	0%	0%	0%	0%
grade 2 events	1456	1166	11749	1444	7618	3201
	2%	2%	13%	2%	9%	4%
grade 3 events	679	644	949	683	1669	1593
	1%	1%	1%	1%	2%	2%
grade 4 events	680	688	765	682	1520	1450
	1%	1%	0%	1%	1%	2%
grade 5 events	2302	2483	5315	2657	5116	3439
	3%	4%	5%	4%	6%	4%
grade 6 events	1138	1195	21183	1455	17717	3881
	1%	2%	23%	2%	22%	5%
grade 7 events	51196	46953	44393	49485	43532	53571
	84%	83%	49%	83%	54%	74%

2.2 Compared Parameters

Parameter	Planned	Actual	Parameter	Planned	Actual
Instrument	ACIS	ACIS	Obspar format version number	6	6
Detector	ACIS-235678	ACIS-235678	Obspar file type	PREDICTED	ACTUAL
Grating	NONE	NONE	Obspar update status	NONE	UPDATED
Data mode	FAINT	FAINT	On-chip summing requested	N	N
Observation mode	POINTING	POINTING	Subarray requested	NONE	NONE
Pointing RA	188.283887	188.257386766255	Alternating exposures requested	N	N
Pointing Dec	47.404552	47.42503336065943	Primary exposure time	0.000000	3.2
Pointing Roll	100.122486	100.2986582087382			
SIM focus pos (mm)	-0.684267	-0.6828225247311905			
SIM defocus (mm)	0	0.001444936568705701			
SIM translation stage pos (mm)	-190.132523	-190.1425803651734			
SIM translation stage offset (mm)	0	0.01005778216563158			
Observation start time	160046301.184000	160045294.01264			
Observation start date	2003-01-27T09:17:17	2003-01-27T09:01:34			
Observation end time	160056301.184000	160056755.56312			
Observation end date	2003-01-27T12:03:57	2003-01-27T12:12:35			
Read mode	TIMED	TIMED			

2.3 Aspect



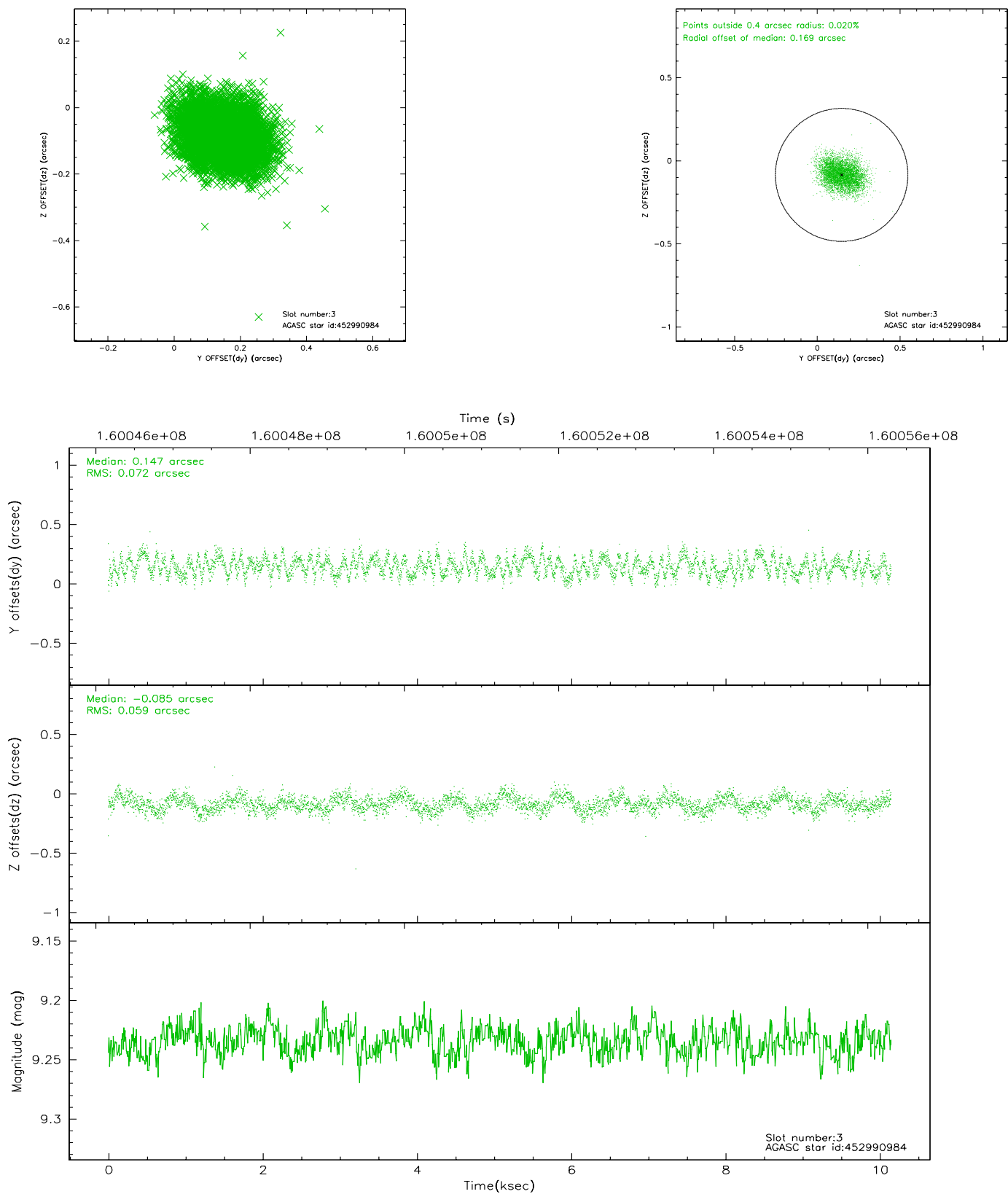


Slot Statistics

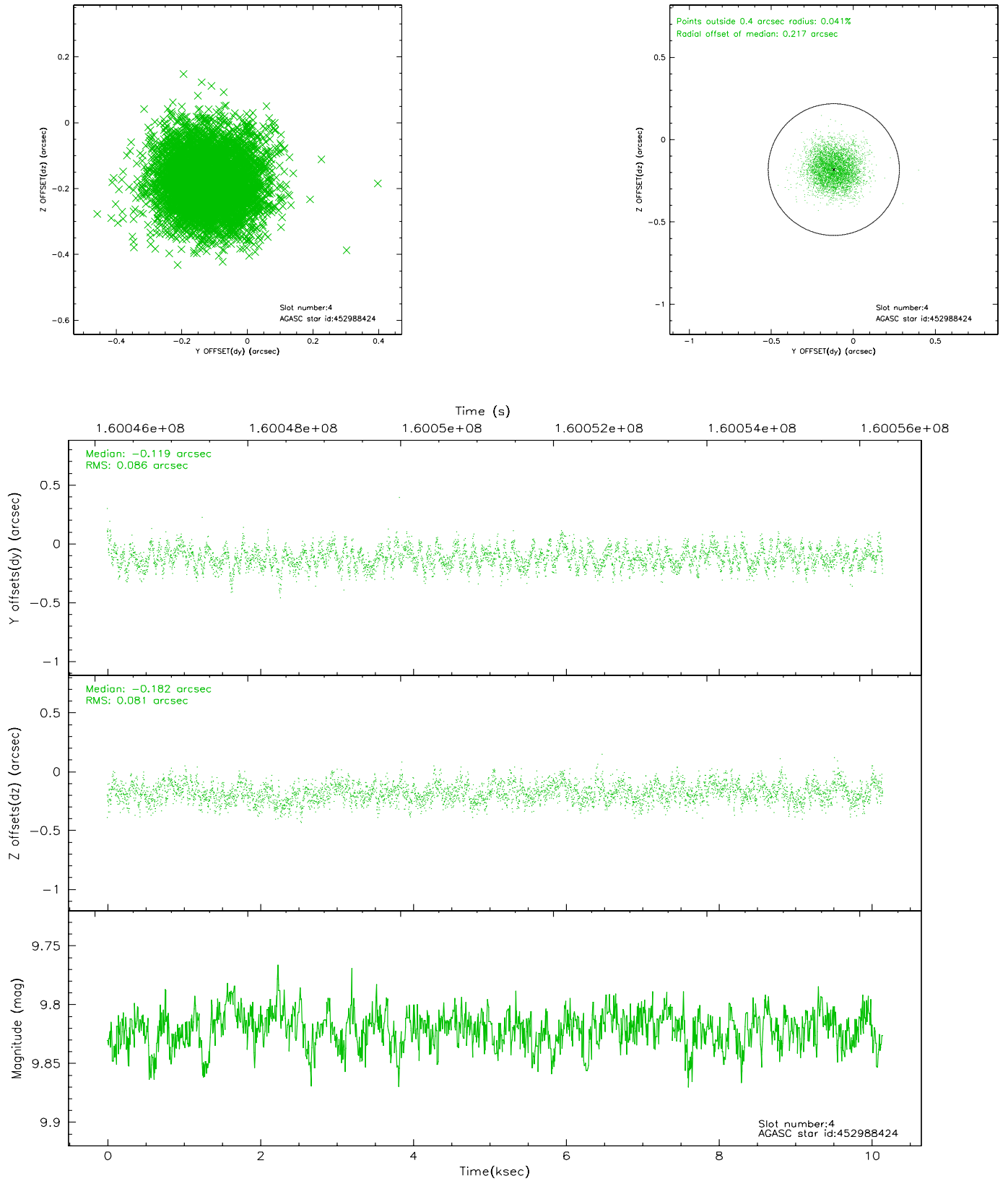
slot	status	id	mag	n_pts	med_dy	med_dz	dr1	dr2	ra	dec	mean_y	mean_z
0	FID	ACIS-S-2	7.11	2476	-0.009	0.030	0.009	0.015	0.000000	0.000000	-755.12	-1728.32
1	FID	ACIS-S-4	7.20	2476	-0.069	-0.003	0.008	0.015	0.000000	0.000000	2157.86	179.60
2	FID	ACIS-S-5	7.24	2476	0.047	-0.017	0.007	0.011	0.000000	0.000000	-1807.24	173.84
3	GUIDE	452990984	9.23	4949	0.147	-0.085	0.100	0.155	187.742810	46.960122	-1336.72	1589.07
4	GUIDE	452988424	9.82	4925	-0.119	-0.182	0.126	0.199	187.420717	47.373654	271.42	2089.42
5	GUIDE	452988904	9.51	4945	-0.200	-0.020	0.094	0.153	187.918892	48.028746	2368.63	470.62
6	GUIDE	452993568	10.06	4947	0.084	0.156	0.126	0.212	189.249394	47.034081	-1713.86	-2100.12
7	GUIDE	452991784	9.79	4951	0.084	0.131	0.104	0.167	189.261403	47.058349	-1633.21	-2143.89

2.4 Star Slots

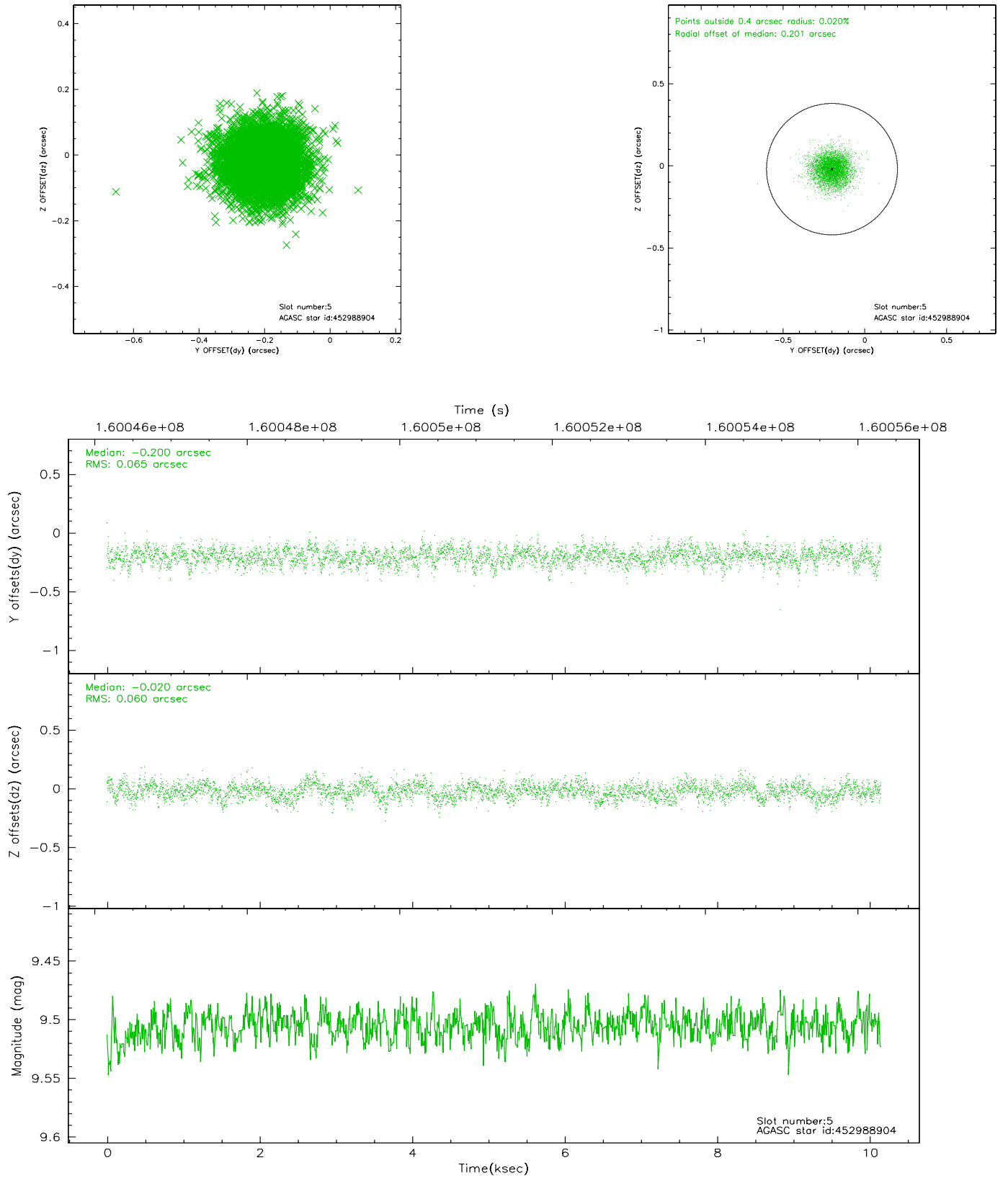
2.4.1 Slot 3



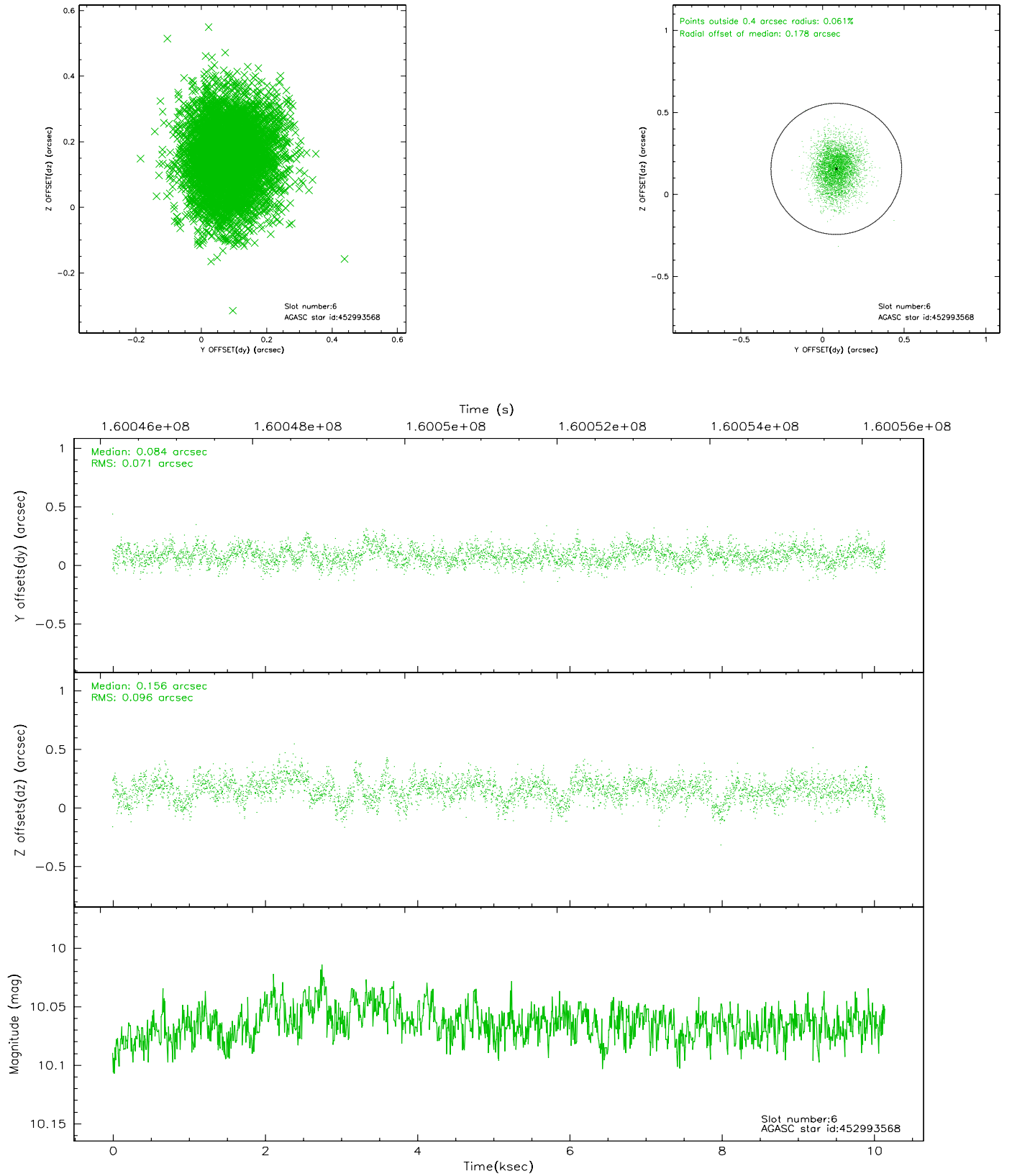
2.4.2 Slot 4



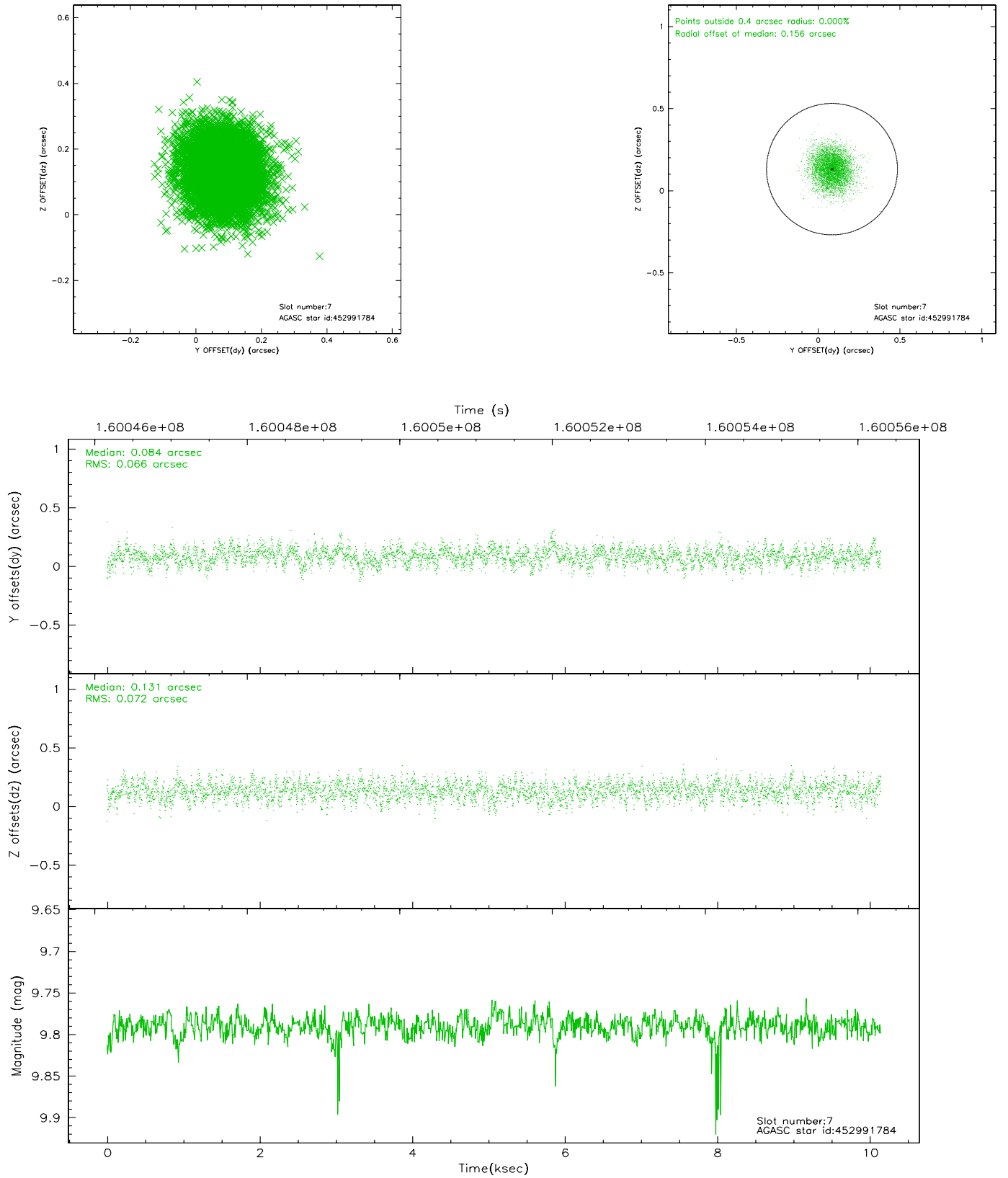
2.4.3 Slot 5



2.4.4 Slot 6

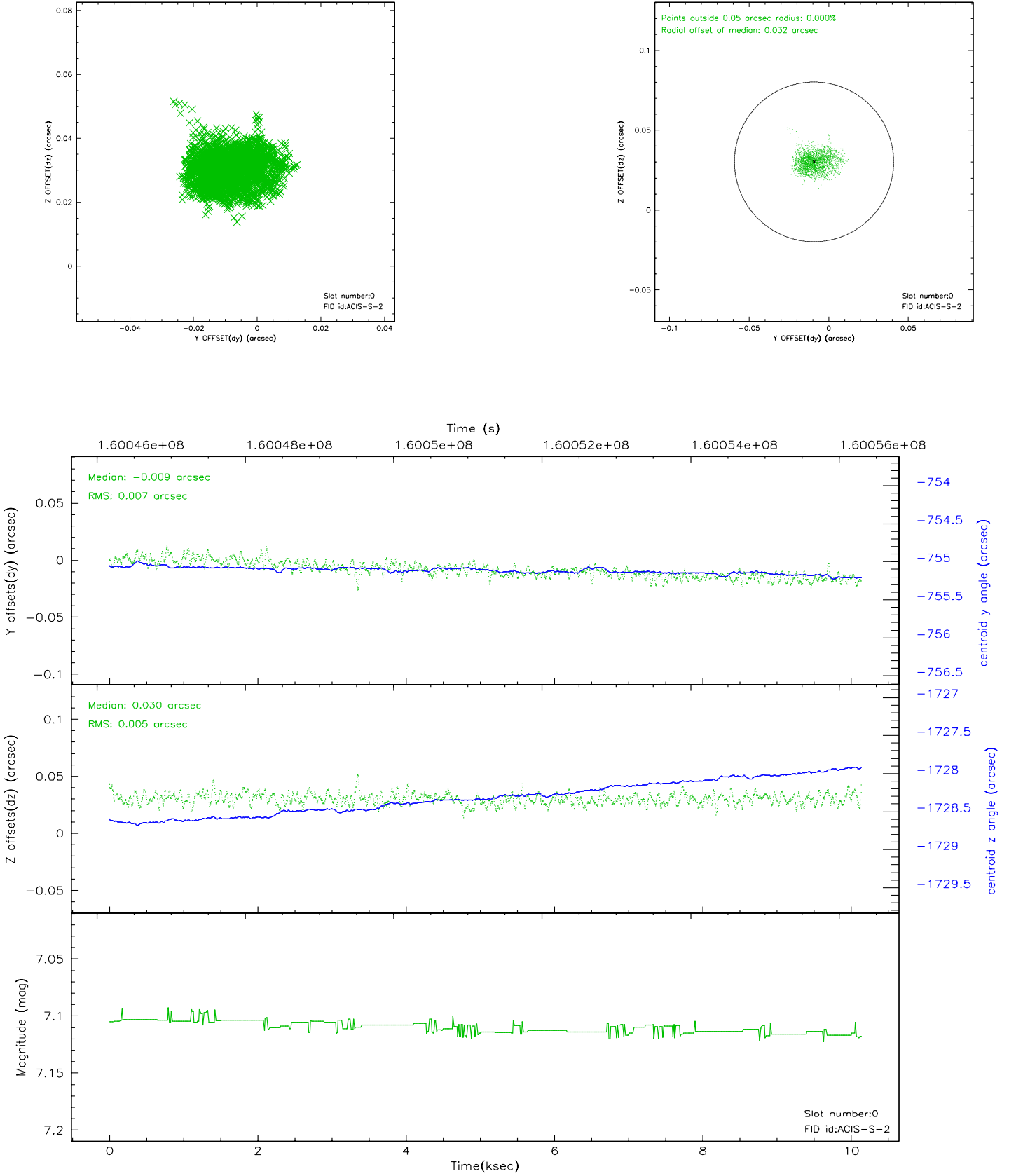


2.4.5 Slot 7

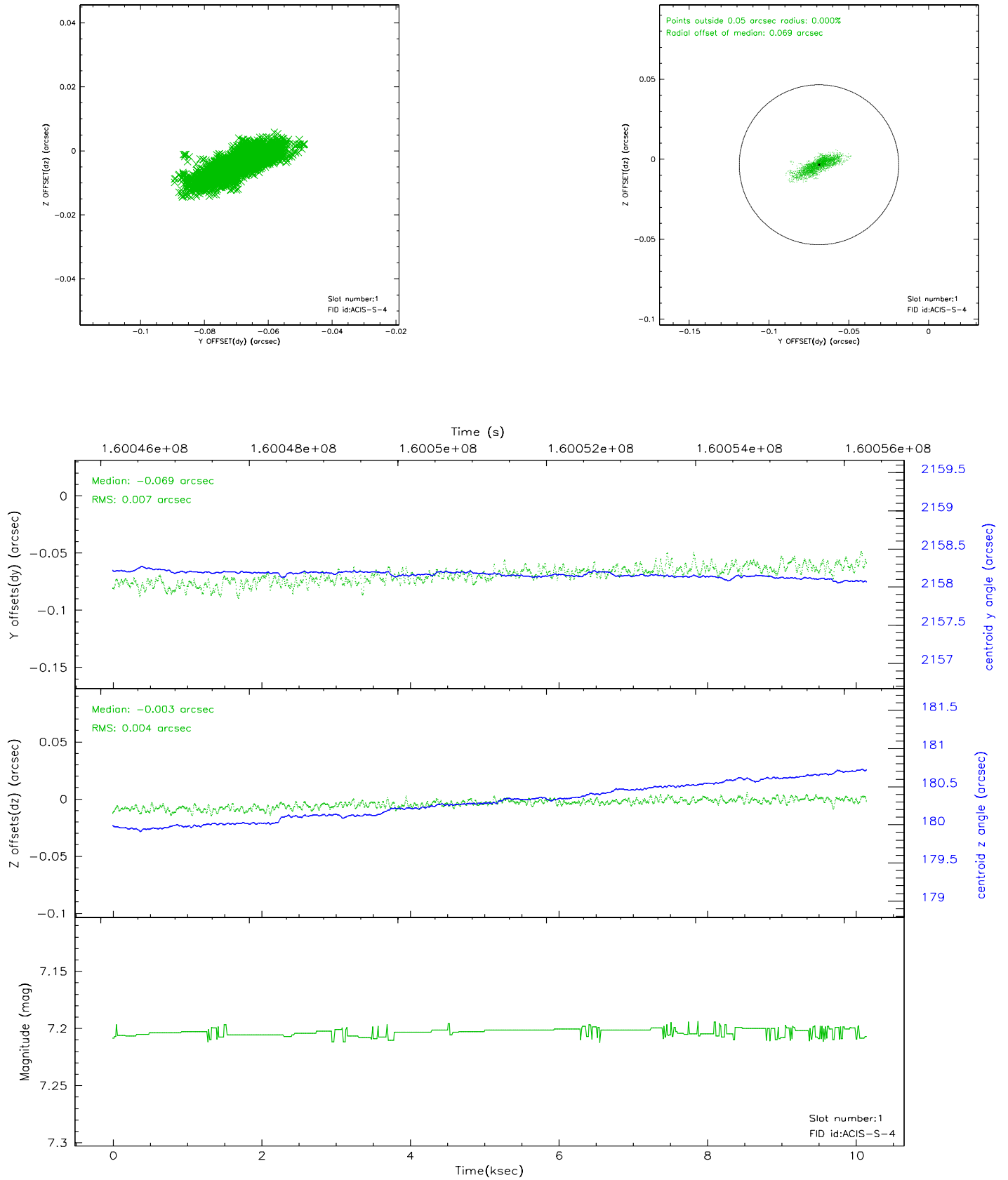


2.5 FID Slots

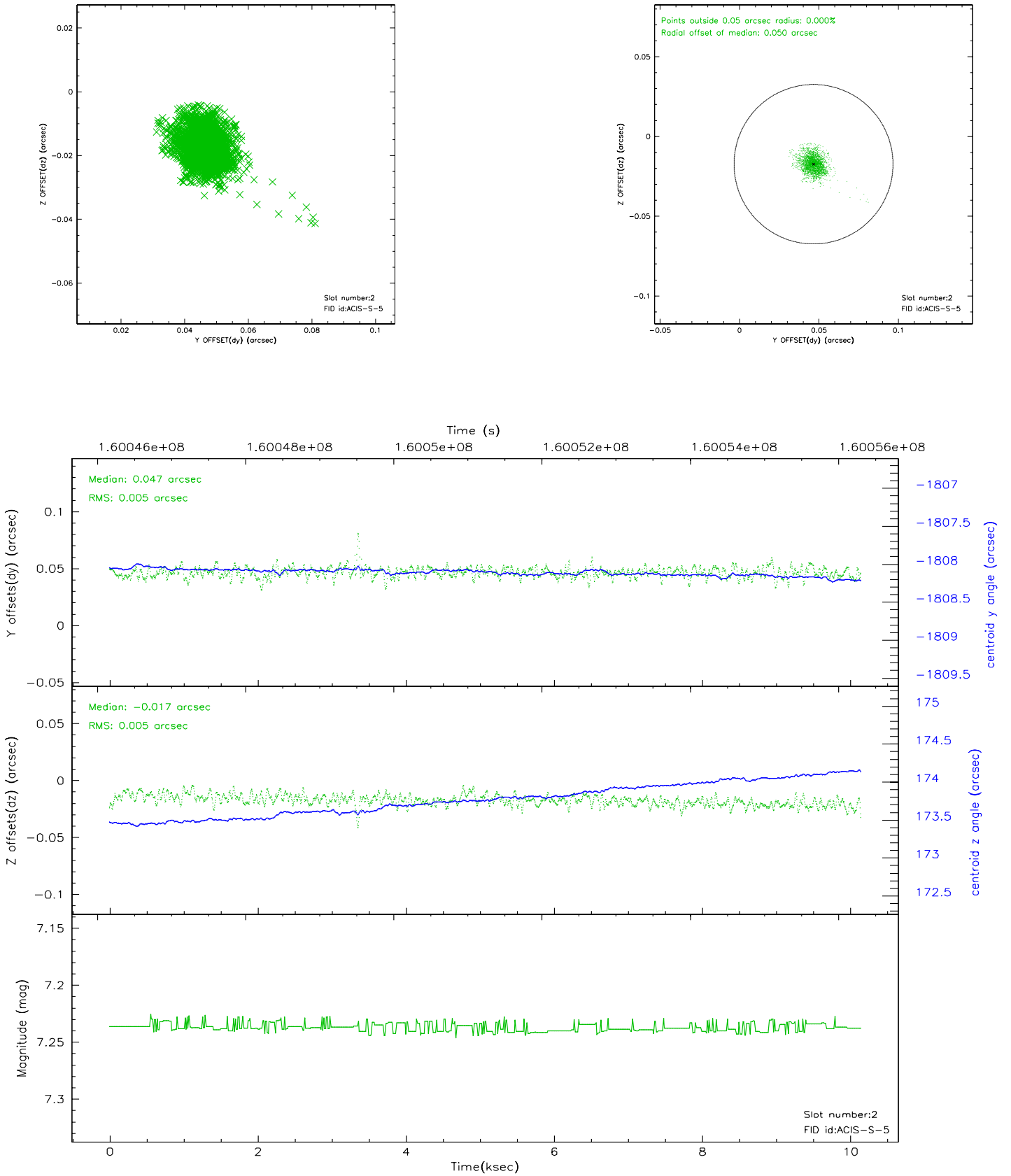
2.5.1 Slot 0



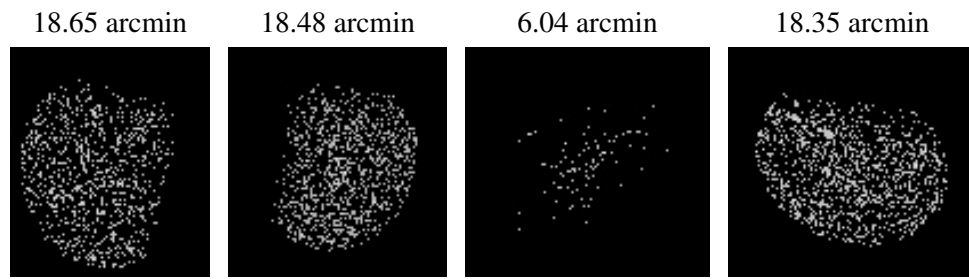
2.5.2 Slot 1



2.5.3 Slot 2



3 Point Sources



A Summary

A.1 Status

V&V Scientist	Beth Sundheim
V&V Date (YYYY-MM-DD)	2006.07.19
V&V Edition	1
V&V Disposition and Status	OK
V&V Charge Time	10.051

A.2 Comments